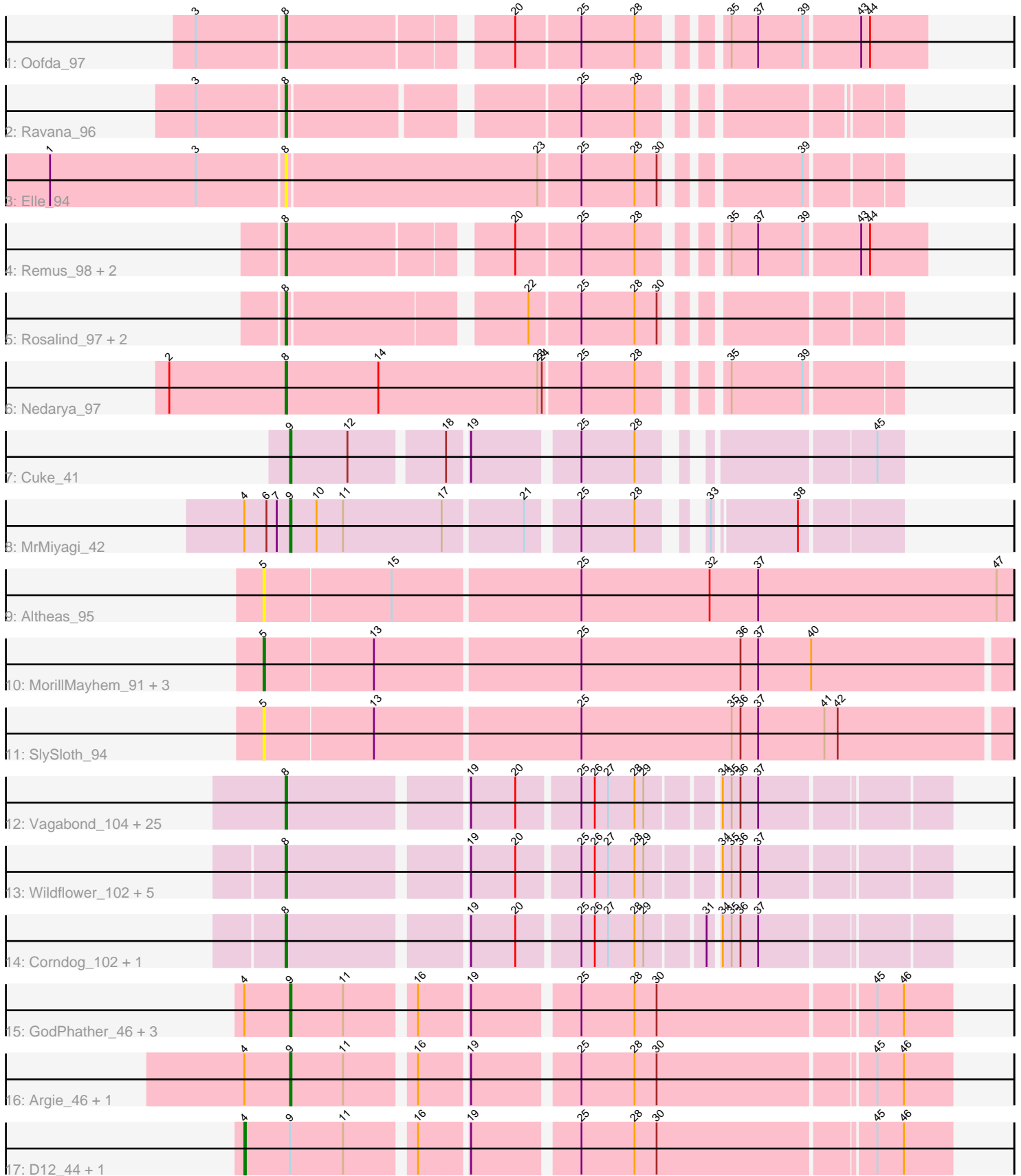


Pham 305027



Note: Tracks are now grouped by subcluster and scaled. Switching in subcluster is indicated by changes in track color. Track scale is now set by default to display the region 30 bp upstream of start 1 to 30 bp downstream of the last possible start. If this default region is judged to be packed too tightly with annotated starts, the track will be further scaled to only show that region of the ORF with annotated starts. This action will be indicated by adding "Zoomed" to the title. For starts, yellow indicates the location of called starts comprised solely of Glimmer/GeneMark auto-annotations, green indicates the location of called starts with at least 1 manual gene annotation.

Pham 305027 Report

This analysis was run 06/08/26 on database version 649.

Pham number 305027 has 60 members, 9 are drafts.

Phages represented in each track:

- Track 1 : Oofda_97
- Track 2 : Ravana_96
- Track 3 : Elle_94
- Track 4 : Remus_98, Strosahl_98, Waits_96
- Track 5 : Rosalind_97, Soups_98, KatherineG_97
- Track 6 : Nedarya_97
- Track 7 : Cuke_41
- Track 8 : MrMiyagi_42
- Track 9 : Altheas_95
- Track 10 : MorillMayhem_91, BaconCheese_95, Mila11_93, Squash_94
- Track 11 : SlySloth_94
- Track 12 : Vagabond_104, Murai_105, JangDynasty_101, KingPhillip3_103, TelAviv_102, Wogge42_102, Ryadel_109, KriLi_107, Zebo_104, Vorrps_105, Alkhayr_105, Winget_105, Schuy_105, Catdawg_106, FoulBall_104, Blessica_103, Imara_101, YoyoKar_102, SchoolBus_104, Familton_106, Shida_107, Mori_105, Idergollasper_107, NiebruSaylor_105, Bora_104, MadKillah_108
- Track 13 : Wildflower_102, YungJamal_104, Firecracker_105, Zakhe101_100, Smooch_104, Dylan_100
- Track 14 : Corndog_102, Ashwin_102
- Track 15 : GodPhather_46, Taptic_45, Jeon_45, Megabear_45
- Track 16 : Argie_46, Cepens_45
- Track 17 : D12_44, PR_45

Summary of Final Annotations (See graph section above for start numbers):

The start number called the most often in the published annotations is 8, it was called in 39 of the 51 non-draft genes in the pham.

Genes that call this "Most Annotated" start:

- Alkhayr_105, Ashwin_102, Blessica_103, Bora_104, Catdawg_106, Corndog_102, Dylan_100, Elle_94, Familton_106, Firecracker_105, FoulBall_104, Idergollasper_107, Imara_101, JangDynasty_101, KatherineG_97, KingPhillip3_103, KriLi_107, MadKillah_108, Mori_105, Murai_105, Nedarya_97, NiebruSaylor_105, Oofda_97, Ravana_96, Remus_98, Rosalind_97, Ryadel_109, SchoolBus_104,

Schuy_105, Shida_107, Smooch_104, Soups_98, Strosahl_98, TelAviv_102, Vagabond_104, Vorrps_105, Waits_96, Wildflower_102, Winget_105, Wogge42_102, YoyoKar_102, YungJamal_104, Zakhe101_100, Zebo_104,

Genes that have the "Most Annotated" start but do not call it:

-

Genes that do not have the "Most Annotated" start:

• Altheas_95, Argie_46, BaconCheese_95, Cepens_45, Cuke_41, D12_44, GodPhather_46, Jeon_45, Megabear_45, Mila11_93, MorillMayhem_91, MrMiyagi_42, PR_45, SlySloth_94, Squash_94, Taptic_45,

Summary by start number:

Start 4:

- Found in 9 of 60 (15.0%) of genes in pham
- Manual Annotations of this start: 2 of 51
- Called 22.2% of time when present
- Phage (with cluster) where this start called: D12_44 (W), PR_45 (W),

Start 5:

- Found in 6 of 60 (10.0%) of genes in pham
- Manual Annotations of this start: 2 of 51
- Called 100.0% of time when present
- Phage (with cluster) where this start called: Altheas_95 (EG), BaconCheese_95 (EG), Mila11_93 (EG), MorillMayhem_91 (EG), SlySloth_94 (EG), Squash_94 (EG),

Start 8:

- Found in 44 of 60 (73.3%) of genes in pham
- Manual Annotations of this start: 39 of 51
- Called 100.0% of time when present
- Phage (with cluster) where this start called: Alkhayr_105 (O), Ashwin_102 (O), Blessica_103 (O), Bora_104 (O), Catdawg_106 (O), Corndog_102 (O), Dylan_100 (O), Elle_94 (A15), Familton_106 (O), Firecracker_105 (O), FoulBall_104 (O), Idergollasper_107 (O), Imara_101 (O), JangDynasty_101 (O), KatherineG_97 (A15), KingPhillip3_103 (O), Krili_107 (O), MadKillah_108 (O), Mori_105 (O), Murai_105 (O), Nedarya_97 (A15), NiebruSaylor_105 (O), Oofda_97 (A15), Ravana_96 (A15), Remus_98 (A15), Rosalind_97 (A15), Ryadel_109 (O), SchoolBus_104 (O), Schuy_105 (O), Shida_107 (O), Smooch_104 (O), Soups_98 (A15), Strosahl_98 (A15), TelAviv_102 (O), Vagabond_104 (O), Vorrps_105 (O), Waits_96 (A15), Wildflower_102 (O), Winget_105 (O), Wogge42_102 (O), YoyoKar_102 (O), YungJamal_104 (O), Zakhe101_100 (O), Zebo_104 (O),

Start 9:

- Found in 10 of 60 (16.7%) of genes in pham
- Manual Annotations of this start: 8 of 51
- Called 80.0% of time when present
- Phage (with cluster) where this start called: Argie_46 (W), Cepens_45 (W), Cuke_41 (AC), GodPhather_46 (W), Jeon_45 (W), Megabear_45 (W), MrMiyagi_42 (AC), Taptic_45 (W),

Summary by clusters:

There are 5 clusters represented in this pham: A15, EG, AC, W, O,

Info for manual annotations of cluster A15:

- Start number 8 was manually annotated 9 times for cluster A15.

Info for manual annotations of cluster AC:

- Start number 9 was manually annotated 2 times for cluster AC.

Info for manual annotations of cluster EG:

- Start number 5 was manually annotated 2 times for cluster EG.

Info for manual annotations of cluster O:

- Start number 8 was manually annotated 30 times for cluster O.

Info for manual annotations of cluster W:

- Start number 4 was manually annotated 2 times for cluster W.

- Start number 9 was manually annotated 6 times for cluster W.

Gene Information:

Gene: Alkhayr_105 Start: 63347, Stop: 62940, Start Num: 8

Candidate Starts for Alkhayr_105:

(Start: 8 @63347 has 39 MA's), (19, 63236), (20, 63206), (25, 63167), (26, 63158), (27, 63149), (28, 63131), (29, 63125), (34, 63083), (35, 63077), (36, 63071), (37, 63059),

Gene: Altheas_95 Start: 58059, Stop: 57559, Start Num: 5

Candidate Starts for Altheas_95:

(Start: 5 @58059 has 2 MA's), (15, 57975), (25, 57852), (32, 57765), (37, 57732), (47, 57570),

Gene: Argie_46 Start: 40890, Stop: 41306, Start Num: 9

Candidate Starts for Argie_46:

(Start: 4 @40860 has 2 MA's), (Start: 9 @40890 has 8 MA's), (11, 40926), (16, 40968), (19, 40998), (25, 41064), (28, 41100), (30, 41115), (45, 41256), (46, 41274),

Gene: Ashwin_102 Start: 62583, Stop: 62176, Start Num: 8

Candidate Starts for Ashwin_102:

(Start: 8 @62583 has 39 MA's), (19, 62472), (20, 62442), (25, 62403), (26, 62394), (27, 62385), (28, 62367), (29, 62361), (31, 62325), (34, 62319), (35, 62313), (36, 62307), (37, 62295),

Gene: BaconCheese_95 Start: 58459, Stop: 57965, Start Num: 5

Candidate Starts for BaconCheese_95:

(Start: 5 @58459 has 2 MA's), (13, 58387), (25, 58252), (36, 58144), (37, 58132), (40, 58096),

Gene: Blessica_103 Start: 63555, Stop: 63148, Start Num: 8

Candidate Starts for Blessica_103:

(Start: 8 @63555 has 39 MA's), (19, 63444), (20, 63414), (25, 63375), (26, 63366), (27, 63357), (28, 63339), (29, 63333), (34, 63291), (35, 63285), (36, 63279), (37, 63267),

Gene: Bora_104 Start: 64397, Stop: 63990, Start Num: 8

Candidate Starts for Bora_104:

(Start: 8 @64397 has 39 MA's), (19, 64286), (20, 64256), (25, 64217), (26, 64208), (27, 64199), (28, 64181), (29, 64175), (34, 64133), (35, 64127), (36, 64121), (37, 64109),

Gene: Catdawg_106 Start: 64667, Stop: 64260, Start Num: 8

Candidate Starts for Catdawg_106:

(Start: 8 @64667 has 39 MA's), (19, 64556), (20, 64526), (25, 64487), (26, 64478), (27, 64469), (28, 64451), (29, 64445), (34, 64403), (35, 64397), (36, 64391), (37, 64379),

Gene: Cepens_45 Start: 40605, Stop: 41021, Start Num: 9

Candidate Starts for Cepens_45:

(Start: 4 @40575 has 2 MA's), (Start: 9 @40605 has 8 MA's), (11, 40641), (16, 40683), (19, 40713), (25, 40779), (28, 40815), (30, 40830), (45, 40971), (46, 40989),

Gene: Corndog_102 Start: 62493, Stop: 62086, Start Num: 8

Candidate Starts for Corndog_102:

(Start: 8 @62493 has 39 MA's), (19, 62382), (20, 62352), (25, 62313), (26, 62304), (27, 62295), (28, 62277), (29, 62271), (31, 62235), (34, 62229), (35, 62223), (36, 62217), (37, 62205),

Gene: Cuke_41 Start: 31681, Stop: 32037, Start Num: 9

Candidate Starts for Cuke_41:

(Start: 9 @31681 has 8 MA's), (12, 31720), (18, 31777), (19, 31789), (25, 31855), (28, 31891), (45, 32020),

Gene: D12_44 Start: 41123, Stop: 41569, Start Num: 4

Candidate Starts for D12_44:

(Start: 4 @41123 has 2 MA's), (Start: 9 @41153 has 8 MA's), (11, 41189), (16, 41231), (19, 41261), (25, 41327), (28, 41363), (30, 41378), (45, 41519), (46, 41537),

Gene: Dylan_100 Start: 62316, Stop: 61909, Start Num: 8

Candidate Starts for Dylan_100:

(Start: 8 @62316 has 39 MA's), (19, 62205), (20, 62175), (25, 62136), (26, 62127), (27, 62118), (28, 62100), (29, 62094), (34, 62052), (35, 62046), (36, 62040), (37, 62028),

Gene: Elle_94 Start: 49770, Stop: 49390, Start Num: 8

Candidate Starts for Elle_94:

(1, 49926), (3, 49827), (Start: 8 @49770 has 39 MA's), (23, 49602), (25, 49575), (28, 49539), (30, 49524), (39, 49449),

Gene: Familton_106 Start: 64079, Stop: 63672, Start Num: 8

Candidate Starts for Familton_106:

(Start: 8 @64079 has 39 MA's), (19, 63968), (20, 63938), (25, 63899), (26, 63890), (27, 63881), (28, 63863), (29, 63857), (34, 63815), (35, 63809), (36, 63803), (37, 63791),

Gene: Firecracker_105 Start: 63952, Stop: 63545, Start Num: 8

Candidate Starts for Firecracker_105:

(Start: 8 @63952 has 39 MA's), (19, 63841), (20, 63811), (25, 63772), (26, 63763), (27, 63754), (28, 63736), (29, 63730), (34, 63688), (35, 63682), (36, 63676), (37, 63664),

Gene: FoulBall_104 Start: 63630, Stop: 63223, Start Num: 8

Candidate Starts for FoulBall_104:

(Start: 8 @63630 has 39 MA's), (19, 63519), (20, 63489), (25, 63450), (26, 63441), (27, 63432), (28, 63414), (29, 63408), (34, 63366), (35, 63360), (36, 63354), (37, 63342),

Gene: GodPhather_46 Start: 41369, Stop: 41785, Start Num: 9

Candidate Starts for GodPhather_46:

(Start: 4 @41339 has 2 MA's), (Start: 9 @41369 has 8 MA's), (11, 41405), (16, 41447), (19, 41477), (25, 41543), (28, 41579), (30, 41594), (45, 41735), (46, 41753),

Gene: Idergollasper_107 Start: 64630, Stop: 64223, Start Num: 8

Candidate Starts for Idergollasper_107:

(Start: 8 @64630 has 39 MA's), (19, 64519), (20, 64489), (25, 64450), (26, 64441), (27, 64432), (28, 64414), (29, 64408), (34, 64366), (35, 64360), (36, 64354), (37, 64342),

Gene: Imara_101 Start: 63433, Stop: 63026, Start Num: 8

Candidate Starts for Imara_101:

(Start: 8 @63433 has 39 MA's), (19, 63322), (20, 63292), (25, 63253), (26, 63244), (27, 63235), (28, 63217), (29, 63211), (34, 63169), (35, 63163), (36, 63157), (37, 63145),

Gene: JangDynasty_101 Start: 62980, Stop: 62573, Start Num: 8

Candidate Starts for JangDynasty_101:

(Start: 8 @62980 has 39 MA's), (19, 62869), (20, 62839), (25, 62800), (26, 62791), (27, 62782), (28, 62764), (29, 62758), (34, 62716), (35, 62710), (36, 62704), (37, 62692),

Gene: Jeon_45 Start: 41111, Stop: 41527, Start Num: 9

Candidate Starts for Jeon_45:

(Start: 4 @41081 has 2 MA's), (Start: 9 @41111 has 8 MA's), (11, 41147), (16, 41189), (19, 41219), (25, 41285), (28, 41321), (30, 41336), (45, 41477), (46, 41495),

Gene: KatherineG_97 Start: 50274, Stop: 49909, Start Num: 8

Candidate Starts for KatherineG_97:

(Start: 8 @50274 has 39 MA's), (22, 50127), (25, 50094), (28, 50058), (30, 50043),

Gene: KingPhillip3_103 Start: 64337, Stop: 63930, Start Num: 8

Candidate Starts for KingPhillip3_103:

(Start: 8 @64337 has 39 MA's), (19, 64226), (20, 64196), (25, 64157), (26, 64148), (27, 64139), (28, 64121), (29, 64115), (34, 64073), (35, 64067), (36, 64061), (37, 64049),

Gene: Krili_107 Start: 64179, Stop: 63772, Start Num: 8

Candidate Starts for Krili_107:

(Start: 8 @64179 has 39 MA's), (19, 64068), (20, 64038), (25, 63999), (26, 63990), (27, 63981), (28, 63963), (29, 63957), (34, 63915), (35, 63909), (36, 63903), (37, 63891),

Gene: MadKillah_108 Start: 63702, Stop: 63295, Start Num: 8

Candidate Starts for MadKillah_108:

(Start: 8 @63702 has 39 MA's), (19, 63591), (20, 63561), (25, 63522), (26, 63513), (27, 63504), (28, 63486), (29, 63480), (34, 63438), (35, 63432), (36, 63426), (37, 63414),

Gene: Megabear_45 Start: 40526, Stop: 40942, Start Num: 9

Candidate Starts for Megabear_45:

(Start: 4 @40496 has 2 MA's), (Start: 9 @40526 has 8 MA's), (11, 40562), (16, 40604), (19, 40634), (25, 40700), (28, 40736), (30, 40751), (45, 40892), (46, 40910),

Gene: Mila11_93 Start: 58510, Stop: 58016, Start Num: 5

Candidate Starts for Mila11_93:

(Start: 5 @58510 has 2 MA's), (13, 58438), (25, 58303), (36, 58195), (37, 58183), (40, 58147),

Gene: Mori_105 Start: 64205, Stop: 63798, Start Num: 8
Candidate Starts for Mori_105:
(Start: 8 @64205 has 39 MA's), (19, 64094), (20, 64064), (25, 64025), (26, 64016), (27, 64007), (28, 63989), (29, 63983), (34, 63941), (35, 63935), (36, 63929), (37, 63917),

Gene: MorillMayhem_91 Start: 57349, Stop: 56855, Start Num: 5
Candidate Starts for MorillMayhem_91:
(Start: 5 @57349 has 2 MA's), (13, 57277), (25, 57142), (36, 57034), (37, 57022), (40, 56986),

Gene: MrMiyagi_42 Start: 34996, Stop: 35358, Start Num: 9
Candidate Starts for MrMiyagi_42:
(Start: 4 @34969 has 2 MA's), (6, 34984), (7, 34990), (Start: 9 @34996 has 8 MA's), (10, 35014), (11, 35032), (17, 35098), (21, 35149), (25, 35179), (28, 35215), (33, 35242), (38, 35293),

Gene: Murai_105 Start: 64053, Stop: 63646, Start Num: 8
Candidate Starts for Murai_105:
(Start: 8 @64053 has 39 MA's), (19, 63942), (20, 63912), (25, 63873), (26, 63864), (27, 63855), (28, 63837), (29, 63831), (34, 63789), (35, 63783), (36, 63777), (37, 63765),

Gene: Nedarya_97 Start: 50930, Stop: 50544, Start Num: 8
Candidate Starts for Nedarya_97:
(2, 51008), (Start: 8 @50930 has 39 MA's), (14, 50867), (23, 50759), (24, 50756), (25, 50732), (28, 50696), (35, 50654), (39, 50606),

Gene: NiebruSaylor_105 Start: 63320, Stop: 62913, Start Num: 8
Candidate Starts for NiebruSaylor_105:
(Start: 8 @63320 has 39 MA's), (19, 63209), (20, 63179), (25, 63140), (26, 63131), (27, 63122), (28, 63104), (29, 63098), (34, 63056), (35, 63050), (36, 63044), (37, 63032),

Gene: Oofda_97 Start: 50564, Stop: 50178, Start Num: 8
Candidate Starts for Oofda_97:
(3, 50621), (Start: 8 @50564 has 39 MA's), (20, 50426), (25, 50384), (28, 50348), (35, 50306), (37, 50288), (39, 50258), (43, 50222), (44, 50216),

Gene: PR_45 Start: 41100, Stop: 41546, Start Num: 4
Candidate Starts for PR_45:
(Start: 4 @41100 has 2 MA's), (Start: 9 @41130 has 8 MA's), (11, 41166), (16, 41208), (19, 41238), (25, 41304), (28, 41340), (30, 41355), (45, 41496), (46, 41514),

Gene: Ravana_96 Start: 50673, Stop: 50314, Start Num: 8
Candidate Starts for Ravana_96:
(3, 50730), (Start: 8 @50673 has 39 MA's), (25, 50496), (28, 50460),

Gene: Remus_98 Start: 50599, Stop: 50213, Start Num: 8
Candidate Starts for Remus_98:
(Start: 8 @50599 has 39 MA's), (20, 50461), (25, 50419), (28, 50383), (35, 50341), (37, 50323), (39, 50293), (43, 50257), (44, 50251),

Gene: Rosalind_97 Start: 50038, Stop: 49673, Start Num: 8
Candidate Starts for Rosalind_97:
(Start: 8 @50038 has 39 MA's), (22, 49891), (25, 49858), (28, 49822), (30, 49807),

Gene: Ryadel_109 Start: 65038, Stop: 64631, Start Num: 8

Candidate Starts for Ryadel_109:

(Start: 8 @65038 has 39 MA's), (19, 64927), (20, 64897), (25, 64858), (26, 64849), (27, 64840), (28, 64822), (29, 64816), (34, 64774), (35, 64768), (36, 64762), (37, 64750),

Gene: SchoolBus_104 Start: 63796, Stop: 63389, Start Num: 8

Candidate Starts for SchoolBus_104:

(Start: 8 @63796 has 39 MA's), (19, 63685), (20, 63655), (25, 63616), (26, 63607), (27, 63598), (28, 63580), (29, 63574), (34, 63532), (35, 63526), (36, 63520), (37, 63508),

Gene: Schuy_105 Start: 63415, Stop: 63008, Start Num: 8

Candidate Starts for Schuy_105:

(Start: 8 @63415 has 39 MA's), (19, 63304), (20, 63274), (25, 63235), (26, 63226), (27, 63217), (28, 63199), (29, 63193), (34, 63151), (35, 63145), (36, 63139), (37, 63127),

Gene: Shida_107 Start: 64307, Stop: 63900, Start Num: 8

Candidate Starts for Shida_107:

(Start: 8 @64307 has 39 MA's), (19, 64196), (20, 64166), (25, 64127), (26, 64118), (27, 64109), (28, 64091), (29, 64085), (34, 64043), (35, 64037), (36, 64031), (37, 64019),

Gene: SlySloth_94 Start: 56902, Stop: 56408, Start Num: 5

Candidate Starts for SlySloth_94:

(Start: 5 @56902 has 2 MA's), (13, 56830), (25, 56695), (35, 56593), (36, 56587), (37, 56575), (41, 56530), (42, 56521),

Gene: Smooch_104 Start: 64188, Stop: 63781, Start Num: 8

Candidate Starts for Smooch_104:

(Start: 8 @64188 has 39 MA's), (19, 64077), (20, 64047), (25, 64008), (26, 63999), (27, 63990), (28, 63972), (29, 63966), (34, 63924), (35, 63918), (36, 63912), (37, 63900),

Gene: Soups_98 Start: 50515, Stop: 50150, Start Num: 8

Candidate Starts for Soups_98:

(Start: 8 @50515 has 39 MA's), (22, 50368), (25, 50335), (28, 50299), (30, 50284),

Gene: Squash_94 Start: 57493, Stop: 56999, Start Num: 5

Candidate Starts for Squash_94:

(Start: 5 @57493 has 2 MA's), (13, 57421), (25, 57286), (36, 57178), (37, 57166), (40, 57130),

Gene: Strosahl_98 Start: 50599, Stop: 50213, Start Num: 8

Candidate Starts for Strosahl_98:

(Start: 8 @50599 has 39 MA's), (20, 50461), (25, 50419), (28, 50383), (35, 50341), (37, 50323), (39, 50293), (43, 50257), (44, 50251),

Gene: Taptic_45 Start: 40526, Stop: 40942, Start Num: 9

Candidate Starts for Taptic_45:

(Start: 4 @40496 has 2 MA's), (Start: 9 @40526 has 8 MA's), (11, 40562), (16, 40604), (19, 40634), (25, 40700), (28, 40736), (30, 40751), (45, 40892), (46, 40910),

Gene: TelAviv_102 Start: 64032, Stop: 63625, Start Num: 8

Candidate Starts for TelAviv_102:

(Start: 8 @64032 has 39 MA's), (19, 63921), (20, 63891), (25, 63852), (26, 63843), (27, 63834), (28, 63816), (29, 63810), (34, 63768), (35, 63762), (36, 63756), (37, 63744),

Gene: Vagabond_104 Start: 63463, Stop: 63056, Start Num: 8

Candidate Starts for Vagabond_104:

(Start: 8 @63463 has 39 MA's), (19, 63352), (20, 63322), (25, 63283), (26, 63274), (27, 63265), (28, 63247), (29, 63241), (34, 63199), (35, 63193), (36, 63187), (37, 63175),

Gene: Vorrps_105 Start: 64206, Stop: 63799, Start Num: 8

Candidate Starts for Vorrps_105:

(Start: 8 @64206 has 39 MA's), (19, 64095), (20, 64065), (25, 64026), (26, 64017), (27, 64008), (28, 63990), (29, 63984), (34, 63942), (35, 63936), (36, 63930), (37, 63918),

Gene: Waits_96 Start: 50212, Stop: 49826, Start Num: 8

Candidate Starts for Waits_96:

(Start: 8 @50212 has 39 MA's), (20, 50074), (25, 50032), (28, 49996), (35, 49954), (37, 49936), (39, 49906), (43, 49870), (44, 49864),

Gene: Wildflower_102 Start: 62215, Stop: 61808, Start Num: 8

Candidate Starts for Wildflower_102:

(Start: 8 @62215 has 39 MA's), (19, 62104), (20, 62074), (25, 62035), (26, 62026), (27, 62017), (28, 61999), (29, 61993), (34, 61951), (35, 61945), (36, 61939), (37, 61927),

Gene: Winget_105 Start: 64100, Stop: 63693, Start Num: 8

Candidate Starts for Winget_105:

(Start: 8 @64100 has 39 MA's), (19, 63989), (20, 63959), (25, 63920), (26, 63911), (27, 63902), (28, 63884), (29, 63878), (34, 63836), (35, 63830), (36, 63824), (37, 63812),

Gene: Wogge42_102 Start: 63387, Stop: 62980, Start Num: 8

Candidate Starts for Wogge42_102:

(Start: 8 @63387 has 39 MA's), (19, 63276), (20, 63246), (25, 63207), (26, 63198), (27, 63189), (28, 63171), (29, 63165), (34, 63123), (35, 63117), (36, 63111), (37, 63099),

Gene: YoyoKar_102 Start: 63368, Stop: 62961, Start Num: 8

Candidate Starts for YoyoKar_102:

(Start: 8 @63368 has 39 MA's), (19, 63257), (20, 63227), (25, 63188), (26, 63179), (27, 63170), (28, 63152), (29, 63146), (34, 63104), (35, 63098), (36, 63092), (37, 63080),

Gene: YungJamal_104 Start: 63263, Stop: 62856, Start Num: 8

Candidate Starts for YungJamal_104:

(Start: 8 @63263 has 39 MA's), (19, 63152), (20, 63122), (25, 63083), (26, 63074), (27, 63065), (28, 63047), (29, 63041), (34, 62999), (35, 62993), (36, 62987), (37, 62975),

Gene: Zakhe101_100 Start: 62320, Stop: 61913, Start Num: 8

Candidate Starts for Zakhe101_100:

(Start: 8 @62320 has 39 MA's), (19, 62209), (20, 62179), (25, 62140), (26, 62131), (27, 62122), (28, 62104), (29, 62098), (34, 62056), (35, 62050), (36, 62044), (37, 62032),

Gene: Zebo_104 Start: 63796, Stop: 63389, Start Num: 8

Candidate Starts for Zebo_104:

(Start: 8 @63796 has 39 MA's), (19, 63685), (20, 63655), (25, 63616), (26, 63607), (27, 63598), (28, 63580), (29, 63574), (34, 63532), (35, 63526), (36, 63520), (37, 63508),