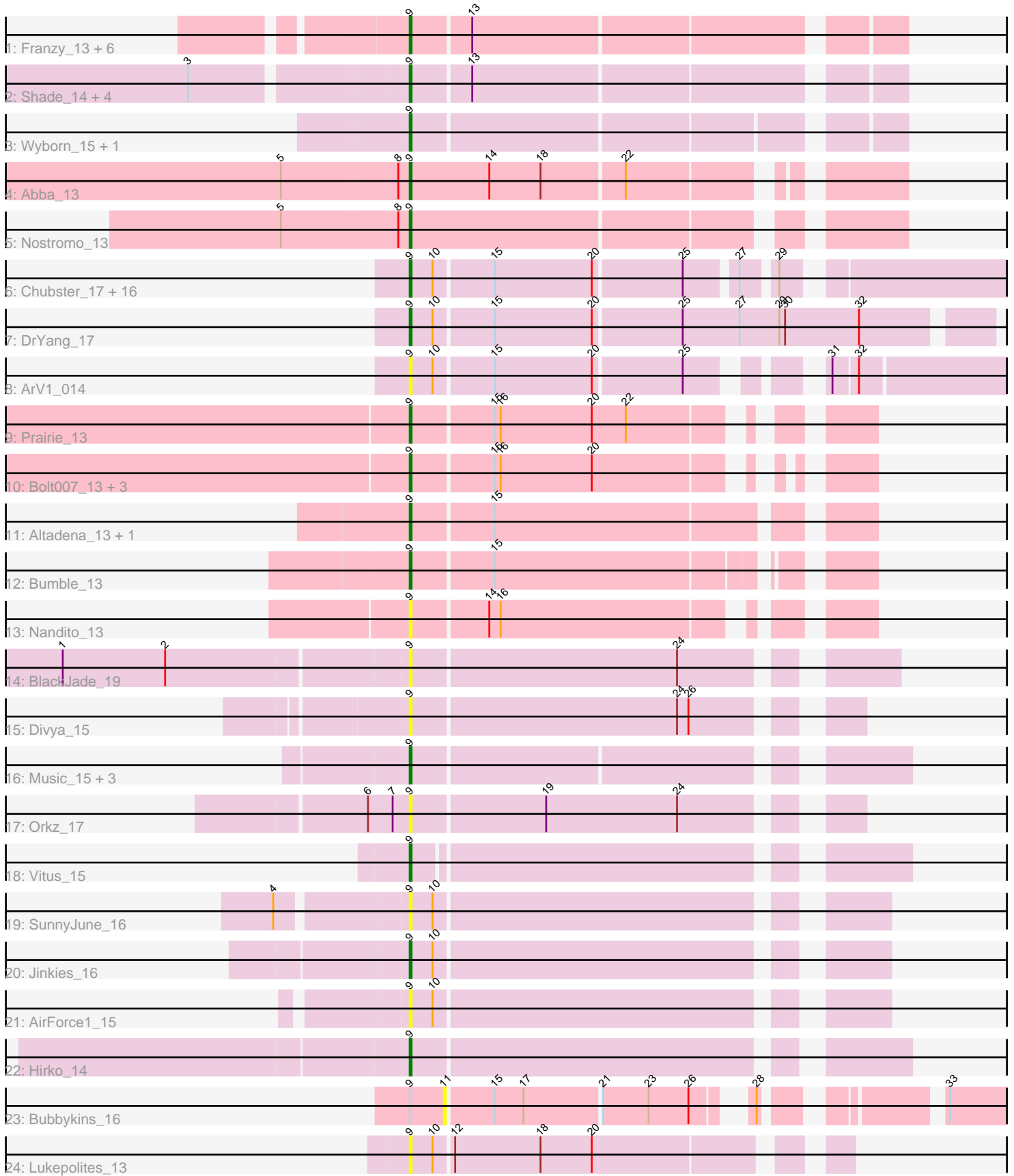


Pham 305039



Note: Tracks are now grouped by subcluster and scaled. Switching in subcluster is indicated by changes in track color. Track scale is now set by default to display the region 30 bp upstream of start 1 to 30 bp downstream of the last possible start. If this default region is judged to be packed too tightly with annotated starts, the track will be further scaled to only show that region of the ORF with annotated starts. This action will be indicated by adding "Zoomed" to the title. For starts, yellow indicates the location of called starts comprised solely of Glimmer/GeneMark auto-annotations, green indicates the location of called starts with at least 1 manual gene annotation.

Pham 305039 Report

This analysis was run 06/08/26 on database version 649.

Pham number 305039 has 58 members, 13 are drafts.

Phages represented in each track:

- Track 1 : Franzy_13, Jawnski_13, NathanVaag_13, Brent_13, Piccoletto_13, Beans_13, King2_13
- Track 2 : Shade_14, BossLady_14, Grekaycon_14, Martha_14, TaeYoung_14
- Track 3 : Wyborn_15, Sicarius2_15
- Track 4 : Abba_13
- Track 5 : Nostromo_13
- Track 6 : Chubster_17, Lymara_17, JaNo_17, RosiePosie_17, Chipper1996_170, EdgarPoe_17, Linus_17, Tophat_17, HumptyDumpty_17, Mordred_17, JayCookie_17, MoyaNatalis_17, Chocolat_17, Kabreeze_17, Conboy_17, PrincessTrina_17, Scavito_17
- Track 7 : DrYang_17
- Track 8 : ArV1_014
- Track 9 : Prairie_13
- Track 10 : Bolt007_13, Lilmac1015_13, Klevey_13, CalWood4100_13
- Track 11 : Altadena_13, Circuit_13
- Track 12 : Bumble_13
- Track 13 : Nandito_13
- Track 14 : BlackJade_19
- Track 15 : Divya_15
- Track 16 : Music_15, Gooberta_15, GoldDust_15, Vibaki_15
- Track 17 : Orkz_17
- Track 18 : Vitus_15
- Track 19 : SunnyJune_16
- Track 20 : Jinkies_16
- Track 21 : AirForce1_15
- Track 22 : Hirko_14
- Track 23 : Bubbykins_16
- Track 24 : Lukepolites_13

Summary of Final Annotations (See graph section above for start numbers):

The start number called the most often in the published annotations is 9, it was called in 45 of the 45 non-draft genes in the pham.

Genes that call this "Most Annotated" start:

- Abba_13, AirForce1_15, Altadena_13, ArV1_014, Beans_13, BlackJade_19, Bolt007_13, BossLady_14, Brent_13, Bumble_13, CalWood4100_13, Chipper1996_170, Chocolat_17, Chubster_17, Circuit_13, Conboy_17, Divya_15, DrYang_17, EdgarPoe_17, Franzy_13, GoldDust_15, Gooberta_15, Grekaycon_14, Hirko_14, HumptyDumpty_17, JaNo_17, Jawnski_13, JayCookie_17, Jinkies_16, Kabreeze_17, King2_13, Klevey_13, Lilmac1015_13, Linus_17, Lukepolites_13, Lymara_17, Martha_14, Mordred_17, MoyaNatalis_17, Music_15, Nandito_13, NathanVaag_13, Nostromo_13, Orkz_17, Piccoletto_13, Prairie_13, PrincessTrina_17, RosiePosie_17, Scavito_17, Shade_14, Sicarius2_15, SunnyJune_16, TaeYoung_14, Tophat_17, Vibaki_15, Vitus_15, Wyborn_15,

Genes that have the "Most Annotated" start but do not call it:

- Bubbykins_16,

Genes that do not have the "Most Annotated" start:

-

Summary by start number:

Start 9:

- Found in 58 of 58 (100.0%) of genes in pham
- Manual Annotations of this start: 45 of 45
- Called 98.3% of time when present
- Phage (with cluster) where this start called: Abba_13 (AO3), AirForce1_15 (FL), Altadena_13 (FH), ArV1_014 (AR), Beans_13 (AO1), BlackJade_19 (FL), Bolt007_13 (FH), BossLady_14 (AO2), Brent_13 (AO1), Bumble_13 (FH), CalWood4100_13 (FH), Chipper1996_170 (AR), Chocolat_17 (AR), Chubster_17 (AR), Circuit_13 (FH), Conboy_17 (AR), Divya_15 (FL), DrYang_17 (AR), EdgarPoe_17 (AR), Franzy_13 (AO1), GoldDust_15 (FL), Gooberta_15 (FL), Grekaycon_14 (AO2), Hirko_14 (FL), HumptyDumpty_17 (AR), JaNo_17 (AR), Jawnski_13 (AO1), JayCookie_17 (AR), Jinkies_16 (FL), Kabreeze_17 (AR), King2_13 (AO1), Klevey_13 (FH), Lilmac1015_13 (FH), Linus_17 (AR), Lukepolites_13 (singleton), Lymara_17 (AR), Martha_14 (AO2), Mordred_17 (AR), MoyaNatalis_17 (AR), Music_15 (FL), Nandito_13 (FH), NathanVaag_13 (AO1), Nostromo_13 (AO3), Orkz_17 (FL), Piccoletto_13 (AO1), Prairie_13 (FH), PrincessTrina_17 (AR), RosiePosie_17 (AR), Scavito_17 (AR), Shade_14 (AO2), Sicarius2_15 (AO2), SunnyJune_16 (FL), TaeYoung_14 (AO2), Tophat_17 (AR), Vibaki_15 (FL), Vitus_15 (FL), Wyborn_15 (AO2),

Start 11:

- Found in 1 of 58 (1.7%) of genes in pham
- No Manual Annotations of this start.
- Called 100.0% of time when present
- Phage (with cluster) where this start called: Bubbykins_16 (UNK),

Summary by clusters:

There are 8 clusters represented in this pham: singleton, AR, AO3, AO2, AO1, FH, UNK, FL,

Info for manual annotations of cluster AO1:

- Start number 9 was manually annotated 7 times for cluster AO1.

Info for manual annotations of cluster AO2:

- Start number 9 was manually annotated 7 times for cluster AO2.

Info for manual annotations of cluster AO3:

- Start number 9 was manually annotated 2 times for cluster AO3.

Info for manual annotations of cluster AR:

- Start number 9 was manually annotated 17 times for cluster AR.

Info for manual annotations of cluster FH:

- Start number 9 was manually annotated 7 times for cluster FH.

Info for manual annotations of cluster FL:

- Start number 9 was manually annotated 5 times for cluster FL.

Gene Information:

Gene: Abba_13 Start: 10446, Stop: 10676, Start Num: 9

Candidate Starts for Abba_13:

(5, 10380), (8, 10440), (Start: 9 @10446 has 45 MA's), (14, 10488), (18, 10515), (22, 10557),

Gene: AirForce1_15 Start: 10338, Stop: 10562, Start Num: 9

Candidate Starts for AirForce1_15:

(Start: 9 @10338 has 45 MA's), (10, 10350),

Gene: Altadena_13 Start: 10131, Stop: 10352, Start Num: 9

Candidate Starts for Altadena_13:

(Start: 9 @10131 has 45 MA's), (15, 10173),

Gene: ArV1_014 Start: 10967, Stop: 11242, Start Num: 9

Candidate Starts for ArV1_014:

(Start: 9 @10967 has 45 MA's), (10, 10979), (15, 11009), (20, 11060), (25, 11105), (31, 11153), (32, 11165),

Gene: Beans_13 Start: 10336, Stop: 10575, Start Num: 9

Candidate Starts for Beans_13:

(Start: 9 @10336 has 45 MA's), (13, 10366),

Gene: BlackJade_19 Start: 12286, Stop: 12516, Start Num: 9

Candidate Starts for BlackJade_19:

(1, 12109), (2, 12163), (Start: 9 @12286 has 45 MA's), (24, 12424),

Gene: Bolt007_13 Start: 10029, Stop: 10229, Start Num: 9

Candidate Starts for Bolt007_13:

(Start: 9 @10029 has 45 MA's), (15, 10071), (16, 10074), (20, 10122),

Gene: BossLady_14 Start: 10652, Stop: 10891, Start Num: 9

Candidate Starts for BossLady_14:

(3, 10544), (Start: 9 @10652 has 45 MA's), (13, 10682),

Gene: Brent_13 Start: 10318, Stop: 10557, Start Num: 9

Candidate Starts for Brent_13:

(Start: 9 @10318 has 45 MA's), (13, 10348),

Gene: Bubbykins_16 Start: 12202, Stop: 12444, Start Num: 11

Candidate Starts for Bubbykins_16:

(Start: 9 @12184 has 45 MA's), (11, 12202), (15, 12226), (17, 12241), (21, 12280), (23, 12304), (26, 12325), (28, 12343), (33, 12412),

Gene: Bumble_13 Start: 10130, Stop: 10345, Start Num: 9

Candidate Starts for Bumble_13:

(Start: 9 @10130 has 45 MA's), (15, 10172),

Gene: CalWood4100_13 Start: 10012, Stop: 10218, Start Num: 9

Candidate Starts for CalWood4100_13:

(Start: 9 @10012 has 45 MA's), (15, 10054), (16, 10057), (20, 10105),

Gene: Chipper1996_170 Start: 12616, Stop: 12897, Start Num: 9

Candidate Starts for Chipper1996_170:

(Start: 9 @12616 has 45 MA's), (10, 12628), (15, 12658), (20, 12709), (25, 12754), (27, 12778), (29, 12793),

Gene: Chocolat_17 Start: 12617, Stop: 12898, Start Num: 9

Candidate Starts for Chocolat_17:

(Start: 9 @12617 has 45 MA's), (10, 12629), (15, 12659), (20, 12710), (25, 12755), (27, 12779), (29, 12794),

Gene: Chubster_17 Start: 12387, Stop: 12668, Start Num: 9

Candidate Starts for Chubster_17:

(Start: 9 @12387 has 45 MA's), (10, 12399), (15, 12429), (20, 12480), (25, 12525), (27, 12549), (29, 12564),

Gene: Circuit_13 Start: 10115, Stop: 10333, Start Num: 9

Candidate Starts for Circuit_13:

(Start: 9 @10115 has 45 MA's), (15, 10157),

Gene: Conboy_17 Start: 12615, Stop: 12896, Start Num: 9

Candidate Starts for Conboy_17:

(Start: 9 @12615 has 45 MA's), (10, 12627), (15, 12657), (20, 12708), (25, 12753), (27, 12777), (29, 12792),

Gene: Divya_15 Start: 10634, Stop: 10846, Start Num: 9

Candidate Starts for Divya_15:

(Start: 9 @10634 has 45 MA's), (24, 10772), (26, 10778),

Gene: DrYang_17 Start: 12571, Stop: 12864, Start Num: 9

Candidate Starts for DrYang_17:

(Start: 9 @12571 has 45 MA's), (10, 12583), (15, 12613), (20, 12664), (25, 12709), (27, 12739), (29, 12760), (30, 12763), (32, 12802),

Gene: EdgarPoe_17 Start: 12615, Stop: 12896, Start Num: 9

Candidate Starts for EdgarPoe_17:

(Start: 9 @12615 has 45 MA's), (10, 12627), (15, 12657), (20, 12708), (25, 12753), (27, 12777), (29, 12792),

Gene: Franzy_13 Start: 10318, Stop: 10557, Start Num: 9
Candidate Starts for Franzy_13:
(Start: 9 @10318 has 45 MA's), (13, 10348),

Gene: GoldDust_15 Start: 12216, Stop: 12449, Start Num: 9
Candidate Starts for GoldDust_15:
(Start: 9 @12216 has 45 MA's),

Gene: Gooberta_15 Start: 12216, Stop: 12449, Start Num: 9
Candidate Starts for Gooberta_15:
(Start: 9 @12216 has 45 MA's),

Gene: Grekaycon_14 Start: 10661, Stop: 10900, Start Num: 9
Candidate Starts for Grekaycon_14:
(3, 10553), (Start: 9 @10661 has 45 MA's), (13, 10691),

Gene: Hirko_14 Start: 11651, Stop: 11887, Start Num: 9
Candidate Starts for Hirko_14:
(Start: 9 @11651 has 45 MA's),

Gene: HumptyDumpty_17 Start: 12614, Stop: 12895, Start Num: 9
Candidate Starts for HumptyDumpty_17:
(Start: 9 @12614 has 45 MA's), (10, 12626), (15, 12656), (20, 12707), (25, 12752), (27, 12776), (29, 12791),

Gene: JaNo_17 Start: 12614, Stop: 12895, Start Num: 9
Candidate Starts for JaNo_17:
(Start: 9 @12614 has 45 MA's), (10, 12626), (15, 12656), (20, 12707), (25, 12752), (27, 12776), (29, 12791),

Gene: Jawnski_13 Start: 10331, Stop: 10570, Start Num: 9
Candidate Starts for Jawnski_13:
(Start: 9 @10331 has 45 MA's), (13, 10361),

Gene: JayCookie_17 Start: 12617, Stop: 12898, Start Num: 9
Candidate Starts for JayCookie_17:
(Start: 9 @12617 has 45 MA's), (10, 12629), (15, 12659), (20, 12710), (25, 12755), (27, 12779), (29, 12794),

Gene: Jinkies_16 Start: 12256, Stop: 12480, Start Num: 9
Candidate Starts for Jinkies_16:
(Start: 9 @12256 has 45 MA's), (10, 12268),

Gene: Kabreeze_17 Start: 12614, Stop: 12895, Start Num: 9
Candidate Starts for Kabreeze_17:
(Start: 9 @12614 has 45 MA's), (10, 12626), (15, 12656), (20, 12707), (25, 12752), (27, 12776), (29, 12791),

Gene: King2_13 Start: 10320, Stop: 10559, Start Num: 9
Candidate Starts for King2_13:

(Start: 9 @10320 has 45 MA's), (13, 10350),

Gene: Klevey_13 Start: 10022, Stop: 10228, Start Num: 9

Candidate Starts for Klevey_13:

(Start: 9 @10022 has 45 MA's), (15, 10064), (16, 10067), (20, 10115),

Gene: Lilmac1015_13 Start: 10012, Stop: 10218, Start Num: 9

Candidate Starts for Lilmac1015_13:

(Start: 9 @10012 has 45 MA's), (15, 10054), (16, 10057), (20, 10105),

Gene: Linus_17 Start: 12614, Stop: 12895, Start Num: 9

Candidate Starts for Linus_17:

(Start: 9 @12614 has 45 MA's), (10, 12626), (15, 12656), (20, 12707), (25, 12752), (27, 12776), (29, 12791),

Gene: Lukepolites_13 Start: 10365, Stop: 10571, Start Num: 9

Candidate Starts for Lukepolites_13:

(Start: 9 @10365 has 45 MA's), (10, 10377), (12, 10386), (18, 10431), (20, 10458),

Gene: Lymara_17 Start: 12616, Stop: 12897, Start Num: 9

Candidate Starts for Lymara_17:

(Start: 9 @12616 has 45 MA's), (10, 12628), (15, 12658), (20, 12709), (25, 12754), (27, 12778), (29, 12793),

Gene: Martha_14 Start: 10599, Stop: 10838, Start Num: 9

Candidate Starts for Martha_14:

(3, 10491), (Start: 9 @10599 has 45 MA's), (13, 10629),

Gene: Mordred_17 Start: 12614, Stop: 12895, Start Num: 9

Candidate Starts for Mordred_17:

(Start: 9 @12614 has 45 MA's), (10, 12626), (15, 12656), (20, 12707), (25, 12752), (27, 12776), (29, 12791),

Gene: MoyaNatalis_17 Start: 12617, Stop: 12898, Start Num: 9

Candidate Starts for MoyaNatalis_17:

(Start: 9 @12617 has 45 MA's), (10, 12629), (15, 12659), (20, 12710), (25, 12755), (27, 12779), (29, 12794),

Gene: Music_15 Start: 12086, Stop: 12319, Start Num: 9

Candidate Starts for Music_15:

(Start: 9 @12086 has 45 MA's),

Gene: Nandito_13 Start: 10109, Stop: 10318, Start Num: 9

Candidate Starts for Nandito_13:

(Start: 9 @10109 has 45 MA's), (14, 10148), (16, 10154),

Gene: NathanVaag_13 Start: 10324, Stop: 10563, Start Num: 9

Candidate Starts for NathanVaag_13:

(Start: 9 @10324 has 45 MA's), (13, 10354),

Gene: Nostromo_13 Start: 10650, Stop: 10883, Start Num: 9

Candidate Starts for Nostromo_13:

(5, 10584), (8, 10644), (Start: 9 @10650 has 45 MA's),

Gene: Orkz_17 Start: 10714, Stop: 10926, Start Num: 9

Candidate Starts for Orkz_17:

(6, 10693), (7, 10705), (Start: 9 @10714 has 45 MA's), (19, 10783), (24, 10852),

Gene: Piccoletto_13 Start: 10325, Stop: 10564, Start Num: 9

Candidate Starts for Piccoletto_13:

(Start: 9 @10325 has 45 MA's), (13, 10355),

Gene: Prairie_13 Start: 10019, Stop: 10225, Start Num: 9

Candidate Starts for Prairie_13:

(Start: 9 @10019 has 45 MA's), (15, 10061), (16, 10064), (20, 10112), (22, 10130),

Gene: PrincessTrina_17 Start: 12617, Stop: 12898, Start Num: 9

Candidate Starts for PrincessTrina_17:

(Start: 9 @12617 has 45 MA's), (10, 12629), (15, 12659), (20, 12710), (25, 12755), (27, 12779), (29, 12794),

Gene: RosiePosie_17 Start: 12617, Stop: 12898, Start Num: 9

Candidate Starts for RosiePosie_17:

(Start: 9 @12617 has 45 MA's), (10, 12629), (15, 12659), (20, 12710), (25, 12755), (27, 12779), (29, 12794),

Gene: Scavito_17 Start: 12614, Stop: 12895, Start Num: 9

Candidate Starts for Scavito_17:

(Start: 9 @12614 has 45 MA's), (10, 12626), (15, 12656), (20, 12707), (25, 12752), (27, 12776), (29, 12791),

Gene: Shade_14 Start: 10637, Stop: 10876, Start Num: 9

Candidate Starts for Shade_14:

(3, 10529), (Start: 9 @10637 has 45 MA's), (13, 10667),

Gene: Sicarius2_15 Start: 11144, Stop: 11380, Start Num: 9

Candidate Starts for Sicarius2_15:

(Start: 9 @11144 has 45 MA's),

Gene: SunnyJune_16 Start: 12120, Stop: 12344, Start Num: 9

Candidate Starts for SunnyJune_16:

(4, 12057), (Start: 9 @12120 has 45 MA's), (10, 12132),

Gene: TaeYoung_14 Start: 10662, Stop: 10901, Start Num: 9

Candidate Starts for TaeYoung_14:

(3, 10554), (Start: 9 @10662 has 45 MA's), (13, 10692),

Gene: Tophat_17 Start: 12616, Stop: 12897, Start Num: 9

Candidate Starts for Tophat_17:

(Start: 9 @12616 has 45 MA's), (10, 12628), (15, 12658), (20, 12709), (25, 12754), (27, 12778), (29, 12793),

Gene: Vibaki_15 Start: 12095, Stop: 12331, Start Num: 9

Candidate Starts for Vibaki_15:

(Start: 9 @12095 has 45 MA's),

Gene: Vitus_15 Start: 11899, Stop: 12132, Start Num: 9
Candidate Starts for Vitus_15:
(Start: 9 @11899 has 45 MA's),

Gene: Wyborn_15 Start: 11005, Stop: 11241, Start Num: 9
Candidate Starts for Wyborn_15:
(Start: 9 @11005 has 45 MA's),