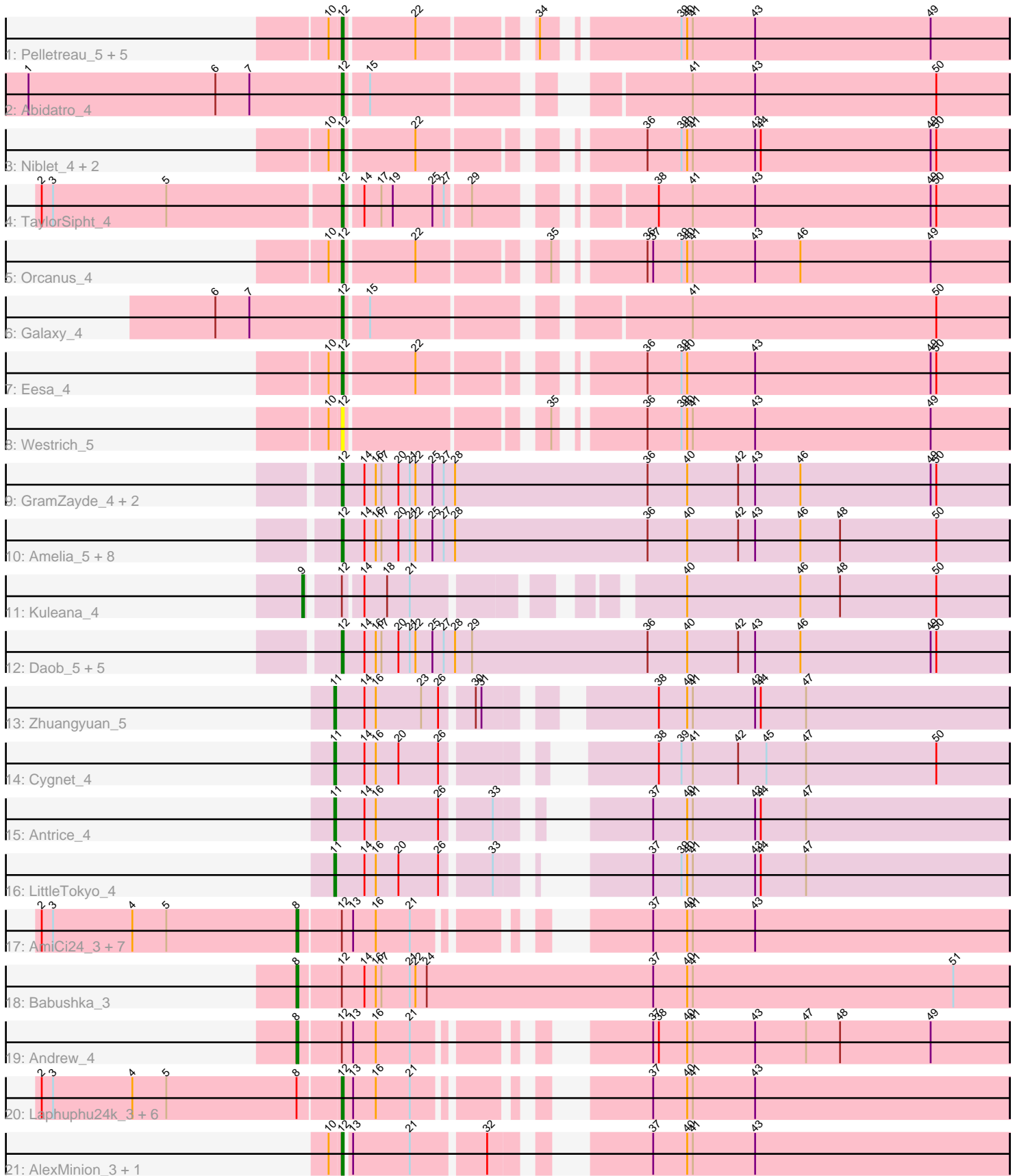


Pham 305047



Note: Tracks are now grouped by subcluster and scaled. Switching in subcluster is indicated by changes in track color. Track scale is now set by default to display the region 30 bp upstream of start 1 to 30 bp downstream of the last possible start. If this default region is judged to be packed too tightly with annotated starts, the track will be further scaled to only show that region of the ORF with annotated starts. This action will be indicated by adding "Zoomed" to the title. For starts, yellow indicates the location of called starts comprised solely of Glimmer/GeneMark auto-annotations, green indicates the location of called starts with at least 1 manual gene annotation.

Pham 305047 Report

This analysis was run 06/08/26 on database version 649.

Pham number 305047 has 57 members, 16 are drafts.

Phages represented in each track:

- Track 1 : Pelletreau_5, Amanises_5, KendraB23_5, Shen_5, Gravel_5, Toad24_5
- Track 2 : Abidatro_4
- Track 3 : Niblet_4, Chicken_4, Zixiang_4
- Track 4 : TaylorSipht_4
- Track 5 : Orcanus_4
- Track 6 : Galaxy_4
- Track 7 : Eesa_4
- Track 8 : Westrich_5
- Track 9 : GramZayde_4, Bibble12_5, HannahPhantana_5
- Track 10 : Amelia_5, Cote_5, Lunar_5, Pineda_5, PhirstandPhine_5, Damocles_5, Bedetta_5, Jerole_5, Melons_5
- Track 11 : Kuleana_4
- Track 12 : Daob_5, Polka_4, Kepler_4, Colusalem_4, Coral_4, OtsoOtso_4
- Track 13 : Zhuangyuan_5
- Track 14 : Cygnet_4
- Track 15 : Antrice_4
- Track 16 : LittleTokyo_4
- Track 17 : AmiCi24_3, DanHam62_3, PhluffyCoco_3, Atlantica_3, Glotell_3, Fingolfin_3, RedFox_3, Juno112_3
- Track 18 : Babushka_3
- Track 19 : Andrew_4
- Track 20 : Laphuphu24k_3, Oppalora_3, Amphitrite_3, KHumphrey_3, HamCheese_3, AdoptaAdorbs_3, Camara_3
- Track 21 : AlexMinion_3, StuartMinion_3

Summary of Final Annotations (See graph section above for start numbers):

The start number called the most often in the published annotations is 12, it was called in 26 of the 41 non-draft genes in the pham.

Genes that call this "Most Annotated" start:

- Abidatro_4, AdoptaAdorbs_3, AlexMinion_3, Amanises_5, Amelia_5, Amphitrite_3, Bedetta_5, Bibble12_5, Camara_3, Chicken_4, Colusalem_4, Coral_4, Cote_5, Damocles_5, Daob_5, Eesa_4, Galaxy_4, GramZayde_4, Gravel_5, HamCheese_3,

HannahPhantana_5, Jerole_5, KHumphrey_3, KendraB23_5, Kepler_4, Laphuphu24k_3, Lunar_5, Melons_5, Niblet_4, Oppalora_3, Orcanus_4, OtsoOtso_4, Pelletreau_5, PhirstandPhine_5, Pineda_5, Polka_4, Shen_5, StuartMinion_3, TaylorSipt_4, Toad24_5, Westrich_5, Zixiang_4,

Genes that have the "Most Annotated" start but do not call it:

- AmiCi24_3, Andrew_4, Atlantica_3, Babushka_3, DanHam62_3, Fingolfin_3, Glotell_3, Juno112_3, Kuleana_4, PhluffyCoco_3, RedFox_3,

Genes that do not have the "Most Annotated" start:

- Antrice_4, Cygnet_4, LittleTokyo_4, Zhuangyuan_5,

Summary by start number:

Start 8:

- Found in 17 of 57 (29.8%) of genes in pham
- Manual Annotations of this start: 10 of 41
- Called 58.8% of time when present
- Phage (with cluster) where this start called: AmiCi24_3 (AS3), Andrew_4 (AS3), Atlantica_3 (AS3), Babushka_3 (AS3), DanHam62_3 (AS3), Fingolfin_3 (AS3), Glotell_3 (AS3), Juno112_3 (AS3), PhluffyCoco_3 (AS3), RedFox_3 (AS3),

Start 9:

- Found in 1 of 57 (1.8%) of genes in pham
- Manual Annotations of this start: 1 of 41
- Called 100.0% of time when present
- Phage (with cluster) where this start called: Kuleana_4 (AS2),

Start 11:

- Found in 4 of 57 (7.0%) of genes in pham
- Manual Annotations of this start: 4 of 41
- Called 100.0% of time when present
- Phage (with cluster) where this start called: Antrice_4 (AS2), Cygnet_4 (AS2), LittleTokyo_4 (AS2), Zhuangyuan_5 (AS2),

Start 12:

- Found in 53 of 57 (93.0%) of genes in pham
- Manual Annotations of this start: 26 of 41
- Called 79.2% of time when present
- Phage (with cluster) where this start called: Abidatro_4 (AS1), AdoptaAdorbs_3 (AS3), AlexMinion_3 (AS3), Amanises_5 (AS1), Amelia_5 (AS2), Amphitrite_3 (AS3), Bedetta_5 (AS2), Bibble12_5 (AS2), Camara_3 (AS3), Chicken_4 (AS1), Colusalem_4 (AS2), Coral_4 (AS2), Cote_5 (AS2), Damocles_5 (AS2), Daob_5 (AS2), Eesa_4 (AS1), Galaxy_4 (AS1), GramZayde_4 (AS2), Gravel_5 (AS1), HamCheese_3 (AS3), HannahPhantana_5 (AS2), Jerole_5 (AS2), KHumphrey_3 (AS3), KendraB23_5 (AS1), Kepler_4 (AS2), Laphuphu24k_3 (AS3), Lunar_5 (AS2), Melons_5 (AS2), Niblet_4 (AS1), Oppalora_3 (AS3), Orcanus_4 (AS1), OtsoOtso_4 (AS2), Pelletreau_5 (AS1), PhirstandPhine_5 (AS2), Pineda_5 (AS2), Polka_4 (AS2), Shen_5 (AS1), StuartMinion_3 (AS3), TaylorSipt_4 (AS1), Toad24_5 (AS1), Westrich_5 (AS1), Zixiang_4 (AS1),

Summary by clusters:

There are 3 clusters represented in this pham: AS3, AS2, AS1,

Info for manual annotations of cluster AS1:

- Start number 12 was manually annotated 10 times for cluster AS1.

Info for manual annotations of cluster AS2:

- Start number 9 was manually annotated 1 time for cluster AS2.
- Start number 11 was manually annotated 4 times for cluster AS2.
- Start number 12 was manually annotated 12 times for cluster AS2.

Info for manual annotations of cluster AS3:

- Start number 8 was manually annotated 10 times for cluster AS3.
- Start number 12 was manually annotated 4 times for cluster AS3.

Gene Information:

Gene: Abidatro_4 Start: 2358, Stop: 2675, Start Num: 12

Candidate Starts for Abidatro_4:

(1, 2193), (6, 2292), (7, 2310), (Start: 12 @2358 has 26 MA's), (15, 2370), (41, 2508), (43, 2541), (50, 2637),

Gene: AdoptaAdorbs_3 Start: 2010, Stop: 2318, Start Num: 12

Candidate Starts for AdoptaAdorbs_3:

(2, 1854), (3, 1860), (4, 1902), (5, 1920), (Start: 8 @1989 has 10 MA's), (Start: 12 @2010 has 26 MA's), (13, 2016), (16, 2028), (21, 2046), (37, 2130), (40, 2148), (41, 2151), (43, 2184),

Gene: AlexMinion_3 Start: 2011, Stop: 2325, Start Num: 12

Candidate Starts for AlexMinion_3:

(10, 2005), (Start: 12 @2011 has 26 MA's), (13, 2014), (21, 2044), (32, 2080), (37, 2137), (40, 2155), (41, 2158), (43, 2191),

Gene: Amanises_5 Start: 2556, Stop: 2876, Start Num: 12

Candidate Starts for Amanises_5:

(10, 2550), (Start: 12 @2556 has 26 MA's), (22, 2592), (34, 2643), (39, 2703), (40, 2706), (41, 2709), (43, 2742), (49, 2835),

Gene: Amelia_5 Start: 2509, Stop: 2862, Start Num: 12

Candidate Starts for Amelia_5:

(Start: 12 @2509 has 26 MA's), (14, 2521), (16, 2527), (17, 2530), (20, 2539), (21, 2545), (22, 2548), (25, 2557), (27, 2563), (28, 2569), (36, 2671), (40, 2692), (42, 2719), (43, 2728), (46, 2752), (48, 2773), (50, 2824),

Gene: AmiCi24_3 Start: 1989, Stop: 2318, Start Num: 8

Candidate Starts for AmiCi24_3:

(2, 1854), (3, 1860), (4, 1902), (5, 1920), (Start: 8 @1989 has 10 MA's), (Start: 12 @2010 has 26 MA's), (13, 2016), (16, 2028), (21, 2046), (37, 2130), (40, 2148), (41, 2151), (43, 2184),

Gene: Amphitrite_3 Start: 2008, Stop: 2316, Start Num: 12

Candidate Starts for Amphitrite_3:

(2, 1852), (3, 1858), (4, 1900), (5, 1918), (Start: 8 @1987 has 10 MA's), (Start: 12 @2008 has 26 MA's), (13, 2014), (16, 2026), (21, 2044), (37, 2128), (40, 2146), (41, 2149), (43, 2182),

Gene: Andrew_4 Start: 2360, Stop: 2689, Start Num: 8

Candidate Starts for Andrew_4:

(Start: 8 @2360 has 10 MA's), (Start: 12 @2381 has 26 MA's), (13, 2387), (16, 2399), (21, 2417), (37, 2501), (38, 2504), (40, 2519), (41, 2522), (43, 2555), (47, 2582), (48, 2600), (49, 2648),

Gene: Antrice_4 Start: 2338, Stop: 2655, Start Num: 11

Candidate Starts for Antrice_4:

(Start: 11 @2338 has 4 MA's), (14, 2353), (16, 2359), (26, 2392), (33, 2416), (37, 2467), (40, 2485), (41, 2488), (43, 2521), (44, 2524), (47, 2548),

Gene: Atlantica_3 Start: 1989, Stop: 2318, Start Num: 8

Candidate Starts for Atlantica_3:

(2, 1854), (3, 1860), (4, 1902), (5, 1920), (Start: 8 @1989 has 10 MA's), (Start: 12 @2010 has 26 MA's), (13, 2016), (16, 2028), (21, 2046), (37, 2130), (40, 2148), (41, 2151), (43, 2184),

Gene: Babushka_3 Start: 1991, Stop: 2365, Start Num: 8

Candidate Starts for Babushka_3:

(Start: 8 @1991 has 10 MA's), (Start: 12 @2012 has 26 MA's), (14, 2024), (16, 2030), (17, 2033), (21, 2048), (22, 2051), (24, 2057), (37, 2177), (40, 2195), (41, 2198), (51, 2336),

Gene: Bedetta_5 Start: 2509, Stop: 2862, Start Num: 12

Candidate Starts for Bedetta_5:

(Start: 12 @2509 has 26 MA's), (14, 2521), (16, 2527), (17, 2530), (20, 2539), (21, 2545), (22, 2548), (25, 2557), (27, 2563), (28, 2569), (36, 2671), (40, 2692), (42, 2719), (43, 2728), (46, 2752), (48, 2773), (50, 2824),

Gene: Bible12_5 Start: 2509, Stop: 2862, Start Num: 12

Candidate Starts for Bible12_5:

(Start: 12 @2509 has 26 MA's), (14, 2521), (16, 2527), (17, 2530), (20, 2539), (21, 2545), (22, 2548), (25, 2557), (27, 2563), (28, 2569), (36, 2671), (40, 2692), (42, 2719), (43, 2728), (46, 2752), (49, 2821), (50, 2824),

Gene: Camara_3 Start: 2011, Stop: 2319, Start Num: 12

Candidate Starts for Camara_3:

(2, 1855), (3, 1861), (4, 1903), (5, 1921), (Start: 8 @1990 has 10 MA's), (Start: 12 @2011 has 26 MA's), (13, 2017), (16, 2029), (21, 2047), (37, 2131), (40, 2149), (41, 2152), (43, 2185),

Gene: Chicken_4 Start: 2347, Stop: 2667, Start Num: 12

Candidate Starts for Chicken_4:

(10, 2341), (Start: 12 @2347 has 26 MA's), (22, 2383), (36, 2476), (39, 2494), (40, 2497), (41, 2500), (43, 2533), (44, 2536), (49, 2626), (50, 2629),

Gene: Colusalem_4 Start: 2345, Stop: 2698, Start Num: 12

Candidate Starts for Colusalem_4:

(Start: 12 @2345 has 26 MA's), (14, 2357), (16, 2363), (17, 2366), (20, 2375), (21, 2381), (22, 2384), (25, 2393), (27, 2399), (28, 2405), (29, 2414), (36, 2507), (40, 2528), (42, 2555), (43, 2564), (46, 2588), (49, 2657), (50, 2660),

Gene: Coral_4 Start: 2345, Stop: 2698, Start Num: 12

Candidate Starts for Coral_4:

(Start: 12 @2345 has 26 MA's), (14, 2357), (16, 2363), (17, 2366), (20, 2375), (21, 2381), (22, 2384), (25, 2393), (27, 2399), (28, 2405), (29, 2414), (36, 2507), (40, 2528), (42, 2555), (43, 2564), (46, 2588),

(49, 2657), (50, 2660),

Gene: Cote_5 Start: 2509, Stop: 2862, Start Num: 12

Candidate Starts for Cote_5:

(Start: 12 @2509 has 26 MA's), (14, 2521), (16, 2527), (17, 2530), (20, 2539), (21, 2545), (22, 2548), (25, 2557), (27, 2563), (28, 2569), (36, 2671), (40, 2692), (42, 2719), (43, 2728), (46, 2752), (48, 2773), (50, 2824),

Gene: Cygnet_4 Start: 2338, Stop: 2658, Start Num: 11

Candidate Starts for Cygnet_4:

(Start: 11 @2338 has 4 MA's), (14, 2353), (16, 2359), (20, 2371), (26, 2392), (38, 2473), (39, 2485), (41, 2491), (42, 2515), (45, 2530), (47, 2551), (50, 2620),

Gene: Damocles_5 Start: 2509, Stop: 2862, Start Num: 12

Candidate Starts for Damocles_5:

(Start: 12 @2509 has 26 MA's), (14, 2521), (16, 2527), (17, 2530), (20, 2539), (21, 2545), (22, 2548), (25, 2557), (27, 2563), (28, 2569), (36, 2671), (40, 2692), (42, 2719), (43, 2728), (46, 2752), (48, 2773), (50, 2824),

Gene: DanHam62_3 Start: 1989, Stop: 2318, Start Num: 8

Candidate Starts for DanHam62_3:

(2, 1854), (3, 1860), (4, 1902), (5, 1920), (Start: 8 @1989 has 10 MA's), (Start: 12 @2010 has 26 MA's), (13, 2016), (16, 2028), (21, 2046), (37, 2130), (40, 2148), (41, 2151), (43, 2184),

Gene: Daob_5 Start: 2509, Stop: 2862, Start Num: 12

Candidate Starts for Daob_5:

(Start: 12 @2509 has 26 MA's), (14, 2521), (16, 2527), (17, 2530), (20, 2539), (21, 2545), (22, 2548), (25, 2557), (27, 2563), (28, 2569), (29, 2578), (36, 2671), (40, 2692), (42, 2719), (43, 2728), (46, 2752), (49, 2821), (50, 2824),

Gene: Eesa_4 Start: 2556, Stop: 2876, Start Num: 12

Candidate Starts for Eesa_4:

(10, 2550), (Start: 12 @2556 has 26 MA's), (22, 2592), (36, 2685), (39, 2703), (40, 2706), (43, 2742), (49, 2835), (50, 2838),

Gene: Fingolfin_3 Start: 1990, Stop: 2319, Start Num: 8

Candidate Starts for Fingolfin_3:

(2, 1855), (3, 1861), (4, 1903), (5, 1921), (Start: 8 @1990 has 10 MA's), (Start: 12 @2011 has 26 MA's), (13, 2017), (16, 2029), (21, 2047), (37, 2131), (40, 2149), (41, 2152), (43, 2185),

Gene: Galaxy_4 Start: 2358, Stop: 2684, Start Num: 12

Candidate Starts for Galaxy_4:

(6, 2292), (7, 2310), (Start: 12 @2358 has 26 MA's), (15, 2370), (41, 2517), (50, 2646),

Gene: Glotell_3 Start: 1989, Stop: 2318, Start Num: 8

Candidate Starts for Glotell_3:

(2, 1854), (3, 1860), (4, 1902), (5, 1920), (Start: 8 @1989 has 10 MA's), (Start: 12 @2010 has 26 MA's), (13, 2016), (16, 2028), (21, 2046), (37, 2130), (40, 2148), (41, 2151), (43, 2184),

Gene: GramZayde_4 Start: 2346, Stop: 2699, Start Num: 12

Candidate Starts for GramZayde_4:

(Start: 12 @2346 has 26 MA's), (14, 2358), (16, 2364), (17, 2367), (20, 2376), (21, 2382), (22, 2385), (25, 2394), (27, 2400), (28, 2406), (36, 2508), (40, 2529), (42, 2556), (43, 2565), (46, 2589), (49, 2658),

(50, 2661),

Gene: Gravel_5 Start: 2556, Stop: 2876, Start Num: 12

Candidate Starts for Gravel_5:

(10, 2550), (Start: 12 @2556 has 26 MA's), (22, 2592), (34, 2643), (39, 2703), (40, 2706), (41, 2709), (43, 2742), (49, 2835),

Gene: HamCheese_3 Start: 2010, Stop: 2318, Start Num: 12

Candidate Starts for HamCheese_3:

(2, 1854), (3, 1860), (4, 1902), (5, 1920), (Start: 8 @1989 has 10 MA's), (Start: 12 @2010 has 26 MA's), (13, 2016), (16, 2028), (21, 2046), (37, 2130), (40, 2148), (41, 2151), (43, 2184),

Gene: HannahPhantana_5 Start: 2509, Stop: 2862, Start Num: 12

Candidate Starts for HannahPhantana_5:

(Start: 12 @2509 has 26 MA's), (14, 2521), (16, 2527), (17, 2530), (20, 2539), (21, 2545), (22, 2548), (25, 2557), (27, 2563), (28, 2569), (36, 2671), (40, 2692), (42, 2719), (43, 2728), (46, 2752), (49, 2821), (50, 2824),

Gene: Jerole_5 Start: 2509, Stop: 2862, Start Num: 12

Candidate Starts for Jerole_5:

(Start: 12 @2509 has 26 MA's), (14, 2521), (16, 2527), (17, 2530), (20, 2539), (21, 2545), (22, 2548), (25, 2557), (27, 2563), (28, 2569), (36, 2671), (40, 2692), (42, 2719), (43, 2728), (46, 2752), (48, 2773), (50, 2824),

Gene: Juno112_3 Start: 1989, Stop: 2318, Start Num: 8

Candidate Starts for Juno112_3:

(2, 1854), (3, 1860), (4, 1902), (5, 1920), (Start: 8 @1989 has 10 MA's), (Start: 12 @2010 has 26 MA's), (13, 2016), (16, 2028), (21, 2046), (37, 2130), (40, 2148), (41, 2151), (43, 2184),

Gene: KHumphrey_3 Start: 2010, Stop: 2318, Start Num: 12

Candidate Starts for KHumphrey_3:

(2, 1854), (3, 1860), (4, 1902), (5, 1920), (Start: 8 @1989 has 10 MA's), (Start: 12 @2010 has 26 MA's), (13, 2016), (16, 2028), (21, 2046), (37, 2130), (40, 2148), (41, 2151), (43, 2184),

Gene: KendraB23_5 Start: 2556, Stop: 2876, Start Num: 12

Candidate Starts for KendraB23_5:

(10, 2550), (Start: 12 @2556 has 26 MA's), (22, 2592), (34, 2643), (39, 2703), (40, 2706), (41, 2709), (43, 2742), (49, 2835),

Gene: Kepler_4 Start: 2344, Stop: 2697, Start Num: 12

Candidate Starts for Kepler_4:

(Start: 12 @2344 has 26 MA's), (14, 2356), (16, 2362), (17, 2365), (20, 2374), (21, 2380), (22, 2383), (25, 2392), (27, 2398), (28, 2404), (29, 2413), (36, 2506), (40, 2527), (42, 2554), (43, 2563), (46, 2587), (49, 2656), (50, 2659),

Gene: Kuleana_4 Start: 2342, Stop: 2671, Start Num: 9

Candidate Starts for Kuleana_4:

(Start: 9 @2342 has 1 MA's), (Start: 12 @2357 has 26 MA's), (14, 2366), (18, 2378), (21, 2390), (40, 2501), (46, 2561), (48, 2582), (50, 2633),

Gene: Laphuphu24k_3 Start: 2010, Stop: 2318, Start Num: 12

Candidate Starts for Laphuphu24k_3:

(2, 1854), (3, 1860), (4, 1902), (5, 1920), (Start: 8 @1989 has 10 MA's), (Start: 12 @2010 has 26 MA's), (13, 2016), (16, 2028), (21, 2046), (37, 2130), (40, 2148), (41, 2151), (43, 2184),

Gene: LittleTokyo_4 Start: 2335, Stop: 2649, Start Num: 11

Candidate Starts for LittleTokyo_4:

(Start: 11 @2335 has 4 MA's), (14, 2350), (16, 2356), (20, 2368), (26, 2389), (33, 2413), (37, 2461), (39, 2476), (40, 2479), (41, 2482), (43, 2515), (44, 2518), (47, 2542),

Gene: Lunar_5 Start: 2509, Stop: 2862, Start Num: 12

Candidate Starts for Lunar_5:

(Start: 12 @2509 has 26 MA's), (14, 2521), (16, 2527), (17, 2530), (20, 2539), (21, 2545), (22, 2548), (25, 2557), (27, 2563), (28, 2569), (36, 2671), (40, 2692), (42, 2719), (43, 2728), (46, 2752), (48, 2773), (50, 2824),

Gene: Melons_5 Start: 2509, Stop: 2862, Start Num: 12

Candidate Starts for Melons_5:

(Start: 12 @2509 has 26 MA's), (14, 2521), (16, 2527), (17, 2530), (20, 2539), (21, 2545), (22, 2548), (25, 2557), (27, 2563), (28, 2569), (36, 2671), (40, 2692), (42, 2719), (43, 2728), (46, 2752), (48, 2773), (50, 2824),

Gene: Niblet_4 Start: 2347, Stop: 2667, Start Num: 12

Candidate Starts for Niblet_4:

(10, 2341), (Start: 12 @2347 has 26 MA's), (22, 2383), (36, 2476), (39, 2494), (40, 2497), (41, 2500), (43, 2533), (44, 2536), (49, 2626), (50, 2629),

Gene: Oppalora_3 Start: 2010, Stop: 2318, Start Num: 12

Candidate Starts for Oppalora_3:

(2, 1854), (3, 1860), (4, 1902), (5, 1920), (Start: 8 @1989 has 10 MA's), (Start: 12 @2010 has 26 MA's), (13, 2016), (16, 2028), (21, 2046), (37, 2130), (40, 2148), (41, 2151), (43, 2184),

Gene: Orcanus_4 Start: 2349, Stop: 2669, Start Num: 12

Candidate Starts for Orcanus_4:

(10, 2343), (Start: 12 @2349 has 26 MA's), (22, 2385), (35, 2442), (36, 2478), (37, 2481), (39, 2496), (40, 2499), (41, 2502), (43, 2535), (46, 2559), (49, 2628),

Gene: OtsoOtso_4 Start: 2345, Stop: 2698, Start Num: 12

Candidate Starts for OtsoOtso_4:

(Start: 12 @2345 has 26 MA's), (14, 2357), (16, 2363), (17, 2366), (20, 2375), (21, 2381), (22, 2384), (25, 2393), (27, 2399), (28, 2405), (29, 2414), (36, 2507), (40, 2528), (42, 2555), (43, 2564), (46, 2588), (49, 2657), (50, 2660),

Gene: Pelletreau_5 Start: 2556, Stop: 2876, Start Num: 12

Candidate Starts for Pelletreau_5:

(10, 2550), (Start: 12 @2556 has 26 MA's), (22, 2592), (34, 2643), (39, 2703), (40, 2706), (41, 2709), (43, 2742), (49, 2835),

Gene: PhirstandPhine_5 Start: 2509, Stop: 2862, Start Num: 12

Candidate Starts for PhirstandPhine_5:

(Start: 12 @2509 has 26 MA's), (14, 2521), (16, 2527), (17, 2530), (20, 2539), (21, 2545), (22, 2548), (25, 2557), (27, 2563), (28, 2569), (36, 2671), (40, 2692), (42, 2719), (43, 2728), (46, 2752), (48, 2773), (50, 2824),

Gene: PhluffyCoco_3 Start: 1989, Stop: 2318, Start Num: 8

Candidate Starts for PhluffyCoco_3:

(2, 1854), (3, 1860), (4, 1902), (5, 1920), (Start: 8 @1989 has 10 MA's), (Start: 12 @2010 has 26 MA's), (13, 2016), (16, 2028), (21, 2046), (37, 2130), (40, 2148), (41, 2151), (43, 2184),

Gene: Pineda_5 Start: 2509, Stop: 2862, Start Num: 12

Candidate Starts for Pineda_5:

(Start: 12 @2509 has 26 MA's), (14, 2521), (16, 2527), (17, 2530), (20, 2539), (21, 2545), (22, 2548), (25, 2557), (27, 2563), (28, 2569), (36, 2671), (40, 2692), (42, 2719), (43, 2728), (46, 2752), (48, 2773), (50, 2824),

Gene: Polka_4 Start: 2345, Stop: 2698, Start Num: 12

Candidate Starts for Polka_4:

(Start: 12 @2345 has 26 MA's), (14, 2357), (16, 2363), (17, 2366), (20, 2375), (21, 2381), (22, 2384), (25, 2393), (27, 2399), (28, 2405), (29, 2414), (36, 2507), (40, 2528), (42, 2555), (43, 2564), (46, 2588), (49, 2657), (50, 2660),

Gene: RedFox_3 Start: 1989, Stop: 2318, Start Num: 8

Candidate Starts for RedFox_3:

(2, 1854), (3, 1860), (4, 1902), (5, 1920), (Start: 8 @1989 has 10 MA's), (Start: 12 @2010 has 26 MA's), (13, 2016), (16, 2028), (21, 2046), (37, 2130), (40, 2148), (41, 2151), (43, 2184),

Gene: Shen_5 Start: 2556, Stop: 2876, Start Num: 12

Candidate Starts for Shen_5:

(10, 2550), (Start: 12 @2556 has 26 MA's), (22, 2592), (34, 2643), (39, 2703), (40, 2706), (41, 2709), (43, 2742), (49, 2835),

Gene: StuartMinion_3 Start: 2011, Stop: 2325, Start Num: 12

Candidate Starts for StuartMinion_3:

(10, 2005), (Start: 12 @2011 has 26 MA's), (13, 2014), (21, 2044), (32, 2080), (37, 2137), (40, 2155), (41, 2158), (43, 2191),

Gene: TaylorSipht_4 Start: 2373, Stop: 2693, Start Num: 12

Candidate Starts for TaylorSipht_4:

(2, 2217), (3, 2223), (5, 2283), (Start: 12 @2373 has 26 MA's), (14, 2382), (17, 2391), (19, 2397), (25, 2418), (27, 2424), (29, 2436), (38, 2508), (41, 2526), (43, 2559), (49, 2652), (50, 2655),

Gene: Toad24_5 Start: 2556, Stop: 2876, Start Num: 12

Candidate Starts for Toad24_5:

(10, 2550), (Start: 12 @2556 has 26 MA's), (22, 2592), (34, 2643), (39, 2703), (40, 2706), (41, 2709), (43, 2742), (49, 2835),

Gene: Westrich_5 Start: 2556, Stop: 2876, Start Num: 12

Candidate Starts for Westrich_5:

(10, 2550), (Start: 12 @2556 has 26 MA's), (35, 2649), (36, 2685), (39, 2703), (40, 2706), (41, 2709), (43, 2742), (49, 2835),

Gene: Zhuangyuan_5 Start: 2685, Stop: 3011, Start Num: 11

Candidate Starts for Zhuangyuan_5:

(Start: 11 @2685 has 4 MA's), (14, 2700), (16, 2706), (23, 2730), (26, 2739), (30, 2754), (31, 2757), (38, 2826), (40, 2841), (41, 2844), (43, 2877), (44, 2880), (47, 2904),

Gene: Zixiang_4 Start: 2347, Stop: 2667, Start Num: 12

Candidate Starts for Zixiang_4:

(10, 2341), (Start: 12 @2347 has 26 MA's), (22, 2383), (36, 2476), (39, 2494), (40, 2497), (41, 2500),
(43, 2533), (44, 2536), (49, 2626), (50, 2629),