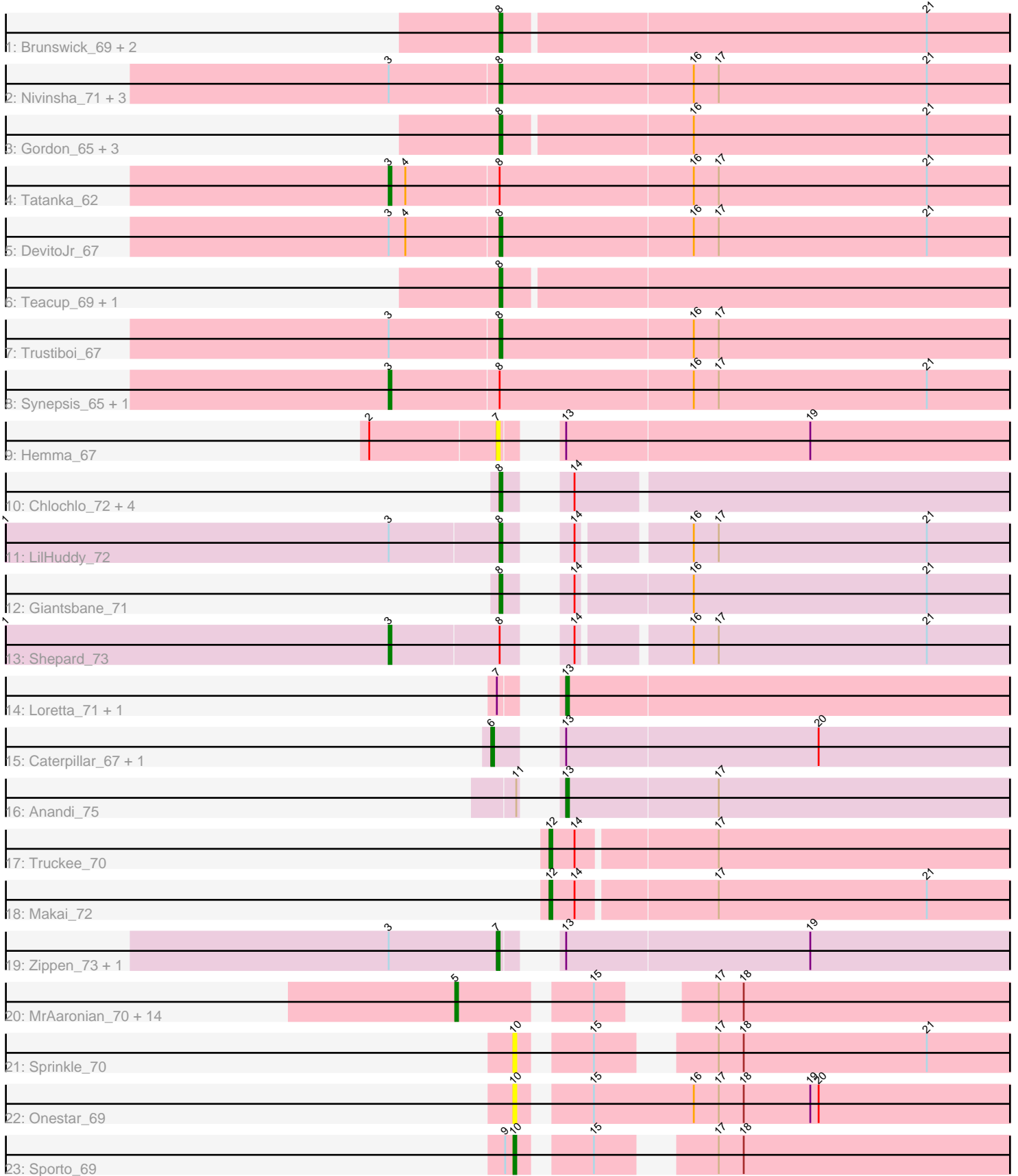


Pham 305065



Note: Tracks are now grouped by subcluster and scaled. Switching in subcluster is indicated by changes in track color. Track scale is now set by default to display the region 30 bp upstream of start 1 to 30 bp downstream of the last possible start. If this default region is judged to be packed too tightly with annotated starts, the track will be further scaled to only show that region of the ORF with annotated starts. This action will be indicated by adding "Zoomed" to the title. For starts, yellow indicates the location of called starts comprised solely of Glimmer/GeneMark auto-annotations, green indicates the location of called starts with at least 1 manual gene annotation.

Pham 305065 Report

This analysis was run 06/08/26 on database version 649.

Pham number 305065 has 54 members, 5 are drafts.

Phages represented in each track:

- Track 1 : Brunswick_69, Niktson_68, ElephantMan_68
- Track 2 : Nivinsha_71, AreFloNak_72, Nightmare_69, CastorTray_71
- Track 3 : Gordon_65, Tenno_68, CapnMurica_65, MiniBagel_67
- Track 4 : Tatanka_62
- Track 5 : DevitoJr_67
- Track 6 : Teacup_69, LucySwiss_68
- Track 7 : Trustiboi_67
- Track 8 : Synopsis_65, ScienceWizSam_69
- Track 9 : Hemma_67
- Track 10 : Chlochlo_72, Tipton_73, Bouchard_72, Phaby_73, Tokki_77
- Track 11 : LilHuddy_72
- Track 12 : Giantsbane_71
- Track 13 : Shepard_73
- Track 14 : Loretta_71, Ingrid_74
- Track 15 : Caterpillar_67, MediumFry_68
- Track 16 : Anandi_75
- Track 17 : Truckee_70
- Track 18 : Makai_72
- Track 19 : Zippen_73, Inked_73
- Track 20 : MrAaronian_70, Sloopyjoe_70, Boog_69, Jeremy4pt0_69, Shiba_69, Salk_70, Stayer_70, BronxBay_70, Egad_70, StarLord_70, Djungelskog_69, ProfFrink_70, Michelle_70, Linda_70, DoctorPepper_69
- Track 21 : Sprinkle_70
- Track 22 : Onestar_69
- Track 23 : Sporto_69

Summary of Final Annotations (See graph section above for start numbers):

The start number called the most often in the published annotations is 8, it was called in 20 of the 49 non-draft genes in the pham.

Genes that call this "Most Annotated" start:

- AreFloNak_72, Bouchard_72, Brunswick_69, CapnMurica_65, CastorTray_71, Chlochlo_72, DevitoJr_67, ElephantMan_68, Giantsbane_71, Gordon_65,

LilHuddy_72, LucySwiss_68, MiniBagel_67, Nightmare_69, Niktson_68, Nivinsha_71, Phaby_73, Teacup_69, Tenno_68, Tipton_73, Tokki_77, Trustiboi_67,

Genes that have the "Most Annotated" start but do not call it:

- ScienceWizSam_69, Shepard_73, Synepsis_65, Tatanka_62,

Genes that do not have the "Most Annotated" start:

- Anandi_75, Boog_69, BronxBay_70, Caterpillar_67, Djungelskog_69, DoctorPepper_69, Egad_70, Hemma_67, Ingrid_74, Inked_73, Jeremy4pt0_69, Linda_70, Loretta_71, Makai_72, MediumFry_68, Michelle_70, MrAaronian_70, Onestar_69, ProfFrink_70, Salk_70, Shiba_69, Sloopyjoe_70, Sporto_69, Sprinkle_70, StarLord_70, Stayer_70, Truckee_70, Zippen_73,

Summary by start number:

Start 3:

- Found in 13 of 54 (24.1%) of genes in pham
- Manual Annotations of this start: 4 of 49
- Called 30.8% of time when present
- Phage (with cluster) where this start called: ScienceWizSam_69 (AU1), Shepard_73 (AU2), Synepsis_65 (AU1), Tatanka_62 (AU1),

Start 5:

- Found in 15 of 54 (27.8%) of genes in pham
- Manual Annotations of this start: 15 of 49
- Called 100.0% of time when present
- Phage (with cluster) where this start called: Boog_69 (AW), BronxBay_70 (AW), Djungelskog_69 (AW), DoctorPepper_69 (AW), Egad_70 (AW), Jeremy4pt0_69 (AW), Linda_70 (AW), Michelle_70 (AW), MrAaronian_70 (AW), ProfFrink_70 (AW), Salk_70 (AW), Shiba_69 (AW), Sloopyjoe_70 (AW), StarLord_70 (AW), Stayer_70 (AW),

Start 6:

- Found in 2 of 54 (3.7%) of genes in pham
- Manual Annotations of this start: 2 of 49
- Called 100.0% of time when present
- Phage (with cluster) where this start called: Caterpillar_67 (AU4), MediumFry_68 (AU4),

Start 7:

- Found in 5 of 54 (9.3%) of genes in pham
- Manual Annotations of this start: 2 of 49
- Called 60.0% of time when present
- Phage (with cluster) where this start called: Hemma_67 (AU1), Inked_73 (AU7), Zippen_73 (AU7),

Start 8:

- Found in 26 of 54 (48.1%) of genes in pham
- Manual Annotations of this start: 20 of 49
- Called 84.6% of time when present
- Phage (with cluster) where this start called: AreFloNak_72 (AU1), Bouchard_72 (AU2), Brunswick_69 (AU1), CapnMurica_65 (AU1), CastorTray_71 (AU1), Chlochlo_72 (AU2), DevitoJr_67 (AU1), ElephantMan_68 (AU1), Giantsbane_71 (AU2), Gordon_65 (AU1), LilHuddy_72 (AU2), LucySwiss_68 (AU1), MiniBagel_67

(AU1), Nightmare_69 (AU1), Niktson_68 (AU1), Nivinsha_71 (AU1), Phaby_73 (AU2), Teacup_69 (AU1), Tenno_68 (AU1), Tipton_73 (AU2), Tokki_77 (AU2), Trustiboi_67 (AU1),

Start 10:

- Found in 3 of 54 (5.6%) of genes in pham
- Manual Annotations of this start: 1 of 49
- Called 100.0% of time when present
- Phage (with cluster) where this start called: Onestar_69 (AW), Sporto_69 (AW), Sprinkle_70 (AW),

Start 12:

- Found in 2 of 54 (3.7%) of genes in pham
- Manual Annotations of this start: 2 of 49
- Called 100.0% of time when present
- Phage (with cluster) where this start called: Makai_72 (AU5), Truckee_70 (AU5),

Start 13:

- Found in 8 of 54 (14.8%) of genes in pham
- Manual Annotations of this start: 3 of 49
- Called 37.5% of time when present
- Phage (with cluster) where this start called: Anandi_75 (AU4), Ingrid_74 (AU3), Loretta_71 (AU3),

Summary by clusters:

There are 7 clusters represented in this pham: AW, AU1, AU3, AU2, AU5, AU4, AU7,

Info for manual annotations of cluster AU1:

- Start number 3 was manually annotated 3 times for cluster AU1.
- Start number 8 was manually annotated 13 times for cluster AU1.

Info for manual annotations of cluster AU2:

- Start number 3 was manually annotated 1 time for cluster AU2.
- Start number 8 was manually annotated 7 times for cluster AU2.

Info for manual annotations of cluster AU3:

- Start number 13 was manually annotated 2 times for cluster AU3.

Info for manual annotations of cluster AU4:

- Start number 6 was manually annotated 2 times for cluster AU4.
- Start number 13 was manually annotated 1 time for cluster AU4.

Info for manual annotations of cluster AU5:

- Start number 12 was manually annotated 2 times for cluster AU5.

Info for manual annotations of cluster AU7:

- Start number 7 was manually annotated 2 times for cluster AU7.

Info for manual annotations of cluster AW:

- Start number 5 was manually annotated 15 times for cluster AW.
- Start number 10 was manually annotated 1 time for cluster AW.

Gene Information:

Gene: Anandi_75 Start: 47127, Stop: 47306, Start Num: 13

Candidate Starts for Anandi_75:

(11, 47124), (Start: 13 @47127 has 3 MA's), (17, 47181),

Gene: AreFloNak_72 Start: 46382, Stop: 46585, Start Num: 8

Candidate Starts for AreFloNak_72:

(Start: 3 @46343 has 4 MA's), (Start: 8 @46382 has 20 MA's), (16, 46451), (17, 46460), (21, 46535),

Gene: Boog_69 Start: 44324, Stop: 44518, Start Num: 5

Candidate Starts for Boog_69:

(Start: 5 @44324 has 15 MA's), (15, 44366), (17, 44390), (18, 44399),

Gene: Bouchard_72 Start: 46989, Stop: 47174, Start Num: 8

Candidate Starts for Bouchard_72:

(Start: 8 @46989 has 20 MA's), (14, 47001),

Gene: BronxBay_70 Start: 44596, Stop: 44790, Start Num: 5

Candidate Starts for BronxBay_70:

(Start: 5 @44596 has 15 MA's), (15, 44638), (17, 44662), (18, 44671),

Gene: Brunswick_69 Start: 46217, Stop: 46417, Start Num: 8

Candidate Starts for Brunswick_69:

(Start: 8 @46217 has 20 MA's), (21, 46367),

Gene: CapnMurica_65 Start: 46955, Stop: 47140, Start Num: 8

Candidate Starts for CapnMurica_65:

(Start: 8 @46955 has 20 MA's), (16, 47006), (21, 47090),

Gene: CastorTray_71 Start: 46964, Stop: 47170, Start Num: 8

Candidate Starts for CastorTray_71:

(Start: 3 @46925 has 4 MA's), (Start: 8 @46964 has 20 MA's), (16, 47033), (17, 47042), (21, 47117),

Gene: Caterpillar_67 Start: 45815, Stop: 46006, Start Num: 6

Candidate Starts for Caterpillar_67:

(Start: 6 @45815 has 2 MA's), (Start: 13 @45827 has 3 MA's), (20, 45917),

Gene: Chlochlo_72 Start: 46516, Stop: 46701, Start Num: 8

Candidate Starts for Chlochlo_72:

(Start: 8 @46516 has 20 MA's), (14, 46528),

Gene: DevitoJr_67 Start: 46345, Stop: 46548, Start Num: 8

Candidate Starts for DevitoJr_67:

(Start: 3 @46306 has 4 MA's), (4, 46312), (Start: 8 @46345 has 20 MA's), (16, 46414), (17, 46423), (21, 46498),

Gene: Djungelskog_69 Start: 44598, Stop: 44792, Start Num: 5

Candidate Starts for Djungelskog_69:

(Start: 5 @44598 has 15 MA's), (15, 44640), (17, 44664), (18, 44673),

Gene: DoctorPepper_69 Start: 44300, Stop: 44494, Start Num: 5
Candidate Starts for DoctorPepper_69:
(Start: 5 @44300 has 15 MA's), (15, 44342), (17, 44366), (18, 44375),

Gene: Egad_70 Start: 44574, Stop: 44768, Start Num: 5
Candidate Starts for Egad_70:
(Start: 5 @44574 has 15 MA's), (15, 44616), (17, 44640), (18, 44649),

Gene: ElephantMan_68 Start: 46847, Stop: 47047, Start Num: 8
Candidate Starts for ElephantMan_68:
(Start: 8 @46847 has 20 MA's), (21, 46997),

Gene: Giantsbane_71 Start: 45514, Stop: 45702, Start Num: 8
Candidate Starts for Giantsbane_71:
(Start: 8 @45514 has 20 MA's), (14, 45526), (16, 45565), (21, 45649),

Gene: Gordon_65 Start: 46838, Stop: 47038, Start Num: 8
Candidate Starts for Gordon_65:
(Start: 8 @46838 has 20 MA's), (16, 46904), (21, 46988),

Gene: Hemma_67 Start: 44264, Stop: 44455, Start Num: 7
Candidate Starts for Hemma_67:
(2, 44219), (Start: 7 @44264 has 2 MA's), (Start: 13 @44273 has 3 MA's), (19, 44360),

Gene: Ingrid_74 Start: 46820, Stop: 46999, Start Num: 13
Candidate Starts for Ingrid_74:
(Start: 7 @46811 has 2 MA's), (Start: 13 @46820 has 3 MA's),

Gene: Inked_73 Start: 47436, Stop: 47624, Start Num: 7
Candidate Starts for Inked_73:
(Start: 3 @47397 has 4 MA's), (Start: 7 @47436 has 2 MA's), (Start: 13 @47445 has 3 MA's), (19, 47532),

Gene: Jeremy4pt0_69 Start: 44295, Stop: 44489, Start Num: 5
Candidate Starts for Jeremy4pt0_69:
(Start: 5 @44295 has 15 MA's), (15, 44337), (17, 44361), (18, 44370),

Gene: LilHuddy_72 Start: 46642, Stop: 46827, Start Num: 8
Candidate Starts for LilHuddy_72:
(1, 46465), (Start: 3 @46603 has 4 MA's), (Start: 8 @46642 has 20 MA's), (14, 46654), (16, 46690), (17, 46699), (21, 46774),

Gene: Linda_70 Start: 44593, Stop: 44787, Start Num: 5
Candidate Starts for Linda_70:
(Start: 5 @44593 has 15 MA's), (15, 44635), (17, 44659), (18, 44668),

Gene: Loretta_71 Start: 46820, Stop: 46999, Start Num: 13
Candidate Starts for Loretta_71:
(Start: 7 @46811 has 2 MA's), (Start: 13 @46820 has 3 MA's),

Gene: LucySwiss_68 Start: 45956, Stop: 46156, Start Num: 8
Candidate Starts for LucySwiss_68:
(Start: 8 @45956 has 20 MA's),

Gene: Makai_72 Start: 46941, Stop: 47126, Start Num: 12

Candidate Starts for Makai_72:

(Start: 12 @46941 has 2 MA's), (14, 46950), (17, 46998), (21, 47073),

Gene: MediumFry_68 Start: 46153, Stop: 46344, Start Num: 6

Candidate Starts for MediumFry_68:

(Start: 6 @46153 has 2 MA's), (Start: 13 @46165 has 3 MA's), (20, 46255),

Gene: Michelle_70 Start: 44595, Stop: 44789, Start Num: 5

Candidate Starts for Michelle_70:

(Start: 5 @44595 has 15 MA's), (15, 44637), (17, 44661), (18, 44670),

Gene: MiniBagel_67 Start: 46944, Stop: 47144, Start Num: 8

Candidate Starts for MiniBagel_67:

(Start: 8 @46944 has 20 MA's), (16, 47010), (21, 47094),

Gene: MrAaronian_70 Start: 44595, Stop: 44789, Start Num: 5

Candidate Starts for MrAaronian_70:

(Start: 5 @44595 has 15 MA's), (15, 44637), (17, 44661), (18, 44670),

Gene: Nightmare_69 Start: 47250, Stop: 47453, Start Num: 8

Candidate Starts for Nightmare_69:

(Start: 3 @47211 has 4 MA's), (Start: 8 @47250 has 20 MA's), (16, 47319), (17, 47328), (21, 47403),

Gene: Niktson_68 Start: 46847, Stop: 47047, Start Num: 8

Candidate Starts for Niktson_68:

(Start: 8 @46847 has 20 MA's), (21, 46997),

Gene: Nivinsha_71 Start: 46382, Stop: 46585, Start Num: 8

Candidate Starts for Nivinsha_71:

(Start: 3 @46343 has 4 MA's), (Start: 8 @46382 has 20 MA's), (16, 46451), (17, 46460), (21, 46535),

Gene: Onestar_69 Start: 44736, Stop: 44930, Start Num: 10

Candidate Starts for Onestar_69:

(Start: 10 @44736 has 1 MA's), (15, 44757), (16, 44793), (17, 44802), (18, 44811), (19, 44835), (20, 44838),

Gene: Phaby_73 Start: 47173, Stop: 47358, Start Num: 8

Candidate Starts for Phaby_73:

(Start: 8 @47173 has 20 MA's), (14, 47185),

Gene: ProfFrink_70 Start: 44573, Stop: 44767, Start Num: 5

Candidate Starts for ProfFrink_70:

(Start: 5 @44573 has 15 MA's), (15, 44615), (17, 44639), (18, 44648),

Gene: Salk_70 Start: 44593, Stop: 44787, Start Num: 5

Candidate Starts for Salk_70:

(Start: 5 @44593 has 15 MA's), (15, 44635), (17, 44659), (18, 44668),

Gene: ScienceWizSam_69 Start: 46505, Stop: 46750, Start Num: 3

Candidate Starts for ScienceWizSam_69:

(Start: 3 @46505 has 4 MA's), (Start: 8 @46544 has 20 MA's), (16, 46613), (17, 46622), (21, 46697),

Gene: Shepard_73 Start: 46456, Stop: 46680, Start Num: 3

Candidate Starts for Shepard_73:

(1, 46318), (Start: 3 @46456 has 4 MA's), (Start: 8 @46495 has 20 MA's), (14, 46507), (16, 46543), (17, 46552), (21, 46627),

Gene: Shiba_69 Start: 44251, Stop: 44445, Start Num: 5

Candidate Starts for Shiba_69:

(Start: 5 @44251 has 15 MA's), (15, 44293), (17, 44317), (18, 44326),

Gene: Sloopyjoe_70 Start: 44597, Stop: 44791, Start Num: 5

Candidate Starts for Sloopyjoe_70:

(Start: 5 @44597 has 15 MA's), (15, 44639), (17, 44663), (18, 44672),

Gene: Sporto_69 Start: 45691, Stop: 45870, Start Num: 10

Candidate Starts for Sporto_69:

(9, 45688), (Start: 10 @45691 has 1 MA's), (15, 45712), (17, 45742), (18, 45751),

Gene: Sprinkle_70 Start: 45048, Stop: 45230, Start Num: 10

Candidate Starts for Sprinkle_70:

(Start: 10 @45048 has 1 MA's), (15, 45069), (17, 45099), (18, 45108), (21, 45174),

Gene: StarLord_70 Start: 44590, Stop: 44784, Start Num: 5

Candidate Starts for StarLord_70:

(Start: 5 @44590 has 15 MA's), (15, 44632), (17, 44656), (18, 44665),

Gene: Stayer_70 Start: 44593, Stop: 44787, Start Num: 5

Candidate Starts for Stayer_70:

(Start: 5 @44593 has 15 MA's), (15, 44635), (17, 44659), (18, 44668),

Gene: Synopsis_65 Start: 46273, Stop: 46515, Start Num: 3

Candidate Starts for Synopsis_65:

(Start: 3 @46273 has 4 MA's), (Start: 8 @46312 has 20 MA's), (16, 46381), (17, 46390), (21, 46465),

Gene: Tatanka_62 Start: 46412, Stop: 46657, Start Num: 3

Candidate Starts for Tatanka_62:

(Start: 3 @46412 has 4 MA's), (4, 46418), (Start: 8 @46451 has 20 MA's), (16, 46520), (17, 46529), (21, 46604),

Gene: Teacup_69 Start: 46890, Stop: 47090, Start Num: 8

Candidate Starts for Teacup_69:

(Start: 8 @46890 has 20 MA's),

Gene: Tenno_68 Start: 46992, Stop: 47177, Start Num: 8

Candidate Starts for Tenno_68:

(Start: 8 @46992 has 20 MA's), (16, 47043), (21, 47127),

Gene: Tipton_73 Start: 47010, Stop: 47195, Start Num: 8

Candidate Starts for Tipton_73:

(Start: 8 @47010 has 20 MA's), (14, 47022),

Gene: Tokki_77 Start: 47041, Stop: 47226, Start Num: 8

Candidate Starts for Tokki_77:

(Start: 8 @47041 has 20 MA's), (14, 47053),

Gene: Truckee_70 Start: 46719, Stop: 46904, Start Num: 12

Candidate Starts for Truckee_70:

(Start: 12 @46719 has 2 MA's), (14, 46728), (17, 46776),

Gene: Trustiboi_67 Start: 46567, Stop: 46773, Start Num: 8

Candidate Starts for Trustiboi_67:

(Start: 3 @46528 has 4 MA's), (Start: 8 @46567 has 20 MA's), (16, 46636), (17, 46645),

Gene: Zippen_73 Start: 47301, Stop: 47489, Start Num: 7

Candidate Starts for Zippen_73:

(Start: 3 @47262 has 4 MA's), (Start: 7 @47301 has 2 MA's), (Start: 13 @47310 has 3 MA's), (19, 47397),