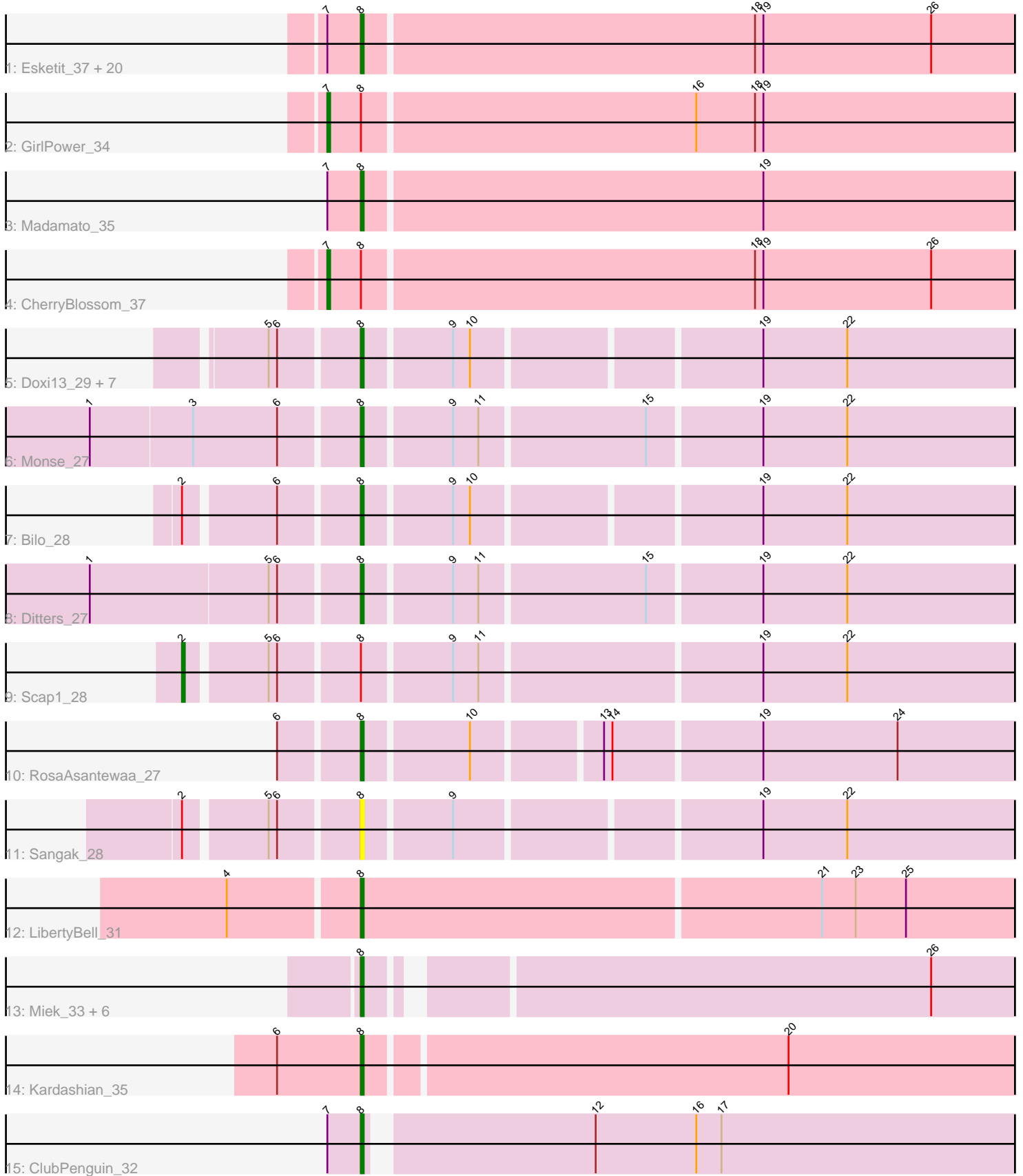


Pham 305096



Note: Tracks are now grouped by subcluster and scaled. Switching in subcluster is indicated by changes in track color. Track scale is now set by default to display the region 30 bp upstream of start 1 to 30 bp downstream of the last possible start. If this default region is judged to be packed too tightly with annotated starts, the track will be further scaled to only show that region of the ORF with annotated starts. This action will be indicated by adding "Zoomed" to the title. For starts, yellow indicates the location of called starts comprised solely of Glimmer/GeneMark auto-annotations, green indicates the location of called starts with at least 1 manual gene annotation.

Pham 305096 Report

This analysis was run 06/08/26 on database version 649.

Pham number 305096 has 48 members, 3 are drafts.

Phages represented in each track:

- Track 1 : Esketit_37, TonyStarch_36, Spectropatronm_37, Indigenous_37, Soshi_36, Maya_37, Jaylociraptor_37, Meibysrarus_36, OlympicHelado_37, DrGrey_36, Rima_37, Espio_37, Namu_37, FrodoSwaggins_37, IceWarrior_36, TieDye_36, Hoshi_37, HazuAndZazu_36, FidgetOrca_37, TaidaOne_37, Popy_37
- Track 2 : GirlPower_34
- Track 3 : Madamato_35
- Track 4 : CherryBlossom_37
- Track 5 : Doxi13_29, Annihilus_29, GoblinVoyage_29, HotFries_27, RavenPuff_28, SheRa_28, PherryCruz_28, Moozy_29
- Track 6 : Monse_27
- Track 7 : Bilo_28
- Track 8 : Ditters_27
- Track 9 : Scap1_28
- Track 10 : RosaAsantewaa_27
- Track 11 : Sangak_28
- Track 12 : LibertyBell_31
- Track 13 : Miek_33, FromIndy_34, CricKo_34, SendItCS_32, Regigigas_35, Rainydai_34, Thiqqums_34
- Track 14 : Kardashian_35
- Track 15 : ClubPenguin_32

Summary of Final Annotations (See graph section above for start numbers):

The start number called the most often in the published annotations is 8, it was called in 42 of the 45 non-draft genes in the pham.

Genes that call this "Most Annotated" start:

- Annihilus_29, Bilo_28, ClubPenguin_32, CricKo_34, Ditters_27, Doxi13_29, DrGrey_36, Esketit_37, Espio_37, FidgetOrca_37, FrodoSwaggins_37, FromIndy_34, GoblinVoyage_29, HazuAndZazu_36, Hoshi_37, HotFries_27, IceWarrior_36, Indigenous_37, Jaylociraptor_37, Kardashian_35, LibertyBell_31, Madamato_35, Maya_37, Meibysrarus_36, Miek_33, Monse_27, Moozy_29, Namu_37, OlympicHelado_37, PherryCruz_28, Popy_37, Rainydai_34, RavenPuff_28, Regigigas_35, Rima_37, RosaAsantewaa_27, Sangak_28, SendItCS_32, SheRa_28,

Soshi_36, Spectropatronm_37, TaidaOne_37, Thiqqums_34, TieDye_36, TonyStarch_36,

Genes that have the "Most Annotated" start but do not call it:

- CherryBlossom_37, GirlPower_34, Scap1_28,

Genes that do not have the "Most Annotated" start:

-

Summary by start number:

Start 2:

- Found in 3 of 48 (6.2%) of genes in pham
- Manual Annotations of this start: 1 of 45
- Called 33.3% of time when present
- Phage (with cluster) where this start called: Scap1_28 (BI2),

Start 7:

- Found in 25 of 48 (52.1%) of genes in pham
- Manual Annotations of this start: 2 of 45
- Called 8.0% of time when present
- Phage (with cluster) where this start called: CherryBlossom_37 (BI1), GirlPower_34 (BI1),

Start 8:

- Found in 48 of 48 (100.0%) of genes in pham
- Manual Annotations of this start: 42 of 45
- Called 93.8% of time when present
- Phage (with cluster) where this start called: Annihilus_29 (BI2), Bilo_28 (BI2), ClubPenguin_32 (BI7), Cricko_34 (BI4), Ditters_27 (BI2), Doxi13_29 (BI2), DrGrey_36 (BI1), Esketit_37 (BI1), Espio_37 (BI1), FidgetOrca_37 (BI1), FrodoSwaggins_37 (BI1), FromIndy_34 (BI4), GoblinVoyage_29 (BI2), HazuAndZazu_36 (BI1), Hoshi_37 (BI1), HotFries_27 (BI2), IceWarrior_36 (BI1), Indigenous_37 (BI1), Jaylociraptor_37 (BI1), Kardashian_35 (BI6), LibertyBell_31 (BI3), Madamato_35 (BI1), Maya_37 (BI1), Meibysrarus_36 (BI1), Miek_33 (BI4), Monse_27 (BI2), Moozy_29 (BI2), Namu_37 (BI1), OlympicHelado_37 (BI1), PherryCruz_28 (BI2), Popy_37 (BI1), Rainydai_34 (BI4), RavenPuff_28 (BI2), Regigigas_35 (BI4), Rima_37 (BI1), RosaAsantewaa_27 (BI2), Sangak_28 (BI2), SendItCS_32 (BI4), SheRa_28 (BI2), Soshi_36 (BI1), Spectropatronm_37 (BI1), TaidaOne_37 (BI1), Thiqqums_34 (BI4), TieDye_36 (BI1), TonyStarch_36 (BI1),

Summary by clusters:

There are 6 clusters represented in this pham: BI6, BI7, BI4, BI2, BI3, BI1,

Info for manual annotations of cluster BI1:

- Start number 7 was manually annotated 2 times for cluster BI1.
- Start number 8 was manually annotated 22 times for cluster BI1.

Info for manual annotations of cluster BI2:

- Start number 2 was manually annotated 1 time for cluster BI2.
- Start number 8 was manually annotated 12 times for cluster BI2.

Info for manual annotations of cluster BI3:

- Start number 8 was manually annotated 1 time for cluster BI3.

Info for manual annotations of cluster BI4:

- Start number 8 was manually annotated 5 times for cluster BI4.

Info for manual annotations of cluster BI6:

- Start number 8 was manually annotated 1 time for cluster BI6.

Info for manual annotations of cluster BI7:

- Start number 8 was manually annotated 1 time for cluster BI7.

Gene Information:

Gene: Annihilus_29 Start: 23803, Stop: 24042, Start Num: 8

Candidate Starts for Annihilus_29:

(5, 23773), (6, 23776), (Start: 8 @23803 has 42 MA's), (9, 23833), (10, 23839), (19, 23935), (22, 23965),

Gene: Bilo_28 Start: 24017, Stop: 24256, Start Num: 8

Candidate Starts for Bilo_28:

(Start: 2 @23960 has 1 MA's), (6, 23990), (Start: 8 @24017 has 42 MA's), (9, 24047), (10, 24053), (19, 24149), (22, 24179),

Gene: CherryBlossom_37 Start: 27952, Stop: 28212, Start Num: 7

Candidate Starts for CherryBlossom_37:

(Start: 7 @27952 has 2 MA's), (Start: 8 @27964 has 42 MA's), (18, 28102), (19, 28105), (26, 28165),

Gene: ClubPenguin_32 Start: 26523, Stop: 26768, Start Num: 8

Candidate Starts for ClubPenguin_32:

(Start: 7 @26511 has 2 MA's), (Start: 8 @26523 has 42 MA's), (12, 26598), (16, 26634), (17, 26643),

Gene: CricKo_34 Start: 26745, Stop: 26987, Start Num: 8

Candidate Starts for CricKo_34:

(Start: 8 @26745 has 42 MA's), (26, 26934),

Gene: Ditters_27 Start: 23681, Stop: 23923, Start Num: 8

Candidate Starts for Ditters_27:

(1, 23588), (5, 23651), (6, 23654), (Start: 8 @23681 has 42 MA's), (9, 23711), (11, 23720), (15, 23777), (19, 23816), (22, 23846),

Gene: Doxi13_29 Start: 23766, Stop: 24005, Start Num: 8

Candidate Starts for Doxi13_29:

(5, 23736), (6, 23739), (Start: 8 @23766 has 42 MA's), (9, 23796), (10, 23802), (19, 23898), (22, 23928),

Gene: DrGrey_36 Start: 28304, Stop: 28552, Start Num: 8

Candidate Starts for DrGrey_36:

(Start: 7 @28292 has 2 MA's), (Start: 8 @28304 has 42 MA's), (18, 28442), (19, 28445), (26, 28505),

Gene: Esketit_37 Start: 28039, Stop: 28287, Start Num: 8

Candidate Starts for Esketit_37:

(Start: 7 @28027 has 2 MA's), (Start: 8 @28039 has 42 MA's), (18, 28177), (19, 28180), (26, 28240),

Gene: Espio_37 Start: 28699, Stop: 28947, Start Num: 8

Candidate Starts for Espio_37:

(Start: 7 @28687 has 2 MA's), (Start: 8 @28699 has 42 MA's), (18, 28837), (19, 28840), (26, 28900),

Gene: FidgetOrca_37 Start: 28044, Stop: 28292, Start Num: 8

Candidate Starts for FidgetOrca_37:

(Start: 7 @28032 has 2 MA's), (Start: 8 @28044 has 42 MA's), (18, 28182), (19, 28185), (26, 28245),

Gene: FrodoSwaggins_37 Start: 28698, Stop: 28946, Start Num: 8

Candidate Starts for FrodoSwaggins_37:

(Start: 7 @28686 has 2 MA's), (Start: 8 @28698 has 42 MA's), (18, 28836), (19, 28839), (26, 28899),

Gene: FromIndy_34 Start: 26349, Stop: 26591, Start Num: 8

Candidate Starts for FromIndy_34:

(Start: 8 @26349 has 42 MA's), (26, 26538),

Gene: GirlPower_34 Start: 29017, Stop: 29277, Start Num: 7

Candidate Starts for GirlPower_34:

(Start: 7 @29017 has 2 MA's), (Start: 8 @29029 has 42 MA's), (16, 29146), (18, 29167), (19, 29170),

Gene: GoblinVoyage_29 Start: 23766, Stop: 24005, Start Num: 8

Candidate Starts for GoblinVoyage_29:

(5, 23736), (6, 23739), (Start: 8 @23766 has 42 MA's), (9, 23796), (10, 23802), (19, 23898), (22, 23928),

Gene: HazuAndZazu_36 Start: 28300, Stop: 28548, Start Num: 8

Candidate Starts for HazuAndZazu_36:

(Start: 7 @28288 has 2 MA's), (Start: 8 @28300 has 42 MA's), (18, 28438), (19, 28441), (26, 28501),

Gene: Hoshi_37 Start: 28039, Stop: 28287, Start Num: 8

Candidate Starts for Hoshi_37:

(Start: 7 @28027 has 2 MA's), (Start: 8 @28039 has 42 MA's), (18, 28177), (19, 28180), (26, 28240),

Gene: HotFries_27 Start: 23496, Stop: 23735, Start Num: 8

Candidate Starts for HotFries_27:

(5, 23466), (6, 23469), (Start: 8 @23496 has 42 MA's), (9, 23526), (10, 23532), (19, 23628), (22, 23658),

Gene: IceWarrior_36 Start: 27739, Stop: 27987, Start Num: 8

Candidate Starts for IceWarrior_36:

(Start: 7 @27727 has 2 MA's), (Start: 8 @27739 has 42 MA's), (18, 27877), (19, 27880), (26, 27940),

Gene: Indigenous_37 Start: 28039, Stop: 28287, Start Num: 8

Candidate Starts for Indigenous_37:

(Start: 7 @28027 has 2 MA's), (Start: 8 @28039 has 42 MA's), (18, 28177), (19, 28180), (26, 28240),

Gene: Jaylociraptor_37 Start: 28039, Stop: 28287, Start Num: 8

Candidate Starts for Jaylociraptor_37:

(Start: 7 @28027 has 2 MA's), (Start: 8 @28039 has 42 MA's), (18, 28177), (19, 28180), (26, 28240),

Gene: Kardashian_35 Start: 27816, Stop: 28064, Start Num: 8
Candidate Starts for Kardashian_35:
(6, 27786), (Start: 8 @27816 has 42 MA's), (20, 27963),

Gene: LibertyBell_31 Start: 25601, Stop: 25855, Start Num: 8
Candidate Starts for LibertyBell_31:
(4, 25556), (Start: 8 @25601 has 42 MA's), (21, 25763), (23, 25775), (25, 25793),

Gene: Madamoto_35 Start: 27294, Stop: 27545, Start Num: 8
Candidate Starts for Madamoto_35:
(Start: 7 @27282 has 2 MA's), (Start: 8 @27294 has 42 MA's), (19, 27435),

Gene: Maya_37 Start: 28053, Stop: 28301, Start Num: 8
Candidate Starts for Maya_37:
(Start: 7 @28041 has 2 MA's), (Start: 8 @28053 has 42 MA's), (18, 28191), (19, 28194), (26, 28254),

Gene: Meibysrarus_36 Start: 27738, Stop: 27986, Start Num: 8
Candidate Starts for Meibysrarus_36:
(Start: 7 @27726 has 2 MA's), (Start: 8 @27738 has 42 MA's), (18, 27876), (19, 27879), (26, 27939),

Gene: Miek_33 Start: 26361, Stop: 26603, Start Num: 8
Candidate Starts for Miek_33:
(Start: 8 @26361 has 42 MA's), (26, 26550),

Gene: Monse_27 Start: 23232, Stop: 23474, Start Num: 8
Candidate Starts for Monse_27:
(1, 23139), (3, 23175), (6, 23205), (Start: 8 @23232 has 42 MA's), (9, 23262), (11, 23271), (15, 23328),
(19, 23367), (22, 23397),

Gene: Moozy_29 Start: 23790, Stop: 24029, Start Num: 8
Candidate Starts for Moozy_29:
(5, 23760), (6, 23763), (Start: 8 @23790 has 42 MA's), (9, 23820), (10, 23826), (19, 23922), (22,
23952),

Gene: Namo_37 Start: 28045, Stop: 28293, Start Num: 8
Candidate Starts for Namo_37:
(Start: 7 @28033 has 2 MA's), (Start: 8 @28045 has 42 MA's), (18, 28183), (19, 28186), (26, 28246),

Gene: OlympicHelado_37 Start: 28045, Stop: 28293, Start Num: 8
Candidate Starts for OlympicHelado_37:
(Start: 7 @28033 has 2 MA's), (Start: 8 @28045 has 42 MA's), (18, 28183), (19, 28186), (26, 28246),

Gene: PherryCruz_28 Start: 23765, Stop: 24004, Start Num: 8
Candidate Starts for PherryCruz_28:
(5, 23735), (6, 23738), (Start: 8 @23765 has 42 MA's), (9, 23795), (10, 23801), (19, 23897), (22,
23927),

Gene: Popy_37 Start: 28698, Stop: 28946, Start Num: 8
Candidate Starts for Popy_37:
(Start: 7 @28686 has 2 MA's), (Start: 8 @28698 has 42 MA's), (18, 28836), (19, 28839), (26, 28899),

Gene: Rainydai_34 Start: 26745, Stop: 26987, Start Num: 8
Candidate Starts for Rainydai_34:

(Start: 8 @26745 has 42 MA's), (26, 26934),

Gene: RavenPuff_28 Start: 23765, Stop: 24004, Start Num: 8

Candidate Starts for RavenPuff_28:

(5, 23735), (6, 23738), (Start: 8 @23765 has 42 MA's), (9, 23795), (10, 23801), (19, 23897), (22, 23927),

Gene: Regigigas_35 Start: 26745, Stop: 26987, Start Num: 8

Candidate Starts for Regigigas_35:

(Start: 8 @26745 has 42 MA's), (26, 26934),

Gene: Rima_37 Start: 28045, Stop: 28293, Start Num: 8

Candidate Starts for Rima_37:

(Start: 7 @28033 has 2 MA's), (Start: 8 @28045 has 42 MA's), (18, 28183), (19, 28186), (26, 28246),

Gene: RosaAsantewaa_27 Start: 23272, Stop: 23511, Start Num: 8

Candidate Starts for RosaAsantewaa_27:

(6, 23245), (Start: 8 @23272 has 42 MA's), (10, 23308), (13, 23350), (14, 23353), (19, 23404), (24, 23452),

Gene: Sangak_28 Start: 23490, Stop: 23729, Start Num: 8

Candidate Starts for Sangak_28:

(Start: 2 @23433 has 1 MA's), (5, 23460), (6, 23463), (Start: 8 @23490 has 42 MA's), (9, 23520), (19, 23622), (22, 23652),

Gene: Scap1_28 Start: 23389, Stop: 23688, Start Num: 2

Candidate Starts for Scap1_28:

(Start: 2 @23389 has 1 MA's), (5, 23416), (6, 23419), (Start: 8 @23446 has 42 MA's), (9, 23476), (11, 23485), (19, 23581), (22, 23611),

Gene: SendItCS_32 Start: 26361, Stop: 26603, Start Num: 8

Candidate Starts for SendItCS_32:

(Start: 8 @26361 has 42 MA's), (26, 26550),

Gene: SheRa_28 Start: 23497, Stop: 23736, Start Num: 8

Candidate Starts for SheRa_28:

(5, 23467), (6, 23470), (Start: 8 @23497 has 42 MA's), (9, 23527), (10, 23533), (19, 23629), (22, 23659),

Gene: Soshi_36 Start: 28310, Stop: 28558, Start Num: 8

Candidate Starts for Soshi_36:

(Start: 7 @28298 has 2 MA's), (Start: 8 @28310 has 42 MA's), (18, 28448), (19, 28451), (26, 28511),

Gene: Spectropatronm_37 Start: 28039, Stop: 28287, Start Num: 8

Candidate Starts for Spectropatronm_37:

(Start: 7 @28027 has 2 MA's), (Start: 8 @28039 has 42 MA's), (18, 28177), (19, 28180), (26, 28240),

Gene: TaidaOne_37 Start: 28595, Stop: 28843, Start Num: 8

Candidate Starts for TaidaOne_37:

(Start: 7 @28583 has 2 MA's), (Start: 8 @28595 has 42 MA's), (18, 28733), (19, 28736), (26, 28796),

Gene: Thiqqums_34 Start: 26745, Stop: 26987, Start Num: 8

Candidate Starts for Thiqqums_34:

(Start: 8 @26745 has 42 MA's), (26, 26934),

Gene: TieDye_36 Start: 27639, Stop: 27887, Start Num: 8

Candidate Starts for TieDye_36:

(Start: 7 @27627 has 2 MA's), (Start: 8 @27639 has 42 MA's), (18, 27777), (19, 27780), (26, 27840),

Gene: TonyStarch_36 Start: 27744, Stop: 27992, Start Num: 8

Candidate Starts for TonyStarch_36:

(Start: 7 @27732 has 2 MA's), (Start: 8 @27744 has 42 MA's), (18, 27882), (19, 27885), (26, 27945),