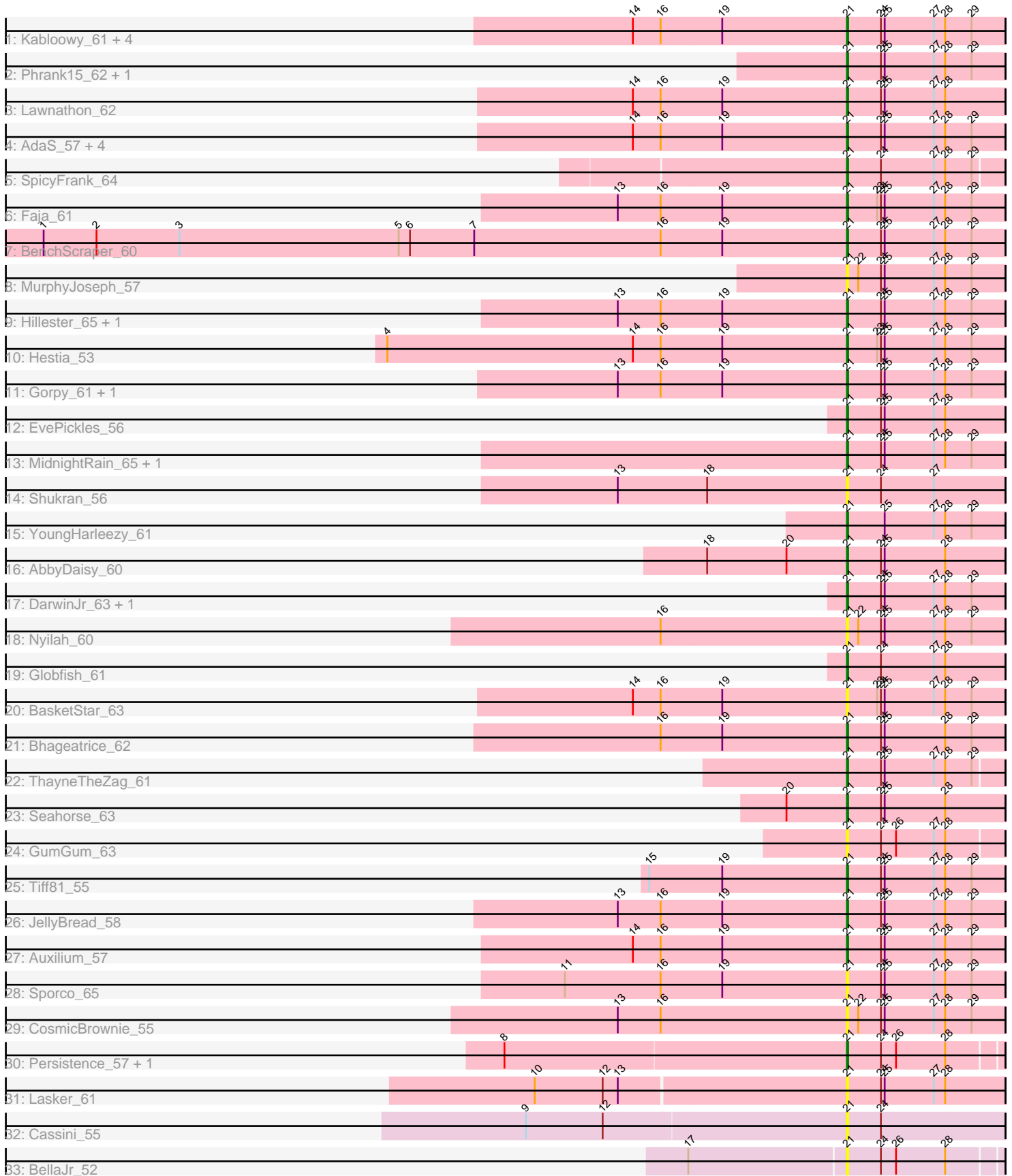


Pham 305101



Note: Tracks are now grouped by subcluster and scaled. Switching in subcluster is indicated by changes in track color. Track scale is now set by default to display the region 30 bp upstream of start 1 to 30 bp downstream of the last possible start. If this default region is judged to be packed too tightly with annotated starts, the track will be further scaled to only show that region of the ORF with annotated starts. This action will be indicated by adding "Zoomed" to the title. For starts, yellow indicates the location of called starts comprised solely of Glimmer/GeneMark auto-annotations, green indicates the location of called starts with at least 1 manual gene annotation.

Pham 305101 Report

This analysis was run 06/08/26 on database version 649.

Pham number 305101 has 47 members, 14 are drafts.

Phages represented in each track:

- Track 1 : Kabloowy_61, MaterMagnus_62, Raphaella_60, Aikyam_60, MUWow_61
- Track 2 : Phrank15_62, Satrap_61
- Track 3 : Lawnathon_62
- Track 4 : AdaS_57, CookieBear_61, BlueShadow_61, Isolde_60, BillyTP_63
- Track 5 : SpicyFrank_64
- Track 6 : Faja_61
- Track 7 : BenchScraper_60
- Track 8 : MurphyJoseph_57
- Track 9 : Hillester_65, RadFad_65
- Track 10 : Hestia_53
- Track 11 : Gorpy_61, Sakai_60
- Track 12 : EvePickles_56
- Track 13 : MidnightRain_65, Mapleville_57
- Track 14 : Shukran_56
- Track 15 : YoungHarleezy_61
- Track 16 : AbbyDaisy_60
- Track 17 : DarwinJr_63, Crescenzo_61
- Track 18 : Nyilah_60
- Track 19 : Globfish_61
- Track 20 : BasketStar_63
- Track 21 : Bhageatrice_62
- Track 22 : ThayneTheZag_61
- Track 23 : Seahorse_63
- Track 24 : GumGum_63
- Track 25 : Tiff81_55
- Track 26 : JellyBread_58
- Track 27 : Auxilium_57
- Track 28 : Sporco_65
- Track 29 : CosmicBrownie_55
- Track 30 : Persistence_57, JakeTheSnake_67
- Track 31 : Lasker_61
- Track 32 : Cassini_55
- Track 33 : BellaJr_52

Summary of Final Annotations (See graph section above for start numbers):

The start number called the most often in the published annotations is 21, it was called in 33 of the 33 non-draft genes in the pham.

Genes that call this "Most Annotated" start:

- AbbyDaisy_60, AdaS_57, Aikyam_60, Auxilium_57, BasketStar_63, BellaJr_52, BenchScraper_60, Bhageatrice_62, BillyTP_63, BlueShadow_61, Cassini_55, CookieBear_61, CosmicBrownie_55, Crescenzo_61, DarwinJr_63, EvePickles_56, Faja_61, Globfish_61, Gorpy_61, GumGum_63, Hestia_53, Hillester_65, Isolde_60, JakeTheSnake_67, JellyBread_58, Kabloowy_61, Lasker_61, Lawnathon_62, MUWow_61, Mapleville_57, MaterMagnus_62, MidnightRain_65, MurphyJoseph_57, Nyilah_60, Persistence_57, Phrank15_62, RadFad_65, Raphaella_60, Sakai_60, Satrap_61, Seahorse_63, Shukran_56, SpicyFrank_64, Sporco_65, ThayneTheZag_61, Tiff81_55, YoungHarleezy_61,

Genes that have the "Most Annotated" start but do not call it:

-

Genes that do not have the "Most Annotated" start:

-

Summary by start number:

Start 21:

- Found in 47 of 47 (100.0%) of genes in pham
- Manual Annotations of this start: 33 of 33
- Called 100.0% of time when present
- Phage (with cluster) where this start called: AbbyDaisy_60 (AY), AdaS_57 (AY), Aikyam_60 (AY), Auxilium_57 (AY), BasketStar_63 (AY), BellaJr_52 (FN), BenchScraper_60 (AY), Bhageatrice_62 (AY), BillyTP_63 (AY), BlueShadow_61 (AY), Cassini_55 (FN), CookieBear_61 (AY), CosmicBrownie_55 (AY), Crescenzo_61 (AY), DarwinJr_63 (AY), EvePickles_56 (AY), Faja_61 (AY), Globfish_61 (AY), Gorpy_61 (AY), GumGum_63 (AY), Hestia_53 (AY), Hillester_65 (AY), Isolde_60 (AY), JakeTheSnake_67 (AY), JellyBread_58 (AY), Kabloowy_61 (AY), Lasker_61 (AY), Lawnathon_62 (AY), MUWow_61 (AY), Mapleville_57 (AY), MaterMagnus_62 (AY), MidnightRain_65 (AY), MurphyJoseph_57 (AY), Nyilah_60 (AY), Persistence_57 (AY), Phrank15_62 (AY), RadFad_65 (AY), Raphaella_60 (AY), Sakai_60 (AY), Satrap_61 (AY), Seahorse_63 (AY), Shukran_56 (AY), SpicyFrank_64 (AY), Sporco_65 (AY), ThayneTheZag_61 (AY), Tiff81_55 (AY), YoungHarleezy_61 (AY),

Summary by clusters:

There are 2 clusters represented in this pham: AY, FN,

Info for manual annotations of cluster AY:

- Start number 21 was manually annotated 33 times for cluster AY.

Gene Information:

Gene: AbbyDaisy_60 Start: 34539, Stop: 34664, Start Num: 21
Candidate Starts for AbbyDaisy_60:
(18, 34428), (20, 34491), (Start: 21 @34539 has 33 MA's), (24, 34566), (25, 34569), (28, 34617),

Gene: AdaS_57 Start: 32356, Stop: 32481, Start Num: 21
Candidate Starts for AdaS_57:
(14, 32188), (16, 32209), (19, 32257), (Start: 21 @32356 has 33 MA's), (24, 32383), (25, 32386), (27, 32425), (28, 32434), (29, 32455),

Gene: Aikyam_60 Start: 32675, Stop: 32800, Start Num: 21
Candidate Starts for Aikyam_60:
(14, 32507), (16, 32528), (19, 32576), (Start: 21 @32675 has 33 MA's), (24, 32702), (25, 32705), (27, 32744), (28, 32753), (29, 32774),

Gene: Auxilium_57 Start: 31829, Stop: 31954, Start Num: 21
Candidate Starts for Auxilium_57:
(14, 31661), (16, 31682), (19, 31730), (Start: 21 @31829 has 33 MA's), (24, 31856), (25, 31859), (27, 31898), (28, 31907), (29, 31928),

Gene: BasketStar_63 Start: 35026, Stop: 35151, Start Num: 21
Candidate Starts for BasketStar_63:
(14, 34858), (16, 34879), (19, 34927), (Start: 21 @35026 has 33 MA's), (23, 35050), (24, 35053), (25, 35056), (27, 35095), (28, 35104), (29, 35125),

Gene: BellaJr_52 Start: 32497, Stop: 32616, Start Num: 21
Candidate Starts for BellaJr_52:
(17, 32374), (Start: 21 @32497 has 33 MA's), (24, 32524), (26, 32536), (28, 32575),

Gene: BenchScraper_60 Start: 33867, Stop: 33992, Start Num: 21
Candidate Starts for BenchScraper_60:
(1, 33231), (2, 33273), (3, 33339), (5, 33513), (6, 33522), (7, 33573), (16, 33720), (19, 33768), (Start: 21 @33867 has 33 MA's), (24, 33894), (25, 33897), (27, 33936), (28, 33945), (29, 33966),

Gene: Bhageatrice_62 Start: 36379, Stop: 36504, Start Num: 21
Candidate Starts for Bhageatrice_62:
(16, 36232), (19, 36280), (Start: 21 @36379 has 33 MA's), (24, 36406), (25, 36409), (28, 36457), (29, 36478),

Gene: BillyTP_63 Start: 35722, Stop: 35847, Start Num: 21
Candidate Starts for BillyTP_63:
(14, 35554), (16, 35575), (19, 35623), (Start: 21 @35722 has 33 MA's), (24, 35749), (25, 35752), (27, 35791), (28, 35800), (29, 35821),

Gene: BlueShadow_61 Start: 34512, Stop: 34637, Start Num: 21
Candidate Starts for BlueShadow_61:
(14, 34344), (16, 34365), (19, 34413), (Start: 21 @34512 has 33 MA's), (24, 34539), (25, 34542), (27, 34581), (28, 34590), (29, 34611),

Gene: Cassini_55 Start: 33068, Stop: 33193, Start Num: 21
Candidate Starts for Cassini_55:
(9, 32819), (12, 32879), (Start: 21 @33068 has 33 MA's), (24, 33095),

Gene: CookieBear_61 Start: 34106, Stop: 34231, Start Num: 21

Candidate Starts for CookieBear_61:

(14, 33938), (16, 33959), (19, 34007), (Start: 21 @34106 has 33 MA's), (24, 34133), (25, 34136), (27, 34175), (28, 34184), (29, 34205),

Gene: CosmicBrownie_55 Start: 32517, Stop: 32642, Start Num: 21

Candidate Starts for CosmicBrownie_55:

(13, 32337), (16, 32370), (Start: 21 @32517 has 33 MA's), (22, 32526), (24, 32544), (25, 32547), (27, 32586), (28, 32595), (29, 32616),

Gene: Crescenzo_61 Start: 35258, Stop: 35383, Start Num: 21

Candidate Starts for Crescenzo_61:

(Start: 21 @35258 has 33 MA's), (24, 35285), (25, 35288), (27, 35327), (28, 35336), (29, 35357),

Gene: DarwinJr_63 Start: 35213, Stop: 35338, Start Num: 21

Candidate Starts for DarwinJr_63:

(Start: 21 @35213 has 33 MA's), (24, 35240), (25, 35243), (27, 35282), (28, 35291), (29, 35312),

Gene: EvePickles_56 Start: 34096, Stop: 34221, Start Num: 21

Candidate Starts for EvePickles_56:

(Start: 21 @34096 has 33 MA's), (24, 34123), (25, 34126), (27, 34165), (28, 34174),

Gene: Faja_61 Start: 35481, Stop: 35606, Start Num: 21

Candidate Starts for Faja_61:

(13, 35301), (16, 35334), (19, 35382), (Start: 21 @35481 has 33 MA's), (23, 35505), (24, 35508), (25, 35511), (27, 35550), (28, 35559), (29, 35580),

Gene: Globfish_61 Start: 34535, Stop: 34660, Start Num: 21

Candidate Starts for Globfish_61:

(Start: 21 @34535 has 33 MA's), (24, 34562), (27, 34604), (28, 34613),

Gene: Gorpy_61 Start: 35098, Stop: 35223, Start Num: 21

Candidate Starts for Gorpy_61:

(13, 34918), (16, 34951), (19, 34999), (Start: 21 @35098 has 33 MA's), (24, 35125), (25, 35128), (27, 35167), (28, 35176), (29, 35197),

Gene: GumGum_63 Start: 34083, Stop: 34205, Start Num: 21

Candidate Starts for GumGum_63:

(Start: 21 @34083 has 33 MA's), (24, 34110), (26, 34122), (27, 34152), (28, 34161),

Gene: Hestia_53 Start: 31665, Stop: 31790, Start Num: 21

Candidate Starts for Hestia_53:

(4, 31302), (14, 31497), (16, 31518), (19, 31566), (Start: 21 @31665 has 33 MA's), (23, 31689), (24, 31692), (25, 31695), (27, 31734), (28, 31743), (29, 31764),

Gene: Hillester_65 Start: 35445, Stop: 35570, Start Num: 21

Candidate Starts for Hillester_65:

(13, 35265), (16, 35298), (19, 35346), (Start: 21 @35445 has 33 MA's), (24, 35472), (25, 35475), (27, 35514), (28, 35523), (29, 35544),

Gene: Isolde_60 Start: 33775, Stop: 33900, Start Num: 21

Candidate Starts for Isolde_60:

(14, 33607), (16, 33628), (19, 33676), (Start: 21 @33775 has 33 MA's), (24, 33802), (25, 33805), (27, 33844), (28, 33853), (29, 33874),

Gene: JakeTheSnake_67 Start: 36519, Stop: 36638, Start Num: 21

Candidate Starts for JakeTheSnake_67:

(8, 36249), (Start: 21 @36519 has 33 MA's), (24, 36546), (26, 36558), (28, 36597),

Gene: JellyBread_58 Start: 33127, Stop: 33252, Start Num: 21

Candidate Starts for JellyBread_58:

(13, 32947), (16, 32980), (19, 33028), (Start: 21 @33127 has 33 MA's), (24, 33154), (25, 33157), (27, 33196), (28, 33205), (29, 33226),

Gene: Kabloowy_61 Start: 35047, Stop: 35172, Start Num: 21

Candidate Starts for Kabloowy_61:

(14, 34879), (16, 34900), (19, 34948), (Start: 21 @35047 has 33 MA's), (24, 35074), (25, 35077), (27, 35116), (28, 35125), (29, 35146),

Gene: Lasker_61 Start: 34607, Stop: 34732, Start Num: 21

Candidate Starts for Lasker_61:

(10, 34364), (12, 34418), (13, 34430), (Start: 21 @34607 has 33 MA's), (24, 34634), (25, 34637), (27, 34676), (28, 34685),

Gene: Lawnathon_62 Start: 34267, Stop: 34392, Start Num: 21

Candidate Starts for Lawnathon_62:

(14, 34099), (16, 34120), (19, 34168), (Start: 21 @34267 has 33 MA's), (24, 34294), (25, 34297), (27, 34336), (28, 34345),

Gene: MUWow_61 Start: 34442, Stop: 34567, Start Num: 21

Candidate Starts for MUWow_61:

(14, 34274), (16, 34295), (19, 34343), (Start: 21 @34442 has 33 MA's), (24, 34469), (25, 34472), (27, 34511), (28, 34520), (29, 34541),

Gene: Mapleville_57 Start: 33586, Stop: 33711, Start Num: 21

Candidate Starts for Mapleville_57:

(Start: 21 @33586 has 33 MA's), (24, 33613), (25, 33616), (27, 33655), (28, 33664), (29, 33685),

Gene: MaterMagnus_62 Start: 34847, Stop: 34972, Start Num: 21

Candidate Starts for MaterMagnus_62:

(14, 34679), (16, 34700), (19, 34748), (Start: 21 @34847 has 33 MA's), (24, 34874), (25, 34877), (27, 34916), (28, 34925), (29, 34946),

Gene: MidnightRain_65 Start: 35616, Stop: 35741, Start Num: 21

Candidate Starts for MidnightRain_65:

(Start: 21 @35616 has 33 MA's), (24, 35643), (25, 35646), (27, 35685), (28, 35694), (29, 35715),

Gene: MurphyJoseph_57 Start: 33043, Stop: 33168, Start Num: 21

Candidate Starts for MurphyJoseph_57:

(Start: 21 @33043 has 33 MA's), (22, 33052), (24, 33070), (25, 33073), (27, 33112), (28, 33121), (29, 33142),

Gene: Nyilah_60 Start: 32673, Stop: 32798, Start Num: 21

Candidate Starts for Nyilah_60:

(16, 32526), (Start: 21 @32673 has 33 MA's), (22, 32682), (24, 32700), (25, 32703), (27, 32742), (28, 32751), (29, 32772),

Gene: Persistence_57 Start: 33216, Stop: 33335, Start Num: 21

Candidate Starts for Persistence_57:

(8, 32946), (Start: 21 @33216 has 33 MA's), (24, 33243), (26, 33255), (28, 33294),

Gene: Phrank15_62 Start: 34398, Stop: 34523, Start Num: 21

Candidate Starts for Phrank15_62:

(Start: 21 @34398 has 33 MA's), (24, 34425), (25, 34428), (27, 34467), (28, 34476), (29, 34497),

Gene: RadFad_65 Start: 35445, Stop: 35570, Start Num: 21

Candidate Starts for RadFad_65:

(13, 35265), (16, 35298), (19, 35346), (Start: 21 @35445 has 33 MA's), (24, 35472), (25, 35475), (27, 35514), (28, 35523), (29, 35544),

Gene: Raphaella_60 Start: 33965, Stop: 34090, Start Num: 21

Candidate Starts for Raphaella_60:

(14, 33797), (16, 33818), (19, 33866), (Start: 21 @33965 has 33 MA's), (24, 33992), (25, 33995), (27, 34034), (28, 34043), (29, 34064),

Gene: Sakai_60 Start: 33809, Stop: 33934, Start Num: 21

Candidate Starts for Sakai_60:

(13, 33629), (16, 33662), (19, 33710), (Start: 21 @33809 has 33 MA's), (24, 33836), (25, 33839), (27, 33878), (28, 33887), (29, 33908),

Gene: Satrap_61 Start: 34245, Stop: 34370, Start Num: 21

Candidate Starts for Satrap_61:

(Start: 21 @34245 has 33 MA's), (24, 34272), (25, 34275), (27, 34314), (28, 34323), (29, 34344),

Gene: Seahorse_63 Start: 35952, Stop: 36077, Start Num: 21

Candidate Starts for Seahorse_63:

(20, 35904), (Start: 21 @35952 has 33 MA's), (24, 35979), (25, 35982), (28, 36030),

Gene: Shukran_56 Start: 32442, Stop: 32567, Start Num: 21

Candidate Starts for Shukran_56:

(13, 32262), (18, 32331), (Start: 21 @32442 has 33 MA's), (24, 32469), (27, 32511),

Gene: SpicyFrank_64 Start: 35216, Stop: 35338, Start Num: 21

Candidate Starts for SpicyFrank_64:

(Start: 21 @35216 has 33 MA's), (24, 35243), (27, 35285), (28, 35294), (29, 35315),

Gene: Sporco_65 Start: 35393, Stop: 35518, Start Num: 21

Candidate Starts for Sporco_65:

(11, 35171), (16, 35246), (19, 35294), (Start: 21 @35393 has 33 MA's), (24, 35420), (25, 35423), (27, 35462), (28, 35471), (29, 35492),

Gene: ThayneTheZag_61 Start: 33668, Stop: 33790, Start Num: 21

Candidate Starts for ThayneTheZag_61:

(Start: 21 @33668 has 33 MA's), (24, 33695), (25, 33698), (27, 33737), (28, 33746), (29, 33767),

Gene: Tiff81_55 Start: 32012, Stop: 32137, Start Num: 21

Candidate Starts for Tiff81_55:

(15, 31856), (19, 31913), (Start: 21 @32012 has 33 MA's), (24, 32039), (25, 32042), (27, 32081), (28, 32090), (29, 32111),

Gene: YoungHarleezy_61 Start: 34504, Stop: 34629, Start Num: 21

Candidate Starts for YoungHarleezy_61:

(Start: 21 @34504 has 33 MA's), (25, 34534), (27, 34573), (28, 34582), (29, 34603),