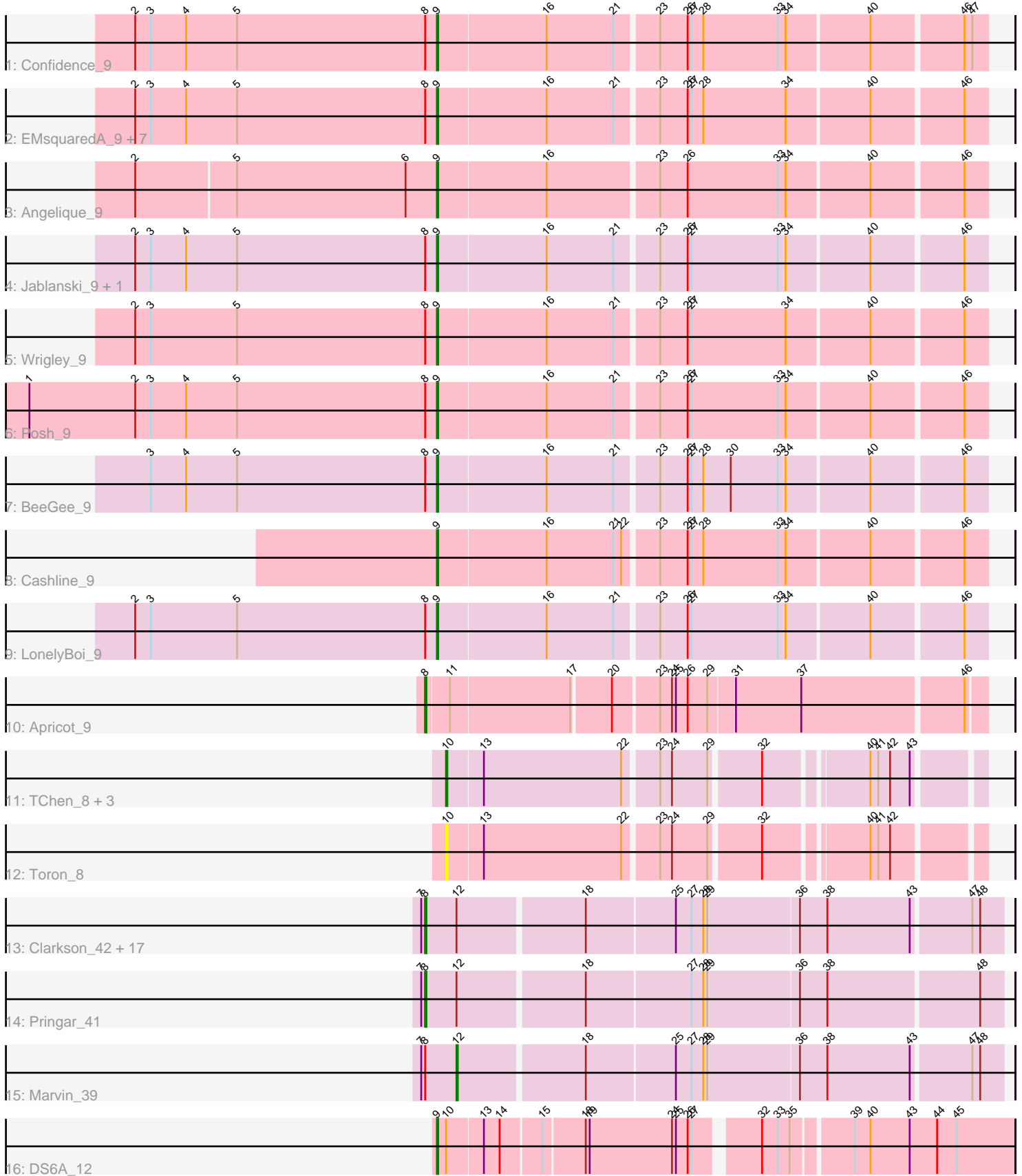


Pham 305123



Note: Tracks are now grouped by subcluster and scaled. Switching in subcluster is indicated by changes in track color. Track scale is now set by default to display the region 30 bp upstream of start 1 to 30 bp downstream of the last possible start. If this default region is judged to be packed too tightly with annotated starts, the track will be further scaled to only show that region of the ORF with annotated starts. This action will be indicated by adding "Zoomed" to the title. For starts, yellow indicates the location of called starts comprised solely of Glimmer/GeneMark auto-annotations, green indicates the location of called starts with at least 1 manual gene annotation.

## Pham 305123 Report

This analysis was run 06/08/26 on database version 649.

Pham number 305123 has 44 members, 2 are drafts.

Phages represented in each track:

- Track 1 : Confidence\_9
- Track 2 : EMSquaredA\_9, Lilas\_9, Bradissa\_9, EnalisNailo\_9, Floral\_9, Pollux\_9, Marteena\_9, BritBrat\_9
- Track 3 : Angelique\_9
- Track 4 : Jablanski\_9, Pytheas\_9
- Track 5 : Wrigley\_9
- Track 6 : Posh\_9
- Track 7 : BeeGee\_9
- Track 8 : Cashline\_9
- Track 9 : LonelyBoi\_9
- Track 10 : Apricot\_9
- Track 11 : TChen\_8, LunaStella\_8, Renaud18\_8, ThetaBob\_8
- Track 12 : Toron\_8
- Track 13 : Clarkson\_42, Caprice\_38, LittleLaf\_41, GoongGoong\_40, MosMoris\_39, Lilbit\_40, Huphlepuuff\_43, Blackbeetle\_41, VasuNzinga\_41, Corazon\_39, Gattaca\_40, FeliMaine\_43, Raela\_41, Tesla\_40, JoieB\_42, Beelzebub\_45, RedRaider77\_41, Poise\_41
- Track 14 : Pringar\_41
- Track 15 : Marvin\_39
- Track 16 : DS6A\_12

### ***Summary of Final Annotations (See graph section above for start numbers):***

The start number called the most often in the published annotations is 8, it was called in 19 of the 42 non-draft genes in the pham.

Genes that call this "Most Annotated" start:

- Apricot\_9, Beelzebub\_45, Blackbeetle\_41, Caprice\_38, Clarkson\_42, Corazon\_39, FeliMaine\_43, Gattaca\_40, GoongGoong\_40, Huphlepuuff\_43, JoieB\_42, Lilbit\_40, LittleLaf\_41, MosMoris\_39, Poise\_41, Pringar\_41, Raela\_41, RedRaider77\_41, Tesla\_40, VasuNzinga\_41,

Genes that have the "Most Annotated" start but do not call it:

- BeeGee\_9, Bradissa\_9, BritBrat\_9, Confidence\_9, EMSquaredA\_9, EnalisNailo\_9, Floral\_9, Jablanski\_9, Lilas\_9, LonelyBoi\_9, Marteena\_9, Marvin\_39, Pollux\_9, Posh\_9, Pytheas\_9, Wrigley\_9,

Genes that do not have the "Most Annotated" start:

- Angelique\_9, Cashline\_9, DS6A\_12, LunaStella\_8, Renaud18\_8, TChen\_8, ThetaBob\_8, Toron\_8,

### Summary by start number:

Start 8:

- Found in 36 of 44 ( 81.8% ) of genes in pham
- Manual Annotations of this start: 19 of 42
- Called 55.6% of time when present
- Phage (with cluster) where this start called: Apricot\_9 (DN3), Beelzebub\_45 (S), Blackbeetle\_41 (S), Caprice\_38 (S), Clarkson\_42 (S), Corazon\_39 (S), FeliMaine\_43 (S), Gattaca\_40 (S), GoongGoong\_40 (S), Huphlepuuff\_43 (S), JoieB\_42 (S), Lilbit\_40 (S), LittleLaf\_41 (S), MosMoris\_39 (S), Poise\_41 (S), Pringar\_41 (S), Raela\_41 (S), RedRaider77\_41 (S), Tesla\_40 (S), VasuNzinga\_41 (S),

Start 9:

- Found in 18 of 44 ( 40.9% ) of genes in pham
- Manual Annotations of this start: 18 of 42
- Called 100.0% of time when present
- Phage (with cluster) where this start called: Angelique\_9 (CY1), BeeGee\_9 (CY5), Bradissa\_9 (CY1), BritBrat\_9 (CY2), Cashline\_9 (CY6), Confidence\_9 (CY1), DS6A\_12 (singleton), EMSquaredA\_9 (CY1), EnalisNailo\_9 (CY1), Floral\_9 (CY1), Jablanski\_9 (CY3), Lilas\_9 (CY1), LonelyBoi\_9 (CY7), Marteena\_9 (CY1), Pollux\_9 (CY1), Posh\_9 (CY4), Pytheas\_9 (CY3), Wrigley\_9 (CY4),

Start 10:

- Found in 6 of 44 ( 13.6% ) of genes in pham
- Manual Annotations of this start: 4 of 42
- Called 83.3% of time when present
- Phage (with cluster) where this start called: LunaStella\_8 (F4), Renaud18\_8 (F4), TChen\_8 (F4), ThetaBob\_8 (F4), Toron\_8 (F6),

Start 12:

- Found in 20 of 44 ( 45.5% ) of genes in pham
- Manual Annotations of this start: 1 of 42
- Called 5.0% of time when present
- Phage (with cluster) where this start called: Marvin\_39 (S),

### Summary by clusters:

There are 12 clusters represented in this pham: CY3, CY2, CY1, CY7, CY6, F6, CY4, singleton, S, DN3, CY5, F4,

Info for manual annotations of cluster CY1:

- Start number 9 was manually annotated 9 times for cluster CY1.

Info for manual annotations of cluster CY2:

- Start number 9 was manually annotated 1 time for cluster CY2.

Info for manual annotations of cluster CY3:

- Start number 9 was manually annotated 2 times for cluster CY3.

Info for manual annotations of cluster CY4:

- Start number 9 was manually annotated 2 times for cluster CY4.

Info for manual annotations of cluster CY5:

- Start number 9 was manually annotated 1 time for cluster CY5.

Info for manual annotations of cluster CY6:

- Start number 9 was manually annotated 1 time for cluster CY6.

Info for manual annotations of cluster CY7:

- Start number 9 was manually annotated 1 time for cluster CY7.

Info for manual annotations of cluster DN3:

- Start number 8 was manually annotated 1 time for cluster DN3.

Info for manual annotations of cluster F4:

- Start number 10 was manually annotated 4 times for cluster F4.

Info for manual annotations of cluster S:

- Start number 8 was manually annotated 18 times for cluster S.
- Start number 12 was manually annotated 1 time for cluster S.

### **Gene Information:**

Gene: Angelique\_9 Start: 7078, Stop: 7479, Start Num: 9

Candidate Starts for Angelique\_9:

(2, 6850), (5, 6925), (6, 7054), (Start: 9 @7078 has 18 MA's), (16, 7159), (23, 7240), (26, 7261), (33, 7330), (34, 7336), (40, 7396), (46, 7462),

Gene: Apricot\_9 Start: 6396, Stop: 6794, Start Num: 8

Candidate Starts for Apricot\_9:

(Start: 8 @6396 has 19 MA's), (11, 6411), (17, 6501), (20, 6528), (23, 6561), (24, 6570), (25, 6573), (26, 6582), (29, 6597), (31, 6615), (37, 6663), (46, 6780),

Gene: BeeGee\_9 Start: 7080, Stop: 7481, Start Num: 9

Candidate Starts for BeeGee\_9:

(3, 6861), (4, 6888), (5, 6927), (Start: 8 @7071 has 19 MA's), (Start: 9 @7080 has 18 MA's), (16, 7161), (21, 7212), (23, 7242), (26, 7263), (27, 7266), (28, 7275), (30, 7296), (33, 7332), (34, 7338), (40, 7398), (46, 7464),

Gene: Beelzebub\_45 Start: 17697, Stop: 18122, Start Num: 8

Candidate Starts for Beelzebub\_45:

(7, 17694), (Start: 8 @17697 has 19 MA's), (Start: 12 @17721 has 1 MA's), (18, 17814), (25, 17880), (27, 17892), (28, 17901), (29, 17904), (36, 17973), (38, 17994), (43, 18057), (47, 18099), (48, 18105),

Gene: Blackbeetle\_41 Start: 16716, Stop: 17141, Start Num: 8

Candidate Starts for Blackbeetle\_41:

(7, 16713), (Start: 8 @16716 has 19 MA's), (Start: 12 @16740 has 1 MA's), (18, 16833), (25, 16899), (27, 16911), (28, 16920), (29, 16923), (36, 16992), (38, 17013), (43, 17076), (47, 17118), (48, 17124),

Gene: Bradissa\_9 Start: 7084, Stop: 7485, Start Num: 9

Candidate Starts for Bradissa\_9:

(2, 6853), (3, 6865), (4, 6892), (5, 6931), (Start: 8 @7075 has 19 MA's), (Start: 9 @7084 has 18 MA's), (16, 7165), (21, 7216), (23, 7246), (26, 7267), (27, 7270), (28, 7279), (34, 7342), (40, 7402), (46, 7468),

Gene: BritBrat\_9 Start: 7086, Stop: 7487, Start Num: 9

Candidate Starts for BritBrat\_9:

(2, 6855), (3, 6867), (4, 6894), (5, 6933), (Start: 8 @7077 has 19 MA's), (Start: 9 @7086 has 18 MA's), (16, 7167), (21, 7218), (23, 7248), (26, 7269), (27, 7272), (28, 7281), (34, 7344), (40, 7404), (46, 7470),

Gene: Caprice\_38 Start: 16786, Stop: 17211, Start Num: 8

Candidate Starts for Caprice\_38:

(7, 16783), (Start: 8 @16786 has 19 MA's), (Start: 12 @16810 has 1 MA's), (18, 16903), (25, 16969), (27, 16981), (28, 16990), (29, 16993), (36, 17062), (38, 17083), (43, 17146), (47, 17188), (48, 17194),

Gene: Cashline\_9 Start: 6933, Stop: 7334, Start Num: 9

Candidate Starts for Cashline\_9:

(Start: 9 @6933 has 18 MA's), (16, 7014), (21, 7065), (22, 7071), (23, 7095), (26, 7116), (27, 7119), (28, 7128), (33, 7185), (34, 7191), (40, 7251), (46, 7317),

Gene: Clarkson\_42 Start: 17398, Stop: 17823, Start Num: 8

Candidate Starts for Clarkson\_42:

(7, 17395), (Start: 8 @17398 has 19 MA's), (Start: 12 @17422 has 1 MA's), (18, 17515), (25, 17581), (27, 17593), (28, 17602), (29, 17605), (36, 17674), (38, 17695), (43, 17758), (47, 17800), (48, 17806),

Gene: Confidence\_9 Start: 7080, Stop: 7481, Start Num: 9

Candidate Starts for Confidence\_9:

(2, 6849), (3, 6861), (4, 6888), (5, 6927), (Start: 8 @7071 has 19 MA's), (Start: 9 @7080 has 18 MA's), (16, 7161), (21, 7212), (23, 7242), (26, 7263), (27, 7266), (28, 7275), (33, 7332), (34, 7338), (40, 7398), (46, 7464), (47, 7470),

Gene: Corazon\_39 Start: 17351, Stop: 17776, Start Num: 8

Candidate Starts for Corazon\_39:

(7, 17348), (Start: 8 @17351 has 19 MA's), (Start: 12 @17375 has 1 MA's), (18, 17468), (25, 17534), (27, 17546), (28, 17555), (29, 17558), (36, 17627), (38, 17648), (43, 17711), (47, 17753), (48, 17759),

Gene: DS6A\_12 Start: 9306, Stop: 9719, Start Num: 9

Candidate Starts for DS6A\_12:

(Start: 9 @9306 has 18 MA's), (Start: 10 @9312 has 4 MA's), (13, 9339), (14, 9351), (15, 9381), (18, 9411), (19, 9414), (24, 9477), (25, 9480), (26, 9489), (27, 9492), (32, 9534), (33, 9546), (35, 9555), (39, 9597), (40, 9609), (43, 9639), (44, 9660), (45, 9675),

Gene: EMSquaredA\_9 Start: 7086, Stop: 7487, Start Num: 9

Candidate Starts for EMSquaredA\_9:

(2, 6855), (3, 6867), (4, 6894), (5, 6933), (Start: 8 @7077 has 19 MA's), (Start: 9 @7086 has 18 MA's), (16, 7167), (21, 7218), (23, 7248), (26, 7269), (27, 7272), (28, 7281), (34, 7344), (40, 7404), (46, 7470),

Gene: EnalisNailo\_9 Start: 7086, Stop: 7487, Start Num: 9

Candidate Starts for EnalisNailo\_9:

(2, 6855), (3, 6867), (4, 6894), (5, 6933), (Start: 8 @7077 has 19 MA's), (Start: 9 @7086 has 18 MA's), (16, 7167), (21, 7218), (23, 7248), (26, 7269), (27, 7272), (28, 7281), (34, 7344), (40, 7404), (46, 7470),

Gene: FeliMaine\_43 Start: 17399, Stop: 17824, Start Num: 8

Candidate Starts for FeliMaine\_43:

(7, 17396), (Start: 8 @17399 has 19 MA's), (Start: 12 @17423 has 1 MA's), (18, 17516), (25, 17582), (27, 17594), (28, 17603), (29, 17606), (36, 17675), (38, 17696), (43, 17759), (47, 17801), (48, 17807),

Gene: Floral\_9 Start: 7086, Stop: 7487, Start Num: 9

Candidate Starts for Floral\_9:

(2, 6855), (3, 6867), (4, 6894), (5, 6933), (Start: 8 @7077 has 19 MA's), (Start: 9 @7086 has 18 MA's), (16, 7167), (21, 7218), (23, 7248), (26, 7269), (27, 7272), (28, 7281), (34, 7344), (40, 7404), (46, 7470),

Gene: Gattaca\_40 Start: 16578, Stop: 17003, Start Num: 8

Candidate Starts for Gattaca\_40:

(7, 16575), (Start: 8 @16578 has 19 MA's), (Start: 12 @16602 has 1 MA's), (18, 16695), (25, 16761), (27, 16773), (28, 16782), (29, 16785), (36, 16854), (38, 16875), (43, 16938), (47, 16980), (48, 16986),

Gene: GoongGoong\_40 Start: 16618, Stop: 17043, Start Num: 8

Candidate Starts for GoongGoong\_40:

(7, 16615), (Start: 8 @16618 has 19 MA's), (Start: 12 @16642 has 1 MA's), (18, 16735), (25, 16801), (27, 16813), (28, 16822), (29, 16825), (36, 16894), (38, 16915), (43, 16978), (47, 17020), (48, 17026),

Gene: Huphleuff\_43 Start: 17203, Stop: 17628, Start Num: 8

Candidate Starts for Huphleuff\_43:

(7, 17200), (Start: 8 @17203 has 19 MA's), (Start: 12 @17227 has 1 MA's), (18, 17320), (25, 17386), (27, 17398), (28, 17407), (29, 17410), (36, 17479), (38, 17500), (43, 17563), (47, 17605), (48, 17611),

Gene: Jablanski\_9 Start: 6933, Stop: 7334, Start Num: 9

Candidate Starts for Jablanski\_9:

(2, 6702), (3, 6714), (4, 6741), (5, 6780), (Start: 8 @6924 has 19 MA's), (Start: 9 @6933 has 18 MA's), (16, 7014), (21, 7065), (23, 7095), (26, 7116), (27, 7119), (33, 7185), (34, 7191), (40, 7251), (46, 7317),

Gene: JoieB\_42 Start: 17422, Stop: 17847, Start Num: 8

Candidate Starts for JoieB\_42:

(7, 17419), (Start: 8 @17422 has 19 MA's), (Start: 12 @17446 has 1 MA's), (18, 17539), (25, 17605), (27, 17617), (28, 17626), (29, 17629), (36, 17698), (38, 17719), (43, 17782), (47, 17824), (48, 17830),

Gene: Lilas\_9 Start: 7086, Stop: 7487, Start Num: 9

Candidate Starts for Lilas\_9:

(2, 6855), (3, 6867), (4, 6894), (5, 6933), (Start: 8 @7077 has 19 MA's), (Start: 9 @7086 has 18 MA's), (16, 7167), (21, 7218), (23, 7248), (26, 7269), (27, 7272), (28, 7281), (34, 7344), (40, 7404), (46, 7470),

Gene: Lilbit\_40 Start: 17399, Stop: 17824, Start Num: 8

Candidate Starts for Lilbit\_40:

(7, 17396), (Start: 8 @17399 has 19 MA's), (Start: 12 @17423 has 1 MA's), (18, 17516), (25, 17582), (27, 17594), (28, 17603), (29, 17606), (36, 17675), (38, 17696), (43, 17759), (47, 17801), (48, 17807),

Gene: LittleLaf\_41 Start: 17128, Stop: 17553, Start Num: 8

Candidate Starts for LittleLaf\_41:

(7, 17125), (Start: 8 @17128 has 19 MA's), (Start: 12 @17152 has 1 MA's), (18, 17245), (25, 17311), (27, 17323), (28, 17332), (29, 17335), (36, 17404), (38, 17425), (43, 17488), (47, 17530), (48, 17536),

Gene: LonelyBoi\_9 Start: 6933, Stop: 7334, Start Num: 9

Candidate Starts for LonelyBoi\_9:

(2, 6702), (3, 6714), (5, 6780), (Start: 8 @6924 has 19 MA's), (Start: 9 @6933 has 18 MA's), (16, 7014), (21, 7065), (23, 7095), (26, 7116), (27, 7119), (33, 7185), (34, 7191), (40, 7251), (46, 7317),

Gene: LunaStella\_8 Start: 6532, Stop: 6906, Start Num: 10

Candidate Starts for LunaStella\_8:

(Start: 10 @6532 has 4 MA's), (13, 6559), (22, 6664), (23, 6688), (24, 6697), (29, 6724), (32, 6760), (40, 6829), (41, 6835), (42, 6844), (43, 6859),

Gene: Marteena\_9 Start: 7086, Stop: 7487, Start Num: 9

Candidate Starts for Marteena\_9:

(2, 6855), (3, 6867), (4, 6894), (5, 6933), (Start: 8 @7077 has 19 MA's), (Start: 9 @7086 has 18 MA's), (16, 7167), (21, 7218), (23, 7248), (26, 7269), (27, 7272), (28, 7281), (34, 7344), (40, 7404), (46, 7470),

Gene: Marvin\_39 Start: 17422, Stop: 17823, Start Num: 12

Candidate Starts for Marvin\_39:

(7, 17395), (Start: 8 @17398 has 19 MA's), (Start: 12 @17422 has 1 MA's), (18, 17515), (25, 17581), (27, 17593), (28, 17602), (29, 17605), (36, 17674), (38, 17695), (43, 17758), (47, 17800), (48, 17806),

Gene: MosMoris\_39 Start: 16578, Stop: 17003, Start Num: 8

Candidate Starts for MosMoris\_39:

(7, 16575), (Start: 8 @16578 has 19 MA's), (Start: 12 @16602 has 1 MA's), (18, 16695), (25, 16761), (27, 16773), (28, 16782), (29, 16785), (36, 16854), (38, 16875), (43, 16938), (47, 16980), (48, 16986),

Gene: Poise\_41 Start: 16716, Stop: 17141, Start Num: 8

Candidate Starts for Poise\_41:

(7, 16713), (Start: 8 @16716 has 19 MA's), (Start: 12 @16740 has 1 MA's), (18, 16833), (25, 16899), (27, 16911), (28, 16920), (29, 16923), (36, 16992), (38, 17013), (43, 17076), (47, 17118), (48, 17124),

Gene: Pollux\_9 Start: 7086, Stop: 7487, Start Num: 9

Candidate Starts for Pollux\_9:

(2, 6855), (3, 6867), (4, 6894), (5, 6933), (Start: 8 @7077 has 19 MA's), (Start: 9 @7086 has 18 MA's), (16, 7167), (21, 7218), (23, 7248), (26, 7269), (27, 7272), (28, 7281), (34, 7344), (40, 7404), (46, 7470),

Gene: Posh\_9 Start: 7080, Stop: 7481, Start Num: 9

Candidate Starts for Posh\_9:

(1, 6768), (2, 6849), (3, 6861), (4, 6888), (5, 6927), (Start: 8 @7071 has 19 MA's), (Start: 9 @7080 has 18 MA's), (16, 7161), (21, 7212), (23, 7242), (26, 7263), (27, 7266), (33, 7332), (34, 7338), (40, 7398), (46, 7464),

Gene: Pringar\_41 Start: 17028, Stop: 17453, Start Num: 8

Candidate Starts for Pringar\_41:

(7, 17025), (Start: 8 @17028 has 19 MA's), (Start: 12 @17052 has 1 MA's), (18, 17145), (27, 17223), (28, 17232), (29, 17235), (36, 17304), (38, 17325), (48, 17436),

Gene: Pytheas\_9 Start: 6933, Stop: 7334, Start Num: 9

Candidate Starts for Pytheas\_9:

(2, 6702), (3, 6714), (4, 6741), (5, 6780), (Start: 8 @6924 has 19 MA's), (Start: 9 @6933 has 18 MA's), (16, 7014), (21, 7065), (23, 7095), (26, 7116), (27, 7119), (33, 7185), (34, 7191), (40, 7251), (46, 7317),

Gene: Raela\_41 Start: 17271, Stop: 17696, Start Num: 8

Candidate Starts for Raela\_41:

(7, 17268), (Start: 8 @17271 has 19 MA's), (Start: 12 @17295 has 1 MA's), (18, 17388), (25, 17454), (27, 17466), (28, 17475), (29, 17478), (36, 17547), (38, 17568), (43, 17631), (47, 17673), (48, 17679),

Gene: RedRaider77\_41 Start: 17172, Stop: 17597, Start Num: 8

Candidate Starts for RedRaider77\_41:

(7, 17169), (Start: 8 @17172 has 19 MA's), (Start: 12 @17196 has 1 MA's), (18, 17289), (25, 17355), (27, 17367), (28, 17376), (29, 17379), (36, 17448), (38, 17469), (43, 17532), (47, 17574), (48, 17580),

Gene: Renaud18\_8 Start: 6412, Stop: 6783, Start Num: 10

Candidate Starts for Renaud18\_8:

(Start: 10 @6412 has 4 MA's), (13, 6436), (22, 6541), (23, 6565), (24, 6574), (29, 6601), (32, 6637), (40, 6706), (41, 6712), (42, 6721), (43, 6736),

Gene: TChen\_8 Start: 6532, Stop: 6906, Start Num: 10

Candidate Starts for TChen\_8:

(Start: 10 @6532 has 4 MA's), (13, 6559), (22, 6664), (23, 6688), (24, 6697), (29, 6724), (32, 6760), (40, 6829), (41, 6835), (42, 6844), (43, 6859),

Gene: Tesla\_40 Start: 17021, Stop: 17446, Start Num: 8

Candidate Starts for Tesla\_40:

(7, 17018), (Start: 8 @17021 has 19 MA's), (Start: 12 @17045 has 1 MA's), (18, 17138), (25, 17204), (27, 17216), (28, 17225), (29, 17228), (36, 17297), (38, 17318), (43, 17381), (47, 17423), (48, 17429),

Gene: ThetaBob\_8 Start: 6412, Stop: 6786, Start Num: 10

Candidate Starts for ThetaBob\_8:

(Start: 10 @6412 has 4 MA's), (13, 6439), (22, 6544), (23, 6568), (24, 6577), (29, 6604), (32, 6640), (40, 6709), (41, 6715), (42, 6724), (43, 6739),

Gene: Toron\_8 Start: 6532, Stop: 6906, Start Num: 10

Candidate Starts for Toron\_8:

(Start: 10 @6532 has 4 MA's), (13, 6559), (22, 6664), (23, 6688), (24, 6697), (29, 6724), (32, 6760), (40, 6829), (41, 6835), (42, 6844),

Gene: VasuNzinga\_41 Start: 16605, Stop: 17030, Start Num: 8

Candidate Starts for VasuNzinga\_41:

(7, 16602), (Start: 8 @16605 has 19 MA's), (Start: 12 @16629 has 1 MA's), (18, 16722), (25, 16788), (27, 16800), (28, 16809), (29, 16812), (36, 16881), (38, 16902), (43, 16965), (47, 17007), (48, 17013),

Gene: Wrigley\_9 Start: 6930, Stop: 7331, Start Num: 9

Candidate Starts for Wrigley\_9:

(2, 6699), (3, 6711), (5, 6777), (Start: 8 @6921 has 19 MA's), (Start: 9 @6930 has 18 MA's), (16, 7011), (21, 7062), (23, 7092), (26, 7113), (27, 7116), (34, 7188), (40, 7248), (46, 7314),