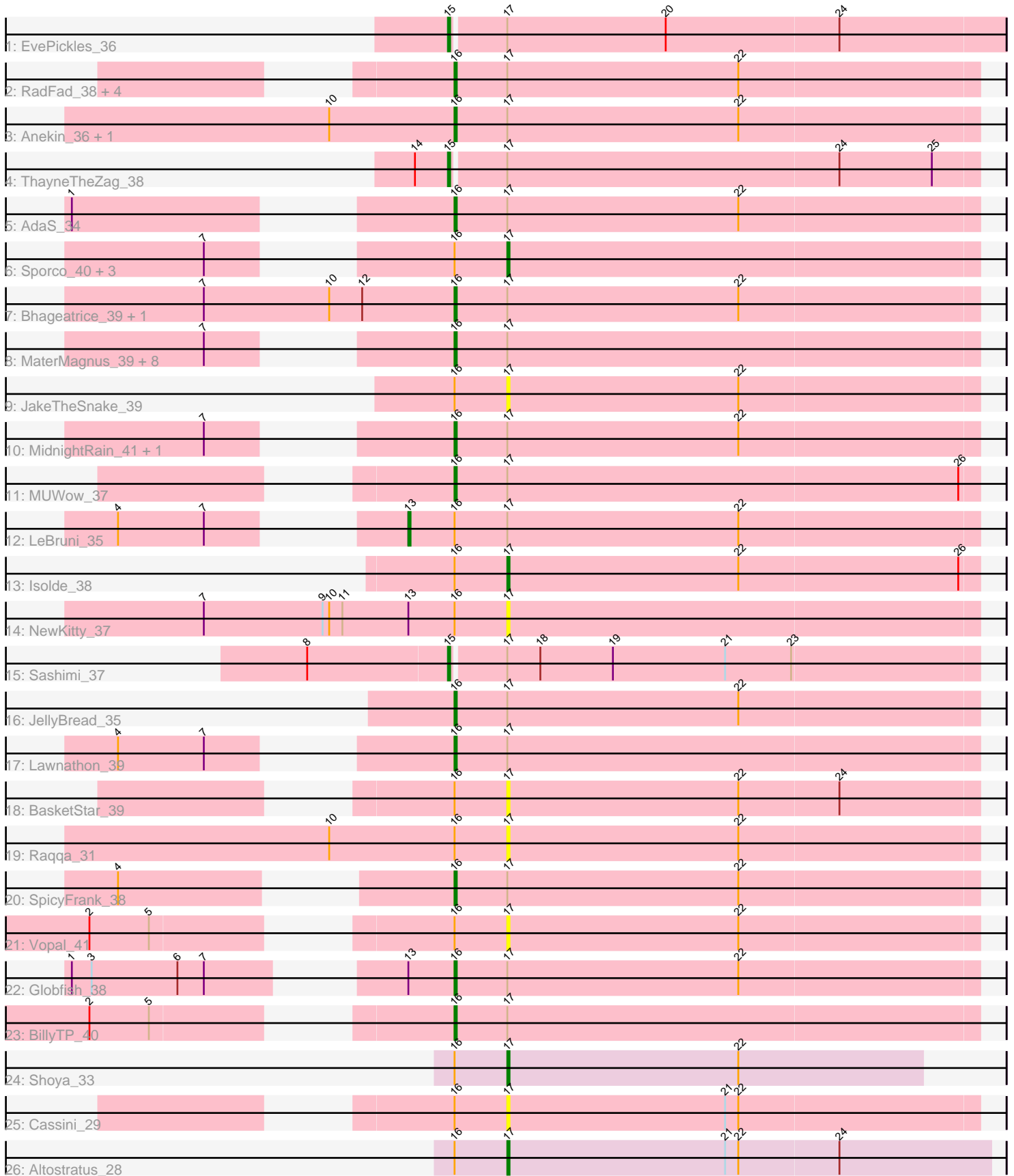


# Pham 305125



Note: Tracks are now grouped by subcluster and scaled. Switching in subcluster is indicated by changes in track color. Track scale is now set by default to display the region 30 bp upstream of start 1 to 30 bp downstream of the last possible start. If this default region is judged to be packed too tightly with annotated starts, the track will be further scaled to only show that region of the ORF with annotated starts. This action will be indicated by adding "Zoomed" to the title. For starts, yellow indicates the location of called starts comprised solely of Glimmer/GeneMark auto-annotations, green indicates the location of called starts with at least 1 manual gene annotation.

## Pham 305125 Report

This analysis was run 06/08/26 on database version 649.

Pham number 305125 has 44 members, 11 are drafts.

Phages represented in each track:

- Track 1 : EvePickles\_36
- Track 2 : RadFad\_38, Windest\_38, Hillester\_38, Phrank15\_37, SonDevVon\_38
- Track 3 : Anekin\_36, MurphyJoseph\_35
- Track 4 : ThayneTheZag\_38
- Track 5 : AdaS\_34
- Track 6 : Sporco\_40, Faja\_38, Auxilium\_37, Mapleville\_37
- Track 7 : Bhageatrice\_39, DarwinJr\_40
- Track 8 : MaterMagnus\_39, Raphaella\_39, Gorpy\_40, Richie\_39, Aikyam\_36, Kabloowy\_39, BenchScraper\_38, YoungHarleezy\_39, Sakai\_39
- Track 9 : JakeTheSnake\_39
- Track 10 : MidnightRain\_41, CookieBear\_39
- Track 11 : MUWow\_37
- Track 12 : LeBruni\_35
- Track 13 : Isolde\_38
- Track 14 : NewKitty\_37
- Track 15 : Sashimi\_37
- Track 16 : JellyBread\_35
- Track 17 : Lawnathon\_39
- Track 18 : BasketStar\_39
- Track 19 : Raqqa\_31
- Track 20 : SpicyFrank\_38
- Track 21 : Vopal\_41
- Track 22 : Globfish\_38
- Track 23 : BillyTP\_40
- Track 24 : Shoya\_33
- Track 25 : Cassini\_29
- Track 26 : Altostratus\_28

### ***Summary of Final Annotations (See graph section above for start numbers):***

The start number called the most often in the published annotations is 16, it was called in 23 of the 33 non-draft genes in the pham.

Genes that call this "Most Annotated" start:

- AdaS\_34, Aikyam\_36, Anekin\_36, BenchScraper\_38, Bhageatrice\_39, BillyTP\_40, CookieBear\_39, DarwinJr\_40, Globfish\_38, Gorpy\_40, Hillester\_38, JellyBread\_35, Kabloowy\_39, Lawnathon\_39, MUWow\_37, MaterMagnus\_39, MidnightRain\_41, MurphyJoseph\_35, Phrank15\_37, RadFad\_38, Raphaella\_39, Richie\_39, Sakai\_39, SonDevVon\_38, SpicyFrank\_38, Windest\_38, YoungHarleezy\_39,

Genes that have the "Most Annotated" start but do not call it:

- Altostratus\_28, Auxilium\_37, BasketStar\_39, Cassini\_29, Faja\_38, Isolde\_38, JakeTheSnake\_39, LeBruni\_35, Mapleville\_37, NewKitty\_37, Raqqa\_31, Shoya\_33, Sporco\_40, Vopal\_41,

Genes that do not have the "Most Annotated" start:

- EvePickles\_36, Sashimi\_37, ThayneTheZag\_38,

### Summary by start number:

Start 13:

- Found in 3 of 44 ( 6.8% ) of genes in pham
- Manual Annotations of this start: 1 of 33
- Called 33.3% of time when present
- Phage (with cluster) where this start called: LeBruni\_35 (AY),

Start 15:

- Found in 3 of 44 ( 6.8% ) of genes in pham
- Manual Annotations of this start: 3 of 33
- Called 100.0% of time when present
- Phage (with cluster) where this start called: EvePickles\_36 (AY), Sashimi\_37 (AY), ThayneTheZag\_38 (AY),

Start 16:

- Found in 41 of 44 ( 93.2% ) of genes in pham
- Manual Annotations of this start: 23 of 33
- Called 65.9% of time when present
- Phage (with cluster) where this start called: AdaS\_34 (AY), Aikyam\_36 (AY), Anekin\_36 (AY), BenchScraper\_38 (AY), Bhageatrice\_39 (AY), BillyTP\_40 (AY), CookieBear\_39 (AY), DarwinJr\_40 (AY), Globfish\_38 (AY), Gorpy\_40 (AY), Hillester\_38 (AY), JellyBread\_35 (AY), Kabloowy\_39 (AY), Lawnathon\_39 (AY), MUWow\_37 (AY), MaterMagnus\_39 (AY), MidnightRain\_41 (AY), MurphyJoseph\_35 (AY), Phrank15\_37 (AY), RadFad\_38 (AY), Raphaella\_39 (AY), Richie\_39 (AY), Sakai\_39 (AY), SonDevVon\_38 (AY), SpicyFrank\_38 (AY), Windest\_38 (AY), YoungHarleezy\_39 (AY),

Start 17:

- Found in 44 of 44 ( 100.0% ) of genes in pham
- Manual Annotations of this start: 6 of 33
- Called 29.5% of time when present
- Phage (with cluster) where this start called: Altostratus\_28 (FS), Auxilium\_37 (AY), BasketStar\_39 (AY), Cassini\_29 (FN), Faja\_38 (AY), Isolde\_38 (AY), JakeTheSnake\_39 (AY), Mapleville\_37 (AY), NewKitty\_37 (AY), Raqqa\_31 (AY), Shoya\_33 (FB), Sporco\_40 (AY), Vopal\_41 (AY),

### Summary by clusters:

There are 4 clusters represented in this pham: AY, FB, FS, FN,

Info for manual annotations of cluster AY:

- Start number 13 was manually annotated 1 time for cluster AY.
- Start number 15 was manually annotated 3 times for cluster AY.
- Start number 16 was manually annotated 23 times for cluster AY.
- Start number 17 was manually annotated 4 times for cluster AY.

Info for manual annotations of cluster FB:

- Start number 17 was manually annotated 1 time for cluster FB.

Info for manual annotations of cluster FS:

- Start number 17 was manually annotated 1 time for cluster FS.

**Gene Information:**

Gene: AdaS\_34 Start: 24505, Stop: 24269, Start Num: 16

Candidate Starts for AdaS\_34:

(1, 24634), (Start: 16 @24505 has 23 MA's), (Start: 17 @24481 has 6 MA's), (22, 24376),

Gene: Aikyam\_36 Start: 24436, Stop: 24200, Start Num: 16

Candidate Starts for Aikyam\_36:

(7, 24505), (Start: 16 @24436 has 23 MA's), (Start: 17 @24412 has 6 MA's),

Gene: Altostratus\_28 Start: 22209, Stop: 21991, Start Num: 17

Candidate Starts for Altostratus\_28:

(Start: 16 @22233 has 23 MA's), (Start: 17 @22209 has 6 MA's), (21, 22110), (22, 22104), (24, 22059),

Gene: Anekin\_36 Start: 25783, Stop: 25547, Start Num: 16

Candidate Starts for Anekin\_36:

(10, 25840), (Start: 16 @25783 has 23 MA's), (Start: 17 @25759 has 6 MA's), (22, 25654),

Gene: Auxilium\_37 Start: 24114, Stop: 23902, Start Num: 17

Candidate Starts for Auxilium\_37:

(7, 24207), (Start: 16 @24138 has 23 MA's), (Start: 17 @24114 has 6 MA's),

Gene: BasketStar\_39 Start: 26475, Stop: 26263, Start Num: 17

Candidate Starts for BasketStar\_39:

(Start: 16 @26499 has 23 MA's), (Start: 17 @26475 has 6 MA's), (22, 26370), (24, 26325),

Gene: BenchScraper\_38 Start: 26096, Stop: 25860, Start Num: 16

Candidate Starts for BenchScraper\_38:

(7, 26165), (Start: 16 @26096 has 23 MA's), (Start: 17 @26072 has 6 MA's),

Gene: Bhageatrice\_39 Start: 27925, Stop: 27689, Start Num: 16

Candidate Starts for Bhageatrice\_39:

(7, 28039), (10, 27982), (12, 27967), (Start: 16 @27925 has 23 MA's), (Start: 17 @27901 has 6 MA's), (22, 27796),

Gene: BillyTP\_40 Start: 27334, Stop: 27098, Start Num: 16

Candidate Starts for BillyTP\_40:  
(2, 27457), (5, 27430), (Start: 16 @27334 has 23 MA's), (Start: 17 @27310 has 6 MA's),

Gene: Cassini\_29 Start: 23499, Stop: 23287, Start Num: 17  
Candidate Starts for Cassini\_29:  
(Start: 16 @23523 has 23 MA's), (Start: 17 @23499 has 6 MA's), (21, 23400), (22, 23394),

Gene: CookieBear\_39 Start: 26598, Stop: 26362, Start Num: 16  
Candidate Starts for CookieBear\_39:  
(7, 26667), (Start: 16 @26598 has 23 MA's), (Start: 17 @26574 has 6 MA's), (22, 26469),

Gene: DarwinJr\_40 Start: 27495, Stop: 27259, Start Num: 16  
Candidate Starts for DarwinJr\_40:  
(7, 27609), (10, 27552), (12, 27537), (Start: 16 @27495 has 23 MA's), (Start: 17 @27471 has 6 MA's),  
(22, 27366),

Gene: EvePickles\_36 Start: 27264, Stop: 27016, Start Num: 15  
Candidate Starts for EvePickles\_36:  
(Start: 15 @27264 has 3 MA's), (Start: 17 @27240 has 6 MA's), (20, 27168), (24, 27090),

Gene: Faja\_38 Start: 27848, Stop: 27636, Start Num: 17  
Candidate Starts for Faja\_38:  
(7, 27941), (Start: 16 @27872 has 23 MA's), (Start: 17 @27848 has 6 MA's),

Gene: Globfish\_38 Start: 26321, Stop: 26085, Start Num: 16  
Candidate Starts for Globfish\_38:  
(1, 26456), (3, 26447), (6, 26408), (7, 26396), (Start: 13 @26342 has 1 MA's), (Start: 16 @26321 has  
23 MA's), (Start: 17 @26297 has 6 MA's), (22, 26192),

Gene: Gorpy\_40 Start: 27830, Stop: 27594, Start Num: 16  
Candidate Starts for Gorpy\_40:  
(7, 27899), (Start: 16 @27830 has 23 MA's), (Start: 17 @27806 has 6 MA's),

Gene: Hillester\_38 Start: 26084, Stop: 25848, Start Num: 16  
Candidate Starts for Hillester\_38:  
(Start: 16 @26084 has 23 MA's), (Start: 17 @26060 has 6 MA's), (22, 25955),

Gene: Isolde\_38 Start: 25826, Stop: 25614, Start Num: 17  
Candidate Starts for Isolde\_38:  
(Start: 16 @25850 has 23 MA's), (Start: 17 @25826 has 6 MA's), (22, 25721), (26, 25622),

Gene: JakeTheSnake\_39 Start: 26721, Stop: 26509, Start Num: 17  
Candidate Starts for JakeTheSnake\_39:  
(Start: 16 @26745 has 23 MA's), (Start: 17 @26721 has 6 MA's), (22, 26616),

Gene: JellyBread\_35 Start: 25035, Stop: 24799, Start Num: 16  
Candidate Starts for JellyBread\_35:  
(Start: 16 @25035 has 23 MA's), (Start: 17 @25011 has 6 MA's), (22, 24906),

Gene: Kabloowy\_39 Start: 26778, Stop: 26542, Start Num: 16  
Candidate Starts for Kabloowy\_39:  
(7, 26847), (Start: 16 @26778 has 23 MA's), (Start: 17 @26754 has 6 MA's),

Gene: Lawnathon\_39 Start: 26452, Stop: 26216, Start Num: 16  
Candidate Starts for Lawnathon\_39:  
(4, 26560), (7, 26521), (Start: 16 @26452 has 23 MA's), (Start: 17 @26428 has 6 MA's),

Gene: LeBruni\_35 Start: 25857, Stop: 25600, Start Num: 13  
Candidate Starts for LeBruni\_35:  
(4, 25944), (7, 25905), (Start: 13 @25857 has 1 MA's), (Start: 16 @25836 has 23 MA's), (Start: 17 @25812 has 6 MA's), (22, 25707),

Gene: MUWow\_37 Start: 26106, Stop: 25870, Start Num: 16  
Candidate Starts for MUWow\_37:  
(Start: 16 @26106 has 23 MA's), (Start: 17 @26082 has 6 MA's), (26, 25878),

Gene: Mapleville\_37 Start: 26507, Stop: 26295, Start Num: 17  
Candidate Starts for Mapleville\_37:  
(7, 26600), (Start: 16 @26531 has 23 MA's), (Start: 17 @26507 has 6 MA's),

Gene: MaterMagnus\_39 Start: 26608, Stop: 26372, Start Num: 16  
Candidate Starts for MaterMagnus\_39:  
(7, 26677), (Start: 16 @26608 has 23 MA's), (Start: 17 @26584 has 6 MA's),

Gene: MidnightRain\_41 Start: 27394, Stop: 27158, Start Num: 16  
Candidate Starts for MidnightRain\_41:  
(7, 27463), (Start: 16 @27394 has 23 MA's), (Start: 17 @27370 has 6 MA's), (22, 27265),

Gene: MurphyJoseph\_35 Start: 25336, Stop: 25100, Start Num: 16  
Candidate Starts for MurphyJoseph\_35:  
(10, 25393), (Start: 16 @25336 has 23 MA's), (Start: 17 @25312 has 6 MA's), (22, 25207),

Gene: NewKitty\_37 Start: 25662, Stop: 25450, Start Num: 17  
Candidate Starts for NewKitty\_37:  
(7, 25800), (9, 25746), (10, 25743), (11, 25737), (Start: 13 @25707 has 1 MA's), (Start: 16 @25686 has 23 MA's), (Start: 17 @25662 has 6 MA's),

Gene: Phrank15\_37 Start: 25445, Stop: 25209, Start Num: 16  
Candidate Starts for Phrank15\_37:  
(Start: 16 @25445 has 23 MA's), (Start: 17 @25421 has 6 MA's), (22, 25316),

Gene: RadFad\_38 Start: 26084, Stop: 25848, Start Num: 16  
Candidate Starts for RadFad\_38:  
(Start: 16 @26084 has 23 MA's), (Start: 17 @26060 has 6 MA's), (22, 25955),

Gene: Raphaella\_39 Start: 26532, Stop: 26296, Start Num: 16  
Candidate Starts for Raphaella\_39:  
(7, 26601), (Start: 16 @26532 has 23 MA's), (Start: 17 @26508 has 6 MA's),

Gene: Raqqa\_31 Start: 23602, Stop: 23390, Start Num: 17  
Candidate Starts for Raqqa\_31:  
(10, 23683), (Start: 16 @23626 has 23 MA's), (Start: 17 @23602 has 6 MA's), (22, 23497),

Gene: Richie\_39 Start: 26613, Stop: 26377, Start Num: 16  
Candidate Starts for Richie\_39:  
(7, 26682), (Start: 16 @26613 has 23 MA's), (Start: 17 @26589 has 6 MA's),

Gene: Sakai\_39 Start: 26541, Stop: 26305, Start Num: 16  
Candidate Starts for Sakai\_39:  
(7, 26610), (Start: 16 @26541 has 23 MA's), (Start: 17 @26517 has 6 MA's),

Gene: Sashimi\_37 Start: 27401, Stop: 27165, Start Num: 15  
Candidate Starts for Sashimi\_37:  
(8, 27464), (Start: 15 @27401 has 3 MA's), (Start: 17 @27377 has 6 MA's), (18, 27362), (19, 27329),  
(21, 27278), (23, 27248),

Gene: Shoya\_33 Start: 23256, Stop: 23068, Start Num: 17  
Candidate Starts for Shoya\_33:  
(Start: 16 @23280 has 23 MA's), (Start: 17 @23256 has 6 MA's), (22, 23151),

Gene: SonDevVon\_38 Start: 26429, Stop: 26193, Start Num: 16  
Candidate Starts for SonDevVon\_38:  
(Start: 16 @26429 has 23 MA's), (Start: 17 @26405 has 6 MA's), (22, 26300),

Gene: SpicyFrank\_38 Start: 26316, Stop: 26080, Start Num: 16  
Candidate Starts for SpicyFrank\_38:  
(4, 26424), (Start: 16 @26316 has 23 MA's), (Start: 17 @26292 has 6 MA's), (22, 26187),

Gene: Sporco\_40 Start: 26565, Stop: 26353, Start Num: 17  
Candidate Starts for Sporco\_40:  
(7, 26658), (Start: 16 @26589 has 23 MA's), (Start: 17 @26565 has 6 MA's),

Gene: ThayneTheZag\_38 Start: 26235, Stop: 25999, Start Num: 15  
Candidate Starts for ThayneTheZag\_38:  
(14, 26250), (Start: 15 @26235 has 3 MA's), (Start: 17 @26211 has 6 MA's), (24, 26061), (25, 26019),

Gene: Vopal\_41 Start: 28879, Stop: 28667, Start Num: 17  
Candidate Starts for Vopal\_41:  
(2, 29026), (5, 28999), (Start: 16 @28903 has 23 MA's), (Start: 17 @28879 has 6 MA's), (22, 28774),

Gene: Windest\_38 Start: 24922, Stop: 24686, Start Num: 16  
Candidate Starts for Windest\_38:  
(Start: 16 @24922 has 23 MA's), (Start: 17 @24898 has 6 MA's), (22, 24793),

Gene: YoungHarleezy\_39 Start: 26611, Stop: 26375, Start Num: 16  
Candidate Starts for YoungHarleezy\_39:  
(7, 26680), (Start: 16 @26611 has 23 MA's), (Start: 17 @26587 has 6 MA's),