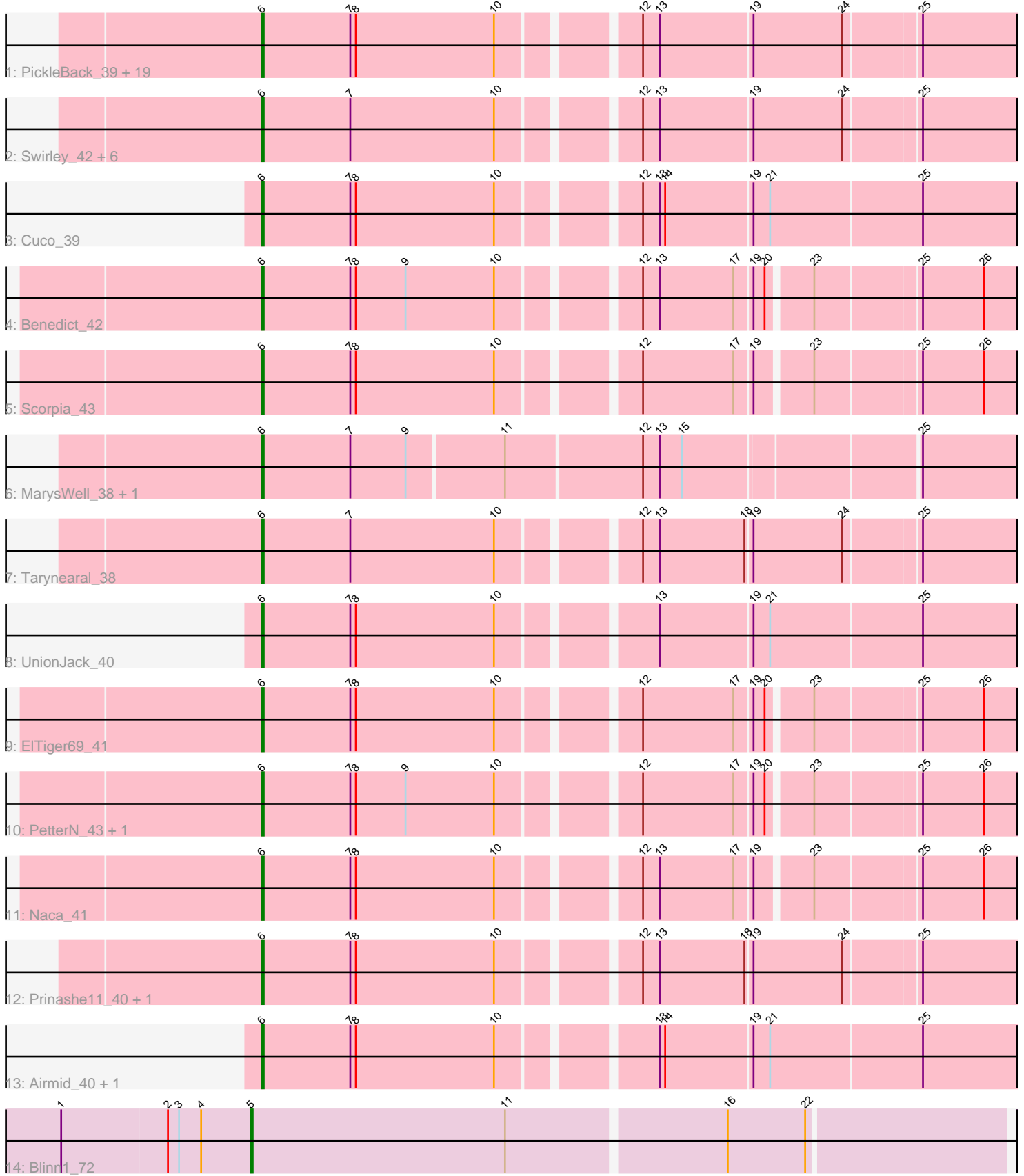


Pham 305126



Note: Tracks are now grouped by subcluster and scaled. Switching in subcluster is indicated by changes in track color. Track scale is now set by default to display the region 30 bp upstream of start 1 to 30 bp downstream of the last possible start. If this default region is judged to be packed too tightly with annotated starts, the track will be further scaled to only show that region of the ORF with annotated starts. This action will be indicated by adding "Zoomed" to the title. For starts, yellow indicates the location of called starts comprised solely of Glimmer/GeneMark auto-annotations, green indicates the location of called starts with at least 1 manual gene annotation.

Pham 305126 Report

This analysis was run 06/08/26 on database version 649.

Pham number 305126 has 43 members, 3 are drafts.

Phages represented in each track:

- Track 1 : PickleBack_39, Theia_37, Conspiracy_39, Jovo_39, Discoknowium_38, Dublin_38, Zolita_40, ForGetIt_39, Twigg_40, Coog_39, Midas2_39, Archetta_39, Ghoulboy_41, AgentM_38, Tiger_38, Aragog_38, Lev2_39, Milcery_40, Phlorence_38, SydNat_41
- Track 2 : Swirley_42, Micasa_41, LittleCherry_40, Florence1_38, HuhtaEnerson15_40, Bonamassa_40, Florence4_39
- Track 3 : Cuco_39
- Track 4 : Benedict_42
- Track 5 : Scorpia_43
- Track 6 : MarysWell_38, Bluefalcon_38
- Track 7 : Tarynearal_38
- Track 8 : UnionJack_40
- Track 9 : EITiger69_41
- Track 10 : PetterN_43, Chadwick_43
- Track 11 : Naca_41
- Track 12 : Prinashe11_40, George_39
- Track 13 : Airmid_40, Jabiru_40
- Track 14 : Blinn1_72

Summary of Final Annotations (See graph section above for start numbers):

The start number called the most often in the published annotations is 6, it was called in 39 of the 40 non-draft genes in the pham.

Genes that call this "Most Annotated" start:

- AgentM_38, Airmid_40, Aragog_38, Archetta_39, Benedict_42, Bluefalcon_38, Bonamassa_40, Chadwick_43, Conspiracy_39, Coog_39, Cuco_39, Discoknowium_38, Dublin_38, EITiger69_41, Florence1_38, Florence4_39, ForGetIt_39, George_39, Ghoulboy_41, HuhtaEnerson15_40, Jabiru_40, Jovo_39, Lev2_39, LittleCherry_40, MarysWell_38, Micasa_41, Midas2_39, Milcery_40, Naca_41, PetterN_43, Phlorence_38, PickleBack_39, Prinashe11_40, Scorpia_43, Swirley_42, SydNat_41, Tarynearal_38, Theia_37, Tiger_38, Twigg_40, UnionJack_40, Zolita_40,

Genes that have the "Most Annotated" start but do not call it:

-

Genes that do not have the "Most Annotated" start:

- Blinn1_72,

Summary by start number:

Start 5:

- Found in 1 of 43 (2.3%) of genes in pham
- Manual Annotations of this start: 1 of 40
- Called 100.0% of time when present
- Phage (with cluster) where this start called: Blinn1_72 (A6),

Start 6:

- Found in 42 of 43 (97.7%) of genes in pham
- Manual Annotations of this start: 39 of 40
- Called 100.0% of time when present
- Phage (with cluster) where this start called: AgentM_38 (A5), Airmid_40 (A5), Aragog_38 (A5), Archetta_39 (A5), Benedict_42 (A5), Bluefalcon_38 (A5), Bonamassa_40 (A5), Chadwick_43 (A5), Conspiracy_39 (A5), Coog_39 (A5), Cuco_39 (A5), Discoknowium_38 (A5), Dublin_38 (A5), EITiger69_41 (A5), Florence1_38 (A5), Florence4_39 (A5), ForGetIt_39 (A5), George_39 (A5), Ghoulboy_41 (A5), HuhtaEnerson15_40 (A5), Jabiru_40 (A5), Jovo_39 (A5), Lev2_39 (A5), LittleCherry_40 (A5), MarysWell_38 (A5), Micasa_41 (A5), Midas2_39 (A5), Milcery_40 (A5), Naca_41 (A5), PetterN_43 (A5), Phlorence_38 (A5), PickleBack_39 (A5), Prinash11_40 (A5), Scorpia_43 (A5), Swirley_42 (A5), SydNat_41 (A5), Tarynearl_38 (A5), Theia_37 (A5), Tiger_38 (A5), Twigg_40 (A5), UnionJack_40 (A5), Zolita_40 (A5),

Summary by clusters:

There are 2 clusters represented in this pham: A5, A6,

Info for manual annotations of cluster A5:

- Start number 6 was manually annotated 39 times for cluster A5.

Info for manual annotations of cluster A6:

- Start number 5 was manually annotated 1 time for cluster A6.

Gene Information:

Gene: AgentM_38 Start: 30504, Stop: 30118, Start Num: 6

Candidate Starts for AgentM_38:

(Start: 6 @30504 has 39 MA's), (7, 30456), (8, 30453), (10, 30378), (12, 30312), (13, 30303), (19, 30255), (24, 30207), (25, 30168),

Gene: Airmid_40 Start: 30562, Stop: 30173, Start Num: 6

Candidate Starts for Airmid_40:

(Start: 6 @30562 has 39 MA's), (7, 30514), (8, 30511), (10, 30436), (13, 30361), (14, 30358), (19, 30313), (21, 30304), (25, 30223),

Gene: Aragog_38 Start: 30534, Stop: 30148, Start Num: 6

Candidate Starts for Aragog_38:

(Start: 6 @30534 has 39 MA's), (7, 30486), (8, 30483), (10, 30408), (12, 30342), (13, 30333), (19, 30285), (24, 30237), (25, 30198),

Gene: Archetta_39 Start: 31064, Stop: 30678, Start Num: 6

Candidate Starts for Archetta_39:

(Start: 6 @31064 has 39 MA's), (7, 31016), (8, 31013), (10, 30938), (12, 30872), (13, 30863), (19, 30815), (24, 30767), (25, 30728),

Gene: Benedict_42 Start: 30735, Stop: 30355, Start Num: 6

Candidate Starts for Benedict_42:

(Start: 6 @30735 has 39 MA's), (7, 30687), (8, 30684), (9, 30657), (10, 30609), (12, 30543), (13, 30534), (17, 30495), (19, 30486), (20, 30480), (23, 30459), (25, 30405), (26, 30372),

Gene: Blinn1_72 Start: 40389, Stop: 39991, Start Num: 5

Candidate Starts for Blinn1_72:

(1, 40491), (2, 40434), (3, 40428), (4, 40416), (Start: 5 @40389 has 1 MA's), (11, 40251), (16, 40137), (22, 40095),

Gene: Bluefalcon_38 Start: 31022, Stop: 30636, Start Num: 6

Candidate Starts for Bluefalcon_38:

(Start: 6 @31022 has 39 MA's), (7, 30974), (9, 30944), (11, 30893), (12, 30821), (13, 30812), (15, 30800), (25, 30686),

Gene: Bonamassa_40 Start: 31053, Stop: 30667, Start Num: 6

Candidate Starts for Bonamassa_40:

(Start: 6 @31053 has 39 MA's), (7, 31005), (10, 30927), (12, 30861), (13, 30852), (19, 30804), (24, 30756), (25, 30717),

Gene: Chadwick_43 Start: 30715, Stop: 30335, Start Num: 6

Candidate Starts for Chadwick_43:

(Start: 6 @30715 has 39 MA's), (7, 30667), (8, 30664), (9, 30637), (10, 30589), (12, 30523), (17, 30475), (19, 30466), (20, 30460), (23, 30439), (25, 30385), (26, 30352),

Gene: Conspiracy_39 Start: 30746, Stop: 30360, Start Num: 6

Candidate Starts for Conspiracy_39:

(Start: 6 @30746 has 39 MA's), (7, 30698), (8, 30695), (10, 30620), (12, 30554), (13, 30545), (19, 30497), (24, 30449), (25, 30410),

Gene: Coog_39 Start: 30844, Stop: 30458, Start Num: 6

Candidate Starts for Coog_39:

(Start: 6 @30844 has 39 MA's), (7, 30796), (8, 30793), (10, 30718), (12, 30652), (13, 30643), (19, 30595), (24, 30547), (25, 30508),

Gene: Cuco_39 Start: 30800, Stop: 30411, Start Num: 6

Candidate Starts for Cuco_39:

(Start: 6 @30800 has 39 MA's), (7, 30752), (8, 30749), (10, 30674), (12, 30608), (13, 30599), (14, 30596), (19, 30551), (21, 30542), (25, 30461),

Gene: Discoknowium_38 Start: 30543, Stop: 30157, Start Num: 6

Candidate Starts for Discoknowium_38:

(Start: 6 @30543 has 39 MA's), (7, 30495), (8, 30492), (10, 30417), (12, 30351), (13, 30342), (19, 30294), (24, 30246), (25, 30207),

Gene: Dublin_38 Start: 30565, Stop: 30179, Start Num: 6

Candidate Starts for Dublin_38:

(Start: 6 @30565 has 39 MA's), (7, 30517), (8, 30514), (10, 30439), (12, 30373), (13, 30364), (19, 30316), (24, 30268), (25, 30229),

Gene: EITiger69_41 Start: 30732, Stop: 30352, Start Num: 6

Candidate Starts for EITiger69_41:

(Start: 6 @30732 has 39 MA's), (7, 30684), (8, 30681), (10, 30606), (12, 30540), (17, 30492), (19, 30483), (20, 30477), (23, 30456), (25, 30402), (26, 30369),

Gene: Florence1_38 Start: 30418, Stop: 30032, Start Num: 6

Candidate Starts for Florence1_38:

(Start: 6 @30418 has 39 MA's), (7, 30370), (10, 30292), (12, 30226), (13, 30217), (19, 30169), (24, 30121), (25, 30082),

Gene: Florence4_39 Start: 30418, Stop: 30032, Start Num: 6

Candidate Starts for Florence4_39:

(Start: 6 @30418 has 39 MA's), (7, 30370), (10, 30292), (12, 30226), (13, 30217), (19, 30169), (24, 30121), (25, 30082),

Gene: ForGetIt_39 Start: 30771, Stop: 30385, Start Num: 6

Candidate Starts for ForGetIt_39:

(Start: 6 @30771 has 39 MA's), (7, 30723), (8, 30720), (10, 30645), (12, 30579), (13, 30570), (19, 30522), (24, 30474), (25, 30435),

Gene: George_39 Start: 30995, Stop: 30609, Start Num: 6

Candidate Starts for George_39:

(Start: 6 @30995 has 39 MA's), (7, 30947), (8, 30944), (10, 30869), (12, 30803), (13, 30794), (18, 30749), (19, 30746), (24, 30698), (25, 30659),

Gene: Ghoulboy_41 Start: 31508, Stop: 31122, Start Num: 6

Candidate Starts for Ghoulboy_41:

(Start: 6 @31508 has 39 MA's), (7, 31460), (8, 31457), (10, 31382), (12, 31316), (13, 31307), (19, 31259), (24, 31211), (25, 31172),

Gene: HuhtaEnerson15_40 Start: 30986, Stop: 30600, Start Num: 6

Candidate Starts for HuhtaEnerson15_40:

(Start: 6 @30986 has 39 MA's), (7, 30938), (10, 30860), (12, 30794), (13, 30785), (19, 30737), (24, 30689), (25, 30650),

Gene: Jabiru_40 Start: 30604, Stop: 30215, Start Num: 6

Candidate Starts for Jabiru_40:

(Start: 6 @30604 has 39 MA's), (7, 30556), (8, 30553), (10, 30478), (13, 30403), (14, 30400), (19, 30355), (21, 30346), (25, 30265),

Gene: Jovo_39 Start: 31027, Stop: 30641, Start Num: 6

Candidate Starts for Jovo_39:

(Start: 6 @31027 has 39 MA's), (7, 30979), (8, 30976), (10, 30901), (12, 30835), (13, 30826), (19, 30778), (24, 30730), (25, 30691),

Gene: Lev2_39 Start: 30659, Stop: 30273, Start Num: 6

Candidate Starts for Lev2_39:

(Start: 6 @30659 has 39 MA's), (7, 30611), (8, 30608), (10, 30533), (12, 30467), (13, 30458), (19, 30410), (24, 30362), (25, 30323),

Gene: LittleCherry_40 Start: 30996, Stop: 30610, Start Num: 6

Candidate Starts for LittleCherry_40:

(Start: 6 @30996 has 39 MA's), (7, 30948), (10, 30870), (12, 30804), (13, 30795), (19, 30747), (24, 30699), (25, 30660),

Gene: MarysWell_38 Start: 30859, Stop: 30467, Start Num: 6

Candidate Starts for MarysWell_38:

(Start: 6 @30859 has 39 MA's), (7, 30811), (9, 30781), (11, 30730), (12, 30658), (13, 30649), (15, 30637), (25, 30517),

Gene: Micasa_41 Start: 31126, Stop: 30740, Start Num: 6

Candidate Starts for Micasa_41:

(Start: 6 @31126 has 39 MA's), (7, 31078), (10, 31000), (12, 30934), (13, 30925), (19, 30877), (24, 30829), (25, 30790),

Gene: Midas2_39 Start: 30844, Stop: 30458, Start Num: 6

Candidate Starts for Midas2_39:

(Start: 6 @30844 has 39 MA's), (7, 30796), (8, 30793), (10, 30718), (12, 30652), (13, 30643), (19, 30595), (24, 30547), (25, 30508),

Gene: Milcery_40 Start: 30963, Stop: 30577, Start Num: 6

Candidate Starts for Milcery_40:

(Start: 6 @30963 has 39 MA's), (7, 30915), (8, 30912), (10, 30837), (12, 30771), (13, 30762), (19, 30714), (24, 30666), (25, 30627),

Gene: Naca_41 Start: 31274, Stop: 30894, Start Num: 6

Candidate Starts for Naca_41:

(Start: 6 @31274 has 39 MA's), (7, 31226), (8, 31223), (10, 31148), (12, 31082), (13, 31073), (17, 31034), (19, 31025), (23, 30998), (25, 30944), (26, 30911),

Gene: PetterN_43 Start: 30715, Stop: 30335, Start Num: 6

Candidate Starts for PetterN_43:

(Start: 6 @30715 has 39 MA's), (7, 30667), (8, 30664), (9, 30637), (10, 30589), (12, 30523), (17, 30475), (19, 30466), (20, 30460), (23, 30439), (25, 30385), (26, 30352),

Gene: Phlorence_38 Start: 30534, Stop: 30148, Start Num: 6

Candidate Starts for Phlorence_38:

(Start: 6 @30534 has 39 MA's), (7, 30486), (8, 30483), (10, 30408), (12, 30342), (13, 30333), (19, 30285), (24, 30237), (25, 30198),

Gene: PickleBack_39 Start: 30660, Stop: 30274, Start Num: 6

Candidate Starts for PickleBack_39:

(Start: 6 @30660 has 39 MA's), (7, 30612), (8, 30609), (10, 30534), (12, 30468), (13, 30459), (19, 30411), (24, 30363), (25, 30324),

Gene: Prin Ashe11_40 Start: 30826, Stop: 30440, Start Num: 6

Candidate Starts for Prin Ashe11_40:

(Start: 6 @30826 has 39 MA's), (7, 30778), (8, 30775), (10, 30700), (12, 30634), (13, 30625), (18, 30580), (19, 30577), (24, 30529), (25, 30490),

Gene: Scorpia_43 Start: 30792, Stop: 30412, Start Num: 6

Candidate Starts for Scorpia_43:

(Start: 6 @30792 has 39 MA's), (7, 30744), (8, 30741), (10, 30666), (12, 30600), (17, 30552), (19, 30543), (23, 30516), (25, 30462), (26, 30429),

Gene: Swirley_42 Start: 31327, Stop: 30941, Start Num: 6

Candidate Starts for Swirley_42:

(Start: 6 @31327 has 39 MA's), (7, 31279), (10, 31201), (12, 31135), (13, 31126), (19, 31078), (24, 31030), (25, 30991),

Gene: SydNat_41 Start: 31517, Stop: 31131, Start Num: 6

Candidate Starts for SydNat_41:

(Start: 6 @31517 has 39 MA's), (7, 31469), (8, 31466), (10, 31391), (12, 31325), (13, 31316), (19, 31268), (24, 31220), (25, 31181),

Gene: Tarynearal_38 Start: 30769, Stop: 30383, Start Num: 6

Candidate Starts for Tarynearal_38:

(Start: 6 @30769 has 39 MA's), (7, 30721), (10, 30643), (12, 30577), (13, 30568), (18, 30523), (19, 30520), (24, 30472), (25, 30433),

Gene: Theia_37 Start: 30792, Stop: 30406, Start Num: 6

Candidate Starts for Theia_37:

(Start: 6 @30792 has 39 MA's), (7, 30744), (8, 30741), (10, 30666), (12, 30600), (13, 30591), (19, 30543), (24, 30495), (25, 30456),

Gene: Tiger_38 Start: 30325, Stop: 29939, Start Num: 6

Candidate Starts for Tiger_38:

(Start: 6 @30325 has 39 MA's), (7, 30277), (8, 30274), (10, 30199), (12, 30133), (13, 30124), (19, 30076), (24, 30028), (25, 29989),

Gene: Twigg_40 Start: 30966, Stop: 30580, Start Num: 6

Candidate Starts for Twigg_40:

(Start: 6 @30966 has 39 MA's), (7, 30918), (8, 30915), (10, 30840), (12, 30774), (13, 30765), (19, 30717), (24, 30669), (25, 30630),

Gene: UnionJack_40 Start: 30292, Stop: 29903, Start Num: 6

Candidate Starts for UnionJack_40:

(Start: 6 @30292 has 39 MA's), (7, 30244), (8, 30241), (10, 30166), (13, 30091), (19, 30043), (21, 30034), (25, 29953),

Gene: Zolita_40 Start: 31521, Stop: 31135, Start Num: 6

Candidate Starts for Zolita_40:

(Start: 6 @31521 has 39 MA's), (7, 31473), (8, 31470), (10, 31395), (12, 31329), (13, 31320), (19, 31272), (24, 31224), (25, 31185),