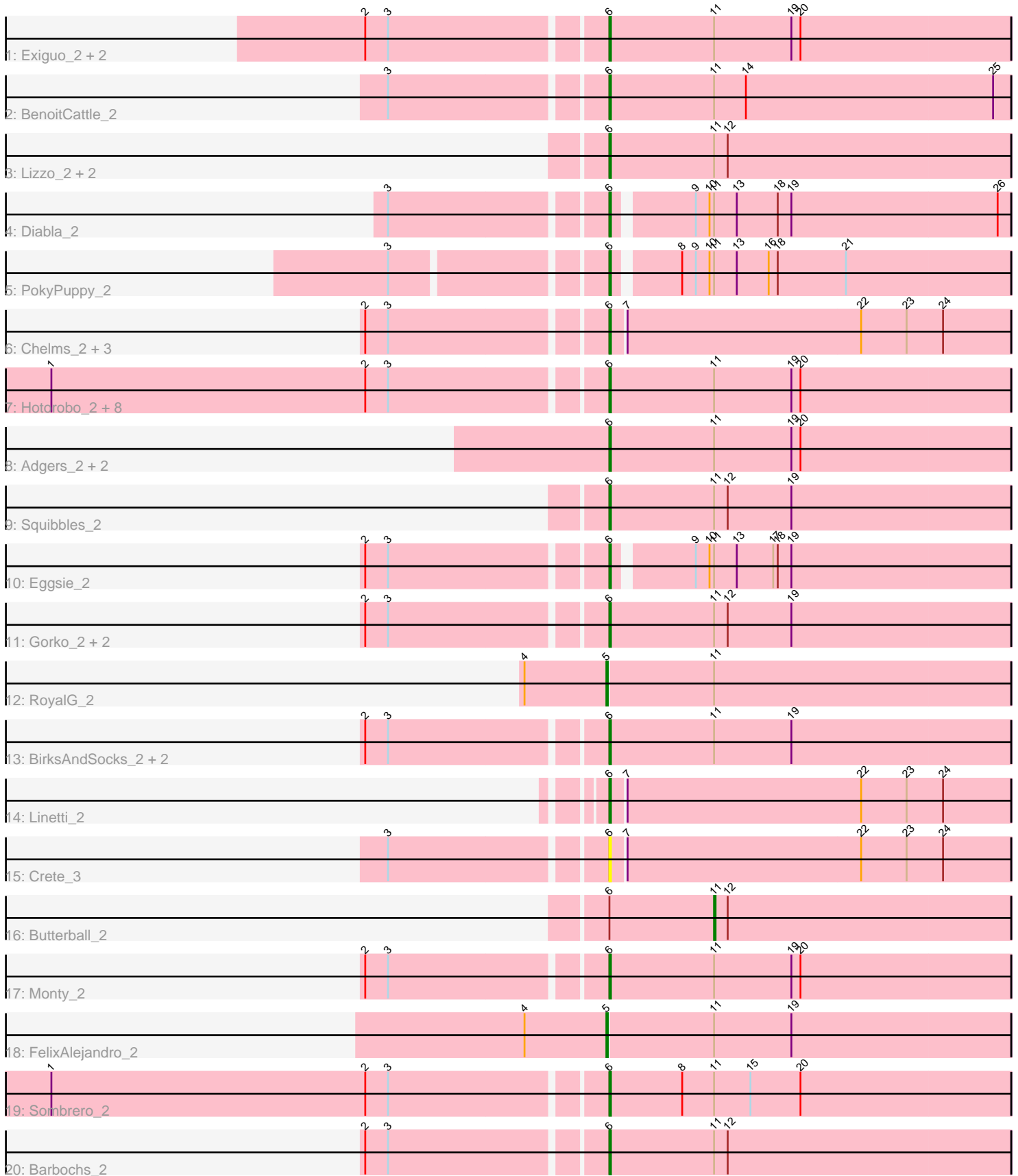


Pham 305132



Note: Tracks are now grouped by subcluster and scaled. Switching in subcluster is indicated by changes in track color. Track scale is now set by default to display the region 30 bp upstream of start 1 to 30 bp downstream of the last possible start. If this default region is judged to be packed too tightly with annotated starts, the track will be further scaled to only show that region of the ORF with annotated starts. This action will be indicated by adding "Zoomed" to the title. For starts, yellow indicates the location of called starts comprised solely of Glimmer/GeneMark auto-annotations, green indicates the location of called starts with at least 1 manual gene annotation.

Pham 305132 Report

This analysis was run 06/08/26 on database version 649.

Pham number 305132 has 41 members, 5 are drafts.

Phages represented in each track:

- Track 1 : Exiguo_2, Jellybones_2, Sam12_2
- Track 2 : BenoitCattle_2
- Track 3 : Lizzo_2, CathyBurgh_2, GourdThymes_2
- Track 4 : Diabla_2
- Track 5 : PokyPuppy_2
- Track 6 : Chelms_2, Dakiti_2, BigShaq_2, PierreThree_2
- Track 7 : Hotorobo_2, Breezic_2, Beaver_2, CinnamonToast_3, Kelzog_2, Worcestershire_2, BillyBobJr_3, RemRem_2, SteveFrench_2
- Track 8 : Adgers_2, Msay19_2, Poland_2
- Track 9 : Squibbles_2
- Track 10 : Eggsie_2
- Track 11 : Gorko_2, Flakey_2, John316_2
- Track 12 : RoyalG_2
- Track 13 : BirksAndSocks_2, Boneham_2, Ekhein_2
- Track 14 : Linetti_2
- Track 15 : Crete_3
- Track 16 : Butterball_2
- Track 17 : Monty_2
- Track 18 : FelixAlejandro_2
- Track 19 : Sombrero_2
- Track 20 : Barbochs_2

Summary of Final Annotations (See graph section above for start numbers):

The start number called the most often in the published annotations is 6, it was called in 33 of the 36 non-draft genes in the pham.

Genes that call this "Most Annotated" start:

- Adgers_2, Barbochs_2, Beaver_2, BenoitCattle_2, BigShaq_2, BillyBobJr_3, BirksAndSocks_2, Boneham_2, Breezic_2, CathyBurgh_2, Chelms_2, CinnamonToast_3, Crete_3, Dakiti_2, Diabla_2, Eggsie_2, Ekhein_2, Exiguo_2, Flakey_2, Gorko_2, GourdThymes_2, Hotorobo_2, Jellybones_2, John316_2, Kelzog_2, Linetti_2, Lizzo_2, Monty_2, Msay19_2, PierreThree_2, PokyPuppy_2, Poland_2, RemRem_2, Sam12_2, Sombrero_2, Squibbles_2, SteveFrench_2,

Worcestershire_2,

Genes that have the "Most Annotated" start but do not call it:

- Butterball_2,

Genes that do not have the "Most Annotated" start:

- FelixAlejandro_2, RoyalG_2,

Summary by start number:

Start 5:

- Found in 2 of 41 (4.9%) of genes in pham
- Manual Annotations of this start: 2 of 36
- Called 100.0% of time when present
- Phage (with cluster) where this start called: FelixAlejandro_2 (CS2), RoyalG_2 (CS2),

Start 6:

- Found in 39 of 41 (95.1%) of genes in pham
- Manual Annotations of this start: 33 of 36
- Called 97.4% of time when present
- Phage (with cluster) where this start called: Adgers_2 (CS2), Barbochs_2 (CS2), Beaver_2 (CS2), BenoitCattle_2 (CS2), BigShaq_2 (CS2), BillyBobJr_3 (CS2), BirksAndSocks_2 (CS2), Boneham_2 (CS2), Breezic_2 (CS2), CathyBurgh_2 (CS2), Chelms_2 (CS2), CinnamonToast_3 (CS2), Crete_3 (CS2), Dakiti_2 (CS2), Diabla_2 (CS2), Eggsie_2 (CS2), Ekhein_2 (CS2), Exiguo_2 (CS2), Flakey_2 (CS2), Gorko_2 (CS2), GourdThymes_2 (CS2), Hotorobo_2 (CS2), Jellybones_2 (CS2), John316_2 (CS2), Kelzog_2 (CS2), Linetti_2 (CS2), Lizzo_2 (CS2), Monty_2 (CS2), Msay19_2 (CS2), PierreThree_2 (CS2), PokyPuppy_2 (CS2), Poland_2 (CS2), RemRem_2 (CS2), Sam12_2 (CS2), Sombrero_2 (CS2), Squibbles_2 (CS2), SteveFrench_2 (CS2), Worcestershire_2 (CS2),

Start 11:

- Found in 35 of 41 (85.4%) of genes in pham
- Manual Annotations of this start: 1 of 36
- Called 2.9% of time when present
- Phage (with cluster) where this start called: Butterball_2 (CS2),

Summary by clusters:

There is one cluster represented in this pham: CS2

Info for manual annotations of cluster CS2:

- Start number 5 was manually annotated 2 times for cluster CS2.
- Start number 6 was manually annotated 33 times for cluster CS2.
- Start number 11 was manually annotated 1 time for cluster CS2.

Gene Information:

Gene: Adgers_2 Start: 1542, Stop: 1279, Start Num: 6

Candidate Starts for Adgers_2:

(Start: 6 @1542 has 33 MA's), (Start: 11 @1473 has 1 MA's), (19, 1422), (20, 1416),

Gene: Barbochs_2 Start: 1543, Stop: 1280, Start Num: 6

Candidate Starts for Barbochs_2:

(2, 1693), (3, 1678), (Start: 6 @1543 has 33 MA's), (Start: 11 @1474 has 1 MA's), (12, 1465),

Gene: Beaver_2 Start: 1554, Stop: 1291, Start Num: 6

Candidate Starts for Beaver_2:

(1, 1911), (2, 1704), (3, 1689), (Start: 6 @1554 has 33 MA's), (Start: 11 @1485 has 1 MA's), (19, 1434), (20, 1428),

Gene: BenoitCattle_2 Start: 1535, Stop: 1272, Start Num: 6

Candidate Starts for BenoitCattle_2:

(3, 1670), (Start: 6 @1535 has 33 MA's), (Start: 11 @1466 has 1 MA's), (14, 1445), (25, 1283),

Gene: BigShaq_2 Start: 1534, Stop: 1274, Start Num: 6

Candidate Starts for BigShaq_2:

(2, 1684), (3, 1669), (Start: 6 @1534 has 33 MA's), (7, 1525), (22, 1372), (23, 1342), (24, 1318),

Gene: BillyBobJr_3 Start: 1578, Stop: 1315, Start Num: 6

Candidate Starts for BillyBobJr_3:

(1, 1935), (2, 1728), (3, 1713), (Start: 6 @1578 has 33 MA's), (Start: 11 @1509 has 1 MA's), (19, 1458), (20, 1452),

Gene: BirksAndSocks_2 Start: 1543, Stop: 1280, Start Num: 6

Candidate Starts for BirksAndSocks_2:

(2, 1693), (3, 1678), (Start: 6 @1543 has 33 MA's), (Start: 11 @1474 has 1 MA's), (19, 1423),

Gene: Boneham_2 Start: 1542, Stop: 1279, Start Num: 6

Candidate Starts for Boneham_2:

(2, 1692), (3, 1677), (Start: 6 @1542 has 33 MA's), (Start: 11 @1473 has 1 MA's), (19, 1422),

Gene: Breezic_2 Start: 1554, Stop: 1291, Start Num: 6

Candidate Starts for Breezic_2:

(1, 1911), (2, 1704), (3, 1689), (Start: 6 @1554 has 33 MA's), (Start: 11 @1485 has 1 MA's), (19, 1434), (20, 1428),

Gene: Butterball_2 Start: 1473, Stop: 1279, Start Num: 11

Candidate Starts for Butterball_2:

(Start: 6 @1542 has 33 MA's), (Start: 11 @1473 has 1 MA's), (12, 1464),

Gene: CathyBurgh_2 Start: 1542, Stop: 1279, Start Num: 6

Candidate Starts for CathyBurgh_2:

(Start: 6 @1542 has 33 MA's), (Start: 11 @1473 has 1 MA's), (12, 1464),

Gene: Chelms_2 Start: 1534, Stop: 1274, Start Num: 6

Candidate Starts for Chelms_2:

(2, 1684), (3, 1669), (Start: 6 @1534 has 33 MA's), (7, 1525), (22, 1372), (23, 1342), (24, 1318),

Gene: CinnamonToast_3 Start: 1578, Stop: 1315, Start Num: 6

Candidate Starts for CinnamonToast_3:

(1, 1935), (2, 1728), (3, 1713), (Start: 6 @1578 has 33 MA's), (Start: 11 @1509 has 1 MA's), (19, 1458), (20, 1452),

Gene: Crete_3 Start: 1785, Stop: 1525, Start Num: 6

Candidate Starts for Crete_3:

(3, 1920), (Start: 6 @1785 has 33 MA's), (7, 1776), (22, 1623), (23, 1593), (24, 1569),

Gene: Dakiti_2 Start: 1534, Stop: 1274, Start Num: 6

Candidate Starts for Dakiti_2:

(2, 1684), (3, 1669), (Start: 6 @1534 has 33 MA's), (7, 1525), (22, 1372), (23, 1342), (24, 1318),

Gene: Diabla_2 Start: 1547, Stop: 1293, Start Num: 6

Candidate Starts for Diabla_2:

(3, 1682), (Start: 6 @1547 has 33 MA's), (9, 1499), (10, 1490), (Start: 11 @1487 has 1 MA's), (13, 1472), (18, 1445), (19, 1436), (26, 1301),

Gene: Eggsie_2 Start: 1536, Stop: 1282, Start Num: 6

Candidate Starts for Eggsie_2:

(2, 1686), (3, 1671), (Start: 6 @1536 has 33 MA's), (9, 1488), (10, 1479), (Start: 11 @1476 has 1 MA's), (13, 1461), (17, 1437), (18, 1434), (19, 1425),

Gene: Ekhein_2 Start: 1542, Stop: 1279, Start Num: 6

Candidate Starts for Ekhein_2:

(2, 1692), (3, 1677), (Start: 6 @1542 has 33 MA's), (Start: 11 @1473 has 1 MA's), (19, 1422),

Gene: Exiguo_2 Start: 1554, Stop: 1291, Start Num: 6

Candidate Starts for Exiguo_2:

(2, 1704), (3, 1689), (Start: 6 @1554 has 33 MA's), (Start: 11 @1485 has 1 MA's), (19, 1434), (20, 1428),

Gene: FelixAlejandro_2 Start: 1576, Stop: 1313, Start Num: 5

Candidate Starts for FelixAlejandro_2:

(4, 1630), (Start: 5 @1576 has 2 MA's), (Start: 11 @1507 has 1 MA's), (19, 1456),

Gene: Flakey_2 Start: 1543, Stop: 1280, Start Num: 6

Candidate Starts for Flakey_2:

(2, 1693), (3, 1678), (Start: 6 @1543 has 33 MA's), (Start: 11 @1474 has 1 MA's), (12, 1465), (19, 1423),

Gene: Gorko_2 Start: 1543, Stop: 1280, Start Num: 6

Candidate Starts for Gorko_2:

(2, 1693), (3, 1678), (Start: 6 @1543 has 33 MA's), (Start: 11 @1474 has 1 MA's), (12, 1465), (19, 1423),

Gene: GourdThymes_2 Start: 1542, Stop: 1279, Start Num: 6

Candidate Starts for GourdThymes_2:

(Start: 6 @1542 has 33 MA's), (Start: 11 @1473 has 1 MA's), (12, 1464),

Gene: Hotorobo_2 Start: 1553, Stop: 1290, Start Num: 6

Candidate Starts for Hotorobo_2:

(1, 1910), (2, 1703), (3, 1688), (Start: 6 @1553 has 33 MA's), (Start: 11 @1484 has 1 MA's), (19, 1433), (20, 1427),

Gene: Jellybones_2 Start: 1577, Stop: 1314, Start Num: 6

Candidate Starts for Jellybones_2:

(2, 1727), (3, 1712), (Start: 6 @1577 has 33 MA's), (Start: 11 @1508 has 1 MA's), (19, 1457), (20, 1451),

Gene: John316_2 Start: 1542, Stop: 1279, Start Num: 6

Candidate Starts for John316_2:

(2, 1692), (3, 1677), (Start: 6 @1542 has 33 MA's), (Start: 11 @1473 has 1 MA's), (12, 1464), (19, 1422),

Gene: Kelzog_2 Start: 1554, Stop: 1291, Start Num: 6

Candidate Starts for Kelzog_2:

(1, 1911), (2, 1704), (3, 1689), (Start: 6 @1554 has 33 MA's), (Start: 11 @1485 has 1 MA's), (19, 1434), (20, 1428),

Gene: Linetti_2 Start: 1532, Stop: 1272, Start Num: 6

Candidate Starts for Linetti_2:

(Start: 6 @1532 has 33 MA's), (7, 1523), (22, 1370), (23, 1340), (24, 1316),

Gene: Lizzo_2 Start: 1542, Stop: 1279, Start Num: 6

Candidate Starts for Lizzo_2:

(Start: 6 @1542 has 33 MA's), (Start: 11 @1473 has 1 MA's), (12, 1464),

Gene: Monty_2 Start: 1555, Stop: 1292, Start Num: 6

Candidate Starts for Monty_2:

(2, 1705), (3, 1690), (Start: 6 @1555 has 33 MA's), (Start: 11 @1486 has 1 MA's), (19, 1435), (20, 1429),

Gene: Msay19_2 Start: 1566, Stop: 1303, Start Num: 6

Candidate Starts for Msay19_2:

(Start: 6 @1566 has 33 MA's), (Start: 11 @1497 has 1 MA's), (19, 1446), (20, 1440),

Gene: PierreThree_2 Start: 1534, Stop: 1274, Start Num: 6

Candidate Starts for PierreThree_2:

(2, 1684), (3, 1669), (Start: 6 @1534 has 33 MA's), (7, 1525), (22, 1372), (23, 1342), (24, 1318),

Gene: PokyPuppy_2 Start: 1632, Stop: 1378, Start Num: 6

Candidate Starts for PokyPuppy_2:

(3, 1761), (Start: 6 @1632 has 33 MA's), (8, 1593), (9, 1584), (10, 1575), (Start: 11 @1572 has 1 MA's), (13, 1557), (16, 1536), (18, 1530), (21, 1485),

Gene: Poland_2 Start: 1542, Stop: 1279, Start Num: 6

Candidate Starts for Poland_2:

(Start: 6 @1542 has 33 MA's), (Start: 11 @1473 has 1 MA's), (19, 1422), (20, 1416),

Gene: RemRem_2 Start: 1554, Stop: 1291, Start Num: 6

Candidate Starts for RemRem_2:

(1, 1911), (2, 1704), (3, 1689), (Start: 6 @1554 has 33 MA's), (Start: 11 @1485 has 1 MA's), (19, 1434), (20, 1428),

Gene: RoyalG_2 Start: 1567, Stop: 1304, Start Num: 5

Candidate Starts for RoyalG_2:

(4, 1621), (Start: 5 @1567 has 2 MA's), (Start: 11 @1498 has 1 MA's),

Gene: Sam12_2 Start: 1554, Stop: 1291, Start Num: 6

Candidate Starts for Sam12_2:

(2, 1704), (3, 1689), (Start: 6 @1554 has 33 MA's), (Start: 11 @1485 has 1 MA's), (19, 1434), (20, 1428),

Gene: Sombrero_2 Start: 1588, Stop: 1325, Start Num: 6

Candidate Starts for Sombrero_2:

(1, 1945), (2, 1738), (3, 1723), (Start: 6 @1588 has 33 MA's), (8, 1540), (Start: 11 @1519 has 1 MA's), (15, 1495), (20, 1462),

Gene: Squibbles_2 Start: 1542, Stop: 1279, Start Num: 6

Candidate Starts for Squibbles_2:

(Start: 6 @1542 has 33 MA's), (Start: 11 @1473 has 1 MA's), (12, 1464), (19, 1422),

Gene: SteveFrench_2 Start: 1554, Stop: 1291, Start Num: 6

Candidate Starts for SteveFrench_2:

(1, 1911), (2, 1704), (3, 1689), (Start: 6 @1554 has 33 MA's), (Start: 11 @1485 has 1 MA's), (19, 1434), (20, 1428),

Gene: Worcestershire_2 Start: 1553, Stop: 1290, Start Num: 6

Candidate Starts for Worcestershire_2:

(1, 1910), (2, 1703), (3, 1688), (Start: 6 @1553 has 33 MA's), (Start: 11 @1484 has 1 MA's), (19, 1433), (20, 1427),