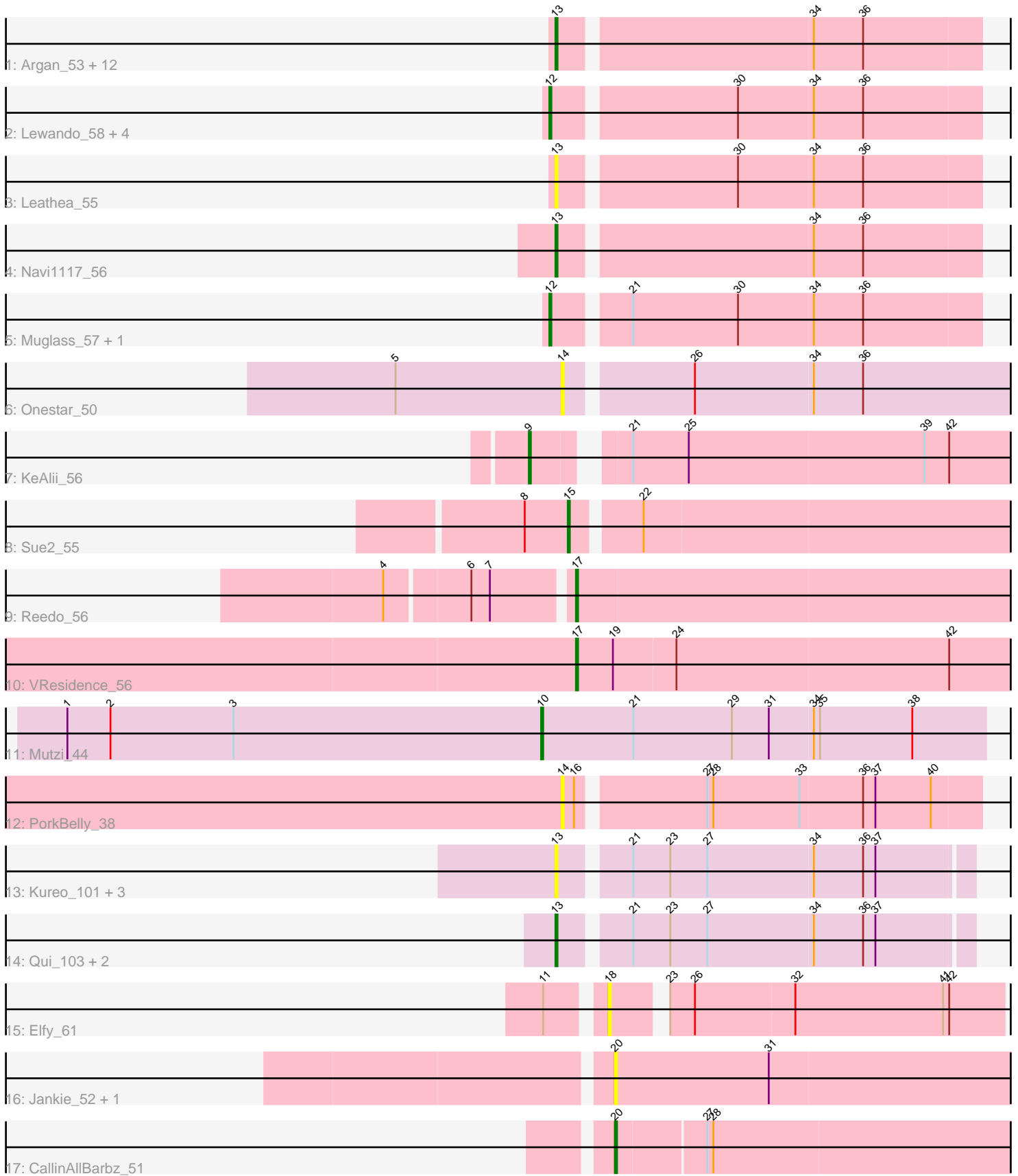


Pham 305142



Note: Tracks are now grouped by subcluster and scaled. Switching in subcluster is indicated by changes in track color. Track scale is now set by default to display the region 30 bp upstream of start 1 to 30 bp downstream of the last possible start. If this default region is judged to be packed too tightly with annotated starts, the track will be further scaled to only show that region of the ORF with annotated starts. This action will be indicated by adding "Zoomed" to the title. For starts, yellow indicates the location of called starts comprised solely of Glimmer/GeneMark auto-annotations, green indicates the location of called starts with at least 1 manual gene annotation.

Pham 305142 Report

This analysis was run 06/08/26 on database version 649.

Pham number 305142 has 40 members, 17 are drafts.

Phages represented in each track:

- Track 1 : Argan_53, Altjira_57, PoeMe_55, Zeina_56, KevinMinion_54, BlackHoleSun_57, Tenney120_56, Mardi_55, Phaila_56, TrixiePhattel_56, Stardrop_55, Uzumaki_52, GantcherGoblin_53
- Track 2 : Lewando_58, Renaldo_61, BarbieDoll_59, Kinny_58, Barbonzobean_61
- Track 3 : Leathea_55
- Track 4 : Navi1117_56
- Track 5 : Muglass_57, Biscute_55
- Track 6 : Onestar_50
- Track 7 : KeAlii_56
- Track 8 : Sue2_55
- Track 9 : Reedo_56
- Track 10 : VResidence_56
- Track 11 : Mutzi_44
- Track 12 : PorkBelly_38
- Track 13 : Kureo_101, Gandionco_100, Marianna39_101, JeNeSaisPas_98
- Track 14 : Qui_103, Elver_103, Paella_103
- Track 15 : Elfy_61
- Track 16 : Jankie_52, GrimEater_50
- Track 17 : CallinAllBarbz_51

Summary of Final Annotations (See graph section above for start numbers):

The start number called the most often in the published annotations is 13, it was called in 14 of the 23 non-draft genes in the pham.

Genes that call this "Most Annotated" start:

- Altjira_57, Argan_53, BlackHoleSun_57, Elver_103, Gandionco_100, GantcherGoblin_53, JeNeSaisPas_98, KevinMinion_54, Kureo_101, Leathea_55, Mardi_55, Marianna39_101, Navi1117_56, Paella_103, Phaila_56, PoeMe_55, Qui_103, Stardrop_55, Tenney120_56, TrixiePhattel_56, Uzumaki_52, Zeina_56,

Genes that have the "Most Annotated" start but do not call it:

-

Genes that do not have the "Most Annotated" start:

- BarbieDoll_59, Barbonzobean_61, Biscute_55, CallinAllBarbz_51, Elfy_61, GrimEater_50, Jankie_52, KeAlii_56, Kinny_58, Lewando_58, Muglass_57, Mutzi_44, Onestar_50, PorkBelly_38, Reedo_56, Renaldo_61, Sue2_55, VResidence_56,

Summary by start number:

Start 9:

- Found in 1 of 40 (2.5%) of genes in pham
- Manual Annotations of this start: 1 of 23
- Called 100.0% of time when present
- Phage (with cluster) where this start called: KeAlii_56 (AZ1),

Start 10:

- Found in 1 of 40 (2.5%) of genes in pham
- Manual Annotations of this start: 1 of 23
- Called 100.0% of time when present
- Phage (with cluster) where this start called: Mutzi_44 (DC1),

Start 12:

- Found in 7 of 40 (17.5%) of genes in pham
- Manual Annotations of this start: 3 of 23
- Called 100.0% of time when present
- Phage (with cluster) where this start called: BarbieDoll_59 (AU6), Barbonzobean_61 (AU6), Biscute_55 (AU6), Kinny_58 (AU6), Lewando_58 (AU6), Muglass_57 (AU6), Renaldo_61 (AU6),

Start 13:

- Found in 22 of 40 (55.0%) of genes in pham
- Manual Annotations of this start: 14 of 23
- Called 100.0% of time when present
- Phage (with cluster) where this start called: Altjira_57 (AU6), Argan_53 (AU6), BlackHoleSun_57 (AU6), Elver_103 (FK), Gandionco_100 (FK), GantcherGoblin_53 (AU6), JeNeSaisPas_98 (FK), KevinMinion_54 (AU6), Kureo_101 (FK), Leathea_55 (AU6), Mardi_55 (AU6), Marianna39_101 (FK), Navi1117_56 (AU6), Paella_103 (FK), Phaila_56 (AU6), PoeMe_55 (AU6), Qui_103 (FK), Stardrop_55 (AU6), Tenney120_56 (AU6), TrixiePhattel_56 (AU6), Uzumaki_52 (AU6), Zeina_56 (AU6),

Start 14:

- Found in 2 of 40 (5.0%) of genes in pham
- No Manual Annotations of this start.
- Called 100.0% of time when present
- Phage (with cluster) where this start called: Onestar_50 (AW), PorkBelly_38 (FJ),

Start 15:

- Found in 1 of 40 (2.5%) of genes in pham
- Manual Annotations of this start: 1 of 23
- Called 100.0% of time when present
- Phage (with cluster) where this start called: Sue2_55 (AZ1),

Start 17:

- Found in 2 of 40 (5.0%) of genes in pham
- Manual Annotations of this start: 2 of 23

- Called 100.0% of time when present
- Phage (with cluster) where this start called: Reedo_56 (AZ1), VResidence_56 (AZ1),

Start 18:

- Found in 1 of 40 (2.5%) of genes in pham
- No Manual Annotations of this start.
- Called 100.0% of time when present
- Phage (with cluster) where this start called: Elfy_61 (FP),

Start 20:

- Found in 3 of 40 (7.5%) of genes in pham
- Manual Annotations of this start: 1 of 23
- Called 100.0% of time when present
- Phage (with cluster) where this start called: CallinAllBarbz_51 (FP), GrimEater_50 (FP), Jankie_52 (FP),

Summary by clusters:

There are 7 clusters represented in this pham: FP, AW, AU6, AZ1, FJ, FK, DC1,

Info for manual annotations of cluster AU6:

- Start number 12 was manually annotated 3 times for cluster AU6.
- Start number 13 was manually annotated 11 times for cluster AU6.

Info for manual annotations of cluster AZ1:

- Start number 9 was manually annotated 1 time for cluster AZ1.
- Start number 15 was manually annotated 1 time for cluster AZ1.
- Start number 17 was manually annotated 2 times for cluster AZ1.

Info for manual annotations of cluster DC1:

- Start number 10 was manually annotated 1 time for cluster DC1.

Info for manual annotations of cluster FK:

- Start number 13 was manually annotated 3 times for cluster FK.

Info for manual annotations of cluster FP:

- Start number 20 was manually annotated 1 time for cluster FP.

Gene Information:

Gene: Altjira_57 Start: 35913, Stop: 36110, Start Num: 13

Candidate Starts for Altjira_57:

(Start: 13 @35913 has 14 MA's), (34, 36030), (36, 36054),

Gene: Argan_53 Start: 34620, Stop: 34817, Start Num: 13

Candidate Starts for Argan_53:

(Start: 13 @34620 has 14 MA's), (34, 34737), (36, 34761),

Gene: BarbieDoll_59 Start: 36340, Stop: 36540, Start Num: 12

Candidate Starts for BarbieDoll_59:

(Start: 12 @36340 has 3 MA's), (30, 36424), (34, 36460), (36, 36484),

Gene: Barbonzobean_61 Start: 36603, Stop: 36803, Start Num: 12

Candidate Starts for Barbonzobean_61:

(Start: 12 @36603 has 3 MA's), (30, 36687), (34, 36723), (36, 36747),

Gene: Biscute_55 Start: 35992, Stop: 36192, Start Num: 12

Candidate Starts for Biscute_55:

(Start: 12 @35992 has 3 MA's), (21, 36025), (30, 36076), (34, 36112), (36, 36136),

Gene: BlackHoleSun_57 Start: 34745, Stop: 34942, Start Num: 13

Candidate Starts for BlackHoleSun_57:

(Start: 13 @34745 has 14 MA's), (34, 34862), (36, 34886),

Gene: CallinAllBarbz_51 Start: 36641, Stop: 36862, Start Num: 20

Candidate Starts for CallinAllBarbz_51:

(Start: 20 @36641 has 1 MA's), (27, 36683), (28, 36686),

Gene: Elfy_61 Start: 37955, Stop: 38137, Start Num: 18

Candidate Starts for Elfy_61:

(11, 37931), (18, 37955), (23, 37976), (26, 37988), (32, 38036), (41, 38108), (42, 38111),

Gene: Elver_103 Start: 55844, Stop: 56035, Start Num: 13

Candidate Starts for Elver_103:

(Start: 13 @55844 has 14 MA's), (21, 55874), (23, 55892), (27, 55910), (34, 55961), (36, 55985), (37, 55991),

Gene: Gandionco_100 Start: 54700, Stop: 54891, Start Num: 13

Candidate Starts for Gandionco_100:

(Start: 13 @54700 has 14 MA's), (21, 54730), (23, 54748), (27, 54766), (34, 54817), (36, 54841), (37, 54847),

Gene: GantcherGoblin_53 Start: 34694, Stop: 34891, Start Num: 13

Candidate Starts for GantcherGoblin_53:

(Start: 13 @34694 has 14 MA's), (34, 34811), (36, 34835),

Gene: GrimEater_50 Start: 35180, Stop: 35371, Start Num: 20

Candidate Starts for GrimEater_50:

(Start: 20 @35180 has 1 MA's), (31, 35255),

Gene: Jankie_52 Start: 35359, Stop: 35550, Start Num: 20

Candidate Starts for Jankie_52:

(Start: 20 @35359 has 1 MA's), (31, 35434),

Gene: JeNeSaisPas_98 Start: 55274, Stop: 55465, Start Num: 13

Candidate Starts for JeNeSaisPas_98:

(Start: 13 @55274 has 14 MA's), (21, 55304), (23, 55322), (27, 55340), (34, 55391), (36, 55415), (37, 55421),

Gene: KeAlii_56 Start: 38432, Stop: 38650, Start Num: 9

Candidate Starts for KeAlii_56:

(Start: 9 @38432 has 1 MA's), (21, 38468), (25, 38495), (39, 38609), (42, 38621),

Gene: KevinMinion_54 Start: 35571, Stop: 35768, Start Num: 13

Candidate Starts for KevinMinion_54:

(Start: 13 @35571 has 14 MA's), (34, 35688), (36, 35712),

Gene: Kinny_58 Start: 36835, Stop: 37035, Start Num: 12

Candidate Starts for Kinny_58:

(Start: 12 @36835 has 3 MA's), (30, 36919), (34, 36955), (36, 36979),

Gene: Kureo_101 Start: 54854, Stop: 55045, Start Num: 13

Candidate Starts for Kureo_101:

(Start: 13 @54854 has 14 MA's), (21, 54884), (23, 54902), (27, 54920), (34, 54971), (36, 54995), (37, 55001),

Gene: Leathea_55 Start: 34458, Stop: 34655, Start Num: 13

Candidate Starts for Leathea_55:

(Start: 13 @34458 has 14 MA's), (30, 34539), (34, 34575), (36, 34599),

Gene: Lewando_58 Start: 36342, Stop: 36542, Start Num: 12

Candidate Starts for Lewando_58:

(Start: 12 @36342 has 3 MA's), (30, 36426), (34, 36462), (36, 36486),

Gene: Mardi_55 Start: 35122, Stop: 35319, Start Num: 13

Candidate Starts for Mardi_55:

(Start: 13 @35122 has 14 MA's), (34, 35239), (36, 35263),

Gene: Marianna39_101 Start: 55269, Stop: 55460, Start Num: 13

Candidate Starts for Marianna39_101:

(Start: 13 @55269 has 14 MA's), (21, 55299), (23, 55317), (27, 55335), (34, 55386), (36, 55410), (37, 55416),

Gene: Muglass_57 Start: 35896, Stop: 36096, Start Num: 12

Candidate Starts for Muglass_57:

(Start: 12 @35896 has 3 MA's), (21, 35929), (30, 35980), (34, 36016), (36, 36040),

Gene: Mutzi_44 Start: 37917, Stop: 38132, Start Num: 10

Candidate Starts for Mutzi_44:

(1, 37686), (2, 37707), (3, 37767), (Start: 10 @37917 has 1 MA's), (21, 37962), (29, 38010), (31, 38028), (34, 38049), (35, 38052), (38, 38097),

Gene: Navi1117_56 Start: 35388, Stop: 35585, Start Num: 13

Candidate Starts for Navi1117_56:

(Start: 13 @35388 has 14 MA's), (34, 35505), (36, 35529),

Gene: Onestar_50 Start: 33377, Stop: 33592, Start Num: 14

Candidate Starts for Onestar_50:

(5, 33296), (14, 33377), (26, 33434), (34, 33491), (36, 33515),

Gene: Paella_103 Start: 56434, Stop: 56625, Start Num: 13

Candidate Starts for Paella_103:

(Start: 13 @56434 has 14 MA's), (21, 56464), (23, 56482), (27, 56500), (34, 56551), (36, 56575), (37, 56581),

Gene: Phaila_56 Start: 34769, Stop: 34966, Start Num: 13
Candidate Starts for Phaila_56:
(Start: 13 @34769 has 14 MA's), (34, 34886), (36, 34910),

Gene: PoeMe_55 Start: 35313, Stop: 35510, Start Num: 13
Candidate Starts for PoeMe_55:
(Start: 13 @35313 has 14 MA's), (34, 35430), (36, 35454),

Gene: PorkBelly_38 Start: 29387, Stop: 29193, Start Num: 14
Candidate Starts for PorkBelly_38:
(14, 29387), (16, 29381), (27, 29324), (28, 29321), (33, 29279), (36, 29249), (37, 29243), (40, 29216),

Gene: Qui_103 Start: 56434, Stop: 56625, Start Num: 13
Candidate Starts for Qui_103:
(Start: 13 @56434 has 14 MA's), (21, 56464), (23, 56482), (27, 56500), (34, 56551), (36, 56575), (37, 56581),

Gene: Reedo_56 Start: 36712, Stop: 36921, Start Num: 17
Candidate Starts for Reedo_56:
(4, 36628), (6, 36667), (7, 36676), (Start: 17 @36712 has 2 MA's),

Gene: Renaldo_61 Start: 36651, Stop: 36851, Start Num: 12
Candidate Starts for Renaldo_61:
(Start: 12 @36651 has 3 MA's), (30, 36735), (34, 36771), (36, 36795),

Gene: Stardrop_55 Start: 35415, Stop: 35612, Start Num: 13
Candidate Starts for Stardrop_55:
(Start: 13 @35415 has 14 MA's), (34, 35532), (36, 35556),

Gene: Sue2_55 Start: 38279, Stop: 38485, Start Num: 15
Candidate Starts for Sue2_55:
(8, 38258), (Start: 15 @38279 has 1 MA's), (22, 38309),

Gene: Tenney120_56 Start: 35355, Stop: 35552, Start Num: 13
Candidate Starts for Tenney120_56:
(Start: 13 @35355 has 14 MA's), (34, 35472), (36, 35496),

Gene: TrixiePhattel_56 Start: 34783, Stop: 34980, Start Num: 13
Candidate Starts for TrixiePhattel_56:
(Start: 13 @34783 has 14 MA's), (34, 34900), (36, 34924),

Gene: Uzumaki_52 Start: 34796, Stop: 34993, Start Num: 13
Candidate Starts for Uzumaki_52:
(Start: 13 @34796 has 14 MA's), (34, 34913), (36, 34937),

Gene: VResidence_56 Start: 37677, Stop: 37886, Start Num: 17
Candidate Starts for VResidence_56:
(Start: 17 @37677 has 2 MA's), (19, 37695), (24, 37725), (42, 37857),

Gene: Zeina_56 Start: 35363, Stop: 35560, Start Num: 13
Candidate Starts for Zeina_56:
(Start: 13 @35363 has 14 MA's), (34, 35480), (36, 35504),