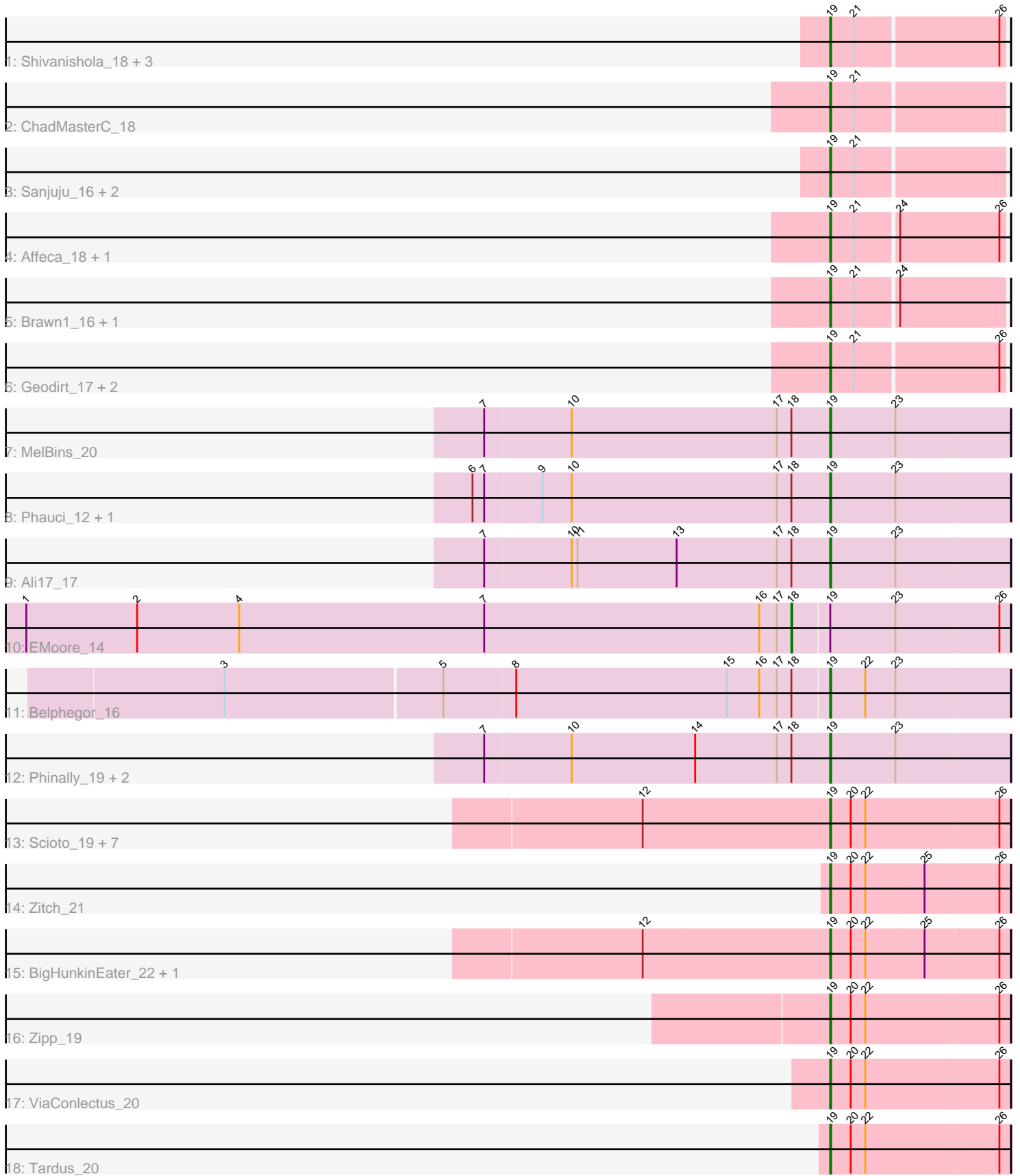


Pham 305155



Note: Tracks are now grouped by subcluster and scaled. Switching in subcluster is indicated by changes in track color. Track scale is now set by default to display the region 30 bp upstream of start 1 to 30 bp downstream of the last possible start. If this default region is judged to be packed too tightly with annotated starts, the track will be further scaled to only show that region of the ORF with annotated starts. This action will be indicated by adding "Zoomed" to the title. For starts, yellow indicates the location of called starts comprised solely of Glimmer/GeneMark auto-annotations, green indicates the location of called starts with at least 1 manual gene annotation.

Pham 305155 Report

This analysis was run 06/08/26 on database version 649.

Pham number 305155 has 38 members, 2 are drafts.

Phages represented in each track:

- Track 1 : Shivanishola_18, Barsten_18, Fosterous_15, Bibwit_18
- Track 2 : ChadMasterC_18
- Track 3 : Sanjuju_16, Stultus_18, Jabberwocky_16
- Track 4 : Affeca_18, Angelicage_18
- Track 5 : Brawn1_16, Kewpiedoll_19
- Track 6 : Geodirt_17, Fitzgerald_16, Rofo_17
- Track 7 : MelBins_20
- Track 8 : Phauci_12, Hans_21
- Track 9 : Ali17_17
- Track 10 : EMoore_14
- Track 11 : Belphegor_16
- Track 12 : Phinally_19, Inspectinfecti_20, Leonard_19
- Track 13 : Scioto_19, Sampson_19, DoctorFroggo_19, Abblin_19, Natkenzie_19, Delrey21_19, Pumpkiney_21, Verity_19
- Track 14 : Zitch_21
- Track 15 : BigHunkinEater_22, APunk_21
- Track 16 : Zipp_19
- Track 17 : ViaConlectus_20
- Track 18 : Tardus_20

Summary of Final Annotations (See graph section above for start numbers):

The start number called the most often in the published annotations is 19, it was called in 35 of the 36 non-draft genes in the pham.

Genes that call this "Most Annotated" start:

- APunk_21, Abblin_19, Affeca_18, Ali17_17, Angelicage_18, Barsten_18, Belphegor_16, Bibwit_18, BigHunkinEater_22, Brawn1_16, ChadMasterC_18, Delrey21_19, DoctorFroggo_19, Fitzgerald_16, Fosterous_15, Geodirt_17, Hans_21, Inspectinfecti_20, Jabberwocky_16, Kewpiedoll_19, Leonard_19, MelBins_20, Natkenzie_19, Phauci_12, Phinally_19, Pumpkiney_21, Rofo_17, Sampson_19, Sanjuju_16, Scioto_19, Shivanishola_18, Stultus_18, Tardus_20, Verity_19, ViaConlectus_20, Zipp_19, Zitch_21,

Genes that have the "Most Annotated" start but do not call it:

- EMoore_14,

Genes that do not have the "Most Annotated" start:

-

Summary by start number:

Start 18:

- Found in 9 of 38 (23.7%) of genes in pham
- Manual Annotations of this start: 1 of 36
- Called 11.1% of time when present
- Phage (with cluster) where this start called: EMoore_14 (DE2),

Start 19:

- Found in 38 of 38 (100.0%) of genes in pham
- Manual Annotations of this start: 35 of 36
- Called 97.4% of time when present
- Phage (with cluster) where this start called: APunk_21 (DE4), Abblin_19 (DE4), Affeca_18 (DE1), Ali17_17 (DE2), Angelicage_18 (DE1), Barsten_18 (DE1), Belphegor_16 (DE2), Bibwit_18 (DE1), BigHunkinEater_22 (DE4), Brawn1_16 (DE1), ChadMasterC_18 (DE1), Delrey21_19 (DE4), DoctorFroggo_19 (DE4), Fitzgerald_16 (DE1), Fosterous_15 (DE1), Geodirt_17 (DE1), Hans_21 (DE2), Inspectinfecti_20 (DE2), Jabberwocky_16 (DE1), Kewpiedoll_19 (DE1), Leonard_19 (DE2), MelBins_20 (DE2), Natkenzie_19 (DE4), Phauci_12 (DE2), Phinally_19 (DE2), Pumpkiney_21 (DE4), Rofo_17 (DE1), Sampson_19 (DE4), Sanjuju_16 (DE1), Scioto_19 (DE4), Shivanishola_18 (DE1), Stultus_18 (DE1), Tardus_20 (DE4), Verity_19 (DE4), ViaConlectus_20 (DE4), Zipp_19 (DE4), Zitch_21 (DE4),

Summary by clusters:

There are 3 clusters represented in this pham: DE1, DE2, DE4,

Info for manual annotations of cluster DE1:

- Start number 19 was manually annotated 14 times for cluster DE1.

Info for manual annotations of cluster DE2:

- Start number 18 was manually annotated 1 time for cluster DE2.
- Start number 19 was manually annotated 8 times for cluster DE2.

Info for manual annotations of cluster DE4:

- Start number 19 was manually annotated 13 times for cluster DE4.

Gene Information:

Gene: APunk_21 Start: 15881, Stop: 16063, Start Num: 19

Candidate Starts for APunk_21:

(12, 15689), (Start: 19 @15881 has 35 MA's), (20, 15902), (22, 15917), (25, 15977), (26, 16052),

Gene: Abblin_19 Start: 15094, Stop: 15276, Start Num: 19

Candidate Starts for Abblin_19:

(12, 14902), (Start: 19 @15094 has 35 MA's), (20, 15115), (22, 15130), (26, 15265),

Gene: Affeca_18 Start: 14929, Stop: 15102, Start Num: 19

Candidate Starts for Affeca_18:

(Start: 19 @14929 has 35 MA's), (21, 14953), (24, 14995), (26, 15097),

Gene: Ali17_17 Start: 14222, Stop: 14404, Start Num: 19

Candidate Starts for Ali17_17:

(7, 13871), (10, 13958), (11, 13964), (13, 14066), (17, 14168), (Start: 18 @14183 has 1 MA's), (Start: 19 @14222 has 35 MA's), (23, 14288),

Gene: Angelicage_18 Start: 15352, Stop: 15525, Start Num: 19

Candidate Starts for Angelicage_18:

(Start: 19 @15352 has 35 MA's), (21, 15376), (24, 15418), (26, 15520),

Gene: Barsten_18 Start: 14428, Stop: 14601, Start Num: 19

Candidate Starts for Barsten_18:

(Start: 19 @14428 has 35 MA's), (21, 14452), (26, 14596),

Gene: Belphegor_16 Start: 13327, Stop: 13509, Start Num: 19

Candidate Starts for Belphegor_16:

(3, 12718), (5, 12937), (8, 13009), (15, 13225), (16, 13258), (17, 13276), (Start: 18 @13291 has 1 MA's), (Start: 19 @13327 has 35 MA's), (22, 13363), (23, 13393),

Gene: Bibwit_18 Start: 14672, Stop: 14845, Start Num: 19

Candidate Starts for Bibwit_18:

(Start: 19 @14672 has 35 MA's), (21, 14696), (26, 14840),

Gene: BigHunkinEater_22 Start: 14206, Stop: 14388, Start Num: 19

Candidate Starts for BigHunkinEater_22:

(12, 14014), (Start: 19 @14206 has 35 MA's), (20, 14227), (22, 14242), (25, 14302), (26, 14377),

Gene: Brawn1_16 Start: 14094, Stop: 14267, Start Num: 19

Candidate Starts for Brawn1_16:

(Start: 19 @14094 has 35 MA's), (21, 14118), (24, 14160),

Gene: ChadMasterC_18 Start: 14829, Stop: 15002, Start Num: 19

Candidate Starts for ChadMasterC_18:

(Start: 19 @14829 has 35 MA's), (21, 14853),

Gene: Delrey21_19 Start: 14557, Stop: 14739, Start Num: 19

Candidate Starts for Delrey21_19:

(12, 14365), (Start: 19 @14557 has 35 MA's), (20, 14578), (22, 14593), (26, 14728),

Gene: DoctorFroggo_19 Start: 14557, Stop: 14739, Start Num: 19

Candidate Starts for DoctorFroggo_19:

(12, 14365), (Start: 19 @14557 has 35 MA's), (20, 14578), (22, 14593), (26, 14728),

Gene: EMoore_14 Start: 12548, Stop: 12766, Start Num: 18

Candidate Starts for EMoore_14:

(1, 11762), (2, 11876), (4, 11981), (7, 12233), (16, 12515), (17, 12533), (Start: 18 @12548 has 1 MA's), (Start: 19 @12584 has 35 MA's), (23, 12650), (26, 12755),

Gene: Fitzgerald_16 Start: 14147, Stop: 14320, Start Num: 19
Candidate Starts for Fitzgerald_16:
(Start: 19 @14147 has 35 MA's), (21, 14171), (26, 14315),

Gene: Fosterous_15 Start: 14173, Stop: 14346, Start Num: 19
Candidate Starts for Fosterous_15:
(Start: 19 @14173 has 35 MA's), (21, 14197), (26, 14341),

Gene: Geodirt_17 Start: 14674, Stop: 14847, Start Num: 19
Candidate Starts for Geodirt_17:
(Start: 19 @14674 has 35 MA's), (21, 14698), (26, 14842),

Gene: Hans_21 Start: 14883, Stop: 15065, Start Num: 19
Candidate Starts for Hans_21:
(6, 14520), (7, 14532), (9, 14589), (10, 14619), (17, 14829), (Start: 18 @14844 has 1 MA's), (Start: 19 @14883 has 35 MA's), (23, 14949),

Gene: Inspectinfecti_20 Start: 15305, Stop: 15487, Start Num: 19
Candidate Starts for Inspectinfecti_20:
(7, 14954), (10, 15041), (14, 15167), (17, 15251), (Start: 18 @15266 has 1 MA's), (Start: 19 @15305 has 35 MA's), (23, 15371),

Gene: Jabberwocky_16 Start: 14581, Stop: 14754, Start Num: 19
Candidate Starts for Jabberwocky_16:
(Start: 19 @14581 has 35 MA's), (21, 14605),

Gene: Kewpiedoll_19 Start: 14627, Stop: 14800, Start Num: 19
Candidate Starts for Kewpiedoll_19:
(Start: 19 @14627 has 35 MA's), (21, 14651), (24, 14693),

Gene: Leonard_19 Start: 14900, Stop: 15082, Start Num: 19
Candidate Starts for Leonard_19:
(7, 14549), (10, 14636), (14, 14762), (17, 14846), (Start: 18 @14861 has 1 MA's), (Start: 19 @14900 has 35 MA's), (23, 14966),

Gene: MelBins_20 Start: 15104, Stop: 15286, Start Num: 19
Candidate Starts for MelBins_20:
(7, 14753), (10, 14840), (17, 15050), (Start: 18 @15065 has 1 MA's), (Start: 19 @15104 has 35 MA's), (23, 15170),

Gene: Natkenzie_19 Start: 15094, Stop: 15276, Start Num: 19
Candidate Starts for Natkenzie_19:
(12, 14902), (Start: 19 @15094 has 35 MA's), (20, 15115), (22, 15130), (26, 15265),

Gene: Phauci_12 Start: 11467, Stop: 11649, Start Num: 19
Candidate Starts for Phauci_12:
(6, 11104), (7, 11116), (9, 11173), (10, 11203), (17, 11413), (Start: 18 @11428 has 1 MA's), (Start: 19 @11467 has 35 MA's), (23, 11533),

Gene: Phinally_19 Start: 14897, Stop: 15079, Start Num: 19
Candidate Starts for Phinally_19:
(7, 14546), (10, 14633), (14, 14759), (17, 14843), (Start: 18 @14858 has 1 MA's), (Start: 19 @14897 has 35 MA's), (23, 14963),

Gene: Pumpkiney_21 Start: 13807, Stop: 13989, Start Num: 19
Candidate Starts for Pumpkiney_21:
(12, 13615), (Start: 19 @13807 has 35 MA's), (20, 13828), (22, 13843), (26, 13978),

Gene: Rofo_17 Start: 14283, Stop: 14456, Start Num: 19
Candidate Starts for Rofo_17:
(Start: 19 @14283 has 35 MA's), (21, 14307), (26, 14451),

Gene: Sampson_19 Start: 15039, Stop: 15221, Start Num: 19
Candidate Starts for Sampson_19:
(12, 14847), (Start: 19 @15039 has 35 MA's), (20, 15060), (22, 15075), (26, 15210),

Gene: Sanjuju_16 Start: 14232, Stop: 14405, Start Num: 19
Candidate Starts for Sanjuju_16:
(Start: 19 @14232 has 35 MA's), (21, 14256),

Gene: Scioto_19 Start: 15094, Stop: 15276, Start Num: 19
Candidate Starts for Scioto_19:
(12, 14902), (Start: 19 @15094 has 35 MA's), (20, 15115), (22, 15130), (26, 15265),

Gene: Shivanishola_18 Start: 14525, Stop: 14698, Start Num: 19
Candidate Starts for Shivanishola_18:
(Start: 19 @14525 has 35 MA's), (21, 14549), (26, 14693),

Gene: Stultus_18 Start: 14527, Stop: 14700, Start Num: 19
Candidate Starts for Stultus_18:
(Start: 19 @14527 has 35 MA's), (21, 14551),

Gene: Tardus_20 Start: 14374, Stop: 14556, Start Num: 19
Candidate Starts for Tardus_20:
(Start: 19 @14374 has 35 MA's), (20, 14395), (22, 14410), (26, 14545),

Gene: Verity_19 Start: 14557, Stop: 14739, Start Num: 19
Candidate Starts for Verity_19:
(12, 14365), (Start: 19 @14557 has 35 MA's), (20, 14578), (22, 14593), (26, 14728),

Gene: ViaConlectus_20 Start: 15109, Stop: 15291, Start Num: 19
Candidate Starts for ViaConlectus_20:
(Start: 19 @15109 has 35 MA's), (20, 15130), (22, 15145), (26, 15280),

Gene: Zipp_19 Start: 15206, Stop: 15388, Start Num: 19
Candidate Starts for Zipp_19:
(Start: 19 @15206 has 35 MA's), (20, 15227), (22, 15242), (26, 15377),

Gene: Zitch_21 Start: 14336, Stop: 14518, Start Num: 19
Candidate Starts for Zitch_21:
(Start: 19 @14336 has 35 MA's), (20, 14357), (22, 14372), (25, 14432), (26, 14507),