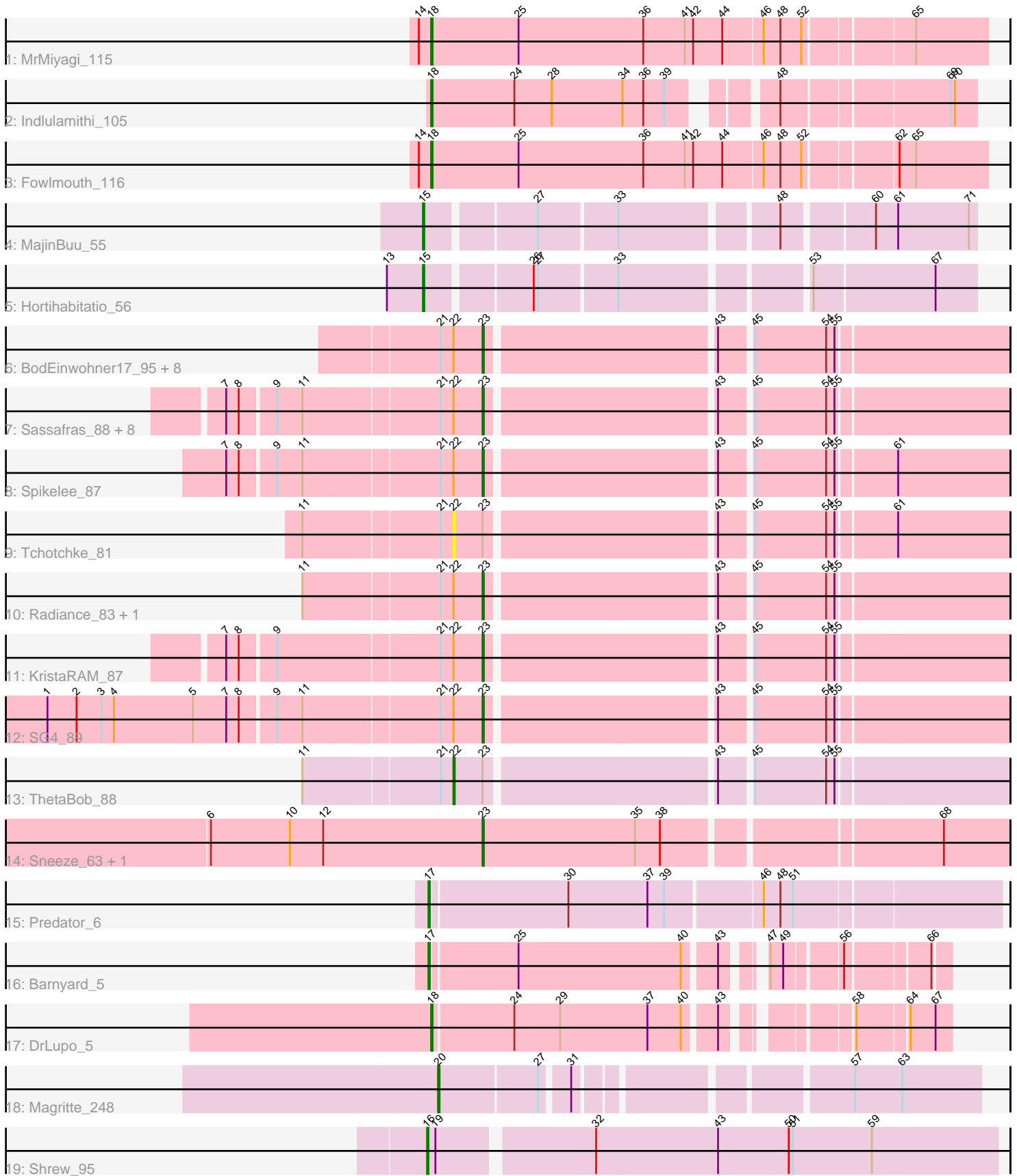


Pham 305166



Note: Tracks are now grouped by subcluster and scaled. Switching in subcluster is indicated by changes in track color. Track scale is now set by default to display the region 30 bp upstream of start 1 to 30 bp downstream of the last possible start. If this default region is judged to be packed too tightly with annotated starts, the track will be further scaled to only show that region of the ORF with annotated starts. This action will be indicated by adding "Zoomed" to the title. For starts, yellow indicates the location of called starts comprised solely of Glimmer/GeneMark auto-annotations, green indicates the location of called starts with at least 1 manual gene annotation.

Pham 305166 Report

This analysis was run 06/08/26 on database version 649.

Pham number 305166 has 37 members, 2 are drafts.

Phages represented in each track:

- Track 1 : MrMiyagi_115
- Track 2 : Indlulamithi_105
- Track 3 : Fowlmouth_116
- Track 4 : MajinBuu_55
- Track 5 : Hortihabitatio_56
- Track 6 : BodEinwohner17_95, IrishSherpFalk_86, WillSterrel_85, Clank_84, Gandolph_86, SuperGrey_87, Bipolar_88, Doug_84, Blexus_83
- Track 7 : Sassafras_88, JoeyJr_90, Squirty_87, RedBird_87, Dorothy_87, Inventum_84, Aubs_87, Leperchaun_88, Stap_83
- Track 8 : Spikelee_87
- Track 9 : Tchotchke_81
- Track 10 : Radiance_83, MadMen_92
- Track 11 : KristaRAM_87
- Track 12 : SG4_89
- Track 13 : ThetaBob_88
- Track 14 : Sneeze_63, Rabbs_64
- Track 15 : Predator_6
- Track 16 : Barnyard_5
- Track 17 : DrLupo_5
- Track 18 : Magritte_248
- Track 19 : Shrew_95

Summary of Final Annotations (See graph section above for start numbers):

The start number called the most often in the published annotations is 23, it was called in 24 of the 35 non-draft genes in the pham.

Genes that call this "Most Annotated" start:

- Aubs_87, Bipolar_88, Blexus_83, BodEinwohner17_95, Clank_84, Dorothy_87, Doug_84, Gandolph_86, Inventum_84, IrishSherpFalk_86, JoeyJr_90, KristaRAM_87, Leperchaun_88, MadMen_92, Rabbs_64, Radiance_83, RedBird_87, SG4_89, Sassafras_88, Sneeze_63, Spikelee_87, Squirty_87, Stap_83, SuperGrey_87, WillSterrel_85,

Genes that have the "Most Annotated" start but do not call it:

- Tchotchke_81, ThetaBob_88,

Genes that do not have the "Most Annotated" start:

- Barnyard_5, DrLupo_5, Fowlmouth_116, Hortihabitatio_56, Indlulamithi_105, Magritte_248, MajinBuu_55, MrMiyagi_115, Predator_6, Shrew_95,

Summary by start number:

Start 15:

- Found in 2 of 37 (5.4%) of genes in pham
- Manual Annotations of this start: 2 of 35
- Called 100.0% of time when present
- Phage (with cluster) where this start called: Hortihabitatio_56 (DJ), MajinBuu_55 (DJ),

Start 16:

- Found in 1 of 37 (2.7%) of genes in pham
- Manual Annotations of this start: 1 of 35
- Called 100.0% of time when present
- Phage (with cluster) where this start called: Shrew_95 (singleton),

Start 17:

- Found in 2 of 37 (5.4%) of genes in pham
- Manual Annotations of this start: 2 of 35
- Called 100.0% of time when present
- Phage (with cluster) where this start called: Barnyard_5 (H2), Predator_6 (H1),

Start 18:

- Found in 4 of 37 (10.8%) of genes in pham
- Manual Annotations of this start: 4 of 35
- Called 100.0% of time when present
- Phage (with cluster) where this start called: DrLupo_5 (H2), Fowlmouth_116 (AC), Indlulamithi_105 (AC), MrMiyagi_115 (AC),

Start 20:

- Found in 1 of 37 (2.7%) of genes in pham
- Manual Annotations of this start: 1 of 35
- Called 100.0% of time when present
- Phage (with cluster) where this start called: Magritte_248 (singleton),

Start 22:

- Found in 25 of 37 (67.6%) of genes in pham
- Manual Annotations of this start: 1 of 35
- Called 8.0% of time when present
- Phage (with cluster) where this start called: Tchotchke_81 (F1), ThetaBob_88 (F4),

Start 23:

- Found in 27 of 37 (73.0%) of genes in pham
- Manual Annotations of this start: 24 of 35
- Called 92.6% of time when present
- Phage (with cluster) where this start called: Aubs_87 (F1), Bipolar_88 (F1), Blexus_83 (F1), BodEinwohner17_95 (F1), Clank_84 (F), Dorothy_87 (F1), Doug_84

(F1), Gandalph_86 (F1), Inventum_84 (F1), IrishSherpFalk_86 (F1), JoeyJr_90 (F1), KristaRAM_87 (F1), Leperchaun_88 (F1), MadMen_92 (F1), Rabbs_64 (G1), Radiance_83 (F1), RedBird_87 (F1), SG4_89 (F1), Sassafras_88 (F1), Sneeze_63 (G1), Spikelee_87 (F1), Squirty_87 (F3), Stap_83 (F1), SuperGrey_87 (F1), WillSterrel_85 (F1),

Summary by clusters:

There are 10 clusters represented in this pham: F1, singleton, F3, F4, G1, F, H2, H1, AC, DJ,

Info for manual annotations of cluster AC:

- Start number 18 was manually annotated 3 times for cluster AC.

Info for manual annotations of cluster DJ:

- Start number 15 was manually annotated 2 times for cluster DJ.

Info for manual annotations of cluster F1:

- Start number 23 was manually annotated 21 times for cluster F1.

Info for manual annotations of cluster F3:

- Start number 23 was manually annotated 1 time for cluster F3.

Info for manual annotations of cluster F4:

- Start number 22 was manually annotated 1 time for cluster F4.

Info for manual annotations of cluster G1:

- Start number 23 was manually annotated 2 times for cluster G1.

Info for manual annotations of cluster H1:

- Start number 17 was manually annotated 1 time for cluster H1.

Info for manual annotations of cluster H2:

- Start number 17 was manually annotated 1 time for cluster H2.
- Start number 18 was manually annotated 1 time for cluster H2.

Gene Information:

Gene: Aubs_87 Start: 51186, Stop: 51539, Start Num: 23

Candidate Starts for Aubs_87:

(7, 51012), (8, 51021), (9, 51045), (11, 51063), (21, 51156), (Start: 22 @51165 has 1 MA's), (Start: 23 @51186 has 24 MA's), (43, 51342), (45, 51363), (54, 51414), (55, 51420),

Gene: Barnyard_5 Start: 2336, Stop: 2662, Start Num: 17

Candidate Starts for Barnyard_5:

(Start: 17 @2336 has 2 MA's), (25, 2396), (40, 2513), (43, 2534), (47, 2552), (49, 2561), (56, 2597), (66, 2651),

Gene: Bipolar_88 Start: 51911, Stop: 52264, Start Num: 23

Candidate Starts for Bipolar_88:

(21, 51881), (Start: 22 @51890 has 1 MA's), (Start: 23 @51911 has 24 MA's), (43, 52067), (45, 52088), (54, 52139), (55, 52145),

Gene: Blexus_83 Start: 50520, Stop: 50873, Start Num: 23

Candidate Starts for Blexus_83:

(21, 50490), (Start: 22 @50499 has 1 MA's), (Start: 23 @50520 has 24 MA's), (43, 50676), (45, 50697), (54, 50748), (55, 50754),

Gene: BodEinwohner17_95 Start: 52978, Stop: 53331, Start Num: 23

Candidate Starts for BodEinwohner17_95:

(21, 52948), (Start: 22 @52957 has 1 MA's), (Start: 23 @52978 has 24 MA's), (43, 53134), (45, 53155), (54, 53206), (55, 53212),

Gene: Clank_84 Start: 47495, Stop: 47848, Start Num: 23

Candidate Starts for Clank_84:

(21, 47465), (Start: 22 @47474 has 1 MA's), (Start: 23 @47495 has 24 MA's), (43, 47651), (45, 47672), (54, 47723), (55, 47729),

Gene: Dorothy_87 Start: 52163, Stop: 52516, Start Num: 23

Candidate Starts for Dorothy_87:

(7, 51989), (8, 51998), (9, 52022), (11, 52040), (21, 52133), (Start: 22 @52142 has 1 MA's), (Start: 23 @52163 has 24 MA's), (43, 52319), (45, 52340), (54, 52391), (55, 52397),

Gene: Doug_84 Start: 51219, Stop: 51512, Start Num: 23

Candidate Starts for Doug_84:

(21, 51189), (Start: 22 @51198 has 1 MA's), (Start: 23 @51219 has 24 MA's), (43, 51375), (45, 51396), (54, 51447), (55, 51453),

Gene: DrLupo_5 Start: 2304, Stop: 2633, Start Num: 18

Candidate Starts for DrLupo_5:

(Start: 18 @2304 has 4 MA's), (24, 2361), (29, 2394), (37, 2457), (40, 2481), (43, 2502), (58, 2571), (64, 2604), (67, 2622),

Gene: Fowlmouth_116 Start: 66878, Stop: 67264, Start Num: 18

Candidate Starts for Fowlmouth_116:

(14, 66869), (Start: 18 @66878 has 4 MA's), (25, 66941), (36, 67031), (41, 67061), (42, 67067), (44, 67088), (46, 67115), (48, 67127), (52, 67142), (62, 67202), (65, 67214),

Gene: Gandalph_86 Start: 47755, Stop: 48108, Start Num: 23

Candidate Starts for Gandalph_86:

(21, 47725), (Start: 22 @47734 has 1 MA's), (Start: 23 @47755 has 24 MA's), (43, 47911), (45, 47932), (54, 47983), (55, 47989),

Gene: Hortihabitatio_56 Start: 38133, Stop: 38495, Start Num: 15

Candidate Starts for Hortihabitatio_56:

(13, 38109), (Start: 15 @38133 has 2 MA's), (26, 38202), (27, 38205), (33, 38259), (53, 38382), (67, 38466),

Gene: Indlulamithi_105 Start: 68264, Stop: 68617, Start Num: 18

Candidate Starts for Indlulamithi_105:

(Start: 18 @68264 has 4 MA's), (24, 68324), (28, 68351), (34, 68402), (36, 68417), (39, 68432), (48, 68489), (69, 68600), (70, 68603),

Gene: Inventum_84 Start: 50348, Stop: 50701, Start Num: 23

Candidate Starts for Inventum_84:

(7, 50174), (8, 50183), (9, 50207), (11, 50225), (21, 50318), (Start: 22 @50327 has 1 MA's), (Start: 23 @50348 has 24 MA's), (43, 50504), (45, 50525), (54, 50576), (55, 50582),

Gene: IrishSherpFalk_86 Start: 50711, Stop: 51064, Start Num: 23

Candidate Starts for IrishSherpFalk_86:

(21, 50681), (Start: 22 @50690 has 1 MA's), (Start: 23 @50711 has 24 MA's), (43, 50867), (45, 50888), (54, 50939), (55, 50945),

Gene: JoeyJr_90 Start: 52257, Stop: 52610, Start Num: 23

Candidate Starts for JoeyJr_90:

(7, 52083), (8, 52092), (9, 52116), (11, 52134), (21, 52227), (Start: 22 @52236 has 1 MA's), (Start: 23 @52257 has 24 MA's), (43, 52413), (45, 52434), (54, 52485), (55, 52491),

Gene: KristaRAM_87 Start: 49995, Stop: 50348, Start Num: 23

Candidate Starts for KristaRAM_87:

(7, 49821), (8, 49830), (9, 49854), (21, 49965), (Start: 22 @49974 has 1 MA's), (Start: 23 @49995 has 24 MA's), (43, 50151), (45, 50172), (54, 50223), (55, 50229),

Gene: Leperchaun_88 Start: 51491, Stop: 51844, Start Num: 23

Candidate Starts for Leperchaun_88:

(7, 51317), (8, 51326), (9, 51350), (11, 51368), (21, 51461), (Start: 22 @51470 has 1 MA's), (Start: 23 @51491 has 24 MA's), (43, 51647), (45, 51668), (54, 51719), (55, 51725),

Gene: MadMen_92 Start: 50974, Stop: 51327, Start Num: 23

Candidate Starts for MadMen_92:

(11, 50851), (21, 50944), (Start: 22 @50953 has 1 MA's), (Start: 23 @50974 has 24 MA's), (43, 51130), (45, 51151), (54, 51202), (55, 51208),

Gene: Magritte_248 Start: 129666, Stop: 129316, Start Num: 20

Candidate Starts for Magritte_248:

(Start: 20 @129666 has 1 MA's), (27, 129597), (31, 129579), (57, 129405), (63, 129372),

Gene: MajinBuu_55 Start: 38365, Stop: 38727, Start Num: 15

Candidate Starts for MajinBuu_55:

(Start: 15 @38365 has 2 MA's), (27, 38437), (33, 38491), (48, 38596), (60, 38656), (61, 38671), (71, 38722),

Gene: MrMiyagi_115 Start: 67159, Stop: 67545, Start Num: 18

Candidate Starts for MrMiyagi_115:

(14, 67150), (Start: 18 @67159 has 4 MA's), (25, 67222), (36, 67312), (41, 67342), (42, 67348), (44, 67369), (46, 67396), (48, 67408), (52, 67423), (65, 67495),

Gene: Predator_6 Start: 2730, Stop: 3125, Start Num: 17

Candidate Starts for Predator_6:

(Start: 17 @2730 has 2 MA's), (30, 2826), (37, 2883), (39, 2895), (46, 2961), (48, 2973), (51, 2982),

Gene: Rabbs_64 Start: 41559, Stop: 41918, Start Num: 23

Candidate Starts for Rabbs_64:

(6, 41364), (10, 41421), (12, 41445), (Start: 23 @41559 has 24 MA's), (35, 41667), (38, 41685), (68, 41871),

Gene: Radiance_83 Start: 50015, Stop: 50368, Start Num: 23

Candidate Starts for Radiance_83:

(11, 49892), (21, 49985), (Start: 22 @49994 has 1 MA's), (Start: 23 @50015 has 24 MA's), (43, 50171), (45, 50192), (54, 50243), (55, 50249),

Gene: RedBird_87 Start: 52033, Stop: 52386, Start Num: 23

Candidate Starts for RedBird_87:

(7, 51859), (8, 51868), (9, 51892), (11, 51910), (21, 52003), (Start: 22 @52012 has 1 MA's), (Start: 23 @52033 has 24 MA's), (43, 52189), (45, 52210), (54, 52261), (55, 52267),

Gene: SG4_89 Start: 51636, Stop: 51989, Start Num: 23

Candidate Starts for SG4_89:

(1, 51333), (2, 51354), (3, 51372), (4, 51381), (5, 51438), (7, 51462), (8, 51471), (9, 51495), (11, 51513), (21, 51606), (Start: 22 @51615 has 1 MA's), (Start: 23 @51636 has 24 MA's), (43, 51792), (45, 51813), (54, 51864), (55, 51870),

Gene: Sassafras_88 Start: 50347, Stop: 50700, Start Num: 23

Candidate Starts for Sassafras_88:

(7, 50173), (8, 50182), (9, 50206), (11, 50224), (21, 50317), (Start: 22 @50326 has 1 MA's), (Start: 23 @50347 has 24 MA's), (43, 50503), (45, 50524), (54, 50575), (55, 50581),

Gene: Shrew_95 Start: 56440, Stop: 56838, Start Num: 16

Candidate Starts for Shrew_95:

(Start: 16 @56440 has 1 MA's), (19, 56446), (32, 56551), (43, 56638), (50, 56689), (51, 56692), (59, 56749),

Gene: Sneeze_63 Start: 41558, Stop: 41917, Start Num: 23

Candidate Starts for Sneeze_63:

(6, 41363), (10, 41420), (12, 41444), (Start: 23 @41558 has 24 MA's), (35, 41666), (38, 41684), (68, 41870),

Gene: Spikelee_87 Start: 51332, Stop: 51685, Start Num: 23

Candidate Starts for Spikelee_87:

(7, 51158), (8, 51167), (9, 51191), (11, 51209), (21, 51302), (Start: 22 @51311 has 1 MA's), (Start: 23 @51332 has 24 MA's), (43, 51488), (45, 51509), (54, 51560), (55, 51566), (61, 51605),

Gene: Squirty_87 Start: 54281, Stop: 54634, Start Num: 23

Candidate Starts for Squirty_87:

(7, 54107), (8, 54116), (9, 54140), (11, 54158), (21, 54251), (Start: 22 @54260 has 1 MA's), (Start: 23 @54281 has 24 MA's), (43, 54437), (45, 54458), (54, 54509), (55, 54515),

Gene: Stap_83 Start: 47996, Stop: 48349, Start Num: 23

Candidate Starts for Stap_83:

(7, 47822), (8, 47831), (9, 47855), (11, 47873), (21, 47966), (Start: 22 @47975 has 1 MA's), (Start: 23 @47996 has 24 MA's), (43, 48152), (45, 48173), (54, 48224), (55, 48230),

Gene: SuperGrey_87 Start: 52503, Stop: 52856, Start Num: 23

Candidate Starts for SuperGrey_87:

(21, 52473), (Start: 22 @52482 has 1 MA's), (Start: 23 @52503 has 24 MA's), (43, 52659), (45, 52680), (54, 52731), (55, 52737),

Gene: Tchotchke_81 Start: 49110, Stop: 49484, Start Num: 22

Candidate Starts for Tchotchke_81:

(11, 49008), (21, 49101), (Start: 22 @49110 has 1 MA's), (Start: 23 @49131 has 24 MA's), (43, 49287), (45, 49308), (54, 49359), (55, 49365), (61, 49404),

Gene: ThetaBob_88 Start: 49589, Stop: 49963, Start Num: 22

Candidate Starts for ThetaBob_88:

(11, 49487), (21, 49580), (Start: 22 @49589 has 1 MA's), (Start: 23 @49610 has 24 MA's), (43, 49766), (45, 49787), (54, 49838), (55, 49844),

Gene: WillSterrel_85 Start: 50744, Stop: 51097, Start Num: 23

Candidate Starts for WillSterrel_85:

(21, 50714), (Start: 22 @50723 has 1 MA's), (Start: 23 @50744 has 24 MA's), (43, 50900), (45, 50921), (54, 50972), (55, 50978),