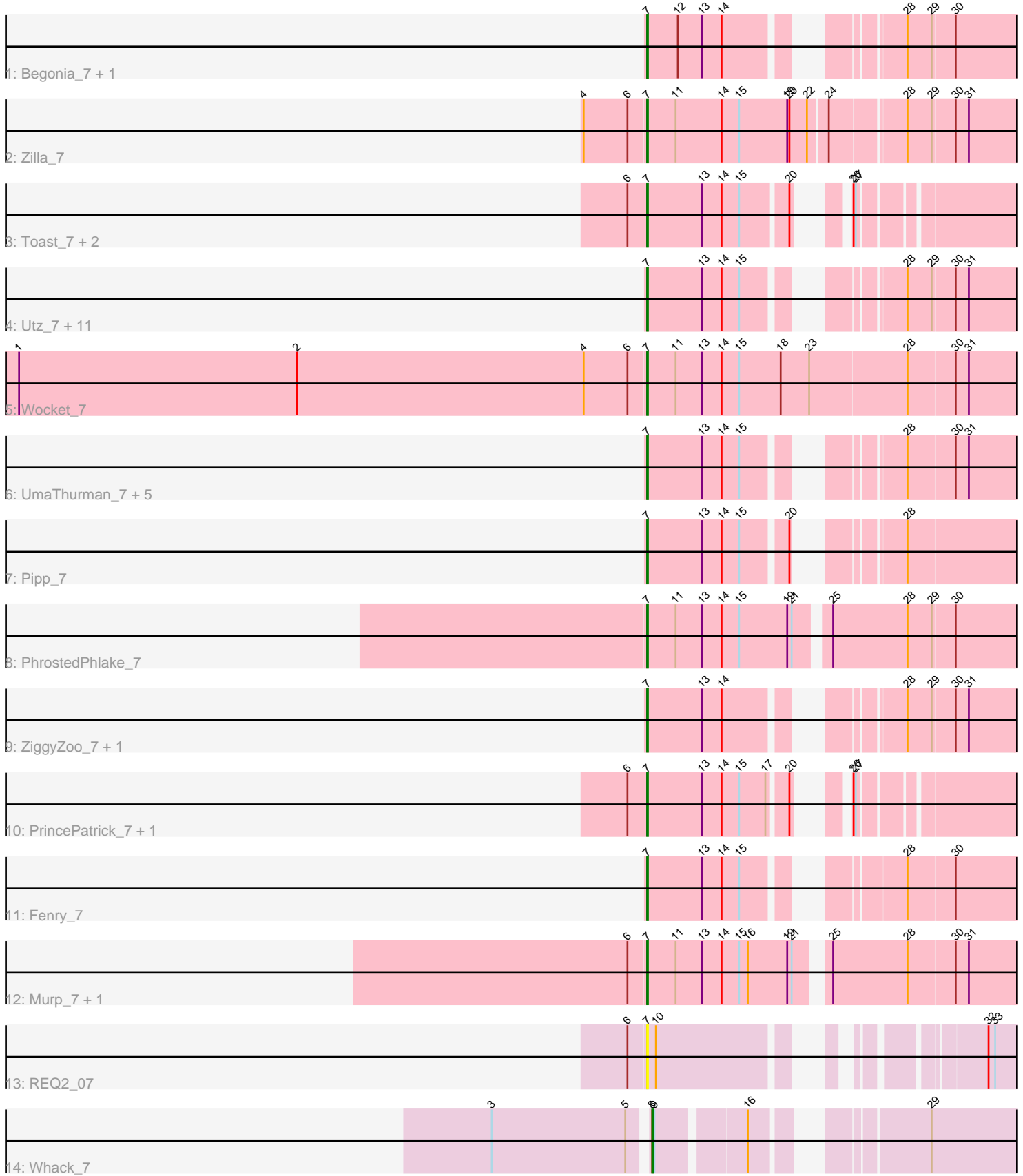


Pham 305177



Note: Tracks are now grouped by subcluster and scaled. Switching in subcluster is indicated by changes in track color. Track scale is now set by default to display the region 30 bp upstream of start 1 to 30 bp downstream of the last possible start. If this default region is judged to be packed too tightly with annotated starts, the track will be further scaled to only show that region of the ORF with annotated starts. This action will be indicated by adding "Zoomed" to the title. For starts, yellow indicates the location of called starts comprised solely of Glimmer/GeneMark auto-annotations, green indicates the location of called starts with at least 1 manual gene annotation.

## Pham 305177 Report

This analysis was run 06/08/26 on database version 649.

Pham number 305177 has 36 members, 2 are drafts.

Phages represented in each track:

- Track 1 : Begonia\_7, Malachai\_7
- Track 2 : Zilla\_7
- Track 3 : Toast\_7, William\_7, PCoral7\_7
- Track 4 : Utz\_7, Barco\_7, BlingBling\_7, CaptainKirk2\_7, MintFen\_7, Lysidious\_7, JasperJr\_7, Guacamole\_7, Wisp\_7, Zarbodnamra\_7, Melba\_7, Delian\_7
- Track 5 : Wocket\_7
- Track 6 : UmaThurman\_7, Mellie\_7, Samba\_7, Archis\_7, Jalammah\_7, Hitter\_7
- Track 7 : Pipp\_7
- Track 8 : PhrostedPhlake\_7
- Track 9 : ZiggyZoo\_7, Obliviate\_7
- Track 10 : PrincePatrick\_7, Fairfaxidum\_7
- Track 11 : Fenry\_7
- Track 12 : Murp\_7, KappaFarmDelta\_7
- Track 13 : REQ2\_07
- Track 14 : Whack\_7

### ***Summary of Final Annotations (See graph section above for start numbers):***

The start number called the most often in the published annotations is 7, it was called in 33 of the 34 non-draft genes in the pham.

Genes that call this "Most Annotated" start:

- Archis\_7, Barco\_7, Begonia\_7, BlingBling\_7, CaptainKirk2\_7, Delian\_7, Fairfaxidum\_7, Fenry\_7, Guacamole\_7, Hitter\_7, Jalammah\_7, JasperJr\_7, KappaFarmDelta\_7, Lysidious\_7, Malachai\_7, Melba\_7, Mellie\_7, MintFen\_7, Murp\_7, Obliviate\_7, PCoral7\_7, PhrostedPhlake\_7, Pipp\_7, PrincePatrick\_7, REQ2\_07, Samba\_7, Toast\_7, UmaThurman\_7, Utz\_7, William\_7, Wisp\_7, Wocket\_7, Zarbodnamra\_7, ZiggyZoo\_7, Zilla\_7,

Genes that have the "Most Annotated" start but do not call it:

- 

Genes that do not have the "Most Annotated" start:

- Whack\_7,

## Summary by start number:

### Start 7:

- Found in 35 of 36 ( 97.2% ) of genes in pham
- Manual Annotations of this start: 33 of 34
- Called 100.0% of time when present
- Phage (with cluster) where this start called: Archis\_7 (CV), Barco\_7 (CV), Begonia\_7 (CV), BlingBling\_7 (CV), CaptainKirk2\_7 (CV), Delian\_7 (CV), Fairfaxidum\_7 (CV), Ferry\_7 (CV), Guacamole\_7 (CV), Hitter\_7 (CV), Jalammah\_7 (CV), JasperJr\_7 (CV), KappaFarmDelta\_7 (CV), Lysidious\_7 (CV), Malachai\_7 (CV), Melba\_7 (CV), Mellie\_7 (CV), MintFen\_7 (CV), Murp\_7 (CV), Obliviate\_7 (CV), PCoral7\_7 (CV), PhrostedPhlake\_7 (CV), Pipp\_7 (CV), PrincePatrick\_7 (CV), REQ2\_07 (singleton), Samba\_7 (CV), Toast\_7 (CV), UmaThurman\_7 (CV), Utz\_7 (CV), William\_7 (CV), Wisp\_7 (CV), Wocket\_7 (CV), Zarbodnamra\_7 (CV), ZiggyZoo\_7 (CV), Zilla\_7 (CV),

### Start 8:

- Found in 1 of 36 ( 2.8% ) of genes in pham
- Manual Annotations of this start: 1 of 34
- Called 100.0% of time when present
- Phage (with cluster) where this start called: Whack\_7 (singleton),

## Summary by clusters:

There are 2 clusters represented in this pham: singleton, CV,

Info for manual annotations of cluster CV:

- Start number 7 was manually annotated 33 times for cluster CV.

## Gene Information:

Gene: Archis\_7 Start: 6142, Stop: 6570, Start Num: 7

Candidate Starts for Archis\_7:

(Start: 7 @6142 has 33 MA's), (13, 6217), (14, 6244), (15, 6268), (28, 6418), (30, 6481), (31, 6499),

Gene: Barco\_7 Start: 6142, Stop: 6570, Start Num: 7

Candidate Starts for Barco\_7:

(Start: 7 @6142 has 33 MA's), (13, 6217), (14, 6244), (15, 6268), (28, 6418), (29, 6451), (30, 6481), (31, 6499),

Gene: Begonia\_7 Start: 6145, Stop: 6573, Start Num: 7

Candidate Starts for Begonia\_7:

(Start: 7 @6145 has 33 MA's), (12, 6187), (13, 6220), (14, 6247), (28, 6421), (29, 6454), (30, 6484),

Gene: BlingBling\_7 Start: 6142, Stop: 6570, Start Num: 7

Candidate Starts for BlingBling\_7:

(Start: 7 @6142 has 33 MA's), (13, 6217), (14, 6244), (15, 6268), (28, 6418), (29, 6451), (30, 6481), (31, 6499),

Gene: CaptainKirk2\_7 Start: 6142, Stop: 6570, Start Num: 7

Candidate Starts for CaptainKirk2\_7:

(Start: 7 @6142 has 33 MA's), (13, 6217), (14, 6244), (15, 6268), (28, 6418), (29, 6451), (30, 6481), (31, 6499),

Gene: Delian\_7 Start: 6142, Stop: 6570, Start Num: 7

Candidate Starts for Delian\_7:

(Start: 7 @6142 has 33 MA's), (13, 6217), (14, 6244), (15, 6268), (28, 6418), (29, 6451), (30, 6481), (31, 6499),

Gene: Fairfaxidum\_7 Start: 6141, Stop: 6554, Start Num: 7

Candidate Starts for Fairfaxidum\_7:

(6, 6114), (Start: 7 @6141 has 33 MA's), (13, 6216), (14, 6243), (15, 6267), (17, 6303), (20, 6327), (26, 6354), (27, 6357),

Gene: Fenry\_7 Start: 6145, Stop: 6579, Start Num: 7

Candidate Starts for Fenry\_7:

(Start: 7 @6145 has 33 MA's), (13, 6220), (14, 6247), (15, 6271), (28, 6427), (30, 6490),

Gene: Guacamole\_7 Start: 6146, Stop: 6574, Start Num: 7

Candidate Starts for Guacamole\_7:

(Start: 7 @6146 has 33 MA's), (13, 6221), (14, 6248), (15, 6272), (28, 6422), (29, 6455), (30, 6485), (31, 6503),

Gene: Hitter\_7 Start: 6142, Stop: 6570, Start Num: 7

Candidate Starts for Hitter\_7:

(Start: 7 @6142 has 33 MA's), (13, 6217), (14, 6244), (15, 6268), (28, 6418), (30, 6481), (31, 6499),

Gene: Jalammah\_7 Start: 6142, Stop: 6570, Start Num: 7

Candidate Starts for Jalammah\_7:

(Start: 7 @6142 has 33 MA's), (13, 6217), (14, 6244), (15, 6268), (28, 6418), (30, 6481), (31, 6499),

Gene: JasperJr\_7 Start: 6146, Stop: 6574, Start Num: 7

Candidate Starts for JasperJr\_7:

(Start: 7 @6146 has 33 MA's), (13, 6221), (14, 6248), (15, 6272), (28, 6422), (29, 6455), (30, 6485), (31, 6503),

Gene: KappaFarmDelta\_7 Start: 6123, Stop: 6608, Start Num: 7

Candidate Starts for KappaFarmDelta\_7:

(6, 6099), (Start: 7 @6123 has 33 MA's), (11, 6162), (13, 6198), (14, 6225), (15, 6249), (16, 6261), (19, 6315), (21, 6321), (25, 6354), (28, 6456), (30, 6519), (31, 6537),

Gene: Lysidious\_7 Start: 6142, Stop: 6570, Start Num: 7

Candidate Starts for Lysidious\_7:

(Start: 7 @6142 has 33 MA's), (13, 6217), (14, 6244), (15, 6268), (28, 6418), (29, 6451), (30, 6481), (31, 6499),

Gene: Malachai\_7 Start: 6145, Stop: 6573, Start Num: 7

Candidate Starts for Malachai\_7:

(Start: 7 @6145 has 33 MA's), (12, 6187), (13, 6220), (14, 6247), (28, 6421), (29, 6454), (30, 6484),

Gene: Melba\_7 Start: 6142, Stop: 6570, Start Num: 7

Candidate Starts for Melba\_7:

(Start: 7 @6142 has 33 MA's), (13, 6217), (14, 6244), (15, 6268), (28, 6418), (29, 6451), (30, 6481), (31, 6499),

Gene: Mellie\_7 Start: 6142, Stop: 6570, Start Num: 7  
Candidate Starts for Mellie\_7:  
(Start: 7 @6142 has 33 MA's), (13, 6217), (14, 6244), (15, 6268), (28, 6418), (30, 6481), (31, 6499),

Gene: MintFen\_7 Start: 6142, Stop: 6570, Start Num: 7  
Candidate Starts for MintFen\_7:  
(Start: 7 @6142 has 33 MA's), (13, 6217), (14, 6244), (15, 6268), (28, 6418), (29, 6451), (30, 6481),  
(31, 6499),

Gene: Murp\_7 Start: 6126, Stop: 6611, Start Num: 7  
Candidate Starts for Murp\_7:  
(6, 6102), (Start: 7 @6126 has 33 MA's), (11, 6165), (13, 6201), (14, 6228), (15, 6252), (16, 6264), (19,  
6318), (21, 6324), (25, 6357), (28, 6459), (30, 6522), (31, 6540),

Gene: Obliviate\_7 Start: 6166, Stop: 6594, Start Num: 7  
Candidate Starts for Obliviate\_7:  
(Start: 7 @6166 has 33 MA's), (13, 6241), (14, 6268), (28, 6442), (29, 6475), (30, 6505), (31, 6523),

Gene: PCoral7\_7 Start: 6141, Stop: 6554, Start Num: 7  
Candidate Starts for PCoral7\_7:  
(6, 6114), (Start: 7 @6141 has 33 MA's), (13, 6216), (14, 6243), (15, 6267), (20, 6327), (26, 6354), (27,  
6357),

Gene: PhrostedPhlake\_7 Start: 6160, Stop: 6651, Start Num: 7  
Candidate Starts for PhrostedPhlake\_7:  
(Start: 7 @6160 has 33 MA's), (11, 6199), (13, 6235), (14, 6262), (15, 6286), (19, 6352), (21, 6358),  
(25, 6397), (28, 6499), (29, 6532), (30, 6562),

Gene: Pipp\_7 Start: 6166, Stop: 6594, Start Num: 7  
Candidate Starts for Pipp\_7:  
(Start: 7 @6166 has 33 MA's), (13, 6241), (14, 6268), (15, 6292), (20, 6349), (28, 6442),

Gene: PrincePatrick\_7 Start: 6142, Stop: 6555, Start Num: 7  
Candidate Starts for PrincePatrick\_7:  
(6, 6115), (Start: 7 @6142 has 33 MA's), (13, 6217), (14, 6244), (15, 6268), (17, 6304), (20, 6328), (26,  
6355), (27, 6358),

Gene: REQ2\_07 Start: 5849, Stop: 6256, Start Num: 7  
Candidate Starts for REQ2\_07:  
(6, 5825), (Start: 7 @5849 has 33 MA's), (10, 5861), (32, 6194), (33, 6203),

Gene: Samba\_7 Start: 6143, Stop: 6571, Start Num: 7  
Candidate Starts for Samba\_7:  
(Start: 7 @6143 has 33 MA's), (13, 6218), (14, 6245), (15, 6269), (28, 6419), (30, 6482), (31, 6500),

Gene: Toast\_7 Start: 6141, Stop: 6554, Start Num: 7  
Candidate Starts for Toast\_7:  
(6, 6114), (Start: 7 @6141 has 33 MA's), (13, 6216), (14, 6243), (15, 6267), (20, 6327), (26, 6354), (27,  
6357),

Gene: UmaThurman\_7 Start: 6142, Stop: 6570, Start Num: 7  
Candidate Starts for UmaThurman\_7:

(Start: 7 @6142 has 33 MA's), (13, 6217), (14, 6244), (15, 6268), (28, 6418), (30, 6481), (31, 6499),

Gene: Utz\_7 Start: 6142, Stop: 6570, Start Num: 7

Candidate Starts for Utz\_7:

(Start: 7 @6142 has 33 MA's), (13, 6217), (14, 6244), (15, 6268), (28, 6418), (29, 6451), (30, 6481), (31, 6499),

Gene: Whack\_7 Start: 5839, Stop: 6255, Start Num: 8

Candidate Starts for Whack\_7:

(3, 5635), (5, 5818), (Start: 8 @5839 has 1 MA's), (9, 5842), (16, 5950), (29, 6127),

Gene: William\_7 Start: 6141, Stop: 6569, Start Num: 7

Candidate Starts for William\_7:

(6, 6114), (Start: 7 @6141 has 33 MA's), (13, 6216), (14, 6243), (15, 6267), (20, 6327), (26, 6369), (27, 6372),

Gene: Wisp\_7 Start: 6142, Stop: 6570, Start Num: 7

Candidate Starts for Wisp\_7:

(Start: 7 @6142 has 33 MA's), (13, 6217), (14, 6244), (15, 6268), (28, 6418), (29, 6451), (30, 6481), (31, 6499),

Gene: Wocket\_7 Start: 6129, Stop: 6635, Start Num: 7

Candidate Starts for Wocket\_7:

(1, 5271), (2, 5652), (4, 6045), (6, 6105), (Start: 7 @6129 has 33 MA's), (11, 6168), (13, 6204), (14, 6231), (15, 6255), (18, 6312), (23, 6351), (28, 6483), (30, 6546), (31, 6564),

Gene: Zarbodnamra\_7 Start: 6141, Stop: 6569, Start Num: 7

Candidate Starts for Zarbodnamra\_7:

(Start: 7 @6141 has 33 MA's), (13, 6216), (14, 6243), (15, 6267), (28, 6417), (29, 6450), (30, 6480), (31, 6498),

Gene: ZiggyZoo\_7 Start: 6166, Stop: 6594, Start Num: 7

Candidate Starts for ZiggyZoo\_7:

(Start: 7 @6166 has 33 MA's), (13, 6241), (14, 6268), (28, 6442), (29, 6475), (30, 6505), (31, 6523),

Gene: Zilla\_7 Start: 6131, Stop: 6622, Start Num: 7

Candidate Starts for Zilla\_7:

(4, 6047), (6, 6107), (Start: 7 @6131 has 33 MA's), (11, 6170), (14, 6233), (15, 6257), (19, 6323), (20, 6326), (22, 6350), (24, 6374), (28, 6470), (29, 6503), (30, 6533), (31, 6551),