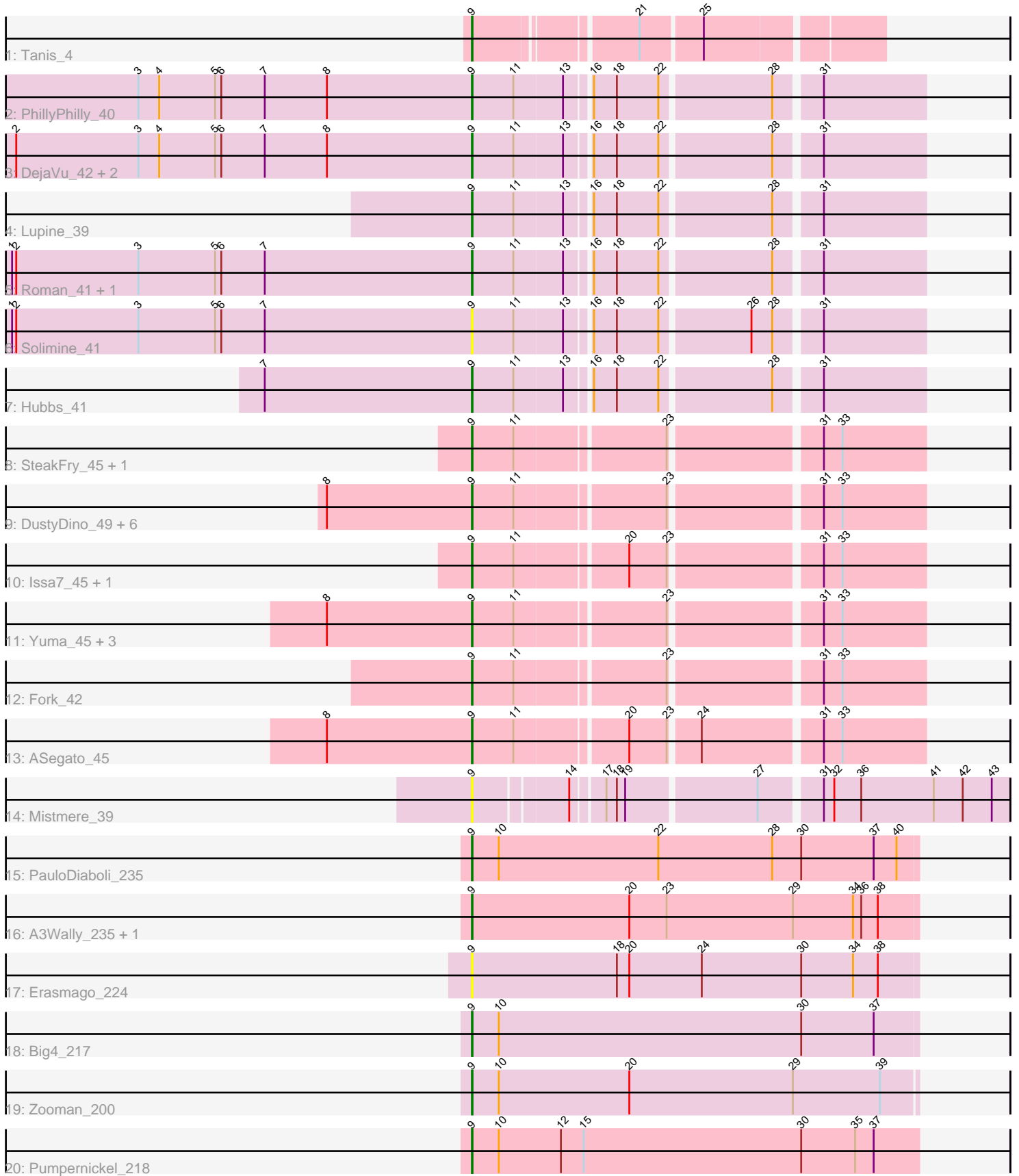


Pham 305179



Note: Tracks are now grouped by subcluster and scaled. Switching in subcluster is indicated by changes in track color. Track scale is now set by default to display the region 30 bp upstream of start 1 to 30 bp downstream of the last possible start. If this default region is judged to be packed too tightly with annotated starts, the track will be further scaled to only show that region of the ORF with annotated starts. This action will be indicated by adding "Zoomed" to the title. For starts, yellow indicates the location of called starts comprised solely of Glimmer/GeneMark auto-annotations, green indicates the location of called starts with at least 1 manual gene annotation.

Pham 305179 Report

This analysis was run 06/08/26 on database version 649.

Pham number 305179 has 35 members, 9 are drafts.

Phages represented in each track:

- Track 1 : Tanis_4
- Track 2 : PhillyPhilly_40
- Track 3 : DejaVu_42, Pavlo_39, Uterion_43
- Track 4 : Lupine_39
- Track 5 : Roman_41, Saradis_41
- Track 6 : Solimine_41
- Track 7 : Hubbs_41
- Track 8 : SteakFry_45, HollowPurple_47
- Track 9 : DustyDino_49, Welcome_47, Deschain_47, Lyell_46, RunningBrook_47, StevieWelch_46, Necrophoxinus_48
- Track 10 : Issa7_45, Musetta_46
- Track 11 : Yuma_45, Casablanacas_47, Erenyeager_46, Shroomer_49
- Track 12 : Fork_42
- Track 13 : ASegato_45
- Track 14 : Mistmere_39
- Track 15 : PauloDiaboli_235
- Track 16 : A3Wally_235, Dodo_231
- Track 17 : Erasmago_224
- Track 18 : Big4_217
- Track 19 : Zooman_200
- Track 20 : Pumpernickel_218

Summary of Final Annotations (See graph section above for start numbers):

The start number called the most often in the published annotations is 9, it was called in 26 of the 26 non-draft genes in the pham.

Genes that call this "Most Annotated" start:

- A3Wally_235, ASegato_45, Big4_217, Casablanacas_47, DejaVu_42, Deschain_47, Dodo_231, DustyDino_49, Erasmago_224, Erenyeager_46, Fork_42, HollowPurple_47, Hubbs_41, Issa7_45, Lupine_39, Lyell_46, Mistmere_39, Musetta_46, Necrophoxinus_48, PauloDiaboli_235, Pavlo_39, PhillyPhilly_40, Pumpernickel_218, Roman_41, RunningBrook_47, Saradis_41, Shroomer_49, Solimine_41, SteakFry_45, StevieWelch_46, Tanis_4, Uterion_43, Welcome_47,

Yuma_45, Zooman_200,

Genes that have the "Most Annotated" start but do not call it:

-

Genes that do not have the "Most Annotated" start:

-

Summary by start number:

Start 9:

- Found in 35 of 35 (100.0%) of genes in pham
- Manual Annotations of this start: 26 of 26
- Called 100.0% of time when present
- Phage (with cluster) where this start called: A3Wally_235 (GD1), ASegato_45 (ED2), Big4_217 (GD2), Casablanacas_47 (ED2), DejaVu_42 (ED1), Deschain_47 (ED2), Dodo_231 (GD1), DustyDino_49 (ED2), Erasmago_224 (GD2), Erenyeager_46 (ED2), Fork_42 (ED2), HollowPurple_47 (ED2), Hubbs_41 (ED1), Issa7_45 (ED2), Lupine_39 (ED1), Lyell_46 (ED2), Mistmere_39 (ED3), Musetta_46 (ED2), Necrophoxinus_48 (ED2), PauloDiaboli_235 (GD1), Pavlo_39 (ED1), PhillyPhilly_40 (ED1), Pumpernickel_218 (GD4), Roman_41 (ED1), RunningBrook_47 (ED2), Saradis_41 (ED1), Shroomer_49 (ED2), Solimine_41 (ED1), SteakFry_45 (ED2), StevieWelch_46 (ED2), Tanis_4 (DJ), Uterion_43 (ED1), Welcome_47 (ED2), Yuma_45 (ED2), Zooman_200 (GD2),

Summary by clusters:

There are 7 clusters represented in this pham: GD1, GD2, GD4, ED2, ED3, ED1, DJ,

Info for manual annotations of cluster DJ:

- Start number 9 was manually annotated 1 time for cluster DJ.

Info for manual annotations of cluster ED1:

- Start number 9 was manually annotated 6 times for cluster ED1.

Info for manual annotations of cluster ED2:

- Start number 9 was manually annotated 13 times for cluster ED2.

Info for manual annotations of cluster GD1:

- Start number 9 was manually annotated 3 times for cluster GD1.

Info for manual annotations of cluster GD2:

- Start number 9 was manually annotated 2 times for cluster GD2.

Info for manual annotations of cluster GD4:

- Start number 9 was manually annotated 1 time for cluster GD4.

Gene Information:

Gene: A3Wally_235 Start: 125991, Stop: 126635, Start Num: 9

Candidate Starts for A3Wally_235:

(Start: 9 @125991 has 26 MA's), (20, 126219), (23, 126273), (29, 126456), (34, 126543), (36, 126555), (38, 126579),

Gene: ASegato_45 Start: 19908, Stop: 20519, Start Num: 9

Candidate Starts for ASegato_45:

(8, 19698), (Start: 9 @19908 has 26 MA's), (11, 19968), (20, 20118), (23, 20172), (24, 20211), (31, 20373), (33, 20400),

Gene: Big4_217 Start: 121400, Stop: 122044, Start Num: 9

Candidate Starts for Big4_217:

(Start: 9 @121400 has 26 MA's), (10, 121439), (30, 121877), (37, 121982),

Gene: Casablancas_47 Start: 19992, Stop: 20603, Start Num: 9

Candidate Starts for Casablancas_47:

(8, 19782), (Start: 9 @19992 has 26 MA's), (11, 20052), (23, 20256), (31, 20457), (33, 20484),

Gene: DejaVu_42 Start: 19157, Stop: 19768, Start Num: 9

Candidate Starts for DejaVu_42:

(2, 18497), (3, 18674), (4, 18704), (5, 18785), (6, 18794), (7, 18857), (8, 18947), (Start: 9 @19157 has 26 MA's), (11, 19217), (13, 19286), (16, 19316), (18, 19349), (22, 19409), (28, 19562), (31, 19622),

Gene: Deschain_47 Start: 20656, Stop: 21267, Start Num: 9

Candidate Starts for Deschain_47:

(8, 20446), (Start: 9 @20656 has 26 MA's), (11, 20716), (23, 20920), (31, 21121), (33, 21148),

Gene: Dodo_231 Start: 125793, Stop: 126437, Start Num: 9

Candidate Starts for Dodo_231:

(Start: 9 @125793 has 26 MA's), (20, 126021), (23, 126075), (29, 126258), (34, 126345), (36, 126357), (38, 126381),

Gene: DustyDino_49 Start: 20847, Stop: 21458, Start Num: 9

Candidate Starts for DustyDino_49:

(8, 20637), (Start: 9 @20847 has 26 MA's), (11, 20907), (23, 21111), (31, 21312), (33, 21339),

Gene: Erasmago_224 Start: 120337, Stop: 120981, Start Num: 9

Candidate Starts for Erasmago_224:

(Start: 9 @120337 has 26 MA's), (18, 120547), (20, 120565), (24, 120670), (30, 120814), (34, 120889), (38, 120925),

Gene: Erenyeager_46 Start: 20242, Stop: 20853, Start Num: 9

Candidate Starts for Erenyeager_46:

(8, 20032), (Start: 9 @20242 has 26 MA's), (11, 20302), (23, 20506), (31, 20707), (33, 20734),

Gene: Fork_42 Start: 19557, Stop: 20168, Start Num: 9

Candidate Starts for Fork_42:

(Start: 9 @19557 has 26 MA's), (11, 19617), (23, 19821), (31, 20022), (33, 20049),

Gene: HollowPurple_47 Start: 20110, Stop: 20721, Start Num: 9

Candidate Starts for HollowPurple_47:

(Start: 9 @20110 has 26 MA's), (11, 20170), (23, 20374), (31, 20575), (33, 20602),

Gene: Hubbs_41 Start: 19369, Stop: 19980, Start Num: 9

Candidate Starts for Hubbs_41:

(7, 19069), (Start: 9 @19369 has 26 MA's), (11, 19429), (13, 19498), (16, 19528), (18, 19561), (22, 19621), (28, 19774), (31, 19834),

Gene: Issa7_45 Start: 19563, Stop: 20174, Start Num: 9

Candidate Starts for Issa7_45:

(Start: 9 @19563 has 26 MA's), (11, 19623), (20, 19773), (23, 19827), (31, 20028), (33, 20055),

Gene: Lupine_39 Start: 18570, Stop: 19181, Start Num: 9

Candidate Starts for Lupine_39:

(Start: 9 @18570 has 26 MA's), (11, 18630), (13, 18699), (16, 18729), (18, 18762), (22, 18822), (28, 18975), (31, 19035),

Gene: Lyell_46 Start: 20161, Stop: 20772, Start Num: 9

Candidate Starts for Lyell_46:

(8, 19951), (Start: 9 @20161 has 26 MA's), (11, 20221), (23, 20425), (31, 20626), (33, 20653),

Gene: Mistmere_39 Start: 18720, Stop: 19445, Start Num: 9

Candidate Starts for Mistmere_39:

(Start: 9 @18720 has 26 MA's), (14, 18846), (17, 18888), (18, 18903), (19, 18915), (27, 19095), (31, 19176), (32, 19191), (36, 19230), (41, 19335), (42, 19377), (43, 19419),

Gene: Musetta_46 Start: 20279, Stop: 20890, Start Num: 9

Candidate Starts for Musetta_46:

(Start: 9 @20279 has 26 MA's), (11, 20339), (20, 20489), (23, 20543), (31, 20744), (33, 20771),

Gene: Necrophoxinus_48 Start: 20855, Stop: 21466, Start Num: 9

Candidate Starts for Necrophoxinus_48:

(8, 20645), (Start: 9 @20855 has 26 MA's), (11, 20915), (23, 21119), (31, 21320), (33, 21347),

Gene: PauloDiaboli_235 Start: 124195, Stop: 124839, Start Num: 9

Candidate Starts for PauloDiaboli_235:

(Start: 9 @124195 has 26 MA's), (10, 124234), (22, 124465), (28, 124630), (30, 124672), (37, 124777), (40, 124810),

Gene: Pavlo_39 Start: 18848, Stop: 19459, Start Num: 9

Candidate Starts for Pavlo_39:

(2, 18188), (3, 18365), (4, 18395), (5, 18476), (6, 18485), (7, 18548), (8, 18638), (Start: 9 @18848 has 26 MA's), (11, 18908), (13, 18977), (16, 19007), (18, 19040), (22, 19100), (28, 19253), (31, 19313),

Gene: PhillyPhilly_40 Start: 18750, Stop: 19361, Start Num: 9

Candidate Starts for PhillyPhilly_40:

(3, 18267), (4, 18297), (5, 18378), (6, 18387), (7, 18450), (8, 18540), (Start: 9 @18750 has 26 MA's), (11, 18810), (13, 18879), (16, 18909), (18, 18942), (22, 19002), (28, 19155), (31, 19215),

Gene: Pumpernickel_218 Start: 125283, Stop: 125930, Start Num: 9

Candidate Starts for Pumpernickel_218:

(Start: 9 @125283 has 26 MA's), (10, 125322), (12, 125412), (15, 125445), (30, 125760), (35, 125838), (37, 125865),

Gene: Roman_41 Start: 19216, Stop: 19827, Start Num: 9

Candidate Starts for Roman_41:

(1, 18550), (2, 18556), (3, 18733), (5, 18844), (6, 18853), (7, 18916), (Start: 9 @19216 has 26 MA's), (11, 19276), (13, 19345), (16, 19375), (18, 19408), (22, 19468), (28, 19621), (31, 19681),

Gene: RunningBrook_47 Start: 20847, Stop: 21458, Start Num: 9

Candidate Starts for RunningBrook_47:

(8, 20637), (Start: 9 @20847 has 26 MA's), (11, 20907), (23, 21111), (31, 21312), (33, 21339),

Gene: Saradis_41 Start: 18808, Stop: 19419, Start Num: 9

Candidate Starts for Saradis_41:

(1, 18142), (2, 18148), (3, 18325), (5, 18436), (6, 18445), (7, 18508), (Start: 9 @18808 has 26 MA's), (11, 18868), (13, 18937), (16, 18967), (18, 19000), (22, 19060), (28, 19213), (31, 19273),

Gene: Shroomer_49 Start: 20387, Stop: 20998, Start Num: 9

Candidate Starts for Shroomer_49:

(8, 20177), (Start: 9 @20387 has 26 MA's), (11, 20447), (23, 20651), (31, 20852), (33, 20879),

Gene: Solimine_41 Start: 19223, Stop: 19834, Start Num: 9

Candidate Starts for Solimine_41:

(1, 18557), (2, 18563), (3, 18740), (5, 18851), (6, 18860), (7, 18923), (Start: 9 @19223 has 26 MA's), (11, 19283), (13, 19352), (16, 19382), (18, 19415), (22, 19475), (26, 19598), (28, 19628), (31, 19688),

Gene: SteakFry_45 Start: 20110, Stop: 20721, Start Num: 9

Candidate Starts for SteakFry_45:

(Start: 9 @20110 has 26 MA's), (11, 20170), (23, 20374), (31, 20575), (33, 20602),

Gene: StevieWelch_46 Start: 20247, Stop: 20858, Start Num: 9

Candidate Starts for StevieWelch_46:

(8, 20037), (Start: 9 @20247 has 26 MA's), (11, 20307), (23, 20511), (31, 20712), (33, 20739),

Gene: Tanis_4 Start: 1145, Stop: 1684, Start Num: 9

Candidate Starts for Tanis_4:

(Start: 9 @1145 has 26 MA's), (21, 1358), (25, 1442),

Gene: Uterion_43 Start: 19318, Stop: 19929, Start Num: 9

Candidate Starts for Uterion_43:

(2, 18658), (3, 18835), (4, 18865), (5, 18946), (6, 18955), (7, 19018), (8, 19108), (Start: 9 @19318 has 26 MA's), (11, 19378), (13, 19447), (16, 19477), (18, 19510), (22, 19570), (28, 19723), (31, 19783),

Gene: Welcome_47 Start: 20264, Stop: 20875, Start Num: 9

Candidate Starts for Welcome_47:

(8, 20054), (Start: 9 @20264 has 26 MA's), (11, 20324), (23, 20528), (31, 20729), (33, 20756),

Gene: Yuma_45 Start: 20175, Stop: 20786, Start Num: 9

Candidate Starts for Yuma_45:

(8, 19965), (Start: 9 @20175 has 26 MA's), (11, 20235), (23, 20439), (31, 20640), (33, 20667),

Gene: Zooman_200 Start: 118042, Stop: 118683, Start Num: 9

Candidate Starts for Zooman_200:

(Start: 9 @118042 has 26 MA's), (10, 118081), (20, 118270), (29, 118507), (39, 118633),