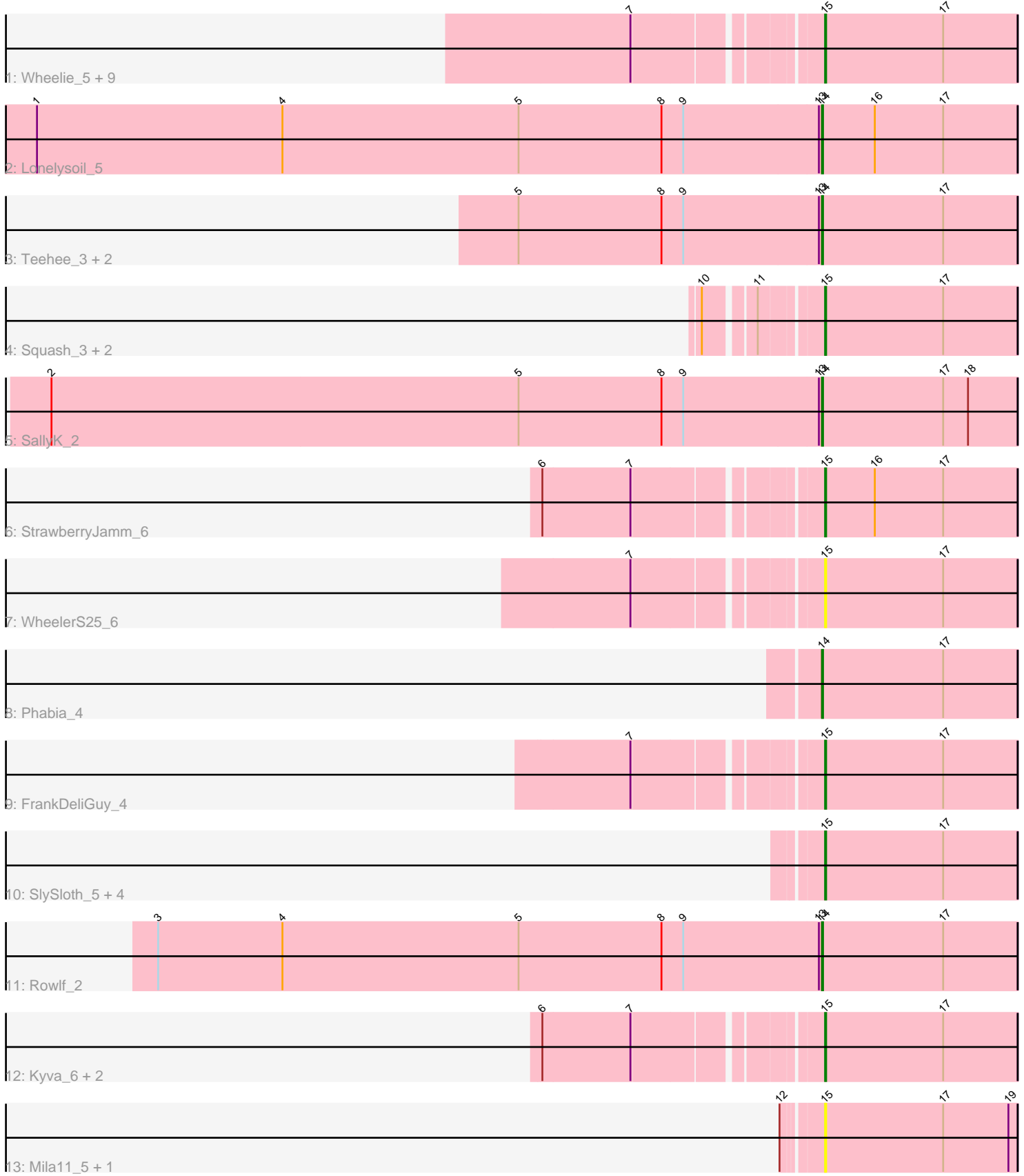


Pham 305189



Note: Tracks are now grouped by subcluster and scaled. Switching in subcluster is indicated by changes in track color. Track scale is now set by default to display the region 30 bp upstream of start 1 to 30 bp downstream of the last possible start. If this default region is judged to be packed too tightly with annotated starts, the track will be further scaled to only show that region of the ORF with annotated starts. This action will be indicated by adding "Zoomed" to the title. For starts, yellow indicates the location of called starts comprised solely of Glimmer/GeneMark auto-annotations, green indicates the location of called starts with at least 1 manual gene annotation.

## Pham 305189 Report

This analysis was run 06/08/26 on database version 649.

Pham number 305189 has 33 members, 4 are drafts.

Phages represented in each track:

- Track 1 : Wheelie\_5, EverythinBagel\_3, Wayne3\_5, Quammi\_4, Viceroy\_5, Rudy\_4, Llemily\_5, Sillytadpoles\_5, Casend\_5, DonaldDuck\_5
- Track 2 : Lonelysoil\_5
- Track 3 : Teehee\_3, Jehoshaphat\_3, Zagie\_3
- Track 4 : Squash\_3, Nike\_4, MorillMayhem\_4
- Track 5 : SallyK\_2
- Track 6 : StrawberryJamm\_6
- Track 7 : WheelerS25\_6
- Track 8 : Phabia\_4
- Track 9 : FrankDeliGuy\_4
- Track 10 : SlySloth\_5, Zhafia\_6, BabyDotz\_4, Judebell\_5, Namago\_3
- Track 11 : Rowlf\_2
- Track 12 : Kyva\_6, Grassboy\_5, Statler\_4
- Track 13 : Mila11\_5, BaconCheese\_4

### ***Summary of Final Annotations (See graph section above for start numbers):***

The start number called the most often in the published annotations is 15, it was called in 22 of the 29 non-draft genes in the pham.

Genes that call this "Most Annotated" start:

- BabyDotz\_4, BaconCheese\_4, Casend\_5, DonaldDuck\_5, EverythinBagel\_3, FrankDeliGuy\_4, Grassboy\_5, Judebell\_5, Kyva\_6, Llemily\_5, Mila11\_5, MorillMayhem\_4, Namago\_3, Nike\_4, Quammi\_4, Rudy\_4, Sillytadpoles\_5, SlySloth\_5, Squash\_3, Statler\_4, StrawberryJamm\_6, Viceroy\_5, Wayne3\_5, WheelerS25\_6, Wheelie\_5, Zhafia\_6,

Genes that have the "Most Annotated" start but do not call it:

- 

Genes that do not have the "Most Annotated" start:

- Jehoshaphat\_3, Lonelysoil\_5, Phabia\_4, Rowlf\_2, SallyK\_2, Teehee\_3, Zagie\_3,

### **Summary by start number:**

Start 14:

- Found in 7 of 33 ( 21.2% ) of genes in pham
- Manual Annotations of this start: 7 of 29
- Called 100.0% of time when present
- Phage (with cluster) where this start called: Jehoshaphat\_3 (EG), Lonelysoil\_5 (EG), Phabia\_4 (EG), Rowlf\_2 (EG), SallyK\_2 (EG), Teehee\_3 (EG), Zagie\_3 (EG),

Start 15:

- Found in 26 of 33 ( 78.8% ) of genes in pham
- Manual Annotations of this start: 22 of 29
- Called 100.0% of time when present
- Phage (with cluster) where this start called: BabyDotz\_4 (EG), BaconCheese\_4 (EG), Casend\_5 (EG), DonaldDuck\_5 (EG), EverythinBagel\_3 (EG), FrankDeliGuy\_4 (EG), Grassboy\_5 (EG), Judebell\_5 (EG), Kyva\_6 (EG), Llemily\_5 (EG), Mila11\_5 (EG), MorillMayhem\_4 (EG), Namago\_3 (EG), Nike\_4 (EG), Quammi\_4 (EG), Rudy\_4 (EG), Sillytadpoles\_5 (EG), SlySloth\_5 (EG), Squash\_3 (EG), Statler\_4 (EG), StrawberryJamm\_6 (EG), Viceroy\_5 (EG), Wayne3\_5 (EG), WheelerS25\_6 (EG), Wheelie\_5 (EG), Zhafia\_6 (EG),

**Summary by clusters:**

There is one cluster represented in this pham: EG

Info for manual annotations of cluster EG:

- Start number 14 was manually annotated 7 times for cluster EG.
- Start number 15 was manually annotated 22 times for cluster EG.

**Gene Information:**

Gene: BabyDotz\_4 Start: 1860, Stop: 1675, Start Num: 15

Candidate Starts for BabyDotz\_4:

(Start: 15 @1860 has 22 MA's), (17, 1746),

Gene: BaconCheese\_4 Start: 1577, Stop: 1392, Start Num: 15

Candidate Starts for BaconCheese\_4:

(12, 1610), (Start: 15 @1577 has 22 MA's), (17, 1463), (19, 1400),

Gene: Casend\_5 Start: 1750, Stop: 1565, Start Num: 15

Candidate Starts for Casend\_5:

(7, 1909), (Start: 15 @1750 has 22 MA's), (17, 1636),

Gene: DonaldDuck\_5 Start: 1505, Stop: 1320, Start Num: 15

Candidate Starts for DonaldDuck\_5:

(7, 1664), (Start: 15 @1505 has 22 MA's), (17, 1391),

Gene: EverythinBagel\_3 Start: 1601, Stop: 1416, Start Num: 15

Candidate Starts for EverythinBagel\_3:

(7, 1760), (Start: 15 @1601 has 22 MA's), (17, 1487),

Gene: FrankDeliGuy\_4 Start: 1641, Stop: 1456, Start Num: 15

Candidate Starts for FrankDeliGuy\_4:  
(7, 1800), (Start: 15 @1641 has 22 MA's), (17, 1527),

Gene: Grassboy\_5 Start: 1745, Stop: 1560, Start Num: 15  
Candidate Starts for Grassboy\_5:  
(6, 1988), (7, 1904), (Start: 15 @1745 has 22 MA's), (17, 1631),

Gene: Jehoshaphat\_3 Start: 1386, Stop: 1198, Start Num: 14  
Candidate Starts for Jehoshaphat\_3:  
(5, 1677), (8, 1539), (9, 1518), (13, 1389), (Start: 14 @1386 has 7 MA's), (17, 1269),

Gene: Judebell\_5 Start: 1845, Stop: 1660, Start Num: 15  
Candidate Starts for Judebell\_5:  
(Start: 15 @1845 has 22 MA's), (17, 1731),

Gene: Kyva\_6 Start: 1780, Stop: 1595, Start Num: 15  
Candidate Starts for Kyva\_6:  
(6, 2023), (7, 1939), (Start: 15 @1780 has 22 MA's), (17, 1666),

Gene: Llemily\_5 Start: 1506, Stop: 1321, Start Num: 15  
Candidate Starts for Llemily\_5:  
(7, 1665), (Start: 15 @1506 has 22 MA's), (17, 1392),

Gene: Lonelysoil\_5 Start: 1622, Stop: 1434, Start Num: 14  
Candidate Starts for Lonelysoil\_5:  
(1, 2378), (4, 2141), (5, 1913), (8, 1775), (9, 1754), (13, 1625), (Start: 14 @1622 has 7 MA's), (16, 1571), (17, 1505),

Gene: Mila11\_5 Start: 1562, Stop: 1377, Start Num: 15  
Candidate Starts for Mila11\_5:  
(12, 1595), (Start: 15 @1562 has 22 MA's), (17, 1448), (19, 1385),

Gene: MorillMayhem\_4 Start: 1579, Stop: 1394, Start Num: 15  
Candidate Starts for MorillMayhem\_4:  
(10, 1675), (11, 1633), (Start: 15 @1579 has 22 MA's), (17, 1465),

Gene: Namago\_3 Start: 1173, Stop: 988, Start Num: 15  
Candidate Starts for Namago\_3:  
(Start: 15 @1173 has 22 MA's), (17, 1059),

Gene: Nike\_4 Start: 1628, Stop: 1443, Start Num: 15  
Candidate Starts for Nike\_4:  
(10, 1724), (11, 1682), (Start: 15 @1628 has 22 MA's), (17, 1514),

Gene: Phabia\_4 Start: 1509, Stop: 1321, Start Num: 14  
Candidate Starts for Phabia\_4:  
(Start: 14 @1509 has 7 MA's), (17, 1392),

Gene: Quammi\_4 Start: 1510, Stop: 1325, Start Num: 15  
Candidate Starts for Quammi\_4:  
(7, 1669), (Start: 15 @1510 has 22 MA's), (17, 1396),

Gene: Rowlf\_2 Start: 1225, Stop: 1037, Start Num: 14

Candidate Starts for Rowlf\_2:

(3, 1864), (4, 1744), (5, 1516), (8, 1378), (9, 1357), (13, 1228), (Start: 14 @1225 has 7 MA's), (17, 1108),

Gene: Rudy\_4 Start: 1510, Stop: 1325, Start Num: 15

Candidate Starts for Rudy\_4:

(7, 1669), (Start: 15 @1510 has 22 MA's), (17, 1396),

Gene: SallyK\_2 Start: 1125, Stop: 937, Start Num: 14

Candidate Starts for SallyK\_2:

(2, 1866), (5, 1416), (8, 1278), (9, 1257), (13, 1128), (Start: 14 @1125 has 7 MA's), (17, 1008), (18, 984),

Gene: Sillytadpoles\_5 Start: 1508, Stop: 1323, Start Num: 15

Candidate Starts for Sillytadpoles\_5:

(7, 1667), (Start: 15 @1508 has 22 MA's), (17, 1394),

Gene: SlySloth\_5 Start: 1863, Stop: 1678, Start Num: 15

Candidate Starts for SlySloth\_5:

(Start: 15 @1863 has 22 MA's), (17, 1749),

Gene: Squash\_3 Start: 1187, Stop: 1002, Start Num: 15

Candidate Starts for Squash\_3:

(10, 1283), (11, 1241), (Start: 15 @1187 has 22 MA's), (17, 1073),

Gene: Statler\_4 Start: 1565, Stop: 1380, Start Num: 15

Candidate Starts for Statler\_4:

(6, 1808), (7, 1724), (Start: 15 @1565 has 22 MA's), (17, 1451),

Gene: StrawberryJamm\_6 Start: 1773, Stop: 1588, Start Num: 15

Candidate Starts for StrawberryJamm\_6:

(6, 2016), (7, 1932), (Start: 15 @1773 has 22 MA's), (16, 1725), (17, 1659),

Gene: Teehee\_3 Start: 1386, Stop: 1198, Start Num: 14

Candidate Starts for Teehee\_3:

(5, 1677), (8, 1539), (9, 1518), (13, 1389), (Start: 14 @1386 has 7 MA's), (17, 1269),

Gene: Viceroy\_5 Start: 1510, Stop: 1325, Start Num: 15

Candidate Starts for Viceroy\_5:

(7, 1669), (Start: 15 @1510 has 22 MA's), (17, 1396),

Gene: Wayne3\_5 Start: 1745, Stop: 1560, Start Num: 15

Candidate Starts for Wayne3\_5:

(7, 1904), (Start: 15 @1745 has 22 MA's), (17, 1631),

Gene: WheelerS25\_6 Start: 2305, Stop: 2120, Start Num: 15

Candidate Starts for WheelerS25\_6:

(7, 2464), (Start: 15 @2305 has 22 MA's), (17, 2191),

Gene: Wheelie\_5 Start: 1505, Stop: 1320, Start Num: 15

Candidate Starts for Wheelie\_5:

(7, 1664), (Start: 15 @1505 has 22 MA's), (17, 1391),

Gene: Zagie\_3 Start: 1181, Stop: 993, Start Num: 14

Candidate Starts for Zagie\_3:

(5, 1472), (8, 1334), (9, 1313), (13, 1184), (Start: 14 @1181 has 7 MA's), (17, 1064),

Gene: Zhafia\_6 Start: 1843, Stop: 1658, Start Num: 15

Candidate Starts for Zhafia\_6:

(Start: 15 @1843 has 22 MA's), (17, 1729),