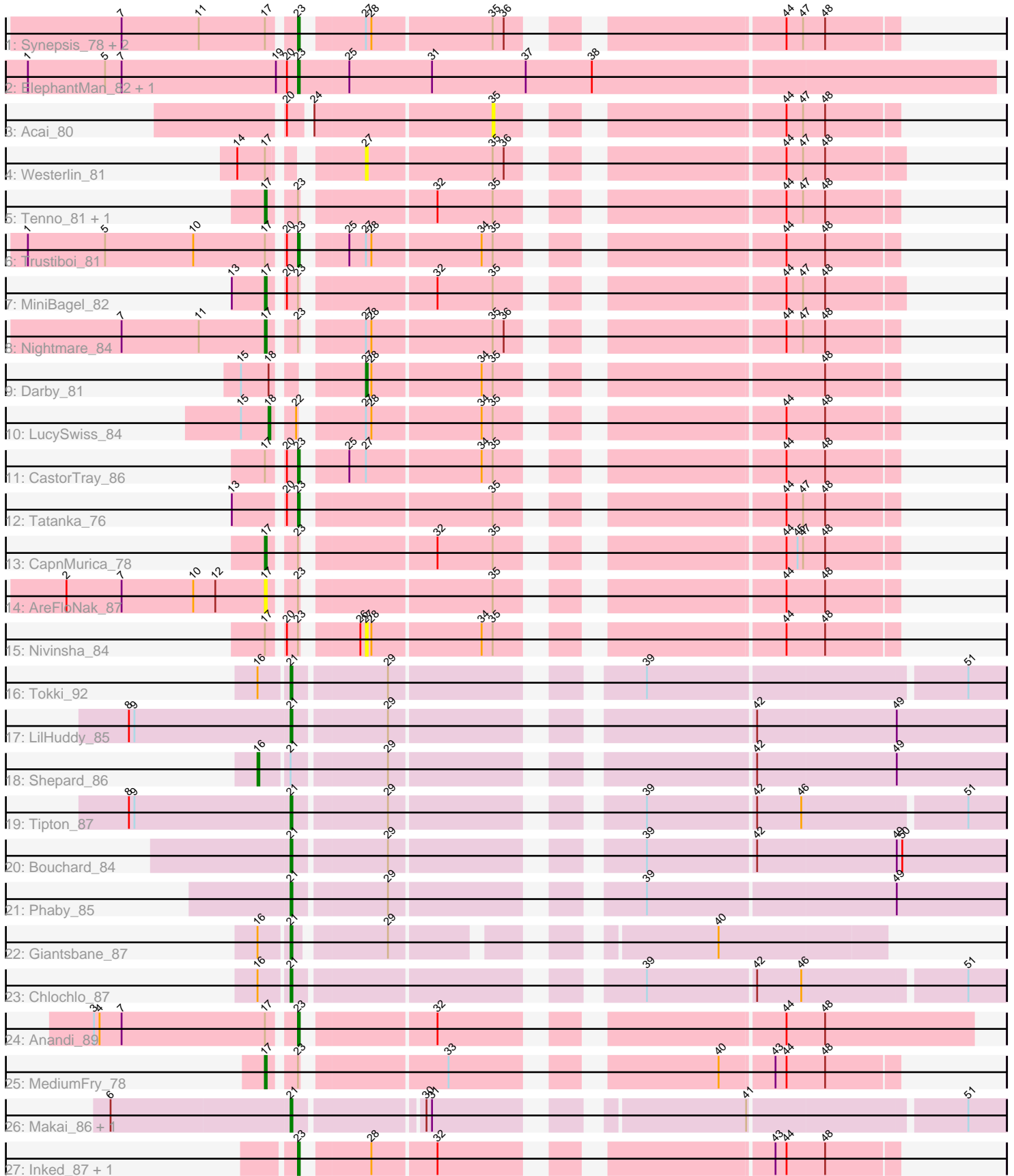


Pham 305190



Note: Tracks are now grouped by subcluster and scaled. Switching in subcluster is indicated by changes in track color. Track scale is now set by default to display the region 30 bp upstream of start 1 to 30 bp downstream of the last possible start. If this default region is judged to be packed too tightly with annotated starts, the track will be further scaled to only show that region of the ORF with annotated starts. This action will be indicated by adding "Zoomed" to the title. For starts, yellow indicates the location of called starts comprised solely of Glimmer/GeneMark auto-annotations, green indicates the location of called starts with at least 1 manual gene annotation.

Pham 305190 Report

This analysis was run 06/08/26 on database version 649.

Pham number 305190 has 33 members, 5 are drafts.

Phages represented in each track:

- Track 1 : Synepsis_78, DevitoJr_82, ScienceWizSam_84
- Track 2 : ElephantMan_82, Niktson_82
- Track 3 : Acai_80
- Track 4 : Westerlin_81
- Track 5 : Tenno_81, Dinallo_76
- Track 6 : Trustiboi_81
- Track 7 : MiniBagel_82
- Track 8 : Nightmare_84
- Track 9 : Darby_81
- Track 10 : LucySwiss_84
- Track 11 : CastorTray_86
- Track 12 : Tatanka_76
- Track 13 : CapnMurica_78
- Track 14 : AreFloNak_87
- Track 15 : Nivinsha_84
- Track 16 : Tokki_92
- Track 17 : LilHuddy_85
- Track 18 : Shepard_86
- Track 19 : Tipton_87
- Track 20 : Bouchard_84
- Track 21 : Phaby_85
- Track 22 : Giantsbane_87
- Track 23 : Chlochlo_87
- Track 24 : Anandi_89
- Track 25 : MediumFry_78
- Track 26 : Makai_86, Truckee_83
- Track 27 : Inked_87, Zippen_88

Summary of Final Annotations (See graph section above for start numbers):

The start number called the most often in the published annotations is 23, it was called in 11 of the 28 non-draft genes in the pham.

Genes that call this "Most Annotated" start:

- Anandi_89, CastorTray_86, DevitoJr_82, ElephantMan_82, Inked_87, Niktson_82, ScienceWizSam_84, Synepsis_78, Tatanka_76, Trustiboi_81, Zippen_88,

Genes that have the "Most Annotated" start but do not call it:

- AreFloNak_87, CapnMurica_78, Dinallo_76, MediumFry_78, MiniBagel_82, Nightmare_84, Nivinsha_84, Tenno_81,

Genes that do not have the "Most Annotated" start:

- Acai_80, Bouchard_84, Chlochlo_87, Darby_81, Giantsbane_87, LilHuddy_85, LucySwiss_84, Makai_86, Phaby_85, Shepard_86, Tipton_87, Tokki_92, Truckee_83, Westerlin_81,

Summary by start number:

Start 16:

- Found in 4 of 33 (12.1%) of genes in pham
- Manual Annotations of this start: 1 of 28
- Called 25.0% of time when present
- Phage (with cluster) where this start called: Shepard_86 (AU2),

Start 17:

- Found in 15 of 33 (45.5%) of genes in pham
- Manual Annotations of this start: 5 of 28
- Called 46.7% of time when present
- Phage (with cluster) where this start called: AreFloNak_87 (AU1), CapnMurica_78 (AU1), Dinallo_76 (AU1), MediumFry_78 (AU4), MiniBagel_82 (AU1), Nightmare_84 (AU1), Tenno_81 (AU1),

Start 18:

- Found in 2 of 33 (6.1%) of genes in pham
- Manual Annotations of this start: 1 of 28
- Called 50.0% of time when present
- Phage (with cluster) where this start called: LucySwiss_84 (AU1),

Start 21:

- Found in 10 of 33 (30.3%) of genes in pham
- Manual Annotations of this start: 9 of 28
- Called 90.0% of time when present
- Phage (with cluster) where this start called: Bouchard_84 (AU2), Chlochlo_87 (AU2), Giantsbane_87 (AU2), LilHuddy_85 (AU2), Makai_86 (AU5), Phaby_85 (AU2), Tipton_87 (AU2), Tokki_92 (AU2), Truckee_83 (AU5),

Start 23:

- Found in 19 of 33 (57.6%) of genes in pham
- Manual Annotations of this start: 11 of 28
- Called 57.9% of time when present
- Phage (with cluster) where this start called: Anandi_89 (AU4), CastorTray_86 (AU1), DevitoJr_82 (AU1), ElephantMan_82 (AU1), Inked_87 (AU7), Niktson_82 (AU1), ScienceWizSam_84 (AU1), Synepsis_78 (AU1), Tatanka_76 (AU1), Trustiboi_81 (AU1), Zippen_88 (AU7),

Start 27:

- Found in 10 of 33 (30.3%) of genes in pham

- Manual Annotations of this start: 1 of 28
- Called 30.0% of time when present
- Phage (with cluster) where this start called: Darby_81 (AU1), Nivinsha_84 (AU1), Westerlin_81 (AU1),

Start 35:

- Found in 17 of 33 (51.5%) of genes in pham
- No Manual Annotations of this start.
- Called 5.9% of time when present
- Phage (with cluster) where this start called: Acai_80 (AU1),

Summary by clusters:

There are 5 clusters represented in this pham: AU1, AU2, AU5, AU4, AU7,

Info for manual annotations of cluster AU1:

- Start number 17 was manually annotated 4 times for cluster AU1.
- Start number 18 was manually annotated 1 time for cluster AU1.
- Start number 23 was manually annotated 8 times for cluster AU1.
- Start number 27 was manually annotated 1 time for cluster AU1.

Info for manual annotations of cluster AU2:

- Start number 16 was manually annotated 1 time for cluster AU2.
- Start number 21 was manually annotated 7 times for cluster AU2.

Info for manual annotations of cluster AU4:

- Start number 17 was manually annotated 1 time for cluster AU4.
- Start number 23 was manually annotated 1 time for cluster AU4.

Info for manual annotations of cluster AU5:

- Start number 21 was manually annotated 2 times for cluster AU5.

Info for manual annotations of cluster AU7:

- Start number 23 was manually annotated 2 times for cluster AU7.

Gene Information:

Gene: Acai_80 Start: 52181, Stop: 52366, Start Num: 35

Candidate Starts for Acai_80:

(20, 52079), (24, 52088), (35, 52181), (44, 52307), (47, 52316), (48, 52328),

Gene: Anandi_89 Start: 52234, Stop: 52554, Start Num: 23

Candidate Starts for Anandi_89:

(3, 52129), (4, 52132), (7, 52144), (Start: 17 @52222 has 5 MA's), (Start: 23 @52234 has 11 MA's), (32, 52297), (44, 52453), (48, 52474),

Gene: AreFloNak_87 Start: 52158, Stop: 52448, Start Num: 17

Candidate Starts for AreFloNak_87:

(2, 52050), (7, 52080), (10, 52119), (12, 52131), (Start: 17 @52158 has 5 MA's), (Start: 23 @52170 has 11 MA's), (35, 52263), (44, 52389), (48, 52410),

Gene: Bouchard_84 Start: 52033, Stop: 52383, Start Num: 21
Candidate Starts for Bouchard_84:
(Start: 21 @52033 has 9 MA's), (29, 52081), (39, 52192), (42, 52249), (49, 52324), (50, 52327),

Gene: CapnMurica_78 Start: 52343, Stop: 52633, Start Num: 17
Candidate Starts for CapnMurica_78:
(Start: 17 @52343 has 5 MA's), (Start: 23 @52355 has 11 MA's), (32, 52418), (35, 52448), (44, 52574),
(45, 52580), (47, 52583), (48, 52595),

Gene: CastorTray_86 Start: 52899, Stop: 53177, Start Num: 23
Candidate Starts for CastorTray_86:
(Start: 17 @52887 has 5 MA's), (20, 52893), (Start: 23 @52899 has 11 MA's), (25, 52917), (Start: 27
@52926 has 1 MA's), (34, 52986), (35, 52992), (44, 53118), (48, 53139),

Gene: Chlochlo_87 Start: 52195, Stop: 52539, Start Num: 21
Candidate Starts for Chlochlo_87:
(Start: 16 @52180 has 1 MA's), (Start: 21 @52195 has 9 MA's), (39, 52354), (42, 52411), (46, 52435),
(51, 52519),

Gene: Darby_81 Start: 52415, Stop: 52666, Start Num: 27
Candidate Starts for Darby_81:
(15, 52364), (Start: 18 @52379 has 1 MA's), (Start: 27 @52415 has 1 MA's), (28, 52418), (34, 52475),
(35, 52481), (48, 52628),

Gene: DevitoJr_82 Start: 52047, Stop: 52325, Start Num: 23
Candidate Starts for DevitoJr_82:
(7, 51957), (11, 51999), (Start: 17 @52035 has 5 MA's), (Start: 23 @52047 has 11 MA's), (Start: 27
@52074 has 1 MA's), (28, 52077), (35, 52140), (36, 52146), (44, 52266), (47, 52275), (48, 52287),

Gene: Dinallo_76 Start: 52586, Stop: 52876, Start Num: 17
Candidate Starts for Dinallo_76:
(Start: 17 @52586 has 5 MA's), (Start: 23 @52598 has 11 MA's), (32, 52661), (35, 52691), (44, 52817),
(47, 52826), (48, 52838),

Gene: ElephantMan_82 Start: 52676, Stop: 53050, Start Num: 23
Candidate Starts for ElephantMan_82:
(1, 52529), (5, 52571), (7, 52580), (19, 52664), (20, 52670), (Start: 23 @52676 has 11 MA's), (25,
52703), (31, 52748), (37, 52799), (38, 52835),

Gene: Giantsbane_87 Start: 51659, Stop: 51931, Start Num: 21
Candidate Starts for Giantsbane_87:
(Start: 16 @51644 has 1 MA's), (Start: 21 @51659 has 9 MA's), (29, 51704), (40, 51842),

Gene: Inked_87 Start: 52710, Stop: 52988, Start Num: 23
Candidate Starts for Inked_87:
(Start: 23 @52710 has 11 MA's), (28, 52740), (32, 52773), (43, 52923), (44, 52929), (48, 52950),

Gene: LilHuddy_85 Start: 52109, Stop: 52459, Start Num: 21
Candidate Starts for LilHuddy_85:
(8, 52022), (9, 52025), (Start: 21 @52109 has 9 MA's), (29, 52157), (42, 52325), (49, 52400),

Gene: LucySwiss_84 Start: 52293, Stop: 52580, Start Num: 18
Candidate Starts for LucySwiss_84:

(15, 52278), (Start: 18 @52293 has 1 MA's), (22, 52302), (Start: 27 @52329 has 1 MA's), (28, 52332), (34, 52389), (35, 52395), (44, 52521), (48, 52542),

Gene: Makai_86 Start: 52779, Stop: 53117, Start Num: 21

Candidate Starts for Makai_86:

(6, 52683), (Start: 21 @52779 has 9 MA's), (30, 52842), (31, 52845), (41, 52986), (51, 53097),

Gene: MediumFry_78 Start: 51487, Stop: 51777, Start Num: 17

Candidate Starts for MediumFry_78:

(Start: 17 @51487 has 5 MA's), (Start: 23 @51499 has 11 MA's), (33, 51568), (40, 51685), (43, 51712), (44, 51718), (48, 51739),

Gene: MiniBagel_82 Start: 52344, Stop: 52637, Start Num: 17

Candidate Starts for MiniBagel_82:

(13, 52326), (Start: 17 @52344 has 5 MA's), (20, 52350), (Start: 23 @52356 has 11 MA's), (32, 52419), (35, 52449), (44, 52575), (47, 52584), (48, 52596),

Gene: Nightmare_84 Start: 52989, Stop: 53279, Start Num: 17

Candidate Starts for Nightmare_84:

(7, 52911), (11, 52953), (Start: 17 @52989 has 5 MA's), (Start: 23 @53001 has 11 MA's), (Start: 27 @53028 has 1 MA's), (28, 53031), (35, 53094), (36, 53100), (44, 53220), (47, 53229), (48, 53241),

Gene: Niktson_82 Start: 52676, Stop: 53050, Start Num: 23

Candidate Starts for Niktson_82:

(1, 52529), (5, 52571), (7, 52580), (19, 52664), (20, 52670), (Start: 23 @52676 has 11 MA's), (25, 52703), (31, 52748), (37, 52799), (38, 52835),

Gene: Nivinsha_84 Start: 52198, Stop: 52449, Start Num: 27

Candidate Starts for Nivinsha_84:

(Start: 17 @52159 has 5 MA's), (20, 52165), (Start: 23 @52171 has 11 MA's), (26, 52195), (Start: 27 @52198 has 1 MA's), (28, 52201), (34, 52258), (35, 52264), (44, 52390), (48, 52411),

Gene: Phaby_85 Start: 52012, Stop: 52362, Start Num: 21

Candidate Starts for Phaby_85:

(Start: 21 @52012 has 9 MA's), (29, 52060), (39, 52171), (49, 52303),

Gene: ScienceWizSam_84 Start: 52220, Stop: 52498, Start Num: 23

Candidate Starts for ScienceWizSam_84:

(7, 52130), (11, 52172), (Start: 17 @52208 has 5 MA's), (Start: 23 @52220 has 11 MA's), (Start: 27 @52247 has 1 MA's), (28, 52250), (35, 52313), (36, 52319), (44, 52439), (47, 52448), (48, 52460),

Gene: Shepard_86 Start: 52221, Stop: 52586, Start Num: 16

Candidate Starts for Shepard_86:

(Start: 16 @52221 has 1 MA's), (Start: 21 @52236 has 9 MA's), (29, 52284), (42, 52452), (49, 52527),

Gene: Synopsis_78 Start: 52058, Stop: 52336, Start Num: 23

Candidate Starts for Synopsis_78:

(7, 51968), (11, 52010), (Start: 17 @52046 has 5 MA's), (Start: 23 @52058 has 11 MA's), (Start: 27 @52085 has 1 MA's), (28, 52088), (35, 52151), (36, 52157), (44, 52277), (47, 52286), (48, 52298),

Gene: Tatanka_76 Start: 51974, Stop: 52252, Start Num: 23

Candidate Starts for Tatanka_76:

(13, 51944), (20, 51968), (Start: 23 @51974 has 11 MA's), (35, 52067), (44, 52193), (47, 52202), (48, 52214),

Gene: Tenno_81 Start: 52377, Stop: 52667, Start Num: 17

Candidate Starts for Tenno_81:

(Start: 17 @52377 has 5 MA's), (Start: 23 @52389 has 11 MA's), (32, 52452), (35, 52482), (44, 52608), (47, 52617), (48, 52629),

Gene: Tipton_87 Start: 52473, Stop: 52817, Start Num: 21

Candidate Starts for Tipton_87:

(8, 52386), (9, 52389), (Start: 21 @52473 has 9 MA's), (29, 52521), (39, 52632), (42, 52689), (46, 52713), (51, 52797),

Gene: Tokki_92 Start: 52593, Stop: 52937, Start Num: 21

Candidate Starts for Tokki_92:

(Start: 16 @52578 has 1 MA's), (Start: 21 @52593 has 9 MA's), (29, 52641), (39, 52752), (51, 52917),

Gene: Truckee_83 Start: 52472, Stop: 52810, Start Num: 21

Candidate Starts for Truckee_83:

(6, 52376), (Start: 21 @52472 has 9 MA's), (30, 52535), (31, 52538), (41, 52679), (51, 52790),

Gene: Trustiboi_81 Start: 52407, Stop: 52685, Start Num: 23

Candidate Starts for Trustiboi_81:

(1, 52266), (5, 52308), (10, 52356), (Start: 17 @52395 has 5 MA's), (20, 52401), (Start: 23 @52407 has 11 MA's), (25, 52425), (Start: 27 @52434 has 1 MA's), (28, 52437), (34, 52494), (35, 52500), (44, 52626), (48, 52647),

Gene: Westerlin_81 Start: 53658, Stop: 53912, Start Num: 27

Candidate Starts for Westerlin_81:

(14, 53607), (Start: 17 @53622 has 5 MA's), (Start: 27 @53658 has 1 MA's), (35, 53724), (36, 53730), (44, 53850), (47, 53859), (48, 53871),

Gene: Zippen_88 Start: 52752, Stop: 53030, Start Num: 23

Candidate Starts for Zippen_88:

(Start: 23 @52752 has 11 MA's), (28, 52782), (32, 52815), (43, 52965), (44, 52971), (48, 52992),