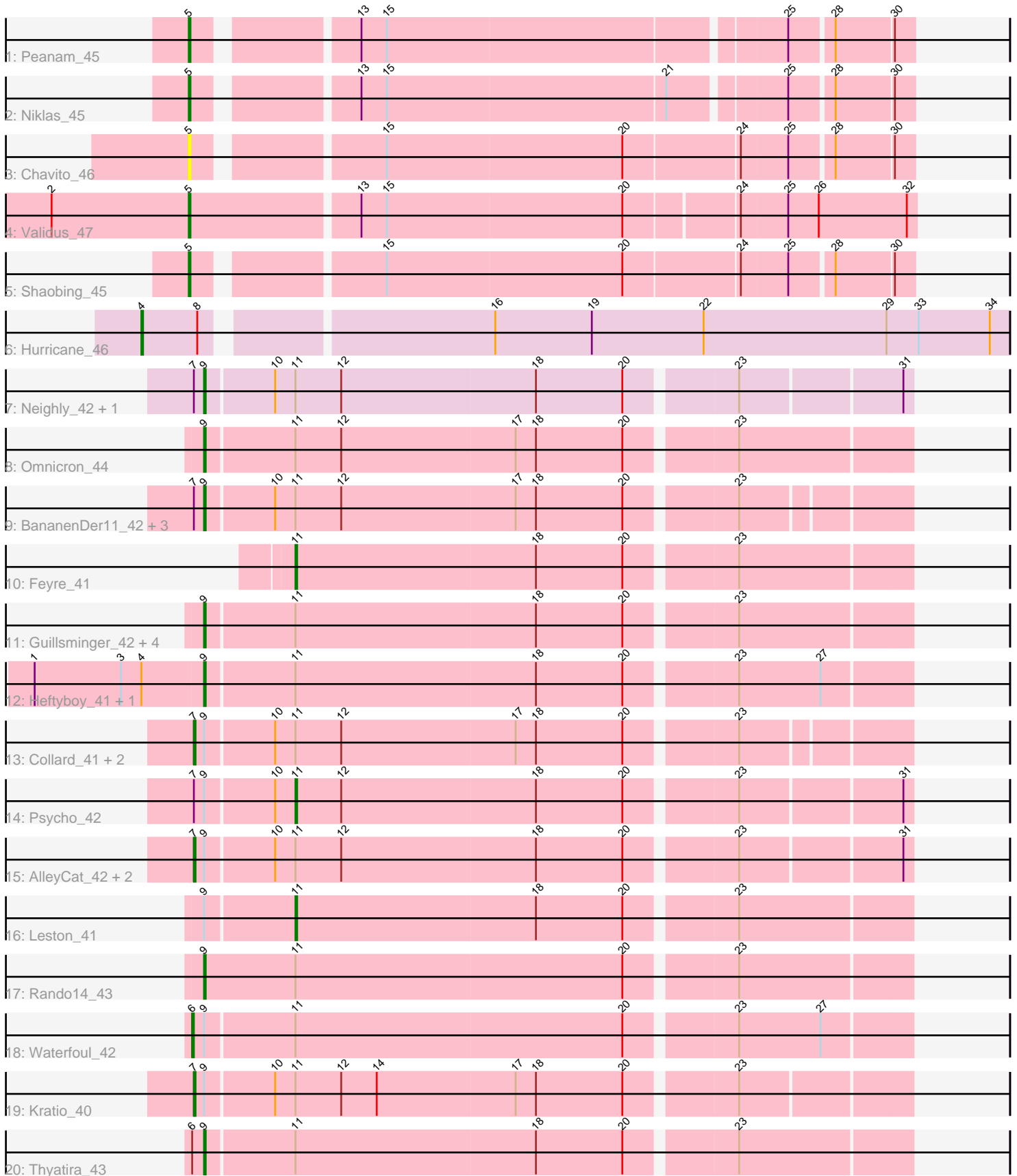


Pham 305193



Note: Tracks are now grouped by subcluster and scaled. Switching in subcluster is indicated by changes in track color. Track scale is now set by default to display the region 30 bp upstream of start 1 to 30 bp downstream of the last possible start. If this default region is judged to be packed too tightly with annotated starts, the track will be further scaled to only show that region of the ORF with annotated starts. This action will be indicated by adding "Zoomed" to the title. For starts, yellow indicates the location of called starts comprised solely of Glimmer/GeneMark auto-annotations, green indicates the location of called starts with at least 1 manual gene annotation.

Pham 305193 Report

This analysis was run 06/08/26 on database version 649.

Pham number 305193 has 33 members, 3 are drafts.

Phages represented in each track:

- Track 1 : Peanam_45
- Track 2 : Niklas_45
- Track 3 : Chavito_46
- Track 4 : Validus_47
- Track 5 : Shaobing_45
- Track 6 : Hurricane_46
- Track 7 : Neighly_42, Edugator_41
- Track 8 : Omnicron_44
- Track 9 : BananenDer11_42, LilDirt_41, ViviJ_41, DoubleChamp_41
- Track 10 : Feyre_41
- Track 11 : Guillsminger_42, Paola_41, Miryou_43, Gengar_41, OkiRoe_41
- Track 12 : Heftyboy_41, SoSeph_41
- Track 13 : Collard_41, InvictusManeo_41, Agent47_42
- Track 14 : Psycho_42
- Track 15 : AlleyCat_42, Larva_42, Dadosky_42
- Track 16 : Leston_41
- Track 17 : Rando14_43
- Track 18 : Waterfoul_42
- Track 19 : Kratio_40
- Track 20 : Thyatira_43

Summary of Final Annotations (See graph section above for start numbers):

The start number called the most often in the published annotations is 9, it was called in 14 of the 30 non-draft genes in the pham.

Genes that call this "Most Annotated" start:

- BananenDer11_42, DoubleChamp_41, Edugator_41, Gengar_41, Guillsminger_42, Heftyboy_41, LilDirt_41, Miryou_43, Neighly_42, OkiRoe_41, Omnicron_44, Paola_41, Rando14_43, SoSeph_41, Thyatira_43, ViviJ_41,

Genes that have the "Most Annotated" start but do not call it:

- Agent47_42, AlleyCat_42, Collard_41, Dadosky_42, InvictusManeo_41, Kratio_40, Larva_42, Leston_41, Psycho_42, Waterfoul_42,

Genes that do not have the "Most Annotated" start:

- Chavito_46, Feyre_41, Hurricane_46, Niklas_45, Peanam_45, Shaobing_45, Validus_47,

Summary by start number:

Start 4:

- Found in 3 of 33 (9.1%) of genes in pham
- Manual Annotations of this start: 1 of 30
- Called 33.3% of time when present
- Phage (with cluster) where this start called: Hurricane_46 (K3),

Start 5:

- Found in 5 of 33 (15.2%) of genes in pham
- Manual Annotations of this start: 4 of 30
- Called 100.0% of time when present
- Phage (with cluster) where this start called: Chavito_46 (K1), Niklas_45 (K1), Peanam_45 (K1), Shaobing_45 (K1), Validus_47 (K1),

Start 6:

- Found in 2 of 33 (6.1%) of genes in pham
- Manual Annotations of this start: 1 of 30
- Called 50.0% of time when present
- Phage (with cluster) where this start called: Waterfoul_42 (K5),

Start 7:

- Found in 14 of 33 (42.4%) of genes in pham
- Manual Annotations of this start: 7 of 30
- Called 50.0% of time when present
- Phage (with cluster) where this start called: Agent47_42 (K5), AlleyCat_42 (K5), Collard_41 (K5), Dadosky_42 (K5), InvictusManeo_41 (K5), Kratio_40 (K5), Larva_42 (K5),

Start 9:

- Found in 26 of 33 (78.8%) of genes in pham
- Manual Annotations of this start: 14 of 30
- Called 61.5% of time when present
- Phage (with cluster) where this start called: BananenDer11_42 (K5), DoubleChamp_41 (K5), Edugator_41 (K5), Gengar_41 (K5), Guillsminger_42 (K5), Heftyboy_41 (K5), LilDirt_41 (K5), Miryou_43 (K5), Neighly_42 (K3), OkiRoe_41 (K5), Omnicron_44 (K5), Paola_41 (K5), Rando14_43 (K5), SoSeph_41 (K5), Thyatira_43 (K5), ViviJ_41 (K5),

Start 11:

- Found in 27 of 33 (81.8%) of genes in pham
- Manual Annotations of this start: 3 of 30
- Called 11.1% of time when present
- Phage (with cluster) where this start called: Feyre_41 (K5), Leston_41 (K5), Psycho_42 (K5),

Summary by clusters:

There are 3 clusters represented in this pham: K3, K1, K5,

Info for manual annotations of cluster K1:

- Start number 5 was manually annotated 4 times for cluster K1.

Info for manual annotations of cluster K3:

- Start number 4 was manually annotated 1 time for cluster K3.

Info for manual annotations of cluster K5:

- Start number 6 was manually annotated 1 time for cluster K5.
- Start number 7 was manually annotated 7 times for cluster K5.
- Start number 9 was manually annotated 14 times for cluster K5.
- Start number 11 was manually annotated 3 times for cluster K5.

Gene Information:

Gene: Agent47_42 Start: 34530, Stop: 34129, Start Num: 7

Candidate Starts for Agent47_42:

(Start: 7 @34530 has 7 MA's), (Start: 9 @34524 has 14 MA's), (10, 34485), (Start: 11 @34473 has 3 MA's), (12, 34446), (17, 34344), (18, 34332), (20, 34281), (23, 34221),

Gene: AlleyCat_42 Start: 34384, Stop: 33980, Start Num: 7

Candidate Starts for AlleyCat_42:

(Start: 7 @34384 has 7 MA's), (Start: 9 @34378 has 14 MA's), (10, 34339), (Start: 11 @34327 has 3 MA's), (12, 34300), (18, 34186), (20, 34135), (23, 34075), (31, 33985),

Gene: BananenDer11_42 Start: 34485, Stop: 34090, Start Num: 9

Candidate Starts for BananenDer11_42:

(Start: 7 @34491 has 7 MA's), (Start: 9 @34485 has 14 MA's), (10, 34446), (Start: 11 @34434 has 3 MA's), (12, 34407), (17, 34305), (18, 34293), (20, 34242), (23, 34182),

Gene: Chavito_46 Start: 36294, Stop: 35896, Start Num: 5

Candidate Starts for Chavito_46:

(Start: 5 @36294 has 4 MA's), (15, 36195), (20, 36057), (24, 35991), (25, 35964), (28, 35940), (30, 35907),

Gene: Collard_41 Start: 34491, Stop: 34090, Start Num: 7

Candidate Starts for Collard_41:

(Start: 7 @34491 has 7 MA's), (Start: 9 @34485 has 14 MA's), (10, 34446), (Start: 11 @34434 has 3 MA's), (12, 34407), (17, 34305), (18, 34293), (20, 34242), (23, 34182),

Gene: Dadosky_42 Start: 34386, Stop: 33982, Start Num: 7

Candidate Starts for Dadosky_42:

(Start: 7 @34386 has 7 MA's), (Start: 9 @34380 has 14 MA's), (10, 34341), (Start: 11 @34329 has 3 MA's), (12, 34302), (18, 34188), (20, 34137), (23, 34077), (31, 33987),

Gene: DoubleChamp_41 Start: 34485, Stop: 34090, Start Num: 9

Candidate Starts for DoubleChamp_41:

(Start: 7 @34491 has 7 MA's), (Start: 9 @34485 has 14 MA's), (10, 34446), (Start: 11 @34434 has 3 MA's), (12, 34407), (17, 34305), (18, 34293), (20, 34242), (23, 34182),

Gene: Edugator_41 Start: 34805, Stop: 34407, Start Num: 9
Candidate Starts for Edugator_41:
(Start: 7 @34811 has 7 MA's), (Start: 9 @34805 has 14 MA's), (10, 34766), (Start: 11 @34754 has 3 MA's), (12, 34727), (18, 34613), (20, 34562), (23, 34502), (31, 34412),

Gene: Feyre_41 Start: 34186, Stop: 33836, Start Num: 11
Candidate Starts for Feyre_41:
(Start: 11 @34186 has 3 MA's), (18, 34045), (20, 33994), (23, 33934),

Gene: Gengar_41 Start: 34347, Stop: 33946, Start Num: 9
Candidate Starts for Gengar_41:
(Start: 9 @34347 has 14 MA's), (Start: 11 @34296 has 3 MA's), (18, 34155), (20, 34104), (23, 34044),

Gene: Guillsminger_42 Start: 34318, Stop: 33917, Start Num: 9
Candidate Starts for Guillsminger_42:
(Start: 9 @34318 has 14 MA's), (Start: 11 @34267 has 3 MA's), (18, 34126), (20, 34075), (23, 34015),

Gene: Heftyboy_41 Start: 34467, Stop: 34066, Start Num: 9
Candidate Starts for Heftyboy_41:
(1, 34566), (3, 34515), (Start: 4 @34503 has 1 MA's), (Start: 9 @34467 has 14 MA's), (Start: 11 @34416 has 3 MA's), (18, 34275), (20, 34224), (23, 34164), (27, 34116),

Gene: Hurricane_46 Start: 35646, Stop: 35155, Start Num: 4
Candidate Starts for Hurricane_46:
(Start: 4 @35646 has 1 MA's), (8, 35613), (16, 35457), (19, 35400), (22, 35334), (29, 35226), (33, 35208), (34, 35166),

Gene: InvictusManeo_41 Start: 34534, Stop: 34133, Start Num: 7
Candidate Starts for InvictusManeo_41:
(Start: 7 @34534 has 7 MA's), (Start: 9 @34528 has 14 MA's), (10, 34489), (Start: 11 @34477 has 3 MA's), (12, 34450), (17, 34348), (18, 34336), (20, 34285), (23, 34225),

Gene: Kratio_40 Start: 34085, Stop: 33681, Start Num: 7
Candidate Starts for Kratio_40:
(Start: 7 @34085 has 7 MA's), (Start: 9 @34079 has 14 MA's), (10, 34040), (Start: 11 @34028 has 3 MA's), (12, 34001), (14, 33980), (17, 33899), (18, 33887), (20, 33836), (23, 33776),

Gene: Larva_42 Start: 34253, Stop: 33849, Start Num: 7
Candidate Starts for Larva_42:
(Start: 7 @34253 has 7 MA's), (Start: 9 @34247 has 14 MA's), (10, 34208), (Start: 11 @34196 has 3 MA's), (12, 34169), (18, 34055), (20, 34004), (23, 33944), (31, 33854),

Gene: Leston_41 Start: 34396, Stop: 34046, Start Num: 11
Candidate Starts for Leston_41:
(Start: 9 @34447 has 14 MA's), (Start: 11 @34396 has 3 MA's), (18, 34255), (20, 34204), (23, 34144),

Gene: LilDirt_41 Start: 34286, Stop: 33891, Start Num: 9
Candidate Starts for LilDirt_41:
(Start: 7 @34292 has 7 MA's), (Start: 9 @34286 has 14 MA's), (10, 34247), (Start: 11 @34235 has 3 MA's), (12, 34208), (17, 34106), (18, 34094), (20, 34043), (23, 33983),

Gene: Miryou_43 Start: 36650, Stop: 36249, Start Num: 9
Candidate Starts for Miryou_43:

(Start: 9 @36650 has 14 MA's), (Start: 11 @36599 has 3 MA's), (18, 36458), (20, 36407), (23, 36347),

Gene: Neighly_42 Start: 34246, Stop: 33848, Start Num: 9

Candidate Starts for Neighly_42:

(Start: 7 @34252 has 7 MA's), (Start: 9 @34246 has 14 MA's), (10, 34207), (Start: 11 @34195 has 3 MA's), (12, 34168), (18, 34054), (20, 34003), (23, 33943), (31, 33853),

Gene: Niklas_45 Start: 35707, Stop: 35315, Start Num: 5

Candidate Starts for Niklas_45:

(Start: 5 @35707 has 4 MA's), (13, 35623), (15, 35608), (21, 35446), (25, 35383), (28, 35359), (30, 35326),

Gene: OkiRoe_41 Start: 34320, Stop: 33919, Start Num: 9

Candidate Starts for OkiRoe_41:

(Start: 9 @34320 has 14 MA's), (Start: 11 @34269 has 3 MA's), (18, 34128), (20, 34077), (23, 34017),

Gene: Omnicron_44 Start: 33930, Stop: 33529, Start Num: 9

Candidate Starts for Omnicron_44:

(Start: 9 @33930 has 14 MA's), (Start: 11 @33879 has 3 MA's), (12, 33852), (17, 33750), (18, 33738), (20, 33687), (23, 33627),

Gene: Paola_41 Start: 34318, Stop: 33917, Start Num: 9

Candidate Starts for Paola_41:

(Start: 9 @34318 has 14 MA's), (Start: 11 @34267 has 3 MA's), (18, 34126), (20, 34075), (23, 34015),

Gene: Peanam_45 Start: 35664, Stop: 35272, Start Num: 5

Candidate Starts for Peanam_45:

(Start: 5 @35664 has 4 MA's), (13, 35580), (15, 35565), (25, 35340), (28, 35316), (30, 35283),

Gene: Psycho_42 Start: 34326, Stop: 33979, Start Num: 11

Candidate Starts for Psycho_42:

(Start: 7 @34383 has 7 MA's), (Start: 9 @34377 has 14 MA's), (10, 34338), (Start: 11 @34326 has 3 MA's), (12, 34299), (18, 34185), (20, 34134), (23, 34074), (31, 33984),

Gene: Rando14_43 Start: 33501, Stop: 33097, Start Num: 9

Candidate Starts for Rando14_43:

(Start: 9 @33501 has 14 MA's), (Start: 11 @33447 has 3 MA's), (20, 33255), (23, 33195),

Gene: Shaobing_45 Start: 35682, Stop: 35284, Start Num: 5

Candidate Starts for Shaobing_45:

(Start: 5 @35682 has 4 MA's), (15, 35583), (20, 35445), (24, 35379), (25, 35352), (28, 35328), (30, 35295),

Gene: SoSeph_41 Start: 34467, Stop: 34066, Start Num: 9

Candidate Starts for SoSeph_41:

(1, 34566), (3, 34515), (Start: 4 @34503 has 1 MA's), (Start: 9 @34467 has 14 MA's), (Start: 11 @34416 has 3 MA's), (18, 34275), (20, 34224), (23, 34164), (27, 34116),

Gene: Thyatira_43 Start: 36667, Stop: 36266, Start Num: 9

Candidate Starts for Thyatira_43:

(Start: 6 @36673 has 1 MA's), (Start: 9 @36667 has 14 MA's), (Start: 11 @36616 has 3 MA's), (18, 36475), (20, 36424), (23, 36364),

Gene: Validus_47 Start: 35733, Stop: 35320, Start Num: 5

Candidate Starts for Validus_47:

(2, 35814), (Start: 5 @35733 has 4 MA's), (13, 35637), (15, 35622), (20, 35484), (24, 35421), (25, 35394), (26, 35376), (32, 35325),

Gene: ViviJ_41 Start: 34285, Stop: 33890, Start Num: 9

Candidate Starts for ViviJ_41:

(Start: 7 @34291 has 7 MA's), (Start: 9 @34285 has 14 MA's), (10, 34246), (Start: 11 @34234 has 3 MA's), (12, 34207), (17, 34105), (18, 34093), (20, 34042), (23, 33982),

Gene: Waterfoul_42 Start: 34567, Stop: 34160, Start Num: 6

Candidate Starts for Waterfoul_42:

(Start: 6 @34567 has 1 MA's), (Start: 9 @34561 has 14 MA's), (Start: 11 @34510 has 3 MA's), (20, 34318), (23, 34258), (27, 34210),