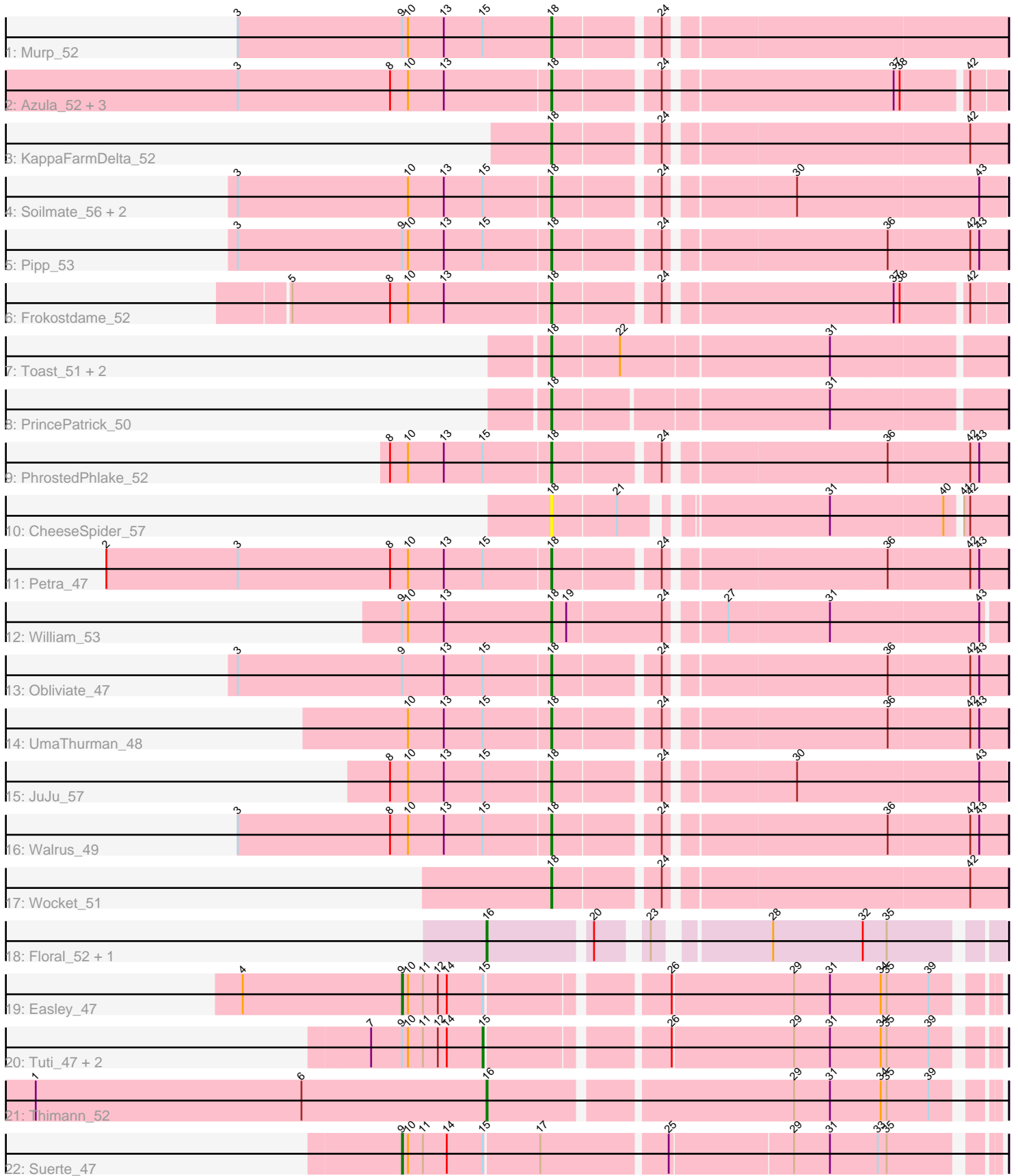


Pham 305199



Note: Tracks are now grouped by subcluster and scaled. Switching in subcluster is indicated by changes in track color. Track scale is now set by default to display the region 30 bp upstream of start 1 to 30 bp downstream of the last possible start. If this default region is judged to be packed too tightly with annotated starts, the track will be further scaled to only show that region of the ORF with annotated starts. This action will be indicated by adding "Zoomed" to the title. For starts, yellow indicates the location of called starts comprised solely of Glimmer/GeneMark auto-annotations, green indicates the location of called starts with at least 1 manual gene annotation.

Pham 305199 Report

This analysis was run 06/08/26 on database version 649.

Pham number 305199 has 32 members, 2 are drafts.

Phages represented in each track:

- Track 1 : Murp_52
- Track 2 : Azula_52, Gambino_54, Blueberry_51, MissRona_52
- Track 3 : KappaFarmDelta_52
- Track 4 : Soilmate_56, Blino_54, CarolAnn_53
- Track 5 : Pipp_53
- Track 6 : Frokostdame_52
- Track 7 : Toast_51, PCoral7_51, Fairfaxidum_52
- Track 8 : PrincePatrick_50
- Track 9 : PhrostedPhlake_52
- Track 10 : CheeseSpider_57
- Track 11 : Petra_47
- Track 12 : William_53
- Track 13 : Obliviate_47
- Track 14 : UmaThurman_48
- Track 15 : JuJu_57
- Track 16 : Walrus_49
- Track 17 : Wocket_51
- Track 18 : Floral_52, Pollux_54
- Track 19 : Easley_47
- Track 20 : Tuti_47, Oregano_52, Annalisa_49
- Track 21 : Thimann_52
- Track 22 : Suerte_47

Summary of Final Annotations (See graph section above for start numbers):

The start number called the most often in the published annotations is 18, it was called in 22 of the 30 non-draft genes in the pham.

Genes that call this "Most Annotated" start:

- Azula_52, Blino_54, Blueberry_51, CarolAnn_53, CheeseSpider_57, Fairfaxidum_52, Frokostdame_52, Gambino_54, JuJu_57, KappaFarmDelta_52, MissRona_52, Murp_52, Obliviate_47, PCoral7_51, Petra_47, PhrostedPhlake_52, Pipp_53, PrincePatrick_50, Soilmate_56, Toast_51, UmaThurman_48, Walrus_49, William_53, Wocket_51,

Genes that have the "Most Annotated" start but do not call it:

-

Genes that do not have the "Most Annotated" start:

- Annalisa_49, Easley_47, Floral_52, Oregano_52, Pollux_54, Suerte_47, Thimann_52, Tuti_47,

Summary by start number:

Start 9:

- Found in 9 of 32 (28.1%) of genes in pham
- Manual Annotations of this start: 2 of 30
- Called 22.2% of time when present
- Phage (with cluster) where this start called: Easley_47 (CZ4), Suerte_47 (CZ4),

Start 15:

- Found in 16 of 32 (50.0%) of genes in pham
- Manual Annotations of this start: 3 of 30
- Called 18.8% of time when present
- Phage (with cluster) where this start called: Annalisa_49 (CZ4), Oregano_52 (CZ4), Tuti_47 (CZ4),

Start 16:

- Found in 3 of 32 (9.4%) of genes in pham
- Manual Annotations of this start: 3 of 30
- Called 100.0% of time when present
- Phage (with cluster) where this start called: Floral_52 (CY1), Pollux_54 (CY1), Thimann_52 (CZ4),

Start 18:

- Found in 24 of 32 (75.0%) of genes in pham
- Manual Annotations of this start: 22 of 30
- Called 100.0% of time when present
- Phage (with cluster) where this start called: Azula_52 (CV), Blino_54 (CV), Blueberry_51 (CV), CarolAnn_53 (CV), CheeseSpider_57 (CV), Fairfaxidum_52 (CV), Frokostdame_52 (CV), Gambino_54 (CV), JuJu_57 (CV), KappaFarmDelta_52 (CV), MissRona_52 (CV), Murp_52 (CV), Obliviate_47 (CV), PCoral7_51 (CV), Petra_47 (CV), PhrostedPhlake_52 (CV), Pipp_53 (CV), PrincePatrick_50 (CV), Soilmate_56 (CV), Toast_51 (CV), UmaThurman_48 (CV), Walrus_49 (CV), William_53 (CV), Wocket_51 (CV),

Summary by clusters:

There are 3 clusters represented in this pham: CY1, CV, CZ4,

Info for manual annotations of cluster CV:

- Start number 18 was manually annotated 22 times for cluster CV.

Info for manual annotations of cluster CY1:

- Start number 16 was manually annotated 2 times for cluster CY1.

Info for manual annotations of cluster CZ4:

- Start number 9 was manually annotated 2 times for cluster CZ4.
- Start number 15 was manually annotated 3 times for cluster CZ4.
- Start number 16 was manually annotated 1 time for cluster CZ4.

Gene Information:

Gene: Annalisa_49 Start: 34855, Stop: 35319, Start Num: 15

Candidate Starts for Annalisa_49:

(7, 34744), (Start: 9 @34774 has 2 MA's), (10, 34780), (11, 34795), (12, 34810), (14, 34819), (Start: 15 @34855 has 3 MA's), (26, 35017), (29, 35134), (31, 35170), (34, 35221), (35, 35227), (39, 35269),

Gene: Azula_52 Start: 37173, Stop: 37583, Start Num: 18

Candidate Starts for Azula_52:

(3, 36861), (8, 37014), (10, 37032), (13, 37068), (Start: 18 @37173 has 22 MA's), (24, 37269), (37, 37485), (38, 37491), (42, 37551),

Gene: Blino_54 Start: 40475, Stop: 40894, Start Num: 18

Candidate Starts for Blino_54:

(3, 40163), (10, 40334), (13, 40370), (Start: 15 @40409 has 3 MA's), (Start: 18 @40475 has 22 MA's), (24, 40571), (30, 40688), (43, 40868),

Gene: Blueberry_51 Start: 37173, Stop: 37583, Start Num: 18

Candidate Starts for Blueberry_51:

(3, 36861), (8, 37014), (10, 37032), (13, 37068), (Start: 18 @37173 has 22 MA's), (24, 37269), (37, 37485), (38, 37491), (42, 37551),

Gene: CarolAnn_53 Start: 40474, Stop: 40893, Start Num: 18

Candidate Starts for CarolAnn_53:

(3, 40162), (10, 40333), (13, 40369), (Start: 15 @40408 has 3 MA's), (Start: 18 @40474 has 22 MA's), (24, 40570), (30, 40687), (43, 40867),

Gene: CheeseSpider_57 Start: 36251, Stop: 36661, Start Num: 18

Candidate Starts for CheeseSpider_57:

(Start: 18 @36251 has 22 MA's), (21, 36314), (31, 36494), (40, 36605), (41, 36617), (42, 36623),

Gene: Easley_47 Start: 34723, Stop: 35268, Start Num: 9

Candidate Starts for Easley_47:

(4, 34564), (Start: 9 @34723 has 2 MA's), (10, 34729), (11, 34744), (12, 34759), (14, 34768), (Start: 15 @34804 has 3 MA's), (26, 34966), (29, 35083), (31, 35119), (34, 35170), (35, 35176), (39, 35218),

Gene: Fairfaxidum_52 Start: 37299, Stop: 37736, Start Num: 18

Candidate Starts for Fairfaxidum_52:

(Start: 18 @37299 has 22 MA's), (22, 37365), (31, 37569),

Gene: Floral_52 Start: 39550, Stop: 39993, Start Num: 16

Candidate Starts for Floral_52:

(Start: 16 @39550 has 3 MA's), (20, 39646), (23, 39685), (28, 39781), (32, 39871), (35, 39895),

Gene: Frokostdame_52 Start: 36843, Stop: 37253, Start Num: 18

Candidate Starts for Frokostdame_52:

(5, 36588), (8, 36684), (10, 36702), (13, 36738), (Start: 18 @36843 has 22 MA's), (24, 36939), (37, 37155), (38, 37161), (42, 37221),

Gene: Gambino_54 Start: 37173, Stop: 37583, Start Num: 18

Candidate Starts for Gambino_54:

(3, 36861), (8, 37014), (10, 37032), (13, 37068), (Start: 18 @37173 has 22 MA's), (24, 37269), (37, 37485), (38, 37491), (42, 37551),

Gene: JuJu_57 Start: 38953, Stop: 39372, Start Num: 18

Candidate Starts for JuJu_57:

(8, 38794), (10, 38812), (13, 38848), (Start: 15 @38887 has 3 MA's), (Start: 18 @38953 has 22 MA's), (24, 39049), (30, 39166), (43, 39346),

Gene: KappaFarmDelta_52 Start: 35159, Stop: 35581, Start Num: 18

Candidate Starts for KappaFarmDelta_52:

(Start: 18 @35159 has 22 MA's), (24, 35255), (42, 35543),

Gene: MissRona_52 Start: 37174, Stop: 37584, Start Num: 18

Candidate Starts for MissRona_52:

(3, 36862), (8, 37015), (10, 37033), (13, 37069), (Start: 18 @37174 has 22 MA's), (24, 37270), (37, 37486), (38, 37492), (42, 37552),

Gene: Murp_52 Start: 38746, Stop: 39168, Start Num: 18

Candidate Starts for Murp_52:

(3, 38431), (Start: 9 @38596 has 2 MA's), (10, 38602), (13, 38638), (Start: 15 @38677 has 3 MA's), (Start: 18 @38746 has 22 MA's), (24, 38842),

Gene: Obliviate_47 Start: 33512, Stop: 33934, Start Num: 18

Candidate Starts for Obliviate_47:

(3, 33200), (Start: 9 @33365 has 2 MA's), (13, 33407), (Start: 15 @33446 has 3 MA's), (Start: 18 @33512 has 22 MA's), (24, 33608), (36, 33815), (42, 33896), (43, 33905),

Gene: Oregano_52 Start: 35488, Stop: 35952, Start Num: 15

Candidate Starts for Oregano_52:

(7, 35377), (Start: 9 @35407 has 2 MA's), (10, 35413), (11, 35428), (12, 35443), (14, 35452), (Start: 15 @35488 has 3 MA's), (26, 35650), (29, 35767), (31, 35803), (34, 35854), (35, 35860), (39, 35902),

Gene: PCoral7_51 Start: 36716, Stop: 37153, Start Num: 18

Candidate Starts for PCoral7_51:

(Start: 18 @36716 has 22 MA's), (22, 36782), (31, 36986),

Gene: Petra_47 Start: 33646, Stop: 34068, Start Num: 18

Candidate Starts for Petra_47:

(2, 33202), (3, 33334), (8, 33487), (10, 33505), (13, 33541), (Start: 15 @33580 has 3 MA's), (Start: 18 @33646 has 22 MA's), (24, 33742), (36, 33949), (42, 34030), (43, 34039),

Gene: PhrostedPhlake_52 Start: 34951, Stop: 35373, Start Num: 18

Candidate Starts for PhrostedPhlake_52:

(8, 34792), (10, 34810), (13, 34846), (Start: 15 @34885 has 3 MA's), (Start: 18 @34951 has 22 MA's), (24, 35047), (36, 35254), (42, 35335), (43, 35344),

Gene: Pipp_53 Start: 36013, Stop: 36435, Start Num: 18

Candidate Starts for Pipp_53:

(3, 35701), (Start: 9 @35866 has 2 MA's), (10, 35872), (13, 35908), (Start: 15 @35947 has 3 MA's), (Start: 18 @36013 has 22 MA's), (24, 36109), (36, 36316), (42, 36397), (43, 36406),

Gene: Pollux_54 Start: 39550, Stop: 39993, Start Num: 16

Candidate Starts for Pollux_54:

(Start: 16 @39550 has 3 MA's), (20, 39646), (23, 39685), (28, 39781), (32, 39871), (35, 39895),

Gene: PrincePatrick_50 Start: 35071, Stop: 35502, Start Num: 18

Candidate Starts for PrincePatrick_50:

(Start: 18 @35071 has 22 MA's), (31, 35335),

Gene: Soilmate_56 Start: 40474, Stop: 40893, Start Num: 18

Candidate Starts for Soilmate_56:

(3, 40162), (10, 40333), (13, 40369), (Start: 15 @40408 has 3 MA's), (Start: 18 @40474 has 22 MA's), (24, 40570), (30, 40687), (43, 40867),

Gene: Suerte_47 Start: 34831, Stop: 35388, Start Num: 9

Candidate Starts for Suerte_47:

(Start: 9 @34831 has 2 MA's), (10, 34837), (11, 34852), (14, 34876), (Start: 15 @34912 has 3 MA's), (17, 34966), (25, 35086), (29, 35203), (31, 35239), (33, 35287), (35, 35296),

Gene: Thimann_52 Start: 36362, Stop: 36832, Start Num: 16

Candidate Starts for Thimann_52:

(1, 35909), (6, 36176), (Start: 16 @36362 has 3 MA's), (29, 36647), (31, 36683), (34, 36734), (35, 36740), (39, 36782),

Gene: Toast_51 Start: 36716, Stop: 37153, Start Num: 18

Candidate Starts for Toast_51:

(Start: 18 @36716 has 22 MA's), (22, 36782), (31, 36986),

Gene: Tuti_47 Start: 36236, Stop: 36700, Start Num: 15

Candidate Starts for Tuti_47:

(7, 36125), (Start: 9 @36155 has 2 MA's), (10, 36161), (11, 36176), (12, 36191), (14, 36200), (Start: 15 @36236 has 3 MA's), (26, 36398), (29, 36515), (31, 36551), (34, 36602), (35, 36608), (39, 36650),

Gene: UmaThurman_48 Start: 35749, Stop: 36171, Start Num: 18

Candidate Starts for UmaThurman_48:

(10, 35608), (13, 35644), (Start: 15 @35683 has 3 MA's), (Start: 18 @35749 has 22 MA's), (24, 35845), (36, 36052), (42, 36133), (43, 36142),

Gene: Walrus_49 Start: 34821, Stop: 35243, Start Num: 18

Candidate Starts for Walrus_49:

(3, 34509), (8, 34662), (10, 34680), (13, 34716), (Start: 15 @34755 has 3 MA's), (Start: 18 @34821 has 22 MA's), (24, 34917), (36, 35124), (42, 35205), (43, 35214),

Gene: William_53 Start: 37408, Stop: 37836, Start Num: 18

Candidate Starts for William_53:

(Start: 9 @37258 has 2 MA's), (10, 37264), (13, 37300), (Start: 18 @37408 has 22 MA's), (19, 37423), (24, 37516), (27, 37567), (31, 37666), (43, 37813),

Gene: Wocket_51 Start: 35326, Stop: 35748, Start Num: 18

Candidate Starts for Wocket_51:

(Start: 18 @35326 has 22 MA's), (24, 35422), (42, 35710),

