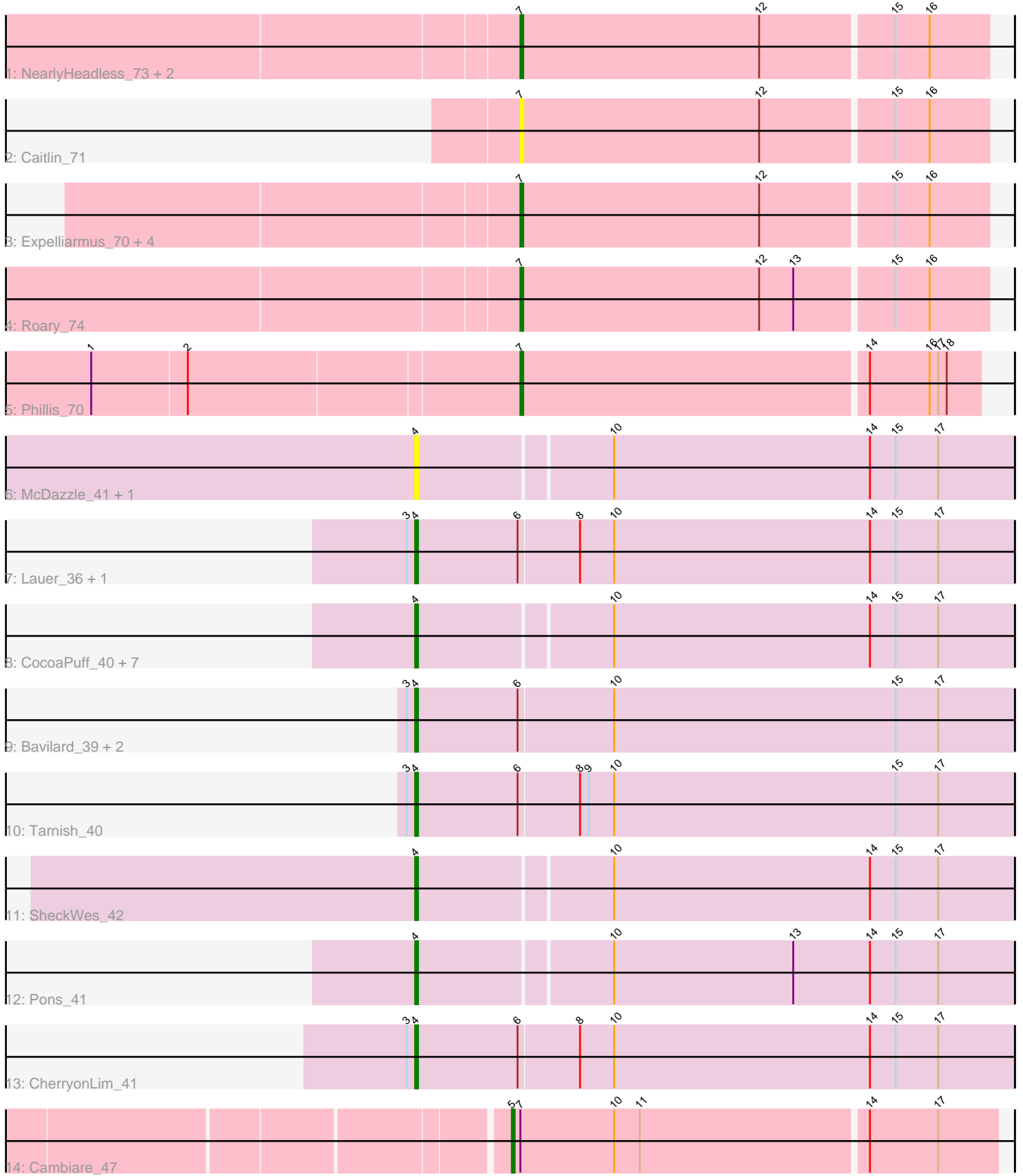


Pham 305205



Note: Tracks are now grouped by subcluster and scaled. Switching in subcluster is indicated by changes in track color. Track scale is now set by default to display the region 30 bp upstream of start 1 to 30 bp downstream of the last possible start. If this default region is judged to be packed too tightly with annotated starts, the track will be further scaled to only show that region of the ORF with annotated starts. This action will be indicated by adding "Zoomed" to the title. For starts, yellow indicates the location of called starts comprised solely of Glimmer/GeneMark auto-annotations, green indicates the location of called starts with at least 1 manual gene annotation.

## Pham 305205 Report

This analysis was run 06/08/26 on database version 649.

Pham number 305205 has 31 members, 6 are drafts.

Phages represented in each track:

- Track 1 : NearlyHeadless\_73, Saintus\_68, Dixon\_72
- Track 2 : Caitlin\_71
- Track 3 : Expelliarmus\_70, Groundhog\_72, Astro\_73, Danforth\_73, Smeadley\_73
- Track 4 : Roary\_74
- Track 5 : Phillis\_70
- Track 6 : McDazzle\_41, ElJefes\_40
- Track 7 : Lauer\_36, Mayweather\_43
- Track 8 : CocoaPuff\_40, Balloona\_38, PotPie\_40, SummitAcademy\_39, BigChungus\_39, Yucky\_42, Vine\_42, Feastonyeet\_39
- Track 9 : Bavidard\_39, Elinal\_43, KayGee\_41
- Track 10 : Tarnish\_40
- Track 11 : SheckWes\_42
- Track 12 : Pons\_41
- Track 13 : CherryonLim\_41
- Track 14 : Cambiare\_47

### ***Summary of Final Annotations (See graph section above for start numbers):***

The start number called the most often in the published annotations is 4, it was called in 14 of the 25 non-draft genes in the pham.

Genes that call this "Most Annotated" start:

- Balloona\_38, Bavidard\_39, BigChungus\_39, CherryonLim\_41, CocoaPuff\_40, ElJefes\_40, Elinal\_43, Feastonyeet\_39, KayGee\_41, Lauer\_36, Mayweather\_43, McDazzle\_41, Pons\_41, PotPie\_40, SheckWes\_42, SummitAcademy\_39, Tarnish\_40, Vine\_42, Yucky\_42,

Genes that have the "Most Annotated" start but do not call it:

- 

Genes that do not have the "Most Annotated" start:

- Astro\_73, Caitlin\_71, Cambiare\_47, Danforth\_73, Dixon\_72, Expelliarmus\_70, Groundhog\_72, NearlyHeadless\_73, Phillis\_70, Roary\_74, Saintus\_68, Smeadley\_73,

## Summary by start number:

### Start 4:

- Found in 19 of 31 ( 61.3% ) of genes in pham
- Manual Annotations of this start: 14 of 25
- Called 100.0% of time when present
- Phage (with cluster) where this start called: Balloona\_38 (CT), Bavidard\_39 (CT), BigChungus\_39 (CT), CherryonLim\_41 (CT), CocoaPuff\_40 (CT), ElJefes\_40 (CT), Elinal\_43 (CT), Feastonyeet\_39 (CT), KayGee\_41 (CT), Lauer\_36 (CT), Mayweather\_43 (CT), McDazzle\_41 (CT), Pons\_41 (CT), PotPie\_40 (CT), SheckWes\_42 (CT), SummitAcademy\_39 (CT), Tarnish\_40 (CT), Vine\_42 (CT), Yucky\_42 (CT),

### Start 5:

- Found in 1 of 31 ( 3.2% ) of genes in pham
- Manual Annotations of this start: 1 of 25
- Called 100.0% of time when present
- Phage (with cluster) where this start called: Cambiare\_47 (G2),

### Start 7:

- Found in 12 of 31 ( 38.7% ) of genes in pham
- Manual Annotations of this start: 10 of 25
- Called 91.7% of time when present
- Phage (with cluster) where this start called: Astro\_73 (A8), Caitlin\_71 (A8), Danforth\_73 (A8), Dixon\_72 (A8), Expelliarmus\_70 (A8), Groundhog\_72 (A8), NearlyHeadless\_73 (A8), Phillis\_70 (A8), Roary\_74 (A8), Saintus\_68 (A8), Smeadley\_73 (A8),

## Summary by clusters:

There are 3 clusters represented in this pham: A8, G2, CT,

Info for manual annotations of cluster A8:

- Start number 7 was manually annotated 10 times for cluster A8.

Info for manual annotations of cluster CT:

- Start number 4 was manually annotated 14 times for cluster CT.

Info for manual annotations of cluster G2:

- Start number 5 was manually annotated 1 time for cluster G2.

## Gene Information:

Gene: Astro\_73 Start: 40939, Stop: 40778, Start Num: 7

Candidate Starts for Astro\_73:

(Start: 7 @40939 has 10 MA's), (12, 40855), (15, 40810), (16, 40798),

Gene: Balloona\_38 Start: 28381, Stop: 28175, Start Num: 4

Candidate Starts for Balloona\_38:

(Start: 4 @28381 has 14 MA's), (10, 28315), (14, 28225), (15, 28216), (17, 28201),

Gene: Bavilard\_39 Start: 28599, Stop: 28390, Start Num: 4

Candidate Starts for Bavilard\_39:

(3, 28602), (Start: 4 @28599 has 14 MA's), (6, 28563), (10, 28530), (15, 28431), (17, 28416),

Gene: BigChungus\_39 Start: 28782, Stop: 28576, Start Num: 4

Candidate Starts for BigChungus\_39:

(Start: 4 @28782 has 14 MA's), (10, 28716), (14, 28626), (15, 28617), (17, 28602),

Gene: Caitlin\_71 Start: 40640, Stop: 40479, Start Num: 7

Candidate Starts for Caitlin\_71:

(Start: 7 @40640 has 10 MA's), (12, 40556), (15, 40511), (16, 40499),

Gene: Cambiare\_47 Start: 37281, Stop: 37448, Start Num: 5

Candidate Starts for Cambiare\_47:

(Start: 5 @37281 has 1 MA's), (Start: 7 @37284 has 10 MA's), (10, 37317), (11, 37326), (14, 37404), (17, 37428),

Gene: CherryonLim\_41 Start: 29932, Stop: 29723, Start Num: 4

Candidate Starts for CherryonLim\_41:

(3, 29935), (Start: 4 @29932 has 14 MA's), (6, 29896), (8, 29875), (10, 29863), (14, 29773), (15, 29764), (17, 29749),

Gene: CocoaPuff\_40 Start: 28796, Stop: 28590, Start Num: 4

Candidate Starts for CocoaPuff\_40:

(Start: 4 @28796 has 14 MA's), (10, 28730), (14, 28640), (15, 28631), (17, 28616),

Gene: Danforth\_73 Start: 40987, Stop: 40826, Start Num: 7

Candidate Starts for Danforth\_73:

(Start: 7 @40987 has 10 MA's), (12, 40903), (15, 40858), (16, 40846),

Gene: Dixon\_72 Start: 40507, Stop: 40346, Start Num: 7

Candidate Starts for Dixon\_72:

(Start: 7 @40507 has 10 MA's), (12, 40423), (15, 40378), (16, 40366),

Gene: ElJefes\_40 Start: 29121, Stop: 28915, Start Num: 4

Candidate Starts for ElJefes\_40:

(Start: 4 @29121 has 14 MA's), (10, 29055), (14, 28965), (15, 28956), (17, 28941),

Gene: Elinal\_43 Start: 29167, Stop: 28958, Start Num: 4

Candidate Starts for Elinal\_43:

(3, 29170), (Start: 4 @29167 has 14 MA's), (6, 29131), (10, 29098), (15, 28999), (17, 28984),

Gene: Expelliarmus\_70 Start: 40711, Stop: 40550, Start Num: 7

Candidate Starts for Expelliarmus\_70:

(Start: 7 @40711 has 10 MA's), (12, 40627), (15, 40582), (16, 40570),

Gene: Feastonyeet\_39 Start: 28782, Stop: 28576, Start Num: 4

Candidate Starts for Feastonyeet\_39:

(Start: 4 @28782 has 14 MA's), (10, 28716), (14, 28626), (15, 28617), (17, 28602),

Gene: Groundhog\_72 Start: 40917, Stop: 40756, Start Num: 7

Candidate Starts for Groundhog\_72:

(Start: 7 @40917 has 10 MA's), (12, 40833), (15, 40788), (16, 40776),

Gene: KayGee\_41 Start: 29167, Stop: 28958, Start Num: 4

Candidate Starts for KayGee\_41:

(3, 29170), (Start: 4 @29167 has 14 MA's), (6, 29131), (10, 29098), (15, 28999), (17, 28984),

Gene: Lauer\_36 Start: 29997, Stop: 29788, Start Num: 4

Candidate Starts for Lauer\_36:

(3, 30000), (Start: 4 @29997 has 14 MA's), (6, 29961), (8, 29940), (10, 29928), (14, 29838), (15, 29829), (17, 29814),

Gene: Mayweather\_43 Start: 29791, Stop: 29582, Start Num: 4

Candidate Starts for Mayweather\_43:

(3, 29794), (Start: 4 @29791 has 14 MA's), (6, 29755), (8, 29734), (10, 29722), (14, 29632), (15, 29623), (17, 29608),

Gene: McDazzle\_41 Start: 29115, Stop: 28909, Start Num: 4

Candidate Starts for McDazzle\_41:

(Start: 4 @29115 has 14 MA's), (10, 29049), (14, 28959), (15, 28950), (17, 28935),

Gene: NearlyHeadless\_73 Start: 40753, Stop: 40592, Start Num: 7

Candidate Starts for NearlyHeadless\_73:

(Start: 7 @40753 has 10 MA's), (12, 40669), (15, 40624), (16, 40612),

Gene: Phillis\_70 Start: 40207, Stop: 40049, Start Num: 7

Candidate Starts for Phillis\_70:

(1, 40354), (2, 40321), (Start: 7 @40207 has 10 MA's), (14, 40087), (16, 40066), (17, 40063), (18, 40060),

Gene: Pons\_41 Start: 29139, Stop: 28933, Start Num: 4

Candidate Starts for Pons\_41:

(Start: 4 @29139 has 14 MA's), (10, 29073), (13, 29010), (14, 28983), (15, 28974), (17, 28959),

Gene: PotPie\_40 Start: 30073, Stop: 29867, Start Num: 4

Candidate Starts for PotPie\_40:

(Start: 4 @30073 has 14 MA's), (10, 30007), (14, 29917), (15, 29908), (17, 29893),

Gene: Roary\_74 Start: 40972, Stop: 40811, Start Num: 7

Candidate Starts for Roary\_74:

(Start: 7 @40972 has 10 MA's), (12, 40888), (13, 40876), (15, 40843), (16, 40831),

Gene: Saintus\_68 Start: 37637, Stop: 37476, Start Num: 7

Candidate Starts for Saintus\_68:

(Start: 7 @37637 has 10 MA's), (12, 37553), (15, 37508), (16, 37496),

Gene: SheckWes\_42 Start: 28660, Stop: 28454, Start Num: 4

Candidate Starts for SheckWes\_42:

(Start: 4 @28660 has 14 MA's), (10, 28594), (14, 28504), (15, 28495), (17, 28480),

Gene: Smeadley\_73 Start: 40833, Stop: 40672, Start Num: 7

Candidate Starts for Smeadley\_73:

(Start: 7 @40833 has 10 MA's), (12, 40749), (15, 40704), (16, 40692),

Gene: SummitAcademy\_39 Start: 28702, Stop: 28496, Start Num: 4

Candidate Starts for SummitAcademy\_39:

(Start: 4 @28702 has 14 MA's), (10, 28636), (14, 28546), (15, 28537), (17, 28522),

Gene: Tarnish\_40 Start: 29209, Stop: 29000, Start Num: 4

Candidate Starts for Tarnish\_40:

(3, 29212), (Start: 4 @29209 has 14 MA's), (6, 29173), (8, 29152), (9, 29149), (10, 29140), (15, 29041),  
(17, 29026),

Gene: Vine\_42 Start: 29438, Stop: 29232, Start Num: 4

Candidate Starts for Vine\_42:

(Start: 4 @29438 has 14 MA's), (10, 29372), (14, 29282), (15, 29273), (17, 29258),

Gene: Yucky\_42 Start: 29378, Stop: 29172, Start Num: 4

Candidate Starts for Yucky\_42:

(Start: 4 @29378 has 14 MA's), (10, 29312), (14, 29222), (15, 29213), (17, 29198),