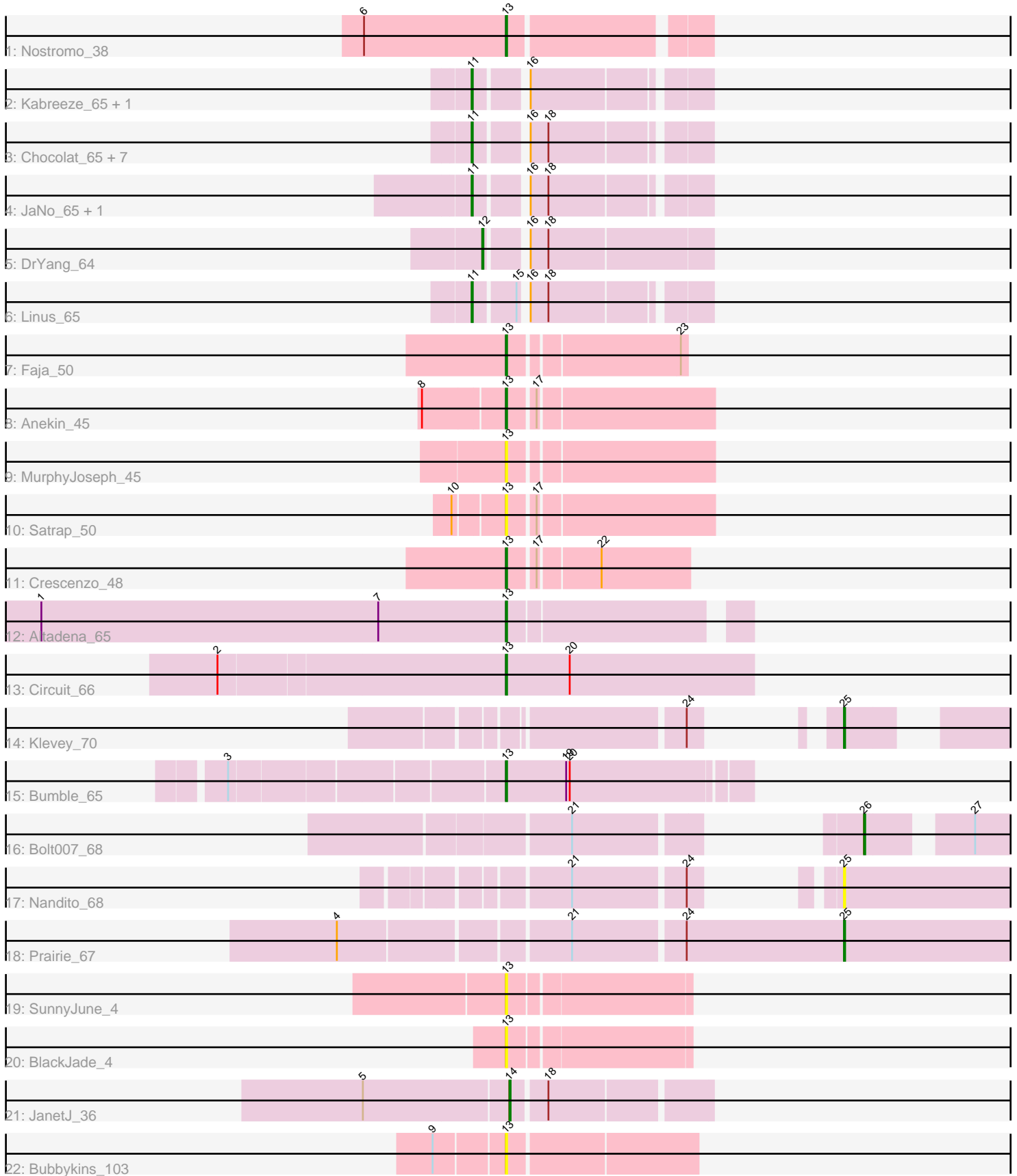


Pham 305206



Note: Tracks are now grouped by subcluster and scaled. Switching in subcluster is indicated by changes in track color. Track scale is now set by default to display the region 30 bp upstream of start 1 to 30 bp downstream of the last possible start. If this default region is judged to be packed too tightly with annotated starts, the track will be further scaled to only show that region of the ORF with annotated starts. This action will be indicated by adding "Zoomed" to the title. For starts, yellow indicates the location of called starts comprised solely of Glimmer/GeneMark auto-annotations, green indicates the location of called starts with at least 1 manual gene annotation.

Pham 305206 Report

This analysis was run 06/08/26 on database version 649.

Pham number 305206 has 31 members, 7 are drafts.

Phages represented in each track:

- Track 1 : Nostromo_38
- Track 2 : Kabreeze_65, HumptyDumpty_65
- Track 3 : Chocolat_65, Conboy_64, EdgarPoe_64, Tophat_65, Chubster_66, Chipper1996_650, MoyaNatalis_65, PrincessTrina_65
- Track 4 : JaNo_65, Mordred_65
- Track 5 : DrYang_64
- Track 6 : Linus_65
- Track 7 : Faja_50
- Track 8 : Anekin_45
- Track 9 : MurphyJoseph_45
- Track 10 : Satrap_50
- Track 11 : Crescenzo_48
- Track 12 : Altadena_65
- Track 13 : Circuit_66
- Track 14 : Klevey_70
- Track 15 : Bumble_65
- Track 16 : Bolt007_68
- Track 17 : Nandito_68
- Track 18 : Prairie_67
- Track 19 : SunnyJune_4
- Track 20 : BlackJade_4
- Track 21 : JanetJ_36
- Track 22 : Bubbykins_103

Summary of Final Annotations (See graph section above for start numbers):

The start number called the most often in the published annotations is 11, it was called in 12 of the 24 non-draft genes in the pham.

Genes that call this "Most Annotated" start:

- Chipper1996_650, Chocolat_65, Chubster_66, Conboy_64, EdgarPoe_64, HumptyDumpty_65, JaNo_65, Kabreeze_65, Linus_65, Mordred_65, MoyaNatalis_65, PrincessTrina_65, Tophat_65,

Genes that have the "Most Annotated" start but do not call it:

-

Genes that do not have the "Most Annotated" start:

- Altadena_65, Anekin_45, BlackJade_4, Bolt007_68, Bubbykins_103, Bumble_65, Circuit_66, Crescenzo_48, DrYang_64, Faja_50, JanetJ_36, Klevey_70, MurphyJoseph_45, Nandito_68, Nostromo_38, Prairie_67, Satrap_50, SunnyJune_4,

Summary by start number:

Start 11:

- Found in 13 of 31 (41.9%) of genes in pham
- Manual Annotations of this start: 12 of 24
- Called 100.0% of time when present
- Phage (with cluster) where this start called: Chipper1996_650 (AR), Chocolat_65 (AR), Chubster_66 (AR), Conboy_64 (AR), EdgarPoe_64 (AR), HumptyDumpty_65 (AR), JaNo_65 (AR), Kabreeze_65 (AR), Linus_65 (AR), Mordred_65 (AR), MoyaNatalis_65 (AR), PrincessTrina_65 (AR), Tophat_65 (AR),

Start 12:

- Found in 1 of 31 (3.2%) of genes in pham
- Manual Annotations of this start: 1 of 24
- Called 100.0% of time when present
- Phage (with cluster) where this start called: DrYang_64 (AR),

Start 13:

- Found in 12 of 31 (38.7%) of genes in pham
- Manual Annotations of this start: 7 of 24
- Called 100.0% of time when present
- Phage (with cluster) where this start called: Altadena_65 (FH), Anekin_45 (AY), BlackJade_4 (FL), Bubbykins_103 (UNK), Bumble_65 (FH), Circuit_66 (FH), Crescenzo_48 (AY), Faja_50 (AY), MurphyJoseph_45 (AY), Nostromo_38 (AO3), Satrap_50 (AY), SunnyJune_4 (FL),

Start 14:

- Found in 1 of 31 (3.2%) of genes in pham
- Manual Annotations of this start: 1 of 24
- Called 100.0% of time when present
- Phage (with cluster) where this start called: JanetJ_36 (FO),

Start 25:

- Found in 3 of 31 (9.7%) of genes in pham
- Manual Annotations of this start: 2 of 24
- Called 100.0% of time when present
- Phage (with cluster) where this start called: Klevey_70 (FH), Nandito_68 (FH), Prairie_67 (FH),

Start 26:

- Found in 1 of 31 (3.2%) of genes in pham
- Manual Annotations of this start: 1 of 24
- Called 100.0% of time when present
- Phage (with cluster) where this start called: Bolt007_68 (FH),

Summary by clusters:

There are 7 clusters represented in this pham: AY, AR, AO3, FH, UNK, FL, FO,

Info for manual annotations of cluster AO3:

- Start number 13 was manually annotated 1 time for cluster AO3.

Info for manual annotations of cluster AR:

- Start number 11 was manually annotated 12 times for cluster AR.
- Start number 12 was manually annotated 1 time for cluster AR.

Info for manual annotations of cluster AY:

- Start number 13 was manually annotated 3 times for cluster AY.

Info for manual annotations of cluster FH:

- Start number 13 was manually annotated 3 times for cluster FH.
- Start number 25 was manually annotated 2 times for cluster FH.
- Start number 26 was manually annotated 1 time for cluster FH.

Info for manual annotations of cluster FO:

- Start number 14 was manually annotated 1 time for cluster FO.

Gene Information:

Gene: Altadena_65 Start: 42328, Stop: 42143, Start Num: 13

Candidate Starts for Altadena_65:

(1, 42721), (7, 42436), (Start: 13 @42328 has 7 MA's),

Gene: Anekin_45 Start: 30188, Stop: 30352, Start Num: 13

Candidate Starts for Anekin_45:

(8, 30122), (Start: 13 @30188 has 7 MA's), (17, 30209),

Gene: BlackJade_4 Start: 3263, Stop: 3409, Start Num: 13

Candidate Starts for BlackJade_4:

(Start: 13 @3263 has 7 MA's),

Gene: Bolt007_68 Start: 44487, Stop: 44305, Start Num: 26

Candidate Starts for Bolt007_68:

(21, 44622), (Start: 26 @44487 has 1 MA's), (27, 44415),

Gene: Bubbykins_103 Start: 61713, Stop: 61865, Start Num: 13

Candidate Starts for Bubbykins_103:

(9, 61659), (Start: 13 @61713 has 7 MA's),

Gene: Bumble_65 Start: 43235, Stop: 43035, Start Num: 13

Candidate Starts for Bumble_65:

(3, 43451), (Start: 13 @43235 has 7 MA's), (19, 43184), (20, 43181),

Gene: Chipper1996_650 Start: 45331, Stop: 45504, Start Num: 11

Candidate Starts for Chipper1996_650:
(Start: 11 @45331 has 12 MA's), (16, 45367), (18, 45382),

Gene: Chocolat_65 Start: 45356, Stop: 45529, Start Num: 11
Candidate Starts for Chocolat_65:
(Start: 11 @45356 has 12 MA's), (16, 45392), (18, 45407),

Gene: Chubster_66 Start: 45508, Stop: 45681, Start Num: 11
Candidate Starts for Chubster_66:
(Start: 11 @45508 has 12 MA's), (16, 45544), (18, 45559),

Gene: Circuit_66 Start: 43968, Stop: 43759, Start Num: 13
Candidate Starts for Circuit_66:
(2, 44205), (Start: 13 @43968 has 7 MA's), (20, 43914),

Gene: Conboy_64 Start: 45195, Stop: 45368, Start Num: 11
Candidate Starts for Conboy_64:
(Start: 11 @45195 has 12 MA's), (16, 45231), (18, 45246),

Gene: Crescenzo_48 Start: 31111, Stop: 31254, Start Num: 13
Candidate Starts for Crescenzo_48:
(Start: 13 @31111 has 7 MA's), (17, 31132), (22, 31180),

Gene: DrYang_64 Start: 46974, Stop: 47150, Start Num: 12
Candidate Starts for DrYang_64:
(Start: 12 @46974 has 1 MA's), (16, 47001), (18, 47016),

Gene: EdgarPoe_64 Start: 45195, Stop: 45368, Start Num: 11
Candidate Starts for EdgarPoe_64:
(Start: 11 @45195 has 12 MA's), (16, 45231), (18, 45246),

Gene: Faja_50 Start: 32068, Stop: 32208, Start Num: 13
Candidate Starts for Faja_50:
(Start: 13 @32068 has 7 MA's), (23, 32203),

Gene: HumptyDumpty_65 Start: 45295, Stop: 45468, Start Num: 11
Candidate Starts for HumptyDumpty_65:
(Start: 11 @45295 has 12 MA's), (16, 45331),

Gene: JaNo_65 Start: 45418, Stop: 45591, Start Num: 11
Candidate Starts for JaNo_65:
(Start: 11 @45418 has 12 MA's), (16, 45454), (18, 45469),

Gene: JanetJ_36 Start: 30129, Stop: 30284, Start Num: 14
Candidate Starts for JanetJ_36:
(5, 30009), (Start: 14 @30129 has 1 MA's), (18, 30156),

Gene: Kabreeze_65 Start: 45374, Stop: 45547, Start Num: 11
Candidate Starts for Kabreeze_65:
(Start: 11 @45374 has 12 MA's), (16, 45410),

Gene: Klevey_70 Start: 44391, Stop: 44209, Start Num: 25
Candidate Starts for Klevey_70:

(24, 44424), (Start: 25 @44391 has 2 MA's),

Gene: Linus_65 Start: 45497, Stop: 45670, Start Num: 11

Candidate Starts for Linus_65:

(Start: 11 @45497 has 12 MA's), (15, 45530), (16, 45533), (18, 45548),

Gene: Mordred_65 Start: 45412, Stop: 45585, Start Num: 11

Candidate Starts for Mordred_65:

(Start: 11 @45412 has 12 MA's), (16, 45448), (18, 45463),

Gene: MoyaNatalis_65 Start: 45343, Stop: 45516, Start Num: 11

Candidate Starts for MoyaNatalis_65:

(Start: 11 @45343 has 12 MA's), (16, 45379), (18, 45394),

Gene: MurphyJoseph_45 Start: 29289, Stop: 29453, Start Num: 13

Candidate Starts for MurphyJoseph_45:

(Start: 13 @29289 has 7 MA's),

Gene: Nandito_68 Start: 44504, Stop: 44283, Start Num: 25

Candidate Starts for Nandito_68:

(21, 44633), (24, 44543), (Start: 25 @44504 has 2 MA's),

Gene: Nostromo_38 Start: 31200, Stop: 31355, Start Num: 13

Candidate Starts for Nostromo_38:

(6, 31080), (Start: 13 @31200 has 7 MA's),

Gene: Prairie_67 Start: 43945, Stop: 43724, Start Num: 25

Candidate Starts for Prairie_67:

(4, 44347), (21, 44167), (24, 44077), (Start: 25 @43945 has 2 MA's),

Gene: PrincessTrina_65 Start: 45399, Stop: 45572, Start Num: 11

Candidate Starts for PrincessTrina_65:

(Start: 11 @45399 has 12 MA's), (16, 45435), (18, 45450),

Gene: Satrap_50 Start: 30878, Stop: 31042, Start Num: 13

Candidate Starts for Satrap_50:

(10, 30839), (Start: 13 @30878 has 7 MA's), (17, 30899),

Gene: SunnyJune_4 Start: 3451, Stop: 3597, Start Num: 13

Candidate Starts for SunnyJune_4:

(Start: 13 @3451 has 7 MA's),

Gene: Tophat_65 Start: 45332, Stop: 45505, Start Num: 11

Candidate Starts for Tophat_65:

(Start: 11 @45332 has 12 MA's), (16, 45368), (18, 45383),