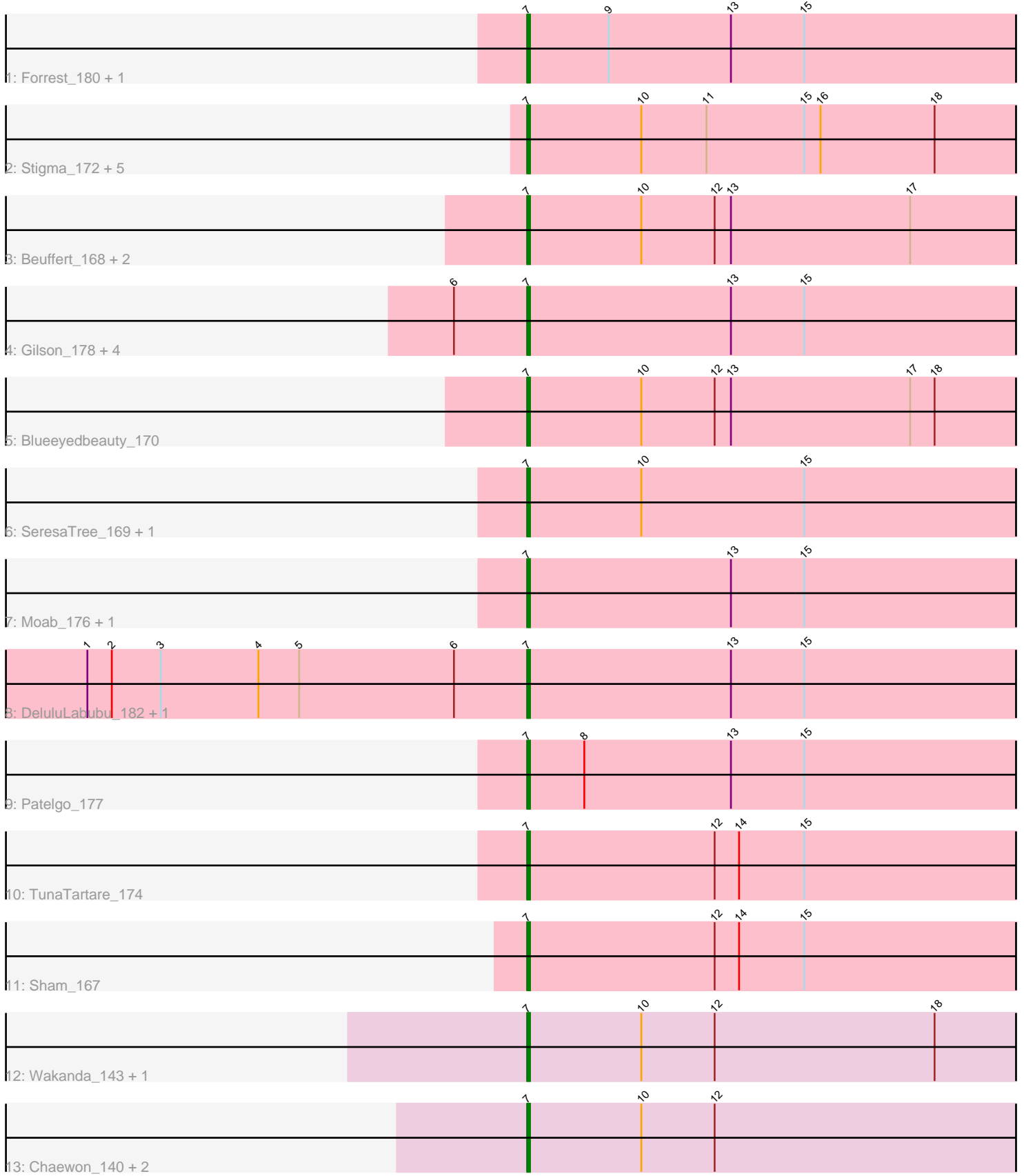


Pham 305210



Note: Tracks are now grouped by subcluster and scaled. Switching in subcluster is indicated by changes in track color. Track scale is now set by default to display the region 30 bp upstream of start 1 to 30 bp downstream of the last possible start. If this default region is judged to be packed too tightly with annotated starts, the track will be further scaled to only show that region of the ORF with annotated starts. This action will be indicated by adding "Zoomed" to the title. For starts, yellow indicates the location of called starts comprised solely of Glimmer/GeneMark auto-annotations, green indicates the location of called starts with at least 1 manual gene annotation.

Pham 305210 Report

This analysis was run 06/08/26 on database version 649.

Pham number 305210 has 31 members, 3 are drafts.

Phages represented in each track:

- Track 1 : Forrest_180, Jada_177
- Track 2 : Stigma_172, Belfort_174, Karp_168, Westy_176, Comrade_171, SparkleGoddess_174
- Track 3 : Beuffert_168, Annadreamy_162, Limpid_169
- Track 4 : Gilson_178, Emma1919_179, Kenrey_181, Phredrick_179, Maupel_179
- Track 5 : Blueeyedbeauty_170
- Track 6 : SeresaTree_169, Faust_167
- Track 7 : Moab_176, Francob_175
- Track 8 : DeluluLabubu_182, MeganTheeKilla_178
- Track 9 : Patelgo_177
- Track 10 : TunaTartare_174
- Track 11 : Sham_167
- Track 12 : Wakanda_143, Muntaha_144
- Track 13 : Chaewon_140, BillNye_136, Circinus_137

Summary of Final Annotations (See graph section above for start numbers):

The start number called the most often in the published annotations is 7, it was called in 28 of the 28 non-draft genes in the pham.

Genes that call this "Most Annotated" start:

- Annadreamy_162, Belfort_174, Beuffert_168, BillNye_136, Blueeyedbeauty_170, Chaewon_140, Circinus_137, Comrade_171, DeluluLabubu_182, Emma1919_179, Faust_167, Forrest_180, Francob_175, Gilson_178, Jada_177, Karp_168, Kenrey_181, Limpid_169, Maupel_179, MeganTheeKilla_178, Moab_176, Muntaha_144, Patelgo_177, Phredrick_179, SeresaTree_169, Sham_167, SparkleGoddess_174, Stigma_172, TunaTartare_174, Wakanda_143, Westy_176,

Genes that have the "Most Annotated" start but do not call it:

-

Genes that do not have the "Most Annotated" start:

-

Summary by start number:

Start 7:

- Found in 31 of 31 (100.0%) of genes in pham
- Manual Annotations of this start: 28 of 28
- Called 100.0% of time when present
- Phage (with cluster) where this start called: Annadreamy_162 (BK1), Belfort_174 (BK1), Beuffert_168 (BK1), BillNye_136 (BK2), Blueeyedbeauty_170 (BK1), Chaewon_140 (BK2), Circinus_137 (BK2), Comrade_171 (BK1), DeluluLabubu_182 (BK1), Emma1919_179 (BK1), Faust_167 (BK1), Forrest_180 (BK1), Francob_175 (BK1), Gilson_178 (BK1), Jada_177 (BK1), Karp_168 (BK1), Kenrey_181 (BK1), Limpid_169 (BK1), Maupel_179 (BK1), MeganTheeKilla_178 (BK1), Moab_176 (BK1), Muntaha_144 (BK2), Patelgo_177 (BK1), Phredrick_179 (BK1), SeresaTree_169 (BK1), Sham_167 (BK1), SparkleGoddess_174 (BK1), Stigma_172 (BK1), TunaTartare_174 (BK1), Wakanda_143 (BK2), Westy_176 (BK1),

Summary by clusters:

There are 2 clusters represented in this pham: BK1, BK2,

Info for manual annotations of cluster BK1:

- Start number 7 was manually annotated 24 times for cluster BK1.

Info for manual annotations of cluster BK2:

- Start number 7 was manually annotated 4 times for cluster BK2.

Gene Information:

Gene: Annadreamy_162 Start: 88448, Stop: 88705, Start Num: 7

Candidate Starts for Annadreamy_162:

(Start: 7 @88448 has 28 MA's), (10, 88490), (12, 88517), (13, 88523), (17, 88589),

Gene: Belfort_174 Start: 94272, Stop: 94532, Start Num: 7

Candidate Starts for Belfort_174:

(Start: 7 @94272 has 28 MA's), (10, 94314), (11, 94338), (15, 94374), (16, 94380), (18, 94422),

Gene: Beuffert_168 Start: 92631, Stop: 92888, Start Num: 7

Candidate Starts for Beuffert_168:

(Start: 7 @92631 has 28 MA's), (10, 92673), (12, 92700), (13, 92706), (17, 92772),

Gene: BillNye_136 Start: 83857, Stop: 84108, Start Num: 7

Candidate Starts for BillNye_136:

(Start: 7 @83857 has 28 MA's), (10, 83899), (12, 83926),

Gene: Blueeyedbeauty_170 Start: 92215, Stop: 92472, Start Num: 7

Candidate Starts for Blueeyedbeauty_170:

(Start: 7 @92215 has 28 MA's), (10, 92257), (12, 92284), (13, 92290), (17, 92356), (18, 92365),

Gene: Chaewon_140 Start: 83835, Stop: 84086, Start Num: 7

Candidate Starts for Chaewon_140:

(Start: 7 @83835 has 28 MA's), (10, 83877), (12, 83904),

Gene: Circinus_137 Start: 83825, Stop: 84076, Start Num: 7

Candidate Starts for Circinus_137:

(Start: 7 @83825 has 28 MA's), (10, 83867), (12, 83894),

Gene: Comrade_171 Start: 94474, Stop: 94734, Start Num: 7

Candidate Starts for Comrade_171:

(Start: 7 @94474 has 28 MA's), (10, 94516), (11, 94540), (15, 94576), (16, 94582), (18, 94624),

Gene: DeluluLabubu_182 Start: 95497, Stop: 95757, Start Num: 7

Candidate Starts for DeluluLabubu_182:

(1, 95335), (2, 95344), (3, 95362), (4, 95398), (5, 95413), (6, 95470), (Start: 7 @95497 has 28 MA's), (13, 95572), (15, 95599),

Gene: Emma1919_179 Start: 93516, Stop: 93776, Start Num: 7

Candidate Starts for Emma1919_179:

(6, 93489), (Start: 7 @93516 has 28 MA's), (13, 93591), (15, 93618),

Gene: Faust_167 Start: 93603, Stop: 93857, Start Num: 7

Candidate Starts for Faust_167:

(Start: 7 @93603 has 28 MA's), (10, 93645), (15, 93705),

Gene: Forrest_180 Start: 94951, Stop: 95211, Start Num: 7

Candidate Starts for Forrest_180:

(Start: 7 @94951 has 28 MA's), (9, 94981), (13, 95026), (15, 95053),

Gene: Francob_175 Start: 93507, Stop: 93767, Start Num: 7

Candidate Starts for Francob_175:

(Start: 7 @93507 has 28 MA's), (13, 93582), (15, 93609),

Gene: Gilson_178 Start: 93478, Stop: 93738, Start Num: 7

Candidate Starts for Gilson_178:

(6, 93451), (Start: 7 @93478 has 28 MA's), (13, 93553), (15, 93580),

Gene: Jada_177 Start: 93644, Stop: 93904, Start Num: 7

Candidate Starts for Jada_177:

(Start: 7 @93644 has 28 MA's), (9, 93674), (13, 93719), (15, 93746),

Gene: Karp_168 Start: 93698, Stop: 93958, Start Num: 7

Candidate Starts for Karp_168:

(Start: 7 @93698 has 28 MA's), (10, 93740), (11, 93764), (15, 93800), (16, 93806), (18, 93848),

Gene: Kenrey_181 Start: 94511, Stop: 94771, Start Num: 7

Candidate Starts for Kenrey_181:

(6, 94484), (Start: 7 @94511 has 28 MA's), (13, 94586), (15, 94613),

Gene: Limpid_169 Start: 93761, Stop: 94018, Start Num: 7

Candidate Starts for Limpid_169:

(Start: 7 @93761 has 28 MA's), (10, 93803), (12, 93830), (13, 93836), (17, 93902),

Gene: Maupel_179 Start: 93478, Stop: 93738, Start Num: 7

Candidate Starts for Maupel_179:

(6, 93451), (Start: 7 @93478 has 28 MA's), (13, 93553), (15, 93580),

Gene: MeganTheeKilla_178 Start: 93547, Stop: 93807, Start Num: 7
Candidate Starts for MeganTheeKilla_178:
(1, 93385), (2, 93394), (3, 93412), (4, 93448), (5, 93463), (6, 93520), (Start: 7 @93547 has 28 MA's),
(13, 93622), (15, 93649),

Gene: Moab_176 Start: 95987, Stop: 96247, Start Num: 7
Candidate Starts for Moab_176:
(Start: 7 @95987 has 28 MA's), (13, 96062), (15, 96089),

Gene: Muntaha_144 Start: 82806, Stop: 83057, Start Num: 7
Candidate Starts for Muntaha_144:
(Start: 7 @82806 has 28 MA's), (10, 82848), (12, 82875), (18, 82956),

Gene: Patelgo_177 Start: 96445, Stop: 96705, Start Num: 7
Candidate Starts for Patelgo_177:
(Start: 7 @96445 has 28 MA's), (8, 96466), (13, 96520), (15, 96547),

Gene: Phredrick_179 Start: 93142, Stop: 93402, Start Num: 7
Candidate Starts for Phredrick_179:
(6, 93115), (Start: 7 @93142 has 28 MA's), (13, 93217), (15, 93244),

Gene: SeresaTree_169 Start: 92985, Stop: 93239, Start Num: 7
Candidate Starts for SeresaTree_169:
(Start: 7 @92985 has 28 MA's), (10, 93027), (15, 93087),

Gene: Sham_167 Start: 94602, Stop: 94856, Start Num: 7
Candidate Starts for Sham_167:
(Start: 7 @94602 has 28 MA's), (12, 94671), (14, 94680), (15, 94704),

Gene: SparkleGoddess_174 Start: 94682, Stop: 94942, Start Num: 7
Candidate Starts for SparkleGoddess_174:
(Start: 7 @94682 has 28 MA's), (10, 94724), (11, 94748), (15, 94784), (16, 94790), (18, 94832),

Gene: Stigma_172 Start: 94919, Stop: 95179, Start Num: 7
Candidate Starts for Stigma_172:
(Start: 7 @94919 has 28 MA's), (10, 94961), (11, 94985), (15, 95021), (16, 95027), (18, 95069),

Gene: TunaTartare_174 Start: 96314, Stop: 96568, Start Num: 7
Candidate Starts for TunaTartare_174:
(Start: 7 @96314 has 28 MA's), (12, 96383), (14, 96392), (15, 96416),

Gene: Wakanda_143 Start: 82748, Stop: 82999, Start Num: 7
Candidate Starts for Wakanda_143:
(Start: 7 @82748 has 28 MA's), (10, 82790), (12, 82817), (18, 82898),

Gene: Westy_176 Start: 95231, Stop: 95491, Start Num: 7
Candidate Starts for Westy_176:
(Start: 7 @95231 has 28 MA's), (10, 95273), (11, 95297), (15, 95333), (16, 95339), (18, 95381),