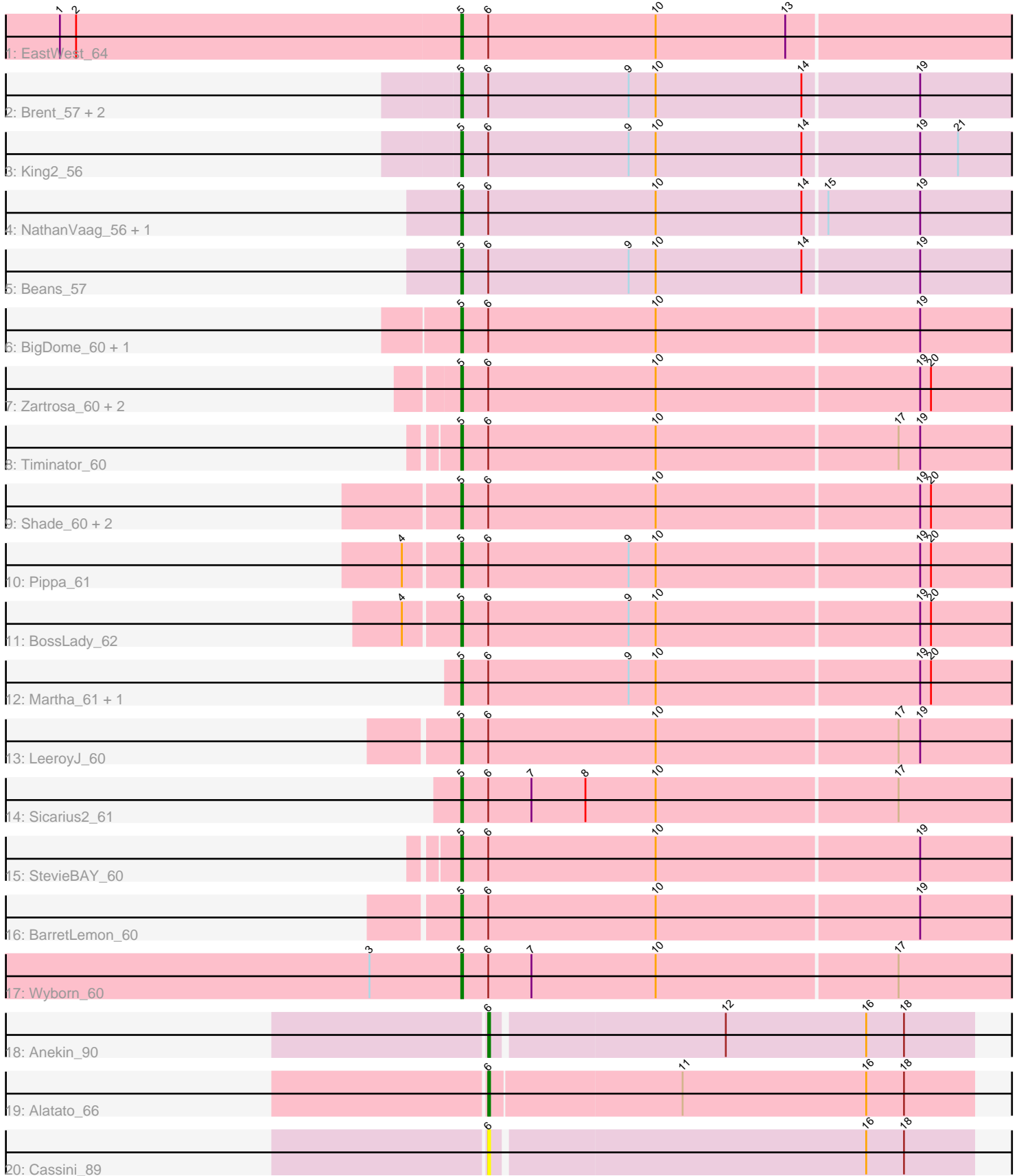


Pham 305226



Note: Tracks are now grouped by subcluster and scaled. Switching in subcluster is indicated by changes in track color. Track scale is now set by default to display the region 30 bp upstream of start 1 to 30 bp downstream of the last possible start. If this default region is judged to be packed too tightly with annotated starts, the track will be further scaled to only show that region of the ORF with annotated starts. This action will be indicated by adding "Zoomed" to the title. For starts, yellow indicates the location of called starts comprised solely of Glimmer/GeneMark auto-annotations, green indicates the location of called starts with at least 1 manual gene annotation.

Pham 305226 Report

This analysis was run 06/08/26 on database version 649.

Pham number 305226 has 29 members, 2 are drafts.

Phages represented in each track:

- Track 1 : EastWest_64
- Track 2 : Brent_57, Jawnski_56, Franzy_56
- Track 3 : King2_56
- Track 4 : NathanVaag_56, Piccoletto_57
- Track 5 : Beans_57
- Track 6 : BigDome_60, GravityBall_60
- Track 7 : Zartrosa_60, Sonny_59, Grekaycon_61
- Track 8 : Timinator_60
- Track 9 : Shade_60, JKerns_60, Jordan_60
- Track 10 : Pippa_61
- Track 11 : BossLady_62
- Track 12 : Martha_61, TaeYoung_62
- Track 13 : LeeroyJ_60
- Track 14 : Sicarius2_61
- Track 15 : StevieBAY_60
- Track 16 : BarretLemon_60
- Track 17 : Wyborn_60
- Track 18 : Anekin_90
- Track 19 : Alatato_66
- Track 20 : Cassini_89

Summary of Final Annotations (See graph section above for start numbers):

The start number called the most often in the published annotations is 5, it was called in 25 of the 27 non-draft genes in the pham.

Genes that call this "Most Annotated" start:

- BarretLemon_60, Beans_57, BigDome_60, BossLady_62, Brent_57, EastWest_64, Franzy_56, GravityBall_60, Grekaycon_61, JKerns_60, Jawnski_56, Jordan_60, King2_56, LeeroyJ_60, Martha_61, NathanVaag_56, Piccoletto_57, Pippa_61, Shade_60, Sicarius2_61, Sonny_59, StevieBAY_60, TaeYoung_62, Timinator_60, Wyborn_60, Zartrosa_60,

Genes that have the "Most Annotated" start but do not call it:

-

Genes that do not have the "Most Annotated" start:

- Alatao_66, Anekin_90, Cassini_89,

Summary by start number:

Start 5:

- Found in 26 of 29 (89.7%) of genes in pham
- Manual Annotations of this start: 25 of 27
- Called 100.0% of time when present
- Phage (with cluster) where this start called: BarretLemon_60 (AO2), Beans_57 (AO1), BigDome_60 (AO2), BossLady_62 (AO2), Brent_57 (AO1), EastWest_64 (AO), Franzy_56 (AO1), GravityBall_60 (AO2), Grekaycon_61 (AO2), JKerns_60 (AO2), Jawnski_56 (AO1), Jordan_60 (AO2), King2_56 (AO1), LeeroyJ_60 (AO2), Martha_61 (AO2), NathanVaag_56 (AO1), Piccoletto_57 (AO1), Pippa_61 (AO2), Shade_60 (AO2), Sicarius2_61 (AO2), Sonny_59 (AO2), StevieBAY_60 (AO2), TaeYoung_62 (AO2), Timinator_60 (AO2), Wyborn_60 (AO2), Zartrosa_60 (AO2),

Start 6:

- Found in 29 of 29 (100.0%) of genes in pham
- Manual Annotations of this start: 2 of 27
- Called 10.3% of time when present
- Phage (with cluster) where this start called: Alatao_66 (FB), Anekin_90 (AY), Cassini_89 (FN),

Summary by clusters:

There are 6 clusters represented in this pham: AO, FB, AO2, AO1, AY, FN,

Info for manual annotations of cluster AO:

- Start number 5 was manually annotated 1 time for cluster AO.

Info for manual annotations of cluster AO1:

- Start number 5 was manually annotated 7 times for cluster AO1.

Info for manual annotations of cluster AO2:

- Start number 5 was manually annotated 17 times for cluster AO2.

Info for manual annotations of cluster AY:

- Start number 6 was manually annotated 1 time for cluster AY.

Info for manual annotations of cluster FB:

- Start number 6 was manually annotated 1 time for cluster FB.

Gene Information:

Gene: Alatao_66 Start: 36652, Stop: 36918, Start Num: 6

Candidate Starts for Alatao_66:

(Start: 6 @36652 has 2 MA's), (11, 36757), (16, 36859), (18, 36880),

Gene: Anekin_90 Start: 50152, Stop: 50415, Start Num: 6
Candidate Starts for Anekin_90:
(Start: 6 @50152 has 2 MA's), (12, 50278), (16, 50356), (18, 50377),

Gene: BarretLemon_60 Start: 40898, Stop: 41215, Start Num: 5
Candidate Starts for BarretLemon_60:
(Start: 5 @40898 has 25 MA's), (Start: 6 @40913 has 2 MA's), (10, 41006), (19, 41150),

Gene: Beans_57 Start: 40647, Stop: 40964, Start Num: 5
Candidate Starts for Beans_57:
(Start: 5 @40647 has 25 MA's), (Start: 6 @40662 has 2 MA's), (9, 40740), (10, 40755), (14, 40836),
(19, 40899),

Gene: BigDome_60 Start: 41119, Stop: 41436, Start Num: 5
Candidate Starts for BigDome_60:
(Start: 5 @41119 has 25 MA's), (Start: 6 @41134 has 2 MA's), (10, 41227), (19, 41371),

Gene: BossLady_62 Start: 41279, Stop: 41596, Start Num: 5
Candidate Starts for BossLady_62:
(4, 41249), (Start: 5 @41279 has 25 MA's), (Start: 6 @41294 has 2 MA's), (9, 41372), (10, 41387), (19,
41531), (20, 41537),

Gene: Brent_57 Start: 40890, Stop: 41213, Start Num: 5
Candidate Starts for Brent_57:
(Start: 5 @40890 has 25 MA's), (Start: 6 @40905 has 2 MA's), (9, 40983), (10, 40998), (14, 41079),
(19, 41142),

Gene: Cassini_89 Start: 49546, Stop: 49809, Start Num: 6
Candidate Starts for Cassini_89:
(Start: 6 @49546 has 2 MA's), (16, 49750), (18, 49771),

Gene: EastWest_64 Start: 40104, Stop: 40406, Start Num: 5
Candidate Starts for EastWest_64:
(1, 39882), (2, 39891), (Start: 5 @40104 has 25 MA's), (Start: 6 @40119 has 2 MA's), (10, 40212), (13,
40284),

Gene: Franzy_56 Start: 40906, Stop: 41229, Start Num: 5
Candidate Starts for Franzy_56:
(Start: 5 @40906 has 25 MA's), (Start: 6 @40921 has 2 MA's), (9, 40999), (10, 41014), (14, 41095),
(19, 41158),

Gene: GravityBall_60 Start: 41198, Stop: 41515, Start Num: 5
Candidate Starts for GravityBall_60:
(Start: 5 @41198 has 25 MA's), (Start: 6 @41213 has 2 MA's), (10, 41306), (19, 41450),

Gene: Grekaycon_61 Start: 41158, Stop: 41475, Start Num: 5
Candidate Starts for Grekaycon_61:
(Start: 5 @41158 has 25 MA's), (Start: 6 @41173 has 2 MA's), (10, 41266), (19, 41410), (20, 41416),

Gene: JKerns_60 Start: 41225, Stop: 41542, Start Num: 5
Candidate Starts for JKerns_60:
(Start: 5 @41225 has 25 MA's), (Start: 6 @41240 has 2 MA's), (10, 41333), (19, 41477), (20, 41483),

Gene: Jawnski_56 Start: 40415, Stop: 40738, Start Num: 5

Candidate Starts for Jawnski_56:

(Start: 5 @40415 has 25 MA's), (Start: 6 @40430 has 2 MA's), (9, 40508), (10, 40523), (14, 40604), (19, 40667),

Gene: Jordan_60 Start: 41039, Stop: 41356, Start Num: 5

Candidate Starts for Jordan_60:

(Start: 5 @41039 has 25 MA's), (Start: 6 @41054 has 2 MA's), (10, 41147), (19, 41291), (20, 41297),

Gene: King2_56 Start: 40767, Stop: 41090, Start Num: 5

Candidate Starts for King2_56:

(Start: 5 @40767 has 25 MA's), (Start: 6 @40782 has 2 MA's), (9, 40860), (10, 40875), (14, 40956), (19, 41019), (21, 41040),

Gene: LeeroyJ_60 Start: 40927, Stop: 41244, Start Num: 5

Candidate Starts for LeeroyJ_60:

(Start: 5 @40927 has 25 MA's), (Start: 6 @40942 has 2 MA's), (10, 41035), (17, 41167), (19, 41179),

Gene: Martha_61 Start: 41264, Stop: 41581, Start Num: 5

Candidate Starts for Martha_61:

(Start: 5 @41264 has 25 MA's), (Start: 6 @41279 has 2 MA's), (9, 41357), (10, 41372), (19, 41516), (20, 41522),

Gene: NathanVaag_56 Start: 40427, Stop: 40744, Start Num: 5

Candidate Starts for NathanVaag_56:

(Start: 5 @40427 has 25 MA's), (Start: 6 @40442 has 2 MA's), (10, 40535), (14, 40616), (15, 40628), (19, 40679),

Gene: Piccoletto_57 Start: 40620, Stop: 40937, Start Num: 5

Candidate Starts for Piccoletto_57:

(Start: 5 @40620 has 25 MA's), (Start: 6 @40635 has 2 MA's), (10, 40728), (14, 40809), (15, 40821), (19, 40872),

Gene: Pippa_61 Start: 41235, Stop: 41552, Start Num: 5

Candidate Starts for Pippa_61:

(4, 41205), (Start: 5 @41235 has 25 MA's), (Start: 6 @41250 has 2 MA's), (9, 41328), (10, 41343), (19, 41487), (20, 41493),

Gene: Shade_60 Start: 40961, Stop: 41278, Start Num: 5

Candidate Starts for Shade_60:

(Start: 5 @40961 has 25 MA's), (Start: 6 @40976 has 2 MA's), (10, 41069), (19, 41213), (20, 41219),

Gene: Sicarius2_61 Start: 39649, Stop: 39969, Start Num: 5

Candidate Starts for Sicarius2_61:

(Start: 5 @39649 has 25 MA's), (Start: 6 @39664 has 2 MA's), (7, 39688), (8, 39718), (10, 39757), (17, 39889),

Gene: Sonny_59 Start: 40710, Stop: 41027, Start Num: 5

Candidate Starts for Sonny_59:

(Start: 5 @40710 has 25 MA's), (Start: 6 @40725 has 2 MA's), (10, 40818), (19, 40962), (20, 40968),

Gene: StevieBAY_60 Start: 41191, Stop: 41508, Start Num: 5

Candidate Starts for StevieBAY_60:

(Start: 5 @41191 has 25 MA's), (Start: 6 @41206 has 2 MA's), (10, 41299), (19, 41443),

Gene: TaeYoung_62 Start: 41237, Stop: 41554, Start Num: 5

Candidate Starts for TaeYoung_62:

(Start: 5 @41237 has 25 MA's), (Start: 6 @41252 has 2 MA's), (9, 41330), (10, 41345), (19, 41489), (20, 41495),

Gene: Timinator_60 Start: 41040, Stop: 41357, Start Num: 5

Candidate Starts for Timinator_60:

(Start: 5 @41040 has 25 MA's), (Start: 6 @41055 has 2 MA's), (10, 41148), (17, 41280), (19, 41292),

Gene: Wyborn_60 Start: 40366, Stop: 40686, Start Num: 5

Candidate Starts for Wyborn_60:

(3, 40315), (Start: 5 @40366 has 25 MA's), (Start: 6 @40381 has 2 MA's), (7, 40405), (10, 40474), (17, 40606),

Gene: Zartrosa_60 Start: 41008, Stop: 41325, Start Num: 5

Candidate Starts for Zartrosa_60:

(Start: 5 @41008 has 25 MA's), (Start: 6 @41023 has 2 MA's), (10, 41116), (19, 41260), (20, 41266),