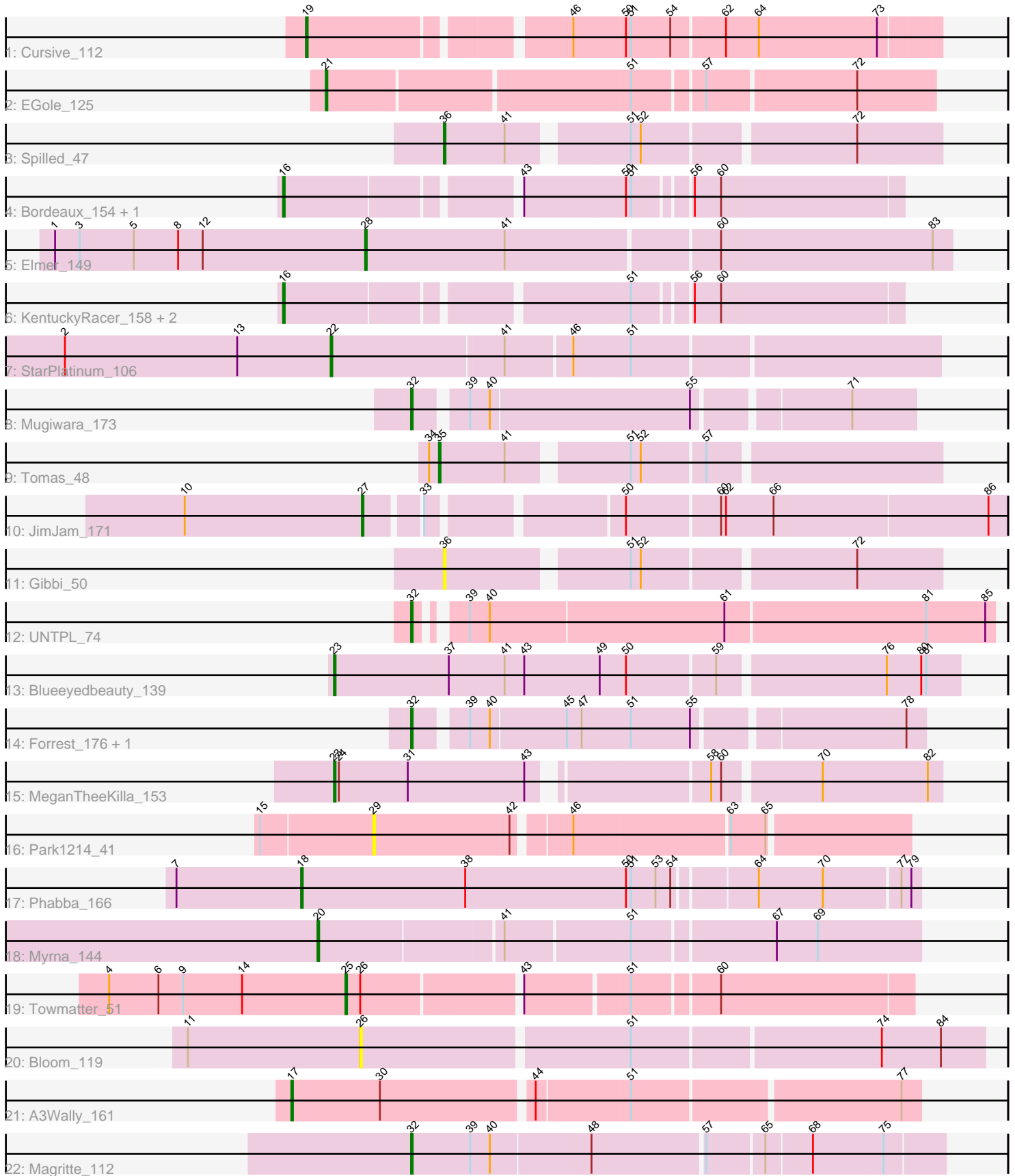


Pham 305250



Note: Tracks are now grouped by subcluster and scaled. Switching in subcluster is indicated by changes in track color. Track scale is now set by default to display the region 30 bp upstream of start 1 to 30 bp downstream of the last possible start. If this default region is judged to be packed too tightly with annotated starts, the track will be further scaled to only show that region of the ORF with annotated starts. This action will be indicated by adding "Zoomed" to the title. For starts, yellow indicates the location of called starts comprised solely of Glimmer/GeneMark auto-annotations, green indicates the location of called starts with at least 1 manual gene annotation.

## Pham 305250 Report

This analysis was run 06/08/26 on database version 649.

Pham number 305250 has 26 members, 4 are drafts.

Phages represented in each track:

- Track 1 : Cursive\_112
- Track 2 : EGole\_125
- Track 3 : Spilled\_47
- Track 4 : Bordeaux\_154, AcciDwight\_163
- Track 5 : Elmer\_149
- Track 6 : KentuckyRacer\_158, StarPlatinum\_159, MulchMansion\_147
- Track 7 : StarPlatinum\_106
- Track 8 : Mugiwara\_173
- Track 9 : Tomas\_48
- Track 10 : JimJam\_171
- Track 11 : Gibbi\_50
- Track 12 : UNTPL\_74
- Track 13 : Blueeyedbeauty\_139
- Track 14 : Forrest\_176, DeluluLabubu\_178
- Track 15 : MeganTheeKilla\_153
- Track 16 : Park1214\_41
- Track 17 : Phabba\_166
- Track 18 : Myrna\_144
- Track 19 : Towmatter\_51
- Track 20 : Bloom\_119
- Track 21 : A3Wally\_161
- Track 22 : Magritte\_112

### ***Summary of Final Annotations (See graph section above for start numbers):***

The start number called the most often in the published annotations is 32, it was called in 5 of the 22 non-draft genes in the pham.

Genes that call this "Most Annotated" start:

- DeluluLabubu\_178, Forrest\_176, Magritte\_112, Mugiwara\_173, UNTPL\_74,

Genes that have the "Most Annotated" start but do not call it:

-

Genes that do not have the "Most Annotated" start:

- A3Wally\_161, AcciDwight\_163, Bloom\_119, Blueeyedbeauty\_139, Bordeaux\_154, Cursive\_112, EGole\_125, Elmer\_149, Gibbi\_50, JimJam\_171, KentuckyRacer\_158, MeganTheeKilla\_153, MulchMansion\_147, Myrna\_144, Park1214\_41, Phabba\_166, Spilled\_47, StarPlatinum\_106, StarPlatinum\_159, Tomas\_48, Towmatter\_51,

### Summary by start number:

Start 16:

- Found in 5 of 26 ( 19.2% ) of genes in pham
- Manual Annotations of this start: 4 of 22
- Called 100.0% of time when present
- Phage (with cluster) where this start called: AcciDwight\_163 (BE2), Bordeaux\_154 (BE2), KentuckyRacer\_158 (BE2), MulchMansion\_147 (BE1), StarPlatinum\_159 (BE2),

Start 17:

- Found in 1 of 26 ( 3.8% ) of genes in pham
- Manual Annotations of this start: 1 of 22
- Called 100.0% of time when present
- Phage (with cluster) where this start called: A3Wally\_161 (GD1),

Start 18:

- Found in 1 of 26 ( 3.8% ) of genes in pham
- Manual Annotations of this start: 1 of 22
- Called 100.0% of time when present
- Phage (with cluster) where this start called: Phabba\_166 (C2),

Start 19:

- Found in 1 of 26 ( 3.8% ) of genes in pham
- Manual Annotations of this start: 1 of 22
- Called 100.0% of time when present
- Phage (with cluster) where this start called: Cursive\_112 (BE1),

Start 20:

- Found in 1 of 26 ( 3.8% ) of genes in pham
- Manual Annotations of this start: 1 of 22
- Called 100.0% of time when present
- Phage (with cluster) where this start called: Myrna\_144 (C2),

Start 21:

- Found in 1 of 26 ( 3.8% ) of genes in pham
- Manual Annotations of this start: 1 of 22
- Called 100.0% of time when present
- Phage (with cluster) where this start called: EGole\_125 (BE1),

Start 22:

- Found in 1 of 26 ( 3.8% ) of genes in pham
- Manual Annotations of this start: 1 of 22
- Called 100.0% of time when present
- Phage (with cluster) where this start called: StarPlatinum\_106 (BE2),

Start 23:

- Found in 2 of 26 ( 7.7% ) of genes in pham
- Manual Annotations of this start: 2 of 22
- Called 100.0% of time when present
- Phage (with cluster) where this start called: Blueeyedbeauty\_139 (BK1), MeganTheeKilla\_153 (BK1),

Start 25:

- Found in 1 of 26 ( 3.8% ) of genes in pham
- Manual Annotations of this start: 1 of 22
- Called 100.0% of time when present
- Phage (with cluster) where this start called: Towmatter\_51 (DL),

Start 26:

- Found in 2 of 26 ( 7.7% ) of genes in pham
- No Manual Annotations of this start.
- Called 50.0% of time when present
- Phage (with cluster) where this start called: Bloom\_119 (FC),

Start 27:

- Found in 1 of 26 ( 3.8% ) of genes in pham
- Manual Annotations of this start: 1 of 22
- Called 100.0% of time when present
- Phage (with cluster) where this start called: JimJam\_171 (BE2),

Start 28:

- Found in 1 of 26 ( 3.8% ) of genes in pham
- Manual Annotations of this start: 1 of 22
- Called 100.0% of time when present
- Phage (with cluster) where this start called: Elmer\_149 (BE2),

Start 29:

- Found in 1 of 26 ( 3.8% ) of genes in pham
- No Manual Annotations of this start.
- Called 100.0% of time when present
- Phage (with cluster) where this start called: Park1214\_41 (BS),

Start 32:

- Found in 5 of 26 ( 19.2% ) of genes in pham
- Manual Annotations of this start: 5 of 22
- Called 100.0% of time when present
- Phage (with cluster) where this start called: DeluluLabubu\_178 (BK1), Forrest\_176 (BK1), Magritte\_112 (singleton), Mugiwara\_173 (BE2), UNTPL\_74 (BH),

Start 35:

- Found in 1 of 26 ( 3.8% ) of genes in pham
- Manual Annotations of this start: 1 of 22
- Called 100.0% of time when present
- Phage (with cluster) where this start called: Tomas\_48 (BE2),

Start 36:

- Found in 2 of 26 ( 7.7% ) of genes in pham
- Manual Annotations of this start: 1 of 22
- Called 100.0% of time when present

- Phage (with cluster) where this start called: Gibbi\_50 (BE2), Spilled\_47 (BE2),

### **Summary by clusters:**

There are 10 clusters represented in this pham: GD1, singleton, BH, DL, FC, BK1, BS, BE2, C2, BE1,

Info for manual annotations of cluster BE1:

- Start number 16 was manually annotated 1 time for cluster BE1.
- Start number 19 was manually annotated 1 time for cluster BE1.
- Start number 21 was manually annotated 1 time for cluster BE1.

Info for manual annotations of cluster BE2:

- Start number 16 was manually annotated 3 times for cluster BE2.
- Start number 22 was manually annotated 1 time for cluster BE2.
- Start number 27 was manually annotated 1 time for cluster BE2.
- Start number 28 was manually annotated 1 time for cluster BE2.
- Start number 32 was manually annotated 1 time for cluster BE2.
- Start number 35 was manually annotated 1 time for cluster BE2.
- Start number 36 was manually annotated 1 time for cluster BE2.

Info for manual annotations of cluster BH:

- Start number 32 was manually annotated 1 time for cluster BH.

Info for manual annotations of cluster BK1:

- Start number 23 was manually annotated 2 times for cluster BK1.
- Start number 32 was manually annotated 2 times for cluster BK1.

Info for manual annotations of cluster C2:

- Start number 18 was manually annotated 1 time for cluster C2.
- Start number 20 was manually annotated 1 time for cluster C2.

Info for manual annotations of cluster DL:

- Start number 25 was manually annotated 1 time for cluster DL.

Info for manual annotations of cluster GD1:

- Start number 17 was manually annotated 1 time for cluster GD1.

### **Gene Information:**

Gene: A3Wally\_161 Start: 93240, Stop: 93602, Start Num: 17

Candidate Starts for A3Wally\_161:

(Start: 17 @93240 has 1 MA's), (30, 93294), (44, 93381), (51, 93435), (77, 93591),

Gene: AcciDwight\_163 Start: 88123, Stop: 88467, Start Num: 16

Candidate Starts for AcciDwight\_163:

(Start: 16 @88123 has 4 MA's), (43, 88252), (50, 88312), (51, 88315), (56, 88345), (60, 88360),

Gene: Bloom\_119 Start: 91780, Stop: 92142, Start Num: 26

Candidate Starts for Bloom\_119:  
(11, 91675), (26, 91780), (51, 91936), (74, 92080), (84, 92116),

Gene: Blueeyedbeauty\_139 Start: 79396, Stop: 79761, Start Num: 23  
Candidate Starts for Blueeyedbeauty\_139:  
(Start: 23 @79396 has 2 MA's), (37, 79465), (41, 79498), (43, 79510), (49, 79555), (50, 79570), (59, 79621), (76, 79717), (80, 79738), (81, 79741),

Gene: Bordeaux\_154 Start: 87839, Stop: 88183, Start Num: 16  
Candidate Starts for Bordeaux\_154:  
(Start: 16 @87839 has 4 MA's), (43, 87968), (50, 88028), (51, 88031), (56, 88061), (60, 88076),

Gene: Cursive\_112 Start: 77217, Stop: 77573, Start Num: 19  
Candidate Starts for Cursive\_112:  
(Start: 19 @77217 has 1 MA's), (46, 77361), (50, 77391), (51, 77394), (54, 77418), (62, 77448), (64, 77466), (73, 77538),

Gene: DeluluLabubu\_178 Start: 94536, Stop: 94826, Start Num: 32  
Candidate Starts for DeluluLabubu\_178:  
(Start: 32 @94536 has 5 MA's), (39, 94563), (40, 94575), (45, 94620), (47, 94629), (51, 94659), (55, 94695), (78, 94815),

Gene: EGole\_125 Start: 82153, Stop: 82503, Start Num: 21  
Candidate Starts for EGole\_125:  
(Start: 21 @82153 has 1 MA's), (51, 82330), (57, 82369), (72, 82456),

Gene: Elmer\_149 Start: 88649, Stop: 88993, Start Num: 28  
Candidate Starts for Elmer\_149:  
(1, 88460), (3, 88475), (5, 88508), (8, 88535), (12, 88550), (Start: 28 @88649 has 1 MA's), (41, 88733), (60, 88856), (83, 88982),

Gene: Forrest\_176 Start: 93990, Stop: 94280, Start Num: 32  
Candidate Starts for Forrest\_176:  
(Start: 32 @93990 has 5 MA's), (39, 94017), (40, 94029), (45, 94074), (47, 94083), (51, 94113), (55, 94149), (78, 94269),

Gene: Gibbi\_50 Start: 22359, Stop: 22634, Start Num: 36  
Candidate Starts for Gibbi\_50:  
(Start: 36 @22359 has 1 MA's), (51, 22458), (52, 22464), (72, 22584),

Gene: JimJam\_171 Start: 92515, Stop: 92871, Start Num: 27  
Candidate Starts for JimJam\_171:  
(10, 92407), (Start: 27 @92515 has 1 MA's), (33, 92545), (50, 92647), (60, 92701), (62, 92704), (66, 92731), (86, 92860),

Gene: KentuckyRacer\_158 Start: 88711, Stop: 89055, Start Num: 16  
Candidate Starts for KentuckyRacer\_158:  
(Start: 16 @88711 has 4 MA's), (51, 88903), (56, 88933), (60, 88948),

Gene: Magritte\_112 Start: 72994, Stop: 73305, Start Num: 32  
Candidate Starts for Magritte\_112:  
(Start: 32 @72994 has 5 MA's), (39, 73030), (40, 73042), (48, 73102), (57, 73168), (65, 73201), (68, 73228), (75, 73270),

Gene: MeganTheeKilla\_153 Start: 84120, Stop: 84458, Start Num: 23  
Candidate Starts for MeganTheeKilla\_153:  
(Start: 23 @84120 has 2 MA's), (24, 84123), (31, 84165), (43, 84234), (58, 84327), (60, 84333), (70, 84387), (82, 84450),

Gene: Mugiwara\_173 Start: 93300, Stop: 93584, Start Num: 32  
Candidate Starts for Mugiwara\_173:  
(Start: 32 @93300 has 5 MA's), (39, 93327), (40, 93339), (55, 93459), (71, 93546),

Gene: MulchMansion\_147 Start: 87054, Stop: 87398, Start Num: 16  
Candidate Starts for MulchMansion\_147:  
(Start: 16 @87054 has 4 MA's), (51, 87246), (56, 87276), (60, 87291),

Gene: Myrna\_144 Start: 92033, Stop: 92380, Start Num: 20  
Candidate Starts for Myrna\_144:  
(Start: 20 @92033 has 1 MA's), (41, 92141), (51, 92213), (67, 92294), (69, 92318),

Gene: Park1214\_41 Start: 12803, Stop: 13108, Start Num: 29  
Candidate Starts for Park1214\_41:  
(15, 12737), (29, 12803), (42, 12884), (46, 12914), (63, 13004), (65, 13025),

Gene: Phabba\_166 Start: 92816, Stop: 93178, Start Num: 18  
Candidate Starts for Phabba\_166:  
(7, 92741), (Start: 18 @92816 has 1 MA's), (38, 92915), (50, 93011), (51, 93014), (53, 93029), (54, 93038), (64, 93083), (70, 93122), (77, 93167), (79, 93173),

Gene: Spilled\_47 Start: 22319, Stop: 22594, Start Num: 36  
Candidate Starts for Spilled\_47:  
(Start: 36 @22319 has 1 MA's), (41, 22355), (51, 22418), (52, 22424), (72, 22544),

Gene: StarPlatinum\_106 Start: 73373, Stop: 73726, Start Num: 22  
Candidate Starts for StarPlatinum\_106:  
(2, 73211), (13, 73316), (Start: 22 @73373 has 1 MA's), (41, 73475), (46, 73514), (51, 73547),

Gene: StarPlatinum\_159 Start: 89611, Stop: 89955, Start Num: 16  
Candidate Starts for StarPlatinum\_159:  
(Start: 16 @89611 has 4 MA's), (51, 89803), (56, 89833), (60, 89848),

Gene: Tomas\_48 Start: 24558, Stop: 24836, Start Num: 35  
Candidate Starts for Tomas\_48:  
(34, 24552), (Start: 35 @24558 has 1 MA's), (41, 24597), (51, 24660), (52, 24666), (57, 24702),

Gene: Towmatter\_51 Start: 41131, Stop: 41451, Start Num: 25  
Candidate Starts for Towmatter\_51:  
(4, 40987), (6, 41017), (9, 41032), (14, 41068), (Start: 25 @41131 has 1 MA's), (26, 41140), (43, 41230), (51, 41290), (60, 41338),

Gene: UNTPL\_74 Start: 50402, Stop: 50737, Start Num: 32  
Candidate Starts for UNTPL\_74:  
(Start: 32 @50402 has 5 MA's), (39, 50423), (40, 50435), (61, 50576), (81, 50696), (85, 50732),