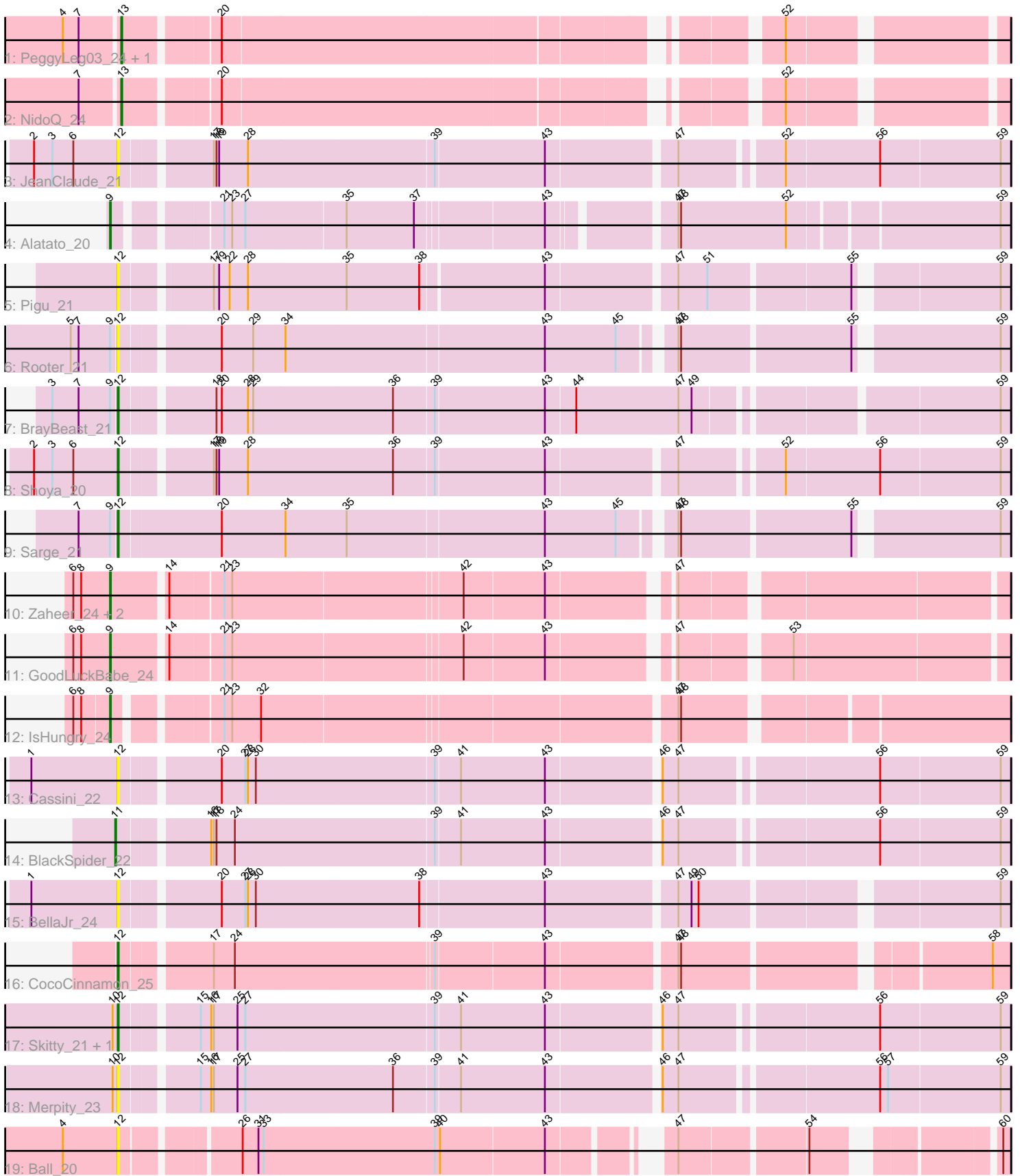


Pham 305289



Note: Tracks are now grouped by subcluster and scaled. Switching in subcluster is indicated by changes in track color. Track scale is now set by default to display the region 30 bp upstream of start 1 to 30 bp downstream of the last possible start. If this default region is judged to be packed too tightly with annotated starts, the track will be further scaled to only show that region of the ORF with annotated starts. This action will be indicated by adding "Zoomed" to the title. For starts, yellow indicates the location of called starts comprised solely of Glimmer/GeneMark auto-annotations, green indicates the location of called starts with at least 1 manual gene annotation.

## Pham 305289 Report

This analysis was run 06/08/26 on database version 649.

Pham number 305289 has 23 members, 8 are drafts.

Phages represented in each track:

- Track 1 : PeggyLeg03\_24, Constance\_24
- Track 2 : NidoQ\_24
- Track 3 : JeanClaude\_21
- Track 4 : Alatato\_20
- Track 5 : Pigu\_21
- Track 6 : Rooter\_21
- Track 7 : BrayBeast\_21
- Track 8 : Shoya\_20
- Track 9 : Sarge\_21
- Track 10 : Zaheer\_24, Yonex\_24, Ryan\_24
- Track 11 : GoodLuckBabe\_24
- Track 12 : IsHungry\_24
- Track 13 : Cassini\_22
- Track 14 : BlackSpider\_22
- Track 15 : BellaJr\_24
- Track 16 : CocoCinnamon\_25
- Track 17 : Skitty\_21, MrSmee\_21
- Track 18 : Merpity\_23
- Track 19 : Ball\_20

### ***Summary of Final Annotations (See graph section above for start numbers):***

The start number called the most often in the published annotations is 12, it was called in 6 of the 15 non-draft genes in the pham.

Genes that call this "Most Annotated" start:

- Ball\_20, BellaJr\_24, BrayBeast\_21, Cassini\_22, CocoCinnamon\_25, JeanClaude\_21, Merpity\_23, MrSmee\_21, Pigu\_21, Rooter\_21, Sarge\_21, Shoya\_20, Skitty\_21,

Genes that have the "Most Annotated" start but do not call it:

- 

Genes that do not have the "Most Annotated" start:

- Alatato\_20, BlackSpider\_22, Constance\_24, GoodLuckBabe\_24, IsHungry\_24, NidoQ\_24, PeggyLeg03\_24, Ryan\_24, Yonex\_24, Zaheer\_24,

### Summary by start number:

#### Start 9:

- Found in 9 of 23 ( 39.1% ) of genes in pham
- Manual Annotations of this start: 5 of 15
- Called 66.7% of time when present
- Phage (with cluster) where this start called: Alatato\_20 (FB), GoodLuckBabe\_24 (FF), IsHungry\_24 (FF), Ryan\_24 (FF), Yonex\_24 (FF), Zaheer\_24 (FF),

#### Start 11:

- Found in 1 of 23 ( 4.3% ) of genes in pham
- Manual Annotations of this start: 1 of 15
- Called 100.0% of time when present
- Phage (with cluster) where this start called: BlackSpider\_22 (FN),

#### Start 12:

- Found in 13 of 23 ( 56.5% ) of genes in pham
- Manual Annotations of this start: 6 of 15
- Called 100.0% of time when present
- Phage (with cluster) where this start called: Ball\_20 (singleton), BellaJr\_24 (FN), BrayBeast\_21 (FB), Cassini\_22 (FN), CocoCinnamon\_25 (FO), JeanClaude\_21 (FB), Merpity\_23 (FQ), MrSmee\_21 (FQ), Pigu\_21 (FB), Rooter\_21 (FB), Sarge\_21 (FB), Shoya\_20 (FB), Skitty\_21 (FQ),

#### Start 13:

- Found in 3 of 23 ( 13.0% ) of genes in pham
- Manual Annotations of this start: 3 of 15
- Called 100.0% of time when present
- Phage (with cluster) where this start called: Constance\_24 (FA), NidoQ\_24 (FA), PeggyLeg03\_24 (FA),

### Summary by clusters:

There are 7 clusters represented in this pham: FQ, singleton, FA, FB, FF, FN, FO,

#### Info for manual annotations of cluster FA:

- Start number 13 was manually annotated 3 times for cluster FA.

#### Info for manual annotations of cluster FB:

- Start number 9 was manually annotated 1 time for cluster FB.
- Start number 12 was manually annotated 3 times for cluster FB.

#### Info for manual annotations of cluster FF:

- Start number 9 was manually annotated 4 times for cluster FF.

#### Info for manual annotations of cluster FN:

- Start number 11 was manually annotated 1 time for cluster FN.

#### Info for manual annotations of cluster FO:

- Start number 12 was manually annotated 1 time for cluster FO.

Info for manual annotations of cluster FQ:

•Start number 12 was manually annotated 2 times for cluster FQ.

**Gene Information:**

Gene: Alata\_20 Start: 15782, Stop: 16714, Start Num: 9

Candidate Starts for Alata\_20:

(Start: 9 @15782 has 5 MA's), (21, 15884), (23, 15893), (27, 15908), (35, 16019), (37, 16094), (43, 16232), (47, 16355), (48, 16358), (52, 16478), (59, 16703),

Gene: Ball\_20 Start: 16577, Stop: 17452, Start Num: 12

Candidate Starts for Ball\_20:

(4, 16514), (Start: 12 @16577 has 6 MA's), (26, 16697), (31, 16715), (33, 16721), (39, 16913), (40, 16919), (43, 17036), (47, 17138), (54, 17273), (60, 17444),

Gene: BellaJr\_24 Start: 19206, Stop: 20150, Start Num: 12

Candidate Starts for BellaJr\_24:

(1, 19107), (Start: 12 @19206 has 6 MA's), (20, 19308), (27, 19335), (28, 19338), (30, 19347), (38, 19530), (43, 19668), (47, 19809), (49, 19824), (50, 19830), (59, 20139),

Gene: BlackSpider\_22 Start: 18049, Stop: 19008, Start Num: 11

Candidate Starts for BlackSpider\_22:

(Start: 11 @18049 has 1 MA's), (16, 18142), (17, 18145), (18, 18148), (24, 18169), (39, 18391), (41, 18418), (43, 18514), (46, 18634), (47, 18652), (56, 18862), (59, 18997),

Gene: BrayBeast\_21 Start: 16427, Stop: 17380, Start Num: 12

Candidate Starts for BrayBeast\_21:

(3, 16355), (7, 16385), (Start: 9 @16421 has 5 MA's), (Start: 12 @16427 has 6 MA's), (18, 16523), (20, 16529), (28, 16559), (29, 16565), (36, 16721), (39, 16766), (43, 16889), (44, 16922), (47, 17039), (49, 17054), (59, 17369),

Gene: Cassini\_22 Start: 18289, Stop: 19245, Start Num: 12

Candidate Starts for Cassini\_22:

(1, 18190), (Start: 12 @18289 has 6 MA's), (20, 18391), (27, 18418), (28, 18421), (30, 18430), (39, 18628), (41, 18655), (43, 18751), (46, 18871), (47, 18889), (56, 19099), (59, 19234),

Gene: CocoCinnamon\_25 Start: 18021, Stop: 18956, Start Num: 12

Candidate Starts for CocoCinnamon\_25:

(Start: 12 @18021 has 6 MA's), (17, 18114), (24, 18138), (39, 18357), (43, 18477), (47, 18615), (48, 18618), (58, 18936),

Gene: Constance\_24 Start: 18878, Stop: 19768, Start Num: 13

Candidate Starts for Constance\_24:

(4, 18818), (7, 18836), (Start: 13 @18878 has 3 MA's), (20, 18974), (52, 19547),

Gene: GoodLuckBabe\_24 Start: 18113, Stop: 19042, Start Num: 9

Candidate Starts for GoodLuckBabe\_24:

(6, 18071), (8, 18080), (Start: 9 @18113 has 5 MA's), (14, 18170), (21, 18227), (23, 18236), (42, 18485), (43, 18575), (47, 18698), (53, 18809),

Gene: IsHungry\_24 Start: 18089, Stop: 19024, Start Num: 9

Candidate Starts for IsHungry\_24:

(6, 18050), (8, 18059), (Start: 9 @18089 has 5 MA's), (21, 18191), (23, 18200), (32, 18233), (47, 18677), (48, 18680),

Gene: JeanClaude\_21 Start: 16337, Stop: 17293, Start Num: 12

Candidate Starts for JeanClaude\_21:

(2, 16241), (3, 16262), (6, 16286), (Start: 12 @16337 has 6 MA's), (17, 16430), (18, 16433), (19, 16436), (28, 16469), (39, 16676), (43, 16799), (47, 16937), (52, 17042), (56, 17147), (59, 17282),

Gene: Merpity\_23 Start: 16139, Stop: 17095, Start Num: 12

Candidate Starts for Merpity\_23:

(10, 16133), (Start: 12 @16139 has 6 MA's), (15, 16217), (16, 16229), (17, 16232), (25, 16259), (27, 16268), (36, 16433), (39, 16478), (41, 16505), (43, 16601), (46, 16721), (47, 16739), (56, 16949), (57, 16958), (59, 17084),

Gene: MrSmee\_21 Start: 16139, Stop: 17095, Start Num: 12

Candidate Starts for MrSmee\_21:

(10, 16133), (Start: 12 @16139 has 6 MA's), (15, 16217), (16, 16229), (17, 16232), (25, 16259), (27, 16268), (39, 16478), (41, 16505), (43, 16601), (46, 16721), (47, 16739), (56, 16949), (59, 17084),

Gene: NidoQ\_24 Start: 18892, Stop: 19782, Start Num: 13

Candidate Starts for NidoQ\_24:

(7, 18850), (Start: 13 @18892 has 3 MA's), (20, 18988), (52, 19561),

Gene: PeggyLeg03\_24 Start: 18878, Stop: 19768, Start Num: 13

Candidate Starts for PeggyLeg03\_24:

(4, 18818), (7, 18836), (Start: 13 @18878 has 3 MA's), (20, 18974), (52, 19547),

Gene: Pigu\_21 Start: 16095, Stop: 17036, Start Num: 12

Candidate Starts for Pigu\_21:

(Start: 12 @16095 has 6 MA's), (17, 16188), (19, 16194), (22, 16206), (28, 16227), (35, 16338), (38, 16419), (43, 16554), (47, 16692), (51, 16725), (55, 16878), (59, 17025),

Gene: Rooter\_21 Start: 15971, Stop: 16915, Start Num: 12

Candidate Starts for Rooter\_21:

(5, 15920), (7, 15929), (Start: 9 @15965 has 5 MA's), (Start: 12 @15971 has 6 MA's), (20, 16073), (29, 16109), (34, 16145), (43, 16433), (45, 16514), (47, 16565), (48, 16568), (55, 16754), (59, 16904),

Gene: Ryan\_24 Start: 18293, Stop: 19222, Start Num: 9

Candidate Starts for Ryan\_24:

(6, 18251), (8, 18260), (Start: 9 @18293 has 5 MA's), (14, 18350), (21, 18407), (23, 18416), (42, 18665), (43, 18755), (47, 18878),

Gene: Sarge\_21 Start: 16338, Stop: 17294, Start Num: 12

Candidate Starts for Sarge\_21:

(7, 16296), (Start: 9 @16332 has 5 MA's), (Start: 12 @16338 has 6 MA's), (20, 16452), (34, 16524), (35, 16593), (43, 16812), (45, 16893), (47, 16944), (48, 16947), (55, 17133), (59, 17283),

Gene: Shoya\_20 Start: 15977, Stop: 16933, Start Num: 12

Candidate Starts for Shoya\_20:

(2, 15881), (3, 15902), (6, 15926), (Start: 12 @15977 has 6 MA's), (17, 16070), (18, 16073), (19, 16076), (28, 16109), (36, 16271), (39, 16316), (43, 16439), (47, 16577), (52, 16682), (56, 16787), (59,

16922),

Gene: Skitty\_21 Start: 16139, Stop: 17095, Start Num: 12

Candidate Starts for Skitty\_21:

(10, 16133), (Start: 12 @16139 has 6 MA's), (15, 16217), (16, 16229), (17, 16232), (25, 16259), (27, 16268), (39, 16478), (41, 16505), (43, 16601), (46, 16721), (47, 16739), (56, 16949), (59, 17084),

Gene: Yonex\_24 Start: 18293, Stop: 19222, Start Num: 9

Candidate Starts for Yonex\_24:

(6, 18251), (8, 18260), (Start: 9 @18293 has 5 MA's), (14, 18350), (21, 18407), (23, 18416), (42, 18665), (43, 18755), (47, 18878),

Gene: Zaheer\_24 Start: 18382, Stop: 19311, Start Num: 9

Candidate Starts for Zaheer\_24:

(6, 18340), (8, 18349), (Start: 9 @18382 has 5 MA's), (14, 18439), (21, 18496), (23, 18505), (42, 18754), (43, 18844), (47, 18967),