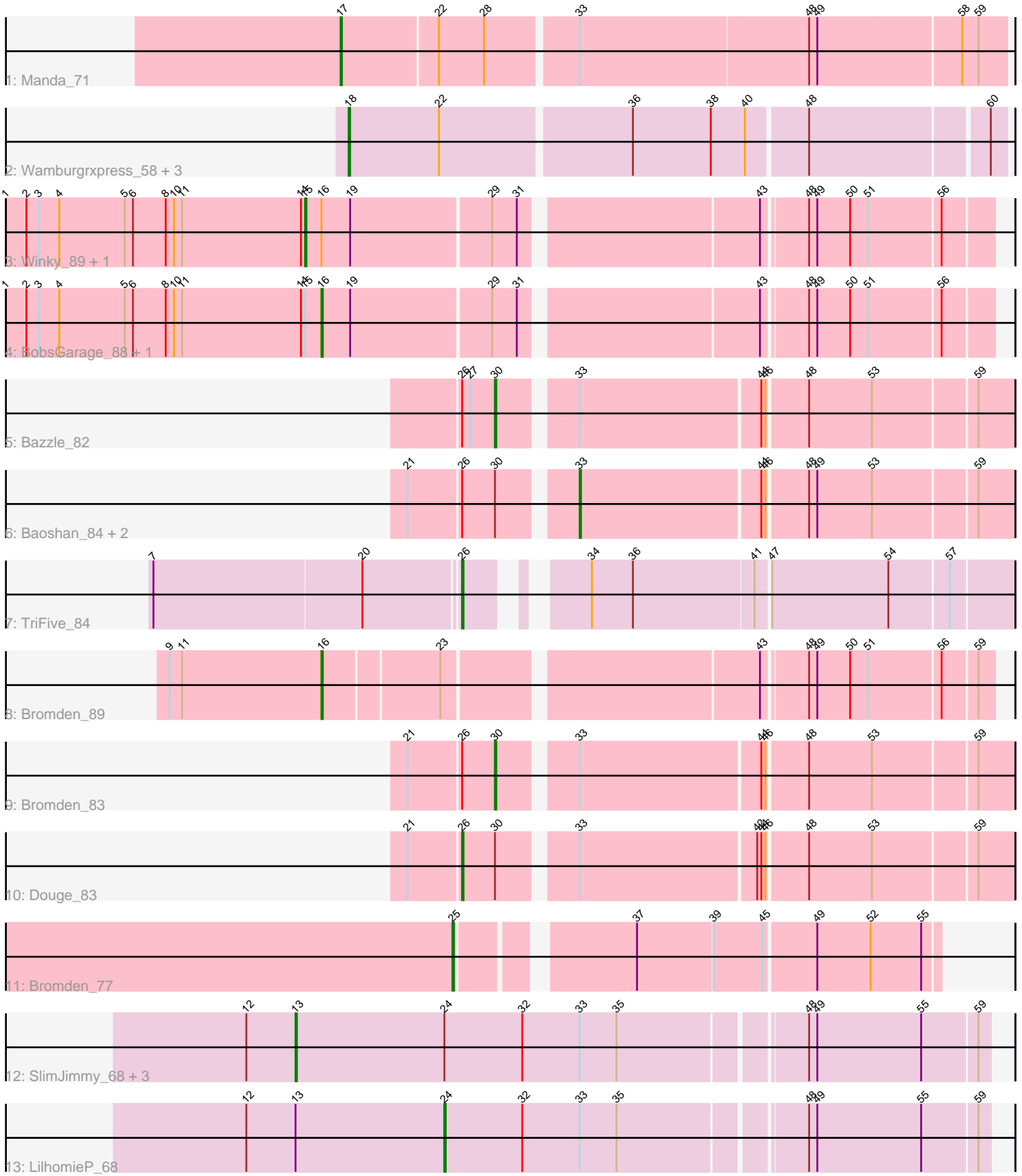


Pham 305295



Note: Tracks are now grouped by subcluster and scaled. Switching in subcluster is indicated by changes in track color. Track scale is now set by default to display the region 30 bp upstream of start 1 to 30 bp downstream of the last possible start. If this default region is judged to be packed too tightly with annotated starts, the track will be further scaled to only show that region of the ORF with annotated starts. This action will be indicated by adding "Zoomed" to the title. For starts, yellow indicates the location of called starts comprised solely of Glimmer/GeneMark auto-annotations, green indicates the location of called starts with at least 1 manual gene annotation.

Pham 305295 Report

This analysis was run 06/08/26 on database version 649.

Pham number 305295 has 23 members, 4 are drafts.

Phages represented in each track:

- Track 1 : Manda_71
- Track 2 : Wamburgxpress_58, OhShagHennessy_56, Calm_59, Zaria_59
- Track 3 : Winky_89, Sarshaun_90
- Track 4 : BobsGarage_88, Soap141_89
- Track 5 : Bazzle_82
- Track 6 : Baoshan_84, ZhongYanYuan_82, DHan_88
- Track 7 : TriFive_84
- Track 8 : Bromden_89
- Track 9 : Bromden_83
- Track 10 : Douge_83
- Track 11 : Bromden_77
- Track 12 : SlimJimmy_68, Glaske16_70, FreakyGoo_70, Skinny_71
- Track 13 : LilhomieP_68

Summary of Final Annotations (See graph section above for start numbers):

The start number called the most often in the published annotations is 13, it was called in 4 of the 19 non-draft genes in the pham.

Genes that call this "Most Annotated" start:

- FreakyGoo_70, Glaske16_70, Skinny_71, SlimJimmy_68,

Genes that have the "Most Annotated" start but do not call it:

- LilhomieP_68,

Genes that do not have the "Most Annotated" start:

- Baoshan_84, Bazzle_82, BobsGarage_88, Bromden_77, Bromden_83, Bromden_89, Calm_59, DHan_88, Douge_83, Manda_71, OhShagHennessy_56, Sarshaun_90, Soap141_89, TriFive_84, Wamburgxpress_58, Winky_89, Zaria_59, ZhongYanYuan_82,

Summary by start number:

Start 13:

- Found in 5 of 23 (21.7%) of genes in pham
- Manual Annotations of this start: 4 of 19
- Called 80.0% of time when present
- Phage (with cluster) where this start called: FreakyGoo_70 (M1), Glaske16_70 (M1), Skinny_71 (M1), SlimJimmy_68 (M1),

Start 15:

- Found in 4 of 23 (17.4%) of genes in pham
- Manual Annotations of this start: 1 of 19
- Called 50.0% of time when present
- Phage (with cluster) where this start called: Sarshaun_90 (L2), Winky_89 (L2),

Start 16:

- Found in 5 of 23 (21.7%) of genes in pham
- Manual Annotations of this start: 2 of 19
- Called 60.0% of time when present
- Phage (with cluster) where this start called: BobsGarage_88 (L2), Bromden_89 (L4), Soap141_89 (L2),

Start 17:

- Found in 1 of 23 (4.3%) of genes in pham
- Manual Annotations of this start: 1 of 19
- Called 100.0% of time when present
- Phage (with cluster) where this start called: Manda_71 (E),

Start 18:

- Found in 4 of 23 (17.4%) of genes in pham
- Manual Annotations of this start: 4 of 19
- Called 100.0% of time when present
- Phage (with cluster) where this start called: Calm_59 (L1), OhShagHennessy_56 (L1), Wamburgrxpress_58 (L1), Zaria_59 (L1),

Start 24:

- Found in 5 of 23 (21.7%) of genes in pham
- Manual Annotations of this start: 1 of 19
- Called 20.0% of time when present
- Phage (with cluster) where this start called: LilhomieP_68 (M1),

Start 25:

- Found in 1 of 23 (4.3%) of genes in pham
- Manual Annotations of this start: 1 of 19
- Called 100.0% of time when present
- Phage (with cluster) where this start called: Bromden_77 (L4),

Start 26:

- Found in 7 of 23 (30.4%) of genes in pham
- Manual Annotations of this start: 2 of 19
- Called 28.6% of time when present
- Phage (with cluster) where this start called: Douge_83 (L4), TriFive_84 (L3),

Start 30:

- Found in 6 of 23 (26.1%) of genes in pham
- Manual Annotations of this start: 2 of 19

- Called 33.3% of time when present
- Phage (with cluster) where this start called: Bazzle_82 (L2), Bromden_83 (L4),

Start 33:

- Found in 12 of 23 (52.2%) of genes in pham
- Manual Annotations of this start: 1 of 19
- Called 25.0% of time when present
- Phage (with cluster) where this start called: Baoshan_84 (L2), DHan_88 (L2), ZhongYanYuan_82 (L2),

Summary by clusters:

There are 6 clusters represented in this pham: E, L4, L2, L3, L1, M1,

Info for manual annotations of cluster E:

- Start number 17 was manually annotated 1 time for cluster E.

Info for manual annotations of cluster L1:

- Start number 18 was manually annotated 4 times for cluster L1.

Info for manual annotations of cluster L2:

- Start number 15 was manually annotated 1 time for cluster L2.
- Start number 16 was manually annotated 1 time for cluster L2.
- Start number 30 was manually annotated 1 time for cluster L2.
- Start number 33 was manually annotated 1 time for cluster L2.

Info for manual annotations of cluster L3:

- Start number 26 was manually annotated 1 time for cluster L3.

Info for manual annotations of cluster L4:

- Start number 16 was manually annotated 1 time for cluster L4.
- Start number 25 was manually annotated 1 time for cluster L4.
- Start number 26 was manually annotated 1 time for cluster L4.
- Start number 30 was manually annotated 1 time for cluster L4.

Info for manual annotations of cluster M1:

- Start number 13 was manually annotated 4 times for cluster M1.
- Start number 24 was manually annotated 1 time for cluster M1.

Gene Information:

Gene: Baoshan_84 Start: 55413, Stop: 55715, Start Num: 33

Candidate Starts for Baoshan_84:

(21, 55305), (Start: 26 @55341 has 2 MA's), (Start: 30 @55365 has 2 MA's), (Start: 33 @55413 has 1 MA's), (44, 55542), (46, 55545), (48, 55572), (49, 55578), (53, 55617), (59, 55689),

Gene: Bazzle_82 Start: 55265, Stop: 55615, Start Num: 30

Candidate Starts for Bazzle_82:

(Start: 26 @55241 has 2 MA's), (27, 55247), (Start: 30 @55265 has 2 MA's), (Start: 33 @55313 has 1 MA's), (44, 55442), (46, 55445), (48, 55472), (53, 55517), (59, 55589),

Gene: BobsGarage_88 Start: 57587, Stop: 58045, Start Num: 16

Candidate Starts for BobsGarage_88:

(1, 57356), (2, 57371), (3, 57380), (4, 57395), (5, 57443), (6, 57449), (8, 57473), (10, 57479), (11, 57485), (14, 57572), (Start: 15 @57575 has 1 MA's), (Start: 16 @57587 has 2 MA's), (19, 57608), (29, 57707), (31, 57725), (43, 57887), (48, 57917), (49, 57923), (50, 57947), (51, 57959), (56, 58010),

Gene: Bromden_89 Start: 57826, Stop: 58278, Start Num: 16

Candidate Starts for Bromden_89:

(9, 57715), (11, 57724), (Start: 16 @57826 has 2 MA's), (23, 57907), (43, 58120), (48, 58150), (49, 58156), (50, 58180), (51, 58192), (56, 58243), (59, 58267),

Gene: Bromden_83 Start: 54891, Stop: 55241, Start Num: 30

Candidate Starts for Bromden_83:

(21, 54831), (Start: 26 @54867 has 2 MA's), (Start: 30 @54891 has 2 MA's), (Start: 33 @54939 has 1 MA's), (44, 55068), (46, 55071), (48, 55098), (53, 55143), (59, 55215),

Gene: Bromden_77 Start: 52678, Stop: 53001, Start Num: 25

Candidate Starts for Bromden_77:

(Start: 25 @52678 has 1 MA's), (37, 52789), (39, 52843), (45, 52879), (49, 52915), (52, 52954), (55, 52990),

Gene: Calm_59 Start: 41416, Stop: 41874, Start Num: 18

Candidate Starts for Calm_59:

(Start: 18 @41416 has 4 MA's), (22, 41482), (36, 41617), (38, 41674), (40, 41698), (48, 41740), (60, 41863),

Gene: DHan_88 Start: 55476, Stop: 55778, Start Num: 33

Candidate Starts for DHan_88:

(21, 55368), (Start: 26 @55404 has 2 MA's), (Start: 30 @55428 has 2 MA's), (Start: 33 @55476 has 1 MA's), (44, 55605), (46, 55608), (48, 55635), (49, 55641), (53, 55680), (59, 55752),

Gene: Douge_83 Start: 53819, Stop: 54193, Start Num: 26

Candidate Starts for Douge_83:

(21, 53783), (Start: 26 @53819 has 2 MA's), (Start: 30 @53843 has 2 MA's), (Start: 33 @53891 has 1 MA's), (42, 54017), (44, 54020), (46, 54023), (48, 54050), (53, 54095), (59, 54167),

Gene: FreakyGoo_70 Start: 44854, Stop: 45342, Start Num: 13

Candidate Starts for FreakyGoo_70:

(12, 44818), (Start: 13 @44854 has 4 MA's), (Start: 24 @44962 has 1 MA's), (32, 45019), (Start: 33 @45061 has 1 MA's), (35, 45088), (48, 45214), (49, 45220), (55, 45295), (59, 45334),

Gene: Glaske16_70 Start: 44853, Stop: 45341, Start Num: 13

Candidate Starts for Glaske16_70:

(12, 44817), (Start: 13 @44853 has 4 MA's), (Start: 24 @44961 has 1 MA's), (32, 45018), (Start: 33 @45060 has 1 MA's), (35, 45087), (48, 45213), (49, 45219), (55, 45294), (59, 45333),

Gene: LilhomieP_68 Start: 44966, Stop: 45346, Start Num: 24

Candidate Starts for LilhomieP_68:

(12, 44822), (Start: 13 @44858 has 4 MA's), (Start: 24 @44966 has 1 MA's), (32, 45023), (Start: 33 @45065 has 1 MA's), (35, 45092), (48, 45218), (49, 45224), (55, 45299), (59, 45338),

Gene: Manda_71 Start: 47070, Stop: 47540, Start Num: 17

Candidate Starts for Manda_71:

(Start: 17 @47070 has 1 MA's), (22, 47139), (28, 47172), (Start: 33 @47235 has 1 MA's), (48, 47400), (49, 47406), (58, 47508), (59, 47520),

Gene: OhShagHennessy_56 Start: 40304, Stop: 40762, Start Num: 18

Candidate Starts for OhShagHennessy_56:

(Start: 18 @40304 has 4 MA's), (22, 40370), (36, 40505), (38, 40562), (40, 40586), (48, 40628), (60, 40751),

Gene: Sarshaun_90 Start: 57970, Stop: 58440, Start Num: 15

Candidate Starts for Sarshaun_90:

(1, 57751), (2, 57766), (3, 57775), (4, 57790), (5, 57838), (6, 57844), (8, 57868), (10, 57874), (11, 57880), (14, 57967), (Start: 15 @57970 has 1 MA's), (Start: 16 @57982 has 2 MA's), (19, 58003), (29, 58102), (31, 58120), (43, 58282), (48, 58312), (49, 58318), (50, 58342), (51, 58354), (56, 58405),

Gene: Skinny_71 Start: 45287, Stop: 45775, Start Num: 13

Candidate Starts for Skinny_71:

(12, 45251), (Start: 13 @45287 has 4 MA's), (Start: 24 @45395 has 1 MA's), (32, 45452), (Start: 33 @45494 has 1 MA's), (35, 45521), (48, 45647), (49, 45653), (55, 45728), (59, 45767),

Gene: SlimJimmy_68 Start: 44842, Stop: 45330, Start Num: 13

Candidate Starts for SlimJimmy_68:

(12, 44806), (Start: 13 @44842 has 4 MA's), (Start: 24 @44950 has 1 MA's), (32, 45007), (Start: 33 @45049 has 1 MA's), (35, 45076), (48, 45202), (49, 45208), (55, 45283), (59, 45322),

Gene: Soap141_89 Start: 57982, Stop: 58440, Start Num: 16

Candidate Starts for Soap141_89:

(1, 57751), (2, 57766), (3, 57775), (4, 57790), (5, 57838), (6, 57844), (8, 57868), (10, 57874), (11, 57880), (14, 57967), (Start: 15 @57970 has 1 MA's), (Start: 16 @57982 has 2 MA's), (19, 58003), (29, 58102), (31, 58120), (43, 58282), (48, 58312), (49, 58318), (50, 58342), (51, 58354), (56, 58405),

Gene: TriFive_84 Start: 55170, Stop: 55526, Start Num: 26

Candidate Starts for TriFive_84:

(7, 54954), (20, 55104), (Start: 26 @55170 has 2 MA's), (34, 55230), (36, 55260), (41, 55347), (47, 55356), (54, 55440), (57, 55482),

Gene: Wamburgrexpress_58 Start: 41304, Stop: 41762, Start Num: 18

Candidate Starts for Wamburgrexpress_58:

(Start: 18 @41304 has 4 MA's), (22, 41370), (36, 41505), (38, 41562), (40, 41586), (48, 41628), (60, 41751),

Gene: Winky_89 Start: 57575, Stop: 58045, Start Num: 15

Candidate Starts for Winky_89:

(1, 57356), (2, 57371), (3, 57380), (4, 57395), (5, 57443), (6, 57449), (8, 57473), (10, 57479), (11, 57485), (14, 57572), (Start: 15 @57575 has 1 MA's), (Start: 16 @57587 has 2 MA's), (19, 57608), (29, 57707), (31, 57725), (43, 57887), (48, 57917), (49, 57923), (50, 57947), (51, 57959), (56, 58010),

Gene: Zaria_59 Start: 41416, Stop: 41874, Start Num: 18

Candidate Starts for Zaria_59:

(Start: 18 @41416 has 4 MA's), (22, 41482), (36, 41617), (38, 41674), (40, 41698), (48, 41740), (60, 41863),

Gene: ZhongYanYuan_82 Start: 54996, Stop: 55298, Start Num: 33

Candidate Starts for ZhongYanYuan_82:

(21, 54888), (Start: 26 @54924 has 2 MA's), (Start: 30 @54948 has 2 MA's), (Start: 33 @54996 has 1 MA's), (44, 55125), (46, 55128), (48, 55155), (49, 55161), (53, 55200), (59, 55272),