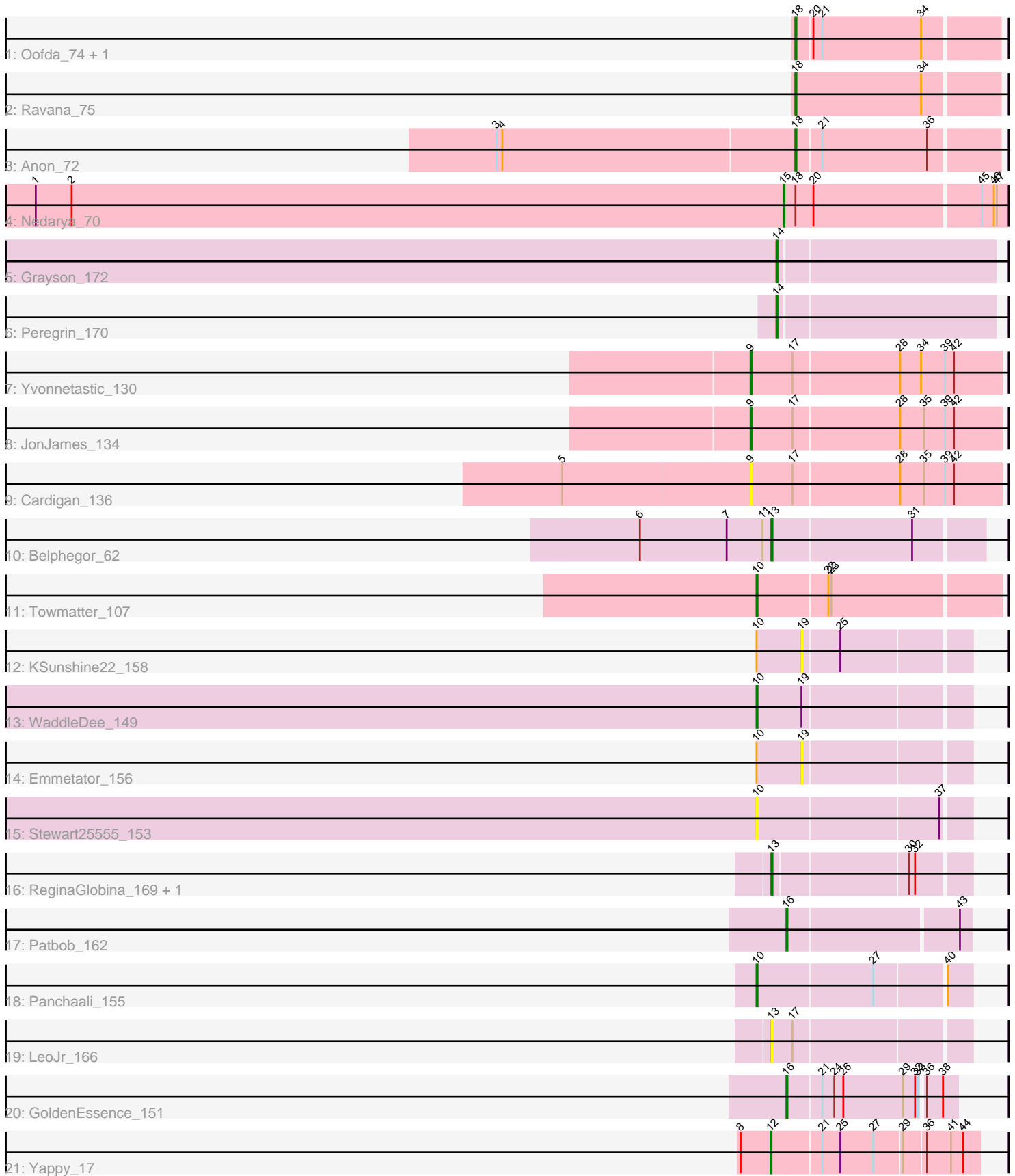


Pham 305299



Note: Tracks are now grouped by subcluster and scaled. Switching in subcluster is indicated by changes in track color. Track scale is now set by default to display the region 30 bp upstream of start 1 to 30 bp downstream of the last possible start. If this default region is judged to be packed too tightly with annotated starts, the track will be further scaled to only show that region of the ORF with annotated starts. This action will be indicated by adding "Zoomed" to the title. For starts, yellow indicates the location of called starts comprised solely of Glimmer/GeneMark auto-annotations, green indicates the location of called starts with at least 1 manual gene annotation.

## Pham 305299 Report

This analysis was run 06/08/26 on database version 649.

Pham number 305299 has 23 members, 6 are drafts.

Phages represented in each track:

- Track 1 : Oofda\_74, Warrior24\_75
- Track 2 : Ravana\_75
- Track 3 : Anon\_72
- Track 4 : Nedarya\_70
- Track 5 : Grayson\_172
- Track 6 : Peregrin\_170
- Track 7 : Yvonnetastic\_130
- Track 8 : JonJames\_134
- Track 9 : Cardigan\_136
- Track 10 : Belphegor\_62
- Track 11 : Towmatter\_107
- Track 12 : KSunshine22\_158
- Track 13 : WaddleDee\_149
- Track 14 : Emmetator\_156
- Track 15 : Stewart25555\_153
- Track 16 : ReginaGlobina\_169, Atuin\_156
- Track 17 : Patbob\_162
- Track 18 : Panchaali\_155
- Track 19 : LeoJr\_166
- Track 20 : GoldenEssence\_151
- Track 21 : Yappy\_17

### ***Summary of Final Annotations (See graph section above for start numbers):***

The start number called the most often in the published annotations is 18, it was called in 4 of the 17 non-draft genes in the pham.

Genes that call this "Most Annotated" start:

- Anon\_72, Oofda\_74, Ravana\_75, Warrior24\_75,

Genes that have the "Most Annotated" start but do not call it:

- Nedarya\_70,

Genes that do not have the "Most Annotated" start:

• Atuin\_156, Belphegor\_62, Cardigan\_136, Emmetator\_156, GoldenEssence\_151, Grayson\_172, JonJames\_134, KSunshine22\_158, LeoJr\_166, Panchaali\_155, Patbob\_162, Peregrin\_170, ReginaGlobina\_169, Stewart25555\_153, Towmatter\_107, WaddleDee\_149, Yappy\_17, Yvonnetastic\_130,

### Summary by start number:

#### Start 9:

- Found in 3 of 23 ( 13.0% ) of genes in pham
- Manual Annotations of this start: 2 of 17
- Called 100.0% of time when present
- Phage (with cluster) where this start called: Cardigan\_136 (DD), JonJames\_134 (DD), Yvonnetastic\_130 (DD),

#### Start 10:

- Found in 6 of 23 ( 26.1% ) of genes in pham
- Manual Annotations of this start: 3 of 17
- Called 66.7% of time when present
- Phage (with cluster) where this start called: Panchaali\_155 (FC), Stewart25555\_153 (FC), Towmatter\_107 (DL), WaddleDee\_149 (FC),

#### Start 12:

- Found in 1 of 23 ( 4.3% ) of genes in pham
- Manual Annotations of this start: 1 of 17
- Called 100.0% of time when present
- Phage (with cluster) where this start called: Yappy\_17 (singleton),

#### Start 13:

- Found in 4 of 23 ( 17.4% ) of genes in pham
- Manual Annotations of this start: 2 of 17
- Called 100.0% of time when present
- Phage (with cluster) where this start called: Atuin\_156 (FC), Belphegor\_62 (DE2), LeoJr\_166 (FC), ReginaGlobina\_169 (FC),

#### Start 14:

- Found in 2 of 23 ( 8.7% ) of genes in pham
- Manual Annotations of this start: 2 of 17
- Called 100.0% of time when present
- Phage (with cluster) where this start called: Grayson\_172 (CB), Peregrin\_170 (CB),

#### Start 15:

- Found in 1 of 23 ( 4.3% ) of genes in pham
- Manual Annotations of this start: 1 of 17
- Called 100.0% of time when present
- Phage (with cluster) where this start called: Nedarya\_70 (A15),

#### Start 16:

- Found in 2 of 23 ( 8.7% ) of genes in pham
- Manual Annotations of this start: 2 of 17
- Called 100.0% of time when present
- Phage (with cluster) where this start called: GoldenEssence\_151 (FC), Patbob\_162 (FC),

Start 18:

- Found in 5 of 23 ( 21.7% ) of genes in pham
- Manual Annotations of this start: 4 of 17
- Called 80.0% of time when present
- Phage (with cluster) where this start called: Anon\_72 (A15), Oofda\_74 (A15), Ravana\_75 (A15), Warrior24\_75 (A15),

Start 19:

- Found in 3 of 23 ( 13.0% ) of genes in pham
- No Manual Annotations of this start.
- Called 66.7% of time when present
- Phage (with cluster) where this start called: Emmetator\_156 (FC), KSunshine22\_158 (FC),

**Summary by clusters:**

There are 7 clusters represented in this pham: A15, DL, CB, DE2, singleton, FC, DD,

Info for manual annotations of cluster A15:

- Start number 15 was manually annotated 1 time for cluster A15.
- Start number 18 was manually annotated 4 times for cluster A15.

Info for manual annotations of cluster CB:

- Start number 14 was manually annotated 2 times for cluster CB.

Info for manual annotations of cluster DD:

- Start number 9 was manually annotated 2 times for cluster DD.

Info for manual annotations of cluster DE2:

- Start number 13 was manually annotated 1 time for cluster DE2.

Info for manual annotations of cluster DL:

- Start number 10 was manually annotated 1 time for cluster DL.

Info for manual annotations of cluster FC:

- Start number 10 was manually annotated 2 times for cluster FC.
- Start number 13 was manually annotated 1 time for cluster FC.
- Start number 16 was manually annotated 2 times for cluster FC.

**Gene Information:**

Gene: Anon\_72 Start: 40724, Stop: 40530, Start Num: 18

Candidate Starts for Anon\_72:

(3, 41021), (4, 41015), (Start: 18 @40724 has 4 MA's), (21, 40700), (36, 40595),

Gene: Atuin\_156 Start: 110180, Stop: 110365, Start Num: 13

Candidate Starts for Atuin\_156:

(Start: 13 @110180 has 2 MA's), (30, 110309), (32, 110315),

Gene: Belphegor\_62 Start: 49602, Stop: 49805, Start Num: 13

Candidate Starts for Belphegor\_62:

(6, 49470), (7, 49557), (11, 49593), (Start: 13 @49602 has 2 MA's), (31, 49740),

Gene: Cardigan\_136 Start: 76837, Stop: 77085, Start Num: 9

Candidate Starts for Cardigan\_136:

(5, 76651), (Start: 9 @76837 has 2 MA's), (17, 76879), (28, 76984), (35, 77008), (39, 77029), (42, 77038),

Gene: Emmetator\_156 Start: 107433, Stop: 107591, Start Num: 19

Candidate Starts for Emmetator\_156:

(Start: 10 @107388 has 3 MA's), (19, 107433),

Gene: GoldenEssence\_151 Start: 104838, Stop: 104999, Start Num: 16

Candidate Starts for GoldenEssence\_151:

(Start: 16 @104838 has 2 MA's), (21, 104871), (24, 104883), (26, 104892), (29, 104952), (32, 104964), (33, 104967), (36, 104970), (38, 104985),

Gene: Grayson\_172 Start: 92452, Stop: 92664, Start Num: 14

Candidate Starts for Grayson\_172:

(Start: 14 @92452 has 2 MA's),

Gene: JonJames\_134 Start: 77470, Stop: 77718, Start Num: 9

Candidate Starts for JonJames\_134:

(Start: 9 @77470 has 2 MA's), (17, 77512), (28, 77617), (35, 77641), (39, 77662), (42, 77671),

Gene: KSunshine22\_158 Start: 108183, Stop: 108341, Start Num: 19

Candidate Starts for KSunshine22\_158:

(Start: 10 @108138 has 3 MA's), (19, 108183), (25, 108219),

Gene: LeoJr\_166 Start: 110788, Stop: 110976, Start Num: 13

Candidate Starts for LeoJr\_166:

(Start: 13 @110788 has 2 MA's), (17, 110809),

Gene: Nedarya\_70 Start: 40759, Stop: 40541, Start Num: 15

Candidate Starts for Nedarya\_70:

(1, 41509), (2, 41473), (Start: 15 @40759 has 1 MA's), (Start: 18 @40747 has 4 MA's), (20, 40729), (45, 40567), (46, 40555), (47, 40552),

Gene: Oofda\_74 Start: 40724, Stop: 40530, Start Num: 18

Candidate Starts for Oofda\_74:

(Start: 18 @40724 has 4 MA's), (20, 40709), (21, 40700), (34, 40601),

Gene: Panchaali\_155 Start: 107904, Stop: 108107, Start Num: 10

Candidate Starts for Panchaali\_155:

(Start: 10 @107904 has 3 MA's), (27, 108018), (40, 108084),

Gene: Patbob\_162 Start: 111552, Stop: 111728, Start Num: 16

Candidate Starts for Patbob\_162:

(Start: 16 @111552 has 2 MA's), (43, 111717),

Gene: Peregrin\_170 Start: 91883, Stop: 92095, Start Num: 14

Candidate Starts for Peregrin\_170:

(Start: 14 @91883 has 2 MA's),

Gene: Ravana\_75 Start: 41923, Stop: 41726, Start Num: 18  
Candidate Starts for Ravana\_75:  
(Start: 18 @41923 has 4 MA's), (34, 41797),

Gene: ReginaGlobina\_169 Start: 112062, Stop: 112247, Start Num: 13  
Candidate Starts for ReginaGlobina\_169:  
(Start: 13 @112062 has 2 MA's), (30, 112191), (32, 112197),

Gene: Stewart25555\_153 Start: 108142, Stop: 108345, Start Num: 10  
Candidate Starts for Stewart25555\_153:  
(Start: 10 @108142 has 3 MA's), (37, 108319),

Gene: Towmatter\_107 Start: 68561, Stop: 68797, Start Num: 10  
Candidate Starts for Towmatter\_107:  
(Start: 10 @68561 has 3 MA's), (22, 68630), (23, 68633),

Gene: WaddleDee\_149 Start: 106261, Stop: 106464, Start Num: 10  
Candidate Starts for WaddleDee\_149:  
(Start: 10 @106261 has 3 MA's), (19, 106306),

Gene: Warrior24\_75 Start: 41179, Stop: 40985, Start Num: 18  
Candidate Starts for Warrior24\_75:  
(Start: 18 @41179 has 4 MA's), (20, 41164), (21, 41155), (34, 41056),

Gene: Yappy\_17 Start: 5650, Stop: 5847, Start Num: 12  
Candidate Starts for Yappy\_17:  
(8, 5620), (Start: 12 @5650 has 1 MA's), (21, 5698), (25, 5716), (27, 5749), (29, 5776), (36, 5797), (41, 5821), (44, 5833),

Gene: Yvonnetastic\_130 Start: 73750, Stop: 73998, Start Num: 9  
Candidate Starts for Yvonnetastic\_130:  
(Start: 9 @73750 has 2 MA's), (17, 73792), (28, 73897), (34, 73918), (39, 73942), (42, 73951),