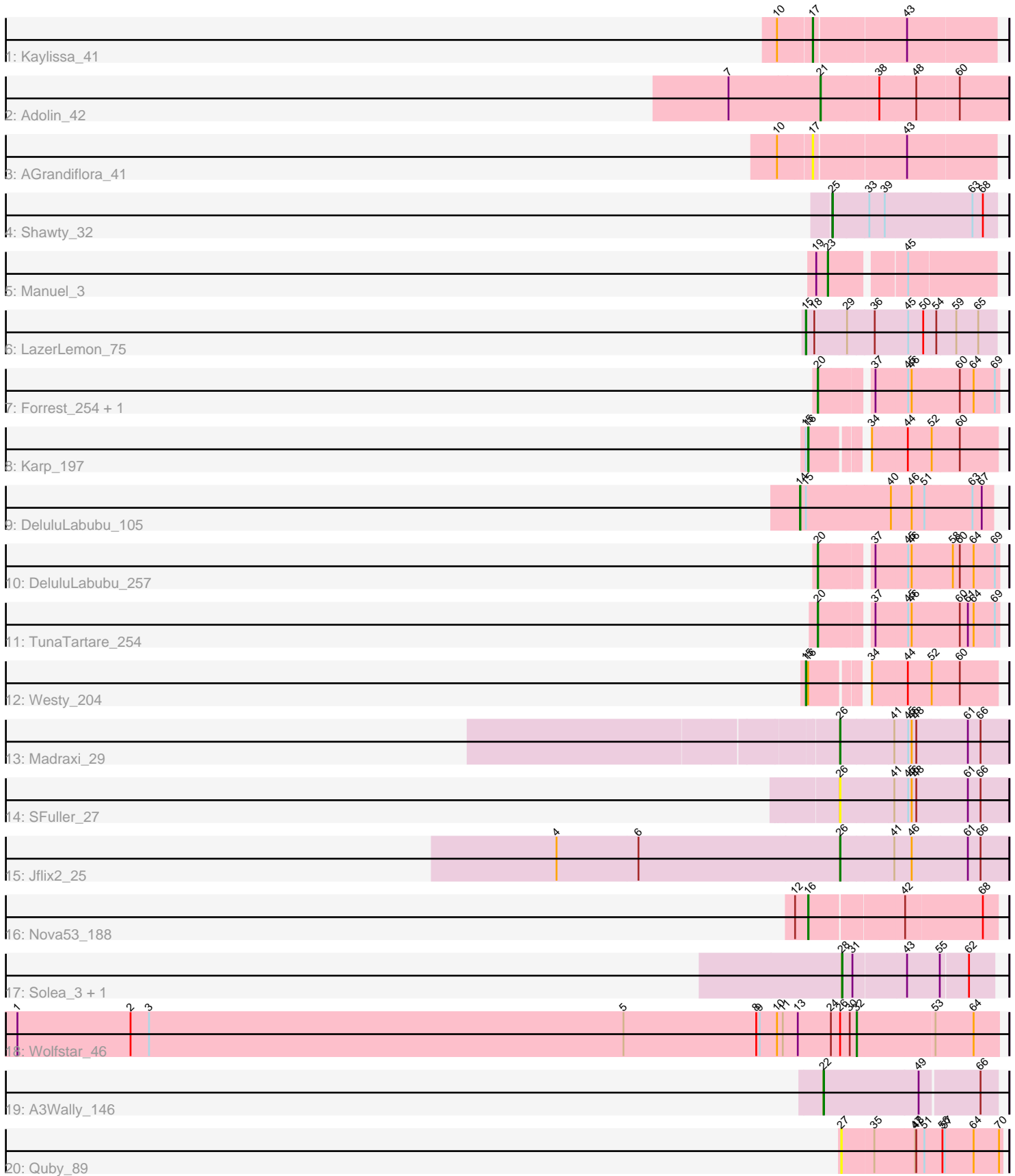


Pham 305310



Note: Tracks are now grouped by subcluster and scaled. Switching in subcluster is indicated by changes in track color. Track scale is now set by default to display the region 30 bp upstream of start 1 to 30 bp downstream of the last possible start. If this default region is judged to be packed too tightly with annotated starts, the track will be further scaled to only show that region of the ORF with annotated starts. This action will be indicated by adding "Zoomed" to the title. For starts, yellow indicates the location of called starts comprised solely of Glimmer/GeneMark auto-annotations, green indicates the location of called starts with at least 1 manual gene annotation.

## Pham 305310 Report

This analysis was run 06/08/26 on database version 649.

Pham number 305310 has 22 members, 4 are drafts.

Phages represented in each track:

- Track 1 : Kaylissa\_41
- Track 2 : Adolin\_42
- Track 3 : AGrandiflora\_41
- Track 4 : Shawty\_32
- Track 5 : Manuel\_3
- Track 6 : LazerLemon\_75
- Track 7 : Forrest\_254, Jada\_255
- Track 8 : Karp\_197
- Track 9 : DeluluLabubu\_105
- Track 10 : DeluluLabubu\_257
- Track 11 : TunaTartare\_254
- Track 12 : Westy\_204
- Track 13 : Madraxi\_29
- Track 14 : SFuller\_27
- Track 15 : Jflix2\_25
- Track 16 : Nova53\_188
- Track 17 : Solea\_3, Milomuff\_3
- Track 18 : Wolfstar\_46
- Track 19 : A3Wally\_146
- Track 20 : Quby\_89

### ***Summary of Final Annotations (See graph section above for start numbers):***

The start number called the most often in the published annotations is 20, it was called in 4 of the 18 non-draft genes in the pham.

Genes that call this "Most Annotated" start:

- DeluluLabubu\_257, Forrest\_254, Jada\_255, TunaTartare\_254,

Genes that have the "Most Annotated" start but do not call it:

- 

Genes that do not have the "Most Annotated" start:

• A3Wally\_146, AGrandiflora\_41, Adolin\_42, DeluluLabubu\_105, Jflix2\_25, Karp\_197, Kaylissa\_41, LazerLemon\_75, Madraxi\_29, Manuel\_3, Milomuff\_3, Nova53\_188, Quby\_89, SFuller\_27, Shawty\_32, Solea\_3, Westy\_204, Wolfstar\_46,

### Summary by start number:

#### Start 14:

- Found in 1 of 22 ( 4.5% ) of genes in pham
- Manual Annotations of this start: 1 of 18
- Called 100.0% of time when present
- Phage (with cluster) where this start called: DeluluLabubu\_105 (BK1),

#### Start 15:

- Found in 4 of 22 ( 18.2% ) of genes in pham
- Manual Annotations of this start: 2 of 18
- Called 50.0% of time when present
- Phage (with cluster) where this start called: LazerLemon\_75 (BH), Westy\_204 (BK1),

#### Start 16:

- Found in 3 of 22 ( 13.6% ) of genes in pham
- Manual Annotations of this start: 2 of 18
- Called 66.7% of time when present
- Phage (with cluster) where this start called: Karp\_197 (BK1), Nova53\_188 (CG),

#### Start 17:

- Found in 2 of 22 ( 9.1% ) of genes in pham
- Manual Annotations of this start: 1 of 18
- Called 100.0% of time when present
- Phage (with cluster) where this start called: AGrandiflora\_41 (AZ1), Kaylissa\_41 (AZ1),

#### Start 20:

- Found in 4 of 22 ( 18.2% ) of genes in pham
- Manual Annotations of this start: 4 of 18
- Called 100.0% of time when present
- Phage (with cluster) where this start called: DeluluLabubu\_257 (BK1), Forrest\_254 (BK1), Jada\_255 (BK1), TunaTartare\_254 (BK1),

#### Start 21:

- Found in 1 of 22 ( 4.5% ) of genes in pham
- Manual Annotations of this start: 1 of 18
- Called 100.0% of time when present
- Phage (with cluster) where this start called: Adolin\_42 (AZ1),

#### Start 22:

- Found in 1 of 22 ( 4.5% ) of genes in pham
- Manual Annotations of this start: 1 of 18
- Called 100.0% of time when present
- Phage (with cluster) where this start called: A3Wally\_146 (GD1),

#### Start 23:

- Found in 1 of 22 ( 4.5% ) of genes in pham

- Manual Annotations of this start: 1 of 18
- Called 100.0% of time when present
- Phage (with cluster) where this start called: Manuel\_3 (BF),

Start 25:

- Found in 1 of 22 ( 4.5% ) of genes in pham
- Manual Annotations of this start: 1 of 18
- Called 100.0% of time when present
- Phage (with cluster) where this start called: Shawty\_32 (BB1),

Start 26:

- Found in 4 of 22 ( 18.2% ) of genes in pham
- Manual Annotations of this start: 2 of 18
- Called 75.0% of time when present
- Phage (with cluster) where this start called: Jflix2\_25 (CF), Madraxi\_29 (CF), SFuller\_27 (CF),

Start 27:

- Found in 1 of 22 ( 4.5% ) of genes in pham
- No Manual Annotations of this start.
- Called 100.0% of time when present
- Phage (with cluster) where this start called: Quby\_89 (L4),

Start 28:

- Found in 2 of 22 ( 9.1% ) of genes in pham
- Manual Annotations of this start: 1 of 18
- Called 100.0% of time when present
- Phage (with cluster) where this start called: Milomuff\_3 (EB), Solea\_3 (EB),

Start 32:

- Found in 1 of 22 ( 4.5% ) of genes in pham
- Manual Annotations of this start: 1 of 18
- Called 100.0% of time when present
- Phage (with cluster) where this start called: Wolfstar\_46 (ED),

### **Summary by clusters:**

There are 11 clusters represented in this pham: GD1, BF, BB1, ED, CG, CF, EB, L4, BK1, AZ1, BH,

Info for manual annotations of cluster AZ1:

- Start number 17 was manually annotated 1 time for cluster AZ1.
- Start number 21 was manually annotated 1 time for cluster AZ1.

Info for manual annotations of cluster BB1:

- Start number 25 was manually annotated 1 time for cluster BB1.

Info for manual annotations of cluster BF:

- Start number 23 was manually annotated 1 time for cluster BF.

Info for manual annotations of cluster BH:

- Start number 15 was manually annotated 1 time for cluster BH.

Info for manual annotations of cluster BK1:

- Start number 14 was manually annotated 1 time for cluster BK1.
- Start number 15 was manually annotated 1 time for cluster BK1.
- Start number 16 was manually annotated 1 time for cluster BK1.
- Start number 20 was manually annotated 4 times for cluster BK1.

Info for manual annotations of cluster CF:

- Start number 26 was manually annotated 2 times for cluster CF.

Info for manual annotations of cluster CG:

- Start number 16 was manually annotated 1 time for cluster CG.

Info for manual annotations of cluster EB:

- Start number 28 was manually annotated 1 time for cluster EB.

Info for manual annotations of cluster ED:

- Start number 32 was manually annotated 1 time for cluster ED.

Info for manual annotations of cluster GD1:

- Start number 22 was manually annotated 1 time for cluster GD1.

### ***Gene Information:***

Gene: A3Wally\_146 Start: 90094, Stop: 90525, Start Num: 22

Candidate Starts for A3Wally\_146:

(Start: 22 @90094 has 1 MA's), (49, 90337), (66, 90481),

Gene: AGrandiflora\_41 Start: 29625, Stop: 30068, Start Num: 17

Candidate Starts for AGrandiflora\_41:

(10, 29544), (Start: 17 @29625 has 1 MA's), (43, 29847),

Gene: Adolin\_42 Start: 29874, Stop: 30347, Start Num: 21

Candidate Starts for Adolin\_42:

(7, 29637), (Start: 21 @29874 has 1 MA's), (38, 30018), (48, 30111), (60, 30219),

Gene: DeluluLabubu\_105 Start: 68261, Stop: 68743, Start Num: 14

Candidate Starts for DeluluLabubu\_105:

(Start: 14 @68261 has 1 MA's), (Start: 15 @68276 has 2 MA's), (40, 68492), (46, 68537), (51, 68570), (63, 68690), (67, 68714),

Gene: DeluluLabubu\_257 Start: 121131, Stop: 121556, Start Num: 20

Candidate Starts for DeluluLabubu\_257:

(Start: 20 @121131 has 4 MA's), (37, 121248), (45, 121329), (46, 121338), (58, 121437), (60, 121455), (64, 121491), (69, 121545),

Gene: Forrest\_254 Start: 120939, Stop: 121364, Start Num: 20

Candidate Starts for Forrest\_254:

(Start: 20 @120939 has 4 MA's), (37, 121056), (45, 121137), (46, 121146), (60, 121263), (64, 121299), (69, 121353),

Gene: Jada\_255 Start: 120179, Stop: 120604, Start Num: 20  
Candidate Starts for Jada\_255:  
(Start: 20 @120179 has 4 MA's), (37, 120296), (45, 120377), (46, 120386), (60, 120503), (64, 120539),  
(69, 120593),

Gene: Jflix2\_25 Start: 25439, Stop: 25867, Start Num: 26  
Candidate Starts for Jflix2\_25:  
(4, 24707), (6, 24917), (Start: 26 @25439 has 2 MA's), (41, 25574), (46, 25619), (61, 25760), (66,  
25793),

Gene: Karp\_197 Start: 102737, Stop: 102318, Start Num: 16  
Candidate Starts for Karp\_197:  
(Start: 15 @102743 has 2 MA's), (Start: 16 @102737 has 2 MA's), (34, 102620), (44, 102542), (52,  
102488), (60, 102416),

Gene: Kaylissa\_41 Start: 29646, Stop: 30089, Start Num: 17  
Candidate Starts for Kaylissa\_41:  
(10, 29565), (Start: 17 @29646 has 1 MA's), (43, 29868),

Gene: LazerLemon\_75 Start: 51475, Stop: 51948, Start Num: 15  
Candidate Starts for LazerLemon\_75:  
(Start: 15 @51475 has 2 MA's), (18, 51496), (29, 51565), (36, 51634), (45, 51721), (50, 51760), (54,  
51793), (59, 51844), (65, 51901),

Gene: Madraxi\_29 Start: 27630, Stop: 28058, Start Num: 26  
Candidate Starts for Madraxi\_29:  
(Start: 26 @27630 has 2 MA's), (41, 27765), (45, 27801), (46, 27810), (48, 27822), (61, 27951), (66,  
27984),

Gene: Manuel\_3 Start: 3413, Stop: 3811, Start Num: 23  
Candidate Starts for Manuel\_3:  
(19, 3383), (Start: 23 @3413 has 1 MA's), (45, 3590),

Gene: Milomuff\_3 Start: 670, Stop: 1044, Start Num: 28  
Candidate Starts for Milomuff\_3:  
(Start: 28 @670 has 1 MA's), (31, 694), (43, 826), (55, 910), (62, 979),

Gene: Nova53\_188 Start: 99250, Stop: 99705, Start Num: 16  
Candidate Starts for Nova53\_188:  
(12, 99220), (Start: 16 @99250 has 2 MA's), (42, 99475), (68, 99667),

Gene: Quby\_89 Start: 56408, Stop: 56815, Start Num: 27  
Candidate Starts for Quby\_89:  
(27, 56408), (35, 56486), (47, 56591), (48, 56594), (51, 56615), (56, 56660), (57, 56666), (64, 56741),  
(70, 56807),

Gene: SFuller\_27 Start: 26032, Stop: 26460, Start Num: 26  
Candidate Starts for SFuller\_27:  
(Start: 26 @26032 has 2 MA's), (41, 26167), (45, 26203), (46, 26212), (48, 26224), (61, 26353), (66,  
26386),

Gene: Shawty\_32 Start: 26307, Stop: 26723, Start Num: 25  
Candidate Starts for Shawty\_32:

(Start: 25 @26307 has 1 MA's), (33, 26400), (39, 26439), (63, 26661), (68, 26688),

Gene: Solea\_3 Start: 670, Stop: 1044, Start Num: 28

Candidate Starts for Solea\_3:

(Start: 28 @670 has 1 MA's), (31, 694), (43, 826), (55, 910), (62, 979),

Gene: TunaTartare\_254 Start: 124119, Stop: 124544, Start Num: 20

Candidate Starts for TunaTartare\_254:

(Start: 20 @124119 has 4 MA's), (37, 124236), (45, 124317), (46, 124326), (60, 124443), (61, 124464), (64, 124479), (69, 124533),

Gene: Westy\_204 Start: 103797, Stop: 103372, Start Num: 15

Candidate Starts for Westy\_204:

(Start: 15 @103797 has 2 MA's), (Start: 16 @103791 has 2 MA's), (34, 103674), (44, 103596), (52, 103542), (60, 103470),

Gene: Wolfstar\_46 Start: 22950, Stop: 22588, Start Num: 32

Candidate Starts for Wolfstar\_46:

(1, 25128), (2, 24834), (3, 24786), (5, 23553), (8, 23208), (9, 23199), (10, 23154), (11, 23139), (13, 23100), (24, 23016), (Start: 26 @22992 has 2 MA's), (30, 22968), (Start: 32 @22950 has 1 MA's), (53, 22752), (64, 22653),