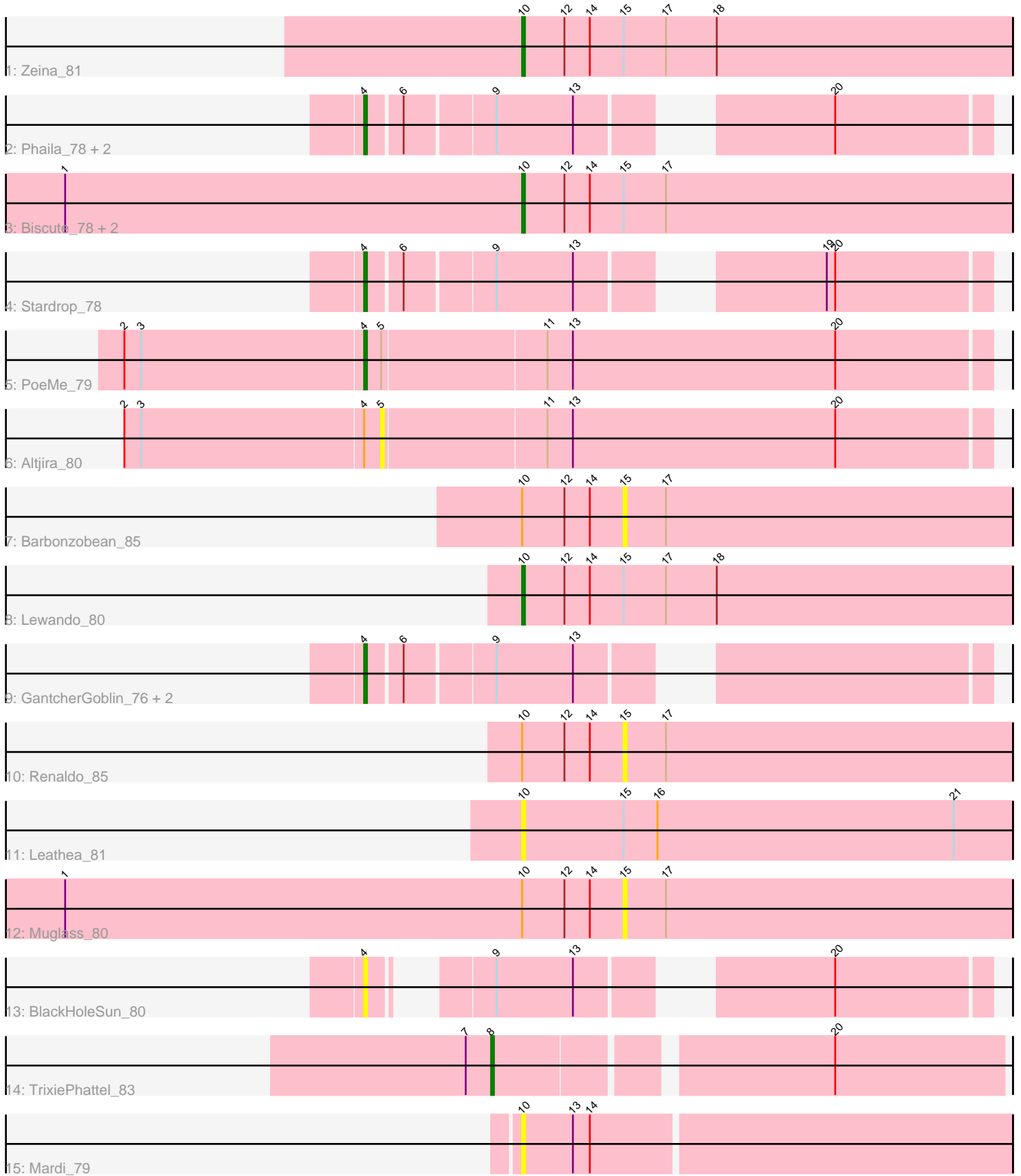


Pham 305321



Note: Tracks are now grouped by subcluster and scaled. Switching in subcluster is indicated by changes in track color. Track scale is now set by default to display the region 30 bp upstream of start 1 to 30 bp downstream of the last possible start. If this default region is judged to be packed too tightly with annotated starts, the track will be further scaled to only show that region of the ORF with annotated starts. This action will be indicated by adding "Zoomed" to the title. For starts, yellow indicates the location of called starts comprised solely of Glimmer/GeneMark auto-annotations, green indicates the location of called starts with at least 1 manual gene annotation.

Pham 305321 Report

This analysis was run 06/08/26 on database version 649.

Pham number 305321 has 21 members, 8 are drafts.

Phages represented in each track:

- Track 1 : Zeina_81
- Track 2 : Phaila_78, Argan_77, Navi1117_82
- Track 3 : Biscute_78, Kinny_81, BarbieDoll_82
- Track 4 : Stardrop_78
- Track 5 : PoeMe_79
- Track 6 : Altjira_80
- Track 7 : Barbonzobean_85
- Track 8 : Lewando_80
- Track 9 : GantcherGoblin_76, Tenney120_80, KevinMinion_75
- Track 10 : Renaldo_85
- Track 11 : Leathea_81
- Track 12 : Muglass_80
- Track 13 : BlackHoleSun_80
- Track 14 : TrixiePhattel_83
- Track 15 : Mardi_79

Summary of Final Annotations (See graph section above for start numbers):

The start number called the most often in the published annotations is 4, it was called in 8 of the 13 non-draft genes in the pham.

Genes that call this "Most Annotated" start:

- Argan_77, BlackHoleSun_80, GantcherGoblin_76, KevinMinion_75, Navi1117_82, Phaila_78, PoeMe_79, Stardrop_78, Tenney120_80,

Genes that have the "Most Annotated" start but do not call it:

- Altjira_80,

Genes that do not have the "Most Annotated" start:

- BarbieDoll_82, Barbonzobean_85, Biscute_78, Kinny_81, Leathea_81, Lewando_80, Mardi_79, Muglass_80, Renaldo_85, TrixiePhattel_83, Zeina_81,

Summary by start number:

Start 4:

- Found in 10 of 21 (47.6%) of genes in pham
- Manual Annotations of this start: 8 of 13
- Called 90.0% of time when present
- Phage (with cluster) where this start called: Argan_77 (AU6), BlackHoleSun_80 (AU6), GantcherGoblin_76 (AU6), KevinMinion_75 (AU6), Navi1117_82 (AU6), Phaila_78 (AU6), PoeMe_79 (AU6), Stardrop_78 (AU6), Tenney120_80 (AU6),

Start 5:

- Found in 2 of 21 (9.5%) of genes in pham
- No Manual Annotations of this start.
- Called 50.0% of time when present
- Phage (with cluster) where this start called: Altjira_80 (AU6),

Start 8:

- Found in 1 of 21 (4.8%) of genes in pham
- Manual Annotations of this start: 1 of 13
- Called 100.0% of time when present
- Phage (with cluster) where this start called: TrixiePhattel_83 (AU6),

Start 10:

- Found in 10 of 21 (47.6%) of genes in pham
- Manual Annotations of this start: 4 of 13
- Called 70.0% of time when present
- Phage (with cluster) where this start called: BarbieDoll_82 (AU6), Biscute_78 (AU6), Kinny_81 (AU6), Leathea_81 (AU6), Lewando_80 (AU6), Mardi_79 (AU6), Zeina_81 (AU6),

Start 15:

- Found in 9 of 21 (42.9%) of genes in pham
- No Manual Annotations of this start.
- Called 33.3% of time when present
- Phage (with cluster) where this start called: Barbonzobean_85 (AU6), Muglass_80 (AU6), Renaldo_85 (AU6),

Summary by clusters:

There is one cluster represented in this pham: AU6

Info for manual annotations of cluster AU6:

- Start number 4 was manually annotated 8 times for cluster AU6.
- Start number 8 was manually annotated 1 time for cluster AU6.
- Start number 10 was manually annotated 4 times for cluster AU6.

Gene Information:

Gene: Altjira_80 Start: 48667, Stop: 48879, Start Num: 5

Candidate Starts for Altjira_80:

(2, 48577), (3, 48583), (Start: 4 @48661 has 8 MA's), (5, 48667), (11, 48724), (13, 48733), (20, 48826),

Gene: Argan_77 Start: 47252, Stop: 47443, Start Num: 4

Candidate Starts for Argan_77:

(Start: 4 @47252 has 8 MA's), (6, 47264), (9, 47294), (13, 47321), (20, 47390),

Gene: BarbieDoll_82 Start: 48868, Stop: 49041, Start Num: 10

Candidate Starts for BarbieDoll_82:

(1, 48706), (Start: 10 @48868 has 4 MA's), (12, 48883), (14, 48892), (15, 48904), (17, 48919),

Gene: Barbonzobean_85 Start: 49412, Stop: 49549, Start Num: 15

Candidate Starts for Barbonzobean_85:

(Start: 10 @49376 has 4 MA's), (12, 49391), (14, 49400), (15, 49412), (17, 49427),

Gene: Biscute_78 Start: 48520, Stop: 48693, Start Num: 10

Candidate Starts for Biscute_78:

(1, 48358), (Start: 10 @48520 has 4 MA's), (12, 48535), (14, 48544), (15, 48556), (17, 48571),

Gene: BlackHoleSun_80 Start: 48029, Stop: 48205, Start Num: 4

Candidate Starts for BlackHoleSun_80:

(Start: 4 @48029 has 8 MA's), (9, 48056), (13, 48083), (20, 48152),

Gene: GantcherGoblin_76 Start: 47413, Stop: 47604, Start Num: 4

Candidate Starts for GantcherGoblin_76:

(Start: 4 @47413 has 8 MA's), (6, 47425), (9, 47455), (13, 47482),

Gene: KevinMinion_75 Start: 48203, Stop: 48394, Start Num: 4

Candidate Starts for KevinMinion_75:

(Start: 4 @48203 has 8 MA's), (6, 48215), (9, 48245), (13, 48272),

Gene: Kinny_81 Start: 49347, Stop: 49520, Start Num: 10

Candidate Starts for Kinny_81:

(1, 49185), (Start: 10 @49347 has 4 MA's), (12, 49362), (14, 49371), (15, 49383), (17, 49398),

Gene: Leathea_81 Start: 47466, Stop: 47639, Start Num: 10

Candidate Starts for Leathea_81:

(Start: 10 @47466 has 4 MA's), (15, 47502), (16, 47514), (21, 47619),

Gene: Lewando_80 Start: 48656, Stop: 48829, Start Num: 10

Candidate Starts for Lewando_80:

(Start: 10 @48656 has 4 MA's), (12, 48671), (14, 48680), (15, 48692), (17, 48707), (18, 48725),

Gene: Mardi_79 Start: 48080, Stop: 48250, Start Num: 10

Candidate Starts for Mardi_79:

(Start: 10 @48080 has 4 MA's), (13, 48098), (14, 48104),

Gene: Muglass_80 Start: 48460, Stop: 48597, Start Num: 15

Candidate Starts for Muglass_80:

(1, 48262), (Start: 10 @48424 has 4 MA's), (12, 48439), (14, 48448), (15, 48460), (17, 48475),

Gene: Navi1117_82 Start: 48959, Stop: 49150, Start Num: 4

Candidate Starts for Navi1117_82:

(Start: 4 @48959 has 8 MA's), (6, 48971), (9, 49001), (13, 49028), (20, 49097),

Gene: Phaila_78 Start: 47433, Stop: 47624, Start Num: 4

Candidate Starts for Phaila_78:

(Start: 4 @47433 has 8 MA's), (6, 47445), (9, 47475), (13, 47502), (20, 47571),

Gene: PoeMe_79 Start: 48361, Stop: 48579, Start Num: 4

Candidate Starts for PoeMe_79:

(2, 48277), (3, 48283), (Start: 4 @48361 has 8 MA's), (5, 48367), (11, 48424), (13, 48433), (20, 48526),

Gene: Renaldo_85 Start: 48904, Stop: 49041, Start Num: 15

Candidate Starts for Renaldo_85:

(Start: 10 @48868 has 4 MA's), (12, 48883), (14, 48892), (15, 48904), (17, 48919),

Gene: Stardrop_78 Start: 48365, Stop: 48556, Start Num: 4

Candidate Starts for Stardrop_78:

(Start: 4 @48365 has 8 MA's), (6, 48377), (9, 48407), (13, 48434), (19, 48500), (20, 48503),

Gene: Tenney120_80 Start: 48450, Stop: 48641, Start Num: 4

Candidate Starts for Tenney120_80:

(Start: 4 @48450 has 8 MA's), (6, 48462), (9, 48492), (13, 48519),

Gene: TrixiePhattel_83 Start: 48533, Stop: 48703, Start Num: 8

Candidate Starts for TrixiePhattel_83:

(7, 48524), (Start: 8 @48533 has 1 MA's), (20, 48644),

Gene: Zeina_81 Start: 48117, Stop: 48290, Start Num: 10

Candidate Starts for Zeina_81:

(Start: 10 @48117 has 4 MA's), (12, 48132), (14, 48141), (15, 48153), (17, 48168), (18, 48186),