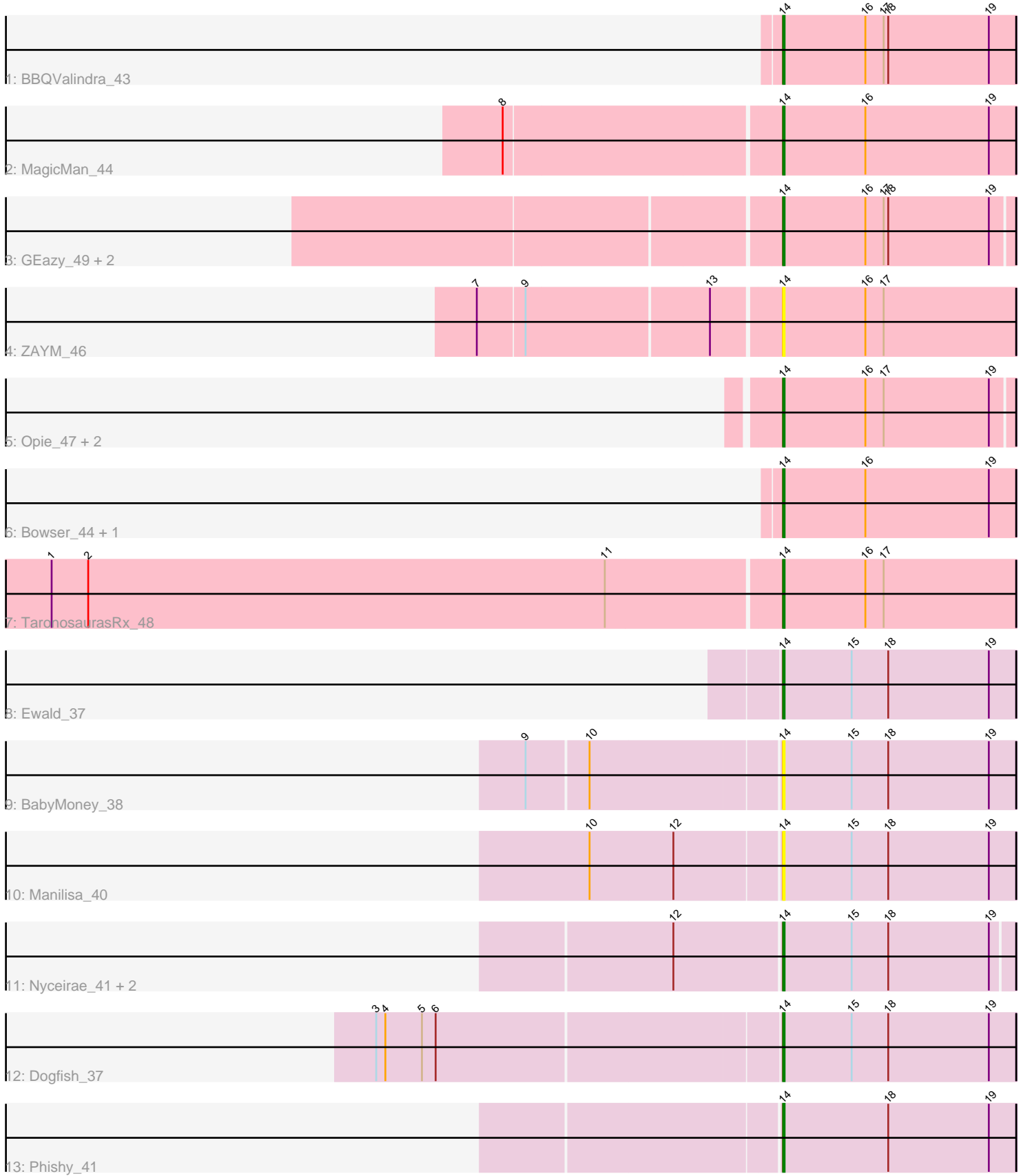


Pham 305329



Note: Tracks are now grouped by subcluster and scaled. Switching in subcluster is indicated by changes in track color. Track scale is now set by default to display the region 30 bp upstream of start 1 to 30 bp downstream of the last possible start. If this default region is judged to be packed too tightly with annotated starts, the track will be further scaled to only show that region of the ORF with annotated starts. This action will be indicated by adding "Zoomed" to the title. For starts, yellow indicates the location of called starts comprised solely of Glimmer/GeneMark auto-annotations, green indicates the location of called starts with at least 1 manual gene annotation.

## Pham 305329 Report

This analysis was run 06/08/26 on database version 649.

Pham number 305329 has 20 members, 6 are drafts.

Phages represented in each track:

- Track 1 : BBQValindra\_43
- Track 2 : MagicMan\_44
- Track 3 : GEazy\_49, NaLuna\_47, HannahD\_46
- Track 4 : ZAYM\_46
- Track 5 : Opie\_47, Eyes\_42, Jecs\_46
- Track 6 : Bowser\_44, Schnabeltier\_45
- Track 7 : TaronosaurusRx\_48
- Track 8 : Ewald\_37
- Track 9 : BabyMoney\_38
- Track 10 : Manilisa\_40
- Track 11 : Nyceirae\_41, Vordorf\_38, Meyran\_37
- Track 12 : Dogfish\_37
- Track 13 : Phishy\_41

### ***Summary of Final Annotations (See graph section above for start numbers):***

The start number called the most often in the published annotations is 14, it was called in 14 of the 14 non-draft genes in the pham.

Genes that call this "Most Annotated" start:

- BBQValindra\_43, BabyMoney\_38, Bowser\_44, Dogfish\_37, Ewald\_37, Eyes\_42, GEazy\_49, HannahD\_46, Jecs\_46, MagicMan\_44, Manilisa\_40, Meyran\_37, NaLuna\_47, Nyceirae\_41, Opie\_47, Phishy\_41, Schnabeltier\_45, TaronosaurusRx\_48, Vordorf\_38, ZAYM\_46,

Genes that have the "Most Annotated" start but do not call it:

- 

Genes that do not have the "Most Annotated" start:

- 

### **Summary by start number:**

Start 14:

- Found in 20 of 20 ( 100.0% ) of genes in pham
- Manual Annotations of this start: 14 of 14
- Called 100.0% of time when present
- Phage (with cluster) where this start called: BBQValindra\_43 (DB), BabyMoney\_38 (DT), Bowser\_44 (DB), Dogfish\_37 (DT), Ewald\_37 (DT), Eyes\_42 (DB), GEazy\_49 (DB), HannahD\_46 (DB), Jecs\_46 (DB), MagicMan\_44 (DB), Manilisa\_40 (DT), Meyran\_37 (DT), NaLuna\_47 (DB), Nyceirae\_41 (DT), Opie\_47 (DB), Phishy\_41 (DT), Schnabeltier\_45 (DB), TaronosaurusRx\_48 (DB), Vordorf\_38 (DT), ZAYM\_46 (DB),

### **Summary by clusters:**

There are 2 clusters represented in this pham: DT, DB,

Info for manual annotations of cluster DB:

- Start number 14 was manually annotated 9 times for cluster DB.

Info for manual annotations of cluster DT:

- Start number 14 was manually annotated 5 times for cluster DT.

### **Gene Information:**

Gene: BBQValindra\_43 Start: 34125, Stop: 34277, Start Num: 14

Candidate Starts for BBQValindra\_43:

(Start: 14 @34125 has 14 MA's), (16, 34179), (17, 34191), (18, 34194), (19, 34260),

Gene: BabyMoney\_38 Start: 31354, Stop: 31506, Start Num: 14

Candidate Starts for BabyMoney\_38:

(9, 31195), (10, 31234), (Start: 14 @31354 has 14 MA's), (15, 31399), (18, 31423), (19, 31489),

Gene: Bowser\_44 Start: 33934, Stop: 34086, Start Num: 14

Candidate Starts for Bowser\_44:

(Start: 14 @33934 has 14 MA's), (16, 33988), (19, 34069),

Gene: Dogfish\_37 Start: 30784, Stop: 30936, Start Num: 14

Candidate Starts for Dogfish\_37:

(3, 30526), (4, 30532), (5, 30556), (6, 30565), (Start: 14 @30784 has 14 MA's), (15, 30829), (18, 30853), (19, 30919),

Gene: Ewald\_37 Start: 30602, Stop: 30754, Start Num: 14

Candidate Starts for Ewald\_37:

(Start: 14 @30602 has 14 MA's), (15, 30647), (18, 30671), (19, 30737),

Gene: Eyes\_42 Start: 33981, Stop: 34130, Start Num: 14

Candidate Starts for Eyes\_42:

(Start: 14 @33981 has 14 MA's), (16, 34035), (17, 34047), (19, 34116),

Gene: GEazy\_49 Start: 34256, Stop: 34405, Start Num: 14

Candidate Starts for GEazy\_49:

(Start: 14 @34256 has 14 MA's), (16, 34310), (17, 34322), (18, 34325), (19, 34391),

Gene: HannahD\_46 Start: 33623, Stop: 33772, Start Num: 14  
Candidate Starts for HannahD\_46:  
(Start: 14 @33623 has 14 MA's), (16, 33677), (17, 33689), (18, 33692), (19, 33758),

Gene: Jecs\_46 Start: 33620, Stop: 33769, Start Num: 14  
Candidate Starts for Jecs\_46:  
(Start: 14 @33620 has 14 MA's), (16, 33674), (17, 33686), (19, 33755),

Gene: MagicMan\_44 Start: 33860, Stop: 34012, Start Num: 14  
Candidate Starts for MagicMan\_44:  
(8, 33686), (Start: 14 @33860 has 14 MA's), (16, 33914), (19, 33995),

Gene: Manilisa\_40 Start: 31756, Stop: 31908, Start Num: 14  
Candidate Starts for Manilisa\_40:  
(10, 31636), (12, 31690), (Start: 14 @31756 has 14 MA's), (15, 31801), (18, 31825), (19, 31891),

Gene: Meyran\_37 Start: 31676, Stop: 31828, Start Num: 14  
Candidate Starts for Meyran\_37:  
(12, 31610), (Start: 14 @31676 has 14 MA's), (15, 31721), (18, 31745), (19, 31811),

Gene: NaLuna\_47 Start: 33623, Stop: 33772, Start Num: 14  
Candidate Starts for NaLuna\_47:  
(Start: 14 @33623 has 14 MA's), (16, 33677), (17, 33689), (18, 33692), (19, 33758),

Gene: Nyceirae\_41 Start: 31490, Stop: 31639, Start Num: 14  
Candidate Starts for Nyceirae\_41:  
(12, 31421), (Start: 14 @31490 has 14 MA's), (15, 31535), (18, 31559), (19, 31625),

Gene: Opie\_47 Start: 34808, Stop: 34957, Start Num: 14  
Candidate Starts for Opie\_47:  
(Start: 14 @34808 has 14 MA's), (16, 34862), (17, 34874), (19, 34943),

Gene: Phishy\_41 Start: 32661, Stop: 32813, Start Num: 14  
Candidate Starts for Phishy\_41:  
(Start: 14 @32661 has 14 MA's), (18, 32730), (19, 32796),

Gene: Schnabeltier\_45 Start: 34053, Stop: 34205, Start Num: 14  
Candidate Starts for Schnabeltier\_45:  
(Start: 14 @34053 has 14 MA's), (16, 34107), (19, 34188),

Gene: TaronosaurusRx\_48 Start: 33378, Stop: 33530, Start Num: 14  
Candidate Starts for TaronosaurusRx\_48:  
(1, 32904), (2, 32928), (11, 33267), (Start: 14 @33378 has 14 MA's), (16, 33432), (17, 33444),

Gene: Vordorf\_38 Start: 30951, Stop: 31103, Start Num: 14  
Candidate Starts for Vordorf\_38:  
(12, 30885), (Start: 14 @30951 has 14 MA's), (15, 30996), (18, 31020), (19, 31086),

Gene: ZAYM\_46 Start: 33126, Stop: 33278, Start Num: 14  
Candidate Starts for ZAYM\_46:  
(7, 32937), (9, 32967), (13, 33084), (Start: 14 @33126 has 14 MA's), (16, 33180), (17, 33192),