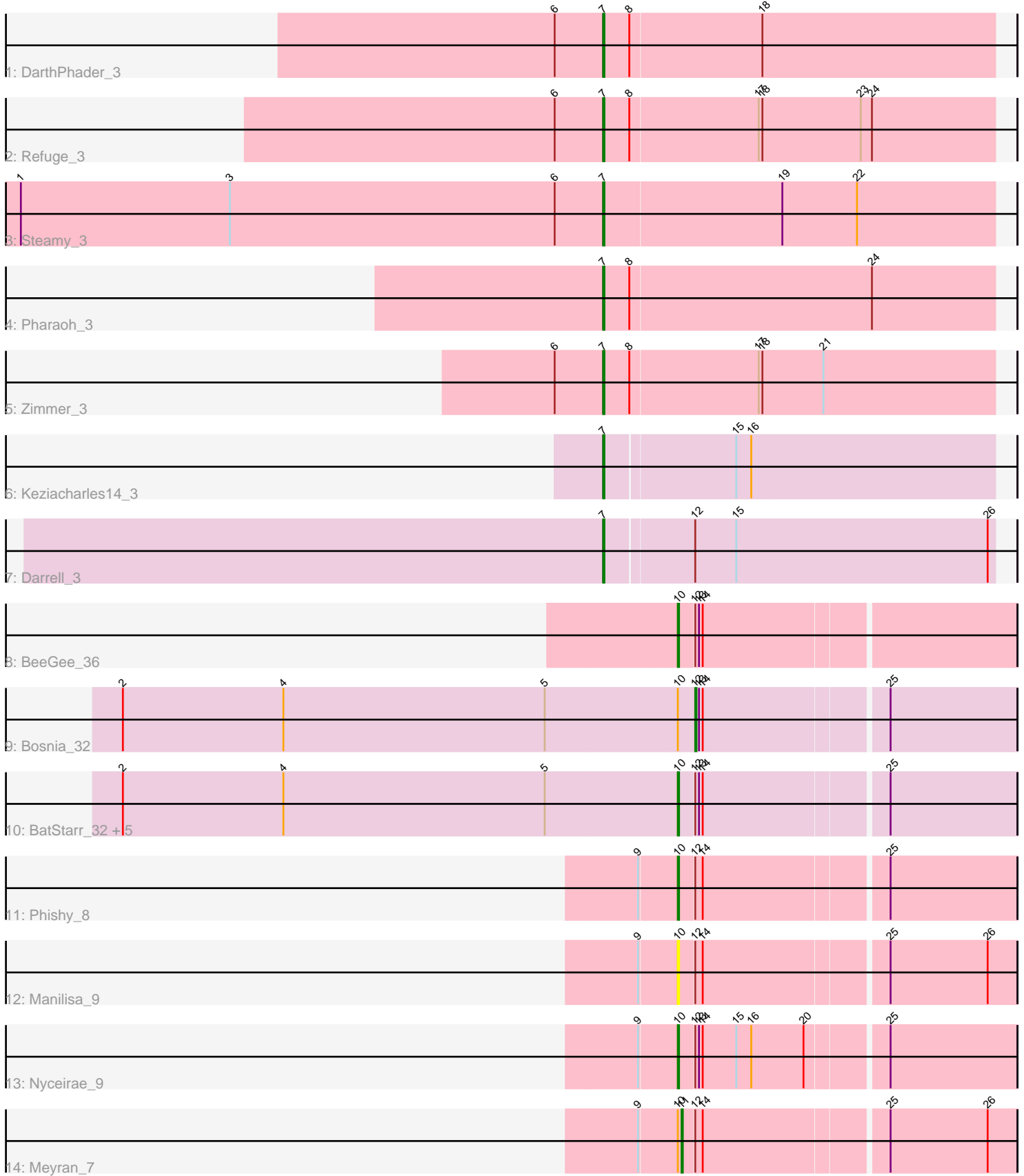


Pham 305348



Note: Tracks are now grouped by subcluster and scaled. Switching in subcluster is indicated by changes in track color. Track scale is now set by default to display the region 30 bp upstream of start 1 to 30 bp downstream of the last possible start. If this default region is judged to be packed too tightly with annotated starts, the track will be further scaled to only show that region of the ORF with annotated starts. This action will be indicated by adding "Zoomed" to the title. For starts, yellow indicates the location of called starts comprised solely of Glimmer/GeneMark auto-annotations, green indicates the location of called starts with at least 1 manual gene annotation.

Pham 305348 Report

This analysis was run 06/08/26 on database version 649.

Pham number 305348 has 19 members, 2 are drafts.

Phages represented in each track:

- Track 1 : DarthPhader_3
- Track 2 : Refuge_3
- Track 3 : Steamy_3
- Track 4 : Pharaoh_3
- Track 5 : Zimmer_3
- Track 6 : Keziacharles14_3
- Track 7 : Darrell_3
- Track 8 : BeeGee_36
- Track 9 : Bosnia_32
- Track 10 : BatStarr_32, Nymphadora_32, Herod_32, Hugley_31, Eviarto_32, TimTam_32
- Track 11 : Phishy_8
- Track 12 : Manilisa_9
- Track 13 : Nyceirae_9
- Track 14 : Meyran_7

Summary of Final Annotations (See graph section above for start numbers):

The start number called the most often in the published annotations is 10, it was called in 8 of the 17 non-draft genes in the pham.

Genes that call this "Most Annotated" start:

- BatStarr_32, BeeGee_36, Eviarto_32, Herod_32, Hugley_31, Manilisa_9, Nyceirae_9, Nymphadora_32, Phishy_8, TimTam_32,

Genes that have the "Most Annotated" start but do not call it:

- Bosnia_32, Meyran_7,

Genes that do not have the "Most Annotated" start:

- Darrell_3, DarthPhader_3, Keziacharles14_3, Pharaoh_3, Refuge_3, Steamy_3, Zimmer_3,

Summary by start number:

Start 7:

- Found in 7 of 19 (36.8%) of genes in pham
- Manual Annotations of this start: 7 of 17
- Called 100.0% of time when present
- Phage (with cluster) where this start called: Darrell_3 (A9), DARTHPhader_3 (A12), Keziacharles14_3 (A9), Pharaoh_3 (A12), Refuge_3 (A12), Steamy_3 (A12), Zimmer_3 (A12),

Start 10:

- Found in 12 of 19 (63.2%) of genes in pham
- Manual Annotations of this start: 8 of 17
- Called 83.3% of time when present
- Phage (with cluster) where this start called: BatStarr_32 (CZ1), BeeGee_36 (CY5), Eviarto_32 (CZ1), Herod_32 (CZ1), Hugley_31 (CZ1), Manilisa_9 (DT), Nyceirae_9 (DT), Nymphadora_32 (CZ1), Phishy_8 (DT), TimTam_32 (CZ1),

Start 11:

- Found in 1 of 19 (5.3%) of genes in pham
- Manual Annotations of this start: 1 of 17
- Called 100.0% of time when present
- Phage (with cluster) where this start called: Meyran_7 (DT),

Start 12:

- Found in 13 of 19 (68.4%) of genes in pham
- Manual Annotations of this start: 1 of 17
- Called 7.7% of time when present
- Phage (with cluster) where this start called: Bosnia_32 (CZ1),

Summary by clusters:

There are 5 clusters represented in this pham: A9, DT, CZ1, CY5, A12,

Info for manual annotations of cluster A12:

- Start number 7 was manually annotated 5 times for cluster A12.

Info for manual annotations of cluster A9:

- Start number 7 was manually annotated 2 times for cluster A9.

Info for manual annotations of cluster CY5:

- Start number 10 was manually annotated 1 time for cluster CY5.

Info for manual annotations of cluster CZ1:

- Start number 10 was manually annotated 5 times for cluster CZ1.
- Start number 12 was manually annotated 1 time for cluster CZ1.

Info for manual annotations of cluster DT:

- Start number 10 was manually annotated 2 times for cluster DT.
- Start number 11 was manually annotated 1 time for cluster DT.

Gene Information:

Gene: BatStarr_32 Start: 28866, Stop: 29126, Start Num: 10
Candidate Starts for BatStarr_32:
(2, 28422), (4, 28551), (5, 28761), (Start: 10 @28866 has 8 MA's), (Start: 12 @28878 has 1 MA's), (13, 28881), (14, 28884), (25, 29025),

Gene: BeeGee_36 Start: 29645, Stop: 29905, Start Num: 10
Candidate Starts for BeeGee_36:
(Start: 10 @29645 has 8 MA's), (Start: 12 @29657 has 1 MA's), (13, 29660), (14, 29663),

Gene: Bosnia_32 Start: 28878, Stop: 29126, Start Num: 12
Candidate Starts for Bosnia_32:
(2, 28422), (4, 28551), (5, 28761), (Start: 10 @28866 has 8 MA's), (Start: 12 @28878 has 1 MA's), (13, 28881), (14, 28884), (25, 29025),

Gene: Darrell_3 Start: 1912, Stop: 2220, Start Num: 7
Candidate Starts for Darrell_3:
(Start: 7 @1912 has 7 MA's), (Start: 12 @1981 has 1 MA's), (15, 2014), (26, 2215),

Gene: DARTHPhader_3 Start: 1938, Stop: 2249, Start Num: 7
Candidate Starts for DARTHPhader_3:
(6, 1899), (Start: 7 @1938 has 7 MA's), (8, 1959), (18, 2064),

Gene: Eviarto_32 Start: 28842, Stop: 29102, Start Num: 10
Candidate Starts for Eviarto_32:
(2, 28398), (4, 28527), (5, 28737), (Start: 10 @28842 has 8 MA's), (Start: 12 @28854 has 1 MA's), (13, 28857), (14, 28860), (25, 29001),

Gene: Herod_32 Start: 28866, Stop: 29126, Start Num: 10
Candidate Starts for Herod_32:
(2, 28422), (4, 28551), (5, 28761), (Start: 10 @28866 has 8 MA's), (Start: 12 @28878 has 1 MA's), (13, 28881), (14, 28884), (25, 29025),

Gene: Hugley_31 Start: 28865, Stop: 29125, Start Num: 10
Candidate Starts for Hugley_31:
(2, 28421), (4, 28550), (5, 28760), (Start: 10 @28865 has 8 MA's), (Start: 12 @28877 has 1 MA's), (13, 28880), (14, 28883), (25, 29024),

Gene: Keziacharles14_3 Start: 1907, Stop: 2215, Start Num: 7
Candidate Starts for Keziacharles14_3:
(Start: 7 @1907 has 7 MA's), (15, 2009), (16, 2021),

Gene: Manilisa_9 Start: 6442, Stop: 6702, Start Num: 10
Candidate Starts for Manilisa_9:
(9, 6412), (Start: 10 @6442 has 8 MA's), (Start: 12 @6454 has 1 MA's), (14, 6460), (25, 6601), (26, 6679),

Gene: Meyran_7 Start: 6273, Stop: 6530, Start Num: 11
Candidate Starts for Meyran_7:
(9, 6240), (Start: 10 @6270 has 8 MA's), (Start: 11 @6273 has 1 MA's), (Start: 12 @6282 has 1 MA's), (14, 6288), (25, 6429), (26, 6507),

Gene: Nyceirae_9 Start: 6259, Stop: 6519, Start Num: 10
Candidate Starts for Nyceirae_9:

(9, 6229), (Start: 10 @6259 has 8 MA's), (Start: 12 @6271 has 1 MA's), (13, 6274), (14, 6277), (15, 6304), (16, 6316), (20, 6358), (25, 6418),

Gene: Nymphadora_32 Start: 28866, Stop: 29126, Start Num: 10

Candidate Starts for Nymphadora_32:

(2, 28422), (4, 28551), (5, 28761), (Start: 10 @28866 has 8 MA's), (Start: 12 @28878 has 1 MA's), (13, 28881), (14, 28884), (25, 29025),

Gene: Pharaoh_3 Start: 1910, Stop: 2221, Start Num: 7

Candidate Starts for Pharaoh_3:

(Start: 7 @1910 has 7 MA's), (8, 1931), (24, 2123),

Gene: Phishy_8 Start: 6231, Stop: 6491, Start Num: 10

Candidate Starts for Phishy_8:

(9, 6201), (Start: 10 @6231 has 8 MA's), (Start: 12 @6243 has 1 MA's), (14, 6249), (25, 6390),

Gene: Refuge_3 Start: 1939, Stop: 2250, Start Num: 7

Candidate Starts for Refuge_3:

(6, 1900), (Start: 7 @1939 has 7 MA's), (8, 1960), (17, 2062), (18, 2065), (23, 2143), (24, 2152),

Gene: Steamy_3 Start: 1910, Stop: 2221, Start Num: 7

Candidate Starts for Steamy_3:

(1, 1442), (3, 1610), (6, 1871), (Start: 7 @1910 has 7 MA's), (19, 2051), (22, 2111),

Gene: TimTam_32 Start: 28866, Stop: 29126, Start Num: 10

Candidate Starts for TimTam_32:

(2, 28422), (4, 28551), (5, 28761), (Start: 10 @28866 has 8 MA's), (Start: 12 @28878 has 1 MA's), (13, 28881), (14, 28884), (25, 29025),

Gene: Zimmer_3 Start: 1948, Stop: 2259, Start Num: 7

Candidate Starts for Zimmer_3:

(6, 1909), (Start: 7 @1948 has 7 MA's), (8, 1969), (17, 2071), (18, 2074), (21, 2122),