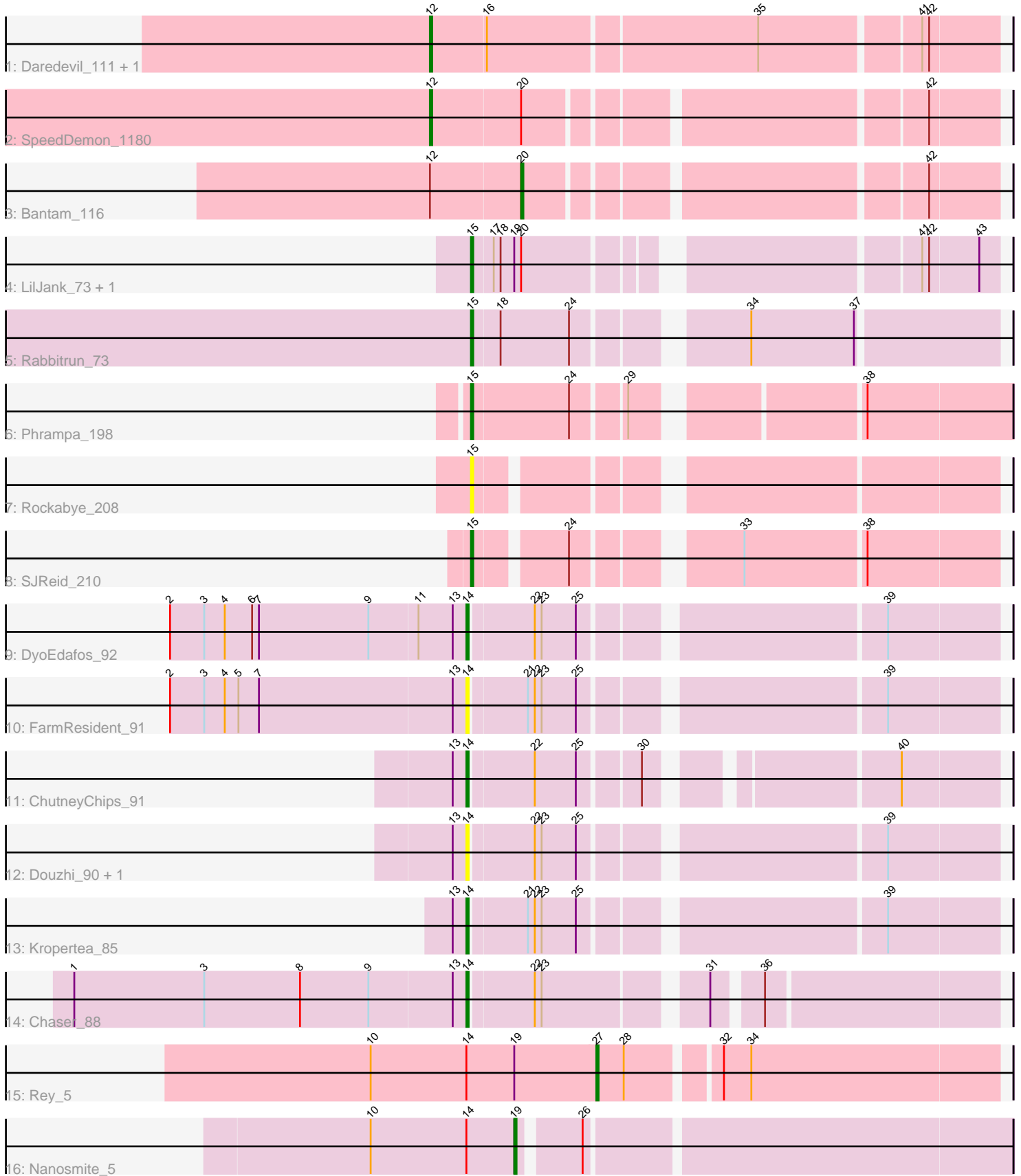


Pham 305349



Note: Tracks are now grouped by subcluster and scaled. Switching in subcluster is indicated by changes in track color. Track scale is now set by default to display the region 30 bp upstream of start 1 to 30 bp downstream of the last possible start. If this default region is judged to be packed too tightly with annotated starts, the track will be further scaled to only show that region of the ORF with annotated starts. This action will be indicated by adding "Zoomed" to the title. For starts, yellow indicates the location of called starts comprised solely of Glimmer/GeneMark auto-annotations, green indicates the location of called starts with at least 1 manual gene annotation.

Pham 305349 Report

This analysis was run 06/08/26 on database version 649.

Pham number 305349 has 19 members, 5 are drafts.

Phages represented in each track:

- Track 1 : Daredevil_111, Towmatter_111
- Track 2 : SpeedDemon_1180
- Track 3 : Bantam_116
- Track 4 : LilJank_73, Trax_73
- Track 5 : Rabbitrun_73
- Track 6 : Phrampa_198
- Track 7 : Rockabye_208
- Track 8 : SJReid_210
- Track 9 : DyoEdafos_92
- Track 10 : FarmResident_91
- Track 11 : ChutneyChips_91
- Track 12 : Douzhi_90, Sheng711_91
- Track 13 : Kropertea_85
- Track 14 : Chaser_88
- Track 15 : Rey_5
- Track 16 : Nanosmite_5

Summary of Final Annotations (See graph section above for start numbers):

The start number called the most often in the published annotations is 14, it was called in 4 of the 14 non-draft genes in the pham.

Genes that call this "Most Annotated" start:

- Chaser_88, ChutneyChips_91, Douzhi_90, DyoEdafos_92, FarmResident_91, Kropertea_85, Sheng711_91,

Genes that have the "Most Annotated" start but do not call it:

- Nanosmite_5, Rey_5,

Genes that do not have the "Most Annotated" start:

- Bantam_116, Daredevil_111, LilJank_73, Phrampa_198, Rabbitrun_73, Rockabye_208, SJReid_210, SpeedDemon_1180, Towmatter_111, Trax_73,

Summary by start number:

Start 12:

- Found in 4 of 19 (21.1%) of genes in pham
- Manual Annotations of this start: 3 of 14
- Called 75.0% of time when present
- Phage (with cluster) where this start called: Daredevil_111 (DL), SpeedDemon_1180 (DL), Towmatter_111 (DL),

Start 14:

- Found in 9 of 19 (47.4%) of genes in pham
- Manual Annotations of this start: 4 of 14
- Called 77.8% of time when present
- Phage (with cluster) where this start called: Chaser_88 (L4), ChutneyChips_91 (L4), Douzhi_90 (L4), DyoEdafos_92 (L4), FarmResident_91 (L4), Kropertea_85 (L4), Sheng711_91 (L4),

Start 15:

- Found in 6 of 19 (31.6%) of genes in pham
- Manual Annotations of this start: 4 of 14
- Called 100.0% of time when present
- Phage (with cluster) where this start called: LilJank_73 (DU2), Phrampa_198 (FC), Rabbitrun_73 (DU2), Rockabye_208 (FC), SJReid_210 (FC), Trax_73 (DU2),

Start 19:

- Found in 4 of 19 (21.1%) of genes in pham
- Manual Annotations of this start: 1 of 14
- Called 25.0% of time when present
- Phage (with cluster) where this start called: Nanosmite_5 (M3),

Start 20:

- Found in 4 of 19 (21.1%) of genes in pham
- Manual Annotations of this start: 1 of 14
- Called 25.0% of time when present
- Phage (with cluster) where this start called: Bantam_116 (DL),

Start 27:

- Found in 1 of 19 (5.3%) of genes in pham
- Manual Annotations of this start: 1 of 14
- Called 100.0% of time when present
- Phage (with cluster) where this start called: Rey_5 (M2),

Summary by clusters:

There are 6 clusters represented in this pham: DL, L4, FC, M3, M2, DU2,

Info for manual annotations of cluster DL:

- Start number 12 was manually annotated 3 times for cluster DL.
- Start number 20 was manually annotated 1 time for cluster DL.

Info for manual annotations of cluster DU2:

- Start number 15 was manually annotated 2 times for cluster DU2.

Info for manual annotations of cluster FC:

- Start number 15 was manually annotated 2 times for cluster FC.

Info for manual annotations of cluster L4:

- Start number 14 was manually annotated 4 times for cluster L4.

Info for manual annotations of cluster M2:

- Start number 27 was manually annotated 1 time for cluster M2.

Info for manual annotations of cluster M3:

- Start number 19 was manually annotated 1 time for cluster M3.

Gene Information:

Gene: Bantam_116 Start: 73048, Stop: 73236, Start Num: 20

Candidate Starts for Bantam_116:

(Start: 12 @73009 has 3 MA's), (Start: 20 @73048 has 1 MA's), (42, 73207),

Gene: Chaser_88 Start: 56443, Stop: 56652, Start Num: 14

Candidate Starts for Chaser_88:

(1, 56272), (3, 56329), (8, 56371), (9, 56401), (13, 56437), (Start: 14 @56443 has 4 MA's), (22, 56470), (23, 56473), (31, 56536), (36, 56554),

Gene: ChutneyChips_91 Start: 57198, Stop: 57401, Start Num: 14

Candidate Starts for ChutneyChips_91:

(13, 57192), (Start: 14 @57198 has 4 MA's), (22, 57225), (25, 57243), (30, 57267), (40, 57360),

Gene: Daredevil_111 Start: 69987, Stop: 70223, Start Num: 12

Candidate Starts for Daredevil_111:

(Start: 12 @69987 has 3 MA's), (16, 70011), (35, 70125), (41, 70191), (42, 70194),

Gene: Douzhi_90 Start: 57001, Stop: 57213, Start Num: 14

Candidate Starts for Douzhi_90:

(13, 56995), (Start: 14 @57001 has 4 MA's), (22, 57028), (23, 57031), (25, 57046), (39, 57166),

Gene: DyoEdafos_92 Start: 57153, Stop: 57365, Start Num: 14

Candidate Starts for DyoEdafos_92:

(2, 57024), (3, 57039), (4, 57048), (6, 57060), (7, 57063), (9, 57111), (11, 57132), (13, 57147), (Start: 14 @57153 has 4 MA's), (22, 57180), (23, 57183), (25, 57198), (39, 57318),

Gene: FarmResident_91 Start: 56713, Stop: 56925, Start Num: 14

Candidate Starts for FarmResident_91:

(2, 56584), (3, 56599), (4, 56608), (5, 56614), (7, 56623), (13, 56707), (Start: 14 @56713 has 4 MA's), (21, 56737), (22, 56740), (23, 56743), (25, 56758), (39, 56878),

Gene: Kropertea_85 Start: 56433, Stop: 56645, Start Num: 14

Candidate Starts for Kropertea_85:

(13, 56427), (Start: 14 @56433 has 4 MA's), (21, 56457), (22, 56460), (23, 56463), (25, 56478), (39, 56598),

Gene: LilJank_73 Start: 46004, Stop: 46207, Start Num: 15

Candidate Starts for LilJank_73:

(Start: 15 @46004 has 4 MA's), (17, 46013), (18, 46016), (Start: 19 @46022 has 1 MA's), (Start: 20 @46025 has 1 MA's), (41, 46175), (42, 46178), (43, 46199),

Gene: Nanosmite_5 Start: 2451, Stop: 2248, Start Num: 19

Candidate Starts for Nanosmite_5:

(10, 2514), (Start: 14 @2472 has 4 MA's), (Start: 19 @2451 has 1 MA's), (26, 2427),

Gene: Phrampa_198 Start: 141698, Stop: 141910, Start Num: 15

Candidate Starts for Phrampa_198:

(Start: 15 @141698 has 4 MA's), (24, 141740), (29, 141761), (38, 141848),

Gene: Rabbitrun_73 Start: 44915, Stop: 45124, Start Num: 15

Candidate Starts for Rabbitrun_73:

(Start: 15 @44915 has 4 MA's), (18, 44927), (24, 44957), (34, 45020), (37, 45065),

Gene: Rey_5 Start: 2370, Stop: 2203, Start Num: 27

Candidate Starts for Rey_5:

(10, 2466), (Start: 14 @2424 has 4 MA's), (Start: 19 @2403 has 1 MA's), (Start: 27 @2370 has 1 MA's), (28, 2358), (32, 2322), (34, 2310),

Gene: Rockabye_208 Start: 136558, Stop: 136761, Start Num: 15

Candidate Starts for Rockabye_208:

(Start: 15 @136558 has 4 MA's),

Gene: SJReid_210 Start: 135453, Stop: 135656, Start Num: 15

Candidate Starts for SJReid_210:

(Start: 15 @135453 has 4 MA's), (24, 135489), (33, 135549), (38, 135600),

Gene: Sheng711_91 Start: 57040, Stop: 57252, Start Num: 14

Candidate Starts for Sheng711_91:

(13, 57034), (Start: 14 @57040 has 4 MA's), (22, 57067), (23, 57070), (25, 57085), (39, 57205),

Gene: SpeedDemon_1180 Start: 76063, Stop: 76290, Start Num: 12

Candidate Starts for SpeedDemon_1180:

(Start: 12 @76063 has 3 MA's), (Start: 20 @76102 has 1 MA's), (42, 76261),

Gene: Towmatter_111 Start: 70068, Stop: 70304, Start Num: 12

Candidate Starts for Towmatter_111:

(Start: 12 @70068 has 3 MA's), (16, 70092), (35, 70206), (41, 70272), (42, 70275),

Gene: Trax_73 Start: 45629, Stop: 45832, Start Num: 15

Candidate Starts for Trax_73:

(Start: 15 @45629 has 4 MA's), (17, 45638), (18, 45641), (Start: 19 @45647 has 1 MA's), (Start: 20 @45650 has 1 MA's), (41, 45800), (42, 45803), (43, 45824),