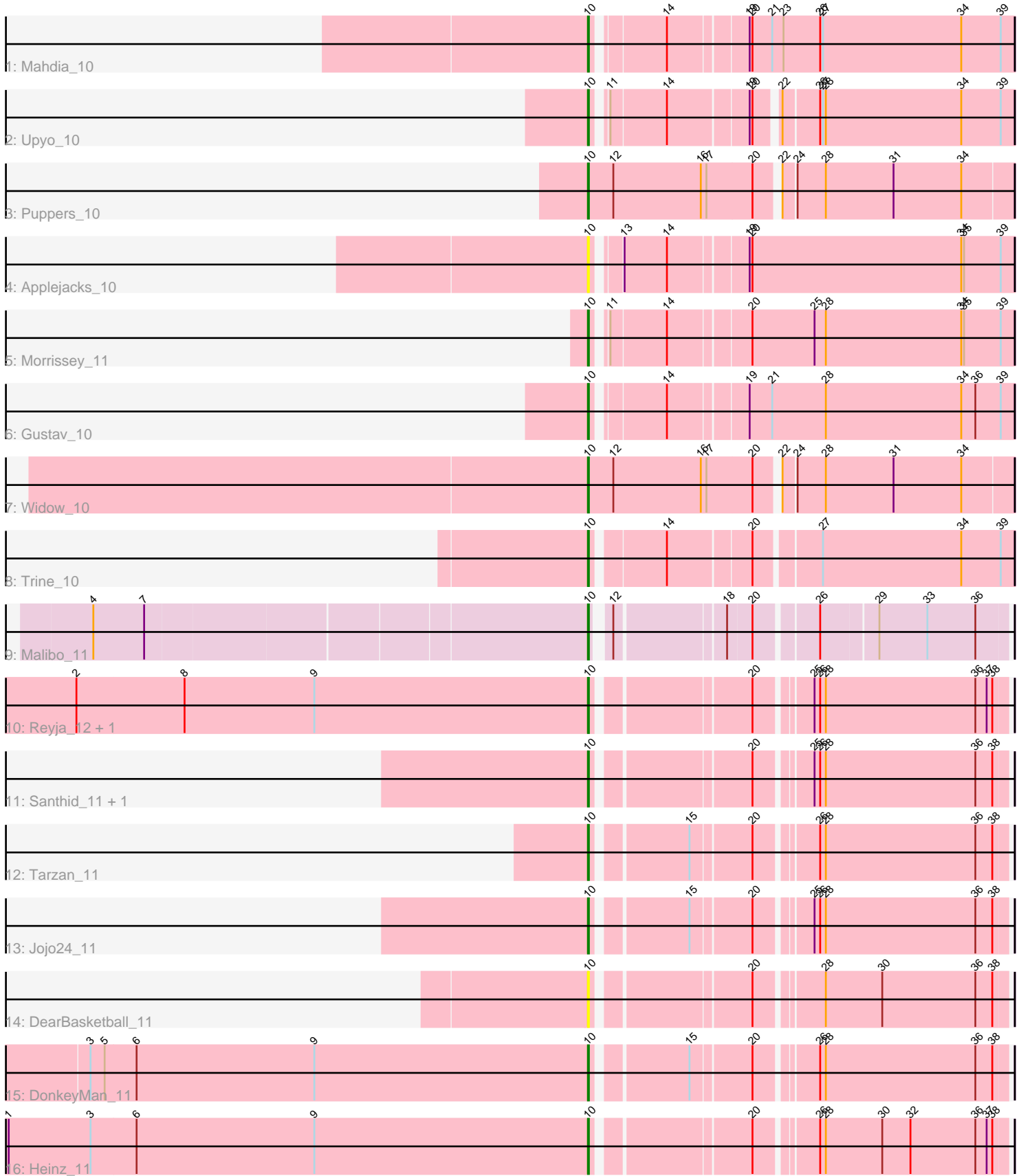


Pham 305361



Note: Tracks are now grouped by subcluster and scaled. Switching in subcluster is indicated by changes in track color. Track scale is now set by default to display the region 30 bp upstream of start 1 to 30 bp downstream of the last possible start. If this default region is judged to be packed too tightly with annotated starts, the track will be further scaled to only show that region of the ORF with annotated starts. This action will be indicated by adding "Zoomed" to the title. For starts, yellow indicates the location of called starts comprised solely of Glimmer/GeneMark auto-annotations, green indicates the location of called starts with at least 1 manual gene annotation.

## Pham 305361 Report

This analysis was run 06/08/26 on database version 649.

Pham number 305361 has 18 members, 3 are drafts.

Phages represented in each track:

- Track 1 : Mahdia\_10
- Track 2 : Upyo\_10
- Track 3 : Puppies\_10
- Track 4 : Applejacks\_10
- Track 5 : Morrissey\_11
- Track 6 : Gustav\_10
- Track 7 : Widow\_10
- Track 8 : Trine\_10
- Track 9 : Malibo\_11
- Track 10 : Reyja\_12, DinoNuggs\_12
- Track 11 : Santhid\_11, Hibiscus\_11
- Track 12 : Tarzan\_11
- Track 13 : Jojo24\_11
- Track 14 : DearBasketball\_11
- Track 15 : DonkeyMan\_11
- Track 16 : Heinz\_11

### ***Summary of Final Annotations (See graph section above for start numbers):***

The start number called the most often in the published annotations is 10, it was called in 15 of the 15 non-draft genes in the pham.

Genes that call this "Most Annotated" start:

- Applejacks\_10, DearBasketball\_11, DinoNuggs\_12, DonkeyMan\_11, Gustav\_10, Heinz\_11, Hibiscus\_11, Jojo24\_11, Mahdia\_10, Malibo\_11, Morrissey\_11, Puppies\_10, Reyja\_12, Santhid\_11, Tarzan\_11, Trine\_10, Upyo\_10, Widow\_10,

Genes that have the "Most Annotated" start but do not call it:

- 

Genes that do not have the "Most Annotated" start:

- 

**Summary by start number:**

Start 10:

- Found in 18 of 18 ( 100.0% ) of genes in pham
- Manual Annotations of this start: 15 of 15
- Called 100.0% of time when present
- Phage (with cluster) where this start called: Applejacks\_10 (CD), DearBasketball\_11 (DY), DinoNuggs\_12 (DY), DonkeyMan\_11 (DY), Gustav\_10 (CD), Heinz\_11 (DY), Hibiscus\_11 (DY), Jojo24\_11 (DY), Mahdia\_10 (CD), Malibo\_11 (DW), Morrissey\_11 (CD), Puppies\_10 (CD), Reyja\_12 (DY), Santhid\_11 (DY), Tarzan\_11 (DY), Trine\_10 (CD), Upyo\_10 (CD), Widow\_10 (CD),

### **Summary by clusters:**

There are 3 clusters represented in this pham: DW, DY, CD,

Info for manual annotations of cluster CD:

- Start number 10 was manually annotated 7 times for cluster CD.

Info for manual annotations of cluster DW:

- Start number 10 was manually annotated 1 time for cluster DW.

Info for manual annotations of cluster DY:

- Start number 10 was manually annotated 7 times for cluster DY.

### **Gene Information:**

Gene: Applejacks\_10 Start: 7102, Stop: 7527, Start Num: 10

Candidate Starts for Applejacks\_10:

(Start: 10 @7102 has 15 MA's), (13, 7123), (14, 7168), (19, 7246), (20, 7249), (34, 7471), (35, 7474), (39, 7513),

Gene: DearBasketball\_11 Start: 7430, Stop: 7834, Start Num: 10

Candidate Starts for DearBasketball\_11:

(Start: 10 @7430 has 15 MA's), (20, 7580), (28, 7643), (30, 7703), (36, 7802), (38, 7820),

Gene: DinoNuggs\_12 Start: 7576, Stop: 7980, Start Num: 10

Candidate Starts for DinoNuggs\_12:

(2, 7033), (8, 7147), (9, 7285), (Start: 10 @7576 has 15 MA's), (20, 7726), (25, 7777), (26, 7783), (28, 7789), (36, 7948), (37, 7960), (38, 7966),

Gene: DonkeyMan\_11 Start: 7427, Stop: 7831, Start Num: 10

Candidate Starts for DonkeyMan\_11:

(3, 6899), (5, 6914), (6, 6947), (9, 7136), (Start: 10 @7427 has 15 MA's), (15, 7517), (20, 7577), (26, 7634), (28, 7640), (36, 7799), (38, 7817),

Gene: Gustav\_10 Start: 7169, Stop: 7594, Start Num: 10

Candidate Starts for Gustav\_10:

(Start: 10 @7169 has 15 MA's), (14, 7235), (19, 7313), (21, 7337), (28, 7394), (34, 7538), (36, 7553), (39, 7580),

Gene: Heinz\_11 Start: 7463, Stop: 7867, Start Num: 10

Candidate Starts for Heinz\_11:

(1, 6851), (3, 6938), (6, 6986), (9, 7175), (Start: 10 @7463 has 15 MA's), (20, 7613), (26, 7670), (28, 7676), (30, 7736), (32, 7766), (36, 7835), (37, 7847), (38, 7853),

Gene: Hibiscus\_11 Start: 7440, Stop: 7844, Start Num: 10

Candidate Starts for Hibiscus\_11:

(Start: 10 @7440 has 15 MA's), (20, 7590), (25, 7641), (26, 7647), (28, 7653), (36, 7812), (38, 7830),

Gene: Jojo24\_11 Start: 7435, Stop: 7839, Start Num: 10

Candidate Starts for Jojo24\_11:

(Start: 10 @7435 has 15 MA's), (15, 7525), (20, 7585), (25, 7636), (26, 7642), (28, 7648), (36, 7807), (38, 7825),

Gene: Mahdia\_10 Start: 7171, Stop: 7596, Start Num: 10

Candidate Starts for Mahdia\_10:

(Start: 10 @7171 has 15 MA's), (14, 7237), (19, 7315), (20, 7318), (21, 7339), (23, 7351), (26, 7390), (27, 7393), (34, 7540), (39, 7582),

Gene: Malibo\_11 Start: 7740, Stop: 8135, Start Num: 10

Candidate Starts for Malibo\_11:

(4, 7233), (7, 7287), (Start: 10 @7740 has 15 MA's), (12, 7752), (18, 7860), (20, 7884), (26, 7944), (29, 8001), (33, 8052), (36, 8103),

Gene: Morrissey\_11 Start: 7567, Stop: 7992, Start Num: 10

Candidate Starts for Morrissey\_11:

(Start: 10 @7567 has 15 MA's), (11, 7576), (14, 7633), (20, 7714), (25, 7780), (28, 7792), (34, 7936), (35, 7939), (39, 7978),

Gene: Puppies\_10 Start: 7091, Stop: 7525, Start Num: 10

Candidate Starts for Puppies\_10:

(Start: 10 @7091 has 15 MA's), (12, 7118), (16, 7211), (17, 7217), (20, 7265), (22, 7286), (24, 7298), (28, 7328), (31, 7400), (34, 7472),

Gene: Reyja\_12 Start: 7576, Stop: 7980, Start Num: 10

Candidate Starts for Reyja\_12:

(2, 7033), (8, 7147), (9, 7285), (Start: 10 @7576 has 15 MA's), (20, 7726), (25, 7777), (26, 7783), (28, 7789), (36, 7948), (37, 7960), (38, 7966),

Gene: Santhid\_11 Start: 7444, Stop: 7848, Start Num: 10

Candidate Starts for Santhid\_11:

(Start: 10 @7444 has 15 MA's), (20, 7594), (25, 7645), (26, 7651), (28, 7657), (36, 7816), (38, 7834),

Gene: Tarzan\_11 Start: 7432, Stop: 7836, Start Num: 10

Candidate Starts for Tarzan\_11:

(Start: 10 @7432 has 15 MA's), (15, 7522), (20, 7582), (26, 7639), (28, 7645), (36, 7804), (38, 7822),

Gene: Trine\_10 Start: 7087, Stop: 7506, Start Num: 10

Candidate Starts for Trine\_10:

(Start: 10 @7087 has 15 MA's), (14, 7156), (20, 7240), (27, 7303), (34, 7450), (39, 7492),

Gene: Upyo\_10 Start: 7111, Stop: 7524, Start Num: 10

Candidate Starts for Upyo\_10:

(Start: 10 @7111 has 15 MA's), (11, 7120), (14, 7177), (19, 7258), (20, 7261), (22, 7282), (26, 7318), (27, 7321), (28, 7324), (34, 7468), (39, 7510),

Gene: Widow\_10 Start: 7082, Stop: 7516, Start Num: 10

Candidate Starts for Widow\_10:

(Start: 10 @7082 has 15 MA's), (12, 7109), (16, 7202), (17, 7208), (20, 7256), (22, 7277), (24, 7289), (28, 7319), (31, 7391), (34, 7463),