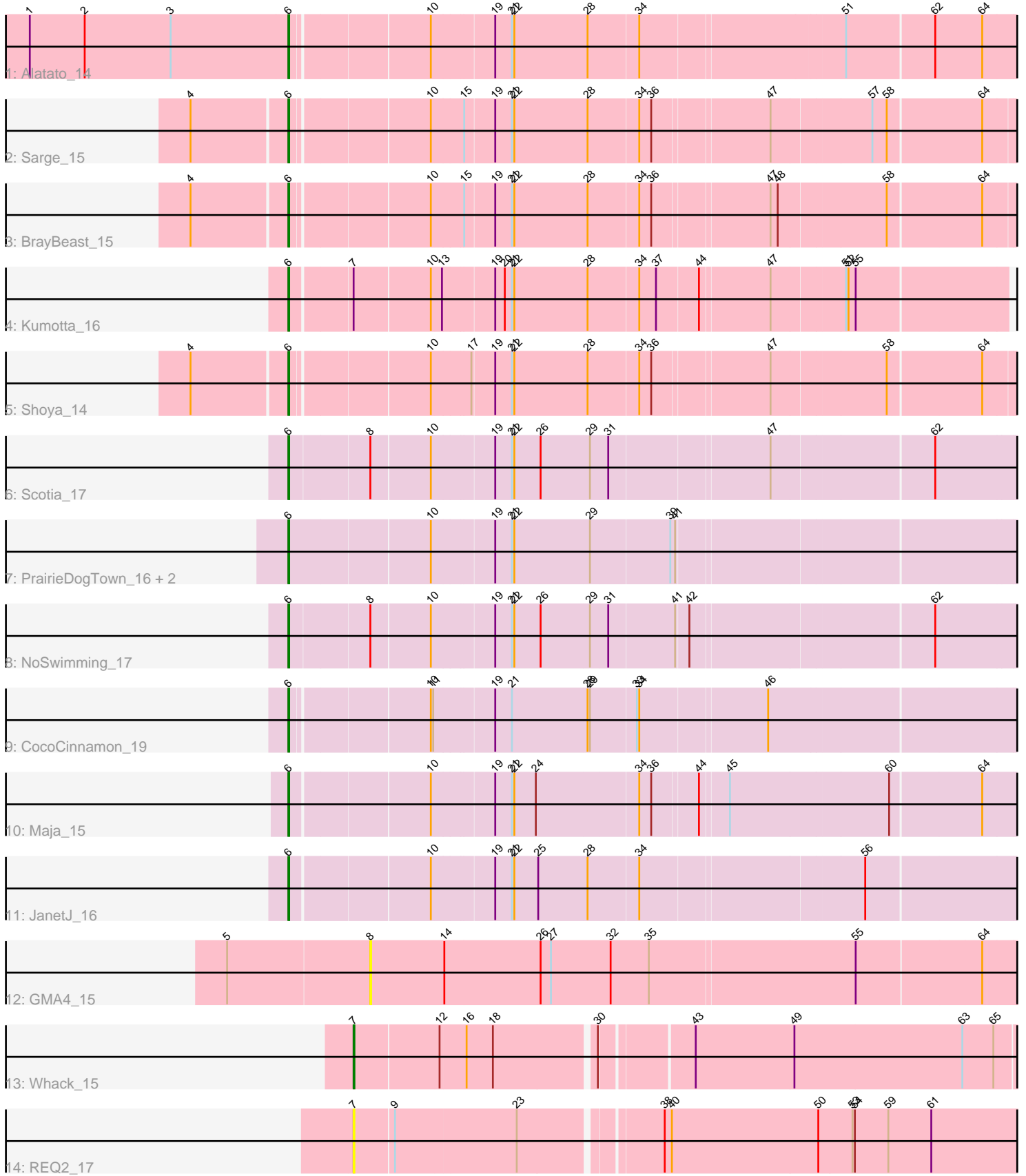


Pham 305384



Note: Tracks are now grouped by subcluster and scaled. Switching in subcluster is indicated by changes in track color. Track scale is now set by default to display the region 30 bp upstream of start 1 to 30 bp downstream of the last possible start. If this default region is judged to be packed too tightly with annotated starts, the track will be further scaled to only show that region of the ORF with annotated starts. This action will be indicated by adding "Zoomed" to the title. For starts, yellow indicates the location of called starts comprised solely of Glimmer/GeneMark auto-annotations, green indicates the location of called starts with at least 1 manual gene annotation.

## Pham 305384 Report

This analysis was run 06/08/26 on database version 649.

Pham number 305384 has 16 members, 2 are drafts.

Phages represented in each track:

- Track 1 : Alatato\_14
- Track 2 : Sarge\_15
- Track 3 : BrayBeast\_15
- Track 4 : Kumotta\_16
- Track 5 : Shoya\_14
- Track 6 : Scotia\_17
- Track 7 : PrairieDogTown\_16, Aoka\_16, EvenBluerMoon\_16
- Track 8 : NoSwimming\_17
- Track 9 : CocoCinnamon\_19
- Track 10 : Maja\_15
- Track 11 : JanetJ\_16
- Track 12 : GMA4\_15
- Track 13 : Whack\_15
- Track 14 : REQ2\_17

### ***Summary of Final Annotations (See graph section above for start numbers):***

The start number called the most often in the published annotations is 6, it was called in 13 of the 14 non-draft genes in the pham.

Genes that call this "Most Annotated" start:

- Alatato\_14, Aoka\_16, BrayBeast\_15, CocoCinnamon\_19, EvenBluerMoon\_16, JanetJ\_16, Kumotta\_16, Maja\_15, NoSwimming\_17, PrairieDogTown\_16, Sarge\_15, Scotia\_17, Shoya\_14,

Genes that have the "Most Annotated" start but do not call it:

- 

Genes that do not have the "Most Annotated" start:

- GMA4\_15, REQ2\_17, Whack\_15,

### **Summary by start number:**

Start 6:

- Found in 13 of 16 ( 81.2% ) of genes in pham
- Manual Annotations of this start: 13 of 14
- Called 100.0% of time when present
- Phage (with cluster) where this start called: Alata\_14 (FB), Aoka\_16 (FO), BrayBeast\_15 (FB), CocoCinnamon\_19 (FO), EvenBluerMoon\_16 (FO), JanetJ\_16 (FO), Kumotta\_16 (FB), Maja\_15 (FO), NoSwimming\_17 (FO), PrairieDogTown\_16 (FO), Sarge\_15 (FB), Scotia\_17 (FO), Shoya\_14 (FB),

Start 7:

- Found in 3 of 16 ( 18.8% ) of genes in pham
- Manual Annotations of this start: 1 of 14
- Called 66.7% of time when present
- Phage (with cluster) where this start called: REQ2\_17 (singleton), Whack\_15 (singleton),

Start 8:

- Found in 3 of 16 ( 18.8% ) of genes in pham
- No Manual Annotations of this start.
- Called 33.3% of time when present
- Phage (with cluster) where this start called: GMA4\_15 (singleton),

### Summary by clusters:

There are 3 clusters represented in this pham: FB, singleton, FO,

Info for manual annotations of cluster FB:

- Start number 6 was manually annotated 5 times for cluster FB.

Info for manual annotations of cluster FO:

- Start number 6 was manually annotated 8 times for cluster FO.

### Gene Information:

Gene: Alata\_14 Start: 8514, Stop: 9367, Start Num: 6

Candidate Starts for Alata\_14:

(1, 8190), (2, 8259), (3, 8367), (Start: 6 @8514 has 13 MA's), (10, 8676), (19, 8748), (21, 8769), (22, 8772), (28, 8862), (34, 8922), (51, 9165), (62, 9270), (64, 9327),

Gene: Aoka\_16 Start: 10072, Stop: 10934, Start Num: 6

Candidate Starts for Aoka\_16:

(Start: 6 @10072 has 13 MA's), (10, 10243), (19, 10315), (21, 10336), (22, 10339), (29, 10432), (39, 10528), (41, 10534),

Gene: BrayBeast\_15 Start: 8914, Stop: 9761, Start Num: 6

Candidate Starts for BrayBeast\_15:

(4, 8797), (Start: 6 @8914 has 13 MA's), (10, 9076), (15, 9112), (19, 9148), (21, 9169), (22, 9172), (28, 9262), (34, 9322), (36, 9337), (47, 9475), (48, 9484), (58, 9613), (64, 9724),

Gene: CocoCinnamon\_19 Start: 10261, Stop: 11117, Start Num: 6

Candidate Starts for CocoCinnamon\_19:

(Start: 6 @10261 has 13 MA's), (10, 10423), (11, 10426), (19, 10495), (21, 10516), (28, 10609), (29, 10612), (33, 10666), (34, 10669), (46, 10822),

Gene: EvenBluerMoon\_16 Start: 10107, Stop: 10969, Start Num: 6

Candidate Starts for EvenBluerMoon\_16:

(Start: 6 @10107 has 13 MA's), (10, 10278), (19, 10350), (21, 10371), (22, 10374), (29, 10467), (39, 10563), (41, 10569),

Gene: GMA4\_15 Start: 9946, Stop: 10748, Start Num: 8

Candidate Starts for GMA4\_15:

(5, 9769), (8, 9946), (14, 10039), (26, 10159), (27, 10171), (32, 10246), (35, 10294), (55, 10546), (64, 10699),

Gene: JanetJ\_16 Start: 9891, Stop: 10747, Start Num: 6

Candidate Starts for JanetJ\_16:

(Start: 6 @9891 has 13 MA's), (10, 10056), (19, 10128), (21, 10149), (22, 10152), (25, 10182), (28, 10242), (34, 10302), (56, 10569),

Gene: Kumotta\_16 Start: 9768, Stop: 10615, Start Num: 6

Candidate Starts for Kumotta\_16:

(Start: 6 @9768 has 13 MA's), (Start: 7 @9840 has 1 MA's), (10, 9933), (13, 9945), (19, 10005), (20, 10017), (21, 10026), (22, 10029), (28, 10119), (34, 10179), (37, 10200), (44, 10251), (47, 10335), (51, 10422), (52, 10425), (55, 10434),

Gene: Maja\_15 Start: 9389, Stop: 10245, Start Num: 6

Candidate Starts for Maja\_15:

(Start: 6 @9389 has 13 MA's), (10, 9554), (19, 9626), (21, 9647), (22, 9650), (24, 9677), (34, 9800), (36, 9815), (44, 9869), (45, 9902), (60, 10097), (64, 10205),

Gene: NoSwimming\_17 Start: 11047, Stop: 11906, Start Num: 6

Candidate Starts for NoSwimming\_17:

(Start: 6 @11047 has 13 MA's), (8, 11143), (10, 11215), (19, 11287), (21, 11308), (22, 11311), (26, 11344), (29, 11404), (31, 11425), (41, 11506), (42, 11521), (62, 11809),

Gene: PrairieDogTown\_16 Start: 10109, Stop: 10971, Start Num: 6

Candidate Starts for PrairieDogTown\_16:

(Start: 6 @10109 has 13 MA's), (10, 10280), (19, 10352), (21, 10373), (22, 10376), (29, 10469), (39, 10565), (41, 10571),

Gene: REQ2\_17 Start: 11626, Stop: 12441, Start Num: 7

Candidate Starts for REQ2\_17:

(Start: 7 @11626 has 1 MA's), (9, 11674), (23, 11821), (38, 11983), (40, 11992), (50, 12175), (53, 12217), (54, 12220), (59, 12262), (61, 12316),

Gene: Sarge\_15 Start: 8825, Stop: 9672, Start Num: 6

Candidate Starts for Sarge\_15:

(4, 8708), (Start: 6 @8825 has 13 MA's), (10, 8987), (15, 9023), (19, 9059), (21, 9080), (22, 9083), (28, 9173), (34, 9233), (36, 9248), (47, 9386), (57, 9506), (58, 9524), (64, 9635),

Gene: Scotia\_17 Start: 11047, Stop: 11906, Start Num: 6

Candidate Starts for Scotia\_17:

(Start: 6 @11047 has 13 MA's), (8, 11143), (10, 11215), (19, 11287), (21, 11308), (22, 11311), (26, 11344), (29, 11404), (31, 11425), (47, 11617), (62, 11809),

Gene: Shoya\_14 Start: 8461, Stop: 9308, Start Num: 6

Candidate Starts for Shoya\_14:

(4, 8344), (Start: 6 @8461 has 13 MA's), (10, 8623), (17, 8668), (19, 8695), (21, 8716), (22, 8719), (28, 8809), (34, 8869), (36, 8884), (47, 9022), (58, 9160), (64, 9271),

Gene: Whack\_15 Start: 9533, Stop: 10330, Start Num: 7

Candidate Starts for Whack\_15:

(Start: 7 @9533 has 1 MA's), (12, 9635), (16, 9665), (18, 9698), (30, 9818), (43, 9923), (49, 10046), (63, 10256), (65, 10295),