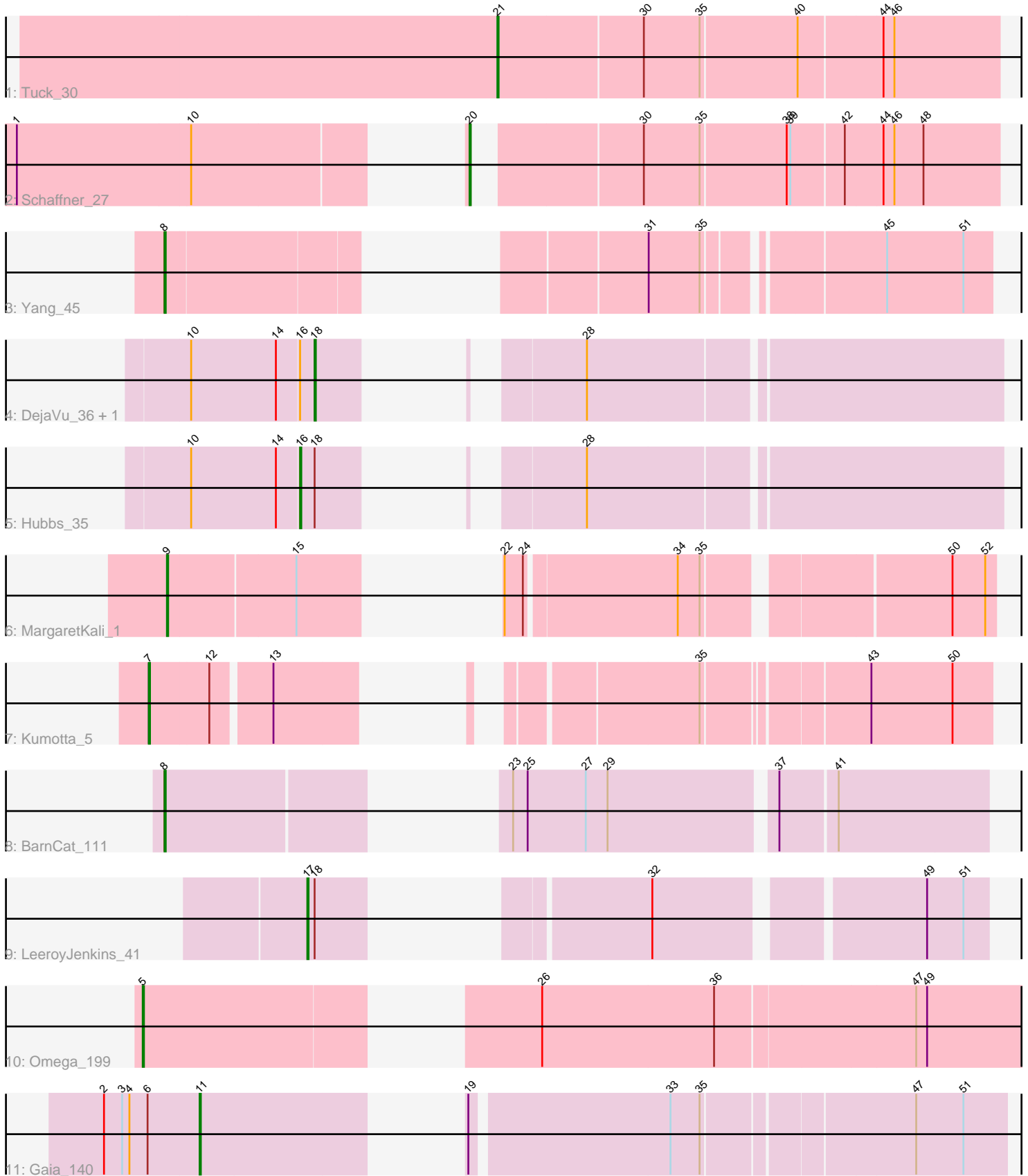


Pham 305445



Note: Tracks are now grouped by subcluster and scaled. Switching in subcluster is indicated by changes in track color. Track scale is now set by default to display the region 30 bp upstream of start 1 to 30 bp downstream of the last possible start. If this default region is judged to be packed too tightly with annotated starts, the track will be further scaled to only show that region of the ORF with annotated starts. This action will be indicated by adding "Zoomed" to the title. For starts, yellow indicates the location of called starts comprised solely of Glimmer/GeneMark auto-annotations, green indicates the location of called starts with at least 1 manual gene annotation.

## Pham 305445 Report

This analysis was run 06/08/26 on database version 649.

Pham number 305445 has 12 members, 0 are drafts.

Phages represented in each track:

- Track 1 : Tuck\_30
- Track 2 : Schaffner\_27
- Track 3 : Yang\_45
- Track 4 : DejaVu\_36, Roman\_35
- Track 5 : Hubbs\_35
- Track 6 : MargaretKali\_1
- Track 7 : Kumotta\_5
- Track 8 : BarnCat\_111
- Track 9 : LeeroyJenkins\_41
- Track 10 : Omega\_199
- Track 11 : Gaia\_140

### ***Summary of Final Annotations (See graph section above for start numbers):***

The start number called the most often in the published annotations is 8, it was called in 2 of the 12 non-draft genes in the pham.

Genes that call this "Most Annotated" start:

- BarnCat\_111, Yang\_45,

Genes that have the "Most Annotated" start but do not call it:

- 

Genes that do not have the "Most Annotated" start:

- DejaVu\_36, Gaia\_140, Hubbs\_35, Kumotta\_5, LeeroyJenkins\_41, MargaretKali\_1, Omega\_199, Roman\_35, Schaffner\_27, Tuck\_30,

### **Summary by start number:**

Start 5:

- Found in 1 of 12 ( 8.3% ) of genes in pham
- Manual Annotations of this start: 1 of 12
- Called 100.0% of time when present
- Phage (with cluster) where this start called: Omega\_199 (J),

Start 7:

- Found in 1 of 12 ( 8.3% ) of genes in pham
- Manual Annotations of this start: 1 of 12
- Called 100.0% of time when present
- Phage (with cluster) where this start called: Kumotta\_5 (FB),

Start 8:

- Found in 2 of 12 ( 16.7% ) of genes in pham
- Manual Annotations of this start: 2 of 12
- Called 100.0% of time when present
- Phage (with cluster) where this start called: BarnCat\_111 (GB), Yang\_45 (AZ1),

Start 9:

- Found in 1 of 12 ( 8.3% ) of genes in pham
- Manual Annotations of this start: 1 of 12
- Called 100.0% of time when present
- Phage (with cluster) where this start called: MargaretKali\_1 (FB),

Start 11:

- Found in 1 of 12 ( 8.3% ) of genes in pham
- Manual Annotations of this start: 1 of 12
- Called 100.0% of time when present
- Phage (with cluster) where this start called: Gaia\_140 (X),

Start 16:

- Found in 3 of 12 ( 25.0% ) of genes in pham
- Manual Annotations of this start: 1 of 12
- Called 33.3% of time when present
- Phage (with cluster) where this start called: Hubbs\_35 (ED1),

Start 17:

- Found in 1 of 12 ( 8.3% ) of genes in pham
- Manual Annotations of this start: 1 of 12
- Called 100.0% of time when present
- Phage (with cluster) where this start called: LeeroyJenkins\_41 (GB),

Start 18:

- Found in 4 of 12 ( 33.3% ) of genes in pham
- Manual Annotations of this start: 2 of 12
- Called 50.0% of time when present
- Phage (with cluster) where this start called: DejaVu\_36 (ED1), Roman\_35 (ED1),

Start 20:

- Found in 1 of 12 ( 8.3% ) of genes in pham
- Manual Annotations of this start: 1 of 12
- Called 100.0% of time when present
- Phage (with cluster) where this start called: Schaffner\_27 (AZ1),

Start 21:

- Found in 1 of 12 ( 8.3% ) of genes in pham
- Manual Annotations of this start: 1 of 12
- Called 100.0% of time when present

- Phage (with cluster) where this start called: Tuck\_30 (AZ1),

### **Summary by clusters:**

There are 6 clusters represented in this pham: J, FB, ED1, GB, AZ1, X,

Info for manual annotations of cluster AZ1:

- Start number 8 was manually annotated 1 time for cluster AZ1.
- Start number 20 was manually annotated 1 time for cluster AZ1.
- Start number 21 was manually annotated 1 time for cluster AZ1.

Info for manual annotations of cluster ED1:

- Start number 16 was manually annotated 1 time for cluster ED1.
- Start number 18 was manually annotated 2 times for cluster ED1.

Info for manual annotations of cluster FB:

- Start number 7 was manually annotated 1 time for cluster FB.
- Start number 9 was manually annotated 1 time for cluster FB.

Info for manual annotations of cluster GB:

- Start number 8 was manually annotated 1 time for cluster GB.
- Start number 17 was manually annotated 1 time for cluster GB.

Info for manual annotations of cluster J:

- Start number 5 was manually annotated 1 time for cluster J.

Info for manual annotations of cluster X:

- Start number 11 was manually annotated 1 time for cluster X.

### **Gene Information:**

Gene: BarnCat\_111 Start: 57019, Stop: 57567, Start Num: 8

Candidate Starts for BarnCat\_111:

(Start: 8 @57019 has 2 MA's), (23, 57193), (25, 57205), (27, 57253), (29, 57271), (37, 57400), (41, 57445),

Gene: DejaVu\_36 Start: 15500, Stop: 15066, Start Num: 18

Candidate Starts for DejaVu\_36:

(10, 15599), (14, 15530), (Start: 16 @15512 has 1 MA's), (Start: 18 @15500 has 2 MA's), (28, 15392),

Gene: Gaia\_140 Start: 75742, Stop: 76296, Start Num: 11

Candidate Starts for Gaia\_140:

(2, 75664), (3, 75679), (4, 75685), (6, 75700), (Start: 11 @75742 has 1 MA's), (19, 75880), (33, 76036), (35, 76060), (47, 76222), (51, 76261),

Gene: Hubbs\_35 Start: 15724, Stop: 15278, Start Num: 16

Candidate Starts for Hubbs\_35:

(10, 15811), (14, 15742), (Start: 16 @15724 has 1 MA's), (Start: 18 @15712 has 2 MA's), (28, 15604),

Gene: Kumotta\_5 Start: 4506, Stop: 5042, Start Num: 7

Candidate Starts for Kumotta\_5:

(Start: 7 @4506 has 1 MA's), (12, 4554), (13, 4599), (35, 4821), (43, 4944), (50, 5010),

Gene: LeeroyJenkins\_41 Start: 21889, Stop: 21473, Start Num: 17

Candidate Starts for LeeroyJenkins\_41:

(Start: 17 @21889 has 1 MA's), (Start: 18 @21883 has 2 MA's), (32, 21724), (49, 21523), (51, 21493),

Gene: MargaretKali\_1 Start: 50, Stop: 577, Start Num: 9

Candidate Starts for MargaretKali\_1:

(Start: 9 @50 has 1 MA's), (15, 152), (22, 206), (24, 221), (34, 341), (35, 359), (50, 542), (52, 569),

Gene: Omega\_199 Start: 97671, Stop: 98360, Start Num: 5

Candidate Starts for Omega\_199:

(Start: 5 @97671 has 1 MA's), (26, 97917), (36, 98058), (47, 98217), (49, 98226),

Gene: Roman\_35 Start: 15559, Stop: 15125, Start Num: 18

Candidate Starts for Roman\_35:

(10, 15658), (14, 15589), (Start: 16 @15571 has 1 MA's), (Start: 18 @15559 has 2 MA's), (28, 15451),

Gene: Schaffner\_27 Start: 23138, Stop: 23539, Start Num: 20

Candidate Starts for Schaffner\_27:

(1, 22853), (10, 22994), (Start: 20 @23138 has 1 MA's), (30, 23255), (35, 23300), (38, 23369), (39, 23372), (42, 23414), (44, 23444), (46, 23453), (48, 23477),

Gene: Tuck\_30 Start: 24609, Stop: 25010, Start Num: 21

Candidate Starts for Tuck\_30:

(Start: 21 @24609 has 1 MA's), (30, 24726), (35, 24771), (40, 24849), (44, 24915), (46, 24924),

Gene: Yang\_45 Start: 32671, Stop: 33198, Start Num: 8

Candidate Starts for Yang\_45:

(Start: 8 @32671 has 2 MA's), (31, 32941), (35, 32983), (45, 33112), (51, 33175),