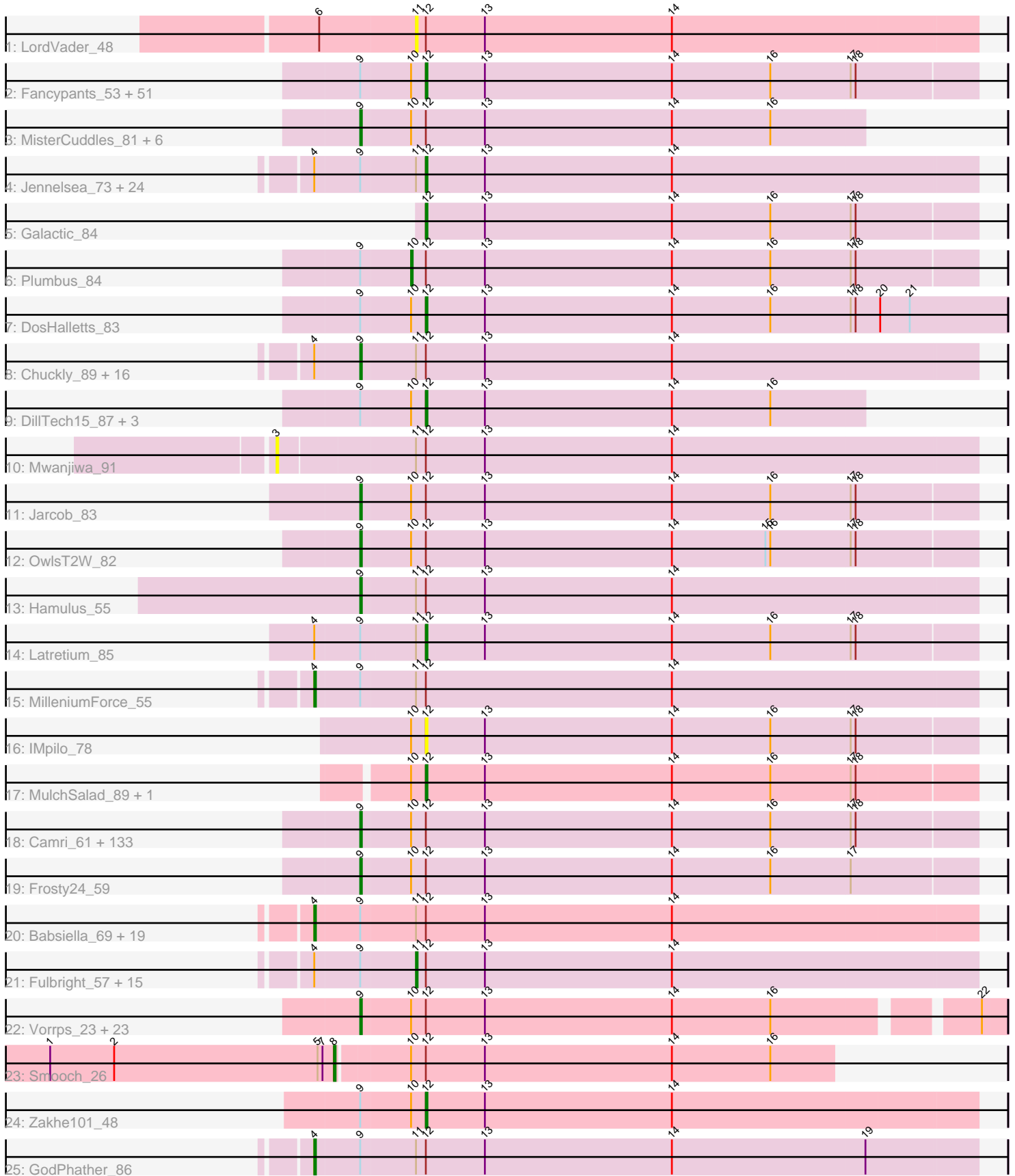


Pham 306057



Note: Tracks are now grouped by subcluster and scaled. Switching in subcluster is indicated by changes in track color. Track scale is now set by default to display the region 30 bp upstream of start 1 to 30 bp downstream of the last possible start. If this default region is judged to be packed too tightly with annotated starts, the track will be further scaled to only show that region of the ORF with annotated starts. This action will be indicated by adding "Zoomed" to the title. For starts, yellow indicates the location of called starts comprised solely of Glimmer/GeneMark auto-annotations, green indicates the location of called starts with at least 1 manual gene annotation.

Pham 306057 Report

This analysis was run 06/27/26 on database version 652.

Pham number 306057 has 316 members, 25 are drafts.

Phages represented in each track:

- Track 1 : LordVader_48
- Track 2 : Fancypants_53, MulchExplorer_82, MadMen_81, PatoPoderoso_76, BuzzLyseyear_83, DirtMcgirt_82, AlpineSix_84, Beanstalk_82, Priscilla_78, AuntGwenStacy_51, Crumble_78, XFactor_78, Peridot_87, Seagreen_82, KingJulian_82, ThetaBob_82, Blexus_78, Quico_89, Oksu_84, Misha28_60, RockyHorror_81, BobaPhett_83, DeadP_84, Corium_76, Medindi_87, Doomslug_96, Phasih_76, Lizziana_85, Che8_89, Mattes_81, Spoonbill_79, IbOuu_78, Fastidio_85, Enzomatic_94, Scitech_53, Philus_86, Lucia_82, MilanaBonita_73, Aloeri_63, Nichirin_78, QuickMath_82, Vivum_83, Violac_85, DRBy19_87, PMC_80, Jant_90, SeaLumen_90, Faiyaz_51, TootsiePop_60, Polo2Bam_93, Modragons_82, LittleShirley_89
- Track 3 : MisterCuddles_81, Girr_80, Doug_80, Ruby_78, Veteran_75, Corndog_25, Emma_87
- Track 4 : Jennelsea_73, Carcharodon_59, Velveteen_78, Clank_38, Frankie_77, Brookers_79, Hotshotbaby7_53, Plagueis_53, Aggie_55, Demsculpinboyz_45, Parmesanjohn_59, Tessdabest_59, Mowgli_53, Venti_74, Melissauren88_84, ShowerHandel_93, Fruitloop_71, Melville_64, Smurph_59, Duplicity_57, Beakin_86, Martik_91, Ovechkin_51, RonRayGun_35, Ibrahim_35
- Track 5 : Galactic_84
- Track 6 : Plumbus_84
- Track 7 : DosHalletts_83
- Track 8 : Chuckly_89, Halo_56, Mahavrat_84, Sandalphon_88, Gomashi_57, Polkaroo_75, PinkYoshi_58, Jolene_56, Coleslaw_45, BronnyJr_67, Zizzle_81, ArcusAngelus_39, BQuat_45, Juniper1_83, Marmie_53, Neoh_45, TinaBug_56
- Track 9 : DillTech15_87, SiSi_79, Mantra_80, YungJamal_25
- Track 10 : Mwanjiwa_91
- Track 11 : Jacob_83
- Track 12 : OwlsT2W_82
- Track 13 : Hamulus_55
- Track 14 : Latretium_85
- Track 15 : MilleniumForce_55
- Track 16 : IMpilo_78
- Track 17 : MulchSalad_89, Yorick_76
- Track 18 : Camri_61, Eradicator_74, Awesomesauce_62, LouisV14_60, PhesterPhotato_87, Llama_84, Totinger_85, Byougenkin_80, Phalconet_80, Yoshi_101, Drago_80, Mandlovu_78, BlueCrab_81, Avrafan_57, Wendigo_58, GUmbie_74, LunaBlu_87, Royals2015_88, Sizemore_59, Whouxphf_78, Kasen3_59,

Hlubikazi_78, Seabastian_85, Taj_90, Periodt_54, VRedHorse_82, Flathead_83, Hilltopfarm_93, CaptainTrips_86, MZKinsey_59, Zombie_57, ECartman_53, Phish_55, ShiLan_83, Beakin_76, Hope_57, Kareem_59, Boomer_87, Typha_50, BPs_58, BruceB_58, Piper2020_63, Burwell21_78, Argie_66, FreddyB_91, Llij_79, Brujita_51, Clifton_76, NormanBulbieJr_76, James_84, Ardmore_69, Lorde_83, Phatniss_80, Taptic_68, Island3_51, Sweets_58, DingDing_58, OlympiaSaint_83, JorRay_58, PopTart_75, Saal_79, DocMcStuffins_62, Slim_85, PR_69, Alexphander_80, Phreak_53, DoRead_83, Enby_84, Eish_86, Kimberlium_84, Zerg_78, ChickenDinner_62, Gorge_82, DMoney_57, Darionha_55, DLane_84, Crespo_55, Moonbeam_81, Remy19_56, Leozinho_81, Pacc40_75, Harley_82, ShaboiShabazz_55, Rockne_84, Pippy_78, UncleRicky_82, Girafales_89, ZoMa_57, Cepens_68, Ochi17_83, Emmaloid_85, Akhila_74, D12_68, Starcevich_83, Phanphagia_82, Koella_71, LilMoolah_84, Jane_59, Rialto_87, Peeb_54, Nivrat_82, Hades_83, OfUltron_85, NewHope4_87, CassieYates_56, Brocalys_73, Sabbb_85, Chewbacca_59, SwagPiggett_84, SassyB_75, TomBrady_56, MinionDave_82, Gandalph_81, Tortoise12_56, Ogopogo_52, OctaviousRex_57, Cabrinians_80, Cedasite_56, Dante_81, Wee_89, LastJedi_73, Tweety_84, AzulaCat_58, Strokeseat_78, Kersh_85, Rita_90, Jinglebell_84, ZenTime222_54, Maliketh_56, Juice456_80, Cornucopia_83, GigiOuiOui_77, Florinda_92, Mova_82

- Track 19 : Frosty24_59
- Track 20 : Babsiella_69, Jonghyun_51, Gideon_47, Chevrolet_41, Aroostook_53, EleanorGeorge_97, Silvy_55, ByChance_83, Annihilator_57, Grimmer_98, SilverChicken_47, Ruriko_53, TDanisky_62, Minnie_87, Sparkdehlily_62, Avani_41, Xula_65, Bora_45, Chance64_53, QueenHazel_64
- Track 21 : Fulbright_57, Olga_59, Cerasum_78, Coco12_81, BigPhil_77, Phloss_57, Sarma624_83, Schnauzer_60, Cheesepuff_48, Pipsqueaks_60, Xerxes_59, Kingsley_88, Bartholomew_72, Gex_60, Philonius_59, Silvafighter_60
- Track 22 : Vorrps_23, Ryadel_25, Ashwin_24, Zebo_22, NiebruSaylor_23, Murai_23, Familton_23, Mori_23, Wildflower_23, MadKillah_24, Idergollasper_22, Catdawg_22, FoulBall_22, SchoolBus_22, Shida_23, Winget_23, Schuy_24, JangDynasty_22, Alkhayr_23, Vagabond_23, KingPhillip3_22, Firecracker_23, Krili_23, Blessica_23
- Track 23 : Smooch_26
- Track 24 : Zakhe101_48
- Track 25 : GodPhather_86

Summary of Final Annotations (See graph section above for start numbers):

The start number called the most often in the published annotations is 9, it was called in 183 of the 291 non-draft genes in the pham.

Genes that call this "Most Annotated" start:

- Akhila_74, Alexphander_80, Alkhayr_23, ArcusAngelus_39, Ardmore_69, Argie_66, Ashwin_24, Avrafan_57, Awesomesauce_62, AzulaCat_58, BPs_58, BQuat_45, Beakin_76, Blessica_23, BlueCrab_81, Boomer_87, Brocalys_73, BronnyJr_67, BruceB_58, Brujita_51, Burwell21_78, Byougenkin_80, Cabrinians_80, Camri_61, CaptainTrips_86, CassieYates_56, Catdawg_22, Cedasite_56, Cepens_68, Chewbacca_59, ChickenDinner_62, Chuckly_89, Clifton_76, Coleslaw_45, Corndog_25, Cornucopia_83, Crespo_55, D12_68, DLane_84, DMoney_57, Dante_81, Darionha_55, DingDing_58, DoRead_83, DocMcStuffins_62, Doug_80,

Drago_80, ECartman_53, Eish_86, Emma_87, Emmaloid_85, Enby_84, Eradicator_74, Familton_23, Firecracker_23, Flathead_83, Florinda_92, FoulBall_22, FreddyB_91, Frosty24_59, GUmbie_74, Gandolph_81, GigiOuiOui_77, Girafales_89, Girr_80, Gomashi_57, Gorge_82, Hades_83, Halo_56, Hamulus_55, Harley_82, Hilltopfarm_93, Hlubikazi_78, Hope_57, Idergollasper_22, Island3_51, James_84, Jane_59, JangDynasty_22, Jarcob_83, Jinglebell_84, Jolene_56, JorRay_58, Juice456_80, Juniper1_83, Kareem_59, Kasen3_59, Kersh_85, Kimberlium_84, KingPhillip3_22, Koella_71, Krili_23, LastJedi_73, Leozinho_81, LilMoolah_84, Llama_84, Llij_79, Lorde_83, LouisV14_60, LunaBlu_87, MZKinsey_59, MadKillah_24, Mahavrat_84, Maliketh_56, Mandlovu_78, Marmie_53, MinionDave_82, MisterCuddles_81, Moonbeam_81, Mori_23, Mova_82, Murai_23, Neoh_45, NewHope4_87, NiebruSaylor_23, Nivrat_82, NormanBulbieJr_76, Ochi17_83, OctaviousRex_57, OfUltron_85, Ogopogo_52, OlympiaSaint_83, OwlsT2W_82, PR_69, Pacc40_75, Peeb_54, Periodt_54, Phalconet_80, Phanphagia_82, Phatniss_80, PhesterPhotato_87, Phish_55, Phreak_53, PinkYoshi_58, Piper2020_63, Pippy_78, Polkaroo_75, PopTart_75, Remy19_56, Rialto_87, Rita_90, Rockne_84, Royals2015_88, Ruby_78, Ryadel_25, Saal_79, Sabbb_85, Sandalphon_88, SassyB_75, SchoolBus_22, Schuy_24, Seabastian_85, ShaboiShabazz_55, ShiLan_83, Shida_23, Sizemore_59, Slim_85, Starceвич_83, Strokeseat_78, SwagPiggett_84, Sweets_58, Taj_90, Taptic_68, TinaBug_56, TomBrady_56, Tortoise12_56, Totinger_85, Tweety_84, Typha_50, UncleRicky_82, VRedHorse_82, Vagabond_23, Veteran_75, Vorrrps_23, Wee_89, Wendigo_58, Whouxphf_78, Wildflower_23, Winget_23, Yoshi_101, Zebo_22, ZenTime222_54, Zerg_78, Zizzle_81, ZoMa_57, Zombie_57,

Genes that have the "Most Annotated" start but do not call it:

- Aggie_55, Aloeri_63, AlpineSix_84, Annihilator_57, Aroostook_53, AuntGwenStacy_51, Avani_41, Babsiella_69, Bartholomew_72, Beakin_86, Beanstalk_82, BigPhil_77, Blexus_78, BobaPhett_83, Bora_45, Brookers_79, BuzzLyseyear_83, ByChance_83, Carcharodon_59, Cerasum_78, Chance64_53, Che8_89, CheesePuff_48, Chevrolet_41, Clank_38, Coco12_81, Corium_76, Crumble_78, DRBy19_87, DeadP_84, Demsculpinboyz_45, DillTech15_87, DirtMcgirt_82, Doomslug_96, DosHalletts_83, Duplicity_57, EleanorGeorge_97, Enzomatic_94, Faiyaz_51, Fancypants_53, Fastidio_85, Frankie_77, Fruitloop_71, Fulbright_57, Gex_60, Gideon_47, GodPhather_86, Grimmer_98, Hotshotbaby7_53, IbOuu_78, Ibrahim_35, Jant_90, Jennelsea_73, Jonghyun_51, KingJulian_82, Kingsley_88, Latretium_85, LittleShirley_89, Lizziana_85, Lucia_82, MadMen_81, Mantra_80, Martik_91, Mattes_81, Medindi_87, Melissauren88_84, Melville_64, MilanaBonita_73, MilleniumForce_55, Minnie_87, Misha28_60, Modragons_82, Mowgli_53, MulchExplorer_82, Nichirin_78, Oksu_84, Olga_59, Ovechkin_51, PMC_80, Parmesanjohn_59, PatoPoderoso_76, Peridot_87, Phasih_76, Philonius_59, Philus_86, Phloss_57, Pipsqueaks_60, Plagueis_53, Plumbus_84, Polo2Bam_93, Priscilla_78, QueenHazel_64, QuickMath_82, Quico_89, RockyHorror_81, RonRayGun_35, Ruriko_53, Sarma624_83, Schnauzer_60, Scitech_53, SeaLumen_90, Seagreen_82, ShowerHandel_93, SiSi_79, Silvafighter_60, SilverChicken_47, Silvy_55, Smurph_59, Sparkdehilly_62, Spoonbill_79, TDanisky_62, Tessdabest_59, ThetaBob_82, TootsiePop_60, Velveteen_78, Venti_74, Violac_85, Vivum_83, XFactor_78, Xerxes_59, Xula_65, YungJamal_25, Zakhe101_48,

Genes that do not have the "Most Annotated" start:

- Galactic_84, IMpilo_78, LordVader_48, MulchSalad_89, Mwanjiwa_91, Smooch_26, Yorick_76,

Summary by start number:

Start 3:

- Found in 1 of 316 (0.3%) of genes in pham
- No Manual Annotations of this start.
- Called 100.0% of time when present
- Phage (with cluster) where this start called: Mwanjiwa_91 (F1),

Start 4:

- Found in 81 of 316 (25.6%) of genes in pham
- Manual Annotations of this start: 20 of 291
- Called 27.2% of time when present
- Phage (with cluster) where this start called: Annihilator_57 (G1), Aroostook_53 (G1), Avani_41 (F2), Babsiella_69 (I1), Bora_45 (O), ByChance_83 (F1), Chance64_53 (G1), Chevrolet_41 (F1), EleanorGeorge_97 (F1), Gideon_47 (G1), GodPhather_86 (W), Grimmer_98 (F1), Jonghyun_51 (G1), MilleniumForce_55 (F1), Minnie_87 (F1), QueenHazel_64 (I1), Ruriko_53 (G1), SilverChicken_47 (F2), Silvy_55 (N), Sparkdehlily_62 (F1), TDanisky_62 (F1), Xula_65 (I1),

Start 8:

- Found in 1 of 316 (0.3%) of genes in pham
- Manual Annotations of this start: 1 of 291
- Called 100.0% of time when present
- Phage (with cluster) where this start called: Smooch_26 (O),

Start 9:

- Found in 309 of 316 (97.8%) of genes in pham
- Manual Annotations of this start: 183 of 291
- Called 60.2% of time when present
- Phage (with cluster) where this start called: Akhila_74 (F1), Alexphander_80 (F1), Alkhayr_23 (O), ArcusAngelus_39 (F1), Ardmore_69 (F1), Argie_66 (W), Ashwin_24 (O), Avrafan_57 (G1), Awesomesauce_62 (F1), AzulaCat_58 (G1), BPs_58 (G1), BQuat_45 (G1), Beakin_76 (F1), Blessica_23 (O), BlueCrab_81 (F1), Boomer_87 (F1), Brocalys_73 (F1), BronnyJr_67 (P1), BruceB_58 (G1), Brujita_51 (I1), Burwell21_78 (F1), Byougenkin_80 (F1), Cabrinians_80 (F1), Camri_61 (G1), CaptainTrips_86 (F1), CassieYates_56 (G1), Catdawg_22 (O), Cedasite_56 (G1), Cepens_68 (W), Chewbacca_59 (N), ChickenDinner_62 (F1), Chuckly_89 (F1), Clifton_76 (F1), Coleslaw_45 (G1), Corndog_25 (O), Cornucopia_83 (F1), Crespo_55 (G1), D12_68 (W), DLane_84 (F1), DMoney_57 (G1), Dante_81 (F1), Darionha_55 (G1), DingDing_58 (G1), DoRead_83 (F1), DocMcStuffins_62 (F1), Doug_80 (F1), Drago_80 (F1), ECartman_53 (G1), Eish_86 (F1), Emma_87 (F1), Emmaloid_85 (F1), Enby_84 (F1), Eradicator_74 (F1), Familton_23 (O), Firecracker_23 (O), Flathead_83 (F1), Florinda_92 (F1), FoulBall_22 (O), FreddyB_91 (F1), Frosty24_59 (G1), GUmbe_74 (F1), Gandalph_81 (F1), GigiOuiOui_77 (F1), Girafales_89 (F1), Girr_80 (F1), Gomashi_57 (G1), Gorge_82 (F1), Hades_83 (F1), Halo_56 (G1), Hamulus_55 (F1), Harley_82 (F1), Hilltopfarm_93 (Y), Hlubikazi_78 (F1), Hope_57 (G1), Idergollasper_22 (O), Island3_51 (I1), James_84 (F1), Jane_59 (G1), JangDynasty_22 (O), Jacob_83 (F1), Jinglebell_84 (F1), Jolene_56 (G1), JorRay_58 (G1), Juice456_80 (F1), Juniper1_83 (F1), Kareem_59 (G1), Kasen3_59 (G1), Kersh_85 (F1), Kimberlium_84 (F1), KingPhillip3_22 (O), Koella_71 (F1), Krili_23 (O), LastJedi_73 (F1), Leozinho_81 (F1), LilMoolah_84 (F1), Llama_84 (F1), Llij_79 (F1), Lorde_83 (F1), LouisV14_60 (G1), LunaBlu_87 (F1), MZKinsey_59 (G1),

MadKillah_24 (O), Mahavrat_84 (F1), Maliketh_56 (G1), Mandlovu_78 (F1), Marmie_53 (G1), MinionDave_82 (F1), MisterCuddles_81 (F1), Moonbeam_81 (F1), Mori_23 (O), Mova_82 (F1), Murai_23 (O), Neoh_45 (G), NewHope4_87 (F1), NiebruSaylor_23 (O), Nivrat_82 (F1), NormanBulbieJr_76 (F1), Ochi17_83 (F1), OctaviousRex_57 (G1), OfUltron_85 (F1), Ogopogo_52 (F1), OlympiaSaint_83 (F1), OwlsT2W_82 (F1), PR_69 (W), Pacc40_75 (F1), Peeb_54 (G1), Periodt_54 (G1), Phalconet_80 (F1), Phanphagia_82 (F1), Phatniss_80 (F1), PhesterPhotato_87 (F1), Phish_55 (G1), Phreak_53 (G1), PinkYoshi_58 (G1), Piper2020_63 (F1), Pippy_78 (F1), Polkaroo_75 (P1), PopTart_75 (F1), Remy19_56 (G1), Rialto_87 (F1), Rita_90 (F1), Rockne_84 (F1), Royals2015_88 (F1), Ruby_78 (F1), Ryadel_25 (O), Saal_79 (F1), Sabb_85 (F1), Sandalphon_88 (F1), SassyB_75 (F1), SchoolBus_22 (O), Schuy_24 (O), Sebastian_85 (F1), ShaboiShabazz_55 (G1), ShiLan_83 (F1), Shida_23 (O), Sizemore_59 (G1), Slim_85 (F1), Starcevic_83 (F1), Strokeseat_78 (F1), SwagPiggett_84 (F1), Sweets_58 (G1), Taj_90 (F1), Taptic_68 (W), TinaBug_56 (G1), TomBrady_56 (G1), Tortoise12_56 (N), Totinger_85 (F1), Tweety_84 (F1), Typha_50 (Y), UncleRicky_82 (F1), VRedHorse_82 (F1), Vagabond_23 (O), Veteran_75 (F1), Vorrps_23 (O), Wee_89 (F1), Wendigo_58 (G1), Whouxphf_78 (F1), Wildflower_23 (O), Winget_23 (O), Yoshi_101 (F2), Zebo_22 (O), ZenTime222_54 (T), Zerg_78 (F1), Zizzle_81 (F1), ZoMa_57 (G1), Zombie_57 (G1),

Start 10:

- Found in 231 of 316 (73.1%) of genes in pham
- Manual Annotations of this start: 1 of 291
- Called 0.4% of time when present
- Phage (with cluster) where this start called: Plumbus_84 (F1),

Start 11:

- Found in 84 of 316 (26.6%) of genes in pham
- Manual Annotations of this start: 16 of 291
- Called 20.2% of time when present
- Phage (with cluster) where this start called: Bartholomew_72 (P1), BigPhil_77 (F1), Cerasum_78 (F1), Cheesepuff_48 (F1), Coco12_81 (F1), Fulbright_57 (N), Gex_60 (N), Kingsley_88 (F1), LordVader_48 (F), Olga_59 (G1), Philonius_59 (N), Phloss_57 (N), Pipsqueaks_60 (N), Sarma624_83 (F1), Schnauzer_60 (N), Silvafighter_60 (N), Xerxes_59 (N),

Start 12:

- Found in 316 of 316 (100.0%) of genes in pham
- Manual Annotations of this start: 70 of 291
- Called 27.8% of time when present
- Phage (with cluster) where this start called: Aggie_55 (N), Aloeri_63 (F1), AlpineSix_84 (F1), AuntGwenStacy_51 (Y), Beakin_86 (F1), Beanstalk_82 (F1), Blexus_78 (F1), BobaPhett_83 (F1), Brookers_79 (F1), BuzzLyseyear_83 (F1), Carcharodon_59 (N), Che8_89 (F1), Clank_38 (F), Corium_76 (F1), Crumble_78 (F1), DRBy19_87 (F1), DeadP_84 (F1), Demsculpinboyz_45 (F2), DillTech15_87 (F1), DirtMcgirt_82 (F1), Doomslug_96 (F), DosHalletts_83 (F1), Duplicity_57 (N), Enzomatic_94 (F1), Faiyaz_51 (Y), Fancypants_53 (F1), Fastidio_85 (F1), Frankie_77 (F1), Fruitloop_71 (F1), Galactic_84 (F1), Hotshotbaby7_53 (G1), IMpilo_78 (F1), IbOuu_78 (F1), Ibrahim_35 (T), Jant_90 (F1), Jennelsea_73 (F1), KingJulian_82 (F1), Latretium_85 (F1), LittleShirley_89 (F1), Lizziana_85 (F1), Lucia_82 (F1), MadMen_81 (F1), Mantra_80 (F1), Martik_91 (F1), Mattes_81 (F1), Medindi_87 (F1), Melissauren88_84 (F1), Melville_64 (N), MilanaBonita_73 (F1), Misha28_60 (F1), Modragons_82 (F1), Mowgli_53 (G1), MulchExplorer_82 (F1),

MulchSalad_89 (F7), Nichirin_78 (F1), Oksu_84 (F1), Ovechkin_51 (F1), PMC_80 (F1), Parmesanjohn_59 (N), PatoPoderoso_76 (F1), Peridot_87 (F1), Phasih_76 (F1), Philus_86 (F1), Plagueis_53 (G1), Polo2Bam_93 (F1), Priscilla_78 (F1), QuickMath_82 (F1), Quico_89 (F1), RockyHorror_81 (F1), RonRayGun_35 (T), Scitech_53 (N), SeaLumen_90 (F1), Seagreen_82 (F1), ShowerHandel_93 (F1), SiSi_79 (F1), Smurph_59 (N), Spoonbill_79 (F1), Tessdabest_59 (N), ThetaBob_82 (F4), TootsiePop_60 (F1), Velveteen_78 (F1), Venti_74 (P1), Violac_85 (F1), Vivum_83 (F1), XFactor_78 (F1), Yorick_76 (F1), YungJamal_25 (O), Zakhe101_48 (O),

Summary by clusters:

There are 14 clusters represented in this pham: F1, F2, P1, F4, G, G1, F, I1, F7, O, N, T, W, Y,

Info for manual annotations of cluster F1:

- Start number 4 was manually annotated 7 times for cluster F1.
- Start number 9 was manually annotated 102 times for cluster F1.
- Start number 10 was manually annotated 1 time for cluster F1.
- Start number 11 was manually annotated 6 times for cluster F1.
- Start number 12 was manually annotated 52 times for cluster F1.

Info for manual annotations of cluster F2:

- Start number 4 was manually annotated 1 time for cluster F2.
- Start number 9 was manually annotated 1 time for cluster F2.
- Start number 12 was manually annotated 1 time for cluster F2.

Info for manual annotations of cluster F4:

- Start number 12 was manually annotated 1 time for cluster F4.

Info for manual annotations of cluster G:

- Start number 9 was manually annotated 1 time for cluster G.

Info for manual annotations of cluster G1:

- Start number 4 was manually annotated 6 times for cluster G1.
- Start number 9 was manually annotated 42 times for cluster G1.
- Start number 11 was manually annotated 1 time for cluster G1.
- Start number 12 was manually annotated 3 times for cluster G1.

Info for manual annotations of cluster I1:

- Start number 4 was manually annotated 3 times for cluster I1.
- Start number 9 was manually annotated 2 times for cluster I1.

Info for manual annotations of cluster N:

- Start number 4 was manually annotated 1 time for cluster N.
- Start number 9 was manually annotated 2 times for cluster N.
- Start number 11 was manually annotated 8 times for cluster N.
- Start number 12 was manually annotated 6 times for cluster N.

Info for manual annotations of cluster O:

- Start number 4 was manually annotated 1 time for cluster O.

- Start number 8 was manually annotated 1 time for cluster O.
- Start number 9 was manually annotated 25 times for cluster O.
- Start number 12 was manually annotated 2 times for cluster O.

Info for manual annotations of cluster P1:

- Start number 11 was manually annotated 1 time for cluster P1.
- Start number 12 was manually annotated 1 time for cluster P1.

Info for manual annotations of cluster T:

- Start number 9 was manually annotated 1 time for cluster T.
- Start number 12 was manually annotated 2 times for cluster T.

Info for manual annotations of cluster W:

- Start number 4 was manually annotated 1 time for cluster W.
- Start number 9 was manually annotated 5 times for cluster W.

Info for manual annotations of cluster Y:

- Start number 9 was manually annotated 2 times for cluster Y.
- Start number 12 was manually annotated 2 times for cluster Y.

Gene Information:

Gene: Aggie_55 Start: 38539, Stop: 38871, Start Num: 12

Candidate Starts for Aggie_55:

(Start: 4 @38473 has 20 MA's), (Start: 9 @38500 has 183 MA's), (Start: 11 @38533 has 16 MA's),
(Start: 12 @38539 has 70 MA's), (13, 38575), (14, 38689),

Gene: Akhila_74 Start: 46879, Stop: 47250, Start Num: 9

Candidate Starts for Akhila_74:

(Start: 9 @46879 has 183 MA's), (Start: 10 @46909 has 1 MA's), (Start: 12 @46918 has 70 MA's), (13,
46954), (14, 47068), (16, 47128), (17, 47176), (18, 47179),

Gene: Alexphander_80 Start: 48851, Stop: 49222, Start Num: 9

Candidate Starts for Alexphander_80:

(Start: 9 @48851 has 183 MA's), (Start: 10 @48881 has 1 MA's), (Start: 12 @48890 has 70 MA's), (13,
48926), (14, 49040), (16, 49100), (17, 49148), (18, 49151),

Gene: Alkhayr_23 Start: 10697, Stop: 11071, Start Num: 9

Candidate Starts for Alkhayr_23:

(Start: 9 @10697 has 183 MA's), (Start: 10 @10727 has 1 MA's), (Start: 12 @10736 has 70 MA's), (13,
10772), (14, 10886), (16, 10946), (22, 11057),

Gene: Aloeri_63 Start: 40244, Stop: 40576, Start Num: 12

Candidate Starts for Aloeri_63:

(Start: 9 @40205 has 183 MA's), (Start: 10 @40235 has 1 MA's), (Start: 12 @40244 has 70 MA's), (13,
40280), (14, 40394), (16, 40454), (17, 40502), (18, 40505),

Gene: AlpineSix_84 Start: 48904, Stop: 49236, Start Num: 12

Candidate Starts for AlpineSix_84:

(Start: 9 @48865 has 183 MA's), (Start: 10 @48895 has 1 MA's), (Start: 12 @48904 has 70 MA's), (13,
48940), (14, 49054), (16, 49114), (17, 49162), (18, 49165),

Gene: Annihilator_57 Start: 39840, Stop: 40238, Start Num: 4

Candidate Starts for Annihilator_57:

(Start: 4 @39840 has 20 MA's), (Start: 9 @39867 has 183 MA's), (Start: 11 @39900 has 16 MA's),
(Start: 12 @39906 has 70 MA's), (13, 39942), (14, 40056),

Gene: ArcusAngelus_39 Start: 32098, Stop: 31727, Start Num: 9

Candidate Starts for ArcusAngelus_39:

(Start: 4 @32125 has 20 MA's), (Start: 9 @32098 has 183 MA's), (Start: 11 @32065 has 16 MA's),
(Start: 12 @32059 has 70 MA's), (13, 32023), (14, 31909),

Gene: Ardmore_69 Start: 44219, Stop: 44590, Start Num: 9

Candidate Starts for Ardmore_69:

(Start: 9 @44219 has 183 MA's), (Start: 10 @44249 has 1 MA's), (Start: 12 @44258 has 70 MA's), (13,
44294), (14, 44408), (16, 44468), (17, 44516), (18, 44519),

Gene: Argie_66 Start: 49072, Stop: 49443, Start Num: 9

Candidate Starts for Argie_66:

(Start: 9 @49072 has 183 MA's), (Start: 10 @49102 has 1 MA's), (Start: 12 @49111 has 70 MA's), (13,
49147), (14, 49261), (16, 49321), (17, 49369), (18, 49372),

Gene: Aroostook_53 Start: 37660, Stop: 38049, Start Num: 4

Candidate Starts for Aroostook_53:

(Start: 4 @37660 has 20 MA's), (Start: 9 @37687 has 183 MA's), (Start: 11 @37720 has 16 MA's),
(Start: 12 @37726 has 70 MA's), (13, 37762), (14, 37876),

Gene: Ashwin_24 Start: 10917, Stop: 11291, Start Num: 9

Candidate Starts for Ashwin_24:

(Start: 9 @10917 has 183 MA's), (Start: 10 @10947 has 1 MA's), (Start: 12 @10956 has 70 MA's), (13,
10992), (14, 11106), (16, 11166), (22, 11277),

Gene: AuntGwenStacy_51 Start: 37629, Stop: 37961, Start Num: 12

Candidate Starts for AuntGwenStacy_51:

(Start: 9 @37590 has 183 MA's), (Start: 10 @37620 has 1 MA's), (Start: 12 @37629 has 70 MA's), (13,
37665), (14, 37779), (16, 37839), (17, 37887), (18, 37890),

Gene: Avani_41 Start: 29893, Stop: 29495, Start Num: 4

Candidate Starts for Avani_41:

(Start: 4 @29893 has 20 MA's), (Start: 9 @29866 has 183 MA's), (Start: 11 @29833 has 16 MA's),
(Start: 12 @29827 has 70 MA's), (13, 29791), (14, 29677),

Gene: Avrafan_57 Start: 39875, Stop: 40246, Start Num: 9

Candidate Starts for Avrafan_57:

(Start: 9 @39875 has 183 MA's), (Start: 10 @39905 has 1 MA's), (Start: 12 @39914 has 70 MA's), (13,
39950), (14, 40064), (16, 40124), (17, 40172), (18, 40175),

Gene: Awesomesauce_62 Start: 39288, Stop: 39659, Start Num: 9

Candidate Starts for Awesomesauce_62:

(Start: 9 @39288 has 183 MA's), (Start: 10 @39318 has 1 MA's), (Start: 12 @39327 has 70 MA's), (13,
39363), (14, 39477), (16, 39537), (17, 39585), (18, 39588),

Gene: AzulaCat_58 Start: 39158, Stop: 39529, Start Num: 9

Candidate Starts for AzulaCat_58:

(Start: 9 @39158 has 183 MA's), (Start: 10 @39188 has 1 MA's), (Start: 12 @39197 has 70 MA's), (13, 39233), (14, 39347), (16, 39407), (17, 39455), (18, 39458),

Gene: BPs_58 Start: 39937, Stop: 40308, Start Num: 9

Candidate Starts for BPs_58:

(Start: 9 @39937 has 183 MA's), (Start: 10 @39967 has 1 MA's), (Start: 12 @39976 has 70 MA's), (13, 40012), (14, 40126), (16, 40186), (17, 40234), (18, 40237),

Gene: BQuat_45 Start: 34998, Stop: 35369, Start Num: 9

Candidate Starts for BQuat_45:

(Start: 4 @34971 has 20 MA's), (Start: 9 @34998 has 183 MA's), (Start: 11 @35031 has 16 MA's), (Start: 12 @35037 has 70 MA's), (13, 35073), (14, 35187),

Gene: Babsiella_69 Start: 43709, Stop: 44107, Start Num: 4

Candidate Starts for Babsiella_69:

(Start: 4 @43709 has 20 MA's), (Start: 9 @43736 has 183 MA's), (Start: 11 @43769 has 16 MA's), (Start: 12 @43775 has 70 MA's), (13, 43811), (14, 43925),

Gene: Bartholomew_72 Start: 44151, Stop: 44489, Start Num: 11

Candidate Starts for Bartholomew_72:

(Start: 4 @44091 has 20 MA's), (Start: 9 @44118 has 183 MA's), (Start: 11 @44151 has 16 MA's), (Start: 12 @44157 has 70 MA's), (13, 44193), (14, 44307),

Gene: Beakin_76 Start: 46101, Stop: 46472, Start Num: 9

Candidate Starts for Beakin_76:

(Start: 9 @46101 has 183 MA's), (Start: 10 @46131 has 1 MA's), (Start: 12 @46140 has 70 MA's), (13, 46176), (14, 46290), (16, 46350), (17, 46398), (18, 46401),

Gene: Beakin_86 Start: 49592, Stop: 49924, Start Num: 12

Candidate Starts for Beakin_86:

(Start: 4 @49526 has 20 MA's), (Start: 9 @49553 has 183 MA's), (Start: 11 @49586 has 16 MA's), (Start: 12 @49592 has 70 MA's), (13, 49628), (14, 49742),

Gene: Beanstalk_82 Start: 49021, Stop: 49353, Start Num: 12

Candidate Starts for Beanstalk_82:

(Start: 9 @48982 has 183 MA's), (Start: 10 @49012 has 1 MA's), (Start: 12 @49021 has 70 MA's), (13, 49057), (14, 49171), (16, 49231), (17, 49279), (18, 49282),

Gene: BigPhil_77 Start: 45784, Stop: 46122, Start Num: 11

Candidate Starts for BigPhil_77:

(Start: 4 @45724 has 20 MA's), (Start: 9 @45751 has 183 MA's), (Start: 11 @45784 has 16 MA's), (Start: 12 @45790 has 70 MA's), (13, 45826), (14, 45940),

Gene: Blessica_23 Start: 10720, Stop: 11094, Start Num: 9

Candidate Starts for Blessica_23:

(Start: 9 @10720 has 183 MA's), (Start: 10 @10750 has 1 MA's), (Start: 12 @10759 has 70 MA's), (13, 10795), (14, 10909), (16, 10969), (22, 11080),

Gene: Blexus_78 Start: 49437, Stop: 49769, Start Num: 12

Candidate Starts for Blexus_78:

(Start: 9 @49398 has 183 MA's), (Start: 10 @49428 has 1 MA's), (Start: 12 @49437 has 70 MA's), (13, 49473), (14, 49587), (16, 49647), (17, 49695), (18, 49698),

Gene: BlueCrab_81 Start: 49348, Stop: 49719, Start Num: 9

Candidate Starts for BlueCrab_81:

(Start: 9 @49348 has 183 MA's), (Start: 10 @49378 has 1 MA's), (Start: 12 @49387 has 70 MA's), (13, 49423), (14, 49537), (16, 49597), (17, 49645), (18, 49648),

Gene: BobaPhett_83 Start: 51394, Stop: 51726, Start Num: 12

Candidate Starts for BobaPhett_83:

(Start: 9 @51355 has 183 MA's), (Start: 10 @51385 has 1 MA's), (Start: 12 @51394 has 70 MA's), (13, 51430), (14, 51544), (16, 51604), (17, 51652), (18, 51655),

Gene: Boomer_87 Start: 50213, Stop: 50584, Start Num: 9

Candidate Starts for Boomer_87:

(Start: 9 @50213 has 183 MA's), (Start: 10 @50243 has 1 MA's), (Start: 12 @50252 has 70 MA's), (13, 50288), (14, 50402), (16, 50462), (17, 50510), (18, 50513),

Gene: Bora_45 Start: 24565, Stop: 24167, Start Num: 4

Candidate Starts for Bora_45:

(Start: 4 @24565 has 20 MA's), (Start: 9 @24538 has 183 MA's), (Start: 11 @24505 has 16 MA's), (Start: 12 @24499 has 70 MA's), (13, 24463), (14, 24349),

Gene: Brocalys_73 Start: 46835, Stop: 47206, Start Num: 9

Candidate Starts for Brocalys_73:

(Start: 9 @46835 has 183 MA's), (Start: 10 @46865 has 1 MA's), (Start: 12 @46874 has 70 MA's), (13, 46910), (14, 47024), (16, 47084), (17, 47132), (18, 47135),

Gene: BronnyJr_67 Start: 44659, Stop: 45030, Start Num: 9

Candidate Starts for BronnyJr_67:

(Start: 4 @44632 has 20 MA's), (Start: 9 @44659 has 183 MA's), (Start: 11 @44692 has 16 MA's), (Start: 12 @44698 has 70 MA's), (13, 44734), (14, 44848),

Gene: Brookers_79 Start: 48741, Stop: 49073, Start Num: 12

Candidate Starts for Brookers_79:

(Start: 4 @48675 has 20 MA's), (Start: 9 @48702 has 183 MA's), (Start: 11 @48735 has 16 MA's), (Start: 12 @48741 has 70 MA's), (13, 48777), (14, 48891),

Gene: BruceB_58 Start: 39937, Stop: 40308, Start Num: 9

Candidate Starts for BruceB_58:

(Start: 9 @39937 has 183 MA's), (Start: 10 @39967 has 1 MA's), (Start: 12 @39976 has 70 MA's), (13, 40012), (14, 40126), (16, 40186), (17, 40234), (18, 40237),

Gene: Brujita_51 Start: 36162, Stop: 36533, Start Num: 9

Candidate Starts for Brujita_51:

(Start: 9 @36162 has 183 MA's), (Start: 10 @36192 has 1 MA's), (Start: 12 @36201 has 70 MA's), (13, 36237), (14, 36351), (16, 36411), (17, 36459), (18, 36462),

Gene: Burwell21_78 Start: 49121, Stop: 49492, Start Num: 9

Candidate Starts for Burwell21_78:

(Start: 9 @49121 has 183 MA's), (Start: 10 @49151 has 1 MA's), (Start: 12 @49160 has 70 MA's), (13, 49196), (14, 49310), (16, 49370), (17, 49418), (18, 49421),

Gene: BuzzLyseyear_83 Start: 50298, Stop: 50630, Start Num: 12

Candidate Starts for BuzzLyseyear_83:

(Start: 9 @50259 has 183 MA's), (Start: 10 @50289 has 1 MA's), (Start: 12 @50298 has 70 MA's), (13, 50334), (14, 50448), (16, 50508), (17, 50556), (18, 50559),

Gene: ByChance_83 Start: 47974, Stop: 48372, Start Num: 4

Candidate Starts for ByChance_83:

(Start: 4 @47974 has 20 MA's), (Start: 9 @48001 has 183 MA's), (Start: 11 @48034 has 16 MA's), (Start: 12 @48040 has 70 MA's), (13, 48076), (14, 48190),

Gene: Byougenkin_80 Start: 46822, Stop: 47193, Start Num: 9

Candidate Starts for Byougenkin_80:

(Start: 9 @46822 has 183 MA's), (Start: 10 @46852 has 1 MA's), (Start: 12 @46861 has 70 MA's), (13, 46897), (14, 47011), (16, 47071), (17, 47119), (18, 47122),

Gene: Cabrinians_80 Start: 48755, Stop: 49126, Start Num: 9

Candidate Starts for Cabrinians_80:

(Start: 9 @48755 has 183 MA's), (Start: 10 @48785 has 1 MA's), (Start: 12 @48794 has 70 MA's), (13, 48830), (14, 48944), (16, 49004), (17, 49052), (18, 49055),

Gene: Camri_61 Start: 40731, Stop: 41102, Start Num: 9

Candidate Starts for Camri_61:

(Start: 9 @40731 has 183 MA's), (Start: 10 @40761 has 1 MA's), (Start: 12 @40770 has 70 MA's), (13, 40806), (14, 40920), (16, 40980), (17, 41028), (18, 41031),

Gene: CaptainTrips_86 Start: 49981, Stop: 50352, Start Num: 9

Candidate Starts for CaptainTrips_86:

(Start: 9 @49981 has 183 MA's), (Start: 10 @50011 has 1 MA's), (Start: 12 @50020 has 70 MA's), (13, 50056), (14, 50170), (16, 50230), (17, 50278), (18, 50281),

Gene: Carcharodon_59 Start: 37883, Stop: 38215, Start Num: 12

Candidate Starts for Carcharodon_59:

(Start: 4 @37817 has 20 MA's), (Start: 9 @37844 has 183 MA's), (Start: 11 @37877 has 16 MA's), (Start: 12 @37883 has 70 MA's), (13, 37919), (14, 38033),

Gene: CassieYates_56 Start: 38643, Stop: 39014, Start Num: 9

Candidate Starts for CassieYates_56:

(Start: 9 @38643 has 183 MA's), (Start: 10 @38673 has 1 MA's), (Start: 12 @38682 has 70 MA's), (13, 38718), (14, 38832), (16, 38892), (17, 38940), (18, 38943),

Gene: Catdawg_22 Start: 10326, Stop: 10700, Start Num: 9

Candidate Starts for Catdawg_22:

(Start: 9 @10326 has 183 MA's), (Start: 10 @10356 has 1 MA's), (Start: 12 @10365 has 70 MA's), (13, 10401), (14, 10515), (16, 10575), (22, 10686),

Gene: Cedasite_56 Start: 38643, Stop: 39014, Start Num: 9

Candidate Starts for Cedasite_56:

(Start: 9 @38643 has 183 MA's), (Start: 10 @38673 has 1 MA's), (Start: 12 @38682 has 70 MA's), (13, 38718), (14, 38832), (16, 38892), (17, 38940), (18, 38943),

Gene: Cepens_68 Start: 49954, Stop: 50325, Start Num: 9

Candidate Starts for Cepens_68:

(Start: 9 @49954 has 183 MA's), (Start: 10 @49984 has 1 MA's), (Start: 12 @49993 has 70 MA's), (13, 50029), (14, 50143), (16, 50203), (17, 50251), (18, 50254),

Gene: Cerasum_78 Start: 45802, Stop: 46140, Start Num: 11

Candidate Starts for Cerasum_78:

(Start: 4 @45742 has 20 MA's), (Start: 9 @45769 has 183 MA's), (Start: 11 @45802 has 16 MA's),
(Start: 12 @45808 has 70 MA's), (13, 45844), (14, 45958),

Gene: Chance64_53 Start: 37660, Stop: 38049, Start Num: 4

Candidate Starts for Chance64_53:

(Start: 4 @37660 has 20 MA's), (Start: 9 @37687 has 183 MA's), (Start: 11 @37720 has 16 MA's),
(Start: 12 @37726 has 70 MA's), (13, 37762), (14, 37876),

Gene: Che8_89 Start: 50756, Stop: 51088, Start Num: 12

Candidate Starts for Che8_89:

(Start: 9 @50717 has 183 MA's), (Start: 10 @50747 has 1 MA's), (Start: 12 @50756 has 70 MA's), (13,
50792), (14, 50906), (16, 50966), (17, 51014), (18, 51017),

Gene: Cheesepuff_48 Start: 34932, Stop: 35270, Start Num: 11

Candidate Starts for Cheesepuff_48:

(Start: 4 @34872 has 20 MA's), (Start: 9 @34899 has 183 MA's), (Start: 11 @34932 has 16 MA's),
(Start: 12 @34938 has 70 MA's), (13, 34974), (14, 35088),

Gene: Chevrolet_41 Start: 32126, Stop: 31728, Start Num: 4

Candidate Starts for Chevrolet_41:

(Start: 4 @32126 has 20 MA's), (Start: 9 @32099 has 183 MA's), (Start: 11 @32066 has 16 MA's),
(Start: 12 @32060 has 70 MA's), (13, 32024), (14, 31910),

Gene: Chewbacca_59 Start: 37273, Stop: 37644, Start Num: 9

Candidate Starts for Chewbacca_59:

(Start: 9 @37273 has 183 MA's), (Start: 10 @37303 has 1 MA's), (Start: 12 @37312 has 70 MA's), (13,
37348), (14, 37462), (16, 37522), (17, 37570), (18, 37573),

Gene: ChickenDinner_62 Start: 40205, Stop: 40576, Start Num: 9

Candidate Starts for ChickenDinner_62:

(Start: 9 @40205 has 183 MA's), (Start: 10 @40235 has 1 MA's), (Start: 12 @40244 has 70 MA's), (13,
40280), (14, 40394), (16, 40454), (17, 40502), (18, 40505),

Gene: Chuckly_89 Start: 49034, Stop: 49405, Start Num: 9

Candidate Starts for Chuckly_89:

(Start: 4 @49007 has 20 MA's), (Start: 9 @49034 has 183 MA's), (Start: 11 @49067 has 16 MA's),
(Start: 12 @49073 has 70 MA's), (13, 49109), (14, 49223),

Gene: Clank_38 Start: 30935, Stop: 30603, Start Num: 12

Candidate Starts for Clank_38:

(Start: 4 @31001 has 20 MA's), (Start: 9 @30974 has 183 MA's), (Start: 11 @30941 has 16 MA's),
(Start: 12 @30935 has 70 MA's), (13, 30899), (14, 30785),

Gene: Clifton_76 Start: 47937, Stop: 48308, Start Num: 9

Candidate Starts for Clifton_76:

(Start: 9 @47937 has 183 MA's), (Start: 10 @47967 has 1 MA's), (Start: 12 @47976 has 70 MA's), (13,
48012), (14, 48126), (16, 48186), (17, 48234), (18, 48237),

Gene: Coco12_81 Start: 49859, Stop: 50197, Start Num: 11

Candidate Starts for Coco12_81:

(Start: 4 @49799 has 20 MA's), (Start: 9 @49826 has 183 MA's), (Start: 11 @49859 has 16 MA's),
(Start: 12 @49865 has 70 MA's), (13, 49901), (14, 50015),

Gene: Coleslaw_45 Start: 34998, Stop: 35369, Start Num: 9

Candidate Starts for Coleslaw_45:

(Start: 4 @34971 has 20 MA's), (Start: 9 @34998 has 183 MA's), (Start: 11 @35031 has 16 MA's),
(Start: 12 @35037 has 70 MA's), (13, 35073), (14, 35187),

Gene: Corium_76 Start: 49397, Stop: 49729, Start Num: 12

Candidate Starts for Corium_76:

(Start: 9 @49358 has 183 MA's), (Start: 10 @49388 has 1 MA's), (Start: 12 @49397 has 70 MA's), (13,
49433), (14, 49547), (16, 49607), (17, 49655), (18, 49658),

Gene: Corndog_25 Start: 11029, Stop: 11334, Start Num: 9

Candidate Starts for Corndog_25:

(Start: 9 @11029 has 183 MA's), (Start: 10 @11059 has 1 MA's), (Start: 12 @11068 has 70 MA's), (13,
11104), (14, 11218), (16, 11278),

Gene: Cornucopia_83 Start: 48114, Stop: 48485, Start Num: 9

Candidate Starts for Cornucopia_83:

(Start: 9 @48114 has 183 MA's), (Start: 10 @48144 has 1 MA's), (Start: 12 @48153 has 70 MA's), (13,
48189), (14, 48303), (16, 48363), (17, 48411), (18, 48414),

Gene: Crespo_55 Start: 38644, Stop: 39015, Start Num: 9

Candidate Starts for Crespo_55:

(Start: 9 @38644 has 183 MA's), (Start: 10 @38674 has 1 MA's), (Start: 12 @38683 has 70 MA's), (13,
38719), (14, 38833), (16, 38893), (17, 38941), (18, 38944),

Gene: Crumble_78 Start: 45519, Stop: 45851, Start Num: 12

Candidate Starts for Crumble_78:

(Start: 9 @45480 has 183 MA's), (Start: 10 @45510 has 1 MA's), (Start: 12 @45519 has 70 MA's), (13,
45555), (14, 45669), (16, 45729), (17, 45777), (18, 45780),

Gene: D12_68 Start: 50589, Stop: 50960, Start Num: 9

Candidate Starts for D12_68:

(Start: 9 @50589 has 183 MA's), (Start: 10 @50619 has 1 MA's), (Start: 12 @50628 has 70 MA's), (13,
50664), (14, 50778), (16, 50838), (17, 50886), (18, 50889),

Gene: DLane_84 Start: 50726, Stop: 51097, Start Num: 9

Candidate Starts for DLane_84:

(Start: 9 @50726 has 183 MA's), (Start: 10 @50756 has 1 MA's), (Start: 12 @50765 has 70 MA's), (13,
50801), (14, 50915), (16, 50975), (17, 51023), (18, 51026),

Gene: DMoney_57 Start: 39853, Stop: 40224, Start Num: 9

Candidate Starts for DMoney_57:

(Start: 9 @39853 has 183 MA's), (Start: 10 @39883 has 1 MA's), (Start: 12 @39892 has 70 MA's), (13,
39928), (14, 40042), (16, 40102), (17, 40150), (18, 40153),

Gene: DRBy19_87 Start: 51705, Stop: 52037, Start Num: 12

Candidate Starts for DRBy19_87:

(Start: 9 @51666 has 183 MA's), (Start: 10 @51696 has 1 MA's), (Start: 12 @51705 has 70 MA's), (13,
51741), (14, 51855), (16, 51915), (17, 51963), (18, 51966),

Gene: Dante_81 Start: 50860, Stop: 51231, Start Num: 9

Candidate Starts for Dante_81:

(Start: 9 @50860 has 183 MA's), (Start: 10 @50890 has 1 MA's), (Start: 12 @50899 has 70 MA's), (13, 50935), (14, 51049), (16, 51109), (17, 51157), (18, 51160),

Gene: Darionha_55 Start: 38290, Stop: 38661, Start Num: 9

Candidate Starts for Darionha_55:

(Start: 9 @38290 has 183 MA's), (Start: 10 @38320 has 1 MA's), (Start: 12 @38329 has 70 MA's), (13, 38365), (14, 38479), (16, 38539), (17, 38587), (18, 38590),

Gene: DeadP_84 Start: 48685, Stop: 49017, Start Num: 12

Candidate Starts for DeadP_84:

(Start: 9 @48646 has 183 MA's), (Start: 10 @48676 has 1 MA's), (Start: 12 @48685 has 70 MA's), (13, 48721), (14, 48835), (16, 48895), (17, 48943), (18, 48946),

Gene: Demsculpinboyz_45 Start: 30025, Stop: 29693, Start Num: 12

Candidate Starts for Demsculpinboyz_45:

(Start: 4 @30091 has 20 MA's), (Start: 9 @30064 has 183 MA's), (Start: 11 @30031 has 16 MA's), (Start: 12 @30025 has 70 MA's), (13, 29989), (14, 29875),

Gene: DillTech15_87 Start: 48877, Stop: 49143, Start Num: 12

Candidate Starts for DillTech15_87:

(Start: 9 @48838 has 183 MA's), (Start: 10 @48868 has 1 MA's), (Start: 12 @48877 has 70 MA's), (13, 48913), (14, 49027), (16, 49087),

Gene: DingDing_58 Start: 39158, Stop: 39529, Start Num: 9

Candidate Starts for DingDing_58:

(Start: 9 @39158 has 183 MA's), (Start: 10 @39188 has 1 MA's), (Start: 12 @39197 has 70 MA's), (13, 39233), (14, 39347), (16, 39407), (17, 39455), (18, 39458),

Gene: DirtMcgirt_82 Start: 46862, Stop: 47194, Start Num: 12

Candidate Starts for DirtMcgirt_82:

(Start: 9 @46823 has 183 MA's), (Start: 10 @46853 has 1 MA's), (Start: 12 @46862 has 70 MA's), (13, 46898), (14, 47012), (16, 47072), (17, 47120), (18, 47123),

Gene: DoRead_83 Start: 47481, Stop: 47852, Start Num: 9

Candidate Starts for DoRead_83:

(Start: 9 @47481 has 183 MA's), (Start: 10 @47511 has 1 MA's), (Start: 12 @47520 has 70 MA's), (13, 47556), (14, 47670), (16, 47730), (17, 47778), (18, 47781),

Gene: DocMcStuffins_62 Start: 40205, Stop: 40576, Start Num: 9

Candidate Starts for DocMcStuffins_62:

(Start: 9 @40205 has 183 MA's), (Start: 10 @40235 has 1 MA's), (Start: 12 @40244 has 70 MA's), (13, 40280), (14, 40394), (16, 40454), (17, 40502), (18, 40505),

Gene: Doomslug_96 Start: 51107, Stop: 51439, Start Num: 12

Candidate Starts for Doomslug_96:

(Start: 9 @51068 has 183 MA's), (Start: 10 @51098 has 1 MA's), (Start: 12 @51107 has 70 MA's), (13, 51143), (14, 51257), (16, 51317), (17, 51365), (18, 51368),

Gene: DosHalletts_83 Start: 50224, Stop: 50577, Start Num: 12

Candidate Starts for DosHalletts_83:

(Start: 9 @50185 has 183 MA's), (Start: 10 @50215 has 1 MA's), (Start: 12 @50224 has 70 MA's), (13, 50260), (14, 50374), (16, 50434), (17, 50482), (18, 50485), (20, 50500), (21, 50518),

Gene: Doug_80 Start: 49682, Stop: 49987, Start Num: 9

Candidate Starts for Doug_80:

(Start: 9 @49682 has 183 MA's), (Start: 10 @49712 has 1 MA's), (Start: 12 @49721 has 70 MA's), (13, 49757), (14, 49871), (16, 49931),

Gene: Drago_80 Start: 46826, Stop: 47197, Start Num: 9

Candidate Starts for Drago_80:

(Start: 9 @46826 has 183 MA's), (Start: 10 @46856 has 1 MA's), (Start: 12 @46865 has 70 MA's), (13, 46901), (14, 47015), (16, 47075), (17, 47123), (18, 47126),

Gene: Duplicity_57 Start: 37140, Stop: 37472, Start Num: 12

Candidate Starts for Duplicity_57:

(Start: 4 @37074 has 20 MA's), (Start: 9 @37101 has 183 MA's), (Start: 11 @37134 has 16 MA's), (Start: 12 @37140 has 70 MA's), (13, 37176), (14, 37290),

Gene: ECartman_53 Start: 38280, Stop: 38651, Start Num: 9

Candidate Starts for ECartman_53:

(Start: 9 @38280 has 183 MA's), (Start: 10 @38310 has 1 MA's), (Start: 12 @38319 has 70 MA's), (13, 38355), (14, 38469), (16, 38529), (17, 38577), (18, 38580),

Gene: Eish_86 Start: 50529, Stop: 50900, Start Num: 9

Candidate Starts for Eish_86:

(Start: 9 @50529 has 183 MA's), (Start: 10 @50559 has 1 MA's), (Start: 12 @50568 has 70 MA's), (13, 50604), (14, 50718), (16, 50778), (17, 50826), (18, 50829),

Gene: EleanorGeorge_97 Start: 53726, Stop: 54124, Start Num: 4

Candidate Starts for EleanorGeorge_97:

(Start: 4 @53726 has 20 MA's), (Start: 9 @53753 has 183 MA's), (Start: 11 @53786 has 16 MA's), (Start: 12 @53792 has 70 MA's), (13, 53828), (14, 53942),

Gene: Emma_87 Start: 48858, Stop: 49163, Start Num: 9

Candidate Starts for Emma_87:

(Start: 9 @48858 has 183 MA's), (Start: 10 @48888 has 1 MA's), (Start: 12 @48897 has 70 MA's), (13, 48933), (14, 49047), (16, 49107),

Gene: Emmaloid_85 Start: 49155, Stop: 49526, Start Num: 9

Candidate Starts for Emmaloid_85:

(Start: 9 @49155 has 183 MA's), (Start: 10 @49185 has 1 MA's), (Start: 12 @49194 has 70 MA's), (13, 49230), (14, 49344), (16, 49404), (17, 49452), (18, 49455),

Gene: Enby_84 Start: 47102, Stop: 47473, Start Num: 9

Candidate Starts for Enby_84:

(Start: 9 @47102 has 183 MA's), (Start: 10 @47132 has 1 MA's), (Start: 12 @47141 has 70 MA's), (13, 47177), (14, 47291), (16, 47351), (17, 47399), (18, 47402),

Gene: Enzomatic_94 Start: 48281, Stop: 48613, Start Num: 12

Candidate Starts for Enzomatic_94:

(Start: 9 @48242 has 183 MA's), (Start: 10 @48272 has 1 MA's), (Start: 12 @48281 has 70 MA's), (13, 48317), (14, 48431), (16, 48491), (17, 48539), (18, 48542),

Gene: Eradicator_74 Start: 47425, Stop: 47796, Start Num: 9

Candidate Starts for Eradicator_74:

(Start: 9 @47425 has 183 MA's), (Start: 10 @47455 has 1 MA's), (Start: 12 @47464 has 70 MA's), (13, 47500), (14, 47614), (16, 47674), (17, 47722), (18, 47725),

Gene: Faiyaz_51 Start: 37614, Stop: 37946, Start Num: 12

Candidate Starts for Faiyaz_51:

(Start: 9 @37575 has 183 MA's), (Start: 10 @37605 has 1 MA's), (Start: 12 @37614 has 70 MA's), (13, 37650), (14, 37764), (16, 37824), (17, 37872), (18, 37875),

Gene: Familton_23 Start: 10327, Stop: 10701, Start Num: 9

Candidate Starts for Familton_23:

(Start: 9 @10327 has 183 MA's), (Start: 10 @10357 has 1 MA's), (Start: 12 @10366 has 70 MA's), (13, 10402), (14, 10516), (16, 10576), (22, 10687),

Gene: Fancypants_53 Start: 37855, Stop: 38187, Start Num: 12

Candidate Starts for Fancypants_53:

(Start: 9 @37816 has 183 MA's), (Start: 10 @37846 has 1 MA's), (Start: 12 @37855 has 70 MA's), (13, 37891), (14, 38005), (16, 38065), (17, 38113), (18, 38116),

Gene: Fastidio_85 Start: 47111, Stop: 47443, Start Num: 12

Candidate Starts for Fastidio_85:

(Start: 9 @47072 has 183 MA's), (Start: 10 @47102 has 1 MA's), (Start: 12 @47111 has 70 MA's), (13, 47147), (14, 47261), (16, 47321), (17, 47369), (18, 47372),

Gene: Firecracker_23 Start: 10650, Stop: 10994, Start Num: 9

Candidate Starts for Firecracker_23:

(Start: 9 @10650 has 183 MA's), (Start: 10 @10680 has 1 MA's), (Start: 12 @10689 has 70 MA's), (13, 10725), (14, 10839), (16, 10899), (22, 10980),

Gene: Flathead_83 Start: 49275, Stop: 49646, Start Num: 9

Candidate Starts for Flathead_83:

(Start: 9 @49275 has 183 MA's), (Start: 10 @49305 has 1 MA's), (Start: 12 @49314 has 70 MA's), (13, 49350), (14, 49464), (16, 49524), (17, 49572), (18, 49575),

Gene: Florinda_92 Start: 51063, Stop: 51434, Start Num: 9

Candidate Starts for Florinda_92:

(Start: 9 @51063 has 183 MA's), (Start: 10 @51093 has 1 MA's), (Start: 12 @51102 has 70 MA's), (13, 51138), (14, 51252), (16, 51312), (17, 51360), (18, 51363),

Gene: FoulBall_22 Start: 10327, Stop: 10701, Start Num: 9

Candidate Starts for FoulBall_22:

(Start: 9 @10327 has 183 MA's), (Start: 10 @10357 has 1 MA's), (Start: 12 @10366 has 70 MA's), (13, 10402), (14, 10516), (16, 10576), (22, 10687),

Gene: Frankie_77 Start: 46272, Stop: 46604, Start Num: 12

Candidate Starts for Frankie_77:

(Start: 4 @46206 has 20 MA's), (Start: 9 @46233 has 183 MA's), (Start: 11 @46266 has 16 MA's), (Start: 12 @46272 has 70 MA's), (13, 46308), (14, 46422),

Gene: FreddyB_91 Start: 50402, Stop: 50773, Start Num: 9

Candidate Starts for FreddyB_91:

(Start: 9 @50402 has 183 MA's), (Start: 10 @50432 has 1 MA's), (Start: 12 @50441 has 70 MA's), (13, 50477), (14, 50591), (16, 50651), (17, 50699), (18, 50702),

Gene: Frosty24_59 Start: 40199, Stop: 40570, Start Num: 9

Candidate Starts for Frosty24_59:

(Start: 9 @40199 has 183 MA's), (Start: 10 @40229 has 1 MA's), (Start: 12 @40238 has 70 MA's), (13, 40274), (14, 40388), (16, 40448), (17, 40496),

Gene: Fruitloop_71 Start: 46844, Stop: 47176, Start Num: 12

Candidate Starts for Fruitloop_71:

(Start: 4 @46778 has 20 MA's), (Start: 9 @46805 has 183 MA's), (Start: 11 @46838 has 16 MA's), (Start: 12 @46844 has 70 MA's), (13, 46880), (14, 46994),

Gene: Fulbright_57 Start: 36571, Stop: 36909, Start Num: 11

Candidate Starts for Fulbright_57:

(Start: 4 @36511 has 20 MA's), (Start: 9 @36538 has 183 MA's), (Start: 11 @36571 has 16 MA's), (Start: 12 @36577 has 70 MA's), (13, 36613), (14, 36727),

Gene: GUmbie_74 Start: 47610, Stop: 47981, Start Num: 9

Candidate Starts for GUmbie_74:

(Start: 9 @47610 has 183 MA's), (Start: 10 @47640 has 1 MA's), (Start: 12 @47649 has 70 MA's), (13, 47685), (14, 47799), (16, 47859), (17, 47907), (18, 47910),

Gene: Galactic_84 Start: 49491, Stop: 49823, Start Num: 12

Candidate Starts for Galactic_84:

(Start: 12 @49491 has 70 MA's), (13, 49527), (14, 49641), (16, 49701), (17, 49749), (18, 49752),

Gene: Gandalph_81 Start: 46546, Stop: 46917, Start Num: 9

Candidate Starts for Gandalph_81:

(Start: 9 @46546 has 183 MA's), (Start: 10 @46576 has 1 MA's), (Start: 12 @46585 has 70 MA's), (13, 46621), (14, 46735), (16, 46795), (17, 46843), (18, 46846),

Gene: Gex_60 Start: 37893, Stop: 38231, Start Num: 11

Candidate Starts for Gex_60:

(Start: 4 @37833 has 20 MA's), (Start: 9 @37860 has 183 MA's), (Start: 11 @37893 has 16 MA's), (Start: 12 @37899 has 70 MA's), (13, 37935), (14, 38049),

Gene: Gideon_47 Start: 35578, Stop: 35967, Start Num: 4

Candidate Starts for Gideon_47:

(Start: 4 @35578 has 20 MA's), (Start: 9 @35605 has 183 MA's), (Start: 11 @35638 has 16 MA's), (Start: 12 @35644 has 70 MA's), (13, 35680), (14, 35794),

Gene: GigiOuiOui_77 Start: 48271, Stop: 48642, Start Num: 9

Candidate Starts for GigiOuiOui_77:

(Start: 9 @48271 has 183 MA's), (Start: 10 @48301 has 1 MA's), (Start: 12 @48310 has 70 MA's), (13, 48346), (14, 48460), (16, 48520), (17, 48568), (18, 48571),

Gene: Girafales_89 Start: 50668, Stop: 51039, Start Num: 9

Candidate Starts for Girafales_89:

(Start: 9 @50668 has 183 MA's), (Start: 10 @50698 has 1 MA's), (Start: 12 @50707 has 70 MA's), (13, 50743), (14, 50857), (16, 50917), (17, 50965), (18, 50968),

Gene: Girr_80 Start: 49497, Stop: 49802, Start Num: 9

Candidate Starts for Girr_80:

(Start: 9 @49497 has 183 MA's), (Start: 10 @49527 has 1 MA's), (Start: 12 @49536 has 70 MA's), (13, 49572), (14, 49686), (16, 49746),

Gene: GodPhather_86 Start: 58591, Stop: 58989, Start Num: 4

Candidate Starts for GodPhather_86:

(Start: 4 @58591 has 20 MA's), (Start: 9 @58618 has 183 MA's), (Start: 11 @58651 has 16 MA's), (Start: 12 @58657 has 70 MA's), (13, 58693), (14, 58807), (19, 58924),

Gene: Gomashi_57 Start: 39877, Stop: 40248, Start Num: 9

Candidate Starts for Gomashi_57:

(Start: 4 @39850 has 20 MA's), (Start: 9 @39877 has 183 MA's), (Start: 11 @39910 has 16 MA's), (Start: 12 @39916 has 70 MA's), (13, 39952), (14, 40066),

Gene: Gorge_82 Start: 50030, Stop: 50401, Start Num: 9

Candidate Starts for Gorge_82:

(Start: 9 @50030 has 183 MA's), (Start: 10 @50060 has 1 MA's), (Start: 12 @50069 has 70 MA's), (13, 50105), (14, 50219), (16, 50279), (17, 50327), (18, 50330),

Gene: Grimmer_98 Start: 50986, Stop: 51348, Start Num: 4

Candidate Starts for Grimmer_98:

(Start: 4 @50986 has 20 MA's), (Start: 9 @51013 has 183 MA's), (Start: 11 @51046 has 16 MA's), (Start: 12 @51052 has 70 MA's), (13, 51088), (14, 51202),

Gene: Hades_83 Start: 47779, Stop: 48150, Start Num: 9

Candidate Starts for Hades_83:

(Start: 9 @47779 has 183 MA's), (Start: 10 @47809 has 1 MA's), (Start: 12 @47818 has 70 MA's), (13, 47854), (14, 47968), (16, 48028), (17, 48076), (18, 48079),

Gene: Halo_56 Start: 38943, Stop: 39314, Start Num: 9

Candidate Starts for Halo_56:

(Start: 4 @38916 has 20 MA's), (Start: 9 @38943 has 183 MA's), (Start: 11 @38976 has 16 MA's), (Start: 12 @38982 has 70 MA's), (13, 39018), (14, 39132),

Gene: Hamulus_55 Start: 38658, Stop: 39029, Start Num: 9

Candidate Starts for Hamulus_55:

(Start: 9 @38658 has 183 MA's), (Start: 11 @38691 has 16 MA's), (Start: 12 @38697 has 70 MA's), (13, 38733), (14, 38847),

Gene: Harley_82 Start: 48875, Stop: 49246, Start Num: 9

Candidate Starts for Harley_82:

(Start: 9 @48875 has 183 MA's), (Start: 10 @48905 has 1 MA's), (Start: 12 @48914 has 70 MA's), (13, 48950), (14, 49064), (16, 49124), (17, 49172), (18, 49175),

Gene: Hilltopfarm_93 Start: 59628, Stop: 59999, Start Num: 9

Candidate Starts for Hilltopfarm_93:

(Start: 9 @59628 has 183 MA's), (Start: 10 @59658 has 1 MA's), (Start: 12 @59667 has 70 MA's), (13, 59703), (14, 59817), (16, 59877), (17, 59925), (18, 59928),

Gene: Hlubikazi_78 Start: 46786, Stop: 47157, Start Num: 9

Candidate Starts for Hlubikazi_78:

(Start: 9 @46786 has 183 MA's), (Start: 10 @46816 has 1 MA's), (Start: 12 @46825 has 70 MA's), (13, 46861), (14, 46975), (16, 47035), (17, 47083), (18, 47086),

Gene: Hope_57 Start: 39158, Stop: 39529, Start Num: 9

Candidate Starts for Hope_57:

(Start: 9 @39158 has 183 MA's), (Start: 10 @39188 has 1 MA's), (Start: 12 @39197 has 70 MA's), (13, 39233), (14, 39347), (16, 39407), (17, 39455), (18, 39458),

Gene: Hotshotbaby7_53 Start: 37726, Stop: 38049, Start Num: 12

Candidate Starts for Hotshotbaby7_53:

(Start: 4 @37660 has 20 MA's), (Start: 9 @37687 has 183 MA's), (Start: 11 @37720 has 16 MA's), (Start: 12 @37726 has 70 MA's), (13, 37762), (14, 37876),

Gene: IMpilo_78 Start: 47215, Stop: 47547, Start Num: 12

Candidate Starts for IMpilo_78:

(Start: 10 @47206 has 1 MA's), (Start: 12 @47215 has 70 MA's), (13, 47251), (14, 47365), (16, 47425), (17, 47473), (18, 47476),

Gene: lbOuu_78 Start: 47956, Stop: 48288, Start Num: 12

Candidate Starts for lbOuu_78:

(Start: 9 @47917 has 183 MA's), (Start: 10 @47947 has 1 MA's), (Start: 12 @47956 has 70 MA's), (13, 47992), (14, 48106), (16, 48166), (17, 48214), (18, 48217),

Gene: Ibrahim_35 Start: 30289, Stop: 29957, Start Num: 12

Candidate Starts for Ibrahim_35:

(Start: 4 @30355 has 20 MA's), (Start: 9 @30328 has 183 MA's), (Start: 11 @30295 has 16 MA's), (Start: 12 @30289 has 70 MA's), (13, 30253), (14, 30139),

Gene: ldergollasper_22 Start: 10327, Stop: 10701, Start Num: 9

Candidate Starts for ldergollasper_22:

(Start: 9 @10327 has 183 MA's), (Start: 10 @10357 has 1 MA's), (Start: 12 @10366 has 70 MA's), (13, 10402), (14, 10516), (16, 10576), (22, 10687),

Gene: Island3_51 Start: 36162, Stop: 36533, Start Num: 9

Candidate Starts for Island3_51:

(Start: 9 @36162 has 183 MA's), (Start: 10 @36192 has 1 MA's), (Start: 12 @36201 has 70 MA's), (13, 36237), (14, 36351), (16, 36411), (17, 36459), (18, 36462),

Gene: James_84 Start: 51001, Stop: 51372, Start Num: 9

Candidate Starts for James_84:

(Start: 9 @51001 has 183 MA's), (Start: 10 @51031 has 1 MA's), (Start: 12 @51040 has 70 MA's), (13, 51076), (14, 51190), (16, 51250), (17, 51298), (18, 51301),

Gene: Jane_59 Start: 39937, Stop: 40308, Start Num: 9

Candidate Starts for Jane_59:

(Start: 9 @39937 has 183 MA's), (Start: 10 @39967 has 1 MA's), (Start: 12 @39976 has 70 MA's), (13, 40012), (14, 40126), (16, 40186), (17, 40234), (18, 40237),

Gene: JangDynasty_22 Start: 10416, Stop: 10790, Start Num: 9

Candidate Starts for JangDynasty_22:

(Start: 9 @10416 has 183 MA's), (Start: 10 @10446 has 1 MA's), (Start: 12 @10455 has 70 MA's), (13, 10491), (14, 10605), (16, 10665), (22, 10776),

Gene: Jant_90 Start: 49772, Stop: 50104, Start Num: 12

Candidate Starts for Jant_90:

(Start: 9 @49733 has 183 MA's), (Start: 10 @49763 has 1 MA's), (Start: 12 @49772 has 70 MA's), (13, 49808), (14, 49922), (16, 49982), (17, 50030), (18, 50033),

Gene: Jarcob_83 Start: 50599, Stop: 50970, Start Num: 9

Candidate Starts for Jarcob_83:

(Start: 9 @50599 has 183 MA's), (Start: 10 @50629 has 1 MA's), (Start: 12 @50638 has 70 MA's), (13, 50674), (14, 50788), (16, 50848), (17, 50896), (18, 50899),

Gene: Jennelsea_73 Start: 47261, Stop: 47593, Start Num: 12

Candidate Starts for Jennelsea_73:

(Start: 4 @47195 has 20 MA's), (Start: 9 @47222 has 183 MA's), (Start: 11 @47255 has 16 MA's), (Start: 12 @47261 has 70 MA's), (13, 47297), (14, 47411),

Gene: Jinglebell_84 Start: 48864, Stop: 49235, Start Num: 9

Candidate Starts for Jinglebell_84:

(Start: 9 @48864 has 183 MA's), (Start: 10 @48894 has 1 MA's), (Start: 12 @48903 has 70 MA's), (13, 48939), (14, 49053), (16, 49113), (17, 49161), (18, 49164),

Gene: Jolene_56 Start: 39111, Stop: 39473, Start Num: 9

Candidate Starts for Jolene_56:

(Start: 4 @39084 has 20 MA's), (Start: 9 @39111 has 183 MA's), (Start: 11 @39144 has 16 MA's), (Start: 12 @39150 has 70 MA's), (13, 39186), (14, 39300),

Gene: Jonghyun_51 Start: 37660, Stop: 38049, Start Num: 4

Candidate Starts for Jonghyun_51:

(Start: 4 @37660 has 20 MA's), (Start: 9 @37687 has 183 MA's), (Start: 11 @37720 has 16 MA's), (Start: 12 @37726 has 70 MA's), (13, 37762), (14, 37876),

Gene: JorRay_58 Start: 39158, Stop: 39529, Start Num: 9

Candidate Starts for JorRay_58:

(Start: 9 @39158 has 183 MA's), (Start: 10 @39188 has 1 MA's), (Start: 12 @39197 has 70 MA's), (13, 39233), (14, 39347), (16, 39407), (17, 39455), (18, 39458),

Gene: Juice456_80 Start: 48780, Stop: 49151, Start Num: 9

Candidate Starts for Juice456_80:

(Start: 9 @48780 has 183 MA's), (Start: 10 @48810 has 1 MA's), (Start: 12 @48819 has 70 MA's), (13, 48855), (14, 48969), (16, 49029), (17, 49077), (18, 49080),

Gene: Juniper1_83 Start: 49552, Stop: 49887, Start Num: 9

Candidate Starts for Juniper1_83:

(Start: 4 @49525 has 20 MA's), (Start: 9 @49552 has 183 MA's), (Start: 11 @49585 has 16 MA's), (Start: 12 @49591 has 70 MA's), (13, 49627), (14, 49741),

Gene: Kareem_59 Start: 39937, Stop: 40308, Start Num: 9

Candidate Starts for Kareem_59:

(Start: 9 @39937 has 183 MA's), (Start: 10 @39967 has 1 MA's), (Start: 12 @39976 has 70 MA's), (13, 40012), (14, 40126), (16, 40186), (17, 40234), (18, 40237),

Gene: Kasen3_59 Start: 39926, Stop: 40297, Start Num: 9

Candidate Starts for Kasen3_59:

(Start: 9 @39926 has 183 MA's), (Start: 10 @39956 has 1 MA's), (Start: 12 @39965 has 70 MA's), (13, 40001), (14, 40115), (16, 40175), (17, 40223), (18, 40226),

Gene: Kersh_85 Start: 51387, Stop: 51758, Start Num: 9

Candidate Starts for Kersh_85:

(Start: 9 @51387 has 183 MA's), (Start: 10 @51417 has 1 MA's), (Start: 12 @51426 has 70 MA's), (13, 51462), (14, 51576), (16, 51636), (17, 51684), (18, 51687),

Gene: Kimberlium_84 Start: 48880, Stop: 49251, Start Num: 9

Candidate Starts for Kimberlium_84:

(Start: 9 @48880 has 183 MA's), (Start: 10 @48910 has 1 MA's), (Start: 12 @48919 has 70 MA's), (13, 48955), (14, 49069), (16, 49129), (17, 49177), (18, 49180),

Gene: KingJulian_82 Start: 49397, Stop: 49729, Start Num: 12

Candidate Starts for KingJulian_82:

(Start: 9 @49358 has 183 MA's), (Start: 10 @49388 has 1 MA's), (Start: 12 @49397 has 70 MA's), (13, 49433), (14, 49547), (16, 49607), (17, 49655), (18, 49658),

Gene: KingPhillip3_22 Start: 10327, Stop: 10701, Start Num: 9

Candidate Starts for KingPhillip3_22:

(Start: 9 @10327 has 183 MA's), (Start: 10 @10357 has 1 MA's), (Start: 12 @10366 has 70 MA's), (13, 10402), (14, 10516), (16, 10576), (22, 10687),

Gene: Kingsley_88 Start: 52466, Stop: 52804, Start Num: 11

Candidate Starts for Kingsley_88:

(Start: 4 @52406 has 20 MA's), (Start: 9 @52433 has 183 MA's), (Start: 11 @52466 has 16 MA's), (Start: 12 @52472 has 70 MA's), (13, 52508), (14, 52622),

Gene: Koella_71 Start: 44654, Stop: 45025, Start Num: 9

Candidate Starts for Koella_71:

(Start: 9 @44654 has 183 MA's), (Start: 10 @44684 has 1 MA's), (Start: 12 @44693 has 70 MA's), (13, 44729), (14, 44843), (16, 44903), (17, 44951), (18, 44954),

Gene: Krili_23 Start: 10686, Stop: 11060, Start Num: 9

Candidate Starts for Krili_23:

(Start: 9 @10686 has 183 MA's), (Start: 10 @10716 has 1 MA's), (Start: 12 @10725 has 70 MA's), (13, 10761), (14, 10875), (16, 10935), (22, 11046),

Gene: LastJedi_73 Start: 47229, Stop: 47600, Start Num: 9

Candidate Starts for LastJedi_73:

(Start: 9 @47229 has 183 MA's), (Start: 10 @47259 has 1 MA's), (Start: 12 @47268 has 70 MA's), (13, 47304), (14, 47418), (16, 47478), (17, 47526), (18, 47529),

Gene: Latretium_85 Start: 49190, Stop: 49522, Start Num: 12

Candidate Starts for Latretium_85:

(Start: 4 @49124 has 20 MA's), (Start: 9 @49151 has 183 MA's), (Start: 11 @49184 has 16 MA's), (Start: 12 @49190 has 70 MA's), (13, 49226), (14, 49340), (16, 49400), (17, 49448), (18, 49451),

Gene: Leozinho_81 Start: 47032, Stop: 47403, Start Num: 9

Candidate Starts for Leozinho_81:

(Start: 9 @47032 has 183 MA's), (Start: 10 @47062 has 1 MA's), (Start: 12 @47071 has 70 MA's), (13, 47107), (14, 47221), (16, 47281), (17, 47329), (18, 47332),

Gene: LilMoolah_84 Start: 50169, Stop: 50540, Start Num: 9

Candidate Starts for LilMoolah_84:

(Start: 9 @50169 has 183 MA's), (Start: 10 @50199 has 1 MA's), (Start: 12 @50208 has 70 MA's), (13, 50244), (14, 50358), (16, 50418), (17, 50466), (18, 50469),

Gene: LittleShirley_89 Start: 50387, Stop: 50719, Start Num: 12

Candidate Starts for LittleShirley_89:

(Start: 9 @50348 has 183 MA's), (Start: 10 @50378 has 1 MA's), (Start: 12 @50387 has 70 MA's), (13, 50423), (14, 50537), (16, 50597), (17, 50645), (18, 50648),

Gene: Lizziana_85 Start: 50517, Stop: 50849, Start Num: 12

Candidate Starts for Lizziana_85:

(Start: 9 @50478 has 183 MA's), (Start: 10 @50508 has 1 MA's), (Start: 12 @50517 has 70 MA's), (13, 50553), (14, 50667), (16, 50727), (17, 50775), (18, 50778),

Gene: Llama_84 Start: 48720, Stop: 49091, Start Num: 9

Candidate Starts for Llama_84:

(Start: 9 @48720 has 183 MA's), (Start: 10 @48750 has 1 MA's), (Start: 12 @48759 has 70 MA's), (13, 48795), (14, 48909), (16, 48969), (17, 49017), (18, 49020),

Gene: Llij_79 Start: 46980, Stop: 47351, Start Num: 9

Candidate Starts for Llij_79:

(Start: 9 @46980 has 183 MA's), (Start: 10 @47010 has 1 MA's), (Start: 12 @47019 has 70 MA's), (13, 47055), (14, 47169), (16, 47229), (17, 47277), (18, 47280),

Gene: LordVader_48 Start: 32102, Stop: 32440, Start Num: 11

Candidate Starts for LordVader_48:

(6, 32045), (Start: 11 @32102 has 16 MA's), (Start: 12 @32108 has 70 MA's), (13, 32144), (14, 32258),

Gene: Lorde_83 Start: 46267, Stop: 46638, Start Num: 9

Candidate Starts for Lorde_83:

(Start: 9 @46267 has 183 MA's), (Start: 10 @46297 has 1 MA's), (Start: 12 @46306 has 70 MA's), (13, 46342), (14, 46456), (16, 46516), (17, 46564), (18, 46567),

Gene: LouisV14_60 Start: 42118, Stop: 42489, Start Num: 9

Candidate Starts for LouisV14_60:

(Start: 9 @42118 has 183 MA's), (Start: 10 @42148 has 1 MA's), (Start: 12 @42157 has 70 MA's), (13, 42193), (14, 42307), (16, 42367), (17, 42415), (18, 42418),

Gene: Lucia_82 Start: 47154, Stop: 47486, Start Num: 12

Candidate Starts for Lucia_82:

(Start: 9 @47115 has 183 MA's), (Start: 10 @47145 has 1 MA's), (Start: 12 @47154 has 70 MA's), (13, 47190), (14, 47304), (16, 47364), (17, 47412), (18, 47415),

Gene: LunaBlu_87 Start: 50293, Stop: 50664, Start Num: 9

Candidate Starts for LunaBlu_87:

(Start: 9 @50293 has 183 MA's), (Start: 10 @50323 has 1 MA's), (Start: 12 @50332 has 70 MA's), (13, 50368), (14, 50482), (16, 50542), (17, 50590), (18, 50593),

Gene: MZKinsey_59 Start: 39937, Stop: 40308, Start Num: 9

Candidate Starts for MZKinsey_59:

(Start: 9 @39937 has 183 MA's), (Start: 10 @39967 has 1 MA's), (Start: 12 @39976 has 70 MA's), (13, 40012), (14, 40126), (16, 40186), (17, 40234), (18, 40237),

Gene: MadKillah_24 Start: 10719, Stop: 11093, Start Num: 9

Candidate Starts for MadKillah_24:

(Start: 9 @10719 has 183 MA's), (Start: 10 @10749 has 1 MA's), (Start: 12 @10758 has 70 MA's), (13, 10794), (14, 10908), (16, 10968), (22, 11079),

Gene: MadMen_81 Start: 48084, Stop: 48416, Start Num: 12

Candidate Starts for MadMen_81:

(Start: 9 @48045 has 183 MA's), (Start: 10 @48075 has 1 MA's), (Start: 12 @48084 has 70 MA's), (13, 48120), (14, 48234), (16, 48294), (17, 48342), (18, 48345),

Gene: Mahavrat_84 Start: 48581, Stop: 48916, Start Num: 9

Candidate Starts for Mahavrat_84:

(Start: 4 @48554 has 20 MA's), (Start: 9 @48581 has 183 MA's), (Start: 11 @48614 has 16 MA's), (Start: 12 @48620 has 70 MA's), (13, 48656), (14, 48770),

Gene: Maliketh_56 Start: 38643, Stop: 39014, Start Num: 9

Candidate Starts for Maliketh_56:

(Start: 9 @38643 has 183 MA's), (Start: 10 @38673 has 1 MA's), (Start: 12 @38682 has 70 MA's), (13, 38718), (14, 38832), (16, 38892), (17, 38940), (18, 38943),

Gene: Mandlovu_78 Start: 46728, Stop: 47099, Start Num: 9

Candidate Starts for Mandlovu_78:

(Start: 9 @46728 has 183 MA's), (Start: 10 @46758 has 1 MA's), (Start: 12 @46767 has 70 MA's), (13, 46803), (14, 46917), (16, 46977), (17, 47025), (18, 47028),

Gene: Mantra_80 Start: 49108, Stop: 49374, Start Num: 12

Candidate Starts for Mantra_80:

(Start: 9 @49069 has 183 MA's), (Start: 10 @49099 has 1 MA's), (Start: 12 @49108 has 70 MA's), (13, 49144), (14, 49258), (16, 49318),

Gene: Marmie_53 Start: 37626, Stop: 37997, Start Num: 9

Candidate Starts for Marmie_53:

(Start: 4 @37599 has 20 MA's), (Start: 9 @37626 has 183 MA's), (Start: 11 @37659 has 16 MA's), (Start: 12 @37665 has 70 MA's), (13, 37701), (14, 37815),

Gene: Martik_91 Start: 53788, Stop: 54120, Start Num: 12

Candidate Starts for Martik_91:

(Start: 4 @53722 has 20 MA's), (Start: 9 @53749 has 183 MA's), (Start: 11 @53782 has 16 MA's), (Start: 12 @53788 has 70 MA's), (13, 53824), (14, 53938),

Gene: Mattes_81 Start: 49773, Stop: 50105, Start Num: 12

Candidate Starts for Mattes_81:

(Start: 9 @49734 has 183 MA's), (Start: 10 @49764 has 1 MA's), (Start: 12 @49773 has 70 MA's), (13, 49809), (14, 49923), (16, 49983), (17, 50031), (18, 50034),

Gene: Medindi_87 Start: 50771, Stop: 51103, Start Num: 12

Candidate Starts for Medindi_87:

(Start: 9 @50732 has 183 MA's), (Start: 10 @50762 has 1 MA's), (Start: 12 @50771 has 70 MA's), (13, 50807), (14, 50921), (16, 50981), (17, 51029), (18, 51032),

Gene: Melissauren88_84 Start: 49284, Stop: 49616, Start Num: 12

Candidate Starts for Melissauren88_84:

(Start: 4 @49218 has 20 MA's), (Start: 9 @49245 has 183 MA's), (Start: 11 @49278 has 16 MA's), (Start: 12 @49284 has 70 MA's), (13, 49320), (14, 49434),

Gene: Melville_64 Start: 37454, Stop: 37786, Start Num: 12

Candidate Starts for Melville_64:

(Start: 4 @37388 has 20 MA's), (Start: 9 @37415 has 183 MA's), (Start: 11 @37448 has 16 MA's),
(Start: 12 @37454 has 70 MA's), (13, 37490), (14, 37604),

Gene: MilanaBonita_73 Start: 46918, Stop: 47250, Start Num: 12

Candidate Starts for MilanaBonita_73:

(Start: 9 @46879 has 183 MA's), (Start: 10 @46909 has 1 MA's), (Start: 12 @46918 has 70 MA's), (13,
46954), (14, 47068), (16, 47128), (17, 47176), (18, 47179),

Gene: MilleniumForce_55 Start: 39071, Stop: 39469, Start Num: 4

Candidate Starts for MilleniumForce_55:

(Start: 4 @39071 has 20 MA's), (Start: 9 @39098 has 183 MA's), (Start: 11 @39131 has 16 MA's),
(Start: 12 @39137 has 70 MA's), (14, 39287),

Gene: MinionDave_82 Start: 49981, Stop: 50352, Start Num: 9

Candidate Starts for MinionDave_82:

(Start: 9 @49981 has 183 MA's), (Start: 10 @50011 has 1 MA's), (Start: 12 @50020 has 70 MA's), (13,
50056), (14, 50170), (16, 50230), (17, 50278), (18, 50281),

Gene: Minnie_87 Start: 53340, Stop: 53738, Start Num: 4

Candidate Starts for Minnie_87:

(Start: 4 @53340 has 20 MA's), (Start: 9 @53367 has 183 MA's), (Start: 11 @53400 has 16 MA's),
(Start: 12 @53406 has 70 MA's), (13, 53442), (14, 53556),

Gene: Misha28_60 Start: 39332, Stop: 39664, Start Num: 12

Candidate Starts for Misha28_60:

(Start: 9 @39293 has 183 MA's), (Start: 10 @39323 has 1 MA's), (Start: 12 @39332 has 70 MA's), (13,
39368), (14, 39482), (16, 39542), (17, 39590), (18, 39593),

Gene: MisterCuddles_81 Start: 49497, Stop: 49802, Start Num: 9

Candidate Starts for MisterCuddles_81:

(Start: 9 @49497 has 183 MA's), (Start: 10 @49527 has 1 MA's), (Start: 12 @49536 has 70 MA's), (13,
49572), (14, 49686), (16, 49746),

Gene: Modragons_82 Start: 48747, Stop: 49079, Start Num: 12

Candidate Starts for Modragons_82:

(Start: 9 @48708 has 183 MA's), (Start: 10 @48738 has 1 MA's), (Start: 12 @48747 has 70 MA's), (13,
48783), (14, 48897), (16, 48957), (17, 49005), (18, 49008),

Gene: Moonbeam_81 Start: 49081, Stop: 49452, Start Num: 9

Candidate Starts for Moonbeam_81:

(Start: 9 @49081 has 183 MA's), (Start: 10 @49111 has 1 MA's), (Start: 12 @49120 has 70 MA's), (13,
49156), (14, 49270), (16, 49330), (17, 49378), (18, 49381),

Gene: Mori_23 Start: 10557, Stop: 10931, Start Num: 9

Candidate Starts for Mori_23:

(Start: 9 @10557 has 183 MA's), (Start: 10 @10587 has 1 MA's), (Start: 12 @10596 has 70 MA's), (13,
10632), (14, 10746), (16, 10806), (22, 10917),

Gene: Mova_82 Start: 48387, Stop: 48758, Start Num: 9

Candidate Starts for Mova_82:

(Start: 9 @48387 has 183 MA's), (Start: 10 @48417 has 1 MA's), (Start: 12 @48426 has 70 MA's), (13, 48462), (14, 48576), (16, 48636), (17, 48684), (18, 48687),

Gene: Mowgli_53 Start: 37665, Stop: 37997, Start Num: 12

Candidate Starts for Mowgli_53:

(Start: 4 @37599 has 20 MA's), (Start: 9 @37626 has 183 MA's), (Start: 11 @37659 has 16 MA's), (Start: 12 @37665 has 70 MA's), (13, 37701), (14, 37815),

Gene: MulchExplorer_82 Start: 48590, Stop: 48922, Start Num: 12

Candidate Starts for MulchExplorer_82:

(Start: 9 @48551 has 183 MA's), (Start: 10 @48581 has 1 MA's), (Start: 12 @48590 has 70 MA's), (13, 48626), (14, 48740), (16, 48800), (17, 48848), (18, 48851),

Gene: MulchSalad_89 Start: 50988, Stop: 51320, Start Num: 12

Candidate Starts for MulchSalad_89:

(Start: 10 @50979 has 1 MA's), (Start: 12 @50988 has 70 MA's), (13, 51024), (14, 51138), (16, 51198), (17, 51246), (18, 51249),

Gene: Murai_23 Start: 10558, Stop: 10932, Start Num: 9

Candidate Starts for Murai_23:

(Start: 9 @10558 has 183 MA's), (Start: 10 @10588 has 1 MA's), (Start: 12 @10597 has 70 MA's), (13, 10633), (14, 10747), (16, 10807), (22, 10918),

Gene: Mwanjiwa_91 Start: 51454, Stop: 51873, Start Num: 3

Candidate Starts for Mwanjiwa_91:

(3, 51454), (Start: 11 @51535 has 16 MA's), (Start: 12 @51541 has 70 MA's), (13, 51577), (14, 51691),

Gene: Neoh_45 Start: 34999, Stop: 35370, Start Num: 9

Candidate Starts for Neoh_45:

(Start: 4 @34972 has 20 MA's), (Start: 9 @34999 has 183 MA's), (Start: 11 @35032 has 16 MA's), (Start: 12 @35038 has 70 MA's), (13, 35074), (14, 35188),

Gene: NewHope4_87 Start: 48388, Stop: 48759, Start Num: 9

Candidate Starts for NewHope4_87:

(Start: 9 @48388 has 183 MA's), (Start: 10 @48418 has 1 MA's), (Start: 12 @48427 has 70 MA's), (13, 48463), (14, 48577), (16, 48637), (17, 48685), (18, 48688),

Gene: Nichirin_78 Start: 48121, Stop: 48453, Start Num: 12

Candidate Starts for Nichirin_78:

(Start: 9 @48082 has 183 MA's), (Start: 10 @48112 has 1 MA's), (Start: 12 @48121 has 70 MA's), (13, 48157), (14, 48271), (16, 48331), (17, 48379), (18, 48382),

Gene: NiebruSaylor_23 Start: 10558, Stop: 10932, Start Num: 9

Candidate Starts for NiebruSaylor_23:

(Start: 9 @10558 has 183 MA's), (Start: 10 @10588 has 1 MA's), (Start: 12 @10597 has 70 MA's), (13, 10633), (14, 10747), (16, 10807), (22, 10918),

Gene: Nivrat_82 Start: 50042, Stop: 50413, Start Num: 9

Candidate Starts for Nivrat_82:

(Start: 9 @50042 has 183 MA's), (Start: 10 @50072 has 1 MA's), (Start: 12 @50081 has 70 MA's), (13, 50117), (14, 50231), (16, 50291), (17, 50339), (18, 50342),

Gene: NormanBulbieJr_76 Start: 48668, Stop: 49039, Start Num: 9

Candidate Starts for NormanBulbieJr_76:

(Start: 9 @48668 has 183 MA's), (Start: 10 @48698 has 1 MA's), (Start: 12 @48707 has 70 MA's), (13, 48743), (14, 48857), (16, 48917), (17, 48965), (18, 48968),

Gene: Ochi17_83 Start: 48315, Stop: 48686, Start Num: 9

Candidate Starts for Ochi17_83:

(Start: 9 @48315 has 183 MA's), (Start: 10 @48345 has 1 MA's), (Start: 12 @48354 has 70 MA's), (13, 48390), (14, 48504), (16, 48564), (17, 48612), (18, 48615),

Gene: OctaviousRex_57 Start: 39853, Stop: 40224, Start Num: 9

Candidate Starts for OctaviousRex_57:

(Start: 9 @39853 has 183 MA's), (Start: 10 @39883 has 1 MA's), (Start: 12 @39892 has 70 MA's), (13, 39928), (14, 40042), (16, 40102), (17, 40150), (18, 40153),

Gene: OfUltron_85 Start: 48864, Stop: 49235, Start Num: 9

Candidate Starts for OfUltron_85:

(Start: 9 @48864 has 183 MA's), (Start: 10 @48894 has 1 MA's), (Start: 12 @48903 has 70 MA's), (13, 48939), (14, 49053), (16, 49113), (17, 49161), (18, 49164),

Gene: Ogopogo_52 Start: 36584, Stop: 36955, Start Num: 9

Candidate Starts for Ogopogo_52:

(Start: 9 @36584 has 183 MA's), (Start: 10 @36614 has 1 MA's), (Start: 12 @36623 has 70 MA's), (13, 36659), (14, 36773), (16, 36833), (17, 36881), (18, 36884),

Gene: Oksu_84 Start: 50414, Stop: 50746, Start Num: 12

Candidate Starts for Oksu_84:

(Start: 9 @50375 has 183 MA's), (Start: 10 @50405 has 1 MA's), (Start: 12 @50414 has 70 MA's), (13, 50450), (14, 50564), (16, 50624), (17, 50672), (18, 50675),

Gene: Olga_59 Start: 39909, Stop: 40247, Start Num: 11

Candidate Starts for Olga_59:

(Start: 4 @39849 has 20 MA's), (Start: 9 @39876 has 183 MA's), (Start: 11 @39909 has 16 MA's), (Start: 12 @39915 has 70 MA's), (13, 39951), (14, 40065),

Gene: OlympiaSaint_83 Start: 49943, Stop: 50314, Start Num: 9

Candidate Starts for OlympiaSaint_83:

(Start: 9 @49943 has 183 MA's), (Start: 10 @49973 has 1 MA's), (Start: 12 @49982 has 70 MA's), (13, 50018), (14, 50132), (16, 50192), (17, 50240), (18, 50243),

Gene: Ovechkin_51 Start: 37481, Stop: 37813, Start Num: 12

Candidate Starts for Ovechkin_51:

(Start: 4 @37415 has 20 MA's), (Start: 9 @37442 has 183 MA's), (Start: 11 @37475 has 16 MA's), (Start: 12 @37481 has 70 MA's), (13, 37517), (14, 37631),

Gene: OwlsT2W_82 Start: 48750, Stop: 49121, Start Num: 9

Candidate Starts for OwlsT2W_82:

(Start: 9 @48750 has 183 MA's), (Start: 10 @48780 has 1 MA's), (Start: 12 @48789 has 70 MA's), (13, 48825), (14, 48939), (15, 48996), (16, 48999), (17, 49047), (18, 49050),

Gene: PMC_80 Start: 48476, Stop: 48808, Start Num: 12

Candidate Starts for PMC_80:

(Start: 9 @48437 has 183 MA's), (Start: 10 @48467 has 1 MA's), (Start: 12 @48476 has 70 MA's), (13, 48512), (14, 48626), (16, 48686), (17, 48734), (18, 48737),

Gene: PR_69 Start: 50566, Stop: 50937, Start Num: 9

Candidate Starts for PR_69:

(Start: 9 @50566 has 183 MA's), (Start: 10 @50596 has 1 MA's), (Start: 12 @50605 has 70 MA's), (13, 50641), (14, 50755), (16, 50815), (17, 50863), (18, 50866),

Gene: Pacc40_75 Start: 49133, Stop: 49504, Start Num: 9

Candidate Starts for Pacc40_75:

(Start: 9 @49133 has 183 MA's), (Start: 10 @49163 has 1 MA's), (Start: 12 @49172 has 70 MA's), (13, 49208), (14, 49322), (16, 49382), (17, 49430), (18, 49433),

Gene: Parmesanjohn_59 Start: 37903, Stop: 38235, Start Num: 12

Candidate Starts for Parmesanjohn_59:

(Start: 4 @37837 has 20 MA's), (Start: 9 @37864 has 183 MA's), (Start: 11 @37897 has 16 MA's), (Start: 12 @37903 has 70 MA's), (13, 37939), (14, 38053),

Gene: PatoPoderoso_76 Start: 49397, Stop: 49729, Start Num: 12

Candidate Starts for PatoPoderoso_76:

(Start: 9 @49358 has 183 MA's), (Start: 10 @49388 has 1 MA's), (Start: 12 @49397 has 70 MA's), (13, 49433), (14, 49547), (16, 49607), (17, 49655), (18, 49658),

Gene: Peeb_54 Start: 38273, Stop: 38644, Start Num: 9

Candidate Starts for Peeb_54:

(Start: 9 @38273 has 183 MA's), (Start: 10 @38303 has 1 MA's), (Start: 12 @38312 has 70 MA's), (13, 38348), (14, 38462), (16, 38522), (17, 38570), (18, 38573),

Gene: Peridot_87 Start: 50102, Stop: 50434, Start Num: 12

Candidate Starts for Peridot_87:

(Start: 9 @50063 has 183 MA's), (Start: 10 @50093 has 1 MA's), (Start: 12 @50102 has 70 MA's), (13, 50138), (14, 50252), (16, 50312), (17, 50360), (18, 50363),

Gene: Periodt_54 Start: 38465, Stop: 38836, Start Num: 9

Candidate Starts for Periodt_54:

(Start: 9 @38465 has 183 MA's), (Start: 10 @38495 has 1 MA's), (Start: 12 @38504 has 70 MA's), (13, 38540), (14, 38654), (16, 38714), (17, 38762), (18, 38765),

Gene: Phalconet_80 Start: 48566, Stop: 48937, Start Num: 9

Candidate Starts for Phalconet_80:

(Start: 9 @48566 has 183 MA's), (Start: 10 @48596 has 1 MA's), (Start: 12 @48605 has 70 MA's), (13, 48641), (14, 48755), (16, 48815), (17, 48863), (18, 48866),

Gene: Phanphagia_82 Start: 49940, Stop: 50311, Start Num: 9

Candidate Starts for Phanphagia_82:

(Start: 9 @49940 has 183 MA's), (Start: 10 @49970 has 1 MA's), (Start: 12 @49979 has 70 MA's), (13, 50015), (14, 50129), (16, 50189), (17, 50237), (18, 50240),

Gene: Phasih_76 Start: 47316, Stop: 47648, Start Num: 12

Candidate Starts for Phasih_76:

(Start: 9 @47277 has 183 MA's), (Start: 10 @47307 has 1 MA's), (Start: 12 @47316 has 70 MA's), (13, 47352), (14, 47466), (16, 47526), (17, 47574), (18, 47577),

Gene: Phatniss_80 Start: 48075, Stop: 48446, Start Num: 9

Candidate Starts for Phatniss_80:

(Start: 9 @48075 has 183 MA's), (Start: 10 @48105 has 1 MA's), (Start: 12 @48114 has 70 MA's), (13, 48150), (14, 48264), (16, 48324), (17, 48372), (18, 48375),

Gene: PhesterPhotato_87 Start: 49734, Stop: 50105, Start Num: 9
Candidate Starts for PhesterPhotato_87:

(Start: 9 @49734 has 183 MA's), (Start: 10 @49764 has 1 MA's), (Start: 12 @49773 has 70 MA's), (13, 49809), (14, 49923), (16, 49983), (17, 50031), (18, 50034),

Gene: Philonius_59 Start: 38062, Stop: 38400, Start Num: 11
Candidate Starts for Philonius_59:

(Start: 4 @38002 has 20 MA's), (Start: 9 @38029 has 183 MA's), (Start: 11 @38062 has 16 MA's), (Start: 12 @38068 has 70 MA's), (13, 38104), (14, 38218),

Gene: Philus_86 Start: 51681, Stop: 52013, Start Num: 12
Candidate Starts for Philus_86:

(Start: 9 @51642 has 183 MA's), (Start: 10 @51672 has 1 MA's), (Start: 12 @51681 has 70 MA's), (13, 51717), (14, 51831), (16, 51891), (17, 51939), (18, 51942),

Gene: Phish_55 Start: 38643, Stop: 39014, Start Num: 9
Candidate Starts for Phish_55:

(Start: 9 @38643 has 183 MA's), (Start: 10 @38673 has 1 MA's), (Start: 12 @38682 has 70 MA's), (13, 38718), (14, 38832), (16, 38892), (17, 38940), (18, 38943),

Gene: Phloss_57 Start: 37304, Stop: 37642, Start Num: 11
Candidate Starts for Phloss_57:

(Start: 4 @37244 has 20 MA's), (Start: 9 @37271 has 183 MA's), (Start: 11 @37304 has 16 MA's), (Start: 12 @37310 has 70 MA's), (13, 37346), (14, 37460),

Gene: Phreak_53 Start: 37648, Stop: 38019, Start Num: 9
Candidate Starts for Phreak_53:

(Start: 9 @37648 has 183 MA's), (Start: 10 @37678 has 1 MA's), (Start: 12 @37687 has 70 MA's), (13, 37723), (14, 37837), (16, 37897), (17, 37945), (18, 37948),

Gene: PinkYoshi_58 Start: 39867, Stop: 40238, Start Num: 9
Candidate Starts for PinkYoshi_58:

(Start: 4 @39840 has 20 MA's), (Start: 9 @39867 has 183 MA's), (Start: 11 @39900 has 16 MA's), (Start: 12 @39906 has 70 MA's), (13, 39942), (14, 40056),

Gene: Piper2020_63 Start: 40188, Stop: 40559, Start Num: 9
Candidate Starts for Piper2020_63:

(Start: 9 @40188 has 183 MA's), (Start: 10 @40218 has 1 MA's), (Start: 12 @40227 has 70 MA's), (13, 40263), (14, 40377), (16, 40437), (17, 40485), (18, 40488),

Gene: Pippy_78 Start: 48138, Stop: 48509, Start Num: 9
Candidate Starts for Pippy_78:

(Start: 9 @48138 has 183 MA's), (Start: 10 @48168 has 1 MA's), (Start: 12 @48177 has 70 MA's), (13, 48213), (14, 48327), (16, 48387), (17, 48435), (18, 48438),

Gene: Pipsqueaks_60 Start: 37875, Stop: 38213, Start Num: 11
Candidate Starts for Pipsqueaks_60:

(Start: 4 @37815 has 20 MA's), (Start: 9 @37842 has 183 MA's), (Start: 11 @37875 has 16 MA's), (Start: 12 @37881 has 70 MA's), (13, 37917), (14, 38031),

Gene: Plagueis_53 Start: 37485, Stop: 37817, Start Num: 12

Candidate Starts for Plagueis_53:

(Start: 4 @37419 has 20 MA's), (Start: 9 @37446 has 183 MA's), (Start: 11 @37479 has 16 MA's),
(Start: 12 @37485 has 70 MA's), (13, 37521), (14, 37635),

Gene: Plumbus_84 Start: 46988, Stop: 47329, Start Num: 10

Candidate Starts for Plumbus_84:

(Start: 9 @46958 has 183 MA's), (Start: 10 @46988 has 1 MA's), (Start: 12 @46997 has 70 MA's), (13,
47033), (14, 47147), (16, 47207), (17, 47255), (18, 47258),

Gene: Polkaroo_75 Start: 46717, Stop: 47088, Start Num: 9

Candidate Starts for Polkaroo_75:

(Start: 4 @46690 has 20 MA's), (Start: 9 @46717 has 183 MA's), (Start: 11 @46750 has 16 MA's),
(Start: 12 @46756 has 70 MA's), (13, 46792), (14, 46906),

Gene: Polo2Bam_93 Start: 48281, Stop: 48613, Start Num: 12

Candidate Starts for Polo2Bam_93:

(Start: 9 @48242 has 183 MA's), (Start: 10 @48272 has 1 MA's), (Start: 12 @48281 has 70 MA's), (13,
48317), (14, 48431), (16, 48491), (17, 48539), (18, 48542),

Gene: PopTart_75 Start: 46629, Stop: 47000, Start Num: 9

Candidate Starts for PopTart_75:

(Start: 9 @46629 has 183 MA's), (Start: 10 @46659 has 1 MA's), (Start: 12 @46668 has 70 MA's), (13,
46704), (14, 46818), (16, 46878), (17, 46926), (18, 46929),

Gene: Priscilla_78 Start: 48805, Stop: 49137, Start Num: 12

Candidate Starts for Priscilla_78:

(Start: 9 @48766 has 183 MA's), (Start: 10 @48796 has 1 MA's), (Start: 12 @48805 has 70 MA's), (13,
48841), (14, 48955), (16, 49015), (17, 49063), (18, 49066),

Gene: QueenHazel_64 Start: 42803, Stop: 43201, Start Num: 4

Candidate Starts for QueenHazel_64:

(Start: 4 @42803 has 20 MA's), (Start: 9 @42830 has 183 MA's), (Start: 11 @42863 has 16 MA's),
(Start: 12 @42869 has 70 MA's), (13, 42905), (14, 43019),

Gene: QuickMath_82 Start: 49171, Stop: 49503, Start Num: 12

Candidate Starts for QuickMath_82:

(Start: 9 @49132 has 183 MA's), (Start: 10 @49162 has 1 MA's), (Start: 12 @49171 has 70 MA's), (13,
49207), (14, 49321), (16, 49381), (17, 49429), (18, 49432),

Gene: Quico_89 Start: 50922, Stop: 51254, Start Num: 12

Candidate Starts for Quico_89:

(Start: 9 @50883 has 183 MA's), (Start: 10 @50913 has 1 MA's), (Start: 12 @50922 has 70 MA's), (13,
50958), (14, 51072), (16, 51132), (17, 51180), (18, 51183),

Gene: Remy19_56 Start: 38643, Stop: 39014, Start Num: 9

Candidate Starts for Remy19_56:

(Start: 9 @38643 has 183 MA's), (Start: 10 @38673 has 1 MA's), (Start: 12 @38682 has 70 MA's), (13,
38718), (14, 38832), (16, 38892), (17, 38940), (18, 38943),

Gene: Rialto_87 Start: 49926, Stop: 50297, Start Num: 9

Candidate Starts for Rialto_87:

(Start: 9 @49926 has 183 MA's), (Start: 10 @49956 has 1 MA's), (Start: 12 @49965 has 70 MA's), (13, 50001), (14, 50115), (16, 50175), (17, 50223), (18, 50226),

Gene: Rita_90 Start: 52291, Stop: 52662, Start Num: 9

Candidate Starts for Rita_90:

(Start: 9 @52291 has 183 MA's), (Start: 10 @52321 has 1 MA's), (Start: 12 @52330 has 70 MA's), (13, 52366), (14, 52480), (16, 52540), (17, 52588), (18, 52591),

Gene: Rockne_84 Start: 48449, Stop: 48820, Start Num: 9

Candidate Starts for Rockne_84:

(Start: 9 @48449 has 183 MA's), (Start: 10 @48479 has 1 MA's), (Start: 12 @48488 has 70 MA's), (13, 48524), (14, 48638), (16, 48698), (17, 48746), (18, 48749),

Gene: RockyHorror_81 Start: 47659, Stop: 47991, Start Num: 12

Candidate Starts for RockyHorror_81:

(Start: 9 @47620 has 183 MA's), (Start: 10 @47650 has 1 MA's), (Start: 12 @47659 has 70 MA's), (13, 47695), (14, 47809), (16, 47869), (17, 47917), (18, 47920),

Gene: RonRayGun_35 Start: 30289, Stop: 29957, Start Num: 12

Candidate Starts for RonRayGun_35:

(Start: 4 @30355 has 20 MA's), (Start: 9 @30328 has 183 MA's), (Start: 11 @30295 has 16 MA's), (Start: 12 @30289 has 70 MA's), (13, 30253), (14, 30139),

Gene: Royals2015_88 Start: 49231, Stop: 49602, Start Num: 9

Candidate Starts for Royals2015_88:

(Start: 9 @49231 has 183 MA's), (Start: 10 @49261 has 1 MA's), (Start: 12 @49270 has 70 MA's), (13, 49306), (14, 49420), (16, 49480), (17, 49528), (18, 49531),

Gene: Ruby_78 Start: 49498, Stop: 49803, Start Num: 9

Candidate Starts for Ruby_78:

(Start: 9 @49498 has 183 MA's), (Start: 10 @49528 has 1 MA's), (Start: 12 @49537 has 70 MA's), (13, 49573), (14, 49687), (16, 49747),

Gene: Ruriko_53 Start: 37660, Stop: 38049, Start Num: 4

Candidate Starts for Ruriko_53:

(Start: 4 @37660 has 20 MA's), (Start: 9 @37687 has 183 MA's), (Start: 11 @37720 has 16 MA's), (Start: 12 @37726 has 70 MA's), (13, 37762), (14, 37876),

Gene: Ryadel_25 Start: 11140, Stop: 11514, Start Num: 9

Candidate Starts for Ryadel_25:

(Start: 9 @11140 has 183 MA's), (Start: 10 @11170 has 1 MA's), (Start: 12 @11179 has 70 MA's), (13, 11215), (14, 11329), (16, 11389), (22, 11500),

Gene: Saal_79 Start: 49849, Stop: 50220, Start Num: 9

Candidate Starts for Saal_79:

(Start: 9 @49849 has 183 MA's), (Start: 10 @49879 has 1 MA's), (Start: 12 @49888 has 70 MA's), (13, 49924), (14, 50038), (16, 50098), (17, 50146), (18, 50149),

Gene: Sabbb_85 Start: 47362, Stop: 47733, Start Num: 9

Candidate Starts for Sabbb_85:

(Start: 9 @47362 has 183 MA's), (Start: 10 @47392 has 1 MA's), (Start: 12 @47401 has 70 MA's), (13, 47437), (14, 47551), (16, 47611), (17, 47659), (18, 47662),

Gene: Sandalphon_88 Start: 52006, Stop: 52365, Start Num: 9

Candidate Starts for Sandalphon_88:

(Start: 4 @51979 has 20 MA's), (Start: 9 @52006 has 183 MA's), (Start: 11 @52039 has 16 MA's),
(Start: 12 @52045 has 70 MA's), (13, 52081), (14, 52195),

Gene: Sarma624_83 Start: 46478, Stop: 46816, Start Num: 11

Candidate Starts for Sarma624_83:

(Start: 4 @46418 has 20 MA's), (Start: 9 @46445 has 183 MA's), (Start: 11 @46478 has 16 MA's),
(Start: 12 @46484 has 70 MA's), (13, 46520), (14, 46634),

Gene: SassyB_75 Start: 46629, Stop: 47000, Start Num: 9

Candidate Starts for SassyB_75:

(Start: 9 @46629 has 183 MA's), (Start: 10 @46659 has 1 MA's), (Start: 12 @46668 has 70 MA's), (13,
46704), (14, 46818), (16, 46878), (17, 46926), (18, 46929),

Gene: Schnauzer_60 Start: 37897, Stop: 38235, Start Num: 11

Candidate Starts for Schnauzer_60:

(Start: 4 @37837 has 20 MA's), (Start: 9 @37864 has 183 MA's), (Start: 11 @37897 has 16 MA's),
(Start: 12 @37903 has 70 MA's), (13, 37939), (14, 38053),

Gene: SchoolBus_22 Start: 10327, Stop: 10701, Start Num: 9

Candidate Starts for SchoolBus_22:

(Start: 9 @10327 has 183 MA's), (Start: 10 @10357 has 1 MA's), (Start: 12 @10366 has 70 MA's), (13,
10402), (14, 10516), (16, 10576), (22, 10687),

Gene: Schuy_24 Start: 10719, Stop: 11093, Start Num: 9

Candidate Starts for Schuy_24:

(Start: 9 @10719 has 183 MA's), (Start: 10 @10749 has 1 MA's), (Start: 12 @10758 has 70 MA's), (13,
10794), (14, 10908), (16, 10968), (22, 11079),

Gene: Scitech_53 Start: 37539, Stop: 37871, Start Num: 12

Candidate Starts for Scitech_53:

(Start: 9 @37500 has 183 MA's), (Start: 10 @37530 has 1 MA's), (Start: 12 @37539 has 70 MA's), (13,
37575), (14, 37689), (16, 37749), (17, 37797), (18, 37800),

Gene: SeaLumen_90 Start: 48281, Stop: 48613, Start Num: 12

Candidate Starts for SeaLumen_90:

(Start: 9 @48242 has 183 MA's), (Start: 10 @48272 has 1 MA's), (Start: 12 @48281 has 70 MA's), (13,
48317), (14, 48431), (16, 48491), (17, 48539), (18, 48542),

Gene: Seabastian_85 Start: 48865, Stop: 49236, Start Num: 9

Candidate Starts for Seabastian_85:

(Start: 9 @48865 has 183 MA's), (Start: 10 @48895 has 1 MA's), (Start: 12 @48904 has 70 MA's), (13,
48940), (14, 49054), (16, 49114), (17, 49162), (18, 49165),

Gene: Seagreen_82 Start: 49771, Stop: 50103, Start Num: 12

Candidate Starts for Seagreen_82:

(Start: 9 @49732 has 183 MA's), (Start: 10 @49762 has 1 MA's), (Start: 12 @49771 has 70 MA's), (13,
49807), (14, 49921), (16, 49981), (17, 50029), (18, 50032),

Gene: ShaboiShabazz_55 Start: 38643, Stop: 39014, Start Num: 9

Candidate Starts for ShaboiShabazz_55:

(Start: 9 @38643 has 183 MA's), (Start: 10 @38673 has 1 MA's), (Start: 12 @38682 has 70 MA's), (13, 38718), (14, 38832), (16, 38892), (17, 38940), (18, 38943),

Gene: ShiLan_83 Start: 51456, Stop: 51827, Start Num: 9

Candidate Starts for ShiLan_83:

(Start: 9 @51456 has 183 MA's), (Start: 10 @51486 has 1 MA's), (Start: 12 @51495 has 70 MA's), (13, 51531), (14, 51645), (16, 51705), (17, 51753), (18, 51756),

Gene: Shida_23 Start: 10624, Stop: 10998, Start Num: 9

Candidate Starts for Shida_23:

(Start: 9 @10624 has 183 MA's), (Start: 10 @10654 has 1 MA's), (Start: 12 @10663 has 70 MA's), (13, 10699), (14, 10813), (16, 10873), (22, 10984),

Gene: ShowerHandel_93 Start: 51978, Stop: 52310, Start Num: 12

Candidate Starts for ShowerHandel_93:

(Start: 4 @51912 has 20 MA's), (Start: 9 @51939 has 183 MA's), (Start: 11 @51972 has 16 MA's), (Start: 12 @51978 has 70 MA's), (13, 52014), (14, 52128),

Gene: SiSi_79 Start: 48633, Stop: 48899, Start Num: 12

Candidate Starts for SiSi_79:

(Start: 9 @48594 has 183 MA's), (Start: 10 @48624 has 1 MA's), (Start: 12 @48633 has 70 MA's), (13, 48669), (14, 48783), (16, 48843),

Gene: Silvafighter_60 Start: 37440, Stop: 37778, Start Num: 11

Candidate Starts for Silvafighter_60:

(Start: 4 @37380 has 20 MA's), (Start: 9 @37407 has 183 MA's), (Start: 11 @37440 has 16 MA's), (Start: 12 @37446 has 70 MA's), (13, 37482), (14, 37596),

Gene: SilverChicken_47 Start: 31179, Stop: 30781, Start Num: 4

Candidate Starts for SilverChicken_47:

(Start: 4 @31179 has 20 MA's), (Start: 9 @31152 has 183 MA's), (Start: 11 @31119 has 16 MA's), (Start: 12 @31113 has 70 MA's), (13, 31077), (14, 30963),

Gene: Silvy_55 Start: 38473, Stop: 38871, Start Num: 4

Candidate Starts for Silvy_55:

(Start: 4 @38473 has 20 MA's), (Start: 9 @38500 has 183 MA's), (Start: 11 @38533 has 16 MA's), (Start: 12 @38539 has 70 MA's), (13, 38575), (14, 38689),

Gene: Sizemore_59 Start: 39926, Stop: 40297, Start Num: 9

Candidate Starts for Sizemore_59:

(Start: 9 @39926 has 183 MA's), (Start: 10 @39956 has 1 MA's), (Start: 12 @39965 has 70 MA's), (13, 40001), (14, 40115), (16, 40175), (17, 40223), (18, 40226),

Gene: Slim_85 Start: 49146, Stop: 49517, Start Num: 9

Candidate Starts for Slim_85:

(Start: 9 @49146 has 183 MA's), (Start: 10 @49176 has 1 MA's), (Start: 12 @49185 has 70 MA's), (13, 49221), (14, 49335), (16, 49395), (17, 49443), (18, 49446),

Gene: Smooch_26 Start: 12102, Stop: 12401, Start Num: 8

Candidate Starts for Smooch_26:

(1, 11931), (2, 11970), (5, 12093), (7, 12096), (Start: 8 @12102 has 1 MA's), (Start: 10 @12144 has 1 MA's), (Start: 12 @12153 has 70 MA's), (13, 12189), (14, 12303), (16, 12363),

Gene: Smurph_59 Start: 37903, Stop: 38235, Start Num: 12

Candidate Starts for Smurph_59:

(Start: 4 @37837 has 20 MA's), (Start: 9 @37864 has 183 MA's), (Start: 11 @37897 has 16 MA's),
(Start: 12 @37903 has 70 MA's), (13, 37939), (14, 38053),

Gene: Sparkdehlily_62 Start: 39634, Stop: 40032, Start Num: 4

Candidate Starts for Sparkdehlily_62:

(Start: 4 @39634 has 20 MA's), (Start: 9 @39661 has 183 MA's), (Start: 11 @39694 has 16 MA's),
(Start: 12 @39700 has 70 MA's), (13, 39736), (14, 39850),

Gene: Spoonbill_79 Start: 47408, Stop: 47740, Start Num: 12

Candidate Starts for Spoonbill_79:

(Start: 9 @47369 has 183 MA's), (Start: 10 @47399 has 1 MA's), (Start: 12 @47408 has 70 MA's), (13,
47444), (14, 47558), (16, 47618), (17, 47666), (18, 47669),

Gene: Starcevich_83 Start: 50629, Stop: 51000, Start Num: 9

Candidate Starts for Starcevich_83:

(Start: 9 @50629 has 183 MA's), (Start: 10 @50659 has 1 MA's), (Start: 12 @50668 has 70 MA's), (13,
50704), (14, 50818), (16, 50878), (17, 50926), (18, 50929),

Gene: Strokeseat_78 Start: 46785, Stop: 47156, Start Num: 9

Candidate Starts for Strokeseat_78:

(Start: 9 @46785 has 183 MA's), (Start: 10 @46815 has 1 MA's), (Start: 12 @46824 has 70 MA's), (13,
46860), (14, 46974), (16, 47034), (17, 47082), (18, 47085),

Gene: SwagPiggett_84 Start: 50985, Stop: 51356, Start Num: 9

Candidate Starts for SwagPiggett_84:

(Start: 9 @50985 has 183 MA's), (Start: 10 @51015 has 1 MA's), (Start: 12 @51024 has 70 MA's), (13,
51060), (14, 51174), (16, 51234), (17, 51282), (18, 51285),

Gene: Sweets_58 Start: 39932, Stop: 40303, Start Num: 9

Candidate Starts for Sweets_58:

(Start: 9 @39932 has 183 MA's), (Start: 10 @39962 has 1 MA's), (Start: 12 @39971 has 70 MA's), (13,
40007), (14, 40121), (16, 40181), (17, 40229), (18, 40232),

Gene: TDanisky_62 Start: 39634, Stop: 40032, Start Num: 4

Candidate Starts for TDanisky_62:

(Start: 4 @39634 has 20 MA's), (Start: 9 @39661 has 183 MA's), (Start: 11 @39694 has 16 MA's),
(Start: 12 @39700 has 70 MA's), (13, 39736), (14, 39850),

Gene: Taj_90 Start: 51483, Stop: 51854, Start Num: 9

Candidate Starts for Taj_90:

(Start: 9 @51483 has 183 MA's), (Start: 10 @51513 has 1 MA's), (Start: 12 @51522 has 70 MA's), (13,
51558), (14, 51672), (16, 51732), (17, 51780), (18, 51783),

Gene: Taptic_68 Start: 49502, Stop: 49873, Start Num: 9

Candidate Starts for Taptic_68:

(Start: 9 @49502 has 183 MA's), (Start: 10 @49532 has 1 MA's), (Start: 12 @49541 has 70 MA's), (13,
49577), (14, 49691), (16, 49751), (17, 49799), (18, 49802),

Gene: Tessdabest_59 Start: 38036, Stop: 38368, Start Num: 12

Candidate Starts for Tessdabest_59:

(Start: 4 @37970 has 20 MA's), (Start: 9 @37997 has 183 MA's), (Start: 11 @38030 has 16 MA's),
(Start: 12 @38036 has 70 MA's), (13, 38072), (14, 38186),

Gene: ThetaBob_82 Start: 48204, Stop: 48536, Start Num: 12
Candidate Starts for ThetaBob_82:

(Start: 9 @48165 has 183 MA's), (Start: 10 @48195 has 1 MA's), (Start: 12 @48204 has 70 MA's), (13,
48240), (14, 48354), (16, 48414), (17, 48462), (18, 48465),

Gene: TinaBug_56 Start: 38943, Stop: 39314, Start Num: 9
Candidate Starts for TinaBug_56:

(Start: 4 @38916 has 20 MA's), (Start: 9 @38943 has 183 MA's), (Start: 11 @38976 has 16 MA's),
(Start: 12 @38982 has 70 MA's), (13, 39018), (14, 39132),

Gene: TomBrady_56 Start: 38644, Stop: 39015, Start Num: 9
Candidate Starts for TomBrady_56:

(Start: 9 @38644 has 183 MA's), (Start: 10 @38674 has 1 MA's), (Start: 12 @38683 has 70 MA's), (13,
38719), (14, 38833), (16, 38893), (17, 38941), (18, 38944),

Gene: TootsiePop_60 Start: 39332, Stop: 39664, Start Num: 12
Candidate Starts for TootsiePop_60:

(Start: 9 @39293 has 183 MA's), (Start: 10 @39323 has 1 MA's), (Start: 12 @39332 has 70 MA's), (13,
39368), (14, 39482), (16, 39542), (17, 39590), (18, 39593),

Gene: Tortoise12_56 Start: 36488, Stop: 36859, Start Num: 9
Candidate Starts for Tortoise12_56:

(Start: 9 @36488 has 183 MA's), (Start: 10 @36518 has 1 MA's), (Start: 12 @36527 has 70 MA's), (13,
36563), (14, 36677), (16, 36737), (17, 36785), (18, 36788),

Gene: Totinger_85 Start: 49425, Stop: 49796, Start Num: 9
Candidate Starts for Totinger_85:

(Start: 9 @49425 has 183 MA's), (Start: 10 @49455 has 1 MA's), (Start: 12 @49464 has 70 MA's), (13,
49500), (14, 49614), (16, 49674), (17, 49722), (18, 49725),

Gene: Tweety_84 Start: 50560, Stop: 50931, Start Num: 9
Candidate Starts for Tweety_84:

(Start: 9 @50560 has 183 MA's), (Start: 10 @50590 has 1 MA's), (Start: 12 @50599 has 70 MA's), (13,
50635), (14, 50749), (16, 50809), (17, 50857), (18, 50860),

Gene: Typha_50 Start: 37590, Stop: 37961, Start Num: 9
Candidate Starts for Typha_50:

(Start: 9 @37590 has 183 MA's), (Start: 10 @37620 has 1 MA's), (Start: 12 @37629 has 70 MA's), (13,
37665), (14, 37779), (16, 37839), (17, 37887), (18, 37890),

Gene: UncleRicky_82 Start: 48323, Stop: 48694, Start Num: 9
Candidate Starts for UncleRicky_82:

(Start: 9 @48323 has 183 MA's), (Start: 10 @48353 has 1 MA's), (Start: 12 @48362 has 70 MA's), (13,
48398), (14, 48512), (16, 48572), (17, 48620), (18, 48623),

Gene: VRedHorse_82 Start: 46932, Stop: 47303, Start Num: 9
Candidate Starts for VRedHorse_82:

(Start: 9 @46932 has 183 MA's), (Start: 10 @46962 has 1 MA's), (Start: 12 @46971 has 70 MA's), (13,
47007), (14, 47121), (16, 47181), (17, 47229), (18, 47232),

Gene: Vagabond_23 Start: 10601, Stop: 10975, Start Num: 9

Candidate Starts for Vagabond_23:

(Start: 9 @10601 has 183 MA's), (Start: 10 @10631 has 1 MA's), (Start: 12 @10640 has 70 MA's), (13, 10676), (14, 10790), (16, 10850), (22, 10961),

Gene: Velveteen_78 Start: 46484, Stop: 46816, Start Num: 12

Candidate Starts for Velveteen_78:

(Start: 4 @46418 has 20 MA's), (Start: 9 @46445 has 183 MA's), (Start: 11 @46478 has 16 MA's), (Start: 12 @46484 has 70 MA's), (13, 46520), (14, 46634),

Gene: Venti_74 Start: 44157, Stop: 44489, Start Num: 12

Candidate Starts for Venti_74:

(Start: 4 @44091 has 20 MA's), (Start: 9 @44118 has 183 MA's), (Start: 11 @44151 has 16 MA's), (Start: 12 @44157 has 70 MA's), (13, 44193), (14, 44307),

Gene: Veteran_75 Start: 48462, Stop: 48767, Start Num: 9

Candidate Starts for Veteran_75:

(Start: 9 @48462 has 183 MA's), (Start: 10 @48492 has 1 MA's), (Start: 12 @48501 has 70 MA's), (13, 48537), (14, 48651), (16, 48711),

Gene: Violac_85 Start: 51078, Stop: 51410, Start Num: 12

Candidate Starts for Violac_85:

(Start: 9 @51039 has 183 MA's), (Start: 10 @51069 has 1 MA's), (Start: 12 @51078 has 70 MA's), (13, 51114), (14, 51228), (16, 51288), (17, 51336), (18, 51339),

Gene: Vivum_83 Start: 51354, Stop: 51686, Start Num: 12

Candidate Starts for Vivum_83:

(Start: 9 @51315 has 183 MA's), (Start: 10 @51345 has 1 MA's), (Start: 12 @51354 has 70 MA's), (13, 51390), (14, 51504), (16, 51564), (17, 51612), (18, 51615),

Gene: Vorrps_23 Start: 10558, Stop: 10932, Start Num: 9

Candidate Starts for Vorrps_23:

(Start: 9 @10558 has 183 MA's), (Start: 10 @10588 has 1 MA's), (Start: 12 @10597 has 70 MA's), (13, 10633), (14, 10747), (16, 10807), (22, 10918),

Gene: Wee_89 Start: 51559, Stop: 51930, Start Num: 9

Candidate Starts for Wee_89:

(Start: 9 @51559 has 183 MA's), (Start: 10 @51589 has 1 MA's), (Start: 12 @51598 has 70 MA's), (13, 51634), (14, 51748), (16, 51808), (17, 51856), (18, 51859),

Gene: Wendigo_58 Start: 39853, Stop: 40224, Start Num: 9

Candidate Starts for Wendigo_58:

(Start: 9 @39853 has 183 MA's), (Start: 10 @39883 has 1 MA's), (Start: 12 @39892 has 70 MA's), (13, 39928), (14, 40042), (16, 40102), (17, 40150), (18, 40153),

Gene: Whouxphf_78 Start: 48751, Stop: 49122, Start Num: 9

Candidate Starts for Whouxphf_78:

(Start: 9 @48751 has 183 MA's), (Start: 10 @48781 has 1 MA's), (Start: 12 @48790 has 70 MA's), (13, 48826), (14, 48940), (16, 49000), (17, 49048), (18, 49051),

Gene: Wildflower_23 Start: 10581, Stop: 10955, Start Num: 9

Candidate Starts for Wildflower_23:

(Start: 9 @10581 has 183 MA's), (Start: 10 @10611 has 1 MA's), (Start: 12 @10620 has 70 MA's), (13, 10656), (14, 10770), (16, 10830), (22, 10941),

Gene: Winget_23 Start: 10600, Stop: 10974, Start Num: 9

Candidate Starts for Winget_23:

(Start: 9 @10600 has 183 MA's), (Start: 10 @10630 has 1 MA's), (Start: 12 @10639 has 70 MA's), (13, 10675), (14, 10789), (16, 10849), (22, 10960),

Gene: XFactor_78 Start: 48679, Stop: 49011, Start Num: 12

Candidate Starts for XFactor_78:

(Start: 9 @48640 has 183 MA's), (Start: 10 @48670 has 1 MA's), (Start: 12 @48679 has 70 MA's), (13, 48715), (14, 48829), (16, 48889), (17, 48937), (18, 48940),

Gene: Xerxes_59 Start: 37894, Stop: 38232, Start Num: 11

Candidate Starts for Xerxes_59:

(Start: 4 @37834 has 20 MA's), (Start: 9 @37861 has 183 MA's), (Start: 11 @37894 has 16 MA's), (Start: 12 @37900 has 70 MA's), (13, 37936), (14, 38050),

Gene: Xula_65 Start: 43290, Stop: 43688, Start Num: 4

Candidate Starts for Xula_65:

(Start: 4 @43290 has 20 MA's), (Start: 9 @43317 has 183 MA's), (Start: 11 @43350 has 16 MA's), (Start: 12 @43356 has 70 MA's), (13, 43392), (14, 43506),

Gene: Yorick_76 Start: 49589, Stop: 49921, Start Num: 12

Candidate Starts for Yorick_76:

(Start: 10 @49580 has 1 MA's), (Start: 12 @49589 has 70 MA's), (13, 49625), (14, 49739), (16, 49799), (17, 49847), (18, 49850),

Gene: Yoshi_101 Start: 51721, Stop: 52092, Start Num: 9

Candidate Starts for Yoshi_101:

(Start: 9 @51721 has 183 MA's), (Start: 10 @51751 has 1 MA's), (Start: 12 @51760 has 70 MA's), (13, 51796), (14, 51910), (16, 51970), (17, 52018), (18, 52021),

Gene: YungJamal_25 Start: 10948, Stop: 11214, Start Num: 12

Candidate Starts for YungJamal_25:

(Start: 9 @10909 has 183 MA's), (Start: 10 @10939 has 1 MA's), (Start: 12 @10948 has 70 MA's), (13, 10984), (14, 11098), (16, 11158),

Gene: Zakhe101_48 Start: 24855, Stop: 24523, Start Num: 12

Candidate Starts for Zakhe101_48:

(Start: 9 @24894 has 183 MA's), (Start: 10 @24864 has 1 MA's), (Start: 12 @24855 has 70 MA's), (13, 24819), (14, 24705),

Gene: Zebo_22 Start: 10327, Stop: 10701, Start Num: 9

Candidate Starts for Zebo_22:

(Start: 9 @10327 has 183 MA's), (Start: 10 @10357 has 1 MA's), (Start: 12 @10366 has 70 MA's), (13, 10402), (14, 10516), (16, 10576), (22, 10687),

Gene: ZenTime222_54 Start: 38652, Stop: 39023, Start Num: 9

Candidate Starts for ZenTime222_54:

(Start: 9 @38652 has 183 MA's), (Start: 10 @38682 has 1 MA's), (Start: 12 @38691 has 70 MA's), (13, 38727), (14, 38841), (16, 38901), (17, 38949), (18, 38952),

Gene: Zerg_78 Start: 48274, Stop: 48645, Start Num: 9

Candidate Starts for Zerg_78:

(Start: 9 @48274 has 183 MA's), (Start: 10 @48304 has 1 MA's), (Start: 12 @48313 has 70 MA's), (13, 48349), (14, 48463), (16, 48523), (17, 48571), (18, 48574),

Gene: Zizzle_81 Start: 50087, Stop: 50458, Start Num: 9

Candidate Starts for Zizzle_81:

(Start: 4 @50060 has 20 MA's), (Start: 9 @50087 has 183 MA's), (Start: 11 @50120 has 16 MA's), (Start: 12 @50126 has 70 MA's), (13, 50162), (14, 50276),

Gene: ZoMa_57 Start: 39937, Stop: 40308, Start Num: 9

Candidate Starts for ZoMa_57:

(Start: 9 @39937 has 183 MA's), (Start: 10 @39967 has 1 MA's), (Start: 12 @39976 has 70 MA's), (13, 40012), (14, 40126), (16, 40186), (17, 40234), (18, 40237),

Gene: Zombie_57 Start: 39158, Stop: 39529, Start Num: 9

Candidate Starts for Zombie_57:

(Start: 9 @39158 has 183 MA's), (Start: 10 @39188 has 1 MA's), (Start: 12 @39197 has 70 MA's), (13, 39233), (14, 39347), (16, 39407), (17, 39455), (18, 39458),