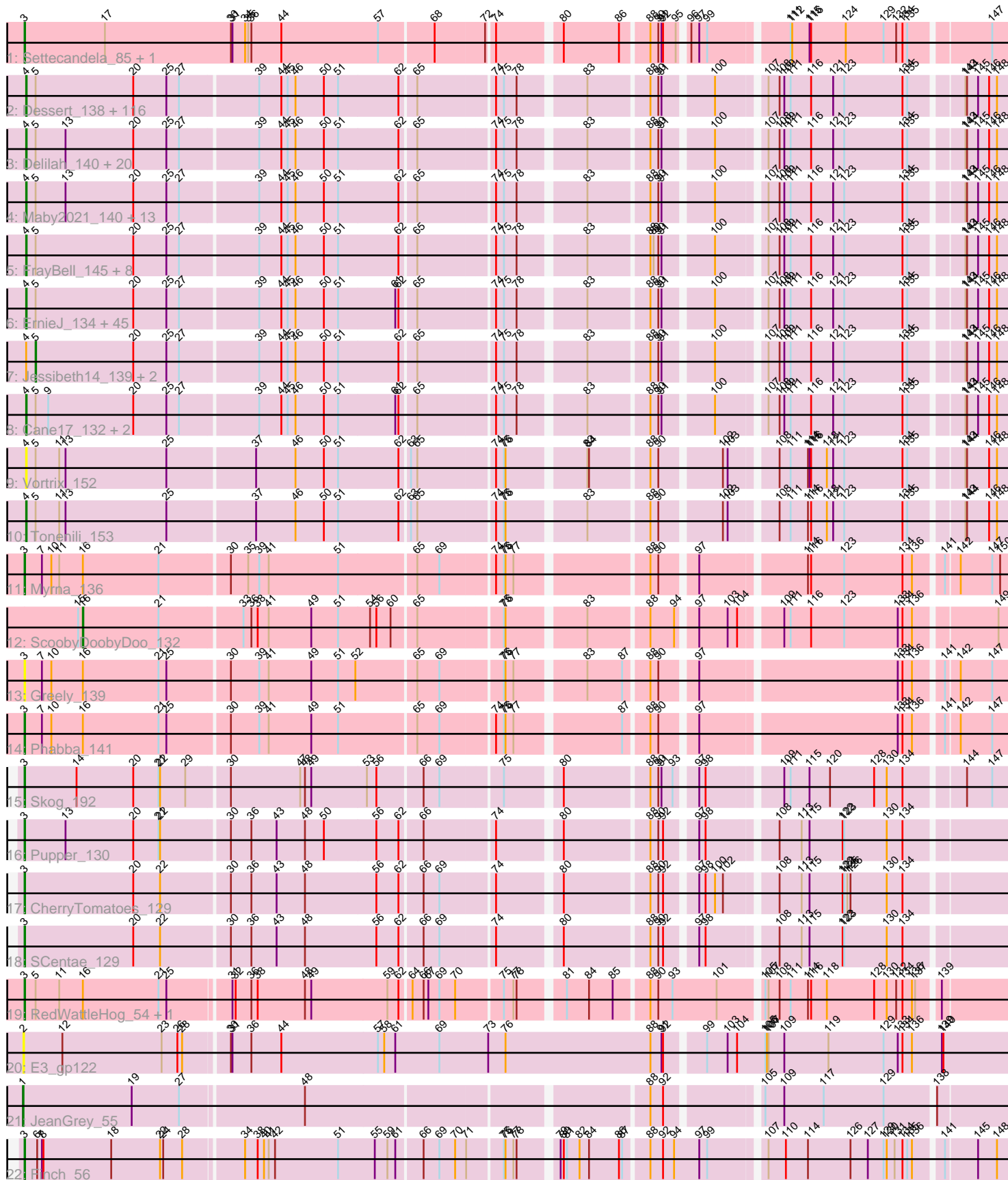


Pham 306125



Note: Tracks are now grouped by subcluster and scaled. Switching in subcluster is indicated by changes in track color. Track scale is now set by default to display the region 30 bp upstream of start 1 to 30 bp downstream of the last possible start. If this default region is judged to be packed too tightly with annotated starts, the track will be further scaled to only show that region of the ORF with annotated starts. This action will be indicated by adding "Zoomed" to the title. For starts, yellow indicates the location of called starts comprised solely of Glimmer/GeneMark auto-annotations, green indicates the location of called starts with at least 1 manual gene annotation.

Pham 306125 Report

This analysis was run 06/27/26 on database version 652.

Pham number 306125 has 230 members, 36 are drafts.

Phages represented in each track:

- Track 1 : Settecandela_85, Phrappuccino_85
- Track 2 : Dessert_138, StephanieG_138, ArcherS7_139, Ava3_141, EasyJones_143, Halldule_134, StubbySaigey_144, Pier_144, Concombre_146, Alice_133, Cactojaque_136, Momo_140, Domi_133, EmToTheThree_142, LookingGlass_140, Phox_137, Dietrick_132, NoodleTree_147, Tyke_140, Gamgam_141, BigCity_148, Sprinklers_136, Wally_139, Demodog_147, Bangla1971_141, Atlantean_140, DirtMonster_134, Jezreel_140, Daffodil_145, Pivoine_140, BackyardAgain_137, FoxtrotP1_140, Ewok_141, JigglyPuff_148, Fixie_138, PurduePete_140, DrPhinkDaddy_139, ParkTD_141, Catera_136, Duckfeet_134, Tortoise16_137, Bonray_141, McWolfish_138, GlutenPhree_142, Nidhogg_142, Kamryn_140, Rahel_139, Drazdys_138, Matsumoto_138, ShiaLabeouf_139, Chomp_140, Rizal_135, Willis_141, IkeLoa_134, Bigswole_143, RoMag_135, Quasimodo_142, Amataga_141, BobaPhatt_135, Dandelion_145, Issimir_138, Blackbrain_136, Ghost_139, Rocha_138, Shelob_142, Naval22_148, Bipolarisk_139, Astraea_136, Basquiat_137, Latch_141, Yassified_137, Littleton_140, Patter_141, MikeLiesIn_141, SoilZilla_136, Babyland_142, Gabriel_140, TinyTim_140, Teardrop_139, Fludd_141, LolaVinca_140, SmallFry_140, Khaleesi_139, Ngannou_137, ChickenPhender_136, Lethe_138, Janiyra_143, Ading_140, BadAgartude_136, JPickles_137, Ronan_134, Kboogie_144, Phlegm_144, Belieber_136, Chargie21_137, InigoMontoya_143, Phusco_140, ValleyTerrace_141, ZygoTaiga_138, MoMoMixon_140, Erdmann_140, BananaFence_139, EggyFarm_148, Turret_136, Salacia_144, Izajani_140, Audrick_143, Naija_140, Grasshills_147, McGee_142, Specks_145, ET08_128, SilverDipper_142, Delylah_143, SVoro_138, Mikro_137, Capablanca_143
- Track 3 : Delilah_140, Grungle_127, Pleione_143, Bxz1_137, Lukilu_130, LRRHood_133, Sebata_140, Rabinovish_139, Stubby_133, Bezza_129, Pio_144, Gizmo_145, Loanshark_139, Burrough_140, Breeniome_139, HyRo_131, LinStu_138, Koguma_137, Shifa_129, Shaqnato_133, Pinkcreek_131
- Track 4 : Maby2021_140, SrishMeg2525_139, Fongie_138, Lee7_138, OrediggerDelux_138, Megamind_139, Bread_139, YemiJoy2021_141, Zalkecks_141, Zeenon_141, FudgeTart_138, NedWong_141, Yucca_139, Asterius_143
- Track 5 : FrayBell_145, Cleatunium_133, Bowman_137, Pupusa_146, PharkleMinkus_144, Tainan_143, Labradorite_139, LordLeafolot_144, Darko_140
- Track 6 : ErnieJ_134, EmmaElysia_141, ScottMcG_136, QBert_134, Mangeria_140, Essence_137, BeanWater_132, Iota_135, Jemmno_140, Cali_135, Ablatia_140, Jaygup_140, Montpel_139, Shnickers_140, Maturis_138, Spud_139, YoungMoneyMata_142, DTDevon_140, JulietS_134, Jedediah_143, Lunareta_139,

Nappy_142, ChaylaJr_136, CindyLou_142, Adlitam_141, Flabslab_135, Guwapp_139, JustHall_138, Primadonna_134, InterFolia_146, NuevoMundo_145, Substance289_138, Roots515_139, Trinitium_138, Spec_136, LifeSavor_138, Napoleon13_136, Shrimp_140, Norm_141, Blackdragon_136, Melpomini_134, CharlieB_137, JayJay_145, Derek_139, Sauce_140, I3_145

- Track 7 : Jessibeth14_139, Caravan_134, Morizzled23_141
- Track 8 : Cane17_132, Blubba_132, Colt_132
- Track 9 : Vortrix_152
- Track 10 : Tonenili_153
- Track 11 : Myrna_136
- Track 12 : ScoobyDoobyDoo_132
- Track 13 : Greely_139
- Track 14 : Phabba_141
- Track 15 : Skog_192
- Track 16 : Pupper_130
- Track 17 : CherryTomatoes_129
- Track 18 : SCentae_129
- Track 19 : RedWattleHog_54, Stormageddon_51
- Track 20 : E3_gp122
- Track 21 : JeanGrey_55
- Track 22 : Finch_56

Summary of Final Annotations (See graph section above for start numbers):

The start number called the most often in the published annotations is 4, it was called in 178 of the 194 non-draft genes in the pham.

Genes that call this "Most Annotated" start:

- Ablatia_140, Ading_140, Adlitam_141, Alice_133, Amataga_141, ArcherS7_139, Asterius_143, Astraea_136, Atlantean_140, Audrick_143, Ava3_141, Babyland_142, BackyardAgain_137, BadAgartude_136, BananaFence_139, Bangla1971_141, Basquiat_137, BeanWater_132, Belieber_136, Bezza_129, BigCity_148, Bigswole_143, Bipolarisk_139, Blackbrain_136, Blackdragon_136, Blubba_132, BobaPhatt_135, Bonray_141, Bowman_137, Bread_139, Breeniome_139, Burrough_140, Bxz1_137, Cactojaque_136, Cali_135, Cane17_132, Capablanca_143, Catera_136, Chargie21_137, CharlieB_137, ChaylaJr_136, ChickenPhender_136, Chomp_140, CindyLou_142, Cleatunium_133, Colt_132, Concombre_146, DTDevon_140, Daffodil_145, Dandelion_145, Darko_140, Delilah_140, Delylah_143, Demodog_147, Derek_139, Dessert_138, Dietrick_132, DirtMonster_134, Domi_133, DrPhinkDaddy_139, Drazdys_138, Duckfeet_134, ET08_128, EasyJones_143, EggyFarm_148, EmToTheThree_142, EmmaElysia_141, Erdmann_140, ErnieJ_134, Essence_137, Ewok_141, Fixie_138, Flabslab_135, Fludd_141, Fongie_138, FoxtrotP1_140, FrayBell_145, FudgeTart_138, Gabriel_140, Gamgam_141, Ghost_139, Gizmo_145, GlutenPhree_142, Grasshills_147, Grungle_127, Guwapp_139, Halldule_134, HyRo_131, I3_145, IkeLoa_134, InigoMontoya_143, InterFolia_146, Iota_135, Issimir_138, Izajani_140, JPickles_137, Janiyra_143, JayJay_145, Jaygup_140, Jedediah_143, Jemmno_140, Jezreel_140, JigglyPuff_148, JulietS_134, JustHall_138, Kamryn_140, Kboogie_144, Khaleesi_139, Koguma_137, LRRHood_133, Labradorite_139, Latch_141, Lee7_138, Lethe_138, LifeSavor_138,

LinStu_138, Littleton_140, Loanshark_139, LolaVinca_140, LookingGlass_140, LordLeafolot_144, Lukilu_130, Lunareta_139, Maby2021_140, Mangeria_140, Matsumoto_138, Maturis_138, McGee_142, McWolfish_138, Megamind_139, Melpomini_134, MikeLiesIn_141, Mikro_137, MoMoMixon_140, Momo_140, Montpel_139, Naija_140, Napoleon13_136, Nappy_142, Naval22_148, NedWong_141, Ngannou_137, Nidhogg_142, NoodleTree_147, Norm_141, NuevoMundo_145, OrediggerDelux_138, ParkTD_141, Patter_141, PharkleMinkus_144, Phlegm_144, Phox_137, Phusco_140, Pier_144, Pinkcreek_131, Pio_144, Pivoine_140, Pleione_143, Primadonna_134, Pupusa_146, PurduePete_140, QBert_134, Quasimodo_142, Rabinovich_139, Rahel_139, Rizal_135, RoMag_135, Rocha_138, Ronan_134, Roots515_139, SVoro_138, Salacia_144, Sauce_140, ScottMcG_136, Sebata_140, Shaqnato_133, Shelob_142, ShiaLabeouf_139, Shifa_129, Shnickers_140, Shrimp_140, SilverDipper_142, SmallFry_140, SoilZilla_136, Spec_136, Specks_145, Sprinklers_136, Spud_139, SrishMeg2525_139, StephanieG_138, StubbySaigey_144, Stubby_133, Substance289_138, Tainan_143, Teardrop_139, TinyTim_140, Tonenili_153, Tortoise16_137, Trinitium_138, Turret_136, Tyke_140, ValleyTerrace_141, Vortrix_152, Wally_139, Willis_141, Yassified_137, YemiJoy2021_141, YoungMoneyMata_142, Yucca_139, Zalkecks_141, Zeenon_141, ZygoTaiga_138,

Genes that have the "Most Annotated" start but do not call it:

- Caravan_134, Jessibeth14_139, Morizzled23_141,

Genes that do not have the "Most Annotated" start:

- CherryTomatoes_129, E3_gp122, Finch_56, Greely_139, JeanGrey_55, Myrna_136, Phabba_141, Phrappuccino_85, Pupper_130, RedWattleHog_54, SCentae_129, ScoobyDoobyDoo_132, Settecandela_85, Skog_192, Stormageddon_51,

Summary by start number:

Start 1:

- Found in 1 of 230 (0.4%) of genes in pham
- Manual Annotations of this start: 1 of 194
- Called 100.0% of time when present
- Phage (with cluster) where this start called: JeanGrey_55 (singleton),

Start 2:

- Found in 1 of 230 (0.4%) of genes in pham
- No Manual Annotations of this start.
- Called 100.0% of time when present
- Phage (with cluster) where this start called: E3_gp122 (singleton),

Start 3:

- Found in 12 of 230 (5.2%) of genes in pham
- Manual Annotations of this start: 11 of 194
- Called 100.0% of time when present
- Phage (with cluster) where this start called: CherryTomatoes_129 (DO), Finch_56 (singleton), Greely_139 (C2), Myrna_136 (C2), Phabba_141 (C2), Phrappuccino_85 (AA), Pupper_130 (DO), RedWattleHog_54 (DX), SCentae_129 (DO), Settecandela_85 (AA), Skog_192 (DO), Stormageddon_51 (DX),

Start 4:

- Found in 215 of 230 (93.5%) of genes in pham
- Manual Annotations of this start: 178 of 194
- Called 98.6% of time when present
- Phage (with cluster) where this start called: Ablatia_140 (C1), Ading_140 (C1), Adlitam_141 (C1), Alice_133 (C1), Amataga_141 (C1), ArcherS7_139 (C1), Asterius_143 (C1), Astraea_136 (C1), Atlantean_140 (C1), Audrick_143 (C1), Ava3_141 (C1), Babyland_142 (C1), BackyardAgain_137 (C1), BadAgartude_136 (C1), BananaFence_139 (C1), Bangla1971_141 (C1), Basquiat_137 (C1), BeanWater_132 (C1), Belieber_136 (C1), Bezza_129 (C1), BigCity_148 (C1), Bigswole_143 (C1), Bipolarisk_139 (C1), Blackbrain_136 (C1), Blackdragon_136 (C1), Blubba_132 (C1), BobaPhatt_135 (C1), Bonray_141 (C1), Bowman_137 (C1), Bread_139 (C1), Breeniome_139 (C1), Burrough_140 (C1), Bxz1_137 (C1), Cactojaque_136 (C1), Cali_135 (C1), Cane17_132 (C1), Capablanca_143 (C1), Catera_136 (C1), Chargie21_137 (C1), CharlieB_137 (C1), ChaylaJr_136 (C1), ChickenPhender_136 (C1), Chomp_140 (C1), CindyLou_142 (C1), Cleatunium_133 (C1), Colt_132 (C1), Concombre_146 (C1), DTDevon_140 (C1), Daffodil_145 (C1), Dandelion_145 (C1), Darko_140 (C1), Delilah_140 (C1), Delylah_143 (C1), Demodog_147 (C1), Derek_139 (C1), Dessert_138 (C1), Dietrick_132 (C1), DirtMonster_134 (C1), Domi_133 (C1), DrPhinkDaddy_139 (C1), Drazdys_138 (C1), Duckfeet_134 (C1), ET08_128 (C1), EasyJones_143 (C1), EggyFarm_148 (C1), EmToTheThree_142 (C1), EmmaElysia_141 (C1), Erdmann_140 (C1), ErnieJ_134 (C1), Essence_137 (C1), Ewok_141 (C1), Fixie_138 (C1), Flabslab_135 (C1), Fludd_141 (C1), Fongie_138 (C1), FoxtrotP1_140 (C1), FrayBell_145 (C1), FudgeTart_138 (C1), Gabriel_140 (C1), Gamgam_141 (C1), Ghost_139 (C1), Gizmo_145 (C1), GlutenPhree_142 (C1), Grasshills_147 (C1), Grungle_127 (C1), Guwapp_139 (C1), Halldule_134 (C1), HyRo_131 (C1), I3_145 (C1), IkeLoa_134 (C1), InigoMontoya_143 (C1), InterFolia_146 (C1), Iota_135 (C1), Issimir_138 (C1), Izajani_140 (C1), JPickles_137 (C1), Janiyr_143 (C1), JayJay_145 (C1), Jaygup_140 (C1), Jedediah_143 (C1), Jemmno_140 (C1), Jezreel_140 (C1), JigglyPuff_148 (C1), JulietS_134 (C1), JustHall_138 (C1), Kamryn_140 (C1), Kboogie_144 (C1), Khaleesi_139 (C1), Koguma_137 (C1), LRRHood_133 (C1), Labradorite_139 (C1), Latch_141 (C1), Lee7_138 (C1), Lethe_138 (C1), LifeSavor_138 (C1), LinStu_138 (C1), Littleton_140 (C1), Loanshark_139 (C1), LolaVinca_140 (C1), LookingGlass_140 (C1), LordLeafot_144 (C1), Lukilu_130 (C1), Lunareta_139 (C1), Maby2021_140 (C1), Mangeria_140 (C1), Matsumoto_138 (C1), Maturis_138 (C1), McGee_142 (C1), McWolfish_138 (C1), Megamind_139 (C1), Melpomini_134 (C1), MikeLiesIn_141 (C1), Mikro_137 (C1), MoMoMixon_140 (C1), Momo_140 (C1), Montpel_139 (C1), Naija_140 (C1), Napoleon13_136 (C1), Nappy_142 (C1), Naval22_148 (C1), NedWong_141 (C1), Ngannou_137 (C1), Nidhogg_142 (C1), NoodleTree_147 (C1), Norm_141 (C1), NuevoMundo_145 (C1), OrediggerDelux_138 (C1), ParkTD_141 (C1), Patter_141 (C1), PharkleMinkus_144 (C1), Phlegm_144 (C1), Phox_137 (C1), Phusco_140 (C1), Pier_144 (C1), Pinkcreek_131 (C1), Pio_144 (C1), Pivoine_140 (C1), Pleione_143 (C1), Primadonna_134 (C1), Pupusa_146 (C1), PurduePete_140 (C1), QBert_134 (C1), Quasimodo_142 (C1), Rabinovish_139 (C1), Rahel_139 (C1), Rizal_135 (C1), RoMag_135 (C1), Rocha_138 (C1), Ronan_134 (C1), Roots515_139 (C1), SVoro_138 (C1), Salacia_144 (C1), Sauce_140 (C1), ScottMcG_136 (C1), Sebata_140 (C1), Shaqnato_133 (C1), Shelob_142 (C1), ShiaLabeouf_139 (C1), Shifa_129 (C1), Shnickers_140 (C1), Shrimp_140 (C1), SilverDipper_142 (C1), SmallFry_140 (C1), SoilZilla_136 (C1), Spec_136 (C1), Specks_145 (C1), Sprinklers_136 (C1), Spud_139 (C1), SrishMeg2525_139 (C1), StephanieG_138 (C1), StubbySaigey_144 (C1), Stubby_133 (C1), Substance289_138 (C1), Tainan_143 (C1), Teardrop_139 (C1), TinyTim_140 (C1), Tonenili_153 (C1),

Tortoise16_137 (C1), Trinitium_138 (C1), Turret_136 (C1), Tyke_140 (C1), ValleyTerrace_141 (C1), Vortrix_152 (C1), Wally_139 (C1), Willis_141 (C1), Yassified_137 (C1), YemiJoy2021_141 (C1), YoungMoneyMata_142 (C1), Yucca_139 (C1), Zalkecks_141 (C1), Zeenon_141 (C1), ZygoTaiga_138 (C1),

Start 5:

- Found in 217 of 230 (94.3%) of genes in pham
- Manual Annotations of this start: 3 of 194
- Called 1.4% of time when present
- Phage (with cluster) where this start called: Caravan_134 (C1), Jessibeth14_139 (C1), Morizzled23_141 (C1),

Start 16:

- Found in 6 of 230 (2.6%) of genes in pham
- Manual Annotations of this start: 1 of 194
- Called 16.7% of time when present
- Phage (with cluster) where this start called: ScoobyDoobyDoo_132 (C2),

Summary by clusters:

There are 6 clusters represented in this pham: AA, DO, singleton, DX, C2, C1,

Info for manual annotations of cluster AA:

- Start number 3 was manually annotated 2 times for cluster AA.

Info for manual annotations of cluster C1:

- Start number 4 was manually annotated 178 times for cluster C1.
- Start number 5 was manually annotated 3 times for cluster C1.

Info for manual annotations of cluster C2:

- Start number 3 was manually annotated 2 times for cluster C2.
- Start number 16 was manually annotated 1 time for cluster C2.

Info for manual annotations of cluster DO:

- Start number 3 was manually annotated 4 times for cluster DO.

Info for manual annotations of cluster DX:

- Start number 3 was manually annotated 2 times for cluster DX.

Gene Information:

Gene: Ablatia_140 Start: 80845, Stop: 82584, Start Num: 4

Candidate Starts for Ablatia_140:

(Start: 4 @80845 has 178 MA's), (Start: 5 @80863 has 3 MA's), (20, 81049), (25, 81112), (27, 81136), (39, 81277), (44, 81319), (45, 81331), (46, 81346), (50, 81400), (51, 81427), (61, 81535), (62, 81541), (65, 81568), (74, 81703), (75, 81718), (78, 81742), (83, 81856), (88, 81961), (90, 81976), (91, 81982), (100, 82066), (107, 82144), (108, 82165), (109, 82174), (111, 82186), (116, 82225), (121, 82267), (123, 82288), (134, 82399), (135, 82408), (143, 82498), (144, 82501), (145, 82522), (146, 82543), (148, 82558),

Gene: Ading_140 Start: 80814, Stop: 82553, Start Num: 4

Candidate Starts for Ading_140:

(Start: 4 @80814 has 178 MA's), (Start: 5 @80832 has 3 MA's), (20, 81018), (25, 81081), (27, 81105), (39, 81246), (44, 81288), (45, 81300), (46, 81315), (50, 81369), (51, 81396), (62, 81510), (65, 81537), (74, 81672), (75, 81687), (78, 81711), (83, 81825), (88, 81930), (90, 81945), (91, 81951), (100, 82035), (107, 82113), (108, 82134), (109, 82143), (111, 82155), (116, 82194), (121, 82236), (123, 82257), (134, 82368), (135, 82377), (143, 82467), (144, 82470), (145, 82491), (146, 82512), (148, 82527),

Gene: Adlitam_141 Start: 81310, Stop: 83049, Start Num: 4

Candidate Starts for Adlitam_141:

(Start: 4 @81310 has 178 MA's), (Start: 5 @81328 has 3 MA's), (20, 81514), (25, 81577), (27, 81601), (39, 81742), (44, 81784), (45, 81796), (46, 81811), (50, 81865), (51, 81892), (61, 82000), (62, 82006), (65, 82033), (74, 82168), (75, 82183), (78, 82207), (83, 82321), (88, 82426), (90, 82441), (91, 82447), (100, 82531), (107, 82609), (108, 82630), (109, 82639), (111, 82651), (116, 82690), (121, 82732), (123, 82753), (134, 82864), (135, 82873), (143, 82963), (144, 82966), (145, 82987), (146, 83008), (148, 83023),

Gene: Alice_133 Start: 80535, Stop: 82274, Start Num: 4

Candidate Starts for Alice_133:

(Start: 4 @80535 has 178 MA's), (Start: 5 @80553 has 3 MA's), (20, 80739), (25, 80802), (27, 80826), (39, 80967), (44, 81009), (45, 81021), (46, 81036), (50, 81090), (51, 81117), (62, 81231), (65, 81258), (74, 81393), (75, 81408), (78, 81432), (83, 81546), (88, 81651), (90, 81666), (91, 81672), (100, 81756), (107, 81834), (108, 81855), (109, 81864), (111, 81876), (116, 81915), (121, 81957), (123, 81978), (134, 82089), (135, 82098), (143, 82188), (144, 82191), (145, 82212), (146, 82233), (148, 82248),

Gene: Amataga_141 Start: 80555, Stop: 82294, Start Num: 4

Candidate Starts for Amataga_141:

(Start: 4 @80555 has 178 MA's), (Start: 5 @80573 has 3 MA's), (20, 80759), (25, 80822), (27, 80846), (39, 80987), (44, 81029), (45, 81041), (46, 81056), (50, 81110), (51, 81137), (62, 81251), (65, 81278), (74, 81413), (75, 81428), (78, 81452), (83, 81566), (88, 81671), (90, 81686), (91, 81692), (100, 81776), (107, 81854), (108, 81875), (109, 81884), (111, 81896), (116, 81935), (121, 81977), (123, 81998), (134, 82109), (135, 82118), (143, 82208), (144, 82211), (145, 82232), (146, 82253), (148, 82268),

Gene: ArcherS7_139 Start: 80394, Stop: 82133, Start Num: 4

Candidate Starts for ArcherS7_139:

(Start: 4 @80394 has 178 MA's), (Start: 5 @80412 has 3 MA's), (20, 80598), (25, 80661), (27, 80685), (39, 80826), (44, 80868), (45, 80880), (46, 80895), (50, 80949), (51, 80976), (62, 81090), (65, 81117), (74, 81252), (75, 81267), (78, 81291), (83, 81405), (88, 81510), (90, 81525), (91, 81531), (100, 81615), (107, 81693), (108, 81714), (109, 81723), (111, 81735), (116, 81774), (121, 81816), (123, 81837), (134, 81948), (135, 81957), (143, 82047), (144, 82050), (145, 82071), (146, 82092), (148, 82107),

Gene: Asterius_143 Start: 81071, Stop: 82810, Start Num: 4

Candidate Starts for Asterius_143:

(Start: 4 @81071 has 178 MA's), (Start: 5 @81089 has 3 MA's), (13, 81146), (20, 81275), (25, 81338), (27, 81362), (39, 81503), (44, 81545), (45, 81557), (46, 81572), (50, 81626), (51, 81653), (62, 81767), (65, 81794), (74, 81929), (75, 81944), (78, 81968), (83, 82082), (88, 82187), (90, 82202), (91, 82208), (100, 82292), (107, 82370), (108, 82391), (109, 82400), (111, 82412), (116, 82451), (121, 82493), (123, 82514), (134, 82625), (135, 82634), (143, 82724), (144, 82727), (145, 82748), (146, 82769), (148, 82784),

Gene: Astraea_136 Start: 79835, Stop: 81574, Start Num: 4

Candidate Starts for Astraea_136:

(Start: 4 @79835 has 178 MA's), (Start: 5 @79853 has 3 MA's), (20, 80039), (25, 80102), (27, 80126), (39, 80267), (44, 80309), (45, 80321), (46, 80336), (50, 80390), (51, 80417), (62, 80531), (65, 80558),

(74, 80693), (75, 80708), (78, 80732), (83, 80846), (88, 80951), (90, 80966), (91, 80972), (100, 81056), (107, 81134), (108, 81155), (109, 81164), (111, 81176), (116, 81215), (121, 81257), (123, 81278), (134, 81389), (135, 81398), (143, 81488), (144, 81491), (145, 81512), (146, 81533), (148, 81548),

Gene: Atlantean_140 Start: 80555, Stop: 82294, Start Num: 4

Candidate Starts for Atlantean_140:

(Start: 4 @80555 has 178 MA's), (Start: 5 @80573 has 3 MA's), (20, 80759), (25, 80822), (27, 80846), (39, 80987), (44, 81029), (45, 81041), (46, 81056), (50, 81110), (51, 81137), (62, 81251), (65, 81278), (74, 81413), (75, 81428), (78, 81452), (83, 81566), (88, 81671), (90, 81686), (91, 81692), (100, 81776), (107, 81854), (108, 81875), (109, 81884), (111, 81896), (116, 81935), (121, 81977), (123, 81998), (134, 82109), (135, 82118), (143, 82208), (144, 82211), (145, 82232), (146, 82253), (148, 82268),

Gene: Audrick_143 Start: 80534, Stop: 82273, Start Num: 4

Candidate Starts for Audrick_143:

(Start: 4 @80534 has 178 MA's), (Start: 5 @80552 has 3 MA's), (20, 80738), (25, 80801), (27, 80825), (39, 80966), (44, 81008), (45, 81020), (46, 81035), (50, 81089), (51, 81116), (62, 81230), (65, 81257), (74, 81392), (75, 81407), (78, 81431), (83, 81545), (88, 81650), (90, 81665), (91, 81671), (100, 81755), (107, 81833), (108, 81854), (109, 81863), (111, 81875), (116, 81914), (121, 81956), (123, 81977), (134, 82088), (135, 82097), (143, 82187), (144, 82190), (145, 82211), (146, 82232), (148, 82247),

Gene: Ava3_141 Start: 80979, Stop: 82718, Start Num: 4

Candidate Starts for Ava3_141:

(Start: 4 @80979 has 178 MA's), (Start: 5 @80997 has 3 MA's), (20, 81183), (25, 81246), (27, 81270), (39, 81411), (44, 81453), (45, 81465), (46, 81480), (50, 81534), (51, 81561), (62, 81675), (65, 81702), (74, 81837), (75, 81852), (78, 81876), (83, 81990), (88, 82095), (90, 82110), (91, 82116), (100, 82200), (107, 82278), (108, 82299), (109, 82308), (111, 82320), (116, 82359), (121, 82401), (123, 82422), (134, 82533), (135, 82542), (143, 82632), (144, 82635), (145, 82656), (146, 82677), (148, 82692),

Gene: Babyland_142 Start: 80633, Stop: 82372, Start Num: 4

Candidate Starts for Babyland_142:

(Start: 4 @80633 has 178 MA's), (Start: 5 @80651 has 3 MA's), (20, 80837), (25, 80900), (27, 80924), (39, 81065), (44, 81107), (45, 81119), (46, 81134), (50, 81188), (51, 81215), (62, 81329), (65, 81356), (74, 81491), (75, 81506), (78, 81530), (83, 81644), (88, 81749), (90, 81764), (91, 81770), (100, 81854), (107, 81932), (108, 81953), (109, 81962), (111, 81974), (116, 82013), (121, 82055), (123, 82076), (134, 82187), (135, 82196), (143, 82286), (144, 82289), (145, 82310), (146, 82331), (148, 82346),

Gene: BackyardAgain_137 Start: 79982, Stop: 81721, Start Num: 4

Candidate Starts for BackyardAgain_137:

(Start: 4 @79982 has 178 MA's), (Start: 5 @80000 has 3 MA's), (20, 80186), (25, 80249), (27, 80273), (39, 80414), (44, 80456), (45, 80468), (46, 80483), (50, 80537), (51, 80564), (62, 80678), (65, 80705), (74, 80840), (75, 80855), (78, 80879), (83, 80993), (88, 81098), (90, 81113), (91, 81119), (100, 81203), (107, 81281), (108, 81302), (109, 81311), (111, 81323), (116, 81362), (121, 81404), (123, 81425), (134, 81536), (135, 81545), (143, 81635), (144, 81638), (145, 81659), (146, 81680), (148, 81695),

Gene: BadAgartude_136 Start: 81281, Stop: 83020, Start Num: 4

Candidate Starts for BadAgartude_136:

(Start: 4 @81281 has 178 MA's), (Start: 5 @81299 has 3 MA's), (20, 81485), (25, 81548), (27, 81572), (39, 81713), (44, 81755), (45, 81767), (46, 81782), (50, 81836), (51, 81863), (62, 81977), (65, 82004), (74, 82139), (75, 82154), (78, 82178), (83, 82292), (88, 82397), (90, 82412), (91, 82418), (100, 82502), (107, 82580), (108, 82601), (109, 82610), (111, 82622), (116, 82661), (121, 82703), (123, 82724), (134, 82835), (135, 82844), (143, 82934), (144, 82937), (145, 82958), (146, 82979), (148, 82994),

Gene: BananaFence_139 Start: 81235, Stop: 82974, Start Num: 4

Candidate Starts for BananaFence_139:

(Start: 4 @81235 has 178 MA's), (Start: 5 @81253 has 3 MA's), (20, 81439), (25, 81502), (27, 81526), (39, 81667), (44, 81709), (45, 81721), (46, 81736), (50, 81790), (51, 81817), (62, 81931), (65, 81958), (74, 82093), (75, 82108), (78, 82132), (83, 82246), (88, 82351), (90, 82366), (91, 82372), (100, 82456), (107, 82534), (108, 82555), (109, 82564), (111, 82576), (116, 82615), (121, 82657), (123, 82678), (134, 82789), (135, 82798), (143, 82888), (144, 82891), (145, 82912), (146, 82933), (148, 82948),

Gene: Bangla1971_141 Start: 80524, Stop: 82263, Start Num: 4

Candidate Starts for Bangla1971_141:

(Start: 4 @80524 has 178 MA's), (Start: 5 @80542 has 3 MA's), (20, 80728), (25, 80791), (27, 80815), (39, 80956), (44, 80998), (45, 81010), (46, 81025), (50, 81079), (51, 81106), (62, 81220), (65, 81247), (74, 81382), (75, 81397), (78, 81421), (83, 81535), (88, 81640), (90, 81655), (91, 81661), (100, 81745), (107, 81823), (108, 81844), (109, 81853), (111, 81865), (116, 81904), (121, 81946), (123, 81967), (134, 82078), (135, 82087), (143, 82177), (144, 82180), (145, 82201), (146, 82222), (148, 82237),

Gene: Basquiat_137 Start: 80133, Stop: 81872, Start Num: 4

Candidate Starts for Basquiat_137:

(Start: 4 @80133 has 178 MA's), (Start: 5 @80151 has 3 MA's), (20, 80337), (25, 80400), (27, 80424), (39, 80565), (44, 80607), (45, 80619), (46, 80634), (50, 80688), (51, 80715), (62, 80829), (65, 80856), (74, 80991), (75, 81006), (78, 81030), (83, 81144), (88, 81249), (90, 81264), (91, 81270), (100, 81354), (107, 81432), (108, 81453), (109, 81462), (111, 81474), (116, 81513), (121, 81555), (123, 81576), (134, 81687), (135, 81696), (143, 81786), (144, 81789), (145, 81810), (146, 81831), (148, 81846),

Gene: BeanWater_132 Start: 80833, Stop: 82572, Start Num: 4

Candidate Starts for BeanWater_132:

(Start: 4 @80833 has 178 MA's), (Start: 5 @80851 has 3 MA's), (20, 81037), (25, 81100), (27, 81124), (39, 81265), (44, 81307), (45, 81319), (46, 81334), (50, 81388), (51, 81415), (61, 81523), (62, 81529), (65, 81556), (74, 81691), (75, 81706), (78, 81730), (83, 81844), (88, 81949), (90, 81964), (91, 81970), (100, 82054), (107, 82132), (108, 82153), (109, 82162), (111, 82174), (116, 82213), (121, 82255), (123, 82276), (134, 82387), (135, 82396), (143, 82486), (144, 82489), (145, 82510), (146, 82531), (148, 82546),

Gene: Belieber_136 Start: 80308, Stop: 82047, Start Num: 4

Candidate Starts for Belieber_136:

(Start: 4 @80308 has 178 MA's), (Start: 5 @80326 has 3 MA's), (20, 80512), (25, 80575), (27, 80599), (39, 80740), (44, 80782), (45, 80794), (46, 80809), (50, 80863), (51, 80890), (62, 81004), (65, 81031), (74, 81166), (75, 81181), (78, 81205), (83, 81319), (88, 81424), (90, 81439), (91, 81445), (100, 81529), (107, 81607), (108, 81628), (109, 81637), (111, 81649), (116, 81688), (121, 81730), (123, 81751), (134, 81862), (135, 81871), (143, 81961), (144, 81964), (145, 81985), (146, 82006), (148, 82021),

Gene: Bezza_129 Start: 80891, Stop: 82630, Start Num: 4

Candidate Starts for Bezza_129:

(Start: 4 @80891 has 178 MA's), (Start: 5 @80909 has 3 MA's), (13, 80966), (20, 81095), (25, 81158), (27, 81182), (39, 81323), (44, 81365), (45, 81377), (46, 81392), (50, 81446), (51, 81473), (62, 81587), (65, 81614), (74, 81749), (75, 81764), (78, 81788), (83, 81902), (88, 82007), (90, 82022), (91, 82028), (100, 82112), (107, 82190), (108, 82211), (109, 82220), (111, 82232), (116, 82271), (121, 82313), (123, 82334), (134, 82445), (135, 82454), (143, 82544), (144, 82547), (145, 82568), (146, 82589), (148, 82604),

Gene: BigCity_148 Start: 83505, Stop: 85244, Start Num: 4

Candidate Starts for BigCity_148:

(Start: 4 @83505 has 178 MA's), (Start: 5 @83523 has 3 MA's), (20, 83709), (25, 83772), (27, 83796), (39, 83937), (44, 83979), (45, 83991), (46, 84006), (50, 84060), (51, 84087), (62, 84201), (65, 84228),

(74, 84363), (75, 84378), (78, 84402), (83, 84516), (88, 84621), (90, 84636), (91, 84642), (100, 84726), (107, 84804), (108, 84825), (109, 84834), (111, 84846), (116, 84885), (121, 84927), (123, 84948), (134, 85059), (135, 85068), (143, 85158), (144, 85161), (145, 85182), (146, 85203), (148, 85218),

Gene: Bigswole_143 Start: 82790, Stop: 84529, Start Num: 4

Candidate Starts for Bigswole_143:

(Start: 4 @82790 has 178 MA's), (Start: 5 @82808 has 3 MA's), (20, 82994), (25, 83057), (27, 83081), (39, 83222), (44, 83264), (45, 83276), (46, 83291), (50, 83345), (51, 83372), (62, 83486), (65, 83513), (74, 83648), (75, 83663), (78, 83687), (83, 83801), (88, 83906), (90, 83921), (91, 83927), (100, 84011), (107, 84089), (108, 84110), (109, 84119), (111, 84131), (116, 84170), (121, 84212), (123, 84233), (134, 84344), (135, 84353), (143, 84443), (144, 84446), (145, 84467), (146, 84488), (148, 84503),

Gene: Bipolarisk_139 Start: 81247, Stop: 82986, Start Num: 4

Candidate Starts for Bipolarisk_139:

(Start: 4 @81247 has 178 MA's), (Start: 5 @81265 has 3 MA's), (20, 81451), (25, 81514), (27, 81538), (39, 81679), (44, 81721), (45, 81733), (46, 81748), (50, 81802), (51, 81829), (62, 81943), (65, 81970), (74, 82105), (75, 82120), (78, 82144), (83, 82258), (88, 82363), (90, 82378), (91, 82384), (100, 82468), (107, 82546), (108, 82567), (109, 82576), (111, 82588), (116, 82627), (121, 82669), (123, 82690), (134, 82801), (135, 82810), (143, 82900), (144, 82903), (145, 82924), (146, 82945), (148, 82960),

Gene: Blackbrain_136 Start: 80018, Stop: 81757, Start Num: 4

Candidate Starts for Blackbrain_136:

(Start: 4 @80018 has 178 MA's), (Start: 5 @80036 has 3 MA's), (20, 80222), (25, 80285), (27, 80309), (39, 80450), (44, 80492), (45, 80504), (46, 80519), (50, 80573), (51, 80600), (62, 80714), (65, 80741), (74, 80876), (75, 80891), (78, 80915), (83, 81029), (88, 81134), (90, 81149), (91, 81155), (100, 81239), (107, 81317), (108, 81338), (109, 81347), (111, 81359), (116, 81398), (121, 81440), (123, 81461), (134, 81572), (135, 81581), (143, 81671), (144, 81674), (145, 81695), (146, 81716), (148, 81731),

Gene: Blackdragon_136 Start: 80662, Stop: 82401, Start Num: 4

Candidate Starts for Blackdragon_136:

(Start: 4 @80662 has 178 MA's), (Start: 5 @80680 has 3 MA's), (20, 80866), (25, 80929), (27, 80953), (39, 81094), (44, 81136), (45, 81148), (46, 81163), (50, 81217), (51, 81244), (61, 81352), (62, 81358), (65, 81385), (74, 81520), (75, 81535), (78, 81559), (83, 81673), (88, 81778), (90, 81793), (91, 81799), (100, 81883), (107, 81961), (108, 81982), (109, 81991), (111, 82003), (116, 82042), (121, 82084), (123, 82105), (134, 82216), (135, 82225), (143, 82315), (144, 82318), (145, 82339), (146, 82360), (148, 82375),

Gene: Blubba_132 Start: 82380, Stop: 84119, Start Num: 4

Candidate Starts for Blubba_132:

(Start: 4 @82380 has 178 MA's), (Start: 5 @82398 has 3 MA's), (9, 82422), (20, 82584), (25, 82647), (27, 82671), (39, 82812), (44, 82854), (45, 82866), (46, 82881), (50, 82935), (51, 82962), (61, 83070), (62, 83076), (65, 83103), (74, 83238), (75, 83253), (78, 83277), (83, 83391), (88, 83496), (90, 83511), (91, 83517), (100, 83601), (107, 83679), (108, 83700), (109, 83709), (111, 83721), (116, 83760), (121, 83802), (123, 83823), (134, 83934), (135, 83943), (143, 84033), (144, 84036), (145, 84057), (146, 84078), (148, 84093),

Gene: BobaPhatt_135 Start: 79597, Stop: 81336, Start Num: 4

Candidate Starts for BobaPhatt_135:

(Start: 4 @79597 has 178 MA's), (Start: 5 @79615 has 3 MA's), (20, 79801), (25, 79864), (27, 79888), (39, 80029), (44, 80071), (45, 80083), (46, 80098), (50, 80152), (51, 80179), (62, 80293), (65, 80320), (74, 80455), (75, 80470), (78, 80494), (83, 80608), (88, 80713), (90, 80728), (91, 80734), (100, 80818), (107, 80896), (108, 80917), (109, 80926), (111, 80938), (116, 80977), (121, 81019), (123, 81040), (134, 81151), (135, 81160), (143, 81250), (144, 81253), (145, 81274), (146, 81295), (148, 81310),

Gene: Bonray_141 Start: 81889, Stop: 83628, Start Num: 4

Candidate Starts for Bonray_141:

(Start: 4 @81889 has 178 MA's), (Start: 5 @81907 has 3 MA's), (20, 82093), (25, 82156), (27, 82180), (39, 82321), (44, 82363), (45, 82375), (46, 82390), (50, 82444), (51, 82471), (62, 82585), (65, 82612), (74, 82747), (75, 82762), (78, 82786), (83, 82900), (88, 83005), (90, 83020), (91, 83026), (100, 83110), (107, 83188), (108, 83209), (109, 83218), (111, 83230), (116, 83269), (121, 83311), (123, 83332), (134, 83443), (135, 83452), (143, 83542), (144, 83545), (145, 83566), (146, 83587), (148, 83602),

Gene: Bowman_137 Start: 80971, Stop: 82710, Start Num: 4

Candidate Starts for Bowman_137:

(Start: 4 @80971 has 178 MA's), (Start: 5 @80989 has 3 MA's), (20, 81175), (25, 81238), (27, 81262), (39, 81403), (44, 81445), (45, 81457), (46, 81472), (50, 81526), (51, 81553), (62, 81667), (65, 81694), (74, 81829), (75, 81844), (78, 81868), (83, 81982), (88, 82087), (89, 82093), (90, 82102), (91, 82108), (100, 82192), (107, 82270), (108, 82291), (109, 82300), (111, 82312), (116, 82351), (121, 82393), (123, 82414), (134, 82525), (135, 82534), (143, 82624), (144, 82627), (145, 82648), (146, 82669), (148, 82684),

Gene: Bread_139 Start: 81066, Stop: 82805, Start Num: 4

Candidate Starts for Bread_139:

(Start: 4 @81066 has 178 MA's), (Start: 5 @81084 has 3 MA's), (13, 81141), (20, 81270), (25, 81333), (27, 81357), (39, 81498), (44, 81540), (45, 81552), (46, 81567), (50, 81621), (51, 81648), (62, 81762), (65, 81789), (74, 81924), (75, 81939), (78, 81963), (83, 82077), (88, 82182), (90, 82197), (91, 82203), (100, 82287), (107, 82365), (108, 82386), (109, 82395), (111, 82407), (116, 82446), (121, 82488), (123, 82509), (134, 82620), (135, 82629), (143, 82719), (144, 82722), (145, 82743), (146, 82764), (148, 82779),

Gene: Breeniome_139 Start: 79423, Stop: 81162, Start Num: 4

Candidate Starts for Breeniome_139:

(Start: 4 @79423 has 178 MA's), (Start: 5 @79441 has 3 MA's), (13, 79498), (20, 79627), (25, 79690), (27, 79714), (39, 79855), (44, 79897), (45, 79909), (46, 79924), (50, 79978), (51, 80005), (62, 80119), (65, 80146), (74, 80281), (75, 80296), (78, 80320), (83, 80434), (88, 80539), (90, 80554), (91, 80560), (100, 80644), (107, 80722), (108, 80743), (109, 80752), (111, 80764), (116, 80803), (121, 80845), (123, 80866), (134, 80977), (135, 80986), (143, 81076), (144, 81079), (145, 81100), (146, 81121), (148, 81136),

Gene: Burrough_140 Start: 81574, Stop: 83313, Start Num: 4

Candidate Starts for Burrough_140:

(Start: 4 @81574 has 178 MA's), (Start: 5 @81592 has 3 MA's), (13, 81649), (20, 81778), (25, 81841), (27, 81865), (39, 82006), (44, 82048), (45, 82060), (46, 82075), (50, 82129), (51, 82156), (62, 82270), (65, 82297), (74, 82432), (75, 82447), (78, 82471), (83, 82585), (88, 82690), (90, 82705), (91, 82711), (100, 82795), (107, 82873), (108, 82894), (109, 82903), (111, 82915), (116, 82954), (121, 82996), (123, 83017), (134, 83128), (135, 83137), (143, 83227), (144, 83230), (145, 83251), (146, 83272), (148, 83287),

Gene: Bxz1_137 Start: 82777, Stop: 84516, Start Num: 4

Candidate Starts for Bxz1_137:

(Start: 4 @82777 has 178 MA's), (Start: 5 @82795 has 3 MA's), (13, 82852), (20, 82981), (25, 83044), (27, 83068), (39, 83209), (44, 83251), (45, 83263), (46, 83278), (50, 83332), (51, 83359), (62, 83473), (65, 83500), (74, 83635), (75, 83650), (78, 83674), (83, 83788), (88, 83893), (90, 83908), (91, 83914), (100, 83998), (107, 84076), (108, 84097), (109, 84106), (111, 84118), (116, 84157), (121, 84199), (123, 84220), (134, 84331), (135, 84340), (143, 84430), (144, 84433), (145, 84454), (146, 84475), (148, 84490),

Gene: Cactojaque_136 Start: 80125, Stop: 81864, Start Num: 4

Candidate Starts for Cactojaque_136:

(Start: 4 @80125 has 178 MA's), (Start: 5 @80143 has 3 MA's), (20, 80329), (25, 80392), (27, 80416), (39, 80557), (44, 80599), (45, 80611), (46, 80626), (50, 80680), (51, 80707), (62, 80821), (65, 80848), (74, 80983), (75, 80998), (78, 81022), (83, 81136), (88, 81241), (90, 81256), (91, 81262), (100, 81346), (107, 81424), (108, 81445), (109, 81454), (111, 81466), (116, 81505), (121, 81547), (123, 81568), (134, 81679), (135, 81688), (143, 81778), (144, 81781), (145, 81802), (146, 81823), (148, 81838),

Gene: Cali_135 Start: 81576, Stop: 83315, Start Num: 4

Candidate Starts for Cali_135:

(Start: 4 @81576 has 178 MA's), (Start: 5 @81594 has 3 MA's), (20, 81780), (25, 81843), (27, 81867), (39, 82008), (44, 82050), (45, 82062), (46, 82077), (50, 82131), (51, 82158), (61, 82266), (62, 82272), (65, 82299), (74, 82434), (75, 82449), (78, 82473), (83, 82587), (88, 82692), (90, 82707), (91, 82713), (100, 82797), (107, 82875), (108, 82896), (109, 82905), (111, 82917), (116, 82956), (121, 82998), (123, 83019), (134, 83130), (135, 83139), (143, 83229), (144, 83232), (145, 83253), (146, 83274), (148, 83289),

Gene: Cane17_132 Start: 82438, Stop: 84177, Start Num: 4

Candidate Starts for Cane17_132:

(Start: 4 @82438 has 178 MA's), (Start: 5 @82456 has 3 MA's), (9, 82480), (20, 82642), (25, 82705), (27, 82729), (39, 82870), (44, 82912), (45, 82924), (46, 82939), (50, 82993), (51, 83020), (61, 83128), (62, 83134), (65, 83161), (74, 83296), (75, 83311), (78, 83335), (83, 83449), (88, 83554), (90, 83569), (91, 83575), (100, 83659), (107, 83737), (108, 83758), (109, 83767), (111, 83779), (116, 83818), (121, 83860), (123, 83881), (134, 83992), (135, 84001), (143, 84091), (144, 84094), (145, 84115), (146, 84136), (148, 84151),

Gene: Capablanca_143 Start: 82305, Stop: 84044, Start Num: 4

Candidate Starts for Capablanca_143:

(Start: 4 @82305 has 178 MA's), (Start: 5 @82323 has 3 MA's), (20, 82509), (25, 82572), (27, 82596), (39, 82737), (44, 82779), (45, 82791), (46, 82806), (50, 82860), (51, 82887), (62, 83001), (65, 83028), (74, 83163), (75, 83178), (78, 83202), (83, 83316), (88, 83421), (90, 83436), (91, 83442), (100, 83526), (107, 83604), (108, 83625), (109, 83634), (111, 83646), (116, 83685), (121, 83727), (123, 83748), (134, 83859), (135, 83868), (143, 83958), (144, 83961), (145, 83982), (146, 84003), (148, 84018),

Gene: Caravan_134 Start: 80951, Stop: 82672, Start Num: 5

Candidate Starts for Caravan_134:

(Start: 4 @80933 has 178 MA's), (Start: 5 @80951 has 3 MA's), (20, 81137), (25, 81200), (27, 81224), (39, 81365), (44, 81407), (45, 81419), (46, 81434), (50, 81488), (51, 81515), (62, 81629), (65, 81656), (74, 81791), (75, 81806), (78, 81830), (83, 81944), (88, 82049), (90, 82064), (91, 82070), (100, 82154), (107, 82232), (108, 82253), (109, 82262), (111, 82274), (116, 82313), (121, 82355), (123, 82376), (134, 82487), (135, 82496), (143, 82586), (144, 82589), (145, 82610), (146, 82631), (148, 82646),

Gene: Catera_136 Start: 79840, Stop: 81579, Start Num: 4

Candidate Starts for Catera_136:

(Start: 4 @79840 has 178 MA's), (Start: 5 @79858 has 3 MA's), (20, 80044), (25, 80107), (27, 80131), (39, 80272), (44, 80314), (45, 80326), (46, 80341), (50, 80395), (51, 80422), (62, 80536), (65, 80563), (74, 80698), (75, 80713), (78, 80737), (83, 80851), (88, 80956), (90, 80971), (91, 80977), (100, 81061), (107, 81139), (108, 81160), (109, 81169), (111, 81181), (116, 81220), (121, 81262), (123, 81283), (134, 81394), (135, 81403), (143, 81493), (144, 81496), (145, 81517), (146, 81538), (148, 81553),

Gene: Chargie21_137 Start: 80133, Stop: 81872, Start Num: 4

Candidate Starts for Chargie21_137:

(Start: 4 @80133 has 178 MA's), (Start: 5 @80151 has 3 MA's), (20, 80337), (25, 80400), (27, 80424), (39, 80565), (44, 80607), (45, 80619), (46, 80634), (50, 80688), (51, 80715), (62, 80829), (65, 80856), (74, 80991), (75, 81006), (78, 81030), (83, 81144), (88, 81249), (90, 81264), (91, 81270), (100, 81354), (107, 81432), (108, 81453), (109, 81462), (111, 81474), (116, 81513), (121, 81555), (123, 81576), (134, 81687), (135, 81696), (143, 81786), (144, 81789), (145, 81810), (146, 81831), (148, 81846),

Gene: CharlieB_137 Start: 80459, Stop: 82198, Start Num: 4

Candidate Starts for CharlieB_137:

(Start: 4 @80459 has 178 MA's), (Start: 5 @80477 has 3 MA's), (20, 80663), (25, 80726), (27, 80750), (39, 80891), (44, 80933), (45, 80945), (46, 80960), (50, 81014), (51, 81041), (61, 81149), (62, 81155), (65, 81182), (74, 81317), (75, 81332), (78, 81356), (83, 81470), (88, 81575), (90, 81590), (91, 81596), (100, 81680), (107, 81758), (108, 81779), (109, 81788), (111, 81800), (116, 81839), (121, 81881), (123, 81902), (134, 82013), (135, 82022), (143, 82112), (144, 82115), (145, 82136), (146, 82157), (148, 82172),

Gene: ChaylaJr_136 Start: 79941, Stop: 81680, Start Num: 4

Candidate Starts for ChaylaJr_136:

(Start: 4 @79941 has 178 MA's), (Start: 5 @79959 has 3 MA's), (20, 80145), (25, 80208), (27, 80232), (39, 80373), (44, 80415), (45, 80427), (46, 80442), (50, 80496), (51, 80523), (61, 80631), (62, 80637), (65, 80664), (74, 80799), (75, 80814), (78, 80838), (83, 80952), (88, 81057), (90, 81072), (91, 81078), (100, 81162), (107, 81240), (108, 81261), (109, 81270), (111, 81282), (116, 81321), (121, 81363), (123, 81384), (134, 81495), (135, 81504), (143, 81594), (144, 81597), (145, 81618), (146, 81639), (148, 81654),

Gene: CherryTomatoes_129 Start: 84365, Stop: 86107, Start Num: 3

Candidate Starts for CherryTomatoes_129:

(Start: 3 @84365 has 11 MA's), (20, 84572), (22, 84623), (30, 84746), (36, 84785), (43, 84833), (48, 84887), (56, 85022), (62, 85064), (66, 85103), (69, 85133), (74, 85226), (80, 85334), (88, 85484), (90, 85499), (92, 85508), (97, 85559), (98, 85571), (100, 85589), (102, 85604), (108, 85688), (113, 85730), (115, 85745), (122, 85808), (123, 85811), (125, 85817), (126, 85823), (130, 85892), (134, 85922),

Gene: ChickenPhender_136 Start: 79765, Stop: 81504, Start Num: 4

Candidate Starts for ChickenPhender_136:

(Start: 4 @79765 has 178 MA's), (Start: 5 @79783 has 3 MA's), (20, 79969), (25, 80032), (27, 80056), (39, 80197), (44, 80239), (45, 80251), (46, 80266), (50, 80320), (51, 80347), (62, 80461), (65, 80488), (74, 80623), (75, 80638), (78, 80662), (83, 80776), (88, 80881), (90, 80896), (91, 80902), (100, 80986), (107, 81064), (108, 81085), (109, 81094), (111, 81106), (116, 81145), (121, 81187), (123, 81208), (134, 81319), (135, 81328), (143, 81418), (144, 81421), (145, 81442), (146, 81463), (148, 81478),

Gene: Chomp_140 Start: 81844, Stop: 83583, Start Num: 4

Candidate Starts for Chomp_140:

(Start: 4 @81844 has 178 MA's), (Start: 5 @81862 has 3 MA's), (20, 82048), (25, 82111), (27, 82135), (39, 82276), (44, 82318), (45, 82330), (46, 82345), (50, 82399), (51, 82426), (62, 82540), (65, 82567), (74, 82702), (75, 82717), (78, 82741), (83, 82855), (88, 82960), (90, 82975), (91, 82981), (100, 83065), (107, 83143), (108, 83164), (109, 83173), (111, 83185), (116, 83224), (121, 83266), (123, 83287), (134, 83398), (135, 83407), (143, 83497), (144, 83500), (145, 83521), (146, 83542), (148, 83557),

Gene: CindyLou_142 Start: 81884, Stop: 83623, Start Num: 4

Candidate Starts for CindyLou_142:

(Start: 4 @81884 has 178 MA's), (Start: 5 @81902 has 3 MA's), (20, 82088), (25, 82151), (27, 82175), (39, 82316), (44, 82358), (45, 82370), (46, 82385), (50, 82439), (51, 82466), (61, 82574), (62, 82580), (65, 82607), (74, 82742), (75, 82757), (78, 82781), (83, 82895), (88, 83000), (90, 83015), (91, 83021), (100, 83105), (107, 83183), (108, 83204), (109, 83213), (111, 83225), (116, 83264), (121, 83306),

(123, 83327), (134, 83438), (135, 83447), (143, 83537), (144, 83540), (145, 83561), (146, 83582), (148, 83597),

Gene: Cleatunium_133 Start: 80052, Stop: 81791, Start Num: 4

Candidate Starts for Cleatunium_133:

(Start: 4 @80052 has 178 MA's), (Start: 5 @80070 has 3 MA's), (20, 80256), (25, 80319), (27, 80343), (39, 80484), (44, 80526), (45, 80538), (46, 80553), (50, 80607), (51, 80634), (62, 80748), (65, 80775), (74, 80910), (75, 80925), (78, 80949), (83, 81063), (88, 81168), (89, 81174), (90, 81183), (91, 81189), (100, 81273), (107, 81351), (108, 81372), (109, 81381), (111, 81393), (116, 81432), (121, 81474), (123, 81495), (134, 81606), (135, 81615), (143, 81705), (144, 81708), (145, 81729), (146, 81750), (148, 81765),

Gene: Colt_132 Start: 82555, Stop: 84294, Start Num: 4

Candidate Starts for Colt_132:

(Start: 4 @82555 has 178 MA's), (Start: 5 @82573 has 3 MA's), (9, 82597), (20, 82759), (25, 82822), (27, 82846), (39, 82987), (44, 83029), (45, 83041), (46, 83056), (50, 83110), (51, 83137), (61, 83245), (62, 83251), (65, 83278), (74, 83413), (75, 83428), (78, 83452), (83, 83566), (88, 83671), (90, 83686), (91, 83692), (100, 83776), (107, 83854), (108, 83875), (109, 83884), (111, 83896), (116, 83935), (121, 83977), (123, 83998), (134, 84109), (135, 84118), (143, 84208), (144, 84211), (145, 84232), (146, 84253), (148, 84268),

Gene: Concombre_146 Start: 83738, Stop: 85477, Start Num: 4

Candidate Starts for Concombre_146:

(Start: 4 @83738 has 178 MA's), (Start: 5 @83756 has 3 MA's), (20, 83942), (25, 84005), (27, 84029), (39, 84170), (44, 84212), (45, 84224), (46, 84239), (50, 84293), (51, 84320), (62, 84434), (65, 84461), (74, 84596), (75, 84611), (78, 84635), (83, 84749), (88, 84854), (90, 84869), (91, 84875), (100, 84959), (107, 85037), (108, 85058), (109, 85067), (111, 85079), (116, 85118), (121, 85160), (123, 85181), (134, 85292), (135, 85301), (143, 85391), (144, 85394), (145, 85415), (146, 85436), (148, 85451),

Gene: DTDevon_140 Start: 81606, Stop: 83345, Start Num: 4

Candidate Starts for DTDevon_140:

(Start: 4 @81606 has 178 MA's), (Start: 5 @81624 has 3 MA's), (20, 81810), (25, 81873), (27, 81897), (39, 82038), (44, 82080), (45, 82092), (46, 82107), (50, 82161), (51, 82188), (61, 82296), (62, 82302), (65, 82329), (74, 82464), (75, 82479), (78, 82503), (83, 82617), (88, 82722), (90, 82737), (91, 82743), (100, 82827), (107, 82905), (108, 82926), (109, 82935), (111, 82947), (116, 82986), (121, 83028), (123, 83049), (134, 83160), (135, 83169), (143, 83259), (144, 83262), (145, 83283), (146, 83304), (148, 83319),

Gene: Daffodil_145 Start: 81547, Stop: 83286, Start Num: 4

Candidate Starts for Daffodil_145:

(Start: 4 @81547 has 178 MA's), (Start: 5 @81565 has 3 MA's), (20, 81751), (25, 81814), (27, 81838), (39, 81979), (44, 82021), (45, 82033), (46, 82048), (50, 82102), (51, 82129), (62, 82243), (65, 82270), (74, 82405), (75, 82420), (78, 82444), (83, 82558), (88, 82663), (90, 82678), (91, 82684), (100, 82768), (107, 82846), (108, 82867), (109, 82876), (111, 82888), (116, 82927), (121, 82969), (123, 82990), (134, 83101), (135, 83110), (143, 83200), (144, 83203), (145, 83224), (146, 83245), (148, 83260),

Gene: Dandelion_145 Start: 83739, Stop: 85478, Start Num: 4

Candidate Starts for Dandelion_145:

(Start: 4 @83739 has 178 MA's), (Start: 5 @83757 has 3 MA's), (20, 83943), (25, 84006), (27, 84030), (39, 84171), (44, 84213), (45, 84225), (46, 84240), (50, 84294), (51, 84321), (62, 84435), (65, 84462), (74, 84597), (75, 84612), (78, 84636), (83, 84750), (88, 84855), (90, 84870), (91, 84876), (100, 84960), (107, 85038), (108, 85059), (109, 85068), (111, 85080), (116, 85119), (121, 85161), (123, 85182), (134, 85293), (135, 85302), (143, 85392), (144, 85395), (145, 85416), (146, 85437), (148, 85452),

Gene: Darko_140 Start: 81239, Stop: 82978, Start Num: 4

Candidate Starts for Darko_140:

(Start: 4 @81239 has 178 MA's), (Start: 5 @81257 has 3 MA's), (20, 81443), (25, 81506), (27, 81530), (39, 81671), (44, 81713), (45, 81725), (46, 81740), (50, 81794), (51, 81821), (62, 81935), (65, 81962), (74, 82097), (75, 82112), (78, 82136), (83, 82250), (88, 82355), (89, 82361), (90, 82370), (91, 82376), (100, 82460), (107, 82538), (108, 82559), (109, 82568), (111, 82580), (116, 82619), (121, 82661), (123, 82682), (134, 82793), (135, 82802), (143, 82892), (144, 82895), (145, 82916), (146, 82937), (148, 82952),

Gene: Delilah_140 Start: 81701, Stop: 83440, Start Num: 4

Candidate Starts for Delilah_140:

(Start: 4 @81701 has 178 MA's), (Start: 5 @81719 has 3 MA's), (13, 81776), (20, 81905), (25, 81968), (27, 81992), (39, 82133), (44, 82175), (45, 82187), (46, 82202), (50, 82256), (51, 82283), (62, 82397), (65, 82424), (74, 82559), (75, 82574), (78, 82598), (83, 82712), (88, 82817), (90, 82832), (91, 82838), (100, 82922), (107, 83000), (108, 83021), (109, 83030), (111, 83042), (116, 83081), (121, 83123), (123, 83144), (134, 83255), (135, 83264), (143, 83354), (144, 83357), (145, 83378), (146, 83399), (148, 83414),

Gene: Delylah_143 Start: 81240, Stop: 82979, Start Num: 4

Candidate Starts for Delylah_143:

(Start: 4 @81240 has 178 MA's), (Start: 5 @81258 has 3 MA's), (20, 81444), (25, 81507), (27, 81531), (39, 81672), (44, 81714), (45, 81726), (46, 81741), (50, 81795), (51, 81822), (62, 81936), (65, 81963), (74, 82098), (75, 82113), (78, 82137), (83, 82251), (88, 82356), (90, 82371), (91, 82377), (100, 82461), (107, 82539), (108, 82560), (109, 82569), (111, 82581), (116, 82620), (121, 82662), (123, 82683), (134, 82794), (135, 82803), (143, 82893), (144, 82896), (145, 82917), (146, 82938), (148, 82953),

Gene: Demodog_147 Start: 83747, Stop: 85486, Start Num: 4

Candidate Starts for Demodog_147:

(Start: 4 @83747 has 178 MA's), (Start: 5 @83765 has 3 MA's), (20, 83951), (25, 84014), (27, 84038), (39, 84179), (44, 84221), (45, 84233), (46, 84248), (50, 84302), (51, 84329), (62, 84443), (65, 84470), (74, 84605), (75, 84620), (78, 84644), (83, 84758), (88, 84863), (90, 84878), (91, 84884), (100, 84968), (107, 85046), (108, 85067), (109, 85076), (111, 85088), (116, 85127), (121, 85169), (123, 85190), (134, 85301), (135, 85310), (143, 85400), (144, 85403), (145, 85424), (146, 85445), (148, 85460),

Gene: Derek_139 Start: 81166, Stop: 82905, Start Num: 4

Candidate Starts for Derek_139:

(Start: 4 @81166 has 178 MA's), (Start: 5 @81184 has 3 MA's), (20, 81370), (25, 81433), (27, 81457), (39, 81598), (44, 81640), (45, 81652), (46, 81667), (50, 81721), (51, 81748), (61, 81856), (62, 81862), (65, 81889), (74, 82024), (75, 82039), (78, 82063), (83, 82177), (88, 82282), (90, 82297), (91, 82303), (100, 82387), (107, 82465), (108, 82486), (109, 82495), (111, 82507), (116, 82546), (121, 82588), (123, 82609), (134, 82720), (135, 82729), (143, 82819), (144, 82822), (145, 82843), (146, 82864), (148, 82879),

Gene: Dessert_138 Start: 80121, Stop: 81860, Start Num: 4

Candidate Starts for Dessert_138:

(Start: 4 @80121 has 178 MA's), (Start: 5 @80139 has 3 MA's), (20, 80325), (25, 80388), (27, 80412), (39, 80553), (44, 80595), (45, 80607), (46, 80622), (50, 80676), (51, 80703), (62, 80817), (65, 80844), (74, 80979), (75, 80994), (78, 81018), (83, 81132), (88, 81237), (90, 81252), (91, 81258), (100, 81342), (107, 81420), (108, 81441), (109, 81450), (111, 81462), (116, 81501), (121, 81543), (123, 81564), (134, 81675), (135, 81684), (143, 81774), (144, 81777), (145, 81798), (146, 81819), (148, 81834),

Gene: Dietrick_132 Start: 79242, Stop: 80981, Start Num: 4

Candidate Starts for Dietrick_132:

(Start: 4 @79242 has 178 MA's), (Start: 5 @79260 has 3 MA's), (20, 79446), (25, 79509), (27, 79533), (39, 79674), (44, 79716), (45, 79728), (46, 79743), (50, 79797), (51, 79824), (62, 79938), (65, 79965), (74, 80100), (75, 80115), (78, 80139), (83, 80253), (88, 80358), (90, 80373), (91, 80379), (100, 80463), (107, 80541), (108, 80562), (109, 80571), (111, 80583), (116, 80622), (121, 80664), (123, 80685), (134, 80796), (135, 80805), (143, 80895), (144, 80898), (145, 80919), (146, 80940), (148, 80955),

Gene: DirtMonster_134 Start: 80500, Stop: 82239, Start Num: 4

Candidate Starts for DirtMonster_134:

(Start: 4 @80500 has 178 MA's), (Start: 5 @80518 has 3 MA's), (20, 80704), (25, 80767), (27, 80791), (39, 80932), (44, 80974), (45, 80986), (46, 81001), (50, 81055), (51, 81082), (62, 81196), (65, 81223), (74, 81358), (75, 81373), (78, 81397), (83, 81511), (88, 81616), (90, 81631), (91, 81637), (100, 81721), (107, 81799), (108, 81820), (109, 81829), (111, 81841), (116, 81880), (121, 81922), (123, 81943), (134, 82054), (135, 82063), (143, 82153), (144, 82156), (145, 82177), (146, 82198), (148, 82213),

Gene: Domi_133 Start: 80579, Stop: 82318, Start Num: 4

Candidate Starts for Domi_133:

(Start: 4 @80579 has 178 MA's), (Start: 5 @80597 has 3 MA's), (20, 80783), (25, 80846), (27, 80870), (39, 81011), (44, 81053), (45, 81065), (46, 81080), (50, 81134), (51, 81161), (62, 81275), (65, 81302), (74, 81437), (75, 81452), (78, 81476), (83, 81590), (88, 81695), (90, 81710), (91, 81716), (100, 81800), (107, 81878), (108, 81899), (109, 81908), (111, 81920), (116, 81959), (121, 82001), (123, 82022), (134, 82133), (135, 82142), (143, 82232), (144, 82235), (145, 82256), (146, 82277), (148, 82292),

Gene: DrPhinkDaddy_139 Start: 81759, Stop: 83498, Start Num: 4

Candidate Starts for DrPhinkDaddy_139:

(Start: 4 @81759 has 178 MA's), (Start: 5 @81777 has 3 MA's), (20, 81963), (25, 82026), (27, 82050), (39, 82191), (44, 82233), (45, 82245), (46, 82260), (50, 82314), (51, 82341), (62, 82455), (65, 82482), (74, 82617), (75, 82632), (78, 82656), (83, 82770), (88, 82875), (90, 82890), (91, 82896), (100, 82980), (107, 83058), (108, 83079), (109, 83088), (111, 83100), (116, 83139), (121, 83181), (123, 83202), (134, 83313), (135, 83322), (143, 83412), (144, 83415), (145, 83436), (146, 83457), (148, 83472),

Gene: Drazdys_138 Start: 80230, Stop: 81969, Start Num: 4

Candidate Starts for Drazdys_138:

(Start: 4 @80230 has 178 MA's), (Start: 5 @80248 has 3 MA's), (20, 80434), (25, 80497), (27, 80521), (39, 80662), (44, 80704), (45, 80716), (46, 80731), (50, 80785), (51, 80812), (62, 80926), (65, 80953), (74, 81088), (75, 81103), (78, 81127), (83, 81241), (88, 81346), (90, 81361), (91, 81367), (100, 81451), (107, 81529), (108, 81550), (109, 81559), (111, 81571), (116, 81610), (121, 81652), (123, 81673), (134, 81784), (135, 81793), (143, 81883), (144, 81886), (145, 81907), (146, 81928), (148, 81943),

Gene: Duckfeet_134 Start: 80171, Stop: 81910, Start Num: 4

Candidate Starts for Duckfeet_134:

(Start: 4 @80171 has 178 MA's), (Start: 5 @80189 has 3 MA's), (20, 80375), (25, 80438), (27, 80462), (39, 80603), (44, 80645), (45, 80657), (46, 80672), (50, 80726), (51, 80753), (62, 80867), (65, 80894), (74, 81029), (75, 81044), (78, 81068), (83, 81182), (88, 81287), (90, 81302), (91, 81308), (100, 81392), (107, 81470), (108, 81491), (109, 81500), (111, 81512), (116, 81551), (121, 81593), (123, 81614), (134, 81725), (135, 81734), (143, 81824), (144, 81827), (145, 81848), (146, 81869), (148, 81884),

Gene: E3_gp122 Start: 76468, Stop: 78309, Start Num: 2

Candidate Starts for E3_gp122:

(2, 76468), (12, 76540), (23, 76729), (26, 76759), (28, 76768), (30, 76846), (31, 76849), (36, 76885), (44, 76942), (57, 77125), (58, 77137), (61, 77158), (69, 77242), (73, 77335), (76, 77368), (88, 77644), (91, 77665), (92, 77668), (99, 77734), (103, 77773), (104, 77791), (105, 77842), (106, 77845), (107, 77848), (109, 77878), (119, 77962), (129, 78067), (133, 78094), (134, 78103), (136, 78121), (139,

78178), (140, 78181),

Gene: ET08_128 Start: 80220, Stop: 81959, Start Num: 4

Candidate Starts for ET08_128:

(Start: 4 @80220 has 178 MA's), (Start: 5 @80238 has 3 MA's), (20, 80424), (25, 80487), (27, 80511), (39, 80652), (44, 80694), (45, 80706), (46, 80721), (50, 80775), (51, 80802), (62, 80916), (65, 80943), (74, 81078), (75, 81093), (78, 81117), (83, 81231), (88, 81336), (90, 81351), (91, 81357), (100, 81441), (107, 81519), (108, 81540), (109, 81549), (111, 81561), (116, 81600), (121, 81642), (123, 81663), (134, 81774), (135, 81783), (143, 81873), (144, 81876), (145, 81897), (146, 81918), (148, 81933),

Gene: EasyJones_143 Start: 80787, Stop: 82526, Start Num: 4

Candidate Starts for EasyJones_143:

(Start: 4 @80787 has 178 MA's), (Start: 5 @80805 has 3 MA's), (20, 80991), (25, 81054), (27, 81078), (39, 81219), (44, 81261), (45, 81273), (46, 81288), (50, 81342), (51, 81369), (62, 81483), (65, 81510), (74, 81645), (75, 81660), (78, 81684), (83, 81798), (88, 81903), (90, 81918), (91, 81924), (100, 82008), (107, 82086), (108, 82107), (109, 82116), (111, 82128), (116, 82167), (121, 82209), (123, 82230), (134, 82341), (135, 82350), (143, 82440), (144, 82443), (145, 82464), (146, 82485), (148, 82500),

Gene: EggyFarm_148 Start: 83505, Stop: 85244, Start Num: 4

Candidate Starts for EggyFarm_148:

(Start: 4 @83505 has 178 MA's), (Start: 5 @83523 has 3 MA's), (20, 83709), (25, 83772), (27, 83796), (39, 83937), (44, 83979), (45, 83991), (46, 84006), (50, 84060), (51, 84087), (62, 84201), (65, 84228), (74, 84363), (75, 84378), (78, 84402), (83, 84516), (88, 84621), (90, 84636), (91, 84642), (100, 84726), (107, 84804), (108, 84825), (109, 84834), (111, 84846), (116, 84885), (121, 84927), (123, 84948), (134, 85059), (135, 85068), (143, 85158), (144, 85161), (145, 85182), (146, 85203), (148, 85218),

Gene: EmToTheThree_142 Start: 82499, Stop: 84238, Start Num: 4

Candidate Starts for EmToTheThree_142:

(Start: 4 @82499 has 178 MA's), (Start: 5 @82517 has 3 MA's), (20, 82703), (25, 82766), (27, 82790), (39, 82931), (44, 82973), (45, 82985), (46, 83000), (50, 83054), (51, 83081), (62, 83195), (65, 83222), (74, 83357), (75, 83372), (78, 83396), (83, 83510), (88, 83615), (90, 83630), (91, 83636), (100, 83720), (107, 83798), (108, 83819), (109, 83828), (111, 83840), (116, 83879), (121, 83921), (123, 83942), (134, 84053), (135, 84062), (143, 84152), (144, 84155), (145, 84176), (146, 84197), (148, 84212),

Gene: EmmaElysia_141 Start: 80774, Stop: 82513, Start Num: 4

Candidate Starts for EmmaElysia_141:

(Start: 4 @80774 has 178 MA's), (Start: 5 @80792 has 3 MA's), (20, 80978), (25, 81041), (27, 81065), (39, 81206), (44, 81248), (45, 81260), (46, 81275), (50, 81329), (51, 81356), (61, 81464), (62, 81470), (65, 81497), (74, 81632), (75, 81647), (78, 81671), (83, 81785), (88, 81890), (90, 81905), (91, 81911), (100, 81995), (107, 82073), (108, 82094), (109, 82103), (111, 82115), (116, 82154), (121, 82196), (123, 82217), (134, 82328), (135, 82337), (143, 82427), (144, 82430), (145, 82451), (146, 82472), (148, 82487),

Gene: Erdmann_140 Start: 81548, Stop: 83287, Start Num: 4

Candidate Starts for Erdmann_140:

(Start: 4 @81548 has 178 MA's), (Start: 5 @81566 has 3 MA's), (20, 81752), (25, 81815), (27, 81839), (39, 81980), (44, 82022), (45, 82034), (46, 82049), (50, 82103), (51, 82130), (62, 82244), (65, 82271), (74, 82406), (75, 82421), (78, 82445), (83, 82559), (88, 82664), (90, 82679), (91, 82685), (100, 82769), (107, 82847), (108, 82868), (109, 82877), (111, 82889), (116, 82928), (121, 82970), (123, 82991), (134, 83102), (135, 83111), (143, 83201), (144, 83204), (145, 83225), (146, 83246), (148, 83261),

Gene: ErnieJ_134 Start: 79517, Stop: 81256, Start Num: 4

Candidate Starts for ErnieJ_134:

(Start: 4 @79517 has 178 MA's), (Start: 5 @79535 has 3 MA's), (20, 79721), (25, 79784), (27, 79808), (39, 79949), (44, 79991), (45, 80003), (46, 80018), (50, 80072), (51, 80099), (61, 80207), (62, 80213), (65, 80240), (74, 80375), (75, 80390), (78, 80414), (83, 80528), (88, 80633), (90, 80648), (91, 80654), (100, 80738), (107, 80816), (108, 80837), (109, 80846), (111, 80858), (116, 80897), (121, 80939), (123, 80960), (134, 81071), (135, 81080), (143, 81170), (144, 81173), (145, 81194), (146, 81215), (148, 81230),

Gene: Essence_137 Start: 80396, Stop: 82135, Start Num: 4

Candidate Starts for Essence_137:

(Start: 4 @80396 has 178 MA's), (Start: 5 @80414 has 3 MA's), (20, 80600), (25, 80663), (27, 80687), (39, 80828), (44, 80870), (45, 80882), (46, 80897), (50, 80951), (51, 80978), (61, 81086), (62, 81092), (65, 81119), (74, 81254), (75, 81269), (78, 81293), (83, 81407), (88, 81512), (90, 81527), (91, 81533), (100, 81617), (107, 81695), (108, 81716), (109, 81725), (111, 81737), (116, 81776), (121, 81818), (123, 81839), (134, 81950), (135, 81959), (143, 82049), (144, 82052), (145, 82073), (146, 82094), (148, 82109),

Gene: Ewok_141 Start: 80925, Stop: 82664, Start Num: 4

Candidate Starts for Ewok_141:

(Start: 4 @80925 has 178 MA's), (Start: 5 @80943 has 3 MA's), (20, 81129), (25, 81192), (27, 81216), (39, 81357), (44, 81399), (45, 81411), (46, 81426), (50, 81480), (51, 81507), (62, 81621), (65, 81648), (74, 81783), (75, 81798), (78, 81822), (83, 81936), (88, 82041), (90, 82056), (91, 82062), (100, 82146), (107, 82224), (108, 82245), (109, 82254), (111, 82266), (116, 82305), (121, 82347), (123, 82368), (134, 82479), (135, 82488), (143, 82578), (144, 82581), (145, 82602), (146, 82623), (148, 82638),

Gene: Finch_56 Start: 45722, Stop: 47482, Start Num: 3

Candidate Starts for Finch_56:

(Start: 3 @45722 has 11 MA's), (6, 45746), (7, 45755), (8, 45758), (18, 45887), (22, 45980), (24, 45986), (28, 46022), (34, 46127), (38, 46151), (40, 46163), (41, 46172), (42, 46184), (51, 46304), (55, 46373), (59, 46397), (61, 46412), (66, 46457), (69, 46487), (70, 46517), (71, 46535), (75, 46595), (76, 46598), (77, 46613), (78, 46619), (79, 46682), (80, 46688), (81, 46694), (82, 46718), (84, 46736), (86, 46793), (87, 46799), (88, 46841), (92, 46865), (94, 46886), (97, 46934), (99, 46949), (107, 47042), (110, 47075), (114, 47117), (126, 47198), (127, 47231), (129, 47261), (130, 47267), (131, 47282), (134, 47297), (135, 47306), (136, 47315), (141, 47363), (145, 47420), (148, 47456),

Gene: Fixie_138 Start: 80668, Stop: 82407, Start Num: 4

Candidate Starts for Fixie_138:

(Start: 4 @80668 has 178 MA's), (Start: 5 @80686 has 3 MA's), (20, 80872), (25, 80935), (27, 80959), (39, 81100), (44, 81142), (45, 81154), (46, 81169), (50, 81223), (51, 81250), (62, 81364), (65, 81391), (74, 81526), (75, 81541), (78, 81565), (83, 81679), (88, 81784), (90, 81799), (91, 81805), (100, 81889), (107, 81967), (108, 81988), (109, 81997), (111, 82009), (116, 82048), (121, 82090), (123, 82111), (134, 82222), (135, 82231), (143, 82321), (144, 82324), (145, 82345), (146, 82366), (148, 82381),

Gene: Flabslab_135 Start: 79107, Stop: 80846, Start Num: 4

Candidate Starts for Flabslab_135:

(Start: 4 @79107 has 178 MA's), (Start: 5 @79125 has 3 MA's), (20, 79311), (25, 79374), (27, 79398), (39, 79539), (44, 79581), (45, 79593), (46, 79608), (50, 79662), (51, 79689), (61, 79797), (62, 79803), (65, 79830), (74, 79965), (75, 79980), (78, 80004), (83, 80118), (88, 80223), (90, 80238), (91, 80244), (100, 80328), (107, 80406), (108, 80427), (109, 80436), (111, 80448), (116, 80487), (121, 80529), (123, 80550), (134, 80661), (135, 80670), (143, 80760), (144, 80763), (145, 80784), (146, 80805), (148, 80820),

Gene: Fludd_141 Start: 80573, Stop: 82312, Start Num: 4

Candidate Starts for Fludd_141:

(Start: 4 @80573 has 178 MA's), (Start: 5 @80591 has 3 MA's), (20, 80777), (25, 80840), (27, 80864), (39, 81005), (44, 81047), (45, 81059), (46, 81074), (50, 81128), (51, 81155), (62, 81269), (65, 81296), (74, 81431), (75, 81446), (78, 81470), (83, 81584), (88, 81689), (90, 81704), (91, 81710), (100, 81794), (107, 81872), (108, 81893), (109, 81902), (111, 81914), (116, 81953), (121, 81995), (123, 82016), (134, 82127), (135, 82136), (143, 82226), (144, 82229), (145, 82250), (146, 82271), (148, 82286),

Gene: Fongie_138 Start: 81139, Stop: 82878, Start Num: 4

Candidate Starts for Fongie_138:

(Start: 4 @81139 has 178 MA's), (Start: 5 @81157 has 3 MA's), (13, 81214), (20, 81343), (25, 81406), (27, 81430), (39, 81571), (44, 81613), (45, 81625), (46, 81640), (50, 81694), (51, 81721), (62, 81835), (65, 81862), (74, 81997), (75, 82012), (78, 82036), (83, 82150), (88, 82255), (90, 82270), (91, 82276), (100, 82360), (107, 82438), (108, 82459), (109, 82468), (111, 82480), (116, 82519), (121, 82561), (123, 82582), (134, 82693), (135, 82702), (143, 82792), (144, 82795), (145, 82816), (146, 82837), (148, 82852),

Gene: FoxtrotP1_140 Start: 82708, Stop: 84447, Start Num: 4

Candidate Starts for FoxtrotP1_140:

(Start: 4 @82708 has 178 MA's), (Start: 5 @82726 has 3 MA's), (20, 82912), (25, 82975), (27, 82999), (39, 83140), (44, 83182), (45, 83194), (46, 83209), (50, 83263), (51, 83290), (62, 83404), (65, 83431), (74, 83566), (75, 83581), (78, 83605), (83, 83719), (88, 83824), (90, 83839), (91, 83845), (100, 83929), (107, 84007), (108, 84028), (109, 84037), (111, 84049), (116, 84088), (121, 84130), (123, 84151), (134, 84262), (135, 84271), (143, 84361), (144, 84364), (145, 84385), (146, 84406), (148, 84421),

Gene: FrayBell_145 Start: 81872, Stop: 83611, Start Num: 4

Candidate Starts for FrayBell_145:

(Start: 4 @81872 has 178 MA's), (Start: 5 @81890 has 3 MA's), (20, 82076), (25, 82139), (27, 82163), (39, 82304), (44, 82346), (45, 82358), (46, 82373), (50, 82427), (51, 82454), (62, 82568), (65, 82595), (74, 82730), (75, 82745), (78, 82769), (83, 82883), (88, 82988), (89, 82994), (90, 83003), (91, 83009), (100, 83093), (107, 83171), (108, 83192), (109, 83201), (111, 83213), (116, 83252), (121, 83294), (123, 83315), (134, 83426), (135, 83435), (143, 83525), (144, 83528), (145, 83549), (146, 83570), (148, 83585),

Gene: FudgeTart_138 Start: 80579, Stop: 82318, Start Num: 4

Candidate Starts for FudgeTart_138:

(Start: 4 @80579 has 178 MA's), (Start: 5 @80597 has 3 MA's), (13, 80654), (20, 80783), (25, 80846), (27, 80870), (39, 81011), (44, 81053), (45, 81065), (46, 81080), (50, 81134), (51, 81161), (62, 81275), (65, 81302), (74, 81437), (75, 81452), (78, 81476), (83, 81590), (88, 81695), (90, 81710), (91, 81716), (100, 81800), (107, 81878), (108, 81899), (109, 81908), (111, 81920), (116, 81959), (121, 82001), (123, 82022), (134, 82133), (135, 82142), (143, 82232), (144, 82235), (145, 82256), (146, 82277), (148, 82292),

Gene: Gabriel_140 Start: 79802, Stop: 81541, Start Num: 4

Candidate Starts for Gabriel_140:

(Start: 4 @79802 has 178 MA's), (Start: 5 @79820 has 3 MA's), (20, 80006), (25, 80069), (27, 80093), (39, 80234), (44, 80276), (45, 80288), (46, 80303), (50, 80357), (51, 80384), (62, 80498), (65, 80525), (74, 80660), (75, 80675), (78, 80699), (83, 80813), (88, 80918), (90, 80933), (91, 80939), (100, 81023), (107, 81101), (108, 81122), (109, 81131), (111, 81143), (116, 81182), (121, 81224), (123, 81245), (134, 81356), (135, 81365), (143, 81455), (144, 81458), (145, 81479), (146, 81500), (148, 81515),

Gene: Gamgam_141 Start: 80545, Stop: 82284, Start Num: 4

Candidate Starts for Gamgam_141:

(Start: 4 @80545 has 178 MA's), (Start: 5 @80563 has 3 MA's), (20, 80749), (25, 80812), (27, 80836), (39, 80977), (44, 81019), (45, 81031), (46, 81046), (50, 81100), (51, 81127), (62, 81241), (65, 81268),

(74, 81403), (75, 81418), (78, 81442), (83, 81556), (88, 81661), (90, 81676), (91, 81682), (100, 81766), (107, 81844), (108, 81865), (109, 81874), (111, 81886), (116, 81925), (121, 81967), (123, 81988), (134, 82099), (135, 82108), (143, 82198), (144, 82201), (145, 82222), (146, 82243), (148, 82258),

Gene: Ghost_139 Start: 80555, Stop: 82294, Start Num: 4

Candidate Starts for Ghost_139:

(Start: 4 @80555 has 178 MA's), (Start: 5 @80573 has 3 MA's), (20, 80759), (25, 80822), (27, 80846), (39, 80987), (44, 81029), (45, 81041), (46, 81056), (50, 81110), (51, 81137), (62, 81251), (65, 81278), (74, 81413), (75, 81428), (78, 81452), (83, 81566), (88, 81671), (90, 81686), (91, 81692), (100, 81776), (107, 81854), (108, 81875), (109, 81884), (111, 81896), (116, 81935), (121, 81977), (123, 81998), (134, 82109), (135, 82118), (143, 82208), (144, 82211), (145, 82232), (146, 82253), (148, 82268),

Gene: Gizmo_145 Start: 83177, Stop: 84916, Start Num: 4

Candidate Starts for Gizmo_145:

(Start: 4 @83177 has 178 MA's), (Start: 5 @83195 has 3 MA's), (13, 83252), (20, 83381), (25, 83444), (27, 83468), (39, 83609), (44, 83651), (45, 83663), (46, 83678), (50, 83732), (51, 83759), (62, 83873), (65, 83900), (74, 84035), (75, 84050), (78, 84074), (83, 84188), (88, 84293), (90, 84308), (91, 84314), (100, 84398), (107, 84476), (108, 84497), (109, 84506), (111, 84518), (116, 84557), (121, 84599), (123, 84620), (134, 84731), (135, 84740), (143, 84830), (144, 84833), (145, 84854), (146, 84875), (148, 84890),

Gene: GlutenPhree_142 Start: 80555, Stop: 82294, Start Num: 4

Candidate Starts for GlutenPhree_142:

(Start: 4 @80555 has 178 MA's), (Start: 5 @80573 has 3 MA's), (20, 80759), (25, 80822), (27, 80846), (39, 80987), (44, 81029), (45, 81041), (46, 81056), (50, 81110), (51, 81137), (62, 81251), (65, 81278), (74, 81413), (75, 81428), (78, 81452), (83, 81566), (88, 81671), (90, 81686), (91, 81692), (100, 81776), (107, 81854), (108, 81875), (109, 81884), (111, 81896), (116, 81935), (121, 81977), (123, 81998), (134, 82109), (135, 82118), (143, 82208), (144, 82211), (145, 82232), (146, 82253), (148, 82268),

Gene: Grasshills_147 Start: 83505, Stop: 85244, Start Num: 4

Candidate Starts for Grasshills_147:

(Start: 4 @83505 has 178 MA's), (Start: 5 @83523 has 3 MA's), (20, 83709), (25, 83772), (27, 83796), (39, 83937), (44, 83979), (45, 83991), (46, 84006), (50, 84060), (51, 84087), (62, 84201), (65, 84228), (74, 84363), (75, 84378), (78, 84402), (83, 84516), (88, 84621), (90, 84636), (91, 84642), (100, 84726), (107, 84804), (108, 84825), (109, 84834), (111, 84846), (116, 84885), (121, 84927), (123, 84948), (134, 85059), (135, 85068), (143, 85158), (144, 85161), (145, 85182), (146, 85203), (148, 85218),

Gene: Greely_139 Start: 81330, Stop: 83072, Start Num: 3

Candidate Starts for Greely_139:

(Start: 3 @81330 has 11 MA's), (7, 81363), (10, 81381), (Start: 16 @81441 has 1 MA's), (21, 81585), (25, 81600), (30, 81711), (39, 81765), (41, 81783), (49, 81864), (51, 81915), (52, 81948), (65, 82056), (69, 82098), (75, 82206), (76, 82209), (77, 82224), (83, 82344), (87, 82410), (88, 82449), (90, 82464), (97, 82524), (133, 82878), (134, 82887), (136, 82905), (141, 82953), (142, 82977), (147, 83037),

Gene: Grungle_127 Start: 77820, Stop: 79559, Start Num: 4

Candidate Starts for Grungle_127:

(Start: 4 @77820 has 178 MA's), (Start: 5 @77838 has 3 MA's), (13, 77895), (20, 78024), (25, 78087), (27, 78111), (39, 78252), (44, 78294), (45, 78306), (46, 78321), (50, 78375), (51, 78402), (62, 78516), (65, 78543), (74, 78678), (75, 78693), (78, 78717), (83, 78831), (88, 78936), (90, 78951), (91, 78957), (100, 79041), (107, 79119), (108, 79140), (109, 79149), (111, 79161), (116, 79200), (121, 79242), (123, 79263), (134, 79374), (135, 79383), (143, 79473), (144, 79476), (145, 79497), (146, 79518), (148, 79533),

Gene: Guwapp_139 Start: 79967, Stop: 81706, Start Num: 4

Candidate Starts for Guwapp_139:

(Start: 4 @79967 has 178 MA's), (Start: 5 @79985 has 3 MA's), (20, 80171), (25, 80234), (27, 80258), (39, 80399), (44, 80441), (45, 80453), (46, 80468), (50, 80522), (51, 80549), (61, 80657), (62, 80663), (65, 80690), (74, 80825), (75, 80840), (78, 80864), (83, 80978), (88, 81083), (90, 81098), (91, 81104), (100, 81188), (107, 81266), (108, 81287), (109, 81296), (111, 81308), (116, 81347), (121, 81389), (123, 81410), (134, 81521), (135, 81530), (143, 81620), (144, 81623), (145, 81644), (146, 81665), (148, 81680),

Gene: Halldule_134 Start: 78846, Stop: 80585, Start Num: 4

Candidate Starts for Halldule_134:

(Start: 4 @78846 has 178 MA's), (Start: 5 @78864 has 3 MA's), (20, 79050), (25, 79113), (27, 79137), (39, 79278), (44, 79320), (45, 79332), (46, 79347), (50, 79401), (51, 79428), (62, 79542), (65, 79569), (74, 79704), (75, 79719), (78, 79743), (83, 79857), (88, 79962), (90, 79977), (91, 79983), (100, 80067), (107, 80145), (108, 80166), (109, 80175), (111, 80187), (116, 80226), (121, 80268), (123, 80289), (134, 80400), (135, 80409), (143, 80499), (144, 80502), (145, 80523), (146, 80544), (148, 80559),

Gene: HyRo_131 Start: 80498, Stop: 82237, Start Num: 4

Candidate Starts for HyRo_131:

(Start: 4 @80498 has 178 MA's), (Start: 5 @80516 has 3 MA's), (13, 80573), (20, 80702), (25, 80765), (27, 80789), (39, 80930), (44, 80972), (45, 80984), (46, 80999), (50, 81053), (51, 81080), (62, 81194), (65, 81221), (74, 81356), (75, 81371), (78, 81395), (83, 81509), (88, 81614), (90, 81629), (91, 81635), (100, 81719), (107, 81797), (108, 81818), (109, 81827), (111, 81839), (116, 81878), (121, 81920), (123, 81941), (134, 82052), (135, 82061), (143, 82151), (144, 82154), (145, 82175), (146, 82196), (148, 82211),

Gene: I3_145 Start: 82033, Stop: 83772, Start Num: 4

Candidate Starts for I3_145:

(Start: 4 @82033 has 178 MA's), (Start: 5 @82051 has 3 MA's), (20, 82237), (25, 82300), (27, 82324), (39, 82465), (44, 82507), (45, 82519), (46, 82534), (50, 82588), (51, 82615), (61, 82723), (62, 82729), (65, 82756), (74, 82891), (75, 82906), (78, 82930), (83, 83044), (88, 83149), (90, 83164), (91, 83170), (100, 83254), (107, 83332), (108, 83353), (109, 83362), (111, 83374), (116, 83413), (121, 83455), (123, 83476), (134, 83587), (135, 83596), (143, 83686), (144, 83689), (145, 83710), (146, 83731), (148, 83746),

Gene: IkeLoa_134 Start: 80453, Stop: 82192, Start Num: 4

Candidate Starts for IkeLoa_134:

(Start: 4 @80453 has 178 MA's), (Start: 5 @80471 has 3 MA's), (20, 80657), (25, 80720), (27, 80744), (39, 80885), (44, 80927), (45, 80939), (46, 80954), (50, 81008), (51, 81035), (62, 81149), (65, 81176), (74, 81311), (75, 81326), (78, 81350), (83, 81464), (88, 81569), (90, 81584), (91, 81590), (100, 81674), (107, 81752), (108, 81773), (109, 81782), (111, 81794), (116, 81833), (121, 81875), (123, 81896), (134, 82007), (135, 82016), (143, 82106), (144, 82109), (145, 82130), (146, 82151), (148, 82166),

Gene: InigoMontoya_143 Start: 80516, Stop: 82255, Start Num: 4

Candidate Starts for InigoMontoya_143:

(Start: 4 @80516 has 178 MA's), (Start: 5 @80534 has 3 MA's), (20, 80720), (25, 80783), (27, 80807), (39, 80948), (44, 80990), (45, 81002), (46, 81017), (50, 81071), (51, 81098), (62, 81212), (65, 81239), (74, 81374), (75, 81389), (78, 81413), (83, 81527), (88, 81632), (90, 81647), (91, 81653), (100, 81737), (107, 81815), (108, 81836), (109, 81845), (111, 81857), (116, 81896), (121, 81938), (123, 81959), (134, 82070), (135, 82079), (143, 82169), (144, 82172), (145, 82193), (146, 82214), (148, 82229),

Gene: InterFolia_146 Start: 82807, Stop: 84546, Start Num: 4

Candidate Starts for InterFolia_146:

(Start: 4 @82807 has 178 MA's), (Start: 5 @82825 has 3 MA's), (20, 83011), (25, 83074), (27, 83098), (39, 83239), (44, 83281), (45, 83293), (46, 83308), (50, 83362), (51, 83389), (61, 83497), (62, 83503), (65, 83530), (74, 83665), (75, 83680), (78, 83704), (83, 83818), (88, 83923), (90, 83938), (91, 83944), (100, 84028), (107, 84106), (108, 84127), (109, 84136), (111, 84148), (116, 84187), (121, 84229), (123, 84250), (134, 84361), (135, 84370), (143, 84460), (144, 84463), (145, 84484), (146, 84505), (148, 84520),

Gene: Iota_135 Start: 80504, Stop: 82243, Start Num: 4

Candidate Starts for Iota_135:

(Start: 4 @80504 has 178 MA's), (Start: 5 @80522 has 3 MA's), (20, 80708), (25, 80771), (27, 80795), (39, 80936), (44, 80978), (45, 80990), (46, 81005), (50, 81059), (51, 81086), (61, 81194), (62, 81200), (65, 81227), (74, 81362), (75, 81377), (78, 81401), (83, 81515), (88, 81620), (90, 81635), (91, 81641), (100, 81725), (107, 81803), (108, 81824), (109, 81833), (111, 81845), (116, 81884), (121, 81926), (123, 81947), (134, 82058), (135, 82067), (143, 82157), (144, 82160), (145, 82181), (146, 82202), (148, 82217),

Gene: Issimir_138 Start: 81512, Stop: 83251, Start Num: 4

Candidate Starts for Issimir_138:

(Start: 4 @81512 has 178 MA's), (Start: 5 @81530 has 3 MA's), (20, 81716), (25, 81779), (27, 81803), (39, 81944), (44, 81986), (45, 81998), (46, 82013), (50, 82067), (51, 82094), (62, 82208), (65, 82235), (74, 82370), (75, 82385), (78, 82409), (83, 82523), (88, 82628), (90, 82643), (91, 82649), (100, 82733), (107, 82811), (108, 82832), (109, 82841), (111, 82853), (116, 82892), (121, 82934), (123, 82955), (134, 83066), (135, 83075), (143, 83165), (144, 83168), (145, 83189), (146, 83210), (148, 83225),

Gene: Izajani_140 Start: 81718, Stop: 83457, Start Num: 4

Candidate Starts for Izajani_140:

(Start: 4 @81718 has 178 MA's), (Start: 5 @81736 has 3 MA's), (20, 81922), (25, 81985), (27, 82009), (39, 82150), (44, 82192), (45, 82204), (46, 82219), (50, 82273), (51, 82300), (62, 82414), (65, 82441), (74, 82576), (75, 82591), (78, 82615), (83, 82729), (88, 82834), (90, 82849), (91, 82855), (100, 82939), (107, 83017), (108, 83038), (109, 83047), (111, 83059), (116, 83098), (121, 83140), (123, 83161), (134, 83272), (135, 83281), (143, 83371), (144, 83374), (145, 83395), (146, 83416), (148, 83431),

Gene: JPickles_137 Start: 79307, Stop: 81046, Start Num: 4

Candidate Starts for JPickles_137:

(Start: 4 @79307 has 178 MA's), (Start: 5 @79325 has 3 MA's), (20, 79511), (25, 79574), (27, 79598), (39, 79739), (44, 79781), (45, 79793), (46, 79808), (50, 79862), (51, 79889), (62, 80003), (65, 80030), (74, 80165), (75, 80180), (78, 80204), (83, 80318), (88, 80423), (90, 80438), (91, 80444), (100, 80528), (107, 80606), (108, 80627), (109, 80636), (111, 80648), (116, 80687), (121, 80729), (123, 80750), (134, 80861), (135, 80870), (143, 80960), (144, 80963), (145, 80984), (146, 81005), (148, 81020),

Gene: Janiyra_143 Start: 81482, Stop: 83221, Start Num: 4

Candidate Starts for Janiyra_143:

(Start: 4 @81482 has 178 MA's), (Start: 5 @81500 has 3 MA's), (20, 81686), (25, 81749), (27, 81773), (39, 81914), (44, 81956), (45, 81968), (46, 81983), (50, 82037), (51, 82064), (62, 82178), (65, 82205), (74, 82340), (75, 82355), (78, 82379), (83, 82493), (88, 82598), (90, 82613), (91, 82619), (100, 82703), (107, 82781), (108, 82802), (109, 82811), (111, 82823), (116, 82862), (121, 82904), (123, 82925), (134, 83036), (135, 83045), (143, 83135), (144, 83138), (145, 83159), (146, 83180), (148, 83195),

Gene: JayJay_145 Start: 82513, Stop: 84252, Start Num: 4

Candidate Starts for JayJay_145:

(Start: 4 @82513 has 178 MA's), (Start: 5 @82531 has 3 MA's), (20, 82717), (25, 82780), (27, 82804), (39, 82945), (44, 82987), (45, 82999), (46, 83014), (50, 83068), (51, 83095), (61, 83203), (62, 83209), (65, 83236), (74, 83371), (75, 83386), (78, 83410), (83, 83524), (88, 83629), (90, 83644), (91, 83650),

(100, 83734), (107, 83812), (108, 83833), (109, 83842), (111, 83854), (116, 83893), (121, 83935), (123, 83956), (134, 84067), (135, 84076), (143, 84166), (144, 84169), (145, 84190), (146, 84211), (148, 84226),

Gene: Jaygup_140 Start: 80832, Stop: 82571, Start Num: 4

Candidate Starts for Jaygup_140:

(Start: 4 @80832 has 178 MA's), (Start: 5 @80850 has 3 MA's), (20, 81036), (25, 81099), (27, 81123), (39, 81264), (44, 81306), (45, 81318), (46, 81333), (50, 81387), (51, 81414), (61, 81522), (62, 81528), (65, 81555), (74, 81690), (75, 81705), (78, 81729), (83, 81843), (88, 81948), (90, 81963), (91, 81969), (100, 82053), (107, 82131), (108, 82152), (109, 82161), (111, 82173), (116, 82212), (121, 82254), (123, 82275), (134, 82386), (135, 82395), (143, 82485), (144, 82488), (145, 82509), (146, 82530), (148, 82545),

Gene: JeanGrey_55 Start: 40230, Stop: 41975, Start Num: 1

Candidate Starts for JeanGrey_55:

(Start: 1 @40230 has 1 MA's), (19, 40437), (27, 40527), (48, 40752), (88, 41352), (92, 41376), (105, 41529), (109, 41565), (117, 41640), (129, 41754), (138, 41841),

Gene: Jedediah_143 Start: 81365, Stop: 83104, Start Num: 4

Candidate Starts for Jedediah_143:

(Start: 4 @81365 has 178 MA's), (Start: 5 @81383 has 3 MA's), (20, 81569), (25, 81632), (27, 81656), (39, 81797), (44, 81839), (45, 81851), (46, 81866), (50, 81920), (51, 81947), (61, 82055), (62, 82061), (65, 82088), (74, 82223), (75, 82238), (78, 82262), (83, 82376), (88, 82481), (90, 82496), (91, 82502), (100, 82586), (107, 82664), (108, 82685), (109, 82694), (111, 82706), (116, 82745), (121, 82787), (123, 82808), (134, 82919), (135, 82928), (143, 83018), (144, 83021), (145, 83042), (146, 83063), (148, 83078),

Gene: Jemmno_140 Start: 80812, Stop: 82551, Start Num: 4

Candidate Starts for Jemmno_140:

(Start: 4 @80812 has 178 MA's), (Start: 5 @80830 has 3 MA's), (20, 81016), (25, 81079), (27, 81103), (39, 81244), (44, 81286), (45, 81298), (46, 81313), (50, 81367), (51, 81394), (61, 81502), (62, 81508), (65, 81535), (74, 81670), (75, 81685), (78, 81709), (83, 81823), (88, 81928), (90, 81943), (91, 81949), (100, 82033), (107, 82111), (108, 82132), (109, 82141), (111, 82153), (116, 82192), (121, 82234), (123, 82255), (134, 82366), (135, 82375), (143, 82465), (144, 82468), (145, 82489), (146, 82510), (148, 82525),

Gene: Jessibeth14_139 Start: 81362, Stop: 83083, Start Num: 5

Candidate Starts for Jessibeth14_139:

(Start: 4 @81344 has 178 MA's), (Start: 5 @81362 has 3 MA's), (20, 81548), (25, 81611), (27, 81635), (39, 81776), (44, 81818), (45, 81830), (46, 81845), (50, 81899), (51, 81926), (62, 82040), (65, 82067), (74, 82202), (75, 82217), (78, 82241), (83, 82355), (88, 82460), (90, 82475), (91, 82481), (100, 82565), (107, 82643), (108, 82664), (109, 82673), (111, 82685), (116, 82724), (121, 82766), (123, 82787), (134, 82898), (135, 82907), (143, 82997), (144, 83000), (145, 83021), (146, 83042), (148, 83057),

Gene: Jezreel_140 Start: 81498, Stop: 83237, Start Num: 4

Candidate Starts for Jezreel_140:

(Start: 4 @81498 has 178 MA's), (Start: 5 @81516 has 3 MA's), (20, 81702), (25, 81765), (27, 81789), (39, 81930), (44, 81972), (45, 81984), (46, 81999), (50, 82053), (51, 82080), (62, 82194), (65, 82221), (74, 82356), (75, 82371), (78, 82395), (83, 82509), (88, 82614), (90, 82629), (91, 82635), (100, 82719), (107, 82797), (108, 82818), (109, 82827), (111, 82839), (116, 82878), (121, 82920), (123, 82941), (134, 83052), (135, 83061), (143, 83151), (144, 83154), (145, 83175), (146, 83196), (148, 83211),

Gene: JigglyPuff_148 Start: 83662, Stop: 85401, Start Num: 4

Candidate Starts for JigglyPuff_148:

(Start: 4 @83662 has 178 MA's), (Start: 5 @83680 has 3 MA's), (20, 83866), (25, 83929), (27, 83953), (39, 84094), (44, 84136), (45, 84148), (46, 84163), (50, 84217), (51, 84244), (62, 84358), (65, 84385), (74, 84520), (75, 84535), (78, 84559), (83, 84673), (88, 84778), (90, 84793), (91, 84799), (100, 84883), (107, 84961), (108, 84982), (109, 84991), (111, 85003), (116, 85042), (121, 85084), (123, 85105), (134, 85216), (135, 85225), (143, 85315), (144, 85318), (145, 85339), (146, 85360), (148, 85375),

Gene: JulietS_134 Start: 78699, Stop: 80438, Start Num: 4

Candidate Starts for JulietS_134:

(Start: 4 @78699 has 178 MA's), (Start: 5 @78717 has 3 MA's), (20, 78903), (25, 78966), (27, 78990), (39, 79131), (44, 79173), (45, 79185), (46, 79200), (50, 79254), (51, 79281), (61, 79389), (62, 79395), (65, 79422), (74, 79557), (75, 79572), (78, 79596), (83, 79710), (88, 79815), (90, 79830), (91, 79836), (100, 79920), (107, 79998), (108, 80019), (109, 80028), (111, 80040), (116, 80079), (121, 80121), (123, 80142), (134, 80253), (135, 80262), (143, 80352), (144, 80355), (145, 80376), (146, 80397), (148, 80412),

Gene: JustHall_138 Start: 81340, Stop: 83079, Start Num: 4

Candidate Starts for JustHall_138:

(Start: 4 @81340 has 178 MA's), (Start: 5 @81358 has 3 MA's), (20, 81544), (25, 81607), (27, 81631), (39, 81772), (44, 81814), (45, 81826), (46, 81841), (50, 81895), (51, 81922), (61, 82030), (62, 82036), (65, 82063), (74, 82198), (75, 82213), (78, 82237), (83, 82351), (88, 82456), (90, 82471), (91, 82477), (100, 82561), (107, 82639), (108, 82660), (109, 82669), (111, 82681), (116, 82720), (121, 82762), (123, 82783), (134, 82894), (135, 82903), (143, 82993), (144, 82996), (145, 83017), (146, 83038), (148, 83053),

Gene: Kamryn_140 Start: 82150, Stop: 83889, Start Num: 4

Candidate Starts for Kamryn_140:

(Start: 4 @82150 has 178 MA's), (Start: 5 @82168 has 3 MA's), (20, 82354), (25, 82417), (27, 82441), (39, 82582), (44, 82624), (45, 82636), (46, 82651), (50, 82705), (51, 82732), (62, 82846), (65, 82873), (74, 83008), (75, 83023), (78, 83047), (83, 83161), (88, 83266), (90, 83281), (91, 83287), (100, 83371), (107, 83449), (108, 83470), (109, 83479), (111, 83491), (116, 83530), (121, 83572), (123, 83593), (134, 83704), (135, 83713), (143, 83803), (144, 83806), (145, 83827), (146, 83848), (148, 83863),

Gene: Kboogie_144 Start: 80505, Stop: 82244, Start Num: 4

Candidate Starts for Kboogie_144:

(Start: 4 @80505 has 178 MA's), (Start: 5 @80523 has 3 MA's), (20, 80709), (25, 80772), (27, 80796), (39, 80937), (44, 80979), (45, 80991), (46, 81006), (50, 81060), (51, 81087), (62, 81201), (65, 81228), (74, 81363), (75, 81378), (78, 81402), (83, 81516), (88, 81621), (90, 81636), (91, 81642), (100, 81726), (107, 81804), (108, 81825), (109, 81834), (111, 81846), (116, 81885), (121, 81927), (123, 81948), (134, 82059), (135, 82068), (143, 82158), (144, 82161), (145, 82182), (146, 82203), (148, 82218),

Gene: Khaleesi_139 Start: 81447, Stop: 83186, Start Num: 4

Candidate Starts for Khaleesi_139:

(Start: 4 @81447 has 178 MA's), (Start: 5 @81465 has 3 MA's), (20, 81651), (25, 81714), (27, 81738), (39, 81879), (44, 81921), (45, 81933), (46, 81948), (50, 82002), (51, 82029), (62, 82143), (65, 82170), (74, 82305), (75, 82320), (78, 82344), (83, 82458), (88, 82563), (90, 82578), (91, 82584), (100, 82668), (107, 82746), (108, 82767), (109, 82776), (111, 82788), (116, 82827), (121, 82869), (123, 82890), (134, 83001), (135, 83010), (143, 83100), (144, 83103), (145, 83124), (146, 83145), (148, 83160),

Gene: Koguma_137 Start: 78982, Stop: 80721, Start Num: 4

Candidate Starts for Koguma_137:

(Start: 4 @78982 has 178 MA's), (Start: 5 @79000 has 3 MA's), (13, 79057), (20, 79186), (25, 79249), (27, 79273), (39, 79414), (44, 79456), (45, 79468), (46, 79483), (50, 79537), (51, 79564), (62, 79678),

(65, 79705), (74, 79840), (75, 79855), (78, 79879), (83, 79993), (88, 80098), (90, 80113), (91, 80119), (100, 80203), (107, 80281), (108, 80302), (109, 80311), (111, 80323), (116, 80362), (121, 80404), (123, 80425), (134, 80536), (135, 80545), (143, 80635), (144, 80638), (145, 80659), (146, 80680), (148, 80695),

Gene: LRRHood_133 Start: 80790, Stop: 82529, Start Num: 4

Candidate Starts for LRRHood_133:

(Start: 4 @80790 has 178 MA's), (Start: 5 @80808 has 3 MA's), (13, 80865), (20, 80994), (25, 81057), (27, 81081), (39, 81222), (44, 81264), (45, 81276), (46, 81291), (50, 81345), (51, 81372), (62, 81486), (65, 81513), (74, 81648), (75, 81663), (78, 81687), (83, 81801), (88, 81906), (90, 81921), (91, 81927), (100, 82011), (107, 82089), (108, 82110), (109, 82119), (111, 82131), (116, 82170), (121, 82212), (123, 82233), (134, 82344), (135, 82353), (143, 82443), (144, 82446), (145, 82467), (146, 82488), (148, 82503),

Gene: Labradorite_139 Start: 79519, Stop: 81258, Start Num: 4

Candidate Starts for Labradorite_139:

(Start: 4 @79519 has 178 MA's), (Start: 5 @79537 has 3 MA's), (20, 79723), (25, 79786), (27, 79810), (39, 79951), (44, 79993), (45, 80005), (46, 80020), (50, 80074), (51, 80101), (62, 80215), (65, 80242), (74, 80377), (75, 80392), (78, 80416), (83, 80530), (88, 80635), (89, 80641), (90, 80650), (91, 80656), (100, 80740), (107, 80818), (108, 80839), (109, 80848), (111, 80860), (116, 80899), (121, 80941), (123, 80962), (134, 81073), (135, 81082), (143, 81172), (144, 81175), (145, 81196), (146, 81217), (148, 81232),

Gene: Latch_141 Start: 80555, Stop: 82294, Start Num: 4

Candidate Starts for Latch_141:

(Start: 4 @80555 has 178 MA's), (Start: 5 @80573 has 3 MA's), (20, 80759), (25, 80822), (27, 80846), (39, 80987), (44, 81029), (45, 81041), (46, 81056), (50, 81110), (51, 81137), (62, 81251), (65, 81278), (74, 81413), (75, 81428), (78, 81452), (83, 81566), (88, 81671), (90, 81686), (91, 81692), (100, 81776), (107, 81854), (108, 81875), (109, 81884), (111, 81896), (116, 81935), (121, 81977), (123, 81998), (134, 82109), (135, 82118), (143, 82208), (144, 82211), (145, 82232), (146, 82253), (148, 82268),

Gene: Lee7_138 Start: 82072, Stop: 83811, Start Num: 4

Candidate Starts for Lee7_138:

(Start: 4 @82072 has 178 MA's), (Start: 5 @82090 has 3 MA's), (13, 82147), (20, 82276), (25, 82339), (27, 82363), (39, 82504), (44, 82546), (45, 82558), (46, 82573), (50, 82627), (51, 82654), (62, 82768), (65, 82795), (74, 82930), (75, 82945), (78, 82969), (83, 83083), (88, 83188), (90, 83203), (91, 83209), (100, 83293), (107, 83371), (108, 83392), (109, 83401), (111, 83413), (116, 83452), (121, 83494), (123, 83515), (134, 83626), (135, 83635), (143, 83725), (144, 83728), (145, 83749), (146, 83770), (148, 83785),

Gene: Lethe_138 Start: 81509, Stop: 83248, Start Num: 4

Candidate Starts for Lethe_138:

(Start: 4 @81509 has 178 MA's), (Start: 5 @81527 has 3 MA's), (20, 81713), (25, 81776), (27, 81800), (39, 81941), (44, 81983), (45, 81995), (46, 82010), (50, 82064), (51, 82091), (62, 82205), (65, 82232), (74, 82367), (75, 82382), (78, 82406), (83, 82520), (88, 82625), (90, 82640), (91, 82646), (100, 82730), (107, 82808), (108, 82829), (109, 82838), (111, 82850), (116, 82889), (121, 82931), (123, 82952), (134, 83063), (135, 83072), (143, 83162), (144, 83165), (145, 83186), (146, 83207), (148, 83222),

Gene: LifeSavor_138 Start: 80764, Stop: 82503, Start Num: 4

Candidate Starts for LifeSavor_138:

(Start: 4 @80764 has 178 MA's), (Start: 5 @80782 has 3 MA's), (20, 80968), (25, 81031), (27, 81055), (39, 81196), (44, 81238), (45, 81250), (46, 81265), (50, 81319), (51, 81346), (61, 81454), (62, 81460), (65, 81487), (74, 81622), (75, 81637), (78, 81661), (83, 81775), (88, 81880), (90, 81895), (91, 81901),

(100, 81985), (107, 82063), (108, 82084), (109, 82093), (111, 82105), (116, 82144), (121, 82186), (123, 82207), (134, 82318), (135, 82327), (143, 82417), (144, 82420), (145, 82441), (146, 82462), (148, 82477),

Gene: LinStu_138 Start: 81399, Stop: 83138, Start Num: 4

Candidate Starts for LinStu_138:

(Start: 4 @81399 has 178 MA's), (Start: 5 @81417 has 3 MA's), (13, 81474), (20, 81603), (25, 81666), (27, 81690), (39, 81831), (44, 81873), (45, 81885), (46, 81900), (50, 81954), (51, 81981), (62, 82095), (65, 82122), (74, 82257), (75, 82272), (78, 82296), (83, 82410), (88, 82515), (90, 82530), (91, 82536), (100, 82620), (107, 82698), (108, 82719), (109, 82728), (111, 82740), (116, 82779), (121, 82821), (123, 82842), (134, 82953), (135, 82962), (143, 83052), (144, 83055), (145, 83076), (146, 83097), (148, 83112),

Gene: Littleton_140 Start: 80884, Stop: 82623, Start Num: 4

Candidate Starts for Littleton_140:

(Start: 4 @80884 has 178 MA's), (Start: 5 @80902 has 3 MA's), (20, 81088), (25, 81151), (27, 81175), (39, 81316), (44, 81358), (45, 81370), (46, 81385), (50, 81439), (51, 81466), (62, 81580), (65, 81607), (74, 81742), (75, 81757), (78, 81781), (83, 81895), (88, 82000), (90, 82015), (91, 82021), (100, 82105), (107, 82183), (108, 82204), (109, 82213), (111, 82225), (116, 82264), (121, 82306), (123, 82327), (134, 82438), (135, 82447), (143, 82537), (144, 82540), (145, 82561), (146, 82582), (148, 82597),

Gene: Loanshark_139 Start: 81415, Stop: 83154, Start Num: 4

Candidate Starts for Loanshark_139:

(Start: 4 @81415 has 178 MA's), (Start: 5 @81433 has 3 MA's), (13, 81490), (20, 81619), (25, 81682), (27, 81706), (39, 81847), (44, 81889), (45, 81901), (46, 81916), (50, 81970), (51, 81997), (62, 82111), (65, 82138), (74, 82273), (75, 82288), (78, 82312), (83, 82426), (88, 82531), (90, 82546), (91, 82552), (100, 82636), (107, 82714), (108, 82735), (109, 82744), (111, 82756), (116, 82795), (121, 82837), (123, 82858), (134, 82969), (135, 82978), (143, 83068), (144, 83071), (145, 83092), (146, 83113), (148, 83128),

Gene: LolaVinca_140 Start: 81758, Stop: 83497, Start Num: 4

Candidate Starts for LolaVinca_140:

(Start: 4 @81758 has 178 MA's), (Start: 5 @81776 has 3 MA's), (20, 81962), (25, 82025), (27, 82049), (39, 82190), (44, 82232), (45, 82244), (46, 82259), (50, 82313), (51, 82340), (62, 82454), (65, 82481), (74, 82616), (75, 82631), (78, 82655), (83, 82769), (88, 82874), (90, 82889), (91, 82895), (100, 82979), (107, 83057), (108, 83078), (109, 83087), (111, 83099), (116, 83138), (121, 83180), (123, 83201), (134, 83312), (135, 83321), (143, 83411), (144, 83414), (145, 83435), (146, 83456), (148, 83471),

Gene: LookingGlass_140 Start: 81583, Stop: 83322, Start Num: 4

Candidate Starts for LookingGlass_140:

(Start: 4 @81583 has 178 MA's), (Start: 5 @81601 has 3 MA's), (20, 81787), (25, 81850), (27, 81874), (39, 82015), (44, 82057), (45, 82069), (46, 82084), (50, 82138), (51, 82165), (62, 82279), (65, 82306), (74, 82441), (75, 82456), (78, 82480), (83, 82594), (88, 82699), (90, 82714), (91, 82720), (100, 82804), (107, 82882), (108, 82903), (109, 82912), (111, 82924), (116, 82963), (121, 83005), (123, 83026), (134, 83137), (135, 83146), (143, 83236), (144, 83239), (145, 83260), (146, 83281), (148, 83296),

Gene: LordLeafolot_144 Start: 82724, Stop: 84463, Start Num: 4

Candidate Starts for LordLeafolot_144:

(Start: 4 @82724 has 178 MA's), (Start: 5 @82742 has 3 MA's), (20, 82928), (25, 82991), (27, 83015), (39, 83156), (44, 83198), (45, 83210), (46, 83225), (50, 83279), (51, 83306), (62, 83420), (65, 83447), (74, 83582), (75, 83597), (78, 83621), (83, 83735), (88, 83840), (89, 83846), (90, 83855), (91, 83861), (100, 83945), (107, 84023), (108, 84044), (109, 84053), (111, 84065), (116, 84104), (121, 84146), (123, 84167), (134, 84278), (135, 84287), (143, 84377), (144, 84380), (145, 84401), (146, 84422),

(148, 84437),

Gene: Lukilu_130 Start: 81800, Stop: 83539, Start Num: 4

Candidate Starts for Lukilu_130:

(Start: 4 @81800 has 178 MA's), (Start: 5 @81818 has 3 MA's), (13, 81875), (20, 82004), (25, 82067), (27, 82091), (39, 82232), (44, 82274), (45, 82286), (46, 82301), (50, 82355), (51, 82382), (62, 82496), (65, 82523), (74, 82658), (75, 82673), (78, 82697), (83, 82811), (88, 82916), (90, 82931), (91, 82937), (100, 83021), (107, 83099), (108, 83120), (109, 83129), (111, 83141), (116, 83180), (121, 83222), (123, 83243), (134, 83354), (135, 83363), (143, 83453), (144, 83456), (145, 83477), (146, 83498), (148, 83513),

Gene: Lunareta_139 Start: 82680, Stop: 84419, Start Num: 4

Candidate Starts for Lunareta_139:

(Start: 4 @82680 has 178 MA's), (Start: 5 @82698 has 3 MA's), (20, 82884), (25, 82947), (27, 82971), (39, 83112), (44, 83154), (45, 83166), (46, 83181), (50, 83235), (51, 83262), (61, 83370), (62, 83376), (65, 83403), (74, 83538), (75, 83553), (78, 83577), (83, 83691), (88, 83796), (90, 83811), (91, 83817), (100, 83901), (107, 83979), (108, 84000), (109, 84009), (111, 84021), (116, 84060), (121, 84102), (123, 84123), (134, 84234), (135, 84243), (143, 84333), (144, 84336), (145, 84357), (146, 84378), (148, 84393),

Gene: Maby2021_140 Start: 81532, Stop: 83271, Start Num: 4

Candidate Starts for Maby2021_140:

(Start: 4 @81532 has 178 MA's), (Start: 5 @81550 has 3 MA's), (13, 81607), (20, 81736), (25, 81799), (27, 81823), (39, 81964), (44, 82006), (45, 82018), (46, 82033), (50, 82087), (51, 82114), (62, 82228), (65, 82255), (74, 82390), (75, 82405), (78, 82429), (83, 82543), (88, 82648), (90, 82663), (91, 82669), (100, 82753), (107, 82831), (108, 82852), (109, 82861), (111, 82873), (116, 82912), (121, 82954), (123, 82975), (134, 83086), (135, 83095), (143, 83185), (144, 83188), (145, 83209), (146, 83230), (148, 83245),

Gene: Mangeria_140 Start: 81601, Stop: 83340, Start Num: 4

Candidate Starts for Mangeria_140:

(Start: 4 @81601 has 178 MA's), (Start: 5 @81619 has 3 MA's), (20, 81805), (25, 81868), (27, 81892), (39, 82033), (44, 82075), (45, 82087), (46, 82102), (50, 82156), (51, 82183), (61, 82291), (62, 82297), (65, 82324), (74, 82459), (75, 82474), (78, 82498), (83, 82612), (88, 82717), (90, 82732), (91, 82738), (100, 82822), (107, 82900), (108, 82921), (109, 82930), (111, 82942), (116, 82981), (121, 83023), (123, 83044), (134, 83155), (135, 83164), (143, 83254), (144, 83257), (145, 83278), (146, 83299), (148, 83314),

Gene: Matsumoto_138 Start: 80392, Stop: 82131, Start Num: 4

Candidate Starts for Matsumoto_138:

(Start: 4 @80392 has 178 MA's), (Start: 5 @80410 has 3 MA's), (20, 80596), (25, 80659), (27, 80683), (39, 80824), (44, 80866), (45, 80878), (46, 80893), (50, 80947), (51, 80974), (62, 81088), (65, 81115), (74, 81250), (75, 81265), (78, 81289), (83, 81403), (88, 81508), (90, 81523), (91, 81529), (100, 81613), (107, 81691), (108, 81712), (109, 81721), (111, 81733), (116, 81772), (121, 81814), (123, 81835), (134, 81946), (135, 81955), (143, 82045), (144, 82048), (145, 82069), (146, 82090), (148, 82105),

Gene: Maturis_138 Start: 81176, Stop: 82915, Start Num: 4

Candidate Starts for Maturis_138:

(Start: 4 @81176 has 178 MA's), (Start: 5 @81194 has 3 MA's), (20, 81380), (25, 81443), (27, 81467), (39, 81608), (44, 81650), (45, 81662), (46, 81677), (50, 81731), (51, 81758), (61, 81866), (62, 81872), (65, 81899), (74, 82034), (75, 82049), (78, 82073), (83, 82187), (88, 82292), (90, 82307), (91, 82313), (100, 82397), (107, 82475), (108, 82496), (109, 82505), (111, 82517), (116, 82556), (121, 82598), (123, 82619), (134, 82730), (135, 82739), (143, 82829), (144, 82832), (145, 82853), (146, 82874),

(148, 82889),

Gene: McGee_142 Start: 80146, Stop: 81885, Start Num: 4

Candidate Starts for McGee_142:

(Start: 4 @80146 has 178 MA's), (Start: 5 @80164 has 3 MA's), (20, 80350), (25, 80413), (27, 80437), (39, 80578), (44, 80620), (45, 80632), (46, 80647), (50, 80701), (51, 80728), (62, 80842), (65, 80869), (74, 81004), (75, 81019), (78, 81043), (83, 81157), (88, 81262), (90, 81277), (91, 81283), (100, 81367), (107, 81445), (108, 81466), (109, 81475), (111, 81487), (116, 81526), (121, 81568), (123, 81589), (134, 81700), (135, 81709), (143, 81799), (144, 81802), (145, 81823), (146, 81844), (148, 81859),

Gene: McWolfish_138 Start: 81320, Stop: 83059, Start Num: 4

Candidate Starts for McWolfish_138:

(Start: 4 @81320 has 178 MA's), (Start: 5 @81338 has 3 MA's), (20, 81524), (25, 81587), (27, 81611), (39, 81752), (44, 81794), (45, 81806), (46, 81821), (50, 81875), (51, 81902), (62, 82016), (65, 82043), (74, 82178), (75, 82193), (78, 82217), (83, 82331), (88, 82436), (90, 82451), (91, 82457), (100, 82541), (107, 82619), (108, 82640), (109, 82649), (111, 82661), (116, 82700), (121, 82742), (123, 82763), (134, 82874), (135, 82883), (143, 82973), (144, 82976), (145, 82997), (146, 83018), (148, 83033),

Gene: Megamind_139 Start: 81205, Stop: 82944, Start Num: 4

Candidate Starts for Megamind_139:

(Start: 4 @81205 has 178 MA's), (Start: 5 @81223 has 3 MA's), (13, 81280), (20, 81409), (25, 81472), (27, 81496), (39, 81637), (44, 81679), (45, 81691), (46, 81706), (50, 81760), (51, 81787), (62, 81901), (65, 81928), (74, 82063), (75, 82078), (78, 82102), (83, 82216), (88, 82321), (90, 82336), (91, 82342), (100, 82426), (107, 82504), (108, 82525), (109, 82534), (111, 82546), (116, 82585), (121, 82627), (123, 82648), (134, 82759), (135, 82768), (143, 82858), (144, 82861), (145, 82882), (146, 82903), (148, 82918),

Gene: Melpomini_134 Start: 78670, Stop: 80409, Start Num: 4

Candidate Starts for Melpomini_134:

(Start: 4 @78670 has 178 MA's), (Start: 5 @78688 has 3 MA's), (20, 78874), (25, 78937), (27, 78961), (39, 79102), (44, 79144), (45, 79156), (46, 79171), (50, 79225), (51, 79252), (61, 79360), (62, 79366), (65, 79393), (74, 79528), (75, 79543), (78, 79567), (83, 79681), (88, 79786), (90, 79801), (91, 79807), (100, 79891), (107, 79969), (108, 79990), (109, 79999), (111, 80011), (116, 80050), (121, 80092), (123, 80113), (134, 80224), (135, 80233), (143, 80323), (144, 80326), (145, 80347), (146, 80368), (148, 80383),

Gene: MikeLiesIn_141 Start: 81561, Stop: 83300, Start Num: 4

Candidate Starts for MikeLiesIn_141:

(Start: 4 @81561 has 178 MA's), (Start: 5 @81579 has 3 MA's), (20, 81765), (25, 81828), (27, 81852), (39, 81993), (44, 82035), (45, 82047), (46, 82062), (50, 82116), (51, 82143), (62, 82257), (65, 82284), (74, 82419), (75, 82434), (78, 82458), (83, 82572), (88, 82677), (90, 82692), (91, 82698), (100, 82782), (107, 82860), (108, 82881), (109, 82890), (111, 82902), (116, 82941), (121, 82983), (123, 83004), (134, 83115), (135, 83124), (143, 83214), (144, 83217), (145, 83238), (146, 83259), (148, 83274),

Gene: Mikro_137 Start: 82774, Stop: 84513, Start Num: 4

Candidate Starts for Mikro_137:

(Start: 4 @82774 has 178 MA's), (Start: 5 @82792 has 3 MA's), (20, 82978), (25, 83041), (27, 83065), (39, 83206), (44, 83248), (45, 83260), (46, 83275), (50, 83329), (51, 83356), (62, 83470), (65, 83497), (74, 83632), (75, 83647), (78, 83671), (83, 83785), (88, 83890), (90, 83905), (91, 83911), (100, 83995), (107, 84073), (108, 84094), (109, 84103), (111, 84115), (116, 84154), (121, 84196), (123, 84217), (134, 84328), (135, 84337), (143, 84427), (144, 84430), (145, 84451), (146, 84472), (148, 84487),

Gene: MoMoMixon_140 Start: 81037, Stop: 82776, Start Num: 4

Candidate Starts for MoMoMixon_140:

(Start: 4 @81037 has 178 MA's), (Start: 5 @81055 has 3 MA's), (20, 81241), (25, 81304), (27, 81328), (39, 81469), (44, 81511), (45, 81523), (46, 81538), (50, 81592), (51, 81619), (62, 81733), (65, 81760), (74, 81895), (75, 81910), (78, 81934), (83, 82048), (88, 82153), (90, 82168), (91, 82174), (100, 82258), (107, 82336), (108, 82357), (109, 82366), (111, 82378), (116, 82417), (121, 82459), (123, 82480), (134, 82591), (135, 82600), (143, 82690), (144, 82693), (145, 82714), (146, 82735), (148, 82750),

Gene: Momo_140 Start: 80555, Stop: 82294, Start Num: 4

Candidate Starts for Momo_140:

(Start: 4 @80555 has 178 MA's), (Start: 5 @80573 has 3 MA's), (20, 80759), (25, 80822), (27, 80846), (39, 80987), (44, 81029), (45, 81041), (46, 81056), (50, 81110), (51, 81137), (62, 81251), (65, 81278), (74, 81413), (75, 81428), (78, 81452), (83, 81566), (88, 81671), (90, 81686), (91, 81692), (100, 81776), (107, 81854), (108, 81875), (109, 81884), (111, 81896), (116, 81935), (121, 81977), (123, 81998), (134, 82109), (135, 82118), (143, 82208), (144, 82211), (145, 82232), (146, 82253), (148, 82268),

Gene: Montpel_139 Start: 82678, Stop: 84417, Start Num: 4

Candidate Starts for Montpel_139:

(Start: 4 @82678 has 178 MA's), (Start: 5 @82696 has 3 MA's), (20, 82882), (25, 82945), (27, 82969), (39, 83110), (44, 83152), (45, 83164), (46, 83179), (50, 83233), (51, 83260), (61, 83368), (62, 83374), (65, 83401), (74, 83536), (75, 83551), (78, 83575), (83, 83689), (88, 83794), (90, 83809), (91, 83815), (100, 83899), (107, 83977), (108, 83998), (109, 84007), (111, 84019), (116, 84058), (121, 84100), (123, 84121), (134, 84232), (135, 84241), (143, 84331), (144, 84334), (145, 84355), (146, 84376), (148, 84391),

Gene: Morizzled23_141 Start: 80928, Stop: 82649, Start Num: 5

Candidate Starts for Morizzled23_141:

(Start: 4 @80910 has 178 MA's), (Start: 5 @80928 has 3 MA's), (20, 81114), (25, 81177), (27, 81201), (39, 81342), (44, 81384), (45, 81396), (46, 81411), (50, 81465), (51, 81492), (62, 81606), (65, 81633), (74, 81768), (75, 81783), (78, 81807), (83, 81921), (88, 82026), (90, 82041), (91, 82047), (100, 82131), (107, 82209), (108, 82230), (109, 82239), (111, 82251), (116, 82290), (121, 82332), (123, 82353), (134, 82464), (135, 82473), (143, 82563), (144, 82566), (145, 82587), (146, 82608), (148, 82623),

Gene: Myrna_136 Start: 82031, Stop: 83773, Start Num: 3

Candidate Starts for Myrna_136:

(Start: 3 @82031 has 11 MA's), (7, 82064), (10, 82082), (11, 82097), (Start: 16 @82142 has 1 MA's), (21, 82286), (30, 82412), (35, 82445), (39, 82466), (41, 82484), (51, 82616), (65, 82757), (69, 82799), (74, 82892), (75, 82907), (76, 82910), (77, 82925), (88, 83150), (90, 83165), (97, 83225), (114, 83408), (116, 83414), (123, 83477), (134, 83588), (136, 83606), (141, 83654), (142, 83678), (147, 83738), (150, 83753),

Gene: Naija_140 Start: 80555, Stop: 82294, Start Num: 4

Candidate Starts for Naija_140:

(Start: 4 @80555 has 178 MA's), (Start: 5 @80573 has 3 MA's), (20, 80759), (25, 80822), (27, 80846), (39, 80987), (44, 81029), (45, 81041), (46, 81056), (50, 81110), (51, 81137), (62, 81251), (65, 81278), (74, 81413), (75, 81428), (78, 81452), (83, 81566), (88, 81671), (90, 81686), (91, 81692), (100, 81776), (107, 81854), (108, 81875), (109, 81884), (111, 81896), (116, 81935), (121, 81977), (123, 81998), (134, 82109), (135, 82118), (143, 82208), (144, 82211), (145, 82232), (146, 82253), (148, 82268),

Gene: Napoleon13_136 Start: 79108, Stop: 80847, Start Num: 4

Candidate Starts for Napoleon13_136:

(Start: 4 @79108 has 178 MA's), (Start: 5 @79126 has 3 MA's), (20, 79312), (25, 79375), (27, 79399), (39, 79540), (44, 79582), (45, 79594), (46, 79609), (50, 79663), (51, 79690), (61, 79798), (62, 79804), (65, 79831), (74, 79966), (75, 79981), (78, 80005), (83, 80119), (88, 80224), (90, 80239), (91, 80245),

(100, 80329), (107, 80407), (108, 80428), (109, 80437), (111, 80449), (116, 80488), (121, 80530), (123, 80551), (134, 80662), (135, 80671), (143, 80761), (144, 80764), (145, 80785), (146, 80806), (148, 80821),

Gene: Nappy_142 Start: 82471, Stop: 84210, Start Num: 4

Candidate Starts for Nappy_142:

(Start: 4 @82471 has 178 MA's), (Start: 5 @82489 has 3 MA's), (20, 82675), (25, 82738), (27, 82762), (39, 82903), (44, 82945), (45, 82957), (46, 82972), (50, 83026), (51, 83053), (61, 83161), (62, 83167), (65, 83194), (74, 83329), (75, 83344), (78, 83368), (83, 83482), (88, 83587), (90, 83602), (91, 83608), (100, 83692), (107, 83770), (108, 83791), (109, 83800), (111, 83812), (116, 83851), (121, 83893), (123, 83914), (134, 84025), (135, 84034), (143, 84124), (144, 84127), (145, 84148), (146, 84169), (148, 84184),

Gene: Naval22_148 Start: 83004, Stop: 84743, Start Num: 4

Candidate Starts for Naval22_148:

(Start: 4 @83004 has 178 MA's), (Start: 5 @83022 has 3 MA's), (20, 83208), (25, 83271), (27, 83295), (39, 83436), (44, 83478), (45, 83490), (46, 83505), (50, 83559), (51, 83586), (62, 83700), (65, 83727), (74, 83862), (75, 83877), (78, 83901), (83, 84015), (88, 84120), (90, 84135), (91, 84141), (100, 84225), (107, 84303), (108, 84324), (109, 84333), (111, 84345), (116, 84384), (121, 84426), (123, 84447), (134, 84558), (135, 84567), (143, 84657), (144, 84660), (145, 84681), (146, 84702), (148, 84717),

Gene: NedWong_141 Start: 81539, Stop: 83278, Start Num: 4

Candidate Starts for NedWong_141:

(Start: 4 @81539 has 178 MA's), (Start: 5 @81557 has 3 MA's), (13, 81614), (20, 81743), (25, 81806), (27, 81830), (39, 81971), (44, 82013), (45, 82025), (46, 82040), (50, 82094), (51, 82121), (62, 82235), (65, 82262), (74, 82397), (75, 82412), (78, 82436), (83, 82550), (88, 82655), (90, 82670), (91, 82676), (100, 82760), (107, 82838), (108, 82859), (109, 82868), (111, 82880), (116, 82919), (121, 82961), (123, 82982), (134, 83093), (135, 83102), (143, 83192), (144, 83195), (145, 83216), (146, 83237), (148, 83252),

Gene: Ngannou_137 Start: 79537, Stop: 81276, Start Num: 4

Candidate Starts for Ngannou_137:

(Start: 4 @79537 has 178 MA's), (Start: 5 @79555 has 3 MA's), (20, 79741), (25, 79804), (27, 79828), (39, 79969), (44, 80011), (45, 80023), (46, 80038), (50, 80092), (51, 80119), (62, 80233), (65, 80260), (74, 80395), (75, 80410), (78, 80434), (83, 80548), (88, 80653), (90, 80668), (91, 80674), (100, 80758), (107, 80836), (108, 80857), (109, 80866), (111, 80878), (116, 80917), (121, 80959), (123, 80980), (134, 81091), (135, 81100), (143, 81190), (144, 81193), (145, 81214), (146, 81235), (148, 81250),

Gene: Nidhogg_142 Start: 81761, Stop: 83500, Start Num: 4

Candidate Starts for Nidhogg_142:

(Start: 4 @81761 has 178 MA's), (Start: 5 @81779 has 3 MA's), (20, 81965), (25, 82028), (27, 82052), (39, 82193), (44, 82235), (45, 82247), (46, 82262), (50, 82316), (51, 82343), (62, 82457), (65, 82484), (74, 82619), (75, 82634), (78, 82658), (83, 82772), (88, 82877), (90, 82892), (91, 82898), (100, 82982), (107, 83060), (108, 83081), (109, 83090), (111, 83102), (116, 83141), (121, 83183), (123, 83204), (134, 83315), (135, 83324), (143, 83414), (144, 83417), (145, 83438), (146, 83459), (148, 83474),

Gene: NoodleTree_147 Start: 81631, Stop: 83370, Start Num: 4

Candidate Starts for NoodleTree_147:

(Start: 4 @81631 has 178 MA's), (Start: 5 @81649 has 3 MA's), (20, 81835), (25, 81898), (27, 81922), (39, 82063), (44, 82105), (45, 82117), (46, 82132), (50, 82186), (51, 82213), (62, 82327), (65, 82354), (74, 82489), (75, 82504), (78, 82528), (83, 82642), (88, 82747), (90, 82762), (91, 82768), (100, 82852), (107, 82930), (108, 82951), (109, 82960), (111, 82972), (116, 83011), (121, 83053), (123, 83074), (134, 83185), (135, 83194), (143, 83284), (144, 83287), (145, 83308), (146, 83329), (148, 83344),

Gene: Norm_141 Start: 82233, Stop: 83972, Start Num: 4

Candidate Starts for Norm_141:

(Start: 4 @82233 has 178 MA's), (Start: 5 @82251 has 3 MA's), (20, 82437), (25, 82500), (27, 82524), (39, 82665), (44, 82707), (45, 82719), (46, 82734), (50, 82788), (51, 82815), (61, 82923), (62, 82929), (65, 82956), (74, 83091), (75, 83106), (78, 83130), (83, 83244), (88, 83349), (90, 83364), (91, 83370), (100, 83454), (107, 83532), (108, 83553), (109, 83562), (111, 83574), (116, 83613), (121, 83655), (123, 83676), (134, 83787), (135, 83796), (143, 83886), (144, 83889), (145, 83910), (146, 83931), (148, 83946),

Gene: NuevoMundo_145 Start: 83813, Stop: 85552, Start Num: 4

Candidate Starts for NuevoMundo_145:

(Start: 4 @83813 has 178 MA's), (Start: 5 @83831 has 3 MA's), (20, 84017), (25, 84080), (27, 84104), (39, 84245), (44, 84287), (45, 84299), (46, 84314), (50, 84368), (51, 84395), (61, 84503), (62, 84509), (65, 84536), (74, 84671), (75, 84686), (78, 84710), (83, 84824), (88, 84929), (90, 84944), (91, 84950), (100, 85034), (107, 85112), (108, 85133), (109, 85142), (111, 85154), (116, 85193), (121, 85235), (123, 85256), (134, 85367), (135, 85376), (143, 85466), (144, 85469), (145, 85490), (146, 85511), (148, 85526),

Gene: OrediggerDelux_138 Start: 82069, Stop: 83808, Start Num: 4

Candidate Starts for OrediggerDelux_138:

(Start: 4 @82069 has 178 MA's), (Start: 5 @82087 has 3 MA's), (13, 82144), (20, 82273), (25, 82336), (27, 82360), (39, 82501), (44, 82543), (45, 82555), (46, 82570), (50, 82624), (51, 82651), (62, 82765), (65, 82792), (74, 82927), (75, 82942), (78, 82966), (83, 83080), (88, 83185), (90, 83200), (91, 83206), (100, 83290), (107, 83368), (108, 83389), (109, 83398), (111, 83410), (116, 83449), (121, 83491), (123, 83512), (134, 83623), (135, 83632), (143, 83722), (144, 83725), (145, 83746), (146, 83767), (148, 83782),

Gene: ParkTD_141 Start: 81544, Stop: 83283, Start Num: 4

Candidate Starts for ParkTD_141:

(Start: 4 @81544 has 178 MA's), (Start: 5 @81562 has 3 MA's), (20, 81748), (25, 81811), (27, 81835), (39, 81976), (44, 82018), (45, 82030), (46, 82045), (50, 82099), (51, 82126), (62, 82240), (65, 82267), (74, 82402), (75, 82417), (78, 82441), (83, 82555), (88, 82660), (90, 82675), (91, 82681), (100, 82765), (107, 82843), (108, 82864), (109, 82873), (111, 82885), (116, 82924), (121, 82966), (123, 82987), (134, 83098), (135, 83107), (143, 83197), (144, 83200), (145, 83221), (146, 83242), (148, 83257),

Gene: Patter_141 Start: 80572, Stop: 82311, Start Num: 4

Candidate Starts for Patter_141:

(Start: 4 @80572 has 178 MA's), (Start: 5 @80590 has 3 MA's), (20, 80776), (25, 80839), (27, 80863), (39, 81004), (44, 81046), (45, 81058), (46, 81073), (50, 81127), (51, 81154), (62, 81268), (65, 81295), (74, 81430), (75, 81445), (78, 81469), (83, 81583), (88, 81688), (90, 81703), (91, 81709), (100, 81793), (107, 81871), (108, 81892), (109, 81901), (111, 81913), (116, 81952), (121, 81994), (123, 82015), (134, 82126), (135, 82135), (143, 82225), (144, 82228), (145, 82249), (146, 82270), (148, 82285),

Gene: Phabba_141 Start: 81027, Stop: 82769, Start Num: 3

Candidate Starts for Phabba_141:

(Start: 3 @81027 has 11 MA's), (7, 81060), (10, 81078), (Start: 16 @81138 has 1 MA's), (21, 81282), (25, 81297), (30, 81408), (39, 81462), (41, 81480), (49, 81561), (51, 81612), (65, 81753), (69, 81795), (74, 81888), (75, 81903), (76, 81906), (77, 81921), (87, 82107), (88, 82146), (90, 82161), (97, 82221), (133, 82575), (134, 82584), (136, 82602), (141, 82650), (142, 82674), (147, 82734),

Gene: PharkleMinkus_144 Start: 81872, Stop: 83611, Start Num: 4

Candidate Starts for PharkleMinkus_144:

(Start: 4 @81872 has 178 MA's), (Start: 5 @81890 has 3 MA's), (20, 82076), (25, 82139), (27, 82163), (39, 82304), (44, 82346), (45, 82358), (46, 82373), (50, 82427), (51, 82454), (62, 82568), (65, 82595), (74, 82730), (75, 82745), (78, 82769), (83, 82883), (88, 82988), (89, 82994), (90, 83003), (91, 83009), (100, 83093), (107, 83171), (108, 83192), (109, 83201), (111, 83213), (116, 83252), (121, 83294), (123, 83315), (134, 83426), (135, 83435), (143, 83525), (144, 83528), (145, 83549), (146, 83570), (148, 83585),

Gene: Phlegm_144 Start: 80555, Stop: 82294, Start Num: 4

Candidate Starts for Phlegm_144:

(Start: 4 @80555 has 178 MA's), (Start: 5 @80573 has 3 MA's), (20, 80759), (25, 80822), (27, 80846), (39, 80987), (44, 81029), (45, 81041), (46, 81056), (50, 81110), (51, 81137), (62, 81251), (65, 81278), (74, 81413), (75, 81428), (78, 81452), (83, 81566), (88, 81671), (90, 81686), (91, 81692), (100, 81776), (107, 81854), (108, 81875), (109, 81884), (111, 81896), (116, 81935), (121, 81977), (123, 81998), (134, 82109), (135, 82118), (143, 82208), (144, 82211), (145, 82232), (146, 82253), (148, 82268),

Gene: Phox_137 Start: 81824, Stop: 83563, Start Num: 4

Candidate Starts for Phox_137:

(Start: 4 @81824 has 178 MA's), (Start: 5 @81842 has 3 MA's), (20, 82028), (25, 82091), (27, 82115), (39, 82256), (44, 82298), (45, 82310), (46, 82325), (50, 82379), (51, 82406), (62, 82520), (65, 82547), (74, 82682), (75, 82697), (78, 82721), (83, 82835), (88, 82940), (90, 82955), (91, 82961), (100, 83045), (107, 83123), (108, 83144), (109, 83153), (111, 83165), (116, 83204), (121, 83246), (123, 83267), (134, 83378), (135, 83387), (143, 83477), (144, 83480), (145, 83501), (146, 83522), (148, 83537),

Gene: Phrappuccino_85 Start: 62799, Stop: 64553, Start Num: 3

Candidate Starts for Phrappuccino_85:

(Start: 3 @62799 has 11 MA's), (17, 62952), (30, 63192), (31, 63195), (34, 63219), (35, 63225), (36, 63231), (44, 63288), (57, 63471), (68, 63570), (72, 63660), (74, 63672), (80, 63780), (86, 63885), (88, 63930), (90, 63945), (91, 63951), (92, 63954), (95, 63978), (96, 63990), (97, 64005), (99, 64020), (111, 64155), (112, 64158), (115, 64191), (116, 64194), (124, 64260), (129, 64332), (132, 64356), (134, 64368), (135, 64377), (147, 64518),

Gene: Phusco_140 Start: 80831, Stop: 82570, Start Num: 4

Candidate Starts for Phusco_140:

(Start: 4 @80831 has 178 MA's), (Start: 5 @80849 has 3 MA's), (20, 81035), (25, 81098), (27, 81122), (39, 81263), (44, 81305), (45, 81317), (46, 81332), (50, 81386), (51, 81413), (62, 81527), (65, 81554), (74, 81689), (75, 81704), (78, 81728), (83, 81842), (88, 81947), (90, 81962), (91, 81968), (100, 82052), (107, 82130), (108, 82151), (109, 82160), (111, 82172), (116, 82211), (121, 82253), (123, 82274), (134, 82385), (135, 82394), (143, 82484), (144, 82487), (145, 82508), (146, 82529), (148, 82544),

Gene: Pier_144 Start: 83821, Stop: 85560, Start Num: 4

Candidate Starts for Pier_144:

(Start: 4 @83821 has 178 MA's), (Start: 5 @83839 has 3 MA's), (20, 84025), (25, 84088), (27, 84112), (39, 84253), (44, 84295), (45, 84307), (46, 84322), (50, 84376), (51, 84403), (62, 84517), (65, 84544), (74, 84679), (75, 84694), (78, 84718), (83, 84832), (88, 84937), (90, 84952), (91, 84958), (100, 85042), (107, 85120), (108, 85141), (109, 85150), (111, 85162), (116, 85201), (121, 85243), (123, 85264), (134, 85375), (135, 85384), (143, 85474), (144, 85477), (145, 85498), (146, 85519), (148, 85534),

Gene: Pinkcreek_131 Start: 79165, Stop: 80904, Start Num: 4

Candidate Starts for Pinkcreek_131:

(Start: 4 @79165 has 178 MA's), (Start: 5 @79183 has 3 MA's), (13, 79240), (20, 79369), (25, 79432), (27, 79456), (39, 79597), (44, 79639), (45, 79651), (46, 79666), (50, 79720), (51, 79747), (62, 79861), (65, 79888), (74, 80023), (75, 80038), (78, 80062), (83, 80176), (88, 80281), (90, 80296), (91, 80302), (100, 80386), (107, 80464), (108, 80485), (109, 80494), (111, 80506), (116, 80545), (121, 80587),

(123, 80608), (134, 80719), (135, 80728), (143, 80818), (144, 80821), (145, 80842), (146, 80863),
(148, 80878),

Gene: Pio_144 Start: 83433, Stop: 85172, Start Num: 4

Candidate Starts for Pio_144:

(Start: 4 @83433 has 178 MA's), (Start: 5 @83451 has 3 MA's), (13, 83508), (20, 83637), (25, 83700),
(27, 83724), (39, 83865), (44, 83907), (45, 83919), (46, 83934), (50, 83988), (51, 84015), (62, 84129),
(65, 84156), (74, 84291), (75, 84306), (78, 84330), (83, 84444), (88, 84549), (90, 84564), (91, 84570),
(100, 84654), (107, 84732), (108, 84753), (109, 84762), (111, 84774), (116, 84813), (121, 84855),
(123, 84876), (134, 84987), (135, 84996), (143, 85086), (144, 85089), (145, 85110), (146, 85131),
(148, 85146),

Gene: Pivoine_140 Start: 80555, Stop: 82294, Start Num: 4

Candidate Starts for Pivoine_140:

(Start: 4 @80555 has 178 MA's), (Start: 5 @80573 has 3 MA's), (20, 80759), (25, 80822), (27, 80846),
(39, 80987), (44, 81029), (45, 81041), (46, 81056), (50, 81110), (51, 81137), (62, 81251), (65, 81278),
(74, 81413), (75, 81428), (78, 81452), (83, 81566), (88, 81671), (90, 81686), (91, 81692), (100, 81776),
(107, 81854), (108, 81875), (109, 81884), (111, 81896), (116, 81935), (121, 81977), (123, 81998),
(134, 82109), (135, 82118), (143, 82208), (144, 82211), (145, 82232), (146, 82253), (148, 82268),

Gene: Pleione_143 Start: 81711, Stop: 83450, Start Num: 4

Candidate Starts for Pleione_143:

(Start: 4 @81711 has 178 MA's), (Start: 5 @81729 has 3 MA's), (13, 81786), (20, 81915), (25, 81978),
(27, 82002), (39, 82143), (44, 82185), (45, 82197), (46, 82212), (50, 82266), (51, 82293), (62, 82407),
(65, 82434), (74, 82569), (75, 82584), (78, 82608), (83, 82722), (88, 82827), (90, 82842), (91, 82848),
(100, 82932), (107, 83010), (108, 83031), (109, 83040), (111, 83052), (116, 83091), (121, 83133),
(123, 83154), (134, 83265), (135, 83274), (143, 83364), (144, 83367), (145, 83388), (146, 83409),
(148, 83424),

Gene: Primadonna_134 Start: 80196, Stop: 81935, Start Num: 4

Candidate Starts for Primadonna_134:

(Start: 4 @80196 has 178 MA's), (Start: 5 @80214 has 3 MA's), (20, 80400), (25, 80463), (27, 80487),
(39, 80628), (44, 80670), (45, 80682), (46, 80697), (50, 80751), (51, 80778), (61, 80886), (62, 80892),
(65, 80919), (74, 81054), (75, 81069), (78, 81093), (83, 81207), (88, 81312), (90, 81327), (91, 81333),
(100, 81417), (107, 81495), (108, 81516), (109, 81525), (111, 81537), (116, 81576), (121, 81618),
(123, 81639), (134, 81750), (135, 81759), (143, 81849), (144, 81852), (145, 81873), (146, 81894),
(148, 81909),

Gene: Pupper_130 Start: 85217, Stop: 86959, Start Num: 3

Candidate Starts for Pupper_130:

(Start: 3 @85217 has 11 MA's), (13, 85295), (20, 85424), (21, 85472), (22, 85475), (30, 85598), (36,
85637), (43, 85685), (48, 85739), (50, 85775), (56, 85874), (62, 85916), (66, 85955), (74, 86078), (80,
86186), (88, 86336), (90, 86351), (92, 86360), (97, 86411), (98, 86423), (108, 86540), (113, 86582),
(115, 86597), (122, 86660), (123, 86663), (130, 86744), (134, 86774),

Gene: Pupusa_146 Start: 82913, Stop: 84652, Start Num: 4

Candidate Starts for Pupusa_146:

(Start: 4 @82913 has 178 MA's), (Start: 5 @82931 has 3 MA's), (20, 83117), (25, 83180), (27, 83204),
(39, 83345), (44, 83387), (45, 83399), (46, 83414), (50, 83468), (51, 83495), (62, 83609), (65, 83636),
(74, 83771), (75, 83786), (78, 83810), (83, 83924), (88, 84029), (89, 84035), (90, 84044), (91, 84050),
(100, 84134), (107, 84212), (108, 84233), (109, 84242), (111, 84254), (116, 84293), (121, 84335),
(123, 84356), (134, 84467), (135, 84476), (143, 84566), (144, 84569), (145, 84590), (146, 84611),
(148, 84626),

Gene: PurduePete_140 Start: 81958, Stop: 83697, Start Num: 4

Candidate Starts for PurduePete_140:

(Start: 4 @81958 has 178 MA's), (Start: 5 @81976 has 3 MA's), (20, 82162), (25, 82225), (27, 82249), (39, 82390), (44, 82432), (45, 82444), (46, 82459), (50, 82513), (51, 82540), (62, 82654), (65, 82681), (74, 82816), (75, 82831), (78, 82855), (83, 82969), (88, 83074), (90, 83089), (91, 83095), (100, 83179), (107, 83257), (108, 83278), (109, 83287), (111, 83299), (116, 83338), (121, 83380), (123, 83401), (134, 83512), (135, 83521), (143, 83611), (144, 83614), (145, 83635), (146, 83656), (148, 83671),

Gene: QBert_134 Start: 80548, Stop: 82287, Start Num: 4

Candidate Starts for QBert_134:

(Start: 4 @80548 has 178 MA's), (Start: 5 @80566 has 3 MA's), (20, 80752), (25, 80815), (27, 80839), (39, 80980), (44, 81022), (45, 81034), (46, 81049), (50, 81103), (51, 81130), (61, 81238), (62, 81244), (65, 81271), (74, 81406), (75, 81421), (78, 81445), (83, 81559), (88, 81664), (90, 81679), (91, 81685), (100, 81769), (107, 81847), (108, 81868), (109, 81877), (111, 81889), (116, 81928), (121, 81970), (123, 81991), (134, 82102), (135, 82111), (143, 82201), (144, 82204), (145, 82225), (146, 82246), (148, 82261),

Gene: Quasimodo_142 Start: 81972, Stop: 83711, Start Num: 4

Candidate Starts for Quasimodo_142:

(Start: 4 @81972 has 178 MA's), (Start: 5 @81990 has 3 MA's), (20, 82176), (25, 82239), (27, 82263), (39, 82404), (44, 82446), (45, 82458), (46, 82473), (50, 82527), (51, 82554), (62, 82668), (65, 82695), (74, 82830), (75, 82845), (78, 82869), (83, 82983), (88, 83088), (90, 83103), (91, 83109), (100, 83193), (107, 83271), (108, 83292), (109, 83301), (111, 83313), (116, 83352), (121, 83394), (123, 83415), (134, 83526), (135, 83535), (143, 83625), (144, 83628), (145, 83649), (146, 83670), (148, 83685),

Gene: Rabinovish_139 Start: 82156, Stop: 83895, Start Num: 4

Candidate Starts for Rabinovish_139:

(Start: 4 @82156 has 178 MA's), (Start: 5 @82174 has 3 MA's), (13, 82231), (20, 82360), (25, 82423), (27, 82447), (39, 82588), (44, 82630), (45, 82642), (46, 82657), (50, 82711), (51, 82738), (62, 82852), (65, 82879), (74, 83014), (75, 83029), (78, 83053), (83, 83167), (88, 83272), (90, 83287), (91, 83293), (100, 83377), (107, 83455), (108, 83476), (109, 83485), (111, 83497), (116, 83536), (121, 83578), (123, 83599), (134, 83710), (135, 83719), (143, 83809), (144, 83812), (145, 83833), (146, 83854), (148, 83869),

Gene: Rahel_139 Start: 80433, Stop: 82172, Start Num: 4

Candidate Starts for Rahel_139:

(Start: 4 @80433 has 178 MA's), (Start: 5 @80451 has 3 MA's), (20, 80637), (25, 80700), (27, 80724), (39, 80865), (44, 80907), (45, 80919), (46, 80934), (50, 80988), (51, 81015), (62, 81129), (65, 81156), (74, 81291), (75, 81306), (78, 81330), (83, 81444), (88, 81549), (90, 81564), (91, 81570), (100, 81654), (107, 81732), (108, 81753), (109, 81762), (111, 81774), (116, 81813), (121, 81855), (123, 81876), (134, 81987), (135, 81996), (143, 82086), (144, 82089), (145, 82110), (146, 82131), (148, 82146),

Gene: RedWattleHog_54 Start: 51443, Stop: 53209, Start Num: 3

Candidate Starts for RedWattleHog_54:

(Start: 3 @51443 has 11 MA's), (Start: 5 @51464 has 3 MA's), (11, 51509), (Start: 16 @51554 has 1 MA's), (21, 51698), (25, 51713), (31, 51824), (32, 51830), (36, 51860), (38, 51872), (48, 51962), (49, 51974), (59, 52118), (62, 52139), (64, 52157), (66, 52178), (67, 52187), (69, 52208), (70, 52238), (75, 52319), (77, 52337), (78, 52343), (81, 52418), (84, 52460), (85, 52505), (88, 52562), (90, 52577), (93, 52604), (101, 52688), (105, 52763), (107, 52769), (108, 52790), (111, 52811), (114, 52844), (116, 52850), (118, 52880), (128, 52970), (130, 52994), (132, 53012), (134, 53024), (136, 53042), (137, 53048), (139, 53084),

Gene: Rizal_135 Start: 79581, Stop: 81320, Start Num: 4

Candidate Starts for Rizal_135:

(Start: 4 @79581 has 178 MA's), (Start: 5 @79599 has 3 MA's), (20, 79785), (25, 79848), (27, 79872), (39, 80013), (44, 80055), (45, 80067), (46, 80082), (50, 80136), (51, 80163), (62, 80277), (65, 80304), (74, 80439), (75, 80454), (78, 80478), (83, 80592), (88, 80697), (90, 80712), (91, 80718), (100, 80802), (107, 80880), (108, 80901), (109, 80910), (111, 80922), (116, 80961), (121, 81003), (123, 81024), (134, 81135), (135, 81144), (143, 81234), (144, 81237), (145, 81258), (146, 81279), (148, 81294),

Gene: RoMag_135 Start: 80745, Stop: 82484, Start Num: 4

Candidate Starts for RoMag_135:

(Start: 4 @80745 has 178 MA's), (Start: 5 @80763 has 3 MA's), (20, 80949), (25, 81012), (27, 81036), (39, 81177), (44, 81219), (45, 81231), (46, 81246), (50, 81300), (51, 81327), (62, 81441), (65, 81468), (74, 81603), (75, 81618), (78, 81642), (83, 81756), (88, 81861), (90, 81876), (91, 81882), (100, 81966), (107, 82044), (108, 82065), (109, 82074), (111, 82086), (116, 82125), (121, 82167), (123, 82188), (134, 82299), (135, 82308), (143, 82398), (144, 82401), (145, 82422), (146, 82443), (148, 82458),

Gene: Rocha_138 Start: 80998, Stop: 82737, Start Num: 4

Candidate Starts for Rocha_138:

(Start: 4 @80998 has 178 MA's), (Start: 5 @81016 has 3 MA's), (20, 81202), (25, 81265), (27, 81289), (39, 81430), (44, 81472), (45, 81484), (46, 81499), (50, 81553), (51, 81580), (62, 81694), (65, 81721), (74, 81856), (75, 81871), (78, 81895), (83, 82009), (88, 82114), (90, 82129), (91, 82135), (100, 82219), (107, 82297), (108, 82318), (109, 82327), (111, 82339), (116, 82378), (121, 82420), (123, 82441), (134, 82552), (135, 82561), (143, 82651), (144, 82654), (145, 82675), (146, 82696), (148, 82711),

Gene: Ronan_134 Start: 78694, Stop: 80433, Start Num: 4

Candidate Starts for Ronan_134:

(Start: 4 @78694 has 178 MA's), (Start: 5 @78712 has 3 MA's), (20, 78898), (25, 78961), (27, 78985), (39, 79126), (44, 79168), (45, 79180), (46, 79195), (50, 79249), (51, 79276), (62, 79390), (65, 79417), (74, 79552), (75, 79567), (78, 79591), (83, 79705), (88, 79810), (90, 79825), (91, 79831), (100, 79915), (107, 79993), (108, 80014), (109, 80023), (111, 80035), (116, 80074), (121, 80116), (123, 80137), (134, 80248), (135, 80257), (143, 80347), (144, 80350), (145, 80371), (146, 80392), (148, 80407),

Gene: Roots515_139 Start: 82210, Stop: 83949, Start Num: 4

Candidate Starts for Roots515_139:

(Start: 4 @82210 has 178 MA's), (Start: 5 @82228 has 3 MA's), (20, 82414), (25, 82477), (27, 82501), (39, 82642), (44, 82684), (45, 82696), (46, 82711), (50, 82765), (51, 82792), (61, 82900), (62, 82906), (65, 82933), (74, 83068), (75, 83083), (78, 83107), (83, 83221), (88, 83326), (90, 83341), (91, 83347), (100, 83431), (107, 83509), (108, 83530), (109, 83539), (111, 83551), (116, 83590), (121, 83632), (123, 83653), (134, 83764), (135, 83773), (143, 83863), (144, 83866), (145, 83887), (146, 83908), (148, 83923),

Gene: SCentae_129 Start: 85367, Stop: 87109, Start Num: 3

Candidate Starts for SCentae_129:

(Start: 3 @85367 has 11 MA's), (20, 85574), (22, 85625), (30, 85748), (36, 85787), (43, 85835), (48, 85889), (56, 86024), (62, 86066), (66, 86105), (69, 86135), (74, 86228), (80, 86336), (88, 86486), (90, 86501), (92, 86510), (97, 86561), (98, 86573), (108, 86690), (113, 86732), (115, 86747), (122, 86810), (123, 86813), (130, 86894), (134, 86924),

Gene: SVoro_138 Start: 81918, Stop: 83657, Start Num: 4

Candidate Starts for SVoro_138:

(Start: 4 @81918 has 178 MA's), (Start: 5 @81936 has 3 MA's), (20, 82122), (25, 82185), (27, 82209), (39, 82350), (44, 82392), (45, 82404), (46, 82419), (50, 82473), (51, 82500), (62, 82614), (65, 82641), (74, 82776), (75, 82791), (78, 82815), (83, 82929), (88, 83034), (90, 83049), (91, 83055), (100, 83139),

(107, 83217), (108, 83238), (109, 83247), (111, 83259), (116, 83298), (121, 83340), (123, 83361), (134, 83472), (135, 83481), (143, 83571), (144, 83574), (145, 83595), (146, 83616), (148, 83631),

Gene: Salacia_144 Start: 81872, Stop: 83611, Start Num: 4

Candidate Starts for Salacia_144:

(Start: 4 @81872 has 178 MA's), (Start: 5 @81890 has 3 MA's), (20, 82076), (25, 82139), (27, 82163), (39, 82304), (44, 82346), (45, 82358), (46, 82373), (50, 82427), (51, 82454), (62, 82568), (65, 82595), (74, 82730), (75, 82745), (78, 82769), (83, 82883), (88, 82988), (90, 83003), (91, 83009), (100, 83093), (107, 83171), (108, 83192), (109, 83201), (111, 83213), (116, 83252), (121, 83294), (123, 83315), (134, 83426), (135, 83435), (143, 83525), (144, 83528), (145, 83549), (146, 83570), (148, 83585),

Gene: Sauce_140 Start: 80488, Stop: 82227, Start Num: 4

Candidate Starts for Sauce_140:

(Start: 4 @80488 has 178 MA's), (Start: 5 @80506 has 3 MA's), (20, 80692), (25, 80755), (27, 80779), (39, 80920), (44, 80962), (45, 80974), (46, 80989), (50, 81043), (51, 81070), (61, 81178), (62, 81184), (65, 81211), (74, 81346), (75, 81361), (78, 81385), (83, 81499), (88, 81604), (90, 81619), (91, 81625), (100, 81709), (107, 81787), (108, 81808), (109, 81817), (111, 81829), (116, 81868), (121, 81910), (123, 81931), (134, 82042), (135, 82051), (143, 82141), (144, 82144), (145, 82165), (146, 82186), (148, 82201),

Gene: ScoobyDoobyDoo_132 Start: 80816, Stop: 82447, Start Num: 16

Candidate Starts for ScoobyDoobyDoo_132:

(15, 80807), (Start: 16 @80816 has 1 MA's), (21, 80960), (33, 81110), (36, 81125), (38, 81137), (41, 81158), (49, 81239), (51, 81290), (54, 81350), (56, 81362), (60, 81389), (65, 81431), (75, 81581), (76, 81584), (83, 81719), (88, 81824), (94, 81869), (97, 81899), (103, 81953), (104, 81971), (109, 82037), (111, 82049), (116, 82088), (123, 82151), (133, 82253), (134, 82262), (136, 82280), (149, 82424),

Gene: ScottMcG_136 Start: 80494, Stop: 82233, Start Num: 4

Candidate Starts for ScottMcG_136:

(Start: 4 @80494 has 178 MA's), (Start: 5 @80512 has 3 MA's), (20, 80698), (25, 80761), (27, 80785), (39, 80926), (44, 80968), (45, 80980), (46, 80995), (50, 81049), (51, 81076), (61, 81184), (62, 81190), (65, 81217), (74, 81352), (75, 81367), (78, 81391), (83, 81505), (88, 81610), (90, 81625), (91, 81631), (100, 81715), (107, 81793), (108, 81814), (109, 81823), (111, 81835), (116, 81874), (121, 81916), (123, 81937), (134, 82048), (135, 82057), (143, 82147), (144, 82150), (145, 82171), (146, 82192), (148, 82207),

Gene: Sebata_140 Start: 81957, Stop: 83696, Start Num: 4

Candidate Starts for Sebata_140:

(Start: 4 @81957 has 178 MA's), (Start: 5 @81975 has 3 MA's), (13, 82032), (20, 82161), (25, 82224), (27, 82248), (39, 82389), (44, 82431), (45, 82443), (46, 82458), (50, 82512), (51, 82539), (62, 82653), (65, 82680), (74, 82815), (75, 82830), (78, 82854), (83, 82968), (88, 83073), (90, 83088), (91, 83094), (100, 83178), (107, 83256), (108, 83277), (109, 83286), (111, 83298), (116, 83337), (121, 83379), (123, 83400), (134, 83511), (135, 83520), (143, 83610), (144, 83613), (145, 83634), (146, 83655), (148, 83670),

Gene: Settecandela_85 Start: 62799, Stop: 64553, Start Num: 3

Candidate Starts for Settecandela_85:

(Start: 3 @62799 has 11 MA's), (17, 62952), (30, 63192), (31, 63195), (34, 63219), (35, 63225), (36, 63231), (44, 63288), (57, 63471), (68, 63570), (72, 63660), (74, 63672), (80, 63780), (86, 63885), (88, 63930), (90, 63945), (91, 63951), (92, 63954), (95, 63978), (96, 63990), (97, 64005), (99, 64020), (111, 64155), (112, 64158), (115, 64191), (116, 64194), (124, 64260), (129, 64332), (132, 64356), (134, 64368), (135, 64377), (147, 64518),

Gene: Shaqnato_133 Start: 79538, Stop: 81277, Start Num: 4

Candidate Starts for Shaqnato_133:

(Start: 4 @79538 has 178 MA's), (Start: 5 @79556 has 3 MA's), (13, 79613), (20, 79742), (25, 79805), (27, 79829), (39, 79970), (44, 80012), (45, 80024), (46, 80039), (50, 80093), (51, 80120), (62, 80234), (65, 80261), (74, 80396), (75, 80411), (78, 80435), (83, 80549), (88, 80654), (90, 80669), (91, 80675), (100, 80759), (107, 80837), (108, 80858), (109, 80867), (111, 80879), (116, 80918), (121, 80960), (123, 80981), (134, 81092), (135, 81101), (143, 81191), (144, 81194), (145, 81215), (146, 81236), (148, 81251),

Gene: Shelob_142 Start: 82340, Stop: 84079, Start Num: 4

Candidate Starts for Shelob_142:

(Start: 4 @82340 has 178 MA's), (Start: 5 @82358 has 3 MA's), (20, 82544), (25, 82607), (27, 82631), (39, 82772), (44, 82814), (45, 82826), (46, 82841), (50, 82895), (51, 82922), (62, 83036), (65, 83063), (74, 83198), (75, 83213), (78, 83237), (83, 83351), (88, 83456), (90, 83471), (91, 83477), (100, 83561), (107, 83639), (108, 83660), (109, 83669), (111, 83681), (116, 83720), (121, 83762), (123, 83783), (134, 83894), (135, 83903), (143, 83993), (144, 83996), (145, 84017), (146, 84038), (148, 84053),

Gene: ShiaLabeouf_139 Start: 80868, Stop: 82607, Start Num: 4

Candidate Starts for ShiaLabeouf_139:

(Start: 4 @80868 has 178 MA's), (Start: 5 @80886 has 3 MA's), (20, 81072), (25, 81135), (27, 81159), (39, 81300), (44, 81342), (45, 81354), (46, 81369), (50, 81423), (51, 81450), (62, 81564), (65, 81591), (74, 81726), (75, 81741), (78, 81765), (83, 81879), (88, 81984), (90, 81999), (91, 82005), (100, 82089), (107, 82167), (108, 82188), (109, 82197), (111, 82209), (116, 82248), (121, 82290), (123, 82311), (134, 82422), (135, 82431), (143, 82521), (144, 82524), (145, 82545), (146, 82566), (148, 82581),

Gene: Shifa_129 Start: 79764, Stop: 81503, Start Num: 4

Candidate Starts for Shifa_129:

(Start: 4 @79764 has 178 MA's), (Start: 5 @79782 has 3 MA's), (13, 79839), (20, 79968), (25, 80031), (27, 80055), (39, 80196), (44, 80238), (45, 80250), (46, 80265), (50, 80319), (51, 80346), (62, 80460), (65, 80487), (74, 80622), (75, 80637), (78, 80661), (83, 80775), (88, 80880), (90, 80895), (91, 80901), (100, 80985), (107, 81063), (108, 81084), (109, 81093), (111, 81105), (116, 81144), (121, 81186), (123, 81207), (134, 81318), (135, 81327), (143, 81417), (144, 81420), (145, 81441), (146, 81462), (148, 81477),

Gene: Shnickers_140 Start: 80832, Stop: 82571, Start Num: 4

Candidate Starts for Shnickers_140:

(Start: 4 @80832 has 178 MA's), (Start: 5 @80850 has 3 MA's), (20, 81036), (25, 81099), (27, 81123), (39, 81264), (44, 81306), (45, 81318), (46, 81333), (50, 81387), (51, 81414), (61, 81522), (62, 81528), (65, 81555), (74, 81690), (75, 81705), (78, 81729), (83, 81843), (88, 81948), (90, 81963), (91, 81969), (100, 82053), (107, 82131), (108, 82152), (109, 82161), (111, 82173), (116, 82212), (121, 82254), (123, 82275), (134, 82386), (135, 82395), (143, 82485), (144, 82488), (145, 82509), (146, 82530), (148, 82545),

Gene: Shrimp_140 Start: 81551, Stop: 83290, Start Num: 4

Candidate Starts for Shrimp_140:

(Start: 4 @81551 has 178 MA's), (Start: 5 @81569 has 3 MA's), (20, 81755), (25, 81818), (27, 81842), (39, 81983), (44, 82025), (45, 82037), (46, 82052), (50, 82106), (51, 82133), (61, 82241), (62, 82247), (65, 82274), (74, 82409), (75, 82424), (78, 82448), (83, 82562), (88, 82667), (90, 82682), (91, 82688), (100, 82772), (107, 82850), (108, 82871), (109, 82880), (111, 82892), (116, 82931), (121, 82973), (123, 82994), (134, 83105), (135, 83114), (143, 83204), (144, 83207), (145, 83228), (146, 83249), (148, 83264),

Gene: SilverDipper_142 Start: 80555, Stop: 82294, Start Num: 4

Candidate Starts for SilverDipper_142:

(Start: 4 @80555 has 178 MA's), (Start: 5 @80573 has 3 MA's), (20, 80759), (25, 80822), (27, 80846), (39, 80987), (44, 81029), (45, 81041), (46, 81056), (50, 81110), (51, 81137), (62, 81251), (65, 81278), (74, 81413), (75, 81428), (78, 81452), (83, 81566), (88, 81671), (90, 81686), (91, 81692), (100, 81776), (107, 81854), (108, 81875), (109, 81884), (111, 81896), (116, 81935), (121, 81977), (123, 81998), (134, 82109), (135, 82118), (143, 82208), (144, 82211), (145, 82232), (146, 82253), (148, 82268),

Gene: Skog_192 Start: 115095, Stop: 116837, Start Num: 3

Candidate Starts for Skog_192:

(Start: 3 @115095 has 11 MA's), (14, 115194), (20, 115302), (21, 115350), (22, 115353), (29, 115401), (30, 115476), (47, 115608), (48, 115617), (49, 115629), (53, 115734), (56, 115752), (66, 115833), (69, 115863), (75, 115971), (80, 116064), (88, 116214), (90, 116229), (91, 116235), (93, 116256), (97, 116289), (98, 116301), (109, 116427), (111, 116439), (115, 116475), (120, 116514), (128, 116598), (130, 116622), (134, 116652), (144, 116754), (147, 116802),

Gene: SmallFry_140 Start: 80057, Stop: 81796, Start Num: 4

Candidate Starts for SmallFry_140:

(Start: 4 @80057 has 178 MA's), (Start: 5 @80075 has 3 MA's), (20, 80261), (25, 80324), (27, 80348), (39, 80489), (44, 80531), (45, 80543), (46, 80558), (50, 80612), (51, 80639), (62, 80753), (65, 80780), (74, 80915), (75, 80930), (78, 80954), (83, 81068), (88, 81173), (90, 81188), (91, 81194), (100, 81278), (107, 81356), (108, 81377), (109, 81386), (111, 81398), (116, 81437), (121, 81479), (123, 81500), (134, 81611), (135, 81620), (143, 81710), (144, 81713), (145, 81734), (146, 81755), (148, 81770),

Gene: SoilZilla_136 Start: 80831, Stop: 82570, Start Num: 4

Candidate Starts for SoilZilla_136:

(Start: 4 @80831 has 178 MA's), (Start: 5 @80849 has 3 MA's), (20, 81035), (25, 81098), (27, 81122), (39, 81263), (44, 81305), (45, 81317), (46, 81332), (50, 81386), (51, 81413), (62, 81527), (65, 81554), (74, 81689), (75, 81704), (78, 81728), (83, 81842), (88, 81947), (90, 81962), (91, 81968), (100, 82052), (107, 82130), (108, 82151), (109, 82160), (111, 82172), (116, 82211), (121, 82253), (123, 82274), (134, 82385), (135, 82394), (143, 82484), (144, 82487), (145, 82508), (146, 82529), (148, 82544),

Gene: Spec_136 Start: 80597, Stop: 82336, Start Num: 4

Candidate Starts for Spec_136:

(Start: 4 @80597 has 178 MA's), (Start: 5 @80615 has 3 MA's), (20, 80801), (25, 80864), (27, 80888), (39, 81029), (44, 81071), (45, 81083), (46, 81098), (50, 81152), (51, 81179), (61, 81287), (62, 81293), (65, 81320), (74, 81455), (75, 81470), (78, 81494), (83, 81608), (88, 81713), (90, 81728), (91, 81734), (100, 81818), (107, 81896), (108, 81917), (109, 81926), (111, 81938), (116, 81977), (121, 82019), (123, 82040), (134, 82151), (135, 82160), (143, 82250), (144, 82253), (145, 82274), (146, 82295), (148, 82310),

Gene: Specks_145 Start: 82722, Stop: 84461, Start Num: 4

Candidate Starts for Specks_145:

(Start: 4 @82722 has 178 MA's), (Start: 5 @82740 has 3 MA's), (20, 82926), (25, 82989), (27, 83013), (39, 83154), (44, 83196), (45, 83208), (46, 83223), (50, 83277), (51, 83304), (62, 83418), (65, 83445), (74, 83580), (75, 83595), (78, 83619), (83, 83733), (88, 83838), (90, 83853), (91, 83859), (100, 83943), (107, 84021), (108, 84042), (109, 84051), (111, 84063), (116, 84102), (121, 84144), (123, 84165), (134, 84276), (135, 84285), (143, 84375), (144, 84378), (145, 84399), (146, 84420), (148, 84435),

Gene: Sprinklers_136 Start: 80113, Stop: 81852, Start Num: 4

Candidate Starts for Sprinklers_136:

(Start: 4 @80113 has 178 MA's), (Start: 5 @80131 has 3 MA's), (20, 80317), (25, 80380), (27, 80404), (39, 80545), (44, 80587), (45, 80599), (46, 80614), (50, 80668), (51, 80695), (62, 80809), (65, 80836), (74, 80971), (75, 80986), (78, 81010), (83, 81124), (88, 81229), (90, 81244), (91, 81250), (100, 81334),

(107, 81412), (108, 81433), (109, 81442), (111, 81454), (116, 81493), (121, 81535), (123, 81556), (134, 81667), (135, 81676), (143, 81766), (144, 81769), (145, 81790), (146, 81811), (148, 81826),

Gene: Spud_139 Start: 81618, Stop: 83357, Start Num: 4

Candidate Starts for Spud_139:

(Start: 4 @81618 has 178 MA's), (Start: 5 @81636 has 3 MA's), (20, 81822), (25, 81885), (27, 81909), (39, 82050), (44, 82092), (45, 82104), (46, 82119), (50, 82173), (51, 82200), (61, 82308), (62, 82314), (65, 82341), (74, 82476), (75, 82491), (78, 82515), (83, 82629), (88, 82734), (90, 82749), (91, 82755), (100, 82839), (107, 82917), (108, 82938), (109, 82947), (111, 82959), (116, 82998), (121, 83040), (123, 83061), (134, 83172), (135, 83181), (143, 83271), (144, 83274), (145, 83295), (146, 83316), (148, 83331),

Gene: SrishMeg2525_139 Start: 81641, Stop: 83380, Start Num: 4

Candidate Starts for SrishMeg2525_139:

(Start: 4 @81641 has 178 MA's), (Start: 5 @81659 has 3 MA's), (13, 81716), (20, 81845), (25, 81908), (27, 81932), (39, 82073), (44, 82115), (45, 82127), (46, 82142), (50, 82196), (51, 82223), (62, 82337), (65, 82364), (74, 82499), (75, 82514), (78, 82538), (83, 82652), (88, 82757), (90, 82772), (91, 82778), (100, 82862), (107, 82940), (108, 82961), (109, 82970), (111, 82982), (116, 83021), (121, 83063), (123, 83084), (134, 83195), (135, 83204), (143, 83294), (144, 83297), (145, 83318), (146, 83339), (148, 83354),

Gene: StephanieG_138 Start: 82450, Stop: 84189, Start Num: 4

Candidate Starts for StephanieG_138:

(Start: 4 @82450 has 178 MA's), (Start: 5 @82468 has 3 MA's), (20, 82654), (25, 82717), (27, 82741), (39, 82882), (44, 82924), (45, 82936), (46, 82951), (50, 83005), (51, 83032), (62, 83146), (65, 83173), (74, 83308), (75, 83323), (78, 83347), (83, 83461), (88, 83566), (90, 83581), (91, 83587), (100, 83671), (107, 83749), (108, 83770), (109, 83779), (111, 83791), (116, 83830), (121, 83872), (123, 83893), (134, 84004), (135, 84013), (143, 84103), (144, 84106), (145, 84127), (146, 84148), (148, 84163),

Gene: Stormageddon_51 Start: 51426, Stop: 53192, Start Num: 3

Candidate Starts for Stormageddon_51:

(Start: 3 @51426 has 11 MA's), (Start: 5 @51447 has 3 MA's), (11, 51492), (Start: 16 @51537 has 1 MA's), (21, 51681), (25, 51696), (31, 51807), (32, 51813), (36, 51843), (38, 51855), (48, 51945), (49, 51957), (59, 52101), (62, 52122), (64, 52140), (66, 52161), (67, 52170), (69, 52191), (70, 52221), (75, 52302), (77, 52320), (78, 52326), (81, 52401), (84, 52443), (85, 52488), (88, 52545), (90, 52560), (93, 52587), (101, 52671), (105, 52746), (107, 52752), (108, 52773), (111, 52794), (114, 52827), (116, 52833), (118, 52863), (128, 52953), (130, 52977), (132, 52995), (134, 53007), (136, 53025), (137, 53031), (139, 53067),

Gene: Stubby_133 Start: 80080, Stop: 81819, Start Num: 4

Candidate Starts for Stubby_133:

(Start: 4 @80080 has 178 MA's), (Start: 5 @80098 has 3 MA's), (13, 80155), (20, 80284), (25, 80347), (27, 80371), (39, 80512), (44, 80554), (45, 80566), (46, 80581), (50, 80635), (51, 80662), (62, 80776), (65, 80803), (74, 80938), (75, 80953), (78, 80977), (83, 81091), (88, 81196), (90, 81211), (91, 81217), (100, 81301), (107, 81379), (108, 81400), (109, 81409), (111, 81421), (116, 81460), (121, 81502), (123, 81523), (134, 81634), (135, 81643), (143, 81733), (144, 81736), (145, 81757), (146, 81778), (148, 81793),

Gene: StubbySaigey_144 Start: 80715, Stop: 82454, Start Num: 4

Candidate Starts for StubbySaigey_144:

(Start: 4 @80715 has 178 MA's), (Start: 5 @80733 has 3 MA's), (20, 80919), (25, 80982), (27, 81006), (39, 81147), (44, 81189), (45, 81201), (46, 81216), (50, 81270), (51, 81297), (62, 81411), (65, 81438), (74, 81573), (75, 81588), (78, 81612), (83, 81726), (88, 81831), (90, 81846), (91, 81852), (100, 81936),

(107, 82014), (108, 82035), (109, 82044), (111, 82056), (116, 82095), (121, 82137), (123, 82158), (134, 82269), (135, 82278), (143, 82368), (144, 82371), (145, 82392), (146, 82413), (148, 82428),

Gene: Substance289_138 Start: 80350, Stop: 82089, Start Num: 4

Candidate Starts for Substance289_138:

(Start: 4 @80350 has 178 MA's), (Start: 5 @80368 has 3 MA's), (20, 80554), (25, 80617), (27, 80641), (39, 80782), (44, 80824), (45, 80836), (46, 80851), (50, 80905), (51, 80932), (61, 81040), (62, 81046), (65, 81073), (74, 81208), (75, 81223), (78, 81247), (83, 81361), (88, 81466), (90, 81481), (91, 81487), (100, 81571), (107, 81649), (108, 81670), (109, 81679), (111, 81691), (116, 81730), (121, 81772), (123, 81793), (134, 81904), (135, 81913), (143, 82003), (144, 82006), (145, 82027), (146, 82048), (148, 82063),

Gene: Tainan_143 Start: 82045, Stop: 83784, Start Num: 4

Candidate Starts for Tainan_143:

(Start: 4 @82045 has 178 MA's), (Start: 5 @82063 has 3 MA's), (20, 82249), (25, 82312), (27, 82336), (39, 82477), (44, 82519), (45, 82531), (46, 82546), (50, 82600), (51, 82627), (62, 82741), (65, 82768), (74, 82903), (75, 82918), (78, 82942), (83, 83056), (88, 83161), (89, 83167), (90, 83176), (91, 83182), (100, 83266), (107, 83344), (108, 83365), (109, 83374), (111, 83386), (116, 83425), (121, 83467), (123, 83488), (134, 83599), (135, 83608), (143, 83698), (144, 83701), (145, 83722), (146, 83743), (148, 83758),

Gene: Teardrop_139 Start: 80046, Stop: 81785, Start Num: 4

Candidate Starts for Teardrop_139:

(Start: 4 @80046 has 178 MA's), (Start: 5 @80064 has 3 MA's), (20, 80250), (25, 80313), (27, 80337), (39, 80478), (44, 80520), (45, 80532), (46, 80547), (50, 80601), (51, 80628), (62, 80742), (65, 80769), (74, 80904), (75, 80919), (78, 80943), (83, 81057), (88, 81162), (90, 81177), (91, 81183), (100, 81267), (107, 81345), (108, 81366), (109, 81375), (111, 81387), (116, 81426), (121, 81468), (123, 81489), (134, 81600), (135, 81609), (143, 81699), (144, 81702), (145, 81723), (146, 81744), (148, 81759),

Gene: TinyTim_140 Start: 81298, Stop: 83037, Start Num: 4

Candidate Starts for TinyTim_140:

(Start: 4 @81298 has 178 MA's), (Start: 5 @81316 has 3 MA's), (20, 81502), (25, 81565), (27, 81589), (39, 81730), (44, 81772), (45, 81784), (46, 81799), (50, 81853), (51, 81880), (62, 81994), (65, 82021), (74, 82156), (75, 82171), (78, 82195), (83, 82309), (88, 82414), (90, 82429), (91, 82435), (100, 82519), (107, 82597), (108, 82618), (109, 82627), (111, 82639), (116, 82678), (121, 82720), (123, 82741), (134, 82852), (135, 82861), (143, 82951), (144, 82954), (145, 82975), (146, 82996), (148, 83011),

Gene: Tonenili_153 Start: 84058, Stop: 85797, Start Num: 4

Candidate Starts for Tonenili_153:

(Start: 4 @84058 has 178 MA's), (Start: 5 @84076 has 3 MA's), (11, 84121), (13, 84133), (25, 84325), (37, 84484), (46, 84559), (50, 84613), (51, 84640), (62, 84754), (63, 84769), (65, 84781), (74, 84916), (75, 84931), (76, 84934), (83, 85069), (88, 85174), (90, 85189), (102, 85294), (103, 85303), (108, 85378), (111, 85399), (114, 85432), (116, 85438), (118, 85468), (121, 85480), (123, 85501), (134, 85612), (135, 85621), (143, 85711), (144, 85714), (146, 85756), (148, 85771),

Gene: Tortoise16_137 Start: 80657, Stop: 82396, Start Num: 4

Candidate Starts for Tortoise16_137:

(Start: 4 @80657 has 178 MA's), (Start: 5 @80675 has 3 MA's), (20, 80861), (25, 80924), (27, 80948), (39, 81089), (44, 81131), (45, 81143), (46, 81158), (50, 81212), (51, 81239), (62, 81353), (65, 81380), (74, 81515), (75, 81530), (78, 81554), (83, 81668), (88, 81773), (90, 81788), (91, 81794), (100, 81878), (107, 81956), (108, 81977), (109, 81986), (111, 81998), (116, 82037), (121, 82079), (123, 82100), (134, 82211), (135, 82220), (143, 82310), (144, 82313), (145, 82334), (146, 82355), (148, 82370),

Gene: Trinitium_138 Start: 80481, Stop: 82220, Start Num: 4

Candidate Starts for Trinitium_138:

(Start: 4 @80481 has 178 MA's), (Start: 5 @80499 has 3 MA's), (20, 80685), (25, 80748), (27, 80772), (39, 80913), (44, 80955), (45, 80967), (46, 80982), (50, 81036), (51, 81063), (61, 81171), (62, 81177), (65, 81204), (74, 81339), (75, 81354), (78, 81378), (83, 81492), (88, 81597), (90, 81612), (91, 81618), (100, 81702), (107, 81780), (108, 81801), (109, 81810), (111, 81822), (116, 81861), (121, 81903), (123, 81924), (134, 82035), (135, 82044), (143, 82134), (144, 82137), (145, 82158), (146, 82179), (148, 82194),

Gene: Turret_136 Start: 79926, Stop: 81665, Start Num: 4

Candidate Starts for Turret_136:

(Start: 4 @79926 has 178 MA's), (Start: 5 @79944 has 3 MA's), (20, 80130), (25, 80193), (27, 80217), (39, 80358), (44, 80400), (45, 80412), (46, 80427), (50, 80481), (51, 80508), (62, 80622), (65, 80649), (74, 80784), (75, 80799), (78, 80823), (83, 80937), (88, 81042), (90, 81057), (91, 81063), (100, 81147), (107, 81225), (108, 81246), (109, 81255), (111, 81267), (116, 81306), (121, 81348), (123, 81369), (134, 81480), (135, 81489), (143, 81579), (144, 81582), (145, 81603), (146, 81624), (148, 81639),

Gene: Tyke_140 Start: 81953, Stop: 83692, Start Num: 4

Candidate Starts for Tyke_140:

(Start: 4 @81953 has 178 MA's), (Start: 5 @81971 has 3 MA's), (20, 82157), (25, 82220), (27, 82244), (39, 82385), (44, 82427), (45, 82439), (46, 82454), (50, 82508), (51, 82535), (62, 82649), (65, 82676), (74, 82811), (75, 82826), (78, 82850), (83, 82964), (88, 83069), (90, 83084), (91, 83090), (100, 83174), (107, 83252), (108, 83273), (109, 83282), (111, 83294), (116, 83333), (121, 83375), (123, 83396), (134, 83507), (135, 83516), (143, 83606), (144, 83609), (145, 83630), (146, 83651), (148, 83666),

Gene: ValleyTerrace_141 Start: 80555, Stop: 82294, Start Num: 4

Candidate Starts for ValleyTerrace_141:

(Start: 4 @80555 has 178 MA's), (Start: 5 @80573 has 3 MA's), (20, 80759), (25, 80822), (27, 80846), (39, 80987), (44, 81029), (45, 81041), (46, 81056), (50, 81110), (51, 81137), (62, 81251), (65, 81278), (74, 81413), (75, 81428), (78, 81452), (83, 81566), (88, 81671), (90, 81686), (91, 81692), (100, 81776), (107, 81854), (108, 81875), (109, 81884), (111, 81896), (116, 81935), (121, 81977), (123, 81998), (134, 82109), (135, 82118), (143, 82208), (144, 82211), (145, 82232), (146, 82253), (148, 82268),

Gene: Vortrix_152 Start: 83371, Stop: 85110, Start Num: 4

Candidate Starts for Vortrix_152:

(Start: 4 @83371 has 178 MA's), (Start: 5 @83389 has 3 MA's), (11, 83434), (13, 83446), (25, 83638), (37, 83797), (46, 83872), (50, 83926), (51, 83953), (62, 84067), (63, 84082), (65, 84094), (74, 84229), (75, 84244), (76, 84247), (83, 84382), (84, 84385), (88, 84487), (90, 84502), (102, 84607), (103, 84616), (108, 84691), (111, 84712), (114, 84745), (115, 84748), (116, 84751), (118, 84781), (121, 84793), (123, 84814), (134, 84925), (135, 84934), (143, 85024), (144, 85027), (146, 85069), (148, 85084),

Gene: Wally_139 Start: 80076, Stop: 81815, Start Num: 4

Candidate Starts for Wally_139:

(Start: 4 @80076 has 178 MA's), (Start: 5 @80094 has 3 MA's), (20, 80280), (25, 80343), (27, 80367), (39, 80508), (44, 80550), (45, 80562), (46, 80577), (50, 80631), (51, 80658), (62, 80772), (65, 80799), (74, 80934), (75, 80949), (78, 80973), (83, 81087), (88, 81192), (90, 81207), (91, 81213), (100, 81297), (107, 81375), (108, 81396), (109, 81405), (111, 81417), (116, 81456), (121, 81498), (123, 81519), (134, 81630), (135, 81639), (143, 81729), (144, 81732), (145, 81753), (146, 81774), (148, 81789),

Gene: Willis_141 Start: 81443, Stop: 83182, Start Num: 4

Candidate Starts for Willis_141:

(Start: 4 @81443 has 178 MA's), (Start: 5 @81461 has 3 MA's), (20, 81647), (25, 81710), (27, 81734), (39, 81875), (44, 81917), (45, 81929), (46, 81944), (50, 81998), (51, 82025), (62, 82139), (65, 82166), (74, 82301), (75, 82316), (78, 82340), (83, 82454), (88, 82559), (90, 82574), (91, 82580), (100, 82664), (107, 82742), (108, 82763), (109, 82772), (111, 82784), (116, 82823), (121, 82865), (123, 82886), (134, 82997), (135, 83006), (143, 83096), (144, 83099), (145, 83120), (146, 83141), (148, 83156),

Gene: Yassified_137 Start: 80153, Stop: 81892, Start Num: 4

Candidate Starts for Yassified_137:

(Start: 4 @80153 has 178 MA's), (Start: 5 @80171 has 3 MA's), (20, 80357), (25, 80420), (27, 80444), (39, 80585), (44, 80627), (45, 80639), (46, 80654), (50, 80708), (51, 80735), (62, 80849), (65, 80876), (74, 81011), (75, 81026), (78, 81050), (83, 81164), (88, 81269), (90, 81284), (91, 81290), (100, 81374), (107, 81452), (108, 81473), (109, 81482), (111, 81494), (116, 81533), (121, 81575), (123, 81596), (134, 81707), (135, 81716), (143, 81806), (144, 81809), (145, 81830), (146, 81851), (148, 81866),

Gene: YemiJoy2021_141 Start: 81536, Stop: 83275, Start Num: 4

Candidate Starts for YemiJoy2021_141:

(Start: 4 @81536 has 178 MA's), (Start: 5 @81554 has 3 MA's), (13, 81611), (20, 81740), (25, 81803), (27, 81827), (39, 81968), (44, 82010), (45, 82022), (46, 82037), (50, 82091), (51, 82118), (62, 82232), (65, 82259), (74, 82394), (75, 82409), (78, 82433), (83, 82547), (88, 82652), (90, 82667), (91, 82673), (100, 82757), (107, 82835), (108, 82856), (109, 82865), (111, 82877), (116, 82916), (121, 82958), (123, 82979), (134, 83090), (135, 83099), (143, 83189), (144, 83192), (145, 83213), (146, 83234), (148, 83249),

Gene: YoungMoneyMata_142 Start: 81181, Stop: 82920, Start Num: 4

Candidate Starts for YoungMoneyMata_142:

(Start: 4 @81181 has 178 MA's), (Start: 5 @81199 has 3 MA's), (20, 81385), (25, 81448), (27, 81472), (39, 81613), (44, 81655), (45, 81667), (46, 81682), (50, 81736), (51, 81763), (61, 81871), (62, 81877), (65, 81904), (74, 82039), (75, 82054), (78, 82078), (83, 82192), (88, 82297), (90, 82312), (91, 82318), (100, 82402), (107, 82480), (108, 82501), (109, 82510), (111, 82522), (116, 82561), (121, 82603), (123, 82624), (134, 82735), (135, 82744), (143, 82834), (144, 82837), (145, 82858), (146, 82879), (148, 82894),

Gene: Yucca_139 Start: 81218, Stop: 82957, Start Num: 4

Candidate Starts for Yucca_139:

(Start: 4 @81218 has 178 MA's), (Start: 5 @81236 has 3 MA's), (13, 81293), (20, 81422), (25, 81485), (27, 81509), (39, 81650), (44, 81692), (45, 81704), (46, 81719), (50, 81773), (51, 81800), (62, 81914), (65, 81941), (74, 82076), (75, 82091), (78, 82115), (83, 82229), (88, 82334), (90, 82349), (91, 82355), (100, 82439), (107, 82517), (108, 82538), (109, 82547), (111, 82559), (116, 82598), (121, 82640), (123, 82661), (134, 82772), (135, 82781), (143, 82871), (144, 82874), (145, 82895), (146, 82916), (148, 82931),

Gene: Zalkecks_141 Start: 81219, Stop: 82958, Start Num: 4

Candidate Starts for Zalkecks_141:

(Start: 4 @81219 has 178 MA's), (Start: 5 @81237 has 3 MA's), (13, 81294), (20, 81423), (25, 81486), (27, 81510), (39, 81651), (44, 81693), (45, 81705), (46, 81720), (50, 81774), (51, 81801), (62, 81915), (65, 81942), (74, 82077), (75, 82092), (78, 82116), (83, 82230), (88, 82335), (90, 82350), (91, 82356), (100, 82440), (107, 82518), (108, 82539), (109, 82548), (111, 82560), (116, 82599), (121, 82641), (123, 82662), (134, 82773), (135, 82782), (143, 82872), (144, 82875), (145, 82896), (146, 82917), (148, 82932),

Gene: Zeenon_141 Start: 81304, Stop: 83043, Start Num: 4

Candidate Starts for Zeenon_141:

(Start: 4 @81304 has 178 MA's), (Start: 5 @81322 has 3 MA's), (13, 81379), (20, 81508), (25, 81571), (27, 81595), (39, 81736), (44, 81778), (45, 81790), (46, 81805), (50, 81859), (51, 81886), (62, 82000), (65, 82027), (74, 82162), (75, 82177), (78, 82201), (83, 82315), (88, 82420), (90, 82435), (91, 82441), (100, 82525), (107, 82603), (108, 82624), (109, 82633), (111, 82645), (116, 82684), (121, 82726), (123, 82747), (134, 82858), (135, 82867), (143, 82957), (144, 82960), (145, 82981), (146, 83002), (148, 83017),

Gene: ZygoTaiga_138 Start: 82463, Stop: 84202, Start Num: 4

Candidate Starts for ZygoTaiga_138:

(Start: 4 @82463 has 178 MA's), (Start: 5 @82481 has 3 MA's), (20, 82667), (25, 82730), (27, 82754), (39, 82895), (44, 82937), (45, 82949), (46, 82964), (50, 83018), (51, 83045), (62, 83159), (65, 83186), (74, 83321), (75, 83336), (78, 83360), (83, 83474), (88, 83579), (90, 83594), (91, 83600), (100, 83684), (107, 83762), (108, 83783), (109, 83792), (111, 83804), (116, 83843), (121, 83885), (123, 83906), (134, 84017), (135, 84026), (143, 84116), (144, 84119), (145, 84140), (146, 84161), (148, 84176),