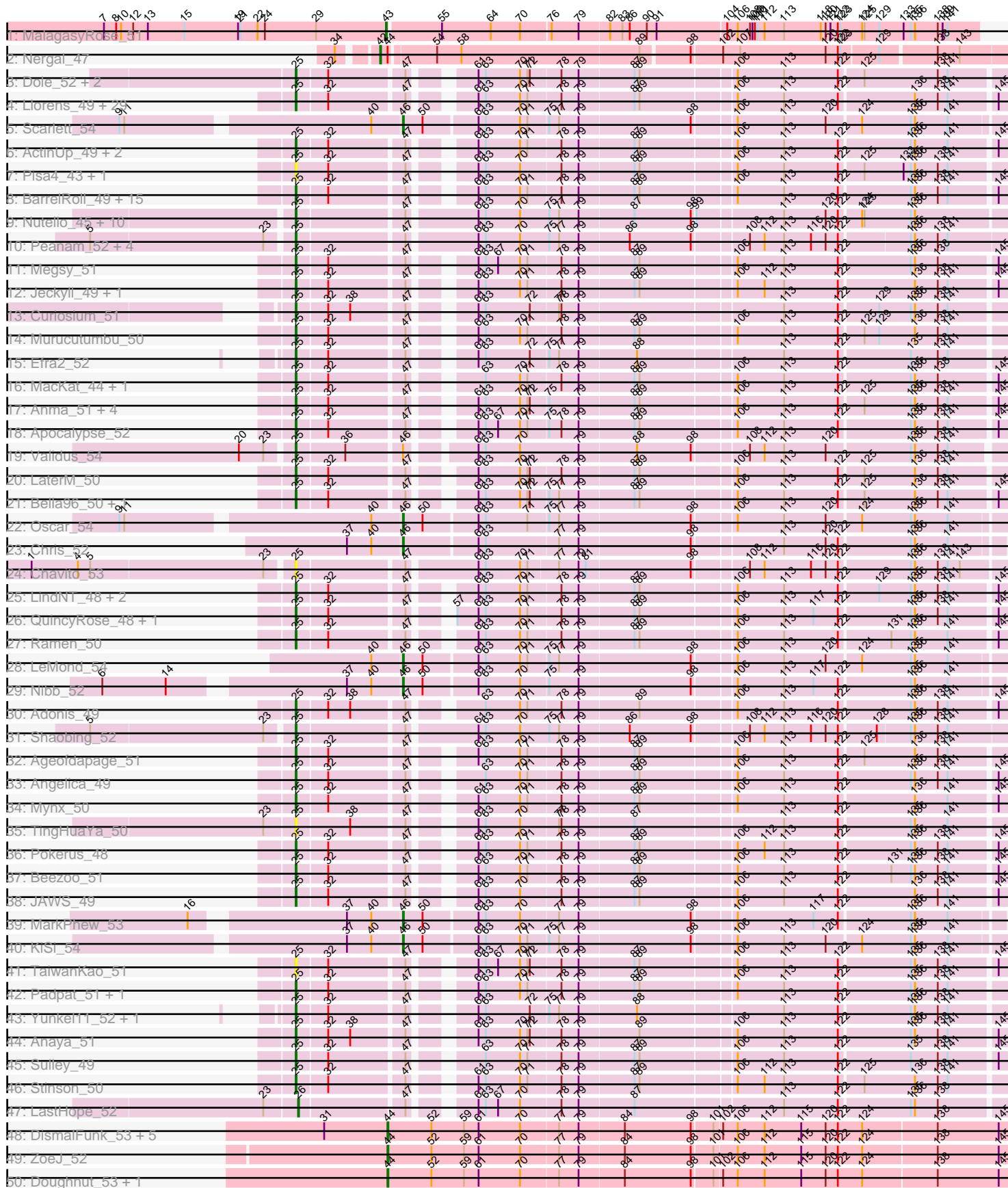
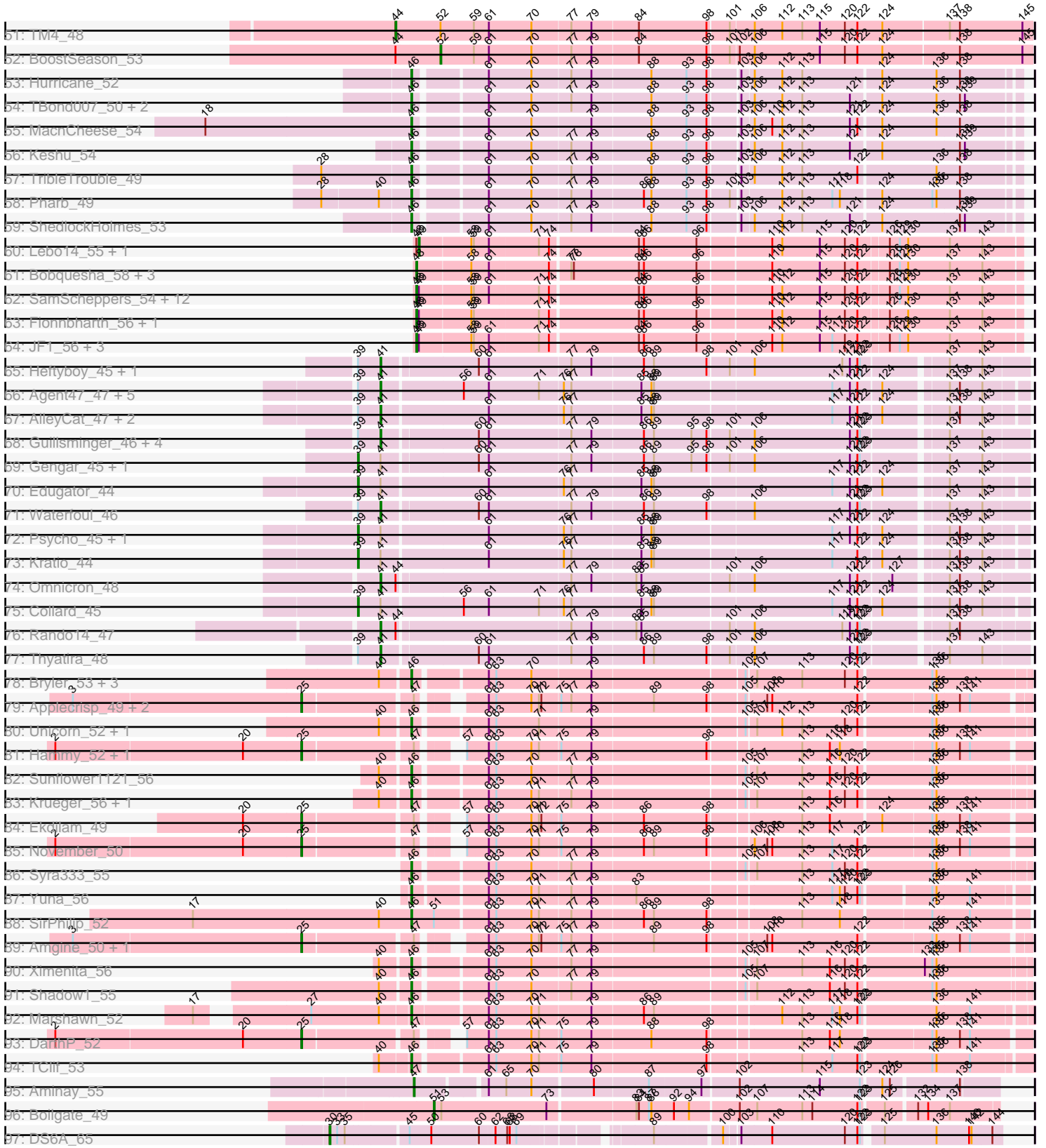


Pham 306139



Pham 306139



Note: Tracks are now grouped by subcluster and scaled. Switching in subcluster is indicated by changes in track color. Track scale is now set by default to display the region 30 bp upstream of start 1 to 30 bp downstream of the last possible start. If this default region is judged to be packed too tightly with annotated starts, the track will be further scaled to only show that region of the ORF with annotated starts. This action will be indicated by adding "Zoomed" to the title. For starts, yellow indicates the location of called starts comprised solely of Glimmer/GeneMark auto-annotations, green indicates the location of called starts with at least 1 manual gene annotation.

Pham 306139 Report

This analysis was run 06/27/26 on database version 652.

Pham number 306139 has 223 members, 16 are drafts.

Phages represented in each track:

- Track 1 : MalagasyRose_51
- Track 2 : Nergal_47
- Track 3 : Dole_52, Illumine_52, Devera_54
- Track 4 : Llorens_49, Padfoot_49, Dalmuri_49, Topper_49, Hyperbowlee_49, CREW_49, AlishaPH_49, Rosmarinus_49, Boiii_49, BaghaKamala_48, BGIlluviae_49, Asayake_49, Joy99_49, Zavala_51, Blizzard_49, Belladonna_49, Adephagia_49, Piatt_49, BEEST_49, Homura_49, Inky_49, Capricorn_49, Lunahalos_49, ShiaSurprise_50, Durfee_49, Peel_49, Jarvi_49, Spock_49, Twitch_49, CaseJules_51
- Track 5 : Scarlett_54
- Track 6 : ActinUp_49, HedwigODU_49, Zabiza_44
- Track 7 : Pisa4_43, Pisa1_49
- Track 8 : BarrelRoll_49, Rapunzel97_50, Tiri_50, Geraldini_52, TruffulaTree_49, Jayhawk_50, Slimphazie_49, CheetoDust_48, Bern_50, Deby_49, Veliki_50, Atiba_50, MeaningOfLife_50, YoureAdopted_48, CrimD_49, Tachez_49
- Track 9 : Nutello_45, Amelie_45, Nikao_48, SgtBeansprout_45, LilPharaoh_45, Binglebops_45, Torres_48, Enkosi_47, Trice_45, Teejan_47, Mdavu_46
- Track 10 : Peanam_52, McMater_52, Niklas_52, Richo_52, Dartin_52
- Track 11 : Megsy_51
- Track 12 : Jeckyll_49, CallaLilly_49
- Track 13 : Curiosium_51
- Track 14 : Murucutumbu_50
- Track 15 : Efra2_52
- Track 16 : MacKat_44, Clipper_52
- Track 17 : Anma_51, Urkel_50, SamuelLPlaqson_50, TiniBug_50, DrHayes_50
- Track 18 : Apocalypse_52
- Track 19 : Validus_54
- Track 20 : LaterM_50
- Track 21 : Bella96_50, DartGoblin_51
- Track 22 : Oscar_54
- Track 23 : Chris_52
- Track 24 : Chavito_53
- Track 25 : LindNT_48, Prithvi_50, TreyKay_50
- Track 26 : QuincyRose_48, Ganymede_50
- Track 27 : Ramen_50
- Track 28 : LeMond_54
- Track 29 : Nibb_52

- Track 30 : Adonis_49
- Track 31 : Shaobing_52
- Track 32 : Ageofdapage_51
- Track 33 : Angelica_49
- Track 34 : Mynx_50
- Track 35 : TingHuaYa_50
- Track 36 : Pokerus_48
- Track 37 : Beezoo_51
- Track 38 : JAWS_49
- Track 39 : MarkPhew_53
- Track 40 : KiSi_54
- Track 41 : TaiwanKao_51
- Track 42 : Padpat_51, Emerson_50
- Track 43 : Yunkel11_52, Guanica15_52
- Track 44 : Anaya_51
- Track 45 : Sulley_49
- Track 46 : Stinson_50
- Track 47 : LastHope_52
- Track 48 : DismalFunk_53, Findley_53, DismalStressor_53, Milly_53, Strobilo_53, Marcoliusprime_53
- Track 49 : ZoeJ_52
- Track 50 : Doughnut_53, Mufasa_53
- Track 51 : TM4_48
- Track 52 : BoostSeason_53
- Track 53 : Hurricane_52
- Track 54 : TBond007_50, Lea83_52, Pixie_51
- Track 55 : MacnCheese_54
- Track 56 : Keshu_54
- Track 57 : TribbleTrouble_49
- Track 58 : Pharb_49
- Track 59 : ShedlockHolmes_53
- Track 60 : Lebo14_55, DanSyl44_59
- Track 61 : Bobquesha_58, Patt_53, Reptar3000_54, MissDaisy_54
- Track 62 : SamScheppers_54, Cheetobro_56, Taquito_56, Juliette_58, YasnayaPolyana_56, Slarp_56, Wintermute_56, OmniCritical_55, Malthus_57, Mitti_56, Qhanda_58, Kraw_56, Chancellor_56
- Track 63 : Fionnbharth_56, Eponine_58
- Track 64 : JF1_56, Ruthiejr_57, Y10_55, Y2_55
- Track 65 : Heftyboy_45, SoSeph_45
- Track 66 : Agent47_47, BananenDer11_47, LilDirt_46, ViviJ_46, InvictusManeo_45, DoubleChamp_44
- Track 67 : AlleyCat_47, Neighly_47, Dadosky_47
- Track 68 : Guillsminger_46, Leston_45, Feyre_46, Paola_45, Miryou_48
- Track 69 : Gengar_45, OkiRoe_45
- Track 70 : Edugator_44
- Track 71 : Waterfoul_46
- Track 72 : Psycho_45, Larva_46
- Track 73 : Kratio_44
- Track 74 : Omnicron_48
- Track 75 : Collard_45
- Track 76 : Rando14_47
- Track 77 : Thyatira_48
- Track 78 : Bryler_53, Tierra_53, Phrank_53, Cain_53

- Track 79 : Applecrisp_49, Ellie_48, Fefferhead_50
- Track 80 : Unicorn_52, PhelpsODU_52
- Track 81 : Hammy_52, Amohnition_52
- Track 82 : Sunflower1121_56
- Track 83 : Krueger_56, Tigress9_55
- Track 84 : Ekdilam_49
- Track 85 : November_50
- Track 86 : Syra333_55
- Track 87 : Yuna_56
- Track 88 : SirPhilip_52
- Track 89 : Amgine_50, Lavahound_49
- Track 90 : Ximenita_56
- Track 91 : Shadow1_55
- Track 92 : Marshawn_52
- Track 93 : DarthP_52
- Track 94 : TClif_53
- Track 95 : Aminay_55
- Track 96 : Boilgate_49
- Track 97 : DS6A_65

Summary of Final Annotations (See graph section above for start numbers):

The start number called the most often in the published annotations is 25, it was called in 111 of the 207 non-draft genes in the pham.

Genes that call this "Most Annotated" start:

• ActinUp_49, Adephegia_49, Adonis_49, Ageofdapage_51, AlishaPH_49, Amelie_45, Amgine_50, Amohnition_52, Anaya_51, Angelica_49, Anma_51, Apocalypse_52, Applecrisp_49, Asayake_49, Atiba_50, BEEST_49, BGIlluviae_49, BaghaKamala_48, BarrelRoll_49, Beezoo_51, Bella96_50, Belladonna_49, Bern_50, Biglebops_45, Blizzard_49, Boiiii_49, CREW_49, CallaLilly_49, Capricorn_49, CaseJules_51, Chavito_53, CheetoDust_48, Clipper_52, CrimD_49, Curiosium_51, Dalmuri_49, DartGoblin_51, DarthP_52, Dartin_52, Deby_49, Devera_54, Dole_52, DrHayes_50, Durfee_49, Efra2_52, Ekdilam_49, Ellie_48, Emerson_50, Enkosi_47, Fefferhead_50, Ganymede_50, Geraldini_52, Guanica15_52, Hammy_52, HedwigODU_49, Homura_49, Hyperbowlee_49, Illumine_52, Inky_49, JAWS_49, Jarvi_49, Jayhawk_50, Jeckyll_49, Joy99_49, LaterM_50, Lavahound_49, LilPharaoh_45, LindNT_48, Llorens_49, Lunahalos_49, MacKat_44, McMater_52, Mdavu_46, MeaningOfLife_50, Megsy_51, Murucutumbu_50, Mynx_50, Nikao_48, Niklas_52, November_50, Nutello_45, Padfoot_49, Padpat_51, Peanam_52, Peel_49, Piatt_49, Pisa1_49, Pisa4_43, Pokerus_48, Prithvi_50, QuincyRose_48, Ramen_50, Rapunzel97_50, Richo_52, Rosmarinus_49, SamuelLPlaqson_50, SgtBeansprout_45, Shaobing_52, ShiaSurprise_50, Slimphazie_49, Spock_49, Stinson_50, Sulley_49, Tachez_49, TaiwanKao_51, Teejan_47, TingHuaYa_50, TiniBug_50, Tiri_50, Topper_49, Torres_48, TreyKay_50, Trice_45, TruffulaTree_49, Twitch_49, Urkel_50, Validus_54, Veliki_50, YoureAdopted_48, Yunkel11_52, Zabiza_44, Zavala_51,

Genes that have the "Most Annotated" start but do not call it:

-

Genes that do not have the "Most Annotated" start:

- Agent47_47, AlleyCat_47, Aminay_55, BananenDer11_47, Bobquesha_58, Boilgate_49, BoostSeason_53, Bryler_53, Cain_53, Chancellor_56, Cheetobro_56, Chris_52, Collard_45, DS6A_65, Dadosky_47, DanSyl44_59, DismalFunk_53, DismalStressor_53, DoubleChamp_44, Doughnut_53, Edugator_44, Eponine_58, Feyre_46, Findley_53, Fionnbharth_56, Gengar_45, Guillsminger_46, Heftyboy_45, Hurricane_52, InvictusManeo_45, JF1_56, Juliette_58, Keshu_54, KiSi_54, Kratio_44, Kraw_56, Krueger_56, Larva_46, LastHope_52, LeMond_54, Lea83_52, Lebo14_55, Leston_45, LilDirt_46, MacnCheese_54, MalagasyRose_51, Malthus_57, Marcoliusprime_53, MarkPhew_53, Marshawn_52, Milly_53, Miryou_48, MissDaisy_54, Mitti_56, Mufasa_53, Neighly_47, Nergal_47, Nibb_52, OkiRoe_45, OmniCritical_55, Omnicron_48, Oscar_54, Paola_45, Patt_53, Pharb_49, PhelpsODU_52, Phrank_53, Pixie_51, Psycho_45, Qhanda_58, Rando14_47, Reptar3000_54, Ruthiejr_57, SamScheppers_54, Scarlett_54, Shadow1_55, ShedlockHolmes_53, SirPhilip_52, Slarp_56, SoSeph_45, Strobilo_53, Sunflower1121_56, Syra333_55, TBond007_50, TClif_53, TM4_48, Taquito_56, Thyatira_48, Tierra_53, Tigress9_55, TribbleTrouble_49, Unicorn_52, ViviJ_46, Waterfoul_46, Wintermute_56, Ximenita_56, Y10_55, Y2_55, YasnayaPolyana_56, Yuna_56, ZoeJ_52,

Summary by start number:

Start 25:

- Found in 122 of 223 (54.7%) of genes in pham
- Manual Annotations of this start: 111 of 207
- Called 100.0% of time when present
- Phage (with cluster) where this start called: ActinUp_49 (K1), Adephagia_49 (K1), Adonis_49 (K1), Ageofdapage_51 (K1), AlishaPH_49 (K1), Amelie_45 (K1), Amgine_50 (K6), Amohntion_52 (K6), Anaya_51 (K1), Angelica_49 (K1), Anma_51 (K1), Apocalypse_52 (K1), Applecrisp_49 (K6), Asayake_49 (K1), Atiba_50 (K1), BEEST_49 (K1), BGlluviae_49 (K1), BaghaKamala_48 (K1), BarrelRoll_49 (K1), Beezoo_51 (K1), Bella96_50 (K1), Belladonna_49 (K1), Bern_50 (K1), Biglebops_45 (K1), Blizzard_49 (K1), Boiiii_49 (K1), CREW_49 (K1), CallaLilly_49 (K1), Capricorn_49 (K1), CaseJules_51 (K1), Chavito_53 (K1), CheetoDust_48 (K1), Clipper_52 (K1), CrimD_49 (K1), Curiosium_51 (K1), Dalmuri_49 (K1), DartGoblin_51 (K1), DARTH_52 (K6), Dartin_52 (K1), Deby_49 (K1), Devera_54 (K1), Dole_52 (K1), DrHayes_50 (K1), Durfee_49 (K1), Efra2_52 (K1), Ekdilam_49 (K6), Ellie_48 (K6), Emerson_50 (K1), Enkosi_47 (K1), Fefferhead_50 (K6), Ganymede_50 (K1), Geraldini_52 (K1), Guanica15_52 (K1), Hammy_52 (K6), HedwigODU_49 (K1), Homura_49 (K1), Hyperbowlee_49 (K1), Illumine_52 (K1), Inky_49 (K1), JAWS_49 (K1), Jarvi_49 (K1), Jayhawk_50 (K1), Jeckyll_49 (K1), Joy99_49 (K1), LaterM_50 (K1), Lavahound_49 (K6), LilPharaoh_45 (K1), LindNT_48 (K1), Llorens_49 (K1), Lunahalos_49 (K1), MacKat_44 (K1), McMater_52 (K1), Mdavu_46 (K1), MeaningOfLife_50 (K1), Megsy_51 (K1), Murucutumbu_50 (K1), Mynx_50 (K1), Nikao_48 (K1), Niklas_52 (K1), November_50 (K6), Nutello_45 (K1), Padfoot_49 (K1), Padpat_51 (K1), Peanam_52 (K1), Peel_49 (K1), Piatt_49 (K1), Pisa1_49 (K1), Pisa4_43 (K1), Pokerus_48 (K1), Prithvi_50 (K1), QuincyRose_48 (K1), Ramen_50 (K1), Rapunzel97_50 (K1), Richo_52 (K1), Rosmarinus_49 (K1), SamuelLPlaqson_50 (K1), SgtBeansprout_45 (K1), Shaobing_52 (K1), ShiaSurprise_50 (K1), Slimphazie_49 (K1), Spock_49 (K1), Stinson_50 (K1), Sulley_49 (K1), Tachez_49 (K1), TaiwanKao_51 (K1), Teejan_47 (K1), TingHuaYa_50 (K1), TiniBug_50 (K1), Tiri_50 (K1), Topper_49 (K1), Torres_48 (K1), TreyKay_50 (K1), Trice_45 (K1),

TruffulaTree_49 (K1), Twitch_49 (K1), Urkel_50 (K1), Validus_54 (K1), Veliki_50 (K1), YoureAdopted_48 (K1), Yunkel11_52 (K1), Zabiza_44 (K1), Zavala_51 (K1),

Start 26:

- Found in 1 of 223 (0.4%) of genes in pham
- Manual Annotations of this start: 1 of 207
- Called 100.0% of time when present
- Phage (with cluster) where this start called: LastHope_52 (K1),

Start 30:

- Found in 1 of 223 (0.4%) of genes in pham
- Manual Annotations of this start: 1 of 207
- Called 100.0% of time when present
- Phage (with cluster) where this start called: DS6A_65 (singleton),

Start 39:

- Found in 25 of 223 (11.2%) of genes in pham
- Manual Annotations of this start: 7 of 207
- Called 28.0% of time when present
- Phage (with cluster) where this start called: Collard_45 (K5), Edugator_44 (K5), Gengar_45 (K5), Kratio_44 (K5), Larva_46 (K5), OkiRoe_45 (K5), Psycho_45 (K5),

Start 41:

- Found in 27 of 223 (12.1%) of genes in pham
- Manual Annotations of this start: 18 of 207
- Called 74.1% of time when present
- Phage (with cluster) where this start called: Agent47_47 (K5), AlleyCat_47 (K5), BananenDer11_47 (K5), Dadosky_47 (K5), DoubleChamp_44 (K5), Feyre_46 (K5), Guillsminger_46 (K5), Heftyboy_45 (K5), InvictusManeo_45 (K5), Leston_45 (K5), LilDirt_46 (K5), Miryou_48 (K5), Neighly_47 (K3), Omnicron_48 (K5), Paola_45 (K5), Rando14_47 (K5), SoSeph_45 (K5), Thyatira_48 (K5), ViviJ_46 (K5), Waterfoul_46 (K5),

Start 42:

- Found in 1 of 223 (0.4%) of genes in pham
- Manual Annotations of this start: 1 of 207
- Called 100.0% of time when present
- Phage (with cluster) where this start called: Nergal_47 (AG),

Start 43:

- Found in 1 of 223 (0.4%) of genes in pham
- Manual Annotations of this start: 1 of 207
- Called 100.0% of time when present
- Phage (with cluster) where this start called: MalagasyRose_51 (AG),

Start 44:

- Found in 14 of 223 (6.3%) of genes in pham
- Manual Annotations of this start: 10 of 207
- Called 71.4% of time when present
- Phage (with cluster) where this start called: DismalFunk_53 (K2), DismalStressor_53 (K2), Doughnut_53 (K2), Findley_53 (K2), Marcoliusprime_53 (K2), Milly_53 (K2), Mufasa_53 (K2), Strobilo_53 (K2), TM4_48 (K2), ZoeJ_52 (K2),

Start 46:

- Found in 33 of 223 (14.8%) of genes in pham
- Manual Annotations of this start: 32 of 207
- Called 97.0% of time when present
- Phage (with cluster) where this start called: Bryler_53 (K6), Cain_53 (K6), Chris_52 (K1), Hurricane_52 (K3), Keshu_54 (K3), KiSi_54 (K1), Krueger_56 (K6), LeMond_54 (K1), Lea83_52 (K3), MacnCheese_54 (K3), MarkPhew_53 (K1), Marshawn_52 (K6), Nibb_52 (K1), Oscar_54 (K1), Pharb_49 (K3), PhelpsODU_52 (K6), Phrank_53 (K6), Pixie_51 (K3), Scarlett_54 (K1), Shadow1_55 (K6), ShedlockHolmes_53 (K3), SirPhilip_52 (K6), Sunflower1121_56 (K6), Syra333_55 (K6), TBond007_50 (K3), TClif_53 (K6), Tierra_53 (K6), Tigress9_55 (K6), TribbleTrouble_49 (K3), Unicorn_52 (K6), Ximenita_56 (K6), Yuna_56 (K6),

Start 47:

- Found in 123 of 223 (55.2%) of genes in pham
- Manual Annotations of this start: 1 of 207
- Called 0.8% of time when present
- Phage (with cluster) where this start called: Aminay_55 (K7),

Start 48:

- Found in 25 of 223 (11.2%) of genes in pham
- Manual Annotations of this start: 21 of 207
- Called 92.0% of time when present
- Phage (with cluster) where this start called: Bobquesha_58 (K4), Chancellor_56 (K4), Cheetobro_56 (K4), Eponine_58 (K4), Fionnbharth_56 (K4), JF1_56 (K4), Juliette_58 (K4), Kraw_56 (K4), Malthus_57 (K4), MissDaisy_54 (K4), Mitti_56 (K4), OmniCritical_55 (K4), Patt_53 (K4), Qhanda_58 (K4), Reptar3000_54 (K4), Ruthiejr_57 (K4), SamScheppers_54 (K4), Slarp_56 (K4), Taquito_56 (K4), Wintermute_56 (K4), Y10_55 (K4), Y2_55 (K4), YasnayaPolyana_56 (K4),

Start 49:

- Found in 21 of 223 (9.4%) of genes in pham
- Manual Annotations of this start: 1 of 207
- Called 9.5% of time when present
- Phage (with cluster) where this start called: DanSyl44_59 (K4), Lebo14_55 (K4),

Start 51:

- Found in 2 of 223 (0.9%) of genes in pham
- Manual Annotations of this start: 1 of 207
- Called 50.0% of time when present
- Phage (with cluster) where this start called: Boilgate_49 (K8),

Start 52:

- Found in 11 of 223 (4.9%) of genes in pham
- Manual Annotations of this start: 1 of 207
- Called 9.1% of time when present
- Phage (with cluster) where this start called: BoostSeason_53 (K2),

Summary by clusters:

There are 10 clusters represented in this pham: singleton, AG, K3, K2, K1, K7, K6, K5, K4, K8,

Info for manual annotations of cluster AG:

- Start number 42 was manually annotated 1 time for cluster AG.
- Start number 43 was manually annotated 1 time for cluster AG.

Info for manual annotations of cluster K1:

- Start number 25 was manually annotated 101 times for cluster K1.
- Start number 26 was manually annotated 1 time for cluster K1.
- Start number 46 was manually annotated 7 times for cluster K1.

Info for manual annotations of cluster K2:

- Start number 44 was manually annotated 10 times for cluster K2.
- Start number 52 was manually annotated 1 time for cluster K2.

Info for manual annotations of cluster K3:

- Start number 46 was manually annotated 9 times for cluster K3.

Info for manual annotations of cluster K4:

- Start number 48 was manually annotated 21 times for cluster K4.
- Start number 49 was manually annotated 1 time for cluster K4.

Info for manual annotations of cluster K5:

- Start number 39 was manually annotated 7 times for cluster K5.
- Start number 41 was manually annotated 18 times for cluster K5.

Info for manual annotations of cluster K6:

- Start number 25 was manually annotated 10 times for cluster K6.
- Start number 46 was manually annotated 16 times for cluster K6.

Info for manual annotations of cluster K7:

- Start number 47 was manually annotated 1 time for cluster K7.

Info for manual annotations of cluster K8:

- Start number 51 was manually annotated 1 time for cluster K8.

Gene Information:

Gene: ActinUp_49 Start: 36568, Stop: 37359, Start Num: 25

Candidate Starts for ActinUp_49:

(Start: 25 @36568 has 111 MA's), (32, 36604), (Start: 47 @36691 has 1 MA's), (61, 36745), (63, 36754), (70, 36796), (71, 36805), (78, 36844), (79, 36865), (87, 36931), (89, 36937), (106, 37045), (113, 37102), (122, 37168), (135, 37252), (136, 37255), (141, 37294), (145, 37348),

Gene: Adephagia_49 Start: 36565, Stop: 37356, Start Num: 25

Candidate Starts for Adephagia_49:

(Start: 25 @36565 has 111 MA's), (32, 36601), (Start: 47 @36688 has 1 MA's), (61, 36742), (63, 36751), (70, 36793), (71, 36802), (78, 36841), (79, 36862), (87, 36928), (89, 36934), (106, 37042), (113, 37099), (122, 37165), (136, 37252), (138, 37279), (141, 37291), (145, 37345),

Gene: Adonis_49 Start: 36863, Stop: 37654, Start Num: 25

Candidate Starts for Adonis_49:

(Start: 25 @36863 has 111 MA's), (32, 36899), (38, 36926), (Start: 47 @36986 has 1 MA's), (63, 37049), (70, 37091), (71, 37100), (78, 37139), (79, 37160), (89, 37232), (106, 37340), (113, 37397), (122, 37463), (135, 37547), (136, 37550), (138, 37577), (141, 37589), (145, 37643),

Gene: Agent47_47 Start: 35656, Stop: 36384, Start Num: 41

Candidate Starts for Agent47_47:

(Start: 39 @35629 has 7 MA's), (Start: 41 @35656 has 18 MA's), (56, 35749), (61, 35779), (71, 35839), (76, 35866), (77, 35875), (85, 35956), (88, 35968), (89, 35971), (117, 36178), (121, 36199), (122, 36208), (124, 36232), (137, 36298), (138, 36310), (143, 36337),

Gene: Ageofdapage_51 Start: 37548, Stop: 38339, Start Num: 25

Candidate Starts for Ageofdapage_51:

(Start: 25 @37548 has 111 MA's), (32, 37584), (Start: 47 @37671 has 1 MA's), (61, 37725), (63, 37734), (70, 37776), (71, 37785), (78, 37824), (79, 37845), (87, 37911), (89, 37917), (106, 38025), (113, 38082), (122, 38148), (125, 38175), (136, 38235), (138, 38262), (141, 38274),

Gene: AlishaPH_49 Start: 36838, Stop: 37629, Start Num: 25

Candidate Starts for AlishaPH_49:

(Start: 25 @36838 has 111 MA's), (32, 36874), (Start: 47 @36961 has 1 MA's), (61, 37015), (63, 37024), (70, 37066), (71, 37075), (78, 37114), (79, 37135), (87, 37201), (89, 37207), (106, 37315), (113, 37372), (122, 37438), (136, 37525), (138, 37552), (141, 37564), (145, 37618),

Gene: AlleyCat_47 Start: 35510, Stop: 36238, Start Num: 41

Candidate Starts for AlleyCat_47:

(Start: 39 @35483 has 7 MA's), (Start: 41 @35510 has 18 MA's), (61, 35633), (76, 35720), (77, 35729), (85, 35810), (88, 35822), (89, 35825), (117, 36032), (121, 36053), (122, 36062), (124, 36086), (137, 36152), (138, 36164), (143, 36191),

Gene: Amelie_45 Start: 36225, Stop: 37043, Start Num: 25

Candidate Starts for Amelie_45:

(Start: 25 @36225 has 111 MA's), (Start: 47 @36348 has 1 MA's), (61, 36423), (63, 36432), (70, 36474), (75, 36510), (77, 36522), (79, 36546), (87, 36612), (98, 36681), (99, 36684), (113, 36783), (120, 36834), (122, 36849), (124, 36873), (125, 36876), (135, 36933), (136, 36936),

Gene: Amgine_50 Start: 37771, Stop: 38556, Start Num: 25

Candidate Starts for Amgine_50:

(3, 37501), (Start: 25 @37771 has 111 MA's), (Start: 47 @37894 has 1 MA's), (61, 37948), (63, 37957), (70, 37999), (71, 38008), (72, 38011), (75, 38032), (77, 38044), (79, 38068), (89, 38140), (98, 38203), (108, 38263), (110, 38269), (122, 38371), (135, 38452), (136, 38455), (138, 38482), (141, 38494),

Gene: Aminay_55 Start: 38521, Stop: 39168, Start Num: 47

Candidate Starts for Aminay_55:

(Start: 47 @38521 has 1 MA's), (61, 38596), (65, 38617), (70, 38647), (80, 38716), (87, 38779), (97, 38836), (102, 38875), (115, 38971), (123, 39019), (124, 39040), (126, 39049), (138, 39124),

Gene: Amohndition_52 Start: 37775, Stop: 38563, Start Num: 25

Candidate Starts for Amohndition_52:

(2, 37484), (20, 37706), (Start: 25 @37775 has 111 MA's), (Start: 47 @37898 has 1 MA's), (57, 37928), (61, 37952), (63, 37961), (70, 38003), (71, 38012), (75, 38036), (79, 38072), (98, 38207), (113, 38309), (116, 38342), (118, 38354), (135, 38456), (136, 38459), (138, 38486), (141, 38498),

Gene: Anaya_51 Start: 37165, Stop: 37956, Start Num: 25

Candidate Starts for Anaya_51:

(Start: 25 @37165 has 111 MA's), (32, 37201), (38, 37228), (Start: 47 @37288 has 1 MA's), (61, 37342), (63, 37351), (70, 37393), (71, 37402), (72, 37405), (78, 37441), (79, 37462), (89, 37534), (106, 37642), (113, 37699), (122, 37765), (135, 37849), (136, 37852), (138, 37879), (141, 37891), (145, 37945),

Gene: Angelica_49 Start: 36795, Stop: 37586, Start Num: 25

Candidate Starts for Angelica_49:

(Start: 25 @36795 has 111 MA's), (32, 36831), (Start: 47 @36918 has 1 MA's), (63, 36981), (70, 37023), (71, 37032), (78, 37071), (79, 37092), (87, 37158), (89, 37164), (106, 37272), (113, 37329), (122, 37395), (135, 37479), (136, 37482), (138, 37509), (141, 37521), (145, 37575),

Gene: Anma_51 Start: 37454, Stop: 38245, Start Num: 25

Candidate Starts for Anma_51:

(Start: 25 @37454 has 111 MA's), (32, 37490), (Start: 47 @37577 has 1 MA's), (61, 37631), (63, 37640), (70, 37682), (71, 37691), (72, 37694), (75, 37715), (79, 37751), (87, 37817), (89, 37823), (106, 37931), (113, 37988), (122, 38054), (125, 38081), (135, 38138), (136, 38141), (138, 38168), (141, 38180), (145, 38234),

Gene: Apocalypse_52 Start: 37574, Stop: 38365, Start Num: 25

Candidate Starts for Apocalypse_52:

(Start: 25 @37574 has 111 MA's), (32, 37610), (Start: 47 @37697 has 1 MA's), (61, 37751), (63, 37760), (67, 37775), (70, 37802), (71, 37811), (75, 37835), (78, 37850), (79, 37871), (87, 37937), (89, 37943), (106, 38051), (113, 38108), (122, 38174), (135, 38258), (136, 38261), (138, 38288), (141, 38300), (145, 38354),

Gene: Applecrisp_49 Start: 37267, Stop: 38052, Start Num: 25

Candidate Starts for Applecrisp_49:

(3, 36997), (Start: 25 @37267 has 111 MA's), (Start: 47 @37390 has 1 MA's), (61, 37444), (63, 37453), (70, 37495), (71, 37504), (72, 37507), (75, 37528), (77, 37540), (79, 37564), (89, 37636), (98, 37699), (105, 37738), (108, 37759), (110, 37765), (122, 37867), (135, 37948), (136, 37951), (138, 37978), (141, 37990),

Gene: Asayake_49 Start: 36880, Stop: 37671, Start Num: 25

Candidate Starts for Asayake_49:

(Start: 25 @36880 has 111 MA's), (32, 36916), (Start: 47 @37003 has 1 MA's), (61, 37057), (63, 37066), (70, 37108), (71, 37117), (78, 37156), (79, 37177), (87, 37243), (89, 37249), (106, 37357), (113, 37414), (122, 37480), (136, 37567), (138, 37594), (141, 37606), (145, 37660),

Gene: Atiba_50 Start: 36528, Stop: 37319, Start Num: 25

Candidate Starts for Atiba_50:

(Start: 25 @36528 has 111 MA's), (32, 36564), (Start: 47 @36651 has 1 MA's), (61, 36705), (63, 36714), (70, 36756), (71, 36765), (78, 36804), (79, 36825), (87, 36891), (89, 36897), (106, 37005), (113, 37062), (122, 37128), (135, 37212), (136, 37215), (138, 37242), (141, 37254), (145, 37308),

Gene: BEEST_49 Start: 36880, Stop: 37671, Start Num: 25

Candidate Starts for BEEST_49:

(Start: 25 @36880 has 111 MA's), (32, 36916), (Start: 47 @37003 has 1 MA's), (61, 37057), (63, 37066), (70, 37108), (71, 37117), (78, 37156), (79, 37177), (87, 37243), (89, 37249), (106, 37357), (113, 37414), (122, 37480), (136, 37567), (138, 37594), (141, 37606), (145, 37660),

Gene: BGlluviae_49 Start: 36683, Stop: 37474, Start Num: 25

Candidate Starts for BGlluviae_49:

(Start: 25 @36683 has 111 MA's), (32, 36719), (Start: 47 @36806 has 1 MA's), (61, 36860), (63, 36869), (70, 36911), (71, 36920), (78, 36959), (79, 36980), (87, 37046), (89, 37052), (106, 37160), (113, 37217), (122, 37283), (136, 37370), (138, 37397), (141, 37409), (145, 37463),

Gene: BaghaKamala_48 Start: 36003, Stop: 36794, Start Num: 25

Candidate Starts for BaghaKamala_48:

(Start: 25 @36003 has 111 MA's), (32, 36039), (Start: 47 @36126 has 1 MA's), (61, 36180), (63, 36189), (70, 36231), (71, 36240), (78, 36279), (79, 36300), (87, 36366), (89, 36372), (106, 36480), (113, 36537), (122, 36603), (136, 36690), (138, 36717), (141, 36729), (145, 36783),

Gene: BananenDer11_47 Start: 35617, Stop: 36345, Start Num: 41

Candidate Starts for BananenDer11_47:

(Start: 39 @35590 has 7 MA's), (Start: 41 @35617 has 18 MA's), (56, 35710), (61, 35740), (71, 35800), (76, 35827), (77, 35836), (85, 35917), (88, 35929), (89, 35932), (117, 36139), (121, 36160), (122, 36169), (124, 36193), (137, 36259), (138, 36271), (143, 36298),

Gene: BarrelRoll_49 Start: 36551, Stop: 37342, Start Num: 25

Candidate Starts for BarrelRoll_49:

(Start: 25 @36551 has 111 MA's), (32, 36587), (Start: 47 @36674 has 1 MA's), (61, 36728), (63, 36737), (70, 36779), (71, 36788), (78, 36827), (79, 36848), (87, 36914), (89, 36920), (106, 37028), (113, 37085), (122, 37151), (135, 37235), (136, 37238), (138, 37265), (141, 37277), (145, 37331),

Gene: Beezoo_51 Start: 37526, Stop: 38317, Start Num: 25

Candidate Starts for Beezoo_51:

(Start: 25 @37526 has 111 MA's), (32, 37562), (Start: 47 @37649 has 1 MA's), (61, 37703), (63, 37712), (70, 37754), (71, 37763), (78, 37802), (79, 37823), (87, 37889), (89, 37895), (106, 38003), (113, 38060), (122, 38126), (131, 38186), (135, 38210), (136, 38213), (138, 38240), (141, 38252), (145, 38306),

Gene: Bella96_50 Start: 37392, Stop: 38183, Start Num: 25

Candidate Starts for Bella96_50:

(Start: 25 @37392 has 111 MA's), (32, 37428), (Start: 47 @37515 has 1 MA's), (61, 37569), (63, 37578), (70, 37620), (71, 37629), (72, 37632), (75, 37653), (77, 37665), (79, 37689), (87, 37755), (89, 37761), (106, 37869), (113, 37926), (122, 37992), (125, 38019), (136, 38079), (138, 38106), (141, 38118), (145, 38172),

Gene: Belladonna_49 Start: 36683, Stop: 37474, Start Num: 25

Candidate Starts for Belladonna_49:

(Start: 25 @36683 has 111 MA's), (32, 36719), (Start: 47 @36806 has 1 MA's), (61, 36860), (63, 36869), (70, 36911), (71, 36920), (78, 36959), (79, 36980), (87, 37046), (89, 37052), (106, 37160), (113, 37217), (122, 37283), (136, 37370), (138, 37397), (141, 37409), (145, 37463),

Gene: Bern_50 Start: 35598, Stop: 36389, Start Num: 25

Candidate Starts for Bern_50:

(Start: 25 @35598 has 111 MA's), (32, 35634), (Start: 47 @35721 has 1 MA's), (61, 35775), (63, 35784), (70, 35826), (71, 35835), (78, 35874), (79, 35895), (87, 35961), (89, 35967), (106, 36075), (113, 36132), (122, 36198), (135, 36282), (136, 36285), (138, 36312), (141, 36324), (145, 36378),

Gene: Biglebops_45 Start: 36225, Stop: 37043, Start Num: 25

Candidate Starts for Biglebops_45:

(Start: 25 @36225 has 111 MA's), (Start: 47 @36348 has 1 MA's), (61, 36423), (63, 36432), (70, 36474), (75, 36510), (77, 36522), (79, 36546), (87, 36612), (98, 36681), (99, 36684), (113, 36783), (120, 36834), (122, 36849), (124, 36873), (125, 36876), (135, 36933), (136, 36936),

Gene: Blizzard_49 Start: 36880, Stop: 37671, Start Num: 25

Candidate Starts for Blizzard_49:

(Start: 25 @36880 has 111 MA's), (32, 36916), (Start: 47 @37003 has 1 MA's), (61, 37057), (63, 37066), (70, 37108), (71, 37117), (78, 37156), (79, 37177), (87, 37243), (89, 37249), (106, 37357), (113, 37414), (122, 37480), (136, 37567), (138, 37594), (141, 37606), (145, 37660),

Gene: Bobquesha_58 Start: 37721, Stop: 38413, Start Num: 48

Candidate Starts for Bobquesha_58:

(Start: 48 @37721 has 21 MA's), (58, 37784), (61, 37805), (74, 37874), (77, 37895), (78, 37898), (84, 37976), (86, 37982), (96, 38045), (110, 38126), (115, 38183), (120, 38213), (122, 38228), (126, 38261), (129, 38273), (130, 38282), (137, 38330), (143, 38369),

Gene: Boiiii_49 Start: 36882, Stop: 37673, Start Num: 25

Candidate Starts for Boiiii_49:

(Start: 25 @36882 has 111 MA's), (32, 36918), (Start: 47 @37005 has 1 MA's), (61, 37059), (63, 37068), (70, 37110), (71, 37119), (78, 37158), (79, 37179), (87, 37245), (89, 37251), (106, 37359), (113, 37416), (122, 37482), (136, 37569), (138, 37596), (141, 37608), (145, 37662),

Gene: Boilgate_49 Start: 37862, Stop: 38506, Start Num: 51

Candidate Starts for Boilgate_49:

(Start: 51 @37862 has 1 MA's), (53, 37871), (73, 37997), (83, 38096), (84, 38099), (87, 38111), (88, 38114), (92, 38141), (94, 38159), (102, 38213), (107, 38234), (113, 38288), (114, 38300), (122, 38354), (123, 38357), (125, 38381), (132, 38414), (134, 38426), (137, 38450),

Gene: BoostSeason_53 Start: 38442, Stop: 39131, Start Num: 52

Candidate Starts for BoostSeason_53:

(Start: 44 @38391 has 10 MA's), (Start: 52 @38442 has 1 MA's), (59, 38481), (61, 38499), (70, 38550), (77, 38595), (79, 38619), (84, 38673), (98, 38754), (101, 38778), (102, 38787), (106, 38805), (115, 38883), (120, 38913), (122, 38928), (124, 38958), (138, 39045), (145, 39120),

Gene: Bryler_53 Start: 36462, Stop: 37157, Start Num: 46

Candidate Starts for Bryler_53:

(40, 36429), (Start: 46 @36462 has 32 MA's), (61, 36540), (63, 36549), (70, 36591), (79, 36660), (105, 36834), (107, 36843), (113, 36897), (120, 36948), (122, 36963), (135, 37047), (136, 37050),

Gene: CREW_49 Start: 36683, Stop: 37474, Start Num: 25

Candidate Starts for CREW_49:

(Start: 25 @36683 has 111 MA's), (32, 36719), (Start: 47 @36806 has 1 MA's), (61, 36860), (63, 36869), (70, 36911), (71, 36920), (78, 36959), (79, 36980), (87, 37046), (89, 37052), (106, 37160), (113, 37217), (122, 37283), (136, 37370), (138, 37397), (141, 37409), (145, 37463),

Gene: Cain_53 Start: 36450, Stop: 37145, Start Num: 46

Candidate Starts for Cain_53:

(40, 36417), (Start: 46 @36450 has 32 MA's), (61, 36528), (63, 36537), (70, 36579), (79, 36648), (105, 36822), (107, 36831), (113, 36885), (120, 36936), (122, 36951), (135, 37035), (136, 37038),

Gene: CallaLilly_49 Start: 36606, Stop: 37397, Start Num: 25

Candidate Starts for CallaLilly_49:

(Start: 25 @36606 has 111 MA's), (32, 36642), (Start: 47 @36729 has 1 MA's), (61, 36783), (63, 36792), (70, 36834), (71, 36843), (78, 36882), (79, 36903), (87, 36969), (89, 36975), (106, 37083), (112, 37116), (113, 37140), (122, 37206), (136, 37293), (138, 37320), (141, 37332), (145, 37386),

Gene: Capricorn_49 Start: 36683, Stop: 37474, Start Num: 25

Candidate Starts for Capricorn_49:

(Start: 25 @36683 has 111 MA's), (32, 36719), (Start: 47 @36806 has 1 MA's), (61, 36860), (63, 36869), (70, 36911), (71, 36920), (78, 36959), (79, 36980), (87, 37046), (89, 37052), (106, 37160), (113, 37217), (122, 37283), (136, 37370), (138, 37397), (141, 37409), (145, 37463),

Gene: CaseJules_51 Start: 36880, Stop: 37671, Start Num: 25

Candidate Starts for CaseJules_51:

(Start: 25 @36880 has 111 MA's), (32, 36916), (Start: 47 @37003 has 1 MA's), (61, 37057), (63, 37066), (70, 37108), (71, 37117), (78, 37156), (79, 37177), (87, 37243), (89, 37249), (106, 37357), (113, 37414), (122, 37480), (136, 37567), (138, 37594), (141, 37606), (145, 37660),

Gene: Chancellor_56 Start: 38211, Stop: 38903, Start Num: 48

Candidate Starts for Chancellor_56:

(Start: 48 @38211 has 21 MA's), (Start: 49 @38214 has 1 MA's), (58, 38274), (59, 38277), (61, 38295), (71, 38352), (74, 38364), (84, 38466), (86, 38472), (96, 38535), (110, 38616), (112, 38628), (115, 38673), (120, 38703), (122, 38718), (126, 38751), (129, 38763), (130, 38772), (137, 38820), (143, 38859),

Gene: Chavito_53 Start: 38132, Stop: 38947, Start Num: 25

Candidate Starts for Chavito_53:

(1, 37820), (4, 37877), (5, 37892), (23, 38102), (Start: 25 @38132 has 111 MA's), (Start: 47 @38255 has 1 MA's), (61, 38330), (63, 38339), (70, 38381), (71, 38390), (77, 38426), (79, 38450), (81, 38459), (98, 38585), (108, 38645), (112, 38663), (116, 38720), (120, 38738), (122, 38753), (135, 38837), (136, 38840), (138, 38867), (141, 38879), (143, 38894),

Gene: CheetoDust_48 Start: 36052, Stop: 36843, Start Num: 25

Candidate Starts for CheetoDust_48:

(Start: 25 @36052 has 111 MA's), (32, 36088), (Start: 47 @36175 has 1 MA's), (61, 36229), (63, 36238), (70, 36280), (71, 36289), (78, 36328), (79, 36349), (87, 36415), (89, 36421), (106, 36529), (113, 36586), (122, 36652), (135, 36736), (136, 36739), (138, 36766), (141, 36778), (145, 36832),

Gene: Cheetobro_56 Start: 38208, Stop: 38900, Start Num: 48

Candidate Starts for Cheetobro_56:

(Start: 48 @38208 has 21 MA's), (Start: 49 @38211 has 1 MA's), (58, 38271), (59, 38274), (61, 38292), (71, 38349), (74, 38361), (84, 38463), (86, 38469), (96, 38532), (110, 38613), (112, 38625), (115, 38670), (120, 38700), (122, 38715), (126, 38748), (129, 38760), (130, 38769), (137, 38817), (143, 38856),

Gene: Chris_52 Start: 37597, Stop: 38295, Start Num: 46

Candidate Starts for Chris_52:

(37, 37531), (40, 37561), (Start: 46 @37597 has 32 MA's), (61, 37684), (63, 37693), (77, 37780), (79, 37804), (98, 37939), (113, 38041), (120, 38092), (122, 38107), (135, 38191), (136, 38194), (141, 38233),

Gene: Clipper_52 Start: 37199, Stop: 37990, Start Num: 25

Candidate Starts for Clipper_52:

(Start: 25 @37199 has 111 MA's), (32, 37235), (Start: 47 @37322 has 1 MA's), (63, 37385), (70, 37427), (71, 37436), (78, 37475), (79, 37496), (87, 37562), (89, 37568), (106, 37676), (113, 37733), (122, 37799), (135, 37883), (136, 37886), (138, 37913), (145, 37979),

Gene: Collard_45 Start: 35590, Stop: 36345, Start Num: 39

Candidate Starts for Collard_45:

(Start: 39 @35590 has 7 MA's), (Start: 41 @35617 has 18 MA's), (56, 35710), (61, 35740), (71, 35800), (76, 35827), (77, 35836), (85, 35917), (88, 35929), (89, 35932), (117, 36139), (121, 36160), (122, 36169), (124, 36193), (137, 36259), (138, 36271), (143, 36298),

Gene: CrimD_49 Start: 36789, Stop: 37580, Start Num: 25

Candidate Starts for CrimD_49:

(Start: 25 @36789 has 111 MA's), (32, 36825), (Start: 47 @36912 has 1 MA's), (61, 36966), (63, 36975), (70, 37017), (71, 37026), (78, 37065), (79, 37086), (87, 37152), (89, 37158), (106, 37266), (113, 37323), (122, 37389), (135, 37473), (136, 37476), (138, 37503), (141, 37515), (145, 37569),

Gene: Curiosium_51 Start: 35467, Stop: 36258, Start Num: 25

Candidate Starts for Curiosium_51:

(Start: 25 @35467 has 111 MA's), (32, 35503), (38, 35530), (Start: 47 @35590 has 1 MA's), (61, 35644), (63, 35653), (72, 35707), (77, 35740), (78, 35743), (79, 35764), (113, 36001), (122, 36067), (129, 36112), (135, 36151), (136, 36154), (138, 36181), (141, 36193),

Gene: DS6A_65 Start: 43090, Stop: 43806, Start Num: 30

Candidate Starts for DS6A_65:

(Start: 30 @43090 has 1 MA's), (33, 43099), (35, 43108), (45, 43177), (50, 43201), (60, 43255), (62, 43273), (66, 43285), (68, 43288), (69, 43294), (89, 43423), (100, 43495), (103, 43510), (110, 43546), (120, 43633), (122, 43648), (123, 43651), (125, 43669), (136, 43729), (140, 43768), (142, 43771), (144, 43795),

Gene: Dadosky_47 Start: 35512, Stop: 36240, Start Num: 41

Candidate Starts for Dadosky_47:

(Start: 39 @35485 has 7 MA's), (Start: 41 @35512 has 18 MA's), (61, 35635), (76, 35722), (77, 35731), (85, 35812), (88, 35824), (89, 35827), (117, 36034), (121, 36055), (122, 36064), (124, 36088), (137, 36154), (138, 36166), (143, 36193),

Gene: Dalmuri_49 Start: 36683, Stop: 37474, Start Num: 25

Candidate Starts for Dalmuri_49:

(Start: 25 @36683 has 111 MA's), (32, 36719), (Start: 47 @36806 has 1 MA's), (61, 36860), (63, 36869), (70, 36911), (71, 36920), (78, 36959), (79, 36980), (87, 37046), (89, 37052), (106, 37160), (113, 37217), (122, 37283), (136, 37370), (138, 37397), (141, 37409), (145, 37463),

Gene: DanSyl44_59 Start: 39339, Stop: 40028, Start Num: 49

Candidate Starts for DanSyl44_59:

(Start: 48 @39336 has 21 MA's), (Start: 49 @39339 has 1 MA's), (58, 39399), (59, 39402), (61, 39420), (71, 39477), (74, 39489), (84, 39591), (86, 39597), (96, 39660), (110, 39741), (112, 39753), (115, 39798), (120, 39828), (122, 39843), (126, 39876), (129, 39888), (130, 39897), (137, 39945), (143, 39984),

Gene: DartGoblin_51 Start: 37364, Stop: 38155, Start Num: 25

Candidate Starts for DartGoblin_51:

(Start: 25 @37364 has 111 MA's), (32, 37400), (Start: 47 @37487 has 1 MA's), (61, 37541), (63, 37550), (70, 37592), (71, 37601), (72, 37604), (75, 37625), (77, 37637), (79, 37661), (87, 37727), (89, 37733), (106, 37841), (113, 37898), (122, 37964), (125, 37991), (136, 38051), (138, 38078), (141, 38090), (145, 38144),

Gene: DarthP_52 Start: 37659, Stop: 38447, Start Num: 25

Candidate Starts for DarthP_52:

(2, 37368), (20, 37590), (Start: 25 @37659 has 111 MA's), (Start: 47 @37782 has 1 MA's), (57, 37812), (61, 37836), (63, 37845), (70, 37887), (71, 37896), (75, 37920), (79, 37956), (88, 38025), (98, 38091),

(113, 38193), (116, 38226), (118, 38238), (135, 38340), (136, 38343), (138, 38370), (141, 38382),

Gene: Dartin_52 Start: 37470, Stop: 38288, Start Num: 25

Candidate Starts for Dartin_52:

(5, 37230), (23, 37440), (Start: 25 @37470 has 111 MA's), (Start: 47 @37593 has 1 MA's), (61, 37668), (63, 37677), (70, 37719), (75, 37755), (77, 37767), (79, 37791), (86, 37851), (98, 37926), (108, 37986), (112, 38004), (113, 38028), (116, 38061), (120, 38079), (122, 38094), (135, 38175), (136, 38178), (138, 38205), (141, 38217),

Gene: Deby_49 Start: 36811, Stop: 37602, Start Num: 25

Candidate Starts for Deby_49:

(Start: 25 @36811 has 111 MA's), (32, 36847), (Start: 47 @36934 has 1 MA's), (61, 36988), (63, 36997), (70, 37039), (71, 37048), (78, 37087), (79, 37108), (87, 37174), (89, 37180), (106, 37288), (113, 37345), (122, 37411), (135, 37495), (136, 37498), (138, 37525), (141, 37537), (145, 37591),

Gene: Devera_54 Start: 37315, Stop: 38106, Start Num: 25

Candidate Starts for Devera_54:

(Start: 25 @37315 has 111 MA's), (32, 37351), (Start: 47 @37438 has 1 MA's), (61, 37492), (63, 37501), (70, 37543), (71, 37552), (72, 37555), (78, 37591), (79, 37612), (87, 37678), (89, 37684), (106, 37792), (113, 37849), (122, 37915), (125, 37942), (138, 38029), (141, 38041),

Gene: DismalFunk_53 Start: 38822, Stop: 39562, Start Num: 44

Candidate Starts for DismalFunk_53:

(31, 38744), (Start: 44 @38822 has 10 MA's), (Start: 52 @38873 has 1 MA's), (59, 38912), (61, 38930), (70, 38981), (77, 39026), (79, 39050), (84, 39104), (98, 39185), (101, 39209), (102, 39218), (106, 39236), (112, 39269), (115, 39314), (120, 39344), (122, 39359), (124, 39389), (138, 39476), (145, 39551),

Gene: DismalStressor_53 Start: 38822, Stop: 39562, Start Num: 44

Candidate Starts for DismalStressor_53:

(31, 38744), (Start: 44 @38822 has 10 MA's), (Start: 52 @38873 has 1 MA's), (59, 38912), (61, 38930), (70, 38981), (77, 39026), (79, 39050), (84, 39104), (98, 39185), (101, 39209), (102, 39218), (106, 39236), (112, 39269), (115, 39314), (120, 39344), (122, 39359), (124, 39389), (138, 39476), (145, 39551),

Gene: Dole_52 Start: 37317, Stop: 38108, Start Num: 25

Candidate Starts for Dole_52:

(Start: 25 @37317 has 111 MA's), (32, 37353), (Start: 47 @37440 has 1 MA's), (61, 37494), (63, 37503), (70, 37545), (71, 37554), (72, 37557), (78, 37593), (79, 37614), (87, 37680), (89, 37686), (106, 37794), (113, 37851), (122, 37917), (125, 37944), (138, 38031), (141, 38043),

Gene: DoubleChamp_44 Start: 35617, Stop: 36345, Start Num: 41

Candidate Starts for DoubleChamp_44:

(Start: 39 @35590 has 7 MA's), (Start: 41 @35617 has 18 MA's), (56, 35710), (61, 35740), (71, 35800), (76, 35827), (77, 35836), (85, 35917), (88, 35929), (89, 35932), (117, 36139), (121, 36160), (122, 36169), (124, 36193), (137, 36259), (138, 36271), (143, 36298),

Gene: Doughnut_53 Start: 38432, Stop: 39172, Start Num: 44

Candidate Starts for Doughnut_53:

(Start: 44 @38432 has 10 MA's), (Start: 52 @38483 has 1 MA's), (59, 38522), (61, 38540), (70, 38591), (77, 38636), (79, 38660), (84, 38714), (98, 38795), (101, 38819), (102, 38828), (106, 38846), (112, 38879), (115, 38924), (120, 38954), (122, 38969), (124, 38999), (138, 39086), (145, 39161),

Gene: DrHayes_50 Start: 37454, Stop: 38245, Start Num: 25

Candidate Starts for DrHayes_50:

(Start: 25 @37454 has 111 MA's), (32, 37490), (Start: 47 @37577 has 1 MA's), (61, 37631), (63, 37640), (70, 37682), (71, 37691), (72, 37694), (75, 37715), (79, 37751), (87, 37817), (89, 37823), (106, 37931), (113, 37988), (122, 38054), (125, 38081), (135, 38138), (136, 38141), (138, 38168), (141, 38180), (145, 38234),

Gene: Durfee_49 Start: 36880, Stop: 37671, Start Num: 25

Candidate Starts for Durfee_49:

(Start: 25 @36880 has 111 MA's), (32, 36916), (Start: 47 @37003 has 1 MA's), (61, 37057), (63, 37066), (70, 37108), (71, 37117), (78, 37156), (79, 37177), (87, 37243), (89, 37249), (106, 37357), (113, 37414), (122, 37480), (136, 37567), (138, 37594), (141, 37606), (145, 37660),

Gene: Edugator_44 Start: 35910, Stop: 36665, Start Num: 39

Candidate Starts for Edugator_44:

(Start: 39 @35910 has 7 MA's), (Start: 41 @35937 has 18 MA's), (61, 36060), (76, 36147), (77, 36156), (85, 36237), (88, 36249), (89, 36252), (117, 36459), (121, 36480), (122, 36489), (124, 36513), (137, 36579), (143, 36618),

Gene: Efra2_52 Start: 36399, Stop: 37190, Start Num: 25

Candidate Starts for Efra2_52:

(Start: 25 @36399 has 111 MA's), (32, 36435), (Start: 47 @36522 has 1 MA's), (61, 36576), (63, 36585), (72, 36639), (75, 36660), (77, 36672), (79, 36696), (88, 36765), (113, 36933), (122, 36999), (135, 37083), (138, 37113), (141, 37125),

Gene: Ekdilam_49 Start: 37206, Stop: 37994, Start Num: 25

Candidate Starts for Ekdilam_49:

(20, 37137), (Start: 25 @37206 has 111 MA's), (Start: 47 @37329 has 1 MA's), (57, 37359), (61, 37383), (63, 37392), (70, 37434), (71, 37443), (72, 37446), (75, 37467), (79, 37503), (86, 37563), (98, 37638), (113, 37740), (116, 37773), (124, 37830), (135, 37887), (136, 37890), (138, 37917), (141, 37929),

Gene: Ellie_48 Start: 36959, Stop: 37744, Start Num: 25

Candidate Starts for Ellie_48:

(3, 36689), (Start: 25 @36959 has 111 MA's), (Start: 47 @37082 has 1 MA's), (61, 37136), (63, 37145), (70, 37187), (71, 37196), (72, 37199), (75, 37220), (77, 37232), (79, 37256), (89, 37328), (98, 37391), (105, 37430), (108, 37451), (110, 37457), (122, 37559), (135, 37640), (136, 37643), (138, 37670), (141, 37682),

Gene: Emerson_50 Start: 36559, Stop: 37350, Start Num: 25

Candidate Starts for Emerson_50:

(Start: 25 @36559 has 111 MA's), (32, 36595), (Start: 47 @36682 has 1 MA's), (61, 36736), (63, 36745), (70, 36787), (71, 36796), (78, 36835), (79, 36856), (87, 36922), (89, 36928), (106, 37036), (113, 37093), (122, 37159), (135, 37243), (136, 37246), (138, 37273), (141, 37285),

Gene: Enkosi_47 Start: 38838, Stop: 39656, Start Num: 25

Candidate Starts for Enkosi_47:

(Start: 25 @38838 has 111 MA's), (Start: 47 @38961 has 1 MA's), (61, 39036), (63, 39045), (70, 39087), (75, 39123), (77, 39135), (79, 39159), (87, 39225), (98, 39294), (99, 39297), (113, 39396), (120, 39447), (122, 39462), (124, 39486), (125, 39489), (135, 39546), (136, 39549),

Gene: Eponine_58 Start: 39048, Stop: 39740, Start Num: 48

Candidate Starts for Eponine_58:

(Start: 48 @39048 has 21 MA's), (Start: 49 @39051 has 1 MA's), (58, 39111), (59, 39114), (71, 39189), (74, 39201), (84, 39303), (86, 39309), (96, 39372), (110, 39453), (112, 39465), (115, 39510), (120, 39540), (122, 39555), (126, 39588), (130, 39609), (137, 39657), (143, 39696),

Gene: Fefferhead_50 Start: 36909, Stop: 37694, Start Num: 25

Candidate Starts for Fefferhead_50:

(3, 36639), (Start: 25 @36909 has 111 MA's), (Start: 47 @37032 has 1 MA's), (61, 37086), (63, 37095), (70, 37137), (71, 37146), (72, 37149), (75, 37170), (77, 37182), (79, 37206), (89, 37278), (98, 37341), (105, 37380), (108, 37401), (110, 37407), (122, 37509), (135, 37590), (136, 37593), (138, 37620), (141, 37632),

Gene: Feyre_46 Start: 36760, Stop: 37491, Start Num: 41

Candidate Starts for Feyre_46:

(Start: 39 @36733 has 7 MA's), (Start: 41 @36760 has 18 MA's), (60, 36868), (61, 36880), (77, 36976), (79, 37000), (86, 37060), (89, 37072), (95, 37117), (98, 37135), (101, 37159), (106, 37186), (121, 37300), (122, 37309), (123, 37312), (137, 37399), (143, 37438),

Gene: Findley_53 Start: 38815, Stop: 39555, Start Num: 44

Candidate Starts for Findley_53:

(31, 38737), (Start: 44 @38815 has 10 MA's), (Start: 52 @38866 has 1 MA's), (59, 38905), (61, 38923), (70, 38974), (77, 39019), (79, 39043), (84, 39097), (98, 39178), (101, 39202), (102, 39211), (106, 39229), (112, 39262), (115, 39307), (120, 39337), (122, 39352), (124, 39382), (138, 39469), (145, 39544),

Gene: Fionnbharth_56 Start: 38446, Stop: 39138, Start Num: 48

Candidate Starts for Fionnbharth_56:

(Start: 48 @38446 has 21 MA's), (Start: 49 @38449 has 1 MA's), (58, 38509), (59, 38512), (71, 38587), (74, 38599), (84, 38701), (86, 38707), (96, 38770), (110, 38851), (112, 38863), (115, 38908), (120, 38938), (122, 38953), (126, 38986), (130, 39007), (137, 39055), (143, 39094),

Gene: Ganymede_50 Start: 36998, Stop: 37789, Start Num: 25

Candidate Starts for Ganymede_50:

(Start: 25 @36998 has 111 MA's), (32, 37034), (Start: 47 @37121 has 1 MA's), (57, 37151), (61, 37175), (63, 37184), (70, 37226), (71, 37235), (78, 37274), (79, 37295), (87, 37361), (89, 37367), (106, 37475), (113, 37532), (117, 37568), (122, 37598), (135, 37682), (136, 37685), (138, 37712), (141, 37724), (145, 37778),

Gene: Gengar_45 Start: 35348, Stop: 36106, Start Num: 39

Candidate Starts for Gengar_45:

(Start: 39 @35348 has 7 MA's), (Start: 41 @35375 has 18 MA's), (60, 35483), (61, 35495), (77, 35591), (79, 35615), (86, 35675), (89, 35687), (95, 35732), (98, 35750), (101, 35774), (106, 35801), (121, 35915), (122, 35924), (123, 35927), (137, 36014), (143, 36053),

Gene: Geraldini_52 Start: 37615, Stop: 38406, Start Num: 25

Candidate Starts for Geraldini_52:

(Start: 25 @37615 has 111 MA's), (32, 37651), (Start: 47 @37738 has 1 MA's), (61, 37792), (63, 37801), (70, 37843), (71, 37852), (78, 37891), (79, 37912), (87, 37978), (89, 37984), (106, 38092), (113, 38149), (122, 38215), (135, 38299), (136, 38302), (138, 38329), (141, 38341), (145, 38395),

Gene: Guanica15_52 Start: 36356, Stop: 37147, Start Num: 25

Candidate Starts for Guanica15_52:

(Start: 25 @36356 has 111 MA's), (32, 36392), (Start: 47 @36479 has 1 MA's), (61, 36533), (63, 36542), (72, 36596), (75, 36617), (77, 36629), (79, 36653), (88, 36722), (113, 36890), (122, 36956),

(135, 37040), (136, 37043), (138, 37070), (141, 37082),

Gene: Guillsminger_46 Start: 35346, Stop: 36077, Start Num: 41

Candidate Starts for Guillsminger_46:

(Start: 39 @35319 has 7 MA's), (Start: 41 @35346 has 18 MA's), (60, 35454), (61, 35466), (77, 35562), (79, 35586), (86, 35646), (89, 35658), (95, 35703), (98, 35721), (101, 35745), (106, 35772), (121, 35886), (122, 35895), (123, 35898), (137, 35985), (143, 36024),

Gene: Hammy_52 Start: 37647, Stop: 38435, Start Num: 25

Candidate Starts for Hammy_52:

(2, 37356), (20, 37578), (Start: 25 @37647 has 111 MA's), (Start: 47 @37770 has 1 MA's), (57, 37800), (61, 37824), (63, 37833), (70, 37875), (71, 37884), (75, 37908), (79, 37944), (98, 38079), (113, 38181), (116, 38214), (118, 38226), (135, 38328), (136, 38331), (138, 38358), (141, 38370),

Gene: HedwigODU_49 Start: 36568, Stop: 37359, Start Num: 25

Candidate Starts for HedwigODU_49:

(Start: 25 @36568 has 111 MA's), (32, 36604), (Start: 47 @36691 has 1 MA's), (61, 36745), (63, 36754), (70, 36796), (71, 36805), (78, 36844), (79, 36865), (87, 36931), (89, 36937), (106, 37045), (113, 37102), (122, 37168), (135, 37252), (136, 37255), (141, 37294), (145, 37348),

Gene: Heftyboy_45 Start: 35496, Stop: 36227, Start Num: 41

Candidate Starts for Heftyboy_45:

(Start: 39 @35469 has 7 MA's), (Start: 41 @35496 has 18 MA's), (60, 35604), (61, 35616), (77, 35712), (79, 35736), (86, 35796), (89, 35808), (98, 35871), (101, 35895), (106, 35922), (119, 36027), (121, 36036), (122, 36045), (123, 36048), (137, 36135), (143, 36174),

Gene: Homura_49 Start: 36683, Stop: 37474, Start Num: 25

Candidate Starts for Homura_49:

(Start: 25 @36683 has 111 MA's), (32, 36719), (Start: 47 @36806 has 1 MA's), (61, 36860), (63, 36869), (70, 36911), (71, 36920), (78, 36959), (79, 36980), (87, 37046), (89, 37052), (106, 37160), (113, 37217), (122, 37283), (136, 37370), (138, 37397), (141, 37409), (145, 37463),

Gene: Hurricane_52 Start: 37245, Stop: 37922, Start Num: 46

Candidate Starts for Hurricane_52:

(Start: 46 @37245 has 32 MA's), (61, 37320), (70, 37371), (77, 37416), (79, 37440), (88, 37509), (93, 37551), (98, 37575), (103, 37608), (106, 37620), (112, 37653), (113, 37677), (124, 37767), (136, 37830), (138, 37857),

Gene: Hyperbowlee_49 Start: 36880, Stop: 37671, Start Num: 25

Candidate Starts for Hyperbowlee_49:

(Start: 25 @36880 has 111 MA's), (32, 36916), (Start: 47 @37003 has 1 MA's), (61, 37057), (63, 37066), (70, 37108), (71, 37117), (78, 37156), (79, 37177), (87, 37243), (89, 37249), (106, 37357), (113, 37414), (122, 37480), (136, 37567), (138, 37594), (141, 37606), (145, 37660),

Gene: Illumine_52 Start: 37317, Stop: 38108, Start Num: 25

Candidate Starts for Illumine_52:

(Start: 25 @37317 has 111 MA's), (32, 37353), (Start: 47 @37440 has 1 MA's), (61, 37494), (63, 37503), (70, 37545), (71, 37554), (72, 37557), (78, 37593), (79, 37614), (87, 37680), (89, 37686), (106, 37794), (113, 37851), (122, 37917), (125, 37944), (138, 38031), (141, 38043),

Gene: Inky_49 Start: 36683, Stop: 37474, Start Num: 25

Candidate Starts for Inky_49:

(Start: 25 @36683 has 111 MA's), (32, 36719), (Start: 47 @36806 has 1 MA's), (61, 36860), (63, 36869), (70, 36911), (71, 36920), (78, 36959), (79, 36980), (87, 37046), (89, 37052), (106, 37160), (113, 37217), (122, 37283), (136, 37370), (138, 37397), (141, 37409), (145, 37463),

Gene: InvictusManeo_45 Start: 35660, Stop: 36388, Start Num: 41

Candidate Starts for InvictusManeo_45:

(Start: 39 @35633 has 7 MA's), (Start: 41 @35660 has 18 MA's), (56, 35753), (61, 35783), (71, 35843), (76, 35870), (77, 35879), (85, 35960), (88, 35972), (89, 35975), (117, 36182), (121, 36203), (122, 36212), (124, 36236), (137, 36302), (138, 36314), (143, 36341),

Gene: JAWS_49 Start: 36557, Stop: 37348, Start Num: 25

Candidate Starts for JAWS_49:

(Start: 25 @36557 has 111 MA's), (32, 36593), (Start: 47 @36680 has 1 MA's), (61, 36734), (63, 36743), (70, 36785), (78, 36833), (79, 36854), (87, 36920), (89, 36926), (106, 37034), (113, 37091), (122, 37157), (136, 37244), (138, 37271), (141, 37283), (145, 37337),

Gene: JF1_56 Start: 38363, Stop: 39055, Start Num: 48

Candidate Starts for JF1_56:

(Start: 48 @38363 has 21 MA's), (Start: 49 @38366 has 1 MA's), (58, 38426), (59, 38429), (61, 38447), (71, 38504), (74, 38516), (84, 38618), (86, 38624), (96, 38687), (110, 38768), (112, 38780), (115, 38825), (117, 38840), (120, 38855), (122, 38870), (126, 38903), (129, 38915), (130, 38924), (137, 38972), (143, 39011),

Gene: Jarvi_49 Start: 36683, Stop: 37474, Start Num: 25

Candidate Starts for Jarvi_49:

(Start: 25 @36683 has 111 MA's), (32, 36719), (Start: 47 @36806 has 1 MA's), (61, 36860), (63, 36869), (70, 36911), (71, 36920), (78, 36959), (79, 36980), (87, 37046), (89, 37052), (106, 37160), (113, 37217), (122, 37283), (136, 37370), (138, 37397), (141, 37409), (145, 37463),

Gene: Jayhawk_50 Start: 36566, Stop: 37357, Start Num: 25

Candidate Starts for Jayhawk_50:

(Start: 25 @36566 has 111 MA's), (32, 36602), (Start: 47 @36689 has 1 MA's), (61, 36743), (63, 36752), (70, 36794), (71, 36803), (78, 36842), (79, 36863), (87, 36929), (89, 36935), (106, 37043), (113, 37100), (122, 37166), (135, 37250), (136, 37253), (138, 37280), (141, 37292), (145, 37346),

Gene: Jeckyll_49 Start: 36683, Stop: 37474, Start Num: 25

Candidate Starts for Jeckyll_49:

(Start: 25 @36683 has 111 MA's), (32, 36719), (Start: 47 @36806 has 1 MA's), (61, 36860), (63, 36869), (70, 36911), (71, 36920), (78, 36959), (79, 36980), (87, 37046), (89, 37052), (106, 37160), (112, 37193), (113, 37217), (122, 37283), (136, 37370), (138, 37397), (141, 37409), (145, 37463),

Gene: Joy99_49 Start: 36612, Stop: 37403, Start Num: 25

Candidate Starts for Joy99_49:

(Start: 25 @36612 has 111 MA's), (32, 36648), (Start: 47 @36735 has 1 MA's), (61, 36789), (63, 36798), (70, 36840), (71, 36849), (78, 36888), (79, 36909), (87, 36975), (89, 36981), (106, 37089), (113, 37146), (122, 37212), (136, 37299), (138, 37326), (141, 37338), (145, 37392),

Gene: Juliette_58 Start: 38516, Stop: 39208, Start Num: 48

Candidate Starts for Juliette_58:

(Start: 48 @38516 has 21 MA's), (Start: 49 @38519 has 1 MA's), (58, 38579), (59, 38582), (61, 38600), (71, 38657), (74, 38669), (84, 38771), (86, 38777), (96, 38840), (110, 38921), (112, 38933), (115, 38978), (120, 39008), (122, 39023), (126, 39056), (129, 39068), (130, 39077), (137, 39125), (143, 39164),

Gene: Keshu_54 Start: 37312, Stop: 37989, Start Num: 46

Candidate Starts for Keshu_54:

(Start: 46 @37312 has 32 MA's), (61, 37387), (70, 37438), (77, 37483), (79, 37507), (88, 37576), (93, 37618), (98, 37642), (103, 37675), (106, 37687), (112, 37720), (113, 37744), (121, 37801), (124, 37834), (138, 37924), (139, 37930),

Gene: KiSi_54 Start: 37986, Stop: 38690, Start Num: 46

Candidate Starts for KiSi_54:

(37, 37920), (40, 37950), (Start: 46 @37986 has 32 MA's), (50, 38010), (61, 38073), (63, 38082), (70, 38124), (71, 38133), (75, 38157), (77, 38169), (79, 38193), (98, 38328), (106, 38373), (113, 38430), (120, 38481), (124, 38520), (135, 38580), (136, 38583), (141, 38622),

Gene: Kratio_44 Start: 35184, Stop: 35939, Start Num: 39

Candidate Starts for Kratio_44:

(Start: 39 @35184 has 7 MA's), (Start: 41 @35211 has 18 MA's), (61, 35334), (76, 35421), (77, 35430), (85, 35511), (88, 35523), (89, 35526), (117, 35733), (122, 35763), (124, 35787), (137, 35853), (138, 35865), (143, 35892),

Gene: Kraw_56 Start: 38204, Stop: 38896, Start Num: 48

Candidate Starts for Kraw_56:

(Start: 48 @38204 has 21 MA's), (Start: 49 @38207 has 1 MA's), (58, 38267), (59, 38270), (61, 38288), (71, 38345), (74, 38357), (84, 38459), (86, 38465), (96, 38528), (110, 38609), (112, 38621), (115, 38666), (120, 38696), (122, 38711), (126, 38744), (129, 38756), (130, 38765), (137, 38813), (143, 38852),

Gene: Krueger_56 Start: 37456, Stop: 38148, Start Num: 46

Candidate Starts for Krueger_56:

(40, 37423), (Start: 46 @37456 has 32 MA's), (61, 37534), (63, 37543), (70, 37585), (71, 37594), (77, 37630), (79, 37654), (105, 37828), (107, 37837), (113, 37891), (116, 37924), (120, 37942), (122, 37957), (135, 38041), (136, 38044),

Gene: Larva_46 Start: 35352, Stop: 36107, Start Num: 39

Candidate Starts for Larva_46:

(Start: 39 @35352 has 7 MA's), (Start: 41 @35379 has 18 MA's), (61, 35502), (76, 35589), (77, 35598), (85, 35679), (88, 35691), (89, 35694), (117, 35901), (121, 35922), (122, 35931), (124, 35955), (137, 36021), (138, 36033), (143, 36060),

Gene: LastHope_52 Start: 35843, Stop: 36631, Start Num: 26

Candidate Starts for LastHope_52:

(23, 35804), (Start: 26 @35843 has 1 MA's), (Start: 47 @35963 has 1 MA's), (61, 36017), (63, 36026), (67, 36041), (70, 36068), (78, 36116), (79, 36137), (87, 36203), (113, 36374), (122, 36440), (135, 36524), (136, 36527), (138, 36554),

Gene: LaterM_50 Start: 37445, Stop: 38236, Start Num: 25

Candidate Starts for LaterM_50:

(Start: 25 @37445 has 111 MA's), (32, 37481), (Start: 47 @37568 has 1 MA's), (61, 37622), (63, 37631), (70, 37673), (71, 37682), (72, 37685), (78, 37721), (79, 37742), (87, 37808), (89, 37814), (106, 37922), (113, 37979), (122, 38045), (125, 38072), (136, 38132), (138, 38159), (141, 38171),

Gene: Lavahound_49 Start: 37892, Stop: 38677, Start Num: 25

Candidate Starts for Lavahound_49:

(3, 37622), (Start: 25 @37892 has 111 MA's), (Start: 47 @38015 has 1 MA's), (61, 38069), (63, 38078), (70, 38120), (71, 38129), (72, 38132), (75, 38153), (77, 38165), (79, 38189), (89, 38261), (98, 38324), (108, 38384), (110, 38390), (122, 38492), (135, 38573), (136, 38576), (138, 38603), (141, 38615),

Gene: LeMond_54 Start: 37970, Stop: 38674, Start Num: 46

Candidate Starts for LeMond_54:

(40, 37934), (Start: 46 @37970 has 32 MA's), (50, 37994), (61, 38057), (63, 38066), (70, 38108), (71, 38117), (75, 38141), (77, 38153), (79, 38177), (98, 38312), (106, 38357), (113, 38414), (120, 38465), (124, 38504), (135, 38564), (136, 38567), (141, 38606),

Gene: Lea83_52 Start: 37298, Stop: 37975, Start Num: 46

Candidate Starts for Lea83_52:

(Start: 46 @37298 has 32 MA's), (61, 37373), (70, 37424), (77, 37469), (79, 37493), (88, 37562), (93, 37604), (98, 37628), (103, 37661), (106, 37673), (112, 37706), (113, 37730), (121, 37787), (124, 37820), (136, 37883), (138, 37910), (139, 37916),

Gene: Lebo14_55 Start: 38474, Stop: 39163, Start Num: 49

Candidate Starts for Lebo14_55:

(Start: 48 @38471 has 21 MA's), (Start: 49 @38474 has 1 MA's), (58, 38534), (59, 38537), (61, 38555), (71, 38612), (74, 38624), (84, 38726), (86, 38732), (96, 38795), (110, 38876), (112, 38888), (115, 38933), (120, 38963), (122, 38978), (126, 39011), (129, 39023), (130, 39032), (137, 39080), (143, 39119),

Gene: Leston_45 Start: 35475, Stop: 36206, Start Num: 41

Candidate Starts for Leston_45:

(Start: 39 @35448 has 7 MA's), (Start: 41 @35475 has 18 MA's), (60, 35583), (61, 35595), (77, 35691), (79, 35715), (86, 35775), (89, 35787), (95, 35832), (98, 35850), (101, 35874), (106, 35901), (121, 36015), (122, 36024), (123, 36027), (137, 36114), (143, 36153),

Gene: LilDirt_46 Start: 35418, Stop: 36146, Start Num: 41

Candidate Starts for LilDirt_46:

(Start: 39 @35391 has 7 MA's), (Start: 41 @35418 has 18 MA's), (56, 35511), (61, 35541), (71, 35601), (76, 35628), (77, 35637), (85, 35718), (88, 35730), (89, 35733), (117, 35940), (121, 35961), (122, 35970), (124, 35994), (137, 36060), (138, 36072), (143, 36099),

Gene: LilPharaoh_45 Start: 35953, Stop: 36771, Start Num: 25

Candidate Starts for LilPharaoh_45:

(Start: 25 @35953 has 111 MA's), (Start: 47 @36076 has 1 MA's), (61, 36151), (63, 36160), (70, 36202), (75, 36238), (77, 36250), (79, 36274), (87, 36340), (98, 36409), (99, 36412), (113, 36511), (120, 36562), (122, 36577), (124, 36601), (125, 36604), (135, 36661), (136, 36664),

Gene: LindNT_48 Start: 36768, Stop: 37559, Start Num: 25

Candidate Starts for LindNT_48:

(Start: 25 @36768 has 111 MA's), (32, 36804), (Start: 47 @36891 has 1 MA's), (61, 36945), (63, 36954), (70, 36996), (71, 37005), (78, 37044), (79, 37065), (87, 37131), (89, 37137), (106, 37245), (113, 37302), (122, 37368), (129, 37413), (135, 37452), (136, 37455), (138, 37482), (141, 37494), (145, 37548),

Gene: Llorens_49 Start: 36683, Stop: 37474, Start Num: 25

Candidate Starts for Llorens_49:

(Start: 25 @36683 has 111 MA's), (32, 36719), (Start: 47 @36806 has 1 MA's), (61, 36860), (63, 36869), (70, 36911), (71, 36920), (78, 36959), (79, 36980), (87, 37046), (89, 37052), (106, 37160), (113, 37217), (122, 37283), (136, 37370), (138, 37397), (141, 37409), (145, 37463),

Gene: Lunahalos_49 Start: 36683, Stop: 37474, Start Num: 25

Candidate Starts for Lunahalos_49:

(Start: 25 @36683 has 111 MA's), (32, 36719), (Start: 47 @36806 has 1 MA's), (61, 36860), (63, 36869), (70, 36911), (71, 36920), (78, 36959), (79, 36980), (87, 37046), (89, 37052), (106, 37160), (113, 37217), (122, 37283), (136, 37370), (138, 37397), (141, 37409), (145, 37463),

Gene: MacKat_44 Start: 32083, Stop: 32874, Start Num: 25

Candidate Starts for MacKat_44:

(Start: 25 @32083 has 111 MA's), (32, 32119), (Start: 47 @32206 has 1 MA's), (63, 32269), (70, 32311), (71, 32320), (78, 32359), (79, 32380), (87, 32446), (89, 32452), (106, 32560), (113, 32617), (122, 32683), (135, 32767), (136, 32770), (138, 32797), (145, 32863),

Gene: MacnCheese_54 Start: 38254, Stop: 38931, Start Num: 46

Candidate Starts for MacnCheese_54:

(18, 38008), (Start: 46 @38254 has 32 MA's), (61, 38329), (70, 38380), (79, 38449), (88, 38518), (93, 38560), (98, 38584), (103, 38617), (106, 38629), (110, 38650), (112, 38662), (113, 38686), (121, 38743), (122, 38752), (124, 38776), (136, 38839), (138, 38866),

Gene: MalagasyRose_51 Start: 35357, Stop: 36058, Start Num: 43

Candidate Starts for MalagasyRose_51:

(7, 35012), (8, 35027), (10, 35033), (12, 35048), (13, 35066), (15, 35111), (19, 35177), (21, 35180), (22, 35201), (24, 35210), (29, 35273), (Start: 43 @35357 has 1 MA's), (55, 35420), (64, 35480), (70, 35516), (76, 35549), (79, 35582), (82, 35618), (83, 35633), (86, 35642), (90, 35663), (91, 35675), (104, 35756), (106, 35768), (108, 35783), (109, 35786), (110, 35789), (111, 35792), (112, 35801), (113, 35825), (118, 35870), (120, 35876), (121, 35882), (122, 35891), (123, 35894), (124, 35921), (125, 35924), (129, 35942), (133, 35972), (135, 35981), (136, 35984), (138, 36011), (139, 36017), (141, 36023),

Gene: Malthus_57 Start: 38204, Stop: 38896, Start Num: 48

Candidate Starts for Malthus_57:

(Start: 48 @38204 has 21 MA's), (Start: 49 @38207 has 1 MA's), (58, 38267), (59, 38270), (61, 38288), (71, 38345), (74, 38357), (84, 38459), (86, 38465), (96, 38528), (110, 38609), (112, 38621), (115, 38666), (120, 38696), (122, 38711), (126, 38744), (129, 38756), (130, 38765), (137, 38813), (143, 38852),

Gene: Marcoliusprime_53 Start: 38822, Stop: 39562, Start Num: 44

Candidate Starts for Marcoliusprime_53:

(31, 38744), (Start: 44 @38822 has 10 MA's), (Start: 52 @38873 has 1 MA's), (59, 38912), (61, 38930), (70, 38981), (77, 39026), (79, 39050), (84, 39104), (98, 39185), (101, 39209), (102, 39218), (106, 39236), (112, 39269), (115, 39314), (120, 39344), (122, 39359), (124, 39389), (138, 39476), (145, 39551),

Gene: MarkPhew_53 Start: 37429, Stop: 38127, Start Num: 46

Candidate Starts for MarkPhew_53:

(16, 37198), (37, 37363), (40, 37393), (Start: 46 @37429 has 32 MA's), (50, 37453), (61, 37516), (63, 37525), (70, 37567), (77, 37612), (79, 37636), (98, 37771), (106, 37816), (117, 37909), (122, 37939), (135, 38023), (136, 38026), (141, 38065),

Gene: Marshawn_52 Start: 37567, Stop: 38265, Start Num: 46

Candidate Starts for Marshawn_52:

(17, 37342), (27, 37453), (40, 37534), (Start: 46 @37567 has 32 MA's), (61, 37651), (63, 37660), (70, 37702), (71, 37711), (79, 37771), (86, 37831), (89, 37843), (112, 37984), (113, 38008), (117, 38044),

(118, 38053), (122, 38074), (123, 38077), (136, 38161), (141, 38200),

Gene: McMater_52 Start: 37470, Stop: 38288, Start Num: 25

Candidate Starts for McMater_52:

(5, 37230), (23, 37440), (Start: 25 @37470 has 111 MA's), (Start: 47 @37593 has 1 MA's), (61, 37668), (63, 37677), (70, 37719), (75, 37755), (77, 37767), (79, 37791), (86, 37851), (98, 37926), (108, 37986), (112, 38004), (113, 38028), (116, 38061), (120, 38079), (122, 38094), (135, 38175), (136, 38178), (138, 38205), (141, 38217),

Gene: Mdavu_46 Start: 36214, Stop: 37032, Start Num: 25

Candidate Starts for Mdavu_46:

(Start: 25 @36214 has 111 MA's), (Start: 47 @36337 has 1 MA's), (61, 36412), (63, 36421), (70, 36463), (75, 36499), (77, 36511), (79, 36535), (87, 36601), (98, 36670), (99, 36673), (113, 36772), (120, 36823), (122, 36838), (124, 36862), (125, 36865), (135, 36922), (136, 36925),

Gene: MeaningOfLife_50 Start: 37492, Stop: 38283, Start Num: 25

Candidate Starts for MeaningOfLife_50:

(Start: 25 @37492 has 111 MA's), (32, 37528), (Start: 47 @37615 has 1 MA's), (61, 37669), (63, 37678), (70, 37720), (71, 37729), (78, 37768), (79, 37789), (87, 37855), (89, 37861), (106, 37969), (113, 38026), (122, 38092), (135, 38176), (136, 38179), (138, 38206), (141, 38218), (145, 38272),

Gene: Megsy_51 Start: 36827, Stop: 37618, Start Num: 25

Candidate Starts for Megsy_51:

(Start: 25 @36827 has 111 MA's), (32, 36863), (Start: 47 @36950 has 1 MA's), (61, 37004), (63, 37013), (67, 37028), (70, 37055), (71, 37064), (78, 37103), (79, 37124), (87, 37190), (89, 37196), (106, 37304), (113, 37361), (122, 37427), (135, 37511), (136, 37514), (138, 37541), (145, 37607),

Gene: Milly_53 Start: 38795, Stop: 39535, Start Num: 44

Candidate Starts for Milly_53:

(31, 38717), (Start: 44 @38795 has 10 MA's), (Start: 52 @38846 has 1 MA's), (59, 38885), (61, 38903), (70, 38954), (77, 38999), (79, 39023), (84, 39077), (98, 39158), (101, 39182), (102, 39191), (106, 39209), (112, 39242), (115, 39287), (120, 39317), (122, 39332), (124, 39362), (138, 39449), (145, 39524),

Gene: Miryou_48 Start: 37678, Stop: 38409, Start Num: 41

Candidate Starts for Miryou_48:

(Start: 39 @37651 has 7 MA's), (Start: 41 @37678 has 18 MA's), (60, 37786), (61, 37798), (77, 37894), (79, 37918), (86, 37978), (89, 37990), (95, 38035), (98, 38053), (101, 38077), (106, 38104), (121, 38218), (122, 38227), (123, 38230), (137, 38317), (143, 38356),

Gene: MissDaisy_54 Start: 37736, Stop: 38428, Start Num: 48

Candidate Starts for MissDaisy_54:

(Start: 48 @37736 has 21 MA's), (58, 37799), (61, 37820), (74, 37889), (77, 37910), (78, 37913), (84, 37991), (86, 37997), (96, 38060), (110, 38141), (115, 38198), (120, 38228), (122, 38243), (126, 38276), (129, 38288), (130, 38297), (137, 38345), (143, 38384),

Gene: Mitti_56 Start: 38383, Stop: 39075, Start Num: 48

Candidate Starts for Mitti_56:

(Start: 48 @38383 has 21 MA's), (Start: 49 @38386 has 1 MA's), (58, 38446), (59, 38449), (61, 38467), (71, 38524), (74, 38536), (84, 38638), (86, 38644), (96, 38707), (110, 38788), (112, 38800), (115, 38845), (120, 38875), (122, 38890), (126, 38923), (129, 38935), (130, 38944), (137, 38992), (143, 39031),

Gene: Mufasa_53 Start: 38376, Stop: 39116, Start Num: 44

Candidate Starts for Mufasa_53:

(Start: 44 @38376 has 10 MA's), (Start: 52 @38427 has 1 MA's), (59, 38466), (61, 38484), (70, 38535), (77, 38580), (79, 38604), (84, 38658), (98, 38739), (101, 38763), (102, 38772), (106, 38790), (112, 38823), (115, 38868), (120, 38898), (122, 38913), (124, 38943), (138, 39030), (145, 39105),

Gene: Murucutumbu_50 Start: 37538, Stop: 38329, Start Num: 25

Candidate Starts for Murucutumbu_50:

(Start: 25 @37538 has 111 MA's), (32, 37574), (Start: 47 @37661 has 1 MA's), (61, 37715), (63, 37724), (70, 37766), (71, 37775), (78, 37814), (79, 37835), (87, 37901), (89, 37907), (106, 38015), (113, 38072), (122, 38138), (125, 38165), (129, 38183), (136, 38225), (138, 38252), (141, 38264),

Gene: Mynx_50 Start: 36884, Stop: 37675, Start Num: 25

Candidate Starts for Mynx_50:

(Start: 25 @36884 has 111 MA's), (32, 36920), (Start: 47 @37007 has 1 MA's), (61, 37061), (63, 37070), (70, 37112), (71, 37121), (78, 37160), (79, 37181), (87, 37247), (89, 37253), (106, 37361), (113, 37418), (122, 37484), (136, 37571), (141, 37610), (145, 37664),

Gene: Neighly_47 Start: 35378, Stop: 36106, Start Num: 41

Candidate Starts for Neighly_47:

(Start: 39 @35351 has 7 MA's), (Start: 41 @35378 has 18 MA's), (61, 35501), (76, 35588), (77, 35597), (85, 35678), (88, 35690), (89, 35693), (117, 35900), (121, 35921), (122, 35930), (124, 35954), (137, 36020), (138, 36032), (143, 36059),

Gene: Nergal_47 Start: 35299, Stop: 36027, Start Num: 42

Candidate Starts for Nergal_47:

(34, 35260), (Start: 42 @35299 has 1 MA's), (Start: 44 @35308 has 10 MA's), (54, 35359), (58, 35389), (89, 35605), (98, 35659), (102, 35695), (107, 35716), (120, 35821), (122, 35836), (123, 35839), (129, 35881), (138, 35944), (143, 35971),

Gene: Nibb_52 Start: 37118, Stop: 37816, Start Num: 46

Candidate Starts for Nibb_52:

(6, 36782), (14, 36860), (37, 37052), (40, 37082), (Start: 46 @37118 has 32 MA's), (50, 37142), (61, 37205), (63, 37214), (70, 37256), (75, 37289), (79, 37325), (98, 37460), (106, 37505), (113, 37562), (117, 37598), (122, 37628), (135, 37712), (136, 37715), (141, 37754),

Gene: Nikao_48 Start: 38838, Stop: 39656, Start Num: 25

Candidate Starts for Nikao_48:

(Start: 25 @38838 has 111 MA's), (Start: 47 @38961 has 1 MA's), (61, 39036), (63, 39045), (70, 39087), (75, 39123), (77, 39135), (79, 39159), (87, 39225), (98, 39294), (99, 39297), (113, 39396), (120, 39447), (122, 39462), (124, 39486), (125, 39489), (135, 39546), (136, 39549),

Gene: Niklas_52 Start: 37531, Stop: 38349, Start Num: 25

Candidate Starts for Niklas_52:

(5, 37291), (23, 37501), (Start: 25 @37531 has 111 MA's), (Start: 47 @37654 has 1 MA's), (61, 37729), (63, 37738), (70, 37780), (75, 37816), (77, 37828), (79, 37852), (86, 37912), (98, 37987), (108, 38047), (112, 38065), (113, 38089), (116, 38122), (120, 38140), (122, 38155), (135, 38236), (136, 38239), (138, 38266), (141, 38278),

Gene: November_50 Start: 37410, Stop: 38198, Start Num: 25

Candidate Starts for November_50:

(2, 37119), (20, 37341), (Start: 25 @37410 has 111 MA's), (Start: 47 @37533 has 1 MA's), (57, 37563), (61, 37587), (63, 37596), (70, 37638), (71, 37647), (75, 37671), (79, 37707), (86, 37767), (89, 37779),

(98, 37842), (106, 37887), (108, 37902), (110, 37908), (113, 37944), (117, 37980), (122, 38010), (135, 38091), (136, 38094), (138, 38121), (141, 38133),

Gene: Nutello_45 Start: 36225, Stop: 37043, Start Num: 25

Candidate Starts for Nutello_45:

(Start: 25 @36225 has 111 MA's), (Start: 47 @36348 has 1 MA's), (61, 36423), (63, 36432), (70, 36474), (75, 36510), (77, 36522), (79, 36546), (87, 36612), (98, 36681), (99, 36684), (113, 36783), (120, 36834), (122, 36849), (124, 36873), (125, 36876), (135, 36933), (136, 36936),

Gene: OkiRoe_45 Start: 35321, Stop: 36079, Start Num: 39

Candidate Starts for OkiRoe_45:

(Start: 39 @35321 has 7 MA's), (Start: 41 @35348 has 18 MA's), (60, 35456), (61, 35468), (77, 35564), (79, 35588), (86, 35648), (89, 35660), (95, 35705), (98, 35723), (101, 35747), (106, 35774), (121, 35888), (122, 35897), (123, 35900), (137, 35987), (143, 36026),

Gene: OmniCritical_55 Start: 38192, Stop: 38884, Start Num: 48

Candidate Starts for OmniCritical_55:

(Start: 48 @38192 has 21 MA's), (Start: 49 @38195 has 1 MA's), (58, 38255), (59, 38258), (61, 38276), (71, 38333), (74, 38345), (84, 38447), (86, 38453), (96, 38516), (110, 38597), (112, 38609), (115, 38654), (120, 38684), (122, 38699), (126, 38732), (129, 38744), (130, 38753), (137, 38801), (143, 38840),

Gene: Omnicron_48 Start: 34963, Stop: 35694, Start Num: 41

Candidate Starts for Omnicron_48:

(Start: 41 @34963 has 18 MA's), (Start: 44 @34981 has 10 MA's), (77, 35179), (79, 35203), (83, 35254), (85, 35260), (101, 35362), (106, 35389), (121, 35503), (122, 35512), (127, 35548), (137, 35602), (138, 35614), (143, 35641),

Gene: Oscar_54 Start: 37872, Stop: 38576, Start Num: 46

Candidate Starts for Oscar_54:

(9, 37548), (11, 37554), (40, 37836), (Start: 46 @37872 has 32 MA's), (50, 37896), (61, 37959), (63, 37968), (71, 38019), (75, 38043), (77, 38055), (79, 38079), (98, 38214), (106, 38259), (113, 38316), (120, 38367), (124, 38406), (135, 38466), (136, 38469), (141, 38508),

Gene: Padfoot_49 Start: 36880, Stop: 37671, Start Num: 25

Candidate Starts for Padfoot_49:

(Start: 25 @36880 has 111 MA's), (32, 36916), (Start: 47 @37003 has 1 MA's), (61, 37057), (63, 37066), (70, 37108), (71, 37117), (78, 37156), (79, 37177), (87, 37243), (89, 37249), (106, 37357), (113, 37414), (122, 37480), (136, 37567), (138, 37594), (141, 37606), (145, 37660),

Gene: Padpat_51 Start: 36559, Stop: 37350, Start Num: 25

Candidate Starts for Padpat_51:

(Start: 25 @36559 has 111 MA's), (32, 36595), (Start: 47 @36682 has 1 MA's), (61, 36736), (63, 36745), (70, 36787), (71, 36796), (78, 36835), (79, 36856), (87, 36922), (89, 36928), (106, 37036), (113, 37093), (122, 37159), (135, 37243), (136, 37246), (138, 37273), (141, 37285),

Gene: Paola_45 Start: 35346, Stop: 36077, Start Num: 41

Candidate Starts for Paola_45:

(Start: 39 @35319 has 7 MA's), (Start: 41 @35346 has 18 MA's), (60, 35454), (61, 35466), (77, 35562), (79, 35586), (86, 35646), (89, 35658), (95, 35703), (98, 35721), (101, 35745), (106, 35772), (121, 35886), (122, 35895), (123, 35898), (137, 35985), (143, 36024),

Gene: Patt_53 Start: 37460, Stop: 38152, Start Num: 48

Candidate Starts for Patt_53:

(Start: 48 @37460 has 21 MA's), (58, 37523), (61, 37544), (74, 37613), (77, 37634), (78, 37637), (84, 37715), (86, 37721), (96, 37784), (110, 37865), (115, 37922), (120, 37952), (122, 37967), (126, 38000), (129, 38012), (130, 38021), (137, 38069), (143, 38108),

Gene: Peanam_52 Start: 37489, Stop: 38307, Start Num: 25

Candidate Starts for Peanam_52:

(5, 37249), (23, 37459), (Start: 25 @37489 has 111 MA's), (Start: 47 @37612 has 1 MA's), (61, 37687), (63, 37696), (70, 37738), (75, 37774), (77, 37786), (79, 37810), (86, 37870), (98, 37945), (108, 38005), (112, 38023), (113, 38047), (116, 38080), (120, 38098), (122, 38113), (135, 38194), (136, 38197), (138, 38224), (141, 38236),

Gene: Peel_49 Start: 36685, Stop: 37476, Start Num: 25

Candidate Starts for Peel_49:

(Start: 25 @36685 has 111 MA's), (32, 36721), (Start: 47 @36808 has 1 MA's), (61, 36862), (63, 36871), (70, 36913), (71, 36922), (78, 36961), (79, 36982), (87, 37048), (89, 37054), (106, 37162), (113, 37219), (122, 37285), (136, 37372), (138, 37399), (141, 37411), (145, 37465),

Gene: Pharb_49 Start: 36008, Stop: 36685, Start Num: 46

Candidate Starts for Pharb_49:

(28, 35906), (40, 35972), (Start: 46 @36008 has 32 MA's), (61, 36083), (70, 36134), (77, 36179), (79, 36203), (86, 36263), (88, 36272), (93, 36314), (98, 36338), (101, 36362), (103, 36371), (112, 36416), (113, 36440), (117, 36476), (118, 36485), (124, 36530), (135, 36590), (136, 36593), (138, 36620),

Gene: PhelpsODU_52 Start: 36483, Stop: 37178, Start Num: 46

Candidate Starts for PhelpsODU_52:

(40, 36450), (Start: 46 @36483 has 32 MA's), (61, 36561), (63, 36570), (71, 36621), (79, 36681), (105, 36855), (107, 36864), (112, 36894), (113, 36918), (120, 36969), (122, 36984), (135, 37068), (136, 37071),

Gene: Phrank_53 Start: 36440, Stop: 37135, Start Num: 46

Candidate Starts for Phrank_53:

(40, 36407), (Start: 46 @36440 has 32 MA's), (61, 36518), (63, 36527), (70, 36569), (79, 36638), (105, 36812), (107, 36821), (113, 36875), (120, 36926), (122, 36941), (135, 37025), (136, 37028),

Gene: Piatt_49 Start: 36880, Stop: 37671, Start Num: 25

Candidate Starts for Piatt_49:

(Start: 25 @36880 has 111 MA's), (32, 36916), (Start: 47 @37003 has 1 MA's), (61, 37057), (63, 37066), (70, 37108), (71, 37117), (78, 37156), (79, 37177), (87, 37243), (89, 37249), (106, 37357), (113, 37414), (122, 37480), (136, 37567), (138, 37594), (141, 37606), (145, 37660),

Gene: Pisa1_49 Start: 37836, Stop: 38630, Start Num: 25

Candidate Starts for Pisa1_49:

(Start: 25 @37836 has 111 MA's), (32, 37875), (Start: 47 @37962 has 1 MA's), (61, 38016), (63, 38025), (70, 38067), (78, 38115), (79, 38136), (87, 38202), (89, 38208), (106, 38316), (113, 38373), (122, 38439), (125, 38466), (133, 38514), (135, 38523), (136, 38526), (138, 38553), (141, 38565),

Gene: Pisa4_43 Start: 33205, Stop: 33999, Start Num: 25

Candidate Starts for Pisa4_43:

(Start: 25 @33205 has 111 MA's), (32, 33244), (Start: 47 @33331 has 1 MA's), (61, 33385), (63, 33394), (70, 33436), (78, 33484), (79, 33505), (87, 33571), (89, 33577), (106, 33685), (113, 33742), (122, 33808), (125, 33835), (133, 33883), (135, 33892), (136, 33895), (138, 33922), (141, 33934),

Gene: Pixie_51 Start: 36777, Stop: 37454, Start Num: 46

Candidate Starts for Pixie_51:

(Start: 46 @36777 has 32 MA's), (61, 36852), (70, 36903), (77, 36948), (79, 36972), (88, 37041), (93, 37083), (98, 37107), (103, 37140), (106, 37152), (112, 37185), (113, 37209), (121, 37266), (124, 37299), (136, 37362), (138, 37389), (139, 37395),

Gene: Pokerus_48 Start: 36606, Stop: 37397, Start Num: 25

Candidate Starts for Pokerus_48:

(Start: 25 @36606 has 111 MA's), (32, 36642), (Start: 47 @36729 has 1 MA's), (61, 36783), (63, 36792), (70, 36834), (71, 36843), (78, 36882), (79, 36903), (87, 36969), (89, 36975), (106, 37083), (112, 37116), (113, 37140), (122, 37206), (135, 37290), (136, 37293), (138, 37320), (141, 37332), (145, 37386),

Gene: Prithvi_50 Start: 36768, Stop: 37559, Start Num: 25

Candidate Starts for Prithvi_50:

(Start: 25 @36768 has 111 MA's), (32, 36804), (Start: 47 @36891 has 1 MA's), (61, 36945), (63, 36954), (70, 36996), (71, 37005), (78, 37044), (79, 37065), (87, 37131), (89, 37137), (106, 37245), (113, 37302), (122, 37368), (129, 37413), (135, 37452), (136, 37455), (138, 37482), (141, 37494), (145, 37548),

Gene: Psycho_45 Start: 35482, Stop: 36237, Start Num: 39

Candidate Starts for Psycho_45:

(Start: 39 @35482 has 7 MA's), (Start: 41 @35509 has 18 MA's), (61, 35632), (76, 35719), (77, 35728), (85, 35809), (88, 35821), (89, 35824), (117, 36031), (121, 36052), (122, 36061), (124, 36085), (137, 36151), (138, 36163), (143, 36190),

Gene: Qhanda_58 Start: 38220, Stop: 38912, Start Num: 48

Candidate Starts for Qhanda_58:

(Start: 48 @38220 has 21 MA's), (Start: 49 @38223 has 1 MA's), (58, 38283), (59, 38286), (61, 38304), (71, 38361), (74, 38373), (84, 38475), (86, 38481), (96, 38544), (110, 38625), (112, 38637), (115, 38682), (120, 38712), (122, 38727), (126, 38760), (129, 38772), (130, 38781), (137, 38829), (143, 38868),

Gene: QuincyRose_48 Start: 36998, Stop: 37789, Start Num: 25

Candidate Starts for QuincyRose_48:

(Start: 25 @36998 has 111 MA's), (32, 37034), (Start: 47 @37121 has 1 MA's), (57, 37151), (61, 37175), (63, 37184), (70, 37226), (71, 37235), (78, 37274), (79, 37295), (87, 37361), (89, 37367), (106, 37475), (113, 37532), (117, 37568), (122, 37598), (135, 37682), (136, 37685), (138, 37712), (141, 37724), (145, 37778),

Gene: Ramen_50 Start: 36570, Stop: 37361, Start Num: 25

Candidate Starts for Ramen_50:

(Start: 25 @36570 has 111 MA's), (32, 36606), (Start: 47 @36693 has 1 MA's), (61, 36747), (63, 36756), (70, 36798), (71, 36807), (78, 36846), (79, 36867), (87, 36933), (89, 36939), (106, 37047), (113, 37104), (122, 37170), (131, 37230), (135, 37254), (136, 37257), (141, 37296), (145, 37350),

Gene: Rando14_47 Start: 34531, Stop: 35259, Start Num: 41

Candidate Starts for Rando14_47:

(Start: 41 @34531 has 18 MA's), (Start: 44 @34549 has 10 MA's), (77, 34747), (79, 34771), (83, 34822), (85, 34828), (101, 34930), (106, 34957), (119, 35062), (121, 35071), (122, 35080), (123, 35083), (137, 35170), (138, 35182),

Gene: Rapunzel97_50 Start: 36566, Stop: 37357, Start Num: 25

Candidate Starts for Rapunzel97_50:

(Start: 25 @36566 has 111 MA's), (32, 36602), (Start: 47 @36689 has 1 MA's), (61, 36743), (63, 36752), (70, 36794), (71, 36803), (78, 36842), (79, 36863), (87, 36929), (89, 36935), (106, 37043), (113, 37100), (122, 37166), (135, 37250), (136, 37253), (138, 37280), (141, 37292), (145, 37346),

Gene: Reptar3000_54 Start: 37448, Stop: 38140, Start Num: 48

Candidate Starts for Reptar3000_54:

(Start: 48 @37448 has 21 MA's), (58, 37511), (61, 37532), (74, 37601), (77, 37622), (78, 37625), (84, 37703), (86, 37709), (96, 37772), (110, 37853), (115, 37910), (120, 37940), (122, 37955), (126, 37988), (129, 38000), (130, 38009), (137, 38057), (143, 38096),

Gene: Richo_52 Start: 37470, Stop: 38288, Start Num: 25

Candidate Starts for Richo_52:

(5, 37230), (23, 37440), (Start: 25 @37470 has 111 MA's), (Start: 47 @37593 has 1 MA's), (61, 37668), (63, 37677), (70, 37719), (75, 37755), (77, 37767), (79, 37791), (86, 37851), (98, 37926), (108, 37986), (112, 38004), (113, 38028), (116, 38061), (120, 38079), (122, 38094), (135, 38175), (136, 38178), (138, 38205), (141, 38217),

Gene: Rosmarinus_49 Start: 36671, Stop: 37462, Start Num: 25

Candidate Starts for Rosmarinus_49:

(Start: 25 @36671 has 111 MA's), (32, 36707), (Start: 47 @36794 has 1 MA's), (61, 36848), (63, 36857), (70, 36899), (71, 36908), (78, 36947), (79, 36968), (87, 37034), (89, 37040), (106, 37148), (113, 37205), (122, 37271), (136, 37358), (138, 37385), (141, 37397), (145, 37451),

Gene: Ruthiejr_57 Start: 38254, Stop: 38946, Start Num: 48

Candidate Starts for Ruthiejr_57:

(Start: 48 @38254 has 21 MA's), (Start: 49 @38257 has 1 MA's), (58, 38317), (59, 38320), (61, 38338), (71, 38395), (74, 38407), (84, 38509), (86, 38515), (96, 38578), (110, 38659), (112, 38671), (115, 38716), (117, 38731), (120, 38746), (122, 38761), (126, 38794), (129, 38806), (130, 38815), (137, 38863), (143, 38902),

Gene: SamScheppers_54 Start: 38683, Stop: 39375, Start Num: 48

Candidate Starts for SamScheppers_54:

(Start: 48 @38683 has 21 MA's), (Start: 49 @38686 has 1 MA's), (58, 38746), (59, 38749), (61, 38767), (71, 38824), (74, 38836), (84, 38938), (86, 38944), (96, 39007), (110, 39088), (112, 39100), (115, 39145), (120, 39175), (122, 39190), (126, 39223), (129, 39235), (130, 39244), (137, 39292), (143, 39331),

Gene: SamuelLPlaqson_50 Start: 37454, Stop: 38245, Start Num: 25

Candidate Starts for SamuelLPlaqson_50:

(Start: 25 @37454 has 111 MA's), (32, 37490), (Start: 47 @37577 has 1 MA's), (61, 37631), (63, 37640), (70, 37682), (71, 37691), (72, 37694), (75, 37715), (79, 37751), (87, 37817), (89, 37823), (106, 37931), (113, 37988), (122, 38054), (125, 38081), (135, 38138), (136, 38141), (138, 38168), (141, 38180), (145, 38234),

Gene: Scarlett_54 Start: 37864, Stop: 38568, Start Num: 46

Candidate Starts for Scarlett_54:

(9, 37540), (11, 37546), (40, 37828), (Start: 46 @37864 has 32 MA's), (50, 37888), (61, 37951), (63, 37960), (70, 38002), (71, 38011), (75, 38035), (77, 38047), (79, 38071), (98, 38206), (106, 38251), (113, 38308), (120, 38359), (124, 38398), (135, 38458), (136, 38461), (141, 38500),

Gene: SgtBeansprout_45 Start: 36225, Stop: 37043, Start Num: 25

Candidate Starts for SgtBeansprout_45:

(Start: 25 @36225 has 111 MA's), (Start: 47 @36348 has 1 MA's), (61, 36423), (63, 36432), (70, 36474), (75, 36510), (77, 36522), (79, 36546), (87, 36612), (98, 36681), (99, 36684), (113, 36783), (120, 36834), (122, 36849), (124, 36873), (125, 36876), (135, 36933), (136, 36936),

Gene: Shadow1_55 Start: 37601, Stop: 38293, Start Num: 46

Candidate Starts for Shadow1_55:

(40, 37568), (Start: 46 @37601 has 32 MA's), (61, 37679), (63, 37688), (70, 37730), (77, 37775), (79, 37799), (105, 37973), (107, 37982), (116, 38069), (120, 38087), (122, 38102), (135, 38186), (136, 38189),

Gene: Shaobing_52 Start: 37507, Stop: 38325, Start Num: 25

Candidate Starts for Shaobing_52:

(5, 37267), (23, 37477), (Start: 25 @37507 has 111 MA's), (Start: 47 @37630 has 1 MA's), (61, 37705), (63, 37714), (70, 37756), (75, 37792), (77, 37804), (79, 37828), (86, 37888), (98, 37963), (108, 38023), (112, 38041), (113, 38065), (116, 38098), (120, 38116), (122, 38131), (128, 38173), (135, 38212), (136, 38215), (138, 38242), (141, 38254),

Gene: ShedlockHolmes_53 Start: 37302, Stop: 37979, Start Num: 46

Candidate Starts for ShedlockHolmes_53:

(Start: 46 @37302 has 32 MA's), (61, 37377), (70, 37428), (77, 37473), (79, 37497), (88, 37566), (93, 37608), (98, 37632), (103, 37665), (106, 37677), (112, 37710), (113, 37734), (121, 37791), (124, 37824), (138, 37914), (139, 37920),

Gene: ShiaSurprise_50 Start: 36880, Stop: 37671, Start Num: 25

Candidate Starts for ShiaSurprise_50:

(Start: 25 @36880 has 111 MA's), (32, 36916), (Start: 47 @37003 has 1 MA's), (61, 37057), (63, 37066), (70, 37108), (71, 37117), (78, 37156), (79, 37177), (87, 37243), (89, 37249), (106, 37357), (113, 37414), (122, 37480), (136, 37567), (138, 37594), (141, 37606), (145, 37660),

Gene: SirPhilip_52 Start: 37984, Stop: 38682, Start Num: 46

Candidate Starts for SirPhilip_52:

(17, 37723), (40, 37945), (Start: 46 @37984 has 32 MA's), (Start: 51 @38011 has 1 MA's), (61, 38071), (63, 38080), (70, 38122), (71, 38131), (77, 38167), (79, 38191), (86, 38251), (89, 38263), (98, 38326), (113, 38428), (118, 38473), (135, 38575), (141, 38617),

Gene: Slarp_56 Start: 38211, Stop: 38903, Start Num: 48

Candidate Starts for Slarp_56:

(Start: 48 @38211 has 21 MA's), (Start: 49 @38214 has 1 MA's), (58, 38274), (59, 38277), (61, 38295), (71, 38352), (74, 38364), (84, 38466), (86, 38472), (96, 38535), (110, 38616), (112, 38628), (115, 38673), (120, 38703), (122, 38718), (126, 38751), (129, 38763), (130, 38772), (137, 38820), (143, 38859),

Gene: Slimphazie_49 Start: 36566, Stop: 37357, Start Num: 25

Candidate Starts for Slimphazie_49:

(Start: 25 @36566 has 111 MA's), (32, 36602), (Start: 47 @36689 has 1 MA's), (61, 36743), (63, 36752), (70, 36794), (71, 36803), (78, 36842), (79, 36863), (87, 36929), (89, 36935), (106, 37043), (113, 37100), (122, 37166), (135, 37250), (136, 37253), (138, 37280), (141, 37292), (145, 37346),

Gene: SoSeph_45 Start: 35496, Stop: 36227, Start Num: 41

Candidate Starts for SoSeph_45:

(Start: 39 @35469 has 7 MA's), (Start: 41 @35496 has 18 MA's), (60, 35604), (61, 35616), (77, 35712), (79, 35736), (86, 35796), (89, 35808), (98, 35871), (101, 35895), (106, 35922), (119, 36027), (121, 36036), (122, 36045), (123, 36048), (137, 36135), (143, 36174),

Gene: Spock_49 Start: 36684, Stop: 37475, Start Num: 25

Candidate Starts for Spock_49:

(Start: 25 @36684 has 111 MA's), (32, 36720), (Start: 47 @36807 has 1 MA's), (61, 36861), (63, 36870), (70, 36912), (71, 36921), (78, 36960), (79, 36981), (87, 37047), (89, 37053), (106, 37161), (113, 37218), (122, 37284), (136, 37371), (138, 37398), (141, 37410), (145, 37464),

Gene: Stinson_50 Start: 37058, Stop: 37849, Start Num: 25

Candidate Starts for Stinson_50:

(Start: 25 @37058 has 111 MA's), (32, 37094), (Start: 47 @37181 has 1 MA's), (61, 37235), (63, 37244), (70, 37286), (71, 37295), (78, 37334), (79, 37355), (87, 37421), (89, 37427), (106, 37535), (112, 37568), (113, 37592), (122, 37658), (125, 37685), (136, 37745), (138, 37772), (141, 37784),

Gene: Strobilo_53 Start: 38797, Stop: 39537, Start Num: 44

Candidate Starts for Strobilo_53:

(31, 38719), (Start: 44 @38797 has 10 MA's), (Start: 52 @38848 has 1 MA's), (59, 38887), (61, 38905), (70, 38956), (77, 39001), (79, 39025), (84, 39079), (98, 39160), (101, 39184), (102, 39193), (106, 39211), (112, 39244), (115, 39289), (120, 39319), (122, 39334), (124, 39364), (138, 39451), (145, 39526),

Gene: Sulley_49 Start: 36810, Stop: 37601, Start Num: 25

Candidate Starts for Sulley_49:

(Start: 25 @36810 has 111 MA's), (32, 36846), (Start: 47 @36933 has 1 MA's), (63, 36996), (70, 37038), (71, 37047), (78, 37086), (79, 37107), (87, 37173), (89, 37179), (106, 37287), (113, 37344), (122, 37410), (135, 37494), (138, 37524), (141, 37536), (145, 37590),

Gene: Sunflower1121_56 Start: 37702, Stop: 38394, Start Num: 46

Candidate Starts for Sunflower1121_56:

(40, 37669), (Start: 46 @37702 has 32 MA's), (61, 37780), (63, 37789), (70, 37831), (77, 37876), (79, 37900), (105, 38074), (107, 38083), (113, 38137), (116, 38170), (120, 38188), (122, 38203), (135, 38287), (136, 38290),

Gene: Syra333_55 Start: 37366, Stop: 38058, Start Num: 46

Candidate Starts for Syra333_55:

(Start: 46 @37366 has 32 MA's), (61, 37444), (63, 37453), (70, 37495), (77, 37540), (79, 37564), (105, 37738), (107, 37747), (113, 37801), (117, 37837), (120, 37852), (122, 37867), (135, 37951), (136, 37954),

Gene: TBond007_50 Start: 36776, Stop: 37453, Start Num: 46

Candidate Starts for TBond007_50:

(Start: 46 @36776 has 32 MA's), (61, 36851), (70, 36902), (77, 36947), (79, 36971), (88, 37040), (93, 37082), (98, 37106), (103, 37139), (106, 37151), (112, 37184), (113, 37208), (121, 37265), (124, 37298), (136, 37361), (138, 37388), (139, 37394),

Gene: TClif_53 Start: 37733, Stop: 38428, Start Num: 46

Candidate Starts for TClif_53:

(40, 37700), (Start: 46 @37733 has 32 MA's), (61, 37811), (63, 37820), (70, 37862), (71, 37871), (75, 37895), (79, 37931), (98, 38066), (113, 38168), (117, 38204), (122, 38234), (123, 38237), (135, 38318), (136, 38321), (141, 38360),

Gene: TM4_48 Start: 33177, Stop: 33917, Start Num: 44

Candidate Starts for TM4_48:

(Start: 44 @33177 has 10 MA's), (Start: 52 @33228 has 1 MA's), (59, 33267), (61, 33285), (70, 33336), (77, 33381), (79, 33405), (84, 33459), (98, 33540), (101, 33564), (106, 33591), (112, 33624), (113, 33648), (115, 33669), (120, 33699), (122, 33714), (124, 33744), (137, 33819), (138, 33831), (145, 33906),

Gene: Tachez_49 Start: 36528, Stop: 37319, Start Num: 25

Candidate Starts for Tachez_49:

(Start: 25 @36528 has 111 MA's), (32, 36564), (Start: 47 @36651 has 1 MA's), (61, 36705), (63, 36714), (70, 36756), (71, 36765), (78, 36804), (79, 36825), (87, 36891), (89, 36897), (106, 37005), (113, 37062), (122, 37128), (135, 37212), (136, 37215), (138, 37242), (141, 37254), (145, 37308),

Gene: TaiwanKao_51 Start: 36824, Stop: 37615, Start Num: 25

Candidate Starts for TaiwanKao_51:

(Start: 25 @36824 has 111 MA's), (32, 36860), (Start: 47 @36947 has 1 MA's), (61, 37001), (63, 37010), (67, 37025), (70, 37052), (71, 37061), (72, 37064), (78, 37100), (79, 37121), (87, 37187), (89, 37193), (106, 37301), (113, 37358), (122, 37424), (135, 37508), (136, 37511), (138, 37538), (141, 37550), (145, 37604),

Gene: Taquito_56 Start: 38539, Stop: 39231, Start Num: 48

Candidate Starts for Taquito_56:

(Start: 48 @38539 has 21 MA's), (Start: 49 @38542 has 1 MA's), (58, 38602), (59, 38605), (61, 38623), (71, 38680), (74, 38692), (84, 38794), (86, 38800), (96, 38863), (110, 38944), (112, 38956), (115, 39001), (120, 39031), (122, 39046), (126, 39079), (129, 39091), (130, 39100), (137, 39148), (143, 39187),

Gene: Teejan_47 Start: 38838, Stop: 39656, Start Num: 25

Candidate Starts for Teejan_47:

(Start: 25 @38838 has 111 MA's), (Start: 47 @38961 has 1 MA's), (61, 39036), (63, 39045), (70, 39087), (75, 39123), (77, 39135), (79, 39159), (87, 39225), (98, 39294), (99, 39297), (113, 39396), (120, 39447), (122, 39462), (124, 39486), (125, 39489), (135, 39546), (136, 39549),

Gene: Thyatira_48 Start: 37698, Stop: 38429, Start Num: 41

Candidate Starts for Thyatira_48:

(Start: 39 @37671 has 7 MA's), (Start: 41 @37698 has 18 MA's), (60, 37806), (61, 37818), (77, 37914), (79, 37938), (86, 37998), (89, 38010), (98, 38073), (101, 38097), (106, 38124), (121, 38238), (122, 38247), (123, 38250), (137, 38337), (143, 38376),

Gene: Tierra_53 Start: 37251, Stop: 37946, Start Num: 46

Candidate Starts for Tierra_53:

(40, 37218), (Start: 46 @37251 has 32 MA's), (61, 37329), (63, 37338), (70, 37380), (79, 37449), (105, 37623), (107, 37632), (113, 37686), (120, 37737), (122, 37752), (135, 37836), (136, 37839),

Gene: Tigress9_55 Start: 37456, Stop: 38148, Start Num: 46

Candidate Starts for Tigress9_55:

(40, 37423), (Start: 46 @37456 has 32 MA's), (61, 37534), (63, 37543), (70, 37585), (71, 37594), (77, 37630), (79, 37654), (105, 37828), (107, 37837), (113, 37891), (116, 37924), (120, 37942), (122, 37957), (135, 38041), (136, 38044),

Gene: TingHuaYa_50 Start: 35609, Stop: 36400, Start Num: 25

Candidate Starts for TingHuaYa_50:

(23, 35573), (Start: 25 @35609 has 111 MA's), (38, 35672), (Start: 47 @35732 has 1 MA's), (61, 35786), (63, 35795), (70, 35837), (77, 35882), (78, 35885), (79, 35906), (87, 35972), (113, 36143), (122, 36209), (135, 36293), (136, 36296), (141, 36335),

Gene: TiniBug_50 Start: 37450, Stop: 38241, Start Num: 25

Candidate Starts for TiniBug_50:

(Start: 25 @37450 has 111 MA's), (32, 37486), (Start: 47 @37573 has 1 MA's), (61, 37627), (63, 37636), (70, 37678), (71, 37687), (72, 37690), (75, 37711), (79, 37747), (87, 37813), (89, 37819), (106, 37927), (113, 37984), (122, 38050), (125, 38077), (135, 38134), (136, 38137), (138, 38164), (141, 38176), (145, 38230),

Gene: Tiri_50 Start: 36858, Stop: 37649, Start Num: 25

Candidate Starts for Tiri_50:

(Start: 25 @36858 has 111 MA's), (32, 36894), (Start: 47 @36981 has 1 MA's), (61, 37035), (63, 37044), (70, 37086), (71, 37095), (78, 37134), (79, 37155), (87, 37221), (89, 37227), (106, 37335), (113, 37392), (122, 37458), (135, 37542), (136, 37545), (138, 37572), (141, 37584), (145, 37638),

Gene: Topper_49 Start: 36683, Stop: 37474, Start Num: 25

Candidate Starts for Topper_49:

(Start: 25 @36683 has 111 MA's), (32, 36719), (Start: 47 @36806 has 1 MA's), (61, 36860), (63, 36869), (70, 36911), (71, 36920), (78, 36959), (79, 36980), (87, 37046), (89, 37052), (106, 37160), (113, 37217), (122, 37283), (136, 37370), (138, 37397), (141, 37409), (145, 37463),

Gene: Torres_48 Start: 38839, Stop: 39657, Start Num: 25

Candidate Starts for Torres_48:

(Start: 25 @38839 has 111 MA's), (Start: 47 @38962 has 1 MA's), (61, 39037), (63, 39046), (70, 39088), (75, 39124), (77, 39136), (79, 39160), (87, 39226), (98, 39295), (99, 39298), (113, 39397), (120, 39448), (122, 39463), (124, 39487), (125, 39490), (135, 39547), (136, 39550),

Gene: TreyKay_50 Start: 36768, Stop: 37559, Start Num: 25

Candidate Starts for TreyKay_50:

(Start: 25 @36768 has 111 MA's), (32, 36804), (Start: 47 @36891 has 1 MA's), (61, 36945), (63, 36954), (70, 36996), (71, 37005), (78, 37044), (79, 37065), (87, 37131), (89, 37137), (106, 37245), (113, 37302), (122, 37368), (129, 37413), (135, 37452), (136, 37455), (138, 37482), (141, 37494), (145, 37548),

Gene: TribbleTrouble_49 Start: 36661, Stop: 37338, Start Num: 46

Candidate Starts for TribbleTrouble_49:

(28, 36556), (Start: 46 @36661 has 32 MA's), (61, 36736), (70, 36787), (77, 36832), (79, 36856), (88, 36925), (93, 36967), (98, 36991), (103, 37024), (106, 37036), (112, 37069), (113, 37093), (122, 37159), (136, 37246), (138, 37273),

Gene: Trice_45 Start: 36226, Stop: 37044, Start Num: 25

Candidate Starts for Trice_45:

(Start: 25 @36226 has 111 MA's), (Start: 47 @36349 has 1 MA's), (61, 36424), (63, 36433), (70, 36475), (75, 36511), (77, 36523), (79, 36547), (87, 36613), (98, 36682), (99, 36685), (113, 36784), (120, 36835), (122, 36850), (124, 36874), (125, 36877), (135, 36934), (136, 36937),

Gene: TruffulaTree_49 Start: 36562, Stop: 37353, Start Num: 25

Candidate Starts for TruffulaTree_49:

(Start: 25 @36562 has 111 MA's), (32, 36598), (Start: 47 @36685 has 1 MA's), (61, 36739), (63, 36748), (70, 36790), (71, 36799), (78, 36838), (79, 36859), (87, 36925), (89, 36931), (106, 37039), (113, 37096), (122, 37162), (135, 37246), (136, 37249), (138, 37276), (141, 37288), (145, 37342),

Gene: Twitch_49 Start: 36685, Stop: 37476, Start Num: 25

Candidate Starts for Twitch_49:

(Start: 25 @36685 has 111 MA's), (32, 36721), (Start: 47 @36808 has 1 MA's), (61, 36862), (63, 36871), (70, 36913), (71, 36922), (78, 36961), (79, 36982), (87, 37048), (89, 37054), (106, 37162), (113, 37219), (122, 37285), (136, 37372), (138, 37399), (141, 37411), (145, 37465),

Gene: Unicorn_52 Start: 36483, Stop: 37178, Start Num: 46

Candidate Starts for Unicorn_52:

(40, 36450), (Start: 46 @36483 has 32 MA's), (61, 36561), (63, 36570), (71, 36621), (79, 36681), (105, 36855), (107, 36864), (112, 36894), (113, 36918), (120, 36969), (122, 36984), (135, 37068), (136, 37071),

Gene: Urkel_50 Start: 37454, Stop: 38245, Start Num: 25

Candidate Starts for Urkel_50:

(Start: 25 @37454 has 111 MA's), (32, 37490), (Start: 47 @37577 has 1 MA's), (61, 37631), (63, 37640), (70, 37682), (71, 37691), (72, 37694), (75, 37715), (79, 37751), (87, 37817), (89, 37823), (106, 37931), (113, 37988), (122, 38054), (125, 38081), (135, 38138), (136, 38141), (138, 38168), (141, 38180), (145, 38234),

Gene: Validus_54 Start: 37554, Stop: 38354, Start Num: 25

Candidate Starts for Validus_54:

(20, 37494), (23, 37524), (Start: 25 @37554 has 111 MA's), (36, 37611), (Start: 46 @37674 has 32 MA's), (61, 37740), (63, 37749), (70, 37791), (79, 37863), (88, 37932), (98, 37998), (108, 38058), (112, 38076), (113, 38100), (120, 38151), (135, 38250), (136, 38253), (138, 38280), (141, 38292),

Gene: Veliki_50 Start: 36602, Stop: 37393, Start Num: 25

Candidate Starts for Veliki_50:

(Start: 25 @36602 has 111 MA's), (32, 36638), (Start: 47 @36725 has 1 MA's), (61, 36779), (63, 36788), (70, 36830), (71, 36839), (78, 36878), (79, 36899), (87, 36965), (89, 36971), (106, 37079), (113, 37136), (122, 37202), (135, 37286), (136, 37289), (138, 37316), (141, 37328), (145, 37382),

Gene: ViviJ_46 Start: 35417, Stop: 36145, Start Num: 41

Candidate Starts for ViviJ_46:

(Start: 39 @35390 has 7 MA's), (Start: 41 @35417 has 18 MA's), (56, 35510), (61, 35540), (71, 35600), (76, 35627), (77, 35636), (85, 35717), (88, 35729), (89, 35732), (117, 35939), (121, 35960), (122, 35969), (124, 35993), (137, 36059), (138, 36071), (143, 36098),

Gene: Waterfoul_46 Start: 35589, Stop: 36320, Start Num: 41

Candidate Starts for Waterfoul_46:

(Start: 39 @35562 has 7 MA's), (Start: 41 @35589 has 18 MA's), (60, 35697), (61, 35709), (77, 35805), (79, 35829), (86, 35889), (89, 35901), (98, 35964), (106, 36015), (121, 36129), (122, 36138), (123, 36141), (137, 36228), (143, 36267),

Gene: Wintermute_56 Start: 38441, Stop: 39133, Start Num: 48

Candidate Starts for Wintermute_56:

(Start: 48 @38441 has 21 MA's), (Start: 49 @38444 has 1 MA's), (58, 38504), (59, 38507), (61, 38525), (71, 38582), (74, 38594), (84, 38696), (86, 38702), (96, 38765), (110, 38846), (112, 38858), (115, 38903), (120, 38933), (122, 38948), (126, 38981), (129, 38993), (130, 39002), (137, 39050), (143, 39089),

Gene: Ximenita_56 Start: 37555, Stop: 38247, Start Num: 46

Candidate Starts for Ximenita_56:

(40, 37522), (Start: 46 @37555 has 32 MA's), (61, 37633), (63, 37642), (70, 37684), (77, 37729), (79, 37753), (105, 37927), (107, 37936), (113, 37990), (116, 38023), (120, 38041), (122, 38056), (133, 38131), (135, 38140), (136, 38143),

Gene: Y10_55 Start: 38363, Stop: 39055, Start Num: 48

Candidate Starts for Y10_55:

(Start: 48 @38363 has 21 MA's), (Start: 49 @38366 has 1 MA's), (58, 38426), (59, 38429), (61, 38447), (71, 38504), (74, 38516), (84, 38618), (86, 38624), (96, 38687), (110, 38768), (112, 38780), (115, 38825), (117, 38840), (120, 38855), (122, 38870), (126, 38903), (129, 38915), (130, 38924), (137, 38972), (143, 39011),

Gene: Y2_55 Start: 38363, Stop: 39055, Start Num: 48

Candidate Starts for Y2_55:

(Start: 48 @38363 has 21 MA's), (Start: 49 @38366 has 1 MA's), (58, 38426), (59, 38429), (61, 38447), (71, 38504), (74, 38516), (84, 38618), (86, 38624), (96, 38687), (110, 38768), (112, 38780), (115, 38825), (117, 38840), (120, 38855), (122, 38870), (126, 38903), (129, 38915), (130, 38924), (137, 38972), (143, 39011),

Gene: YasnayaPolyana_56 Start: 38294, Stop: 38986, Start Num: 48

Candidate Starts for YasnayaPolyana_56:

(Start: 48 @38294 has 21 MA's), (Start: 49 @38297 has 1 MA's), (58, 38357), (59, 38360), (61, 38378), (71, 38435), (74, 38447), (84, 38549), (86, 38555), (96, 38618), (110, 38699), (112, 38711), (115, 38756), (120, 38786), (122, 38801), (126, 38834), (129, 38846), (130, 38855), (137, 38903), (143, 38942),

Gene: YoureAdopted_48 Start: 36767, Stop: 37558, Start Num: 25

Candidate Starts for YoureAdopted_48:

(Start: 25 @36767 has 111 MA's), (32, 36803), (Start: 47 @36890 has 1 MA's), (61, 36944), (63, 36953), (70, 36995), (71, 37004), (78, 37043), (79, 37064), (87, 37130), (89, 37136), (106, 37244), (113, 37301), (122, 37367), (135, 37451), (136, 37454), (138, 37481), (141, 37493), (145, 37547),

Gene: Yuna_56 Start: 38468, Stop: 39154, Start Num: 46

Candidate Starts for Yuna_56:

(Start: 46 @38468 has 32 MA's), (61, 38549), (63, 38558), (70, 38600), (71, 38609), (77, 38645), (79, 38669), (83, 38720), (113, 38906), (117, 38942), (118, 38951), (120, 38957), (122, 38972), (123, 38975), (135, 39050), (136, 39053), (141, 39092),

Gene: Yunkel11_52 Start: 36355, Stop: 37146, Start Num: 25

Candidate Starts for Yunkel11_52:

(Start: 25 @36355 has 111 MA's), (32, 36391), (Start: 47 @36478 has 1 MA's), (61, 36532), (63, 36541), (72, 36595), (75, 36616), (77, 36628), (79, 36652), (88, 36721), (113, 36889), (122, 36955), (135, 37039), (136, 37042), (138, 37069), (141, 37081),

Gene: Zabiza_44 Start: 32873, Stop: 33664, Start Num: 25

Candidate Starts for Zabiza_44:

(Start: 25 @32873 has 111 MA's), (32, 32909), (Start: 47 @32996 has 1 MA's), (61, 33050), (63, 33059), (70, 33101), (71, 33110), (78, 33149), (79, 33170), (87, 33236), (89, 33242), (106, 33350), (113, 33407), (122, 33473), (135, 33557), (136, 33560), (141, 33599), (145, 33653),

Gene: Zavala_51 Start: 36844, Stop: 37635, Start Num: 25

Candidate Starts for Zavala_51:

(Start: 25 @36844 has 111 MA's), (32, 36880), (Start: 47 @36967 has 1 MA's), (61, 37021), (63, 37030), (70, 37072), (71, 37081), (78, 37120), (79, 37141), (87, 37207), (89, 37213), (106, 37321), (113, 37378), (122, 37444), (136, 37531), (138, 37558), (141, 37570), (145, 37624),

Gene: ZoeJ_52 Start: 38268, Stop: 39008, Start Num: 44

Candidate Starts for ZoeJ_52:

(Start: 44 @38268 has 10 MA's), (Start: 52 @38319 has 1 MA's), (59, 38358), (61, 38376), (70, 38427), (77, 38472), (79, 38496), (84, 38550), (98, 38631), (101, 38655), (106, 38682), (112, 38715), (115, 38760), (120, 38790), (122, 38805), (124, 38835), (138, 38922), (145, 38997),