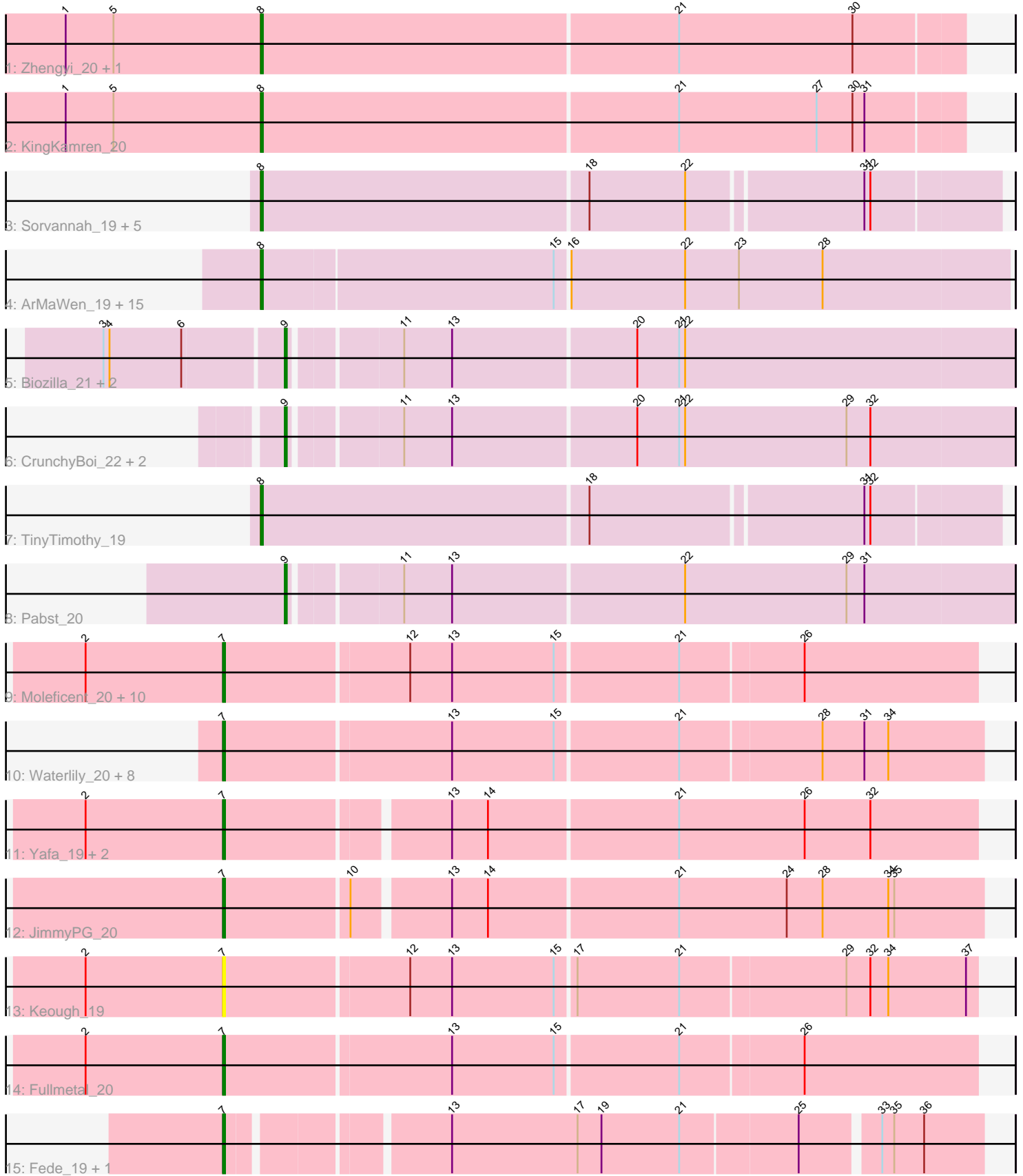


Pham 306474



Note: Tracks are now grouped by subcluster and scaled. Switching in subcluster is indicated by changes in track color. Track scale is now set by default to display the region 30 bp upstream of start 1 to 30 bp downstream of the last possible start. If this default region is judged to be packed too tightly with annotated starts, the track will be further scaled to only show that region of the ORF with annotated starts. This action will be indicated by adding "Zoomed" to the title. For starts, yellow indicates the location of called starts comprised solely of Glimmer/GeneMark auto-annotations, green indicates the location of called starts with at least 1 manual gene annotation.

Pham 306474 Report

This analysis was run 06/27/26 on database version 652.

Pham number 306474 has 61 members, 10 are drafts.

Phages represented in each track:

- Track 1 : Zhengyi_20, EugeneKrabs_20
- Track 2 : KingKamren_20
- Track 3 : Sorvannah_19, Salvatore2000_19, YellowPanda_20, Wesak_19, MiamiPanther_19, JessellCookie_19
- Track 4 : ArMaWen_19, BlueRugrat_19, LilyLou_20, Unphazed_20, Alex44_20, Birdfeeder_19, Conditioner_20, Corn21_20, Phogo_20, SwissCheezer_19, Stormbreaker_19, Dashyla_19, LesNorah_19, Xitlalli_19, DumpQuist_19, TownLake_19
- Track 5 : Biozilla_21, HitchHiker_22, Oatly_20
- Track 6 : CrunchyBoi_22, PineapplePluto_22, TicTac_21
- Track 7 : TinyTimothy_19
- Track 8 : Pabst_20
- Track 9 : Moleficient_20, PhriedRice_20, Phracted_20, Morrill_19, Pharky_20, Astartes_20, RicoCaldo_20, Mazun_21, StagePhright_20, Phedro_20, ThirteenKH_19
- Track 10 : Waterlily_20, Barroma_19, JordanFarm_20, ShyRosie_20, Truong_20, SoilSleuth_20, AloeVera_20, Akoni_20, Ashton_20
- Track 11 : Yafa_19, Atraxi_19, TrippleS_19
- Track 12 : JimmyPG_20
- Track 13 : Keough_19
- Track 14 : Fullmetal_20
- Track 15 : Fede_19, Kosier_19

Summary of Final Annotations (See graph section above for start numbers):

The start number called the most often in the published annotations is 7, it was called in 23 of the 51 non-draft genes in the pham.

Genes that call this "Most Annotated" start:

- Akoni_20, AloeVera_20, Ashton_20, Astartes_20, Atraxi_19, Barroma_19, Fede_19, Fullmetal_20, JimmyPG_20, JordanFarm_20, Keough_19, Kosier_19, Mazun_21, Moleficient_20, Morrill_19, Pharky_20, Phedro_20, Phracted_20, PhriedRice_20, RicoCaldo_20, ShyRosie_20, SoilSleuth_20, StagePhright_20, ThirteenKH_19, TrippleS_19, Truong_20, Waterlily_20, Yafa_19,

Genes that have the "Most Annotated" start but do not call it:

-

Genes that do not have the "Most Annotated" start:

- Alex44_20, ArMaWen_19, Biozilla_21, Birdfeeder_19, BlueRugrat_19, Conditioner_20, Corn21_20, CrunchyBoi_22, Dashyla_19, DumpQuist_19, EugeneKrabs_20, HitchHiker_22, JessellCookie_19, KingKamren_20, LesNorah_19, LilyLou_20, MiamiPanther_19, Oatly_20, Pabst_20, Phogo_20, PineapplePluto_22, Salvatore2000_19, Sorvannah_19, Stormbreaker_19, SwissCheezer_19, TicTac_21, TinyTimothy_19, TownLake_19, Unphazed_20, Wesak_19, Xitlalli_19, YellowPanda_20, Zhengyi_20,

Summary by start number:

Start 7:

- Found in 28 of 61 (45.9%) of genes in pham
- Manual Annotations of this start: 23 of 51
- Called 100.0% of time when present
- Phage (with cluster) where this start called: Akoni_20 (EK2), AloeVera_20 (EK2), Ashton_20 (EK2), Astartes_20 (EK2), Atraxi_19 (EK2), Barroma_19 (EK2), Fede_19 (EK2), Fullmetal_20 (EK2), JimmyPG_20 (EK2), JordanFarm_20 (EK2), Keough_19 (EK2), Kosier_19 (EK2), Mazun_21 (EK2), Moleficent_20 (EK2), Morrill_19 (EK2), Pharky_20 (EK2), Phedro_20 (EK2), Phracted_20 (EK2), PhriedRice_20 (EK2), RicoCaldo_20 (EK2), ShyRosie_20 (EK2), SoilSteuth_20 (EK2), StagePhright_20 (EK2), ThirteenKH_19 (EK2), TrippleS_19 (EK2), Truong_20 (EK2), Waterlily_20 (EK2), Yafa_19 (EK2),

Start 8:

- Found in 26 of 61 (42.6%) of genes in pham
- Manual Annotations of this start: 23 of 51
- Called 100.0% of time when present
- Phage (with cluster) where this start called: Alex44_20 (EK1), ArMaWen_19 (EK1), Birdfeeder_19 (EK1), BlueRugrat_19 (EK1), Conditioner_20 (EK1), Corn21_20 (EK1), Dashyla_19 (EK1), DumpQuist_19 (EK1), EugeneKrabs_20 (EK), JessellCookie_19 (EK1), KingKamren_20 (EK), LesNorah_19 (EK1), LilyLou_20 (EK1), MiamiPanther_19 (EK1), Phogo_20 (EK1), Salvatore2000_19 (EK1), Sorvannah_19 (EK1), Stormbreaker_19 (EK1), SwissCheezer_19 (EK1), TinyTimothy_19 (EK1), TownLake_19 (EK1), Unphazed_20 (EK1), Wesak_19 (EK1), Xitlalli_19 (EK1), YellowPanda_20 (EK1), Zhengyi_20 (EK),

Start 9:

- Found in 7 of 61 (11.5%) of genes in pham
- Manual Annotations of this start: 5 of 51
- Called 100.0% of time when present
- Phage (with cluster) where this start called: Biozilla_21 (EK1), CrunchyBoi_22 (EK1), HitchHiker_22 (EK1), Oatly_20 (EK1), Pabst_20 (EK1), PineapplePluto_22 (EK1), TicTac_21 (EK1),

Summary by clusters:

There are 3 clusters represented in this pham: EK, EK2, EK1,

Info for manual annotations of cluster EK:

- Start number 8 was manually annotated 3 times for cluster EK.

Info for manual annotations of cluster EK1:

- Start number 8 was manually annotated 20 times for cluster EK1.
- Start number 9 was manually annotated 5 times for cluster EK1.

Info for manual annotations of cluster EK2:

- Start number 7 was manually annotated 23 times for cluster EK2.

Gene Information:

Gene: Akoni_20 Start: 13361, Stop: 12990, Start Num: 7

Candidate Starts for Akoni_20:

(Start: 7 @13361 has 23 MA's), (13, 13250), (15, 13199), (21, 13139), (28, 13070), (31, 13049), (34, 13037),

Gene: Alex44_20 Start: 13172, Stop: 12804, Start Num: 8

Candidate Starts for Alex44_20:

(Start: 8 @13172 has 23 MA's), (15, 13028), (16, 13022), (22, 12965), (23, 12938), (28, 12896),

Gene: AloeVera_20 Start: 13361, Stop: 12990, Start Num: 7

Candidate Starts for AloeVera_20:

(Start: 7 @13361 has 23 MA's), (13, 13250), (15, 13199), (21, 13139), (28, 13070), (31, 13049), (34, 13037),

Gene: ArMaWen_19 Start: 12756, Stop: 12388, Start Num: 8

Candidate Starts for ArMaWen_19:

(Start: 8 @12756 has 23 MA's), (15, 12612), (16, 12606), (22, 12549), (23, 12522), (28, 12480),

Gene: Ashton_20 Start: 13365, Stop: 12994, Start Num: 7

Candidate Starts for Ashton_20:

(Start: 7 @13365 has 23 MA's), (13, 13254), (15, 13203), (21, 13143), (28, 13074), (31, 13053), (34, 13041),

Gene: Astartes_20 Start: 13448, Stop: 13080, Start Num: 7

Candidate Starts for Astartes_20:

(2, 13517), (Start: 7 @13448 has 23 MA's), (12, 13358), (13, 13337), (15, 13286), (21, 13226), (26, 13166),

Gene: Atraxi_19 Start: 13201, Stop: 12836, Start Num: 7

Candidate Starts for Atraxi_19:

(2, 13270), (Start: 7 @13201 has 23 MA's), (13, 13096), (14, 13078), (21, 12985), (26, 12922), (32, 12889),

Gene: Barroma_19 Start: 13361, Stop: 12990, Start Num: 7

Candidate Starts for Barroma_19:

(Start: 7 @13361 has 23 MA's), (13, 13250), (15, 13199), (21, 13139), (28, 13070), (31, 13049), (34, 13037),

Gene: Biozilla_21 Start: 13577, Stop: 13224, Start Num: 9

Candidate Starts for Biozilla_21:

(3, 13664), (4, 13661), (6, 13625), (Start: 9 @13577 has 5 MA's), (11, 13526), (13, 13502), (20, 13412), (21, 13391), (22, 13388),

Gene: Birdfeeder_19 Start: 13119, Stop: 12751, Start Num: 8

Candidate Starts for Birdfeeder_19:

(Start: 8 @13119 has 23 MA's), (15, 12975), (16, 12969), (22, 12912), (23, 12885), (28, 12843),

Gene: BlueRugrat_19 Start: 13190, Stop: 12822, Start Num: 8

Candidate Starts for BlueRugrat_19:

(Start: 8 @13190 has 23 MA's), (15, 13046), (16, 13040), (22, 12983), (23, 12956), (28, 12914),

Gene: Conditioner_20 Start: 13470, Stop: 13102, Start Num: 8

Candidate Starts for Conditioner_20:

(Start: 8 @13470 has 23 MA's), (15, 13326), (16, 13320), (22, 13263), (23, 13236), (28, 13194),

Gene: Corn21_20 Start: 13495, Stop: 13127, Start Num: 8

Candidate Starts for Corn21_20:

(Start: 8 @13495 has 23 MA's), (15, 13351), (16, 13345), (22, 13288), (23, 13261), (28, 13219),

Gene: CrunchyBoi_22 Start: 13526, Stop: 13173, Start Num: 9

Candidate Starts for CrunchyBoi_22:

(Start: 9 @13526 has 5 MA's), (11, 13475), (13, 13451), (20, 13361), (21, 13340), (22, 13337), (29, 13256), (32, 13244),

Gene: Dashyla_19 Start: 12769, Stop: 12401, Start Num: 8

Candidate Starts for Dashyla_19:

(Start: 8 @12769 has 23 MA's), (15, 12625), (16, 12619), (22, 12562), (23, 12535), (28, 12493),

Gene: DumpQuist_19 Start: 12759, Stop: 12391, Start Num: 8

Candidate Starts for DumpQuist_19:

(Start: 8 @12759 has 23 MA's), (15, 12615), (16, 12609), (22, 12552), (23, 12525), (28, 12483),

Gene: EugeneKrabs_20 Start: 14007, Stop: 13660, Start Num: 8

Candidate Starts for EugeneKrabs_20:

(1, 14103), (5, 14079), (Start: 8 @14007 has 23 MA's), (21, 13800), (30, 13713),

Gene: Fede_19 Start: 12583, Stop: 12227, Start Num: 7

Candidate Starts for Fede_19:

(Start: 7 @12583 has 23 MA's), (13, 12484), (17, 12421), (19, 12409), (21, 12370), (25, 12313), (33, 12277), (35, 12271), (36, 12256),

Gene: Fullmetal_20 Start: 13446, Stop: 13078, Start Num: 7

Candidate Starts for Fullmetal_20:

(2, 13515), (Start: 7 @13446 has 23 MA's), (13, 13335), (15, 13284), (21, 13224), (26, 13164),

Gene: HitchHiker_22 Start: 13577, Stop: 13224, Start Num: 9

Candidate Starts for HitchHiker_22:

(3, 13664), (4, 13661), (6, 13625), (Start: 9 @13577 has 5 MA's), (11, 13526), (13, 13502), (20, 13412), (21, 13391), (22, 13388),

Gene: JessellCookie_19 Start: 12871, Stop: 12512, Start Num: 8

Candidate Starts for JessellCookie_19:

(Start: 8 @12871 has 23 MA's), (18, 12709), (22, 12661), (31, 12577), (32, 12574),

Gene: JimmyPG_20 Start: 13597, Stop: 13229, Start Num: 7

Candidate Starts for JimmyPG_20:

(Start: 7 @13597 has 23 MA's), (10, 13537), (13, 13492), (14, 13474), (21, 13381), (24, 13327), (28, 13309), (34, 13276), (35, 13273),

Gene: JordanFarm_20 Start: 13361, Stop: 12990, Start Num: 7

Candidate Starts for JordanFarm_20:

(Start: 7 @13361 has 23 MA's), (13, 13250), (15, 13199), (21, 13139), (28, 13070), (31, 13049), (34, 13037),

Gene: Keough_19 Start: 13174, Stop: 12806, Start Num: 7

Candidate Starts for Keough_19:

(2, 13243), (Start: 7 @13174 has 23 MA's), (12, 13084), (13, 13063), (15, 13012), (17, 13003), (21, 12952), (29, 12871), (32, 12859), (34, 12850), (37, 12811),

Gene: KingKamren_20 Start: 13908, Stop: 13561, Start Num: 8

Candidate Starts for KingKamren_20:

(1, 14004), (5, 13980), (Start: 8 @13908 has 23 MA's), (21, 13701), (27, 13632), (30, 13614), (31, 13608),

Gene: Kosier_19 Start: 12583, Stop: 12227, Start Num: 7

Candidate Starts for Kosier_19:

(Start: 7 @12583 has 23 MA's), (13, 12484), (17, 12421), (19, 12409), (21, 12370), (25, 12313), (33, 12277), (35, 12271), (36, 12256),

Gene: LesNorah_19 Start: 13283, Stop: 12915, Start Num: 8

Candidate Starts for LesNorah_19:

(Start: 8 @13283 has 23 MA's), (15, 13139), (16, 13133), (22, 13076), (23, 13049), (28, 13007),

Gene: LilyLou_20 Start: 13133, Stop: 12765, Start Num: 8

Candidate Starts for LilyLou_20:

(Start: 8 @13133 has 23 MA's), (15, 12989), (16, 12983), (22, 12926), (23, 12899), (28, 12857),

Gene: Mazun_21 Start: 13633, Stop: 13265, Start Num: 7

Candidate Starts for Mazun_21:

(2, 13702), (Start: 7 @13633 has 23 MA's), (12, 13543), (13, 13522), (15, 13471), (21, 13411), (26, 13351),

Gene: MiamiPanther_19 Start: 12871, Stop: 12512, Start Num: 8

Candidate Starts for MiamiPanther_19:

(Start: 8 @12871 has 23 MA's), (18, 12709), (22, 12661), (31, 12577), (32, 12574),

Gene: Moleficent_20 Start: 13443, Stop: 13075, Start Num: 7

Candidate Starts for Moleficent_20:

(2, 13512), (Start: 7 @13443 has 23 MA's), (12, 13353), (13, 13332), (15, 13281), (21, 13221), (26, 13161),

Gene: Morrill_19 Start: 13184, Stop: 12816, Start Num: 7

Candidate Starts for Morrill_19:

(2, 13253), (Start: 7 @13184 has 23 MA's), (12, 13094), (13, 13073), (15, 13022), (21, 12962), (26, 12902),

Gene: Oatly_20 Start: 12991, Stop: 12638, Start Num: 9

Candidate Starts for Oatly_20:

(3, 13078), (4, 13075), (6, 13039), (Start: 9 @12991 has 5 MA's), (11, 12940), (13, 12916), (20, 12826), (21, 12805), (22, 12802),

Gene: Pabst_20 Start: 13235, Stop: 12882, Start Num: 9

Candidate Starts for Pabst_20:

(Start: 9 @13235 has 5 MA's), (11, 13184), (13, 13160), (22, 13046), (29, 12965), (31, 12956),

Gene: Pharky_20 Start: 13406, Stop: 13038, Start Num: 7

Candidate Starts for Pharky_20:

(2, 13475), (Start: 7 @13406 has 23 MA's), (12, 13316), (13, 13295), (15, 13244), (21, 13184), (26, 13124),

Gene: Phedro_20 Start: 13406, Stop: 13038, Start Num: 7

Candidate Starts for Phedro_20:

(2, 13475), (Start: 7 @13406 has 23 MA's), (12, 13316), (13, 13295), (15, 13244), (21, 13184), (26, 13124),

Gene: Phogo_20 Start: 12965, Stop: 12597, Start Num: 8

Candidate Starts for Phogo_20:

(Start: 8 @12965 has 23 MA's), (15, 12821), (16, 12815), (22, 12758), (23, 12731), (28, 12689),

Gene: Phracted_20 Start: 13406, Stop: 13038, Start Num: 7

Candidate Starts for Phracted_20:

(2, 13475), (Start: 7 @13406 has 23 MA's), (12, 13316), (13, 13295), (15, 13244), (21, 13184), (26, 13124),

Gene: PhriedRice_20 Start: 13417, Stop: 13049, Start Num: 7

Candidate Starts for PhriedRice_20:

(2, 13486), (Start: 7 @13417 has 23 MA's), (12, 13327), (13, 13306), (15, 13255), (21, 13195), (26, 13135),

Gene: PineapplePluto_22 Start: 13535, Stop: 13182, Start Num: 9

Candidate Starts for PineapplePluto_22:

(Start: 9 @13535 has 5 MA's), (11, 13484), (13, 13460), (20, 13370), (21, 13349), (22, 13346), (29, 13265), (32, 13253),

Gene: RicoCaldo_20 Start: 13438, Stop: 13070, Start Num: 7

Candidate Starts for RicoCaldo_20:

(2, 13507), (Start: 7 @13438 has 23 MA's), (12, 13348), (13, 13327), (15, 13276), (21, 13216), (26, 13156),

Gene: Salvatore2000_19 Start: 12871, Stop: 12512, Start Num: 8

Candidate Starts for Salvatore2000_19:

(Start: 8 @12871 has 23 MA's), (18, 12709), (22, 12661), (31, 12577), (32, 12574),

Gene: ShyRosie_20 Start: 13361, Stop: 12990, Start Num: 7

Candidate Starts for ShyRosie_20:

(Start: 7 @13361 has 23 MA's), (13, 13250), (15, 13199), (21, 13139), (28, 13070), (31, 13049), (34, 13037),

Gene: SoilSleuth_20 Start: 13403, Stop: 13032, Start Num: 7
Candidate Starts for SoilSleuth_20:
(Start: 7 @13403 has 23 MA's), (13, 13292), (15, 13241), (21, 13181), (28, 13112), (31, 13091), (34, 13079),

Gene: Sorvannah_19 Start: 12871, Stop: 12512, Start Num: 8
Candidate Starts for Sorvannah_19:
(Start: 8 @12871 has 23 MA's), (18, 12709), (22, 12661), (31, 12577), (32, 12574),

Gene: StagePhright_20 Start: 13406, Stop: 13038, Start Num: 7
Candidate Starts for StagePhright_20:
(2, 13475), (Start: 7 @13406 has 23 MA's), (12, 13316), (13, 13295), (15, 13244), (21, 13184), (26, 13124),

Gene: Stormbreaker_19 Start: 13095, Stop: 12727, Start Num: 8
Candidate Starts for Stormbreaker_19:
(Start: 8 @13095 has 23 MA's), (15, 12951), (16, 12945), (22, 12888), (23, 12861), (28, 12819),

Gene: SwissCheezer_19 Start: 12732, Stop: 12364, Start Num: 8
Candidate Starts for SwissCheezer_19:
(Start: 8 @12732 has 23 MA's), (15, 12588), (16, 12582), (22, 12525), (23, 12498), (28, 12456),

Gene: ThirteenKH_19 Start: 13183, Stop: 12815, Start Num: 7
Candidate Starts for ThirteenKH_19:
(2, 13252), (Start: 7 @13183 has 23 MA's), (12, 13093), (13, 13072), (15, 13021), (21, 12961), (26, 12901),

Gene: TicTac_21 Start: 13589, Stop: 13236, Start Num: 9
Candidate Starts for TicTac_21:
(Start: 9 @13589 has 5 MA's), (11, 13538), (13, 13514), (20, 13424), (21, 13403), (22, 13400), (29, 13319), (32, 13307),

Gene: TinyTimothy_19 Start: 12871, Stop: 12512, Start Num: 8
Candidate Starts for TinyTimothy_19:
(Start: 8 @12871 has 23 MA's), (18, 12709), (31, 12577), (32, 12574),

Gene: TownLake_19 Start: 13265, Stop: 12897, Start Num: 8
Candidate Starts for TownLake_19:
(Start: 8 @13265 has 23 MA's), (15, 13121), (16, 13115), (22, 13058), (23, 13031), (28, 12989),

Gene: TrippleS_19 Start: 13187, Stop: 12822, Start Num: 7
Candidate Starts for TrippleS_19:
(2, 13256), (Start: 7 @13187 has 23 MA's), (13, 13082), (14, 13064), (21, 12971), (26, 12908), (32, 12875),

Gene: Truong_20 Start: 13361, Stop: 12990, Start Num: 7
Candidate Starts for Truong_20:
(Start: 7 @13361 has 23 MA's), (13, 13250), (15, 13199), (21, 13139), (28, 13070), (31, 13049), (34, 13037),

Gene: Unphazed_20 Start: 12995, Stop: 12627, Start Num: 8
Candidate Starts for Unphazed_20:
(Start: 8 @12995 has 23 MA's), (15, 12851), (16, 12845), (22, 12788), (23, 12761), (28, 12719),

Gene: Waterlily_20 Start: 13403, Stop: 13032, Start Num: 7

Candidate Starts for Waterlily_20:

(Start: 7 @13403 has 23 MA's), (13, 13292), (15, 13241), (21, 13181), (28, 13112), (31, 13091), (34, 13079),

Gene: Wesak_19 Start: 12713, Stop: 12354, Start Num: 8

Candidate Starts for Wesak_19:

(Start: 8 @12713 has 23 MA's), (18, 12551), (22, 12503), (31, 12419), (32, 12416),

Gene: Xitlalli_19 Start: 13338, Stop: 12970, Start Num: 8

Candidate Starts for Xitlalli_19:

(Start: 8 @13338 has 23 MA's), (15, 13194), (16, 13188), (22, 13131), (23, 13104), (28, 13062),

Gene: Yafa_19 Start: 13203, Stop: 12838, Start Num: 7

Candidate Starts for Yafa_19:

(2, 13272), (Start: 7 @13203 has 23 MA's), (13, 13098), (14, 13080), (21, 12987), (26, 12924), (32, 12891),

Gene: YellowPanda_20 Start: 12594, Stop: 12235, Start Num: 8

Candidate Starts for YellowPanda_20:

(Start: 8 @12594 has 23 MA's), (18, 12432), (22, 12384), (31, 12300), (32, 12297),

Gene: Zhengyi_20 Start: 14026, Stop: 13679, Start Num: 8

Candidate Starts for Zhengyi_20:

(1, 14122), (5, 14098), (Start: 8 @14026 has 23 MA's), (21, 13819), (30, 13732),