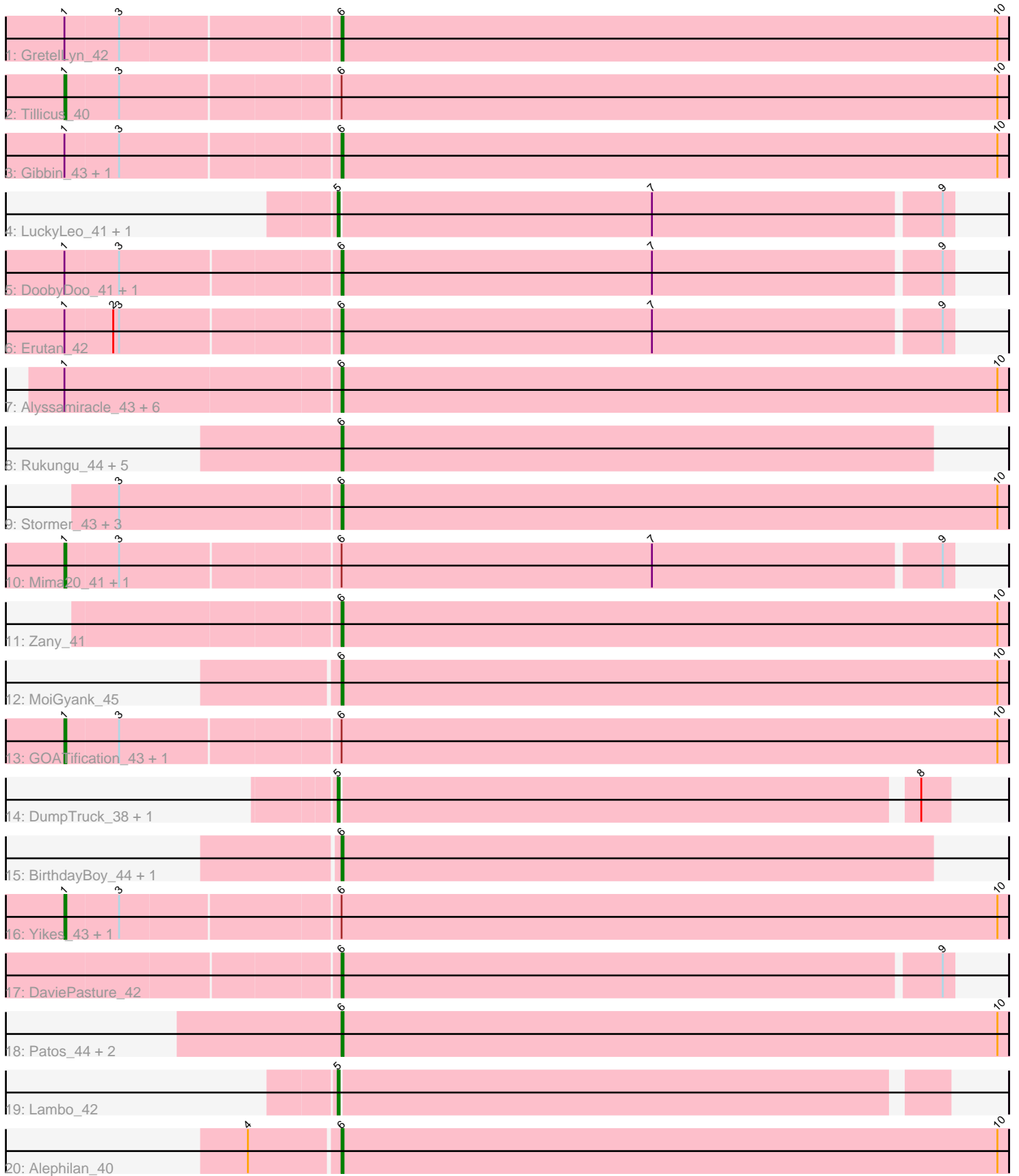


Pham 306592



Note: Tracks are now grouped by subcluster and scaled. Switching in subcluster is indicated by changes in track color. Track scale is now set by default to display the region 30 bp upstream of start 1 to 30 bp downstream of the last possible start. If this default region is judged to be packed too tightly with annotated starts, the track will be further scaled to only show that region of the ORF with annotated starts. This action will be indicated by adding "Zoomed" to the title. For starts, yellow indicates the location of called starts comprised solely of Glimmer/GeneMark auto-annotations, green indicates the location of called starts with at least 1 manual gene annotation.

## Pham 306592 Report

This analysis was run 06/27/26 on database version 652.

Pham number 306592 has 44 members, 5 are drafts.

Phages represented in each track:

- Track 1 : GretelLyn\_42
- Track 2 : Tillicus\_40
- Track 3 : Gibbin\_43, ParvusTarda\_42
- Track 4 : LuckyLeo\_41, Apeppi\_39
- Track 5 : DoobyDoo\_41, Pywacket\_41
- Track 6 : Erutan\_42
- Track 7 : Alyssamiracle\_43, Riduram\_40, Avian\_40, Genamy16\_43, Rumi\_42, RazorC\_41, Astralis\_40
- Track 8 : Rukungu\_44, Wojtek\_41, Lila22\_42, Sampudon\_42, Rota\_42, Jalebi\_41
- Track 9 : Stormer\_43, Jamemuya19\_40, Charminar\_40, NovaSharks\_42
- Track 10 : Mima20\_41, OtterstedtS21\_42
- Track 11 : Zany\_41
- Track 12 : MoiGyank\_45
- Track 13 : GOATification\_43, Fulcrum\_43
- Track 14 : DumpTruck\_38, Xenia2\_39
- Track 15 : BirthdayBoy\_44, Ranch\_43
- Track 16 : Yikes\_43, Sadboi\_43
- Track 17 : DaviePasture\_42
- Track 18 : Patos\_44, NorManre\_44, LavAbarElk\_41
- Track 19 : Lambo\_42
- Track 20 : Alephilan\_40

### ***Summary of Final Annotations (See graph section above for start numbers):***

The start number called the most often in the published annotations is 6, it was called in 27 of the 39 non-draft genes in the pham.

Genes that call this "Most Annotated" start:

- Alephilan\_40, Alyssamiracle\_43, Astralis\_40, Avian\_40, BirthdayBoy\_44, Charminar\_40, DaviePasture\_42, DoobyDoo\_41, Erutan\_42, Genamy16\_43, Gibbin\_43, GretelLyn\_42, Jalebi\_41, Jamemuya19\_40, LavAbarElk\_41, Lila22\_42, MoiGyank\_45, NorManre\_44, NovaSharks\_42, ParvusTarda\_42, Patos\_44, Pywacket\_41, Ranch\_43, RazorC\_41, Riduram\_40, Rota\_42, Rukungu\_44, Rumi\_42, Sampudon\_42, Stormer\_43, Wojtek\_41, Zany\_41,

Genes that have the "Most Annotated" start but do not call it:

- Fulcrum\_43, GOATification\_43, Mima20\_41, OtterstedtS21\_42, Sadboi\_43, Tillicus\_40, Yikes\_43,

Genes that do not have the "Most Annotated" start:

- Apeppi\_39, DumpTruck\_38, Lambo\_42, LuckyLeo\_41, Xenia2\_39,

### Summary by start number:

Start 1:

- Found in 20 of 44 ( 45.5% ) of genes in pham
- Manual Annotations of this start: 7 of 39
- Called 35.0% of time when present
- Phage (with cluster) where this start called: Fulcrum\_43 (DV), GOATification\_43 (DV), Mima20\_41 (DV), OtterstedtS21\_42 (DV), Sadboi\_43 (DV), Tillicus\_40 (DV), Yikes\_43 (DV),

Start 5:

- Found in 5 of 44 ( 11.4% ) of genes in pham
- Manual Annotations of this start: 5 of 39
- Called 100.0% of time when present
- Phage (with cluster) where this start called: Apeppi\_39 (DV), DumpTruck\_38 (DV), Lambo\_42 (DV), LuckyLeo\_41 (DV), Xenia2\_39 (DV),

Start 6:

- Found in 39 of 44 ( 88.6% ) of genes in pham
- Manual Annotations of this start: 27 of 39
- Called 82.1% of time when present
- Phage (with cluster) where this start called: Alephilan\_40 (DV), Alyssamiracle\_43 (DV), Astralis\_40 (DV), Avian\_40 (DV), BirthdayBoy\_44 (DV), Charminar\_40 (DV), DaviePasture\_42 (DV), DoobyDoo\_41 (DV), Erutan\_42 (DV), Genamy16\_43 (DV), Gibbin\_43 (DV), GretelLyn\_42 (DV), Jalebi\_41 (DV), Jamemuya19\_40 (DV), LavAbarElk\_41 (DV), Lila22\_42 (DV), MoiGyank\_45 (DV), NorManre\_44 (DV), NovaSharks\_42 (DV), ParvusTarda\_42 (DV), Patos\_44 (DV), Pywacket\_41 (DV), Ranch\_43 (DV), RazorC\_41 (DV), Riduram\_40 (DV), Rota\_42 (DV), Rukungu\_44 (DV), Rumi\_42 (DV), Sampudon\_42 (DV), Stormer\_43 (DV), Wojtek\_41 (DV), Zany\_41 (DV),

### Summary by clusters:

There is one cluster represented in this pham: DV

Info for manual annotations of cluster DV:

- Start number 1 was manually annotated 7 times for cluster DV.
- Start number 5 was manually annotated 5 times for cluster DV.
- Start number 6 was manually annotated 27 times for cluster DV.

### Gene Information:

Gene: Alephilan\_40 Start: 33753, Stop: 34094, Start Num: 6

Candidate Starts for Alephilan\_40:  
(4, 33708), (Start: 6 @33753 has 27 MA's), (10, 34089),

Gene: Alyssamiracle\_43 Start: 32747, Stop: 33088, Start Num: 6  
Candidate Starts for Alyssamiracle\_43:  
(Start: 1 @32609 has 7 MA's), (Start: 6 @32747 has 27 MA's), (10, 33083),

Gene: Apeppi\_39 Start: 33776, Stop: 34084, Start Num: 5  
Candidate Starts for Apeppi\_39:  
(Start: 5 @33776 has 5 MA's), (7, 33935), (9, 34079),

Gene: Astralis\_40 Start: 32325, Stop: 32666, Start Num: 6  
Candidate Starts for Astralis\_40:  
(Start: 1 @32187 has 7 MA's), (Start: 6 @32325 has 27 MA's), (10, 32661),

Gene: Avian\_40 Start: 32714, Stop: 33055, Start Num: 6  
Candidate Starts for Avian\_40:  
(Start: 1 @32576 has 7 MA's), (Start: 6 @32714 has 27 MA's), (10, 33050),

Gene: BirthdayBoy\_44 Start: 34531, Stop: 34833, Start Num: 6  
Candidate Starts for BirthdayBoy\_44:  
(Start: 6 @34531 has 27 MA's),

Gene: Charminar\_40 Start: 32332, Stop: 32673, Start Num: 6  
Candidate Starts for Charminar\_40:  
(3, 32221), (Start: 6 @32332 has 27 MA's), (10, 32668),

Gene: DaviePasture\_42 Start: 34186, Stop: 34494, Start Num: 6  
Candidate Starts for DaviePasture\_42:  
(Start: 6 @34186 has 27 MA's), (9, 34489),

Gene: DoobyDoo\_41 Start: 33341, Stop: 33649, Start Num: 6  
Candidate Starts for DoobyDoo\_41:  
(Start: 1 @33206 has 7 MA's), (3, 33233), (Start: 6 @33341 has 27 MA's), (7, 33500), (9, 33644),

Gene: DumpTruck\_38 Start: 32163, Stop: 32465, Start Num: 5  
Candidate Starts for DumpTruck\_38:  
(Start: 5 @32163 has 5 MA's), (8, 32451),

Gene: Erutan\_42 Start: 33846, Stop: 34154, Start Num: 6  
Candidate Starts for Erutan\_42:  
(Start: 1 @33711 has 7 MA's), (2, 33735), (3, 33738), (Start: 6 @33846 has 27 MA's), (7, 34005), (9, 34149),

Gene: Fulcrum\_43 Start: 34231, Stop: 34707, Start Num: 1  
Candidate Starts for Fulcrum\_43:  
(Start: 1 @34231 has 7 MA's), (3, 34258), (Start: 6 @34366 has 27 MA's), (10, 34702),

Gene: GOATification\_43 Start: 34231, Stop: 34707, Start Num: 1  
Candidate Starts for GOATification\_43:  
(Start: 1 @34231 has 7 MA's), (3, 34258), (Start: 6 @34366 has 27 MA's), (10, 34702),

Gene: Genamy16\_43 Start: 32735, Stop: 33076, Start Num: 6

Candidate Starts for Genamy16\_43:  
(Start: 1 @32597 has 7 MA's), (Start: 6 @32735 has 27 MA's), (10, 33071),

Gene: Gibbin\_43 Start: 34469, Stop: 34810, Start Num: 6  
Candidate Starts for Gibbin\_43:  
(Start: 1 @34334 has 7 MA's), (3, 34361), (Start: 6 @34469 has 27 MA's), (10, 34805),

Gene: Gretellyn\_42 Start: 34719, Stop: 35060, Start Num: 6  
Candidate Starts for Gretellyn\_42:  
(Start: 1 @34584 has 7 MA's), (3, 34611), (Start: 6 @34719 has 27 MA's), (10, 35055),

Gene: Jalebi\_41 Start: 35057, Stop: 35359, Start Num: 6  
Candidate Starts for Jalebi\_41:  
(Start: 6 @35057 has 27 MA's),

Gene: Jamemuya19\_40 Start: 32338, Stop: 32679, Start Num: 6  
Candidate Starts for Jamemuya19\_40:  
(3, 32227), (Start: 6 @32338 has 27 MA's), (10, 32674),

Gene: Lambo\_42 Start: 34358, Stop: 34660, Start Num: 5  
Candidate Starts for Lambo\_42:  
(Start: 5 @34358 has 5 MA's),

Gene: LavAbarElk\_41 Start: 32989, Stop: 33330, Start Num: 6  
Candidate Starts for LavAbarElk\_41:  
(Start: 6 @32989 has 27 MA's), (10, 33325),

Gene: Lila22\_42 Start: 34503, Stop: 34805, Start Num: 6  
Candidate Starts for Lila22\_42:  
(Start: 6 @34503 has 27 MA's),

Gene: LuckyLeo\_41 Start: 33776, Stop: 34084, Start Num: 5  
Candidate Starts for LuckyLeo\_41:  
(Start: 5 @33776 has 5 MA's), (7, 33935), (9, 34079),

Gene: Mima20\_41 Start: 33957, Stop: 34400, Start Num: 1  
Candidate Starts for Mima20\_41:  
(Start: 1 @33957 has 7 MA's), (3, 33984), (Start: 6 @34092 has 27 MA's), (7, 34251), (9, 34395),

Gene: MoiGyank\_45 Start: 34910, Stop: 35251, Start Num: 6  
Candidate Starts for MoiGyank\_45:  
(Start: 6 @34910 has 27 MA's), (10, 35246),

Gene: NorManre\_44 Start: 34128, Stop: 34469, Start Num: 6  
Candidate Starts for NorManre\_44:  
(Start: 6 @34128 has 27 MA's), (10, 34464),

Gene: NovaSharks\_42 Start: 32326, Stop: 32667, Start Num: 6  
Candidate Starts for NovaSharks\_42:  
(3, 32215), (Start: 6 @32326 has 27 MA's), (10, 32662),

Gene: OtterstedtS21\_42 Start: 33900, Stop: 34343, Start Num: 1  
Candidate Starts for OtterstedtS21\_42:

(Start: 1 @33900 has 7 MA's), (3, 33927), (Start: 6 @34035 has 27 MA's), (7, 34194), (9, 34338),

Gene: ParvusTarda\_42 Start: 33514, Stop: 33855, Start Num: 6

Candidate Starts for ParvusTarda\_42:

(Start: 1 @33379 has 7 MA's), (3, 33406), (Start: 6 @33514 has 27 MA's), (10, 33850),

Gene: Patos\_44 Start: 34128, Stop: 34469, Start Num: 6

Candidate Starts for Patos\_44:

(Start: 6 @34128 has 27 MA's), (10, 34464),

Gene: Pywacket\_41 Start: 34865, Stop: 35173, Start Num: 6

Candidate Starts for Pywacket\_41:

(Start: 1 @34730 has 7 MA's), (3, 34757), (Start: 6 @34865 has 27 MA's), (7, 35024), (9, 35168),

Gene: Ranch\_43 Start: 33012, Stop: 33314, Start Num: 6

Candidate Starts for Ranch\_43:

(Start: 6 @33012 has 27 MA's),

Gene: RazorC\_41 Start: 32716, Stop: 33057, Start Num: 6

Candidate Starts for RazorC\_41:

(Start: 1 @32578 has 7 MA's), (Start: 6 @32716 has 27 MA's), (10, 33052),

Gene: Riduram\_40 Start: 32292, Stop: 32633, Start Num: 6

Candidate Starts for Riduram\_40:

(Start: 1 @32154 has 7 MA's), (Start: 6 @32292 has 27 MA's), (10, 32628),

Gene: Rota\_42 Start: 34413, Stop: 34715, Start Num: 6

Candidate Starts for Rota\_42:

(Start: 6 @34413 has 27 MA's),

Gene: Rukungu\_44 Start: 34736, Stop: 35038, Start Num: 6

Candidate Starts for Rukungu\_44:

(Start: 6 @34736 has 27 MA's),

Gene: Rumi\_42 Start: 32260, Stop: 32601, Start Num: 6

Candidate Starts for Rumi\_42:

(Start: 1 @32122 has 7 MA's), (Start: 6 @32260 has 27 MA's), (10, 32596),

Gene: Sadboi\_43 Start: 34585, Stop: 35061, Start Num: 1

Candidate Starts for Sadboi\_43:

(Start: 1 @34585 has 7 MA's), (3, 34612), (Start: 6 @34720 has 27 MA's), (10, 35056),

Gene: Sampudon\_42 Start: 35057, Stop: 35359, Start Num: 6

Candidate Starts for Sampudon\_42:

(Start: 6 @35057 has 27 MA's),

Gene: Stormer\_43 Start: 32264, Stop: 32605, Start Num: 6

Candidate Starts for Stormer\_43:

(3, 32153), (Start: 6 @32264 has 27 MA's), (10, 32600),

Gene: Tillicus\_40 Start: 33201, Stop: 33677, Start Num: 1

Candidate Starts for Tillicus\_40:

(Start: 1 @33201 has 7 MA's), (3, 33228), (Start: 6 @33336 has 27 MA's), (10, 33672),

Gene: Wojtek\_41 Start: 33757, Stop: 34059, Start Num: 6  
Candidate Starts for Wojtek\_41:  
(Start: 6 @33757 has 27 MA's),

Gene: Xenia2\_39 Start: 32208, Stop: 32510, Start Num: 5  
Candidate Starts for Xenia2\_39:  
(Start: 5 @32208 has 5 MA's), (8, 32496),

Gene: Yikes\_43 Start: 34832, Stop: 35308, Start Num: 1  
Candidate Starts for Yikes\_43:  
(Start: 1 @34832 has 7 MA's), (3, 34859), (Start: 6 @34967 has 27 MA's), (10, 35303),

Gene: Zany\_41 Start: 34506, Stop: 34847, Start Num: 6  
Candidate Starts for Zany\_41:  
(Start: 6 @34506 has 27 MA's), (10, 34842),