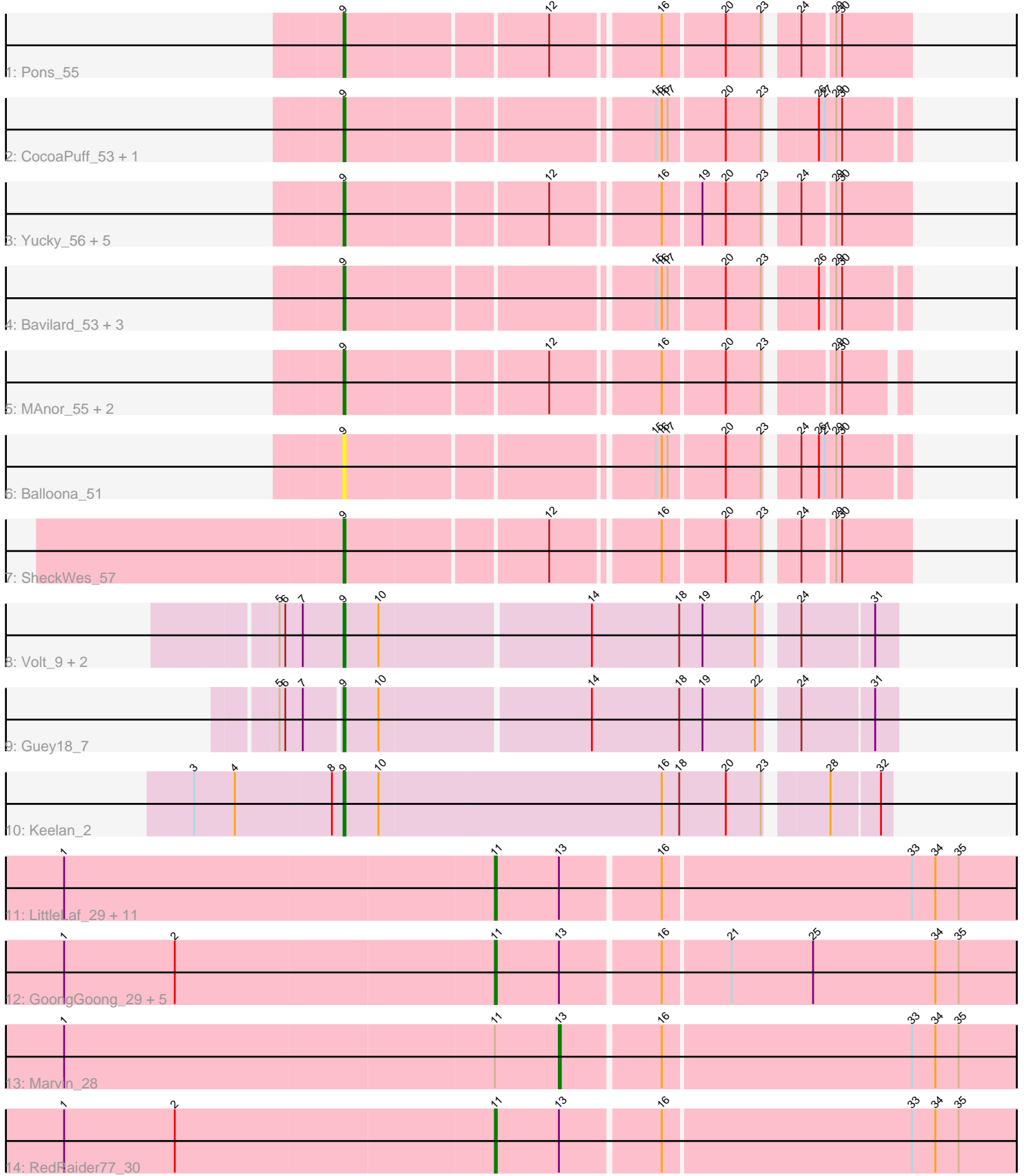


Pham 306597



Note: Tracks are now grouped by subcluster and scaled. Switching in subcluster is indicated by changes in track color. Track scale is now set by default to display the region 30 bp upstream of start 1 to 30 bp downstream of the last possible start. If this default region is judged to be packed too tightly with annotated starts, the track will be further scaled to only show that region of the ORF with annotated starts. This action will be indicated by adding "Zoomed" to the title. For starts, yellow indicates the location of called starts comprised solely of Glimmer/GeneMark auto-annotations, green indicates the location of called starts with at least 1 manual gene annotation.

Pham 306597 Report

This analysis was run 06/27/26 on database version 652.

Pham number 306597 has 43 members, 6 are drafts.

Phages represented in each track:

- Track 1 : Pons_55
- Track 2 : CocoaPuff_53, PotPie_53
- Track 3 : Yucky_56, McDazzle_55, ElJefes_55, BigChungus_53, Feastonyeet_53, Vine_56
- Track 4 : Bavidard_53, SummitAcademy_53, Elinal_57, KayGee_55
- Track 5 : MAnor_55, Mayweather_58, Tarnish_54
- Track 6 : Balloona_51
- Track 7 : SheckWes_57
- Track 8 : Volt_9, Ziko_10, Ronaldo_9
- Track 9 : Guey18_7
- Track 10 : Keelan_2
- Track 11 : LittleLaf_29, Pringar_29, FeliMaine_30, Beelzebub_33, VasuNzinga_29, Lilbit_29, JoieB_30, Clarkson_30, Huphlepuuff_31, Caprice_26, Tesla_29, Corazon_28
- Track 12 : GoongGoong_29, Raela_30, Gattaca_29, MosMoris_28, Blackbeetle_30, Poise_30
- Track 13 : Marvin_28
- Track 14 : RedRaider77_30

Summary of Final Annotations (See graph section above for start numbers):

The start number called the most often in the published annotations is 11, it was called in 18 of the 37 non-draft genes in the pham.

Genes that call this "Most Annotated" start:

- Beelzebub_33, Blackbeetle_30, Caprice_26, Clarkson_30, Corazon_28, FeliMaine_30, Gattaca_29, GoongGoong_29, Huphlepuuff_31, JoieB_30, Lilbit_29, LittleLaf_29, MosMoris_28, Poise_30, Pringar_29, Raela_30, RedRaider77_30, Tesla_29, VasuNzinga_29,

Genes that have the "Most Annotated" start but do not call it:

- Marvin_28,

Genes that do not have the "Most Annotated" start:

- Balloona_51, Bavidard_53, BigChungus_53, CocoaPuff_53, ElJefes_55, Elinal_57, Feastonyeet_53, Guey18_7, KayGee_55, Keelan_2, MAnor_55, Mayweather_58, McDazzle_55, Pons_55, PotPie_53, Ronaldo_9, SheckWes_57, SummitAcademy_53, Tarnish_54, Vine_56, Volt_9, Yucky_56, Ziko_10,

Summary by start number:

Start 9:

- Found in 23 of 43 (53.5%) of genes in pham
- Manual Annotations of this start: 18 of 37
- Called 100.0% of time when present
- Phage (with cluster) where this start called: Balloona_51 (CT), Bavidard_53 (CT), BigChungus_53 (CT), CocoaPuff_53 (CT), ElJefes_55 (CT), Elinal_57 (CT), Feastonyeet_53 (CT), Guey18_7 (DP), KayGee_55 (CT), Keelan_2 (DP), MAnor_55 (CT), Mayweather_58 (CT), McDazzle_55 (CT), Pons_55 (CT), PotPie_53 (CT), Ronaldo_9 (DP), SheckWes_57 (CT), SummitAcademy_53 (CT), Tarnish_54 (CT), Vine_56 (CT), Volt_9 (DP), Yucky_56 (CT), Ziko_10 (DP),

Start 11:

- Found in 20 of 43 (46.5%) of genes in pham
- Manual Annotations of this start: 18 of 37
- Called 95.0% of time when present
- Phage (with cluster) where this start called: Beelzebub_33 (S), Blackbeetle_30 (S), Caprice_26 (S), Clarkson_30 (S), Corazon_28 (S), FeliMaine_30 (S), Gattaca_29 (S), GoongGoong_29 (S), Huphlepuuff_31 (S), JoieB_30 (S), Lilbit_29 (S), LittleLaf_29 (S), MosMoris_28 (S), Poise_30 (S), Pringar_29 (S), Raela_30 (S), RedRaider77_30 (S), Tesla_29 (S), VasuNzinga_29 (S),

Start 13:

- Found in 20 of 43 (46.5%) of genes in pham
- Manual Annotations of this start: 1 of 37
- Called 5.0% of time when present
- Phage (with cluster) where this start called: Marvin_28 (S),

Summary by clusters:

There are 3 clusters represented in this pham: S, DP, CT,

Info for manual annotations of cluster CT:

- Start number 9 was manually annotated 13 times for cluster CT.

Info for manual annotations of cluster DP:

- Start number 9 was manually annotated 5 times for cluster DP.

Info for manual annotations of cluster S:

- Start number 11 was manually annotated 18 times for cluster S.
- Start number 13 was manually annotated 1 time for cluster S.

Gene Information:

Gene: Balloona_51 Start: 37891, Stop: 37628, Start Num: 9

Candidate Starts for Balloona_51:

(Start: 9 @37891 has 18 MA's), (15, 37744), (16, 37741), (17, 37738), (20, 37711), (23, 37693), (24, 37681), (26, 37672), (27, 37669), (29, 37663), (30, 37660),

Gene: Bavilard_53 Start: 37696, Stop: 37436, Start Num: 9

Candidate Starts for Bavilard_53:

(Start: 9 @37696 has 18 MA's), (15, 37549), (16, 37546), (17, 37543), (20, 37516), (23, 37498), (26, 37477), (29, 37471), (30, 37468),

Gene: Beelzebub_33 Start: 8896, Stop: 9183, Start Num: 11

Candidate Starts for Beelzebub_33:

(1, 8677), (Start: 11 @8896 has 18 MA's), (Start: 13 @8929 has 1 MA's), (16, 8977), (33, 9103), (34, 9115), (35, 9127),

Gene: BigChungus_53 Start: 37823, Stop: 37560, Start Num: 9

Candidate Starts for BigChungus_53:

(Start: 9 @37823 has 18 MA's), (12, 37724), (16, 37673), (19, 37655), (20, 37643), (23, 37625), (24, 37613), (29, 37598), (30, 37595),

Gene: Blackbeetle_30 Start: 8232, Stop: 8519, Start Num: 11

Candidate Starts for Blackbeetle_30:

(1, 8013), (2, 8070), (Start: 11 @8232 has 18 MA's), (Start: 13 @8265 has 1 MA's), (16, 8313), (21, 8346), (25, 8388), (34, 8451), (35, 8463),

Gene: Caprice_26 Start: 7460, Stop: 7747, Start Num: 11

Candidate Starts for Caprice_26:

(1, 7241), (Start: 11 @7460 has 18 MA's), (Start: 13 @7493 has 1 MA's), (16, 7541), (33, 7667), (34, 7679), (35, 7691),

Gene: Clarkson_30 Start: 8597, Stop: 8884, Start Num: 11

Candidate Starts for Clarkson_30:

(1, 8378), (Start: 11 @8597 has 18 MA's), (Start: 13 @8630 has 1 MA's), (16, 8678), (33, 8804), (34, 8816), (35, 8828),

Gene: CocoaPuff_53 Start: 37828, Stop: 37565, Start Num: 9

Candidate Starts for CocoaPuff_53:

(Start: 9 @37828 has 18 MA's), (15, 37681), (16, 37678), (17, 37675), (20, 37648), (23, 37630), (26, 37609), (27, 37606), (29, 37600), (30, 37597),

Gene: Corazon_28 Start: 8550, Stop: 8837, Start Num: 11

Candidate Starts for Corazon_28:

(1, 8331), (Start: 11 @8550 has 18 MA's), (Start: 13 @8583 has 1 MA's), (16, 8631), (33, 8757), (34, 8769), (35, 8781),

Gene: ElJefes_55 Start: 38367, Stop: 38104, Start Num: 9

Candidate Starts for ElJefes_55:

(Start: 9 @38367 has 18 MA's), (12, 38268), (16, 38217), (19, 38199), (20, 38187), (23, 38169), (24, 38157), (29, 38142), (30, 38139),

Gene: Elinal_57 Start: 38332, Stop: 38072, Start Num: 9

Candidate Starts for Elinal_57:

(Start: 9 @38332 has 18 MA's), (15, 38185), (16, 38182), (17, 38179), (20, 38152), (23, 38134), (26, 38113), (29, 38107), (30, 38104),

Gene: Feastonyeet_53 Start: 37823, Stop: 37560, Start Num: 9

Candidate Starts for Feastonyeet_53:

(Start: 9 @37823 has 18 MA's), (12, 37724), (16, 37673), (19, 37655), (20, 37643), (23, 37625), (24, 37613), (29, 37598), (30, 37595),

Gene: FeliMaine_30 Start: 8598, Stop: 8885, Start Num: 11

Candidate Starts for FeliMaine_30:

(1, 8379), (Start: 11 @8598 has 18 MA's), (Start: 13 @8631 has 1 MA's), (16, 8679), (33, 8805), (34, 8817), (35, 8829),

Gene: Gattaca_29 Start: 8121, Stop: 8408, Start Num: 11

Candidate Starts for Gattaca_29:

(1, 7902), (2, 7959), (Start: 11 @8121 has 18 MA's), (Start: 13 @8154 has 1 MA's), (16, 8202), (21, 8235), (25, 8277), (34, 8340), (35, 8352),

Gene: GoongGoong_29 Start: 8134, Stop: 8421, Start Num: 11

Candidate Starts for GoongGoong_29:

(1, 7915), (2, 7972), (Start: 11 @8134 has 18 MA's), (Start: 13 @8167 has 1 MA's), (16, 8215), (21, 8248), (25, 8290), (34, 8353), (35, 8365),

Gene: Guey18_7 Start: 1684, Stop: 1415, Start Num: 9

Candidate Starts for Guey18_7:

(5, 1714), (6, 1711), (7, 1702), (Start: 9 @1684 has 18 MA's), (10, 1666), (14, 1561), (18, 1516), (19, 1504), (22, 1477), (24, 1462), (31, 1426),

Gene: Huphlepuuff_31 Start: 8402, Stop: 8689, Start Num: 11

Candidate Starts for Huphlepuuff_31:

(1, 8183), (Start: 11 @8402 has 18 MA's), (Start: 13 @8435 has 1 MA's), (16, 8483), (33, 8609), (34, 8621), (35, 8633),

Gene: JoieB_30 Start: 8621, Stop: 8908, Start Num: 11

Candidate Starts for JoieB_30:

(1, 8402), (Start: 11 @8621 has 18 MA's), (Start: 13 @8654 has 1 MA's), (16, 8702), (33, 8828), (34, 8840), (35, 8852),

Gene: KayGee_55 Start: 38332, Stop: 38072, Start Num: 9

Candidate Starts for KayGee_55:

(Start: 9 @38332 has 18 MA's), (15, 38185), (16, 38182), (17, 38179), (20, 38152), (23, 38134), (26, 38113), (29, 38107), (30, 38104),

Gene: Keelan_2 Start: 536, Stop: 267, Start Num: 9

Candidate Starts for Keelan_2:

(3, 611), (4, 590), (8, 542), (Start: 9 @536 has 18 MA's), (10, 518), (16, 374), (18, 365), (20, 341), (23, 323), (28, 296), (32, 272),

Gene: Lilbit_29 Start: 8598, Stop: 8885, Start Num: 11

Candidate Starts for Lilbit_29:

(1, 8379), (Start: 11 @8598 has 18 MA's), (Start: 13 @8631 has 1 MA's), (16, 8679), (33, 8805), (34, 8817), (35, 8829),

Gene: LittleLaf_29 Start: 8327, Stop: 8614, Start Num: 11

Candidate Starts for LittleLaf_29:

(1, 8108), (Start: 11 @8327 has 18 MA's), (Start: 13 @8360 has 1 MA's), (16, 8408), (33, 8534), (34, 8546), (35, 8558),

Gene: MAnor_55 Start: 38687, Stop: 38430, Start Num: 9

Candidate Starts for MAnor_55:

(Start: 9 @38687 has 18 MA's), (12, 38588), (16, 38537), (20, 38507), (23, 38489), (29, 38462), (30, 38459),

Gene: Marvin_28 Start: 8630, Stop: 8884, Start Num: 13

Candidate Starts for Marvin_28:

(1, 8378), (Start: 11 @8597 has 18 MA's), (Start: 13 @8630 has 1 MA's), (16, 8678), (33, 8804), (34, 8816), (35, 8828),

Gene: Mayweather_58 Start: 39432, Stop: 39175, Start Num: 9

Candidate Starts for Mayweather_58:

(Start: 9 @39432 has 18 MA's), (12, 39333), (16, 39282), (20, 39252), (23, 39234), (29, 39207), (30, 39204),

Gene: McDazzle_55 Start: 38361, Stop: 38098, Start Num: 9

Candidate Starts for McDazzle_55:

(Start: 9 @38361 has 18 MA's), (12, 38262), (16, 38211), (19, 38193), (20, 38181), (23, 38163), (24, 38151), (29, 38136), (30, 38133),

Gene: MosMoris_28 Start: 8121, Stop: 8408, Start Num: 11

Candidate Starts for MosMoris_28:

(1, 7902), (2, 7959), (Start: 11 @8121 has 18 MA's), (Start: 13 @8154 has 1 MA's), (16, 8202), (21, 8235), (25, 8277), (34, 8340), (35, 8352),

Gene: Poise_30 Start: 8232, Stop: 8519, Start Num: 11

Candidate Starts for Poise_30:

(1, 8013), (2, 8070), (Start: 11 @8232 has 18 MA's), (Start: 13 @8265 has 1 MA's), (16, 8313), (21, 8346), (25, 8388), (34, 8451), (35, 8463),

Gene: Pons_55 Start: 38319, Stop: 38056, Start Num: 9

Candidate Starts for Pons_55:

(Start: 9 @38319 has 18 MA's), (12, 38220), (16, 38169), (20, 38139), (23, 38121), (24, 38109), (29, 38094), (30, 38091),

Gene: PotPie_53 Start: 38858, Stop: 38595, Start Num: 9

Candidate Starts for PotPie_53:

(Start: 9 @38858 has 18 MA's), (15, 38711), (16, 38708), (17, 38705), (20, 38678), (23, 38660), (26, 38639), (27, 38636), (29, 38630), (30, 38627),

Gene: Pringar_29 Start: 8227, Stop: 8514, Start Num: 11

Candidate Starts for Pringar_29:

(1, 8008), (Start: 11 @8227 has 18 MA's), (Start: 13 @8260 has 1 MA's), (16, 8308), (33, 8434), (34, 8446), (35, 8458),

Gene: Raela_30 Start: 8787, Stop: 9074, Start Num: 11

Candidate Starts for Raela_30:

(1, 8568), (2, 8625), (Start: 11 @8787 has 18 MA's), (Start: 13 @8820 has 1 MA's), (16, 8868), (21, 8901), (25, 8943), (34, 9006), (35, 9018),

Gene: RedRaider77_30 Start: 8371, Stop: 8658, Start Num: 11

Candidate Starts for RedRaider77_30:

(1, 8152), (2, 8209), (Start: 11 @8371 has 18 MA's), (Start: 13 @8404 has 1 MA's), (16, 8452), (33, 8578), (34, 8590), (35, 8602),

Gene: Ronaldo_9 Start: 2110, Stop: 1841, Start Num: 9

Candidate Starts for Ronaldo_9:

(5, 2143), (6, 2140), (7, 2131), (Start: 9 @2110 has 18 MA's), (10, 2092), (14, 1987), (18, 1942), (19, 1930), (22, 1903), (24, 1888), (31, 1852),

Gene: SheckWes_57 Start: 37906, Stop: 37643, Start Num: 9

Candidate Starts for SheckWes_57:

(Start: 9 @37906 has 18 MA's), (12, 37807), (16, 37756), (20, 37726), (23, 37708), (24, 37696), (29, 37681), (30, 37678),

Gene: SummitAcademy_53 Start: 38001, Stop: 37741, Start Num: 9

Candidate Starts for SummitAcademy_53:

(Start: 9 @38001 has 18 MA's), (15, 37854), (16, 37851), (17, 37848), (20, 37821), (23, 37803), (26, 37782), (29, 37776), (30, 37773),

Gene: Tarnish_54 Start: 38586, Stop: 38329, Start Num: 9

Candidate Starts for Tarnish_54:

(Start: 9 @38586 has 18 MA's), (12, 38487), (16, 38436), (20, 38406), (23, 38388), (29, 38361), (30, 38358),

Gene: Tesla_29 Start: 8220, Stop: 8507, Start Num: 11

Candidate Starts for Tesla_29:

(1, 8001), (Start: 11 @8220 has 18 MA's), (Start: 13 @8253 has 1 MA's), (16, 8301), (33, 8427), (34, 8439), (35, 8451),

Gene: VasuNzinga_29 Start: 7804, Stop: 8091, Start Num: 11

Candidate Starts for VasuNzinga_29:

(1, 7585), (Start: 11 @7804 has 18 MA's), (Start: 13 @7837 has 1 MA's), (16, 7885), (33, 8011), (34, 8023), (35, 8035),

Gene: Vine_56 Start: 38624, Stop: 38361, Start Num: 9

Candidate Starts for Vine_56:

(Start: 9 @38624 has 18 MA's), (12, 38525), (16, 38474), (19, 38456), (20, 38444), (23, 38426), (24, 38414), (29, 38399), (30, 38396),

Gene: Volt_9 Start: 2110, Stop: 1841, Start Num: 9

Candidate Starts for Volt_9:

(5, 2143), (6, 2140), (7, 2131), (Start: 9 @2110 has 18 MA's), (10, 2092), (14, 1987), (18, 1942), (19, 1930), (22, 1903), (24, 1888), (31, 1852),

Gene: Yucky_56 Start: 38416, Stop: 38153, Start Num: 9

Candidate Starts for Yucky_56:

(Start: 9 @38416 has 18 MA's), (12, 38317), (16, 38266), (19, 38248), (20, 38236), (23, 38218), (24, 38206), (29, 38191), (30, 38188),

Gene: Ziko_10 Start: 2124, Stop: 1855, Start Num: 9

Candidate Starts for Ziko_10:

(5, 2157), (6, 2154), (7, 2145), (Start: 9 @2124 has 18 MA's), (10, 2106), (14, 2001), (18, 1956), (19, 1944), (22, 1917), (24, 1902), (31, 1866),