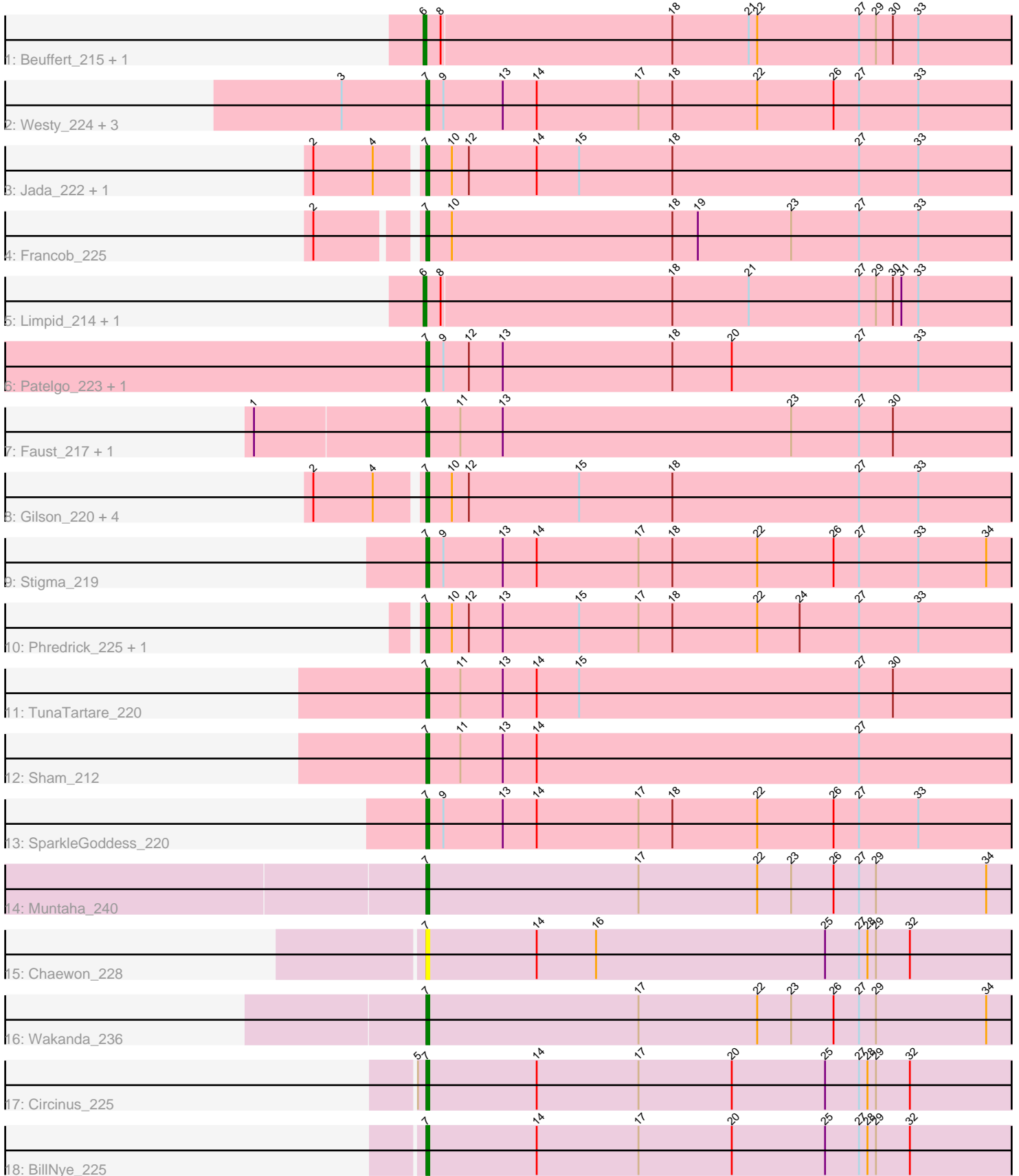


Zoomed Pham 306706



Note: Tracks are now grouped by subcluster and scaled. Switching in subcluster is indicated by changes in track color. Track scale is now set by default to display the region 30 bp upstream of start 1 to 30 bp downstream of the last possible start. If this default region is judged to be packed too tightly with annotated starts, the track will be further scaled to only show that region of the ORF with annotated starts. This action will be indicated by adding "Zoomed" to the title. For starts, yellow indicates the location of called starts comprised solely of Glimmer/GeneMark auto-annotations, green indicates the location of called starts with at least 1 manual gene annotation.

Pham 306706 Report

This analysis was run 06/27/26 on database version 652.

Pham number 306706 has 31 members, 3 are drafts.

Phages represented in each track:

- Track 1 : Beuffert_215, Blueeyedbeauty_216
- Track 2 : Westy_224, Belfort_220, Comrade_217, Karp_216
- Track 3 : Jada_222, Forrest_223
- Track 4 : Francob_225
- Track 5 : Limpid_214, Annadreamy_207
- Track 6 : Patelgo_223, Moab_222
- Track 7 : Faust_217, SeresaTree_221
- Track 8 : Gilson_220, Emma1919_223, DeluluLabubu_225, MeganTheeKilla_225, Maupel_223
- Track 9 : Stigma_219
- Track 10 : Phredrick_225, Kenrey_226
- Track 11 : TunaTartare_220
- Track 12 : Sham_212
- Track 13 : SparkleGoddess_220
- Track 14 : Muntaha_240
- Track 15 : Chaewon_228
- Track 16 : Wakanda_236
- Track 17 : Circinus_225
- Track 18 : BillNye_225

Summary of Final Annotations (See graph section above for start numbers):

The start number called the most often in the published annotations is 7, it was called in 24 of the 28 non-draft genes in the pham.

Genes that call this "Most Annotated" start:

- Belfort_220, BillNye_225, Chaewon_228, Circinus_225, Comrade_217, DeluluLabubu_225, Emma1919_223, Faust_217, Forrest_223, Francob_225, Gilson_220, Jada_222, Karp_216, Kenrey_226, Maupel_223, MeganTheeKilla_225, Moab_222, Muntaha_240, Patelgo_223, Phredrick_225, SeresaTree_221, Sham_212, SparkleGoddess_220, Stigma_219, TunaTartare_220, Wakanda_236, Westy_224,

Genes that have the "Most Annotated" start but do not call it:

-

Genes that do not have the "Most Annotated" start:

- Annadreamy_207, Beuffert_215, Blueeyedbeauty_216, Limpid_214,

Summary by start number:

Start 6:

- Found in 4 of 31 (12.9%) of genes in pham
- Manual Annotations of this start: 4 of 28
- Called 100.0% of time when present
- Phage (with cluster) where this start called: Annadreamy_207 (BK1), Beuffert_215 (BK1), Blueeyedbeauty_216 (BK1), Limpid_214 (BK1),

Start 7:

- Found in 27 of 31 (87.1%) of genes in pham
- Manual Annotations of this start: 24 of 28
- Called 100.0% of time when present
- Phage (with cluster) where this start called: Belfort_220 (BK1), BillNye_225 (BK2), Chaewon_228 (BK2), Circinus_225 (BK2), Comrade_217 (BK1), DeluluLabubu_225 (BK1), Emma1919_223 (BK1), Faust_217 (BK1), Forrest_223 (BK1), Francob_225 (BK1), Gilson_220 (BK1), Jada_222 (BK1), Karp_216 (BK1), Kenrey_226 (BK1), Maupel_223 (BK1), MeganTheeKilla_225 (BK1), Moab_222 (BK1), Muntaha_240 (BK2), Patelgo_223 (BK1), Phredrick_225 (BK1), SeresaTree_221 (BK1), Sham_212 (BK1), SparkleGoddess_220 (BK1), Stigma_219 (BK1), TunaTartare_220 (BK1), Wakanda_236 (BK2), Westy_224 (BK1),

Summary by clusters:

There are 2 clusters represented in this pham: BK1, BK2,

Info for manual annotations of cluster BK1:

- Start number 6 was manually annotated 4 times for cluster BK1.
- Start number 7 was manually annotated 20 times for cluster BK1.

Info for manual annotations of cluster BK2:

- Start number 7 was manually annotated 4 times for cluster BK2.

Gene Information:

Gene: Annadreamy_207 Start: 104711, Stop: 105034, Start Num: 6

Candidate Starts for Annadreamy_207:

(Start: 6 @104711 has 4 MA's), (8, 104717), (18, 104798), (21, 104825), (27, 104864), (29, 104870), (30, 104876), (31, 104879), (33, 104885), (36, 104987), (37, 104993),

Gene: Belfort_220 Start: 109294, Stop: 109542, Start Num: 7

Candidate Starts for Belfort_220:

(3, 109264), (Start: 7 @109294 has 24 MA's), (9, 109300), (13, 109321), (14, 109333), (17, 109369), (18, 109381), (22, 109411), (26, 109438), (27, 109447), (33, 109468),

Gene: Beuffert_215 Start: 108879, Stop: 109202, Start Num: 6

Candidate Starts for Beuffert_215:

(Start: 6 @108879 has 4 MA's), (8, 108885), (18, 108966), (21, 108993), (22, 108996), (27, 109032), (29, 109038), (30, 109044), (33, 109053), (36, 109155), (37, 109161),

Gene: BillNye_225 Start: 115514, Stop: 115792, Start Num: 7

Candidate Starts for BillNye_225:

(Start: 7 @115514 has 24 MA's), (14, 115553), (17, 115589), (20, 115622), (25, 115655), (27, 115667), (28, 115670), (29, 115673), (32, 115685),

Gene: Blueeyedbeauty_216 Start: 108411, Stop: 108734, Start Num: 6

Candidate Starts for Blueeyedbeauty_216:

(Start: 6 @108411 has 4 MA's), (8, 108417), (18, 108498), (21, 108525), (22, 108528), (27, 108564), (29, 108570), (30, 108576), (33, 108585), (36, 108687), (37, 108693),

Gene: Chaewon_228 Start: 115929, Stop: 116207, Start Num: 7

Candidate Starts for Chaewon_228:

(Start: 7 @115929 has 24 MA's), (14, 115968), (16, 115989), (25, 116070), (27, 116082), (28, 116085), (29, 116088), (32, 116100),

Gene: Circinus_225 Start: 115103, Stop: 115381, Start Num: 7

Candidate Starts for Circinus_225:

(5, 115100), (Start: 7 @115103 has 24 MA's), (14, 115142), (17, 115178), (20, 115211), (25, 115244), (27, 115256), (28, 115259), (29, 115262), (32, 115274),

Gene: Comrade_217 Start: 109494, Stop: 109742, Start Num: 7

Candidate Starts for Comrade_217:

(3, 109464), (Start: 7 @109494 has 24 MA's), (9, 109500), (13, 109521), (14, 109533), (17, 109569), (18, 109581), (22, 109611), (26, 109638), (27, 109647), (33, 109668),

Gene: DeluluLabubu_225 Start: 109548, Stop: 109835, Start Num: 7

Candidate Starts for DeluluLabubu_225:

(2, 109512), (4, 109533), (Start: 7 @109548 has 24 MA's), (10, 109557), (12, 109563), (15, 109602), (18, 109635), (27, 109701), (33, 109722),

Gene: Emma1919_223 Start: 108070, Stop: 108357, Start Num: 7

Candidate Starts for Emma1919_223:

(2, 108034), (4, 108055), (Start: 7 @108070 has 24 MA's), (10, 108079), (12, 108085), (15, 108124), (18, 108157), (27, 108223), (33, 108244),

Gene: Faust_217 Start: 110060, Stop: 110392, Start Num: 7

Candidate Starts for Faust_217:

(1, 110000), (Start: 7 @110060 has 24 MA's), (11, 110072), (13, 110087), (23, 110189), (27, 110213), (30, 110225), (37, 110342),

Gene: Forrest_223 Start: 109035, Stop: 109322, Start Num: 7

Candidate Starts for Forrest_223:

(2, 108999), (4, 109020), (Start: 7 @109035 has 24 MA's), (10, 109044), (12, 109050), (14, 109074), (15, 109089), (18, 109122), (27, 109188), (33, 109209),

Gene: Francob_225 Start: 109083, Stop: 109376, Start Num: 7

Candidate Starts for Francob_225:

(2, 109050), (Start: 7 @109083 has 24 MA's), (10, 109092), (18, 109170), (19, 109179), (23, 109212), (27, 109236), (33, 109257),

Gene: Gilson_220 Start: 107596, Stop: 107883, Start Num: 7

Candidate Starts for Gilson_220:

(2, 107560), (4, 107581), (Start: 7 @107596 has 24 MA's), (10, 107605), (12, 107611), (15, 107650), (18, 107683), (27, 107749), (33, 107770),

Gene: Jada_222 Start: 108272, Stop: 108559, Start Num: 7

Candidate Starts for Jada_222:

(2, 108236), (4, 108257), (Start: 7 @108272 has 24 MA's), (10, 108281), (12, 108287), (14, 108311), (15, 108326), (18, 108359), (27, 108425), (33, 108446),

Gene: Karp_216 Start: 109661, Stop: 109909, Start Num: 7

Candidate Starts for Karp_216:

(3, 109631), (Start: 7 @109661 has 24 MA's), (9, 109667), (13, 109688), (14, 109700), (17, 109736), (18, 109748), (22, 109778), (26, 109805), (27, 109814), (33, 109835),

Gene: Kenrey_226 Start: 108842, Stop: 109135, Start Num: 7

Candidate Starts for Kenrey_226:

(Start: 7 @108842 has 24 MA's), (10, 108851), (12, 108857), (13, 108869), (15, 108896), (17, 108917), (18, 108929), (22, 108959), (24, 108974), (27, 108995), (33, 109016), (35, 109070),

Gene: Limpid_214 Start: 110024, Stop: 110347, Start Num: 6

Candidate Starts for Limpid_214:

(Start: 6 @110024 has 4 MA's), (8, 110030), (18, 110111), (21, 110138), (27, 110177), (29, 110183), (30, 110189), (31, 110192), (33, 110198), (36, 110300), (37, 110306),

Gene: Maupel_223 Start: 107596, Stop: 107883, Start Num: 7

Candidate Starts for Maupel_223:

(2, 107560), (4, 107581), (Start: 7 @107596 has 24 MA's), (10, 107605), (12, 107611), (15, 107650), (18, 107683), (27, 107749), (33, 107770),

Gene: MeganTheeKilla_225 Start: 108467, Stop: 108754, Start Num: 7

Candidate Starts for MeganTheeKilla_225:

(2, 108431), (4, 108452), (Start: 7 @108467 has 24 MA's), (10, 108476), (12, 108482), (15, 108521), (18, 108554), (27, 108620), (33, 108641),

Gene: Moab_222 Start: 110575, Stop: 110913, Start Num: 7

Candidate Starts for Moab_222:

(Start: 7 @110575 has 24 MA's), (9, 110581), (12, 110590), (13, 110602), (18, 110662), (20, 110683), (27, 110728), (33, 110749),

Gene: Muntaha_240 Start: 115773, Stop: 116012, Start Num: 7

Candidate Starts for Muntaha_240:

(Start: 7 @115773 has 24 MA's), (17, 115848), (22, 115890), (23, 115902), (26, 115917), (27, 115926), (29, 115932), (34, 115971),

Gene: Patelgo_223 Start: 111005, Stop: 111343, Start Num: 7

Candidate Starts for Patelgo_223:

(Start: 7 @111005 has 24 MA's), (9, 111011), (12, 111020), (13, 111032), (18, 111092), (20, 111113), (27, 111158), (33, 111179),

Gene: Phredrick_225 Start: 107894, Stop: 108187, Start Num: 7

Candidate Starts for Phredrick_225:

(Start: 7 @107894 has 24 MA's), (10, 107903), (12, 107909), (13, 107921), (15, 107948), (17, 107969), (18, 107981), (22, 108011), (24, 108026), (27, 108047), (33, 108068), (35, 108122),

Gene: SeresaTree_221 Start: 110046, Stop: 110378, Start Num: 7

Candidate Starts for SeresaTree_221:

(1, 109986), (Start: 7 @110046 has 24 MA's), (11, 110058), (13, 110073), (23, 110175), (27, 110199), (30, 110211), (37, 110328),

Gene: Sham_212 Start: 110948, Stop: 111280, Start Num: 7

Candidate Starts for Sham_212:

(Start: 7 @110948 has 24 MA's), (11, 110960), (13, 110975), (14, 110987), (27, 111101), (37, 111230), (38, 111233), (39, 111245),

Gene: SparkleGoddess_220 Start: 109722, Stop: 109970, Start Num: 7

Candidate Starts for SparkleGoddess_220:

(Start: 7 @109722 has 24 MA's), (9, 109728), (13, 109749), (14, 109761), (17, 109797), (18, 109809), (22, 109839), (26, 109866), (27, 109875), (33, 109896),

Gene: Stigma_219 Start: 109928, Stop: 110176, Start Num: 7

Candidate Starts for Stigma_219:

(Start: 7 @109928 has 24 MA's), (9, 109934), (13, 109955), (14, 109967), (17, 110003), (18, 110015), (22, 110045), (26, 110072), (27, 110081), (33, 110102), (34, 110126),

Gene: TunaTartare_220 Start: 113242, Stop: 113574, Start Num: 7

Candidate Starts for TunaTartare_220:

(Start: 7 @113242 has 24 MA's), (11, 113254), (13, 113269), (14, 113281), (15, 113296), (27, 113395), (30, 113407), (38, 113527), (39, 113539),

Gene: Wakanda_236 Start: 114761, Stop: 115000, Start Num: 7

Candidate Starts for Wakanda_236:

(Start: 7 @114761 has 24 MA's), (17, 114836), (22, 114878), (23, 114890), (26, 114905), (27, 114914), (29, 114920), (34, 114959),

Gene: Westy_224 Start: 110715, Stop: 110963, Start Num: 7

Candidate Starts for Westy_224:

(3, 110685), (Start: 7 @110715 has 24 MA's), (9, 110721), (13, 110742), (14, 110754), (17, 110790), (18, 110802), (22, 110832), (26, 110859), (27, 110868), (33, 110889),