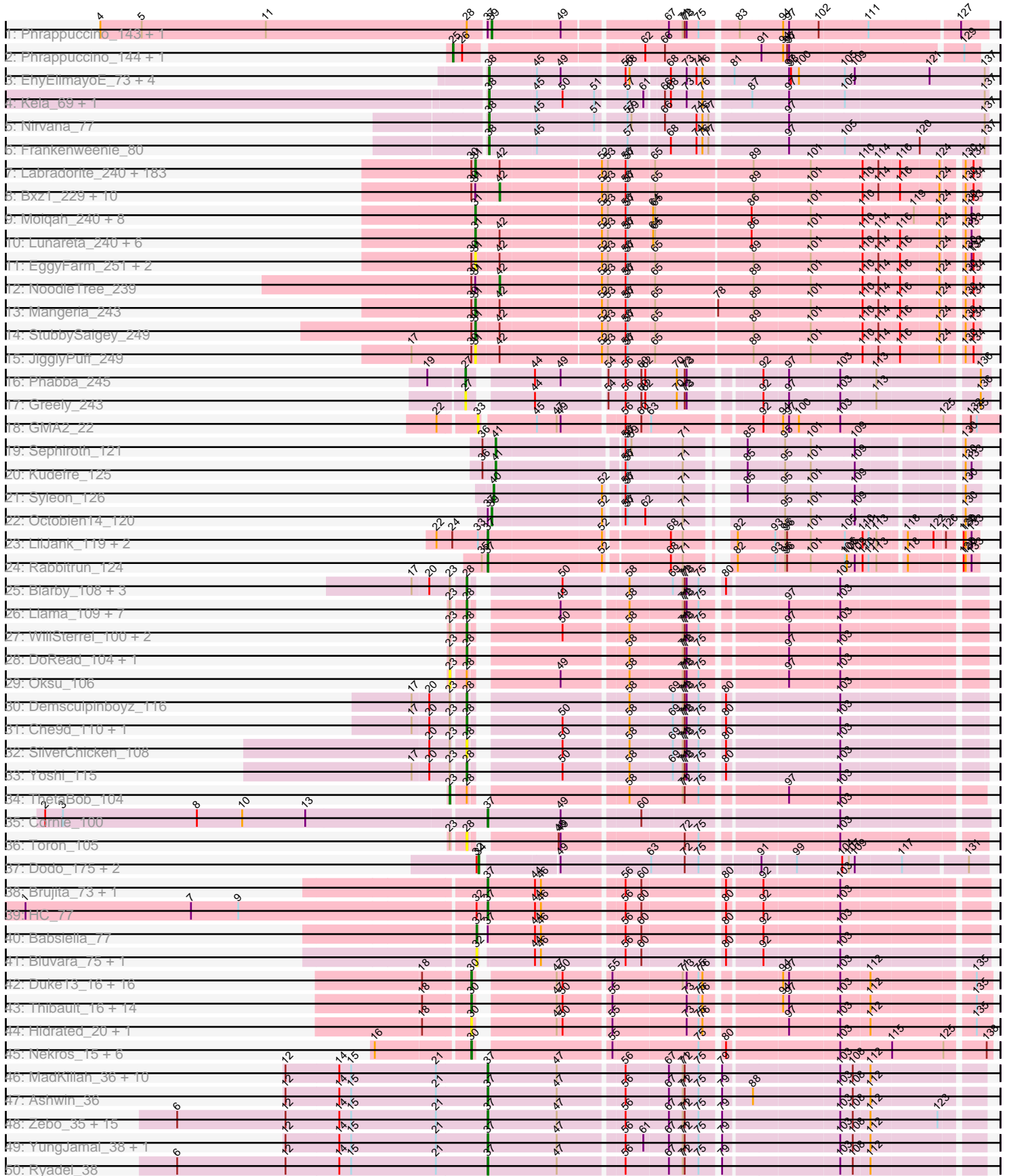
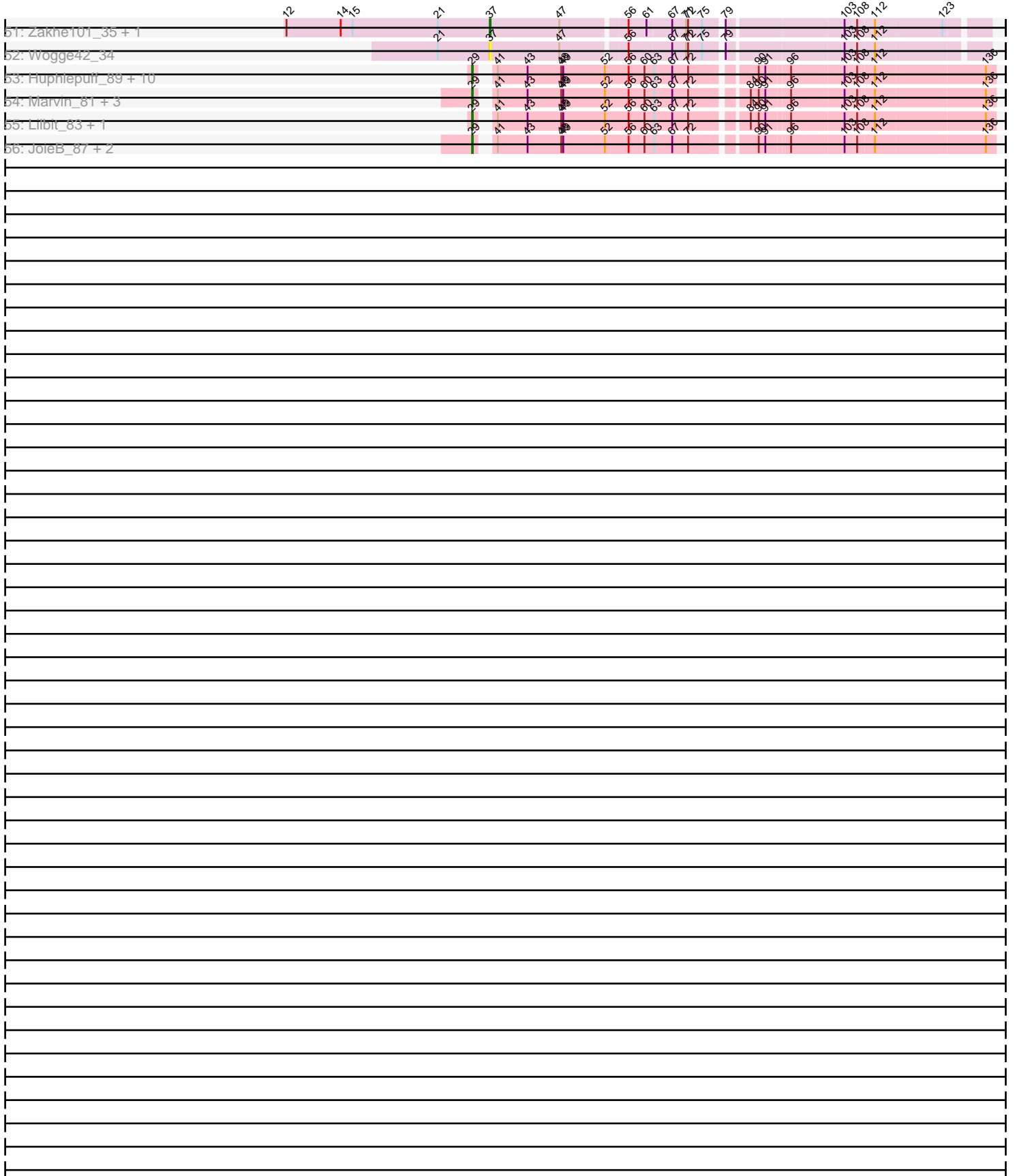


Pham 307907



Pham 307907



Note: Tracks are now grouped by subcluster and scaled. Switching in subcluster is indicated by changes in track color. Track scale is now set by default to display the region 30 bp upstream of start 1 to 30 bp downstream of the last possible start. If this default region is judged to be packed too tightly with annotated starts, the track will be further scaled to only show that region of the ORF with annotated starts. This action will be indicated by adding "Zoomed" to the title. For starts, yellow indicates the location of called starts comprised solely of Glimmer/GeneMark auto-annotations, green indicates the location of called starts with at least 1 manual gene annotation.

Pham 307907 Report

This analysis was run 06/27/26 on database version 652.

Pham number 307907 has 372 members, 57 are drafts.

Phages represented in each track:

- Track 1 : Phrappuccino_143, Settecandela_143
- Track 2 : Phrappuccino_144, Settecandela_144
- Track 3 : EhyElimayoE_73, Satis_73, Quantum_72, Kradal_73, Sarkar_73
- Track 4 : Kela_69, JustBecause_68
- Track 5 : Nirvana_77
- Track 6 : Frankenweenie_80
- Track 7 : Labradorite_240, LifeSavor_244, Pivoine_244, Issimir_236, TinyTim_241, ET08_229, QBert_235, Grungle_225, Naija_244, Kboogie_247, Darko_242, Daffodil_249, Capablanca_248, Delylah_245, Khaleesi_242, Erdmann_244, Adlitam_243, Ronan_239, Gizmo_248, Bipolarisk_241, Guwapp_239, EmmaElysia_248, YoungMoneyMata_243, McWolfish_240, Vortrix_261, Cali_233, Cane17_232, BananaFence_240, Jezreel_240, Tonenili_265, Janiyra_246, Bonray_245, Shaqnato_234, Astraea_238, Pio_250, Dandelion_249, Fixie_242, BadAgartude_237, Ava3_240, Asterius_243, Chomp_242, Lee7_242, Melpomini_238, Blackdragon_238, Phox_244, Ewok_242, Substance289_239, Naval22_250, Gamgam_245, YemiJoy2021_244, Mikro_237, Breeniome_243, Ghost_243, OrediggerDelux_238, NedWong_242, ScottMcG_235, Jemmno_243, Momo_245, Jaygup_240, Ablatia_242, Quasimodo_246, ChaylaJr_242, ArcherS7_244, Megamind_240, Lethe_241, Rocha_239, Belieber_235, Norm_243, LolaVinca_239, ParkTD_242, MoMoMixon_239, McGee_244, SmallFry_244, Rahel_245, Jedediah_245, Fongie_243, Cleatunium_235, ChickenPhender_239, Yucca_243, Specks_247, Demodog_249, InigoMontoya_247, Zalkecks_242, Fludd_243, NuevoMundo_245, BackyardAgain_238, Caravan_233, Bangla1971_244, FoxtrotP1_241, Littleton_247, Halldule_235, Trinitium_239, Koguma_242, Izajani_239, BeanWater_236, ValleyTerrace_244, SoilZilla_236, DTDevon_244, Lukilu_232, JPickles_240, LRRHood_235, Latch_243, ShiaLabeouf_241, Burrough_244, PharkleMinkus_245, Kamryn_242, Basquiat_240, Ading_245, Amataga_244, Tortoise16_241, Napoleon13_240, Shrimp_245, Bowman_240, Bread_239, Ngannou_238, Turret_234, Yassified_239, Pleione_247, Bezza_231, Dessert_240, Sauce_240, Domi_237, Derek_239, Jessibeth14_243, Gabriel_246, Salacia_244, JustHall_237, Essence_241, DrPhinkDaddy_240, EmToTheThree_243, CindyLou_244, Concombre_248, SilverDipper_248, I3_253, Babyland_246, Pier_242, Morizzled23_240, Pupusa_246, Tainan_243, Wally_241, Matsumoto_241, Duckfeet_237, InterFolia_245, Teardrop_241, Patter_245, Maby2021_243, LinStu_240, Colt_233, Spec_237, LordLeafolot_244, Phlegm_248, RoMag_238, IkeLoa_237, Roots515_246, MikeLiesIn_244, Atlantean_243, Blackbrain_241, Phusco_242, Loanshark_240, Shelob_244, Shnickers_242, Chargie21_240,

EasyJones_244, Audrick_246, Nappy_242, Bigswole_248, JulietS_232, Nidhogg_244, FrayBell_246, LookingGlass_241, Zeenon_244, FudgeTart_238, Iota_240, Delilah_241, ZygoTaiga_239, CharlieB_238, SrishMeg2525_240, ErnieJ_236, StephanieG_237, GlutenPhree_244, Tyke_240, PurduePete_243, Primadonna_237, Willis_244

- Track 8 : Bxz1_229, SVoro_238, Cactojaque_237, Rizal_232, Dietrick_232, Spud_235, Catera_232, Sprinklers_241, Blubba_230, BobaPhatt_234, Drazdys_240
- Track 9 : Moiqah_240, Shifa_220, Stubby_226, Moby_240, HyRo_228, Rabinovish_236, Pinkcreek_223, Alice_229, Flabslab_237
- Track 10 : Lunareta_240, JayJay_243, DirtMonster_232, Sebata_243, DeejaClivia_230, Maturis_237, Montpel_240
- Track 11 : EggyFarm_251, Grasshills_250, BigCity_251
- Track 12 : NoodleTree_239
- Track 13 : Mangeria_243
- Track 14 : StubbySaigey_249
- Track 15 : JigglyPuff_249
- Track 16 : Phabba_245
- Track 17 : Greely_243
- Track 18 : GMA2_22
- Track 19 : Sephiroth_121
- Track 20 : Kudrefre_125
- Track 21 : Syleon_126
- Track 22 : Octobien14_120
- Track 23 : LilJank_119, Trax_123, Neville_122
- Track 24 : Rabbitrun_124
- Track 25 : Blarby_108, Jabbawokkie_107, Avani_106, Zapner_107
- Track 26 : Llama_109, Ochi17_108, Seabastian_109, Jinglebell_109, Nichirin_102, Modragons_105, OfUltron_109, AlpineSix_100
- Track 27 : WillSterrel_100, IrishSherpFalk_102, Che8_109
- Track 28 : DoRead_104, Blexus_99
- Track 29 : Oksu_106
- Track 30 : Demsculpinboyz_116
- Track 31 : Che9d_110, Soul22_101
- Track 32 : SilverChicken_108
- Track 33 : Yoshi_115
- Track 34 : ThetaBob_104
- Track 35 : Cornie_100
- Track 36 : Toron_105
- Track 37 : Dodo_175, PauloDiaboli_180, A3Wally_180
- Track 38 : Brujita_73, Island3_75
- Track 39 : HC_77
- Track 40 : Babsiella_77
- Track 41 : Bluvara_75, PaintedDog_76
- Track 42 : Duke13_16, BAKA_16, HokkenD_15, Bombitas_17, Phoebus_20, Beem_20, Schatzie_18, Hughesyang_19, NihilNomen_19, Xiaokay_17, Pound_20, EricMillard_20, Constella_15, Optimus_17, ThreeRngTarjay_19, Bobby_21, Dove_17
- Track 43 : Thibault_16, Minerva_19, Klein_20, Ejimix_21, JuicyJay_21, DmpstrDiver_19, Zelink_20, Kalah2_20, Redno2_19, Wanda_20, Bagrid_18, Yeet_18, Odette_19, Halley_20, Dallas_19
- Track 44 : Hidrated_20, Marleymoo_21
- Track 45 : Nekros_15, Porcelain_17, KashFlow_11, Hannaconda_14, Courthouse_17, MiaZeal_17, Superphikiman_17

- Track 46 : MadKillah_36, Wildflower_35, Vorrrps_34, Bora_32, Smooch_37, Krili_34, Mori_34, NiebruSaylor_34, Corndog_37, Murai_35, Schuy_36
- Track 47 : Ashwin_36
- Track 48 : Zebo_35, TelAviv_32, SchoolBus_35, Catdawg_35, Blessica_36, Idergollasper_35, FoulBall_35, KingPhillip3_35, JangDynasty_35, YoyoKar_33, Shida_35, Imara_33, Alkhayr_35, Vagabond_35, Familton_36, Winget_36
- Track 49 : YungJamal_38, Firecracker_35
- Track 50 : Ryadel_38
- Track 51 : Zakhe101_35, Dylan_34
- Track 52 : Wogge42_34
- Track 53 : Huphlepuff_89, RedRaider77_86, MosMoris_81, Poise_87, Corazon_82, GoongGoong_86, Caprice_79, Gattaca_84, Raela_88, Tesla_82, Blackbeetle_87
- Track 54 : Marvin_81, FeliMaine_87, Beelzebub_91, Pringar_83
- Track 55 : Lilbit_83, LittleLaf_85
- Track 56 : JoieB_87, VasuNzinga_84, Clarkson_88

Summary of Final Annotations (See graph section above for start numbers):

The start number called the most often in the published annotations is 31, it was called in 170 of the 315 non-draft genes in the pham.

Genes that call this "Most Annotated" start:

- Ablatia_242, Ading_245, Adlitam_243, Alice_229, Amataga_244, ArcherS7_244, Asterius_243, Astraea_238, Atlantean_243, Audrick_246, Ava3_240, Babyland_246, BackyardAgain_238, BadAgartude_237, BananaFence_240, Bangla1971_244, Basquiat_240, BeanWater_236, Belieber_235, Bezza_231, BigCity_251, Bigswole_248, Bipolarisk_241, Blackbrain_241, Blackdragon_238, Bonray_245, Bowman_240, Bread_239, Breeniome_243, Burrough_244, Cali_233, Cane17_232, Capablanca_248, Caravan_233, Chargie21_240, CharlieB_238, ChaylaJr_242, ChickenPhender_239, Chomp_242, CindyLou_244, Cleatunium_235, Colt_233, Concombre_248, DTDevon_244, Daffodil_249, Dandelion_249, Darko_242, DeejaClivia_230, Delilah_241, Delylah_245, Demodog_249, Derek_239, Dessert_240, DirtMonster_232, Domi_237, DrPhinkDaddy_240, Duckfeet_237, ET08_229, EasyJones_244, EggyFarm_251, EmToTheThree_243, EmmaElysia_248, Erdmann_244, ErnieJ_236, Essence_241, Ewok_242, Fixie_242, Flabslab_237, Fludd_243, Fongie_243, FoxtrotP1_241, FrayBell_246, FudgeTart_238, Gabriel_246, Gamgam_245, Ghost_243, Gizmo_248, GlutenPhree_244, Grasshills_250, Grungle_225, Guwapp_239, Halldule_235, HyRo_228, I3_253, IkeLoa_237, InigoMontoya_247, InterFolia_245, Iota_240, Issimir_236, Izajani_239, JPickles_240, Janiyra_246, JayJay_243, Jaygup_240, Jedediah_245, Jemmno_243, Jessibeth14_243, Jezreel_240, JigglyPuff_249, JulietS_232, JustHall_237, Kamryn_242, Kboogie_247, Khaleesi_242, Koguma_242, LRRHood_235, Labradorite_240, Latch_243, Lee7_242, Lethe_241, LifeSavor_244, LinStu_240, Littleton_247, Loanshark_240, LolaVinca_239, LookingGlass_241, LordLeafolot_244, Lukilu_232, Lunareta_240, Maby2021_243, Mangeria_243, Matsumoto_241, Maturis_237, McGee_244, McWolfish_240, Megamind_240, Melpomini_238, MikeLiesIn_244, Mikro_237, MoMoMixon_239, Moby_240, Moiqah_240, Momo_245, Montpel_240, Morizzled23_240, Naija_244, Napoleon13_240, Nappy_242, Naval22_250, NedWong_242, Ngannou_238, Nidhogg_244, Norm_243, NuevoMundo_245, OrediggerDelux_238, ParkTD_242,

Patter_245, PharkleMinkus_245, Phlegm_248, Phox_244, Phusco_242, Pier_242, Pinkcreek_223, Pio_250, Pivoine_244, Pleione_247, Primadonna_237, Pupusa_246, PurduePete_243, QBert_235, Quasimodo_246, Rabinovich_236, Rahel_245, RoMag_238, Rocha_239, Ronan_239, Roots515_246, Salacia_244, Sauce_240, ScottMcG_235, Sebata_243, Shaqato_234, Shelob_244, ShiaLabeouf_241, Shifa_220, Shnickers_242, Shrimp_245, SilverDipper_248, SmallFry_244, SoilZilla_236, Spec_237, Specks_247, SrishMeg2525_240, StephanieG_237, StubbySaigey_249, Stubby_226, Substance289_239, Tainan_243, Teardrop_241, TinyTim_241, Tonenili_265, Tortoise16_241, Trinitium_239, Turret_234, Tyke_240, ValleyTerrace_244, Vortrix_261, Wally_241, Willis_244, Yassified_239, YemiJoy2021_244, YoungMoneyMata_243, Yucca_243, Zalkecks_242, Zeenon_244, ZygoTaiga_239,

Genes that have the "Most Annotated" start but do not call it:

- Blubba_230, BobaPhatt_234, Bxz1_229, Cactojaque_237, Catera_232, Dietrick_232, Drazdys_240, NoodleTree_239, Rizal_232, SVoro_238, Sprinklers_241, Spud_235,

Genes that do not have the "Most Annotated" start:

- A3Wally_180, Alkhayr_35, AlpineSix_100, Ashwin_36, Avani_106, BAKA_16, Babsiella_77, Bagrid_18, Beelzebub_91, Beem_20, Blackbeetle_87, Blarby_108, Blessica_36, Blexus_99, Bluvara_75, Bobby_21, Bombitas_17, Bora_32, Brujita_73, Caprice_79, Catdawg_35, Che8_109, Che9d_110, Clarkson_88, Constella_15, Corazon_82, Corndog_37, Cornie_100, Courthouse_17, Dallas_19, Demsculpinboyz_116, DmpstrDiver_19, DoRead_104, Dodo_175, Dove_17, Duke13_16, Dylan_34, EhyElimayoE_73, Ejimix_21, EricMillard_20, Familton_36, FeliMaine_87, Firecracker_35, FoulBall_35, Frankenweenie_80, GMA2_22, Gattaca_84, GoongGoong_86, Greely_243, HC_77, Halley_20, Hannaconda_14, Hidrated_20, HokkenD_15, Hughesyang_19, Huphlepuuff_89, Idergollasper_35, Imara_33, IrishSherpFalk_102, Island3_75, Jabbawokkie_107, JangDynasty_35, Jinglebell_109, JoieB_87, JuicyJay_21, JustBecause_68, Kalah2_20, KashFlow_11, Kela_69, KingPhillip3_35, Klein_20, Kradal_73, Krili_34, Kudrefre_125, LilJank_119, Lilbit_83, LittleLaf_85, Llama_109, MadKillah_36, Marleymoo_21, Marvin_81, MiaZeal_17, Minerva_19, Modragons_105, Mori_34, MosMoris_81, Murai_35, Nekros_15, Neville_122, Nichirin_102, NiebruSaylor_34, NihilNomen_19, Nirvana_77, Ochi17_108, Octobien14_120, Odette_19, OfUltron_109, Oksu_106, Optimus_17, PaintedDog_76, PauloDiaboli_180, Phabba_245, Phoebus_20, Phrappuccino_143, Phrappuccino_144, Poise_87, Porcelain_17, Pound_20, Pringar_83, Quantum_72, Rabbitrun_124, Raela_88, RedRaider77_86, Redno2_19, Ryadel_38, Sarkar_73, Satis_73, Schatzie_18, SchoolBus_35, Schuy_36, Seabastian_109, Sephiroth_121, Settecandela_143, Settecandela_144, Shida_35, SilverChicken_108, Smooch_37, Soul22_101, Superphikiman_17, Syleon_126, TelAviv_32, Tesla_82, ThetaBob_104, Thibault_16, ThreeRngTarjay_19, Toron_105, Trax_123, Vagabond_35, VasuNzinga_84, Vorrps_34, Wanda_20, Wildflower_35, WillSterrel_100, Winget_36, Wogge42_34, Xiaokay_17, Yeet_18, Yoshi_115, YoyoKar_33, YungJamal_38, Zakhe101_35, Zapner_107, Zebo_35, Zelink_20,

Summary by start number:

Start 23:

- Found in 25 of 372 (6.7%) of genes in pham
- Manual Annotations of this start: 1 of 315
- Called 8.0% of time when present

- Phage (with cluster) where this start called: Oksu_106 (F1), ThetaBob_104 (F4),

Start 25:

- Found in 2 of 372 (0.5%) of genes in pham
- Manual Annotations of this start: 2 of 315
- Called 100.0% of time when present
- Phage (with cluster) where this start called: Phrappuccino_144 (AA), Settecandela_144 (AA),

Start 27:

- Found in 2 of 372 (0.5%) of genes in pham
- Manual Annotations of this start: 1 of 315
- Called 100.0% of time when present
- Phage (with cluster) where this start called: Greely_243 (C2), Phabba_245 (C2),

Start 28:

- Found in 27 of 372 (7.3%) of genes in pham
- Manual Annotations of this start: 19 of 315
- Called 85.2% of time when present
- Phage (with cluster) where this start called: AlpineSix_100 (F1), Avani_106 (F2), Blarby_108 (F), Blexus_99 (F1), Che8_109 (F1), Che9d_110 (F2), Demsculpinboyz_116 (F2), DoRead_104 (F1), IrishSherpFalk_102 (F1), Jabbawokkie_107 (F2), Jinglebell_109 (F1), Llama_109 (F1), Modragons_105 (F1), Nichirin_102 (F1), Ochi17_108 (F1), OfUltron_109 (F1), Seabastian_109 (F1), SilverChicken_108 (F2), Soul22_101 (F2), Toron_105 (F6), WillSterrel_100 (F1), Yoshi_115 (F2), Zapner_107 (F2),

Start 29:

- Found in 20 of 372 (5.4%) of genes in pham
- Manual Annotations of this start: 19 of 315
- Called 100.0% of time when present
- Phage (with cluster) where this start called: Beelzebub_91 (S), Blackbeetle_87 (S), Caprice_79 (S), Clarkson_88 (S), Corazon_82 (S), FeliMaine_87 (S), Gattaca_84 (S), GoongGoong_86 (S), Huphlepuuff_89 (S), JoieB_87 (S), Lilbit_83 (S), LittleLaf_85 (S), Marvin_81 (S), MosMoris_81 (S), Poise_87 (S), Pringar_83 (S), Raela_88 (S), RedRaider77_86 (S), Tesla_82 (S), VasuNzinga_84 (S),

Start 30:

- Found in 243 of 372 (65.3%) of genes in pham
- Manual Annotations of this start: 35 of 315
- Called 16.9% of time when present
- Phage (with cluster) where this start called: BAKA_16 (J), Bagrid_18 (J), Beem_20 (J), Bobby_21 (J), Bombitas_17 (J), Constella_15 (J), Courthouse_17 (J), Dallas_19 (J), DmpstrDiver_19 (J), Dove_17 (J), Duke13_16 (J), Ejimix_21 (J), EricMillard_20 (J), Halley_20 (J), Hannaconda_14 (J), Hidrated_20 (J), HokkenD_15 (J), Hughesyang_19 (J), JuicyJay_21 (J), Kalah2_20 (J), KashFlow_11 (J), Klein_20 (J), Marleymoo_21 (J), MiaZeal_17 (J), Minerva_19 (J), Nekros_15 (J), NihilNomen_19 (J), Odette_19 (J), Optimus_17 (J), Phoebus_20 (J), Porcelain_17 (J), Pound_20 (J), Redno2_19 (J), Schatzie_18 (J), Superphikiman_17 (J), Thibault_16 (J), ThreeRngTarjay_19 (J), Wanda_20 (J), Xiaokay_17 (J), Yeet_18 (J), Zelink_20 (J),

Start 31:

- Found in 218 of 372 (58.6%) of genes in pham

- Manual Annotations of this start: 170 of 315
- Called 94.5% of time when present
- Phage (with cluster) where this start called: Ablatia_242 (C1), Ading_245 (C1), Adlitam_243 (C1), Alice_229 (C1), Amataga_244 (C1), ArcherS7_244 (C1), Asterius_243 (C1), Astraea_238 (C1), Atlantean_243 (C1), Audrick_246 (C1), Ava3_240 (C1), Babyland_246 (C1), BackyardAgain_238 (C1), BadAgartude_237 (C1), BananaFence_240 (C1), Bangla1971_244 (C1), Basquiat_240 (C1), BeanWater_236 (C1), Belieber_235 (C1), Bezza_231 (C1), BigCity_251 (C1), Bigswole_248 (C1), Bipolarisk_241 (C1), Blackbrain_241 (C1), Blackdragon_238 (C1), Bonray_245 (C1), Bowman_240 (C1), Bread_239 (C1), Breeniome_243 (C1), Burrough_244 (C1), Cali_233 (C1), Cane17_232 (C1), Capablanca_248 (C1), Caravan_233 (C1), Chargie21_240 (C1), CharlieB_238 (C1), ChaylaJr_242 (C1), ChickenPhender_239 (C1), Chomp_242 (C1), CindyLou_244 (C1), Cleatunium_235 (C1), Colt_233 (C1), Concombre_248 (C1), DTDevon_244 (C1), Daffodil_249 (C1), Dandelion_249 (C1), Darko_242 (C1), DeejaClivia_230 (C1), Delilah_241 (C1), Delylah_245 (C1), Demodog_249 (C1), Derek_239 (C1), Dessert_240 (C1), DirtMonster_232 (C1), Domi_237 (C1), DrPhinkDaddy_240 (C1), Duckfeet_237 (C1), ET08_229 (C1), EasyJones_244 (C1), EggyFarm_251 (C1), EmToTheThree_243 (C1), EmmaElysia_248 (C1), Erdmann_244 (C1), ErnieJ_236 (C1), Essence_241 (C1), Ewok_242 (C1), Fixie_242 (C1), Flabslab_237 (C1), Fludd_243 (C1), Fongie_243 (C1), FoxtrotP1_241 (C1), FrayBell_246 (C1), FudgeTart_238 (C1), Gabriel_246 (C1), Gamgam_245 (C1), Ghost_243 (C1), Gizmo_248 (C1), GlutenPhree_244 (C1), Grasshills_250 (C1), Grungle_225 (C1), Guwapp_239 (C1), Halldule_235 (C1), HyRo_228 (C1), I3_253 (C1), IkeLoa_237 (C1), InigoMontoya_247 (C1), InterFolia_245 (C1), Iota_240 (C1), Issimir_236 (C1), Izajani_239 (C1), JPickles_240 (C1), Janiyr_246 (C1), JayJay_243 (C1), Jaygup_240 (C1), Jedediah_245 (C1), Jemmno_243 (C1), Jessibeth14_243 (C1), Jezreel_240 (C1), JigglyPuff_249 (C1), JulietS_232 (C1), JustHall_237 (C1), Kamryn_242 (C1), Kboogie_247 (C1), Khaleesi_242 (C1), Koguma_242 (C1), LRRHood_235 (C1), Labradorite_240 (C1), Latch_243 (C1), Lee7_242 (C1), Lethe_241 (C1), LifeSavor_244 (C1), LinStu_240 (C1), Littleton_247 (C1), Loanshark_240 (C1), LolaVinca_239 (C1), LookingGlass_241 (C1), LordLeafolot_244 (C1), Lukilu_232 (C1), Lunareta_240 (C1), Maby2021_243 (C1), Mangeria_243 (C1), Matsumoto_241 (C1), Maturis_237 (C1), McGee_244 (C1), McWolfish_240 (C1), Megamind_240 (C1), Melpomini_238 (C1), MikeLiesIn_244 (C1), Mikro_237 (C1), MoMoMixon_239 (C1), Moby_240 (C1), Moiqah_240 (C1), Momo_245 (C1), Montpel_240 (C1), Morizzled23_240 (C1), Naija_244 (C1), Napoleon13_240 (C1), Nappy_242 (C1), Naval22_250 (C1), NedWong_242 (C1), Ngannou_238 (C1), Nidhogg_244 (C1), Norm_243 (C1), NuevoMundo_245 (C1), OrediggerDelux_238 (C1), ParkTD_242 (C1), Patter_245 (C1), PharkleMinkus_245 (C1), Phlegm_248 (C1), Phox_244 (C1), Phusco_242 (C1), Pier_242 (C1), Pinkcreek_223 (C1), Pio_250 (C1), Pivoine_244 (C1), Pleione_247 (C1), Primadonna_237 (C1), Pupusa_246 (C1), PurduePete_243 (C1), QBert_235 (C1), Quasimodo_246 (C1), Rabinovish_236 (C1), Rahel_245 (C1), RoMag_238 (C1), Rocha_239 (C1), Ronan_239 (C1), Roots515_246 (C1), Salacia_244 (C1), Sauce_240 (C1), ScottMcG_235 (C1), Sebata_243 (C1), Shaqnato_234 (C1), Shelob_244 (C1), ShiaLabeouf_241 (C1), Shifa_220 (C1), Shnickers_242 (C1), Shrimp_245 (C1), SilverDipper_248 (C1), SmallFry_244 (C1), SoilZilla_236 (C1), Spec_237 (C1), Specks_247 (C1), SrishMeg2525_240 (C1), StephanieG_237 (C1), StubbySaigey_249 (C1), Stubby_226 (C1), Substance289_239 (C1), Tainan_243 (C1), Teardrop_241 (C1), TinyTim_241 (C1), Tonerili_265 (C1), Tortoise16_241 (C1), Trinitium_239 (C1), Turret_234 (C1), Tyke_240 (C1), ValleyTerrace_244 (C1), Vortrix_261 (C1), Wally_241 (C1), Willis_244 (C1), Yassified_239 (C1), YemiJoy2021_244 (C1),

YoungMoneyMata_243 (C1), Yucca_243 (C1), Zalkecks_242 (C1), Zeenon_244 (C1), ZygoTaiga_239 (C1),

Start 32:

- Found in 7 of 372 (1.9%) of genes in pham
- Manual Annotations of this start: 1 of 315
- Called 42.9% of time when present
- Phage (with cluster) where this start called: Babsiella_77 (I1), Bluvara_75 (I3), PaintedDog_76 (I1),

Start 33:

- Found in 4 of 372 (1.1%) of genes in pham
- No Manual Annotations of this start.
- Called 25.0% of time when present
- Phage (with cluster) where this start called: GMA2_22 (DS),

Start 34:

- Found in 3 of 372 (0.8%) of genes in pham
- Manual Annotations of this start: 3 of 315
- Called 100.0% of time when present
- Phage (with cluster) where this start called: A3Wally_180 (GD1), Dodo_175 (GD1), PauloDiaboli_180 (GD1),

Start 37:

- Found in 46 of 372 (12.4%) of genes in pham
- Manual Annotations of this start: 38 of 315
- Called 91.3% of time when present
- Phage (with cluster) where this start called: Alkhayr_35 (O), Ashwin_36 (O), Blessica_36 (O), Bora_32 (O), Brujita_73 (I1), Catdawg_35 (O), Corndog_37 (O), Cornie_100 (F5), Dylan_34 (O), Familton_36 (O), Firecracker_35 (O), FoulBall_35 (O), HC_77 (I1), Idergollasper_35 (O), Imara_33 (O), Island3_75 (I1), JangDynasty_35 (O), KingPhillip3_35 (O), Krili_34 (O), LilJank_119 (DU2), MadKillah_36 (O), Mori_34 (O), Murai_35 (O), Neville_122 (DU2), NiebruSaylor_34 (O), Rabbitrun_124 (DU2), Ryadel_38 (O), SchoolBus_35 (O), Schuy_36 (O), Shida_35 (O), Smooch_37 (O), TelAviv_32 (O), Trax_123 (DU2), Vagabond_35 (O), Vorrrps_34 (O), Wildflower_35 (O), Winget_36 (O), Wogge42_34 (O), YoyoKar_33 (O), YungJamal_38 (O), Zakhe101_35 (O), Zebo_35 (O),

Start 38:

- Found in 9 of 372 (2.4%) of genes in pham
- Manual Annotations of this start: 9 of 315
- Called 100.0% of time when present
- Phage (with cluster) where this start called: EhyElimayoE_73 (BM), Frankenweenie_80 (BM), JustBecause_68 (BM), Kela_69 (BM), Kradal_73 (BM), Nirvana_77 (BM), Quantum_72 (BM), Sarkar_73 (BM), Satis_73 (BM),

Start 39:

- Found in 3 of 372 (0.8%) of genes in pham
- Manual Annotations of this start: 3 of 315
- Called 100.0% of time when present
- Phage (with cluster) where this start called: Octobien14_120 (DU1), Phrappuccino_143 (AA), Settecandela_143 (AA),

Start 40:

- Found in 1 of 372 (0.3%) of genes in pham
- Manual Annotations of this start: 1 of 315
- Called 100.0% of time when present
- Phage (with cluster) where this start called: Syleon_126 (DU1),

Start 41:

- Found in 22 of 372 (5.9%) of genes in pham
- Manual Annotations of this start: 2 of 315
- Called 9.1% of time when present
- Phage (with cluster) where this start called: Kudefre_125 (DU1), Sephiroth_121 (DU1),

Start 42:

- Found in 209 of 372 (56.2%) of genes in pham
- Manual Annotations of this start: 11 of 315
- Called 5.7% of time when present
- Phage (with cluster) where this start called: Blubba_230 (C1), BobaPhatt_234 (C1), Bxz1_229 (C1), Cactojaque_237 (C1), Catera_232 (C1), Dietrick_232 (C1), Drazdys_240 (C1), NoodleTree_239 (C1), Rizal_232 (C1), SVoro_238 (C1), Sprinklers_241 (C1), Spud_235 (C1),

Summary by clusters:

There are 19 clusters represented in this pham: AA, GD1, F2, F4, F5, F6, F, I1, BM, I3, J, O, F1, S, C2, DU1, C1, DS, DU2,

Info for manual annotations of cluster AA:

- Start number 25 was manually annotated 2 times for cluster AA.
- Start number 39 was manually annotated 2 times for cluster AA.

Info for manual annotations of cluster BM:

- Start number 38 was manually annotated 9 times for cluster BM.

Info for manual annotations of cluster C1:

- Start number 31 was manually annotated 170 times for cluster C1.
- Start number 42 was manually annotated 11 times for cluster C1.

Info for manual annotations of cluster C2:

- Start number 27 was manually annotated 1 time for cluster C2.

Info for manual annotations of cluster DU1:

- Start number 39 was manually annotated 1 time for cluster DU1.
- Start number 40 was manually annotated 1 time for cluster DU1.
- Start number 41 was manually annotated 2 times for cluster DU1.

Info for manual annotations of cluster DU2:

- Start number 37 was manually annotated 3 times for cluster DU2.

Info for manual annotations of cluster F1:

- Start number 28 was manually annotated 12 times for cluster F1.

Info for manual annotations of cluster F2:

- Start number 28 was manually annotated 7 times for cluster F2.

Info for manual annotations of cluster F4:

- Start number 23 was manually annotated 1 time for cluster F4.

Info for manual annotations of cluster F5:

- Start number 37 was manually annotated 1 time for cluster F5.

Info for manual annotations of cluster GD1:

- Start number 34 was manually annotated 3 times for cluster GD1.

Info for manual annotations of cluster I1:

- Start number 32 was manually annotated 1 time for cluster I1.
- Start number 37 was manually annotated 3 times for cluster I1.

Info for manual annotations of cluster J:

- Start number 30 was manually annotated 35 times for cluster J.

Info for manual annotations of cluster O:

- Start number 37 was manually annotated 31 times for cluster O.

Info for manual annotations of cluster S:

- Start number 29 was manually annotated 19 times for cluster S.

Gene Information:

Gene: A3Wally_180 Start: 99450, Stop: 100151, Start Num: 34

Candidate Starts for A3Wally_180:

(Start: 32 @99447 has 1 MA's), (Start: 34 @99450 has 3 MA's), (49, 99555), (63, 99681), (72, 99732), (75, 99753), (91, 99828), (99, 99876), (104, 99942), (107, 99951), (109, 99960), (117, 100029), (131, 100122),

Gene: Ablatia_242 Start: 133708, Stop: 134424, Start Num: 31

Candidate Starts for Ablatia_242:

(Start: 30 @133702 has 35 MA's), (Start: 31 @133708 has 170 MA's), (Start: 42 @133741 has 11 MA's), (52, 133888), (53, 133897), (56, 133924), (57, 133927), (65, 133966), (89, 134110), (101, 134194), (110, 134269), (114, 134290), (116, 134320), (124, 134377), (130, 134401), (134, 134413),

Gene: Ading_245 Start: 136141, Stop: 136857, Start Num: 31

Candidate Starts for Ading_245:

(Start: 30 @136135 has 35 MA's), (Start: 31 @136141 has 170 MA's), (Start: 42 @136174 has 11 MA's), (52, 136321), (53, 136330), (56, 136357), (57, 136360), (65, 136399), (89, 136543), (101, 136627), (110, 136702), (114, 136723), (116, 136753), (124, 136810), (130, 136834), (134, 136846),

Gene: Adlitam_243 Start: 134745, Stop: 135461, Start Num: 31

Candidate Starts for Adlitam_243:

(Start: 30 @134739 has 35 MA's), (Start: 31 @134745 has 170 MA's), (Start: 42 @134778 has 11 MA's), (52, 134925), (53, 134934), (56, 134961), (57, 134964), (65, 135003), (89, 135147), (101, 135231), (110, 135306), (114, 135327), (116, 135357), (124, 135414), (130, 135438), (134, 135450),

Gene: Alice_229 Start: 132036, Stop: 132746, Start Num: 31

Candidate Starts for Alice_229:

(Start: 31 @132036 has 170 MA's), (52, 132216), (53, 132225), (56, 132252), (57, 132255), (64, 132291), (65, 132294), (86, 132435), (101, 132519), (110, 132594), (119, 132666), (124, 132702), (130, 132726), (133, 132735),

Gene: Alkhayr_35 Start: 17670, Stop: 18362, Start Num: 37

Candidate Starts for Alkhayr_35:

(6, 17199), (12, 17364), (14, 17445), (15, 17463), (21, 17592), (Start: 37 @17670 has 38 MA's), (47, 17775), (56, 17865), (67, 17928), (71, 17949), (72, 17952), (75, 17973), (79, 17997), (103, 18162), (108, 18180), (112, 18204), (123, 18303),

Gene: AlpineSix_100 Start: 54932, Stop: 55630, Start Num: 28

Candidate Starts for AlpineSix_100:

(Start: 23 @54914 has 1 MA's), (Start: 28 @54932 has 19 MA's), (49, 55046), (58, 55136), (71, 55214), (72, 55217), (73, 55220), (75, 55238), (97, 55352), (103, 55427),

Gene: Amataga_244 Start: 133744, Stop: 134460, Start Num: 31

Candidate Starts for Amataga_244:

(Start: 30 @133738 has 35 MA's), (Start: 31 @133744 has 170 MA's), (Start: 42 @133777 has 11 MA's), (52, 133924), (53, 133933), (56, 133960), (57, 133963), (65, 134002), (89, 134146), (101, 134230), (110, 134305), (114, 134326), (116, 134356), (124, 134413), (130, 134437), (134, 134449),

Gene: ArcherS7_244 Start: 135489, Stop: 136205, Start Num: 31

Candidate Starts for ArcherS7_244:

(Start: 30 @135483 has 35 MA's), (Start: 31 @135489 has 170 MA's), (Start: 42 @135522 has 11 MA's), (52, 135669), (53, 135678), (56, 135705), (57, 135708), (65, 135747), (89, 135891), (101, 135975), (110, 136050), (114, 136071), (116, 136101), (124, 136158), (130, 136182), (134, 136194),

Gene: Ashwin_36 Start: 17680, Stop: 18372, Start Num: 37

Candidate Starts for Ashwin_36:

(12, 17374), (14, 17455), (15, 17473), (21, 17602), (Start: 37 @17680 has 38 MA's), (47, 17785), (56, 17875), (67, 17938), (71, 17959), (72, 17962), (75, 17983), (79, 18007), (88, 18046), (103, 18172), (108, 18190), (112, 18214),

Gene: Asterius_243 Start: 134153, Stop: 134869, Start Num: 31

Candidate Starts for Asterius_243:

(Start: 30 @134147 has 35 MA's), (Start: 31 @134153 has 170 MA's), (Start: 42 @134186 has 11 MA's), (52, 134333), (53, 134342), (56, 134369), (57, 134372), (65, 134411), (89, 134555), (101, 134639), (110, 134714), (114, 134735), (116, 134765), (124, 134822), (130, 134846), (134, 134858),

Gene: Astraea_238 Start: 133348, Stop: 134064, Start Num: 31

Candidate Starts for Astraea_238:

(Start: 30 @133342 has 35 MA's), (Start: 31 @133348 has 170 MA's), (Start: 42 @133381 has 11 MA's), (52, 133528), (53, 133537), (56, 133564), (57, 133567), (65, 133606), (89, 133750), (101, 133834), (110, 133909), (114, 133930), (116, 133960), (124, 134017), (130, 134041), (134, 134053),

Gene: Atlantean_243 Start: 133744, Stop: 134460, Start Num: 31

Candidate Starts for Atlantean_243:

(Start: 30 @133738 has 35 MA's), (Start: 31 @133744 has 170 MA's), (Start: 42 @133777 has 11 MA's), (52, 133924), (53, 133933), (56, 133960), (57, 133963), (65, 134002), (89, 134146), (101, 134230), (110, 134305), (114, 134326), (116, 134356), (124, 134413), (130, 134437), (134, 134449),

Gene: Audrick_246 Start: 133634, Stop: 134350, Start Num: 31

Candidate Starts for Audrick_246:

(Start: 30 @133628 has 35 MA's), (Start: 31 @133634 has 170 MA's), (Start: 42 @133667 has 11 MA's), (52, 133814), (53, 133823), (56, 133850), (57, 133853), (65, 133892), (89, 134036), (101, 134120), (110, 134195), (114, 134216), (116, 134246), (124, 134303), (130, 134327), (134, 134339),

Gene: Ava3_240 Start: 134204, Stop: 134920, Start Num: 31

Candidate Starts for Ava3_240:

(Start: 30 @134198 has 35 MA's), (Start: 31 @134204 has 170 MA's), (Start: 42 @134237 has 11 MA's), (52, 134384), (53, 134393), (56, 134420), (57, 134423), (65, 134462), (89, 134606), (101, 134690), (110, 134765), (114, 134786), (116, 134816), (124, 134873), (130, 134897), (134, 134909),

Gene: Avani_106 Start: 53056, Stop: 53754, Start Num: 28

Candidate Starts for Avani_106:

(17, 52984), (20, 53008), (Start: 23 @53038 has 1 MA's), (Start: 28 @53056 has 19 MA's), (50, 53173), (58, 53260), (69, 53323), (71, 53338), (72, 53341), (73, 53344), (75, 53362), (80, 53392), (103, 53551),

Gene: BAKA_16 Start: 12678, Stop: 13379, Start Num: 30

Candidate Starts for BAKA_16:

(18, 12612), (Start: 30 @12678 has 35 MA's), (47, 12783), (50, 12792), (55, 12858), (71, 12957), (73, 12963), (75, 12981), (76, 12987), (94, 13086), (97, 13095), (103, 13170), (112, 13212), (135, 13356),

Gene: Babsiella_77 Start: 47291, Stop: 47992, Start Num: 32

Candidate Starts for Babsiella_77:

(Start: 32 @47291 has 1 MA's), (Start: 37 @47294 has 38 MA's), (44, 47366), (46, 47375), (56, 47489), (60, 47513), (80, 47627), (92, 47675), (103, 47786),

Gene: Babyland_246 Start: 134521, Stop: 135237, Start Num: 31

Candidate Starts for Babyland_246:

(Start: 30 @134515 has 35 MA's), (Start: 31 @134521 has 170 MA's), (Start: 42 @134554 has 11 MA's), (52, 134701), (53, 134710), (56, 134737), (57, 134740), (65, 134779), (89, 134923), (101, 135007), (110, 135082), (114, 135103), (116, 135133), (124, 135190), (130, 135214), (134, 135226),

Gene: BackyardAgain_238 Start: 131894, Stop: 132610, Start Num: 31

Candidate Starts for BackyardAgain_238:

(Start: 30 @131888 has 35 MA's), (Start: 31 @131894 has 170 MA's), (Start: 42 @131927 has 11 MA's), (52, 132074), (53, 132083), (56, 132110), (57, 132113), (65, 132152), (89, 132296), (101, 132380), (110, 132455), (114, 132476), (116, 132506), (124, 132563), (130, 132587), (134, 132599),

Gene: BadAgartude_237 Start: 133846, Stop: 134562, Start Num: 31

Candidate Starts for BadAgartude_237:

(Start: 30 @133840 has 35 MA's), (Start: 31 @133846 has 170 MA's), (Start: 42 @133879 has 11 MA's), (52, 134026), (53, 134035), (56, 134062), (57, 134065), (65, 134104), (89, 134248), (101, 134332), (110, 134407), (114, 134428), (116, 134458), (124, 134515), (130, 134539), (134, 134551),

Gene: Bagrid_18 Start: 12470, Stop: 13171, Start Num: 30

Candidate Starts for Bagrid_18:

(18, 12404), (Start: 30 @12470 has 35 MA's), (47, 12575), (50, 12584), (55, 12650), (73, 12755), (75, 12773), (76, 12779), (94, 12878), (97, 12887), (103, 12962), (112, 13004), (135, 13148),

Gene: BananaFence_240 Start: 133977, Stop: 134693, Start Num: 31

Candidate Starts for BananaFence_240:

(Start: 30 @133971 has 35 MA's), (Start: 31 @133977 has 170 MA's), (Start: 42 @134010 has 11 MA's), (52, 134157), (53, 134166), (56, 134193), (57, 134196), (65, 134235), (89, 134379), (101, 134463), (110, 134538), (114, 134559), (116, 134589), (124, 134646), (130, 134670), (134, 134682),

Gene: Bangla1971_244 Start: 134453, Stop: 135169, Start Num: 31

Candidate Starts for Bangla1971_244:

(Start: 30 @134447 has 35 MA's), (Start: 31 @134453 has 170 MA's), (Start: 42 @134486 has 11 MA's), (52, 134633), (53, 134642), (56, 134669), (57, 134672), (65, 134711), (89, 134855), (101, 134939), (110, 135014), (114, 135035), (116, 135065), (124, 135122), (130, 135146), (134, 135158),

Gene: Basquiat_240 Start: 132263, Stop: 132979, Start Num: 31

Candidate Starts for Basquiat_240:

(Start: 30 @132257 has 35 MA's), (Start: 31 @132263 has 170 MA's), (Start: 42 @132296 has 11 MA's), (52, 132443), (53, 132452), (56, 132479), (57, 132482), (65, 132521), (89, 132665), (101, 132749), (110, 132824), (114, 132845), (116, 132875), (124, 132932), (130, 132956), (134, 132968),

Gene: BeanWater_236 Start: 133590, Stop: 134306, Start Num: 31

Candidate Starts for BeanWater_236:

(Start: 30 @133584 has 35 MA's), (Start: 31 @133590 has 170 MA's), (Start: 42 @133623 has 11 MA's), (52, 133770), (53, 133779), (56, 133806), (57, 133809), (65, 133848), (89, 133992), (101, 134076), (110, 134151), (114, 134172), (116, 134202), (124, 134259), (130, 134283), (134, 134295),

Gene: Beelzebub_91 Start: 46647, Stop: 47375, Start Num: 29

Candidate Starts for Beelzebub_91:

(Start: 29 @46647 has 19 MA's), (Start: 41 @46662 has 2 MA's), (43, 46707), (48, 46758), (49, 46761), (52, 46824), (56, 46860), (60, 46884), (63, 46899), (67, 46926), (72, 46950), (84, 47025), (90, 47037), (91, 47046), (96, 47079), (103, 47157), (108, 47175), (112, 47199), (136, 47361),

Gene: Beem_20 Start: 13036, Stop: 13737, Start Num: 30

Candidate Starts for Beem_20:

(18, 12970), (Start: 30 @13036 has 35 MA's), (47, 13141), (50, 13150), (55, 13216), (71, 13315), (73, 13321), (75, 13339), (76, 13345), (94, 13444), (97, 13453), (103, 13528), (112, 13570), (135, 13714),

Gene: Belieber_235 Start: 132390, Stop: 133106, Start Num: 31

Candidate Starts for Belieber_235:

(Start: 30 @132384 has 35 MA's), (Start: 31 @132390 has 170 MA's), (Start: 42 @132423 has 11 MA's), (52, 132570), (53, 132579), (56, 132606), (57, 132609), (65, 132648), (89, 132792), (101, 132876), (110, 132951), (114, 132972), (116, 133002), (124, 133059), (130, 133083), (134, 133095),

Gene: Bezza_231 Start: 133289, Stop: 134005, Start Num: 31

Candidate Starts for Bezza_231:

(Start: 30 @133283 has 35 MA's), (Start: 31 @133289 has 170 MA's), (Start: 42 @133322 has 11 MA's), (52, 133469), (53, 133478), (56, 133505), (57, 133508), (65, 133547), (89, 133691), (101, 133775), (110, 133850), (114, 133871), (116, 133901), (124, 133958), (130, 133982), (134, 133994),

Gene: BigCity_251 Start: 136350, Stop: 137066, Start Num: 31

Candidate Starts for BigCity_251:

(Start: 30 @136344 has 35 MA's), (Start: 31 @136350 has 170 MA's), (Start: 42 @136383 has 11 MA's), (52, 136530), (53, 136539), (56, 136566), (57, 136569), (65, 136608), (89, 136752), (101, 136836), (110, 136911), (114, 136932), (116, 136962), (124, 137019), (130, 137043), (133, 137052),

(134, 137055),

Gene: Bigswole_248 Start: 136324, Stop: 137040, Start Num: 31

Candidate Starts for Bigswole_248:

(Start: 30 @136318 has 35 MA's), (Start: 31 @136324 has 170 MA's), (Start: 42 @136357 has 11 MA's), (52, 136504), (53, 136513), (56, 136540), (57, 136543), (65, 136582), (89, 136726), (101, 136810), (110, 136885), (114, 136906), (116, 136936), (124, 136993), (130, 137017), (134, 137029),

Gene: Bipolarisk_241 Start: 134472, Stop: 135188, Start Num: 31

Candidate Starts for Bipolarisk_241:

(Start: 30 @134466 has 35 MA's), (Start: 31 @134472 has 170 MA's), (Start: 42 @134505 has 11 MA's), (52, 134652), (53, 134661), (56, 134688), (57, 134691), (65, 134730), (89, 134874), (101, 134958), (110, 135033), (114, 135054), (116, 135084), (124, 135141), (130, 135165), (134, 135177),

Gene: Blackbeetle_87 Start: 46008, Stop: 46736, Start Num: 29

Candidate Starts for Blackbeetle_87:

(Start: 29 @46008 has 19 MA's), (Start: 41 @46023 has 2 MA's), (43, 46068), (48, 46119), (49, 46122), (52, 46185), (56, 46221), (60, 46245), (63, 46260), (67, 46287), (72, 46311), (90, 46398), (91, 46407), (96, 46440), (103, 46518), (108, 46536), (112, 46560), (136, 46722),

Gene: Blackbrain_241 Start: 134040, Stop: 134756, Start Num: 31

Candidate Starts for Blackbrain_241:

(Start: 30 @134034 has 35 MA's), (Start: 31 @134040 has 170 MA's), (Start: 42 @134073 has 11 MA's), (52, 134220), (53, 134229), (56, 134256), (57, 134259), (65, 134298), (89, 134442), (101, 134526), (110, 134601), (114, 134622), (116, 134652), (124, 134709), (130, 134733), (134, 134745),

Gene: Blackdragon_238 Start: 134077, Stop: 134793, Start Num: 31

Candidate Starts for Blackdragon_238:

(Start: 30 @134071 has 35 MA's), (Start: 31 @134077 has 170 MA's), (Start: 42 @134110 has 11 MA's), (52, 134257), (53, 134266), (56, 134293), (57, 134296), (65, 134335), (89, 134479), (101, 134563), (110, 134638), (114, 134659), (116, 134689), (124, 134746), (130, 134770), (134, 134782),

Gene: Blarby_108 Start: 53883, Stop: 54581, Start Num: 28

Candidate Starts for Blarby_108:

(17, 53811), (20, 53835), (Start: 23 @53865 has 1 MA's), (Start: 28 @53883 has 19 MA's), (50, 54000), (58, 54087), (69, 54150), (71, 54165), (72, 54168), (73, 54171), (75, 54189), (80, 54219), (103, 54378),

Gene: Blessica_36 Start: 18071, Stop: 18763, Start Num: 37

Candidate Starts for Blessica_36:

(6, 17600), (12, 17765), (14, 17846), (15, 17864), (21, 17993), (Start: 37 @18071 has 38 MA's), (47, 18176), (56, 18266), (67, 18329), (71, 18350), (72, 18353), (75, 18374), (79, 18398), (103, 18563), (108, 18581), (112, 18605), (123, 18704),

Gene: Blexus_99 Start: 56032, Stop: 56730, Start Num: 28

Candidate Starts for Blexus_99:

(Start: 23 @56014 has 1 MA's), (Start: 28 @56032 has 19 MA's), (58, 56236), (71, 56314), (72, 56317), (73, 56320), (75, 56338), (97, 56452), (103, 56527),

Gene: Blubba_230 Start: 137316, Stop: 137999, Start Num: 42

Candidate Starts for Blubba_230:

(Start: 30 @137277 has 35 MA's), (Start: 31 @137283 has 170 MA's), (Start: 42 @137316 has 11 MA's), (52, 137463), (53, 137472), (56, 137499), (57, 137502), (65, 137541), (89, 137685), (101, 137769), (110, 137844), (114, 137865), (116, 137895), (124, 137952), (130, 137976), (134, 137988),

Gene: Bluvara_75 Start: 48333, Stop: 49031, Start Num: 32

Candidate Starts for Bluvara_75:

(Start: 32 @48333 has 1 MA's), (44, 48405), (46, 48414), (56, 48528), (60, 48552), (80, 48666), (92, 48714), (103, 48825),

Gene: BobaPhatt_234 Start: 133191, Stop: 133874, Start Num: 42

Candidate Starts for BobaPhatt_234:

(Start: 30 @133152 has 35 MA's), (Start: 31 @133158 has 170 MA's), (Start: 42 @133191 has 11 MA's), (52, 133338), (53, 133347), (56, 133374), (57, 133377), (65, 133416), (89, 133560), (101, 133644), (110, 133719), (114, 133740), (116, 133770), (124, 133827), (130, 133851), (134, 133863),

Gene: Bobby_21 Start: 12989, Stop: 13690, Start Num: 30

Candidate Starts for Bobby_21:

(18, 12923), (Start: 30 @12989 has 35 MA's), (47, 13094), (50, 13103), (55, 13169), (71, 13268), (73, 13274), (75, 13292), (76, 13298), (94, 13397), (97, 13406), (103, 13481), (112, 13523), (135, 13667),

Gene: Bombitas_17 Start: 12345, Stop: 13046, Start Num: 30

Candidate Starts for Bombitas_17:

(18, 12279), (Start: 30 @12345 has 35 MA's), (47, 12450), (50, 12459), (55, 12525), (71, 12624), (73, 12630), (75, 12648), (76, 12654), (94, 12753), (97, 12762), (103, 12837), (112, 12879), (135, 13023),

Gene: Bonray_245 Start: 135840, Stop: 136556, Start Num: 31

Candidate Starts for Bonray_245:

(Start: 30 @135834 has 35 MA's), (Start: 31 @135840 has 170 MA's), (Start: 42 @135873 has 11 MA's), (52, 136020), (53, 136029), (56, 136056), (57, 136059), (65, 136098), (89, 136242), (101, 136326), (110, 136401), (114, 136422), (116, 136452), (124, 136509), (130, 136533), (134, 136545),

Gene: Bora_32 Start: 17133, Stop: 17825, Start Num: 37

Candidate Starts for Bora_32:

(12, 16827), (14, 16908), (15, 16926), (21, 17055), (Start: 37 @17133 has 38 MA's), (47, 17238), (56, 17328), (67, 17391), (71, 17412), (72, 17415), (75, 17436), (79, 17460), (103, 17625), (108, 17643), (112, 17667),

Gene: Bowman_240 Start: 134955, Stop: 135671, Start Num: 31

Candidate Starts for Bowman_240:

(Start: 30 @134949 has 35 MA's), (Start: 31 @134955 has 170 MA's), (Start: 42 @134988 has 11 MA's), (52, 135135), (53, 135144), (56, 135171), (57, 135174), (65, 135213), (89, 135357), (101, 135441), (110, 135516), (114, 135537), (116, 135567), (124, 135624), (130, 135648), (134, 135660),

Gene: Bread_239 Start: 133847, Stop: 134563, Start Num: 31

Candidate Starts for Bread_239:

(Start: 30 @133841 has 35 MA's), (Start: 31 @133847 has 170 MA's), (Start: 42 @133880 has 11 MA's), (52, 134027), (53, 134036), (56, 134063), (57, 134066), (65, 134105), (89, 134249), (101, 134333), (110, 134408), (114, 134429), (116, 134459), (124, 134516), (130, 134540), (134, 134552),

Gene: Breeniome_243 Start: 133313, Stop: 134029, Start Num: 31

Candidate Starts for Breeniome_243:

(Start: 30 @133307 has 35 MA's), (Start: 31 @133313 has 170 MA's), (Start: 42 @133346 has 11 MA's), (52, 133493), (53, 133502), (56, 133529), (57, 133532), (65, 133571), (89, 133715), (101, 133799), (110, 133874), (114, 133895), (116, 133925), (124, 133982), (130, 134006), (134, 134018),

Gene: Brujita_73 Start: 45931, Stop: 46629, Start Num: 37

Candidate Starts for Brujita_73:

(Start: 37 @45931 has 38 MA's), (44, 46003), (46, 46012), (56, 46126), (60, 46150), (80, 46264), (92, 46312), (103, 46423),

Gene: Burrough_244 Start: 135617, Stop: 136333, Start Num: 31

Candidate Starts for Burrough_244:

(Start: 30 @135611 has 35 MA's), (Start: 31 @135617 has 170 MA's), (Start: 42 @135650 has 11 MA's), (52, 135797), (53, 135806), (56, 135833), (57, 135836), (65, 135875), (89, 136019), (101, 136103), (110, 136178), (114, 136199), (116, 136229), (124, 136286), (130, 136310), (134, 136322),

Gene: Bxz1_229 Start: 135855, Stop: 136538, Start Num: 42

Candidate Starts for Bxz1_229:

(Start: 30 @135816 has 35 MA's), (Start: 31 @135822 has 170 MA's), (Start: 42 @135855 has 11 MA's), (52, 136002), (53, 136011), (56, 136038), (57, 136041), (65, 136080), (89, 136224), (101, 136308), (110, 136383), (114, 136404), (116, 136434), (124, 136491), (130, 136515), (134, 136527),

Gene: Cactojaque_237 Start: 133019, Stop: 133702, Start Num: 42

Candidate Starts for Cactojaque_237:

(Start: 30 @132980 has 35 MA's), (Start: 31 @132986 has 170 MA's), (Start: 42 @133019 has 11 MA's), (52, 133166), (53, 133175), (56, 133202), (57, 133205), (65, 133244), (89, 133388), (101, 133472), (110, 133547), (114, 133568), (116, 133598), (124, 133655), (130, 133679), (134, 133691),

Gene: Cali_233 Start: 134215, Stop: 134931, Start Num: 31

Candidate Starts for Cali_233:

(Start: 30 @134209 has 35 MA's), (Start: 31 @134215 has 170 MA's), (Start: 42 @134248 has 11 MA's), (52, 134395), (53, 134404), (56, 134431), (57, 134434), (65, 134473), (89, 134617), (101, 134701), (110, 134776), (114, 134797), (116, 134827), (124, 134884), (130, 134908), (134, 134920),

Gene: Cane17_232 Start: 137692, Stop: 138408, Start Num: 31

Candidate Starts for Cane17_232:

(Start: 30 @137686 has 35 MA's), (Start: 31 @137692 has 170 MA's), (Start: 42 @137725 has 11 MA's), (52, 137872), (53, 137881), (56, 137908), (57, 137911), (65, 137950), (89, 138094), (101, 138178), (110, 138253), (114, 138274), (116, 138304), (124, 138361), (130, 138385), (134, 138397),

Gene: Capablanca_248 Start: 136468, Stop: 137184, Start Num: 31

Candidate Starts for Capablanca_248:

(Start: 30 @136462 has 35 MA's), (Start: 31 @136468 has 170 MA's), (Start: 42 @136501 has 11 MA's), (52, 136648), (53, 136657), (56, 136684), (57, 136687), (65, 136726), (89, 136870), (101, 136954), (110, 137029), (114, 137050), (116, 137080), (124, 137137), (130, 137161), (134, 137173),

Gene: Caprice_79 Start: 45946, Stop: 46674, Start Num: 29

Candidate Starts for Caprice_79:

(Start: 29 @45946 has 19 MA's), (Start: 41 @45961 has 2 MA's), (43, 46006), (48, 46057), (49, 46060), (52, 46123), (56, 46159), (60, 46183), (63, 46198), (67, 46225), (72, 46249), (90, 46336), (91, 46345), (96, 46378), (103, 46456), (108, 46474), (112, 46498), (136, 46660),

Gene: Caravan_233 Start: 134555, Stop: 135271, Start Num: 31

Candidate Starts for Caravan_233:

(Start: 30 @134549 has 35 MA's), (Start: 31 @134555 has 170 MA's), (Start: 42 @134588 has 11 MA's), (52, 134735), (53, 134744), (56, 134771), (57, 134774), (65, 134813), (89, 134957), (101, 135041), (110, 135116), (114, 135137), (116, 135167), (124, 135224), (130, 135248), (134, 135260),

Gene: Catdawg_35 Start: 17760, Stop: 18452, Start Num: 37

Candidate Starts for Catdawg_35:

(6, 17289), (12, 17454), (14, 17535), (15, 17553), (21, 17682), (Start: 37 @17760 has 38 MA's), (47, 17865), (56, 17955), (67, 18018), (71, 18039), (72, 18042), (75, 18063), (79, 18087), (103, 18252), (108, 18270), (112, 18294), (123, 18393),

Gene: Catera_232 Start: 132990, Stop: 133673, Start Num: 42

Candidate Starts for Catera_232:

(Start: 30 @132951 has 35 MA's), (Start: 31 @132957 has 170 MA's), (Start: 42 @132990 has 11 MA's), (52, 133137), (53, 133146), (56, 133173), (57, 133176), (65, 133215), (89, 133359), (101, 133443), (110, 133518), (114, 133539), (116, 133569), (124, 133626), (130, 133650), (134, 133662),

Gene: Chargie21_240 Start: 132263, Stop: 132979, Start Num: 31

Candidate Starts for Chargie21_240:

(Start: 30 @132257 has 35 MA's), (Start: 31 @132263 has 170 MA's), (Start: 42 @132296 has 11 MA's), (52, 132443), (53, 132452), (56, 132479), (57, 132482), (65, 132521), (89, 132665), (101, 132749), (110, 132824), (114, 132845), (116, 132875), (124, 132932), (130, 132956), (134, 132968),

Gene: CharlieB_238 Start: 133981, Stop: 134697, Start Num: 31

Candidate Starts for CharlieB_238:

(Start: 30 @133975 has 35 MA's), (Start: 31 @133981 has 170 MA's), (Start: 42 @134014 has 11 MA's), (52, 134161), (53, 134170), (56, 134197), (57, 134200), (65, 134239), (89, 134383), (101, 134467), (110, 134542), (114, 134563), (116, 134593), (124, 134650), (130, 134674), (134, 134686),

Gene: ChaylaJr_242 Start: 133654, Stop: 134370, Start Num: 31

Candidate Starts for ChaylaJr_242:

(Start: 30 @133648 has 35 MA's), (Start: 31 @133654 has 170 MA's), (Start: 42 @133687 has 11 MA's), (52, 133834), (53, 133843), (56, 133870), (57, 133873), (65, 133912), (89, 134056), (101, 134140), (110, 134215), (114, 134236), (116, 134266), (124, 134323), (130, 134347), (134, 134359),

Gene: Che8_109 Start: 57343, Stop: 58041, Start Num: 28

Candidate Starts for Che8_109:

(Start: 23 @57325 has 1 MA's), (Start: 28 @57343 has 19 MA's), (50, 57460), (58, 57547), (71, 57625), (72, 57628), (73, 57631), (75, 57649), (97, 57763), (103, 57838),

Gene: Che9d_110 Start: 54871, Stop: 55566, Start Num: 28

Candidate Starts for Che9d_110:

(17, 54799), (20, 54823), (Start: 23 @54853 has 1 MA's), (Start: 28 @54871 has 19 MA's), (50, 54988), (58, 55075), (69, 55138), (71, 55153), (72, 55156), (73, 55159), (75, 55177), (80, 55207), (103, 55366),

Gene: ChickenPhender_239 Start: 132410, Stop: 133126, Start Num: 31

Candidate Starts for ChickenPhender_239:

(Start: 30 @132404 has 35 MA's), (Start: 31 @132410 has 170 MA's), (Start: 42 @132443 has 11 MA's), (52, 132590), (53, 132599), (56, 132626), (57, 132629), (65, 132668), (89, 132812), (101, 132896), (110, 132971), (114, 132992), (116, 133022), (124, 133079), (130, 133103), (134, 133115),

Gene: Chomp_242 Start: 135846, Stop: 136562, Start Num: 31

Candidate Starts for Chomp_242:

(Start: 30 @135840 has 35 MA's), (Start: 31 @135846 has 170 MA's), (Start: 42 @135879 has 11 MA's), (52, 136026), (53, 136035), (56, 136062), (57, 136065), (65, 136104), (89, 136248), (101, 136332), (110, 136407), (114, 136428), (116, 136458), (124, 136515), (130, 136539), (134, 136551),

Gene: CindyLou_244 Start: 136106, Stop: 136822, Start Num: 31

Candidate Starts for CindyLou_244:

(Start: 30 @136100 has 35 MA's), (Start: 31 @136106 has 170 MA's), (Start: 42 @136139 has 11 MA's), (52, 136286), (53, 136295), (56, 136322), (57, 136325), (65, 136364), (89, 136508), (101, 136592), (110, 136667), (114, 136688), (116, 136718), (124, 136775), (130, 136799), (134, 136811),

Gene: Clarkson_88 Start: 46327, Stop: 47055, Start Num: 29

Candidate Starts for Clarkson_88:

(Start: 29 @46327 has 19 MA's), (Start: 41 @46342 has 2 MA's), (43, 46387), (48, 46438), (49, 46441), (52, 46504), (56, 46540), (60, 46564), (63, 46579), (67, 46606), (72, 46630), (90, 46717), (91, 46726), (96, 46759), (103, 46837), (108, 46855), (112, 46879), (136, 47041),

Gene: Cleatunium_235 Start: 133667, Stop: 134383, Start Num: 31

Candidate Starts for Cleatunium_235:

(Start: 30 @133661 has 35 MA's), (Start: 31 @133667 has 170 MA's), (Start: 42 @133700 has 11 MA's), (52, 133847), (53, 133856), (56, 133883), (57, 133886), (65, 133925), (89, 134069), (101, 134153), (110, 134228), (114, 134249), (116, 134279), (124, 134336), (130, 134360), (134, 134372),

Gene: Colt_233 Start: 136923, Stop: 137639, Start Num: 31

Candidate Starts for Colt_233:

(Start: 30 @136917 has 35 MA's), (Start: 31 @136923 has 170 MA's), (Start: 42 @136956 has 11 MA's), (52, 137103), (53, 137112), (56, 137139), (57, 137142), (65, 137181), (89, 137325), (101, 137409), (110, 137484), (114, 137505), (116, 137535), (124, 137592), (130, 137616), (134, 137628),

Gene: Concombres_248 Start: 136002, Stop: 136718, Start Num: 31

Candidate Starts for Concombres_248:

(Start: 30 @135996 has 35 MA's), (Start: 31 @136002 has 170 MA's), (Start: 42 @136035 has 11 MA's), (52, 136182), (53, 136191), (56, 136218), (57, 136221), (65, 136260), (89, 136404), (101, 136488), (110, 136563), (114, 136584), (116, 136614), (124, 136671), (130, 136695), (134, 136707),

Gene: Constella_15 Start: 11859, Stop: 12560, Start Num: 30

Candidate Starts for Constella_15:

(18, 11793), (Start: 30 @11859 has 35 MA's), (47, 11964), (50, 11973), (55, 12039), (71, 12138), (73, 12144), (75, 12162), (76, 12168), (94, 12267), (97, 12276), (103, 12351), (112, 12393), (135, 12537),

Gene: Corazon_82 Start: 46521, Stop: 47249, Start Num: 29

Candidate Starts for Corazon_82:

(Start: 29 @46521 has 19 MA's), (Start: 41 @46536 has 2 MA's), (43, 46581), (48, 46632), (49, 46635), (52, 46698), (56, 46734), (60, 46758), (63, 46773), (67, 46800), (72, 46824), (90, 46911), (91, 46920), (96, 46953), (103, 47031), (108, 47049), (112, 47073), (136, 47235),

Gene: Corndog_37 Start: 18218, Stop: 18910, Start Num: 37

Candidate Starts for Corndog_37:

(12, 17912), (14, 17993), (15, 18011), (21, 18140), (Start: 37 @18218 has 38 MA's), (47, 18323), (56, 18413), (67, 18476), (71, 18497), (72, 18500), (75, 18521), (79, 18545), (103, 18710), (108, 18728), (112, 18752),

Gene: Cornie_100 Start: 55310, Stop: 56005, Start Num: 37

Candidate Starts for Cornie_100:

(2, 54668), (3, 54695), (8, 54899), (10, 54968), (13, 55064), (Start: 37 @55310 has 38 MA's), (49, 55421), (60, 55529), (103, 55799),

Gene: Courthouse_17 Start: 10999, Stop: 11700, Start Num: 30

Candidate Starts for Courthouse_17:

(16, 10864), (Start: 30 @10999 has 35 MA's), (55, 11179), (75, 11302), (80, 11332), (103, 11491), (115, 11563), (125, 11638), (138, 11692),

Gene: DTDevon_244 Start: 136485, Stop: 137201, Start Num: 31

Candidate Starts for DTDevon_244:

(Start: 30 @136479 has 35 MA's), (Start: 31 @136485 has 170 MA's), (Start: 42 @136518 has 11 MA's), (52, 136665), (53, 136674), (56, 136701), (57, 136704), (65, 136743), (89, 136887), (101, 136971), (110, 137046), (114, 137067), (116, 137097), (124, 137154), (130, 137178), (134, 137190),

Gene: Daffodil_249 Start: 134772, Stop: 135488, Start Num: 31

Candidate Starts for Daffodil_249:

(Start: 30 @134766 has 35 MA's), (Start: 31 @134772 has 170 MA's), (Start: 42 @134805 has 11 MA's), (52, 134952), (53, 134961), (56, 134988), (57, 134991), (65, 135030), (89, 135174), (101, 135258), (110, 135333), (114, 135354), (116, 135384), (124, 135441), (130, 135465), (134, 135477),

Gene: Dallas_19 Start: 12576, Stop: 13277, Start Num: 30

Candidate Starts for Dallas_19:

(18, 12510), (Start: 30 @12576 has 35 MA's), (47, 12681), (50, 12690), (55, 12756), (73, 12861), (75, 12879), (76, 12885), (94, 12984), (97, 12993), (103, 13068), (112, 13110), (135, 13254),

Gene: Dandelion_249 Start: 137375, Stop: 138091, Start Num: 31

Candidate Starts for Dandelion_249:

(Start: 30 @137369 has 35 MA's), (Start: 31 @137375 has 170 MA's), (Start: 42 @137408 has 11 MA's), (52, 137555), (53, 137564), (56, 137591), (57, 137594), (65, 137633), (89, 137777), (101, 137861), (110, 137936), (114, 137957), (116, 137987), (124, 138044), (130, 138068), (134, 138080),

Gene: Darko_242 Start: 133981, Stop: 134697, Start Num: 31

Candidate Starts for Darko_242:

(Start: 30 @133975 has 35 MA's), (Start: 31 @133981 has 170 MA's), (Start: 42 @134014 has 11 MA's), (52, 134161), (53, 134170), (56, 134197), (57, 134200), (65, 134239), (89, 134383), (101, 134467), (110, 134542), (114, 134563), (116, 134593), (124, 134650), (130, 134674), (134, 134686),

Gene: DeejaClivia_230 Start: 132288, Stop: 132998, Start Num: 31

Candidate Starts for DeejaClivia_230:

(Start: 31 @132288 has 170 MA's), (Start: 42 @132321 has 11 MA's), (52, 132468), (53, 132477), (56, 132504), (57, 132507), (64, 132543), (65, 132546), (86, 132687), (101, 132771), (110, 132846), (114, 132867), (116, 132897), (124, 132954), (130, 132978), (133, 132987),

Gene: Delilah_241 Start: 134865, Stop: 135581, Start Num: 31

Candidate Starts for Delilah_241:

(Start: 30 @134859 has 35 MA's), (Start: 31 @134865 has 170 MA's), (Start: 42 @134898 has 11 MA's), (52, 135045), (53, 135054), (56, 135081), (57, 135084), (65, 135123), (89, 135267), (101, 135351), (110, 135426), (114, 135447), (116, 135477), (124, 135534), (130, 135558), (134, 135570),

Gene: Delylah_245 Start: 135179, Stop: 135895, Start Num: 31

Candidate Starts for Delylah_245:

(Start: 30 @135173 has 35 MA's), (Start: 31 @135179 has 170 MA's), (Start: 42 @135212 has 11 MA's), (52, 135359), (53, 135368), (56, 135395), (57, 135398), (65, 135437), (89, 135581), (101, 135665), (110, 135740), (114, 135761), (116, 135791), (124, 135848), (130, 135872), (134, 135884),

Gene: Demodog_249 Start: 136012, Stop: 136728, Start Num: 31

Candidate Starts for Demodog_249:

(Start: 30 @136006 has 35 MA's), (Start: 31 @136012 has 170 MA's), (Start: 42 @136045 has 11 MA's), (52, 136192), (53, 136201), (56, 136228), (57, 136231), (65, 136270), (89, 136414), (101, 136498), (110, 136573), (114, 136594), (116, 136624), (124, 136681), (130, 136705), (134, 136717),

Gene: Demsculpinboyz_116 Start: 56032, Stop: 56727, Start Num: 28

Candidate Starts for Demsculpinboyz_116:

(17, 55960), (20, 55984), (Start: 23 @56014 has 1 MA's), (Start: 28 @56032 has 19 MA's), (58, 56236), (69, 56299), (71, 56314), (72, 56317), (73, 56320), (75, 56338), (80, 56368), (103, 56527),

Gene: Derek_239 Start: 135123, Stop: 135839, Start Num: 31

Candidate Starts for Derek_239:

(Start: 30 @135117 has 35 MA's), (Start: 31 @135123 has 170 MA's), (Start: 42 @135156 has 11 MA's), (52, 135303), (53, 135312), (56, 135339), (57, 135342), (65, 135381), (89, 135525), (101, 135609), (110, 135684), (114, 135705), (116, 135735), (124, 135792), (130, 135816), (134, 135828),

Gene: Dessert_240 Start: 134122, Stop: 134838, Start Num: 31

Candidate Starts for Dessert_240:

(Start: 30 @134116 has 35 MA's), (Start: 31 @134122 has 170 MA's), (Start: 42 @134155 has 11 MA's), (52, 134302), (53, 134311), (56, 134338), (57, 134341), (65, 134380), (89, 134524), (101, 134608), (110, 134683), (114, 134704), (116, 134734), (124, 134791), (130, 134815), (134, 134827),

Gene: Dietrick_232 Start: 133019, Stop: 133702, Start Num: 42

Candidate Starts for Dietrick_232:

(Start: 30 @132980 has 35 MA's), (Start: 31 @132986 has 170 MA's), (Start: 42 @133019 has 11 MA's), (52, 133166), (53, 133175), (56, 133202), (57, 133205), (65, 133244), (89, 133388), (101, 133472), (110, 133547), (114, 133568), (116, 133598), (124, 133655), (130, 133679), (134, 133691),

Gene: DirtMonster_232 Start: 133794, Stop: 134504, Start Num: 31

Candidate Starts for DirtMonster_232:

(Start: 31 @133794 has 170 MA's), (Start: 42 @133827 has 11 MA's), (52, 133974), (53, 133983), (56, 134010), (57, 134013), (64, 134049), (65, 134052), (86, 134193), (101, 134277), (110, 134352), (114, 134373), (116, 134403), (124, 134460), (130, 134484), (133, 134493),

Gene: DmpstrDiver_19 Start: 13216, Stop: 13917, Start Num: 30

Candidate Starts for DmpstrDiver_19:

(18, 13150), (Start: 30 @13216 has 35 MA's), (47, 13321), (50, 13330), (55, 13396), (73, 13501), (75, 13519), (76, 13525), (94, 13624), (97, 13633), (103, 13708), (112, 13750), (135, 13894),

Gene: DoRead_104 Start: 54064, Stop: 54762, Start Num: 28

Candidate Starts for DoRead_104:

(Start: 23 @54046 has 1 MA's), (Start: 28 @54064 has 19 MA's), (58, 54268), (71, 54346), (72, 54349), (73, 54352), (75, 54370), (97, 54484), (103, 54559),

Gene: Dodo_175 Start: 99062, Stop: 99763, Start Num: 34

Candidate Starts for Dodo_175:

(Start: 32 @99059 has 1 MA's), (Start: 34 @99062 has 3 MA's), (49, 99167), (63, 99293), (72, 99344), (75, 99365), (91, 99440), (99, 99488), (104, 99554), (107, 99563), (109, 99572), (117, 99641), (131, 99734),

Gene: Domi_237 Start: 134325, Stop: 135041, Start Num: 31

Candidate Starts for Domi_237:

(Start: 30 @134319 has 35 MA's), (Start: 31 @134325 has 170 MA's), (Start: 42 @134358 has 11 MA's), (52, 134505), (53, 134514), (56, 134541), (57, 134544), (65, 134583), (89, 134727), (101,

134811), (110, 134886), (114, 134907), (116, 134937), (124, 134994), (130, 135018), (134, 135030),

Gene: Dove_17 Start: 12344, Stop: 13045, Start Num: 30

Candidate Starts for Dove_17:

(18, 12278), (Start: 30 @12344 has 35 MA's), (47, 12449), (50, 12458), (55, 12524), (71, 12623), (73, 12629), (75, 12647), (76, 12653), (94, 12752), (97, 12761), (103, 12836), (112, 12878), (135, 13022),

Gene: DrPhinkDaddy_240 Start: 135550, Stop: 136266, Start Num: 31

Candidate Starts for DrPhinkDaddy_240:

(Start: 30 @135544 has 35 MA's), (Start: 31 @135550 has 170 MA's), (Start: 42 @135583 has 11 MA's), (52, 135730), (53, 135739), (56, 135766), (57, 135769), (65, 135808), (89, 135952), (101, 136036), (110, 136111), (114, 136132), (116, 136162), (124, 136219), (130, 136243), (134, 136255),

Gene: Drazdys_240 Start: 135163, Stop: 135846, Start Num: 42

Candidate Starts for Drazdys_240:

(Start: 30 @135124 has 35 MA's), (Start: 31 @135130 has 170 MA's), (Start: 42 @135163 has 11 MA's), (52, 135310), (53, 135319), (56, 135346), (57, 135349), (65, 135388), (89, 135532), (101, 135616), (110, 135691), (114, 135712), (116, 135742), (124, 135799), (130, 135823), (134, 135835),

Gene: Duckfeet_237 Start: 133938, Stop: 134654, Start Num: 31

Candidate Starts for Duckfeet_237:

(Start: 30 @133932 has 35 MA's), (Start: 31 @133938 has 170 MA's), (Start: 42 @133971 has 11 MA's), (52, 134118), (53, 134127), (56, 134154), (57, 134157), (65, 134196), (89, 134340), (101, 134424), (110, 134499), (114, 134520), (116, 134550), (124, 134607), (130, 134631), (134, 134643),

Gene: Duke13_16 Start: 12606, Stop: 13307, Start Num: 30

Candidate Starts for Duke13_16:

(18, 12540), (Start: 30 @12606 has 35 MA's), (47, 12711), (50, 12720), (55, 12786), (71, 12885), (73, 12891), (75, 12909), (76, 12915), (94, 13014), (97, 13023), (103, 13098), (112, 13140), (135, 13284),

Gene: Dylan_34 Start: 17485, Stop: 18177, Start Num: 37

Candidate Starts for Dylan_34:

(12, 17179), (14, 17260), (15, 17278), (21, 17407), (Start: 37 @17485 has 38 MA's), (47, 17590), (56, 17680), (61, 17707), (67, 17743), (71, 17764), (72, 17767), (75, 17788), (79, 17812), (103, 17977), (108, 17995), (112, 18019), (123, 18118),

Gene: ET08_229 Start: 133474, Stop: 134181, Start Num: 31

Candidate Starts for ET08_229:

(Start: 30 @133468 has 35 MA's), (Start: 31 @133474 has 170 MA's), (Start: 42 @133507 has 11 MA's), (52, 133654), (53, 133663), (56, 133690), (57, 133693), (65, 133732), (89, 133867), (101, 133951), (110, 134026), (114, 134047), (116, 134077), (124, 134134), (130, 134158), (134, 134170),

Gene: EasyJones_244 Start: 133506, Stop: 134222, Start Num: 31

Candidate Starts for EasyJones_244:

(Start: 30 @133500 has 35 MA's), (Start: 31 @133506 has 170 MA's), (Start: 42 @133539 has 11 MA's), (52, 133686), (53, 133695), (56, 133722), (57, 133725), (65, 133764), (89, 133908), (101, 133992), (110, 134067), (114, 134088), (116, 134118), (124, 134175), (130, 134199), (134, 134211),

Gene: EggyFarm_251 Start: 136351, Stop: 137067, Start Num: 31

Candidate Starts for EggyFarm_251:

(Start: 30 @136345 has 35 MA's), (Start: 31 @136351 has 170 MA's), (Start: 42 @136384 has 11 MA's), (52, 136531), (53, 136540), (56, 136567), (57, 136570), (65, 136609), (89, 136753), (101, 136837), (110, 136912), (114, 136933), (116, 136963), (124, 137020), (130, 137044), (133, 137053),

(134, 137056),

Gene: EhyElimayoE_73 Start: 54211, Stop: 53504, Start Num: 38

Candidate Starts for EhyElimayoE_73:

(Start: 38 @54211 has 9 MA's), (45, 54142), (49, 54106), (56, 54025), (58, 54019), (68, 53965), (73, 53941), (74, 53926), (76, 53917), (81, 53881), (97, 53800), (98, 53797), (100, 53785), (105, 53719), (109, 53704), (121, 53593), (137, 53509),

Gene: Ejimix_21 Start: 13786, Stop: 14487, Start Num: 30

Candidate Starts for Ejimix_21:

(18, 13720), (Start: 30 @13786 has 35 MA's), (47, 13891), (50, 13900), (55, 13966), (73, 14071), (75, 14089), (76, 14095), (94, 14194), (97, 14203), (103, 14278), (112, 14320), (135, 14464),

Gene: EmToTheThree_243 Start: 134889, Stop: 135605, Start Num: 31

Candidate Starts for EmToTheThree_243:

(Start: 30 @134883 has 35 MA's), (Start: 31 @134889 has 170 MA's), (Start: 42 @134922 has 11 MA's), (52, 135069), (53, 135078), (56, 135105), (57, 135108), (65, 135147), (89, 135291), (101, 135375), (110, 135450), (114, 135471), (116, 135501), (124, 135558), (130, 135582), (134, 135594),

Gene: EmmaElysia_248 Start: 136001, Stop: 136717, Start Num: 31

Candidate Starts for EmmaElysia_248:

(Start: 30 @135995 has 35 MA's), (Start: 31 @136001 has 170 MA's), (Start: 42 @136034 has 11 MA's), (52, 136181), (53, 136190), (56, 136217), (57, 136220), (65, 136259), (89, 136403), (101, 136487), (110, 136562), (114, 136583), (116, 136613), (124, 136670), (130, 136694), (134, 136706),

Gene: Erdmann_244 Start: 134857, Stop: 135573, Start Num: 31

Candidate Starts for Erdmann_244:

(Start: 30 @134851 has 35 MA's), (Start: 31 @134857 has 170 MA's), (Start: 42 @134890 has 11 MA's), (52, 135037), (53, 135046), (56, 135073), (57, 135076), (65, 135115), (89, 135259), (101, 135343), (110, 135418), (114, 135439), (116, 135469), (124, 135526), (130, 135550), (134, 135562),

Gene: EricMillard_20 Start: 13326, Stop: 14027, Start Num: 30

Candidate Starts for EricMillard_20:

(18, 13260), (Start: 30 @13326 has 35 MA's), (47, 13431), (50, 13440), (55, 13506), (71, 13605), (73, 13611), (75, 13629), (76, 13635), (94, 13734), (97, 13743), (103, 13818), (112, 13860), (135, 14004),

Gene: ErnieJ_236 Start: 131685, Stop: 132401, Start Num: 31

Candidate Starts for ErnieJ_236:

(Start: 30 @131679 has 35 MA's), (Start: 31 @131685 has 170 MA's), (Start: 42 @131718 has 11 MA's), (52, 131865), (53, 131874), (56, 131901), (57, 131904), (65, 131943), (89, 132087), (101, 132171), (110, 132246), (114, 132267), (116, 132297), (124, 132354), (130, 132378), (134, 132390),

Gene: Essence_241 Start: 134342, Stop: 135058, Start Num: 31

Candidate Starts for Essence_241:

(Start: 30 @134336 has 35 MA's), (Start: 31 @134342 has 170 MA's), (Start: 42 @134375 has 11 MA's), (52, 134522), (53, 134531), (56, 134558), (57, 134561), (65, 134600), (89, 134744), (101, 134828), (110, 134903), (114, 134924), (116, 134954), (124, 135011), (130, 135035), (134, 135047),

Gene: Ewok_242 Start: 134800, Stop: 135516, Start Num: 31

Candidate Starts for Ewok_242:

(Start: 30 @134794 has 35 MA's), (Start: 31 @134800 has 170 MA's), (Start: 42 @134833 has 11 MA's), (52, 134980), (53, 134989), (56, 135016), (57, 135019), (65, 135058), (89, 135202), (101, 135286), (110, 135361), (114, 135382), (116, 135412), (124, 135469), (130, 135493), (134, 135505),

Gene: Familton_36 Start: 17764, Stop: 18456, Start Num: 37

Candidate Starts for Familton_36:

(6, 17293), (12, 17458), (14, 17539), (15, 17557), (21, 17686), (Start: 37 @17764 has 38 MA's), (47, 17869), (56, 17959), (67, 18022), (71, 18043), (72, 18046), (75, 18067), (79, 18091), (103, 18256), (108, 18274), (112, 18298), (123, 18397),

Gene: FeliMaine_87 Start: 46569, Stop: 47297, Start Num: 29

Candidate Starts for FeliMaine_87:

(Start: 29 @46569 has 19 MA's), (Start: 41 @46584 has 2 MA's), (43, 46629), (48, 46680), (49, 46683), (52, 46746), (56, 46782), (60, 46806), (63, 46821), (67, 46848), (72, 46872), (84, 46947), (90, 46959), (91, 46968), (96, 47001), (103, 47079), (108, 47097), (112, 47121), (136, 47283),

Gene: Firecracker_35 Start: 17383, Stop: 18075, Start Num: 37

Candidate Starts for Firecracker_35:

(12, 17077), (14, 17158), (15, 17176), (21, 17305), (Start: 37 @17383 has 38 MA's), (47, 17488), (56, 17578), (61, 17605), (67, 17641), (71, 17662), (72, 17665), (75, 17686), (79, 17710), (103, 17875), (108, 17893), (112, 17917),

Gene: Fixie_242 Start: 135122, Stop: 135838, Start Num: 31

Candidate Starts for Fixie_242:

(Start: 30 @135116 has 35 MA's), (Start: 31 @135122 has 170 MA's), (Start: 42 @135155 has 11 MA's), (52, 135302), (53, 135311), (56, 135338), (57, 135341), (65, 135380), (89, 135524), (101, 135608), (110, 135683), (114, 135704), (116, 135734), (124, 135791), (130, 135815), (134, 135827),

Gene: Flabslab_237 Start: 131491, Stop: 132201, Start Num: 31

Candidate Starts for Flabslab_237:

(Start: 31 @131491 has 170 MA's), (52, 131671), (53, 131680), (56, 131707), (57, 131710), (64, 131746), (65, 131749), (86, 131890), (101, 131974), (110, 132049), (119, 132121), (124, 132157), (130, 132181), (133, 132190),

Gene: Fludd_243 Start: 133218, Stop: 133934, Start Num: 31

Candidate Starts for Fludd_243:

(Start: 30 @133212 has 35 MA's), (Start: 31 @133218 has 170 MA's), (Start: 42 @133251 has 11 MA's), (52, 133398), (53, 133407), (56, 133434), (57, 133437), (65, 133476), (89, 133620), (101, 133704), (110, 133779), (114, 133800), (116, 133830), (124, 133887), (130, 133911), (134, 133923),

Gene: Fongie_243 Start: 134798, Stop: 135514, Start Num: 31

Candidate Starts for Fongie_243:

(Start: 30 @134792 has 35 MA's), (Start: 31 @134798 has 170 MA's), (Start: 42 @134831 has 11 MA's), (52, 134978), (53, 134987), (56, 135014), (57, 135017), (65, 135056), (89, 135200), (101, 135284), (110, 135359), (114, 135380), (116, 135410), (124, 135467), (130, 135491), (134, 135503),

Gene: FoulBall_35 Start: 17758, Stop: 18450, Start Num: 37

Candidate Starts for FoulBall_35:

(6, 17287), (12, 17452), (14, 17533), (15, 17551), (21, 17680), (Start: 37 @17758 has 38 MA's), (47, 17863), (56, 17953), (67, 18016), (71, 18037), (72, 18040), (75, 18061), (79, 18085), (103, 18250), (108, 18268), (112, 18292), (123, 18391),

Gene: FoxtrotP1_241 Start: 135443, Stop: 136159, Start Num: 31

Candidate Starts for FoxtrotP1_241:

(Start: 30 @135437 has 35 MA's), (Start: 31 @135443 has 170 MA's), (Start: 42 @135476 has 11 MA's), (52, 135623), (53, 135632), (56, 135659), (57, 135662), (65, 135701), (89, 135845), (101,

135929), (110, 136004), (114, 136025), (116, 136055), (124, 136112), (130, 136136), (134, 136148),

Gene: Frankenweenie_80 Start: 57903, Stop: 57196, Start Num: 38

Candidate Starts for Frankenweenie_80:

(Start: 38 @57903 has 9 MA's), (45, 57834), (57, 57714), (68, 57657), (74, 57618), (76, 57609), (77, 57600), (97, 57492), (105, 57411), (120, 57300), (137, 57201),

Gene: FrayBell_246 Start: 133418, Stop: 134134, Start Num: 31

Candidate Starts for FrayBell_246:

(Start: 30 @133412 has 35 MA's), (Start: 31 @133418 has 170 MA's), (Start: 42 @133451 has 11 MA's), (52, 133598), (53, 133607), (56, 133634), (57, 133637), (65, 133676), (89, 133820), (101, 133904), (110, 133979), (114, 134000), (116, 134030), (124, 134087), (130, 134111), (134, 134123),

Gene: FudgeTart_238 Start: 133947, Stop: 134663, Start Num: 31

Candidate Starts for FudgeTart_238:

(Start: 30 @133941 has 35 MA's), (Start: 31 @133947 has 170 MA's), (Start: 42 @133980 has 11 MA's), (52, 134127), (53, 134136), (56, 134163), (57, 134166), (65, 134205), (89, 134349), (101, 134433), (110, 134508), (114, 134529), (116, 134559), (124, 134616), (130, 134640), (134, 134652),

Gene: GMA2_22 Start: 20237, Stop: 20953, Start Num: 33

Candidate Starts for GMA2_22:

(22, 20183), (33, 20237), (45, 20315), (47, 20345), (49, 20351), (56, 20435), (60, 20459), (63, 20471), (92, 20621), (94, 20648), (97, 20657), (100, 20672), (103, 20732), (125, 20879), (132, 20909), (135, 20918),

Gene: Gabriel_246 Start: 133377, Stop: 134093, Start Num: 31

Candidate Starts for Gabriel_246:

(Start: 30 @133371 has 35 MA's), (Start: 31 @133377 has 170 MA's), (Start: 42 @133410 has 11 MA's), (52, 133557), (53, 133566), (56, 133593), (57, 133596), (65, 133635), (89, 133779), (101, 133863), (110, 133938), (114, 133959), (116, 133989), (124, 134046), (130, 134070), (134, 134082),

Gene: Gamgam_245 Start: 133734, Stop: 134450, Start Num: 31

Candidate Starts for Gamgam_245:

(Start: 30 @133728 has 35 MA's), (Start: 31 @133734 has 170 MA's), (Start: 42 @133767 has 11 MA's), (52, 133914), (53, 133923), (56, 133950), (57, 133953), (65, 133992), (89, 134136), (101, 134220), (110, 134295), (114, 134316), (116, 134346), (124, 134403), (130, 134427), (134, 134439),

Gene: Gattaca_84 Start: 46106, Stop: 46834, Start Num: 29

Candidate Starts for Gattaca_84:

(Start: 29 @46106 has 19 MA's), (Start: 41 @46121 has 2 MA's), (43, 46166), (48, 46217), (49, 46220), (52, 46283), (56, 46319), (60, 46343), (63, 46358), (67, 46385), (72, 46409), (90, 46496), (91, 46505), (96, 46538), (103, 46616), (108, 46634), (112, 46658), (136, 46820),

Gene: Ghost_243 Start: 134358, Stop: 135074, Start Num: 31

Candidate Starts for Ghost_243:

(Start: 30 @134352 has 35 MA's), (Start: 31 @134358 has 170 MA's), (Start: 42 @134391 has 11 MA's), (52, 134538), (53, 134547), (56, 134574), (57, 134577), (65, 134616), (89, 134760), (101, 134844), (110, 134919), (114, 134940), (116, 134970), (124, 135027), (130, 135051), (134, 135063),

Gene: Gizmo_248 Start: 136774, Stop: 137490, Start Num: 31

Candidate Starts for Gizmo_248:

(Start: 30 @136768 has 35 MA's), (Start: 31 @136774 has 170 MA's), (Start: 42 @136807 has 11 MA's), (52, 136954), (53, 136963), (56, 136990), (57, 136993), (65, 137032), (89, 137176), (101,

137260), (110, 137335), (114, 137356), (116, 137386), (124, 137443), (130, 137467), (134, 137479),

Gene: GlutenPhree_244 Start: 133745, Stop: 134461, Start Num: 31

Candidate Starts for GlutenPhree_244:

(Start: 30 @133739 has 35 MA's), (Start: 31 @133745 has 170 MA's), (Start: 42 @133778 has 11 MA's), (52, 133925), (53, 133934), (56, 133961), (57, 133964), (65, 134003), (89, 134147), (101, 134231), (110, 134306), (114, 134327), (116, 134357), (124, 134414), (130, 134438), (134, 134450),

Gene: GoongGoong_86 Start: 45911, Stop: 46639, Start Num: 29

Candidate Starts for GoongGoong_86:

(Start: 29 @45911 has 19 MA's), (Start: 41 @45926 has 2 MA's), (43, 45971), (48, 46022), (49, 46025), (52, 46088), (56, 46124), (60, 46148), (63, 46163), (67, 46190), (72, 46214), (90, 46301), (91, 46310), (96, 46343), (103, 46421), (108, 46439), (112, 46463), (136, 46625),

Gene: Grasshills_250 Start: 136350, Stop: 137066, Start Num: 31

Candidate Starts for Grasshills_250:

(Start: 30 @136344 has 35 MA's), (Start: 31 @136350 has 170 MA's), (Start: 42 @136383 has 11 MA's), (52, 136530), (53, 136539), (56, 136566), (57, 136569), (65, 136608), (89, 136752), (101, 136836), (110, 136911), (114, 136932), (116, 136962), (124, 137019), (130, 137043), (133, 137052), (134, 137055),

Gene: Greely_243 Start: 136991, Stop: 137698, Start Num: 27

Candidate Starts for Greely_243:

(Start: 27 @136991 has 1 MA's), (44, 137072), (54, 137174), (56, 137198), (60, 137222), (62, 137228), (70, 137273), (72, 137285), (73, 137288), (92, 137381), (97, 137417), (103, 137492), (113, 137543), (136, 137684),

Gene: Grungle_225 Start: 131692, Stop: 132408, Start Num: 31

Candidate Starts for Grungle_225:

(Start: 30 @131686 has 35 MA's), (Start: 31 @131692 has 170 MA's), (Start: 42 @131725 has 11 MA's), (52, 131872), (53, 131881), (56, 131908), (57, 131911), (65, 131950), (89, 132094), (101, 132178), (110, 132253), (114, 132274), (116, 132304), (124, 132361), (130, 132385), (134, 132397),

Gene: Guwapp_239 Start: 133192, Stop: 133908, Start Num: 31

Candidate Starts for Guwapp_239:

(Start: 30 @133186 has 35 MA's), (Start: 31 @133192 has 170 MA's), (Start: 42 @133225 has 11 MA's), (52, 133372), (53, 133381), (56, 133408), (57, 133411), (65, 133450), (89, 133594), (101, 133678), (110, 133753), (114, 133774), (116, 133804), (124, 133861), (130, 133885), (134, 133897),

Gene: HC_77 Start: 45180, Stop: 45878, Start Num: 37

Candidate Starts for HC_77:

(1, 44505), (7, 44757), (9, 44829), (Start: 32 @45177 has 1 MA's), (Start: 37 @45180 has 38 MA's), (44, 45252), (46, 45261), (56, 45375), (60, 45399), (80, 45513), (92, 45561), (103, 45672),

Gene: Halldule_235 Start: 132874, Stop: 133590, Start Num: 31

Candidate Starts for Halldule_235:

(Start: 30 @132868 has 35 MA's), (Start: 31 @132874 has 170 MA's), (Start: 42 @132907 has 11 MA's), (52, 133054), (53, 133063), (56, 133090), (57, 133093), (65, 133132), (89, 133276), (101, 133360), (110, 133435), (114, 133456), (116, 133486), (124, 133543), (130, 133567), (134, 133579),

Gene: Halley_20 Start: 13036, Stop: 13737, Start Num: 30

Candidate Starts for Halley_20:

(18, 12970), (Start: 30 @13036 has 35 MA's), (47, 13141), (50, 13150), (55, 13216), (73, 13321), (75, 13339), (76, 13345), (94, 13444), (97, 13453), (103, 13528), (112, 13570), (135, 13714),

Gene: Hannaconda_14 Start: 9679, Stop: 10380, Start Num: 30

Candidate Starts for Hannaconda_14:

(16, 9544), (Start: 30 @9679 has 35 MA's), (55, 9859), (75, 9982), (80, 10012), (103, 10171), (115, 10243), (125, 10318), (138, 10372),

Gene: Hidrated_20 Start: 13149, Stop: 13850, Start Num: 30

Candidate Starts for Hidrated_20:

(18, 13083), (Start: 30 @13149 has 35 MA's), (47, 13254), (50, 13263), (55, 13329), (73, 13434), (75, 13452), (76, 13458), (97, 13566), (103, 13641), (112, 13683), (135, 13827),

Gene: HokkenD_15 Start: 12609, Stop: 13310, Start Num: 30

Candidate Starts for HokkenD_15:

(18, 12543), (Start: 30 @12609 has 35 MA's), (47, 12714), (50, 12723), (55, 12789), (71, 12888), (73, 12894), (75, 12912), (76, 12918), (94, 13017), (97, 13026), (103, 13101), (112, 13143), (135, 13287),

Gene: Hughesyang_19 Start: 13216, Stop: 13917, Start Num: 30

Candidate Starts for Hughesyang_19:

(18, 13150), (Start: 30 @13216 has 35 MA's), (47, 13321), (50, 13330), (55, 13396), (71, 13495), (73, 13501), (75, 13519), (76, 13525), (94, 13624), (97, 13633), (103, 13708), (112, 13750), (135, 13894),

Gene: Huphlepuuff_89 Start: 46132, Stop: 46860, Start Num: 29

Candidate Starts for Huphlepuuff_89:

(Start: 29 @46132 has 19 MA's), (Start: 41 @46147 has 2 MA's), (43, 46192), (48, 46243), (49, 46246), (52, 46309), (56, 46345), (60, 46369), (63, 46384), (67, 46411), (72, 46435), (90, 46522), (91, 46531), (96, 46564), (103, 46642), (108, 46660), (112, 46684), (136, 46846),

Gene: HyRo_228 Start: 133953, Stop: 134663, Start Num: 31

Candidate Starts for HyRo_228:

(Start: 31 @133953 has 170 MA's), (52, 134133), (53, 134142), (56, 134169), (57, 134172), (64, 134208), (65, 134211), (86, 134352), (101, 134436), (110, 134511), (119, 134583), (124, 134619), (130, 134643), (133, 134652),

Gene: I3_253 Start: 135560, Stop: 136282, Start Num: 31

Candidate Starts for I3_253:

(Start: 30 @135554 has 35 MA's), (Start: 31 @135560 has 170 MA's), (Start: 42 @135593 has 11 MA's), (52, 135740), (53, 135749), (56, 135776), (57, 135779), (65, 135818), (89, 135968), (101, 136052), (110, 136127), (114, 136148), (116, 136178), (124, 136235), (130, 136259), (134, 136271),

Gene: Idergollasper_35 Start: 17758, Stop: 18450, Start Num: 37

Candidate Starts for Idergollasper_35:

(6, 17287), (12, 17452), (14, 17533), (15, 17551), (21, 17680), (Start: 37 @17758 has 38 MA's), (47, 17863), (56, 17953), (67, 18016), (71, 18037), (72, 18040), (75, 18061), (79, 18085), (103, 18250), (108, 18268), (112, 18292), (123, 18391),

Gene: IkeLoa_237 Start: 134090, Stop: 134806, Start Num: 31

Candidate Starts for IkeLoa_237:

(Start: 30 @134084 has 35 MA's), (Start: 31 @134090 has 170 MA's), (Start: 42 @134123 has 11 MA's), (52, 134270), (53, 134279), (56, 134306), (57, 134309), (65, 134348), (89, 134492), (101, 134576), (110, 134651), (114, 134672), (116, 134702), (124, 134759), (130, 134783), (134, 134795),

Gene: Imara_33 Start: 17567, Stop: 18259, Start Num: 37

Candidate Starts for Imara_33:

(6, 17096), (12, 17261), (14, 17342), (15, 17360), (21, 17489), (Start: 37 @17567 has 38 MA's), (47, 17672), (56, 17762), (67, 17825), (71, 17846), (72, 17849), (75, 17870), (79, 17894), (103, 18059), (108, 18077), (112, 18101), (123, 18200),

Gene: InigoMontoya_247 Start: 134408, Stop: 135124, Start Num: 31

Candidate Starts for InigoMontoya_247:

(Start: 30 @134402 has 35 MA's), (Start: 31 @134408 has 170 MA's), (Start: 42 @134441 has 11 MA's), (52, 134588), (53, 134597), (56, 134624), (57, 134627), (65, 134666), (89, 134810), (101, 134894), (110, 134969), (114, 134990), (116, 135020), (124, 135077), (130, 135101), (134, 135113),

Gene: InterFolia_245 Start: 135223, Stop: 135939, Start Num: 31

Candidate Starts for InterFolia_245:

(Start: 30 @135217 has 35 MA's), (Start: 31 @135223 has 170 MA's), (Start: 42 @135256 has 11 MA's), (52, 135403), (53, 135412), (56, 135439), (57, 135442), (65, 135481), (89, 135625), (101, 135709), (110, 135784), (114, 135805), (116, 135835), (124, 135892), (130, 135916), (134, 135928),

Gene: Iota_240 Start: 134120, Stop: 134836, Start Num: 31

Candidate Starts for Iota_240:

(Start: 30 @134114 has 35 MA's), (Start: 31 @134120 has 170 MA's), (Start: 42 @134153 has 11 MA's), (52, 134300), (53, 134309), (56, 134336), (57, 134339), (65, 134378), (89, 134522), (101, 134606), (110, 134681), (114, 134702), (116, 134732), (124, 134789), (130, 134813), (134, 134825),

Gene: IrishSherpFalk_102 Start: 55787, Stop: 56485, Start Num: 28

Candidate Starts for IrishSherpFalk_102:

(Start: 23 @55769 has 1 MA's), (Start: 28 @55787 has 19 MA's), (50, 55904), (58, 55991), (71, 56069), (72, 56072), (73, 56075), (75, 56093), (97, 56207), (103, 56282),

Gene: Island3_75 Start: 46161, Stop: 46859, Start Num: 37

Candidate Starts for Island3_75:

(Start: 37 @46161 has 38 MA's), (44, 46233), (46, 46242), (56, 46356), (60, 46380), (80, 46494), (92, 46542), (103, 46653),

Gene: Issimir_236 Start: 134046, Stop: 134762, Start Num: 31

Candidate Starts for Issimir_236:

(Start: 30 @134040 has 35 MA's), (Start: 31 @134046 has 170 MA's), (Start: 42 @134079 has 11 MA's), (52, 134226), (53, 134235), (56, 134262), (57, 134265), (65, 134304), (89, 134448), (101, 134532), (110, 134607), (114, 134628), (116, 134658), (124, 134715), (130, 134739), (134, 134751),

Gene: Izajani_239 Start: 134940, Stop: 135656, Start Num: 31

Candidate Starts for Izajani_239:

(Start: 30 @134934 has 35 MA's), (Start: 31 @134940 has 170 MA's), (Start: 42 @134973 has 11 MA's), (52, 135120), (53, 135129), (56, 135156), (57, 135159), (65, 135198), (89, 135342), (101, 135426), (110, 135501), (114, 135522), (116, 135552), (124, 135609), (130, 135633), (134, 135645),

Gene: JPickles_240 Start: 133096, Stop: 133812, Start Num: 31

Candidate Starts for JPickles_240:

(Start: 30 @133090 has 35 MA's), (Start: 31 @133096 has 170 MA's), (Start: 42 @133129 has 11 MA's), (52, 133276), (53, 133285), (56, 133312), (57, 133315), (65, 133354), (89, 133498), (101, 133582), (110, 133657), (114, 133678), (116, 133708), (124, 133765), (130, 133789), (134, 133801),

Gene: Jabbawokkie_107 Start: 53803, Stop: 54501, Start Num: 28

Candidate Starts for Jabbawokkie_107:

(17, 53731), (20, 53755), (Start: 23 @53785 has 1 MA's), (Start: 28 @53803 has 19 MA's), (50, 53920), (58, 54007), (69, 54070), (71, 54085), (72, 54088), (73, 54091), (75, 54109), (80, 54139), (103, 54298),

Gene: JangDynasty_35 Start: 17853, Stop: 18545, Start Num: 37

Candidate Starts for JangDynasty_35:

(6, 17382), (12, 17547), (14, 17628), (15, 17646), (21, 17775), (Start: 37 @17853 has 38 MA's), (47, 17958), (56, 18048), (67, 18111), (71, 18132), (72, 18135), (75, 18156), (79, 18180), (103, 18345), (108, 18363), (112, 18387), (123, 18486),

Gene: Janiyra_246 Start: 134633, Stop: 135349, Start Num: 31

Candidate Starts for Janiyra_246:

(Start: 30 @134627 has 35 MA's), (Start: 31 @134633 has 170 MA's), (Start: 42 @134666 has 11 MA's), (52, 134813), (53, 134822), (56, 134849), (57, 134852), (65, 134891), (89, 135035), (101, 135119), (110, 135194), (114, 135215), (116, 135245), (124, 135302), (130, 135326), (134, 135338),

Gene: JayJay_243 Start: 133993, Stop: 134703, Start Num: 31

Candidate Starts for JayJay_243:

(Start: 31 @133993 has 170 MA's), (Start: 42 @134026 has 11 MA's), (52, 134173), (53, 134182), (56, 134209), (57, 134212), (64, 134248), (65, 134251), (86, 134392), (101, 134476), (110, 134551), (114, 134572), (116, 134602), (124, 134659), (130, 134683), (133, 134692),

Gene: Jaygup_240 Start: 134267, Stop: 134983, Start Num: 31

Candidate Starts for Jaygup_240:

(Start: 30 @134261 has 35 MA's), (Start: 31 @134267 has 170 MA's), (Start: 42 @134300 has 11 MA's), (52, 134447), (53, 134456), (56, 134483), (57, 134486), (65, 134525), (89, 134669), (101, 134753), (110, 134828), (114, 134849), (116, 134879), (124, 134936), (130, 134960), (134, 134972),

Gene: Jedediah_245 Start: 135320, Stop: 136036, Start Num: 31

Candidate Starts for Jedediah_245:

(Start: 30 @135314 has 35 MA's), (Start: 31 @135320 has 170 MA's), (Start: 42 @135353 has 11 MA's), (52, 135500), (53, 135509), (56, 135536), (57, 135539), (65, 135578), (89, 135722), (101, 135806), (110, 135881), (114, 135902), (116, 135932), (124, 135989), (130, 136013), (134, 136025),

Gene: Jemmno_243 Start: 134039, Stop: 134755, Start Num: 31

Candidate Starts for Jemmno_243:

(Start: 30 @134033 has 35 MA's), (Start: 31 @134039 has 170 MA's), (Start: 42 @134072 has 11 MA's), (52, 134219), (53, 134228), (56, 134255), (57, 134258), (65, 134297), (89, 134441), (101, 134525), (110, 134600), (114, 134621), (116, 134651), (124, 134708), (130, 134732), (134, 134744),

Gene: Jessibeth14_243 Start: 135515, Stop: 136231, Start Num: 31

Candidate Starts for Jessibeth14_243:

(Start: 30 @135509 has 35 MA's), (Start: 31 @135515 has 170 MA's), (Start: 42 @135548 has 11 MA's), (52, 135695), (53, 135704), (56, 135731), (57, 135734), (65, 135773), (89, 135917), (101, 136001), (110, 136076), (114, 136097), (116, 136127), (124, 136184), (130, 136208), (134, 136220),

Gene: Jezreel_240 Start: 134584, Stop: 135300, Start Num: 31

Candidate Starts for Jezreel_240:

(Start: 30 @134578 has 35 MA's), (Start: 31 @134584 has 170 MA's), (Start: 42 @134617 has 11 MA's), (52, 134764), (53, 134773), (56, 134800), (57, 134803), (65, 134842), (89, 134986), (101, 135070), (110, 135145), (114, 135166), (116, 135196), (124, 135253), (130, 135277), (134, 135289),

Gene: JigglyPuff_249 Start: 136010, Stop: 136726, Start Num: 31

Candidate Starts for JigglyPuff_249:

(17, 135914), (Start: 30 @136004 has 35 MA's), (Start: 31 @136010 has 170 MA's), (Start: 42 @136043 has 11 MA's), (52, 136190), (53, 136199), (56, 136226), (57, 136229), (65, 136268), (89, 136412), (101, 136496), (110, 136571), (114, 136592), (116, 136622), (124, 136679), (130, 136703), (134, 136715),

Gene: Jinglebell_109 Start: 57042, Stop: 57740, Start Num: 28

Candidate Starts for Jinglebell_109:

(Start: 23 @57024 has 1 MA's), (Start: 28 @57042 has 19 MA's), (49, 57156), (58, 57246), (71, 57324), (72, 57327), (73, 57330), (75, 57348), (97, 57462), (103, 57537),

Gene: JoieB_87 Start: 46595, Stop: 47323, Start Num: 29

Candidate Starts for JoieB_87:

(Start: 29 @46595 has 19 MA's), (Start: 41 @46610 has 2 MA's), (43, 46655), (48, 46706), (49, 46709), (52, 46772), (56, 46808), (60, 46832), (63, 46847), (67, 46874), (72, 46898), (90, 46985), (91, 46994), (96, 47027), (103, 47105), (108, 47123), (112, 47147), (136, 47309),

Gene: JuicyJay_21 Start: 13867, Stop: 14568, Start Num: 30

Candidate Starts for JuicyJay_21:

(18, 13801), (Start: 30 @13867 has 35 MA's), (47, 13972), (50, 13981), (55, 14047), (73, 14152), (75, 14170), (76, 14176), (94, 14275), (97, 14284), (103, 14359), (112, 14401), (135, 14545),

Gene: JulietS_232 Start: 131619, Stop: 132335, Start Num: 31

Candidate Starts for JulietS_232:

(Start: 30 @131613 has 35 MA's), (Start: 31 @131619 has 170 MA's), (Start: 42 @131652 has 11 MA's), (52, 131799), (53, 131808), (56, 131835), (57, 131838), (65, 131877), (89, 132021), (101, 132105), (110, 132180), (114, 132201), (116, 132231), (124, 132288), (130, 132312), (134, 132324),

Gene: JustBecause_68 Start: 51575, Stop: 50868, Start Num: 38

Candidate Starts for JustBecause_68:

(Start: 38 @51575 has 9 MA's), (45, 51506), (50, 51467), (51, 51422), (57, 51386), (61, 51362), (66, 51338), (68, 51329), (73, 51305), (76, 51281), (87, 51218), (97, 51164), (105, 51083), (137, 50873),

Gene: JustHall_237 Start: 133569, Stop: 134285, Start Num: 31

Candidate Starts for JustHall_237:

(Start: 30 @133563 has 35 MA's), (Start: 31 @133569 has 170 MA's), (Start: 42 @133602 has 11 MA's), (52, 133749), (53, 133758), (56, 133785), (57, 133788), (65, 133827), (89, 133971), (101, 134055), (110, 134130), (114, 134151), (116, 134181), (124, 134238), (130, 134262), (134, 134274),

Gene: Kalah2_20 Start: 13635, Stop: 14336, Start Num: 30

Candidate Starts for Kalah2_20:

(18, 13569), (Start: 30 @13635 has 35 MA's), (47, 13740), (50, 13749), (55, 13815), (73, 13920), (75, 13938), (76, 13944), (94, 14043), (97, 14052), (103, 14127), (112, 14169), (135, 14313),

Gene: Kamryn_242 Start: 135159, Stop: 135875, Start Num: 31

Candidate Starts for Kamryn_242:

(Start: 30 @135153 has 35 MA's), (Start: 31 @135159 has 170 MA's), (Start: 42 @135192 has 11 MA's), (52, 135339), (53, 135348), (56, 135375), (57, 135378), (65, 135417), (89, 135561), (101, 135645), (110, 135720), (114, 135741), (116, 135771), (124, 135828), (130, 135852), (134, 135864),

Gene: KashFlow_11 Start: 9245, Stop: 9946, Start Num: 30

Candidate Starts for KashFlow_11:

(16, 9110), (Start: 30 @9245 has 35 MA's), (55, 9425), (75, 9548), (80, 9578), (103, 9737), (115, 9809), (125, 9884), (138, 9938),

Gene: Kboogie_247 Start: 134198, Stop: 134914, Start Num: 31

Candidate Starts for Kboogie_247:

(Start: 30 @134192 has 35 MA's), (Start: 31 @134198 has 170 MA's), (Start: 42 @134231 has 11 MA's), (52, 134378), (53, 134387), (56, 134414), (57, 134417), (65, 134456), (89, 134600), (101, 134684), (110, 134759), (114, 134780), (116, 134810), (124, 134867), (130, 134891), (134, 134903),

Gene: Kela_69 Start: 51440, Stop: 50733, Start Num: 38

Candidate Starts for Kela_69:

(Start: 38 @51440 has 9 MA's), (45, 51371), (50, 51332), (51, 51287), (57, 51251), (61, 51227), (66, 51203), (68, 51194), (73, 51170), (76, 51146), (87, 51083), (97, 51029), (105, 50948), (137, 50738),

Gene: Khaleesi_242 Start: 134982, Stop: 135698, Start Num: 31

Candidate Starts for Khaleesi_242:

(Start: 30 @134976 has 35 MA's), (Start: 31 @134982 has 170 MA's), (Start: 42 @135015 has 11 MA's), (52, 135162), (53, 135171), (56, 135198), (57, 135201), (65, 135240), (89, 135384), (101, 135468), (110, 135543), (114, 135564), (116, 135594), (124, 135651), (130, 135675), (134, 135687),

Gene: KingPhillip3_35 Start: 17758, Stop: 18450, Start Num: 37

Candidate Starts for KingPhillip3_35:

(6, 17287), (12, 17452), (14, 17533), (15, 17551), (21, 17680), (Start: 37 @17758 has 38 MA's), (47, 17863), (56, 17953), (67, 18016), (71, 18037), (72, 18040), (75, 18061), (79, 18085), (103, 18250), (108, 18268), (112, 18292), (123, 18391),

Gene: Klein_20 Start: 12613, Stop: 13314, Start Num: 30

Candidate Starts for Klein_20:

(18, 12547), (Start: 30 @12613 has 35 MA's), (47, 12718), (50, 12727), (55, 12793), (73, 12898), (75, 12916), (76, 12922), (94, 13021), (97, 13030), (103, 13105), (112, 13147), (135, 13291),

Gene: Koguma_242 Start: 133851, Stop: 134567, Start Num: 31

Candidate Starts for Koguma_242:

(Start: 30 @133845 has 35 MA's), (Start: 31 @133851 has 170 MA's), (Start: 42 @133884 has 11 MA's), (52, 134031), (53, 134040), (56, 134067), (57, 134070), (65, 134109), (89, 134253), (101, 134337), (110, 134412), (114, 134433), (116, 134463), (124, 134520), (130, 134544), (134, 134556),

Gene: Kradal_73 Start: 54211, Stop: 53504, Start Num: 38

Candidate Starts for Kradal_73:

(Start: 38 @54211 has 9 MA's), (45, 54142), (49, 54106), (56, 54025), (58, 54019), (68, 53965), (73, 53941), (74, 53926), (76, 53917), (81, 53881), (97, 53800), (98, 53797), (100, 53785), (105, 53719), (109, 53704), (121, 53593), (137, 53509),

Gene: Krili_34 Start: 17486, Stop: 18178, Start Num: 37

Candidate Starts for Krili_34:

(12, 17180), (14, 17261), (15, 17279), (21, 17408), (Start: 37 @17486 has 38 MA's), (47, 17591), (56, 17681), (67, 17744), (71, 17765), (72, 17768), (75, 17789), (79, 17813), (103, 17978), (108, 17996), (112, 18020),

Gene: Kudfre_125 Start: 67574, Stop: 68203, Start Num: 41

Candidate Starts for Kudfre_125:

(36, 67559), (Start: 41 @67574 has 2 MA's), (56, 67751), (57, 67754), (71, 67832), (85, 67892), (95, 67943), (101, 67982), (109, 68048), (130, 68180), (133, 68189),

Gene: LRRHood_235 Start: 133191, Stop: 133907, Start Num: 31

Candidate Starts for LRRHood_235:

(Start: 30 @133185 has 35 MA's), (Start: 31 @133191 has 170 MA's), (Start: 42 @133224 has 11 MA's), (52, 133371), (53, 133380), (56, 133407), (57, 133410), (65, 133449), (89, 133593), (101, 133677), (110, 133752), (114, 133773), (116, 133803), (124, 133860), (130, 133884), (134, 133896),

Gene: Labradorite_240 Start: 133758, Stop: 134474, Start Num: 31

Candidate Starts for Labradorite_240:

(Start: 30 @133752 has 35 MA's), (Start: 31 @133758 has 170 MA's), (Start: 42 @133791 has 11 MA's), (52, 133938), (53, 133947), (56, 133974), (57, 133977), (65, 134016), (89, 134160), (101, 134244), (110, 134319), (114, 134340), (116, 134370), (124, 134427), (130, 134451), (134, 134463),

Gene: Latch_243 Start: 133744, Stop: 134460, Start Num: 31

Candidate Starts for Latch_243:

(Start: 30 @133738 has 35 MA's), (Start: 31 @133744 has 170 MA's), (Start: 42 @133777 has 11 MA's), (52, 133924), (53, 133933), (56, 133960), (57, 133963), (65, 134002), (89, 134146), (101, 134230), (110, 134305), (114, 134326), (116, 134356), (124, 134413), (130, 134437), (134, 134449),

Gene: Lee7_242 Start: 136396, Stop: 137112, Start Num: 31

Candidate Starts for Lee7_242:

(Start: 30 @136390 has 35 MA's), (Start: 31 @136396 has 170 MA's), (Start: 42 @136429 has 11 MA's), (52, 136576), (53, 136585), (56, 136612), (57, 136615), (65, 136654), (89, 136798), (101, 136882), (110, 136957), (114, 136978), (116, 137008), (124, 137065), (130, 137089), (134, 137101),

Gene: Lethe_241 Start: 135635, Stop: 136351, Start Num: 31

Candidate Starts for Lethe_241:

(Start: 30 @135629 has 35 MA's), (Start: 31 @135635 has 170 MA's), (Start: 42 @135668 has 11 MA's), (52, 135815), (53, 135824), (56, 135851), (57, 135854), (65, 135893), (89, 136037), (101, 136121), (110, 136196), (114, 136217), (116, 136247), (124, 136304), (130, 136328), (134, 136340),

Gene: LifeSavor_244 Start: 134972, Stop: 135688, Start Num: 31

Candidate Starts for LifeSavor_244:

(Start: 30 @134966 has 35 MA's), (Start: 31 @134972 has 170 MA's), (Start: 42 @135005 has 11 MA's), (52, 135152), (53, 135161), (56, 135188), (57, 135191), (65, 135230), (89, 135374), (101, 135458), (110, 135533), (114, 135554), (116, 135584), (124, 135641), (130, 135665), (134, 135677),

Gene: LilJank_119 Start: 69456, Stop: 70094, Start Num: 37

Candidate Starts for LilJank_119:

(22, 69381), (24, 69405), (33, 69444), (Start: 37 @69456 has 38 MA's), (52, 69624), (68, 69711), (71, 69726), (82, 69771), (93, 69825), (95, 69837), (96, 69840), (101, 69876), (105, 69927), (110, 69951), (111, 69960), (113, 69969), (118, 70005), (122, 70041), (126, 70056), (128, 70071), (130, 70074), (133, 70083),

Gene: Lilbit_83 Start: 46692, Stop: 47420, Start Num: 29

Candidate Starts for Lilbit_83:

(Start: 29 @46692 has 19 MA's), (Start: 41 @46707 has 2 MA's), (43, 46752), (48, 46803), (49, 46806), (52, 46869), (56, 46905), (60, 46929), (63, 46944), (67, 46971), (72, 46995), (84, 47070), (90, 47082), (91, 47091), (96, 47124), (103, 47202), (108, 47220), (112, 47244), (136, 47406),

Gene: LinStu_240 Start: 133150, Stop: 133866, Start Num: 31

Candidate Starts for LinStu_240:

(Start: 30 @133144 has 35 MA's), (Start: 31 @133150 has 170 MA's), (Start: 42 @133183 has 11 MA's), (52, 133330), (53, 133339), (56, 133366), (57, 133369), (65, 133408), (89, 133552), (101, 133636), (110, 133711), (114, 133732), (116, 133762), (124, 133819), (130, 133843), (134, 133855),

Gene: LittleLaf_85 Start: 46421, Stop: 47149, Start Num: 29

Candidate Starts for LittleLaf_85:

(Start: 29 @46421 has 19 MA's), (Start: 41 @46436 has 2 MA's), (43, 46481), (48, 46532), (49, 46535), (52, 46598), (56, 46634), (60, 46658), (63, 46673), (67, 46700), (72, 46724), (84, 46799), (90, 46811), (91, 46820), (96, 46853), (103, 46931), (108, 46949), (112, 46973), (136, 47135),

Gene: Littleton_247 Start: 134981, Stop: 135697, Start Num: 31

Candidate Starts for Littleton_247:

(Start: 30 @134975 has 35 MA's), (Start: 31 @134981 has 170 MA's), (Start: 42 @135014 has 11 MA's), (52, 135161), (53, 135170), (56, 135197), (57, 135200), (65, 135239), (89, 135383), (101, 135467), (110, 135542), (114, 135563), (116, 135593), (124, 135650), (130, 135674), (134, 135686),

Gene: Llama_109 Start: 56685, Stop: 57383, Start Num: 28

Candidate Starts for Llama_109:

(Start: 23 @56667 has 1 MA's), (Start: 28 @56685 has 19 MA's), (49, 56799), (58, 56889), (71, 56967), (72, 56970), (73, 56973), (75, 56991), (97, 57105), (103, 57180),

Gene: Loanshark_240 Start: 134331, Stop: 135047, Start Num: 31

Candidate Starts for Loanshark_240:

(Start: 30 @134325 has 35 MA's), (Start: 31 @134331 has 170 MA's), (Start: 42 @134364 has 11 MA's), (52, 134511), (53, 134520), (56, 134547), (57, 134550), (65, 134589), (89, 134733), (101, 134817), (110, 134892), (114, 134913), (116, 134943), (124, 135000), (130, 135024), (134, 135036),

Gene: LolaVinca_239 Start: 134653, Stop: 135369, Start Num: 31

Candidate Starts for LolaVinca_239:

(Start: 30 @134647 has 35 MA's), (Start: 31 @134653 has 170 MA's), (Start: 42 @134686 has 11 MA's), (52, 134833), (53, 134842), (56, 134869), (57, 134872), (65, 134911), (89, 135055), (101, 135139), (110, 135214), (114, 135235), (116, 135265), (124, 135322), (130, 135346), (134, 135358),

Gene: LookingGlass_241 Start: 134489, Stop: 135205, Start Num: 31

Candidate Starts for LookingGlass_241:

(Start: 30 @134483 has 35 MA's), (Start: 31 @134489 has 170 MA's), (Start: 42 @134522 has 11 MA's), (52, 134669), (53, 134678), (56, 134705), (57, 134708), (65, 134747), (89, 134891), (101, 134975), (110, 135050), (114, 135071), (116, 135101), (124, 135158), (130, 135182), (134, 135194),

Gene: LordLeafolot_244 Start: 134266, Stop: 134982, Start Num: 31

Candidate Starts for LordLeafolot_244:

(Start: 30 @134260 has 35 MA's), (Start: 31 @134266 has 170 MA's), (Start: 42 @134299 has 11 MA's), (52, 134446), (53, 134455), (56, 134482), (57, 134485), (65, 134524), (89, 134668), (101, 134752), (110, 134827), (114, 134848), (116, 134878), (124, 134935), (130, 134959), (134, 134971),

Gene: Lukilu_232 Start: 135207, Stop: 135923, Start Num: 31

Candidate Starts for Lukilu_232:

(Start: 30 @135201 has 35 MA's), (Start: 31 @135207 has 170 MA's), (Start: 42 @135240 has 11 MA's), (52, 135387), (53, 135396), (56, 135423), (57, 135426), (65, 135465), (89, 135609), (101, 135693), (110, 135768), (114, 135789), (116, 135819), (124, 135876), (130, 135900), (134, 135912),

Gene: Lunareta_240 Start: 135013, Stop: 135723, Start Num: 31

Candidate Starts for Lunareta_240:

(Start: 31 @135013 has 170 MA's), (Start: 42 @135046 has 11 MA's), (52, 135193), (53, 135202), (56, 135229), (57, 135232), (64, 135268), (65, 135271), (86, 135412), (101, 135496), (110, 135571), (114, 135592), (116, 135622), (124, 135679), (130, 135703), (133, 135712),

Gene: Maby2021_243 Start: 135435, Stop: 136151, Start Num: 31

Candidate Starts for Maby2021_243:

(Start: 30 @135429 has 35 MA's), (Start: 31 @135435 has 170 MA's), (Start: 42 @135468 has 11 MA's), (52, 135615), (53, 135624), (56, 135651), (57, 135654), (65, 135693), (89, 135837), (101, 135921), (110, 135996), (114, 136017), (116, 136047), (124, 136104), (130, 136128), (134, 136140),

Gene: MadKillah_36 Start: 17696, Stop: 18388, Start Num: 37

Candidate Starts for MadKillah_36:

(12, 17390), (14, 17471), (15, 17489), (21, 17618), (Start: 37 @17696 has 38 MA's), (47, 17801), (56, 17891), (67, 17954), (71, 17975), (72, 17978), (75, 17999), (79, 18023), (103, 18188), (108, 18206), (112, 18230),

Gene: Mangeria_243 Start: 135210, Stop: 135926, Start Num: 31

Candidate Starts for Mangeria_243:

(Start: 30 @135204 has 35 MA's), (Start: 31 @135210 has 170 MA's), (Start: 42 @135243 has 11 MA's), (52, 135390), (53, 135399), (56, 135426), (57, 135429), (65, 135468), (78, 135558), (89, 135612), (101, 135696), (110, 135771), (114, 135792), (116, 135822), (124, 135879), (130, 135903), (134, 135915),

Gene: Marleymoo_21 Start: 13694, Stop: 14395, Start Num: 30

Candidate Starts for Marleymoo_21:

(18, 13628), (Start: 30 @13694 has 35 MA's), (47, 13799), (50, 13808), (55, 13874), (73, 13979), (75, 13997), (76, 14003), (97, 14111), (103, 14186), (112, 14228), (135, 14372),

Gene: Marvin_81 Start: 46217, Stop: 46945, Start Num: 29

Candidate Starts for Marvin_81:

(Start: 29 @46217 has 19 MA's), (Start: 41 @46232 has 2 MA's), (43, 46277), (48, 46328), (49, 46331), (52, 46394), (56, 46430), (60, 46454), (63, 46469), (67, 46496), (72, 46520), (84, 46595), (90, 46607), (91, 46616), (96, 46649), (103, 46727), (108, 46745), (112, 46769), (136, 46931),

Gene: Matsumoto_241 Start: 134186, Stop: 134902, Start Num: 31

Candidate Starts for Matsumoto_241:

(Start: 30 @134180 has 35 MA's), (Start: 31 @134186 has 170 MA's), (Start: 42 @134219 has 11 MA's), (52, 134366), (53, 134375), (56, 134402), (57, 134405), (65, 134444), (89, 134588), (101, 134672), (110, 134747), (114, 134768), (116, 134798), (124, 134855), (130, 134879), (134, 134891),

Gene: Maturis_237 Start: 133979, Stop: 134689, Start Num: 31

Candidate Starts for Maturis_237:

(Start: 31 @133979 has 170 MA's), (Start: 42 @134012 has 11 MA's), (52, 134159), (53, 134168), (56, 134195), (57, 134198), (64, 134234), (65, 134237), (86, 134378), (101, 134462), (110, 134537), (114, 134558), (116, 134588), (124, 134645), (130, 134669), (133, 134678),

Gene: McGee_244 Start: 134083, Stop: 134799, Start Num: 31

Candidate Starts for McGee_244:

(Start: 30 @134077 has 35 MA's), (Start: 31 @134083 has 170 MA's), (Start: 42 @134116 has 11 MA's), (52, 134263), (53, 134272), (56, 134299), (57, 134302), (65, 134341), (89, 134485), (101, 134569), (110, 134644), (114, 134665), (116, 134695), (124, 134752), (130, 134776), (134, 134788),

Gene: McWolfish_240 Start: 134193, Stop: 134909, Start Num: 31

Candidate Starts for McWolfish_240:

(Start: 30 @134187 has 35 MA's), (Start: 31 @134193 has 170 MA's), (Start: 42 @134226 has 11 MA's), (52, 134373), (53, 134382), (56, 134409), (57, 134412), (65, 134451), (89, 134595), (101, 134679), (110, 134754), (114, 134775), (116, 134805), (124, 134862), (130, 134886), (134, 134898),

Gene: Megamind_240 Start: 134518, Stop: 135234, Start Num: 31

Candidate Starts for Megamind_240:

(Start: 30 @134512 has 35 MA's), (Start: 31 @134518 has 170 MA's), (Start: 42 @134551 has 11 MA's), (52, 134698), (53, 134707), (56, 134734), (57, 134737), (65, 134776), (89, 134920), (101, 135004), (110, 135079), (114, 135100), (116, 135130), (124, 135187), (130, 135211), (134, 135223),

Gene: Melpomini_238 Start: 133278, Stop: 133994, Start Num: 31

Candidate Starts for Melpomini_238:

(Start: 30 @133272 has 35 MA's), (Start: 31 @133278 has 170 MA's), (Start: 42 @133311 has 11 MA's), (52, 133458), (53, 133467), (56, 133494), (57, 133497), (65, 133536), (89, 133680), (101, 133764), (110, 133839), (114, 133860), (116, 133890), (124, 133947), (130, 133971), (134, 133983),

Gene: MiaZeal_17 Start: 10818, Stop: 11519, Start Num: 30

Candidate Starts for MiaZeal_17:

(16, 10683), (Start: 30 @10818 has 35 MA's), (55, 10998), (75, 11121), (80, 11151), (103, 11310), (115, 11382), (125, 11457), (138, 11511),

Gene: MikeLiesIn_244 Start: 135654, Stop: 136370, Start Num: 31

Candidate Starts for MikeLiesIn_244:

(Start: 30 @135648 has 35 MA's), (Start: 31 @135654 has 170 MA's), (Start: 42 @135687 has 11 MA's), (52, 135834), (53, 135843), (56, 135870), (57, 135873), (65, 135912), (89, 136056), (101, 136140), (110, 136215), (114, 136236), (116, 136266), (124, 136323), (130, 136347), (134, 136359),

Gene: Mikro_237 Start: 136166, Stop: 136882, Start Num: 31

Candidate Starts for Mikro_237:

(Start: 30 @136160 has 35 MA's), (Start: 31 @136166 has 170 MA's), (Start: 42 @136199 has 11 MA's), (52, 136346), (53, 136355), (56, 136382), (57, 136385), (65, 136424), (89, 136568), (101, 136652), (110, 136727), (114, 136748), (116, 136778), (124, 136835), (130, 136859), (134, 136871),

Gene: Minerva_19 Start: 13096, Stop: 13797, Start Num: 30

Candidate Starts for Minerva_19:

(18, 13030), (Start: 30 @13096 has 35 MA's), (47, 13201), (50, 13210), (55, 13276), (73, 13381), (75, 13399), (76, 13405), (94, 13504), (97, 13513), (103, 13588), (112, 13630), (135, 13774),

Gene: MoMoMixon_239 Start: 134659, Stop: 135375, Start Num: 31

Candidate Starts for MoMoMixon_239:

(Start: 30 @134653 has 35 MA's), (Start: 31 @134659 has 170 MA's), (Start: 42 @134692 has 11 MA's), (52, 134839), (53, 134848), (56, 134875), (57, 134878), (65, 134917), (89, 135061), (101, 135145), (110, 135220), (114, 135241), (116, 135271), (124, 135328), (130, 135352), (134, 135364),

Gene: Moby_240 Start: 133592, Stop: 134302, Start Num: 31

Candidate Starts for Moby_240:

(Start: 31 @133592 has 170 MA's), (52, 133772), (53, 133781), (56, 133808), (57, 133811), (64, 133847), (65, 133850), (86, 133991), (101, 134075), (110, 134150), (119, 134222), (124, 134258), (130, 134282), (133, 134291),

Gene: Modragons_105 Start: 56673, Stop: 57371, Start Num: 28

Candidate Starts for Modragons_105:

(Start: 23 @56655 has 1 MA's), (Start: 28 @56673 has 19 MA's), (49, 56787), (58, 56877), (71, 56955), (72, 56958), (73, 56961), (75, 56979), (97, 57093), (103, 57168),

Gene: Moiqah_240 Start: 133569, Stop: 134279, Start Num: 31

Candidate Starts for Moiqah_240:

(Start: 31 @133569 has 170 MA's), (52, 133749), (53, 133758), (56, 133785), (57, 133788), (64, 133824), (65, 133827), (86, 133968), (101, 134052), (110, 134127), (119, 134199), (124, 134235), (130, 134259), (133, 134268),

Gene: Momo_245 Start: 133744, Stop: 134460, Start Num: 31

Candidate Starts for Momo_245:

(Start: 30 @133738 has 35 MA's), (Start: 31 @133744 has 170 MA's), (Start: 42 @133777 has 11 MA's), (52, 133924), (53, 133933), (56, 133960), (57, 133963), (65, 134002), (89, 134146), (101, 134230), (110, 134305), (114, 134326), (116, 134356), (124, 134413), (130, 134437), (134, 134449),

Gene: Montpel_240 Start: 135011, Stop: 135721, Start Num: 31

Candidate Starts for Montpel_240:

(Start: 31 @135011 has 170 MA's), (Start: 42 @135044 has 11 MA's), (52, 135191), (53, 135200), (56, 135227), (57, 135230), (64, 135266), (65, 135269), (86, 135410), (101, 135494), (110, 135569), (114, 135590), (116, 135620), (124, 135677), (130, 135701), (133, 135710),

Gene: Mori_34 Start: 17357, Stop: 18049, Start Num: 37

Candidate Starts for Mori_34:

(12, 17051), (14, 17132), (15, 17150), (21, 17279), (Start: 37 @17357 has 38 MA's), (47, 17462), (56, 17552), (67, 17615), (71, 17636), (72, 17639), (75, 17660), (79, 17684), (103, 17849), (108, 17867), (112, 17891),

Gene: Morizzled23_240 Start: 133111, Stop: 133827, Start Num: 31

Candidate Starts for Morizzled23_240:

(Start: 30 @133105 has 35 MA's), (Start: 31 @133111 has 170 MA's), (Start: 42 @133144 has 11 MA's), (52, 133291), (53, 133300), (56, 133327), (57, 133330), (65, 133369), (89, 133513), (101, 133597), (110, 133672), (114, 133693), (116, 133723), (124, 133780), (130, 133804), (134, 133816),

Gene: MosMoris_81 Start: 46112, Stop: 46840, Start Num: 29

Candidate Starts for MosMoris_81:

(Start: 29 @46112 has 19 MA's), (Start: 41 @46127 has 2 MA's), (43, 46172), (48, 46223), (49, 46226), (52, 46289), (56, 46325), (60, 46349), (63, 46364), (67, 46391), (72, 46415), (90, 46502), (91, 46511), (96, 46544), (103, 46622), (108, 46640), (112, 46664), (136, 46826),

Gene: Murai_35 Start: 17547, Stop: 18239, Start Num: 37

Candidate Starts for Murai_35:

(12, 17241), (14, 17322), (15, 17340), (21, 17469), (Start: 37 @17547 has 38 MA's), (47, 17652), (56, 17742), (67, 17805), (71, 17826), (72, 17829), (75, 17850), (79, 17874), (103, 18039), (108, 18057), (112, 18081),

Gene: Naija_244 Start: 134447, Stop: 135163, Start Num: 31

Candidate Starts for Naija_244:

(Start: 30 @134441 has 35 MA's), (Start: 31 @134447 has 170 MA's), (Start: 42 @134480 has 11 MA's), (52, 134627), (53, 134636), (56, 134663), (57, 134666), (65, 134705), (89, 134849), (101, 134933), (110, 135008), (114, 135029), (116, 135059), (124, 135116), (130, 135140), (134, 135152),

Gene: Napoleon13_240 Start: 133476, Stop: 134192, Start Num: 31

Candidate Starts for Napoleon13_240:

(Start: 30 @133470 has 35 MA's), (Start: 31 @133476 has 170 MA's), (Start: 42 @133509 has 11 MA's), (52, 133656), (53, 133665), (56, 133692), (57, 133695), (65, 133734), (89, 133878), (101, 133962), (110, 134037), (114, 134058), (116, 134088), (124, 134145), (130, 134169), (134, 134181),

Gene: Nappy_242 Start: 135622, Stop: 136338, Start Num: 31

Candidate Starts for Nappy_242:

(Start: 30 @135616 has 35 MA's), (Start: 31 @135622 has 170 MA's), (Start: 42 @135655 has 11 MA's), (52, 135802), (53, 135811), (56, 135838), (57, 135841), (65, 135880), (89, 136024), (101, 136108), (110, 136183), (114, 136204), (116, 136234), (124, 136291), (130, 136315), (134, 136327),

Gene: Naval22_250 Start: 136227, Stop: 136943, Start Num: 31

Candidate Starts for Naval22_250:

(Start: 30 @136221 has 35 MA's), (Start: 31 @136227 has 170 MA's), (Start: 42 @136260 has 11 MA's), (52, 136407), (53, 136416), (56, 136443), (57, 136446), (65, 136485), (89, 136629), (101, 136713), (110, 136788), (114, 136809), (116, 136839), (124, 136896), (130, 136920), (134, 136932),

Gene: NedWong_242 Start: 134905, Stop: 135621, Start Num: 31

Candidate Starts for NedWong_242:

(Start: 30 @134899 has 35 MA's), (Start: 31 @134905 has 170 MA's), (Start: 42 @134938 has 11 MA's), (52, 135085), (53, 135094), (56, 135121), (57, 135124), (65, 135163), (89, 135307), (101, 135391), (110, 135466), (114, 135487), (116, 135517), (124, 135574), (130, 135598), (134, 135610),

Gene: Nekros_15 Start: 10866, Stop: 11567, Start Num: 30

Candidate Starts for Nekros_15:

(16, 10731), (Start: 30 @10866 has 35 MA's), (55, 11046), (75, 11169), (80, 11199), (103, 11358), (115, 11430), (125, 11505), (138, 11559),

Gene: Neville_122 Start: 68676, Stop: 69314, Start Num: 37

Candidate Starts for Neville_122:

(22, 68601), (24, 68625), (33, 68664), (Start: 37 @68676 has 38 MA's), (52, 68844), (68, 68931), (71, 68946), (82, 68991), (93, 69045), (95, 69057), (96, 69060), (101, 69096), (105, 69147), (110, 69171), (111, 69180), (113, 69189), (118, 69225), (122, 69261), (126, 69276), (128, 69291), (130, 69294), (133, 69303),

Gene: Ngannou_238 Start: 133429, Stop: 134145, Start Num: 31

Candidate Starts for Ngannou_238:

(Start: 30 @133423 has 35 MA's), (Start: 31 @133429 has 170 MA's), (Start: 42 @133462 has 11 MA's), (52, 133609), (53, 133618), (56, 133645), (57, 133648), (65, 133687), (89, 133831), (101, 133915), (110, 133990), (114, 134011), (116, 134041), (124, 134098), (130, 134122), (134, 134134),

Gene: Nichirin_102 Start: 56528, Stop: 57226, Start Num: 28

Candidate Starts for Nichirin_102:

(Start: 23 @56510 has 1 MA's), (Start: 28 @56528 has 19 MA's), (49, 56642), (58, 56732), (71, 56810), (72, 56813), (73, 56816), (75, 56834), (97, 56948), (103, 57023),

Gene: Nidhogg_244 Start: 135273, Stop: 135989, Start Num: 31

Candidate Starts for Nidhogg_244:

(Start: 30 @135267 has 35 MA's), (Start: 31 @135273 has 170 MA's), (Start: 42 @135306 has 11 MA's), (52, 135453), (53, 135462), (56, 135489), (57, 135492), (65, 135531), (89, 135675), (101, 135759), (110, 135834), (114, 135855), (116, 135885), (124, 135942), (130, 135966), (134, 135978),

Gene: NiebruSaylor_34 Start: 17358, Stop: 18050, Start Num: 37

Candidate Starts for NiebruSaylor_34:

(12, 17052), (14, 17133), (15, 17151), (21, 17280), (Start: 37 @17358 has 38 MA's), (47, 17463), (56, 17553), (67, 17616), (71, 17637), (72, 17640), (75, 17661), (79, 17685), (103, 17850), (108, 17868), (112, 17892),

Gene: NihilNomen_19 Start: 13095, Stop: 13796, Start Num: 30

Candidate Starts for NihilNomen_19:

(18, 13029), (Start: 30 @13095 has 35 MA's), (47, 13200), (50, 13209), (55, 13275), (71, 13374), (73, 13380), (75, 13398), (76, 13404), (94, 13503), (97, 13512), (103, 13587), (112, 13629), (135, 13773),

Gene: Nirvana_77 Start: 56304, Stop: 55597, Start Num: 38

Candidate Starts for Nirvana_77:

(Start: 38 @56304 has 9 MA's), (45, 56235), (51, 56151), (57, 56115), (59, 56109), (66, 56067), (74, 56019), (76, 56010), (77, 56001), (97, 55893), (137, 55602),

Gene: NoodleTree_239 Start: 130057, Stop: 130740, Start Num: 42

Candidate Starts for NoodleTree_239:

(Start: 30 @130018 has 35 MA's), (Start: 31 @130024 has 170 MA's), (Start: 42 @130057 has 11 MA's), (52, 130204), (53, 130213), (56, 130240), (57, 130243), (65, 130282), (89, 130426), (101, 130510), (110, 130585), (114, 130606), (116, 130636), (124, 130693), (130, 130717), (134, 130729),

Gene: Norm_243 Start: 135174, Stop: 135890, Start Num: 31

Candidate Starts for Norm_243:

(Start: 30 @135168 has 35 MA's), (Start: 31 @135174 has 170 MA's), (Start: 42 @135207 has 11 MA's), (52, 135354), (53, 135363), (56, 135390), (57, 135393), (65, 135432), (89, 135576), (101, 135660), (110, 135735), (114, 135756), (116, 135786), (124, 135843), (130, 135867), (134, 135879),

Gene: NuevoMundo_245 Start: 135729, Stop: 136445, Start Num: 31

Candidate Starts for NuevoMundo_245:

(Start: 30 @135723 has 35 MA's), (Start: 31 @135729 has 170 MA's), (Start: 42 @135762 has 11 MA's), (52, 135909), (53, 135918), (56, 135945), (57, 135948), (65, 135987), (89, 136131), (101, 136215), (110, 136290), (114, 136311), (116, 136341), (124, 136398), (130, 136422), (134, 136434),

Gene: Ochi17_108 Start: 56280, Stop: 56978, Start Num: 28

Candidate Starts for Ochi17_108:

(Start: 23 @56262 has 1 MA's), (Start: 28 @56280 has 19 MA's), (49, 56394), (58, 56484), (71, 56562), (72, 56565), (73, 56568), (75, 56586), (97, 56700), (103, 56775),

Gene: Octobien14_120 Start: 66087, Stop: 66722, Start Num: 39

Candidate Starts for Octobien14_120:

(Start: 37 @66081 has 38 MA's), (Start: 39 @66087 has 3 MA's), (52, 66249), (56, 66270), (57, 66273), (62, 66300), (71, 66351), (95, 66462), (101, 66501), (109, 66567), (130, 66699),

Gene: Odette_19 Start: 12578, Stop: 13279, Start Num: 30

Candidate Starts for Odette_19:

(18, 12512), (Start: 30 @12578 has 35 MA's), (47, 12683), (50, 12692), (55, 12758), (73, 12863), (75, 12881), (76, 12887), (94, 12986), (97, 12995), (103, 13070), (112, 13112), (135, 13256),

Gene: OfUltron_109 Start: 56829, Stop: 57527, Start Num: 28

Candidate Starts for OfUltron_109:

(Start: 23 @56811 has 1 MA's), (Start: 28 @56829 has 19 MA's), (49, 56943), (58, 57033), (71, 57111), (72, 57114), (73, 57117), (75, 57135), (97, 57249), (103, 57324),

Gene: Oksu_106 Start: 57901, Stop: 58617, Start Num: 23

Candidate Starts for Oksu_106:

(Start: 23 @57901 has 1 MA's), (Start: 28 @57919 has 19 MA's), (49, 58033), (58, 58123), (71, 58201), (72, 58204), (73, 58207), (75, 58225), (97, 58339), (103, 58414),

Gene: Optimus_17 Start: 12679, Stop: 13380, Start Num: 30

Candidate Starts for Optimus_17:

(18, 12613), (Start: 30 @12679 has 35 MA's), (47, 12784), (50, 12793), (55, 12859), (71, 12958), (73, 12964), (75, 12982), (76, 12988), (94, 13087), (97, 13096), (103, 13171), (112, 13213), (135, 13357),

Gene: OrediggerDelux_238 Start: 135400, Stop: 136116, Start Num: 31

Candidate Starts for OrediggerDelux_238:

(Start: 30 @135394 has 35 MA's), (Start: 31 @135400 has 170 MA's), (Start: 42 @135433 has 11 MA's), (52, 135580), (53, 135589), (56, 135616), (57, 135619), (65, 135658), (89, 135802), (101, 135886), (110, 135961), (114, 135982), (116, 136012), (124, 136069), (130, 136093), (134, 136105),

Gene: PaintedDog_76 Start: 47815, Stop: 48513, Start Num: 32

Candidate Starts for PaintedDog_76:

(Start: 32 @47815 has 1 MA's), (44, 47887), (46, 47896), (56, 48010), (60, 48034), (80, 48148), (92, 48196), (103, 48307),

Gene: ParkTD_242 Start: 134744, Stop: 135460, Start Num: 31

Candidate Starts for ParkTD_242:

(Start: 30 @134738 has 35 MA's), (Start: 31 @134744 has 170 MA's), (Start: 42 @134777 has 11 MA's), (52, 134924), (53, 134933), (56, 134960), (57, 134963), (65, 135002), (89, 135146), (101, 135230), (110, 135305), (114, 135326), (116, 135356), (124, 135413), (130, 135437), (134, 135449),

Gene: Patter_245 Start: 134473, Stop: 135189, Start Num: 31

Candidate Starts for Patter_245:

(Start: 30 @134467 has 35 MA's), (Start: 31 @134473 has 170 MA's), (Start: 42 @134506 has 11 MA's), (52, 134653), (53, 134662), (56, 134689), (57, 134692), (65, 134731), (89, 134875), (101, 134959), (110, 135034), (114, 135055), (116, 135085), (124, 135142), (130, 135166), (134, 135178),

Gene: PauloDiaboli_180 Start: 97497, Stop: 98198, Start Num: 34

Candidate Starts for PauloDiaboli_180:

(Start: 32 @97494 has 1 MA's), (Start: 34 @97497 has 3 MA's), (49, 97602), (63, 97728), (72, 97779), (75, 97800), (91, 97875), (99, 97923), (104, 97989), (107, 97998), (109, 98007), (117, 98076), (131, 98169),

Gene: Phabba_245 Start: 136373, Stop: 137080, Start Num: 27

Candidate Starts for Phabba_245:

(19, 136322), (Start: 27 @136373 has 1 MA's), (44, 136454), (49, 136493), (54, 136556), (56, 136580), (60, 136604), (62, 136610), (70, 136655), (72, 136667), (73, 136670), (92, 136763), (97, 136799), (103, 136874), (113, 136925), (136, 137066),

Gene: PharkleMinkus_245 Start: 133417, Stop: 134133, Start Num: 31

Candidate Starts for PharkleMinkus_245:

(Start: 30 @133411 has 35 MA's), (Start: 31 @133417 has 170 MA's), (Start: 42 @133450 has 11 MA's), (52, 133597), (53, 133606), (56, 133633), (57, 133636), (65, 133675), (89, 133819), (101, 133903), (110, 133978), (114, 133999), (116, 134029), (124, 134086), (130, 134110), (134, 134122),

Gene: Phlegm_248 Start: 135150, Stop: 135866, Start Num: 31

Candidate Starts for Phlegm_248:

(Start: 30 @135144 has 35 MA's), (Start: 31 @135150 has 170 MA's), (Start: 42 @135183 has 11 MA's), (52, 135330), (53, 135339), (56, 135366), (57, 135369), (65, 135408), (89, 135552), (101, 135636), (110, 135711), (114, 135732), (116, 135762), (124, 135819), (130, 135843), (134, 135855),

Gene: Phoebus_20 Start: 13326, Stop: 14027, Start Num: 30

Candidate Starts for Phoebus_20:

(18, 13260), (Start: 30 @13326 has 35 MA's), (47, 13431), (50, 13440), (55, 13506), (71, 13605), (73, 13611), (75, 13629), (76, 13635), (94, 13734), (97, 13743), (103, 13818), (112, 13860), (135, 14004),

Gene: Phox_244 Start: 134399, Stop: 135115, Start Num: 31

Candidate Starts for Phox_244:

(Start: 30 @134393 has 35 MA's), (Start: 31 @134399 has 170 MA's), (Start: 42 @134432 has 11 MA's), (52, 134579), (53, 134588), (56, 134615), (57, 134618), (65, 134657), (89, 134801), (101, 134885), (110, 134960), (114, 134981), (116, 135011), (124, 135068), (130, 135092), (134, 135104),

Gene: Phrappuccino_143 Start: 100434, Stop: 101129, Start Num: 39

Candidate Starts for Phrappuccino_143:

(4, 99846), (5, 99909), (11, 100098), (Start: 28 @100404 has 19 MA's), (Start: 37 @100428 has 38 MA's), (Start: 39 @100434 has 3 MA's), (49, 100536), (67, 100680), (71, 100701), (72, 100704), (73, 100707), (75, 100725), (83, 100776), (94, 100836), (97, 100845), (102, 100890), (111, 100962), (127, 101088),

Gene: Phrappuccino_144 Start: 101126, Stop: 101848, Start Num: 25

Candidate Starts for Phrappuccino_144:

(Start: 25 @101126 has 2 MA's), (26, 101138), (62, 101381), (66, 101408), (91, 101540), (94, 101573), (96, 101579), (97, 101582), (129, 101825),

Gene: Phusco_242 Start: 133982, Stop: 134698, Start Num: 31

Candidate Starts for Phusco_242:

(Start: 30 @133976 has 35 MA's), (Start: 31 @133982 has 170 MA's), (Start: 42 @134015 has 11 MA's), (52, 134162), (53, 134171), (56, 134198), (57, 134201), (65, 134240), (89, 134384), (101, 134468), (110, 134543), (114, 134564), (116, 134594), (124, 134651), (130, 134675), (134, 134687),

Gene: Pier_242 Start: 135275, Stop: 135991, Start Num: 31

Candidate Starts for Pier_242:

(Start: 30 @135269 has 35 MA's), (Start: 31 @135275 has 170 MA's), (Start: 42 @135308 has 11 MA's), (52, 135455), (53, 135464), (56, 135491), (57, 135494), (65, 135533), (89, 135677), (101, 135761), (110, 135836), (114, 135857), (116, 135887), (124, 135944), (130, 135968), (134, 135980),

Gene: Pinkcreek_223 Start: 131816, Stop: 132526, Start Num: 31

Candidate Starts for Pinkcreek_223:

(Start: 31 @131816 has 170 MA's), (52, 131996), (53, 132005), (56, 132032), (57, 132035), (64, 132071), (65, 132074), (86, 132215), (101, 132299), (110, 132374), (119, 132446), (124, 132482), (130, 132506), (133, 132515),

Gene: Pio_250 Start: 136478, Stop: 137194, Start Num: 31

Candidate Starts for Pio_250:

(Start: 30 @136472 has 35 MA's), (Start: 31 @136478 has 170 MA's), (Start: 42 @136511 has 11 MA's), (52, 136658), (53, 136667), (56, 136694), (57, 136697), (65, 136736), (89, 136880), (101, 136964), (110, 137039), (114, 137060), (116, 137090), (124, 137147), (130, 137171), (134, 137183),

Gene: Pivoine_244 Start: 134447, Stop: 135163, Start Num: 31

Candidate Starts for Pivoine_244:

(Start: 30 @134441 has 35 MA's), (Start: 31 @134447 has 170 MA's), (Start: 42 @134480 has 11 MA's), (52, 134627), (53, 134636), (56, 134663), (57, 134666), (65, 134705), (89, 134849), (101, 134933), (110, 135008), (114, 135029), (116, 135059), (124, 135116), (130, 135140), (134, 135152),

Gene: Pleione_247 Start: 135210, Stop: 135926, Start Num: 31

Candidate Starts for Pleione_247:

(Start: 30 @135204 has 35 MA's), (Start: 31 @135210 has 170 MA's), (Start: 42 @135243 has 11 MA's), (52, 135390), (53, 135399), (56, 135426), (57, 135429), (65, 135468), (89, 135612), (101, 135696), (110, 135771), (114, 135792), (116, 135822), (124, 135879), (130, 135903), (134, 135915),

Gene: Poise_87 Start: 46008, Stop: 46736, Start Num: 29

Candidate Starts for Poise_87:

(Start: 29 @46008 has 19 MA's), (Start: 41 @46023 has 2 MA's), (43, 46068), (48, 46119), (49, 46122), (52, 46185), (56, 46221), (60, 46245), (63, 46260), (67, 46287), (72, 46311), (90, 46398), (91, 46407), (96, 46440), (103, 46518), (108, 46536), (112, 46560), (136, 46722),

Gene: Porcelain_17 Start: 10818, Stop: 11519, Start Num: 30

Candidate Starts for Porcelain_17:

(16, 10683), (Start: 30 @10818 has 35 MA's), (55, 10998), (75, 11121), (80, 11151), (103, 11310), (115, 11382), (125, 11457), (138, 11511),

Gene: Pound_20 Start: 13414, Stop: 14115, Start Num: 30

Candidate Starts for Pound_20:

(18, 13348), (Start: 30 @13414 has 35 MA's), (47, 13519), (50, 13528), (55, 13594), (71, 13693), (73, 13699), (75, 13717), (76, 13723), (94, 13822), (97, 13831), (103, 13906), (112, 13948), (135, 14092),

Gene: Primadonna_237 Start: 134110, Stop: 134826, Start Num: 31

Candidate Starts for Primadonna_237:

(Start: 30 @134104 has 35 MA's), (Start: 31 @134110 has 170 MA's), (Start: 42 @134143 has 11 MA's), (52, 134290), (53, 134299), (56, 134326), (57, 134329), (65, 134368), (89, 134512), (101, 134596), (110, 134671), (114, 134692), (116, 134722), (124, 134779), (130, 134803), (134, 134815),

Gene: Pringar_83 Start: 45933, Stop: 46661, Start Num: 29

Candidate Starts for Pringar_83:

(Start: 29 @45933 has 19 MA's), (Start: 41 @45948 has 2 MA's), (43, 45993), (48, 46044), (49, 46047), (52, 46110), (56, 46146), (60, 46170), (63, 46185), (67, 46212), (72, 46236), (84, 46311), (90, 46323), (91, 46332), (96, 46365), (103, 46443), (108, 46461), (112, 46485), (136, 46647),

Gene: Pupusa_246 Start: 135774, Stop: 136490, Start Num: 31

Candidate Starts for Pupusa_246:

(Start: 30 @135768 has 35 MA's), (Start: 31 @135774 has 170 MA's), (Start: 42 @135807 has 11 MA's), (52, 135954), (53, 135963), (56, 135990), (57, 135993), (65, 136032), (89, 136176), (101, 136260), (110, 136335), (114, 136356), (116, 136386), (124, 136443), (130, 136467), (134, 136479),

Gene: PurduePete_243 Start: 135475, Stop: 136191, Start Num: 31

Candidate Starts for PurduePete_243:

(Start: 30 @135469 has 35 MA's), (Start: 31 @135475 has 170 MA's), (Start: 42 @135508 has 11 MA's), (52, 135655), (53, 135664), (56, 135691), (57, 135694), (65, 135733), (89, 135877), (101, 135961), (110, 136036), (114, 136057), (116, 136087), (124, 136144), (130, 136168), (134, 136180),

Gene: QBert_235 Start: 132798, Stop: 133514, Start Num: 31

Candidate Starts for QBert_235:

(Start: 30 @132792 has 35 MA's), (Start: 31 @132798 has 170 MA's), (Start: 42 @132831 has 11 MA's), (52, 132978), (53, 132987), (56, 133014), (57, 133017), (65, 133056), (89, 133200), (101, 133284), (110, 133359), (114, 133380), (116, 133410), (124, 133467), (130, 133491), (134, 133503),

Gene: Quantum_72 Start: 54211, Stop: 53504, Start Num: 38

Candidate Starts for Quantum_72:

(Start: 38 @54211 has 9 MA's), (45, 54142), (49, 54106), (56, 54025), (58, 54019), (68, 53965), (73, 53941), (74, 53926), (76, 53917), (81, 53881), (97, 53800), (98, 53797), (100, 53785), (105, 53719), (109, 53704), (121, 53593), (137, 53509),

Gene: Quasimodo_246 Start: 134783, Stop: 135499, Start Num: 31

Candidate Starts for Quasimodo_246:

(Start: 30 @134777 has 35 MA's), (Start: 31 @134783 has 170 MA's), (Start: 42 @134816 has 11 MA's), (52, 134963), (53, 134972), (56, 134999), (57, 135002), (65, 135041), (89, 135185), (101, 135269), (110, 135344), (114, 135365), (116, 135395), (124, 135452), (130, 135476), (134, 135488),

Gene: Rabbitrun_124 Start: 70287, Stop: 70925, Start Num: 37

Candidate Starts for Rabbitrun_124:

(35, 70281), (Start: 37 @70287 has 38 MA's), (52, 70455), (68, 70542), (71, 70557), (82, 70602), (93, 70656), (95, 70668), (96, 70671), (101, 70707), (105, 70758), (106, 70761), (109, 70773), (110, 70782), (111, 70791), (113, 70800), (118, 70836), (128, 70902), (130, 70905), (133, 70914),

Gene: Rabinovish_236 Start: 133491, Stop: 134201, Start Num: 31

Candidate Starts for Rabinovish_236:

(Start: 31 @133491 has 170 MA's), (52, 133671), (53, 133680), (56, 133707), (57, 133710), (64, 133746), (65, 133749), (86, 133890), (101, 133974), (110, 134049), (119, 134121), (124, 134157), (130, 134181), (133, 134190),

Gene: Raela_88 Start: 46559, Stop: 47287, Start Num: 29

Candidate Starts for Raela_88:

(Start: 29 @46559 has 19 MA's), (Start: 41 @46574 has 2 MA's), (43, 46619), (48, 46670), (49, 46673), (52, 46736), (56, 46772), (60, 46796), (63, 46811), (67, 46838), (72, 46862), (90, 46949), (91, 46958), (96, 46991), (103, 47069), (108, 47087), (112, 47111), (136, 47273),

Gene: Rahel_245 Start: 134885, Stop: 135601, Start Num: 31

Candidate Starts for Rahel_245:

(Start: 30 @134879 has 35 MA's), (Start: 31 @134885 has 170 MA's), (Start: 42 @134918 has 11 MA's), (52, 135065), (53, 135074), (56, 135101), (57, 135104), (65, 135143), (89, 135287), (101, 135371), (110, 135446), (114, 135467), (116, 135497), (124, 135554), (130, 135578), (134, 135590),

Gene: RedRaider77_86 Start: 45953, Stop: 46681, Start Num: 29

Candidate Starts for RedRaider77_86:

(Start: 29 @45953 has 19 MA's), (Start: 41 @45968 has 2 MA's), (43, 46013), (48, 46064), (49, 46067), (52, 46130), (56, 46166), (60, 46190), (63, 46205), (67, 46232), (72, 46256), (90, 46343), (91, 46352), (96, 46385), (103, 46463), (108, 46481), (112, 46505), (136, 46667),

Gene: Redno2_19 Start: 12806, Stop: 13507, Start Num: 30

Candidate Starts for Redno2_19:

(18, 12740), (Start: 30 @12806 has 35 MA's), (47, 12911), (50, 12920), (55, 12986), (73, 13091), (75, 13109), (76, 13115), (94, 13214), (97, 13223), (103, 13298), (112, 13340), (135, 13484),

Gene: Rizal_232 Start: 132733, Stop: 133416, Start Num: 42

Candidate Starts for Rizal_232:

(Start: 30 @132694 has 35 MA's), (Start: 31 @132700 has 170 MA's), (Start: 42 @132733 has 11 MA's), (52, 132880), (53, 132889), (56, 132916), (57, 132919), (65, 132958), (89, 133102), (101, 133186), (110, 133261), (114, 133282), (116, 133312), (124, 133369), (130, 133393), (134, 133405),

Gene: RoMag_238 Start: 134481, Stop: 135197, Start Num: 31

Candidate Starts for RoMag_238:

(Start: 30 @134475 has 35 MA's), (Start: 31 @134481 has 170 MA's), (Start: 42 @134514 has 11 MA's), (52, 134661), (53, 134670), (56, 134697), (57, 134700), (65, 134739), (89, 134883), (101, 134967), (110, 135042), (114, 135063), (116, 135093), (124, 135150), (130, 135174), (134, 135186),

Gene: Rocha_239 Start: 134046, Stop: 134762, Start Num: 31

Candidate Starts for Rocha_239:

(Start: 30 @134040 has 35 MA's), (Start: 31 @134046 has 170 MA's), (Start: 42 @134079 has 11 MA's), (52, 134226), (53, 134235), (56, 134262), (57, 134265), (65, 134304), (89, 134448), (101, 134532), (110, 134607), (114, 134628), (116, 134658), (124, 134715), (130, 134739), (134, 134751),

Gene: Ronan_239 Start: 132882, Stop: 133589, Start Num: 31

Candidate Starts for Ronan_239:

(Start: 30 @132876 has 35 MA's), (Start: 31 @132882 has 170 MA's), (Start: 42 @132915 has 11 MA's), (52, 133062), (53, 133071), (56, 133098), (57, 133101), (65, 133140), (89, 133275), (101, 133359), (110, 133434), (114, 133455), (116, 133485), (124, 133542), (130, 133566), (134, 133578),

Gene: Roots515_246 Start: 136026, Stop: 136742, Start Num: 31

Candidate Starts for Roots515_246:

(Start: 30 @136020 has 35 MA's), (Start: 31 @136026 has 170 MA's), (Start: 42 @136059 has 11 MA's), (52, 136206), (53, 136215), (56, 136242), (57, 136245), (65, 136284), (89, 136428), (101, 136512), (110, 136587), (114, 136608), (116, 136638), (124, 136695), (130, 136719), (134, 136731),

Gene: Ryadel_38 Start: 18574, Stop: 19266, Start Num: 37

Candidate Starts for Ryadel_38:

(6, 18103), (12, 18268), (14, 18349), (15, 18367), (21, 18496), (Start: 37 @18574 has 38 MA's), (47, 18679), (56, 18769), (67, 18832), (71, 18853), (72, 18856), (75, 18877), (79, 18901), (103, 19066), (108, 19084), (112, 19108),

Gene: SVoro_238 Start: 134816, Stop: 135499, Start Num: 42

Candidate Starts for SVoro_238:

(Start: 30 @134777 has 35 MA's), (Start: 31 @134783 has 170 MA's), (Start: 42 @134816 has 11 MA's), (52, 134963), (53, 134972), (56, 134999), (57, 135002), (65, 135041), (89, 135185), (101, 135269), (110, 135344), (114, 135365), (116, 135395), (124, 135452), (130, 135476), (134, 135488),

Gene: Salacia_244 Start: 135901, Stop: 136617, Start Num: 31

Candidate Starts for Salacia_244:

(Start: 30 @135895 has 35 MA's), (Start: 31 @135901 has 170 MA's), (Start: 42 @135934 has 11 MA's), (52, 136081), (53, 136090), (56, 136117), (57, 136120), (65, 136159), (89, 136303), (101, 136387), (110, 136462), (114, 136483), (116, 136513), (124, 136570), (130, 136594), (134, 136606),

Gene: Sarkar_73 Start: 54211, Stop: 53504, Start Num: 38

Candidate Starts for Sarkar_73:

(Start: 38 @54211 has 9 MA's), (45, 54142), (49, 54106), (56, 54025), (58, 54019), (68, 53965), (73, 53941), (74, 53926), (76, 53917), (81, 53881), (97, 53800), (98, 53797), (100, 53785), (105, 53719), (109, 53704), (121, 53593), (137, 53509),

Gene: Satis_73 Start: 54207, Stop: 53500, Start Num: 38

Candidate Starts for Satis_73:

(Start: 38 @54207 has 9 MA's), (45, 54138), (49, 54102), (56, 54021), (58, 54015), (68, 53961), (73, 53937), (74, 53922), (76, 53913), (81, 53877), (97, 53796), (98, 53793), (100, 53781), (105, 53715), (109, 53700), (121, 53589), (137, 53505),

Gene: Sauce_240 Start: 134209, Stop: 134925, Start Num: 31

Candidate Starts for Sauce_240:

(Start: 30 @134203 has 35 MA's), (Start: 31 @134209 has 170 MA's), (Start: 42 @134242 has 11 MA's), (52, 134389), (53, 134398), (56, 134425), (57, 134428), (65, 134467), (89, 134611), (101, 134695), (110, 134770), (114, 134791), (116, 134821), (124, 134878), (130, 134902), (134, 134914),

Gene: Schatzie_18 Start: 12345, Stop: 13046, Start Num: 30

Candidate Starts for Schatzie_18:

(18, 12279), (Start: 30 @12345 has 35 MA's), (47, 12450), (50, 12459), (55, 12525), (71, 12624), (73, 12630), (75, 12648), (76, 12654), (94, 12753), (97, 12762), (103, 12837), (112, 12879), (135, 13023),

Gene: SchoolBus_35 Start: 17761, Stop: 18453, Start Num: 37

Candidate Starts for SchoolBus_35:

(6, 17290), (12, 17455), (14, 17536), (15, 17554), (21, 17683), (Start: 37 @17761 has 38 MA's), (47, 17866), (56, 17956), (67, 18019), (71, 18040), (72, 18043), (75, 18064), (79, 18088), (103, 18253), (108, 18271), (112, 18295), (123, 18394),

Gene: Schuy_36 Start: 17705, Stop: 18397, Start Num: 37

Candidate Starts for Schuy_36:

(12, 17399), (14, 17480), (15, 17498), (21, 17627), (Start: 37 @17705 has 38 MA's), (47, 17810), (56, 17900), (67, 17963), (71, 17984), (72, 17987), (75, 18008), (79, 18032), (103, 18197), (108, 18215), (112, 18239),

Gene: ScottMcG_235 Start: 133479, Stop: 134195, Start Num: 31

Candidate Starts for ScottMcG_235:

(Start: 30 @133473 has 35 MA's), (Start: 31 @133479 has 170 MA's), (Start: 42 @133512 has 11 MA's), (52, 133659), (53, 133668), (56, 133695), (57, 133698), (65, 133737), (89, 133881), (101, 133965), (110, 134040), (114, 134061), (116, 134091), (124, 134148), (130, 134172), (134, 134184),

Gene: Seabastian_109 Start: 56830, Stop: 57528, Start Num: 28

Candidate Starts for Seabastian_109:

(Start: 23 @56812 has 1 MA's), (Start: 28 @56830 has 19 MA's), (49, 56944), (58, 57034), (71, 57112), (72, 57115), (73, 57118), (75, 57136), (97, 57250), (103, 57325),

Gene: Sebata_243 Start: 135184, Stop: 135894, Start Num: 31

Candidate Starts for Sebata_243:

(Start: 31 @135184 has 170 MA's), (Start: 42 @135217 has 11 MA's), (52, 135364), (53, 135373), (56, 135400), (57, 135403), (64, 135439), (65, 135442), (86, 135583), (101, 135667), (110, 135742), (114, 135763), (116, 135793), (124, 135850), (130, 135874), (133, 135883),

Gene: Sephiroth_121 Start: 67329, Stop: 67958, Start Num: 41

Candidate Starts for Sephiroth_121:

(36, 67314), (Start: 41 @67329 has 2 MA's), (56, 67506), (57, 67509), (59, 67515), (71, 67587), (85, 67647), (95, 67698), (101, 67737), (109, 67803), (130, 67935),

Gene: Settecandela_144 Start: 101126, Stop: 101848, Start Num: 25

Candidate Starts for Settecandela_144:

(Start: 25 @101126 has 2 MA's), (26, 101138), (62, 101381), (66, 101408), (91, 101540), (94, 101573), (96, 101579), (97, 101582), (129, 101825),

Gene: Settecandela_143 Start: 100434, Stop: 101129, Start Num: 39

Candidate Starts for Settecandela_143:

(4, 99846), (5, 99909), (11, 100098), (Start: 28 @100404 has 19 MA's), (Start: 37 @100428 has 38 MA's), (Start: 39 @100434 has 3 MA's), (49, 100536), (67, 100680), (71, 100701), (72, 100704), (73, 100707), (75, 100725), (83, 100776), (94, 100836), (97, 100845), (102, 100890), (111, 100962), (127, 101088),

Gene: Shaqnato_234 Start: 133619, Stop: 134335, Start Num: 31

Candidate Starts for Shaqnato_234:

(Start: 30 @133613 has 35 MA's), (Start: 31 @133619 has 170 MA's), (Start: 42 @133652 has 11 MA's), (52, 133799), (53, 133808), (56, 133835), (57, 133838), (65, 133877), (89, 134021), (101, 134105), (110, 134180), (114, 134201), (116, 134231), (124, 134288), (130, 134312), (134, 134324),

Gene: Shelob_244 Start: 136344, Stop: 137060, Start Num: 31

Candidate Starts for Shelob_244:

(Start: 30 @136338 has 35 MA's), (Start: 31 @136344 has 170 MA's), (Start: 42 @136377 has 11 MA's), (52, 136524), (53, 136533), (56, 136560), (57, 136563), (65, 136602), (89, 136746), (101, 136830), (110, 136905), (114, 136926), (116, 136956), (124, 137013), (130, 137037), (134, 137049),

Gene: ShiaLabeouf_241 Start: 134203, Stop: 134919, Start Num: 31

Candidate Starts for ShiaLabeouf_241:

(Start: 30 @134197 has 35 MA's), (Start: 31 @134203 has 170 MA's), (Start: 42 @134236 has 11 MA's), (52, 134383), (53, 134392), (56, 134419), (57, 134422), (65, 134461), (89, 134605), (101, 134689), (110, 134764), (114, 134785), (116, 134815), (124, 134872), (130, 134896), (134, 134908),

Gene: Shida_35 Start: 17612, Stop: 18304, Start Num: 37

Candidate Starts for Shida_35:

(6, 17141), (12, 17306), (14, 17387), (15, 17405), (21, 17534), (Start: 37 @17612 has 38 MA's), (47, 17717), (56, 17807), (67, 17870), (71, 17891), (72, 17894), (75, 17915), (79, 17939), (103, 18104), (108, 18122), (112, 18146), (123, 18245),

Gene: Shifa_220 Start: 133921, Stop: 134631, Start Num: 31

Candidate Starts for Shifa_220:

(Start: 31 @133921 has 170 MA's), (52, 134101), (53, 134110), (56, 134137), (57, 134140), (64, 134176), (65, 134179), (86, 134320), (101, 134404), (110, 134479), (119, 134551), (124, 134587), (130, 134611), (133, 134620),

Gene: Shnickers_242 Start: 134267, Stop: 134983, Start Num: 31

Candidate Starts for Shnickers_242:

(Start: 30 @134261 has 35 MA's), (Start: 31 @134267 has 170 MA's), (Start: 42 @134300 has 11 MA's), (52, 134447), (53, 134456), (56, 134483), (57, 134486), (65, 134525), (89, 134669), (101, 134753), (110, 134828), (114, 134849), (116, 134879), (124, 134936), (130, 134960), (134, 134972),

Gene: Shrimp_245 Start: 135512, Stop: 136228, Start Num: 31

Candidate Starts for Shrimp_245:

(Start: 30 @135506 has 35 MA's), (Start: 31 @135512 has 170 MA's), (Start: 42 @135545 has 11 MA's), (52, 135692), (53, 135701), (56, 135728), (57, 135731), (65, 135770), (89, 135914), (101, 135998), (110, 136073), (114, 136094), (116, 136124), (124, 136181), (130, 136205), (134, 136217),

Gene: SilverChicken_108 Start: 56035, Stop: 56730, Start Num: 28

Candidate Starts for SilverChicken_108:

(20, 55987), (Start: 23 @56017 has 1 MA's), (Start: 28 @56035 has 19 MA's), (50, 56152), (58, 56239), (69, 56302), (71, 56317), (72, 56320), (73, 56323), (75, 56341), (80, 56371), (103, 56530),

Gene: SilverDipper_248 Start: 135003, Stop: 135719, Start Num: 31

Candidate Starts for SilverDipper_248:

(Start: 30 @134997 has 35 MA's), (Start: 31 @135003 has 170 MA's), (Start: 42 @135036 has 11 MA's), (52, 135183), (53, 135192), (56, 135219), (57, 135222), (65, 135261), (89, 135405), (101, 135489), (110, 135564), (114, 135585), (116, 135615), (124, 135672), (130, 135696), (134, 135708),

Gene: SmallFry_244 Start: 134361, Stop: 135077, Start Num: 31

Candidate Starts for SmallFry_244:

(Start: 30 @134355 has 35 MA's), (Start: 31 @134361 has 170 MA's), (Start: 42 @134394 has 11 MA's), (52, 134541), (53, 134550), (56, 134577), (57, 134580), (65, 134619), (89, 134763), (101, 134847), (110, 134922), (114, 134943), (116, 134973), (124, 135030), (130, 135054), (134, 135066),

Gene: Smooch_37 Start: 18901, Stop: 19593, Start Num: 37

Candidate Starts for Smooch_37:

(12, 18595), (14, 18676), (15, 18694), (21, 18823), (Start: 37 @18901 has 38 MA's), (47, 19006), (56, 19096), (67, 19159), (71, 19180), (72, 19183), (75, 19204), (79, 19228), (103, 19393), (108, 19411), (112, 19435),

Gene: SoilZilla_236 Start: 133525, Stop: 134232, Start Num: 31

Candidate Starts for SoilZilla_236:

(Start: 30 @133519 has 35 MA's), (Start: 31 @133525 has 170 MA's), (Start: 42 @133558 has 11 MA's), (52, 133705), (53, 133714), (56, 133741), (57, 133744), (65, 133783), (89, 133918), (101, 134002), (110, 134077), (114, 134098), (116, 134128), (124, 134185), (130, 134209), (134, 134221),

Gene: Soul22_101 Start: 53405, Stop: 54103, Start Num: 28

Candidate Starts for Soul22_101:

(17, 53333), (20, 53357), (Start: 23 @53387 has 1 MA's), (Start: 28 @53405 has 19 MA's), (50, 53522), (58, 53609), (69, 53672), (71, 53687), (72, 53690), (73, 53693), (75, 53711), (80, 53741), (103, 53900),

Gene: Spec_237 Start: 134442, Stop: 135158, Start Num: 31

Candidate Starts for Spec_237:

(Start: 30 @134436 has 35 MA's), (Start: 31 @134442 has 170 MA's), (Start: 42 @134475 has 11 MA's), (52, 134622), (53, 134631), (56, 134658), (57, 134661), (65, 134700), (89, 134844), (101, 134928), (110, 135003), (114, 135024), (116, 135054), (124, 135111), (130, 135135), (134, 135147),

Gene: Specks_247 Start: 134852, Stop: 135568, Start Num: 31

Candidate Starts for Specks_247:

(Start: 30 @134846 has 35 MA's), (Start: 31 @134852 has 170 MA's), (Start: 42 @134885 has 11 MA's), (52, 135032), (53, 135041), (56, 135068), (57, 135071), (65, 135110), (89, 135254), (101, 135338), (110, 135413), (114, 135434), (116, 135464), (124, 135521), (130, 135545), (134, 135557),

Gene: Sprinklers_241 Start: 134142, Stop: 134825, Start Num: 42

Candidate Starts for Sprinklers_241:

(Start: 30 @134103 has 35 MA's), (Start: 31 @134109 has 170 MA's), (Start: 42 @134142 has 11 MA's), (52, 134289), (53, 134298), (56, 134325), (57, 134328), (65, 134367), (89, 134511), (101, 134595), (110, 134670), (114, 134691), (116, 134721), (124, 134778), (130, 134802), (134, 134814),

Gene: Spud_235 Start: 133851, Stop: 134534, Start Num: 42

Candidate Starts for Spud_235:

(Start: 30 @133812 has 35 MA's), (Start: 31 @133818 has 170 MA's), (Start: 42 @133851 has 11 MA's), (52, 133998), (53, 134007), (56, 134034), (57, 134037), (65, 134076), (89, 134220), (101, 134304), (110, 134379), (114, 134400), (116, 134430), (124, 134487), (130, 134511), (134, 134523),

Gene: SrishMeg2525_240 Start: 135007, Stop: 135723, Start Num: 31

Candidate Starts for SrishMeg2525_240:

(Start: 30 @135001 has 35 MA's), (Start: 31 @135007 has 170 MA's), (Start: 42 @135040 has 11 MA's), (52, 135187), (53, 135196), (56, 135223), (57, 135226), (65, 135265), (89, 135409), (101, 135493), (110, 135568), (114, 135589), (116, 135619), (124, 135676), (130, 135700), (134, 135712),

Gene: StephanieG_237 Start: 135004, Stop: 135720, Start Num: 31

Candidate Starts for StephanieG_237:

(Start: 30 @134998 has 35 MA's), (Start: 31 @135004 has 170 MA's), (Start: 42 @135037 has 11 MA's), (52, 135184), (53, 135193), (56, 135220), (57, 135223), (65, 135262), (89, 135406), (101, 135490), (110, 135565), (114, 135586), (116, 135616), (124, 135673), (130, 135697), (134, 135709),

Gene: Stubby_226 Start: 132001, Stop: 132711, Start Num: 31

Candidate Starts for Stubby_226:

(Start: 31 @132001 has 170 MA's), (52, 132181), (53, 132190), (56, 132217), (57, 132220), (64, 132256), (65, 132259), (86, 132400), (101, 132484), (110, 132559), (119, 132631), (124, 132667), (130, 132691), (133, 132700),

Gene: StubbySaigey_249 Start: 134537, Stop: 135253, Start Num: 31

Candidate Starts for StubbySaigey_249:

(Start: 30 @134531 has 35 MA's), (Start: 31 @134537 has 170 MA's), (Start: 42 @134570 has 11 MA's), (52, 134717), (53, 134726), (56, 134753), (57, 134756), (65, 134795), (89, 134939), (101, 135023), (110, 135098), (114, 135119), (116, 135149), (124, 135206), (130, 135230), (134, 135242),

Gene: Substance289_239 Start: 134409, Stop: 135125, Start Num: 31

Candidate Starts for Substance289_239:

(Start: 30 @134403 has 35 MA's), (Start: 31 @134409 has 170 MA's), (Start: 42 @134442 has 11 MA's), (52, 134589), (53, 134598), (56, 134625), (57, 134628), (65, 134667), (89, 134811), (101, 134895), (110, 134970), (114, 134991), (116, 135021), (124, 135078), (130, 135102), (134, 135114),

Gene: Superphikiman_17 Start: 10999, Stop: 11700, Start Num: 30

Candidate Starts for Superphikiman_17:

(16, 10864), (Start: 30 @10999 has 35 MA's), (55, 11179), (75, 11302), (80, 11332), (103, 11491), (115, 11563), (125, 11638), (138, 11692),

Gene: Syleon_126 Start: 68092, Stop: 68724, Start Num: 40

Candidate Starts for Syleon_126:

(Start: 40 @68092 has 1 MA's), (52, 68251), (56, 68272), (57, 68275), (71, 68353), (85, 68413), (95, 68464), (101, 68503), (109, 68569), (130, 68701),

Gene: Tainan_243 Start: 133993, Stop: 134709, Start Num: 31

Candidate Starts for Tainan_243:

(Start: 30 @133987 has 35 MA's), (Start: 31 @133993 has 170 MA's), (Start: 42 @134026 has 11 MA's), (52, 134173), (53, 134182), (56, 134209), (57, 134212), (65, 134251), (89, 134395), (101, 134479), (110, 134554), (114, 134575), (116, 134605), (124, 134662), (130, 134686), (134, 134698),

Gene: Teardrop_241 Start: 133864, Stop: 134580, Start Num: 31

Candidate Starts for Teardrop_241:

(Start: 30 @133858 has 35 MA's), (Start: 31 @133864 has 170 MA's), (Start: 42 @133897 has 11 MA's), (52, 134044), (53, 134053), (56, 134080), (57, 134083), (65, 134122), (89, 134266), (101, 134350), (110, 134425), (114, 134446), (116, 134476), (124, 134533), (130, 134557), (134, 134569),

Gene: TelAviv_32 Start: 17755, Stop: 18447, Start Num: 37

Candidate Starts for TelAviv_32:

(6, 17284), (12, 17449), (14, 17530), (15, 17548), (21, 17677), (Start: 37 @17755 has 38 MA's), (47, 17860), (56, 17950), (67, 18013), (71, 18034), (72, 18037), (75, 18058), (79, 18082), (103, 18247), (108, 18265), (112, 18289), (123, 18388),

Gene: Tesla_82 Start: 45802, Stop: 46530, Start Num: 29

Candidate Starts for Tesla_82:

(Start: 29 @45802 has 19 MA's), (Start: 41 @45817 has 2 MA's), (43, 45862), (48, 45913), (49, 45916), (52, 45979), (56, 46015), (60, 46039), (63, 46054), (67, 46081), (72, 46105), (90, 46192), (91, 46201), (96, 46234), (103, 46312), (108, 46330), (112, 46354), (136, 46516),

Gene: ThetaBob_104 Start: 54869, Stop: 55582, Start Num: 23

Candidate Starts for ThetaBob_104:

(Start: 23 @54869 has 1 MA's), (Start: 28 @54887 has 19 MA's), (58, 55091), (71, 55169), (72, 55172), (75, 55193), (97, 55307), (103, 55382),

Gene: Thibault_16 Start: 12606, Stop: 13307, Start Num: 30

Candidate Starts for Thibault_16:

(18, 12540), (Start: 30 @12606 has 35 MA's), (47, 12711), (50, 12720), (55, 12786), (73, 12891), (75, 12909), (76, 12915), (94, 13014), (97, 13023), (103, 13098), (112, 13140), (135, 13284),

Gene: ThreeRngTarjay_19 Start: 13170, Stop: 13871, Start Num: 30

Candidate Starts for ThreeRngTarjay_19:

(18, 13104), (Start: 30 @13170 has 35 MA's), (47, 13275), (50, 13284), (55, 13350), (71, 13449), (73, 13455), (75, 13473), (76, 13479), (94, 13578), (97, 13587), (103, 13662), (112, 13704), (135, 13848),

Gene: TinyTim_241 Start: 133831, Stop: 134547, Start Num: 31

Candidate Starts for TinyTim_241:

(Start: 30 @133825 has 35 MA's), (Start: 31 @133831 has 170 MA's), (Start: 42 @133864 has 11 MA's), (52, 134011), (53, 134020), (56, 134047), (57, 134050), (65, 134089), (89, 134233), (101, 134317), (110, 134392), (114, 134413), (116, 134443), (124, 134500), (130, 134524), (134, 134536),

Gene: Tonenili_265 Start: 139657, Stop: 140373, Start Num: 31

Candidate Starts for Tonenili_265:

(Start: 30 @139651 has 35 MA's), (Start: 31 @139657 has 170 MA's), (Start: 42 @139690 has 11 MA's), (52, 139837), (53, 139846), (56, 139873), (57, 139876), (65, 139915), (89, 140059), (101, 140143), (110, 140218), (114, 140239), (116, 140269), (124, 140326), (130, 140350), (134, 140362),

Gene: Toron_105 Start: 57494, Stop: 58192, Start Num: 28

Candidate Starts for Toron_105:

(Start: 23 @57476 has 1 MA's), (Start: 28 @57494 has 19 MA's), (48, 57605), (49, 57608), (72, 57779), (75, 57800), (103, 57989),

Gene: Tortoise16_241 Start: 134293, Stop: 135009, Start Num: 31

Candidate Starts for Tortoise16_241:

(Start: 30 @134287 has 35 MA's), (Start: 31 @134293 has 170 MA's), (Start: 42 @134326 has 11 MA's), (52, 134473), (53, 134482), (56, 134509), (57, 134512), (65, 134551), (89, 134695), (101, 134779), (110, 134854), (114, 134875), (116, 134905), (124, 134962), (130, 134986), (134, 134998),

Gene: Trax_123 Start: 69496, Stop: 70134, Start Num: 37

Candidate Starts for Trax_123:

(22, 69421), (24, 69445), (33, 69484), (Start: 37 @69496 has 38 MA's), (52, 69664), (68, 69751), (71, 69766), (82, 69811), (93, 69865), (95, 69877), (96, 69880), (101, 69916), (105, 69967), (110, 69991), (111, 70000), (113, 70009), (118, 70045), (122, 70081), (126, 70096), (128, 70111), (130, 70114), (133, 70123),

Gene: Trinitium_239 Start: 132585, Stop: 133301, Start Num: 31

Candidate Starts for Trinitium_239:

(Start: 30 @132579 has 35 MA's), (Start: 31 @132585 has 170 MA's), (Start: 42 @132618 has 11 MA's), (52, 132765), (53, 132774), (56, 132801), (57, 132804), (65, 132843), (89, 132987), (101, 133071), (110, 133146), (114, 133167), (116, 133197), (124, 133254), (130, 133278), (134, 133290),

Gene: Turret_234 Start: 132167, Stop: 132883, Start Num: 31

Candidate Starts for Turret_234:

(Start: 30 @132161 has 35 MA's), (Start: 31 @132167 has 170 MA's), (Start: 42 @132200 has 11 MA's), (52, 132347), (53, 132356), (56, 132383), (57, 132386), (65, 132425), (89, 132569), (101, 132653), (110, 132728), (114, 132749), (116, 132779), (124, 132836), (130, 132860), (134, 132872),

Gene: Tyke_240 Start: 136485, Stop: 137201, Start Num: 31

Candidate Starts for Tyke_240:

(Start: 30 @136479 has 35 MA's), (Start: 31 @136485 has 170 MA's), (Start: 42 @136518 has 11 MA's), (52, 136665), (53, 136674), (56, 136701), (57, 136704), (65, 136743), (89, 136887), (101, 136971), (110, 137046), (114, 137067), (116, 137097), (124, 137154), (130, 137178), (134, 137190),

Gene: Vagabond_35 Start: 17588, Stop: 18280, Start Num: 37

Candidate Starts for Vagabond_35:

(6, 17117), (12, 17282), (14, 17363), (15, 17381), (21, 17510), (Start: 37 @17588 has 38 MA's), (47, 17693), (56, 17783), (67, 17846), (71, 17867), (72, 17870), (75, 17891), (79, 17915), (103, 18080), (108, 18098), (112, 18122), (123, 18221),

Gene: ValleyTerrace_244 Start: 133744, Stop: 134460, Start Num: 31

Candidate Starts for ValleyTerrace_244:

(Start: 30 @133738 has 35 MA's), (Start: 31 @133744 has 170 MA's), (Start: 42 @133777 has 11 MA's), (52, 133924), (53, 133933), (56, 133960), (57, 133963), (65, 134002), (89, 134146), (101, 134230), (110, 134305), (114, 134326), (116, 134356), (124, 134413), (130, 134437), (134, 134449),

Gene: VasuNzinga_84 Start: 45891, Stop: 46619, Start Num: 29

Candidate Starts for VasuNzinga_84:

(Start: 29 @45891 has 19 MA's), (Start: 41 @45906 has 2 MA's), (43, 45951), (48, 46002), (49, 46005), (52, 46068), (56, 46104), (60, 46128), (63, 46143), (67, 46170), (72, 46194), (90, 46281), (91, 46290), (96, 46323), (103, 46401), (108, 46419), (112, 46443), (136, 46605),

Gene: Vorrps_34 Start: 17358, Stop: 18050, Start Num: 37

Candidate Starts for Vorrps_34:

(12, 17052), (14, 17133), (15, 17151), (21, 17280), (Start: 37 @17358 has 38 MA's), (47, 17463), (56, 17553), (67, 17616), (71, 17637), (72, 17640), (75, 17661), (79, 17685), (103, 17850), (108, 17868), (112, 17892),

Gene: Vortrix_261 Start: 138444, Stop: 139160, Start Num: 31

Candidate Starts for Vortrix_261:

(Start: 30 @138438 has 35 MA's), (Start: 31 @138444 has 170 MA's), (Start: 42 @138477 has 11 MA's), (52, 138624), (53, 138633), (56, 138660), (57, 138663), (65, 138702), (89, 138846), (101, 138930), (110, 139005), (114, 139026), (116, 139056), (124, 139113), (130, 139137), (134, 139149),

Gene: Wally_241 Start: 133728, Stop: 134444, Start Num: 31

Candidate Starts for Wally_241:

(Start: 30 @133722 has 35 MA's), (Start: 31 @133728 has 170 MA's), (Start: 42 @133761 has 11 MA's), (52, 133908), (53, 133917), (56, 133944), (57, 133947), (65, 133986), (89, 134130), (101, 134214), (110, 134289), (114, 134310), (116, 134340), (124, 134397), (130, 134421), (134, 134433),

Gene: Wanda_20 Start: 12613, Stop: 13314, Start Num: 30

Candidate Starts for Wanda_20:

(18, 12547), (Start: 30 @12613 has 35 MA's), (47, 12718), (50, 12727), (55, 12793), (73, 12898), (75, 12916), (76, 12922), (94, 13021), (97, 13030), (103, 13105), (112, 13147), (135, 13291),

Gene: Wildflower_35 Start: 17344, Stop: 18036, Start Num: 37

Candidate Starts for Wildflower_35:

(12, 17038), (14, 17119), (15, 17137), (21, 17266), (Start: 37 @17344 has 38 MA's), (47, 17449), (56, 17539), (67, 17602), (71, 17623), (72, 17626), (75, 17647), (79, 17671), (103, 17836), (108, 17854), (112, 17878),

Gene: WillSterrel_100 Start: 55820, Stop: 56518, Start Num: 28

Candidate Starts for WillSterrel_100:

(Start: 23 @55802 has 1 MA's), (Start: 28 @55820 has 19 MA's), (50, 55937), (58, 56024), (71, 56102), (72, 56105), (73, 56108), (75, 56126), (97, 56240), (103, 56315),

Gene: Willis_244 Start: 134667, Stop: 135383, Start Num: 31

Candidate Starts for Willis_244:

(Start: 30 @134661 has 35 MA's), (Start: 31 @134667 has 170 MA's), (Start: 42 @134700 has 11 MA's), (52, 134847), (53, 134856), (56, 134883), (57, 134886), (65, 134925), (89, 135069), (101, 135153), (110, 135228), (114, 135249), (116, 135279), (124, 135336), (130, 135360), (134, 135372),

Gene: Winget_36 Start: 18027, Stop: 18719, Start Num: 37

Candidate Starts for Winget_36:

(6, 17556), (12, 17721), (14, 17802), (15, 17820), (21, 17949), (Start: 37 @18027 has 38 MA's), (47, 18132), (56, 18222), (67, 18285), (71, 18306), (72, 18309), (75, 18330), (79, 18354), (103, 18519), (108, 18537), (112, 18561), (123, 18660),

Gene: Wogge42_34 Start: 17666, Stop: 18358, Start Num: 37

Candidate Starts for Wogge42_34:

(21, 17588), (Start: 37 @17666 has 38 MA's), (47, 17771), (56, 17861), (67, 17924), (71, 17945), (72, 17948), (75, 17969), (79, 17993), (103, 18158), (108, 18176), (112, 18200),

Gene: Xiaokay_17 Start: 12622, Stop: 13323, Start Num: 30

Candidate Starts for Xiaokay_17:

(18, 12556), (Start: 30 @12622 has 35 MA's), (47, 12727), (50, 12736), (55, 12802), (71, 12901), (73, 12907), (75, 12925), (76, 12931), (94, 13030), (97, 13039), (103, 13114), (112, 13156), (135, 13300),

Gene: Yassified_239 Start: 133883, Stop: 134590, Start Num: 31

Candidate Starts for Yassified_239:

(Start: 30 @133877 has 35 MA's), (Start: 31 @133883 has 170 MA's), (Start: 42 @133916 has 11 MA's), (52, 134063), (53, 134072), (56, 134099), (57, 134102), (65, 134141), (89, 134276), (101, 134360), (110, 134435), (114, 134456), (116, 134486), (124, 134543), (130, 134567), (134, 134579),

Gene: Yeet_18 Start: 12345, Stop: 13046, Start Num: 30

Candidate Starts for Yeet_18:

(18, 12279), (Start: 30 @12345 has 35 MA's), (47, 12450), (50, 12459), (55, 12525), (73, 12630), (75, 12648), (76, 12654), (94, 12753), (97, 12762), (103, 12837), (112, 12879), (135, 13023),

Gene: YemiJoy2021_244 Start: 135398, Stop: 136114, Start Num: 31

Candidate Starts for YemiJoy2021_244:

(Start: 30 @135392 has 35 MA's), (Start: 31 @135398 has 170 MA's), (Start: 42 @135431 has 11 MA's), (52, 135578), (53, 135587), (56, 135614), (57, 135617), (65, 135656), (89, 135800), (101, 135884), (110, 135959), (114, 135980), (116, 136010), (124, 136067), (130, 136091), (134, 136103),

Gene: Yoshi_115 Start: 57309, Stop: 58004, Start Num: 28

Candidate Starts for Yoshi_115:

(17, 57237), (20, 57261), (Start: 23 @57291 has 1 MA's), (Start: 28 @57309 has 19 MA's), (50, 57426), (58, 57513), (69, 57576), (71, 57591), (72, 57594), (73, 57597), (75, 57615), (80, 57645), (103, 57804),

Gene: YoungMoneyMata_243 Start: 134928, Stop: 135644, Start Num: 31

Candidate Starts for YoungMoneyMata_243:

(Start: 30 @134922 has 35 MA's), (Start: 31 @134928 has 170 MA's), (Start: 42 @134961 has 11 MA's), (52, 135108), (53, 135117), (56, 135144), (57, 135147), (65, 135186), (89, 135330), (101, 135414), (110, 135489), (114, 135510), (116, 135540), (124, 135597), (130, 135621), (134, 135633),

Gene: YoyoKar_33 Start: 17311, Stop: 18003, Start Num: 37

Candidate Starts for YoyoKar_33:

(6, 16840), (12, 17005), (14, 17086), (15, 17104), (21, 17233), (Start: 37 @17311 has 38 MA's), (47, 17416), (56, 17506), (67, 17569), (71, 17590), (72, 17593), (75, 17614), (79, 17638), (103, 17803), (108, 17821), (112, 17845), (123, 17944),

Gene: Yucca_243 Start: 135390, Stop: 136106, Start Num: 31

Candidate Starts for Yucca_243:

(Start: 30 @135384 has 35 MA's), (Start: 31 @135390 has 170 MA's), (Start: 42 @135423 has 11 MA's), (52, 135570), (53, 135579), (56, 135606), (57, 135609), (65, 135648), (89, 135792), (101, 135876), (110, 135951), (114, 135972), (116, 136002), (124, 136059), (130, 136083), (134, 136095),

Gene: YungJamal_38 Start: 18090, Stop: 18782, Start Num: 37

Candidate Starts for YungJamal_38:

(12, 17784), (14, 17865), (15, 17883), (21, 18012), (Start: 37 @18090 has 38 MA's), (47, 18195), (56, 18285), (61, 18312), (67, 18348), (71, 18369), (72, 18372), (75, 18393), (79, 18417), (103, 18582), (108, 18600), (112, 18624),

Gene: Zakhe101_35 Start: 17489, Stop: 18181, Start Num: 37

Candidate Starts for Zakhe101_35:

(12, 17183), (14, 17264), (15, 17282), (21, 17411), (Start: 37 @17489 has 38 MA's), (47, 17594), (56, 17684), (61, 17711), (67, 17747), (71, 17768), (72, 17771), (75, 17792), (79, 17816), (103, 17981), (108, 17999), (112, 18023), (123, 18122),

Gene: Zalkecks_242 Start: 134496, Stop: 135212, Start Num: 31

Candidate Starts for Zalkecks_242:

(Start: 30 @134490 has 35 MA's), (Start: 31 @134496 has 170 MA's), (Start: 42 @134529 has 11 MA's), (52, 134676), (53, 134685), (56, 134712), (57, 134715), (65, 134754), (89, 134898), (101, 134982), (110, 135057), (114, 135078), (116, 135108), (124, 135165), (130, 135189), (134, 135201),

Gene: Zapner_107 Start: 53897, Stop: 54595, Start Num: 28

Candidate Starts for Zapner_107:

(17, 53825), (20, 53849), (Start: 23 @53879 has 1 MA's), (Start: 28 @53897 has 19 MA's), (50, 54014), (58, 54101), (69, 54164), (71, 54179), (72, 54182), (73, 54185), (75, 54203), (80, 54233), (103, 54392),

Gene: Zebo_35 Start: 17761, Stop: 18453, Start Num: 37

Candidate Starts for Zebo_35:

(6, 17290), (12, 17455), (14, 17536), (15, 17554), (21, 17683), (Start: 37 @17761 has 38 MA's), (47, 17866), (56, 17956), (67, 18019), (71, 18040), (72, 18043), (75, 18064), (79, 18088), (103, 18253), (108, 18271), (112, 18295), (123, 18394),

Gene: Zeenon_244 Start: 135030, Stop: 135746, Start Num: 31

Candidate Starts for Zeenon_244:

(Start: 30 @135024 has 35 MA's), (Start: 31 @135030 has 170 MA's), (Start: 42 @135063 has 11 MA's), (52, 135210), (53, 135219), (56, 135246), (57, 135249), (65, 135288), (89, 135432), (101, 135516), (110, 135591), (114, 135612), (116, 135642), (124, 135699), (130, 135723), (134, 135735),

Gene: Zelink_20 Start: 13198, Stop: 13899, Start Num: 30

Candidate Starts for Zelink_20:

(18, 13132), (Start: 30 @13198 has 35 MA's), (47, 13303), (50, 13312), (55, 13378), (73, 13483), (75, 13501), (76, 13507), (94, 13606), (97, 13615), (103, 13690), (112, 13732), (135, 13876),

Gene: ZygoTaiga_239 Start: 135687, Stop: 136403, Start Num: 31

Candidate Starts for ZygoTaiga_239:

(Start: 30 @135681 has 35 MA's), (Start: 31 @135687 has 170 MA's), (Start: 42 @135720 has 11 MA's), (52, 135867), (53, 135876), (56, 135903), (57, 135906), (65, 135945), (89, 136089), (101, 136173), (110, 136248), (114, 136269), (116, 136299), (124, 136356), (130, 136380), (134, 136392),