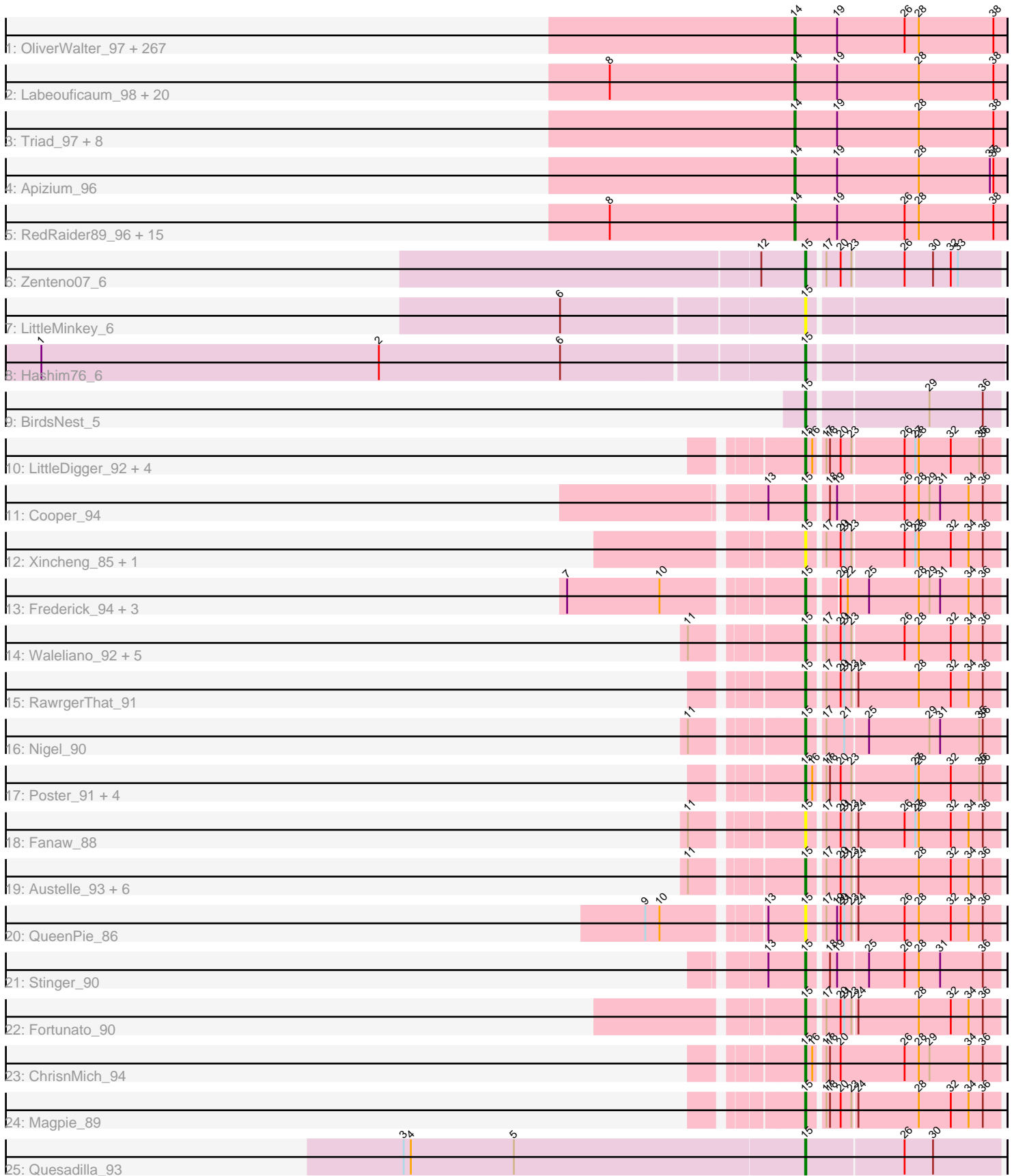


Pham 307915



Note: Tracks are now grouped by subcluster and scaled. Switching in subcluster is indicated by changes in track color. Track scale is now set by default to display the region 30 bp upstream of start 1 to 30 bp downstream of the last possible start. If this default region is judged to be packed too tightly with annotated starts, the track will be further scaled to only show that region of the ORF with annotated starts. This action will be indicated by adding "Zoomed" to the title. For starts, yellow indicates the location of called starts comprised solely of Glimmer/GeneMark auto-annotations, green indicates the location of called starts with at least 1 manual gene annotation.

Pham 307915 Report

This analysis was run 06/27/26 on database version 652.

Pham number 307915 has 358 members, 41 are drafts.

Phages represented in each track:

- Track 1 : OliverWalter_97, Placalicious_95, CampRoach_98, Chah_100, Oline_97, Lego3393_96, Pherdinand_99, PallasAthena_99, Dingo_94, BlacksBerry_98, Quisquiliae_100, Roliet_95, Flake_97, Anderson_99, Gwennie1_97, Longacauda_98, LeiMonet_101, Caspiroi_97, Riverton_96, Orwigg_99, Valjean_96, Nicole21_99, Prickles_98, Childish_98, Pipsqueak_95, DonSancho_93, Iridessa_100, Katniss_100, Matalotodo_96, Legolas_99, Tomlarah_98, Robyn_99, Fringe_102, LemonSlice_98, LuckyMarjie_95, Basato_96, Jiminy_98, Zelda_98, Banjo_94, Mana_95, Morgushi_95, Soile_99, Schadenfreude_98, Duggie_98, LasagnaCat_99, DoesntMatter_95, MrPhizzler_101, JDog_97, Colbert_96, Skippy_98, ShiVal_97, Fang_98, True_99, Zonia_98, Simielle_98, Slatt_100, Craff_99, Kikipoo_100, Sigman_97, Happabalu_96, Serpentine_00100, Riggan_99, Phunky_95, BlackStallion_97, Mecca_98, Eugenia_100, Ricotta_99, Orfeu_98, Phamished_97, Cornobble_96, Andre_102, Jesabah_102, Soto_94, Yoshand_99, Podrick_96, Beaglebox_94, Etaye_97, Kwadwo_97, Cannibal_98, Toni_97, Manad_97, FugateOSU_98, Waterdiva_99, Swiphy_100, Mesmerelda_98, FriarPreacher_95, Bluephacebaby_97, OSmaximus_98, Piglet_0097, AbsoluteMadLad_96, Squid_97, Scoot17C_98, CamL_98, Morty_98, Chuni_99, Plmatters_95, Hamish_95, QueenBeane_98, RedMaple_96, PhatLouie_100, BoogieWoogie_99, HighStump_100, Karn_97, Hartsy_96, CheetO_94, JakeO_99, Lulumae_93, Olak_100, Megamind20_100, Sophia_96, Vaticameos_95, Iridoclysis_97, Xavier_97, Lulwa_95, Chorkpop_99, Telesworld_96, Mosaic_95, Weher20_95, SassyCat97_96, Vortex_96, PG1_96, FremontTroll_98, Mutante_99, Coletti_101, Giraffe_99, Kimbrough_99, LeeLot_96, Aelin_97, PinheadLarry_97, FleetyMac_102, Murdoc_94, Aonishiki_98, Vista_97, Harvey_95, Pops_95, Olive_94, Surely_98, EmGer13_97, Suffolk_93, Held_96, Keitherie_101, OneBrain_99, Selr12_102, SallyH_101, Inverness_95, SilverBell_99, Emiris_100, Lumine_99, Jiraiya_99, ProfessorX_95, Oosterbaan_98, Inchworm_99, Badfish_98, Hetaeria_97, Hertubise_97, GeneCoco_97, Haimas_95, Phareon_95, DirtJuice_99, KlimbOn_97, Hekos_95, KLucky39_95, Frankicide_95, Fozzie_94, UncleHowie_94, EmpTee_97, Jillium_98, Altwerkus_95, Cher_98, Adriana_98, MRabcd_98, Buckeye_96, Burr_100, Struggle_98, Nacho_00100, Larson_100, Virapocalypse_99, Mulan_97, Kahve_98, Plata_96, Roy17_95, Mesh1_98, Daka_99, Chipette_95, Dice_98, KingTut_88, Nathan_97, Trypo_98, PhatCats2014_97, Kloppinator_98, Aleia_97, DoOn_101, Taraxa_98, Cosmolli16_99, HenryJackson_98, Squiggle_97, Nyala_98, Nova1_97, Gophee_97, JangoPhett_96, YouGoGlencoco_98, Carthage_98, UAch1_98, Puhltonio_93, SDcharge11_96, MitKao_98, Thunderbird_98, Durga_100, Timmi_96, JacAttac_98, Zaider_99, Pinkman_97, Virgeve_96, Wallhey_99, Phipps_95,

PhrodoBaggins_100, Vaishali24_98, Numberten_98, Bishoperium_98, Newman_93, Khan1_98, TomBombadil_98, Pacifista_100, NiaNia_99, Dione_96, Doddsville_95, Gareth_98, FluffyNinja_99, GreenChile_96, Daffy_97, Antonia_97, Thora_96, Charles1_101, Melc17_95, Spartan300_97, Samaymay_98, Lopsy_94, IsaacEli_100, Mikota_92, ShadowBud_98, Tooj_95, Freya_94, Haleema_97, Kwksand96_99, Swish_99, Scrick_99, Chute_98, LostAndPhound_97, AltPhacts_95, Grand2040_95, DaddyDaniels_101, DelRivs_97, ThreeOh3D2_99, Orion_96, ABU_96, TooFast2Furius_96, Lasso_97, Usavi_98, Maru_97, Megatron_99, Cobra_98, Rimu_97, Brilliant_101, Omniscient_99, Dati_95, HogWash_98, Serendipity_97, Potter_92

- Track 2 : Labeouficaum_98, Phleuron_95, Derpp_97, Kailash_96, Schueller_96, TyrionL_98, Gwilliam_98, Ashraf_99, Chunky_96, Maskar_99, CharlieGBrown_96, MichaelPhcott_96, Horchata_92, Veritas_97, AngelCake_98, Boehler_95, MelsMeow_96, Roscoe_96, Mag7_96, ImtiyazSitla_99, BatteryCK_96
- Track 3 : Triad_97, SirBeauregard_98, Lehmann_98, Windsor_97, HSavage_95, Gyrad_0096, Vivaldi_98, Chaelin_98, ElvisPhasley_98
- Track 4 : Apizium_96
- Track 5 : RedRaider89_96, MiniBoss_93, KingVeVeVe_96, TallGrassMM_97, Sheila_92, BlueHusk_98, PhenghisKhan_98, PhrankReynolds_96, DuchessDung_95, Crownjwl_95, Cornbread_98, Phergie_98, Hocus_97, Eremos_95, Mcshane_100, Solosis_96
- Track 6 : Zenteno07_6
- Track 7 : LittleMinkey_6
- Track 8 : Hashim76_6
- Track 9 : BirdsNest_5
- Track 10 : LittleDigger_92, Ahwei_90, Antihero_92, Epah_92, Renkei_92
- Track 11 : Cooper_94
- Track 12 : Xincheng_85, JaguarMi_87
- Track 13 : Frederick_94, BobbyK_93, Heath_87, Zemanar_91
- Track 14 : Waleliano_92, BrownCNA_93, Hangman_93, JoyceMaria_92, Mithril_91, Lolalove_95
- Track 15 : RawrgerThat_91
- Track 16 : Nigel_90
- Track 17 : Poster_91, Lambano_90, GinPorsche_94, Hally898_90, Nanao_92
- Track 18 : Fanaw_88
- Track 19 : Austelle_93, VioletZ_95, Prince_93, JAMaL_94, Mudslide_94, Apex_94, Hydro_93
- Track 20 : QueenPie_86
- Track 21 : Stinger_90
- Track 22 : Fortunato_90
- Track 23 : ChrisnMich_94
- Track 24 : Magpie_89
- Track 25 : Quesadilla_93

Summary of Final Annotations (See graph section above for start numbers):

The start number called the most often in the published annotations is 14, it was called in 287 of the 317 non-draft genes in the pham.

Genes that call this "Most Annotated" start:

• ABU_96, AbsoluteMadLad_96, Adriana_98, Aelin_97, Aleia_97, AltPhacts_95, Altwerkus_95, Anderson_99, Andre_102, AngelCake_98, Antonia_97, Aonishiki_98, Apizium_96, Ashraf_99, Badfish_98, Banjo_94, Basato_96, BatteryCK_96, Beaglebox_94, Bishoperium_98, BlackStallion_97, BlacksBerry_98, BlueHusk_98, Bluephacebaby_97, Boehler_95, BoogieWoogie_99, Brilliant_101, Buckeye_96, Burr_100, CamL_98, CampRoach_98, Cannibal_98, Carthage_98, Caspiboi_97, Chaelin_98, Chah_100, Charles1_101, CharlieGBrown_96, CheetO_94, Cher_98, Childish_98, Chipette_95, Chorkpop_99, Chuni_99, Chunky_96, Chute_98, Cobra_98, Colbert_96, Coletti_101, Cornbread_98, Cornobble_96, Cosmolli16_99, Craff_99, Crownjwl_95, DaddyDaniels_101, Daffy_97, Daka_99, Dati_95, DelRivs_97, Derpp_97, Dice_98, Dingo_94, Dione_96, DirtJuice_99, Doddsville_95, DoesntMatter_95, DolOn_101, DonSanchon_93, DuchessDung_95, Duggie_98, Durga_100, ElvisPhasley_98, EmGer13_97, Emiris_100, EmpTee_97, Eremos_95, Etaye_97, Eugenia_100, Fang_98, Flake_97, FleetyMac_102, FluffyNinja_99, Fozzie_94, Frankicide_95, FremontTroll_98, Freya_94, FriarPreacher_95, Fringe_102, FugateOSU_98, Gareth_98, GeneCoco_97, Giraffe_99, Gophee_97, Grand2040_95, GreenChile_96, Gwennie1_97, Gwilliam_98, Gyarad_0096, HSavage_95, Haimas_95, Haleema_97, Hamish_95, Happabalu_96, Hartsy_96, Harvey_95, Hekos_95, Held_96, HenryJackson_98, Hertubise_97, Hetaeria_97, HighStump_100, Hocus_97, HogWash_98, Horchata_92, IntiyazSitla_99, Inchworm_99, Inverness_95, Iridessa_100, Iridoclysis_97, IsaacEli_100, JDog_97, JacAttac_98, JakeO_99, JangoPhett_96, Jesabah_102, Jillium_98, Jiminy_98, Jiraiya_99, KLucky39_95, Kahve_98, Kailash_96, Karn_97, Katniss_100, Keitherie_101, Khan1_98, Kikipoo_100, Kimbrough_99, KingTut_88, KingVeVeVe_96, KlimbOn_97, Kloppinator_98, Kwadwo_97, Kwksand96_99, Labeouficaum_98, Larson_100, LasagnaCat_99, Lasso_97, LeeLot_96, Lego3393_96, Legolas_99, Lehmann_98, LeiMonet_101, LemonSlice_98, Longacauda_98, Lopsy_94, LostAndPhound_97, LuckyMarjie_95, Lulumae_93, Lulwa_95, Lumine_99, MRabcd_98, Mag7_96, Mana_95, Manad_97, Maru_97, Maskar_99, Matalotodo_96, Mcshane_100, Mecca_98, Megamind20_100, Megatron_99, Melc17_95, MelsMeow_96, Mesh1_98, Mesmerelda_98, MichaelPhcott_96, Mikota_92, MiniBoss_93, MitKao_98, Morgushi_95, Morty_98, Mosaic_95, MrPhizzler_101, Mulan_97, Murdoc_94, Mutante_99, Nacho_00100, Nathan_97, Newman_93, NiaNia_99, Nicole21_99, Nova1_97, Numberten_98, Nyala_98, OSmaximus_98, Olak_100, Oline_97, Olive_94, OliverWalter_97, Omniscient_99, OneBrain_99, Oosterbaan_98, Orfeu_98, Orion_96, Orwigg_99, PG1_96, Pacifista_100, PallasAthena_99, Phamished_97, Phareon_95, PhatCats2014_97, PhatLouie_100, PhenghisKhan_98, Pherdinand_99, Phergie_98, Phipps_95, Phleuron_95, PhrankReynolds_96, PhrodoBaggins_100, Phunky_95, Piglet_0097, PinheadLarry_97, Pinkman_97, Pipsqueak_95, Placalicious_95, Plata_96, Plmatters_95, Podrick_96, Pops_95, Potter_92, Prickles_98, ProfessorX_95, Puhltonio_93, QueenBeane_98, Quisquilliae_100, RedMaple_96, RedRaider89_96, Ricotta_99, Riggan_99, Rimu_97, Riverton_96, Robyn_99, Roliet_95, Roscoe_96, Roy17_95, SDcharge11_96, SallyH_101, Samaymay_98, SassyCat97_96, Schadenfreude_98, Schueller_96, Scoot17C_98, Scrick_99, Selr12_102, Serendipity_97, Serpentine_00100, ShadowBud_98, Sheila_92, ShiVal_97, Sigman_97, SilverBell_99, Simielle_98, SirBeauregard_98, Skippy_98, Slatt_100, Soile_99, Solosis_96, Sophia_96, Soto_94, Spartan300_97, Squid_97, Squiggle_97, Struggle_98, Suffolk_93, Surely_98, Swiphy_100, Swish_99, TallGrassMM_97, Taraxa_98, Telesworld_96, Thora_96, ThreeOh3D2_99, Thunderbird_98, Timmi_96, TomBombadil_98, Tomlarah_98, Toni_97, TooFast2Furius_96, Tooj_95, Triad_97, True_99, Trypo_98, TyrionL_98, UAch1_98, UncleHowie_94, Usavi_98, Vaishali24_98, Valjean_96, Vaticameos_95, Veritas_97,

Virapocalypse_99, Virgeve_96, Vista_97, Vivaldi_98, Vortex_96, Wallhey_99, Waterdiva_99, Weher20_95, Windsor_97, Xavier_97, Yoshand_99, YouGoGlencoco_98, Zaider_99, Zelda_98, Zonia_98,

Genes that have the "Most Annotated" start but do not call it:

•

Genes that do not have the "Most Annotated" start:

• Ahwei_90, Antihero_92, Apex_94, Austelle_93, BirdsNest_5, BobbyK_93, BrownCNA_93, ChrisnMich_94, Cooper_94, Epah_92, Fanaw_88, Fortunato_90, Frederick_94, GinPorsche_94, Hally898_90, Hangman_93, Hashim76_6, Heath_87, Hydro_93, JAMaL_94, JaguarMi_87, JoyceMaria_92, Lambano_90, LittleDigger_92, LittleMinkey_6, Lolalove_95, Magpie_89, Mithril_91, Mudslide_94, Nanao_92, Nigel_90, Poster_91, Prince_93, QueenPie_86, Quesadilla_93, RawrgerThat_91, Renkei_92, Stinger_90, VioletZ_95, Waleliano_92, Xincheng_85, Zemanar_91, Zenteno07_6,

Summary by start number:

Start 14:

• Found in 315 of 358 (88.0%) of genes in pham
• Manual Annotations of this start: 287 of 317
• Called 100.0% of time when present
• Phage (with cluster) where this start called: ABU_96 (B1), AbsoluteMadLad_96 (B1), Adriana_98 (B1), Aelin_97 (B1), Aleia_97 (B1), AltPhacts_95 (B1), Altwerkus_95 (B1), Anderson_99 (B1), Andre_102 (B1), AngelCake_98 (B1), Antonia_97 (B1), Aonishiki_98 (B1), Apizium_96 (B1), Ashraf_99 (B1), Badfish_98 (B1), Banjo_94 (B1), Basato_96 (B1), BatteryCK_96 (B1), Beaglebox_94 (B1), Bishoperium_98 (B1), BlackStallion_97 (B1), BlacksBerry_98 (B1), BlueHusk_98 (B1), Bluephacebaby_97 (B1), Boehler_95 (B1), BoogieWoogie_99 (B1), Brilliant_101 (B1), Buckeye_96 (B1), Burr_100 (B1), CamL_98 (B1), CampRoach_98 (B1), Cannibal_98 (B1), Carthage_98 (B1), Caspiroi_97 (B1), Chaelin_98 (B1), Chah_100 (B1), Charles1_101 (B1), CharlieGBrown_96 (B1), CheetO_94 (B1), Cher_98 (B1), Childish_98 (B1), Chipette_95 (B1), Chorkpop_99 (B1), Chuni_99 (B1), Chunky_96 (B1), Chute_98 (B1), Cobra_98 (B1), Colbert_96 (B1), Coletti_101 (B1), Cornbread_98 (B1), Cornobble_96 (B1), Cosmolli16_99 (B1), Craff_99 (B1), Crownjwl_95 (B1), DaddyDaniels_101 (B1), Daffy_97 (B1), Daka_99 (B1), Dati_95 (B1), DelRivs_97 (B1), Derpp_97 (B1), Dice_98 (B1), Dingo_94 (B1), Dione_96 (B1), DirtJuice_99 (B1), Doddsville_95 (B1), DoesntMatter_95 (B1), DolOn_101 (B1), DonSanchon_93 (B1), DuchessDung_95 (B1), Duggie_98 (B1), Durga_100 (B1), ElvisPhasley_98 (B1), EmGer13_97 (B1), Emiris_100 (B1), EmpTee_97 (B1), Eremos_95 (B1), Etaye_97 (B1), Eugenia_100 (B1), Fang_98 (B1), Flake_97 (B1), FleetyMac_102 (B1), FluffyNinja_99 (B1), Fozzie_94 (B1), Frankicide_95 (B1), FremontTroll_98 (B1), Freya_94 (B1), FriarPreacher_95 (B1), Fringe_102 (B1), FugateOSU_98 (B1), Gareth_98 (B1), GeneCoco_97 (B1), Giraffe_99 (B1), Gophee_97 (B1), Grand2040_95 (B1), GreenChile_96 (B1), Gwennie1_97 (B1), Gwilliam_98 (B1), Gyarad_0096 (B1), HSavage_95 (B1), Haimas_95 (B1), Haleema_97 (B1), Hamish_95 (B1), Happabalu_96 (B1), Hartsy_96 (B1), Harvey_95 (B1), Hekos_95 (B1), Held_96 (B1), HenryJackson_98 (B1), Hertubise_97 (B1), Hetaeria_97 (B1), HighStump_100 (B1), Hocus_97 (B1), HogWash_98 (B1), Horchata_92 (B1), ImtiyazSitla_99 (B1), Inchworm_99 (B1), Inverness_95 (B1), Iridessa_100 (B1), Iridoclysis_97 (B1), IsaacEli_100 (B1), JDog_97 (B1), JacAttac_98 (B1), JakeO_99 (B1), JangoPhett_96 (B1), Jesabah_102 (B1), Jillium_98 (B1), Jiminy_98 (B1),

Jiraiya_99 (B1), KLUcky39_95 (B1), Kahve_98 (B1), Kailash_96 (B1), Karn_97 (B1), Katniss_100 (B1), Keitherie_101 (B1), Khan1_98 (B1), Kikipoo_100 (B1), Kimbrough_99 (B1), KingTut_88 (B1), KingVeVeVe_96 (B1), KlimbOn_97 (B1), Kloppinator_98 (B1), Kwadwo_97 (B1), Kwksand96_99 (B1), Labeouficaum_98 (B1), Larson_100 (B1), LasagnaCat_99 (B1), Lasso_97 (B1), LeeLot_96 (B1), Lego3393_96 (B1), Legolas_99 (B1), Lehmann_98 (B1), LeiMonet_101 (B1), LemonSlice_98 (B1), Longacauda_98 (B1), Lopsy_94 (B1), LostAndPhound_97 (B1), LuckyMarjie_95 (B1), Lulumae_93 (B1), Lulwa_95 (B1), Lumine_99 (B1), MRabcd_98 (B1), Mag7_96 (B1), Mana_95 (B1), Manad_97 (B1), Maru_97 (B1), Maskar_99 (B1), Matalotodo_96 (B1), Mcshane_100 (B1), Mecca_98 (B1), Megamind20_100 (B1), Megatron_99 (B1), Melc17_95 (B1), MelsMeow_96 (B1), Mesh1_98 (B1), Mesmerelda_98 (B1), MichaelPhcott_96 (B1), Mikota_92 (B1), MiniBoss_93 (B1), MitKao_98 (B1), Morgushi_95 (B1), Morty_98 (B1), Mosaic_95 (B1), MrPhizzler_101 (B1), Mulan_97 (B1), Murdoc_94 (B1), Mutante_99 (B1), Nacho_00100 (B1), Nathan_97 (B1), Newman_93 (B1), NiaNia_99 (B1), Nicole21_99 (B1), Nova1_97 (B1), Numberten_98 (B1), Nyala_98 (B1), OSmaximus_98 (B1), Olak_100 (B1), Oline_97 (B1), Olive_94 (B1), OliverWalter_97 (B1), Omniscient_99 (B1), OneBrain_99 (B1), Oosterbaan_98 (B1), Orfeu_98 (B1), Orion_96 (B1), Orwigg_99 (B1), PG1_96 (B1), Pacifista_100 (B1), PallasAthena_99 (B1), Phamished_97 (B1), Phareon_95 (B1), PhatCats2014_97 (B1), PhatLouie_100 (B1), PhenghisKhan_98 (B1), Pherdinand_99 (B1), Phergie_98 (B1), Phipps_95 (B1), Phleuron_95 (B1), PhrankReynolds_96 (B1), PhrodoBaggins_100 (B1), Phunky_95 (B1), Piglet_0097 (B1), PinheadLarry_97 (B1), Pinkman_97 (B1), Pipsqueak_95 (B1), Placalicious_95 (B1), Plata_96 (B1), Plmatters_95 (B1), Podrick_96 (B1), Pops_95 (B1), Potter_92 (B1), Prickles_98 (B1), ProfessorX_95 (B1), Puhltonio_93 (B1), QueenBeane_98 (B1), Quisquillae_100 (B1), RedMaple_96 (B1), RedRaider89_96 (B1), Ricotta_99 (B1), Riggan_99 (B1), Rimu_97 (B1), Riverton_96 (B1), Robyn_99 (B1), Roliet_95 (B1), Roscoe_96 (B1), Roy17_95 (B1), SDcharge11_96 (B1), SallyH_101 (B1), Samaymay_98 (B1), SassyCat97_96 (B1), Schadenfreude_98 (B1), Schueller_96 (B1), Scoot17C_98 (B1), Scrick_99 (B1), Selr12_102 (B1), Serendipity_97 (B1), Serpentine_00100 (B1), ShadowBud_98 (B1), Sheila_92 (B1), ShiVal_97 (B1), Sigman_97 (B1), SilverBell_99 (B1), Simielle_98 (B1), SirBeauregard_98 (B1), Skippy_98 (B1), Slatt_100 (B1), Soile_99 (B1), Solosis_96 (B1), Sophia_96 (B1), Soto_94 (B1), Spartan300_97 (B1), Squid_97 (B1), Squiggle_97 (B1), Struggle_98 (B1), Suffolk_93 (B1), Surely_98 (B1), Swiphy_100 (B1), Swish_99 (B1), TallGrassMM_97 (B1), Taraxa_98 (B1), Telesworld_96 (B1), Thora_96 (B1), ThreeOh3D2_99 (B1), Thunderbird_98 (B1), Timmi_96 (B1), TomBombadil_98 (B1), Tomlarah_98 (B1), Toni_97 (B1), TooFast2Furius_96 (B1), Tooj_95 (B1), Triad_97 (B1), True_99 (B1), Trypo_98 (B1), TyrionL_98 (B1), UAch1_98 (B1), UncleHowie_94 (B1), Usavi_98 (B1), Vaishali24_98 (B1), Valjean_96 (B1), Vaticameos_95 (B1), Veritas_97 (B1), Virapocalypse_99 (B1), Virgeve_96 (B1), Vista_97 (B1), Vivaldi_98 (B1), Vortex_96 (B1), Wallhey_99 (B1), Waterdiva_99 (B1), Weher20_95 (B1), Windsor_97 (B1), Xavier_97 (B1), Yoshand_99 (B1), YouGoGlencoco_98 (B1), Zaider_99 (B1), Zelda_98 (B1), Zonia_98 (B1),

Start 15:

- Found in 43 of 358 (12.0%) of genes in pham
- Manual Annotations of this start: 30 of 317
- Called 100.0% of time when present
- Phage (with cluster) where this start called: Ahwei_90 (B4), Antihero_92 (B4), Apex_94 (B4), Austelle_93 (B4), BirdsNest_5 (B13), BobbyK_93 (B4), BrownCNA_93 (B4), ChrisnMich_94 (B4), Cooper_94 (B4), Epah_92 (B4), Fanaw_88 (B4), Fortunato_90 (B4), Frederick_94 (B4), GinPorsche_94 (B4), Hally898_90 (B4),

Hangman_93 (B4), Hashim76_6 (B13), Heath_87 (B4), Hydro_93 (B4), JAMaL_94 (B4), JaguarMi_87 (B4), JoyceMaria_92 (B4), Lambano_90 (B4), LittleDigger_92 (B4), LittleMinkey_6 (B13), Lolalove_95 (B4), Magpie_89 (B4), Mithril_91 (B4), Mudslide_94 (B4), Nanao_92 (B4), Nigel_90 (B4), Poster_91 (B4), Prince_93 (B4), QueenPie_86 (B4), Quesadilla_93 (B9), RawrgerThat_91 (B4), Renkei_92 (B4), Stinger_90 (B4), VioletZ_95 (B4), Waleliano_92 (B4), Xincheng_85 (B4), Zemanar_91 (B4), Zenteno07_6 (B13),

Summary by clusters:

There are 4 clusters represented in this pham: B4, B13, B1, B9,

Info for manual annotations of cluster B1:

- Start number 14 was manually annotated 287 times for cluster B1.

Info for manual annotations of cluster B13:

- Start number 15 was manually annotated 3 times for cluster B13.

Info for manual annotations of cluster B4:

- Start number 15 was manually annotated 26 times for cluster B4.

Info for manual annotations of cluster B9:

- Start number 15 was manually annotated 1 time for cluster B9.

Gene Information:

Gene: ABU_96 Start: 67451, Stop: 67272, Start Num: 14

Candidate Starts for ABU_96:

(Start: 14 @67451 has 287 MA's), (19, 67415), (26, 67358), (28, 67346), (38, 67283),

Gene: AbsoluteMadLad_96 Start: 67404, Stop: 67225, Start Num: 14

Candidate Starts for AbsoluteMadLad_96:

(Start: 14 @67404 has 287 MA's), (19, 67368), (26, 67311), (28, 67299), (38, 67236),

Gene: Adriana_98 Start: 67723, Stop: 67544, Start Num: 14

Candidate Starts for Adriana_98:

(Start: 14 @67723 has 287 MA's), (19, 67687), (26, 67630), (28, 67618), (38, 67555),

Gene: Aelin_97 Start: 67084, Stop: 66905, Start Num: 14

Candidate Starts for Aelin_97:

(Start: 14 @67084 has 287 MA's), (19, 67048), (26, 66991), (28, 66979), (38, 66916),

Gene: Ahwei_90 Start: 68173, Stop: 68018, Start Num: 15

Candidate Starts for Ahwei_90:

(Start: 15 @68173 has 30 MA's), (16, 68167), (17, 68161), (18, 68158), (20, 68149), (23, 68140), (26, 68098), (27, 68089), (28, 68086), (32, 68059), (35, 68035), (36, 68032),

Gene: Aleia_97 Start: 67093, Stop: 66914, Start Num: 14

Candidate Starts for Aleia_97:

(Start: 14 @67093 has 287 MA's), (19, 67057), (26, 67000), (28, 66988), (38, 66925),

Gene: AltPhacts_95 Start: 66657, Stop: 66478, Start Num: 14
Candidate Starts for AltPhacts_95:
(Start: 14 @66657 has 287 MA's), (19, 66621), (26, 66564), (28, 66552), (38, 66489),

Gene: Altwerkus_95 Start: 66780, Stop: 66601, Start Num: 14
Candidate Starts for Altwerkus_95:
(Start: 14 @66780 has 287 MA's), (19, 66744), (26, 66687), (28, 66675), (38, 66612),

Gene: Anderson_99 Start: 67327, Stop: 67148, Start Num: 14
Candidate Starts for Anderson_99:
(Start: 14 @67327 has 287 MA's), (19, 67291), (26, 67234), (28, 67222), (38, 67159),

Gene: Andre_102 Start: 67718, Stop: 67539, Start Num: 14
Candidate Starts for Andre_102:
(Start: 14 @67718 has 287 MA's), (19, 67682), (26, 67625), (28, 67613), (38, 67550),

Gene: AngelCake_98 Start: 67076, Stop: 66897, Start Num: 14
Candidate Starts for AngelCake_98:
(8, 67232), (Start: 14 @67076 has 287 MA's), (19, 67040), (28, 66971), (38, 66908),

Gene: Antihero_92 Start: 68098, Stop: 67943, Start Num: 15
Candidate Starts for Antihero_92:
(Start: 15 @68098 has 30 MA's), (16, 68092), (17, 68086), (18, 68083), (20, 68074), (23, 68065), (26, 68023), (27, 68014), (28, 68011), (32, 67984), (35, 67960), (36, 67957),

Gene: Antonia_97 Start: 66952, Stop: 66773, Start Num: 14
Candidate Starts for Antonia_97:
(Start: 14 @66952 has 287 MA's), (19, 66916), (26, 66859), (28, 66847), (38, 66784),

Gene: Aonishiki_98 Start: 67262, Stop: 67083, Start Num: 14
Candidate Starts for Aonishiki_98:
(Start: 14 @67262 has 287 MA's), (19, 67226), (26, 67169), (28, 67157), (38, 67094),

Gene: Apex_94 Start: 69212, Stop: 69057, Start Num: 15
Candidate Starts for Apex_94:
(11, 69293), (Start: 15 @69212 has 30 MA's), (17, 69200), (20, 69188), (21, 69185), (23, 69179), (24, 69176), (28, 69125), (32, 69098), (34, 69083), (36, 69071),

Gene: Apizium_96 Start: 66605, Stop: 66426, Start Num: 14
Candidate Starts for Apizium_96:
(Start: 14 @66605 has 287 MA's), (19, 66569), (28, 66500), (37, 66440), (38, 66437),

Gene: Ashraf_99 Start: 67460, Stop: 67281, Start Num: 14
Candidate Starts for Ashraf_99:
(8, 67616), (Start: 14 @67460 has 287 MA's), (19, 67424), (28, 67355), (38, 67292),

Gene: Austelle_93 Start: 69744, Stop: 69589, Start Num: 15
Candidate Starts for Austelle_93:
(11, 69825), (Start: 15 @69744 has 30 MA's), (17, 69732), (20, 69720), (21, 69717), (23, 69711), (24, 69708), (28, 69657), (32, 69630), (34, 69615), (36, 69603),

Gene: Badfish_98 Start: 67631, Stop: 67452, Start Num: 14
Candidate Starts for Badfish_98:

(Start: 14 @67631 has 287 MA's), (19, 67595), (26, 67538), (28, 67526), (38, 67463),

Gene: Banjo_94 Start: 66897, Stop: 66718, Start Num: 14

Candidate Starts for Banjo_94:

(Start: 14 @66897 has 287 MA's), (19, 66861), (26, 66804), (28, 66792), (38, 66729),

Gene: Basato_96 Start: 67117, Stop: 66938, Start Num: 14

Candidate Starts for Basato_96:

(Start: 14 @67117 has 287 MA's), (19, 67081), (26, 67024), (28, 67012), (38, 66949),

Gene: BatteryCK_96 Start: 66887, Stop: 66708, Start Num: 14

Candidate Starts for BatteryCK_96:

(8, 67043), (Start: 14 @66887 has 287 MA's), (19, 66851), (28, 66782), (38, 66719),

Gene: Beaglebox_94 Start: 67019, Stop: 66840, Start Num: 14

Candidate Starts for Beaglebox_94:

(Start: 14 @67019 has 287 MA's), (19, 66983), (26, 66926), (28, 66914), (38, 66851),

Gene: BirdsNest_5 Start: 1077, Stop: 1232, Start Num: 15

Candidate Starts for BirdsNest_5:

(Start: 15 @1077 has 30 MA's), (29, 1173), (36, 1218),

Gene: Bishoperium_98 Start: 67466, Stop: 67287, Start Num: 14

Candidate Starts for Bishoperium_98:

(Start: 14 @67466 has 287 MA's), (19, 67430), (26, 67373), (28, 67361), (38, 67298),

Gene: BlackStallion_97 Start: 67315, Stop: 67136, Start Num: 14

Candidate Starts for BlackStallion_97:

(Start: 14 @67315 has 287 MA's), (19, 67279), (26, 67222), (28, 67210), (38, 67147),

Gene: BlacksBerry_98 Start: 66841, Stop: 66662, Start Num: 14

Candidate Starts for BlacksBerry_98:

(Start: 14 @66841 has 287 MA's), (19, 66805), (26, 66748), (28, 66736), (38, 66673),

Gene: BlueHusk_98 Start: 66801, Stop: 66622, Start Num: 14

Candidate Starts for BlueHusk_98:

(8, 66957), (Start: 14 @66801 has 287 MA's), (19, 66765), (26, 66708), (28, 66696), (38, 66633),

Gene: Bluephacebaby_97 Start: 67500, Stop: 67321, Start Num: 14

Candidate Starts for Bluephacebaby_97:

(Start: 14 @67500 has 287 MA's), (19, 67464), (26, 67407), (28, 67395), (38, 67332),

Gene: BobbyK_93 Start: 68720, Stop: 68565, Start Num: 15

Candidate Starts for BobbyK_93:

(7, 68903), (10, 68825), (Start: 15 @68720 has 30 MA's), (20, 68699), (22, 68693), (25, 68675), (28, 68633), (29, 68624), (31, 68615), (34, 68591), (36, 68579),

Gene: Boehler_95 Start: 66941, Stop: 66762, Start Num: 14

Candidate Starts for Boehler_95:

(8, 67097), (Start: 14 @66941 has 287 MA's), (19, 66905), (28, 66836), (38, 66773),

Gene: BoogieWoogie_99 Start: 67281, Stop: 67102, Start Num: 14

Candidate Starts for BoogieWoogie_99:

(Start: 14 @67281 has 287 MA's), (19, 67245), (26, 67188), (28, 67176), (38, 67113),

Gene: Brilliant_101 Start: 67479, Stop: 67300, Start Num: 14

Candidate Starts for Brilliant_101:

(Start: 14 @67479 has 287 MA's), (19, 67443), (26, 67386), (28, 67374), (38, 67311),

Gene: BrownCNA_93 Start: 69159, Stop: 69004, Start Num: 15

Candidate Starts for BrownCNA_93:

(11, 69240), (Start: 15 @69159 has 30 MA's), (17, 69147), (20, 69135), (21, 69132), (23, 69126), (26, 69084), (28, 69072), (32, 69045), (34, 69030), (36, 69018),

Gene: Buckeye_96 Start: 67775, Stop: 67596, Start Num: 14

Candidate Starts for Buckeye_96:

(Start: 14 @67775 has 287 MA's), (19, 67739), (26, 67682), (28, 67670), (38, 67607),

Gene: Burr_100 Start: 67321, Stop: 67142, Start Num: 14

Candidate Starts for Burr_100:

(Start: 14 @67321 has 287 MA's), (19, 67285), (26, 67228), (28, 67216), (38, 67153),

Gene: CamL_98 Start: 67251, Stop: 67072, Start Num: 14

Candidate Starts for CamL_98:

(Start: 14 @67251 has 287 MA's), (19, 67215), (26, 67158), (28, 67146), (38, 67083),

Gene: CampRoach_98 Start: 67347, Stop: 67168, Start Num: 14

Candidate Starts for CampRoach_98:

(Start: 14 @67347 has 287 MA's), (19, 67311), (26, 67254), (28, 67242), (38, 67179),

Gene: Cannibal_98 Start: 67354, Stop: 67175, Start Num: 14

Candidate Starts for Cannibal_98:

(Start: 14 @67354 has 287 MA's), (19, 67318), (26, 67261), (28, 67249), (38, 67186),

Gene: Carthage_98 Start: 66809, Stop: 66630, Start Num: 14

Candidate Starts for Carthage_98:

(Start: 14 @66809 has 287 MA's), (19, 66773), (26, 66716), (28, 66704), (38, 66641),

Gene: Caspiboi_97 Start: 67185, Stop: 67006, Start Num: 14

Candidate Starts for Caspiboi_97:

(Start: 14 @67185 has 287 MA's), (19, 67149), (26, 67092), (28, 67080), (38, 67017),

Gene: Chaelin_98 Start: 67223, Stop: 67044, Start Num: 14

Candidate Starts for Chaelin_98:

(Start: 14 @67223 has 287 MA's), (19, 67187), (28, 67118), (38, 67055),

Gene: Chah_100 Start: 67051, Stop: 66872, Start Num: 14

Candidate Starts for Chah_100:

(Start: 14 @67051 has 287 MA's), (19, 67015), (26, 66958), (28, 66946), (38, 66883),

Gene: Charles1_101 Start: 67629, Stop: 67450, Start Num: 14

Candidate Starts for Charles1_101:

(Start: 14 @67629 has 287 MA's), (19, 67593), (26, 67536), (28, 67524), (38, 67461),

Gene: CharlieGBrown_96 Start: 66982, Stop: 66803, Start Num: 14

Candidate Starts for CharlieGBrown_96:

(8, 67138), (Start: 14 @66982 has 287 MA's), (19, 66946), (28, 66877), (38, 66814),

Gene: CheetO_94 Start: 67101, Stop: 66922, Start Num: 14

Candidate Starts for CheetO_94:

(Start: 14 @67101 has 287 MA's), (19, 67065), (26, 67008), (28, 66996), (38, 66933),

Gene: Cher_98 Start: 67455, Stop: 67276, Start Num: 14

Candidate Starts for Cher_98:

(Start: 14 @67455 has 287 MA's), (19, 67419), (26, 67362), (28, 67350), (38, 67287),

Gene: Childish_98 Start: 67645, Stop: 67466, Start Num: 14

Candidate Starts for Childish_98:

(Start: 14 @67645 has 287 MA's), (19, 67609), (26, 67552), (28, 67540), (38, 67477),

Gene: Chipette_95 Start: 66938, Stop: 66759, Start Num: 14

Candidate Starts for Chipette_95:

(Start: 14 @66938 has 287 MA's), (19, 66902), (26, 66845), (28, 66833), (38, 66770),

Gene: Chorkpop_99 Start: 67107, Stop: 66928, Start Num: 14

Candidate Starts for Chorkpop_99:

(Start: 14 @67107 has 287 MA's), (19, 67071), (26, 67014), (28, 67002), (38, 66939),

Gene: ChrisnMich_94 Start: 67789, Stop: 67631, Start Num: 15

Candidate Starts for ChrisnMich_94:

(Start: 15 @67789 has 30 MA's), (16, 67783), (17, 67777), (18, 67774), (20, 67765), (26, 67711), (28, 67699), (29, 67690), (34, 67657), (36, 67645),

Gene: Chuni_99 Start: 67692, Stop: 67513, Start Num: 14

Candidate Starts for Chuni_99:

(Start: 14 @67692 has 287 MA's), (19, 67656), (26, 67599), (28, 67587), (38, 67524),

Gene: Chunky_96 Start: 66603, Stop: 66424, Start Num: 14

Candidate Starts for Chunky_96:

(8, 66759), (Start: 14 @66603 has 287 MA's), (19, 66567), (28, 66498), (38, 66435),

Gene: Chute_98 Start: 67646, Stop: 67467, Start Num: 14

Candidate Starts for Chute_98:

(Start: 14 @67646 has 287 MA's), (19, 67610), (26, 67553), (28, 67541), (38, 67478),

Gene: Cobra_98 Start: 67476, Stop: 67297, Start Num: 14

Candidate Starts for Cobra_98:

(Start: 14 @67476 has 287 MA's), (19, 67440), (26, 67383), (28, 67371), (38, 67308),

Gene: Colbert_96 Start: 66375, Stop: 66196, Start Num: 14

Candidate Starts for Colbert_96:

(Start: 14 @66375 has 287 MA's), (19, 66339), (26, 66282), (28, 66270), (38, 66207),

Gene: Coletti_101 Start: 68002, Stop: 67823, Start Num: 14

Candidate Starts for Coletti_101:

(Start: 14 @68002 has 287 MA's), (19, 67966), (26, 67909), (28, 67897), (38, 67834),

Gene: Cooper_94 Start: 68332, Stop: 68177, Start Num: 15

Candidate Starts for Cooper_94:

(13, 68362), (Start: 15 @68332 has 30 MA's), (18, 68317), (19, 68311), (26, 68257), (28, 68245), (29, 68236), (31, 68227), (34, 68203), (36, 68191),

Gene: Cornbread_98 Start: 67503, Stop: 67324, Start Num: 14

Candidate Starts for Cornbread_98:

(8, 67659), (Start: 14 @67503 has 287 MA's), (19, 67467), (26, 67410), (28, 67398), (38, 67335),

Gene: Cornobble_96 Start: 67103, Stop: 66924, Start Num: 14

Candidate Starts for Cornobble_96:

(Start: 14 @67103 has 287 MA's), (19, 67067), (26, 67010), (28, 66998), (38, 66935),

Gene: Cosmolli16_99 Start: 67579, Stop: 67400, Start Num: 14

Candidate Starts for Cosmolli16_99:

(Start: 14 @67579 has 287 MA's), (19, 67543), (26, 67486), (28, 67474), (38, 67411),

Gene: Craff_99 Start: 67864, Stop: 67685, Start Num: 14

Candidate Starts for Craff_99:

(Start: 14 @67864 has 287 MA's), (19, 67828), (26, 67771), (28, 67759), (38, 67696),

Gene: Crownjwl_95 Start: 67119, Stop: 66940, Start Num: 14

Candidate Starts for Crownjwl_95:

(8, 67275), (Start: 14 @67119 has 287 MA's), (19, 67083), (26, 67026), (28, 67014), (38, 66951),

Gene: DaddyDaniels_101 Start: 67598, Stop: 67419, Start Num: 14

Candidate Starts for DaddyDaniels_101:

(Start: 14 @67598 has 287 MA's), (19, 67562), (26, 67505), (28, 67493), (38, 67430),

Gene: Daffy_97 Start: 67092, Stop: 66913, Start Num: 14

Candidate Starts for Daffy_97:

(Start: 14 @67092 has 287 MA's), (19, 67056), (26, 66999), (28, 66987), (38, 66924),

Gene: Daka_99 Start: 67055, Stop: 66876, Start Num: 14

Candidate Starts for Daka_99:

(Start: 14 @67055 has 287 MA's), (19, 67019), (26, 66962), (28, 66950), (38, 66887),

Gene: Dati_95 Start: 67277, Stop: 67098, Start Num: 14

Candidate Starts for Dati_95:

(Start: 14 @67277 has 287 MA's), (19, 67241), (26, 67184), (28, 67172), (38, 67109),

Gene: DelRivs_97 Start: 66906, Stop: 66727, Start Num: 14

Candidate Starts for DelRivs_97:

(Start: 14 @66906 has 287 MA's), (19, 66870), (26, 66813), (28, 66801), (38, 66738),

Gene: Derpp_97 Start: 67015, Stop: 66836, Start Num: 14

Candidate Starts for Derpp_97:

(8, 67171), (Start: 14 @67015 has 287 MA's), (19, 66979), (28, 66910), (38, 66847),

Gene: Dice_98 Start: 66938, Stop: 66759, Start Num: 14

Candidate Starts for Dice_98:

(Start: 14 @66938 has 287 MA's), (19, 66902), (26, 66845), (28, 66833), (38, 66770),

Gene: Dingo_94 Start: 66380, Stop: 66201, Start Num: 14

Candidate Starts for Dingo_94:

(Start: 14 @66380 has 287 MA's), (19, 66344), (26, 66287), (28, 66275), (38, 66212),

Gene: Dione_96 Start: 66658, Stop: 66479, Start Num: 14

Candidate Starts for Dione_96:

(Start: 14 @66658 has 287 MA's), (19, 66622), (26, 66565), (28, 66553), (38, 66490),

Gene: DirtJuice_99 Start: 67767, Stop: 67588, Start Num: 14

Candidate Starts for DirtJuice_99:

(Start: 14 @67767 has 287 MA's), (19, 67731), (26, 67674), (28, 67662), (38, 67599),

Gene: Doddsville_95 Start: 67098, Stop: 66919, Start Num: 14

Candidate Starts for Doddsville_95:

(Start: 14 @67098 has 287 MA's), (19, 67062), (26, 67005), (28, 66993), (38, 66930),

Gene: DoesntMatter_95 Start: 66932, Stop: 66753, Start Num: 14

Candidate Starts for DoesntMatter_95:

(Start: 14 @66932 has 287 MA's), (19, 66896), (26, 66839), (28, 66827), (38, 66764),

Gene: DolOn_101 Start: 68140, Stop: 67961, Start Num: 14

Candidate Starts for DolOn_101:

(Start: 14 @68140 has 287 MA's), (19, 68104), (26, 68047), (28, 68035), (38, 67972),

Gene: DonSanchon_93 Start: 66616, Stop: 66437, Start Num: 14

Candidate Starts for DonSanchon_93:

(Start: 14 @66616 has 287 MA's), (19, 66580), (26, 66523), (28, 66511), (38, 66448),

Gene: DuchessDung_95 Start: 66613, Stop: 66434, Start Num: 14

Candidate Starts for DuchessDung_95:

(8, 66769), (Start: 14 @66613 has 287 MA's), (19, 66577), (26, 66520), (28, 66508), (38, 66445),

Gene: Duggie_98 Start: 67240, Stop: 67061, Start Num: 14

Candidate Starts for Duggie_98:

(Start: 14 @67240 has 287 MA's), (19, 67204), (26, 67147), (28, 67135), (38, 67072),

Gene: Durga_100 Start: 67721, Stop: 67542, Start Num: 14

Candidate Starts for Durga_100:

(Start: 14 @67721 has 287 MA's), (19, 67685), (26, 67628), (28, 67616), (38, 67553),

Gene: ElvisPhasley_98 Start: 67878, Stop: 67699, Start Num: 14

Candidate Starts for ElvisPhasley_98:

(Start: 14 @67878 has 287 MA's), (19, 67842), (28, 67773), (38, 67710),

Gene: EmGer13_97 Start: 66952, Stop: 66773, Start Num: 14

Candidate Starts for EmGer13_97:

(Start: 14 @66952 has 287 MA's), (19, 66916), (26, 66859), (28, 66847), (38, 66784),

Gene: Emiris_100 Start: 67628, Stop: 67449, Start Num: 14

Candidate Starts for Emiris_100:

(Start: 14 @67628 has 287 MA's), (19, 67592), (26, 67535), (28, 67523), (38, 67460),

Gene: EmpTee_97 Start: 67029, Stop: 66850, Start Num: 14

Candidate Starts for EmpTee_97:

(Start: 14 @67029 has 287 MA's), (19, 66993), (26, 66936), (28, 66924), (38, 66861),

Gene: Epah_92 Start: 68098, Stop: 67943, Start Num: 15

Candidate Starts for Epah_92:

(Start: 15 @68098 has 30 MA's), (16, 68092), (17, 68086), (18, 68083), (20, 68074), (23, 68065), (26, 68023), (27, 68014), (28, 68011), (32, 67984), (35, 67960), (36, 67957),

Gene: Eremos_95 Start: 67076, Stop: 66897, Start Num: 14

Candidate Starts for Eremos_95:

(8, 67232), (Start: 14 @67076 has 287 MA's), (19, 67040), (26, 66983), (28, 66971), (38, 66908),

Gene: Etaye_97 Start: 67805, Stop: 67626, Start Num: 14

Candidate Starts for Etaye_97:

(Start: 14 @67805 has 287 MA's), (19, 67769), (26, 67712), (28, 67700), (38, 67637),

Gene: Eugenia_100 Start: 67740, Stop: 67561, Start Num: 14

Candidate Starts for Eugenia_100:

(Start: 14 @67740 has 287 MA's), (19, 67704), (26, 67647), (28, 67635), (38, 67572),

Gene: Fanaw_88 Start: 68764, Stop: 68609, Start Num: 15

Candidate Starts for Fanaw_88:

(11, 68845), (Start: 15 @68764 has 30 MA's), (17, 68752), (20, 68740), (21, 68737), (23, 68731), (24, 68728), (26, 68689), (27, 68680), (28, 68677), (32, 68650), (34, 68635), (36, 68623),

Gene: Fang_98 Start: 67170, Stop: 66991, Start Num: 14

Candidate Starts for Fang_98:

(Start: 14 @67170 has 287 MA's), (19, 67134), (26, 67077), (28, 67065), (38, 67002),

Gene: Flake_97 Start: 67220, Stop: 67041, Start Num: 14

Candidate Starts for Flake_97:

(Start: 14 @67220 has 287 MA's), (19, 67184), (26, 67127), (28, 67115), (38, 67052),

Gene: FleetyMac_102 Start: 67500, Stop: 67321, Start Num: 14

Candidate Starts for FleetyMac_102:

(Start: 14 @67500 has 287 MA's), (19, 67464), (26, 67407), (28, 67395), (38, 67332),

Gene: FluffyNinja_99 Start: 67317, Stop: 67138, Start Num: 14

Candidate Starts for FluffyNinja_99:

(Start: 14 @67317 has 287 MA's), (19, 67281), (26, 67224), (28, 67212), (38, 67149),

Gene: Fortunato_90 Start: 68521, Stop: 68366, Start Num: 15

Candidate Starts for Fortunato_90:

(Start: 15 @68521 has 30 MA's), (17, 68509), (20, 68497), (21, 68494), (23, 68488), (24, 68485), (28, 68434), (32, 68407), (34, 68392), (36, 68380),

Gene: Fozzie_94 Start: 67366, Stop: 67187, Start Num: 14

Candidate Starts for Fozzie_94:

(Start: 14 @67366 has 287 MA's), (19, 67330), (26, 67273), (28, 67261), (38, 67198),

Gene: Frankicide_95 Start: 66866, Stop: 66687, Start Num: 14

Candidate Starts for Frankicide_95:

(Start: 14 @66866 has 287 MA's), (19, 66830), (26, 66773), (28, 66761), (38, 66698),

Gene: Frederick_94 Start: 69026, Stop: 68871, Start Num: 15

Candidate Starts for Frederick_94:

(7, 69209), (10, 69131), (Start: 15 @69026 has 30 MA's), (20, 69005), (22, 68999), (25, 68981), (28, 68939), (29, 68930), (31, 68921), (34, 68897), (36, 68885),

Gene: FremontTroll_98 Start: 67927, Stop: 67748, Start Num: 14

Candidate Starts for FremontTroll_98:

(Start: 14 @67927 has 287 MA's), (19, 67891), (26, 67834), (28, 67822), (38, 67759),

Gene: Freya_94 Start: 66636, Stop: 66457, Start Num: 14

Candidate Starts for Freya_94:

(Start: 14 @66636 has 287 MA's), (19, 66600), (26, 66543), (28, 66531), (38, 66468),

Gene: FriarPreacher_95 Start: 67015, Stop: 66836, Start Num: 14

Candidate Starts for FriarPreacher_95:

(Start: 14 @67015 has 287 MA's), (19, 66979), (26, 66922), (28, 66910), (38, 66847),

Gene: Fringe_102 Start: 67792, Stop: 67613, Start Num: 14

Candidate Starts for Fringe_102:

(Start: 14 @67792 has 287 MA's), (19, 67756), (26, 67699), (28, 67687), (38, 67624),

Gene: FugateOSU_98 Start: 68077, Stop: 67898, Start Num: 14

Candidate Starts for FugateOSU_98:

(Start: 14 @68077 has 287 MA's), (19, 68041), (26, 67984), (28, 67972), (38, 67909),

Gene: Gareth_98 Start: 67466, Stop: 67287, Start Num: 14

Candidate Starts for Gareth_98:

(Start: 14 @67466 has 287 MA's), (19, 67430), (26, 67373), (28, 67361), (38, 67298),

Gene: GeneCoco_97 Start: 67402, Stop: 67223, Start Num: 14

Candidate Starts for GeneCoco_97:

(Start: 14 @67402 has 287 MA's), (19, 67366), (26, 67309), (28, 67297), (38, 67234),

Gene: GinPorsche_94 Start: 68095, Stop: 67940, Start Num: 15

Candidate Starts for GinPorsche_94:

(Start: 15 @68095 has 30 MA's), (16, 68089), (17, 68083), (18, 68080), (20, 68071), (23, 68062), (27, 68011), (28, 68008), (32, 67981), (35, 67957), (36, 67954),

Gene: Giraffe_99 Start: 67470, Stop: 67291, Start Num: 14

Candidate Starts for Giraffe_99:

(Start: 14 @67470 has 287 MA's), (19, 67434), (26, 67377), (28, 67365), (38, 67302),

Gene: Gophee_97 Start: 67457, Stop: 67278, Start Num: 14

Candidate Starts for Gophee_97:

(Start: 14 @67457 has 287 MA's), (19, 67421), (26, 67364), (28, 67352), (38, 67289),

Gene: Grand2040_95 Start: 67192, Stop: 67013, Start Num: 14

Candidate Starts for Grand2040_95:

(Start: 14 @67192 has 287 MA's), (19, 67156), (26, 67099), (28, 67087), (38, 67024),

Gene: GreenChile_96 Start: 66852, Stop: 66673, Start Num: 14

Candidate Starts for GreenChile_96:

(Start: 14 @66852 has 287 MA's), (19, 66816), (26, 66759), (28, 66747), (38, 66684),

Gene: Gwennie1_97 Start: 67281, Stop: 67102, Start Num: 14
Candidate Starts for Gwennie1_97:
(Start: 14 @67281 has 287 MA's), (19, 67245), (26, 67188), (28, 67176), (38, 67113),

Gene: Gwilliam_98 Start: 68000, Stop: 67821, Start Num: 14
Candidate Starts for Gwilliam_98:
(8, 68156), (Start: 14 @68000 has 287 MA's), (19, 67964), (28, 67895), (38, 67832),

Gene: Gyarad_0096 Start: 66605, Stop: 66426, Start Num: 14
Candidate Starts for Gyarad_0096:
(Start: 14 @66605 has 287 MA's), (19, 66569), (28, 66500), (38, 66437),

Gene: HSavage_95 Start: 66588, Stop: 66409, Start Num: 14
Candidate Starts for HSavage_95:
(Start: 14 @66588 has 287 MA's), (19, 66552), (28, 66483), (38, 66420),

Gene: Haimas_95 Start: 66897, Stop: 66718, Start Num: 14
Candidate Starts for Haimas_95:
(Start: 14 @66897 has 287 MA's), (19, 66861), (26, 66804), (28, 66792), (38, 66729),

Gene: Haleema_97 Start: 67016, Stop: 66837, Start Num: 14
Candidate Starts for Haleema_97:
(Start: 14 @67016 has 287 MA's), (19, 66980), (26, 66923), (28, 66911), (38, 66848),

Gene: Hally898_90 Start: 67935, Stop: 67780, Start Num: 15
Candidate Starts for Hally898_90:
(Start: 15 @67935 has 30 MA's), (16, 67929), (17, 67923), (18, 67920), (20, 67911), (23, 67902), (27, 67851), (28, 67848), (32, 67821), (35, 67797), (36, 67794),

Gene: Hamish_95 Start: 67185, Stop: 67006, Start Num: 14
Candidate Starts for Hamish_95:
(Start: 14 @67185 has 287 MA's), (19, 67149), (26, 67092), (28, 67080), (38, 67017),

Gene: Hangman_93 Start: 69321, Stop: 69166, Start Num: 15
Candidate Starts for Hangman_93:
(11, 69402), (Start: 15 @69321 has 30 MA's), (17, 69309), (20, 69297), (21, 69294), (23, 69288), (26, 69246), (28, 69234), (32, 69207), (34, 69192), (36, 69180),

Gene: Happabalu_96 Start: 68110, Stop: 67931, Start Num: 14
Candidate Starts for Happabalu_96:
(Start: 14 @68110 has 287 MA's), (19, 68074), (26, 68017), (28, 68005), (38, 67942),

Gene: Hartsy_96 Start: 67134, Stop: 66955, Start Num: 14
Candidate Starts for Hartsy_96:
(Start: 14 @67134 has 287 MA's), (19, 67098), (26, 67041), (28, 67029), (38, 66966),

Gene: Harvey_95 Start: 66793, Stop: 66614, Start Num: 14
Candidate Starts for Harvey_95:
(Start: 14 @66793 has 287 MA's), (19, 66757), (26, 66700), (28, 66688), (38, 66625),

Gene: Hashim76_6 Start: 1325, Stop: 1483, Start Num: 15
Candidate Starts for Hashim76_6:
(1, 692), (2, 977), (6, 1130), (Start: 15 @1325 has 30 MA's),

Gene: Heath_87 Start: 67091, Stop: 66936, Start Num: 15

Candidate Starts for Heath_87:

(7, 67274), (10, 67196), (Start: 15 @67091 has 30 MA's), (20, 67070), (22, 67064), (25, 67046), (28, 67004), (29, 66995), (31, 66986), (34, 66962), (36, 66950),

Gene: Hekos_95 Start: 66566, Stop: 66387, Start Num: 14

Candidate Starts for Hekos_95:

(Start: 14 @66566 has 287 MA's), (19, 66530), (26, 66473), (28, 66461), (38, 66398),

Gene: Held_96 Start: 66914, Stop: 66735, Start Num: 14

Candidate Starts for Held_96:

(Start: 14 @66914 has 287 MA's), (19, 66878), (26, 66821), (28, 66809), (38, 66746),

Gene: HenryJackson_98 Start: 67634, Stop: 67455, Start Num: 14

Candidate Starts for HenryJackson_98:

(Start: 14 @67634 has 287 MA's), (19, 67598), (26, 67541), (28, 67529), (38, 67466),

Gene: Hertubise_97 Start: 67276, Stop: 67097, Start Num: 14

Candidate Starts for Hertubise_97:

(Start: 14 @67276 has 287 MA's), (19, 67240), (26, 67183), (28, 67171), (38, 67108),

Gene: Hetaeria_97 Start: 67006, Stop: 66827, Start Num: 14

Candidate Starts for Hetaeria_97:

(Start: 14 @67006 has 287 MA's), (19, 66970), (26, 66913), (28, 66901), (38, 66838),

Gene: HighStump_100 Start: 67421, Stop: 67242, Start Num: 14

Candidate Starts for HighStump_100:

(Start: 14 @67421 has 287 MA's), (19, 67385), (26, 67328), (28, 67316), (38, 67253),

Gene: Hocus_97 Start: 66935, Stop: 66756, Start Num: 14

Candidate Starts for Hocus_97:

(8, 67091), (Start: 14 @66935 has 287 MA's), (19, 66899), (26, 66842), (28, 66830), (38, 66767),

Gene: HogWash_98 Start: 67947, Stop: 67768, Start Num: 14

Candidate Starts for HogWash_98:

(Start: 14 @67947 has 287 MA's), (19, 67911), (26, 67854), (28, 67842), (38, 67779),

Gene: Horchata_92 Start: 66773, Stop: 66594, Start Num: 14

Candidate Starts for Horchata_92:

(8, 66929), (Start: 14 @66773 has 287 MA's), (19, 66737), (28, 66668), (38, 66605),

Gene: Hydro_93 Start: 69108, Stop: 68953, Start Num: 15

Candidate Starts for Hydro_93:

(11, 69189), (Start: 15 @69108 has 30 MA's), (17, 69096), (20, 69084), (21, 69081), (23, 69075), (24, 69072), (28, 69021), (32, 68994), (34, 68979), (36, 68967),

Gene: ImtiyazSitla_99 Start: 67460, Stop: 67281, Start Num: 14

Candidate Starts for ImtiyazSitla_99:

(8, 67616), (Start: 14 @67460 has 287 MA's), (19, 67424), (28, 67355), (38, 67292),

Gene: Inchworm_99 Start: 67308, Stop: 67129, Start Num: 14

Candidate Starts for Inchworm_99:

(Start: 14 @67308 has 287 MA's), (19, 67272), (26, 67215), (28, 67203), (38, 67140),

Gene: Inverness_95 Start: 66865, Stop: 66686, Start Num: 14

Candidate Starts for Inverness_95:

(Start: 14 @66865 has 287 MA's), (19, 66829), (26, 66772), (28, 66760), (38, 66697),

Gene: Iridessa_100 Start: 67033, Stop: 66854, Start Num: 14

Candidate Starts for Iridessa_100:

(Start: 14 @67033 has 287 MA's), (19, 66997), (26, 66940), (28, 66928), (38, 66865),

Gene: Iridoclysis_97 Start: 67198, Stop: 67019, Start Num: 14

Candidate Starts for Iridoclysis_97:

(Start: 14 @67198 has 287 MA's), (19, 67162), (26, 67105), (28, 67093), (38, 67030),

Gene: IsaacEli_100 Start: 67439, Stop: 67260, Start Num: 14

Candidate Starts for IsaacEli_100:

(Start: 14 @67439 has 287 MA's), (19, 67403), (26, 67346), (28, 67334), (38, 67271),

Gene: JAMaL_94 Start: 68808, Stop: 68653, Start Num: 15

Candidate Starts for JAMaL_94:

(11, 68889), (Start: 15 @68808 has 30 MA's), (17, 68796), (20, 68784), (21, 68781), (23, 68775), (24, 68772), (28, 68721), (32, 68694), (34, 68679), (36, 68667),

Gene: JDog_97 Start: 67468, Stop: 67289, Start Num: 14

Candidate Starts for JDog_97:

(Start: 14 @67468 has 287 MA's), (19, 67432), (26, 67375), (28, 67363), (38, 67300),

Gene: JacAttac_98 Start: 66912, Stop: 66733, Start Num: 14

Candidate Starts for JacAttac_98:

(Start: 14 @66912 has 287 MA's), (19, 66876), (26, 66819), (28, 66807), (38, 66744),

Gene: JaguarMi_87 Start: 69082, Stop: 68927, Start Num: 15

Candidate Starts for JaguarMi_87:

(Start: 15 @69082 has 30 MA's), (17, 69070), (20, 69058), (21, 69055), (23, 69049), (26, 69007), (27, 68998), (28, 68995), (32, 68968), (34, 68953), (36, 68941),

Gene: JakeO_99 Start: 67196, Stop: 67017, Start Num: 14

Candidate Starts for JakeO_99:

(Start: 14 @67196 has 287 MA's), (19, 67160), (26, 67103), (28, 67091), (38, 67028),

Gene: JangoPhett_96 Start: 67274, Stop: 67095, Start Num: 14

Candidate Starts for JangoPhett_96:

(Start: 14 @67274 has 287 MA's), (19, 67238), (26, 67181), (28, 67169), (38, 67106),

Gene: Jesabah_102 Start: 68037, Stop: 67858, Start Num: 14

Candidate Starts for Jesabah_102:

(Start: 14 @68037 has 287 MA's), (19, 68001), (26, 67944), (28, 67932), (38, 67869),

Gene: Jillium_98 Start: 67351, Stop: 67172, Start Num: 14

Candidate Starts for Jillium_98:

(Start: 14 @67351 has 287 MA's), (19, 67315), (26, 67258), (28, 67246), (38, 67183),

Gene: Jiminy_98 Start: 67132, Stop: 66953, Start Num: 14

Candidate Starts for Jiminy_98:

(Start: 14 @67132 has 287 MA's), (19, 67096), (26, 67039), (28, 67027), (38, 66964),

Gene: Jiraiya_99 Start: 67216, Stop: 67037, Start Num: 14

Candidate Starts for Jiraiya_99:

(Start: 14 @67216 has 287 MA's), (19, 67180), (26, 67123), (28, 67111), (38, 67048),

Gene: JoyceMaria_92 Start: 69153, Stop: 68998, Start Num: 15

Candidate Starts for JoyceMaria_92:

(11, 69234), (Start: 15 @69153 has 30 MA's), (17, 69141), (20, 69129), (21, 69126), (23, 69120), (26, 69078), (28, 69066), (32, 69039), (34, 69024), (36, 69012),

Gene: KLucky39_95 Start: 66736, Stop: 66557, Start Num: 14

Candidate Starts for KLucky39_95:

(Start: 14 @66736 has 287 MA's), (19, 66700), (26, 66643), (28, 66631), (38, 66568),

Gene: Kahve_98 Start: 67632, Stop: 67453, Start Num: 14

Candidate Starts for Kahve_98:

(Start: 14 @67632 has 287 MA's), (19, 67596), (26, 67539), (28, 67527), (38, 67464),

Gene: Kailash_96 Start: 67331, Stop: 67152, Start Num: 14

Candidate Starts for Kailash_96:

(8, 67487), (Start: 14 @67331 has 287 MA's), (19, 67295), (28, 67226), (38, 67163),

Gene: Karn_97 Start: 66944, Stop: 66765, Start Num: 14

Candidate Starts for Karn_97:

(Start: 14 @66944 has 287 MA's), (19, 66908), (26, 66851), (28, 66839), (38, 66776),

Gene: Katniss_100 Start: 67048, Stop: 66869, Start Num: 14

Candidate Starts for Katniss_100:

(Start: 14 @67048 has 287 MA's), (19, 67012), (26, 66955), (28, 66943), (38, 66880),

Gene: Keitherie_101 Start: 67690, Stop: 67511, Start Num: 14

Candidate Starts for Keitherie_101:

(Start: 14 @67690 has 287 MA's), (19, 67654), (26, 67597), (28, 67585), (38, 67522),

Gene: Khan1_98 Start: 67411, Stop: 67232, Start Num: 14

Candidate Starts for Khan1_98:

(Start: 14 @67411 has 287 MA's), (19, 67375), (26, 67318), (28, 67306), (38, 67243),

Gene: Kikipoo_100 Start: 67439, Stop: 67260, Start Num: 14

Candidate Starts for Kikipoo_100:

(Start: 14 @67439 has 287 MA's), (19, 67403), (26, 67346), (28, 67334), (38, 67271),

Gene: Kimbrough_99 Start: 67511, Stop: 67332, Start Num: 14

Candidate Starts for Kimbrough_99:

(Start: 14 @67511 has 287 MA's), (19, 67475), (26, 67418), (28, 67406), (38, 67343),

Gene: KingTut_88 Start: 63428, Stop: 63249, Start Num: 14

Candidate Starts for KingTut_88:

(Start: 14 @63428 has 287 MA's), (19, 63392), (26, 63335), (28, 63323), (38, 63260),

Gene: KingVeVeVe_96 Start: 66644, Stop: 66465, Start Num: 14

Candidate Starts for KingVeVeVe_96:
(8, 66800), (Start: 14 @66644 has 287 MA's), (19, 66608), (26, 66551), (28, 66539), (38, 66476),

Gene: KlimbOn_97 Start: 66951, Stop: 66772, Start Num: 14
Candidate Starts for KlimbOn_97:
(Start: 14 @66951 has 287 MA's), (19, 66915), (26, 66858), (28, 66846), (38, 66783),

Gene: Kloppinator_98 Start: 67081, Stop: 66902, Start Num: 14
Candidate Starts for Kloppinator_98:
(Start: 14 @67081 has 287 MA's), (19, 67045), (26, 66988), (28, 66976), (38, 66913),

Gene: Kwadwo_97 Start: 66935, Stop: 66756, Start Num: 14
Candidate Starts for Kwadwo_97:
(Start: 14 @66935 has 287 MA's), (19, 66899), (26, 66842), (28, 66830), (38, 66767),

Gene: Kwksand96_99 Start: 67201, Stop: 67022, Start Num: 14
Candidate Starts for Kwksand96_99:
(Start: 14 @67201 has 287 MA's), (19, 67165), (26, 67108), (28, 67096), (38, 67033),

Gene: Labeouficaum_98 Start: 67015, Stop: 66836, Start Num: 14
Candidate Starts for Labeouficaum_98:
(8, 67171), (Start: 14 @67015 has 287 MA's), (19, 66979), (28, 66910), (38, 66847),

Gene: Lambano_90 Start: 67935, Stop: 67780, Start Num: 15
Candidate Starts for Lambano_90:
(Start: 15 @67935 has 30 MA's), (16, 67929), (17, 67923), (18, 67920), (20, 67911), (23, 67902), (27, 67851), (28, 67848), (32, 67821), (35, 67797), (36, 67794),

Gene: Larson_100 Start: 67280, Stop: 67101, Start Num: 14
Candidate Starts for Larson_100:
(Start: 14 @67280 has 287 MA's), (19, 67244), (26, 67187), (28, 67175), (38, 67112),

Gene: LasagnaCat_99 Start: 67317, Stop: 67138, Start Num: 14
Candidate Starts for LasagnaCat_99:
(Start: 14 @67317 has 287 MA's), (19, 67281), (26, 67224), (28, 67212), (38, 67149),

Gene: Lasso_97 Start: 67177, Stop: 66998, Start Num: 14
Candidate Starts for Lasso_97:
(Start: 14 @67177 has 287 MA's), (19, 67141), (26, 67084), (28, 67072), (38, 67009),

Gene: LeeLot_96 Start: 67522, Stop: 67343, Start Num: 14
Candidate Starts for LeeLot_96:
(Start: 14 @67522 has 287 MA's), (19, 67486), (26, 67429), (28, 67417), (38, 67354),

Gene: Lego3393_96 Start: 67638, Stop: 67459, Start Num: 14
Candidate Starts for Lego3393_96:
(Start: 14 @67638 has 287 MA's), (19, 67602), (26, 67545), (28, 67533), (38, 67470),

Gene: Legolas_99 Start: 67265, Stop: 67086, Start Num: 14
Candidate Starts for Legolas_99:
(Start: 14 @67265 has 287 MA's), (19, 67229), (26, 67172), (28, 67160), (38, 67097),

Gene: Lehmann_98 Start: 67152, Stop: 66973, Start Num: 14

Candidate Starts for Lehmann_98:

(Start: 14 @67152 has 287 MA's), (19, 67116), (28, 67047), (38, 66984),

Gene: LeiMonet_101 Start: 67398, Stop: 67219, Start Num: 14

Candidate Starts for LeiMonet_101:

(Start: 14 @67398 has 287 MA's), (19, 67362), (26, 67305), (28, 67293), (38, 67230),

Gene: LemonSlice_98 Start: 66924, Stop: 66745, Start Num: 14

Candidate Starts for LemonSlice_98:

(Start: 14 @66924 has 287 MA's), (19, 66888), (26, 66831), (28, 66819), (38, 66756),

Gene: LittleDigger_92 Start: 68037, Stop: 67882, Start Num: 15

Candidate Starts for LittleDigger_92:

(Start: 15 @68037 has 30 MA's), (16, 68031), (17, 68025), (18, 68022), (20, 68013), (23, 68004), (26, 67962), (27, 67953), (28, 67950), (32, 67923), (35, 67899), (36, 67896),

Gene: LittleMinkey_6 Start: 1324, Stop: 1482, Start Num: 15

Candidate Starts for LittleMinkey_6:

(6, 1129), (Start: 15 @1324 has 30 MA's),

Gene: Lolalove_95 Start: 69056, Stop: 68901, Start Num: 15

Candidate Starts for Lolalove_95:

(11, 69137), (Start: 15 @69056 has 30 MA's), (17, 69044), (20, 69032), (21, 69029), (23, 69023), (26, 68981), (28, 68969), (32, 68942), (34, 68927), (36, 68915),

Gene: Longacauda_98 Start: 67159, Stop: 66980, Start Num: 14

Candidate Starts for Longacauda_98:

(Start: 14 @67159 has 287 MA's), (19, 67123), (26, 67066), (28, 67054), (38, 66991),

Gene: Lopsy_94 Start: 66830, Stop: 66651, Start Num: 14

Candidate Starts for Lopsy_94:

(Start: 14 @66830 has 287 MA's), (19, 66794), (26, 66737), (28, 66725), (38, 66662),

Gene: LostAndPhound_97 Start: 67466, Stop: 67287, Start Num: 14

Candidate Starts for LostAndPhound_97:

(Start: 14 @67466 has 287 MA's), (19, 67430), (26, 67373), (28, 67361), (38, 67298),

Gene: LuckyMarjie_95 Start: 66676, Stop: 66497, Start Num: 14

Candidate Starts for LuckyMarjie_95:

(Start: 14 @66676 has 287 MA's), (19, 66640), (26, 66583), (28, 66571), (38, 66508),

Gene: Lulumae_93 Start: 66657, Stop: 66478, Start Num: 14

Candidate Starts for Lulumae_93:

(Start: 14 @66657 has 287 MA's), (19, 66621), (26, 66564), (28, 66552), (38, 66489),

Gene: Lulwa_95 Start: 66290, Stop: 66111, Start Num: 14

Candidate Starts for Lulwa_95:

(Start: 14 @66290 has 287 MA's), (19, 66254), (26, 66197), (28, 66185), (38, 66122),

Gene: Lumine_99 Start: 67114, Stop: 66935, Start Num: 14

Candidate Starts for Lumine_99:

(Start: 14 @67114 has 287 MA's), (19, 67078), (26, 67021), (28, 67009), (38, 66946),

Gene: MRabcd_98 Start: 67392, Stop: 67213, Start Num: 14
Candidate Starts for MRabcd_98:
(Start: 14 @67392 has 287 MA's), (19, 67356), (26, 67299), (28, 67287), (38, 67224),

Gene: Mag7_96 Start: 66875, Stop: 66696, Start Num: 14
Candidate Starts for Mag7_96:
(8, 67031), (Start: 14 @66875 has 287 MA's), (19, 66839), (28, 66770), (38, 66707),

Gene: Magpie_89 Start: 68870, Stop: 68715, Start Num: 15
Candidate Starts for Magpie_89:
(Start: 15 @68870 has 30 MA's), (17, 68858), (18, 68855), (20, 68846), (23, 68837), (24, 68834), (28, 68783), (32, 68756), (34, 68741), (36, 68729),

Gene: Mana_95 Start: 67080, Stop: 66901, Start Num: 14
Candidate Starts for Mana_95:
(Start: 14 @67080 has 287 MA's), (19, 67044), (26, 66987), (28, 66975), (38, 66912),

Gene: Manad_97 Start: 67189, Stop: 67010, Start Num: 14
Candidate Starts for Manad_97:
(Start: 14 @67189 has 287 MA's), (19, 67153), (26, 67096), (28, 67084), (38, 67021),

Gene: Maru_97 Start: 67285, Stop: 67106, Start Num: 14
Candidate Starts for Maru_97:
(Start: 14 @67285 has 287 MA's), (19, 67249), (26, 67192), (28, 67180), (38, 67117),

Gene: Maskar_99 Start: 67460, Stop: 67281, Start Num: 14
Candidate Starts for Maskar_99:
(8, 67616), (Start: 14 @67460 has 287 MA's), (19, 67424), (28, 67355), (38, 67292),

Gene: Matalotodo_96 Start: 67924, Stop: 67745, Start Num: 14
Candidate Starts for Matalotodo_96:
(Start: 14 @67924 has 287 MA's), (19, 67888), (26, 67831), (28, 67819), (38, 67756),

Gene: Mcshane_100 Start: 67307, Stop: 67128, Start Num: 14
Candidate Starts for Mcshane_100:
(8, 67463), (Start: 14 @67307 has 287 MA's), (19, 67271), (26, 67214), (28, 67202), (38, 67139),

Gene: Mecca_98 Start: 67491, Stop: 67312, Start Num: 14
Candidate Starts for Mecca_98:
(Start: 14 @67491 has 287 MA's), (19, 67455), (26, 67398), (28, 67386), (38, 67323),

Gene: Megamind20_100 Start: 67271, Stop: 67092, Start Num: 14
Candidate Starts for Megamind20_100:
(Start: 14 @67271 has 287 MA's), (19, 67235), (26, 67178), (28, 67166), (38, 67103),

Gene: Megatron_99 Start: 67610, Stop: 67431, Start Num: 14
Candidate Starts for Megatron_99:
(Start: 14 @67610 has 287 MA's), (19, 67574), (26, 67517), (28, 67505), (38, 67442),

Gene: Melc17_95 Start: 67560, Stop: 67381, Start Num: 14
Candidate Starts for Melc17_95:
(Start: 14 @67560 has 287 MA's), (19, 67524), (26, 67467), (28, 67455), (38, 67392),

Gene: MelsMeow_96 Start: 66941, Stop: 66762, Start Num: 14

Candidate Starts for MelsMeow_96:

(8, 67097), (Start: 14 @66941 has 287 MA's), (19, 66905), (28, 66836), (38, 66773),

Gene: Mesh1_98 Start: 67375, Stop: 67196, Start Num: 14

Candidate Starts for Mesh1_98:

(Start: 14 @67375 has 287 MA's), (19, 67339), (26, 67282), (28, 67270), (38, 67207),

Gene: Mesmerelda_98 Start: 67491, Stop: 67312, Start Num: 14

Candidate Starts for Mesmerelda_98:

(Start: 14 @67491 has 287 MA's), (19, 67455), (26, 67398), (28, 67386), (38, 67323),

Gene: MichaelPhcott_96 Start: 66872, Stop: 66693, Start Num: 14

Candidate Starts for MichaelPhcott_96:

(8, 67028), (Start: 14 @66872 has 287 MA's), (19, 66836), (28, 66767), (38, 66704),

Gene: Mikota_92 Start: 66367, Stop: 66188, Start Num: 14

Candidate Starts for Mikota_92:

(Start: 14 @66367 has 287 MA's), (19, 66331), (26, 66274), (28, 66262), (38, 66199),

Gene: MiniBoss_93 Start: 65988, Stop: 65809, Start Num: 14

Candidate Starts for MiniBoss_93:

(8, 66144), (Start: 14 @65988 has 287 MA's), (19, 65952), (26, 65895), (28, 65883), (38, 65820),

Gene: MitKao_98 Start: 67093, Stop: 66914, Start Num: 14

Candidate Starts for MitKao_98:

(Start: 14 @67093 has 287 MA's), (19, 67057), (26, 67000), (28, 66988), (38, 66925),

Gene: Mithril_91 Start: 68882, Stop: 68727, Start Num: 15

Candidate Starts for Mithril_91:

(11, 68963), (Start: 15 @68882 has 30 MA's), (17, 68870), (20, 68858), (21, 68855), (23, 68849), (26, 68807), (28, 68795), (32, 68768), (34, 68753), (36, 68741),

Gene: Morgushi_95 Start: 66908, Stop: 66729, Start Num: 14

Candidate Starts for Morgushi_95:

(Start: 14 @66908 has 287 MA's), (19, 66872), (26, 66815), (28, 66803), (38, 66740),

Gene: Morty_98 Start: 67478, Stop: 67299, Start Num: 14

Candidate Starts for Morty_98:

(Start: 14 @67478 has 287 MA's), (19, 67442), (26, 67385), (28, 67373), (38, 67310),

Gene: Mosaic_95 Start: 67089, Stop: 66910, Start Num: 14

Candidate Starts for Mosaic_95:

(Start: 14 @67089 has 287 MA's), (19, 67053), (26, 66996), (28, 66984), (38, 66921),

Gene: MrPhizzler_101 Start: 67388, Stop: 67209, Start Num: 14

Candidate Starts for MrPhizzler_101:

(Start: 14 @67388 has 287 MA's), (19, 67352), (26, 67295), (28, 67283), (38, 67220),

Gene: Mudslide_94 Start: 69287, Stop: 69132, Start Num: 15

Candidate Starts for Mudslide_94:

(11, 69368), (Start: 15 @69287 has 30 MA's), (17, 69275), (20, 69263), (21, 69260), (23, 69254), (24, 69251), (28, 69200), (32, 69173), (34, 69158), (36, 69146),

Gene: Mulan_97 Start: 67122, Stop: 66943, Start Num: 14
Candidate Starts for Mulan_97:
(Start: 14 @67122 has 287 MA's), (19, 67086), (26, 67029), (28, 67017), (38, 66954),

Gene: Murdoc_94 Start: 67201, Stop: 67022, Start Num: 14
Candidate Starts for Murdoc_94:
(Start: 14 @67201 has 287 MA's), (19, 67165), (26, 67108), (28, 67096), (38, 67033),

Gene: Mutante_99 Start: 67095, Stop: 66916, Start Num: 14
Candidate Starts for Mutante_99:
(Start: 14 @67095 has 287 MA's), (19, 67059), (26, 67002), (28, 66990), (38, 66927),

Gene: Nacho_00100 Start: 67922, Stop: 67743, Start Num: 14
Candidate Starts for Nacho_00100:
(Start: 14 @67922 has 287 MA's), (19, 67886), (26, 67829), (28, 67817), (38, 67754),

Gene: Nanao_92 Start: 67948, Stop: 67793, Start Num: 15
Candidate Starts for Nanao_92:
(Start: 15 @67948 has 30 MA's), (16, 67942), (17, 67936), (18, 67933), (20, 67924), (23, 67915), (27, 67864), (28, 67861), (32, 67834), (35, 67810), (36, 67807),

Gene: Nathan_97 Start: 67343, Stop: 67164, Start Num: 14
Candidate Starts for Nathan_97:
(Start: 14 @67343 has 287 MA's), (19, 67307), (26, 67250), (28, 67238), (38, 67175),

Gene: Newman_93 Start: 67199, Stop: 67020, Start Num: 14
Candidate Starts for Newman_93:
(Start: 14 @67199 has 287 MA's), (19, 67163), (26, 67106), (28, 67094), (38, 67031),

Gene: NiaNia_99 Start: 66969, Stop: 66790, Start Num: 14
Candidate Starts for NiaNia_99:
(Start: 14 @66969 has 287 MA's), (19, 66933), (26, 66876), (28, 66864), (38, 66801),

Gene: Nicole21_99 Start: 67229, Stop: 67050, Start Num: 14
Candidate Starts for Nicole21_99:
(Start: 14 @67229 has 287 MA's), (19, 67193), (26, 67136), (28, 67124), (38, 67061),

Gene: Nigel_90 Start: 67578, Stop: 67423, Start Num: 15
Candidate Starts for Nigel_90:
(11, 67659), (Start: 15 @67578 has 30 MA's), (17, 67566), (21, 67551), (25, 67533), (29, 67482), (31, 67473), (35, 67440), (36, 67437),

Gene: Nova1_97 Start: 67074, Stop: 66895, Start Num: 14
Candidate Starts for Nova1_97:
(Start: 14 @67074 has 287 MA's), (19, 67038), (26, 66981), (28, 66969), (38, 66906),

Gene: Numberten_98 Start: 67208, Stop: 67029, Start Num: 14
Candidate Starts for Numberten_98:
(Start: 14 @67208 has 287 MA's), (19, 67172), (26, 67115), (28, 67103), (38, 67040),

Gene: Nyala_98 Start: 66944, Stop: 66765, Start Num: 14
Candidate Starts for Nyala_98:

(Start: 14 @66944 has 287 MA's), (19, 66908), (26, 66851), (28, 66839), (38, 66776),

Gene: OSmaximus_98 Start: 67497, Stop: 67318, Start Num: 14

Candidate Starts for OSmaximus_98:

(Start: 14 @67497 has 287 MA's), (19, 67461), (26, 67404), (28, 67392), (38, 67329),

Gene: Olak_100 Start: 67477, Stop: 67298, Start Num: 14

Candidate Starts for Olak_100:

(Start: 14 @67477 has 287 MA's), (19, 67441), (26, 67384), (28, 67372), (38, 67309),

Gene: Oline_97 Start: 67099, Stop: 66920, Start Num: 14

Candidate Starts for Oline_97:

(Start: 14 @67099 has 287 MA's), (19, 67063), (26, 67006), (28, 66994), (38, 66931),

Gene: Olive_94 Start: 67341, Stop: 67162, Start Num: 14

Candidate Starts for Olive_94:

(Start: 14 @67341 has 287 MA's), (19, 67305), (26, 67248), (28, 67236), (38, 67173),

Gene: OliverWalter_97 Start: 67393, Stop: 67214, Start Num: 14

Candidate Starts for OliverWalter_97:

(Start: 14 @67393 has 287 MA's), (19, 67357), (26, 67300), (28, 67288), (38, 67225),

Gene: Omniscient_99 Start: 67798, Stop: 67619, Start Num: 14

Candidate Starts for Omniscient_99:

(Start: 14 @67798 has 287 MA's), (19, 67762), (26, 67705), (28, 67693), (38, 67630),

Gene: OneBrain_99 Start: 67080, Stop: 66901, Start Num: 14

Candidate Starts for OneBrain_99:

(Start: 14 @67080 has 287 MA's), (19, 67044), (26, 66987), (28, 66975), (38, 66912),

Gene: Oosterbaan_98 Start: 67336, Stop: 67157, Start Num: 14

Candidate Starts for Oosterbaan_98:

(Start: 14 @67336 has 287 MA's), (19, 67300), (26, 67243), (28, 67231), (38, 67168),

Gene: Orfeu_98 Start: 67457, Stop: 67278, Start Num: 14

Candidate Starts for Orfeu_98:

(Start: 14 @67457 has 287 MA's), (19, 67421), (26, 67364), (28, 67352), (38, 67289),

Gene: Orion_96 Start: 67028, Stop: 66849, Start Num: 14

Candidate Starts for Orion_96:

(Start: 14 @67028 has 287 MA's), (19, 66992), (26, 66935), (28, 66923), (38, 66860),

Gene: Orwigg_99 Start: 67233, Stop: 67054, Start Num: 14

Candidate Starts for Orwigg_99:

(Start: 14 @67233 has 287 MA's), (19, 67197), (26, 67140), (28, 67128), (38, 67065),

Gene: PG1_96 Start: 67600, Stop: 67421, Start Num: 14

Candidate Starts for PG1_96:

(Start: 14 @67600 has 287 MA's), (19, 67564), (26, 67507), (28, 67495), (38, 67432),

Gene: Pacifista_100 Start: 67318, Stop: 67139, Start Num: 14

Candidate Starts for Pacifista_100:

(Start: 14 @67318 has 287 MA's), (19, 67282), (26, 67225), (28, 67213), (38, 67150),

Gene: PallasAthena_99 Start: 66930, Stop: 66751, Start Num: 14
Candidate Starts for PallasAthena_99:
(Start: 14 @66930 has 287 MA's), (19, 66894), (26, 66837), (28, 66825), (38, 66762),

Gene: Phamished_97 Start: 67116, Stop: 66937, Start Num: 14
Candidate Starts for Phamished_97:
(Start: 14 @67116 has 287 MA's), (19, 67080), (26, 67023), (28, 67011), (38, 66948),

Gene: Phareon_95 Start: 66641, Stop: 66462, Start Num: 14
Candidate Starts for Phareon_95:
(Start: 14 @66641 has 287 MA's), (19, 66605), (26, 66548), (28, 66536), (38, 66473),

Gene: PhatCats2014_97 Start: 67601, Stop: 67422, Start Num: 14
Candidate Starts for PhatCats2014_97:
(Start: 14 @67601 has 287 MA's), (19, 67565), (26, 67508), (28, 67496), (38, 67433),

Gene: PhatLouie_100 Start: 67474, Stop: 67295, Start Num: 14
Candidate Starts for PhatLouie_100:
(Start: 14 @67474 has 287 MA's), (19, 67438), (26, 67381), (28, 67369), (38, 67306),

Gene: PhenghisKhan_98 Start: 67105, Stop: 66926, Start Num: 14
Candidate Starts for PhenghisKhan_98:
(8, 67261), (Start: 14 @67105 has 287 MA's), (19, 67069), (26, 67012), (28, 67000), (38, 66937),

Gene: Pherdinand_99 Start: 67320, Stop: 67141, Start Num: 14
Candidate Starts for Pherdinand_99:
(Start: 14 @67320 has 287 MA's), (19, 67284), (26, 67227), (28, 67215), (38, 67152),

Gene: Phergie_98 Start: 67094, Stop: 66915, Start Num: 14
Candidate Starts for Phergie_98:
(8, 67250), (Start: 14 @67094 has 287 MA's), (19, 67058), (26, 67001), (28, 66989), (38, 66926),

Gene: Phipps_95 Start: 66894, Stop: 66715, Start Num: 14
Candidate Starts for Phipps_95:
(Start: 14 @66894 has 287 MA's), (19, 66858), (26, 66801), (28, 66789), (38, 66726),

Gene: Phleuron_95 Start: 66905, Stop: 66726, Start Num: 14
Candidate Starts for Phleuron_95:
(8, 67061), (Start: 14 @66905 has 287 MA's), (19, 66869), (28, 66800), (38, 66737),

Gene: PhrankReynolds_96 Start: 67099, Stop: 66920, Start Num: 14
Candidate Starts for PhrankReynolds_96:
(8, 67255), (Start: 14 @67099 has 287 MA's), (19, 67063), (26, 67006), (28, 66994), (38, 66931),

Gene: PhrodoBaggins_100 Start: 67474, Stop: 67295, Start Num: 14
Candidate Starts for PhrodoBaggins_100:
(Start: 14 @67474 has 287 MA's), (19, 67438), (26, 67381), (28, 67369), (38, 67306),

Gene: Phunky_95 Start: 66976, Stop: 66797, Start Num: 14
Candidate Starts for Phunky_95:
(Start: 14 @66976 has 287 MA's), (19, 66940), (26, 66883), (28, 66871), (38, 66808),

Gene: Piglet_0097 Start: 67593, Stop: 67414, Start Num: 14
Candidate Starts for Piglet_0097:
(Start: 14 @67593 has 287 MA's), (19, 67557), (26, 67500), (28, 67488), (38, 67425),

Gene: PinheadLarry_97 Start: 67245, Stop: 67066, Start Num: 14
Candidate Starts for PinheadLarry_97:
(Start: 14 @67245 has 287 MA's), (19, 67209), (26, 67152), (28, 67140), (38, 67077),

Gene: Pinkman_97 Start: 67317, Stop: 67138, Start Num: 14
Candidate Starts for Pinkman_97:
(Start: 14 @67317 has 287 MA's), (19, 67281), (26, 67224), (28, 67212), (38, 67149),

Gene: Pipsqueak_95 Start: 66928, Stop: 66749, Start Num: 14
Candidate Starts for Pipsqueak_95:
(Start: 14 @66928 has 287 MA's), (19, 66892), (26, 66835), (28, 66823), (38, 66760),

Gene: Placalicious_95 Start: 67686, Stop: 67507, Start Num: 14
Candidate Starts for Placalicious_95:
(Start: 14 @67686 has 287 MA's), (19, 67650), (26, 67593), (28, 67581), (38, 67518),

Gene: Plata_96 Start: 66908, Stop: 66729, Start Num: 14
Candidate Starts for Plata_96:
(Start: 14 @66908 has 287 MA's), (19, 66872), (26, 66815), (28, 66803), (38, 66740),

Gene: Plmatters_95 Start: 66919, Stop: 66740, Start Num: 14
Candidate Starts for Plmatters_95:
(Start: 14 @66919 has 287 MA's), (19, 66883), (26, 66826), (28, 66814), (38, 66751),

Gene: Podrick_96 Start: 67007, Stop: 66828, Start Num: 14
Candidate Starts for Podrick_96:
(Start: 14 @67007 has 287 MA's), (19, 66971), (26, 66914), (28, 66902), (38, 66839),

Gene: Pops_95 Start: 66967, Stop: 66788, Start Num: 14
Candidate Starts for Pops_95:
(Start: 14 @66967 has 287 MA's), (19, 66931), (26, 66874), (28, 66862), (38, 66799),

Gene: Poster_91 Start: 67949, Stop: 67794, Start Num: 15
Candidate Starts for Poster_91:
(Start: 15 @67949 has 30 MA's), (16, 67943), (17, 67937), (18, 67934), (20, 67925), (23, 67916), (27, 67865), (28, 67862), (32, 67835), (35, 67811), (36, 67808),

Gene: Potter_92 Start: 66928, Stop: 66749, Start Num: 14
Candidate Starts for Potter_92:
(Start: 14 @66928 has 287 MA's), (19, 66892), (26, 66835), (28, 66823), (38, 66760),

Gene: Prickles_98 Start: 67054, Stop: 66875, Start Num: 14
Candidate Starts for Prickles_98:
(Start: 14 @67054 has 287 MA's), (19, 67018), (26, 66961), (28, 66949), (38, 66886),

Gene: Prince_93 Start: 69154, Stop: 68999, Start Num: 15
Candidate Starts for Prince_93:
(11, 69235), (Start: 15 @69154 has 30 MA's), (17, 69142), (20, 69130), (21, 69127), (23, 69121), (24, 69118), (28, 69067), (32, 69040), (34, 69025), (36, 69013),

Gene: ProfessorX_95 Start: 66687, Stop: 66508, Start Num: 14
Candidate Starts for ProfessorX_95:
(Start: 14 @66687 has 287 MA's), (19, 66651), (26, 66594), (28, 66582), (38, 66519),

Gene: Puhltonio_93 Start: 66924, Stop: 66745, Start Num: 14
Candidate Starts for Puhltonio_93:
(Start: 14 @66924 has 287 MA's), (19, 66888), (26, 66831), (28, 66819), (38, 66756),

Gene: QueenBeane_98 Start: 67251, Stop: 67072, Start Num: 14
Candidate Starts for QueenBeane_98:
(Start: 14 @67251 has 287 MA's), (19, 67215), (26, 67158), (28, 67146), (38, 67083),

Gene: QueenPie_86 Start: 67819, Stop: 67664, Start Num: 15
Candidate Starts for QueenPie_86:
(9, 67936), (10, 67924), (13, 67849), (Start: 15 @67819 has 30 MA's), (17, 67807), (19, 67798), (20, 67795), (21, 67792), (23, 67786), (24, 67783), (26, 67744), (28, 67732), (32, 67705), (34, 67690), (36, 67678),

Gene: Quesadilla_93 Start: 68486, Stop: 68325, Start Num: 15
Candidate Starts for Quesadilla_93:
(3, 68822), (4, 68816), (5, 68729), (Start: 15 @68486 has 30 MA's), (26, 68405), (30, 68381),

Gene: Quisquilliae_100 Start: 67262, Stop: 67083, Start Num: 14
Candidate Starts for Quisquilliae_100:
(Start: 14 @67262 has 287 MA's), (19, 67226), (26, 67169), (28, 67157), (38, 67094),

Gene: RawrgerThat_91 Start: 68652, Stop: 68497, Start Num: 15
Candidate Starts for RawrgerThat_91:
(Start: 15 @68652 has 30 MA's), (17, 68640), (20, 68628), (21, 68625), (23, 68619), (24, 68616), (28, 68565), (32, 68538), (34, 68523), (36, 68511),

Gene: RedMaple_96 Start: 67585, Stop: 67406, Start Num: 14
Candidate Starts for RedMaple_96:
(Start: 14 @67585 has 287 MA's), (19, 67549), (26, 67492), (28, 67480), (38, 67417),

Gene: RedRaider89_96 Start: 67307, Stop: 67128, Start Num: 14
Candidate Starts for RedRaider89_96:
(8, 67463), (Start: 14 @67307 has 287 MA's), (19, 67271), (26, 67214), (28, 67202), (38, 67139),

Gene: Renkei_92 Start: 68031, Stop: 67876, Start Num: 15
Candidate Starts for Renkei_92:
(Start: 15 @68031 has 30 MA's), (16, 68025), (17, 68019), (18, 68016), (20, 68007), (23, 67998), (26, 67956), (27, 67947), (28, 67944), (32, 67917), (35, 67893), (36, 67890),

Gene: Ricotta_99 Start: 66947, Stop: 66768, Start Num: 14
Candidate Starts for Ricotta_99:
(Start: 14 @66947 has 287 MA's), (19, 66911), (26, 66854), (28, 66842), (38, 66779),

Gene: Riggan_99 Start: 67432, Stop: 67253, Start Num: 14
Candidate Starts for Riggan_99:
(Start: 14 @67432 has 287 MA's), (19, 67396), (26, 67339), (28, 67327), (38, 67264),

Gene: Rimu_97 Start: 67411, Stop: 67232, Start Num: 14
Candidate Starts for Rimu_97:
(Start: 14 @67411 has 287 MA's), (19, 67375), (26, 67318), (28, 67306), (38, 67243),

Gene: Riverton_96 Start: 66935, Stop: 66756, Start Num: 14
Candidate Starts for Riverton_96:
(Start: 14 @66935 has 287 MA's), (19, 66899), (26, 66842), (28, 66830), (38, 66767),

Gene: Robyn_99 Start: 67323, Stop: 67144, Start Num: 14
Candidate Starts for Robyn_99:
(Start: 14 @67323 has 287 MA's), (19, 67287), (26, 67230), (28, 67218), (38, 67155),

Gene: Roliet_95 Start: 66291, Stop: 66112, Start Num: 14
Candidate Starts for Roliet_95:
(Start: 14 @66291 has 287 MA's), (19, 66255), (26, 66198), (28, 66186), (38, 66123),

Gene: Roscoe_96 Start: 67203, Stop: 67024, Start Num: 14
Candidate Starts for Roscoe_96:
(8, 67359), (Start: 14 @67203 has 287 MA's), (19, 67167), (28, 67098), (38, 67035),

Gene: Roy17_95 Start: 66657, Stop: 66478, Start Num: 14
Candidate Starts for Roy17_95:
(Start: 14 @66657 has 287 MA's), (19, 66621), (26, 66564), (28, 66552), (38, 66489),

Gene: SDcharge11_96 Start: 66307, Stop: 66128, Start Num: 14
Candidate Starts for SDcharge11_96:
(Start: 14 @66307 has 287 MA's), (19, 66271), (26, 66214), (28, 66202), (38, 66139),

Gene: SallyH_101 Start: 67191, Stop: 67012, Start Num: 14
Candidate Starts for SallyH_101:
(Start: 14 @67191 has 287 MA's), (19, 67155), (26, 67098), (28, 67086), (38, 67023),

Gene: Samaymay_98 Start: 67251, Stop: 67072, Start Num: 14
Candidate Starts for Samaymay_98:
(Start: 14 @67251 has 287 MA's), (19, 67215), (26, 67158), (28, 67146), (38, 67083),

Gene: SassyCat97_96 Start: 66919, Stop: 66740, Start Num: 14
Candidate Starts for SassyCat97_96:
(Start: 14 @66919 has 287 MA's), (19, 66883), (26, 66826), (28, 66814), (38, 66751),

Gene: Schadenfreude_98 Start: 66968, Stop: 66789, Start Num: 14
Candidate Starts for Schadenfreude_98:
(Start: 14 @66968 has 287 MA's), (19, 66932), (26, 66875), (28, 66863), (38, 66800),

Gene: Schueller_96 Start: 67192, Stop: 67013, Start Num: 14
Candidate Starts for Schueller_96:
(8, 67348), (Start: 14 @67192 has 287 MA's), (19, 67156), (28, 67087), (38, 67024),

Gene: Scoot17C_98 Start: 67033, Stop: 66854, Start Num: 14
Candidate Starts for Scoot17C_98:
(Start: 14 @67033 has 287 MA's), (19, 66997), (26, 66940), (28, 66928), (38, 66865),

Gene: Scrick_99 Start: 67302, Stop: 67123, Start Num: 14

Candidate Starts for Scrick_99:

(Start: 14 @67302 has 287 MA's), (19, 67266), (26, 67209), (28, 67197), (38, 67134),

Gene: Selr12_102 Start: 67343, Stop: 67164, Start Num: 14

Candidate Starts for Selr12_102:

(Start: 14 @67343 has 287 MA's), (19, 67307), (26, 67250), (28, 67238), (38, 67175),

Gene: Serendipity_97 Start: 67405, Stop: 67226, Start Num: 14

Candidate Starts for Serendipity_97:

(Start: 14 @67405 has 287 MA's), (19, 67369), (26, 67312), (28, 67300), (38, 67237),

Gene: Serpentine_00100 Start: 67485, Stop: 67306, Start Num: 14

Candidate Starts for Serpentine_00100:

(Start: 14 @67485 has 287 MA's), (19, 67449), (26, 67392), (28, 67380), (38, 67317),

Gene: ShadowBud_98 Start: 67259, Stop: 67080, Start Num: 14

Candidate Starts for ShadowBud_98:

(Start: 14 @67259 has 287 MA's), (19, 67223), (26, 67166), (28, 67154), (38, 67091),

Gene: Sheila_92 Start: 66485, Stop: 66306, Start Num: 14

Candidate Starts for Sheila_92:

(8, 66641), (Start: 14 @66485 has 287 MA's), (19, 66449), (26, 66392), (28, 66380), (38, 66317),

Gene: ShiVal_97 Start: 66956, Stop: 66777, Start Num: 14

Candidate Starts for ShiVal_97:

(Start: 14 @66956 has 287 MA's), (19, 66920), (26, 66863), (28, 66851), (38, 66788),

Gene: Sigman_97 Start: 66912, Stop: 66733, Start Num: 14

Candidate Starts for Sigman_97:

(Start: 14 @66912 has 287 MA's), (19, 66876), (26, 66819), (28, 66807), (38, 66744),

Gene: SilverBell_99 Start: 67366, Stop: 67187, Start Num: 14

Candidate Starts for SilverBell_99:

(Start: 14 @67366 has 287 MA's), (19, 67330), (26, 67273), (28, 67261), (38, 67198),

Gene: Simielle_98 Start: 66898, Stop: 66719, Start Num: 14

Candidate Starts for Simielle_98:

(Start: 14 @66898 has 287 MA's), (19, 66862), (26, 66805), (28, 66793), (38, 66730),

Gene: SirBeauregard_98 Start: 67220, Stop: 67041, Start Num: 14

Candidate Starts for SirBeauregard_98:

(Start: 14 @67220 has 287 MA's), (19, 67184), (28, 67115), (38, 67052),

Gene: Skippy_98 Start: 67327, Stop: 67148, Start Num: 14

Candidate Starts for Skippy_98:

(Start: 14 @67327 has 287 MA's), (19, 67291), (26, 67234), (28, 67222), (38, 67159),

Gene: Slatt_100 Start: 67583, Stop: 67404, Start Num: 14

Candidate Starts for Slatt_100:

(Start: 14 @67583 has 287 MA's), (19, 67547), (26, 67490), (28, 67478), (38, 67415),

Gene: Soile_99 Start: 67452, Stop: 67273, Start Num: 14

Candidate Starts for Soile_99:

(Start: 14 @67452 has 287 MA's), (19, 67416), (26, 67359), (28, 67347), (38, 67284),

Gene: Solosis_96 Start: 66920, Stop: 66741, Start Num: 14

Candidate Starts for Solosis_96:

(8, 67076), (Start: 14 @66920 has 287 MA's), (19, 66884), (26, 66827), (28, 66815), (38, 66752),

Gene: Sophia_96 Start: 66907, Stop: 66728, Start Num: 14

Candidate Starts for Sophia_96:

(Start: 14 @66907 has 287 MA's), (19, 66871), (26, 66814), (28, 66802), (38, 66739),

Gene: Soto_94 Start: 66348, Stop: 66169, Start Num: 14

Candidate Starts for Soto_94:

(Start: 14 @66348 has 287 MA's), (19, 66312), (26, 66255), (28, 66243), (38, 66180),

Gene: Spartan300_97 Start: 67169, Stop: 66990, Start Num: 14

Candidate Starts for Spartan300_97:

(Start: 14 @67169 has 287 MA's), (19, 67133), (26, 67076), (28, 67064), (38, 67001),

Gene: Squid_97 Start: 67197, Stop: 67018, Start Num: 14

Candidate Starts for Squid_97:

(Start: 14 @67197 has 287 MA's), (19, 67161), (26, 67104), (28, 67092), (38, 67029),

Gene: Squiggle_97 Start: 66926, Stop: 66747, Start Num: 14

Candidate Starts for Squiggle_97:

(Start: 14 @66926 has 287 MA's), (19, 66890), (26, 66833), (28, 66821), (38, 66758),

Gene: Stinger_90 Start: 67339, Stop: 67184, Start Num: 15

Candidate Starts for Stinger_90:

(13, 67369), (Start: 15 @67339 has 30 MA's), (18, 67324), (19, 67318), (25, 67294), (26, 67264), (28, 67252), (31, 67234), (36, 67198),

Gene: Struggle_98 Start: 67024, Stop: 66845, Start Num: 14

Candidate Starts for Struggle_98:

(Start: 14 @67024 has 287 MA's), (19, 66988), (26, 66931), (28, 66919), (38, 66856),

Gene: Suffolk_93 Start: 66853, Stop: 66674, Start Num: 14

Candidate Starts for Suffolk_93:

(Start: 14 @66853 has 287 MA's), (19, 66817), (26, 66760), (28, 66748), (38, 66685),

Gene: Surely_98 Start: 67489, Stop: 67310, Start Num: 14

Candidate Starts for Surely_98:

(Start: 14 @67489 has 287 MA's), (19, 67453), (26, 67396), (28, 67384), (38, 67321),

Gene: Swiphy_100 Start: 67474, Stop: 67295, Start Num: 14

Candidate Starts for Swiphy_100:

(Start: 14 @67474 has 287 MA's), (19, 67438), (26, 67381), (28, 67369), (38, 67306),

Gene: Swish_99 Start: 67336, Stop: 67157, Start Num: 14

Candidate Starts for Swish_99:

(Start: 14 @67336 has 287 MA's), (19, 67300), (26, 67243), (28, 67231), (38, 67168),

Gene: TallGrassMM_97 Start: 66985, Stop: 66806, Start Num: 14

Candidate Starts for TallGrassMM_97:

(8, 67141), (Start: 14 @66985 has 287 MA's), (19, 66949), (26, 66892), (28, 66880), (38, 66817),

Gene: Taraxa_98 Start: 66815, Stop: 66636, Start Num: 14

Candidate Starts for Taraxa_98:

(Start: 14 @66815 has 287 MA's), (19, 66779), (26, 66722), (28, 66710), (38, 66647),

Gene: Telesworld_96 Start: 67059, Stop: 66880, Start Num: 14

Candidate Starts for Telesworld_96:

(Start: 14 @67059 has 287 MA's), (19, 67023), (26, 66966), (28, 66954), (38, 66891),

Gene: Thora_96 Start: 67440, Stop: 67261, Start Num: 14

Candidate Starts for Thora_96:

(Start: 14 @67440 has 287 MA's), (19, 67404), (26, 67347), (28, 67335), (38, 67272),

Gene: ThreeOh3D2_99 Start: 67593, Stop: 67414, Start Num: 14

Candidate Starts for ThreeOh3D2_99:

(Start: 14 @67593 has 287 MA's), (19, 67557), (26, 67500), (28, 67488), (38, 67425),

Gene: Thunderbird_98 Start: 67181, Stop: 67002, Start Num: 14

Candidate Starts for Thunderbird_98:

(Start: 14 @67181 has 287 MA's), (19, 67145), (26, 67088), (28, 67076), (38, 67013),

Gene: Timmi_96 Start: 66956, Stop: 66777, Start Num: 14

Candidate Starts for Timmi_96:

(Start: 14 @66956 has 287 MA's), (19, 66920), (26, 66863), (28, 66851), (38, 66788),

Gene: TomBombadil_98 Start: 67481, Stop: 67302, Start Num: 14

Candidate Starts for TomBombadil_98:

(Start: 14 @67481 has 287 MA's), (19, 67445), (26, 67388), (28, 67376), (38, 67313),

Gene: Tomlarah_98 Start: 67789, Stop: 67610, Start Num: 14

Candidate Starts for Tomlarah_98:

(Start: 14 @67789 has 287 MA's), (19, 67753), (26, 67696), (28, 67684), (38, 67621),

Gene: Toni_97 Start: 67385, Stop: 67206, Start Num: 14

Candidate Starts for Toni_97:

(Start: 14 @67385 has 287 MA's), (19, 67349), (26, 67292), (28, 67280), (38, 67217),

Gene: TooFast2Furius_96 Start: 67103, Stop: 66924, Start Num: 14

Candidate Starts for TooFast2Furius_96:

(Start: 14 @67103 has 287 MA's), (19, 67067), (26, 67010), (28, 66998), (38, 66935),

Gene: Tooj_95 Start: 66599, Stop: 66420, Start Num: 14

Candidate Starts for Tooj_95:

(Start: 14 @66599 has 287 MA's), (19, 66563), (26, 66506), (28, 66494), (38, 66431),

Gene: Triad_97 Start: 66457, Stop: 66278, Start Num: 14

Candidate Starts for Triad_97:

(Start: 14 @66457 has 287 MA's), (19, 66421), (28, 66352), (38, 66289),

Gene: True_99 Start: 67301, Stop: 67122, Start Num: 14

Candidate Starts for True_99:

(Start: 14 @67301 has 287 MA's), (19, 67265), (26, 67208), (28, 67196), (38, 67133),

Gene: Trypo_98 Start: 67653, Stop: 67474, Start Num: 14
Candidate Starts for Trypo_98:
(Start: 14 @67653 has 287 MA's), (19, 67617), (26, 67560), (28, 67548), (38, 67485),

Gene: TyrionL_98 Start: 67015, Stop: 66836, Start Num: 14
Candidate Starts for TyrionL_98:
(8, 67171), (Start: 14 @67015 has 287 MA's), (19, 66979), (28, 66910), (38, 66847),

Gene: UAch1_98 Start: 67006, Stop: 66827, Start Num: 14
Candidate Starts for UAch1_98:
(Start: 14 @67006 has 287 MA's), (19, 66970), (26, 66913), (28, 66901), (38, 66838),

Gene: UncleHowie_94 Start: 66617, Stop: 66438, Start Num: 14
Candidate Starts for UncleHowie_94:
(Start: 14 @66617 has 287 MA's), (19, 66581), (26, 66524), (28, 66512), (38, 66449),

Gene: Usavi_98 Start: 67779, Stop: 67600, Start Num: 14
Candidate Starts for Usavi_98:
(Start: 14 @67779 has 287 MA's), (19, 67743), (26, 67686), (28, 67674), (38, 67611),

Gene: Vaishali24_98 Start: 66996, Stop: 66817, Start Num: 14
Candidate Starts for Vaishali24_98:
(Start: 14 @66996 has 287 MA's), (19, 66960), (26, 66903), (28, 66891), (38, 66828),

Gene: Valjean_96 Start: 67161, Stop: 66982, Start Num: 14
Candidate Starts for Valjean_96:
(Start: 14 @67161 has 287 MA's), (19, 67125), (26, 67068), (28, 67056), (38, 66993),

Gene: Vaticameos_95 Start: 65488, Stop: 65309, Start Num: 14
Candidate Starts for Vaticameos_95:
(Start: 14 @65488 has 287 MA's), (19, 65452), (26, 65395), (28, 65383), (38, 65320),

Gene: Veritas_97 Start: 67096, Stop: 66917, Start Num: 14
Candidate Starts for Veritas_97:
(8, 67252), (Start: 14 @67096 has 287 MA's), (19, 67060), (28, 66991), (38, 66928),

Gene: VioletZ_95 Start: 69261, Stop: 69106, Start Num: 15
Candidate Starts for VioletZ_95:
(11, 69342), (Start: 15 @69261 has 30 MA's), (17, 69249), (20, 69237), (21, 69234), (23, 69228), (24, 69225), (28, 69174), (32, 69147), (34, 69132), (36, 69120),

Gene: Virapocalypse_99 Start: 67283, Stop: 67104, Start Num: 14
Candidate Starts for Virapocalypse_99:
(Start: 14 @67283 has 287 MA's), (19, 67247), (26, 67190), (28, 67178), (38, 67115),

Gene: Virgeve_96 Start: 66901, Stop: 66722, Start Num: 14
Candidate Starts for Virgeve_96:
(Start: 14 @66901 has 287 MA's), (19, 66865), (26, 66808), (28, 66796), (38, 66733),

Gene: Vista_97 Start: 67095, Stop: 66916, Start Num: 14
Candidate Starts for Vista_97:
(Start: 14 @67095 has 287 MA's), (19, 67059), (26, 67002), (28, 66990), (38, 66927),

Gene: Vivaldi_98 Start: 67255, Stop: 67076, Start Num: 14
Candidate Starts for Vivaldi_98:
(Start: 14 @67255 has 287 MA's), (19, 67219), (28, 67150), (38, 67087),

Gene: Vortex_96 Start: 67201, Stop: 67022, Start Num: 14
Candidate Starts for Vortex_96:
(Start: 14 @67201 has 287 MA's), (19, 67165), (26, 67108), (28, 67096), (38, 67033),

Gene: Waleliano_92 Start: 68908, Stop: 68753, Start Num: 15
Candidate Starts for Waleliano_92:
(11, 68989), (Start: 15 @68908 has 30 MA's), (17, 68896), (20, 68884), (21, 68881), (23, 68875), (26, 68833), (28, 68821), (32, 68794), (34, 68779), (36, 68767),

Gene: Wallhey_99 Start: 67200, Stop: 67021, Start Num: 14
Candidate Starts for Wallhey_99:
(Start: 14 @67200 has 287 MA's), (19, 67164), (26, 67107), (28, 67095), (38, 67032),

Gene: Waterdiva_99 Start: 67467, Stop: 67288, Start Num: 14
Candidate Starts for Waterdiva_99:
(Start: 14 @67467 has 287 MA's), (19, 67431), (26, 67374), (28, 67362), (38, 67299),

Gene: Weher20_95 Start: 67539, Stop: 67360, Start Num: 14
Candidate Starts for Weher20_95:
(Start: 14 @67539 has 287 MA's), (19, 67503), (26, 67446), (28, 67434), (38, 67371),

Gene: Windsor_97 Start: 67226, Stop: 67047, Start Num: 14
Candidate Starts for Windsor_97:
(Start: 14 @67226 has 287 MA's), (19, 67190), (28, 67121), (38, 67058),

Gene: Xavier_97 Start: 67094, Stop: 66915, Start Num: 14
Candidate Starts for Xavier_97:
(Start: 14 @67094 has 287 MA's), (19, 67058), (26, 67001), (28, 66989), (38, 66926),

Gene: Xincheng_85 Start: 69024, Stop: 68869, Start Num: 15
Candidate Starts for Xincheng_85:
(Start: 15 @69024 has 30 MA's), (17, 69012), (20, 69000), (21, 68997), (23, 68991), (26, 68949), (27, 68940), (28, 68937), (32, 68910), (34, 68895), (36, 68883),

Gene: Yoshand_99 Start: 67319, Stop: 67140, Start Num: 14
Candidate Starts for Yoshand_99:
(Start: 14 @67319 has 287 MA's), (19, 67283), (26, 67226), (28, 67214), (38, 67151),

Gene: YouGoGlencoco_98 Start: 67209, Stop: 67030, Start Num: 14
Candidate Starts for YouGoGlencoco_98:
(Start: 14 @67209 has 287 MA's), (19, 67173), (26, 67116), (28, 67104), (38, 67041),

Gene: Zaider_99 Start: 67584, Stop: 67405, Start Num: 14
Candidate Starts for Zaider_99:
(Start: 14 @67584 has 287 MA's), (19, 67548), (26, 67491), (28, 67479), (38, 67416),

Gene: Zelda_98 Start: 67540, Stop: 67361, Start Num: 14
Candidate Starts for Zelda_98:

(Start: 14 @67540 has 287 MA's), (19, 67504), (26, 67447), (28, 67435), (38, 67372),

Gene: Zemanar_91 Start: 68925, Stop: 68770, Start Num: 15

Candidate Starts for Zemanar_91:

(7, 69108), (10, 69030), (Start: 15 @68925 has 30 MA's), (20, 68904), (22, 68898), (25, 68880), (28, 68838), (29, 68829), (31, 68820), (34, 68796), (36, 68784),

Gene: Zenteno07_6 Start: 1332, Stop: 1487, Start Num: 15

Candidate Starts for Zenteno07_6:

(12, 1296), (Start: 15 @1332 has 30 MA's), (17, 1344), (20, 1356), (23, 1365), (26, 1407), (30, 1431), (32, 1446), (33, 1452),

Gene: Zonia_98 Start: 67650, Stop: 67471, Start Num: 14

Candidate Starts for Zonia_98:

(Start: 14 @67650 has 287 MA's), (19, 67614), (26, 67557), (28, 67545), (38, 67482),