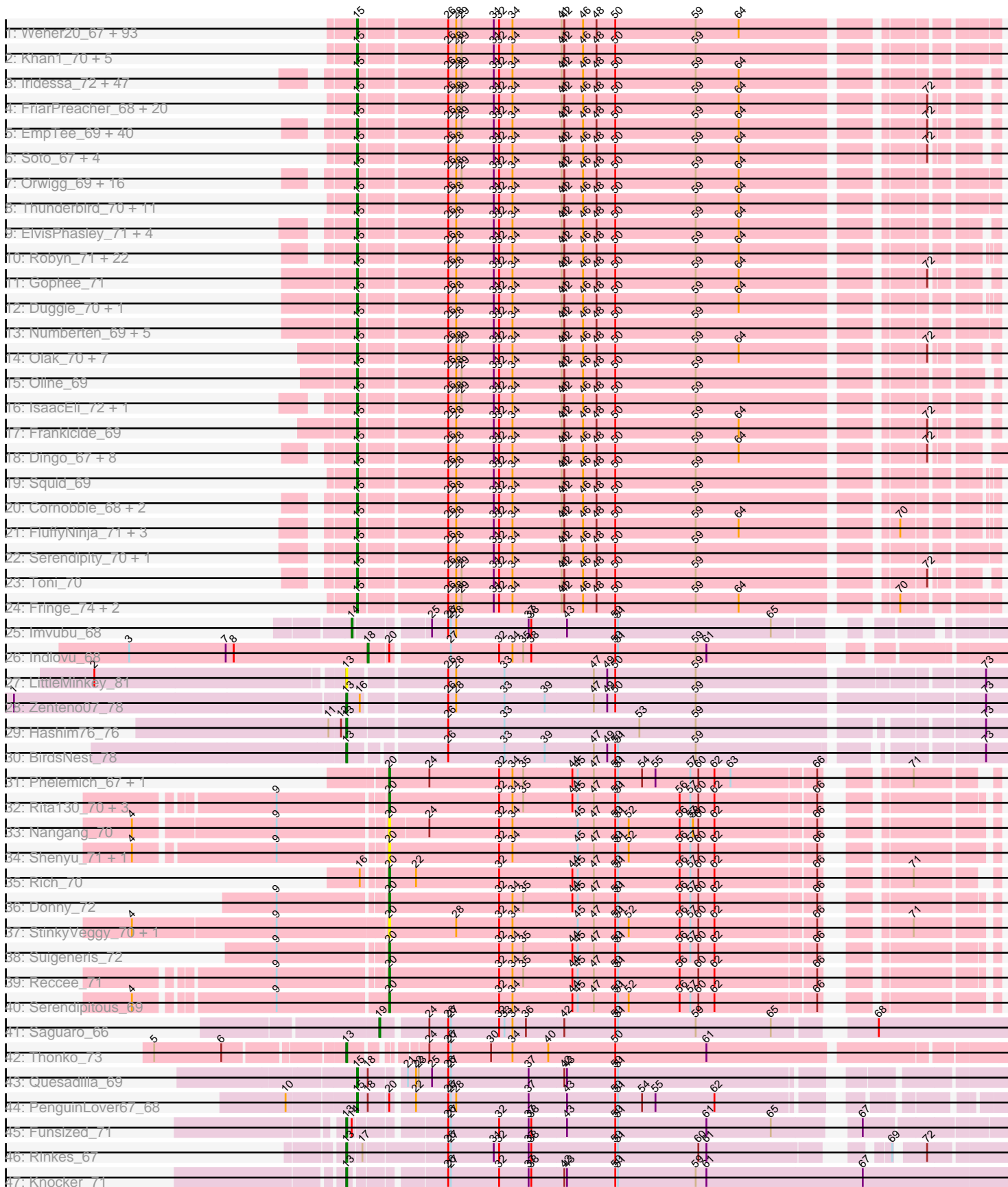


Pham 307923



Note: Tracks are now grouped by subcluster and scaled. Switching in subcluster is indicated by changes in track color. Track scale is now set by default to display the region 30 bp upstream of start 1 to 30 bp downstream of the last possible start. If this default region is judged to be packed too tightly with annotated starts, the track will be further scaled to only show that region of the ORF with annotated starts. This action will be indicated by adding "Zoomed" to the title. For starts, yellow indicates the location of called starts comprised solely of Glimmer/GeneMark auto-annotations, green indicates the location of called starts with at least 1 manual gene annotation.

Pham 307923 Report

This analysis was run 06/27/26 on database version 652.

Pham number 307923 has 345 members, 36 are drafts.

Phages represented in each track:

- Track 1 : Weher20_67, JDog_69, Magic8_69, Murdoc_67, Mulan_69, Podrick_69, Taraxa_70, Boehler_69, Melc17_67, CampRoach_71, Vortex_69, Pipsqueak_67, Veritas_69, Plata_69, MichaelPhcott_68, PallasAthena_71, Chute_70, Karn_70, DelRivs_68, Adriana_71, Longacauda_71, UncleHowie_67, Durga_72, Buckeye_70, Legolas_71, LemonSlice_70, Cobra_70, TomBombadil_70, Zelda_70, AngelCake_69, Pops_68, HogWash_70, DolOn_74, Gyarad_0069, Haimas_68, LeeLot_69, PinheadLarry_69, KlimbOn_69, Potter_67, Doddsville_68, Chaelin_71, Sophia_68, Cher_70, Dati_67, OSmaximus_70, Gwilliam_71, Hocus_68, RedMaple_70, Crownjwl_68, Jiminy_70, Kailash_68, JakeO_71, FugateOSU_70, LostAndPhound_69, Horchata_67, Virgeve_68, LeiMonet_73, MelsMeow_69, Nova1_70, YouGoGlencoco_70, Phareon_68, Gwennie1_69, Morgushi_68, Phergie_70, HighStump_71, Eremos_69, Coletti_73, Harvey_67, Surely_70, SassyCat97_68, Lasso_69, Trypo_71, BlacksBerry_70, Squiggle_69, Roscoe_70, Struggle_70, Held_68, Hartsy_69, Soile_71, Fozzie_68, Mag7_68, Fang_71, PhrankReynolds_69, Andre_72, DonSanchon_66, Chuni_71, Apizium_69, PhenghisKhan_70, Jesabah_72, Happabalu_68, LasagnaCat_71, Aleia_69, BatteryCK_68, Inchworm_71
- Track 2 : Khan1_70, Emiris_71, Scrick_69, Slatt_70, Rimu_70, DuchessDung_69
- Track 3 : Iridessa_72, Vista_69, Thora_69, ImtiyazSitla_71, Anderson_72, Badfish_71, GeneCoco_71, Hertubise_70, Cannibal_71, Mesh1_71, Oosterbaan_70, Eugenia_71, Orion_70, Scoot17C_71, Nathan_71, Megatron_71, Cornbread_69, PhrodoBaggins_72, Mosaic_68, Altwerkus_69, Katniss_72, PG1_70, Chah_72, Mana_69, Piglet_0071, ThreeOh3D2_72, Kahve_71, SilverBell_71, Mutante_71, MRabcd_70, Skippy_72, Hetaeria_70, Maskar_71, UAch1_71, HenryJackson_71, Zonia_71, Keitherie_73, TallGrassMM_69, Serpentine_0071, Wallhey_71, Jillium_71, Waterdiva_71, Maru_70, Ashraf_71, Pinkman_70, Matalotodo_69, Kwksand96_71, Phipps_70
- Track 4 : FriarPreacher_68, Basato_69, Plmatters_68, Banjo_68, QueenBeane_70, Iridoclysis_69, Freya_67, OneBrain_73, Samaymay_70, Lumine_71, Craff_73, MiniBoss_67, CamL_70, Phamished_71, Placalicious_70, True_68, Simielle_70, Orfeu_69, Puhltonio_68, Bishoperium_70, Ricotta_70
- Track 5 : EmpTee_69, FleetyMac_73, LuckyMarjie_67, Mesmerelda_69, Pacifista_69, Mecca_70, Kimbrough_71, Roy17_68, Mcshane_69, Sigman_70, JacAttac_70, Tomlarah_71, ProfessorX_68, Olive_68, Omniscient_71, RedRaider89_69, ABU_69, DoesntMatter_67, NiaNia_71, Lulumae_67, Bluephacebaby_69, Spartan300_69, Beaglebox_68, Roliet_67, Virapocalypse_71, Burr_70, Phunky_68, Zaider_71, AltPhacts_68, Vaticameos_67, JangoPhett_68,

Dice_69, Nyala_69, FremontTroll_68, Nicole21_71, Dione_68, Selr12_71, Riggan_71, Telesworld_68, Valjean_69, BoogieWoogie_70

- Track 6 : Soto_67, SirBeauregard_71, Labeouficaum_70, Derpp_70, TyrionL_70
- Track 7 : Orwigg_69, Riverton_69, Manad_69, Grand2040_68, Etaye_69, Brilliant_73, Schueller_68, Megamind20_70, Giraffe_70, Haleema_69, AbsoluteMadLad_69, Kwadwo_69, Gareth_70, CharlieGBrown_68, Phleuron_68, KingTut_61, Caspiboi_69
- Track 8 : Thunderbird_70, Swiphy_72, TooFast2Furius_69, Windsor_70, PhatLouie_72, Inverness_68, Jiraiya_71, Solosis_68, MrPhizzler_73, SDcharge11_69, Larson_72, Flake_69
- Track 9 : ElvisPhasley_71, Daffy_69, Hamish_67, Chorkpop_71, MitKao_70
- Track 10 : Robyn_71, Aelin_69, Chipette_69, EmGer13_70, Usavi_71, Hekos_68, KLucky39_68, Suffolk_68, Lopsy_67, Newman_68, Antonia_69, Timmi_69, Vaishali24_71, Chunky_70, Triad_71, Carthage_70, Lehmann_72, Kloppinator_70, GreenChile_69, Tooj_68, Nacho_0073, Schadenfreude_70, KingVeVeVe_68
- Track 11 : Gophee_71
- Track 12 : Duggie_70, Charles1_71
- Track 13 : Numberten_69, Aonishiki_71, Lulwa_68, ShadowBud_71, Morty_71, Quisquiliae_72
- Track 14 : Olak_70, Xavier_70, PhatCats2014_71, OliverWalter_70, Cosmolli16_72, Childish_70, DaddyDaniels_73, Lego3393_68
- Track 15 : Oline_69
- Track 16 : IsaacEli_72, Kikipoo_72
- Track 17 : Frankicide_69
- Track 18 : Dingo_67, BlueHusk_71, CheetO_69, Daka_72, DirtJuice_70, Prickles_71, HSavage_68, Mikota_67, Sheila_66
- Track 19 : Squid_69
- Track 20 : Cornobble_68, SallyH_72, Colbert_68
- Track 21 : FluffyNinja_71, Yoshand_71, Pherdinand_71, BlackStallion_71
- Track 22 : Serendipity_70, Swish_71
- Track 23 : Toni_70
- Track 24 : Fringe_74, ShiVal_68, Vivaldi_70
- Track 25 : Imvubu_68
- Track 26 : Indlovu_68
- Track 27 : LittleMinkey_81
- Track 28 : Zenteno07_78
- Track 29 : Hashim76_76
- Track 30 : BirdsNest_78
- Track 31 : Phelemich_67, Reprobate_69
- Track 32 : Rita130_70, EastView9101_70, SirJeffery_70, Acadian_71
- Track 33 : Nangang_70
- Track 34 : Shenyu_71, DigitDog_71
- Track 35 : Rich_70
- Track 36 : Donny_72
- Track 37 : StinkyVeggy_70, KarasumaRum_70
- Track 38 : Suigeneris_72
- Track 39 : Reccee_71
- Track 40 : Serendipitous_69
- Track 41 : Saguaro_66
- Track 42 : Thonko_73
- Track 43 : Quesadilla_69
- Track 44 : PenguinLover67_68
- Track 45 : Funsized_71

- Track 46 : Rinkes_67
- Track 47 : Knocker_71

Summary of Final Annotations (See graph section above for start numbers):

The start number called the most often in the published annotations is 15, it was called in 290 of the 309 non-draft genes in the pham.

Genes that call this "Most Annotated" start:

- ABU_69, AbsoluteMadLad_69, Adriana_71, Aelin_69, Aleia_69, AltPhacts_68, Altwerkus_69, Anderson_72, Andre_72, AngelCake_69, Antonia_69, Aonishiki_71, Apizium_69, Ashraf_71, Badfish_71, Banjo_68, Basato_69, BatteryCK_68, Beaglebox_68, Bishoperium_70, BlackStallion_71, BlacksBerry_70, BlueHusk_71, Bluephacebaby_69, Boehler_69, BoogieWoogie_70, Brilliant_73, Buckeye_70, Burr_70, CamL_70, CampRoach_71, Cannibal_71, Carthage_70, Caspiboi_69, Chaelin_71, Chah_72, Charles1_71, CharlieGBrown_68, CheetO_69, Cher_70, Childish_70, Chipette_69, Chorkpop_71, Chuni_71, Chunky_70, Chute_70, Cobra_70, Colbert_68, Coletti_73, Cornbread_69, Cornobble_68, Cosmolli16_72, Craff_73, Crownjwl_68, DaddyDaniels_73, Daffy_69, Daka_72, Dati_67, DelRivs_68, Derpp_70, Dice_69, Dingo_67, Dione_68, DirtJuice_70, Doddsville_68, DoesntMatter_67, DoIOn_74, DonSancho_66, DuchessDung_69, Duggie_70, Durga_72, ElvisPhasley_71, EmGer13_70, Emiris_71, EmpTee_69, Eremos_69, Etaye_69, Eugenia_71, Fang_71, Flake_69, FleetyMac_73, FluffyNinja_71, Fozzie_68, Frankicide_69, FremontTroll_68, Freya_67, FriarPreacher_68, Fringe_74, FugateOSU_70, Gareth_70, GeneCoco_71, Giraffe_70, Gophee_71, Grand2040_68, GreenChile_69, Gwennie1_69, Gwilliam_71, Gyarad_0069, HSavage_68, Haimas_68, Haleema_69, Hamish_67, Happabalu_68, Hartsy_69, Harvey_67, Hekos_68, Held_68, HenryJackson_71, Hertubise_70, Hetaeria_70, HighStump_71, Hocus_68, HogWash_70, Horchata_67, ImtiyazSitla_71, Inchworm_71, Inverness_68, Iridessa_72, Iridoclysis_69, IsaacEli_72, JDog_69, JacAttac_70, JakeO_71, JangoPhett_68, Jesabah_72, Jillium_71, Jiminy_70, Jiraiya_71, KLucky39_68, Kahve_71, Kailash_68, Karn_70, Katniss_72, Keitherie_73, Khan1_70, Kikipoo_72, Kimbrough_71, KingTut_61, KingVeVeVe_68, KlimbOn_69, Kloppinator_70, Kwadwo_69, Kwksand96_71, Labeouficaum_70, Larson_72, LasagnaCat_71, Lasso_69, LeeLot_69, Lego3393_68, Legolas_71, Lehmann_72, LeiMonet_73, LemonSlice_70, Longacauda_71, Lopsy_67, LostAndPhound_69, LuckyMarjie_67, Lulumae_67, Lulwa_68, Lumine_71, MRabcd_70, Mag7_68, Magic8_69, Mana_69, Manad_69, Maru_70, Maskar_71, Matalotodo_69, Mcshane_69, Mecca_70, Megamind20_70, Megatron_71, Melc17_67, MelsMeow_69, Mesh1_71, Mesmerelda_69, MichaelPhcott_68, Mikota_67, MiniBoss_67, MitKao_70, Morgushi_68, Morty_71, Mosaic_68, MrPhizzler_73, Mulan_69, Murdoc_67, Mutante_71, Nacho_0073, Nathan_71, Newman_68, NiaNia_71, Nicole21_71, Nova1_70, Numberten_69, Nyala_69, OSmaximus_70, Olak_70, Oline_69, Olive_68, OliverWalter_70, Omniscient_71, OneBrain_73, Oosterbaan_70, Orfeu_69, Orion_70, Orwig_69, PG1_70, Pacifista_69, PallasAthena_71, PenguinLover67_68, Phamished_71, Phareon_68, PhatCats2014_71, PhatLouie_72, PhenghisKhan_70, Pherdinand_71, Phergie_70, Phipps_70, Phleuron_68, PhrankReynolds_69, PhrodoBaggins_72, Phunky_68, Piglet_0071, PinheadLarry_69, Pinkman_70, Pipsqueak_67, Placalicious_70, Plata_69, Plmatters_68, Podrick_69, Pops_68, Potter_67, Prickles_71,

ProfessorX_68, Puhltonio_68, QueenBeane_70, Quesadilla_69, Quisquiliae_72, RedMaple_70, RedRaider89_69, Ricotta_70, Riggan_71, Rimu_70, Riverton_69, Robyn_71, Roliet_67, Roscoe_70, Roy17_68, SDcharge11_69, SallyH_72, Samaymay_70, SassyCat97_68, Schadenfreude_70, Schueller_68, Scoot17C_71, Scrick_69, Selr12_71, Serendipity_70, Serpentine_0071, ShadowBud_71, Sheila_66, ShiVal_68, Sigman_70, SilverBell_71, Simielle_70, SirBeauregard_71, Skippy_72, Slatt_70, Soile_71, Solosis_68, Sophia_68, Soto_67, Spartan300_69, Squid_69, Squiggle_69, Struggle_70, Suffolk_68, Surely_70, Swiphy_72, Swish_71, TallGrassMM_69, Taraxa_70, Telesworld_68, Thora_69, ThreeOh3D2_72, Thunderbird_70, Timmi_69, TomBombadil_70, Tomlarah_71, Toni_70, TooFast2Furius_69, Tooj_68, Triad_71, True_68, Trypo_71, TyrionL_70, UAch1_71, UncleHowie_67, Usavi_71, Vaishali24_71, Valjean_69, Vaticameos_67, Veritas_69, Virapocalypse_71, Virgeve_68, Vista_69, Vivaldi_70, Vortex_69, Wallhey_71, Waterdiva_71, Weher20_67, Windsor_70, Xavier_70, Yoshand_71, YouGoGlencoco_70, Zaider_71, Zelda_70, Zonia_71,

Genes that have the "Most Annotated" start but do not call it:

-

Genes that do not have the "Most Annotated" start:

- Acadian_71, BirdsNest_78, DigitDog_71, Donny_72, EastView9101_70, Funsized_71, Hashim76_76, Imvubu_68, Indlovu_68, KarasumaRum_70, Knocker_71, LittleMinkey_81, Nangang_70, Phelemich_67, Reccee_71, Reprobate_69, Rich_70, Rinkes_67, Rita130_70, Saguaro_66, Serendipitous_69, Shenyu_71, SirJeffery_70, StinkyVeggy_70, Suigeneris_72, Thonko_73, Zenteno07_78,

Summary by start number:

Start 13:

- Found in 8 of 345 (2.3%) of genes in pham
- Manual Annotations of this start: 7 of 309
- Called 100.0% of time when present
- Phage (with cluster) where this start called: BirdsNest_78 (B13), Funsized_71 (B9), Hashim76_76 (B13), Knocker_71 (B9), LittleMinkey_81 (B13), Rinkes_67 (B9), Thonko_73 (B8), Zenteno07_78 (B13),

Start 14:

- Found in 2 of 345 (0.6%) of genes in pham
- Manual Annotations of this start: 1 of 309
- Called 50.0% of time when present
- Phage (with cluster) where this start called: Imvubu_68 (B10),

Start 15:

- Found in 318 of 345 (92.2%) of genes in pham
- Manual Annotations of this start: 290 of 309
- Called 100.0% of time when present
- Phage (with cluster) where this start called: ABU_69 (B1), AbsoluteMadLad_69 (B1), Adriana_71 (B1), Aelin_69 (B1), Aleia_69 (B1), AltPhacts_68 (B1), Altwerkus_69 (B1), Anderson_72 (B1), Andre_72 (B1), AngelCake_69 (B1), Antonia_69 (B1), Aonishiki_71 (B1), Apizium_69 (B1), Ashraf_71 (B1), Badfish_71 (B1), Banjo_68 (B1), Basato_69 (B1), BatteryCK_68 (B1), Beaglebox_68 (B1), Bishoperium_70 (B1), BlackStallion_71 (B1), BlacksBerry_70 (B1), BlueHusk_71 (B1), Bluephacebaby_69

(B1), Boehler_69 (B1), BoogieWoogie_70 (B1), Brilliant_73 (B1), Buckeye_70 (B1), Burr_70 (B1), CamL_70 (B1), CampRoach_71 (B1), Cannibal_71 (B1), Carthage_70 (B1), Caspiboi_69 (B1), Chaelin_71 (B1), Chah_72 (B1), Charles1_71 (B1), CharlieGBrown_68 (B1), CheetO_69 (B1), Cher_70 (B1), Childish_70 (B1), Chipette_69 (B1), Chorkpop_71 (B1), Chuni_71 (B1), Chunky_70 (B1), Chute_70 (B1), Cobra_70 (B1), Colbert_68 (B1), Coletti_73 (B1), Cornbread_69 (B1), Cornobble_68 (B1), Cosmolli16_72 (B1), Craff_73 (B1), Crownjwl_68 (B1), DaddyDaniels_73 (B1), Daffy_69 (B1), Daka_72 (B1), Dati_67 (B1), DelRivs_68 (B1), Derpp_70 (B1), Dice_69 (B1), Dingo_67 (B1), Dione_68 (B1), DirtJuice_70 (B1), Doddsville_68 (B1), DoesntMatter_67 (B1), DolOn_74 (B1), DonSanchon_66 (B1), DuchessDung_69 (B1), Duggie_70 (B1), Durga_72 (B1), ElvisPhasley_71 (B1), EmGer13_70 (B1), Emiris_71 (B1), EmpTee_69 (B1), Eremos_69 (B1), Etaye_69 (B1), Eugenia_71 (B1), Fang_71 (B1), Flake_69 (B1), FleetyMac_73 (B1), FluffyNinja_71 (B1), Fozzie_68 (B1), Frankicide_69 (B1), FremontTroll_68 (B1), Freya_67 (B1), FriarPreacher_68 (B1), Fringe_74 (B1), FugateOSU_70 (B1), Gareth_70 (B1), GeneCoco_71 (B1), Giraffe_70 (B1), Gophee_71 (B1), Grand2040_68 (B1), GreenChile_69 (B1), Gwennie1_69 (B1), Gwilliam_71 (B1), Gyarad_0069 (B1), HSavage_68 (B1), Haimas_68 (B1), Haleema_69 (B1), Hamish_67 (B1), Happabalu_68 (B1), Hartsy_69 (B1), Harvey_67 (B1), Hekos_68 (B1), Held_68 (B1), HenryJackson_71 (B1), Hertubise_70 (B1), Hetaeria_70 (B1), HighStump_71 (B1), Hocus_68 (B1), HogWash_70 (B1), Horchata_67 (B1), ImtiyazSitla_71 (B1), Inchworm_71 (B1), Inverness_68 (B1), Iridessa_72 (B1), Iridoclysis_69 (B1), IsaacEli_72 (B1), JDog_69 (B1), JacAttac_70 (B1), JakeO_71 (B1), JangoPhett_68 (B1), Jesabah_72 (B1), Jillium_71 (B1), Jiminy_70 (B1), Jiraiya_71 (B1), KLucky39_68 (B1), Kahve_71 (B1), Kailash_68 (B1), Karn_70 (B1), Katniss_72 (B1), Keitherie_73 (B1), Khan1_70 (B1), Kikipoo_72 (B1), Kimbrough_71 (B1), KingTut_61 (B1), KingVeVeVe_68 (B1), KlimbOn_69 (B1), Kloppinator_70 (B1), Kwadwo_69 (B1), Kwksand96_71 (B1), Labeouficaum_70 (B1), Larson_72 (B1), LasagnaCat_71 (B1), Lasso_69 (B1), LeeLot_69 (B1), Lego3393_68 (B1), Legolas_71 (B1), Lehmann_72 (B1), LeiMonet_73 (B1), LemonSlice_70 (B1), Longacauda_71 (B1), Lopsy_67 (B1), LostAndPhound_69 (B1), LuckyMarjie_67 (B1), Lulumae_67 (B1), Lulwa_68 (B1), Lumine_71 (B1), MRabcd_70 (B1), Mag7_68 (B1), Magic8_69 (B1), Mana_69 (B1), Manad_69 (B1), Maru_70 (B1), Maskar_71 (B1), Matalotodo_69 (B1), Mcshane_69 (B1), Mecca_70 (B1), Megamind20_70 (B1), Megatron_71 (B1), Melc17_67 (B1), MelsMeow_69 (B1), Mesh1_71 (B1), Mesmerelda_69 (B1), MichaelPhcott_68 (B1), Mikota_67 (B1), MiniBoss_67 (B1), MitKao_70 (B1), Morgushi_68 (B1), Morty_71 (B1), Mosaic_68 (B1), MrPhizzler_73 (B1), Mulan_69 (B1), Murdoc_67 (B1), Mutante_71 (B1), Nacho_0073 (B1), Nathan_71 (B1), Newman_68 (B1), NiaNia_71 (B1), Nicole21_71 (B1), Nova1_70 (B1), Numberten_69 (B1), Nyala_69 (B1), OSmaximus_70 (B1), Olak_70 (B1), Oline_69 (B1), Olive_68 (B1), OliverWalter_70 (B1), Omniscient_71 (B1), OneBrain_73 (B1), Oosterbaan_70 (B1), Orfeu_69 (B1), Orion_70 (B1), Orwigg_69 (B1), PG1_70 (B1), Pacifista_69 (B1), PallasAthena_71 (B1), PenguinLover67_68 (B9), Phamished_71 (B1), Phareon_68 (B1), PhatCats2014_71 (B1), PhatLouie_72 (B1), PhenghisKhan_70 (B1), Pherdinand_71 (B1), Phergie_70 (B1), Phipps_70 (B1), Phleuron_68 (B1), PhrankReynolds_69 (B1), PhrodoBaggins_72 (B1), Phunky_68 (B1), Piglet_0071 (B1), PinheadLarry_69 (B1), Pinkman_70 (B1), Pipsqueak_67 (B1), Placalicious_70 (B1), Plata_69 (B1), Plmatters_68 (B1), Podrick_69 (B1), Pops_68 (B1), Potter_67 (B1), Prickles_71 (B1), ProfessorX_68 (B1), Puhltonio_68 (B1), QueenBeane_70 (B1), Quesadilla_69 (B9), Quisquilliae_72 (B1), RedMaple_70 (B1), RedRaider89_69 (B1), Ricotta_70 (B1), Riggan_71 (B1), Rimu_70 (B1), Riverton_69 (B1), Robyn_71 (B1), Roliet_67 (B1), Roscoe_70 (B1), Roy17_68 (B1), SDcharge11_69 (B1), SallyH_72 (B1), Samaymay_70 (B1), SassyCat97_68 (B1),

Schadenfreude_70 (B1), Schueller_68 (B1), Scoot17C_71 (B1), Scrick_69 (B1), Selr12_71 (B1), Serendipity_70 (B1), Serpentine_0071 (B1), ShadowBud_71 (B1), Sheila_66 (B1), ShiVal_68 (B1), Sigman_70 (B1), SilverBell_71 (B1), Simielle_70 (B1), SirBeauregard_71 (B1), Skippy_72 (B1), Slatt_70 (B1), Soile_71 (B1), Solosis_68 (B1), Sophia_68 (B1), Soto_67 (B1), Spartan300_69 (B1), Squid_69 (B1), Squiggle_69 (B1), Struggle_70 (B1), Suffolk_68 (B1), Surely_70 (B1), Swiphy_72 (B1), Swish_71 (B1), TallGrassMM_69 (B1), Taraxa_70 (B1), Telesworld_68 (B1), Thora_69 (B1), ThreeOh3D2_72 (B1), Thunderbird_70 (B1), Timmi_69 (B1), TomBombadil_70 (B1), Tomlarah_71 (B1), Toni_70 (B1), TooFast2Furius_69 (B1), Tooj_68 (B1), Triad_71 (B1), True_68 (B1), Trypo_71 (B1), TyrionL_70 (B1), UAch1_71 (B1), UncleHowie_67 (B1), Usavi_71 (B1), Vaishali24_71 (B1), Valjean_69 (B1), Vaticameos_67 (B1), Veritas_69 (B1), Virapocalypse_71 (B1), Virgeve_68 (B1), Vista_69 (B1), Vivaldi_70 (B1), Vortex_69 (B1), Wallhey_71 (B1), Waterdiva_71 (B1), Weher20_67 (B1), Windsor_70 (B1), Xavier_70 (B1), Yoshand_71 (B1), YouGoGlencoco_70 (B1), Zaider_71 (B1), Zelda_70 (B1), Zonia_71 (B1),

Start 18:

- Found in 3 of 345 (0.9%) of genes in pham
- Manual Annotations of this start: 1 of 309
- Called 33.3% of time when present
- Phage (with cluster) where this start called: Indlovu_68 (B11),

Start 19:

- Found in 1 of 345 (0.3%) of genes in pham
- Manual Annotations of this start: 1 of 309
- Called 100.0% of time when present
- Phage (with cluster) where this start called: Saguaro_66 (B7),

Start 20:

- Found in 18 of 345 (5.2%) of genes in pham
- Manual Annotations of this start: 9 of 309
- Called 88.9% of time when present
- Phage (with cluster) where this start called: Acadian_71 (B5), DigitDog_71 (B5), Donny_72 (B5), EastView9101_70 (B5), KarasumaRum_70 (B5), Nangang_70 (B5), Phelemich_67 (B5), Reccee_71 (B5), Reprobate_69 (B5), Rich_70 (B5), Rita130_70 (B5), Serendipitous_69 (B5), Shenyu_71 (B5), SirJeffery_70 (B5), StinkyVeggy_70 (B5), Suigeneris_72 (B5),

Summary by clusters:

There are 8 clusters represented in this pham: B5, B7, B13, B10, B11, B8, B9, B1,

Info for manual annotations of cluster B1:

- Start number 15 was manually annotated 288 times for cluster B1.

Info for manual annotations of cluster B10:

- Start number 14 was manually annotated 1 time for cluster B10.

Info for manual annotations of cluster B11:

- Start number 18 was manually annotated 1 time for cluster B11.

Info for manual annotations of cluster B13:

- Start number 13 was manually annotated 3 times for cluster B13.

Info for manual annotations of cluster B5:

- Start number 20 was manually annotated 9 times for cluster B5.

Info for manual annotations of cluster B7:

- Start number 19 was manually annotated 1 time for cluster B7.

Info for manual annotations of cluster B8:

- Start number 13 was manually annotated 1 time for cluster B8.

Info for manual annotations of cluster B9:

- Start number 13 was manually annotated 3 times for cluster B9.
- Start number 15 was manually annotated 2 times for cluster B9.

Gene Information:

Gene: ABU_69 Start: 57848, Stop: 58543, Start Num: 15

Candidate Starts for ABU_69:

(Start: 15 @57848 has 290 MA's), (26, 57938), (28, 57947), (29, 57953), (31, 57989), (32, 57995), (34, 58010), (41, 58064), (42, 58067), (46, 58088), (48, 58103), (50, 58124), (59, 58214), (64, 58262), (72, 58442),

Gene: AbsoluteMadLad_69 Start: 57803, Stop: 58510, Start Num: 15

Candidate Starts for AbsoluteMadLad_69:

(Start: 15 @57803 has 290 MA's), (26, 57893), (28, 57902), (29, 57908), (31, 57944), (32, 57950), (34, 57965), (41, 58019), (42, 58022), (46, 58043), (48, 58058), (50, 58079), (59, 58169), (64, 58217),

Gene: Acadian_71 Start: 59118, Stop: 59765, Start Num: 20

Candidate Starts for Acadian_71:

(9, 59004), (Start: 20 @59118 has 9 MA's), (32, 59241), (34, 59256), (35, 59268), (44, 59322), (45, 59328), (47, 59346), (50, 59370), (51, 59373), (56, 59442), (57, 59454), (60, 59463), (62, 59481), (66, 59589),

Gene: Adriana_71 Start: 58383, Stop: 59081, Start Num: 15

Candidate Starts for Adriana_71:

(Start: 15 @58383 has 290 MA's), (26, 58473), (28, 58482), (29, 58488), (31, 58524), (32, 58530), (34, 58545), (41, 58599), (42, 58602), (46, 58623), (48, 58638), (50, 58659), (59, 58749), (64, 58797),

Gene: Aelin_69 Start: 57368, Stop: 58066, Start Num: 15

Candidate Starts for Aelin_69:

(Start: 15 @57368 has 290 MA's), (26, 57458), (28, 57467), (31, 57509), (32, 57515), (34, 57530), (41, 57584), (42, 57587), (46, 57608), (48, 57623), (50, 57644), (59, 57734), (64, 57782),

Gene: Aleia_69 Start: 57478, Stop: 58188, Start Num: 15

Candidate Starts for Aleia_69:

(Start: 15 @57478 has 290 MA's), (26, 57568), (28, 57577), (29, 57583), (31, 57619), (32, 57625), (34, 57640), (41, 57694), (42, 57697), (46, 57718), (48, 57733), (50, 57754), (59, 57844), (64, 57892),

Gene: AltPhacts_68 Start: 56900, Stop: 57595, Start Num: 15

Candidate Starts for AltPhacts_68:

(Start: 15 @56900 has 290 MA's), (26, 56990), (28, 56999), (29, 57005), (31, 57041), (32, 57047), (34, 57062), (41, 57116), (42, 57119), (46, 57140), (48, 57155), (50, 57176), (59, 57266), (64, 57314), (72, 57494),

Gene: Altwerkus_69 Start: 57155, Stop: 57862, Start Num: 15

Candidate Starts for Altwerkus_69:

(Start: 15 @57155 has 290 MA's), (26, 57245), (28, 57254), (29, 57260), (31, 57296), (32, 57302), (34, 57317), (41, 57371), (42, 57374), (46, 57395), (48, 57410), (50, 57431), (59, 57521), (64, 57569),

Gene: Anderson_72 Start: 57727, Stop: 58422, Start Num: 15

Candidate Starts for Anderson_72:

(Start: 15 @57727 has 290 MA's), (26, 57817), (28, 57826), (29, 57832), (31, 57868), (32, 57874), (34, 57889), (41, 57943), (42, 57946), (46, 57967), (48, 57982), (50, 58003), (59, 58093), (64, 58141),

Gene: Andre_72 Start: 57733, Stop: 58440, Start Num: 15

Candidate Starts for Andre_72:

(Start: 15 @57733 has 290 MA's), (26, 57823), (28, 57832), (29, 57838), (31, 57874), (32, 57880), (34, 57895), (41, 57949), (42, 57952), (46, 57973), (48, 57988), (50, 58009), (59, 58099), (64, 58147),

Gene: AngelCake_69 Start: 57470, Stop: 58165, Start Num: 15

Candidate Starts for AngelCake_69:

(Start: 15 @57470 has 290 MA's), (26, 57560), (28, 57569), (29, 57575), (31, 57611), (32, 57617), (34, 57632), (41, 57686), (42, 57689), (46, 57710), (48, 57725), (50, 57746), (59, 57836), (64, 57884),

Gene: Antonia_69 Start: 57367, Stop: 58065, Start Num: 15

Candidate Starts for Antonia_69:

(Start: 15 @57367 has 290 MA's), (26, 57457), (28, 57466), (31, 57508), (32, 57514), (34, 57529), (41, 57583), (42, 57586), (46, 57607), (48, 57622), (50, 57643), (59, 57733), (64, 57781),

Gene: Aonishiki_71 Start: 57647, Stop: 58354, Start Num: 15

Candidate Starts for Aonishiki_71:

(Start: 15 @57647 has 290 MA's), (26, 57737), (28, 57746), (31, 57788), (32, 57794), (34, 57809), (41, 57863), (42, 57866), (46, 57887), (48, 57902), (50, 57923), (59, 58013),

Gene: Apizium_69 Start: 56999, Stop: 57709, Start Num: 15

Candidate Starts for Apizium_69:

(Start: 15 @56999 has 290 MA's), (26, 57089), (28, 57098), (29, 57104), (31, 57140), (32, 57146), (34, 57161), (41, 57215), (42, 57218), (46, 57239), (48, 57254), (50, 57275), (59, 57365), (64, 57413),

Gene: Ashraf_71 Start: 57709, Stop: 58416, Start Num: 15

Candidate Starts for Ashraf_71:

(Start: 15 @57709 has 290 MA's), (26, 57799), (28, 57808), (29, 57814), (31, 57850), (32, 57856), (34, 57871), (41, 57925), (42, 57928), (46, 57949), (48, 57964), (50, 57985), (59, 58075), (64, 58123),

Gene: Badfish_71 Start: 58013, Stop: 58720, Start Num: 15

Candidate Starts for Badfish_71:

(Start: 15 @58013 has 290 MA's), (26, 58103), (28, 58112), (29, 58118), (31, 58154), (32, 58160), (34, 58175), (41, 58229), (42, 58232), (46, 58253), (48, 58268), (50, 58289), (59, 58379), (64, 58427),

Gene: Banjo_68 Start: 57312, Stop: 58007, Start Num: 15

Candidate Starts for Banjo_68:

(Start: 15 @57312 has 290 MA's), (26, 57402), (28, 57411), (29, 57417), (31, 57453), (32, 57459), (34, 57474), (41, 57528), (42, 57531), (46, 57552), (48, 57567), (50, 57588), (59, 57678), (64, 57726), (72,

57906),

Gene: Basato_69 Start: 57588, Stop: 58292, Start Num: 15

Candidate Starts for Basato_69:

(Start: 15 @57588 has 290 MA's), (26, 57678), (28, 57687), (29, 57693), (31, 57729), (32, 57735), (34, 57750), (41, 57804), (42, 57807), (46, 57828), (48, 57843), (50, 57864), (59, 57954), (64, 58002), (72, 58182),

Gene: BatteryCK_68 Start: 57282, Stop: 57980, Start Num: 15

Candidate Starts for BatteryCK_68:

(Start: 15 @57282 has 290 MA's), (26, 57372), (28, 57381), (29, 57387), (31, 57423), (32, 57429), (34, 57444), (41, 57498), (42, 57501), (46, 57522), (48, 57537), (50, 57558), (59, 57648), (64, 57696),

Gene: Beaglebox_68 Start: 57423, Stop: 58118, Start Num: 15

Candidate Starts for Beaglebox_68:

(Start: 15 @57423 has 290 MA's), (26, 57513), (28, 57522), (29, 57528), (31, 57564), (32, 57570), (34, 57585), (41, 57639), (42, 57642), (46, 57663), (48, 57678), (50, 57699), (59, 57789), (64, 57837), (72, 58017),

Gene: BirdsNest_78 Start: 59998, Stop: 60927, Start Num: 13

Candidate Starts for BirdsNest_78:

(Start: 13 @59998 has 7 MA's), (26, 60094), (33, 60157), (39, 60202), (47, 60256), (49, 60271), (50, 60280), (51, 60283), (59, 60370), (73, 60643),

Gene: Bishoperium_70 Start: 57867, Stop: 58562, Start Num: 15

Candidate Starts for Bishoperium_70:

(Start: 15 @57867 has 290 MA's), (26, 57957), (28, 57966), (29, 57972), (31, 58008), (32, 58014), (34, 58029), (41, 58083), (42, 58086), (46, 58107), (48, 58122), (50, 58143), (59, 58233), (64, 58281), (72, 58461),

Gene: BlackStallion_71 Start: 57756, Stop: 58454, Start Num: 15

Candidate Starts for BlackStallion_71:

(Start: 15 @57756 has 290 MA's), (26, 57846), (28, 57855), (31, 57897), (32, 57903), (34, 57918), (41, 57972), (42, 57975), (46, 57996), (48, 58011), (50, 58032), (59, 58122), (64, 58170), (70, 58323),

Gene: BlacksBerry_70 Start: 57230, Stop: 57937, Start Num: 15

Candidate Starts for BlacksBerry_70:

(Start: 15 @57230 has 290 MA's), (26, 57320), (28, 57329), (29, 57335), (31, 57371), (32, 57377), (34, 57392), (41, 57446), (42, 57449), (46, 57470), (48, 57485), (50, 57506), (59, 57596), (64, 57644),

Gene: BlueHusk_71 Start: 57368, Stop: 58063, Start Num: 15

Candidate Starts for BlueHusk_71:

(Start: 15 @57368 has 290 MA's), (26, 57458), (28, 57467), (31, 57509), (32, 57515), (34, 57530), (41, 57584), (42, 57587), (46, 57608), (48, 57623), (50, 57644), (59, 57734), (64, 57782), (72, 57962),

Gene: Bluephacebaby_69 Start: 57900, Stop: 58595, Start Num: 15

Candidate Starts for Bluephacebaby_69:

(Start: 15 @57900 has 290 MA's), (26, 57990), (28, 57999), (29, 58005), (31, 58041), (32, 58047), (34, 58062), (41, 58116), (42, 58119), (46, 58140), (48, 58155), (50, 58176), (59, 58266), (64, 58314), (72, 58494),

Gene: Boehler_69 Start: 57515, Stop: 58222, Start Num: 15

Candidate Starts for Boehler_69:

(Start: 15 @57515 has 290 MA's), (26, 57605), (28, 57614), (29, 57620), (31, 57656), (32, 57662), (34, 57677), (41, 57731), (42, 57734), (46, 57755), (48, 57770), (50, 57791), (59, 57881), (64, 57929),

Gene: BoogieWoogie_70 Start: 57333, Stop: 58028, Start Num: 15

Candidate Starts for BoogieWoogie_70:

(Start: 15 @57333 has 290 MA's), (26, 57423), (28, 57432), (29, 57438), (31, 57474), (32, 57480), (34, 57495), (41, 57549), (42, 57552), (46, 57573), (48, 57588), (50, 57609), (59, 57699), (64, 57747), (72, 57927),

Gene: Brilliant_73 Start: 57866, Stop: 58573, Start Num: 15

Candidate Starts for Brilliant_73:

(Start: 15 @57866 has 290 MA's), (26, 57956), (28, 57965), (29, 57971), (31, 58007), (32, 58013), (34, 58028), (41, 58082), (42, 58085), (46, 58106), (48, 58121), (50, 58142), (59, 58232), (64, 58280),

Gene: Buckeye_70 Start: 58402, Stop: 59109, Start Num: 15

Candidate Starts for Buckeye_70:

(Start: 15 @58402 has 290 MA's), (26, 58492), (28, 58501), (29, 58507), (31, 58543), (32, 58549), (34, 58564), (41, 58618), (42, 58621), (46, 58642), (48, 58657), (50, 58678), (59, 58768), (64, 58816),

Gene: Burr_70 Start: 57333, Stop: 58028, Start Num: 15

Candidate Starts for Burr_70:

(Start: 15 @57333 has 290 MA's), (26, 57423), (28, 57432), (29, 57438), (31, 57474), (32, 57480), (34, 57495), (41, 57549), (42, 57552), (46, 57573), (48, 57588), (50, 57609), (59, 57699), (64, 57747), (72, 57927),

Gene: CamL_70 Start: 57635, Stop: 58330, Start Num: 15

Candidate Starts for CamL_70:

(Start: 15 @57635 has 290 MA's), (26, 57725), (28, 57734), (29, 57740), (31, 57776), (32, 57782), (34, 57797), (41, 57851), (42, 57854), (46, 57875), (48, 57890), (50, 57911), (59, 58001), (64, 58049), (72, 58229),

Gene: CampRoach_71 Start: 57742, Stop: 58440, Start Num: 15

Candidate Starts for CampRoach_71:

(Start: 15 @57742 has 290 MA's), (26, 57832), (28, 57841), (29, 57847), (31, 57883), (32, 57889), (34, 57904), (41, 57958), (42, 57961), (46, 57982), (48, 57997), (50, 58018), (59, 58108), (64, 58156),

Gene: Cannibal_71 Start: 57751, Stop: 58446, Start Num: 15

Candidate Starts for Cannibal_71:

(Start: 15 @57751 has 290 MA's), (26, 57841), (28, 57850), (29, 57856), (31, 57892), (32, 57898), (34, 57913), (41, 57967), (42, 57970), (46, 57991), (48, 58006), (50, 58027), (59, 58117), (64, 58165),

Gene: Carthage_70 Start: 57271, Stop: 57969, Start Num: 15

Candidate Starts for Carthage_70:

(Start: 15 @57271 has 290 MA's), (26, 57361), (28, 57370), (31, 57412), (32, 57418), (34, 57433), (41, 57487), (42, 57490), (46, 57511), (48, 57526), (50, 57547), (59, 57637), (64, 57685),

Gene: Caspiboi_69 Start: 57575, Stop: 58282, Start Num: 15

Candidate Starts for Caspiboi_69:

(Start: 15 @57575 has 290 MA's), (26, 57665), (28, 57674), (29, 57680), (31, 57716), (32, 57722), (34, 57737), (41, 57791), (42, 57794), (46, 57815), (48, 57830), (50, 57851), (59, 57941), (64, 57989),

Gene: Chaelin_71 Start: 57866, Stop: 58573, Start Num: 15

Candidate Starts for Chaelin_71:

(Start: 15 @57866 has 290 MA's), (26, 57956), (28, 57965), (29, 57971), (31, 58007), (32, 58013), (34, 58028), (41, 58082), (42, 58085), (46, 58106), (48, 58121), (50, 58142), (59, 58232), (64, 58280),

Gene: Chah_72 Start: 57454, Stop: 58161, Start Num: 15

Candidate Starts for Chah_72:

(Start: 15 @57454 has 290 MA's), (26, 57544), (28, 57553), (29, 57559), (31, 57595), (32, 57601), (34, 57616), (41, 57670), (42, 57673), (46, 57694), (48, 57709), (50, 57730), (59, 57820), (64, 57868),

Gene: Charles1_71 Start: 57641, Stop: 58348, Start Num: 15

Candidate Starts for Charles1_71:

(Start: 15 @57641 has 290 MA's), (26, 57731), (28, 57740), (31, 57782), (32, 57788), (34, 57803), (41, 57857), (42, 57860), (46, 57881), (48, 57896), (50, 57917), (59, 58007), (64, 58055),

Gene: CharlieGBrown_68 Start: 57257, Stop: 57955, Start Num: 15

Candidate Starts for CharlieGBrown_68:

(Start: 15 @57257 has 290 MA's), (26, 57347), (28, 57356), (29, 57362), (31, 57398), (32, 57404), (34, 57419), (41, 57473), (42, 57476), (46, 57497), (48, 57512), (50, 57533), (59, 57623), (64, 57671),

Gene: CheetO_69 Start: 57583, Stop: 58278, Start Num: 15

Candidate Starts for CheetO_69:

(Start: 15 @57583 has 290 MA's), (26, 57673), (28, 57682), (31, 57724), (32, 57730), (34, 57745), (41, 57799), (42, 57802), (46, 57823), (48, 57838), (50, 57859), (59, 57949), (64, 57997), (72, 58177),

Gene: Cher_70 Start: 57832, Stop: 58539, Start Num: 15

Candidate Starts for Cher_70:

(Start: 15 @57832 has 290 MA's), (26, 57922), (28, 57931), (29, 57937), (31, 57973), (32, 57979), (34, 57994), (41, 58048), (42, 58051), (46, 58072), (48, 58087), (50, 58108), (59, 58198), (64, 58246),

Gene: Childish_70 Start: 58030, Stop: 58737, Start Num: 15

Candidate Starts for Childish_70:

(Start: 15 @58030 has 290 MA's), (26, 58120), (28, 58129), (29, 58135), (31, 58171), (32, 58177), (34, 58192), (41, 58246), (42, 58249), (46, 58270), (48, 58285), (50, 58306), (59, 58396), (64, 58444), (72, 58624),

Gene: Chipette_69 Start: 57576, Stop: 58283, Start Num: 15

Candidate Starts for Chipette_69:

(Start: 15 @57576 has 290 MA's), (26, 57666), (28, 57675), (31, 57717), (32, 57723), (34, 57738), (41, 57792), (42, 57795), (46, 57816), (48, 57831), (50, 57852), (59, 57942), (64, 57990),

Gene: Chorkpop_71 Start: 57493, Stop: 58200, Start Num: 15

Candidate Starts for Chorkpop_71:

(Start: 15 @57493 has 290 MA's), (26, 57583), (28, 57592), (31, 57634), (32, 57640), (34, 57655), (41, 57709), (42, 57712), (46, 57733), (48, 57748), (50, 57769), (59, 57859), (64, 57907),

Gene: Chuni_71 Start: 58094, Stop: 58789, Start Num: 15

Candidate Starts for Chuni_71:

(Start: 15 @58094 has 290 MA's), (26, 58184), (28, 58193), (29, 58199), (31, 58235), (32, 58241), (34, 58256), (41, 58310), (42, 58313), (46, 58334), (48, 58349), (50, 58370), (59, 58460), (64, 58508),

Gene: Chunky_70 Start: 57200, Stop: 57898, Start Num: 15

Candidate Starts for Chunky_70:

(Start: 15 @57200 has 290 MA's), (26, 57290), (28, 57299), (31, 57341), (32, 57347), (34, 57362), (41, 57416), (42, 57419), (46, 57440), (48, 57455), (50, 57476), (59, 57566), (64, 57614),

Gene: Chute_70 Start: 57894, Stop: 58592, Start Num: 15

Candidate Starts for Chute_70:

(Start: 15 @57894 has 290 MA's), (26, 57984), (28, 57993), (29, 57999), (31, 58035), (32, 58041), (34, 58056), (41, 58110), (42, 58113), (46, 58134), (48, 58149), (50, 58170), (59, 58260), (64, 58308),

Gene: Cobra_70 Start: 57863, Stop: 58570, Start Num: 15

Candidate Starts for Cobra_70:

(Start: 15 @57863 has 290 MA's), (26, 57953), (28, 57962), (29, 57968), (31, 58004), (32, 58010), (34, 58025), (41, 58079), (42, 58082), (46, 58103), (48, 58118), (50, 58139), (59, 58229), (64, 58277),

Gene: Colbert_68 Start: 56922, Stop: 57620, Start Num: 15

Candidate Starts for Colbert_68:

(Start: 15 @56922 has 290 MA's), (26, 57012), (28, 57021), (31, 57063), (32, 57069), (34, 57084), (41, 57138), (42, 57141), (46, 57162), (48, 57177), (50, 57198), (59, 57288),

Gene: Coletti_73 Start: 58394, Stop: 59092, Start Num: 15

Candidate Starts for Coletti_73:

(Start: 15 @58394 has 290 MA's), (26, 58484), (28, 58493), (29, 58499), (31, 58535), (32, 58541), (34, 58556), (41, 58610), (42, 58613), (46, 58634), (48, 58649), (50, 58670), (59, 58760), (64, 58808),

Gene: Cornbread_69 Start: 57532, Stop: 58230, Start Num: 15

Candidate Starts for Cornbread_69:

(Start: 15 @57532 has 290 MA's), (26, 57622), (28, 57631), (29, 57637), (31, 57673), (32, 57679), (34, 57694), (41, 57748), (42, 57751), (46, 57772), (48, 57787), (50, 57808), (59, 57898), (64, 57946),

Gene: Cornobble_68 Start: 57357, Stop: 58055, Start Num: 15

Candidate Starts for Cornobble_68:

(Start: 15 @57357 has 290 MA's), (26, 57447), (28, 57456), (31, 57498), (32, 57504), (34, 57519), (41, 57573), (42, 57576), (46, 57597), (48, 57612), (50, 57633), (59, 57723),

Gene: Cosmolli16_72 Start: 58211, Stop: 58915, Start Num: 15

Candidate Starts for Cosmolli16_72:

(Start: 15 @58211 has 290 MA's), (26, 58301), (28, 58310), (29, 58316), (31, 58352), (32, 58358), (34, 58373), (41, 58427), (42, 58430), (46, 58451), (48, 58466), (50, 58487), (59, 58577), (64, 58625), (72, 58805),

Gene: Craff_73 Start: 58266, Stop: 58961, Start Num: 15

Candidate Starts for Craff_73:

(Start: 15 @58266 has 290 MA's), (26, 58356), (28, 58365), (29, 58371), (31, 58407), (32, 58413), (34, 58428), (41, 58482), (42, 58485), (46, 58506), (48, 58521), (50, 58542), (59, 58632), (64, 58680), (72, 58860),

Gene: Crownjwl_68 Start: 57355, Stop: 58062, Start Num: 15

Candidate Starts for Crownjwl_68:

(Start: 15 @57355 has 290 MA's), (26, 57445), (28, 57454), (29, 57460), (31, 57496), (32, 57502), (34, 57517), (41, 57571), (42, 57574), (46, 57595), (48, 57610), (50, 57631), (59, 57721), (64, 57769),

Gene: DaddyDaniels_73 Start: 57987, Stop: 58682, Start Num: 15

Candidate Starts for DaddyDaniels_73:

(Start: 15 @57987 has 290 MA's), (26, 58077), (28, 58086), (29, 58092), (31, 58128), (32, 58134), (34, 58149), (41, 58203), (42, 58206), (46, 58227), (48, 58242), (50, 58263), (59, 58353), (64, 58401), (72, 58581),

Gene: Daffy_69 Start: 57478, Stop: 58185, Start Num: 15

Candidate Starts for Daffy_69:

(Start: 15 @57478 has 290 MA's), (26, 57568), (28, 57577), (31, 57619), (32, 57625), (34, 57640), (41, 57694), (42, 57697), (46, 57718), (48, 57733), (50, 57754), (59, 57844), (64, 57892),

Gene: Daka_72 Start: 57848, Stop: 58543, Start Num: 15

Candidate Starts for Daka_72:

(Start: 15 @57848 has 290 MA's), (26, 57938), (28, 57947), (31, 57989), (32, 57995), (34, 58010), (41, 58064), (42, 58067), (46, 58088), (48, 58103), (50, 58124), (59, 58214), (64, 58262), (72, 58442),

Gene: Dati_67 Start: 57648, Stop: 58355, Start Num: 15

Candidate Starts for Dati_67:

(Start: 15 @57648 has 290 MA's), (26, 57738), (28, 57747), (29, 57753), (31, 57789), (32, 57795), (34, 57810), (41, 57864), (42, 57867), (46, 57888), (48, 57903), (50, 57924), (59, 58014), (64, 58062),

Gene: DelRivs_68 Start: 57303, Stop: 58001, Start Num: 15

Candidate Starts for DelRivs_68:

(Start: 15 @57303 has 290 MA's), (26, 57393), (28, 57402), (29, 57408), (31, 57444), (32, 57450), (34, 57465), (41, 57519), (42, 57522), (46, 57543), (48, 57558), (50, 57579), (59, 57669), (64, 57717),

Gene: Derpp_70 Start: 57403, Stop: 58107, Start Num: 15

Candidate Starts for Derpp_70:

(Start: 15 @57403 has 290 MA's), (26, 57493), (28, 57502), (31, 57544), (32, 57550), (34, 57565), (41, 57619), (42, 57622), (46, 57643), (48, 57658), (50, 57679), (59, 57769), (64, 57817), (72, 57997),

Gene: Dice_69 Start: 57331, Stop: 58026, Start Num: 15

Candidate Starts for Dice_69:

(Start: 15 @57331 has 290 MA's), (26, 57421), (28, 57430), (29, 57436), (31, 57472), (32, 57478), (34, 57493), (41, 57547), (42, 57550), (46, 57571), (48, 57586), (50, 57607), (59, 57697), (64, 57745), (72, 57925),

Gene: DigitDog_71 Start: 59261, Stop: 59914, Start Num: 20

Candidate Starts for DigitDog_71:

(4, 59000), (9, 59147), (Start: 20 @59261 has 9 MA's), (32, 59384), (34, 59399), (45, 59471), (47, 59489), (50, 59513), (51, 59516), (52, 59528), (56, 59585), (57, 59597), (60, 59606), (62, 59624), (66, 59732),

Gene: Dingo_67 Start: 56876, Stop: 57583, Start Num: 15

Candidate Starts for Dingo_67:

(Start: 15 @56876 has 290 MA's), (26, 56966), (28, 56975), (31, 57017), (32, 57023), (34, 57038), (41, 57092), (42, 57095), (46, 57116), (48, 57131), (50, 57152), (59, 57242), (64, 57290), (72, 57470),

Gene: Dione_68 Start: 57065, Stop: 57760, Start Num: 15

Candidate Starts for Dione_68:

(Start: 15 @57065 has 290 MA's), (26, 57155), (28, 57164), (29, 57170), (31, 57206), (32, 57212), (34, 57227), (41, 57281), (42, 57284), (46, 57305), (48, 57320), (50, 57341), (59, 57431), (64, 57479), (72, 57659),

Gene: DirtJuice_70 Start: 57639, Stop: 58334, Start Num: 15

Candidate Starts for DirtJuice_70:

(Start: 15 @57639 has 290 MA's), (26, 57729), (28, 57738), (31, 57780), (32, 57786), (34, 57801), (41, 57855), (42, 57858), (46, 57879), (48, 57894), (50, 57915), (59, 58005), (64, 58053), (72, 58233),

Gene: Doddsville_68 Start: 57366, Stop: 58073, Start Num: 15

Candidate Starts for Doddsville_68:

(Start: 15 @57366 has 290 MA's), (26, 57456), (28, 57465), (29, 57471), (31, 57507), (32, 57513), (34, 57528), (41, 57582), (42, 57585), (46, 57606), (48, 57621), (50, 57642), (59, 57732), (64, 57780),

Gene: DoesntMatter_67 Start: 57355, Stop: 58050, Start Num: 15

Candidate Starts for DoesntMatter_67:

(Start: 15 @57355 has 290 MA's), (26, 57445), (28, 57454), (29, 57460), (31, 57496), (32, 57502), (34, 57517), (41, 57571), (42, 57574), (46, 57595), (48, 57610), (50, 57631), (59, 57721), (64, 57769), (72, 57949),

Gene: DolOn_74 Start: 58782, Stop: 59489, Start Num: 15

Candidate Starts for DolOn_74:

(Start: 15 @58782 has 290 MA's), (26, 58872), (28, 58881), (29, 58887), (31, 58923), (32, 58929), (34, 58944), (41, 58998), (42, 59001), (46, 59022), (48, 59037), (50, 59058), (59, 59148), (64, 59196),

Gene: DonSanchon_66 Start: 57001, Stop: 57708, Start Num: 15

Candidate Starts for DonSanchon_66:

(Start: 15 @57001 has 290 MA's), (26, 57091), (28, 57100), (29, 57106), (31, 57142), (32, 57148), (34, 57163), (41, 57217), (42, 57220), (46, 57241), (48, 57256), (50, 57277), (59, 57367), (64, 57415),

Gene: Donny_72 Start: 59155, Stop: 59805, Start Num: 20

Candidate Starts for Donny_72:

(9, 59041), (Start: 20 @59155 has 9 MA's), (32, 59278), (34, 59293), (35, 59305), (44, 59359), (45, 59365), (47, 59383), (50, 59407), (51, 59410), (56, 59479), (57, 59491), (60, 59500), (62, 59518), (66, 59626),

Gene: DuchessDung_69 Start: 56882, Stop: 57589, Start Num: 15

Candidate Starts for DuchessDung_69:

(Start: 15 @56882 has 290 MA's), (26, 56972), (28, 56981), (29, 56987), (31, 57023), (32, 57029), (34, 57044), (41, 57098), (42, 57101), (46, 57122), (48, 57137), (50, 57158), (59, 57248),

Gene: Duggie_70 Start: 57629, Stop: 58327, Start Num: 15

Candidate Starts for Duggie_70:

(Start: 15 @57629 has 290 MA's), (26, 57719), (28, 57728), (31, 57770), (32, 57776), (34, 57791), (41, 57845), (42, 57848), (46, 57869), (48, 57884), (50, 57905), (59, 57995), (64, 58043),

Gene: Durga_72 Start: 58109, Stop: 58816, Start Num: 15

Candidate Starts for Durga_72:

(Start: 15 @58109 has 290 MA's), (26, 58199), (28, 58208), (29, 58214), (31, 58250), (32, 58256), (34, 58271), (41, 58325), (42, 58328), (46, 58349), (48, 58364), (50, 58385), (59, 58475), (64, 58523),

Gene: EastView9101_70 Start: 58862, Stop: 59512, Start Num: 20

Candidate Starts for EastView9101_70:

(9, 58748), (Start: 20 @58862 has 9 MA's), (32, 58985), (34, 59000), (35, 59012), (44, 59066), (45, 59072), (47, 59090), (50, 59114), (51, 59117), (56, 59186), (57, 59198), (60, 59207), (62, 59225), (66, 59333),

Gene: ElvisPhasley_71 Start: 58509, Stop: 59207, Start Num: 15

Candidate Starts for ElvisPhasley_71:

(Start: 15 @58509 has 290 MA's), (26, 58599), (28, 58608), (31, 58650), (32, 58656), (34, 58671), (41, 58725), (42, 58728), (46, 58749), (48, 58764), (50, 58785), (59, 58875), (64, 58923),

Gene: EmGer13_70 Start: 57367, Stop: 58065, Start Num: 15

Candidate Starts for EmGer13_70:

(Start: 15 @57367 has 290 MA's), (26, 57457), (28, 57466), (31, 57508), (32, 57514), (34, 57529), (41, 57583), (42, 57586), (46, 57607), (48, 57622), (50, 57643), (59, 57733), (64, 57781),

Gene: Emiris_71 Start: 58018, Stop: 58725, Start Num: 15

Candidate Starts for Emiris_71:

(Start: 15 @58018 has 290 MA's), (26, 58108), (28, 58117), (29, 58123), (31, 58159), (32, 58165), (34, 58180), (41, 58234), (42, 58237), (46, 58258), (48, 58273), (50, 58294), (59, 58384),

Gene: EmpTee_69 Start: 57575, Stop: 58270, Start Num: 15

Candidate Starts for EmpTee_69:

(Start: 15 @57575 has 290 MA's), (26, 57665), (28, 57674), (29, 57680), (31, 57716), (32, 57722), (34, 57737), (41, 57791), (42, 57794), (46, 57815), (48, 57830), (50, 57851), (59, 57941), (64, 57989), (72, 58169),

Gene: Eremos_69 Start: 57540, Stop: 58247, Start Num: 15

Candidate Starts for Eremos_69:

(Start: 15 @57540 has 290 MA's), (26, 57630), (28, 57639), (29, 57645), (31, 57681), (32, 57687), (34, 57702), (41, 57756), (42, 57759), (46, 57780), (48, 57795), (50, 57816), (59, 57906), (64, 57954),

Gene: Etaye_69 Start: 58191, Stop: 58898, Start Num: 15

Candidate Starts for Etaye_69:

(Start: 15 @58191 has 290 MA's), (26, 58281), (28, 58290), (29, 58296), (31, 58332), (32, 58338), (34, 58353), (41, 58407), (42, 58410), (46, 58431), (48, 58446), (50, 58467), (59, 58557), (64, 58605),

Gene: Eugenia_71 Start: 58148, Stop: 58855, Start Num: 15

Candidate Starts for Eugenia_71:

(Start: 15 @58148 has 290 MA's), (26, 58238), (28, 58247), (29, 58253), (31, 58289), (32, 58295), (34, 58310), (41, 58364), (42, 58367), (46, 58388), (48, 58403), (50, 58424), (59, 58514), (64, 58562),

Gene: Fang_71 Start: 57851, Stop: 58558, Start Num: 15

Candidate Starts for Fang_71:

(Start: 15 @57851 has 290 MA's), (26, 57941), (28, 57950), (29, 57956), (31, 57992), (32, 57998), (34, 58013), (41, 58067), (42, 58070), (46, 58091), (48, 58106), (50, 58127), (59, 58217), (64, 58265),

Gene: Flake_69 Start: 57605, Stop: 58312, Start Num: 15

Candidate Starts for Flake_69:

(Start: 15 @57605 has 290 MA's), (26, 57695), (28, 57704), (31, 57746), (32, 57752), (34, 57767), (41, 57821), (42, 57824), (46, 57845), (48, 57860), (50, 57881), (59, 57971), (64, 58019),

Gene: FleetyMac_73 Start: 57546, Stop: 58241, Start Num: 15

Candidate Starts for FleetyMac_73:

(Start: 15 @57546 has 290 MA's), (26, 57636), (28, 57645), (29, 57651), (31, 57687), (32, 57693), (34, 57708), (41, 57762), (42, 57765), (46, 57786), (48, 57801), (50, 57822), (59, 57912), (64, 57960), (72, 58140),

Gene: FluffyNinja_71 Start: 57757, Stop: 58455, Start Num: 15

Candidate Starts for FluffyNinja_71:

(Start: 15 @57757 has 290 MA's), (26, 57847), (28, 57856), (31, 57898), (32, 57904), (34, 57919), (41, 57973), (42, 57976), (46, 57997), (48, 58012), (50, 58033), (59, 58123), (64, 58171), (70, 58324),

Gene: Fozzie_68 Start: 57856, Stop: 58563, Start Num: 15

Candidate Starts for Fozzie_68:

(Start: 15 @57856 has 290 MA's), (26, 57946), (28, 57955), (29, 57961), (31, 57997), (32, 58003), (34, 58018), (41, 58072), (42, 58075), (46, 58096), (48, 58111), (50, 58132), (59, 58222), (64, 58270),

Gene: Frankicide_69 Start: 57539, Stop: 58237, Start Num: 15

Candidate Starts for Frankicide_69:

(Start: 15 @57539 has 290 MA's), (26, 57629), (28, 57638), (31, 57680), (32, 57686), (34, 57701), (41, 57755), (42, 57758), (46, 57779), (48, 57794), (50, 57815), (59, 57905), (64, 57953), (72, 58133),

Gene: FremontTroll_68 Start: 57960, Stop: 58655, Start Num: 15

Candidate Starts for FremontTroll_68:

(Start: 15 @57960 has 290 MA's), (26, 58050), (28, 58059), (29, 58065), (31, 58101), (32, 58107), (34, 58122), (41, 58176), (42, 58179), (46, 58200), (48, 58215), (50, 58236), (59, 58326), (64, 58374), (72, 58554),

Gene: Freya_67 Start: 57025, Stop: 57729, Start Num: 15

Candidate Starts for Freya_67:

(Start: 15 @57025 has 290 MA's), (26, 57115), (28, 57124), (29, 57130), (31, 57166), (32, 57172), (34, 57187), (41, 57241), (42, 57244), (46, 57265), (48, 57280), (50, 57301), (59, 57391), (64, 57439), (72, 57619),

Gene: FriarPreacher_68 Start: 57402, Stop: 58097, Start Num: 15

Candidate Starts for FriarPreacher_68:

(Start: 15 @57402 has 290 MA's), (26, 57492), (28, 57501), (29, 57507), (31, 57543), (32, 57549), (34, 57564), (41, 57618), (42, 57621), (46, 57642), (48, 57657), (50, 57678), (59, 57768), (64, 57816), (72, 57996),

Gene: Fringe_74 Start: 58200, Stop: 58907, Start Num: 15

Candidate Starts for Fringe_74:

(Start: 15 @58200 has 290 MA's), (26, 58290), (28, 58299), (29, 58305), (31, 58341), (32, 58347), (34, 58362), (41, 58416), (42, 58419), (46, 58440), (48, 58455), (50, 58476), (59, 58566), (64, 58614), (70, 58767),

Gene: FugateOSU_70 Start: 58355, Stop: 59053, Start Num: 15

Candidate Starts for FugateOSU_70:

(Start: 15 @58355 has 290 MA's), (26, 58445), (28, 58454), (29, 58460), (31, 58496), (32, 58502), (34, 58517), (41, 58571), (42, 58574), (46, 58595), (48, 58610), (50, 58631), (59, 58721), (64, 58769),

Gene: Funsized_71 Start: 61219, Stop: 61962, Start Num: 13

Candidate Starts for Funsized_71:

(Start: 13 @61219 has 7 MA's), (Start: 14 @61225 has 1 MA's), (26, 61312), (27, 61315), (32, 61369), (37, 61402), (38, 61405), (43, 61444), (50, 61498), (51, 61501), (61, 61600), (65, 61672), (67, 61747),

Gene: Gareth_70 Start: 57851, Stop: 58558, Start Num: 15

Candidate Starts for Gareth_70:

(Start: 15 @57851 has 290 MA's), (26, 57941), (28, 57950), (29, 57956), (31, 57992), (32, 57998), (34, 58013), (41, 58067), (42, 58070), (46, 58091), (48, 58106), (50, 58127), (59, 58217), (64, 58265),

Gene: GeneCoco_71 Start: 58025, Stop: 58723, Start Num: 15

Candidate Starts for GeneCoco_71:

(Start: 15 @58025 has 290 MA's), (26, 58115), (28, 58124), (29, 58130), (31, 58166), (32, 58172), (34, 58187), (41, 58241), (42, 58244), (46, 58265), (48, 58280), (50, 58301), (59, 58391), (64, 58439),

Gene: Giraffe_70 Start: 57846, Stop: 58553, Start Num: 15

Candidate Starts for Giraffe_70:

(Start: 15 @57846 has 290 MA's), (26, 57936), (28, 57945), (29, 57951), (31, 57987), (32, 57993), (34, 58008), (41, 58062), (42, 58065), (46, 58086), (48, 58101), (50, 58122), (59, 58212), (64, 58260),

Gene: Gophee_71 Start: 57858, Stop: 58553, Start Num: 15

Candidate Starts for Gophee_71:

(Start: 15 @57858 has 290 MA's), (26, 57948), (28, 57957), (31, 57999), (32, 58005), (34, 58020), (41, 58074), (42, 58077), (46, 58098), (48, 58113), (50, 58134), (59, 58224), (64, 58272), (72, 58452),

Gene: Grand2040_68 Start: 57824, Stop: 58531, Start Num: 15

Candidate Starts for Grand2040_68:

(Start: 15 @57824 has 290 MA's), (26, 57914), (28, 57923), (29, 57929), (31, 57965), (32, 57971), (34, 57986), (41, 58040), (42, 58043), (46, 58064), (48, 58079), (50, 58100), (59, 58190), (64, 58238),

Gene: GreenChile_69 Start: 57376, Stop: 58074, Start Num: 15

Candidate Starts for GreenChile_69:

(Start: 15 @57376 has 290 MA's), (26, 57466), (28, 57475), (31, 57517), (32, 57523), (34, 57538), (41, 57592), (42, 57595), (46, 57616), (48, 57631), (50, 57652), (59, 57742), (64, 57790),

Gene: Gwennie1_69 Start: 57707, Stop: 58414, Start Num: 15

Candidate Starts for Gwennie1_69:

(Start: 15 @57707 has 290 MA's), (26, 57797), (28, 57806), (29, 57812), (31, 57848), (32, 57854), (34, 57869), (41, 57923), (42, 57926), (46, 57947), (48, 57962), (50, 57983), (59, 58073), (64, 58121),

Gene: Gwilliam_71 Start: 58215, Stop: 58922, Start Num: 15

Candidate Starts for Gwilliam_71:

(Start: 15 @58215 has 290 MA's), (26, 58305), (28, 58314), (29, 58320), (31, 58356), (32, 58362), (34, 58377), (41, 58431), (42, 58434), (46, 58455), (48, 58470), (50, 58491), (59, 58581), (64, 58629),

Gene: Gyarad_0069 Start: 57171, Stop: 57878, Start Num: 15

Candidate Starts for Gyarad_0069:

(Start: 15 @57171 has 290 MA's), (26, 57261), (28, 57270), (29, 57276), (31, 57312), (32, 57318), (34, 57333), (41, 57387), (42, 57390), (46, 57411), (48, 57426), (50, 57447), (59, 57537), (64, 57585),

Gene: HSavage_68 Start: 57373, Stop: 58068, Start Num: 15

Candidate Starts for HSavage_68:

(Start: 15 @57373 has 290 MA's), (26, 57463), (28, 57472), (31, 57514), (32, 57520), (34, 57535), (41, 57589), (42, 57592), (46, 57613), (48, 57628), (50, 57649), (59, 57739), (64, 57787), (72, 57967),

Gene: Haimas_68 Start: 57302, Stop: 58009, Start Num: 15

Candidate Starts for Haimas_68:

(Start: 15 @57302 has 290 MA's), (26, 57392), (28, 57401), (29, 57407), (31, 57443), (32, 57449), (34, 57464), (41, 57518), (42, 57521), (46, 57542), (48, 57557), (50, 57578), (59, 57668), (64, 57716),

Gene: Haleema_69 Start: 57392, Stop: 58099, Start Num: 15

Candidate Starts for Haleema_69:

(Start: 15 @57392 has 290 MA's), (26, 57482), (28, 57491), (29, 57497), (31, 57533), (32, 57539), (34, 57554), (41, 57608), (42, 57611), (46, 57632), (48, 57647), (50, 57668), (59, 57758), (64, 57806),

Gene: Hamish_67 Start: 57408, Stop: 58106, Start Num: 15

Candidate Starts for Hamish_67:

(Start: 15 @57408 has 290 MA's), (26, 57498), (28, 57507), (31, 57549), (32, 57555), (34, 57570), (41, 57624), (42, 57627), (46, 57648), (48, 57663), (50, 57684), (59, 57774), (64, 57822),

Gene: Happabalu_68 Start: 58494, Stop: 59201, Start Num: 15

Candidate Starts for Happabalu_68:

(Start: 15 @58494 has 290 MA's), (26, 58584), (28, 58593), (29, 58599), (31, 58635), (32, 58641), (34, 58656), (41, 58710), (42, 58713), (46, 58734), (48, 58749), (50, 58770), (59, 58860), (64, 58908),

Gene: Hartsy_69 Start: 57504, Stop: 58211, Start Num: 15

Candidate Starts for Hartsy_69:

(Start: 15 @57504 has 290 MA's), (26, 57594), (28, 57603), (29, 57609), (31, 57645), (32, 57651), (34, 57666), (41, 57720), (42, 57723), (46, 57744), (48, 57759), (50, 57780), (59, 57870), (64, 57918),

Gene: Harvey_67 Start: 57331, Stop: 58038, Start Num: 15

Candidate Starts for Harvey_67:

(Start: 15 @57331 has 290 MA's), (26, 57421), (28, 57430), (29, 57436), (31, 57472), (32, 57478), (34, 57493), (41, 57547), (42, 57550), (46, 57571), (48, 57586), (50, 57607), (59, 57697), (64, 57745),

Gene: Hashim76_76 Start: 59865, Stop: 60794, Start Num: 13

Candidate Starts for Hashim76_76:

(11, 59847), (12, 59859), (Start: 13 @59865 has 7 MA's), (26, 59970), (33, 60033), (53, 60183), (59, 60246), (73, 60528),

Gene: Hekos_68 Start: 57208, Stop: 57903, Start Num: 15

Candidate Starts for Hekos_68:

(Start: 15 @57208 has 290 MA's), (26, 57298), (28, 57307), (31, 57349), (32, 57355), (34, 57370), (41, 57424), (42, 57427), (46, 57448), (48, 57463), (50, 57484), (59, 57574), (64, 57622),

Gene: Held_68 Start: 57305, Stop: 58012, Start Num: 15

Candidate Starts for Held_68:

(Start: 15 @57305 has 290 MA's), (26, 57395), (28, 57404), (29, 57410), (31, 57446), (32, 57452), (34, 57467), (41, 57521), (42, 57524), (46, 57545), (48, 57560), (50, 57581), (59, 57671), (64, 57719),

Gene: HenryJackson_71 Start: 58019, Stop: 58726, Start Num: 15

Candidate Starts for HenryJackson_71:

(Start: 15 @58019 has 290 MA's), (26, 58109), (28, 58118), (29, 58124), (31, 58160), (32, 58166), (34, 58181), (41, 58235), (42, 58238), (46, 58259), (48, 58274), (50, 58295), (59, 58385), (64, 58433),

Gene: Hertubise_70 Start: 57785, Stop: 58492, Start Num: 15

Candidate Starts for Hertubise_70:

(Start: 15 @57785 has 290 MA's), (26, 57875), (28, 57884), (29, 57890), (31, 57926), (32, 57932), (34, 57947), (41, 58001), (42, 58004), (46, 58025), (48, 58040), (50, 58061), (59, 58151), (64, 58199),

Gene: Hetaeria_70 Start: 57725, Stop: 58423, Start Num: 15

Candidate Starts for Hetaeria_70:

(Start: 15 @57725 has 290 MA's), (26, 57815), (28, 57824), (29, 57830), (31, 57866), (32, 57872), (34, 57887), (41, 57941), (42, 57944), (46, 57965), (48, 57980), (50, 58001), (59, 58091), (64, 58139),

Gene: HighStump_71 Start: 57808, Stop: 58515, Start Num: 15

Candidate Starts for HighStump_71:

(Start: 15 @57808 has 290 MA's), (26, 57898), (28, 57907), (29, 57913), (31, 57949), (32, 57955), (34, 57970), (41, 58024), (42, 58027), (46, 58048), (48, 58063), (50, 58084), (59, 58174), (64, 58222),

Gene: Hocus_68 Start: 57323, Stop: 58030, Start Num: 15

Candidate Starts for Hocus_68:

(Start: 15 @57323 has 290 MA's), (26, 57413), (28, 57422), (29, 57428), (31, 57464), (32, 57470), (34, 57485), (41, 57539), (42, 57542), (46, 57563), (48, 57578), (50, 57599), (59, 57689), (64, 57737),

Gene: HogWash_70 Start: 58196, Stop: 58903, Start Num: 15

Candidate Starts for HogWash_70:

(Start: 15 @58196 has 290 MA's), (26, 58286), (28, 58295), (29, 58301), (31, 58337), (32, 58343), (34, 58358), (41, 58412), (42, 58415), (46, 58436), (48, 58451), (50, 58472), (59, 58562), (64, 58610),

Gene: Horchata_67 Start: 57326, Stop: 58033, Start Num: 15

Candidate Starts for Horchata_67:

(Start: 15 @57326 has 290 MA's), (26, 57416), (28, 57425), (29, 57431), (31, 57467), (32, 57473), (34, 57488), (41, 57542), (42, 57545), (46, 57566), (48, 57581), (50, 57602), (59, 57692), (64, 57740),

Gene: ImtiyazSitla_71 Start: 57709, Stop: 58416, Start Num: 15

Candidate Starts for ImtiyazSitla_71:

(Start: 15 @57709 has 290 MA's), (26, 57799), (28, 57808), (29, 57814), (31, 57850), (32, 57856), (34, 57871), (41, 57925), (42, 57928), (46, 57949), (48, 57964), (50, 57985), (59, 58075), (64, 58123),

Gene: Imvubu_68 Start: 57987, Stop: 58691, Start Num: 14

Candidate Starts for Imvubu_68:

(Start: 14 @57987 has 1 MA's), (25, 58059), (26, 58077), (27, 58080), (28, 58086), (37, 58167), (38, 58170), (43, 58209), (50, 58263), (51, 58266), (65, 58437),

Gene: Inchworm_71 Start: 57702, Stop: 58397, Start Num: 15

Candidate Starts for Inchworm_71:

(Start: 15 @57702 has 290 MA's), (26, 57792), (28, 57801), (29, 57807), (31, 57843), (32, 57849), (34, 57864), (41, 57918), (42, 57921), (46, 57942), (48, 57957), (50, 57978), (59, 58068), (64, 58116),

Gene: Indlovu_68 Start: 59161, Stop: 59871, Start Num: 18

Candidate Starts for Indlovu_68:

(3, 58894), (7, 59002), (8, 59011), (Start: 18 @59161 has 1 MA's), (Start: 20 @59182 has 9 MA's), (27, 59242), (32, 59296), (34, 59311), (35, 59323), (38, 59332), (50, 59425), (51, 59428), (59, 59515), (61, 59527),

Gene: Inverness_68 Start: 57335, Stop: 58033, Start Num: 15

Candidate Starts for Inverness_68:

(Start: 15 @57335 has 290 MA's), (26, 57425), (28, 57434), (31, 57476), (32, 57482), (34, 57497), (41, 57551), (42, 57554), (46, 57575), (48, 57590), (50, 57611), (59, 57701), (64, 57749),

Gene: Iridessa_72 Start: 57444, Stop: 58142, Start Num: 15

Candidate Starts for Iridessa_72:

(Start: 15 @57444 has 290 MA's), (26, 57534), (28, 57543), (29, 57549), (31, 57585), (32, 57591), (34, 57606), (41, 57660), (42, 57663), (46, 57684), (48, 57699), (50, 57720), (59, 57810), (64, 57858),

Gene: Iridoclysis_69 Start: 57619, Stop: 58314, Start Num: 15

Candidate Starts for Iridoclysis_69:

(Start: 15 @57619 has 290 MA's), (26, 57709), (28, 57718), (29, 57724), (31, 57760), (32, 57766), (34, 57781), (41, 57835), (42, 57838), (46, 57859), (48, 57874), (50, 57895), (59, 57985), (64, 58033), (72, 58213),

Gene: IsaacEli_72 Start: 58008, Stop: 58706, Start Num: 15

Candidate Starts for IsaacEli_72:

(Start: 15 @58008 has 290 MA's), (26, 58098), (28, 58107), (29, 58113), (31, 58149), (32, 58155), (34, 58170), (41, 58224), (42, 58227), (46, 58248), (48, 58263), (50, 58284), (59, 58374),

Gene: JDog_69 Start: 57855, Stop: 58550, Start Num: 15

Candidate Starts for JDog_69:

(Start: 15 @57855 has 290 MA's), (26, 57945), (28, 57954), (29, 57960), (31, 57996), (32, 58002), (34, 58017), (41, 58071), (42, 58074), (46, 58095), (48, 58110), (50, 58131), (59, 58221), (64, 58269),

Gene: JacAttac_70 Start: 57329, Stop: 58024, Start Num: 15

Candidate Starts for JacAttac_70:

(Start: 15 @57329 has 290 MA's), (26, 57419), (28, 57428), (29, 57434), (31, 57470), (32, 57476), (34, 57491), (41, 57545), (42, 57548), (46, 57569), (48, 57584), (50, 57605), (59, 57695), (64, 57743), (72, 57923),

Gene: JakeO_71 Start: 57580, Stop: 58278, Start Num: 15

Candidate Starts for JakeO_71:

(Start: 15 @57580 has 290 MA's), (26, 57670), (28, 57679), (29, 57685), (31, 57721), (32, 57727), (34, 57742), (41, 57796), (42, 57799), (46, 57820), (48, 57835), (50, 57856), (59, 57946), (64, 57994),

Gene: JangoPhett_68 Start: 57670, Stop: 58365, Start Num: 15

Candidate Starts for JangoPhett_68:

(Start: 15 @57670 has 290 MA's), (26, 57760), (28, 57769), (29, 57775), (31, 57811), (32, 57817), (34, 57832), (41, 57886), (42, 57889), (46, 57910), (48, 57925), (50, 57946), (59, 58036), (64, 58084), (72, 58264),

Gene: Jesabah_72 Start: 58435, Stop: 59130, Start Num: 15

Candidate Starts for Jesabah_72:

(Start: 15 @58435 has 290 MA's), (26, 58525), (28, 58534), (29, 58540), (31, 58576), (32, 58582), (34, 58597), (41, 58651), (42, 58654), (46, 58675), (48, 58690), (50, 58711), (59, 58801), (64, 58849),

Gene: Jillium_71 Start: 58014, Stop: 58721, Start Num: 15

Candidate Starts for Jillium_71:

(Start: 15 @58014 has 290 MA's), (26, 58104), (28, 58113), (29, 58119), (31, 58155), (32, 58161), (34, 58176), (41, 58230), (42, 58233), (46, 58254), (48, 58269), (50, 58290), (59, 58380), (64, 58428),

Gene: Jiminy_70 Start: 57416, Stop: 58114, Start Num: 15

Candidate Starts for Jiminy_70:

(Start: 15 @57416 has 290 MA's), (26, 57506), (28, 57515), (29, 57521), (31, 57557), (32, 57563), (34, 57578), (41, 57632), (42, 57635), (46, 57656), (48, 57671), (50, 57692), (59, 57782), (64, 57830),

Gene: Jiraiya_71 Start: 57612, Stop: 58310, Start Num: 15

Candidate Starts for Jiraiya_71:

(Start: 15 @57612 has 290 MA's), (26, 57702), (28, 57711), (31, 57753), (32, 57759), (34, 57774), (41, 57828), (42, 57831), (46, 57852), (48, 57867), (50, 57888), (59, 57978), (64, 58026),

Gene: KLucky39_68 Start: 57216, Stop: 57923, Start Num: 15

Candidate Starts for KLucky39_68:

(Start: 15 @57216 has 290 MA's), (26, 57306), (28, 57315), (31, 57357), (32, 57363), (34, 57378), (41, 57432), (42, 57435), (46, 57456), (48, 57471), (50, 57492), (59, 57582), (64, 57630),

Gene: Kahve_71 Start: 58016, Stop: 58723, Start Num: 15

Candidate Starts for Kahve_71:

(Start: 15 @58016 has 290 MA's), (26, 58106), (28, 58115), (29, 58121), (31, 58157), (32, 58163), (34, 58178), (41, 58232), (42, 58235), (46, 58256), (48, 58271), (50, 58292), (59, 58382), (64, 58430),

Gene: Kailash_68 Start: 57726, Stop: 58424, Start Num: 15

Candidate Starts for Kailash_68:

(Start: 15 @57726 has 290 MA's), (26, 57816), (28, 57825), (29, 57831), (31, 57867), (32, 57873), (34, 57888), (41, 57942), (42, 57945), (46, 57966), (48, 57981), (50, 58002), (59, 58092), (64, 58140),

Gene: KarasumaRum_70 Start: 59079, Stop: 59732, Start Num: 20

Candidate Starts for KarasumaRum_70:

(4, 58800), (9, 58959), (Start: 20 @59079 has 9 MA's), (28, 59154), (32, 59202), (34, 59217), (45, 59289), (47, 59307), (50, 59331), (51, 59334), (52, 59346), (56, 59403), (57, 59415), (60, 59424), (62, 59442), (66, 59550), (71, 59616),

Gene: Karn_70 Start: 57576, Stop: 58283, Start Num: 15

Candidate Starts for Karn_70:

(Start: 15 @57576 has 290 MA's), (26, 57666), (28, 57675), (29, 57681), (31, 57717), (32, 57723), (34, 57738), (41, 57792), (42, 57795), (46, 57816), (48, 57831), (50, 57852), (59, 57942), (64, 57990),

Gene: Katniss_72 Start: 57456, Stop: 58163, Start Num: 15

Candidate Starts for Katniss_72:

(Start: 15 @57456 has 290 MA's), (26, 57546), (28, 57555), (29, 57561), (31, 57597), (32, 57603), (34, 57618), (41, 57672), (42, 57675), (46, 57696), (48, 57711), (50, 57732), (59, 57822), (64, 57870),

Gene: Keitherie_73 Start: 58078, Stop: 58785, Start Num: 15

Candidate Starts for Keitherie_73:

(Start: 15 @58078 has 290 MA's), (26, 58168), (28, 58177), (29, 58183), (31, 58219), (32, 58225), (34, 58240), (41, 58294), (42, 58297), (46, 58318), (48, 58333), (50, 58354), (59, 58444), (64, 58492),

Gene: Khan1_70 Start: 57798, Stop: 58505, Start Num: 15

Candidate Starts for Khan1_70:

(Start: 15 @57798 has 290 MA's), (26, 57888), (28, 57897), (29, 57903), (31, 57939), (32, 57945), (34, 57960), (41, 58014), (42, 58017), (46, 58038), (48, 58053), (50, 58074), (59, 58164),

Gene: Kikipoo_72 Start: 58008, Stop: 58706, Start Num: 15

Candidate Starts for Kikipoo_72:

(Start: 15 @58008 has 290 MA's), (26, 58098), (28, 58107), (29, 58113), (31, 58149), (32, 58155), (34, 58170), (41, 58224), (42, 58227), (46, 58248), (48, 58263), (50, 58284), (59, 58374),

Gene: Kimbrough_71 Start: 57914, Stop: 58609, Start Num: 15

Candidate Starts for Kimbrough_71:

(Start: 15 @57914 has 290 MA's), (26, 58004), (28, 58013), (29, 58019), (31, 58055), (32, 58061), (34, 58076), (41, 58130), (42, 58133), (46, 58154), (48, 58169), (50, 58190), (59, 58280), (64, 58328), (72, 58508),

Gene: KingTut_61 Start: 54063, Stop: 54770, Start Num: 15

Candidate Starts for KingTut_61:

(Start: 15 @54063 has 290 MA's), (26, 54153), (28, 54162), (29, 54168), (31, 54204), (32, 54210), (34, 54225), (41, 54279), (42, 54282), (46, 54303), (48, 54318), (50, 54339), (59, 54429), (64, 54477),

Gene: KingVeVeVe_68 Start: 56866, Stop: 57573, Start Num: 15

Candidate Starts for KingVeVeVe_68:

(Start: 15 @56866 has 290 MA's), (26, 56956), (28, 56965), (31, 57007), (32, 57013), (34, 57028), (41, 57082), (42, 57085), (46, 57106), (48, 57121), (50, 57142), (59, 57232), (64, 57280),

Gene: KlimbOn_69 Start: 57343, Stop: 58041, Start Num: 15

Candidate Starts for KlimbOn_69:

(Start: 15 @57343 has 290 MA's), (26, 57433), (28, 57442), (29, 57448), (31, 57484), (32, 57490), (34, 57505), (41, 57559), (42, 57562), (46, 57583), (48, 57598), (50, 57619), (59, 57709), (64, 57757),

Gene: Kloppinator_70 Start: 57524, Stop: 58222, Start Num: 15

Candidate Starts for Kloppinator_70:

(Start: 15 @57524 has 290 MA's), (26, 57614), (28, 57623), (31, 57665), (32, 57671), (34, 57686), (41, 57740), (42, 57743), (46, 57764), (48, 57779), (50, 57800), (59, 57890), (64, 57938),

Gene: Knocker_71 Start: 60395, Stop: 61171, Start Num: 13

Candidate Starts for Knocker_71:

(Start: 13 @60395 has 7 MA's), (26, 60485), (27, 60488), (32, 60542), (37, 60575), (38, 60578), (42, 60614), (43, 60617), (50, 60671), (51, 60674), (59, 60761), (61, 60773), (67, 60947),

Gene: Kwadwo_69 Start: 57323, Stop: 58030, Start Num: 15

Candidate Starts for Kwadwo_69:

(Start: 15 @57323 has 290 MA's), (26, 57413), (28, 57422), (29, 57428), (31, 57464), (32, 57470), (34, 57485), (41, 57539), (42, 57542), (46, 57563), (48, 57578), (50, 57599), (59, 57689), (64, 57737),

Gene: Kwksand96_71 Start: 57590, Stop: 58297, Start Num: 15

Candidate Starts for Kwksand96_71:

(Start: 15 @57590 has 290 MA's), (26, 57680), (28, 57689), (29, 57695), (31, 57731), (32, 57737), (34, 57752), (41, 57806), (42, 57809), (46, 57830), (48, 57845), (50, 57866), (59, 57956), (64, 58004),

Gene: Labeouficaum_70 Start: 57403, Stop: 58107, Start Num: 15

Candidate Starts for Labeouficaum_70:

(Start: 15 @57403 has 290 MA's), (26, 57493), (28, 57502), (31, 57544), (32, 57550), (34, 57565), (41, 57619), (42, 57622), (46, 57643), (48, 57658), (50, 57679), (59, 57769), (64, 57817), (72, 57997),

Gene: Larson_72 Start: 57665, Stop: 58372, Start Num: 15

Candidate Starts for Larson_72:

(Start: 15 @57665 has 290 MA's), (26, 57755), (28, 57764), (31, 57806), (32, 57812), (34, 57827), (41, 57881), (42, 57884), (46, 57905), (48, 57920), (50, 57941), (59, 58031), (64, 58079),

Gene: LasagnaCat_71 Start: 57714, Stop: 58409, Start Num: 15

Candidate Starts for LasagnaCat_71:

(Start: 15 @57714 has 290 MA's), (26, 57804), (28, 57813), (29, 57819), (31, 57855), (32, 57861), (34, 57876), (41, 57930), (42, 57933), (46, 57954), (48, 57969), (50, 57990), (59, 58080), (64, 58128),

Gene: Lasso_69 Start: 57553, Stop: 58260, Start Num: 15

Candidate Starts for Lasso_69:

(Start: 15 @57553 has 290 MA's), (26, 57643), (28, 57652), (29, 57658), (31, 57694), (32, 57700), (34, 57715), (41, 57769), (42, 57772), (46, 57793), (48, 57808), (50, 57829), (59, 57919), (64, 57967),

Gene: LeeLot_69 Start: 57909, Stop: 58616, Start Num: 15

Candidate Starts for LeeLot_69:

(Start: 15 @57909 has 290 MA's), (26, 57999), (28, 58008), (29, 58014), (31, 58050), (32, 58056), (34, 58071), (41, 58125), (42, 58128), (46, 58149), (48, 58164), (50, 58185), (59, 58275), (64, 58323),

Gene: Lego3393_68 Start: 58035, Stop: 58730, Start Num: 15

Candidate Starts for Lego3393_68:

(Start: 15 @58035 has 290 MA's), (26, 58125), (28, 58134), (29, 58140), (31, 58176), (32, 58182), (34, 58197), (41, 58251), (42, 58254), (46, 58275), (48, 58290), (50, 58311), (59, 58401), (64, 58449), (72, 58629),

Gene: Legolas_71 Start: 57648, Stop: 58355, Start Num: 15

Candidate Starts for Legolas_71:

(Start: 15 @57648 has 290 MA's), (26, 57738), (28, 57747), (29, 57753), (31, 57789), (32, 57795), (34, 57810), (41, 57864), (42, 57867), (46, 57888), (48, 57903), (50, 57924), (59, 58014), (64, 58062),

Gene: Lehmann_72 Start: 57891, Stop: 58589, Start Num: 15

Candidate Starts for Lehmann_72:

(Start: 15 @57891 has 290 MA's), (26, 57981), (28, 57990), (31, 58032), (32, 58038), (34, 58053), (41, 58107), (42, 58110), (46, 58131), (48, 58146), (50, 58167), (59, 58257), (64, 58305),

Gene: LeiMonet_73 Start: 57786, Stop: 58493, Start Num: 15

Candidate Starts for LeiMonet_73:

(Start: 15 @57786 has 290 MA's), (26, 57876), (28, 57885), (29, 57891), (31, 57927), (32, 57933), (34, 57948), (41, 58002), (42, 58005), (46, 58026), (48, 58041), (50, 58062), (59, 58152), (64, 58200),

Gene: LemonSlice_70 Start: 57300, Stop: 58007, Start Num: 15

Candidate Starts for LemonSlice_70:

(Start: 15 @57300 has 290 MA's), (26, 57390), (28, 57399), (29, 57405), (31, 57441), (32, 57447), (34, 57462), (41, 57516), (42, 57519), (46, 57540), (48, 57555), (50, 57576), (59, 57666), (64, 57714),

Gene: LittleMinkey_81 Start: 59740, Stop: 60681, Start Num: 13

Candidate Starts for LittleMinkey_81:

(2, 59473), (Start: 13 @59740 has 7 MA's), (26, 59842), (28, 59851), (33, 59905), (47, 60004), (49, 60019), (50, 60028), (59, 60118), (73, 60409),

Gene: Longacauda_71 Start: 57689, Stop: 58396, Start Num: 15

Candidate Starts for Longacauda_71:

(Start: 15 @57689 has 290 MA's), (26, 57779), (28, 57788), (29, 57794), (31, 57830), (32, 57836), (34, 57851), (41, 57905), (42, 57908), (46, 57929), (48, 57944), (50, 57965), (59, 58055), (64, 58103),

Gene: Lopsy_67 Start: 57013, Stop: 57711, Start Num: 15

Candidate Starts for Lopsy_67:

(Start: 15 @57013 has 290 MA's), (26, 57103), (28, 57112), (31, 57154), (32, 57160), (34, 57175), (41, 57229), (42, 57232), (46, 57253), (48, 57268), (50, 57289), (59, 57379), (64, 57427),

Gene: LostAndPhound_69 Start: 57853, Stop: 58560, Start Num: 15

Candidate Starts for LostAndPhound_69:

(Start: 15 @57853 has 290 MA's), (26, 57943), (28, 57952), (29, 57958), (31, 57994), (32, 58000), (34, 58015), (41, 58069), (42, 58072), (46, 58093), (48, 58108), (50, 58129), (59, 58219), (64, 58267),

Gene: LuckyMarjie_67 Start: 57074, Stop: 57769, Start Num: 15

Candidate Starts for LuckyMarjie_67:

(Start: 15 @57074 has 290 MA's), (26, 57164), (28, 57173), (29, 57179), (31, 57215), (32, 57221), (34, 57236), (41, 57290), (42, 57293), (46, 57314), (48, 57329), (50, 57350), (59, 57440), (64, 57488), (72, 57668),

Gene: Lulumae_67 Start: 57058, Stop: 57753, Start Num: 15

Candidate Starts for Lulumae_67:

(Start: 15 @57058 has 290 MA's), (26, 57148), (28, 57157), (29, 57163), (31, 57199), (32, 57205), (34, 57220), (41, 57274), (42, 57277), (46, 57298), (48, 57313), (50, 57334), (59, 57424), (64, 57472), (72, 57652),

Gene: Lulwa_68 Start: 56677, Stop: 57384, Start Num: 15

Candidate Starts for Lulwa_68:

(Start: 15 @56677 has 290 MA's), (26, 56767), (28, 56776), (31, 56818), (32, 56824), (34, 56839), (41, 56893), (42, 56896), (46, 56917), (48, 56932), (50, 56953), (59, 57043),

Gene: Lumine_71 Start: 57512, Stop: 58207, Start Num: 15

Candidate Starts for Lumine_71:

(Start: 15 @57512 has 290 MA's), (26, 57602), (28, 57611), (29, 57617), (31, 57653), (32, 57659), (34, 57674), (41, 57728), (42, 57731), (46, 57752), (48, 57767), (50, 57788), (59, 57878), (64, 57926), (72, 58106),

Gene: MRabcd_70 Start: 57796, Stop: 58491, Start Num: 15

Candidate Starts for MRabcd_70:

(Start: 15 @57796 has 290 MA's), (26, 57886), (28, 57895), (29, 57901), (31, 57937), (32, 57943), (34, 57958), (41, 58012), (42, 58015), (46, 58036), (48, 58051), (50, 58072), (59, 58162), (64, 58210),

Gene: Mag7_68 Start: 57270, Stop: 57968, Start Num: 15

Candidate Starts for Mag7_68:

(Start: 15 @57270 has 290 MA's), (26, 57360), (28, 57369), (29, 57375), (31, 57411), (32, 57417), (34, 57432), (41, 57486), (42, 57489), (46, 57510), (48, 57525), (50, 57546), (59, 57636), (64, 57684),

Gene: Magic8_69 Start: 57634, Stop: 58332, Start Num: 15

Candidate Starts for Magic8_69:

(Start: 15 @57634 has 290 MA's), (26, 57724), (28, 57733), (29, 57739), (31, 57775), (32, 57781), (34, 57796), (41, 57850), (42, 57853), (46, 57874), (48, 57889), (50, 57910), (59, 58000), (64, 58048),

Gene: Mana_69 Start: 57469, Stop: 58176, Start Num: 15

Candidate Starts for Mana_69:

(Start: 15 @57469 has 290 MA's), (26, 57559), (28, 57568), (29, 57574), (31, 57610), (32, 57616), (34, 57631), (41, 57685), (42, 57688), (46, 57709), (48, 57724), (50, 57745), (59, 57835), (64, 57883),

Gene: Manad_69 Start: 57625, Stop: 58323, Start Num: 15

Candidate Starts for Manad_69:

(Start: 15 @57625 has 290 MA's), (26, 57715), (28, 57724), (29, 57730), (31, 57766), (32, 57772), (34, 57787), (41, 57841), (42, 57844), (46, 57865), (48, 57880), (50, 57901), (59, 57991), (64, 58039),

Gene: Maru_70 Start: 57908, Stop: 58615, Start Num: 15

Candidate Starts for Maru_70:

(Start: 15 @57908 has 290 MA's), (26, 57998), (28, 58007), (29, 58013), (31, 58049), (32, 58055), (34, 58070), (41, 58124), (42, 58127), (46, 58148), (48, 58163), (50, 58184), (59, 58274), (64, 58322),

Gene: Maskar_71 Start: 57709, Stop: 58416, Start Num: 15

Candidate Starts for Maskar_71:

(Start: 15 @57709 has 290 MA's), (26, 57799), (28, 57808), (29, 57814), (31, 57850), (32, 57856), (34, 57871), (41, 57925), (42, 57928), (46, 57949), (48, 57964), (50, 57985), (59, 58075), (64, 58123),

Gene: Matalotodo_69 Start: 58308, Stop: 59015, Start Num: 15

Candidate Starts for Matalotodo_69:

(Start: 15 @58308 has 290 MA's), (26, 58398), (28, 58407), (29, 58413), (31, 58449), (32, 58455), (34, 58470), (41, 58524), (42, 58527), (46, 58548), (48, 58563), (50, 58584), (59, 58674), (64, 58722),

Gene: Mcshane_69 Start: 57336, Stop: 58031, Start Num: 15

Candidate Starts for Mcshane_69:

(Start: 15 @57336 has 290 MA's), (26, 57426), (28, 57435), (29, 57441), (31, 57477), (32, 57483), (34, 57498), (41, 57552), (42, 57555), (46, 57576), (48, 57591), (50, 57612), (59, 57702), (64, 57750), (72, 57930),

Gene: Mecca_70 Start: 57901, Stop: 58596, Start Num: 15

Candidate Starts for Mecca_70:

(Start: 15 @57901 has 290 MA's), (26, 57991), (28, 58000), (29, 58006), (31, 58042), (32, 58048), (34, 58063), (41, 58117), (42, 58120), (46, 58141), (48, 58156), (50, 58177), (59, 58267), (64, 58315), (72, 58495),

Gene: Megamind20_70 Start: 57324, Stop: 58016, Start Num: 15

Candidate Starts for Megamind20_70:

(Start: 15 @57324 has 290 MA's), (26, 57414), (28, 57423), (29, 57429), (31, 57465), (32, 57471), (34, 57486), (41, 57540), (42, 57543), (46, 57564), (48, 57579), (50, 57600), (59, 57690), (64, 57738),

Gene: Megatron_71 Start: 57995, Stop: 58702, Start Num: 15

Candidate Starts for Megatron_71:

(Start: 15 @57995 has 290 MA's), (26, 58085), (28, 58094), (29, 58100), (31, 58136), (32, 58142), (34, 58157), (41, 58211), (42, 58214), (46, 58235), (48, 58250), (50, 58271), (59, 58361), (64, 58409),

Gene: Melc17_67 Start: 57936, Stop: 58643, Start Num: 15

Candidate Starts for Melc17_67:

(Start: 15 @57936 has 290 MA's), (26, 58026), (28, 58035), (29, 58041), (31, 58077), (32, 58083), (34, 58098), (41, 58152), (42, 58155), (46, 58176), (48, 58191), (50, 58212), (59, 58302), (64, 58350),

Gene: MelsMeow_69 Start: 57588, Stop: 58295, Start Num: 15

Candidate Starts for MelsMeow_69:

(Start: 15 @57588 has 290 MA's), (26, 57678), (28, 57687), (29, 57693), (31, 57729), (32, 57735), (34, 57750), (41, 57804), (42, 57807), (46, 57828), (48, 57843), (50, 57864), (59, 57954), (64, 58002),

Gene: Mesh1_71 Start: 58044, Stop: 58751, Start Num: 15

Candidate Starts for Mesh1_71:

(Start: 15 @58044 has 290 MA's), (26, 58134), (28, 58143), (29, 58149), (31, 58185), (32, 58191), (34, 58206), (41, 58260), (42, 58263), (46, 58284), (48, 58299), (50, 58320), (59, 58410), (64, 58458),

Gene: Mesmerelda_69 Start: 57894, Stop: 58589, Start Num: 15

Candidate Starts for Mesmerelda_69:

(Start: 15 @57894 has 290 MA's), (26, 57984), (28, 57993), (29, 57999), (31, 58035), (32, 58041), (34, 58056), (41, 58110), (42, 58113), (46, 58134), (48, 58149), (50, 58170), (59, 58260), (64, 58308), (72, 58488),

Gene: MichaelPhcott_68 Start: 57267, Stop: 57965, Start Num: 15

Candidate Starts for MichaelPhcott_68:

(Start: 15 @57267 has 290 MA's), (26, 57357), (28, 57366), (29, 57372), (31, 57408), (32, 57414), (34, 57429), (41, 57483), (42, 57486), (46, 57507), (48, 57522), (50, 57543), (59, 57633), (64, 57681),

Gene: Mikota_67 Start: 56864, Stop: 57571, Start Num: 15

Candidate Starts for Mikota_67:

(Start: 15 @56864 has 290 MA's), (26, 56954), (28, 56963), (31, 57005), (32, 57011), (34, 57026), (41, 57080), (42, 57083), (46, 57104), (48, 57119), (50, 57140), (59, 57230), (64, 57278), (72, 57458),

Gene: MiniBoss_67 Start: 56639, Stop: 57346, Start Num: 15

Candidate Starts for MiniBoss_67:

(Start: 15 @56639 has 290 MA's), (26, 56729), (28, 56738), (29, 56744), (31, 56780), (32, 56786), (34, 56801), (41, 56855), (42, 56858), (46, 56879), (48, 56894), (50, 56915), (59, 57005), (64, 57053), (72, 57233),

Gene: MitKao_70 Start: 57478, Stop: 58185, Start Num: 15

Candidate Starts for MitKao_70:

(Start: 15 @57478 has 290 MA's), (26, 57568), (28, 57577), (31, 57619), (32, 57625), (34, 57640), (41, 57694), (42, 57697), (46, 57718), (48, 57733), (50, 57754), (59, 57844), (64, 57892),

Gene: Morgushi_68 Start: 57293, Stop: 58000, Start Num: 15

Candidate Starts for Morgushi_68:

(Start: 15 @57293 has 290 MA's), (26, 57383), (28, 57392), (29, 57398), (31, 57434), (32, 57440), (34, 57455), (41, 57509), (42, 57512), (46, 57533), (48, 57548), (50, 57569), (59, 57659), (64, 57707),

Gene: Morty_71 Start: 57886, Stop: 58593, Start Num: 15

Candidate Starts for Morty_71:

(Start: 15 @57886 has 290 MA's), (26, 57976), (28, 57985), (31, 58027), (32, 58033), (34, 58048), (41, 58102), (42, 58105), (46, 58126), (48, 58141), (50, 58162), (59, 58252),

Gene: Mosaic_68 Start: 57473, Stop: 58180, Start Num: 15

Candidate Starts for Mosaic_68:

(Start: 15 @57473 has 290 MA's), (26, 57563), (28, 57572), (29, 57578), (31, 57614), (32, 57620), (34, 57635), (41, 57689), (42, 57692), (46, 57713), (48, 57728), (50, 57749), (59, 57839), (64, 57887),

Gene: MrPhizzler_73 Start: 57775, Stop: 58482, Start Num: 15

Candidate Starts for MrPhizzler_73:

(Start: 15 @57775 has 290 MA's), (26, 57865), (28, 57874), (31, 57916), (32, 57922), (34, 57937), (41, 57991), (42, 57994), (46, 58015), (48, 58030), (50, 58051), (59, 58141), (64, 58189),

Gene: Mulan_69 Start: 57533, Stop: 58228, Start Num: 15

Candidate Starts for Mulan_69:

(Start: 15 @57533 has 290 MA's), (26, 57623), (28, 57632), (29, 57638), (31, 57674), (32, 57680), (34, 57695), (41, 57749), (42, 57752), (46, 57773), (48, 57788), (50, 57809), (59, 57899), (64, 57947),

Gene: Murdoc_67 Start: 57582, Stop: 58289, Start Num: 15

Candidate Starts for Murdoc_67:

(Start: 15 @57582 has 290 MA's), (26, 57672), (28, 57681), (29, 57687), (31, 57723), (32, 57729), (34, 57744), (41, 57798), (42, 57801), (46, 57822), (48, 57837), (50, 57858), (59, 57948), (64, 57996),

Gene: Mutante_71 Start: 57492, Stop: 58187, Start Num: 15

Candidate Starts for Mutante_71:

(Start: 15 @57492 has 290 MA's), (26, 57582), (28, 57591), (29, 57597), (31, 57633), (32, 57639), (34, 57654), (41, 57708), (42, 57711), (46, 57732), (48, 57747), (50, 57768), (59, 57858), (64, 57906),

Gene: Nacho_0073 Start: 58386, Stop: 59093, Start Num: 15

Candidate Starts for Nacho_0073:

(Start: 15 @58386 has 290 MA's), (26, 58476), (28, 58485), (31, 58527), (32, 58533), (34, 58548), (41, 58602), (42, 58605), (46, 58626), (48, 58641), (50, 58662), (59, 58752), (64, 58800),

Gene: Nangang_70 Start: 59260, Stop: 59910, Start Num: 20

Candidate Starts for Nangang_70:

(4, 58996), (9, 59146), (Start: 20 @59260 has 9 MA's), (24, 59302), (32, 59380), (34, 59395), (45, 59467), (47, 59485), (50, 59509), (51, 59512), (52, 59524), (56, 59581), (57, 59593), (58, 59596), (60, 59602), (62, 59620), (66, 59728),

Gene: Nathan_71 Start: 57844, Stop: 58551, Start Num: 15

Candidate Starts for Nathan_71:

(Start: 15 @57844 has 290 MA's), (26, 57934), (28, 57943), (29, 57949), (31, 57985), (32, 57991), (34, 58006), (41, 58060), (42, 58063), (46, 58084), (48, 58099), (50, 58120), (59, 58210), (64, 58258),

Gene: Newman_68 Start: 57663, Stop: 58361, Start Num: 15

Candidate Starts for Newman_68:

(Start: 15 @57663 has 290 MA's), (26, 57753), (28, 57762), (31, 57804), (32, 57810), (34, 57825), (41, 57879), (42, 57882), (46, 57903), (48, 57918), (50, 57939), (59, 58029), (64, 58077),

Gene: NiaNia_71 Start: 57371, Stop: 58066, Start Num: 15

Candidate Starts for NiaNia_71:

(Start: 15 @57371 has 290 MA's), (26, 57461), (28, 57470), (29, 57476), (31, 57512), (32, 57518), (34, 57533), (41, 57587), (42, 57590), (46, 57611), (48, 57626), (50, 57647), (59, 57737), (64, 57785), (72, 57965),

Gene: Nicole21_71 Start: 57628, Stop: 58323, Start Num: 15

Candidate Starts for Nicole21_71:

(Start: 15 @57628 has 290 MA's), (26, 57718), (28, 57727), (29, 57733), (31, 57769), (32, 57775), (34, 57790), (41, 57844), (42, 57847), (46, 57868), (48, 57883), (50, 57904), (59, 57994), (64, 58042), (72, 58222),

Gene: Nova1_70 Start: 57471, Stop: 58169, Start Num: 15

Candidate Starts for Nova1_70:

(Start: 15 @57471 has 290 MA's), (26, 57561), (28, 57570), (29, 57576), (31, 57612), (32, 57618), (34, 57633), (41, 57687), (42, 57690), (46, 57711), (48, 57726), (50, 57747), (59, 57837), (64, 57885),

Gene: Numberten_69 Start: 57592, Stop: 58299, Start Num: 15

Candidate Starts for Numberten_69:

(Start: 15 @57592 has 290 MA's), (26, 57682), (28, 57691), (31, 57733), (32, 57739), (34, 57754), (41, 57808), (42, 57811), (46, 57832), (48, 57847), (50, 57868), (59, 57958),

Gene: Nyala_69 Start: 57346, Stop: 58041, Start Num: 15

Candidate Starts for Nyala_69:

(Start: 15 @57346 has 290 MA's), (26, 57436), (28, 57445), (29, 57451), (31, 57487), (32, 57493), (34, 57508), (41, 57562), (42, 57565), (46, 57586), (48, 57601), (50, 57622), (59, 57712), (64, 57760), (72, 57940),

Gene: OSmaximus_70 Start: 58095, Stop: 58802, Start Num: 15

Candidate Starts for OSmaximus_70:

(Start: 15 @58095 has 290 MA's), (26, 58185), (28, 58194), (29, 58200), (31, 58236), (32, 58242), (34, 58257), (41, 58311), (42, 58314), (46, 58335), (48, 58350), (50, 58371), (59, 58461), (64, 58509),

Gene: Olak_70 Start: 57496, Stop: 58191, Start Num: 15

Candidate Starts for Olak_70:

(Start: 15 @57496 has 290 MA's), (26, 57586), (28, 57595), (29, 57601), (31, 57637), (32, 57643), (34, 57658), (41, 57712), (42, 57715), (46, 57736), (48, 57751), (50, 57772), (59, 57862), (64, 57910), (72, 58090),

Gene: Oline_69 Start: 57495, Stop: 58193, Start Num: 15

Candidate Starts for Oline_69:

(Start: 15 @57495 has 290 MA's), (26, 57585), (28, 57594), (29, 57600), (31, 57636), (32, 57642), (34, 57657), (41, 57711), (42, 57714), (46, 57735), (48, 57750), (50, 57771), (59, 57861),

Gene: Olive_68 Start: 57565, Stop: 58260, Start Num: 15

Candidate Starts for Olive_68:

(Start: 15 @57565 has 290 MA's), (26, 57655), (28, 57664), (29, 57670), (31, 57706), (32, 57712), (34, 57727), (41, 57781), (42, 57784), (46, 57805), (48, 57820), (50, 57841), (59, 57931), (64, 57979), (72, 58159),

Gene: OliverWalter_70 Start: 57815, Stop: 58510, Start Num: 15

Candidate Starts for OliverWalter_70:

(Start: 15 @57815 has 290 MA's), (26, 57905), (28, 57914), (29, 57920), (31, 57956), (32, 57962), (34, 57977), (41, 58031), (42, 58034), (46, 58055), (48, 58070), (50, 58091), (59, 58181), (64, 58229), (72, 58409),

Gene: Omniscient_71 Start: 58209, Stop: 58904, Start Num: 15

Candidate Starts for Omniscient_71:

(Start: 15 @58209 has 290 MA's), (26, 58299), (28, 58308), (29, 58314), (31, 58350), (32, 58356), (34, 58371), (41, 58425), (42, 58428), (46, 58449), (48, 58464), (50, 58485), (59, 58575), (64, 58623), (72, 58803),

Gene: OneBrain_73 Start: 57585, Stop: 58280, Start Num: 15

Candidate Starts for OneBrain_73:

(Start: 15 @57585 has 290 MA's), (26, 57675), (28, 57684), (29, 57690), (31, 57726), (32, 57732), (34, 57747), (41, 57801), (42, 57804), (46, 57825), (48, 57840), (50, 57861), (59, 57951), (64, 57999), (72, 58179),

Gene: Oosterbaan_70 Start: 57772, Stop: 58479, Start Num: 15

Candidate Starts for Oosterbaan_70:

(Start: 15 @57772 has 290 MA's), (26, 57862), (28, 57871), (29, 57877), (31, 57913), (32, 57919), (34, 57934), (41, 57988), (42, 57991), (46, 58012), (48, 58027), (50, 58048), (59, 58138), (64, 58186),

Gene: Orfeu_69 Start: 57855, Stop: 58550, Start Num: 15

Candidate Starts for Orfeu_69:

(Start: 15 @57855 has 290 MA's), (26, 57945), (28, 57954), (29, 57960), (31, 57996), (32, 58002), (34, 58017), (41, 58071), (42, 58074), (46, 58095), (48, 58110), (50, 58131), (59, 58221), (64, 58269), (72, 58449),

Gene: Orion_70 Start: 57434, Stop: 58141, Start Num: 15

Candidate Starts for Orion_70:

(Start: 15 @57434 has 290 MA's), (26, 57524), (28, 57533), (29, 57539), (31, 57575), (32, 57581), (34, 57596), (41, 57650), (42, 57653), (46, 57674), (48, 57689), (50, 57710), (59, 57800), (64, 57848),

Gene: Orwigg_69 Start: 57270, Stop: 57977, Start Num: 15

Candidate Starts for Orwigg_69:

(Start: 15 @57270 has 290 MA's), (26, 57360), (28, 57369), (29, 57375), (31, 57411), (32, 57417), (34, 57432), (41, 57486), (42, 57489), (46, 57510), (48, 57525), (50, 57546), (59, 57636), (64, 57684),

Gene: PG1_70 Start: 58005, Stop: 58712, Start Num: 15

Candidate Starts for PG1_70:

(Start: 15 @58005 has 290 MA's), (26, 58095), (28, 58104), (29, 58110), (31, 58146), (32, 58152), (34, 58167), (41, 58221), (42, 58224), (46, 58245), (48, 58260), (50, 58281), (59, 58371), (64, 58419),

Gene: Pacifista_69 Start: 57347, Stop: 58042, Start Num: 15

Candidate Starts for Pacifista_69:

(Start: 15 @57347 has 290 MA's), (26, 57437), (28, 57446), (29, 57452), (31, 57488), (32, 57494), (34, 57509), (41, 57563), (42, 57566), (46, 57587), (48, 57602), (50, 57623), (59, 57713), (64, 57761), (72, 57941),

Gene: PallasAthena_71 Start: 57324, Stop: 58019, Start Num: 15

Candidate Starts for PallasAthena_71:

(Start: 15 @57324 has 290 MA's), (26, 57414), (28, 57423), (29, 57429), (31, 57465), (32, 57471), (34, 57486), (41, 57540), (42, 57543), (46, 57564), (48, 57579), (50, 57600), (59, 57690), (64, 57738),

Gene: PenguinLover67_68 Start: 58680, Stop: 59375, Start Num: 15

Candidate Starts for PenguinLover67_68:

(10, 58608), (Start: 15 @58680 has 290 MA's), (Start: 18 @58692 has 1 MA's), (Start: 20 @58713 has 9 MA's), (22, 58734), (26, 58770), (27, 58773), (28, 58779), (37, 58860), (43, 58902), (50, 58956), (51, 58959), (54, 58986), (55, 59001), (62, 59067),

Gene: Phamished_71 Start: 57516, Stop: 58211, Start Num: 15

Candidate Starts for Phamished_71:

(Start: 15 @57516 has 290 MA's), (26, 57606), (28, 57615), (29, 57621), (31, 57657), (32, 57663), (34, 57678), (41, 57732), (42, 57735), (46, 57756), (48, 57771), (50, 57792), (59, 57882), (64, 57930), (72, 58110),

Gene: Phareon_68 Start: 57024, Stop: 57731, Start Num: 15

Candidate Starts for Phareon_68:

(Start: 15 @57024 has 290 MA's), (26, 57114), (28, 57123), (29, 57129), (31, 57165), (32, 57171), (34, 57186), (41, 57240), (42, 57243), (46, 57264), (48, 57279), (50, 57300), (59, 57390), (64, 57438),

Gene: PhatCats2014_71 Start: 58010, Stop: 58714, Start Num: 15

Candidate Starts for PhatCats2014_71:

(Start: 15 @58010 has 290 MA's), (26, 58100), (28, 58109), (29, 58115), (31, 58151), (32, 58157), (34, 58172), (41, 58226), (42, 58229), (46, 58250), (48, 58265), (50, 58286), (59, 58376), (64, 58424), (72, 58604),

Gene: PhatLouie_72 Start: 57855, Stop: 58562, Start Num: 15

Candidate Starts for PhatLouie_72:

(Start: 15 @57855 has 290 MA's), (26, 57945), (28, 57954), (31, 57996), (32, 58002), (34, 58017), (41, 58071), (42, 58074), (46, 58095), (48, 58110), (50, 58131), (59, 58221), (64, 58269),

Gene: Phelemich_67 Start: 59019, Stop: 59660, Start Num: 20

Candidate Starts for Phelemich_67:

(Start: 20 @59019 has 9 MA's), (24, 59064), (32, 59142), (34, 59157), (35, 59169), (44, 59223), (45, 59229), (47, 59247), (50, 59271), (51, 59274), (54, 59301), (55, 59316), (57, 59355), (60, 59364), (62, 59382), (63, 59400), (66, 59490), (71, 59556),

Gene: PhenghisKhan_70 Start: 57472, Stop: 58179, Start Num: 15

Candidate Starts for PhenghisKhan_70:

(Start: 15 @57472 has 290 MA's), (26, 57562), (28, 57571), (29, 57577), (31, 57613), (32, 57619), (34, 57634), (41, 57688), (42, 57691), (46, 57712), (48, 57727), (50, 57748), (59, 57838), (64, 57886),

Gene: Pherdinand_71 Start: 57759, Stop: 58457, Start Num: 15

Candidate Starts for Pherdinand_71:

(Start: 15 @57759 has 290 MA's), (26, 57849), (28, 57858), (31, 57900), (32, 57906), (34, 57921), (41, 57975), (42, 57978), (46, 57999), (48, 58014), (50, 58035), (59, 58125), (64, 58173), (70, 58326),

Gene: Phergie_70 Start: 57464, Stop: 58171, Start Num: 15

Candidate Starts for Phergie_70:

(Start: 15 @57464 has 290 MA's), (26, 57554), (28, 57563), (29, 57569), (31, 57605), (32, 57611), (34, 57626), (41, 57680), (42, 57683), (46, 57704), (48, 57719), (50, 57740), (59, 57830), (64, 57878),

Gene: Phipps_70 Start: 57557, Stop: 58264, Start Num: 15

Candidate Starts for Phipps_70:

(Start: 15 @57557 has 290 MA's), (26, 57647), (28, 57656), (29, 57662), (31, 57698), (32, 57704), (34, 57719), (41, 57773), (42, 57776), (46, 57797), (48, 57812), (50, 57833), (59, 57923), (64, 57971),

Gene: Phleuron_68 Start: 57300, Stop: 57998, Start Num: 15

Candidate Starts for Phleuron_68:

(Start: 15 @57300 has 290 MA's), (26, 57390), (28, 57399), (29, 57405), (31, 57441), (32, 57447), (34, 57462), (41, 57516), (42, 57519), (46, 57540), (48, 57555), (50, 57576), (59, 57666), (64, 57714),

Gene: PhrankReynolds_69 Start: 57469, Stop: 58176, Start Num: 15

Candidate Starts for PhrankReynolds_69:

(Start: 15 @57469 has 290 MA's), (26, 57559), (28, 57568), (29, 57574), (31, 57610), (32, 57616), (34, 57631), (41, 57685), (42, 57688), (46, 57709), (48, 57724), (50, 57745), (59, 57835), (64, 57883),

Gene: PhrodoBaggins_72 Start: 57863, Stop: 58570, Start Num: 15

Candidate Starts for PhrodoBaggins_72:

(Start: 15 @57863 has 290 MA's), (26, 57953), (28, 57962), (29, 57968), (31, 58004), (32, 58010), (34, 58025), (41, 58079), (42, 58082), (46, 58103), (48, 58118), (50, 58139), (59, 58229), (64, 58277),

Gene: Phunky_68 Start: 57369, Stop: 58064, Start Num: 15

Candidate Starts for Phunky_68:

(Start: 15 @57369 has 290 MA's), (26, 57459), (28, 57468), (29, 57474), (31, 57510), (32, 57516), (34, 57531), (41, 57585), (42, 57588), (46, 57609), (48, 57624), (50, 57645), (59, 57735), (64, 57783), (72, 57963),

Gene: Piglet_0071 Start: 57982, Stop: 58689, Start Num: 15

Candidate Starts for Piglet_0071:

(Start: 15 @57982 has 290 MA's), (26, 58072), (28, 58081), (29, 58087), (31, 58123), (32, 58129), (34, 58144), (41, 58198), (42, 58201), (46, 58222), (48, 58237), (50, 58258), (59, 58348), (64, 58396),

Gene: PinheadLarry_69 Start: 57631, Stop: 58338, Start Num: 15

Candidate Starts for PinheadLarry_69:

(Start: 15 @57631 has 290 MA's), (26, 57721), (28, 57730), (29, 57736), (31, 57772), (32, 57778), (34, 57793), (41, 57847), (42, 57850), (46, 57871), (48, 57886), (50, 57907), (59, 57997), (64, 58045),

Gene: Pinkman_70 Start: 57581, Stop: 58288, Start Num: 15

Candidate Starts for Pinkman_70:

(Start: 15 @57581 has 290 MA's), (26, 57671), (28, 57680), (29, 57686), (31, 57722), (32, 57728), (34, 57743), (41, 57797), (42, 57800), (46, 57821), (48, 57836), (50, 57857), (59, 57947), (64, 57995),

Gene: Pipsqueak_67 Start: 57310, Stop: 58017, Start Num: 15

Candidate Starts for Pipsqueak_67:

(Start: 15 @57310 has 290 MA's), (26, 57400), (28, 57409), (29, 57415), (31, 57451), (32, 57457), (34, 57472), (41, 57526), (42, 57529), (46, 57550), (48, 57565), (50, 57586), (59, 57676), (64, 57724),

Gene: Placalicious_70 Start: 58351, Stop: 59055, Start Num: 15

Candidate Starts for Placalicious_70:

(Start: 15 @58351 has 290 MA's), (26, 58441), (28, 58450), (29, 58456), (31, 58492), (32, 58498), (34, 58513), (41, 58567), (42, 58570), (46, 58591), (48, 58606), (50, 58627), (59, 58717), (64, 58765), (72, 58945),

Gene: Plata_69 Start: 57575, Stop: 58273, Start Num: 15

Candidate Starts for Plata_69:

(Start: 15 @57575 has 290 MA's), (26, 57665), (28, 57674), (29, 57680), (31, 57716), (32, 57722), (34, 57737), (41, 57791), (42, 57794), (46, 57815), (48, 57830), (50, 57851), (59, 57941), (64, 57989),

Gene: Plmatters_68 Start: 57322, Stop: 58017, Start Num: 15

Candidate Starts for Plmatters_68:

(Start: 15 @57322 has 290 MA's), (26, 57412), (28, 57421), (29, 57427), (31, 57463), (32, 57469), (34, 57484), (41, 57538), (42, 57541), (46, 57562), (48, 57577), (50, 57598), (59, 57688), (64, 57736), (72, 57916),

Gene: Podrick_69 Start: 57391, Stop: 58098, Start Num: 15

Candidate Starts for Podrick_69:

(Start: 15 @57391 has 290 MA's), (26, 57481), (28, 57490), (29, 57496), (31, 57532), (32, 57538), (34, 57553), (41, 57607), (42, 57610), (46, 57631), (48, 57646), (50, 57667), (59, 57757), (64, 57805),

Gene: Pops_68 Start: 57338, Stop: 58036, Start Num: 15

Candidate Starts for Pops_68:

(Start: 15 @57338 has 290 MA's), (26, 57428), (28, 57437), (29, 57443), (31, 57479), (32, 57485), (34, 57500), (41, 57554), (42, 57557), (46, 57578), (48, 57593), (50, 57614), (59, 57704), (64, 57752),

Gene: Potter_67 Start: 57316, Stop: 58023, Start Num: 15

Candidate Starts for Potter_67:

(Start: 15 @57316 has 290 MA's), (26, 57406), (28, 57415), (29, 57421), (31, 57457), (32, 57463), (34, 57478), (41, 57532), (42, 57535), (46, 57556), (48, 57571), (50, 57592), (59, 57682), (64, 57730),

Gene: Prickles_71 Start: 57847, Stop: 58542, Start Num: 15

Candidate Starts for Prickles_71:

(Start: 15 @57847 has 290 MA's), (26, 57937), (28, 57946), (31, 57988), (32, 57994), (34, 58009), (41, 58063), (42, 58066), (46, 58087), (48, 58102), (50, 58123), (59, 58213), (64, 58261), (72, 58441),

Gene: ProfessorX_68 Start: 57363, Stop: 58058, Start Num: 15

Candidate Starts for ProfessorX_68:

(Start: 15 @57363 has 290 MA's), (26, 57453), (28, 57462), (29, 57468), (31, 57504), (32, 57510), (34, 57525), (41, 57579), (42, 57582), (46, 57603), (48, 57618), (50, 57639), (59, 57729), (64, 57777), (72, 57957),

Gene: Puhltonio_68 Start: 57592, Stop: 58287, Start Num: 15

Candidate Starts for Puhltonio_68:

(Start: 15 @57592 has 290 MA's), (26, 57682), (28, 57691), (29, 57697), (31, 57733), (32, 57739), (34, 57754), (41, 57808), (42, 57811), (46, 57832), (48, 57847), (50, 57868), (59, 57958), (64, 58006), (72,

58186),

Gene: QueenBeane_70 Start: 57635, Stop: 58330, Start Num: 15

Candidate Starts for QueenBeane_70:

(Start: 15 @57635 has 290 MA's), (26, 57725), (28, 57734), (29, 57740), (31, 57776), (32, 57782), (34, 57797), (41, 57851), (42, 57854), (46, 57875), (48, 57890), (50, 57911), (59, 58001), (64, 58049), (72, 58229),

Gene: Quesadilla_69 Start: 58834, Stop: 59553, Start Num: 15

Candidate Starts for Quesadilla_69:

(Start: 15 @58834 has 290 MA's), (Start: 18 @58846 has 1 MA's), (21, 58879), (22, 58888), (23, 58891), (25, 58906), (26, 58924), (27, 58927), (37, 59014), (42, 59053), (43, 59056), (50, 59110), (51, 59113),

Gene: Quisquilliae_72 Start: 57647, Stop: 58354, Start Num: 15

Candidate Starts for Quisquilliae_72:

(Start: 15 @57647 has 290 MA's), (26, 57737), (28, 57746), (31, 57788), (32, 57794), (34, 57809), (41, 57863), (42, 57866), (46, 57887), (48, 57902), (50, 57923), (59, 58013),

Gene: Reccee_71 Start: 59243, Stop: 59887, Start Num: 20

Candidate Starts for Reccee_71:

(9, 59129), (Start: 20 @59243 has 9 MA's), (32, 59366), (34, 59381), (35, 59393), (44, 59447), (45, 59453), (47, 59471), (50, 59495), (51, 59498), (56, 59567), (60, 59588), (62, 59606), (66, 59714),

Gene: RedMaple_70 Start: 58074, Stop: 58781, Start Num: 15

Candidate Starts for RedMaple_70:

(Start: 15 @58074 has 290 MA's), (26, 58164), (28, 58173), (29, 58179), (31, 58215), (32, 58221), (34, 58236), (41, 58290), (42, 58293), (46, 58314), (48, 58329), (50, 58350), (59, 58440), (64, 58488),

Gene: RedRaider89_69 Start: 57777, Stop: 58481, Start Num: 15

Candidate Starts for RedRaider89_69:

(Start: 15 @57777 has 290 MA's), (26, 57867), (28, 57876), (29, 57882), (31, 57918), (32, 57924), (34, 57939), (41, 57993), (42, 57996), (46, 58017), (48, 58032), (50, 58053), (59, 58143), (64, 58191), (72, 58371),

Gene: Reprobate_69 Start: 59024, Stop: 59665, Start Num: 20

Candidate Starts for Reprobate_69:

(Start: 20 @59024 has 9 MA's), (24, 59069), (32, 59147), (34, 59162), (35, 59174), (44, 59228), (45, 59234), (47, 59252), (50, 59276), (51, 59279), (54, 59306), (55, 59321), (57, 59360), (60, 59369), (62, 59387), (63, 59405), (66, 59495), (71, 59561),

Gene: Rich_70 Start: 60248, Stop: 60886, Start Num: 20

Candidate Starts for Rich_70:

(16, 60227), (Start: 20 @60248 has 9 MA's), (22, 60278), (32, 60371), (44, 60452), (45, 60458), (47, 60476), (50, 60500), (51, 60503), (56, 60572), (57, 60584), (60, 60593), (62, 60611), (66, 60719), (71, 60785),

Gene: Ricotta_70 Start: 57329, Stop: 58024, Start Num: 15

Candidate Starts for Ricotta_70:

(Start: 15 @57329 has 290 MA's), (26, 57419), (28, 57428), (29, 57434), (31, 57470), (32, 57476), (34, 57491), (41, 57545), (42, 57548), (46, 57569), (48, 57584), (50, 57605), (59, 57695), (64, 57743), (72, 57923),

Gene: Riggan_71 Start: 57658, Stop: 58353, Start Num: 15

Candidate Starts for Riggan_71:

(Start: 15 @57658 has 290 MA's), (26, 57748), (28, 57757), (29, 57763), (31, 57799), (32, 57805), (34, 57820), (41, 57874), (42, 57877), (46, 57898), (48, 57913), (50, 57934), (59, 58024), (64, 58072), (72, 58252),

Gene: Rimu_70 Start: 57796, Stop: 58503, Start Num: 15

Candidate Starts for Rimu_70:

(Start: 15 @57796 has 290 MA's), (26, 57886), (28, 57895), (29, 57901), (31, 57937), (32, 57943), (34, 57958), (41, 58012), (42, 58015), (46, 58036), (48, 58051), (50, 58072), (59, 58162),

Gene: Rinkes_67 Start: 58796, Stop: 59521, Start Num: 13

Candidate Starts for Rinkes_67:

(Start: 13 @58796 has 7 MA's), (17, 58811), (26, 58898), (27, 58901), (31, 58949), (32, 58955), (37, 58988), (38, 58991), (50, 59084), (51, 59087), (60, 59177), (61, 59186), (69, 59345), (72, 59372),

Gene: Rita130_70 Start: 59056, Stop: 59703, Start Num: 20

Candidate Starts for Rita130_70:

(9, 58942), (Start: 20 @59056 has 9 MA's), (32, 59179), (34, 59194), (35, 59206), (44, 59260), (45, 59266), (47, 59284), (50, 59308), (51, 59311), (56, 59380), (57, 59392), (60, 59401), (62, 59419), (66, 59527),

Gene: Riverton_69 Start: 57588, Stop: 58295, Start Num: 15

Candidate Starts for Riverton_69:

(Start: 15 @57588 has 290 MA's), (26, 57678), (28, 57687), (29, 57693), (31, 57729), (32, 57735), (34, 57750), (41, 57804), (42, 57807), (46, 57828), (48, 57843), (50, 57864), (59, 57954), (64, 58002),

Gene: Robyn_71 Start: 57931, Stop: 58629, Start Num: 15

Candidate Starts for Robyn_71:

(Start: 15 @57931 has 290 MA's), (26, 58021), (28, 58030), (31, 58072), (32, 58078), (34, 58093), (41, 58147), (42, 58150), (46, 58171), (48, 58186), (50, 58207), (59, 58297), (64, 58345),

Gene: Roliet_67 Start: 56687, Stop: 57394, Start Num: 15

Candidate Starts for Roliet_67:

(Start: 15 @56687 has 290 MA's), (26, 56777), (28, 56786), (29, 56792), (31, 56828), (32, 56834), (34, 56849), (41, 56903), (42, 56906), (46, 56927), (48, 56942), (50, 56963), (59, 57053), (64, 57101), (72, 57281),

Gene: Roscoe_70 Start: 57775, Stop: 58482, Start Num: 15

Candidate Starts for Roscoe_70:

(Start: 15 @57775 has 290 MA's), (26, 57865), (28, 57874), (29, 57880), (31, 57916), (32, 57922), (34, 57937), (41, 57991), (42, 57994), (46, 58015), (48, 58030), (50, 58051), (59, 58141), (64, 58189),

Gene: Roy17_68 Start: 57058, Stop: 57753, Start Num: 15

Candidate Starts for Roy17_68:

(Start: 15 @57058 has 290 MA's), (26, 57148), (28, 57157), (29, 57163), (31, 57199), (32, 57205), (34, 57220), (41, 57274), (42, 57277), (46, 57298), (48, 57313), (50, 57334), (59, 57424), (64, 57472), (72, 57652),

Gene: SDcharge11_69 Start: 56829, Stop: 57527, Start Num: 15

Candidate Starts for SDcharge11_69:

(Start: 15 @56829 has 290 MA's), (26, 56919), (28, 56928), (31, 56970), (32, 56976), (34, 56991), (41, 57045), (42, 57048), (46, 57069), (48, 57084), (50, 57105), (59, 57195), (64, 57243),

Gene: Saguaro_66 Start: 58049, Stop: 58765, Start Num: 19

Candidate Starts for Saguaro_66:

(Start: 19 @58049 has 1 MA's), (24, 58094), (26, 58115), (27, 58118), (32, 58172), (33, 58178), (34, 58187), (36, 58202), (42, 58244), (50, 58301), (51, 58304), (59, 58391), (65, 58475), (68, 58559),

Gene: SallyH_72 Start: 57598, Stop: 58299, Start Num: 15

Candidate Starts for SallyH_72:

(Start: 15 @57598 has 290 MA's), (26, 57688), (28, 57697), (31, 57739), (32, 57745), (34, 57760), (41, 57814), (42, 57817), (46, 57838), (48, 57853), (50, 57874), (59, 57964),

Gene: Samaymay_70 Start: 57635, Stop: 58330, Start Num: 15

Candidate Starts for Samaymay_70:

(Start: 15 @57635 has 290 MA's), (26, 57725), (28, 57734), (29, 57740), (31, 57776), (32, 57782), (34, 57797), (41, 57851), (42, 57854), (46, 57875), (48, 57890), (50, 57911), (59, 58001), (64, 58049), (72, 58229),

Gene: SassyCat97_68 Start: 57306, Stop: 58013, Start Num: 15

Candidate Starts for SassyCat97_68:

(Start: 15 @57306 has 290 MA's), (26, 57396), (28, 57405), (29, 57411), (31, 57447), (32, 57453), (34, 57468), (41, 57522), (42, 57525), (46, 57546), (48, 57561), (50, 57582), (59, 57672), (64, 57720),

Gene: Schadenfreude_70 Start: 57233, Stop: 57931, Start Num: 15

Candidate Starts for Schadenfreude_70:

(Start: 15 @57233 has 290 MA's), (26, 57323), (28, 57332), (31, 57374), (32, 57380), (34, 57395), (41, 57449), (42, 57452), (46, 57473), (48, 57488), (50, 57509), (59, 57599), (64, 57647),

Gene: Schueller_68 Start: 57590, Stop: 58285, Start Num: 15

Candidate Starts for Schueller_68:

(Start: 15 @57590 has 290 MA's), (26, 57680), (28, 57689), (29, 57695), (31, 57731), (32, 57737), (34, 57752), (41, 57806), (42, 57809), (46, 57830), (48, 57845), (50, 57866), (59, 57956), (64, 58004),

Gene: Scoot17C_71 Start: 57436, Stop: 58143, Start Num: 15

Candidate Starts for Scoot17C_71:

(Start: 15 @57436 has 290 MA's), (26, 57526), (28, 57535), (29, 57541), (31, 57577), (32, 57583), (34, 57598), (41, 57652), (42, 57655), (46, 57676), (48, 57691), (50, 57712), (59, 57802), (64, 57850),

Gene: Scrick_69 Start: 57318, Stop: 58025, Start Num: 15

Candidate Starts for Scrick_69:

(Start: 15 @57318 has 290 MA's), (26, 57408), (28, 57417), (29, 57423), (31, 57459), (32, 57465), (34, 57480), (41, 57534), (42, 57537), (46, 57558), (48, 57573), (50, 57594), (59, 57684),

Gene: Selr12_71 Start: 57375, Stop: 58070, Start Num: 15

Candidate Starts for Selr12_71:

(Start: 15 @57375 has 290 MA's), (26, 57465), (28, 57474), (29, 57480), (31, 57516), (32, 57522), (34, 57537), (41, 57591), (42, 57594), (46, 57615), (48, 57630), (50, 57651), (59, 57741), (64, 57789), (72, 57969),

Gene: Serendipitous_69 Start: 58599, Stop: 59252, Start Num: 20

Candidate Starts for Serendipitous_69:

(4, 58341), (9, 58479), (Start: 20 @58599 has 9 MA's), (32, 58722), (34, 58737), (44, 58803), (45, 58809), (47, 58827), (50, 58851), (51, 58854), (52, 58866), (56, 58923), (57, 58935), (60, 58944), (62, 58962), (66, 59070),

Gene: Serendipity_70 Start: 57791, Stop: 58498, Start Num: 15

Candidate Starts for Serendipity_70:

(Start: 15 @57791 has 290 MA's), (26, 57881), (28, 57890), (31, 57932), (32, 57938), (34, 57953), (41, 58007), (42, 58010), (46, 58031), (48, 58046), (50, 58067), (59, 58157),

Gene: Serpentine_0071 Start: 57874, Stop: 58581, Start Num: 15

Candidate Starts for Serpentine_0071:

(Start: 15 @57874 has 290 MA's), (26, 57964), (28, 57973), (29, 57979), (31, 58015), (32, 58021), (34, 58036), (41, 58090), (42, 58093), (46, 58114), (48, 58129), (50, 58150), (59, 58240), (64, 58288),

Gene: ShadowBud_71 Start: 57644, Stop: 58351, Start Num: 15

Candidate Starts for ShadowBud_71:

(Start: 15 @57644 has 290 MA's), (26, 57734), (28, 57743), (31, 57785), (32, 57791), (34, 57806), (41, 57860), (42, 57863), (46, 57884), (48, 57899), (50, 57920), (59, 58010),

Gene: Sheila_66 Start: 56718, Stop: 57425, Start Num: 15

Candidate Starts for Sheila_66:

(Start: 15 @56718 has 290 MA's), (26, 56808), (28, 56817), (31, 56859), (32, 56865), (34, 56880), (41, 56934), (42, 56937), (46, 56958), (48, 56973), (50, 56994), (59, 57084), (64, 57132), (72, 57312),

Gene: Shenyu_71 Start: 59626, Stop: 60279, Start Num: 20

Candidate Starts for Shenyu_71:

(4, 59365), (9, 59512), (Start: 20 @59626 has 9 MA's), (32, 59749), (34, 59764), (45, 59836), (47, 59854), (50, 59878), (51, 59881), (52, 59893), (56, 59950), (57, 59962), (60, 59971), (62, 59989), (66, 60097),

Gene: ShiVal_68 Start: 57343, Stop: 58050, Start Num: 15

Candidate Starts for ShiVal_68:

(Start: 15 @57343 has 290 MA's), (26, 57433), (28, 57442), (29, 57448), (31, 57484), (32, 57490), (34, 57505), (41, 57559), (42, 57562), (46, 57583), (48, 57598), (50, 57619), (59, 57709), (64, 57757), (70, 57910),

Gene: Sigman_70 Start: 57329, Stop: 58024, Start Num: 15

Candidate Starts for Sigman_70:

(Start: 15 @57329 has 290 MA's), (26, 57419), (28, 57428), (29, 57434), (31, 57470), (32, 57476), (34, 57491), (41, 57545), (42, 57548), (46, 57569), (48, 57584), (50, 57605), (59, 57695), (64, 57743), (72, 57923),

Gene: SilverBell_71 Start: 57754, Stop: 58461, Start Num: 15

Candidate Starts for SilverBell_71:

(Start: 15 @57754 has 290 MA's), (26, 57844), (28, 57853), (29, 57859), (31, 57895), (32, 57901), (34, 57916), (41, 57970), (42, 57973), (46, 57994), (48, 58009), (50, 58030), (59, 58120), (64, 58168),

Gene: Simielle_70 Start: 57300, Stop: 57995, Start Num: 15

Candidate Starts for Simielle_70:

(Start: 15 @57300 has 290 MA's), (26, 57390), (28, 57399), (29, 57405), (31, 57441), (32, 57447), (34, 57462), (41, 57516), (42, 57519), (46, 57540), (48, 57555), (50, 57576), (59, 57666), (64, 57714), (72, 57894),

Gene: SirBeauregard_71 Start: 57866, Stop: 58570, Start Num: 15

Candidate Starts for SirBeauregard_71:

(Start: 15 @57866 has 290 MA's), (26, 57956), (28, 57965), (31, 58007), (32, 58013), (34, 58028), (41, 58082), (42, 58085), (46, 58106), (48, 58121), (50, 58142), (59, 58232), (64, 58280), (72, 58460),

Gene: SirJeffery_70 Start: 59195, Stop: 59848, Start Num: 20

Candidate Starts for SirJeffery_70:

(9, 59081), (Start: 20 @59195 has 9 MA's), (32, 59318), (34, 59333), (35, 59345), (44, 59399), (45, 59405), (47, 59423), (50, 59447), (51, 59450), (56, 59519), (57, 59531), (60, 59540), (62, 59558), (66, 59666),

Gene: Skippy_72 Start: 57727, Stop: 58422, Start Num: 15

Candidate Starts for Skippy_72:

(Start: 15 @57727 has 290 MA's), (26, 57817), (28, 57826), (29, 57832), (31, 57868), (32, 57874), (34, 57889), (41, 57943), (42, 57946), (46, 57967), (48, 57982), (50, 58003), (59, 58093), (64, 58141),

Gene: Slatt_70 Start: 57602, Stop: 58309, Start Num: 15

Candidate Starts for Slatt_70:

(Start: 15 @57602 has 290 MA's), (26, 57692), (28, 57701), (29, 57707), (31, 57743), (32, 57749), (34, 57764), (41, 57818), (42, 57821), (46, 57842), (48, 57857), (50, 57878), (59, 57968),

Gene: Soile_71 Start: 57849, Stop: 58547, Start Num: 15

Candidate Starts for Soile_71:

(Start: 15 @57849 has 290 MA's), (26, 57939), (28, 57948), (29, 57954), (31, 57990), (32, 57996), (34, 58011), (41, 58065), (42, 58068), (46, 58089), (48, 58104), (50, 58125), (59, 58215), (64, 58263),

Gene: Solosis_68 Start: 57301, Stop: 58008, Start Num: 15

Candidate Starts for Solosis_68:

(Start: 15 @57301 has 290 MA's), (26, 57391), (28, 57400), (31, 57442), (32, 57448), (34, 57463), (41, 57517), (42, 57520), (46, 57541), (48, 57556), (50, 57577), (59, 57667), (64, 57715),

Gene: Sophia_68 Start: 57294, Stop: 58001, Start Num: 15

Candidate Starts for Sophia_68:

(Start: 15 @57294 has 290 MA's), (26, 57384), (28, 57393), (29, 57399), (31, 57435), (32, 57441), (34, 57456), (41, 57510), (42, 57513), (46, 57534), (48, 57549), (50, 57570), (59, 57660), (64, 57708),

Gene: Soto_67 Start: 56861, Stop: 57556, Start Num: 15

Candidate Starts for Soto_67:

(Start: 15 @56861 has 290 MA's), (26, 56951), (28, 56960), (31, 57002), (32, 57008), (34, 57023), (41, 57077), (42, 57080), (46, 57101), (48, 57116), (50, 57137), (59, 57227), (64, 57275), (72, 57455),

Gene: Spartan300_69 Start: 57570, Stop: 58265, Start Num: 15

Candidate Starts for Spartan300_69:

(Start: 15 @57570 has 290 MA's), (26, 57660), (28, 57669), (29, 57675), (31, 57711), (32, 57717), (34, 57732), (41, 57786), (42, 57789), (46, 57810), (48, 57825), (50, 57846), (59, 57936), (64, 57984), (72, 58164),

Gene: Squid_69 Start: 57594, Stop: 58292, Start Num: 15

Candidate Starts for Squid_69:

(Start: 15 @57594 has 290 MA's), (26, 57684), (28, 57693), (31, 57735), (32, 57741), (34, 57756), (41, 57810), (42, 57813), (46, 57834), (48, 57849), (50, 57870), (59, 57960),

Gene: Squiggle_69 Start: 57313, Stop: 58020, Start Num: 15

Candidate Starts for Squiggle_69:

(Start: 15 @57313 has 290 MA's), (26, 57403), (28, 57412), (29, 57418), (31, 57454), (32, 57460), (34, 57475), (41, 57529), (42, 57532), (46, 57553), (48, 57568), (50, 57589), (59, 57679), (64, 57727),

Gene: StinkyVeggy_70 Start: 59079, Stop: 59732, Start Num: 20

Candidate Starts for StinkyVeggy_70:

(4, 58800), (9, 58959), (Start: 20 @59079 has 9 MA's), (28, 59154), (32, 59202), (34, 59217), (45, 59289), (47, 59307), (50, 59331), (51, 59334), (52, 59346), (56, 59403), (57, 59415), (60, 59424), (62, 59442), (66, 59550), (71, 59616),

Gene: Struggle_70 Start: 57414, Stop: 58112, Start Num: 15

Candidate Starts for Struggle_70:

(Start: 15 @57414 has 290 MA's), (26, 57504), (28, 57513), (29, 57519), (31, 57555), (32, 57561), (34, 57576), (41, 57630), (42, 57633), (46, 57654), (48, 57669), (50, 57690), (59, 57780), (64, 57828),

Gene: Suffolk_68 Start: 57143, Stop: 57841, Start Num: 15

Candidate Starts for Suffolk_68:

(Start: 15 @57143 has 290 MA's), (26, 57233), (28, 57242), (31, 57284), (32, 57290), (34, 57305), (41, 57359), (42, 57362), (46, 57383), (48, 57398), (50, 57419), (59, 57509), (64, 57557),

Gene: Suigeneris_72 Start: 59346, Stop: 59990, Start Num: 20

Candidate Starts for Suigeneris_72:

(9, 59232), (Start: 20 @59346 has 9 MA's), (32, 59469), (34, 59484), (35, 59496), (44, 59550), (45, 59556), (47, 59574), (50, 59598), (51, 59601), (56, 59670), (57, 59682), (60, 59691), (62, 59709), (66, 59817),

Gene: Surely_70 Start: 57884, Stop: 58582, Start Num: 15

Candidate Starts for Surely_70:

(Start: 15 @57884 has 290 MA's), (26, 57974), (28, 57983), (29, 57989), (31, 58025), (32, 58031), (34, 58046), (41, 58100), (42, 58103), (46, 58124), (48, 58139), (50, 58160), (59, 58250), (64, 58298),

Gene: Swiphy_72 Start: 57855, Stop: 58562, Start Num: 15

Candidate Starts for Swiphy_72:

(Start: 15 @57855 has 290 MA's), (26, 57945), (28, 57954), (31, 57996), (32, 58002), (34, 58017), (41, 58071), (42, 58074), (46, 58095), (48, 58110), (50, 58131), (59, 58221), (64, 58269),

Gene: Swish_71 Start: 57744, Stop: 58445, Start Num: 15

Candidate Starts for Swish_71:

(Start: 15 @57744 has 290 MA's), (26, 57834), (28, 57843), (31, 57885), (32, 57891), (34, 57906), (41, 57960), (42, 57963), (46, 57984), (48, 57999), (50, 58020), (59, 58110),

Gene: TallGrassMM_69 Start: 57384, Stop: 58079, Start Num: 15

Candidate Starts for TallGrassMM_69:

(Start: 15 @57384 has 290 MA's), (26, 57474), (28, 57483), (29, 57489), (31, 57525), (32, 57531), (34, 57546), (41, 57600), (42, 57603), (46, 57624), (48, 57639), (50, 57660), (59, 57750), (64, 57798),

Gene: Taraxa_70 Start: 57213, Stop: 57911, Start Num: 15

Candidate Starts for Taraxa_70:

(Start: 15 @57213 has 290 MA's), (26, 57303), (28, 57312), (29, 57318), (31, 57354), (32, 57360), (34, 57375), (41, 57429), (42, 57432), (46, 57453), (48, 57468), (50, 57489), (59, 57579), (64, 57627),

Gene: Telesworld_68 Start: 57459, Stop: 58154, Start Num: 15

Candidate Starts for Telesworld_68:

(Start: 15 @57459 has 290 MA's), (26, 57549), (28, 57558), (29, 57564), (31, 57600), (32, 57606), (34, 57621), (41, 57675), (42, 57678), (46, 57699), (48, 57714), (50, 57735), (59, 57825), (64, 57873), (72, 58053),

Gene: Thonko_73 Start: 57522, Stop: 58262, Start Num: 13

Candidate Starts for Thonko_73:

(5, 57327), (6, 57402), (Start: 13 @57522 has 7 MA's), (24, 57585), (26, 57606), (27, 57609), (30, 57654), (34, 57678), (40, 57717), (50, 57792), (61, 57894),

Gene: Thora_69 Start: 57824, Stop: 58531, Start Num: 15

Candidate Starts for Thora_69:

(Start: 15 @57824 has 290 MA's), (26, 57914), (28, 57923), (29, 57929), (31, 57965), (32, 57971), (34, 57986), (41, 58040), (42, 58043), (46, 58064), (48, 58079), (50, 58100), (59, 58190), (64, 58238),

Gene: ThreeOh3D2_72 Start: 58001, Stop: 58708, Start Num: 15

Candidate Starts for ThreeOh3D2_72:

(Start: 15 @58001 has 290 MA's), (26, 58091), (28, 58100), (29, 58106), (31, 58142), (32, 58148), (34, 58163), (41, 58217), (42, 58220), (46, 58241), (48, 58256), (50, 58277), (59, 58367), (64, 58415),

Gene: Thunderbird_70 Start: 57567, Stop: 58274, Start Num: 15

Candidate Starts for Thunderbird_70:

(Start: 15 @57567 has 290 MA's), (26, 57657), (28, 57666), (31, 57708), (32, 57714), (34, 57729), (41, 57783), (42, 57786), (46, 57807), (48, 57822), (50, 57843), (59, 57933), (64, 57981),

Gene: Timmi_69 Start: 57341, Stop: 58048, Start Num: 15

Candidate Starts for Timmi_69:

(Start: 15 @57341 has 290 MA's), (26, 57431), (28, 57440), (31, 57482), (32, 57488), (34, 57503), (41, 57557), (42, 57560), (46, 57581), (48, 57596), (50, 57617), (59, 57707), (64, 57755),

Gene: TomBombadil_70 Start: 57868, Stop: 58575, Start Num: 15

Candidate Starts for TomBombadil_70:

(Start: 15 @57868 has 290 MA's), (26, 57958), (28, 57967), (29, 57973), (31, 58009), (32, 58015), (34, 58030), (41, 58084), (42, 58087), (46, 58108), (48, 58123), (50, 58144), (59, 58234), (64, 58282),

Gene: Tomlarah_71 Start: 58194, Stop: 58889, Start Num: 15

Candidate Starts for Tomlarah_71:

(Start: 15 @58194 has 290 MA's), (26, 58284), (28, 58293), (29, 58299), (31, 58335), (32, 58341), (34, 58356), (41, 58410), (42, 58413), (46, 58434), (48, 58449), (50, 58470), (59, 58560), (64, 58608), (72, 58788),

Gene: Toni_70 Start: 57786, Stop: 58481, Start Num: 15

Candidate Starts for Toni_70:

(Start: 15 @57786 has 290 MA's), (26, 57876), (28, 57885), (29, 57891), (31, 57927), (32, 57933), (34, 57948), (41, 58002), (42, 58005), (46, 58026), (48, 58041), (50, 58062), (59, 58152), (72, 58380),

Gene: TooFast2Furius_69 Start: 57561, Stop: 58268, Start Num: 15

Candidate Starts for TooFast2Furius_69:

(Start: 15 @57561 has 290 MA's), (26, 57651), (28, 57660), (31, 57702), (32, 57708), (34, 57723), (41, 57777), (42, 57780), (46, 57801), (48, 57816), (50, 57837), (59, 57927), (64, 57975),

Gene: Tooj_68 Start: 57011, Stop: 57709, Start Num: 15

Candidate Starts for Tooj_68:

(Start: 15 @57011 has 290 MA's), (26, 57101), (28, 57110), (31, 57152), (32, 57158), (34, 57173), (41, 57227), (42, 57230), (46, 57251), (48, 57266), (50, 57287), (59, 57377), (64, 57425),

Gene: Triad_71 Start: 57220, Stop: 57918, Start Num: 15

Candidate Starts for Triad_71:

(Start: 15 @57220 has 290 MA's), (26, 57310), (28, 57319), (31, 57361), (32, 57367), (34, 57382), (41, 57436), (42, 57439), (46, 57460), (48, 57475), (50, 57496), (59, 57586), (64, 57634),

Gene: True_68 Start: 57320, Stop: 58015, Start Num: 15

Candidate Starts for True_68:

(Start: 15 @57320 has 290 MA's), (26, 57410), (28, 57419), (29, 57425), (31, 57461), (32, 57467), (34, 57482), (41, 57536), (42, 57539), (46, 57560), (48, 57575), (50, 57596), (59, 57686), (64, 57734), (72, 57914),

Gene: Trypo_71 Start: 58035, Stop: 58742, Start Num: 15

Candidate Starts for Trypo_71:

(Start: 15 @58035 has 290 MA's), (26, 58125), (28, 58134), (29, 58140), (31, 58176), (32, 58182), (34, 58197), (41, 58251), (42, 58254), (46, 58275), (48, 58290), (50, 58311), (59, 58401), (64, 58449),

Gene: TyrionL_70 Start: 57403, Stop: 58107, Start Num: 15

Candidate Starts for TyrionL_70:

(Start: 15 @57403 has 290 MA's), (26, 57493), (28, 57502), (31, 57544), (32, 57550), (34, 57565), (41, 57619), (42, 57622), (46, 57643), (48, 57658), (50, 57679), (59, 57769), (64, 57817), (72, 57997),

Gene: UAch1_71 Start: 57725, Stop: 58423, Start Num: 15

Candidate Starts for UAch1_71:

(Start: 15 @57725 has 290 MA's), (26, 57815), (28, 57824), (29, 57830), (31, 57866), (32, 57872), (34, 57887), (41, 57941), (42, 57944), (46, 57965), (48, 57980), (50, 58001), (59, 58091), (64, 58139),

Gene: UncleHowie_67 Start: 57005, Stop: 57712, Start Num: 15

Candidate Starts for UncleHowie_67:

(Start: 15 @57005 has 290 MA's), (26, 57095), (28, 57104), (29, 57110), (31, 57146), (32, 57152), (34, 57167), (41, 57221), (42, 57224), (46, 57245), (48, 57260), (50, 57281), (59, 57371), (64, 57419),

Gene: Usavi_71 Start: 58009, Stop: 58716, Start Num: 15

Candidate Starts for Usavi_71:

(Start: 15 @58009 has 290 MA's), (26, 58099), (28, 58108), (31, 58150), (32, 58156), (34, 58171), (41, 58225), (42, 58228), (46, 58249), (48, 58264), (50, 58285), (59, 58375), (64, 58423),

Gene: Vaishali24_71 Start: 57680, Stop: 58378, Start Num: 15

Candidate Starts for Vaishali24_71:

(Start: 15 @57680 has 290 MA's), (26, 57770), (28, 57779), (31, 57821), (32, 57827), (34, 57842), (41, 57896), (42, 57899), (46, 57920), (48, 57935), (50, 57956), (59, 58046), (64, 58094),

Gene: Valjean_69 Start: 57580, Stop: 58275, Start Num: 15

Candidate Starts for Valjean_69:

(Start: 15 @57580 has 290 MA's), (26, 57670), (28, 57679), (29, 57685), (31, 57721), (32, 57727), (34, 57742), (41, 57796), (42, 57799), (46, 57820), (48, 57835), (50, 57856), (59, 57946), (64, 57994), (72, 58174),

Gene: Vaticameos_67 Start: 55884, Stop: 56579, Start Num: 15

Candidate Starts for Vaticameos_67:

(Start: 15 @55884 has 290 MA's), (26, 55974), (28, 55983), (29, 55989), (31, 56025), (32, 56031), (34, 56046), (41, 56100), (42, 56103), (46, 56124), (48, 56139), (50, 56160), (59, 56250), (64, 56298), (72, 56478),

Gene: Veritas_69 Start: 57482, Stop: 58189, Start Num: 15

Candidate Starts for Veritas_69:

(Start: 15 @57482 has 290 MA's), (26, 57572), (28, 57581), (29, 57587), (31, 57623), (32, 57629), (34, 57644), (41, 57698), (42, 57701), (46, 57722), (48, 57737), (50, 57758), (59, 57848), (64, 57896),

Gene: Virapocalypse_71 Start: 57679, Stop: 58374, Start Num: 15

Candidate Starts for Virapocalypse_71:

(Start: 15 @57679 has 290 MA's), (26, 57769), (28, 57778), (29, 57784), (31, 57820), (32, 57826), (34, 57841), (41, 57895), (42, 57898), (46, 57919), (48, 57934), (50, 57955), (59, 58045), (64, 58093), (72, 58273),

Gene: Virgeve_68 Start: 57284, Stop: 57991, Start Num: 15

Candidate Starts for Virgeve_68:

(Start: 15 @57284 has 290 MA's), (26, 57374), (28, 57383), (29, 57389), (31, 57425), (32, 57431), (34, 57446), (41, 57500), (42, 57503), (46, 57524), (48, 57539), (50, 57560), (59, 57650), (64, 57698),

Gene: Vista_69 Start: 57480, Stop: 58187, Start Num: 15

Candidate Starts for Vista_69:

(Start: 15 @57480 has 290 MA's), (26, 57570), (28, 57579), (29, 57585), (31, 57621), (32, 57627), (34, 57642), (41, 57696), (42, 57699), (46, 57720), (48, 57735), (50, 57756), (59, 57846), (64, 57894),

Gene: Vivaldi_70 Start: 57767, Stop: 58474, Start Num: 15

Candidate Starts for Vivaldi_70:

(Start: 15 @57767 has 290 MA's), (26, 57857), (28, 57866), (29, 57872), (31, 57908), (32, 57914), (34, 57929), (41, 57983), (42, 57986), (46, 58007), (48, 58022), (50, 58043), (59, 58133), (64, 58181), (70, 58334),

Gene: Vortex_69 Start: 57590, Stop: 58297, Start Num: 15

Candidate Starts for Vortex_69:

(Start: 15 @57590 has 290 MA's), (26, 57680), (28, 57689), (29, 57695), (31, 57731), (32, 57737), (34, 57752), (41, 57806), (42, 57809), (46, 57830), (48, 57845), (50, 57866), (59, 57956), (64, 58004),

Gene: Wallhey_71 Start: 57587, Stop: 58294, Start Num: 15

Candidate Starts for Wallhey_71:

(Start: 15 @57587 has 290 MA's), (26, 57677), (28, 57686), (29, 57692), (31, 57728), (32, 57734), (34, 57749), (41, 57803), (42, 57806), (46, 57827), (48, 57842), (50, 57863), (59, 57953), (64, 58001),

Gene: Waterdiva_71 Start: 57857, Stop: 58564, Start Num: 15

Candidate Starts for Waterdiva_71:

(Start: 15 @57857 has 290 MA's), (26, 57947), (28, 57956), (29, 57962), (31, 57998), (32, 58004), (34, 58019), (41, 58073), (42, 58076), (46, 58097), (48, 58112), (50, 58133), (59, 58223), (64, 58271),

Gene: Weher20_67 Start: 57925, Stop: 58632, Start Num: 15

Candidate Starts for Weher20_67:

(Start: 15 @57925 has 290 MA's), (26, 58015), (28, 58024), (29, 58030), (31, 58066), (32, 58072), (34, 58087), (41, 58141), (42, 58144), (46, 58165), (48, 58180), (50, 58201), (59, 58291), (64, 58339),

Gene: Windsor_70 Start: 57870, Stop: 58577, Start Num: 15

Candidate Starts for Windsor_70:

(Start: 15 @57870 has 290 MA's), (26, 57960), (28, 57969), (31, 58011), (32, 58017), (34, 58032), (41, 58086), (42, 58089), (46, 58110), (48, 58125), (50, 58146), (59, 58236), (64, 58284),

Gene: Xavier_70 Start: 57485, Stop: 58189, Start Num: 15

Candidate Starts for Xavier_70:

(Start: 15 @57485 has 290 MA's), (26, 57575), (28, 57584), (29, 57590), (31, 57626), (32, 57632), (34, 57647), (41, 57701), (42, 57704), (46, 57725), (48, 57740), (50, 57761), (59, 57851), (64, 57899), (72, 58079),

Gene: Yoshand_71 Start: 57757, Stop: 58455, Start Num: 15

Candidate Starts for Yoshand_71:

(Start: 15 @57757 has 290 MA's), (26, 57847), (28, 57856), (31, 57898), (32, 57904), (34, 57919), (41, 57973), (42, 57976), (46, 57997), (48, 58012), (50, 58033), (59, 58123), (64, 58171), (70, 58324),

Gene: YouGoGlencoco_70 Start: 57595, Stop: 58302, Start Num: 15

Candidate Starts for YouGoGlencoco_70:

(Start: 15 @57595 has 290 MA's), (26, 57685), (28, 57694), (29, 57700), (31, 57736), (32, 57742), (34, 57757), (41, 57811), (42, 57814), (46, 57835), (48, 57850), (50, 57871), (59, 57961), (64, 58009),

Gene: Zaider_71 Start: 57820, Stop: 58515, Start Num: 15

Candidate Starts for Zaider_71:

(Start: 15 @57820 has 290 MA's), (26, 57910), (28, 57919), (29, 57925), (31, 57961), (32, 57967), (34, 57982), (41, 58036), (42, 58039), (46, 58060), (48, 58075), (50, 58096), (59, 58186), (64, 58234), (72, 58414),

Gene: Zelda_70 Start: 57935, Stop: 58642, Start Num: 15

Candidate Starts for Zelda_70:

(Start: 15 @57935 has 290 MA's), (26, 58025), (28, 58034), (29, 58040), (31, 58076), (32, 58082), (34, 58097), (41, 58151), (42, 58154), (46, 58175), (48, 58190), (50, 58211), (59, 58301), (64, 58349),

Gene: Zenteno07_78 Start: 59839, Stop: 60786, Start Num: 13

Candidate Starts for Zenteno07_78:

(1, 59476), (Start: 13 @59839 has 7 MA's), (16, 59854), (26, 59941), (28, 59950), (33, 60004), (39, 60049), (47, 60103), (49, 60118), (50, 60127), (59, 60217), (73, 60520),

Gene: Zonia_71 Start: 58038, Stop: 58745, Start Num: 15

Candidate Starts for Zonia_71:

(Start: 15 @58038 has 290 MA's), (26, 58128), (28, 58137), (29, 58143), (31, 58179), (32, 58185), (34, 58200), (41, 58254), (42, 58257), (46, 58278), (48, 58293), (50, 58314), (59, 58404), (64, 58452),