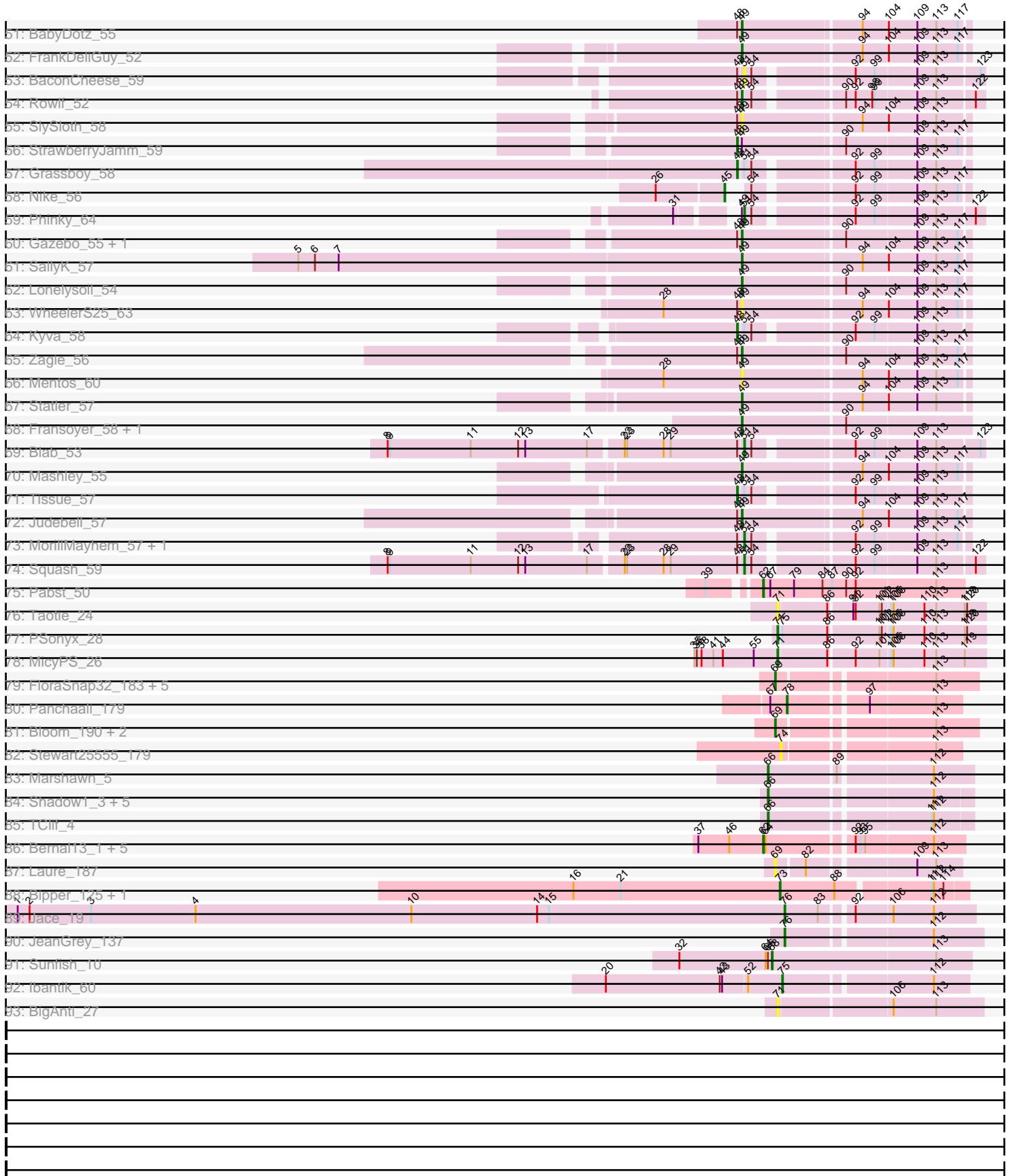


Pham 307945



Note: Tracks are now grouped by subcluster and scaled. Switching in subcluster is indicated by changes in track color. Track scale is now set by default to display the region 30 bp upstream of start 1 to 30 bp downstream of the last possible start. If this default region is judged to be packed too tightly with annotated starts, the track will be further scaled to only show that region of the ORF with annotated starts. This action will be indicated by adding "Zoomed" to the title. For starts, yellow indicates the location of called starts comprised solely of Glimmer/GeneMark auto-annotations, green indicates the location of called starts with at least 1 manual gene annotation.

Pham 307945 Report

This analysis was run 06/27/26 on database version 652.

Pham number 307945 has 294 members, 56 are drafts.

Phages represented in each track:

- Track 1 : Pharaoh_43
- Track 2 : Switzerland_51, Warrior24_52, Anon_46, Waits_51, Battleship_52, MinecraftSteve_52, JSwag_50, Rosalind_50
- Track 3 : LogiBear_50
- Track 4 : Remus_51, Strosahl_51
- Track 5 : CRB1_52
- Track 6 : Prudy_47
- Track 7 : Anthony_44
- Track 8 : Jordennis_50, Polyphemus_52
- Track 9 : WorldCup_47, CogOmlette_47, Rahalelujah_48, Bellris_47, Minispark_47
- Track 10 : Toaka_48
- Track 11 : Darrell_50
- Track 12 : LoneWolf_49
- Track 13 : Vanisoa_48
- Track 14 : PigHeaded_10
- Track 15 : Phroglets_5
- Track 16 : LadyJasley_12
- Track 17 : LilMcDreamy_72
- Track 18 : Jaylociraptor_30, Hoshi_30, TaidaOne_30, Maya_30, Esketit_30, Namu_30, FidgetOrca_30, Spectropatronm_30, IceWarrior_30, TonyStarch_30, CherryBlossom_30, TieDye_29, Indigenous_30, Rima_30, OlympicHelado_30, Meibysrarus_30
- Track 19 : Bing_31
- Track 20 : Wigberry_30
- Track 21 : SpeedDemon_770, Bantam_75
- Track 22 : DatBoi_73
- Track 23 : Mollymur_75
- Track 24 : Argena_23, EmoNemo_23, Hanem_24, Twin_23, Kabocha_25, Aloki_24, Farrylious_22, Gray_24, Amoonguss_23, Toneprano_23, Pakusa_23, MintFritos_23
- Track 25 : Beted_23, Lenoshki_23, Oogie_24
- Track 26 : Mikronejon_23
- Track 27 : Toneprano_14, Gray_14, Kabocha_14, Farrylious_14, Lenoshki_15, Chidiebere_14, Hanem_14, Pakusa_14, MintFritos_14, Beted_15, Argena_14, EmoNemo_14, Twin_14, Amoonguss_14, Oogie_15, Mikronejon_14, Aloki_14, Schomber_14
- Track 28 : ChisanaKitsune_11
- Track 29 : ChisanaKitsune_20

- Track 30 : UBSmoodge_13
- Track 31 : Chidiebere_24
- Track 32 : ScarletRaider_12, FruityLoops_11, FlyingTortilla_12
- Track 33 : Schomber_23
- Track 34 : Kudrefre_102
- Track 35 : Sephiroth_99
- Track 36 : Syleon_102
- Track 37 : Octobien14_100
- Track 38 : ModicumRichard_94
- Track 39 : Glexan_101, FairyPath_103, Becksu_100, Thimble_104, FoghornLeghorn_95, BugsBunny_101, MollyToe_96, Palpatine_103
- Track 40 : Bruin_99, Greep_106, Miniwave_97, Lilpickle_101, Nimrod_102, Petra64142_106, Eureka_101, Liveloughbron_103, Paperbeatsrock_101, DrDrey_102, ShamWow_102, BigBubba_102, Emmina_102, Brewer_98, MPhalcon_103, SirDuracell_102, Pharsalus_99, Dusk_99, StormChicken_103, TBrady12_105, BilboSwaggins_100, Stank_104, Misfit_103, Hoonter_105, Phaja_100, Daikon_102, PhatBacter_105, Tarkin_101, Elite2014_101, Manda_103, Marshmallow_99, Buck_103, ChosenOne_102, Harella_102, Command613_104, Phaux_104, Nala_104, CrystalP_101, Mindy_101, Bask21_102, Tomaszewski_97, Mosby_98, GoldenSpark_106, YassJohnny_99, Quallification_103, xkcd_105, Cookies_99, DoctorDiddles_101, Gator_100, Easy2Say_102, Adnama_106, Cactus_106, Wiggin_104, Gemini_107, Barbarian_101, Inca_99, FireRed_105, ABCat_99, Henry_99, Contagion_98, IHOP_100, TeamEdward_102, Sotrice96_103, Argent26_106, Goldilocks_105, TeardropMSU_98, BadStone_99, Sassay_97, SophKB_100, Toto_100, Icee_103, Bogg_102, Asriel_100, Pat3_99, Youngblood_105, Rimmer_100, StellaBean_101, Kanye_99, NelitzaMV_99, HufflyPuff_104, Policronamos_104, Rakim_103, Holt_107, ShereKhan_100, Kostya_102, Goku_101, GooberAzure_105, Myrale_102, Willez_97, Terminus_105, Tuco_103, Kimchi_106, Traaww1_98, Balomoji_102, Flypotenuse_98
- Track 41 : Murica_105, MISSy_103
- Track 42 : NonchalantPear_102, Gage_104, StolenFromERC_104, Xandras_101, Ptowny_98
- Track 43 : ChotaBhai_102
- Track 44 : Amao_102
- Track 45 : Theresita_48
- Track 46 : Quhwah_29
- Track 47 : NoodlelyBoi_26
- Track 48 : Hyperion_56
- Track 49 : Quammi_52, EverythinBagel_53, Llemily_54, Sillytadpoles_55, DonaldDuck_54, Viceroy_53, Casend_55, Zhafia_57, Jehoshaphat_56, Phabia_54, Rudy_52, Wayne3_56, Wheelie_54, Teehee_55
- Track 50 : Altheas_58
- Track 51 : BabyDotz_55
- Track 52 : FrankDeliGuy_52
- Track 53 : BaconCheese_59
- Track 54 : Rowlf_52
- Track 55 : SlySloth_58
- Track 56 : StrawberryJamm_59
- Track 57 : Grassboy_58
- Track 58 : Nike_56
- Track 59 : Phinky_64
- Track 60 : Gazebo_55, Namago_56
- Track 61 : SallyK_57

- Track 62 : Lonelysoil_54
- Track 63 : WheelerS25_63
- Track 64 : Kyva_58
- Track 65 : Zagie_56
- Track 66 : Mentos_60
- Track 67 : Statler_57
- Track 68 : Fransoyer_58, RubyRalph_60
- Track 69 : Blab_53
- Track 70 : Mashley_55
- Track 71 : Tissue_57
- Track 72 : Judebell_57
- Track 73 : MorillMayhem_57, Mila11_59
- Track 74 : Squash_59
- Track 75 : Pabst_50
- Track 76 : Taotie_24
- Track 77 : PSonyx_28
- Track 78 : MicyPS_26
- Track 79 : FloraSnap32_183, FrostedClock_189, Phrampa_178, Mimi_186, GoldenEssence_174, Patbob_185
- Track 80 : Panchaali_179
- Track 81 : Bloom_190, Racecar_187, Talia1610_187
- Track 82 : Stewart25555_179
- Track 83 : Marshawn_5
- Track 84 : Shadow1_3, Ximenita_5, Krueger_4, Tigress9_4, Syra333_4, Sunflower1121_3
- Track 85 : TClif_4
- Track 86 : Bernal13_1, Nairb_1, ZenTime222_1, Ibrahim_1, RonRayGun_1, Whitty_1
- Track 87 : Laure_187
- Track 88 : Bipper_125, Cracklewink_126
- Track 89 : Jace_19
- Track 90 : JeanGrey_137
- Track 91 : Sunfish_10
- Track 92 : Ibantik_60
- Track 93 : BigAnti_27

Summary of Final Annotations (See graph section above for start numbers):

The start number called the most often in the published annotations is 79, it was called in 95 of the 238 non-draft genes in the pham.

Genes that call this "Most Annotated" start:

- ABCat_99, Adnama_106, Argent26_106, Asriel_100, BadStone_99, Balomoji_102, Barbarian_101, Bask21_102, BigBubba_102, BilboSwaggins_100, Bogg_102, Brewer_98, Bruin_99, Buck_103, Cactus_106, ChosenOne_102, ChotaBhai_102, Command613_104, Contagion_98, Cookies_99, CrystalP_101, Daikon_102, DoctorDiddles_101, DrDrey_102, Dusk_99, Easy2Say_102, Elite2014_101, Emmina_102, Eureka_101, FireRed_105, Flypotenuse_98, Gage_104, Gator_100, Gemini_107, Goku_101, GoldenSpark_106, Goldilocks_105, GooberAzure_105, Greep_106, Harella_102, Henry_99, Holt_107, Hoonter_105, HufflyPuff_104,

IHOP_100, Icee_103, Inca_99, Kanye_99, Kimchi_106, Kostya_102, Lilpickle_101, Liveloughbron_103, MISSy_103, MPhalcon_103, Manda_103, Marshmallow_99, Mindy_101, Miniwave_97, Misfit_103, Mosby_98, Murica_105, Myrale_102, Nala_104, NelitzaMV_99, Nimrod_102, NonchalantPear_102, Paperbeatsrock_101, Pat3_99, Petra64142_106, Phaja_100, Pharsalus_99, PhatBacter_105, Phaux_104, Policronamos_104, Ptowny_98, Quallification_103, Rakim_103, Rimmer_100, Sassay_97, ShamWow_102, ShereKhan_100, SirDuracell_102, SophKB_100, Sotrice96_103, Stank_104, StellaBean_101, StolenFromERC_104, StormChicken_103, TBrady12_105, Tarkin_101, TeamEdward_102, TeardropMSU_98, Terminus_105, Tomaszewski_97, Toto_100, Traaww1_98, Tuco_103, Wiggin_104, Willez_97, Xandras_101, YassJohnny_99, Youngblood_105, xkcd_105,

Genes that have the "Most Annotated" start but do not call it:

- Amao_102, Becksu_100, BugsBunny_101, FairyPath_103, FoghornLeghorn_95, Glexan_101, MollyToe_96, Pabst_50, Palpatine_103, Thimble_104,

Genes that do not have the "Most Annotated" start:

- Alok_i_14, Alok_i_24, Altheas_58, Amoonguss_14, Amoonguss_23, Anon_46, Anthony_44, Argena_14, Argena_23, BabyDotz_55, BaconCheese_59, Bantam_75, Battleship_52, Bellris_47, Bernal13_1, Beted_15, Beted_23, BigAnti_27, Bing_31, Bipper_125, Blab_53, Bloom_190, CRB1_52, Casend_55, CherryBlossom_30, Chidiebere_14, Chidiebere_24, ChisanaKitsune_11, ChisanaKitsune_20, CogOmlette_47, Cracklewink_126, Darrell_50, DatBoi_73, DonaldDuck_54, EmoNemo_14, EmoNemo_23, Esketit_30, EverythinBagel_53, Farrylious_14, Farrylious_22, FidgetOrca_30, FloraSnap32_183, FlyingTortilla_12, FrankDeliGuy_52, Fransoyer_58, FrostedClock_189, FruityLoops_11, Gazebo_55, GoldenEssence_174, Grassboy_58, Gray_14, Gray_24, Hanem_14, Hanem_24, Hoshi_30, Hyperion_56, Ibantik_60, Ibrahim_1, IceWarrior_30, Indigenous_30, JSwag_50, Jace_19, Jaylociraptor_30, JeanGrey_137, Jehoshaphat_56, Jordennis_50, Judebell_57, Kabocha_14, Kabocha_25, Krueger_4, Kudrefre_102, Kyva_58, LadyJasley_12, Laure_187, Lenoshki_15, Lenoshki_23, LilMcDreamy_72, Llemily_54, LogiBear_50, LoneWolf_49, Lonelysoil_54, Marshawn_5, Mashley_55, Maya_30, Meibysrarus_30, Mentos_60, MicyPS_26, Mikronejon_14, Mikronejon_23, Mila11_59, Mimi_186, MinecraftSteve_52, Minispark_47, MintFritos_14, MintFritos_23, ModicumRichard_94, Mollymur_75, MorillMayhem_57, Nairb_1, Namago_56, Namoi_30, Nike_56, NoodlelyBoi_26, Octobien14_100, OlympicHelado_30, Oogie_15, Oogie_24, PSonyx_28, Pakusa_14, Pakusa_23, Panchaali_179, Patbob_185, Phabia_54, Pharaoh_43, Phinky_64, Phrampa_178, Phroglets_5, PigHeaded_10, Polyphemus_52, Prudy_47, Quammi_52, Quhwah_29, Racecar_187, Rahalelujah_48, Remus_51, Rima_30, RonRayGun_1, Rosalind_50, Rowlf_52, RubyRalph_60, Rudy_52, SallyK_57, ScarletRaider_12, Schomber_14, Schomber_23, Sephiroth_99, Shadow1_3, Sillytadpoles_55, SlySloth_58, Spectropatronm_30, SpeedDemon_770, Squash_59, Statler_57, Stewart25555_179, StrawberryJamm_59, Strosahl_51, Sunfish_10, Sunflower1121_3, Switzerland_51, Syleon_102, Syra333_4, TClif_4, TaidaOne_30, Talia1610_187, Taotie_24, Teehee_55, Theresita_48, TieDye_29, Tigress9_4, Tissue_57, Toaka_48, Toneprano_14, Toneprano_23, TonyStarch_30, Twin_14, Twin_23, UBSmoodge_13, Vanisoa_48, Viceroy_53, Waits_51, Warrior24_52, Wayne3_56, WheelerS25_63, Wheelie_54, Whitty_1, Wigberry_30, WorldCup_47, Ximenita_5, Zagie_56, ZenTime222_1, Zhafia_57,

Summary by start number:

Start 45:

- Found in 1 of 294 (0.3%) of genes in pham
- Manual Annotations of this start: 1 of 238
- Called 100.0% of time when present
- Phage (with cluster) where this start called: Nike_56 (EG),

Start 48:

- Found in 33 of 294 (11.2%) of genes in pham
- Manual Annotations of this start: 4 of 238
- Called 12.1% of time when present
- Phage (with cluster) where this start called: Grassboy_58 (EG), Kyva_58 (EG), StrawberryJamm_59 (EG), Tissue_57 (EG),

Start 49:

- Found in 34 of 294 (11.6%) of genes in pham
- Manual Annotations of this start: 28 of 238
- Called 94.1% of time when present
- Phage (with cluster) where this start called: Altheas_58 (EG), BabyDotz_55 (EG), Casend_55 (EG), DonaldDuck_54 (EG), EverythinBagel_53 (EG), FrankDeliGuy_52 (EG), Fransoyer_58 (EG), Gazebo_55 (EG), Hyperion_56 (EG), Jehoshaphat_56 (EG), Judebell_57 (EG), Llemily_54 (EG), Lonelysoil_54 (EG), Mashley_55 (EG), Mentos_60 (EG), Namago_56 (EG), Phabia_54 (EG), Quammi_52 (EG), Rowlf_52 (EG), RubyRalph_60 (EG), Rudy_52 (EG), SallyK_57 (EG), Sillytadpoles_55 (EG), SlySloth_58 (EG), Statler_57 (EG), Teehee_55 (EG), Viceroy_53 (EG), Wayne3_56 (EG), WheelerS25_63 (EG), Wheelie_54 (EG), Zagie_56 (EG), Zhafia_57 (EG),

Start 51:

- Found in 9 of 294 (3.1%) of genes in pham
- Manual Annotations of this start: 4 of 238
- Called 66.7% of time when present
- Phage (with cluster) where this start called: BaconCheese_59 (EG), Blab_53 (EG), Mila11_59 (EG), MorillMayhem_57 (EG), Phinky_64 (EG), Squash_59 (EG),

Start 53:

- Found in 1 of 294 (0.3%) of genes in pham
- Manual Annotations of this start: 1 of 238
- Called 100.0% of time when present
- Phage (with cluster) where this start called: Phroglets_5 (AV),

Start 56:

- Found in 1 of 294 (0.3%) of genes in pham
- No Manual Annotations of this start.
- Called 100.0% of time when present
- Phage (with cluster) where this start called: PigHeaded_10 (AV),

Start 58:

- Found in 11 of 294 (3.7%) of genes in pham
- Manual Annotations of this start: 10 of 238
- Called 100.0% of time when present
- Phage (with cluster) where this start called: Anon_46 (A15), Battleship_52 (A15), JSwag_50 (A15), MinecraftSteve_52 (A15), Prudy_47 (A2), Remus_51 (A15), Rosalind_50 (A15), Strosahl_51 (A15), Switzerland_51 (A15), Waits_51 (A15),

Warrior24_52 (A15),

Start 59:

- Found in 12 of 294 (4.1%) of genes in pham
- Manual Annotations of this start: 7 of 238
- Called 100.0% of time when present
- Phage (with cluster) where this start called: Bellris_47 (A9), CRB1_52 (A2), CogOmlette_47 (A9), Darrell_50 (A9), Jordennis_50 (A6), Minispark_47 (A9), Pharaoh_43 (A12), Polyphemus_52 (A6), Rahalelujah_48 (A9), Toaka_48 (A9), Vanisoa_48 (A9), WorldCup_47 (A9),

Start 60:

- Found in 1 of 294 (0.3%) of genes in pham
- No Manual Annotations of this start.
- Called 100.0% of time when present
- Phage (with cluster) where this start called: LogiBear_50 (A15),

Start 61:

- Found in 23 of 294 (7.8%) of genes in pham
- Manual Annotations of this start: 11 of 238
- Called 100.0% of time when present
- Phage (with cluster) where this start called: Alok_14 (DQ), Amoonguss_14 (DQ), Argena_14 (DQ), Beted_15 (DQ), Chidiebere_14 (DQ), ChisanaKitsune_11 (DQ), EmoNemo_14 (DQ), Farrylious_14 (DQ), FlyingTortilla_12 (DQ), FruityLoops_11 (DQ), Gray_14 (DQ), Hanem_14 (DQ), Kabocha_14 (DQ), Lenoshki_15 (DQ), Mikronejon_14 (DQ), MintFritos_14 (DQ), Oogie_15 (DQ), Pakusa_14 (DQ), ScarletRaider_12 (DQ), Schomber_14 (DQ), Toneprano_14 (DQ), Twin_14 (DQ), UBSmoodge_13 (DQ),

Start 62:

- Found in 7 of 294 (2.4%) of genes in pham
- Manual Annotations of this start: 7 of 238
- Called 100.0% of time when present
- Phage (with cluster) where this start called: Bernal13_1 (T), Ibrahim_1 (T), Nairb_1 (T), Pabst_50 (EK1), RonRayGun_1 (T), Whitty_1 (T), ZenTime222_1 (T),

Start 63:

- Found in 4 of 294 (1.4%) of genes in pham
- Manual Annotations of this start: 4 of 238
- Called 100.0% of time when present
- Phage (with cluster) where this start called: Bantam_75 (DL), DatBoi_73 (DL), Mollymur_75 (DL), SpeedDemon_770 (DL),

Start 64:

- Found in 8 of 294 (2.7%) of genes in pham
- Manual Annotations of this start: 1 of 238
- Called 12.5% of time when present
- Phage (with cluster) where this start called: LoneWolf_49 (A9),

Start 65:

- Found in 1 of 294 (0.3%) of genes in pham
- Manual Annotations of this start: 1 of 238
- Called 100.0% of time when present

- Phage (with cluster) where this start called: Theresita_48 (EA7),

Start 66:

- Found in 9 of 294 (3.1%) of genes in pham
- Manual Annotations of this start: 8 of 238
- Called 88.9% of time when present
- Phage (with cluster) where this start called: Krueger_4 (K6), Marshawn_5 (K6), Shadow1_3 (K6), Sunflower1121_3 (K6), Syra333_4 (K6), TClif_4 (K6), Tigress9_4 (K6), Ximenita_5 (K6),

Start 67:

- Found in 3 of 294 (1.0%) of genes in pham
- Manual Annotations of this start: 1 of 238
- Called 33.3% of time when present
- Phage (with cluster) where this start called: Anthony_44 (A20),

Start 68:

- Found in 2 of 294 (0.7%) of genes in pham
- Manual Annotations of this start: 2 of 238
- Called 100.0% of time when present
- Phage (with cluster) where this start called: LilMcDreamy_72 (B12), Sunfish_10 (singleton),

Start 69:

- Found in 11 of 294 (3.7%) of genes in pham
- Manual Annotations of this start: 7 of 238
- Called 100.0% of time when present
- Phage (with cluster) where this start called: Bloom_190 (FC), FloraSnap32_183 (FC), FrostedClock_189 (FC), GoldenEssence_174 (FC), LadyJasley_12 (AV), Laure_187 (UNK), Mimi_186 (FC), Patbob_185 (FC), Phrampa_178 (FC), Racecar_187 (FC), Talia1610_187 (FC),

Start 70:

- Found in 126 of 294 (42.9%) of genes in pham
- Manual Annotations of this start: 2 of 238
- Called 2.4% of time when present
- Phage (with cluster) where this start called: Amao_102 (E), Chidiebere_24 (DQ), Mikronejon_23 (DQ),

Start 71:

- Found in 24 of 294 (8.2%) of genes in pham
- Manual Annotations of this start: 22 of 238
- Called 100.0% of time when present
- Phage (with cluster) where this start called: BigAnti_27 (singleton), Bing_31 (BI5), CherryBlossom_30 (BI1), Esketit_30 (BI1), FidgetOrca_30 (BI1), Hoshi_30 (BI1), IceWarrior_30 (BI1), Indigenous_30 (BI1), Jaylociraptor_30 (BI1), Maya_30 (BI1), Meibysrarus_30 (BI1), MicyPS_26 (EQ), Namu_30 (BI1), NoodlelyBoi_26 (EC), OlympicHelado_30 (BI1), PSonyx_28 (EQ), Quhwah_29 (EC), Rima_30 (BI1), Spectropatronm_30 (BI1), TaidaOne_30 (BI1), Taotie_24 (EQ), TieDye_29 (BI1), TonyStarch_30 (BI1), Wigberry_30 (BI5),

Start 72:

- Found in 19 of 294 (6.5%) of genes in pham

- Manual Annotations of this start: 7 of 238
- Called 89.5% of time when present
- Phage (with cluster) where this start called: Aloki_24 (DQ), Amoonguss_23 (DQ), Argena_23 (DQ), Beted_23 (DQ), ChisanaKitsune_20 (DQ), EmoNemo_23 (DQ), Farrylious_22 (DQ), Gray_24 (DQ), Hanem_24 (DQ), Kabocha_25 (DQ), Lenoshki_23 (DQ), MintFritos_23 (DQ), Oogie_24 (DQ), Pakusa_23 (DQ), Schomber_23 (DQ), Toneprano_23 (DQ), Twin_23 (DQ),

Start 73:

- Found in 3 of 294 (1.0%) of genes in pham
- Manual Annotations of this start: 3 of 238
- Called 100.0% of time when present
- Phage (with cluster) where this start called: Bipper_125 (Y), Cracklewink_126 (Y), ModicumRichard_94 (DZ),

Start 74:

- Found in 1 of 294 (0.3%) of genes in pham
- No Manual Annotations of this start.
- Called 100.0% of time when present
- Phage (with cluster) where this start called: Stewart25555_179 (FC),

Start 75:

- Found in 19 of 294 (6.5%) of genes in pham
- Manual Annotations of this start: 5 of 238
- Called 26.3% of time when present
- Phage (with cluster) where this start called: Ibantik_60 (singleton), Kudrefre_102 (DU1), Octobien14_100 (DU1), Sephiroth_99 (DU1), Syleon_102 (DU1),

Start 76:

- Found in 2 of 294 (0.7%) of genes in pham
- Manual Annotations of this start: 2 of 238
- Called 100.0% of time when present
- Phage (with cluster) where this start called: Jace_19 (singleton), JeanGrey_137 (singleton),

Start 78:

- Found in 1 of 294 (0.3%) of genes in pham
- Manual Annotations of this start: 1 of 238
- Called 100.0% of time when present
- Phage (with cluster) where this start called: Panchaali_179 (FC),

Start 79:

- Found in 113 of 294 (38.4%) of genes in pham
- Manual Annotations of this start: 95 of 238
- Called 91.2% of time when present
- Phage (with cluster) where this start called: ABCat_99 (E), Adnama_106 (E), Argent26_106 (E), Asriel_100 (E), BadStone_99 (E), Balomoji_102 (E), Barbarian_101 (E), Bask21_102 (E), BigBubba_102 (E), BilboSwaggins_100 (E), Bogg_102 (E), Brewer_98 (E), Bruin_99 (E), Buck_103 (E), Cactus_106 (E), ChosenOne_102 (E), ChotaBhai_102 (E), Command613_104 (E), Contagion_98 (E), Cookies_99 (E), CrystalP_101 (E), Daikon_102 (E), DoctorDiddles_101 (E), DrDrey_102 (E), Dusk_99 (E), Easy2Say_102 (E), Elite2014_101 (E), Emmina_102 (E), Eureka_101 (E), FireRed_105 (E), Flypotenuse_98 (E), Gage_104 (E),

Gator_100 (E), Gemini_107 (E), Goku_101 (E), GoldenSpark_106 (E), Goldilocks_105 (E), GooberAzure_105 (E), Greep_106 (E), Harella_102 (E), Henry_99 (E), Holt_107 (E), Hoonter_105 (E), HufflyPuff_104 (E), IHOP_100 (E), Icee_103 (E), Inca_99 (E), Kanye_99 (E), Kimchi_106 (E), Kostya_102 (E), Lilpickle_101 (E), Liveloughbron_103 (E), MISSy_103 (E), MPhalcon_103 (E), Manda_103 (E), Marshmallow_99 (E), Mindy_101 (E), Miniwave_97 (E), Misfit_103 (E), Mosby_98 (E), Murica_105 (E), Myrale_102 (E), Nala_104 (E), NelitzaMV_99 (E), Nimrod_102 (E), NonchalantPear_102 (E), Paperbeatsrock_101 (E), Pat3_99 (E), Petra64142_106 (E), Phaja_100 (E), Pharsalus_99 (E), PhatBacter_105 (E), Phaux_104 (E), Policronamos_104 (E), Ptowny_98 (E), Quallification_103 (E), Rakim_103 (E), Rimmer_100 (E), Sassay_97 (E), ShamWow_102 (E), ShereKhan_100 (E), SirDuracell_102 (E), SophKB_100 (E), Sotrice96_103 (E), Stank_104 (E), StellaBean_101 (E), StolenFromERC_104 (E), StormChicken_103 (E), TBrady12_105 (E), Tarkin_101 (E), TeamEdward_102 (E), TeardropMSU_98 (E), Terminus_105 (E), Tomaszewski_97 (E), Toto_100 (E), Traaww1_98 (E), Tuco_103 (E), Wiggin_104 (E), Willez_97 (E), Xandras_101 (E), YassJohnny_99 (E), Youngblood_105 (E), xkcd_105 (E),

Start 88:

- Found in 133 of 294 (45.2%) of genes in pham
- Manual Annotations of this start: 4 of 238
- Called 6.0% of time when present
- Phage (with cluster) where this start called: Becksu_100 (E), BugsBunny_101 (E), FairyPath_103 (E), FoghornLeghorn_95 (E), Glexan_101 (E), MollyToe_96 (E), Palpatine_103 (E), Thimble_104 (E),

Summary by clusters:

There are 26 clusters represented in this pham: DL, singleton, FC, DZ, K6, DQ, A15, BI5, A12, A2, A6, A9, DU1, E, EG, EC, T, AV, Y, UNK, EQ, EA7, BI1, A20, B12, EK1,

Info for manual annotations of cluster A12:

- Start number 59 was manually annotated 1 time for cluster A12.

Info for manual annotations of cluster A15:

- Start number 58 was manually annotated 10 times for cluster A15.

Info for manual annotations of cluster A20:

- Start number 67 was manually annotated 1 time for cluster A20.

Info for manual annotations of cluster A6:

- Start number 59 was manually annotated 2 times for cluster A6.

Info for manual annotations of cluster A9:

- Start number 59 was manually annotated 4 times for cluster A9.
- Start number 64 was manually annotated 1 time for cluster A9.

Info for manual annotations of cluster AV:

- Start number 53 was manually annotated 1 time for cluster AV.
- Start number 69 was manually annotated 1 time for cluster AV.

Info for manual annotations of cluster B12:

- Start number 68 was manually annotated 1 time for cluster B12.

Info for manual annotations of cluster B11:

- Start number 71 was manually annotated 16 times for cluster B11.

Info for manual annotations of cluster B15:

- Start number 71 was manually annotated 2 times for cluster B15.

Info for manual annotations of cluster DL:

- Start number 63 was manually annotated 4 times for cluster DL.

Info for manual annotations of cluster DQ:

- Start number 61 was manually annotated 11 times for cluster DQ.
- Start number 70 was manually annotated 1 time for cluster DQ.
- Start number 72 was manually annotated 7 times for cluster DQ.

Info for manual annotations of cluster DU1:

- Start number 75 was manually annotated 4 times for cluster DU1.

Info for manual annotations of cluster DZ:

- Start number 73 was manually annotated 1 time for cluster DZ.

Info for manual annotations of cluster E:

- Start number 70 was manually annotated 1 time for cluster E.
- Start number 79 was manually annotated 95 times for cluster E.
- Start number 88 was manually annotated 4 times for cluster E.

Info for manual annotations of cluster EA7:

- Start number 65 was manually annotated 1 time for cluster EA7.

Info for manual annotations of cluster EC:

- Start number 71 was manually annotated 2 times for cluster EC.

Info for manual annotations of cluster EG:

- Start number 45 was manually annotated 1 time for cluster EG.
- Start number 48 was manually annotated 4 times for cluster EG.
- Start number 49 was manually annotated 28 times for cluster EG.
- Start number 51 was manually annotated 4 times for cluster EG.

Info for manual annotations of cluster EK1:

- Start number 62 was manually annotated 1 time for cluster EK1.

Info for manual annotations of cluster EQ:

- Start number 71 was manually annotated 2 times for cluster EQ.

Info for manual annotations of cluster FC:

- Start number 69 was manually annotated 6 times for cluster FC.
- Start number 78 was manually annotated 1 time for cluster FC.

Info for manual annotations of cluster K6:

- Start number 66 was manually annotated 8 times for cluster K6.

Info for manual annotations of cluster T:

- Start number 62 was manually annotated 6 times for cluster T.

Info for manual annotations of cluster Y:

- Start number 73 was manually annotated 2 times for cluster Y.

Gene Information:

Gene: ABCat_99 Start: 61561, Stop: 61758, Start Num: 79

Candidate Starts for ABCat_99:

(25, 61384), (Start: 70 @61540 has 2 MA's), (Start: 79 @61561 has 95 MA's), (Start: 88 @61606 has 4 MA's), (92, 61624), (105, 61666), (112, 61720),

Gene: Adnama_106 Start: 60871, Stop: 61068, Start Num: 79

Candidate Starts for Adnama_106:

(25, 60694), (Start: 70 @60850 has 2 MA's), (Start: 79 @60871 has 95 MA's), (Start: 88 @60916 has 4 MA's), (92, 60934), (105, 60976), (112, 61030),

Gene: Alok_i_24 Start: 11841, Stop: 12056, Start Num: 72

Candidate Starts for Alok_i_24:

(47, 11784), (Start: 70 @11838 has 2 MA's), (Start: 72 @11841 has 7 MA's), (Start: 88 @11898 has 4 MA's), (96, 11931), (100, 11943), (101, 11946), (113, 12015),

Gene: Alok_i_14 Start: 5685, Stop: 5897, Start Num: 61

Candidate Starts for Alok_i_14:

(Start: 61 @5685 has 11 MA's), (101, 5799), (102, 5802), (103, 5805), (106, 5814), (108, 5838), (109, 5844), (110, 5853), (113, 5868), (114, 5877), (115, 5886),

Gene: Altheas_58 Start: 42617, Stop: 42345, Start Num: 49

Candidate Starts for Altheas_58:

(Start: 48 @42623 has 4 MA's), (Start: 49 @42617 has 28 MA's), (90, 42494), (109, 42407), (113, 42383),

Gene: Amao_102 Start: 60964, Stop: 61182, Start Num: 70

Candidate Starts for Amao_102:

(25, 60808), (Start: 70 @60964 has 2 MA's), (Start: 79 @60985 has 95 MA's), (Start: 88 @61030 has 4 MA's), (92, 61048), (105, 61090), (112, 61144),

Gene: Amoonguss_14 Start: 5685, Stop: 5897, Start Num: 61

Candidate Starts for Amoonguss_14:

(Start: 61 @5685 has 11 MA's), (101, 5799), (102, 5802), (103, 5805), (106, 5814), (108, 5838), (109, 5844), (110, 5853), (113, 5868), (114, 5877), (115, 5886),

Gene: Amoonguss_23 Start: 11844, Stop: 12059, Start Num: 72

Candidate Starts for Amoonguss_23:

(47, 11787), (Start: 70 @11841 has 2 MA's), (Start: 72 @11844 has 7 MA's), (Start: 88 @11901 has 4 MA's), (96, 11934), (100, 11946), (101, 11949), (113, 12018),

Gene: Anon_46 Start: 30067, Stop: 29819, Start Num: 58

Candidate Starts for Anon_46:

(Start: 58 @30067 has 10 MA's), (101, 29935), (112, 29869),

Gene: Anthony_44 Start: 30206, Stop: 29964, Start Num: 67
Candidate Starts for Anthony_44:
(Start: 67 @30206 has 1 MA's), (81, 30173), (92, 30113), (100, 30086), (112, 30017),

Gene: Argena_23 Start: 11841, Stop: 12056, Start Num: 72
Candidate Starts for Argena_23:
(47, 11784), (Start: 70 @11838 has 2 MA's), (Start: 72 @11841 has 7 MA's), (Start: 88 @11898 has 4 MA's), (96, 11931), (100, 11943), (101, 11946), (113, 12015),

Gene: Argena_14 Start: 5685, Stop: 5897, Start Num: 61
Candidate Starts for Argena_14:
(Start: 61 @5685 has 11 MA's), (101, 5799), (102, 5802), (103, 5805), (106, 5814), (108, 5838), (109, 5844), (110, 5853), (113, 5868), (114, 5877), (115, 5886),

Gene: Argent26_106 Start: 60795, Stop: 60992, Start Num: 79
Candidate Starts for Argent26_106:
(25, 60618), (Start: 70 @60774 has 2 MA's), (Start: 79 @60795 has 95 MA's), (Start: 88 @60840 has 4 MA's), (92, 60858), (105, 60900), (112, 60954),

Gene: Asriel_100 Start: 59208, Stop: 59405, Start Num: 79
Candidate Starts for Asriel_100:
(25, 59031), (Start: 70 @59187 has 2 MA's), (Start: 79 @59208 has 95 MA's), (Start: 88 @59253 has 4 MA's), (92, 59271), (105, 59313), (112, 59367),

Gene: BabyDotz_55 Start: 42840, Stop: 42568, Start Num: 49
Candidate Starts for BabyDotz_55:
(Start: 48 @42843 has 4 MA's), (Start: 49 @42840 has 28 MA's), (94, 42696), (104, 42666), (109, 42630), (113, 42606), (117, 42579),

Gene: BaconCheese_59 Start: 43496, Stop: 43224, Start Num: 51
Candidate Starts for BaconCheese_59:
(Start: 48 @43502 has 4 MA's), (Start: 51 @43496 has 4 MA's), (54, 43487), (92, 43379), (99, 43355), (109, 43304), (113, 43280), (123, 43229),

Gene: BadStone_99 Start: 61130, Stop: 61327, Start Num: 79
Candidate Starts for BadStone_99:
(25, 60953), (Start: 70 @61109 has 2 MA's), (Start: 79 @61130 has 95 MA's), (Start: 88 @61175 has 4 MA's), (92, 61193), (105, 61235), (112, 61289),

Gene: Balomoji_102 Start: 60991, Stop: 61188, Start Num: 79
Candidate Starts for Balomoji_102:
(25, 60814), (Start: 70 @60970 has 2 MA's), (Start: 79 @60991 has 95 MA's), (Start: 88 @61036 has 4 MA's), (92, 61054), (105, 61096), (112, 61150),

Gene: Bantam_75 Start: 53471, Stop: 53229, Start Num: 63
Candidate Starts for Bantam_75:
(Start: 63 @53471 has 4 MA's), (Start: 75 @53450 has 5 MA's), (106, 53327), (112, 53276),

Gene: Barbarian_101 Start: 59208, Stop: 59405, Start Num: 79
Candidate Starts for Barbarian_101:
(25, 59031), (Start: 70 @59187 has 2 MA's), (Start: 79 @59208 has 95 MA's), (Start: 88 @59253 has 4 MA's), (92, 59271), (105, 59313), (112, 59367),

Gene: Bask21_102 Start: 59847, Stop: 60044, Start Num: 79

Candidate Starts for Bask21_102:

(25, 59670), (Start: 70 @59826 has 2 MA's), (Start: 79 @59847 has 95 MA's), (Start: 88 @59892 has 4 MA's), (92, 59910), (105, 59952), (112, 60006),

Gene: Battleship_52 Start: 31061, Stop: 30813, Start Num: 58

Candidate Starts for Battleship_52:

(Start: 58 @31061 has 10 MA's), (101, 30929), (112, 30863),

Gene: Becksu_100 Start: 61229, Stop: 61381, Start Num: 88

Candidate Starts for Becksu_100:

(25, 61007), (Start: 70 @61163 has 2 MA's), (Start: 79 @61184 has 95 MA's), (Start: 88 @61229 has 4 MA's), (92, 61247), (105, 61289), (112, 61343),

Gene: Bellris_47 Start: 31845, Stop: 31609, Start Num: 59

Candidate Starts for Bellris_47:

(18, 32046), (30, 31947), (Start: 59 @31845 has 7 MA's), (Start: 75 @31821 has 5 MA's), (112, 31653),

Gene: Bernal13_1 Start: 89, Stop: 325, Start Num: 62

Candidate Starts for Bernal13_1:

(37, 8), (46, 47), (Start: 62 @89 has 7 MA's), (Start: 64 @92 has 1 MA's), (92, 191), (93, 197), (95, 203), (112, 287),

Gene: Beted_23 Start: 11467, Stop: 11682, Start Num: 72

Candidate Starts for Beted_23:

(Start: 70 @11464 has 2 MA's), (Start: 72 @11467 has 7 MA's), (Start: 88 @11524 has 4 MA's), (96, 11557), (101, 11572), (113, 11641),

Gene: Beted_15 Start: 5582, Stop: 5794, Start Num: 61

Candidate Starts for Beted_15:

(Start: 61 @5582 has 11 MA's), (101, 5696), (102, 5699), (103, 5702), (106, 5711), (108, 5735), (109, 5741), (110, 5750), (113, 5765), (114, 5774), (115, 5783),

Gene: BigAnti_27 Start: 33173, Stop: 33421, Start Num: 71

Candidate Starts for BigAnti_27:

(Start: 71 @33173 has 22 MA's), (106, 33308), (113, 33362),

Gene: BigBubba_102 Start: 59904, Stop: 60101, Start Num: 79

Candidate Starts for BigBubba_102:

(25, 59727), (Start: 70 @59883 has 2 MA's), (Start: 79 @59904 has 95 MA's), (Start: 88 @59949 has 4 MA's), (92, 59967), (105, 60009), (112, 60063),

Gene: BilboSwaggins_100 Start: 61530, Stop: 61727, Start Num: 79

Candidate Starts for BilboSwaggins_100:

(25, 61353), (Start: 70 @61509 has 2 MA's), (Start: 79 @61530 has 95 MA's), (Start: 88 @61575 has 4 MA's), (92, 61593), (105, 61635), (112, 61689),

Gene: Bing_31 Start: 25537, Stop: 25779, Start Num: 71

Candidate Starts for Bing_31:

(Start: 71 @25537 has 22 MA's), (113, 25729), (115, 25747),

Gene: Bipper_125 Start: 73005, Stop: 73226, Start Num: 73

Candidate Starts for Bipper_125:

(16, 72744), (21, 72804), (Start: 73 @73005 has 3 MA's), (Start: 88 @73074 has 4 MA's), (111, 73182), (112, 73185), (114, 73197),

Gene: Blab_53 Start: 41667, Stop: 41395, Start Num: 51

Candidate Starts for Blab_53:

(8, 42102), (9, 42099), (11, 41997), (12, 41937), (13, 41928), (17, 41850), (22, 41811), (23, 41808), (28, 41763), (29, 41754), (Start: 48 @41673 has 4 MA's), (Start: 51 @41667 has 4 MA's), (54, 41658), (92, 41550), (99, 41526), (109, 41475), (113, 41451), (123, 41400),

Gene: Bloom_190 Start: 124505, Stop: 124735, Start Num: 69

Candidate Starts for Bloom_190:

(Start: 69 @124505 has 7 MA's), (113, 124682),

Gene: Bogg_102 Start: 61071, Stop: 61268, Start Num: 79

Candidate Starts for Bogg_102:

(25, 60894), (Start: 70 @61050 has 2 MA's), (Start: 79 @61071 has 95 MA's), (Start: 88 @61116 has 4 MA's), (92, 61134), (105, 61176), (112, 61230),

Gene: Brewer_98 Start: 59729, Stop: 59926, Start Num: 79

Candidate Starts for Brewer_98:

(25, 59552), (Start: 70 @59708 has 2 MA's), (Start: 79 @59729 has 95 MA's), (Start: 88 @59774 has 4 MA's), (92, 59792), (105, 59834), (112, 59888),

Gene: Bruin_99 Start: 60236, Stop: 60433, Start Num: 79

Candidate Starts for Bruin_99:

(25, 60059), (Start: 70 @60215 has 2 MA's), (Start: 79 @60236 has 95 MA's), (Start: 88 @60281 has 4 MA's), (92, 60299), (105, 60341), (112, 60395),

Gene: Buck_103 Start: 62073, Stop: 62270, Start Num: 79

Candidate Starts for Buck_103:

(25, 61896), (Start: 70 @62052 has 2 MA's), (Start: 79 @62073 has 95 MA's), (Start: 88 @62118 has 4 MA's), (92, 62136), (105, 62178), (112, 62232),

Gene: BugsBunny_101 Start: 61595, Stop: 61747, Start Num: 88

Candidate Starts for BugsBunny_101:

(25, 61373), (Start: 70 @61529 has 2 MA's), (Start: 79 @61550 has 95 MA's), (Start: 88 @61595 has 4 MA's), (92, 61613), (105, 61655), (112, 61709),

Gene: CRB1_52 Start: 33225, Stop: 32989, Start Num: 59

Candidate Starts for CRB1_52:

(30, 33327), (33, 33315), (Start: 59 @33225 has 7 MA's), (89, 33135), (112, 33024),

Gene: Cactus_106 Start: 60490, Stop: 60687, Start Num: 79

Candidate Starts for Cactus_106:

(25, 60313), (Start: 70 @60469 has 2 MA's), (Start: 79 @60490 has 95 MA's), (Start: 88 @60535 has 4 MA's), (92, 60553), (105, 60595), (112, 60649),

Gene: Casend_55 Start: 42251, Stop: 41979, Start Num: 49

Candidate Starts for Casend_55:

(Start: 48 @42254 has 4 MA's), (Start: 49 @42251 has 28 MA's), (90, 42128), (109, 42041), (113, 42017), (117, 41990),

Gene: CherryBlossom_30 Start: 25644, Stop: 25883, Start Num: 71

Candidate Starts for CherryBlossom_30:

(Start: 71 @25644 has 22 MA's), (108, 25803), (113, 25833),

Gene: Chidiebere_14 Start: 5685, Stop: 5897, Start Num: 61

Candidate Starts for Chidiebere_14:

(Start: 61 @5685 has 11 MA's), (101, 5799), (102, 5802), (103, 5805), (106, 5814), (108, 5838), (109, 5844), (110, 5853), (113, 5868), (114, 5877), (115, 5886),

Gene: Chidiebere_24 Start: 11838, Stop: 12056, Start Num: 70

Candidate Starts for Chidiebere_24:

(47, 11784), (Start: 70 @11838 has 2 MA's), (Start: 72 @11841 has 7 MA's), (Start: 88 @11898 has 4 MA's), (96, 11931), (101, 11946), (110, 12000), (113, 12015),

Gene: ChisanaKitsune_11 Start: 4663, Stop: 4869, Start Num: 61

Candidate Starts for ChisanaKitsune_11:

(Start: 61 @4663 has 11 MA's), (80, 4693), (85, 4726), (98, 4762), (103, 4777), (106, 4786), (108, 4810), (109, 4816), (114, 4849),

Gene: ChisanaKitsune_20 Start: 10536, Stop: 10751, Start Num: 72

Candidate Starts for ChisanaKitsune_20:

(Start: 70 @10533 has 2 MA's), (Start: 72 @10536 has 7 MA's), (Start: 88 @10593 has 4 MA's), (96, 10626), (101, 10641), (110, 10695), (113, 10710),

Gene: ChosenOne_102 Start: 60439, Stop: 60636, Start Num: 79

Candidate Starts for ChosenOne_102:

(25, 60262), (Start: 70 @60418 has 2 MA's), (Start: 79 @60439 has 95 MA's), (Start: 88 @60484 has 4 MA's), (92, 60502), (105, 60544), (112, 60598),

Gene: ChotaBhai_102 Start: 60849, Stop: 61046, Start Num: 79

Candidate Starts for ChotaBhai_102:

(25, 60672), (Start: 70 @60828 has 2 MA's), (Start: 79 @60849 has 95 MA's), (Start: 88 @60894 has 4 MA's), (92, 60912), (112, 61008),

Gene: CogOmlette_47 Start: 31842, Stop: 31606, Start Num: 59

Candidate Starts for CogOmlette_47:

(18, 32043), (30, 31944), (Start: 59 @31842 has 7 MA's), (Start: 75 @31818 has 5 MA's), (112, 31650),

Gene: Command613_104 Start: 61005, Stop: 61202, Start Num: 79

Candidate Starts for Command613_104:

(25, 60828), (Start: 70 @60984 has 2 MA's), (Start: 79 @61005 has 95 MA's), (Start: 88 @61050 has 4 MA's), (92, 61068), (105, 61110), (112, 61164),

Gene: Contagion_98 Start: 60598, Stop: 60795, Start Num: 79

Candidate Starts for Contagion_98:

(25, 60421), (Start: 70 @60577 has 2 MA's), (Start: 79 @60598 has 95 MA's), (Start: 88 @60643 has 4 MA's), (92, 60661), (105, 60703), (112, 60757),

Gene: Cookies_99 Start: 60775, Stop: 60972, Start Num: 79

Candidate Starts for Cookies_99:

(25, 60598), (Start: 70 @60754 has 2 MA's), (Start: 79 @60775 has 95 MA's), (Start: 88 @60820 has 4 MA's), (92, 60838), (105, 60880), (112, 60934),

Gene: Cracklewink_126 Start: 72157, Stop: 72378, Start Num: 73
Candidate Starts for Cracklewink_126:
(16, 71896), (21, 71956), (Start: 73 @72157 has 3 MA's), (Start: 88 @72226 has 4 MA's), (111, 72334),
(112, 72337), (114, 72349),

Gene: CrystalP_101 Start: 61530, Stop: 61727, Start Num: 79
Candidate Starts for CrystalP_101:
(25, 61353), (Start: 70 @61509 has 2 MA's), (Start: 79 @61530 has 95 MA's), (Start: 88 @61575 has 4
MA's), (92, 61593), (105, 61635), (112, 61689),

Gene: Daikon_102 Start: 60404, Stop: 60601, Start Num: 79
Candidate Starts for Daikon_102:
(25, 60227), (Start: 70 @60383 has 2 MA's), (Start: 79 @60404 has 95 MA's), (Start: 88 @60449 has 4
MA's), (92, 60467), (105, 60509), (112, 60563),

Gene: Darrell_50 Start: 32937, Stop: 32701, Start Num: 59
Candidate Starts for Darrell_50:
(30, 33039), (Start: 59 @32937 has 7 MA's), (Start: 75 @32913 has 5 MA's), (112, 32745),

Gene: DatBoi_73 Start: 53464, Stop: 53222, Start Num: 63
Candidate Starts for DatBoi_73:
(Start: 63 @53464 has 4 MA's), (Start: 75 @53443 has 5 MA's), (112, 53269),

Gene: DoctorDiddles_101 Start: 60253, Stop: 60450, Start Num: 79
Candidate Starts for DoctorDiddles_101:
(25, 60076), (Start: 70 @60232 has 2 MA's), (Start: 79 @60253 has 95 MA's), (Start: 88 @60298 has 4
MA's), (92, 60316), (105, 60358), (112, 60412),

Gene: DonaldDuck_54 Start: 41600, Stop: 41328, Start Num: 49
Candidate Starts for DonaldDuck_54:
(Start: 48 @41603 has 4 MA's), (Start: 49 @41600 has 28 MA's), (90, 41477), (109, 41390), (113,
41366), (117, 41339),

Gene: DrDrey_102 Start: 62268, Stop: 62465, Start Num: 79
Candidate Starts for DrDrey_102:
(25, 62091), (Start: 70 @62247 has 2 MA's), (Start: 79 @62268 has 95 MA's), (Start: 88 @62313 has 4
MA's), (92, 62331), (105, 62373), (112, 62427),

Gene: Dusk_99 Start: 60790, Stop: 60987, Start Num: 79
Candidate Starts for Dusk_99:
(25, 60613), (Start: 70 @60769 has 2 MA's), (Start: 79 @60790 has 95 MA's), (Start: 88 @60835 has 4
MA's), (92, 60853), (105, 60895), (112, 60949),

Gene: Easy2Say_102 Start: 61262, Stop: 61459, Start Num: 79
Candidate Starts for Easy2Say_102:
(25, 61085), (Start: 70 @61241 has 2 MA's), (Start: 79 @61262 has 95 MA's), (Start: 88 @61307 has 4
MA's), (92, 61325), (105, 61367), (112, 61421),

Gene: Elite2014_101 Start: 60438, Stop: 60635, Start Num: 79
Candidate Starts for Elite2014_101:
(25, 60261), (Start: 70 @60417 has 2 MA's), (Start: 79 @60438 has 95 MA's), (Start: 88 @60483 has 4
MA's), (92, 60501), (105, 60543), (112, 60597),

Gene: Emmina_102 Start: 60213, Stop: 60410, Start Num: 79
Candidate Starts for Emmina_102:
(25, 60036), (Start: 70 @60192 has 2 MA's), (Start: 79 @60213 has 95 MA's), (Start: 88 @60258 has 4 MA's), (92, 60276), (105, 60318), (112, 60372),

Gene: EmoNemo_23 Start: 11841, Stop: 12056, Start Num: 72
Candidate Starts for EmoNemo_23:
(47, 11784), (Start: 70 @11838 has 2 MA's), (Start: 72 @11841 has 7 MA's), (Start: 88 @11898 has 4 MA's), (96, 11931), (100, 11943), (101, 11946), (113, 12015),

Gene: EmoNemo_14 Start: 5685, Stop: 5897, Start Num: 61
Candidate Starts for EmoNemo_14:
(Start: 61 @5685 has 11 MA's), (101, 5799), (102, 5802), (103, 5805), (106, 5814), (108, 5838), (109, 5844), (110, 5853), (113, 5868), (114, 5877), (115, 5886),

Gene: Esketit_30 Start: 25627, Stop: 25866, Start Num: 71
Candidate Starts for Esketit_30:
(Start: 71 @25627 has 22 MA's), (108, 25786), (113, 25816),

Gene: Eureka_101 Start: 61401, Stop: 61598, Start Num: 79
Candidate Starts for Eureka_101:
(25, 61224), (Start: 70 @61380 has 2 MA's), (Start: 79 @61401 has 95 MA's), (Start: 88 @61446 has 4 MA's), (92, 61464), (105, 61506), (112, 61560),

Gene: EverythinBagel_53 Start: 41961, Stop: 41689, Start Num: 49
Candidate Starts for EverythinBagel_53:
(Start: 48 @41964 has 4 MA's), (Start: 49 @41961 has 28 MA's), (90, 41838), (109, 41751), (113, 41727), (117, 41700),

Gene: FairyPath_103 Start: 61751, Stop: 61903, Start Num: 88
Candidate Starts for FairyPath_103:
(25, 61529), (Start: 70 @61685 has 2 MA's), (Start: 79 @61706 has 95 MA's), (Start: 88 @61751 has 4 MA's), (92, 61769), (105, 61811), (112, 61865),

Gene: Farrylious_14 Start: 5709, Stop: 5921, Start Num: 61
Candidate Starts for Farrylious_14:
(Start: 61 @5709 has 11 MA's), (101, 5823), (102, 5826), (103, 5829), (106, 5838), (108, 5862), (109, 5868), (110, 5877), (113, 5892), (114, 5901), (115, 5910),

Gene: Farrylious_22 Start: 11594, Stop: 11809, Start Num: 72
Candidate Starts for Farrylious_22:
(47, 11537), (Start: 70 @11591 has 2 MA's), (Start: 72 @11594 has 7 MA's), (Start: 88 @11651 has 4 MA's), (96, 11684), (100, 11696), (101, 11699), (113, 11768),

Gene: FidgetOrca_30 Start: 25633, Stop: 25872, Start Num: 71
Candidate Starts for FidgetOrca_30:
(Start: 71 @25633 has 22 MA's), (108, 25792), (113, 25822),

Gene: FireRed_105 Start: 61677, Stop: 61874, Start Num: 79
Candidate Starts for FireRed_105:
(25, 61500), (Start: 70 @61656 has 2 MA's), (Start: 79 @61677 has 95 MA's), (Start: 88 @61722 has 4 MA's), (92, 61740), (105, 61782), (112, 61836),

Gene: FloraSnap32_183 Start: 122836, Stop: 123066, Start Num: 69
Candidate Starts for FloraSnap32_183:
(Start: 69 @122836 has 7 MA's), (113, 123013),

Gene: FlyingTortilla_12 Start: 6471, Stop: 6677, Start Num: 61
Candidate Starts for FlyingTortilla_12:
(34, 6384), (50, 6447), (Start: 61 @6471 has 11 MA's), (80, 6501), (103, 6585), (106, 6594), (108, 6618), (109, 6624), (113, 6648), (114, 6657),

Gene: Flypotenuse_98 Start: 59862, Stop: 60059, Start Num: 79
Candidate Starts for Flypotenuse_98:
(25, 59685), (Start: 70 @59841 has 2 MA's), (Start: 79 @59862 has 95 MA's), (Start: 88 @59907 has 4 MA's), (92, 59925), (105, 59967), (112, 60021),

Gene: FoghornLeghorn_95 Start: 58612, Stop: 58764, Start Num: 88
Candidate Starts for FoghornLeghorn_95:
(25, 58390), (Start: 70 @58546 has 2 MA's), (Start: 79 @58567 has 95 MA's), (Start: 88 @58612 has 4 MA's), (92, 58630), (105, 58672), (112, 58726),

Gene: FrankDeliGuy_52 Start: 41773, Stop: 41501, Start Num: 49
Candidate Starts for FrankDeliGuy_52:
(Start: 49 @41773 has 28 MA's), (94, 41629), (104, 41599), (109, 41563), (113, 41539), (117, 41512),

Gene: Fransoyer_58 Start: 44153, Stop: 43872, Start Num: 49
Candidate Starts for Fransoyer_58:
(Start: 49 @44153 has 28 MA's), (90, 44027),

Gene: FrostedClock_189 Start: 125166, Stop: 125396, Start Num: 69
Candidate Starts for FrostedClock_189:
(Start: 69 @125166 has 7 MA's), (113, 125343),

Gene: FruityLoops_11 Start: 6380, Stop: 6586, Start Num: 61
Candidate Starts for FruityLoops_11:
(34, 6293), (50, 6356), (Start: 61 @6380 has 11 MA's), (80, 6410), (103, 6494), (106, 6503), (108, 6527), (109, 6533), (113, 6557), (114, 6566),

Gene: Gage_104 Start: 60933, Stop: 61130, Start Num: 79
Candidate Starts for Gage_104:
(25, 60756), (Start: 79 @60933 has 95 MA's), (Start: 88 @60978 has 4 MA's), (92, 60996), (105, 61038), (112, 61092),

Gene: Gator_100 Start: 60718, Stop: 60915, Start Num: 79
Candidate Starts for Gator_100:
(25, 60541), (Start: 70 @60697 has 2 MA's), (Start: 79 @60718 has 95 MA's), (Start: 88 @60763 has 4 MA's), (92, 60781), (105, 60823), (112, 60877),

Gene: Gazebo_55 Start: 42275, Stop: 42003, Start Num: 49
Candidate Starts for Gazebo_55:
(Start: 48 @42281 has 4 MA's), (Start: 49 @42275 has 28 MA's), (90, 42152), (109, 42065), (113, 42041), (117, 42014),

Gene: Gemini_107 Start: 61312, Stop: 61509, Start Num: 79
Candidate Starts for Gemini_107:

(25, 61135), (Start: 70 @61291 has 2 MA's), (Start: 79 @61312 has 95 MA's), (Start: 88 @61357 has 4 MA's), (92, 61375), (105, 61417), (112, 61471),

Gene: Glexan_101 Start: 61037, Stop: 61189, Start Num: 88

Candidate Starts for Glexan_101:

(25, 60815), (Start: 70 @60971 has 2 MA's), (Start: 79 @60992 has 95 MA's), (Start: 88 @61037 has 4 MA's), (92, 61055), (105, 61097), (112, 61151),

Gene: Goku_101 Start: 61130, Stop: 61327, Start Num: 79

Candidate Starts for Goku_101:

(25, 60953), (Start: 70 @61109 has 2 MA's), (Start: 79 @61130 has 95 MA's), (Start: 88 @61175 has 4 MA's), (92, 61193), (105, 61235), (112, 61289),

Gene: GoldenEssence_174 Start: 118714, Stop: 118944, Start Num: 69

Candidate Starts for GoldenEssence_174:

(Start: 69 @118714 has 7 MA's), (113, 118891),

Gene: GoldenSpark_106 Start: 60795, Stop: 60992, Start Num: 79

Candidate Starts for GoldenSpark_106:

(25, 60618), (Start: 70 @60774 has 2 MA's), (Start: 79 @60795 has 95 MA's), (Start: 88 @60840 has 4 MA's), (92, 60858), (105, 60900), (112, 60954),

Gene: Goldilocks_105 Start: 60712, Stop: 60909, Start Num: 79

Candidate Starts for Goldilocks_105:

(25, 60535), (Start: 70 @60691 has 2 MA's), (Start: 79 @60712 has 95 MA's), (Start: 88 @60757 has 4 MA's), (92, 60775), (105, 60817), (112, 60871),

Gene: GooberAzure_105 Start: 60795, Stop: 60992, Start Num: 79

Candidate Starts for GooberAzure_105:

(25, 60618), (Start: 70 @60774 has 2 MA's), (Start: 79 @60795 has 95 MA's), (Start: 88 @60840 has 4 MA's), (92, 60858), (105, 60900), (112, 60954),

Gene: Grassboy_58 Start: 42646, Stop: 42386, Start Num: 48

Candidate Starts for Grassboy_58:

(Start: 48 @42646 has 4 MA's), (Start: 51 @42640 has 4 MA's), (54, 42631), (92, 42523), (99, 42499), (109, 42448), (113, 42424),

Gene: Gray_14 Start: 5685, Stop: 5897, Start Num: 61

Candidate Starts for Gray_14:

(Start: 61 @5685 has 11 MA's), (101, 5799), (102, 5802), (103, 5805), (106, 5814), (108, 5838), (109, 5844), (110, 5853), (113, 5868), (114, 5877), (115, 5886),

Gene: Gray_24 Start: 11841, Stop: 12056, Start Num: 72

Candidate Starts for Gray_24:

(47, 11784), (Start: 70 @11838 has 2 MA's), (Start: 72 @11841 has 7 MA's), (Start: 88 @11898 has 4 MA's), (96, 11931), (100, 11943), (101, 11946), (113, 12015),

Gene: Greep_106 Start: 62367, Stop: 62564, Start Num: 79

Candidate Starts for Greep_106:

(25, 62190), (Start: 70 @62346 has 2 MA's), (Start: 79 @62367 has 95 MA's), (Start: 88 @62412 has 4 MA's), (92, 62430), (105, 62472), (112, 62526),

Gene: Hanem_24 Start: 11841, Stop: 12056, Start Num: 72

Candidate Starts for Hanem_24:

(47, 11784), (Start: 70 @11838 has 2 MA's), (Start: 72 @11841 has 7 MA's), (Start: 88 @11898 has 4 MA's), (96, 11931), (100, 11943), (101, 11946), (113, 12015),

Gene: Hanem_14 Start: 5685, Stop: 5897, Start Num: 61

Candidate Starts for Hanem_14:

(Start: 61 @5685 has 11 MA's), (101, 5799), (102, 5802), (103, 5805), (106, 5814), (108, 5838), (109, 5844), (110, 5853), (113, 5868), (114, 5877), (115, 5886),

Gene: Harella_102 Start: 61508, Stop: 61705, Start Num: 79

Candidate Starts for Harella_102:

(25, 61331), (Start: 70 @61487 has 2 MA's), (Start: 79 @61508 has 95 MA's), (Start: 88 @61553 has 4 MA's), (92, 61571), (105, 61613), (112, 61667),

Gene: Henry_99 Start: 60835, Stop: 61032, Start Num: 79

Candidate Starts for Henry_99:

(25, 60658), (Start: 70 @60814 has 2 MA's), (Start: 79 @60835 has 95 MA's), (Start: 88 @60880 has 4 MA's), (92, 60898), (105, 60940), (112, 60994),

Gene: Holt_107 Start: 61209, Stop: 61406, Start Num: 79

Candidate Starts for Holt_107:

(25, 61032), (Start: 70 @61188 has 2 MA's), (Start: 79 @61209 has 95 MA's), (Start: 88 @61254 has 4 MA's), (92, 61272), (105, 61314), (112, 61368),

Gene: Hoonter_105 Start: 61288, Stop: 61485, Start Num: 79

Candidate Starts for Hoonter_105:

(25, 61111), (Start: 70 @61267 has 2 MA's), (Start: 79 @61288 has 95 MA's), (Start: 88 @61333 has 4 MA's), (92, 61351), (105, 61393), (112, 61447),

Gene: Hoshi_30 Start: 25627, Stop: 25866, Start Num: 71

Candidate Starts for Hoshi_30:

(Start: 71 @25627 has 22 MA's), (108, 25786), (113, 25816),

Gene: HufflyPuff_104 Start: 61903, Stop: 62100, Start Num: 79

Candidate Starts for HufflyPuff_104:

(25, 61726), (Start: 70 @61882 has 2 MA's), (Start: 79 @61903 has 95 MA's), (Start: 88 @61948 has 4 MA's), (92, 61966), (105, 62008), (112, 62062),

Gene: Hyperion_56 Start: 42456, Stop: 42184, Start Num: 49

Candidate Starts for Hyperion_56:

(Start: 48 @42459 has 4 MA's), (Start: 49 @42456 has 28 MA's), (90, 42333), (109, 42246), (113, 42222), (117, 42195),

Gene: IHOP_100 Start: 60511, Stop: 60708, Start Num: 79

Candidate Starts for IHOP_100:

(25, 60334), (Start: 70 @60490 has 2 MA's), (Start: 79 @60511 has 95 MA's), (Start: 88 @60556 has 4 MA's), (92, 60574), (105, 60616), (112, 60670),

Gene: Ibantik_60 Start: 25970, Stop: 26188, Start Num: 75

Candidate Starts for Ibantik_60:

(20, 25754), (42, 25898), (43, 25901), (52, 25931), (Start: 75 @25970 has 5 MA's), (112, 26144),

Gene: Ibrahim_1 Start: 89, Stop: 325, Start Num: 62

Candidate Starts for Ibrahim_1:

(37, 8), (46, 47), (Start: 62 @89 has 7 MA's), (Start: 64 @92 has 1 MA's), (92, 191), (93, 197), (95, 203), (112, 287),

Gene: IceWarrior_30 Start: 25627, Stop: 25866, Start Num: 71

Candidate Starts for IceWarrior_30:

(Start: 71 @25627 has 22 MA's), (108, 25786), (113, 25816),

Gene: Icee_103 Start: 60319, Stop: 60516, Start Num: 79

Candidate Starts for Icee_103:

(25, 60142), (Start: 70 @60298 has 2 MA's), (Start: 79 @60319 has 95 MA's), (Start: 88 @60364 has 4 MA's), (92, 60382), (105, 60424), (112, 60478),

Gene: Inca_99 Start: 59000, Stop: 59197, Start Num: 79

Candidate Starts for Inca_99:

(25, 58823), (Start: 70 @58979 has 2 MA's), (Start: 79 @59000 has 95 MA's), (Start: 88 @59045 has 4 MA's), (92, 59063), (105, 59105), (112, 59159),

Gene: Indigenous_30 Start: 25627, Stop: 25866, Start Num: 71

Candidate Starts for Indigenous_30:

(Start: 71 @25627 has 22 MA's), (108, 25786), (113, 25816),

Gene: JSwag_50 Start: 30801, Stop: 30553, Start Num: 58

Candidate Starts for JSwag_50:

(Start: 58 @30801 has 10 MA's), (101, 30669), (112, 30603),

Gene: Jace_19 Start: 17315, Stop: 17536, Start Num: 76

Candidate Starts for Jace_19:

(1, 16346), (2, 16361), (3, 16439), (4, 16571), (10, 16844), (14, 17003), (15, 17018), (Start: 76 @17315 has 2 MA's), (83, 17357), (92, 17390), (106, 17435), (112, 17486),

Gene: Jaylociraptor_30 Start: 25627, Stop: 25866, Start Num: 71

Candidate Starts for Jaylociraptor_30:

(Start: 71 @25627 has 22 MA's), (108, 25786), (113, 25816),

Gene: JeanGrey_137 Start: 105656, Stop: 105889, Start Num: 76

Candidate Starts for JeanGrey_137:

(Start: 76 @105656 has 2 MA's), (112, 105827),

Gene: Jehoshaphat_56 Start: 42519, Stop: 42247, Start Num: 49

Candidate Starts for Jehoshaphat_56:

(Start: 48 @42522 has 4 MA's), (Start: 49 @42519 has 28 MA's), (90, 42396), (109, 42309), (113, 42285), (117, 42258),

Gene: Jordennis_50 Start: 31033, Stop: 30803, Start Num: 59

Candidate Starts for Jordennis_50:

(30, 31141), (Start: 59 @31033 has 7 MA's), (89, 30952), (92, 30937), (106, 30892), (112, 30841),

Gene: Judebell_57 Start: 42165, Stop: 41893, Start Num: 49

Candidate Starts for Judebell_57:

(Start: 48 @42168 has 4 MA's), (Start: 49 @42165 has 28 MA's), (94, 42021), (104, 41991), (109, 41955), (113, 41931), (117, 41904),

Gene: Kabocha_14 Start: 5685, Stop: 5897, Start Num: 61

Candidate Starts for Kabocha_14:

(Start: 61 @5685 has 11 MA's), (101, 5799), (102, 5802), (103, 5805), (106, 5814), (108, 5838), (109, 5844), (110, 5853), (113, 5868), (114, 5877), (115, 5886),

Gene: Kabocha_25 Start: 12654, Stop: 12869, Start Num: 72

Candidate Starts for Kabocha_25:

(47, 12597), (Start: 70 @12651 has 2 MA's), (Start: 72 @12654 has 7 MA's), (Start: 88 @12711 has 4 MA's), (96, 12744), (100, 12756), (101, 12759), (113, 12828),

Gene: Kanye_99 Start: 61044, Stop: 61241, Start Num: 79

Candidate Starts for Kanye_99:

(25, 60867), (Start: 70 @61023 has 2 MA's), (Start: 79 @61044 has 95 MA's), (Start: 88 @61089 has 4 MA's), (92, 61107), (105, 61149), (112, 61203),

Gene: Kimchi_106 Start: 60936, Stop: 61133, Start Num: 79

Candidate Starts for Kimchi_106:

(25, 60759), (Start: 70 @60915 has 2 MA's), (Start: 79 @60936 has 95 MA's), (Start: 88 @60981 has 4 MA's), (92, 60999), (105, 61041), (112, 61095),

Gene: Kostya_102 Start: 60613, Stop: 60810, Start Num: 79

Candidate Starts for Kostya_102:

(25, 60436), (Start: 70 @60592 has 2 MA's), (Start: 79 @60613 has 95 MA's), (Start: 88 @60658 has 4 MA's), (92, 60676), (105, 60718), (112, 60772),

Gene: Krueger_4 Start: 823, Stop: 1062, Start Num: 66

Candidate Starts for Krueger_4:

(Start: 66 @823 has 8 MA's), (112, 1015),

Gene: Kudfre_102 Start: 58639, Stop: 58851, Start Num: 75

Candidate Starts for Kudfre_102:

(Start: 75 @58639 has 5 MA's), (95, 58729), (102, 58750), (112, 58813), (117, 58843),

Gene: Kyva_58 Start: 42703, Stop: 42443, Start Num: 48

Candidate Starts for Kyva_58:

(Start: 48 @42703 has 4 MA's), (Start: 51 @42697 has 4 MA's), (54, 42688), (92, 42580), (99, 42556), (109, 42505), (113, 42481),

Gene: LadyJasley_12 Start: 5128, Stop: 5349, Start Num: 69

Candidate Starts for LadyJasley_12:

(Start: 69 @5128 has 7 MA's), (96, 5230), (102, 5248), (112, 5311),

Gene: Laure_187 Start: 116319, Stop: 116528, Start Num: 69

Candidate Starts for Laure_187:

(Start: 69 @116319 has 7 MA's), (82, 116349), (109, 116472), (113, 116496),

Gene: Lenoshki_23 Start: 11467, Stop: 11682, Start Num: 72

Candidate Starts for Lenoshki_23:

(Start: 70 @11464 has 2 MA's), (Start: 72 @11467 has 7 MA's), (Start: 88 @11524 has 4 MA's), (96, 11557), (101, 11572), (113, 11641),

Gene: Lenoshki_15 Start: 5582, Stop: 5794, Start Num: 61

Candidate Starts for Lenoshki_15:

(Start: 61 @5582 has 11 MA's), (101, 5696), (102, 5699), (103, 5702), (106, 5711), (108, 5735), (109, 5741), (110, 5750), (113, 5765), (114, 5774), (115, 5783),

Gene: LilMcDreamy_72 Start: 60756, Stop: 60983, Start Num: 68

Candidate Starts for LilMcDreamy_72:

(Start: 68 @60756 has 2 MA's), (102, 60876), (115, 60963), (116, 60966),

Gene: Lilpickle_101 Start: 60438, Stop: 60635, Start Num: 79

Candidate Starts for Lilpickle_101:

(25, 60261), (Start: 70 @60417 has 2 MA's), (Start: 79 @60438 has 95 MA's), (Start: 88 @60483 has 4 MA's), (92, 60501), (105, 60543), (112, 60597),

Gene: Liveloughbron_103 Start: 62036, Stop: 62233, Start Num: 79

Candidate Starts for Liveloughbron_103:

(25, 61859), (Start: 70 @62015 has 2 MA's), (Start: 79 @62036 has 95 MA's), (Start: 88 @62081 has 4 MA's), (92, 62099), (105, 62141), (112, 62195),

Gene: Llemily_54 Start: 41295, Stop: 41023, Start Num: 49

Candidate Starts for Llemily_54:

(Start: 48 @41298 has 4 MA's), (Start: 49 @41295 has 28 MA's), (90, 41172), (109, 41085), (113, 41061), (117, 41034),

Gene: LogiBear_50 Start: 30793, Stop: 30587, Start Num: 60

Candidate Starts for LogiBear_50:

(24, 30946), (60, 30793), (86, 30742), (101, 30694), (109, 30649), (112, 30628),

Gene: LoneWolf_49 Start: 32307, Stop: 32071, Start Num: 64

Candidate Starts for LoneWolf_49:

(27, 32427), (30, 32415), (Start: 64 @32307 has 1 MA's), (101, 32184), (112, 32118),

Gene: Lonelysoil_54 Start: 41648, Stop: 41376, Start Num: 49

Candidate Starts for Lonelysoil_54:

(Start: 49 @41648 has 28 MA's), (90, 41525), (109, 41438), (113, 41414), (117, 41387),

Gene: MISSy_103 Start: 61721, Stop: 61918, Start Num: 79

Candidate Starts for MISSy_103:

(25, 61544), (35, 61598), (Start: 70 @61700 has 2 MA's), (Start: 79 @61721 has 95 MA's), (Start: 88 @61766 has 4 MA's), (92, 61784), (105, 61826), (112, 61880),

Gene: MPhalcon_103 Start: 61138, Stop: 61335, Start Num: 79

Candidate Starts for MPhalcon_103:

(25, 60961), (Start: 70 @61117 has 2 MA's), (Start: 79 @61138 has 95 MA's), (Start: 88 @61183 has 4 MA's), (92, 61201), (105, 61243), (112, 61297),

Gene: Manda_103 Start: 61175, Stop: 61372, Start Num: 79

Candidate Starts for Manda_103:

(25, 60998), (Start: 70 @61154 has 2 MA's), (Start: 79 @61175 has 95 MA's), (Start: 88 @61220 has 4 MA's), (92, 61238), (105, 61280), (112, 61334),

Gene: Marshawn_5 Start: 936, Stop: 1178, Start Num: 66

Candidate Starts for Marshawn_5:

(Start: 66 @936 has 8 MA's), (89, 1017), (112, 1128),

Gene: Marshmallow_99 Start: 61133, Stop: 61330, Start Num: 79
Candidate Starts for Marshmallow_99:
(25, 60956), (Start: 70 @61112 has 2 MA's), (Start: 79 @61133 has 95 MA's), (Start: 88 @61178 has 4 MA's), (92, 61196), (105, 61238), (112, 61292),

Gene: Mashley_55 Start: 42232, Stop: 41960, Start Num: 49
Candidate Starts for Mashley_55:
(Start: 49 @42232 has 28 MA's), (94, 42088), (104, 42058), (109, 42022), (113, 41998), (117, 41971),

Gene: Maya_30 Start: 25641, Stop: 25880, Start Num: 71
Candidate Starts for Maya_30:
(Start: 71 @25641 has 22 MA's), (108, 25800), (113, 25830),

Gene: Meibysrarus_30 Start: 25627, Stop: 25866, Start Num: 71
Candidate Starts for Meibysrarus_30:
(Start: 71 @25627 has 22 MA's), (108, 25786), (113, 25816),

Gene: Mentos_60 Start: 43466, Stop: 43194, Start Num: 49
Candidate Starts for Mentos_60:
(28, 43562), (Start: 49 @43466 has 28 MA's), (94, 43322), (104, 43292), (109, 43256), (113, 43232), (117, 43205),

Gene: MicyPS_26 Start: 28079, Stop: 28330, Start Num: 71
Candidate Starts for MicyPS_26:
(35, 27974), (36, 27977), (38, 27983), (41, 27998), (44, 28010), (55, 28049), (Start: 71 @28079 has 22 MA's), (86, 28139), (92, 28169), (101, 28199), (105, 28211), (106, 28214), (110, 28253), (113, 28268), (119, 28304),

Gene: Mikronejon_23 Start: 11838, Stop: 12056, Start Num: 70
Candidate Starts for Mikronejon_23:
(47, 11784), (Start: 70 @11838 has 2 MA's), (Start: 72 @11841 has 7 MA's), (Start: 88 @11898 has 4 MA's), (96, 11931), (100, 11943), (101, 11946), (113, 12015),

Gene: Mikronejon_14 Start: 5685, Stop: 5897, Start Num: 61
Candidate Starts for Mikronejon_14:
(Start: 61 @5685 has 11 MA's), (101, 5799), (102, 5802), (103, 5805), (106, 5814), (108, 5838), (109, 5844), (110, 5853), (113, 5868), (114, 5877), (115, 5886),

Gene: Mila11_59 Start: 43685, Stop: 43431, Start Num: 51
Candidate Starts for Mila11_59:
(Start: 48 @43691 has 4 MA's), (Start: 51 @43685 has 4 MA's), (54, 43676), (92, 43568), (99, 43544), (109, 43493), (113, 43469), (117, 43442),

Gene: Mimi_186 Start: 124218, Stop: 124448, Start Num: 69
Candidate Starts for Mimi_186:
(Start: 69 @124218 has 7 MA's), (113, 124395),

Gene: Mindy_101 Start: 60454, Stop: 60651, Start Num: 79
Candidate Starts for Mindy_101:
(25, 60277), (Start: 70 @60433 has 2 MA's), (Start: 79 @60454 has 95 MA's), (Start: 88 @60499 has 4 MA's), (92, 60517), (105, 60559), (112, 60613),

Gene: MinecraftSteve_52 Start: 31065, Stop: 30817, Start Num: 58

Candidate Starts for MinecraftSteve_52:

(Start: 58 @31065 has 10 MA's), (101, 30933), (112, 30867),

Gene: Minispark_47 Start: 31839, Stop: 31603, Start Num: 59

Candidate Starts for Minispark_47:

(18, 32040), (30, 31941), (Start: 59 @31839 has 7 MA's), (Start: 75 @31815 has 5 MA's), (112, 31647),

Gene: Miniwave_97 Start: 60631, Stop: 60828, Start Num: 79

Candidate Starts for Miniwave_97:

(25, 60454), (Start: 70 @60610 has 2 MA's), (Start: 79 @60631 has 95 MA's), (Start: 88 @60676 has 4 MA's), (92, 60694), (105, 60736), (112, 60790),

Gene: MintFritos_14 Start: 5685, Stop: 5897, Start Num: 61

Candidate Starts for MintFritos_14:

(Start: 61 @5685 has 11 MA's), (101, 5799), (102, 5802), (103, 5805), (106, 5814), (108, 5838), (109, 5844), (110, 5853), (113, 5868), (114, 5877), (115, 5886),

Gene: MintFritos_23 Start: 11841, Stop: 12056, Start Num: 72

Candidate Starts for MintFritos_23:

(47, 11784), (Start: 70 @11838 has 2 MA's), (Start: 72 @11841 has 7 MA's), (Start: 88 @11898 has 4 MA's), (96, 11931), (100, 11943), (101, 11946), (113, 12015),

Gene: Misfit_103 Start: 62234, Stop: 62431, Start Num: 79

Candidate Starts for Misfit_103:

(25, 62057), (Start: 70 @62213 has 2 MA's), (Start: 79 @62234 has 95 MA's), (Start: 88 @62279 has 4 MA's), (92, 62297), (105, 62339), (112, 62393),

Gene: ModicumRichard_94 Start: 55434, Stop: 55703, Start Num: 73

Candidate Starts for ModicumRichard_94:

(Start: 73 @55434 has 3 MA's), (104, 55554), (106, 55560), (112, 55611), (113, 55614), (121, 55659),

Gene: MollyToe_96 Start: 59077, Stop: 59229, Start Num: 88

Candidate Starts for MollyToe_96:

(25, 58855), (Start: 70 @59011 has 2 MA's), (Start: 79 @59032 has 95 MA's), (Start: 88 @59077 has 4 MA's), (92, 59095), (105, 59137), (112, 59191),

Gene: Mollymur_75 Start: 54003, Stop: 53758, Start Num: 63

Candidate Starts for Mollymur_75:

(Start: 63 @54003 has 4 MA's), (Start: 75 @53982 has 5 MA's), (112, 53808),

Gene: MorillMayhem_57 Start: 42562, Stop: 42308, Start Num: 51

Candidate Starts for MorillMayhem_57:

(Start: 48 @42568 has 4 MA's), (Start: 51 @42562 has 4 MA's), (54, 42553), (92, 42445), (99, 42421), (109, 42370), (113, 42346), (117, 42319),

Gene: Mosby_98 Start: 60598, Stop: 60795, Start Num: 79

Candidate Starts for Mosby_98:

(25, 60421), (Start: 70 @60577 has 2 MA's), (Start: 79 @60598 has 95 MA's), (Start: 88 @60643 has 4 MA's), (92, 60661), (105, 60703), (112, 60757),

Gene: Murica_105 Start: 62937, Stop: 63134, Start Num: 79

Candidate Starts for Murica_105:

(25, 62760), (35, 62814), (Start: 70 @62916 has 2 MA's), (Start: 79 @62937 has 95 MA's), (Start: 88 @62982 has 4 MA's), (92, 63000), (105, 63042), (112, 63096),

Gene: Myrale_102 Start: 61293, Stop: 61490, Start Num: 79

Candidate Starts for Myrale_102:

(25, 61116), (Start: 70 @61272 has 2 MA's), (Start: 79 @61293 has 95 MA's), (Start: 88 @61338 has 4 MA's), (92, 61356), (105, 61398), (112, 61452),

Gene: Nairb_1 Start: 89, Stop: 325, Start Num: 62

Candidate Starts for Nairb_1:

(37, 8), (46, 47), (Start: 62 @89 has 7 MA's), (Start: 64 @92 has 1 MA's), (92, 191), (93, 197), (95, 203), (112, 287),

Gene: Nala_104 Start: 61647, Stop: 61844, Start Num: 79

Candidate Starts for Nala_104:

(25, 61470), (Start: 70 @61626 has 2 MA's), (Start: 79 @61647 has 95 MA's), (Start: 88 @61692 has 4 MA's), (92, 61710), (105, 61752), (112, 61806),

Gene: Namago_56 Start: 41635, Stop: 41363, Start Num: 49

Candidate Starts for Namago_56:

(Start: 48 @41641 has 4 MA's), (Start: 49 @41635 has 28 MA's), (90, 41512), (109, 41425), (113, 41401), (117, 41374),

Gene: Namo_30 Start: 25633, Stop: 25872, Start Num: 71

Candidate Starts for Namo_30:

(Start: 71 @25633 has 22 MA's), (108, 25792), (113, 25822),

Gene: NelitzaMV_99 Start: 59641, Stop: 59838, Start Num: 79

Candidate Starts for NelitzaMV_99:

(25, 59464), (Start: 70 @59620 has 2 MA's), (Start: 79 @59641 has 95 MA's), (Start: 88 @59686 has 4 MA's), (92, 59704), (105, 59746), (112, 59800),

Gene: Nike_56 Start: 42603, Stop: 42349, Start Num: 45

Candidate Starts for Nike_56:

(26, 42684), (Start: 45 @42603 has 1 MA's), (54, 42594), (92, 42486), (99, 42462), (109, 42411), (113, 42387), (117, 42360),

Gene: Nimrod_102 Start: 61260, Stop: 61457, Start Num: 79

Candidate Starts for Nimrod_102:

(25, 61083), (Start: 70 @61239 has 2 MA's), (Start: 79 @61260 has 95 MA's), (Start: 88 @61305 has 4 MA's), (92, 61323), (105, 61365), (112, 61419),

Gene: NonchalantPear_102 Start: 59888, Stop: 60085, Start Num: 79

Candidate Starts for NonchalantPear_102:

(25, 59711), (Start: 79 @59888 has 95 MA's), (Start: 88 @59933 has 4 MA's), (92, 59951), (105, 59993), (112, 60047),

Gene: NoodlelyBoi_26 Start: 13691, Stop: 13933, Start Num: 71

Candidate Starts for NoodlelyBoi_26:

(Start: 71 @13691 has 22 MA's), (90, 13772), (109, 13859), (113, 13883),

Gene: Octobien14_100 Start: 58045, Stop: 58257, Start Num: 75

Candidate Starts for Octobien14_100:

(Start: 75 @58045 has 5 MA's), (95, 58135), (102, 58156), (112, 58219), (118, 58252),

Gene: OlympicHelado_30 Start: 25633, Stop: 25872, Start Num: 71

Candidate Starts for OlympicHelado_30:

(Start: 71 @25633 has 22 MA's), (108, 25792), (113, 25822),

Gene: Oogie_24 Start: 11493, Stop: 11708, Start Num: 72

Candidate Starts for Oogie_24:

(Start: 70 @11490 has 2 MA's), (Start: 72 @11493 has 7 MA's), (Start: 88 @11550 has 4 MA's), (96, 11583), (101, 11598), (113, 11667),

Gene: Oogie_15 Start: 5582, Stop: 5794, Start Num: 61

Candidate Starts for Oogie_15:

(Start: 61 @5582 has 11 MA's), (101, 5696), (102, 5699), (103, 5702), (106, 5711), (108, 5735), (109, 5741), (110, 5750), (113, 5765), (114, 5774), (115, 5783),

Gene: PSonyx_28 Start: 27311, Stop: 27562, Start Num: 71

Candidate Starts for PSonyx_28:

(Start: 71 @27311 has 22 MA's), (Start: 75 @27314 has 5 MA's), (86, 27371), (101, 27431), (102, 27434), (105, 27443), (106, 27446), (110, 27485), (113, 27500), (119, 27536), (120, 27539),

Gene: Pabst_50 Start: 50450, Stop: 50701, Start Num: 62

Candidate Starts for Pabst_50:

(39, 50399), (Start: 62 @50450 has 7 MA's), (Start: 67 @50459 has 1 MA's), (Start: 79 @50489 has 95 MA's), (84, 50525), (87, 50537), (90, 50555), (92, 50567), (113, 50666),

Gene: Pakusa_14 Start: 5427, Stop: 5639, Start Num: 61

Candidate Starts for Pakusa_14:

(Start: 61 @5427 has 11 MA's), (101, 5541), (102, 5544), (103, 5547), (106, 5556), (108, 5580), (109, 5586), (110, 5595), (113, 5610), (114, 5619), (115, 5628),

Gene: Pakusa_23 Start: 11583, Stop: 11798, Start Num: 72

Candidate Starts for Pakusa_23:

(47, 11526), (Start: 70 @11580 has 2 MA's), (Start: 72 @11583 has 7 MA's), (Start: 88 @11640 has 4 MA's), (96, 11673), (100, 11685), (101, 11688), (113, 11757),

Gene: Palpatine_103 Start: 61977, Stop: 62129, Start Num: 88

Candidate Starts for Palpatine_103:

(25, 61755), (Start: 70 @61911 has 2 MA's), (Start: 79 @61932 has 95 MA's), (Start: 88 @61977 has 4 MA's), (92, 61995), (105, 62037), (112, 62091),

Gene: Panchaali_179 Start: 122700, Stop: 122903, Start Num: 78

Candidate Starts for Panchaali_179:

(Start: 67 @122679 has 1 MA's), (Start: 78 @122700 has 1 MA's), (97, 122790), (113, 122871),

Gene: Paperbeatsrock_101 Start: 61309, Stop: 61506, Start Num: 79

Candidate Starts for Paperbeatsrock_101:

(25, 61132), (Start: 70 @61288 has 2 MA's), (Start: 79 @61309 has 95 MA's), (Start: 88 @61354 has 4 MA's), (92, 61372), (105, 61414), (112, 61468),

Gene: Pat3_99 Start: 59826, Stop: 60023, Start Num: 79

Candidate Starts for Pat3_99:

(25, 59649), (Start: 70 @59805 has 2 MA's), (Start: 79 @59826 has 95 MA's), (Start: 88 @59871 has 4 MA's), (92, 59889), (105, 59931), (112, 59985),

Gene: Patbob_185 Start: 125330, Stop: 125560, Start Num: 69
Candidate Starts for Patbob_185:
(Start: 69 @125330 has 7 MA's), (113, 125507),

Gene: Petra64142_106 Start: 61798, Stop: 61995, Start Num: 79
Candidate Starts for Petra64142_106:
(25, 61621), (Start: 70 @61777 has 2 MA's), (Start: 79 @61798 has 95 MA's), (Start: 88 @61843 has 4 MA's), (92, 61861), (105, 61903), (112, 61957),

Gene: Phabia_54 Start: 41710, Stop: 41438, Start Num: 49
Candidate Starts for Phabia_54:
(Start: 48 @41713 has 4 MA's), (Start: 49 @41710 has 28 MA's), (90, 41587), (109, 41500), (113, 41476), (117, 41449),

Gene: Phaja_100 Start: 60513, Stop: 60710, Start Num: 79
Candidate Starts for Phaja_100:
(25, 60336), (Start: 70 @60492 has 2 MA's), (Start: 79 @60513 has 95 MA's), (Start: 88 @60558 has 4 MA's), (92, 60576), (105, 60618), (112, 60672),

Gene: Pharaoh_43 Start: 32085, Stop: 31876, Start Num: 59
Candidate Starts for Pharaoh_43:
(30, 32193), (33, 32181), (Start: 59 @32085 has 7 MA's), (92, 32010), (102, 31977), (112, 31914),

Gene: Pharsalus_99 Start: 61008, Stop: 61205, Start Num: 79
Candidate Starts for Pharsalus_99:
(25, 60831), (Start: 70 @60987 has 2 MA's), (Start: 79 @61008 has 95 MA's), (Start: 88 @61053 has 4 MA's), (92, 61071), (105, 61113), (112, 61167),

Gene: PhatBacter_105 Start: 61677, Stop: 61874, Start Num: 79
Candidate Starts for PhatBacter_105:
(25, 61500), (Start: 70 @61656 has 2 MA's), (Start: 79 @61677 has 95 MA's), (Start: 88 @61722 has 4 MA's), (92, 61740), (105, 61782), (112, 61836),

Gene: Phaux_104 Start: 62237, Stop: 62434, Start Num: 79
Candidate Starts for Phaux_104:
(25, 62060), (Start: 70 @62216 has 2 MA's), (Start: 79 @62237 has 95 MA's), (Start: 88 @62282 has 4 MA's), (92, 62300), (105, 62342), (112, 62396),

Gene: Phinky_64 Start: 44342, Stop: 44070, Start Num: 51
Candidate Starts for Phinky_64:
(31, 44396), (Start: 49 @44345 has 28 MA's), (Start: 51 @44342 has 4 MA's), (54, 44333), (92, 44225), (99, 44201), (109, 44150), (113, 44126), (122, 44081),

Gene: Phrampa_178 Start: 126373, Stop: 126600, Start Num: 69
Candidate Starts for Phrampa_178:
(Start: 69 @126373 has 7 MA's), (113, 126550),

Gene: Phroglets_5 Start: 3497, Stop: 3736, Start Num: 53
Candidate Starts for Phroglets_5:
(Start: 53 @3497 has 1 MA's), (57, 3506), (107, 3656), (110, 3689), (113, 3704),

Gene: PigHeaded_10 Start: 4950, Stop: 5192, Start Num: 56

Candidate Starts for PigHeaded_10:

(35, 4878), (56, 4950), (105, 5100),

Gene: Policronamos_104 Start: 61941, Stop: 62138, Start Num: 79

Candidate Starts for Policronamos_104:

(25, 61764), (Start: 70 @61920 has 2 MA's), (Start: 79 @61941 has 95 MA's), (Start: 88 @61986 has 4 MA's), (92, 62004), (105, 62046), (112, 62100),

Gene: Polyphemus_52 Start: 31731, Stop: 31501, Start Num: 59

Candidate Starts for Polyphemus_52:

(30, 31839), (Start: 59 @31731 has 7 MA's), (89, 31650), (92, 31635), (106, 31590), (112, 31539),

Gene: Prudy_47 Start: 33069, Stop: 32833, Start Num: 58

Candidate Starts for Prudy_47:

(Start: 58 @33069 has 10 MA's), (106, 32931), (110, 32892), (112, 32880),

Gene: Ptowny_98 Start: 59349, Stop: 59546, Start Num: 79

Candidate Starts for Ptowny_98:

(25, 59172), (Start: 79 @59349 has 95 MA's), (Start: 88 @59394 has 4 MA's), (92, 59412), (105, 59454), (112, 59508),

Gene: Quallification_103 Start: 61723, Stop: 61920, Start Num: 79

Candidate Starts for Quallification_103:

(25, 61546), (Start: 70 @61702 has 2 MA's), (Start: 79 @61723 has 95 MA's), (Start: 88 @61768 has 4 MA's), (92, 61786), (105, 61828), (112, 61882),

Gene: Quammi_52 Start: 41410, Stop: 41138, Start Num: 49

Candidate Starts for Quammi_52:

(Start: 48 @41413 has 4 MA's), (Start: 49 @41410 has 28 MA's), (90, 41287), (109, 41200), (113, 41176), (117, 41149),

Gene: Quhwah_29 Start: 14012, Stop: 14254, Start Num: 71

Candidate Starts for Quhwah_29:

(19, 13787), (Start: 71 @14012 has 22 MA's), (106, 14150), (109, 14180), (113, 14204),

Gene: Racecar_187 Start: 125098, Stop: 125328, Start Num: 69

Candidate Starts for Racecar_187:

(Start: 69 @125098 has 7 MA's), (113, 125275),

Gene: Rahalelujah_48 Start: 31854, Stop: 31618, Start Num: 59

Candidate Starts for Rahalelujah_48:

(18, 32055), (30, 31956), (Start: 59 @31854 has 7 MA's), (Start: 75 @31830 has 5 MA's), (112, 31662),

Gene: Rakim_103 Start: 60745, Stop: 60942, Start Num: 79

Candidate Starts for Rakim_103:

(25, 60568), (Start: 70 @60724 has 2 MA's), (Start: 79 @60745 has 95 MA's), (Start: 88 @60790 has 4 MA's), (92, 60808), (105, 60850), (112, 60904),

Gene: Remus_51 Start: 30778, Stop: 30533, Start Num: 58

Candidate Starts for Remus_51:

(Start: 58 @30778 has 10 MA's), (Start: 75 @30751 has 5 MA's), (97, 30661), (112, 30583),

Gene: Rima_30 Start: 25633, Stop: 25872, Start Num: 71
Candidate Starts for Rima_30:
(Start: 71 @25633 has 22 MA's), (108, 25792), (113, 25822),

Gene: Rimmer_100 Start: 61135, Stop: 61332, Start Num: 79
Candidate Starts for Rimmer_100:
(25, 60958), (Start: 70 @61114 has 2 MA's), (Start: 79 @61135 has 95 MA's), (Start: 88 @61180 has 4 MA's), (92, 61198), (105, 61240), (112, 61294),

Gene: RonRayGun_1 Start: 89, Stop: 325, Start Num: 62
Candidate Starts for RonRayGun_1:
(37, 8), (46, 47), (Start: 62 @89 has 7 MA's), (Start: 64 @92 has 1 MA's), (92, 191), (93, 197), (95, 203), (112, 287),

Gene: Rosalind_50 Start: 30984, Stop: 30736, Start Num: 58
Candidate Starts for Rosalind_50:
(Start: 58 @30984 has 10 MA's), (101, 30852), (112, 30786),

Gene: Rowlf_52 Start: 41508, Stop: 41236, Start Num: 49
Candidate Starts for Rowlf_52:
(Start: 48 @41511 has 4 MA's), (Start: 49 @41508 has 28 MA's), (54, 41499), (90, 41403), (92, 41391), (98, 41370), (99, 41367), (109, 41316), (113, 41292), (122, 41247),

Gene: RubyRalph_60 Start: 44491, Stop: 44210, Start Num: 49
Candidate Starts for RubyRalph_60:
(Start: 49 @44491 has 28 MA's), (90, 44365),

Gene: Rudy_52 Start: 41446, Stop: 41174, Start Num: 49
Candidate Starts for Rudy_52:
(Start: 48 @41449 has 4 MA's), (Start: 49 @41446 has 28 MA's), (90, 41323), (109, 41236), (113, 41212), (117, 41185),

Gene: SallyK_57 Start: 42760, Stop: 42488, Start Num: 49
Candidate Starts for SallyK_57:
(5, 43315), (6, 43294), (7, 43264), (Start: 49 @42760 has 28 MA's), (94, 42616), (104, 42586), (109, 42550), (113, 42526), (117, 42499),

Gene: Sassay_97 Start: 59560, Stop: 59757, Start Num: 79
Candidate Starts for Sassay_97:
(25, 59383), (Start: 70 @59539 has 2 MA's), (Start: 79 @59560 has 95 MA's), (Start: 88 @59605 has 4 MA's), (92, 59623), (105, 59665), (112, 59719),

Gene: ScarletRaider_12 Start: 6498, Stop: 6704, Start Num: 61
Candidate Starts for ScarletRaider_12:
(34, 6411), (50, 6474), (Start: 61 @6498 has 11 MA's), (80, 6528), (103, 6612), (106, 6621), (108, 6645), (109, 6651), (113, 6675), (114, 6684),

Gene: Schomber_23 Start: 11591, Stop: 11806, Start Num: 72
Candidate Starts for Schomber_23:
(47, 11534), (Start: 70 @11588 has 2 MA's), (Start: 72 @11591 has 7 MA's), (Start: 88 @11648 has 4 MA's), (96, 11681), (101, 11696), (110, 11750), (113, 11765),

Gene: Schomber_14 Start: 5685, Stop: 5897, Start Num: 61

Candidate Starts for Schomber_14:

(Start: 61 @5685 has 11 MA's), (101, 5799), (102, 5802), (103, 5805), (106, 5814), (108, 5838), (109, 5844), (110, 5853), (113, 5868), (114, 5877), (115, 5886),

Gene: Sephiroth_99 Start: 58611, Stop: 58823, Start Num: 75

Candidate Starts for Sephiroth_99:

(Start: 75 @58611 has 5 MA's), (95, 58701), (96, 58704), (102, 58722), (112, 58785),

Gene: Shadow1_3 Start: 728, Stop: 967, Start Num: 66

Candidate Starts for Shadow1_3:

(Start: 66 @728 has 8 MA's), (112, 920),

Gene: ShamWow_102 Start: 61530, Stop: 61727, Start Num: 79

Candidate Starts for ShamWow_102:

(25, 61353), (Start: 70 @61509 has 2 MA's), (Start: 79 @61530 has 95 MA's), (Start: 88 @61575 has 4 MA's), (92, 61593), (105, 61635), (112, 61689),

Gene: ShereKhan_100 Start: 61969, Stop: 62166, Start Num: 79

Candidate Starts for ShereKhan_100:

(25, 61792), (Start: 70 @61948 has 2 MA's), (Start: 79 @61969 has 95 MA's), (Start: 88 @62014 has 4 MA's), (92, 62032), (105, 62074), (112, 62128),

Gene: Sillytadpoles_55 Start: 41283, Stop: 41011, Start Num: 49

Candidate Starts for Sillytadpoles_55:

(Start: 48 @41286 has 4 MA's), (Start: 49 @41283 has 28 MA's), (90, 41160), (109, 41073), (113, 41049), (117, 41022),

Gene: SirDuracell_102 Start: 60347, Stop: 60544, Start Num: 79

Candidate Starts for SirDuracell_102:

(25, 60170), (Start: 70 @60326 has 2 MA's), (Start: 79 @60347 has 95 MA's), (Start: 88 @60392 has 4 MA's), (92, 60410), (105, 60452), (112, 60506),

Gene: SlySloth_58 Start: 42152, Stop: 41880, Start Num: 49

Candidate Starts for SlySloth_58:

(Start: 48 @42155 has 4 MA's), (Start: 49 @42152 has 28 MA's), (94, 42008), (104, 41978), (109, 41942), (113, 41918),

Gene: SophKB_100 Start: 60770, Stop: 60967, Start Num: 79

Candidate Starts for SophKB_100:

(25, 60593), (Start: 70 @60749 has 2 MA's), (Start: 79 @60770 has 95 MA's), (Start: 88 @60815 has 4 MA's), (92, 60833), (105, 60875), (112, 60929),

Gene: Sotrice96_103 Start: 61234, Stop: 61431, Start Num: 79

Candidate Starts for Sotrice96_103:

(25, 61057), (Start: 70 @61213 has 2 MA's), (Start: 79 @61234 has 95 MA's), (Start: 88 @61279 has 4 MA's), (92, 61297), (105, 61339), (112, 61393),

Gene: Spectropatronm_30 Start: 25627, Stop: 25866, Start Num: 71

Candidate Starts for Spectropatronm_30:

(Start: 71 @25627 has 22 MA's), (108, 25786), (113, 25816),

Gene: SpeedDemon_770 Start: 55702, Stop: 55460, Start Num: 63

Candidate Starts for SpeedDemon_770:

(Start: 63 @55702 has 4 MA's), (Start: 75 @55681 has 5 MA's), (106, 55558), (112, 55507),

Gene: Squash_59 Start: 42626, Stop: 42354, Start Num: 51

Candidate Starts for Squash_59:

(8, 43061), (9, 43058), (11, 42956), (12, 42896), (13, 42887), (17, 42809), (22, 42770), (23, 42767), (28, 42722), (29, 42713), (Start: 48 @42632 has 4 MA's), (Start: 51 @42626 has 4 MA's), (54, 42617), (92, 42509), (99, 42485), (109, 42434), (113, 42410), (122, 42365),

Gene: Stank_104 Start: 61008, Stop: 61205, Start Num: 79

Candidate Starts for Stank_104:

(25, 60831), (Start: 70 @60987 has 2 MA's), (Start: 79 @61008 has 95 MA's), (Start: 88 @61053 has 4 MA's), (92, 61071), (105, 61113), (112, 61167),

Gene: Statler_57 Start: 42227, Stop: 41955, Start Num: 49

Candidate Starts for Statler_57:

(Start: 49 @42227 has 28 MA's), (94, 42083), (104, 42053), (109, 42017), (113, 41993),

Gene: StellaBean_101 Start: 61370, Stop: 61567, Start Num: 79

Candidate Starts for StellaBean_101:

(25, 61193), (Start: 70 @61349 has 2 MA's), (Start: 79 @61370 has 95 MA's), (Start: 88 @61415 has 4 MA's), (92, 61433), (105, 61475), (112, 61529),

Gene: Stewart25555_179 Start: 124346, Stop: 124552, Start Num: 74

Candidate Starts for Stewart25555_179:

(74, 124346), (113, 124520),

Gene: StolenFromERC_104 Start: 60933, Stop: 61130, Start Num: 79

Candidate Starts for StolenFromERC_104:

(25, 60756), (Start: 79 @60933 has 95 MA's), (Start: 88 @60978 has 4 MA's), (92, 60996), (105, 61038), (112, 61092),

Gene: StormChicken_103 Start: 61299, Stop: 61496, Start Num: 79

Candidate Starts for StormChicken_103:

(25, 61122), (Start: 70 @61278 has 2 MA's), (Start: 79 @61299 has 95 MA's), (Start: 88 @61344 has 4 MA's), (92, 61362), (105, 61404), (112, 61458),

Gene: StrawberryJamm_59 Start: 41944, Stop: 41666, Start Num: 48

Candidate Starts for StrawberryJamm_59:

(Start: 48 @41944 has 4 MA's), (Start: 49 @41938 has 28 MA's), (90, 41815), (109, 41728), (113, 41704), (117, 41677),

Gene: Strosahl_51 Start: 30778, Stop: 30533, Start Num: 58

Candidate Starts for Strosahl_51:

(Start: 58 @30778 has 10 MA's), (Start: 75 @30751 has 5 MA's), (97, 30661), (112, 30583),

Gene: Sunfish_10 Start: 3392, Stop: 3637, Start Num: 68

Candidate Starts for Sunfish_10:

(32, 3278), (Start: 64 @3386 has 1 MA's), (Start: 66 @3389 has 8 MA's), (Start: 68 @3392 has 2 MA's), (113, 3593),

Gene: Sunflower1121_3 Start: 727, Stop: 966, Start Num: 66

Candidate Starts for Sunflower1121_3:

(Start: 66 @727 has 8 MA's), (112, 919),

Gene: Switzerland_51 Start: 31164, Stop: 30916, Start Num: 58

Candidate Starts for Switzerland_51:

(Start: 58 @31164 has 10 MA's), (101, 31032), (112, 30966),

Gene: Syleon_102 Start: 58815, Stop: 59036, Start Num: 75

Candidate Starts for Syleon_102:

(Start: 75 @58815 has 5 MA's), (95, 58905), (102, 58926), (112, 58989),

Gene: Syra333_4 Start: 832, Stop: 1071, Start Num: 66

Candidate Starts for Syra333_4:

(Start: 66 @832 has 8 MA's), (112, 1024),

Gene: TBrady12_105 Start: 60448, Stop: 60645, Start Num: 79

Candidate Starts for TBrady12_105:

(25, 60271), (Start: 70 @60427 has 2 MA's), (Start: 79 @60448 has 95 MA's), (Start: 88 @60493 has 4 MA's), (92, 60511), (105, 60553), (112, 60607),

Gene: TClif_4 Start: 786, Stop: 1025, Start Num: 66

Candidate Starts for TClif_4:

(Start: 66 @786 has 8 MA's), (111, 975), (112, 978),

Gene: TaidaOne_30 Start: 26275, Stop: 26514, Start Num: 71

Candidate Starts for TaidaOne_30:

(Start: 71 @26275 has 22 MA's), (108, 26434), (113, 26464),

Gene: Talia1610_187 Start: 124515, Stop: 124745, Start Num: 69

Candidate Starts for Talia1610_187:

(Start: 69 @124515 has 7 MA's), (113, 124692),

Gene: Taotie_24 Start: 24901, Stop: 25152, Start Num: 71

Candidate Starts for Taotie_24:

(Start: 71 @24901 has 22 MA's), (86, 24961), (91, 24988), (92, 24991), (101, 25021), (102, 25024), (105, 25033), (106, 25036), (110, 25075), (113, 25090), (119, 25126), (120, 25129),

Gene: Tarkin_101 Start: 61834, Stop: 62031, Start Num: 79

Candidate Starts for Tarkin_101:

(25, 61657), (Start: 70 @61813 has 2 MA's), (Start: 79 @61834 has 95 MA's), (Start: 88 @61879 has 4 MA's), (92, 61897), (105, 61939), (112, 61993),

Gene: TeamEdward_102 Start: 61496, Stop: 61693, Start Num: 79

Candidate Starts for TeamEdward_102:

(25, 61319), (Start: 70 @61475 has 2 MA's), (Start: 79 @61496 has 95 MA's), (Start: 88 @61541 has 4 MA's), (92, 61559), (105, 61601), (112, 61655),

Gene: TeardropMSU_98 Start: 60315, Stop: 60512, Start Num: 79

Candidate Starts for TeardropMSU_98:

(25, 60138), (Start: 70 @60294 has 2 MA's), (Start: 79 @60315 has 95 MA's), (Start: 88 @60360 has 4 MA's), (92, 60378), (105, 60420), (112, 60474),

Gene: Teehee_55 Start: 42516, Stop: 42244, Start Num: 49

Candidate Starts for Teehee_55:

(Start: 48 @42519 has 4 MA's), (Start: 49 @42516 has 28 MA's), (90, 42393), (109, 42306), (113, 42282), (117, 42255),

Gene: Terminus_105 Start: 62234, Stop: 62431, Start Num: 79

Candidate Starts for Terminus_105:

(25, 62057), (Start: 70 @62213 has 2 MA's), (Start: 79 @62234 has 95 MA's), (Start: 88 @62279 has 4 MA's), (92, 62297), (105, 62339), (112, 62393),

Gene: Theresita_48 Start: 29943, Stop: 30182, Start Num: 65

Candidate Starts for Theresita_48:

(Start: 65 @29943 has 1 MA's), (77, 29967), (98, 30075), (106, 30099),

Gene: Thimble_104 Start: 60243, Stop: 60395, Start Num: 88

Candidate Starts for Thimble_104:

(25, 60021), (Start: 70 @60177 has 2 MA's), (Start: 79 @60198 has 95 MA's), (Start: 88 @60243 has 4 MA's), (92, 60261), (105, 60303), (112, 60357),

Gene: TieDye_29 Start: 25319, Stop: 25558, Start Num: 71

Candidate Starts for TieDye_29:

(Start: 71 @25319 has 22 MA's), (108, 25478), (113, 25508),

Gene: Tigress9_4 Start: 823, Stop: 1062, Start Num: 66

Candidate Starts for Tigress9_4:

(Start: 66 @823 has 8 MA's), (112, 1015),

Gene: Tissue_57 Start: 42542, Stop: 42282, Start Num: 48

Candidate Starts for Tissue_57:

(Start: 48 @42542 has 4 MA's), (Start: 51 @42536 has 4 MA's), (54, 42527), (92, 42419), (99, 42395), (109, 42344), (113, 42320),

Gene: Toaka_48 Start: 32116, Stop: 31880, Start Num: 59

Candidate Starts for Toaka_48:

(30, 32218), (Start: 59 @32116 has 7 MA's), (92, 32017), (112, 31921),

Gene: Tomaszewski_97 Start: 60772, Stop: 60969, Start Num: 79

Candidate Starts for Tomaszewski_97:

(25, 60595), (Start: 70 @60751 has 2 MA's), (Start: 79 @60772 has 95 MA's), (Start: 88 @60817 has 4 MA's), (92, 60835), (105, 60877), (112, 60931),

Gene: Toneprano_14 Start: 5685, Stop: 5897, Start Num: 61

Candidate Starts for Toneprano_14:

(Start: 61 @5685 has 11 MA's), (101, 5799), (102, 5802), (103, 5805), (106, 5814), (108, 5838), (109, 5844), (110, 5853), (113, 5868), (114, 5877), (115, 5886),

Gene: Toneprano_23 Start: 11841, Stop: 12056, Start Num: 72

Candidate Starts for Toneprano_23:

(47, 11784), (Start: 70 @11838 has 2 MA's), (Start: 72 @11841 has 7 MA's), (Start: 88 @11898 has 4 MA's), (96, 11931), (100, 11943), (101, 11946), (113, 12015),

Gene: TonyStarch_30 Start: 25633, Stop: 25872, Start Num: 71

Candidate Starts for TonyStarch_30:

(Start: 71 @25633 has 22 MA's), (108, 25792), (113, 25822),

Gene: Toto_100 Start: 61530, Stop: 61727, Start Num: 79
Candidate Starts for Toto_100:
(25, 61353), (Start: 70 @61509 has 2 MA's), (Start: 79 @61530 has 95 MA's), (Start: 88 @61575 has 4 MA's), (92, 61593), (105, 61635), (112, 61689),

Gene: Traaww1_98 Start: 60037, Stop: 60234, Start Num: 79
Candidate Starts for Traaww1_98:
(25, 59860), (Start: 70 @60016 has 2 MA's), (Start: 79 @60037 has 95 MA's), (Start: 88 @60082 has 4 MA's), (92, 60100), (105, 60142), (112, 60196),

Gene: Tuco_103 Start: 62395, Stop: 62592, Start Num: 79
Candidate Starts for Tuco_103:
(25, 62218), (Start: 70 @62374 has 2 MA's), (Start: 79 @62395 has 95 MA's), (Start: 88 @62440 has 4 MA's), (92, 62458), (105, 62500), (112, 62554),

Gene: Twin_23 Start: 11841, Stop: 12056, Start Num: 72
Candidate Starts for Twin_23:
(47, 11784), (Start: 70 @11838 has 2 MA's), (Start: 72 @11841 has 7 MA's), (Start: 88 @11898 has 4 MA's), (96, 11931), (100, 11943), (101, 11946), (113, 12015),

Gene: Twin_14 Start: 5685, Stop: 5897, Start Num: 61
Candidate Starts for Twin_14:
(Start: 61 @5685 has 11 MA's), (101, 5799), (102, 5802), (103, 5805), (106, 5814), (108, 5838), (109, 5844), (110, 5853), (113, 5868), (114, 5877), (115, 5886),

Gene: UBSmoodge_13 Start: 6871, Stop: 7077, Start Num: 61
Candidate Starts for UBSmoodge_13:
(40, 6808), (46, 6829), (Start: 61 @6871 has 11 MA's), (80, 6901), (103, 6985), (106, 6994), (108, 7018), (109, 7024), (113, 7048), (114, 7057),

Gene: Vanisoa_48 Start: 33142, Stop: 32909, Start Num: 59
Candidate Starts for Vanisoa_48:
(18, 33343), (33, 33232), (Start: 59 @33142 has 7 MA's), (92, 33043), (105, 33001), (112, 32947),

Gene: Viceroy_53 Start: 41416, Stop: 41144, Start Num: 49
Candidate Starts for Viceroy_53:
(Start: 48 @41419 has 4 MA's), (Start: 49 @41416 has 28 MA's), (90, 41293), (109, 41206), (113, 41182), (117, 41155),

Gene: Waits_51 Start: 30953, Stop: 30705, Start Num: 58
Candidate Starts for Waits_51:
(Start: 58 @30953 has 10 MA's), (101, 30821), (112, 30755),

Gene: Warrior24_52 Start: 31163, Stop: 30915, Start Num: 58
Candidate Starts for Warrior24_52:
(Start: 58 @31163 has 10 MA's), (101, 31031), (112, 30965),

Gene: Wayne3_56 Start: 42279, Stop: 42007, Start Num: 49
Candidate Starts for Wayne3_56:
(Start: 48 @42282 has 4 MA's), (Start: 49 @42279 has 28 MA's), (90, 42156), (109, 42069), (113, 42045), (117, 42018),

Gene: WheelerS25_63 Start: 43635, Stop: 43363, Start Num: 49

Candidate Starts for WheelerS25_63:

(28, 43731), (Start: 48 @43638 has 4 MA's), (Start: 49 @43635 has 28 MA's), (94, 43491), (104, 43461), (109, 43425), (113, 43401), (117, 43374),

Gene: Wheelie_54 Start: 41600, Stop: 41328, Start Num: 49

Candidate Starts for Wheelie_54:

(Start: 48 @41603 has 4 MA's), (Start: 49 @41600 has 28 MA's), (90, 41477), (109, 41390), (113, 41366), (117, 41339),

Gene: Whitty_1 Start: 89, Stop: 325, Start Num: 62

Candidate Starts for Whitty_1:

(37, 8), (46, 47), (Start: 62 @89 has 7 MA's), (Start: 64 @92 has 1 MA's), (92, 191), (93, 197), (95, 203), (112, 287),

Gene: Wigberry_30 Start: 25089, Stop: 25331, Start Num: 71

Candidate Starts for Wigberry_30:

(Start: 71 @25089 has 22 MA's), (Start: 75 @25095 has 5 MA's), (113, 25281), (115, 25299),

Gene: Wiggin_104 Start: 60438, Stop: 60635, Start Num: 79

Candidate Starts for Wiggin_104:

(25, 60261), (Start: 70 @60417 has 2 MA's), (Start: 79 @60438 has 95 MA's), (Start: 88 @60483 has 4 MA's), (92, 60501), (105, 60543), (112, 60597),

Gene: Willez_97 Start: 59560, Stop: 59757, Start Num: 79

Candidate Starts for Willez_97:

(25, 59383), (Start: 70 @59539 has 2 MA's), (Start: 79 @59560 has 95 MA's), (Start: 88 @59605 has 4 MA's), (92, 59623), (105, 59665), (112, 59719),

Gene: WorldCup_47 Start: 31848, Stop: 31612, Start Num: 59

Candidate Starts for WorldCup_47:

(18, 32049), (30, 31950), (Start: 59 @31848 has 7 MA's), (Start: 75 @31824 has 5 MA's), (112, 31656),

Gene: Xandras_101 Start: 60261, Stop: 60458, Start Num: 79

Candidate Starts for Xandras_101:

(25, 60084), (Start: 79 @60261 has 95 MA's), (Start: 88 @60306 has 4 MA's), (92, 60324), (105, 60366), (112, 60420),

Gene: Ximenita_5 Start: 995, Stop: 1234, Start Num: 66

Candidate Starts for Ximenita_5:

(Start: 66 @995 has 8 MA's), (112, 1187),

Gene: YassJohnny_99 Start: 59581, Stop: 59778, Start Num: 79

Candidate Starts for YassJohnny_99:

(25, 59404), (Start: 70 @59560 has 2 MA's), (Start: 79 @59581 has 95 MA's), (Start: 88 @59626 has 4 MA's), (92, 59644), (105, 59686), (112, 59740),

Gene: Youngblood_105 Start: 61731, Stop: 61928, Start Num: 79

Candidate Starts for Youngblood_105:

(25, 61554), (Start: 70 @61710 has 2 MA's), (Start: 79 @61731 has 95 MA's), (Start: 88 @61776 has 4 MA's), (92, 61794), (105, 61836), (112, 61890),

Gene: Zagie_56 Start: 42135, Stop: 41863, Start Num: 49

Candidate Starts for Zagie_56:

(Start: 48 @42141 has 4 MA's), (Start: 49 @42135 has 28 MA's), (90, 42012), (109, 41925), (113, 41901), (117, 41874),

Gene: ZenTime222_1 Start: 89, Stop: 325, Start Num: 62

Candidate Starts for ZenTime222_1:

(37, 8), (46, 47), (Start: 62 @89 has 7 MA's), (Start: 64 @92 has 1 MA's), (92, 191), (93, 197), (95, 203), (112, 287),

Gene: Zhafia_57 Start: 42080, Stop: 41808, Start Num: 49

Candidate Starts for Zhafia_57:

(Start: 48 @42083 has 4 MA's), (Start: 49 @42080 has 28 MA's), (90, 41957), (109, 41870), (113, 41846), (117, 41819),

Gene: xkcd_105 Start: 61915, Stop: 62112, Start Num: 79

Candidate Starts for xkcd_105:

(25, 61738), (Start: 70 @61894 has 2 MA's), (Start: 79 @61915 has 95 MA's), (Start: 88 @61960 has 4 MA's), (92, 61978), (105, 62020), (112, 62074),