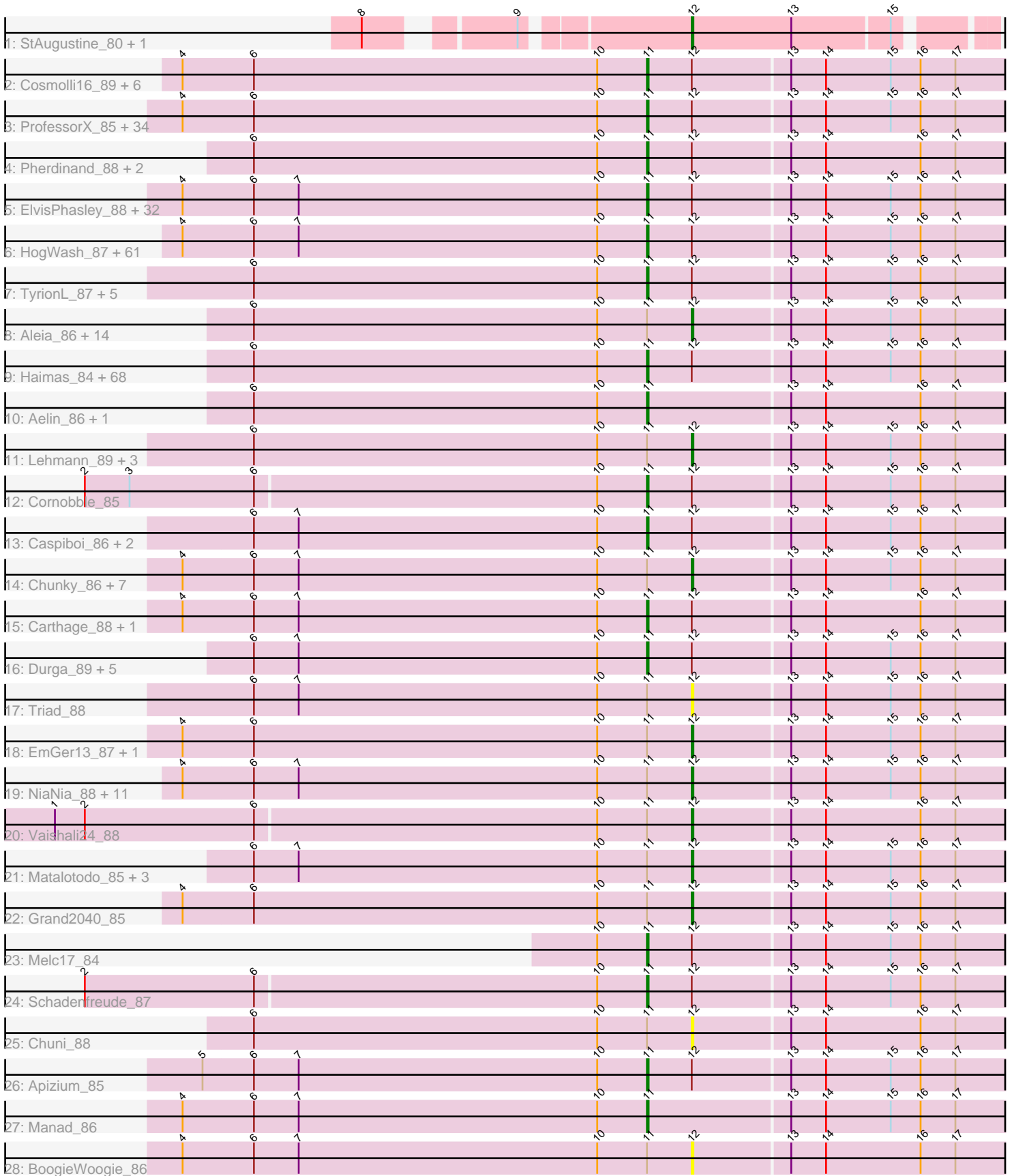


Pham 307975



Note: Tracks are now grouped by subcluster and scaled. Switching in subcluster is indicated by changes in track color. Track scale is now set by default to display the region 30 bp upstream of start 1 to 30 bp downstream of the last possible start. If this default region is judged to be packed too tightly with annotated starts, the track will be further scaled to only show that region of the ORF with annotated starts. This action will be indicated by adding "Zoomed" to the title. For starts, yellow indicates the location of called starts comprised solely of Glimmer/GeneMark auto-annotations, green indicates the location of called starts with at least 1 manual gene annotation.

Pham 307975 Report

This analysis was run 06/27/26 on database version 652.

Pham number 307975 has 285 members, 28 are drafts.

Phages represented in each track:

- Track 1 : StAugustine_80, Causa_81
- Track 2 : Cosmolli16_89, Chorkpop_88, Adriana_87, Vaticameos_84, Maru_87, Brilliant_90, Lulwa_84
- Track 3 : ProfessorX_85, IsaacEli_89, Harvey_84, Kikipoo_89, Struggle_87, Duggie_87, SDcharge11_86, AbsoluteMadLad_85, TomBombadil_87, UAch1_88, Daffy_86, Held_85, Orfeu_86, Antonia_86, Soto_84, EmpTee_86, Hetaeria_87, Hertubise_86, Burr_87, Morgushi_84, Swiphy_89, Vivaldi_87, Tooj_84, KlimbOn_86, MitKao_87, Daka_89, LeiMonet_90, Prickles_88, Jiminy_87, CampRoach_88, Xavier_86, PhatCats2014_86, Colbert_85, Riggan_88, PhatLouie_89
- Track 4 : Pherdinand_88, Lego3393_85, Yoshand_88
- Track 5 : ElvisPhasley_88, Boehler_85, Haleema_86, Bishoperium_87, Eremos_85, Gwilliam_87, Placalicious_85, Dingo_84, KingVeVeVe_85, Olak_86, Roliet_84, Bluephacebaby_86, Frankicide_85, RedMaple_86, Inverness_85, Jiraiya_88, Cher_87, Basato_86, KLucky39_85, Suffolk_83, MiniBoss_83, TooFast2Furius_86, Lasso_86, BlueHusk_88, CheetO_84, YouGoGlencoco_87, Dati_84, RedRaider89_86, Potter_82, Crownjwl_84, Nathan_87, Cobra_87, OneBrain_89
- Track 6 : HogWash_87, Virgeve_85, SilverBell_88, Zonia_87, Lumine_88, Fringe_91, Aonishiki_87, Jillium_88, Andre_89, Hocus_85, Quisquilliae_89, Toni_86, Etaye_86, Mecca_87, SirBeauregard_88, FriarPreacher_84, HenryJackson_87, JDog_86, Longacauda_88, Spartan300_86, Gwennie1_86, Selr12_88, LuckyMarjie_84, Squid_86, Orwigg_86, Gareth_87, Phareon_85, Pipsqueak_84, Legolas_88, ABU_85, DaddyDaniels_90, Phipps_85, JakeO_88, Skippy_87, DoesntMatter_84, Nacho_0089, ShadowBud_87, PhenghisKhan_87, Mosaic_84, Vortex_85, Kahve_87, FleetyMac_89, GeneCoco_87, Kimbrough_88, Gyarad_0086, Dice_86, Serendipity_86, Jesabah_89, UncleHowie_83, Hartsy_85, Serpentine_0088, PhrankReynolds_85, Roy17_84, Simielle_86, Puhltonio_83, Charles1_88, Weher20_84, Phergie_87, Chaelin_88, Numberten_86, Mesh1_88, SassyCat97_85
- Track 7 : TyrionL_87, Labeouficaum_87, Derpp_86, Kwksand96_88, CharlieGBrown_85, DuchessDung_84
- Track 8 : Aleia_86, Omniscient_88, Nova1_86, Sigman_86, Khan1_87, MelsMeow_86, FluffyNinja_88, Dione_85, Chute_87, Veritas_86, FremontTroll_85, PallasAthena_88, Coletti_90, Pops_84, Katniss_89
- Track 9 : Haimas_84, BatteryCK_85, PinheadLarry_86, Squiggle_86, Vista_86, AngelCake_86, OSmaximus_88, Oline_86, Mcshane_86, HSavage_85, Doddsville_84, JangoPhett_85, ShiVal_85, PhrodoBaggins_89, Childish_87, Wallhey_88, Inchworm_88, Surely_87, Samaymay_87, Zaider_88, Cornbread_85, Kwadwo_86, BlackStallion_86, Virapocalypse_88, Nicole21_88, Ricotta_87,

Fozzie_84, Soile_88, LemonSlice_87, Mesmerelda_86, Nyala_86, Chah_89, FugateOSU_87, Sophia_85, CamL_87, Iridoclysis_86, MRabcd_87, Scrick_86, DelRivs_85, Pacifista_86, Thora_85, PG1_85, Hamish_84, Fang_88, MichaelPhcott_85, Mulan_86, Keitherie_90, Mutante_88, Magic8_86, Swish_88, Orion_85, QueenBeane_87, Phleuron_84, Mag7_85, JacAttac_87, ThreeOh3D2_88, Oosterbaan_87, Windsor_87, Murdoc_83, LasagnaCat_88, Lopsy_83, Kloppinator_87, Telesworld_85, Kailash_85, True_85, Emiris_89, Scoot17C_87, Slatt_87, Schueller_85

- Track 10 : Aelin_86, SallyH_90
- Track 11 : Lehmann_89, Maskar_88, ImtiyazSitla_88, Ashraf_88
- Track 12 : Cornobble_85
- Track 13 : Caspiboi_86, TallGrassMM_86, Solosis_85
- Track 14 : Chunky_86, GreenChile_86, Hekos_85, Riverton_86, Zelda_87, Plata_86, Chipette_85, DolOn_91
- Track 15 : Carthage_88, Robyn_89
- Track 16 : Durga_89, Thunderbird_87, Flake_86, KingTut_78, HighStump_88, Giraffe_87
- Track 17 : Triad_88
- Track 18 : EmGer13_87, Megatron_88
- Track 19 : NiaNia_88, Taraxa_87, LeeLot_85, Waterdiva_88, Pinkman_86, MrPhizzler_90, Karn_87, LostAndPhound_86, Megamind20_87, Trypo_87, BlacksBerry_87, Happabalu_85
- Track 20 : Vaishali24_88
- Track 21 : Matalotodo_85, Buckeye_86, Larson_89, Eugenia_89
- Track 22 : Grand2040_85
- Track 23 : Melc17_84
- Track 24 : Schadenfreude_87
- Track 25 : Chuni_88
- Track 26 : Apizium_85
- Track 27 : Manad_86
- Track 28 : BoogieWoogie_86

Summary of Final Annotations (See graph section above for start numbers):

The start number called the most often in the published annotations is 11, it was called in 227 of the 257 non-draft genes in the pham.

Genes that call this "Most Annotated" start:

- ABU_85, AbsoluteMadLad_85, Adriana_87, Aelin_86, Andre_89, AngelCake_86, Antonia_86, Aonishiki_87, Apizium_85, Basato_86, BatteryCK_85, Bishoperium_87, BlackStallion_86, BlueHusk_88, Bluephacebaby_86, Boehler_85, Brilliant_90, Burr_87, CamL_87, CampRoach_88, Carthage_88, Caspiboi_86, Chaelin_88, Chah_89, Charles1_88, CharlieGBrown_85, CheetO_84, Cher_87, Childish_87, Chorkpop_88, Cobra_87, Colbert_85, Cornbread_85, Cornobble_85, Cosmolli16_89, Crownjwl_84, DaddyDaniels_90, Daffy_86, Daka_89, Dati_84, DelRivs_85, Derpp_86, Dice_86, Dingo_84, Doddsville_84, DoesntMatter_84, DuchessDung_84, Duggie_87, Durga_89, ElvisPhasley_88, Emiris_89, EmpTee_86, Eremos_85, Etaye_86, Fang_88, Flake_86, FleetyMac_89, Fozzie_84, Frankicide_85, FriarPreacher_84, Fringe_91, FugateOSU_87, Gareth_87, GeneCoco_87, Giraffe_87, Gwennie1_86, Gwilliam_87, Gyarad_0086, HSavage_85, Haimas_84,

Haleema_86, Hamish_84, Hartsy_85, Harvey_84, Held_85, HenryJackson_87, Hertubise_86, Hetaeria_87, HighStump_88, Hocus_85, HogWash_87, Inchworm_88, Inverness_85, Iridoclysis_86, IsaacEli_89, JDog_86, JacAttac_87, JakeO_88, JangoPhett_85, Jesabah_89, Jillium_88, Jiminy_87, Jiraiya_88, KLucky39_85, Kahve_87, Kailash_85, Keitherie_90, Kikipoo_89, Kimbrough_88, KingTut_78, KingVeVeVe_85, KlimbOn_86, Kloppinator_87, Kwadwo_86, Kwksand96_88, Labeouficaum_87, LasagnaCat_88, Lasso_86, Lego3393_85, Legolas_88, LeiMonet_90, LemonSlice_87, Longacauda_88, Lopsy_83, LuckyMarjie_84, Lulwa_84, Lumine_88, MRabcd_87, Mag7_85, Magic8_86, Manad_86, Maru_87, Mcshane_86, Mecca_87, Melc17_84, Mesh1_88, Mesmerelda_86, MichaelPhcott_85, MiniBoss_83, MitKao_87, Morgushi_84, Mosaic_84, Mulan_86, Murdoc_83, Mutante_88, Nacho_0089, Nathan_87, Nicole21_88, Numberten_86, Nyala_86, OSmaximus_88, Olak_86, Oline_86, OneBrain_89, Oosterbaan_87, Orfeu_86, Orion_85, Orwigg_86, PG1_85, Pacifista_86, Phareon_85, PhatCats2014_86, PhatLouie_89, PhenghisKhan_87, Pherdinand_88, Phergie_87, Phipps_85, Phleuron_84, PhrankReynolds_85, PhrodoBaggins_89, PinheadLarry_86, Pipsqueak_84, Placalicious_85, Potter_82, Prickles_88, ProfessorX_85, Puhltonio_83, QueenBeane_87, Quisquiliae_89, RedMaple_86, RedRaider89_86, Ricotta_87, Riggan_88, Robyn_89, Roliet_84, Roy17_84, SDcharge11_86, SallyH_90, Samaymay_87, SassyCat97_85, Schadenfreude_87, Schueller_85, Scoot17C_87, Scrick_86, Selr12_88, Serendipity_86, Serpentine_0088, ShadowBud_87, ShiVal_85, SilverBell_88, Simielle_86, SirBeauregard_88, Skippy_87, Slatt_87, Soile_88, Solosis_85, Sophia_85, Soto_84, Spartan300_86, Squid_86, Squiggle_86, Struggle_87, Suffolk_83, Surely_87, Swiphy_89, Swish_88, TallGrassMM_86, Telesworld_85, Thora_85, ThreeOh3D2_88, Thunderbird_87, TomBombadil_87, Toni_86, TooFast2Furius_86, Tooj_84, True_85, TyrionL_87, UAch1_88, UncleHowie_83, Vaticameos_84, Virapocalypse_88, Virgeve_85, Vista_86, Vivaldi_87, Vortex_85, Wallhey_88, Weher20_84, Windsor_87, Xavier_86, Yoshand_88, YouGoGlencoco_87, Zaider_88, Zonia_87,

Genes that have the "Most Annotated" start but do not call it:

- Aleia_86, Ashraf_88, BlacksBerry_87, BoogieWoogie_86, Buckeye_86, Chipette_85, Chuni_88, Chunky_86, Chute_87, Coletti_90, Dione_85, DolOn_91, EmGer13_87, Eugenia_89, FluffyNinja_88, FremontTroll_85, Grand2040_85, GreenChile_86, Happabalu_85, Hekos_85, ImtiyazSitla_88, Karn_87, Katniss_89, Khan1_87, Larson_89, LeeLot_85, Lehmann_89, LostAndPhound_86, Maskar_88, Matalotodo_85, Megamind20_87, Megatron_88, MelsMeow_86, MrPhizzler_90, NiaNia_88, Nova1_86, Omniscient_88, PallasAthena_88, Pinkman_86, Plata_86, Pops_84, Riverton_86, Sigman_86, Taraxa_87, Triad_88, Trypo_87, Vaishali24_88, Veritas_86, Waterdiva_88, Zelda_87,

Genes that do not have the "Most Annotated" start:

- Causa_81, StAugustine_80,

Summary by start number:

Start 11:

- Found in 283 of 285 (99.3%) of genes in pham
- Manual Annotations of this start: 227 of 257
- Called 82.3% of time when present
- Phage (with cluster) where this start called: ABU_85 (B1), AbsoluteMadLad_85 (B1), Adriana_87 (B1), Aelin_86 (B1), Andre_89 (B1), AngelCake_86 (B1), Antonia_86 (B1), Aonishiki_87 (B1), Apizium_85 (B1), Basato_86 (B1), BatteryCK_85 (B1),

Bishoperium_87 (B1), BlackStallion_86 (B1), BlueHusk_88 (B1), Bluephacebaby_86 (B1), Boehler_85 (B1), Brilliant_90 (B1), Burr_87 (B1), CamL_87 (B1), CampRoach_88 (B1), Carthage_88 (B1), Caspiboi_86 (B1), Chaelin_88 (B1), Chah_89 (B1), Charles1_88 (B1), CharlieGBrown_85 (B1), CheetO_84 (B1), Cher_87 (B1), Childish_87 (B1), Chorkpop_88 (B1), Cobra_87 (B1), Colbert_85 (B1), Cornbread_85 (B1), Cornobble_85 (B1), Cosmolli16_89 (B1), Crownjwl_84 (B1), DaddyDaniels_90 (B1), Daffy_86 (B1), Daka_89 (B1), Dati_84 (B1), DelRivs_85 (B1), Derpp_86 (B1), Dice_86 (B1), Dingo_84 (B1), Doddsville_84 (B1), DoesntMatter_84 (B1), DuchessDung_84 (B1), Duggie_87 (B1), Durga_89 (B1), ElvisPhasley_88 (B1), Emiris_89 (B1), EmpTee_86 (B1), Eremos_85 (B1), Etaye_86 (B1), Fang_88 (B1), Flake_86 (B1), FleetyMac_89 (B1), Fozzie_84 (B1), Frankicide_85 (B1), FriarPreacher_84 (B1), Fringe_91 (B1), FugateOSU_87 (B1), Gareth_87 (B1), GeneCoco_87 (B1), Giraffe_87 (B1), Gwennie1_86 (B1), Gwilliam_87 (B1), Gyarad_0086 (B1), HSavage_85 (B1), Haimas_84 (B1), Haleema_86 (B1), Hamish_84 (B1), Hartsy_85 (B1), Harvey_84 (B1), Held_85 (B1), HenryJackson_87 (B1), Hertubise_86 (B1), Hetaeria_87 (B1), HighStump_88 (B1), Hocus_85 (B1), HogWash_87 (B1), Inchworm_88 (B1), Inverness_85 (B1), Iridoclysis_86 (B1), IsaacEli_89 (B1), JDog_86 (B1), JacAttac_87 (B1), JakeO_88 (B1), JangoPhett_85 (B1), Jesabah_89 (B1), Jillium_88 (B1), Jiminy_87 (B1), Jiraiya_88 (B1), KLucky39_85 (B1), Kahve_87 (B1), Kailash_85 (B1), Keitherie_90 (B1), Kikipoo_89 (B1), Kimbrough_88 (B1), KingTut_78 (B1), KingVeVeVe_85 (B1), KlimbOn_86 (B1), Kloppinator_87 (B1), Kwadwo_86 (B1), Kwksand96_88 (B1), Labeouficaum_87 (B1), LasagnaCat_88 (B1), Lasso_86 (B1), Lego3393_85 (B1), Legolas_88 (B1), LeiMonet_90 (B1), LemonSlice_87 (B1), Longacauda_88 (B1), Lopsy_83 (B1), LuckyMarjie_84 (B1), Lulwa_84 (B1), Lumine_88 (B1), MRabcd_87 (B1), Mag7_85 (B1), Magic8_86 (B1), Manad_86 (B1), Maru_87 (B1), Mcshane_86 (B1), Mecca_87 (B1), Melc17_84 (B1), Mesh1_88 (B1), Mesmerelda_86 (B1), MichaelPhcott_85 (B1), MiniBoss_83 (B1), MitKao_87 (B1), Morgushi_84 (B1), Mosaic_84 (B1), Mulan_86 (B1), Murdoc_83 (B1), Mutante_88 (B1), Nacho_0089 (B1), Nathan_87 (B1), Nicole21_88 (B1), Numberten_86 (B1), Nyala_86 (B1), OSmaximus_88 (B1), Olak_86 (B1), Oline_86 (B1), OneBrain_89 (B1), Oosterbaan_87 (B1), Orfeu_86 (B1), Orion_85 (B1), Orwigg_86 (B1), PG1_85 (B1), Pacifista_86 (B1), Phareon_85 (B1), PhatCats2014_86 (B1), PhatLouie_89 (B1), PhenghisKhan_87 (B1), Pherdinand_88 (B1), Phergie_87 (B1), Phipps_85 (B1), Phleuron_84 (B1), PhrankReynolds_85 (B1), PhrodoBaggins_89 (B1), PinheadLarry_86 (B1), Pipsqueak_84 (B1), Placalicious_85 (B1), Potter_82 (B1), Prickles_88 (B1), ProfessorX_85 (B1), Puhltonio_83 (B1), QueenBeane_87 (B1), Quisquiliae_89 (B1), RedMaple_86 (B1), RedRaider89_86 (B1), Ricotta_87 (B1), Riggan_88 (B1), Robyn_89 (B1), Roliet_84 (B1), Roy17_84 (B1), SDcharge11_86 (B1), SallyH_90 (B1), Samaymay_87 (B1), SassyCat97_85 (B1), Schadenfreude_87 (B1), Schueller_85 (B1), Scoot17C_87 (B1), Scrick_86 (B1), Selr12_88 (B1), Serendipity_86 (B1), Serpentine_0088 (B1), ShadowBud_87 (B1), ShiVal_85 (B1), SilverBell_88 (B1), Simielle_86 (B1), SirBeauregard_88 (B1), Skippy_87 (B1), Slatt_87 (B1), Soile_88 (B1), Solosis_85 (B1), Sophia_85 (B1), Soto_84 (B1), Spartan300_86 (B1), Squid_86 (B1), Squiggle_86 (B1), Struggle_87 (B1), Suffolk_83 (B1), Surely_87 (B1), Swiphy_89 (B1), Swish_88 (B1), TallGrassMM_86 (B1), Telesworld_85 (B1), Thora_85 (B1), ThreeOh3D2_88 (B1), Thunderbird_87 (B1), TomBombadil_87 (B1), Toni_86 (B1), TooFast2Furius_86 (B1), Tooj_84 (B1), True_85 (B1), TyrionL_87 (B1), UAch1_88 (B1), UncleHowie_83 (B1), Vaticameos_84 (B1), Virapocalypse_88 (B1), Virgeve_85 (B1), Vista_86 (B1), Vivaldi_87 (B1), Vortex_85 (B1), Wallhey_88 (B1), Weher20_84 (B1), Windsor_87 (B1), Xavier_86 (B1), Yoshand_88 (B1), YouGoGlencoco_87 (B1), Zaider_88 (B1), Zonia_87 (B1),

Start 12:

- Found in 282 of 285 (98.9%) of genes in pham
- Manual Annotations of this start: 30 of 257
- Called 18.4% of time when present
- Phage (with cluster) where this start called: Aleia_86 (B1), Ashraf_88 (B1), BlacksBerry_87 (B1), BoogieWoogie_86 (B1), Buckeye_86 (B1), Causa_81 (A1), Chipette_85 (B1), Chuni_88 (B1), Chunky_86 (B1), Chute_87 (B1), Coletti_90 (B1), Dione_85 (B1), DolOn_91 (B1), EmGer13_87 (B1), Eugenia_89 (B1), FluffyNinja_88 (B1), FremontTroll_85 (B1), Grand2040_85 (B1), GreenChile_86 (B1), Happabalu_85 (B1), Hekos_85 (B1), ImtiyazSitla_88 (B1), Karn_87 (B1), Katniss_89 (B1), Khan1_87 (B1), Larson_89 (B1), LeeLot_85 (B1), Lehmann_89 (B1), LostAndPhound_86 (B1), Maskar_88 (B1), Matalotodo_85 (B1), Megamind20_87 (B1), Megatron_88 (B1), MelsMeow_86 (B1), MrPhizzler_90 (B1), NiaNia_88 (B1), Nova1_86 (B1), Omniscient_88 (B1), PallasAthena_88 (B1), Pinkman_86 (B1), Plata_86 (B1), Pops_84 (B1), Riverton_86 (B1), Sigman_86 (B1), StAugustine_80 (A1), Taraxa_87 (B1), Triad_88 (B1), Trypo_87 (B1), Vaishali24_88 (B1), Veritas_86 (B1), Waterdiva_88 (B1), Zelda_87 (B1),

Summary by clusters:

There are 2 clusters represented in this pham: A1, B1,

Info for manual annotations of cluster A1:

- Start number 12 was manually annotated 2 times for cluster A1.

Info for manual annotations of cluster B1:

- Start number 11 was manually annotated 227 times for cluster B1.
- Start number 12 was manually annotated 28 times for cluster B1.

Gene Information:

Gene: ABU_85 Start: 63937, Stop: 63677, Start Num: 11

Candidate Starts for ABU_85:

(4, 64216), (6, 64174), (7, 64147), (10, 63967), (Start: 11 @63937 has 227 MA's), (Start: 12 @63910 has 30 MA's), (13, 63853), (14, 63832), (15, 63793), (16, 63775), (17, 63754),

Gene: AbsoluteMadLad_85 Start: 63890, Stop: 63630, Start Num: 11

Candidate Starts for AbsoluteMadLad_85:

(4, 64169), (6, 64127), (10, 63920), (Start: 11 @63890 has 227 MA's), (Start: 12 @63863 has 30 MA's), (13, 63806), (14, 63785), (15, 63746), (16, 63728), (17, 63707),

Gene: Adriana_87 Start: 64452, Stop: 64192, Start Num: 11

Candidate Starts for Adriana_87:

(4, 64731), (6, 64689), (10, 64482), (Start: 11 @64452 has 227 MA's), (Start: 12 @64425 has 30 MA's), (13, 64368), (14, 64347), (15, 64308), (16, 64290), (17, 64269),

Gene: Aelin_86 Start: 63394, Stop: 63134, Start Num: 11

Candidate Starts for Aelin_86:

(6, 63631), (10, 63424), (Start: 11 @63394 has 227 MA's), (13, 63310), (14, 63289), (16, 63232), (17, 63211),

Gene: Aleia_86 Start: 63553, Stop: 63320, Start Num: 12
Candidate Starts for Aleia_86:
(6, 63817), (10, 63610), (Start: 11 @63580 has 227 MA's), (Start: 12 @63553 has 30 MA's), (13, 63496), (14, 63475), (15, 63436), (16, 63418), (17, 63397),

Gene: Andre_89 Start: 63835, Stop: 63575, Start Num: 11
Candidate Starts for Andre_89:
(4, 64114), (6, 64072), (7, 64045), (10, 63865), (Start: 11 @63835 has 227 MA's), (Start: 12 @63808 has 30 MA's), (13, 63751), (14, 63730), (15, 63691), (16, 63673), (17, 63652),

Gene: AngelCake_86 Start: 63562, Stop: 63302, Start Num: 11
Candidate Starts for AngelCake_86:
(6, 63799), (10, 63592), (Start: 11 @63562 has 227 MA's), (Start: 12 @63535 has 30 MA's), (13, 63478), (14, 63457), (15, 63418), (16, 63400), (17, 63379),

Gene: Antonia_86 Start: 63439, Stop: 63179, Start Num: 11
Candidate Starts for Antonia_86:
(4, 63718), (6, 63676), (10, 63469), (Start: 11 @63439 has 227 MA's), (Start: 12 @63412 has 30 MA's), (13, 63355), (14, 63334), (15, 63295), (16, 63277), (17, 63256),

Gene: Aonishiki_87 Start: 63748, Stop: 63488, Start Num: 11
Candidate Starts for Aonishiki_87:
(4, 64027), (6, 63985), (7, 63958), (10, 63778), (Start: 11 @63748 has 227 MA's), (Start: 12 @63721 has 30 MA's), (13, 63664), (14, 63643), (15, 63604), (16, 63586), (17, 63565),

Gene: Apizium_85 Start: 63094, Stop: 62834, Start Num: 11
Candidate Starts for Apizium_85:
(5, 63361), (6, 63331), (7, 63304), (10, 63124), (Start: 11 @63094 has 227 MA's), (Start: 12 @63067 has 30 MA's), (13, 63010), (14, 62989), (15, 62950), (16, 62932), (17, 62911),

Gene: Ashraf_88 Start: 63899, Stop: 63666, Start Num: 12
Candidate Starts for Ashraf_88:
(6, 64163), (10, 63956), (Start: 11 @63926 has 227 MA's), (Start: 12 @63899 has 30 MA's), (13, 63842), (14, 63821), (15, 63782), (16, 63764), (17, 63743),

Gene: Basato_86 Start: 63848, Stop: 63588, Start Num: 11
Candidate Starts for Basato_86:
(4, 64127), (6, 64085), (7, 64058), (10, 63878), (Start: 11 @63848 has 227 MA's), (Start: 12 @63821 has 30 MA's), (13, 63764), (14, 63743), (15, 63704), (16, 63686), (17, 63665),

Gene: BatteryCK_85 Start: 63374, Stop: 63114, Start Num: 11
Candidate Starts for BatteryCK_85:
(6, 63611), (10, 63404), (Start: 11 @63374 has 227 MA's), (Start: 12 @63347 has 30 MA's), (13, 63290), (14, 63269), (15, 63230), (16, 63212), (17, 63191),

Gene: Bishoperium_87 Start: 63952, Stop: 63692, Start Num: 11
Candidate Starts for Bishoperium_87:
(4, 64231), (6, 64189), (7, 64162), (10, 63982), (Start: 11 @63952 has 227 MA's), (Start: 12 @63925 has 30 MA's), (13, 63868), (14, 63847), (15, 63808), (16, 63790), (17, 63769),

Gene: BlackStallion_86 Start: 63802, Stop: 63542, Start Num: 11
Candidate Starts for BlackStallion_86:

(6, 64039), (10, 63832), (Start: 11 @63802 has 227 MA's), (Start: 12 @63775 has 30 MA's), (13, 63718), (14, 63697), (15, 63658), (16, 63640), (17, 63619),

Gene: BlacksBerry_87 Start: 63300, Stop: 63067, Start Num: 12

Candidate Starts for BlacksBerry_87:

(4, 63606), (6, 63564), (7, 63537), (10, 63357), (Start: 11 @63327 has 227 MA's), (Start: 12 @63300 has 30 MA's), (13, 63243), (14, 63222), (15, 63183), (16, 63165), (17, 63144),

Gene: BlueHusk_88 Start: 63626, Stop: 63366, Start Num: 11

Candidate Starts for BlueHusk_88:

(4, 63905), (6, 63863), (7, 63836), (10, 63656), (Start: 11 @63626 has 227 MA's), (Start: 12 @63599 has 30 MA's), (13, 63542), (14, 63521), (15, 63482), (16, 63464), (17, 63443),

Gene: Bluephacebaby_86 Start: 63986, Stop: 63726, Start Num: 11

Candidate Starts for Bluephacebaby_86:

(4, 64265), (6, 64223), (7, 64196), (10, 64016), (Start: 11 @63986 has 227 MA's), (Start: 12 @63959 has 30 MA's), (13, 63902), (14, 63881), (15, 63842), (16, 63824), (17, 63803),

Gene: Boehler_85 Start: 63777, Stop: 63517, Start Num: 11

Candidate Starts for Boehler_85:

(4, 64056), (6, 64014), (7, 63987), (10, 63807), (Start: 11 @63777 has 227 MA's), (Start: 12 @63750 has 30 MA's), (13, 63693), (14, 63672), (15, 63633), (16, 63615), (17, 63594),

Gene: BoogieWoogie_86 Start: 63371, Stop: 63138, Start Num: 12

Candidate Starts for BoogieWoogie_86:

(4, 63677), (6, 63635), (7, 63608), (10, 63428), (Start: 11 @63398 has 227 MA's), (Start: 12 @63371 has 30 MA's), (13, 63314), (14, 63293), (16, 63236), (17, 63215),

Gene: Brilliant_90 Start: 63966, Stop: 63706, Start Num: 11

Candidate Starts for Brilliant_90:

(4, 64245), (6, 64203), (10, 63996), (Start: 11 @63966 has 227 MA's), (Start: 12 @63939 has 30 MA's), (13, 63882), (14, 63861), (15, 63822), (16, 63804), (17, 63783),

Gene: Buckeye_86 Start: 64477, Stop: 64244, Start Num: 12

Candidate Starts for Buckeye_86:

(6, 64741), (7, 64714), (10, 64534), (Start: 11 @64504 has 227 MA's), (Start: 12 @64477 has 30 MA's), (13, 64420), (14, 64399), (15, 64360), (16, 64342), (17, 64321),

Gene: Burr_87 Start: 63438, Stop: 63178, Start Num: 11

Candidate Starts for Burr_87:

(4, 63717), (6, 63675), (10, 63468), (Start: 11 @63438 has 227 MA's), (Start: 12 @63411 has 30 MA's), (13, 63354), (14, 63333), (15, 63294), (16, 63276), (17, 63255),

Gene: CamL_87 Start: 63737, Stop: 63477, Start Num: 11

Candidate Starts for CamL_87:

(6, 63974), (10, 63767), (Start: 11 @63737 has 227 MA's), (Start: 12 @63710 has 30 MA's), (13, 63653), (14, 63632), (15, 63593), (16, 63575), (17, 63554),

Gene: CampRoach_88 Start: 63834, Stop: 63574, Start Num: 11

Candidate Starts for CampRoach_88:

(4, 64113), (6, 64071), (10, 63864), (Start: 11 @63834 has 227 MA's), (Start: 12 @63807 has 30 MA's), (13, 63750), (14, 63729), (15, 63690), (16, 63672), (17, 63651),

Gene: Carthage_88 Start: 63508, Stop: 63248, Start Num: 11

Candidate Starts for Carthage_88:

(4, 63787), (6, 63745), (7, 63718), (10, 63538), (Start: 11 @63508 has 227 MA's), (Start: 12 @63481 has 30 MA's), (13, 63424), (14, 63403), (16, 63346), (17, 63325),

Gene: Caspiboi_86 Start: 63673, Stop: 63413, Start Num: 11

Candidate Starts for Caspiboi_86:

(6, 63910), (7, 63883), (10, 63703), (Start: 11 @63673 has 227 MA's), (Start: 12 @63646 has 30 MA's), (13, 63589), (14, 63568), (15, 63529), (16, 63511), (17, 63490),

Gene: Causa_81 Start: 61986, Stop: 61777, Start Num: 12

Candidate Starts for Causa_81:

(8, 62148), (9, 62076), (Start: 12 @61986 has 30 MA's), (13, 61926), (15, 61869),

Gene: Chaelin_88 Start: 63968, Stop: 63708, Start Num: 11

Candidate Starts for Chaelin_88:

(4, 64247), (6, 64205), (7, 64178), (10, 63998), (Start: 11 @63968 has 227 MA's), (Start: 12 @63941 has 30 MA's), (13, 63884), (14, 63863), (15, 63824), (16, 63806), (17, 63785),

Gene: Chah_89 Start: 63537, Stop: 63277, Start Num: 11

Candidate Starts for Chah_89:

(6, 63774), (10, 63567), (Start: 11 @63537 has 227 MA's), (Start: 12 @63510 has 30 MA's), (13, 63453), (14, 63432), (15, 63393), (16, 63375), (17, 63354),

Gene: Charles1_88 Start: 63746, Stop: 63486, Start Num: 11

Candidate Starts for Charles1_88:

(4, 64025), (6, 63983), (7, 63956), (10, 63776), (Start: 11 @63746 has 227 MA's), (Start: 12 @63719 has 30 MA's), (13, 63662), (14, 63641), (15, 63602), (16, 63584), (17, 63563),

Gene: CharlieGBrown_85 Start: 63469, Stop: 63209, Start Num: 11

Candidate Starts for CharlieGBrown_85:

(6, 63706), (10, 63499), (Start: 11 @63469 has 227 MA's), (Start: 12 @63442 has 30 MA's), (13, 63385), (14, 63364), (15, 63325), (16, 63307), (17, 63286),

Gene: CheetO_84 Start: 63843, Stop: 63583, Start Num: 11

Candidate Starts for CheetO_84:

(4, 64122), (6, 64080), (7, 64053), (10, 63873), (Start: 11 @63843 has 227 MA's), (Start: 12 @63816 has 30 MA's), (13, 63759), (14, 63738), (15, 63699), (16, 63681), (17, 63660),

Gene: Cher_87 Start: 63940, Stop: 63680, Start Num: 11

Candidate Starts for Cher_87:

(4, 64219), (6, 64177), (7, 64150), (10, 63970), (Start: 11 @63940 has 227 MA's), (Start: 12 @63913 has 30 MA's), (13, 63856), (14, 63835), (15, 63796), (16, 63778), (17, 63757),

Gene: Childish_87 Start: 64131, Stop: 63871, Start Num: 11

Candidate Starts for Childish_87:

(6, 64368), (10, 64161), (Start: 11 @64131 has 227 MA's), (Start: 12 @64104 has 30 MA's), (13, 64047), (14, 64026), (15, 63987), (16, 63969), (17, 63948),

Gene: Chipette_85 Start: 63641, Stop: 63408, Start Num: 12

Candidate Starts for Chipette_85:

(4, 63947), (6, 63905), (7, 63878), (10, 63698), (Start: 11 @63668 has 227 MA's), (Start: 12 @63641 has 30 MA's), (13, 63584), (14, 63563), (15, 63524), (16, 63506), (17, 63485),

Gene: Chorkpop_88 Start: 63594, Stop: 63334, Start Num: 11

Candidate Starts for Chorkpop_88:

(4, 63873), (6, 63831), (10, 63624), (Start: 11 @63594 has 227 MA's), (Start: 12 @63567 has 30 MA's), (13, 63510), (14, 63489), (15, 63450), (16, 63432), (17, 63411),

Gene: Chuni_88 Start: 64152, Stop: 63919, Start Num: 12

Candidate Starts for Chuni_88:

(6, 64416), (10, 64209), (Start: 11 @64179 has 227 MA's), (Start: 12 @64152 has 30 MA's), (13, 64095), (14, 64074), (16, 64017), (17, 63996),

Gene: Chunky_86 Start: 63412, Stop: 63179, Start Num: 12

Candidate Starts for Chunky_86:

(4, 63718), (6, 63676), (7, 63649), (10, 63469), (Start: 11 @63439 has 227 MA's), (Start: 12 @63412 has 30 MA's), (13, 63355), (14, 63334), (15, 63295), (16, 63277), (17, 63256),

Gene: Chute_87 Start: 64105, Stop: 63872, Start Num: 12

Candidate Starts for Chute_87:

(6, 64369), (10, 64162), (Start: 11 @64132 has 227 MA's), (Start: 12 @64105 has 30 MA's), (13, 64048), (14, 64027), (15, 63988), (16, 63970), (17, 63949),

Gene: Cobra_87 Start: 63963, Stop: 63703, Start Num: 11

Candidate Starts for Cobra_87:

(4, 64242), (6, 64200), (7, 64173), (10, 63993), (Start: 11 @63963 has 227 MA's), (Start: 12 @63936 has 30 MA's), (13, 63879), (14, 63858), (15, 63819), (16, 63801), (17, 63780),

Gene: Colbert_85 Start: 62861, Stop: 62601, Start Num: 11

Candidate Starts for Colbert_85:

(4, 63140), (6, 63098), (10, 62891), (Start: 11 @62861 has 227 MA's), (Start: 12 @62834 has 30 MA's), (13, 62777), (14, 62756), (15, 62717), (16, 62699), (17, 62678),

Gene: Coletti_90 Start: 64461, Stop: 64228, Start Num: 12

Candidate Starts for Coletti_90:

(6, 64725), (10, 64518), (Start: 11 @64488 has 227 MA's), (Start: 12 @64461 has 30 MA's), (13, 64404), (14, 64383), (15, 64344), (16, 64326), (17, 64305),

Gene: Cornbread_85 Start: 63621, Stop: 63361, Start Num: 11

Candidate Starts for Cornbread_85:

(6, 63858), (10, 63651), (Start: 11 @63621 has 227 MA's), (Start: 12 @63594 has 30 MA's), (13, 63537), (14, 63516), (15, 63477), (16, 63459), (17, 63438),

Gene: Cornobble_85 Start: 63431, Stop: 63171, Start Num: 11

Candidate Starts for Cornobble_85:

(2, 63767), (3, 63740), (6, 63665), (10, 63461), (Start: 11 @63431 has 227 MA's), (Start: 12 @63404 has 30 MA's), (13, 63347), (14, 63326), (15, 63287), (16, 63269), (17, 63248),

Gene: Cosmolli16_89 Start: 64309, Stop: 64049, Start Num: 11

Candidate Starts for Cosmolli16_89:

(4, 64588), (6, 64546), (10, 64339), (Start: 11 @64309 has 227 MA's), (Start: 12 @64282 has 30 MA's), (13, 64225), (14, 64204), (15, 64165), (16, 64147), (17, 64126),

Gene: Crownjwl_84 Start: 63618, Stop: 63358, Start Num: 11

Candidate Starts for Crownjwl_84:

(4, 63897), (6, 63855), (7, 63828), (10, 63648), (Start: 11 @63618 has 227 MA's), (Start: 12 @63591 has 30 MA's), (13, 63534), (14, 63513), (15, 63474), (16, 63456), (17, 63435),

Gene: DaddyDaniels_90 Start: 64085, Stop: 63825, Start Num: 11

Candidate Starts for DaddyDaniels_90:

(4, 64364), (6, 64322), (7, 64295), (10, 64115), (Start: 11 @64085 has 227 MA's), (Start: 12 @64058 has 30 MA's), (13, 64001), (14, 63980), (15, 63941), (16, 63923), (17, 63902),

Gene: Daffy_86 Start: 63579, Stop: 63319, Start Num: 11

Candidate Starts for Daffy_86:

(4, 63858), (6, 63816), (10, 63609), (Start: 11 @63579 has 227 MA's), (Start: 12 @63552 has 30 MA's), (13, 63495), (14, 63474), (15, 63435), (16, 63417), (17, 63396),

Gene: Daka_89 Start: 63784, Stop: 63524, Start Num: 11

Candidate Starts for Daka_89:

(4, 64063), (6, 64021), (10, 63814), (Start: 11 @63784 has 227 MA's), (Start: 12 @63757 has 30 MA's), (13, 63700), (14, 63679), (15, 63640), (16, 63622), (17, 63601),

Gene: Dati_84 Start: 63763, Stop: 63503, Start Num: 11

Candidate Starts for Dati_84:

(4, 64042), (6, 64000), (7, 63973), (10, 63793), (Start: 11 @63763 has 227 MA's), (Start: 12 @63736 has 30 MA's), (13, 63679), (14, 63658), (15, 63619), (16, 63601), (17, 63580),

Gene: DelRivs_85 Start: 63392, Stop: 63132, Start Num: 11

Candidate Starts for DelRivs_85:

(6, 63629), (10, 63422), (Start: 11 @63392 has 227 MA's), (Start: 12 @63365 has 30 MA's), (13, 63308), (14, 63287), (15, 63248), (16, 63230), (17, 63209),

Gene: Derpp_86 Start: 63502, Stop: 63242, Start Num: 11

Candidate Starts for Derpp_86:

(6, 63739), (10, 63532), (Start: 11 @63502 has 227 MA's), (Start: 12 @63475 has 30 MA's), (13, 63418), (14, 63397), (15, 63358), (16, 63340), (17, 63319),

Gene: Dice_86 Start: 63424, Stop: 63164, Start Num: 11

Candidate Starts for Dice_86:

(4, 63703), (6, 63661), (7, 63634), (10, 63454), (Start: 11 @63424 has 227 MA's), (Start: 12 @63397 has 30 MA's), (13, 63340), (14, 63319), (15, 63280), (16, 63262), (17, 63241),

Gene: Dingo_84 Start: 63145, Stop: 62885, Start Num: 11

Candidate Starts for Dingo_84:

(4, 63424), (6, 63382), (7, 63355), (10, 63175), (Start: 11 @63145 has 227 MA's), (Start: 12 @63118 has 30 MA's), (13, 63061), (14, 63040), (15, 63001), (16, 62983), (17, 62962),

Gene: Dione_85 Start: 63117, Stop: 62884, Start Num: 12

Candidate Starts for Dione_85:

(6, 63381), (10, 63174), (Start: 11 @63144 has 227 MA's), (Start: 12 @63117 has 30 MA's), (13, 63060), (14, 63039), (15, 63000), (16, 62982), (17, 62961),

Gene: Doddsville_84 Start: 63584, Stop: 63324, Start Num: 11

Candidate Starts for Doddsville_84:

(6, 63821), (10, 63614), (Start: 11 @63584 has 227 MA's), (Start: 12 @63557 has 30 MA's), (13, 63500), (14, 63479), (15, 63440), (16, 63422), (17, 63401),

Gene: DoesntMatter_84 Start: 63420, Stop: 63160, Start Num: 11
Candidate Starts for DoesntMatter_84:
(4, 63699), (6, 63657), (7, 63630), (10, 63450), (Start: 11 @63420 has 227 MA's), (Start: 12 @63393 has 30 MA's), (13, 63336), (14, 63315), (15, 63276), (16, 63258), (17, 63237),

Gene: DoIOn_91 Start: 64843, Stop: 64610, Start Num: 12
Candidate Starts for DoIOn_91:
(4, 65149), (6, 65107), (7, 65080), (10, 64900), (Start: 11 @64870 has 227 MA's), (Start: 12 @64843 has 30 MA's), (13, 64786), (14, 64765), (15, 64726), (16, 64708), (17, 64687),

Gene: DuchessDung_84 Start: 63100, Stop: 62840, Start Num: 11
Candidate Starts for DuchessDung_84:
(6, 63337), (10, 63130), (Start: 11 @63100 has 227 MA's), (Start: 12 @63073 has 30 MA's), (13, 63016), (14, 62995), (15, 62956), (16, 62938), (17, 62917),

Gene: Duggie_87 Start: 63726, Stop: 63466, Start Num: 11
Candidate Starts for Duggie_87:
(4, 64005), (6, 63963), (10, 63756), (Start: 11 @63726 has 227 MA's), (Start: 12 @63699 has 30 MA's), (13, 63642), (14, 63621), (15, 63582), (16, 63564), (17, 63543),

Gene: Durga_89 Start: 64208, Stop: 63948, Start Num: 11
Candidate Starts for Durga_89:
(6, 64445), (7, 64418), (10, 64238), (Start: 11 @64208 has 227 MA's), (Start: 12 @64181 has 30 MA's), (13, 64124), (14, 64103), (15, 64064), (16, 64046), (17, 64025),

Gene: ElvisPhasley_88 Start: 64750, Stop: 64490, Start Num: 11
Candidate Starts for ElvisPhasley_88:
(4, 65029), (6, 64987), (7, 64960), (10, 64780), (Start: 11 @64750 has 227 MA's), (Start: 12 @64723 has 30 MA's), (13, 64666), (14, 64645), (15, 64606), (16, 64588), (17, 64567),

Gene: EmGer13_87 Start: 63412, Stop: 63179, Start Num: 12
Candidate Starts for EmGer13_87:
(4, 63718), (6, 63676), (10, 63469), (Start: 11 @63439 has 227 MA's), (Start: 12 @63412 has 30 MA's), (13, 63355), (14, 63334), (15, 63295), (16, 63277), (17, 63256),

Gene: Emiris_89 Start: 64114, Stop: 63854, Start Num: 11
Candidate Starts for Emiris_89:
(6, 64351), (10, 64144), (Start: 11 @64114 has 227 MA's), (Start: 12 @64087 has 30 MA's), (13, 64030), (14, 64009), (15, 63970), (16, 63952), (17, 63931),

Gene: EmpTee_86 Start: 63516, Stop: 63256, Start Num: 11
Candidate Starts for EmpTee_86:
(4, 63795), (6, 63753), (10, 63546), (Start: 11 @63516 has 227 MA's), (Start: 12 @63489 has 30 MA's), (13, 63432), (14, 63411), (15, 63372), (16, 63354), (17, 63333),

Gene: Eremos_85 Start: 63806, Stop: 63546, Start Num: 11
Candidate Starts for Eremos_85:
(4, 64085), (6, 64043), (7, 64016), (10, 63836), (Start: 11 @63806 has 227 MA's), (Start: 12 @63779 has 30 MA's), (13, 63722), (14, 63701), (15, 63662), (16, 63644), (17, 63623),

Gene: Etaye_86 Start: 64292, Stop: 64032, Start Num: 11
Candidate Starts for Etaye_86:

(4, 64571), (6, 64529), (7, 64502), (10, 64322), (Start: 11 @64292 has 227 MA's), (Start: 12 @64265 has 30 MA's), (13, 64208), (14, 64187), (15, 64148), (16, 64130), (17, 64109),

Gene: Eugenia_89 Start: 64199, Stop: 63966, Start Num: 12

Candidate Starts for Eugenia_89:

(6, 64463), (7, 64436), (10, 64256), (Start: 11 @64226 has 227 MA's), (Start: 12 @64199 has 30 MA's), (13, 64142), (14, 64121), (15, 64082), (16, 64064), (17, 64043),

Gene: Fang_88 Start: 63934, Stop: 63674, Start Num: 11

Candidate Starts for Fang_88:

(6, 64171), (10, 63964), (Start: 11 @63934 has 227 MA's), (Start: 12 @63907 has 30 MA's), (13, 63850), (14, 63829), (15, 63790), (16, 63772), (17, 63751),

Gene: Flake_86 Start: 63706, Stop: 63446, Start Num: 11

Candidate Starts for Flake_86:

(6, 63943), (7, 63916), (10, 63736), (Start: 11 @63706 has 227 MA's), (Start: 12 @63679 has 30 MA's), (13, 63622), (14, 63601), (15, 63562), (16, 63544), (17, 63523),

Gene: FleetyMac_89 Start: 63616, Stop: 63356, Start Num: 11

Candidate Starts for FleetyMac_89:

(4, 63895), (6, 63853), (7, 63826), (10, 63646), (Start: 11 @63616 has 227 MA's), (Start: 12 @63589 has 30 MA's), (13, 63532), (14, 63511), (15, 63472), (16, 63454), (17, 63433),

Gene: FluffyNinja_88 Start: 63777, Stop: 63544, Start Num: 12

Candidate Starts for FluffyNinja_88:

(6, 64041), (10, 63834), (Start: 11 @63804 has 227 MA's), (Start: 12 @63777 has 30 MA's), (13, 63720), (14, 63699), (15, 63660), (16, 63642), (17, 63621),

Gene: Fozzie_84 Start: 64130, Stop: 63870, Start Num: 11

Candidate Starts for Fozzie_84:

(6, 64367), (10, 64160), (Start: 11 @64130 has 227 MA's), (Start: 12 @64103 has 30 MA's), (13, 64046), (14, 64025), (15, 63986), (16, 63968), (17, 63947),

Gene: Frankicide_85 Start: 63630, Stop: 63370, Start Num: 11

Candidate Starts for Frankicide_85:

(4, 63909), (6, 63867), (7, 63840), (10, 63660), (Start: 11 @63630 has 227 MA's), (Start: 12 @63603 has 30 MA's), (13, 63546), (14, 63525), (15, 63486), (16, 63468), (17, 63447),

Gene: FremontTroll_85 Start: 64016, Stop: 63783, Start Num: 12

Candidate Starts for FremontTroll_85:

(6, 64280), (10, 64073), (Start: 11 @64043 has 227 MA's), (Start: 12 @64016 has 30 MA's), (13, 63959), (14, 63938), (15, 63899), (16, 63881), (17, 63860),

Gene: FriarPreacher_84 Start: 63503, Stop: 63243, Start Num: 11

Candidate Starts for FriarPreacher_84:

(4, 63782), (6, 63740), (7, 63713), (10, 63533), (Start: 11 @63503 has 227 MA's), (Start: 12 @63476 has 30 MA's), (13, 63419), (14, 63398), (15, 63359), (16, 63341), (17, 63320),

Gene: Fringe_91 Start: 64280, Stop: 64020, Start Num: 11

Candidate Starts for Fringe_91:

(4, 64559), (6, 64517), (7, 64490), (10, 64310), (Start: 11 @64280 has 227 MA's), (Start: 12 @64253 has 30 MA's), (13, 64196), (14, 64175), (15, 64136), (16, 64118), (17, 64097),

Gene: FugateOSU_87 Start: 64563, Stop: 64303, Start Num: 11

Candidate Starts for FugateOSU_87:

(6, 64800), (10, 64593), (Start: 11 @64563 has 227 MA's), (Start: 12 @64536 has 30 MA's), (13, 64479), (14, 64458), (15, 64419), (16, 64401), (17, 64380),

Gene: Gareth_87 Start: 63952, Stop: 63692, Start Num: 11

Candidate Starts for Gareth_87:

(4, 64231), (6, 64189), (7, 64162), (10, 63982), (Start: 11 @63952 has 227 MA's), (Start: 12 @63925 has 30 MA's), (13, 63868), (14, 63847), (15, 63808), (16, 63790), (17, 63769),

Gene: GeneCoco_87 Start: 64132, Stop: 63872, Start Num: 11

Candidate Starts for GeneCoco_87:

(4, 64411), (6, 64369), (7, 64342), (10, 64162), (Start: 11 @64132 has 227 MA's), (Start: 12 @64105 has 30 MA's), (13, 64048), (14, 64027), (15, 63988), (16, 63970), (17, 63949),

Gene: Giraffe_87 Start: 63956, Stop: 63696, Start Num: 11

Candidate Starts for Giraffe_87:

(6, 64193), (7, 64166), (10, 63986), (Start: 11 @63956 has 227 MA's), (Start: 12 @63929 has 30 MA's), (13, 63872), (14, 63851), (15, 63812), (16, 63794), (17, 63773),

Gene: Grand2040_85 Start: 63894, Stop: 63661, Start Num: 12

Candidate Starts for Grand2040_85:

(4, 64200), (6, 64158), (10, 63951), (Start: 11 @63921 has 227 MA's), (Start: 12 @63894 has 30 MA's), (13, 63837), (14, 63816), (15, 63777), (16, 63759), (17, 63738),

Gene: GreenChile_86 Start: 63589, Stop: 63356, Start Num: 12

Candidate Starts for GreenChile_86:

(4, 63895), (6, 63853), (7, 63826), (10, 63646), (Start: 11 @63616 has 227 MA's), (Start: 12 @63589 has 30 MA's), (13, 63532), (14, 63511), (15, 63472), (16, 63454), (17, 63433),

Gene: Gwennie1_86 Start: 63767, Stop: 63507, Start Num: 11

Candidate Starts for Gwennie1_86:

(4, 64046), (6, 64004), (7, 63977), (10, 63797), (Start: 11 @63767 has 227 MA's), (Start: 12 @63740 has 30 MA's), (13, 63683), (14, 63662), (15, 63623), (16, 63605), (17, 63584),

Gene: Gwilliam_87 Start: 64487, Stop: 64227, Start Num: 11

Candidate Starts for Gwilliam_87:

(4, 64766), (6, 64724), (7, 64697), (10, 64517), (Start: 11 @64487 has 227 MA's), (Start: 12 @64460 has 30 MA's), (13, 64403), (14, 64382), (15, 64343), (16, 64325), (17, 64304),

Gene: Gyarad_0086 Start: 63441, Stop: 63181, Start Num: 11

Candidate Starts for Gyarad_0086:

(4, 63720), (6, 63678), (7, 63651), (10, 63471), (Start: 11 @63441 has 227 MA's), (Start: 12 @63414 has 30 MA's), (13, 63357), (14, 63336), (15, 63297), (16, 63279), (17, 63258),

Gene: HSavage_85 Start: 63458, Stop: 63198, Start Num: 11

Candidate Starts for HSavage_85:

(6, 63695), (10, 63488), (Start: 11 @63458 has 227 MA's), (Start: 12 @63431 has 30 MA's), (13, 63374), (14, 63353), (15, 63314), (16, 63296), (17, 63275),

Gene: Haimas_84 Start: 63383, Stop: 63123, Start Num: 11

Candidate Starts for Haimas_84:

(6, 63620), (10, 63413), (Start: 11 @63383 has 227 MA's), (Start: 12 @63356 has 30 MA's), (13, 63299), (14, 63278), (15, 63239), (16, 63221), (17, 63200),

Gene: Haleema_86 Start: 63502, Stop: 63242, Start Num: 11

Candidate Starts for Haleema_86:

(4, 63781), (6, 63739), (7, 63712), (10, 63532), (Start: 11 @63502 has 227 MA's), (Start: 12 @63475 has 30 MA's), (13, 63418), (14, 63397), (15, 63358), (16, 63340), (17, 63319),

Gene: Hamish_84 Start: 63671, Stop: 63411, Start Num: 11

Candidate Starts for Hamish_84:

(6, 63908), (10, 63701), (Start: 11 @63671 has 227 MA's), (Start: 12 @63644 has 30 MA's), (13, 63587), (14, 63566), (15, 63527), (16, 63509), (17, 63488),

Gene: Happabalu_85 Start: 64570, Stop: 64337, Start Num: 12

Candidate Starts for Happabalu_85:

(4, 64876), (6, 64834), (7, 64807), (10, 64627), (Start: 11 @64597 has 227 MA's), (Start: 12 @64570 has 30 MA's), (13, 64513), (14, 64492), (15, 64453), (16, 64435), (17, 64414),

Gene: Hartsy_85 Start: 63620, Stop: 63360, Start Num: 11

Candidate Starts for Hartsy_85:

(4, 63899), (6, 63857), (7, 63830), (10, 63650), (Start: 11 @63620 has 227 MA's), (Start: 12 @63593 has 30 MA's), (13, 63536), (14, 63515), (15, 63476), (16, 63458), (17, 63437),

Gene: Harvey_84 Start: 63280, Stop: 63020, Start Num: 11

Candidate Starts for Harvey_84:

(4, 63559), (6, 63517), (10, 63310), (Start: 11 @63280 has 227 MA's), (Start: 12 @63253 has 30 MA's), (13, 63196), (14, 63175), (15, 63136), (16, 63118), (17, 63097),

Gene: Hekos_85 Start: 63268, Stop: 63035, Start Num: 12

Candidate Starts for Hekos_85:

(4, 63574), (6, 63532), (7, 63505), (10, 63325), (Start: 11 @63295 has 227 MA's), (Start: 12 @63268 has 30 MA's), (13, 63211), (14, 63190), (15, 63151), (16, 63133), (17, 63112),

Gene: Held_85 Start: 63401, Stop: 63141, Start Num: 11

Candidate Starts for Held_85:

(4, 63680), (6, 63638), (10, 63431), (Start: 11 @63401 has 227 MA's), (Start: 12 @63374 has 30 MA's), (13, 63317), (14, 63296), (15, 63257), (16, 63239), (17, 63218),

Gene: HenryJackson_87 Start: 64120, Stop: 63860, Start Num: 11

Candidate Starts for HenryJackson_87:

(4, 64399), (6, 64357), (7, 64330), (10, 64150), (Start: 11 @64120 has 227 MA's), (Start: 12 @64093 has 30 MA's), (13, 64036), (14, 64015), (15, 63976), (16, 63958), (17, 63937),

Gene: Hertubise_86 Start: 63762, Stop: 63502, Start Num: 11

Candidate Starts for Hertubise_86:

(4, 64041), (6, 63999), (10, 63792), (Start: 11 @63762 has 227 MA's), (Start: 12 @63735 has 30 MA's), (13, 63678), (14, 63657), (15, 63618), (16, 63600), (17, 63579),

Gene: Hetaeria_87 Start: 63769, Stop: 63509, Start Num: 11

Candidate Starts for Hetaeria_87:

(4, 64048), (6, 64006), (10, 63799), (Start: 11 @63769 has 227 MA's), (Start: 12 @63742 has 30 MA's), (13, 63685), (14, 63664), (15, 63625), (16, 63607), (17, 63586),

Gene: HighStump_88 Start: 63907, Stop: 63647, Start Num: 11

Candidate Starts for HighStump_88:

(6, 64144), (7, 64117), (10, 63937), (Start: 11 @63907 has 227 MA's), (Start: 12 @63880 has 30 MA's), (13, 63823), (14, 63802), (15, 63763), (16, 63745), (17, 63724),

Gene: Hocus_85 Start: 63421, Stop: 63161, Start Num: 11

Candidate Starts for Hocus_85:

(4, 63700), (6, 63658), (7, 63631), (10, 63451), (Start: 11 @63421 has 227 MA's), (Start: 12 @63394 has 30 MA's), (13, 63337), (14, 63316), (15, 63277), (16, 63259), (17, 63238),

Gene: HogWash_87 Start: 64434, Stop: 64174, Start Num: 11

Candidate Starts for HogWash_87:

(4, 64713), (6, 64671), (7, 64644), (10, 64464), (Start: 11 @64434 has 227 MA's), (Start: 12 @64407 has 30 MA's), (13, 64350), (14, 64329), (15, 64290), (16, 64272), (17, 64251),

Gene: ImtiyazSitla_88 Start: 63899, Stop: 63666, Start Num: 12

Candidate Starts for ImtiyazSitla_88:

(6, 64163), (10, 63956), (Start: 11 @63926 has 227 MA's), (Start: 12 @63899 has 30 MA's), (13, 63842), (14, 63821), (15, 63782), (16, 63764), (17, 63743),

Gene: Inchworm_88 Start: 63794, Stop: 63534, Start Num: 11

Candidate Starts for Inchworm_88:

(6, 64031), (10, 63824), (Start: 11 @63794 has 227 MA's), (Start: 12 @63767 has 30 MA's), (13, 63710), (14, 63689), (15, 63650), (16, 63632), (17, 63611),

Gene: Inverness_85 Start: 63595, Stop: 63335, Start Num: 11

Candidate Starts for Inverness_85:

(4, 63874), (6, 63832), (7, 63805), (10, 63625), (Start: 11 @63595 has 227 MA's), (Start: 12 @63568 has 30 MA's), (13, 63511), (14, 63490), (15, 63451), (16, 63433), (17, 63412),

Gene: Iridoclysis_86 Start: 63685, Stop: 63425, Start Num: 11

Candidate Starts for Iridoclysis_86:

(6, 63922), (10, 63715), (Start: 11 @63685 has 227 MA's), (Start: 12 @63658 has 30 MA's), (13, 63601), (14, 63580), (15, 63541), (16, 63523), (17, 63502),

Gene: IsaacEli_89 Start: 63925, Stop: 63665, Start Num: 11

Candidate Starts for IsaacEli_89:

(4, 64204), (6, 64162), (10, 63955), (Start: 11 @63925 has 227 MA's), (Start: 12 @63898 has 30 MA's), (13, 63841), (14, 63820), (15, 63781), (16, 63763), (17, 63742),

Gene: JDog_86 Start: 63955, Stop: 63695, Start Num: 11

Candidate Starts for JDog_86:

(4, 64234), (6, 64192), (7, 64165), (10, 63985), (Start: 11 @63955 has 227 MA's), (Start: 12 @63928 has 30 MA's), (13, 63871), (14, 63850), (15, 63811), (16, 63793), (17, 63772),

Gene: JacAttac_87 Start: 63399, Stop: 63139, Start Num: 11

Candidate Starts for JacAttac_87:

(6, 63636), (10, 63429), (Start: 11 @63399 has 227 MA's), (Start: 12 @63372 has 30 MA's), (13, 63315), (14, 63294), (15, 63255), (16, 63237), (17, 63216),

Gene: JakeO_88 Start: 63683, Stop: 63423, Start Num: 11

Candidate Starts for JakeO_88:

(4, 63962), (6, 63920), (7, 63893), (10, 63713), (Start: 11 @63683 has 227 MA's), (Start: 12 @63656 has 30 MA's), (13, 63599), (14, 63578), (15, 63539), (16, 63521), (17, 63500),

Gene: JangoPhett_85 Start: 63759, Stop: 63499, Start Num: 11

Candidate Starts for JangoPhett_85:

(6, 63996), (10, 63789), (Start: 11 @63759 has 227 MA's), (Start: 12 @63732 has 30 MA's), (13, 63675), (14, 63654), (15, 63615), (16, 63597), (17, 63576),

Gene: Jesabah_89 Start: 64521, Stop: 64261, Start Num: 11

Candidate Starts for Jesabah_89:

(4, 64800), (6, 64758), (7, 64731), (10, 64551), (Start: 11 @64521 has 227 MA's), (Start: 12 @64494 has 30 MA's), (13, 64437), (14, 64416), (15, 64377), (16, 64359), (17, 64338),

Gene: Jillium_88 Start: 64115, Stop: 63855, Start Num: 11

Candidate Starts for Jillium_88:

(4, 64394), (6, 64352), (7, 64325), (10, 64145), (Start: 11 @64115 has 227 MA's), (Start: 12 @64088 has 30 MA's), (13, 64031), (14, 64010), (15, 63971), (16, 63953), (17, 63932),

Gene: Jiminy_87 Start: 63619, Stop: 63359, Start Num: 11

Candidate Starts for Jiminy_87:

(4, 63898), (6, 63856), (10, 63649), (Start: 11 @63619 has 227 MA's), (Start: 12 @63592 has 30 MA's), (13, 63535), (14, 63514), (15, 63475), (16, 63457), (17, 63436),

Gene: Jiraiya_88 Start: 63703, Stop: 63443, Start Num: 11

Candidate Starts for Jiraiya_88:

(4, 63982), (6, 63940), (7, 63913), (10, 63733), (Start: 11 @63703 has 227 MA's), (Start: 12 @63676 has 30 MA's), (13, 63619), (14, 63598), (15, 63559), (16, 63541), (17, 63520),

Gene: KLucky39_85 Start: 63478, Stop: 63218, Start Num: 11

Candidate Starts for KLucky39_85:

(4, 63757), (6, 63715), (7, 63688), (10, 63508), (Start: 11 @63478 has 227 MA's), (Start: 12 @63451 has 30 MA's), (13, 63394), (14, 63373), (15, 63334), (16, 63316), (17, 63295),

Gene: Kahve_87 Start: 64118, Stop: 63858, Start Num: 11

Candidate Starts for Kahve_87:

(4, 64397), (6, 64355), (7, 64328), (10, 64148), (Start: 11 @64118 has 227 MA's), (Start: 12 @64091 has 30 MA's), (13, 64034), (14, 64013), (15, 63974), (16, 63956), (17, 63935),

Gene: Kailash_85 Start: 63818, Stop: 63558, Start Num: 11

Candidate Starts for Kailash_85:

(6, 64055), (10, 63848), (Start: 11 @63818 has 227 MA's), (Start: 12 @63791 has 30 MA's), (13, 63734), (14, 63713), (15, 63674), (16, 63656), (17, 63635),

Gene: Karn_87 Start: 63647, Stop: 63414, Start Num: 12

Candidate Starts for Karn_87:

(4, 63953), (6, 63911), (7, 63884), (10, 63704), (Start: 11 @63674 has 227 MA's), (Start: 12 @63647 has 30 MA's), (13, 63590), (14, 63569), (15, 63530), (16, 63512), (17, 63491),

Gene: Katniss_89 Start: 63507, Stop: 63274, Start Num: 12

Candidate Starts for Katniss_89:

(6, 63771), (10, 63564), (Start: 11 @63534 has 227 MA's), (Start: 12 @63507 has 30 MA's), (13, 63450), (14, 63429), (15, 63390), (16, 63372), (17, 63351),

Gene: Keitherie_90 Start: 64176, Stop: 63916, Start Num: 11

Candidate Starts for Keitherie_90:

(6, 64413), (10, 64206), (Start: 11 @64176 has 227 MA's), (Start: 12 @64149 has 30 MA's), (13, 64092), (14, 64071), (15, 64032), (16, 64014), (17, 63993),

Gene: Khan1_87 Start: 63870, Stop: 63637, Start Num: 12

Candidate Starts for Khan1_87:

(6, 64134), (10, 63927), (Start: 11 @63897 has 227 MA's), (Start: 12 @63870 has 30 MA's), (13, 63813), (14, 63792), (15, 63753), (16, 63735), (17, 63714),

Gene: Kikipoo_89 Start: 63925, Stop: 63665, Start Num: 11

Candidate Starts for Kikipoo_89:

(4, 64204), (6, 64162), (10, 63955), (Start: 11 @63925 has 227 MA's), (Start: 12 @63898 has 30 MA's), (13, 63841), (14, 63820), (15, 63781), (16, 63763), (17, 63742),

Gene: Kimbrough_88 Start: 63997, Stop: 63737, Start Num: 11

Candidate Starts for Kimbrough_88:

(4, 64276), (6, 64234), (7, 64207), (10, 64027), (Start: 11 @63997 has 227 MA's), (Start: 12 @63970 has 30 MA's), (13, 63913), (14, 63892), (15, 63853), (16, 63835), (17, 63814),

Gene: KingTut_78 Start: 60157, Stop: 59897, Start Num: 11

Candidate Starts for KingTut_78:

(6, 60394), (7, 60367), (10, 60187), (Start: 11 @60157 has 227 MA's), (Start: 12 @60130 has 30 MA's), (13, 60073), (14, 60052), (15, 60013), (16, 59995), (17, 59974),

Gene: KingVeVeVe_85 Start: 63131, Stop: 62871, Start Num: 11

Candidate Starts for KingVeVeVe_85:

(4, 63410), (6, 63368), (7, 63341), (10, 63161), (Start: 11 @63131 has 227 MA's), (Start: 12 @63104 has 30 MA's), (13, 63047), (14, 63026), (15, 62987), (16, 62969), (17, 62948),

Gene: KlimbOn_86 Start: 63437, Stop: 63177, Start Num: 11

Candidate Starts for KlimbOn_86:

(4, 63716), (6, 63674), (10, 63467), (Start: 11 @63437 has 227 MA's), (Start: 12 @63410 has 30 MA's), (13, 63353), (14, 63332), (15, 63293), (16, 63275), (17, 63254),

Gene: Kloppinator_87 Start: 63567, Stop: 63307, Start Num: 11

Candidate Starts for Kloppinator_87:

(6, 63804), (10, 63597), (Start: 11 @63567 has 227 MA's), (Start: 12 @63540 has 30 MA's), (13, 63483), (14, 63462), (15, 63423), (16, 63405), (17, 63384),

Gene: Kwadwo_86 Start: 63422, Stop: 63162, Start Num: 11

Candidate Starts for Kwadwo_86:

(6, 63659), (10, 63452), (Start: 11 @63422 has 227 MA's), (Start: 12 @63395 has 30 MA's), (13, 63338), (14, 63317), (15, 63278), (16, 63260), (17, 63239),

Gene: Kwksand96_88 Start: 63689, Stop: 63429, Start Num: 11

Candidate Starts for Kwksand96_88:

(6, 63926), (10, 63719), (Start: 11 @63689 has 227 MA's), (Start: 12 @63662 has 30 MA's), (13, 63605), (14, 63584), (15, 63545), (16, 63527), (17, 63506),

Gene: Labeouficaum_87 Start: 63502, Stop: 63242, Start Num: 11

Candidate Starts for Labeouficaum_87:

(6, 63739), (10, 63532), (Start: 11 @63502 has 227 MA's), (Start: 12 @63475 has 30 MA's), (13, 63418), (14, 63397), (15, 63358), (16, 63340), (17, 63319),

Gene: Larson_89 Start: 63739, Stop: 63506, Start Num: 12

Candidate Starts for Larson_89:

(6, 64003), (7, 63976), (10, 63796), (Start: 11 @63766 has 227 MA's), (Start: 12 @63739 has 30 MA's), (13, 63682), (14, 63661), (15, 63622), (16, 63604), (17, 63583),

Gene: LasagnaCat_88 Start: 63804, Stop: 63544, Start Num: 11

Candidate Starts for LasagnaCat_88:

(6, 64041), (10, 63834), (Start: 11 @63804 has 227 MA's), (Start: 12 @63777 has 30 MA's), (13, 63720), (14, 63699), (15, 63660), (16, 63642), (17, 63621),

Gene: Lasso_86 Start: 63663, Stop: 63403, Start Num: 11

Candidate Starts for Lasso_86:

(4, 63942), (6, 63900), (7, 63873), (10, 63693), (Start: 11 @63663 has 227 MA's), (Start: 12 @63636 has 30 MA's), (13, 63579), (14, 63558), (15, 63519), (16, 63501), (17, 63480),

Gene: LeeLot_85 Start: 63980, Stop: 63747, Start Num: 12

Candidate Starts for LeeLot_85:

(4, 64286), (6, 64244), (7, 64217), (10, 64037), (Start: 11 @64007 has 227 MA's), (Start: 12 @63980 has 30 MA's), (13, 63923), (14, 63902), (15, 63863), (16, 63845), (17, 63824),

Gene: Lego3393_85 Start: 64124, Stop: 63864, Start Num: 11

Candidate Starts for Lego3393_85:

(6, 64361), (10, 64154), (Start: 11 @64124 has 227 MA's), (Start: 12 @64097 has 30 MA's), (13, 64040), (14, 64019), (16, 63962), (17, 63941),

Gene: Legolas_88 Start: 63751, Stop: 63491, Start Num: 11

Candidate Starts for Legolas_88:

(4, 64030), (6, 63988), (7, 63961), (10, 63781), (Start: 11 @63751 has 227 MA's), (Start: 12 @63724 has 30 MA's), (13, 63667), (14, 63646), (15, 63607), (16, 63589), (17, 63568),

Gene: Lehmann_89 Start: 63987, Stop: 63754, Start Num: 12

Candidate Starts for Lehmann_89:

(6, 64251), (10, 64044), (Start: 11 @64014 has 227 MA's), (Start: 12 @63987 has 30 MA's), (13, 63930), (14, 63909), (15, 63870), (16, 63852), (17, 63831),

Gene: LeiMonet_90 Start: 63885, Stop: 63625, Start Num: 11

Candidate Starts for LeiMonet_90:

(4, 64164), (6, 64122), (10, 63915), (Start: 11 @63885 has 227 MA's), (Start: 12 @63858 has 30 MA's), (13, 63801), (14, 63780), (15, 63741), (16, 63723), (17, 63702),

Gene: LemonSlice_87 Start: 63410, Stop: 63150, Start Num: 11

Candidate Starts for LemonSlice_87:

(6, 63647), (10, 63440), (Start: 11 @63410 has 227 MA's), (Start: 12 @63383 has 30 MA's), (13, 63326), (14, 63305), (15, 63266), (16, 63248), (17, 63227),

Gene: Longacauda_88 Start: 63904, Stop: 63644, Start Num: 11

Candidate Starts for Longacauda_88:

(4, 64183), (6, 64141), (7, 64114), (10, 63934), (Start: 11 @63904 has 227 MA's), (Start: 12 @63877 has 30 MA's), (13, 63820), (14, 63799), (15, 63760), (16, 63742), (17, 63721),

Gene: Lopsy_83 Start: 63143, Stop: 62883, Start Num: 11

Candidate Starts for Lopsy_83:

(6, 63380), (10, 63173), (Start: 11 @63143 has 227 MA's), (Start: 12 @63116 has 30 MA's), (13, 63059), (14, 63038), (15, 62999), (16, 62981), (17, 62960),

Gene: LostAndPhound_86 Start: 63925, Stop: 63692, Start Num: 12

Candidate Starts for LostAndPhound_86:

(4, 64231), (6, 64189), (7, 64162), (10, 63982), (Start: 11 @63952 has 227 MA's), (Start: 12 @63925 has 30 MA's), (13, 63868), (14, 63847), (15, 63808), (16, 63790), (17, 63769),

Gene: LuckyMarjie_84 Start: 63162, Stop: 62902, Start Num: 11

Candidate Starts for LuckyMarjie_84:

(4, 63441), (6, 63399), (7, 63372), (10, 63192), (Start: 11 @63162 has 227 MA's), (Start: 12 @63135 has 30 MA's), (13, 63078), (14, 63057), (15, 63018), (16, 63000), (17, 62979),

Gene: Lulwa_84 Start: 62776, Stop: 62516, Start Num: 11

Candidate Starts for Lulwa_84:

(4, 63055), (6, 63013), (10, 62806), (Start: 11 @62776 has 227 MA's), (Start: 12 @62749 has 30 MA's), (13, 62692), (14, 62671), (15, 62632), (16, 62614), (17, 62593),

Gene: Lumine_88 Start: 63601, Stop: 63341, Start Num: 11

Candidate Starts for Lumine_88:

(4, 63880), (6, 63838), (7, 63811), (10, 63631), (Start: 11 @63601 has 227 MA's), (Start: 12 @63574 has 30 MA's), (13, 63517), (14, 63496), (15, 63457), (16, 63439), (17, 63418),

Gene: MRabcd_87 Start: 63878, Stop: 63618, Start Num: 11

Candidate Starts for MRabcd_87:

(6, 64115), (10, 63908), (Start: 11 @63878 has 227 MA's), (Start: 12 @63851 has 30 MA's), (13, 63794), (14, 63773), (15, 63734), (16, 63716), (17, 63695),

Gene: Mag7_85 Start: 63362, Stop: 63102, Start Num: 11

Candidate Starts for Mag7_85:

(6, 63599), (10, 63392), (Start: 11 @63362 has 227 MA's), (Start: 12 @63335 has 30 MA's), (13, 63278), (14, 63257), (15, 63218), (16, 63200), (17, 63179),

Gene: Magic8_86 Start: 63730, Stop: 63470, Start Num: 11

Candidate Starts for Magic8_86:

(6, 63967), (10, 63760), (Start: 11 @63730 has 227 MA's), (Start: 12 @63703 has 30 MA's), (13, 63646), (14, 63625), (15, 63586), (16, 63568), (17, 63547),

Gene: Manad_86 Start: 63676, Stop: 63416, Start Num: 11

Candidate Starts for Manad_86:

(4, 63955), (6, 63913), (7, 63886), (10, 63706), (Start: 11 @63676 has 227 MA's), (13, 63592), (14, 63571), (15, 63532), (16, 63514), (17, 63493),

Gene: Maru_87 Start: 64014, Stop: 63754, Start Num: 11

Candidate Starts for Maru_87:

(4, 64293), (6, 64251), (10, 64044), (Start: 11 @64014 has 227 MA's), (Start: 12 @63987 has 30 MA's), (13, 63930), (14, 63909), (15, 63870), (16, 63852), (17, 63831),

Gene: Maskar_88 Start: 63899, Stop: 63666, Start Num: 12

Candidate Starts for Maskar_88:

(6, 64163), (10, 63956), (Start: 11 @63926 has 227 MA's), (Start: 12 @63899 has 30 MA's), (13, 63842), (14, 63821), (15, 63782), (16, 63764), (17, 63743),

Gene: Matalotodo_85 Start: 64383, Stop: 64150, Start Num: 12

Candidate Starts for Matalotodo_85:

(6, 64647), (7, 64620), (10, 64440), (Start: 11 @64410 has 227 MA's), (Start: 12 @64383 has 30 MA's), (13, 64326), (14, 64305), (15, 64266), (16, 64248), (17, 64227),

Gene: Mcshane_86 Start: 63424, Stop: 63164, Start Num: 11

Candidate Starts for Mcshane_86:

(6, 63661), (10, 63454), (Start: 11 @63424 has 227 MA's), (Start: 12 @63397 has 30 MA's), (13, 63340), (14, 63319), (15, 63280), (16, 63262), (17, 63241),

Gene: Mecca_87 Start: 63978, Stop: 63718, Start Num: 11

Candidate Starts for Mecca_87:

(4, 64257), (6, 64215), (7, 64188), (10, 64008), (Start: 11 @63978 has 227 MA's), (Start: 12 @63951 has 30 MA's), (13, 63894), (14, 63873), (15, 63834), (16, 63816), (17, 63795),

Gene: Megamind20_87 Start: 63361, Stop: 63128, Start Num: 12

Candidate Starts for Megamind20_87:

(4, 63667), (6, 63625), (7, 63598), (10, 63418), (Start: 11 @63388 has 227 MA's), (Start: 12 @63361 has 30 MA's), (13, 63304), (14, 63283), (15, 63244), (16, 63226), (17, 63205),

Gene: Megatron_88 Start: 64069, Stop: 63836, Start Num: 12

Candidate Starts for Megatron_88:

(4, 64375), (6, 64333), (10, 64126), (Start: 11 @64096 has 227 MA's), (Start: 12 @64069 has 30 MA's), (13, 64012), (14, 63991), (15, 63952), (16, 63934), (17, 63913),

Gene: Melc17_84 Start: 64046, Stop: 63786, Start Num: 11

Candidate Starts for Melc17_84:

(10, 64076), (Start: 11 @64046 has 227 MA's), (Start: 12 @64019 has 30 MA's), (13, 63962), (14, 63941), (15, 63902), (16, 63884), (17, 63863),

Gene: MelsMeow_86 Start: 63659, Stop: 63426, Start Num: 12

Candidate Starts for MelsMeow_86:

(6, 63923), (10, 63716), (Start: 11 @63686 has 227 MA's), (Start: 12 @63659 has 30 MA's), (13, 63602), (14, 63581), (15, 63542), (16, 63524), (17, 63503),

Gene: Mesh1_88 Start: 64142, Stop: 63882, Start Num: 11

Candidate Starts for Mesh1_88:

(4, 64421), (6, 64379), (7, 64352), (10, 64172), (Start: 11 @64142 has 227 MA's), (Start: 12 @64115 has 30 MA's), (13, 64058), (14, 64037), (15, 63998), (16, 63980), (17, 63959),

Gene: Mesmerelda_86 Start: 63977, Stop: 63717, Start Num: 11

Candidate Starts for Mesmerelda_86:

(6, 64214), (10, 64007), (Start: 11 @63977 has 227 MA's), (Start: 12 @63950 has 30 MA's), (13, 63893), (14, 63872), (15, 63833), (16, 63815), (17, 63794),

Gene: MichaelPhcott_85 Start: 63359, Stop: 63099, Start Num: 11

Candidate Starts for MichaelPhcott_85:

(6, 63596), (10, 63389), (Start: 11 @63359 has 227 MA's), (Start: 12 @63332 has 30 MA's), (13, 63275), (14, 63254), (15, 63215), (16, 63197), (17, 63176),

Gene: MiniBoss_83 Start: 62730, Stop: 62470, Start Num: 11

Candidate Starts for MiniBoss_83:

(4, 63009), (6, 62967), (7, 62940), (10, 62760), (Start: 11 @62730 has 227 MA's), (Start: 12 @62703 has 30 MA's), (13, 62646), (14, 62625), (15, 62586), (16, 62568), (17, 62547),

Gene: MitKao_87 Start: 63580, Stop: 63320, Start Num: 11

Candidate Starts for MitKao_87:

(4, 63859), (6, 63817), (10, 63610), (Start: 11 @63580 has 227 MA's), (Start: 12 @63553 has 30 MA's), (13, 63496), (14, 63475), (15, 63436), (16, 63418), (17, 63397),

Gene: Morgushi_84 Start: 63394, Stop: 63134, Start Num: 11

Candidate Starts for Morgushi_84:

(4, 63673), (6, 63631), (10, 63424), (Start: 11 @63394 has 227 MA's), (Start: 12 @63367 has 30 MA's), (13, 63310), (14, 63289), (15, 63250), (16, 63232), (17, 63211),

Gene: Mosaic_84 Start: 63576, Stop: 63316, Start Num: 11

Candidate Starts for Mosaic_84:

(4, 63855), (6, 63813), (7, 63786), (10, 63606), (Start: 11 @63576 has 227 MA's), (Start: 12 @63549 has 30 MA's), (13, 63492), (14, 63471), (15, 63432), (16, 63414), (17, 63393),

Gene: MrPhizzler_90 Start: 63847, Stop: 63614, Start Num: 12

Candidate Starts for MrPhizzler_90:

(4, 64153), (6, 64111), (7, 64084), (10, 63904), (Start: 11 @63874 has 227 MA's), (Start: 12 @63847 has 30 MA's), (13, 63790), (14, 63769), (15, 63730), (16, 63712), (17, 63691),

Gene: Mulan_86 Start: 63608, Stop: 63348, Start Num: 11

Candidate Starts for Mulan_86:

(6, 63845), (10, 63638), (Start: 11 @63608 has 227 MA's), (Start: 12 @63581 has 30 MA's), (13, 63524), (14, 63503), (15, 63464), (16, 63446), (17, 63425),

Gene: Murdoc_83 Start: 63687, Stop: 63427, Start Num: 11

Candidate Starts for Murdoc_83:

(6, 63924), (10, 63717), (Start: 11 @63687 has 227 MA's), (Start: 12 @63660 has 30 MA's), (13, 63603), (14, 63582), (15, 63543), (16, 63525), (17, 63504),

Gene: Mutante_88 Start: 63581, Stop: 63321, Start Num: 11

Candidate Starts for Mutante_88:

(6, 63818), (10, 63611), (Start: 11 @63581 has 227 MA's), (Start: 12 @63554 has 30 MA's), (13, 63497), (14, 63476), (15, 63437), (16, 63419), (17, 63398),

Gene: Nacho_0089 Start: 64652, Stop: 64392, Start Num: 11

Candidate Starts for Nacho_0089:

(4, 64931), (6, 64889), (7, 64862), (10, 64682), (Start: 11 @64652 has 227 MA's), (Start: 12 @64625 has 30 MA's), (13, 64568), (14, 64547), (15, 64508), (16, 64490), (17, 64469),

Gene: Nathan_87 Start: 64107, Stop: 63847, Start Num: 11

Candidate Starts for Nathan_87:

(4, 64386), (6, 64344), (7, 64317), (10, 64137), (Start: 11 @64107 has 227 MA's), (Start: 12 @64080 has 30 MA's), (13, 64023), (14, 64002), (15, 63963), (16, 63945), (17, 63924),

Gene: NiaNia_88 Start: 63426, Stop: 63193, Start Num: 12

Candidate Starts for NiaNia_88:

(4, 63732), (6, 63690), (7, 63663), (10, 63483), (Start: 11 @63453 has 227 MA's), (Start: 12 @63426 has 30 MA's), (13, 63369), (14, 63348), (15, 63309), (16, 63291), (17, 63270),

Gene: Nicole21_88 Start: 63714, Stop: 63454, Start Num: 11

Candidate Starts for Nicole21_88:

(6, 63951), (10, 63744), (Start: 11 @63714 has 227 MA's), (Start: 12 @63687 has 30 MA's), (13, 63630), (14, 63609), (15, 63570), (16, 63552), (17, 63531),

Gene: Nova1_86 Start: 63533, Stop: 63300, Start Num: 12

Candidate Starts for Nova1_86:

(6, 63797), (10, 63590), (Start: 11 @63560 has 227 MA's), (Start: 12 @63533 has 30 MA's), (13, 63476), (14, 63455), (15, 63416), (16, 63398), (17, 63377),

Gene: Numberten_86 Start: 63696, Stop: 63436, Start Num: 11

Candidate Starts for Numberten_86:

(4, 63975), (6, 63933), (7, 63906), (10, 63726), (Start: 11 @63696 has 227 MA's), (Start: 12 @63669 has 30 MA's), (13, 63612), (14, 63591), (15, 63552), (16, 63534), (17, 63513),

Gene: Nyala_86 Start: 63430, Stop: 63170, Start Num: 11

Candidate Starts for Nyala_86:

(6, 63667), (10, 63460), (Start: 11 @63430 has 227 MA's), (Start: 12 @63403 has 30 MA's), (13, 63346), (14, 63325), (15, 63286), (16, 63268), (17, 63247),

Gene: OSmaximus_88 Start: 64261, Stop: 64001, Start Num: 11

Candidate Starts for OSmaximus_88:

(6, 64498), (10, 64291), (Start: 11 @64261 has 227 MA's), (Start: 12 @64234 has 30 MA's), (13, 64177), (14, 64156), (15, 64117), (16, 64099), (17, 64078),

Gene: Olak_86 Start: 63594, Stop: 63334, Start Num: 11

Candidate Starts for Olak_86:

(4, 63873), (6, 63831), (7, 63804), (10, 63624), (Start: 11 @63594 has 227 MA's), (Start: 12 @63567 has 30 MA's), (13, 63510), (14, 63489), (15, 63450), (16, 63432), (17, 63411),

Gene: Oline_86 Start: 63585, Stop: 63325, Start Num: 11

Candidate Starts for Oline_86:

(6, 63822), (10, 63615), (Start: 11 @63585 has 227 MA's), (Start: 12 @63558 has 30 MA's), (13, 63501), (14, 63480), (15, 63441), (16, 63423), (17, 63402),

Gene: Omniscient_88 Start: 64257, Stop: 64024, Start Num: 12

Candidate Starts for Omniscient_88:

(6, 64521), (10, 64314), (Start: 11 @64284 has 227 MA's), (Start: 12 @64257 has 30 MA's), (13, 64200), (14, 64179), (15, 64140), (16, 64122), (17, 64101),

Gene: OneBrain_89 Start: 63845, Stop: 63585, Start Num: 11

Candidate Starts for OneBrain_89:

(4, 64124), (6, 64082), (7, 64055), (10, 63875), (Start: 11 @63845 has 227 MA's), (Start: 12 @63818 has 30 MA's), (13, 63761), (14, 63740), (15, 63701), (16, 63683), (17, 63662),

Gene: Oosterbaan_87 Start: 63821, Stop: 63561, Start Num: 11

Candidate Starts for Oosterbaan_87:

(6, 64058), (10, 63851), (Start: 11 @63821 has 227 MA's), (Start: 12 @63794 has 30 MA's), (13, 63737), (14, 63716), (15, 63677), (16, 63659), (17, 63638),

Gene: Orfeu_86 Start: 63944, Stop: 63684, Start Num: 11

Candidate Starts for Orfeu_86:

(4, 64223), (6, 64181), (10, 63974), (Start: 11 @63944 has 227 MA's), (Start: 12 @63917 has 30 MA's), (13, 63860), (14, 63839), (15, 63800), (16, 63782), (17, 63761),

Gene: Orion_85 Start: 63514, Stop: 63254, Start Num: 11

Candidate Starts for Orion_85:

(6, 63751), (10, 63544), (Start: 11 @63514 has 227 MA's), (Start: 12 @63487 has 30 MA's), (13, 63430), (14, 63409), (15, 63370), (16, 63352), (17, 63331),

Gene: Orwigg_86 Start: 63350, Stop: 63090, Start Num: 11

Candidate Starts for Orwigg_86:

(4, 63629), (6, 63587), (7, 63560), (10, 63380), (Start: 11 @63350 has 227 MA's), (Start: 12 @63323 has 30 MA's), (13, 63266), (14, 63245), (15, 63206), (16, 63188), (17, 63167),

Gene: PG1_85 Start: 64086, Stop: 63826, Start Num: 11

Candidate Starts for PG1_85:

(6, 64323), (10, 64116), (Start: 11 @64086 has 227 MA's), (Start: 12 @64059 has 30 MA's), (13, 64002), (14, 63981), (15, 63942), (16, 63924), (17, 63903),

Gene: Pacifista_86 Start: 63435, Stop: 63175, Start Num: 11

Candidate Starts for Pacifista_86:

(6, 63672), (10, 63465), (Start: 11 @63435 has 227 MA's), (Start: 12 @63408 has 30 MA's), (13, 63351), (14, 63330), (15, 63291), (16, 63273), (17, 63252),

Gene: PallasAthena_88 Start: 63389, Stop: 63156, Start Num: 12

Candidate Starts for PallasAthena_88:

(6, 63653), (10, 63446), (Start: 11 @63416 has 227 MA's), (Start: 12 @63389 has 30 MA's), (13, 63332), (14, 63311), (15, 63272), (16, 63254), (17, 63233),

Gene: Phareon_85 Start: 63127, Stop: 62867, Start Num: 11

Candidate Starts for Phareon_85:

(4, 63406), (6, 63364), (7, 63337), (10, 63157), (Start: 11 @63127 has 227 MA's), (Start: 12 @63100 has 30 MA's), (13, 63043), (14, 63022), (15, 62983), (16, 62965), (17, 62944),

Gene: PhatCats2014_86 Start: 64086, Stop: 63826, Start Num: 11

Candidate Starts for PhatCats2014_86:

(4, 64365), (6, 64323), (10, 64116), (Start: 11 @64086 has 227 MA's), (Start: 12 @64059 has 30 MA's), (13, 64002), (14, 63981), (15, 63942), (16, 63924), (17, 63903),

Gene: PhatLouie_89 Start: 63960, Stop: 63700, Start Num: 11

Candidate Starts for PhatLouie_89:

(4, 64239), (6, 64197), (10, 63990), (Start: 11 @63960 has 227 MA's), (Start: 12 @63933 has 30 MA's), (13, 63876), (14, 63855), (15, 63816), (16, 63798), (17, 63777),

Gene: PhenghisKhan_87 Start: 63591, Stop: 63331, Start Num: 11

Candidate Starts for PhenghisKhan_87:

(4, 63870), (6, 63828), (7, 63801), (10, 63621), (Start: 11 @63591 has 227 MA's), (Start: 12 @63564 has 30 MA's), (13, 63507), (14, 63486), (15, 63447), (16, 63429), (17, 63408),

Gene: Pherdinand_88 Start: 63806, Stop: 63546, Start Num: 11

Candidate Starts for Pherdinand_88:

(6, 64043), (10, 63836), (Start: 11 @63806 has 227 MA's), (Start: 12 @63779 has 30 MA's), (13, 63722), (14, 63701), (16, 63644), (17, 63623),

Gene: Phergie_87 Start: 63580, Stop: 63320, Start Num: 11

Candidate Starts for Phergie_87:

(4, 63859), (6, 63817), (7, 63790), (10, 63610), (Start: 11 @63580 has 227 MA's), (Start: 12 @63553 has 30 MA's), (13, 63496), (14, 63475), (15, 63436), (16, 63418), (17, 63397),

Gene: Phipps_85 Start: 63658, Stop: 63398, Start Num: 11

Candidate Starts for Phipps_85:

(4, 63937), (6, 63895), (7, 63868), (10, 63688), (Start: 11 @63658 has 227 MA's), (Start: 12 @63631 has 30 MA's), (13, 63574), (14, 63553), (15, 63514), (16, 63496), (17, 63475),

Gene: Phleuron_84 Start: 63392, Stop: 63132, Start Num: 11

Candidate Starts for Phleuron_84:

(6, 63629), (10, 63422), (Start: 11 @63392 has 227 MA's), (Start: 12 @63365 has 30 MA's), (13, 63308), (14, 63287), (15, 63248), (16, 63230), (17, 63209),

Gene: PhrankReynolds_85 Start: 63585, Stop: 63325, Start Num: 11

Candidate Starts for PhrankReynolds_85:

(4, 63864), (6, 63822), (7, 63795), (10, 63615), (Start: 11 @63585 has 227 MA's), (Start: 12 @63558 has 30 MA's), (13, 63501), (14, 63480), (15, 63441), (16, 63423), (17, 63402),

Gene: PhrodoBaggins_89 Start: 63961, Stop: 63701, Start Num: 11

Candidate Starts for PhrodoBaggins_89:

(6, 64198), (10, 63991), (Start: 11 @63961 has 227 MA's), (Start: 12 @63934 has 30 MA's), (13, 63877), (14, 63856), (15, 63817), (16, 63799), (17, 63778),

Gene: PinheadLarry_86 Start: 63731, Stop: 63471, Start Num: 11

Candidate Starts for PinheadLarry_86:

(6, 63968), (10, 63761), (Start: 11 @63731 has 227 MA's), (Start: 12 @63704 has 30 MA's), (13, 63647), (14, 63626), (15, 63587), (16, 63569), (17, 63548),

Gene: Pinkman_86 Start: 63777, Stop: 63544, Start Num: 12

Candidate Starts for Pinkman_86:

(4, 64083), (6, 64041), (7, 64014), (10, 63834), (Start: 11 @63804 has 227 MA's), (Start: 12 @63777 has 30 MA's), (13, 63720), (14, 63699), (15, 63660), (16, 63642), (17, 63621),

Gene: Pipsqueak_84 Start: 63417, Stop: 63157, Start Num: 11

Candidate Starts for Pipsqueak_84:

(4, 63696), (6, 63654), (7, 63627), (10, 63447), (Start: 11 @63417 has 227 MA's), (Start: 12 @63390 has 30 MA's), (13, 63333), (14, 63312), (15, 63273), (16, 63255), (17, 63234),

Gene: Placalicious_85 Start: 64450, Stop: 64190, Start Num: 11

Candidate Starts for Placalicious_85:

(4, 64729), (6, 64687), (7, 64660), (10, 64480), (Start: 11 @64450 has 227 MA's), (Start: 12 @64423 has 30 MA's), (13, 64366), (14, 64345), (15, 64306), (16, 64288), (17, 64267),

Gene: Plata_86 Start: 63645, Stop: 63412, Start Num: 12

Candidate Starts for Plata_86:

(4, 63951), (6, 63909), (7, 63882), (10, 63702), (Start: 11 @63672 has 227 MA's), (Start: 12 @63645 has 30 MA's), (13, 63588), (14, 63567), (15, 63528), (16, 63510), (17, 63489),

Gene: Pops_84 Start: 63568, Stop: 63335, Start Num: 12

Candidate Starts for Pops_84:

(6, 63832), (10, 63625), (Start: 11 @63595 has 227 MA's), (Start: 12 @63568 has 30 MA's), (13, 63511), (14, 63490), (15, 63451), (16, 63433), (17, 63412),

Gene: Potter_82 Start: 63414, Stop: 63154, Start Num: 11

Candidate Starts for Potter_82:

(4, 63693), (6, 63651), (7, 63624), (10, 63444), (Start: 11 @63414 has 227 MA's), (Start: 12 @63387 has 30 MA's), (13, 63330), (14, 63309), (15, 63270), (16, 63252), (17, 63231),

Gene: Prickles_88 Start: 63783, Stop: 63523, Start Num: 11

Candidate Starts for Prickles_88:

(4, 64062), (6, 64020), (10, 63813), (Start: 11 @63783 has 227 MA's), (Start: 12 @63756 has 30 MA's), (13, 63699), (14, 63678), (15, 63639), (16, 63621), (17, 63600),

Gene: ProfessorX_85 Start: 63451, Stop: 63191, Start Num: 11

Candidate Starts for ProfessorX_85:

(4, 63730), (6, 63688), (10, 63481), (Start: 11 @63451 has 227 MA's), (Start: 12 @63424 has 30 MA's), (13, 63367), (14, 63346), (15, 63307), (16, 63289), (17, 63268),

Gene: Puhltonio_83 Start: 63688, Stop: 63428, Start Num: 11

Candidate Starts for Puhltonio_83:

(4, 63967), (6, 63925), (7, 63898), (10, 63718), (Start: 11 @63688 has 227 MA's), (Start: 12 @63661 has 30 MA's), (13, 63604), (14, 63583), (15, 63544), (16, 63526), (17, 63505),

Gene: QueenBeane_87 Start: 63737, Stop: 63477, Start Num: 11

Candidate Starts for QueenBeane_87:

(6, 63974), (10, 63767), (Start: 11 @63737 has 227 MA's), (Start: 12 @63710 has 30 MA's), (13, 63653), (14, 63632), (15, 63593), (16, 63575), (17, 63554),

Gene: Quisquilliae_89 Start: 63748, Stop: 63488, Start Num: 11

Candidate Starts for Quisquilliae_89:

(4, 64027), (6, 63985), (7, 63958), (10, 63778), (Start: 11 @63748 has 227 MA's), (Start: 12 @63721 has 30 MA's), (13, 63664), (14, 63643), (15, 63604), (16, 63586), (17, 63565),

Gene: RedMaple_86 Start: 64351, Stop: 64091, Start Num: 11

Candidate Starts for RedMaple_86:

(4, 64630), (6, 64588), (7, 64561), (10, 64381), (Start: 11 @64351 has 227 MA's), (Start: 12 @64324 has 30 MA's), (13, 64267), (14, 64246), (15, 64207), (16, 64189), (17, 64168),

Gene: RedRaider89_86 Start: 64037, Stop: 63777, Start Num: 11

Candidate Starts for RedRaider89_86:

(4, 64316), (6, 64274), (7, 64247), (10, 64067), (Start: 11 @64037 has 227 MA's), (Start: 12 @64010 has 30 MA's), (13, 63953), (14, 63932), (15, 63893), (16, 63875), (17, 63854),

Gene: Ricotta_87 Start: 63433, Stop: 63173, Start Num: 11

Candidate Starts for Ricotta_87:

(6, 63670), (10, 63463), (Start: 11 @63433 has 227 MA's), (Start: 12 @63406 has 30 MA's), (13, 63349), (14, 63328), (15, 63289), (16, 63271), (17, 63250),

Gene: Riggan_88 Start: 63918, Stop: 63658, Start Num: 11

Candidate Starts for Riggan_88:

(4, 64197), (6, 64155), (10, 63948), (Start: 11 @63918 has 227 MA's), (Start: 12 @63891 has 30 MA's), (13, 63834), (14, 63813), (15, 63774), (16, 63756), (17, 63735),

Gene: Riverton_86 Start: 63650, Stop: 63417, Start Num: 12

Candidate Starts for Riverton_86:

(4, 63956), (6, 63914), (7, 63887), (10, 63707), (Start: 11 @63677 has 227 MA's), (Start: 12 @63650 has 30 MA's), (13, 63593), (14, 63572), (15, 63533), (16, 63515), (17, 63494),

Gene: Robyn_89 Start: 64176, Stop: 63916, Start Num: 11

Candidate Starts for Robyn_89:

(4, 64455), (6, 64413), (7, 64386), (10, 64206), (Start: 11 @64176 has 227 MA's), (Start: 12 @64149 has 30 MA's), (13, 64092), (14, 64071), (16, 64014), (17, 63993),

Gene: Roliet_84 Start: 62778, Stop: 62518, Start Num: 11

Candidate Starts for Roliet_84:

(4, 63057), (6, 63015), (7, 62988), (10, 62808), (Start: 11 @62778 has 227 MA's), (Start: 12 @62751 has 30 MA's), (13, 62694), (14, 62673), (15, 62634), (16, 62616), (17, 62595),

Gene: Roy17_84 Start: 63143, Stop: 62883, Start Num: 11

Candidate Starts for Roy17_84:

(4, 63422), (6, 63380), (7, 63353), (10, 63173), (Start: 11 @63143 has 227 MA's), (Start: 12 @63116 has 30 MA's), (13, 63059), (14, 63038), (15, 62999), (16, 62981), (17, 62960),

Gene: SDcharge11_86 Start: 63071, Stop: 62811, Start Num: 11

Candidate Starts for SDcharge11_86:

(4, 63350), (6, 63308), (10, 63101), (Start: 11 @63071 has 227 MA's), (Start: 12 @63044 has 30 MA's), (13, 62987), (14, 62966), (15, 62927), (16, 62909), (17, 62888),

Gene: SallyH_90 Start: 63677, Stop: 63417, Start Num: 11

Candidate Starts for SallyH_90:

(6, 63914), (10, 63707), (Start: 11 @63677 has 227 MA's), (13, 63593), (14, 63572), (16, 63515), (17, 63494),

Gene: Samaymay_87 Start: 63737, Stop: 63477, Start Num: 11

Candidate Starts for Samaymay_87:

(6, 63974), (10, 63767), (Start: 11 @63737 has 227 MA's), (Start: 12 @63710 has 30 MA's), (13, 63653), (14, 63632), (15, 63593), (16, 63575), (17, 63554),

Gene: SassyCat97_85 Start: 63405, Stop: 63145, Start Num: 11

Candidate Starts for SassyCat97_85:

(4, 63684), (6, 63642), (7, 63615), (10, 63435), (Start: 11 @63405 has 227 MA's), (Start: 12 @63378 has 30 MA's), (13, 63321), (14, 63300), (15, 63261), (16, 63243), (17, 63222),

Gene: Schadenfreude_87 Start: 63296, Stop: 63036, Start Num: 11

Candidate Starts for Schadenfreude_87:

(2, 63632), (6, 63530), (10, 63326), (Start: 11 @63296 has 227 MA's), (Start: 12 @63269 has 30 MA's), (13, 63212), (14, 63191), (15, 63152), (16, 63134), (17, 63113),

Gene: Schueller_85 Start: 63679, Stop: 63419, Start Num: 11

Candidate Starts for Schueller_85:

(6, 63916), (10, 63709), (Start: 11 @63679 has 227 MA's), (Start: 12 @63652 has 30 MA's), (13, 63595), (14, 63574), (15, 63535), (16, 63517), (17, 63496),

Gene: Scoot17C_87 Start: 63518, Stop: 63258, Start Num: 11

Candidate Starts for Scoot17C_87:

(6, 63755), (10, 63548), (Start: 11 @63518 has 227 MA's), (Start: 12 @63491 has 30 MA's), (13, 63434), (14, 63413), (15, 63374), (16, 63356), (17, 63335),

Gene: Scrick_86 Start: 63419, Stop: 63159, Start Num: 11

Candidate Starts for Scrick_86:

(6, 63656), (10, 63449), (Start: 11 @63419 has 227 MA's), (Start: 12 @63392 has 30 MA's), (13, 63335), (14, 63314), (15, 63275), (16, 63257), (17, 63236),

Gene: Selr12_88 Start: 63460, Stop: 63200, Start Num: 11

Candidate Starts for Selr12_88:

(4, 63739), (6, 63697), (7, 63670), (10, 63490), (Start: 11 @63460 has 227 MA's), (Start: 12 @63433 has 30 MA's), (13, 63376), (14, 63355), (15, 63316), (16, 63298), (17, 63277),

Gene: Serendipity_86 Start: 63891, Stop: 63631, Start Num: 11

Candidate Starts for Serendipity_86:

(4, 64170), (6, 64128), (7, 64101), (10, 63921), (Start: 11 @63891 has 227 MA's), (Start: 12 @63864 has 30 MA's), (13, 63807), (14, 63786), (15, 63747), (16, 63729), (17, 63708),

Gene: Serpentine_0088 Start: 63972, Stop: 63712, Start Num: 11

Candidate Starts for Serpentine_0088:

(4, 64251), (6, 64209), (7, 64182), (10, 64002), (Start: 11 @63972 has 227 MA's), (Start: 12 @63945 has 30 MA's), (13, 63888), (14, 63867), (15, 63828), (16, 63810), (17, 63789),

Gene: ShadowBud_87 Start: 63745, Stop: 63485, Start Num: 11

Candidate Starts for ShadowBud_87:

(4, 64024), (6, 63982), (7, 63955), (10, 63775), (Start: 11 @63745 has 227 MA's), (Start: 12 @63718 has 30 MA's), (13, 63661), (14, 63640), (15, 63601), (16, 63583), (17, 63562),

Gene: ShiVal_85 Start: 63442, Stop: 63182, Start Num: 11

Candidate Starts for ShiVal_85:

(6, 63679), (10, 63472), (Start: 11 @63442 has 227 MA's), (Start: 12 @63415 has 30 MA's), (13, 63358), (14, 63337), (15, 63298), (16, 63280), (17, 63259),

Gene: Sigman_86 Start: 63372, Stop: 63139, Start Num: 12

Candidate Starts for Sigman_86:

(6, 63636), (10, 63429), (Start: 11 @63399 has 227 MA's), (Start: 12 @63372 has 30 MA's), (13, 63315), (14, 63294), (15, 63255), (16, 63237), (17, 63216),

Gene: SilverBell_88 Start: 63852, Stop: 63592, Start Num: 11

Candidate Starts for SilverBell_88:

(4, 64131), (6, 64089), (7, 64062), (10, 63882), (Start: 11 @63852 has 227 MA's), (Start: 12 @63825 has 30 MA's), (13, 63768), (14, 63747), (15, 63708), (16, 63690), (17, 63669),

Gene: Simielle_86 Start: 63384, Stop: 63124, Start Num: 11

Candidate Starts for Simielle_86:

(4, 63663), (6, 63621), (7, 63594), (10, 63414), (Start: 11 @63384 has 227 MA's), (Start: 12 @63357 has 30 MA's), (13, 63300), (14, 63279), (15, 63240), (16, 63222), (17, 63201),

Gene: SirBeauregard_88 Start: 63965, Stop: 63705, Start Num: 11

Candidate Starts for SirBeauregard_88:

(4, 64244), (6, 64202), (7, 64175), (10, 63995), (Start: 11 @63965 has 227 MA's), (Start: 12 @63938 has 30 MA's), (13, 63881), (14, 63860), (15, 63821), (16, 63803), (17, 63782),

Gene: Skippy_87 Start: 63813, Stop: 63553, Start Num: 11

Candidate Starts for Skippy_87:

(4, 64092), (6, 64050), (7, 64023), (10, 63843), (Start: 11 @63813 has 227 MA's), (Start: 12 @63786 has 30 MA's), (13, 63729), (14, 63708), (15, 63669), (16, 63651), (17, 63630),

Gene: Slatt_87 Start: 63700, Stop: 63440, Start Num: 11

Candidate Starts for Slatt_87:

(6, 63937), (10, 63730), (Start: 11 @63700 has 227 MA's), (Start: 12 @63673 has 30 MA's), (13, 63616), (14, 63595), (15, 63556), (16, 63538), (17, 63517),

Gene: Soile_88 Start: 63938, Stop: 63678, Start Num: 11

Candidate Starts for Soile_88:

(6, 64175), (10, 63968), (Start: 11 @63938 has 227 MA's), (Start: 12 @63911 has 30 MA's), (13, 63854), (14, 63833), (15, 63794), (16, 63776), (17, 63755),

Gene: Solosis_85 Start: 63406, Stop: 63146, Start Num: 11

Candidate Starts for Solosis_85:

(6, 63643), (7, 63616), (10, 63436), (Start: 11 @63406 has 227 MA's), (Start: 12 @63379 has 30 MA's), (13, 63322), (14, 63301), (15, 63262), (16, 63244), (17, 63223),

Gene: Sophia_85 Start: 63394, Stop: 63134, Start Num: 11

Candidate Starts for Sophia_85:

(6, 63631), (10, 63424), (Start: 11 @63394 has 227 MA's), (Start: 12 @63367 has 30 MA's), (13, 63310), (14, 63289), (15, 63250), (16, 63232), (17, 63211),

Gene: Soto_84 Start: 63111, Stop: 62851, Start Num: 11

Candidate Starts for Soto_84:

(4, 63390), (6, 63348), (10, 63141), (Start: 11 @63111 has 227 MA's), (Start: 12 @63084 has 30 MA's), (13, 63027), (14, 63006), (15, 62967), (16, 62949), (17, 62928),

Gene: Spartan300_86 Start: 63656, Stop: 63396, Start Num: 11

Candidate Starts for Spartan300_86:

(4, 63935), (6, 63893), (7, 63866), (10, 63686), (Start: 11 @63656 has 227 MA's), (Start: 12 @63629 has 30 MA's), (13, 63572), (14, 63551), (15, 63512), (16, 63494), (17, 63473),

Gene: Squid_86 Start: 63685, Stop: 63425, Start Num: 11

Candidate Starts for Squid_86:

(4, 63964), (6, 63922), (7, 63895), (10, 63715), (Start: 11 @63685 has 227 MA's), (Start: 12 @63658 has 30 MA's), (13, 63601), (14, 63580), (15, 63541), (16, 63523), (17, 63502),

Gene: Squiggle_86 Start: 63413, Stop: 63153, Start Num: 11

Candidate Starts for Squiggle_86:

(6, 63650), (10, 63443), (Start: 11 @63413 has 227 MA's), (Start: 12 @63386 has 30 MA's), (13, 63329), (14, 63308), (15, 63269), (16, 63251), (17, 63230),

Gene: StAugustine_80 Start: 63685, Stop: 63476, Start Num: 12

Candidate Starts for StAugustine_80:

(8, 63847), (9, 63775), (Start: 12 @63685 has 30 MA's), (13, 63625), (15, 63568),

Gene: Struggle_87 Start: 63511, Stop: 63251, Start Num: 11

Candidate Starts for Struggle_87:

(4, 63790), (6, 63748), (10, 63541), (Start: 11 @63511 has 227 MA's), (Start: 12 @63484 has 30 MA's), (13, 63427), (14, 63406), (15, 63367), (16, 63349), (17, 63328),

Gene: Suffolk_83 Start: 63407, Stop: 63147, Start Num: 11

Candidate Starts for Suffolk_83:

(4, 63686), (6, 63644), (7, 63617), (10, 63437), (Start: 11 @63407 has 227 MA's), (Start: 12 @63380 has 30 MA's), (13, 63323), (14, 63302), (15, 63263), (16, 63245), (17, 63224),

Gene: Surely_87 Start: 63976, Stop: 63716, Start Num: 11

Candidate Starts for Surely_87:

(6, 64213), (10, 64006), (Start: 11 @63976 has 227 MA's), (Start: 12 @63949 has 30 MA's), (13, 63892), (14, 63871), (15, 63832), (16, 63814), (17, 63793),

Gene: Swiphy_89 Start: 63960, Stop: 63700, Start Num: 11

Candidate Starts for Swiphy_89:

(4, 64239), (6, 64197), (10, 63990), (Start: 11 @63960 has 227 MA's), (Start: 12 @63933 has 30 MA's), (13, 63876), (14, 63855), (15, 63816), (16, 63798), (17, 63777),

Gene: Swish_88 Start: 63822, Stop: 63562, Start Num: 11

Candidate Starts for Swish_88:

(6, 64059), (10, 63852), (Start: 11 @63822 has 227 MA's), (Start: 12 @63795 has 30 MA's), (13, 63738), (14, 63717), (15, 63678), (16, 63660), (17, 63639),

Gene: TallGrassMM_86 Start: 63471, Stop: 63211, Start Num: 11

Candidate Starts for TallGrassMM_86:

(6, 63708), (7, 63681), (10, 63501), (Start: 11 @63471 has 227 MA's), (Start: 12 @63444 has 30 MA's), (13, 63387), (14, 63366), (15, 63327), (16, 63309), (17, 63288),

Gene: Taraxa_87 Start: 63275, Stop: 63042, Start Num: 12

Candidate Starts for Taraxa_87:

(4, 63581), (6, 63539), (7, 63512), (10, 63332), (Start: 11 @63302 has 227 MA's), (Start: 12 @63275 has 30 MA's), (13, 63218), (14, 63197), (15, 63158), (16, 63140), (17, 63119),

Gene: Telesworld_85 Start: 63548, Stop: 63288, Start Num: 11

Candidate Starts for Telesworld_85:

(6, 63785), (10, 63578), (Start: 11 @63548 has 227 MA's), (Start: 12 @63521 has 30 MA's), (13, 63464), (14, 63443), (15, 63404), (16, 63386), (17, 63365),

Gene: Thora_85 Start: 63925, Stop: 63665, Start Num: 11

Candidate Starts for Thora_85:

(6, 64162), (10, 63955), (Start: 11 @63925 has 227 MA's), (Start: 12 @63898 has 30 MA's), (13, 63841), (14, 63820), (15, 63781), (16, 63763), (17, 63742),

Gene: ThreeOh3D2_88 Start: 64079, Stop: 63819, Start Num: 11

Candidate Starts for ThreeOh3D2_88:

(6, 64316), (10, 64109), (Start: 11 @64079 has 227 MA's), (Start: 12 @64052 has 30 MA's), (13, 63995), (14, 63974), (15, 63935), (16, 63917), (17, 63896),

Gene: Thunderbird_87 Start: 63668, Stop: 63408, Start Num: 11

Candidate Starts for Thunderbird_87:

(6, 63905), (7, 63878), (10, 63698), (Start: 11 @63668 has 227 MA's), (Start: 12 @63641 has 30 MA's), (13, 63584), (14, 63563), (15, 63524), (16, 63506), (17, 63485),

Gene: TomBombadil_87 Start: 63969, Stop: 63709, Start Num: 11

Candidate Starts for TomBombadil_87:

(4, 64248), (6, 64206), (10, 63999), (Start: 11 @63969 has 227 MA's), (Start: 12 @63942 has 30 MA's), (13, 63885), (14, 63864), (15, 63825), (16, 63807), (17, 63786),

Gene: Toni_86 Start: 63871, Stop: 63611, Start Num: 11

Candidate Starts for Toni_86:

(4, 64150), (6, 64108), (7, 64081), (10, 63901), (Start: 11 @63871 has 227 MA's), (Start: 12 @63844 has 30 MA's), (13, 63787), (14, 63766), (15, 63727), (16, 63709), (17, 63688),

Gene: TooFast2Furius_86 Start: 63833, Stop: 63573, Start Num: 11

Candidate Starts for TooFast2Furius_86:

(4, 64112), (6, 64070), (7, 64043), (10, 63863), (Start: 11 @63833 has 227 MA's), (Start: 12 @63806 has 30 MA's), (13, 63749), (14, 63728), (15, 63689), (16, 63671), (17, 63650),

Gene: Tooj_84 Start: 63085, Stop: 62825, Start Num: 11

Candidate Starts for Tooj_84:

(4, 63364), (6, 63322), (10, 63115), (Start: 11 @63085 has 227 MA's), (Start: 12 @63058 has 30 MA's), (13, 63001), (14, 62980), (15, 62941), (16, 62923), (17, 62902),

Gene: Triad_88 Start: 63292, Stop: 63059, Start Num: 12

Candidate Starts for Triad_88:

(6, 63556), (7, 63529), (10, 63349), (Start: 11 @63319 has 227 MA's), (Start: 12 @63292 has 30 MA's), (13, 63235), (14, 63214), (15, 63175), (16, 63157), (17, 63136),

Gene: True_85 Start: 63418, Stop: 63158, Start Num: 11

Candidate Starts for True_85:

(6, 63655), (10, 63448), (Start: 11 @63418 has 227 MA's), (Start: 12 @63391 has 30 MA's), (13, 63334), (14, 63313), (15, 63274), (16, 63256), (17, 63235),

Gene: Trypo_87 Start: 64113, Stop: 63880, Start Num: 12

Candidate Starts for Trypo_87:

(4, 64419), (6, 64377), (7, 64350), (10, 64170), (Start: 11 @64140 has 227 MA's), (Start: 12 @64113 has 30 MA's), (13, 64056), (14, 64035), (15, 63996), (16, 63978), (17, 63957),

Gene: TyrionL_87 Start: 63502, Stop: 63242, Start Num: 11

Candidate Starts for TyrionL_87:

(6, 63739), (10, 63532), (Start: 11 @63502 has 227 MA's), (Start: 12 @63475 has 30 MA's), (13, 63418), (14, 63397), (15, 63358), (16, 63340), (17, 63319),

Gene: UAch1_88 Start: 63769, Stop: 63509, Start Num: 11

Candidate Starts for UAch1_88:

(4, 64048), (6, 64006), (10, 63799), (Start: 11 @63769 has 227 MA's), (Start: 12 @63742 has 30 MA's), (13, 63685), (14, 63664), (15, 63625), (16, 63607), (17, 63586),

Gene: UncleHowie_83 Start: 63106, Stop: 62846, Start Num: 11

Candidate Starts for UncleHowie_83:

(4, 63385), (6, 63343), (7, 63316), (10, 63136), (Start: 11 @63106 has 227 MA's), (Start: 12 @63079 has 30 MA's), (13, 63022), (14, 63001), (15, 62962), (16, 62944), (17, 62923),

Gene: Vaishali24_88 Start: 63848, Stop: 63615, Start Num: 12

Candidate Starts for Vaishali24_88:

(1, 64229), (2, 64211), (6, 64109), (10, 63905), (Start: 11 @63875 has 227 MA's), (Start: 12 @63848 has 30 MA's), (13, 63791), (14, 63770), (16, 63713), (17, 63692),

Gene: Vaticameos_84 Start: 61975, Stop: 61715, Start Num: 11

Candidate Starts for Vaticameos_84:

(4, 62254), (6, 62212), (10, 62005), (Start: 11 @61975 has 227 MA's), (Start: 12 @61948 has 30 MA's), (13, 61891), (14, 61870), (15, 61831), (16, 61813), (17, 61792),

Gene: Veritas_86 Start: 63556, Stop: 63323, Start Num: 12

Candidate Starts for Veritas_86:

(6, 63820), (10, 63613), (Start: 11 @63583 has 227 MA's), (Start: 12 @63556 has 30 MA's), (13, 63499), (14, 63478), (15, 63439), (16, 63421), (17, 63400),

Gene: Virapocalypse_88 Start: 63768, Stop: 63508, Start Num: 11

Candidate Starts for Virapocalypse_88:

(6, 64005), (10, 63798), (Start: 11 @63768 has 227 MA's), (Start: 12 @63741 has 30 MA's), (13, 63684), (14, 63663), (15, 63624), (16, 63606), (17, 63585),

Gene: Virgeve_85 Start: 63387, Stop: 63127, Start Num: 11

Candidate Starts for Virgeve_85:

(4, 63666), (6, 63624), (7, 63597), (10, 63417), (Start: 11 @63387 has 227 MA's), (Start: 12 @63360 has 30 MA's), (13, 63303), (14, 63282), (15, 63243), (16, 63225), (17, 63204),

Gene: Vista_86 Start: 63581, Stop: 63321, Start Num: 11

Candidate Starts for Vista_86:

(6, 63818), (10, 63611), (Start: 11 @63581 has 227 MA's), (Start: 12 @63554 has 30 MA's), (13, 63497), (14, 63476), (15, 63437), (16, 63419), (17, 63398),

Gene: Vivaldi_87 Start: 63847, Stop: 63587, Start Num: 11

Candidate Starts for Vivaldi_87:

(4, 64126), (6, 64084), (10, 63877), (Start: 11 @63847 has 227 MA's), (Start: 12 @63820 has 30 MA's), (13, 63763), (14, 63742), (15, 63703), (16, 63685), (17, 63664),

Gene: Vortex_85 Start: 63688, Stop: 63428, Start Num: 11

Candidate Starts for Vortex_85:

(4, 63967), (6, 63925), (7, 63898), (10, 63718), (Start: 11 @63688 has 227 MA's), (Start: 12 @63661 has 30 MA's), (13, 63604), (14, 63583), (15, 63544), (16, 63526), (17, 63505),

Gene: Wallhey_88 Start: 63689, Stop: 63429, Start Num: 11

Candidate Starts for Wallhey_88:

(6, 63926), (10, 63719), (Start: 11 @63689 has 227 MA's), (Start: 12 @63662 has 30 MA's), (13, 63605), (14, 63584), (15, 63545), (16, 63527), (17, 63506),

Gene: Waterdiva_88 Start: 63928, Stop: 63695, Start Num: 12

Candidate Starts for Waterdiva_88:

(4, 64234), (6, 64192), (7, 64165), (10, 63985), (Start: 11 @63955 has 227 MA's), (Start: 12 @63928 has 30 MA's), (13, 63871), (14, 63850), (15, 63811), (16, 63793), (17, 63772),

Gene: Weher20_84 Start: 64026, Stop: 63766, Start Num: 11

Candidate Starts for Weher20_84:

(4, 64305), (6, 64263), (7, 64236), (10, 64056), (Start: 11 @64026 has 227 MA's), (Start: 12 @63999 has 30 MA's), (13, 63942), (14, 63921), (15, 63882), (16, 63864), (17, 63843),

Gene: Windsor_87 Start: 63971, Stop: 63711, Start Num: 11

Candidate Starts for Windsor_87:

(6, 64208), (10, 64001), (Start: 11 @63971 has 227 MA's), (Start: 12 @63944 has 30 MA's), (13, 63887), (14, 63866), (15, 63827), (16, 63809), (17, 63788),

Gene: Xavier_86 Start: 63580, Stop: 63320, Start Num: 11

Candidate Starts for Xavier_86:

(4, 63859), (6, 63817), (10, 63610), (Start: 11 @63580 has 227 MA's), (Start: 12 @63553 has 30 MA's), (13, 63496), (14, 63475), (15, 63436), (16, 63418), (17, 63397),

Gene: Yoshand_88 Start: 63805, Stop: 63545, Start Num: 11

Candidate Starts for Yoshand_88:

(6, 64042), (10, 63835), (Start: 11 @63805 has 227 MA's), (Start: 12 @63778 has 30 MA's), (13, 63721), (14, 63700), (16, 63643), (17, 63622),

Gene: YouGoGlencoco_87 Start: 63695, Stop: 63435, Start Num: 11

Candidate Starts for YouGoGlencoco_87:

(4, 63974), (6, 63932), (7, 63905), (10, 63725), (Start: 11 @63695 has 227 MA's), (Start: 12 @63668 has 30 MA's), (13, 63611), (14, 63590), (15, 63551), (16, 63533), (17, 63512),

Gene: Zaider_88 Start: 64070, Stop: 63810, Start Num: 11

Candidate Starts for Zaider_88:

(6, 64307), (10, 64100), (Start: 11 @64070 has 227 MA's), (Start: 12 @64043 has 30 MA's), (13, 63986), (14, 63965), (15, 63926), (16, 63908), (17, 63887),

Gene: Zelda_87 Start: 63999, Stop: 63766, Start Num: 12

Candidate Starts for Zelda_87:

(4, 64305), (6, 64263), (7, 64236), (10, 64056), (Start: 11 @64026 has 227 MA's), (Start: 12 @63999 has 30 MA's), (13, 63942), (14, 63921), (15, 63882), (16, 63864), (17, 63843),

Gene: Zonia_87 Start: 64137, Stop: 63877, Start Num: 11

Candidate Starts for Zonia_87:

(4, 64416), (6, 64374), (7, 64347), (10, 64167), (Start: 11 @64137 has 227 MA's), (Start: 12 @64110 has 30 MA's), (13, 64053), (14, 64032), (15, 63993), (16, 63975), (17, 63954),