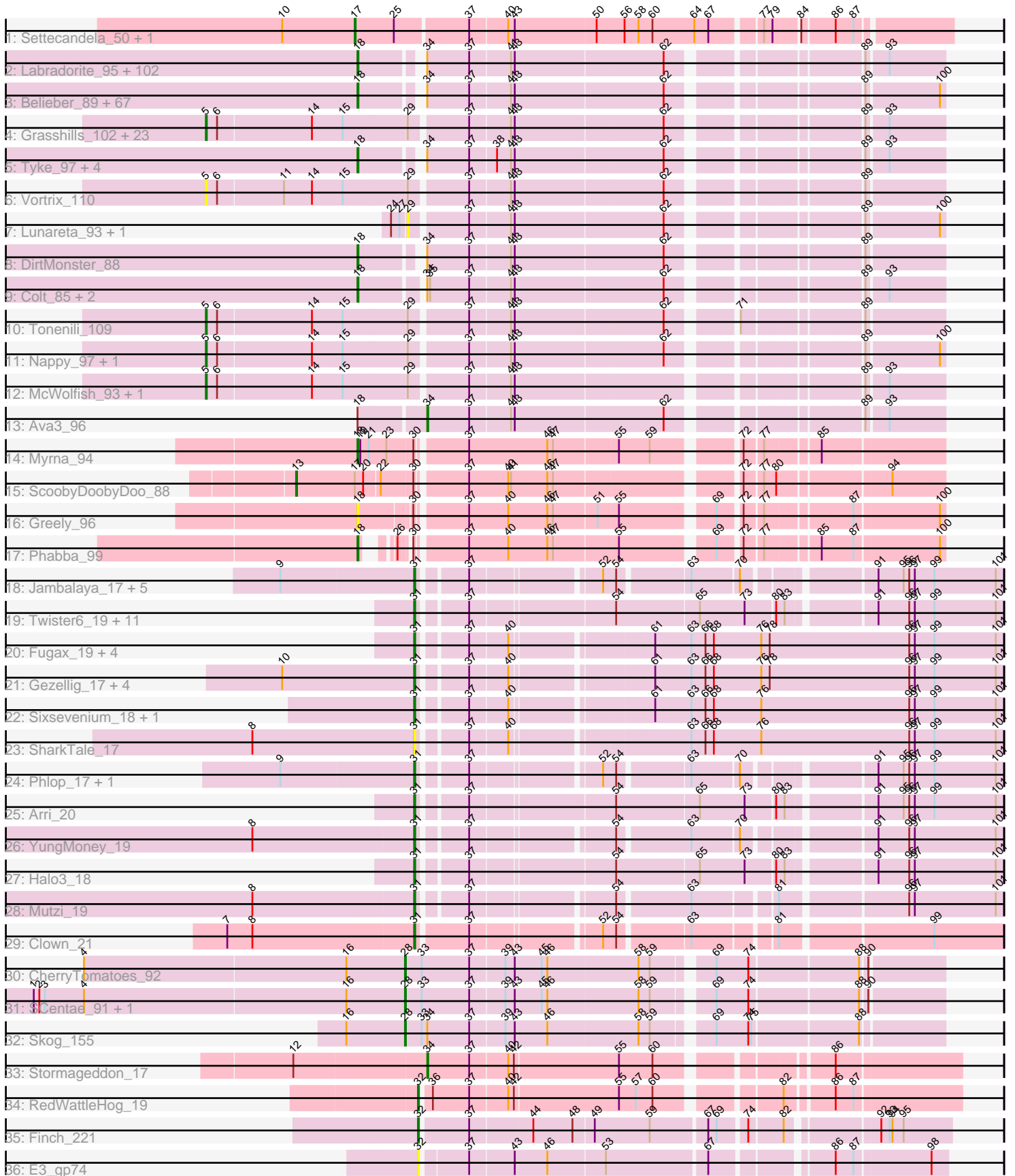


# Pham 307992



Note: Tracks are now grouped by subcluster and scaled. Switching in subcluster is indicated by changes in track color. Track scale is now set by default to display the region 30 bp upstream of start 1 to 30 bp downstream of the last possible start. If this default region is judged to be packed too tightly with annotated starts, the track will be further scaled to only show that region of the ORF with annotated starts. This action will be indicated by adding "Zoomed" to the title. For starts, yellow indicates the location of called starts comprised solely of Glimmer/GeneMark auto-annotations, green indicates the location of called starts with at least 1 manual gene annotation.

## Pham 307992 Report

This analysis was run 06/27/26 on database version 652.

Pham number 307992 has 265 members, 43 are drafts.

Phages represented in each track:

- Track 1 : Settecandela\_50, Phrappuccino\_50
- Track 2 : Labradorite\_95, Roots515\_94, ChaylaJr\_90, FrayBell\_101, ErnieJ\_91, Flabslab\_90, Moby\_86, FoxtrotP1\_95, BackyardAgain\_92, BananaFence\_94, Lethe\_94, BeanWater\_87, Tainan\_100, Caravan\_90, Melpomini\_89, ScottMcG\_92, Khaleesi\_94, Bowman\_93, Megamind\_94, Phox\_92, Catera\_92, Primadonna\_89, MikeLiesIn\_96, LinStu\_95, Ewok\_96, ParkTD\_96, SoilZilla\_91, Asterius\_98, Napoleon13\_91, TinyTim\_95, OrediggerDelux\_93, ShiaLabeouf\_95, LolaVinca\_97, BadAgartude\_92, Zalkecks\_96, Issimir\_94, Kamryn\_95, Naval22\_103, EmToTheThree\_98, Domi\_89, YemiJoy2021\_96, Moiqah\_86, FudgeTart\_95, ET08\_84, Delylah\_98, Gizmo\_99, Pier\_99, Bonray\_95, Erdmann\_96, NedWong\_96, Willis\_96, Dietrick\_87, Shrimp\_95, Darko\_95, QBert\_89, EasyJones\_98, Rocha\_94, Turret\_90, Shelob\_97, HyRo\_87, Cleatunium\_90, Blackbrain\_90, Norm\_96, Loanshark\_95, Stubby\_88, Spud\_95, Lukilu\_86, Zeenon\_97, Janiyra\_97, Cactojaque\_90, Drazdys\_95, LordLeafolot\_101, Fongie\_93, Shifa\_84, Wally\_94, Jessibeth14\_94, Pleione\_98, StephanieG\_94, ZygoTaiga\_94, Lee7\_93, Capablanca\_97, Matsumoto\_94, Rabinovish\_92, Dessert\_93, Bezza\_84, Delilah\_95, Daffodil\_100, Morizzled23\_95, SrishMeg2525\_94, Dandelion\_102, Alice\_88, MoMoMixon\_96, Maturis\_93, DeejaClivia\_84, Astraea\_93, ChickenPhender\_91, Pinkcreek\_86, RoMag\_90, Mangeria\_95, Yucca\_95, InterFolia\_104, PharkleMinkus\_100, Rizal\_92
- Track 3 : Belieber\_89, Chargie21\_91, Atlantean\_94, StubbySaigey\_97, Pupusa\_100, CindyLou\_96, Naija\_94, Sebata\_96, Iota\_89, Ngannou\_91, Shnickers\_95, BobaPhatt\_89, JPickles\_93, Bangla1971\_96, ValleyTerrace\_95, Fixie\_90, Essence\_92, Halldule\_88, McGee\_96, Substance289\_92, Audrick\_97, Babyland\_95, Sauce\_95, Amataga\_95, Guwapp\_94, InigoMontoya\_96, ArcherS7\_94, Blackdragon\_89, LRRHood\_89, Ronan\_88, Ablatia\_93, JulietS\_88, Derek\_95, Jemmno\_95, Cali\_90, Duckfeet\_86, Jedediah\_98, Ghost\_94, EmmaElysia\_94, Rahel\_94, Basquiat\_91, YoungMoneyMata\_95, Spec\_90, Kboogie\_98, JustHall\_91, Trinitium\_91, Quasimodo\_95, Jaygup\_95, Phusco\_95, Grungle\_82, GlutenPhree\_96, SilverDipper\_96, Shaqnato\_87, Yassified\_91, Adlitam\_95, Gamgam\_95, Koguma\_91, Sprinklers\_90, Phlegm\_97, SmallFry\_95, Chomp\_94, Pivoine\_94, Ading\_95, CharlieB\_90, Patter\_95, Momo\_94, Fludd\_95, Latch\_95
- Track 4 : Grasshills\_102, Salacia\_99, Gabriel\_97, EggyFarm\_103, NuevoMundo\_101, Concombre\_102, Bigswole\_100, IkeLoa\_89, Nidhogg\_96, DTDevon\_96, NoodleTree\_103, Demodog\_102, DrPhinkDaddy\_94, SVoro\_93, JayJay\_101, Tortoise16\_93, LookingGlass\_96, Izajani\_95, Mikro\_93, Maby2021\_95, BigCity\_103, Bread\_95, Breeniome\_95, Jezreel\_95

- Track 5 : Tyke\_97, Bipolarisk\_94, Bxz1\_93, Pio\_99, Burrough\_95
- Track 6 : Vortrix\_110
- Track 7 : Lunareta\_93, Montpel\_93
- Track 8 : DirtMonster\_88
- Track 9 : Colt\_85, Cane17\_84, Blubba\_84
- Track 10 : Tonenili\_109
- Track 11 : Nappy\_97, LifeSavor\_94
- Track 12 : McWolfish\_93, PurduePete\_95
- Track 13 : Ava3\_96
- Track 14 : Myrna\_94
- Track 15 : ScoobyDoobyDoo\_88
- Track 16 : Greely\_96
- Track 17 : Phabba\_99
- Track 18 : Jambalaya\_17, TillyBobJoe\_17, Portcullis\_17, Shinji\_17, Savbucketdawg\_17, JohnPork\_17
- Track 19 : Twister6\_19, Danyall\_19, SmokingBunny\_17, RogerDodger\_20, CoveyB\_19, Nubi\_17, Togo\_17, Evamon\_17, CherryCola\_20, Salvador\_17, VanDeWege\_20, Valary\_20
- Track 20 : Fugax\_19, PinkCoffee\_19, KimmyK\_19, ClamChowder\_19, Barb\_19
- Track 21 : Gezellig\_17, Sendy\_18, Wizard\_17, Egi03\_17, Fireball\_18
- Track 22 : Sixsevenium\_18, Bakery\_18
- Track 23 : SharkTale\_17
- Track 24 : Phlop\_17, PullumCavea\_17
- Track 25 : Arri\_20
- Track 26 : YungMoney\_19
- Track 27 : Halo3\_18
- Track 28 : Mutzi\_19
- Track 29 : Clown\_21
- Track 30 : CherryTomatoes\_92
- Track 31 : SCentae\_91, Pupper\_92
- Track 32 : Skog\_155
- Track 33 : Stormageddon\_17
- Track 34 : RedWattleHog\_19
- Track 35 : Finch\_221
- Track 36 : E3\_gp74

***Summary of Final Annotations (See graph section above for start numbers):***

The start number called the most often in the published annotations is 18, it was called in 155 of the 222 non-draft genes in the pham.

Genes that call this "Most Annotated" start:

- Ablatia\_93, Ading\_95, Adlitam\_95, Alice\_88, Amataga\_95, ArcherS7\_94, Asterius\_98, Astraea\_93, Atlantean\_94, Audrick\_97, Babyland\_95, BackyardAgain\_92, BadAgartude\_92, BananaFence\_94, Bangla1971\_96, Basquiat\_91, BeanWater\_87, Belieber\_89, Bezza\_84, Bipolarisk\_94, Blackbrain\_90, Blackdragon\_89, Blubba\_84, BobaPhatt\_89, Bonray\_95, Bowman\_93, Burrough\_95, Bxz1\_93, Cactojaque\_90, Cali\_90, Cane17\_84, Capablanca\_97, Caravan\_90, Catera\_92, Chargie21\_91, CharlieB\_90, ChaylaJr\_90, ChickenPhender\_91, Chomp\_94, CindyLou\_96, Cleatunium\_90, Colt\_85, Daffodil\_100, Dandelion\_102,

Darko\_95, DeejaClivia\_84, Delilah\_95, Delylah\_98, Derek\_95, Dessert\_93, Dietrick\_87, DirtMonster\_88, Domi\_89, Drazdys\_95, Duckfeet\_86, ET08\_84, EasyJones\_98, EmToTheThree\_98, EmmaElysia\_94, Erdmann\_96, ErnieJ\_91, Essence\_92, Ewok\_96, Fixie\_90, Flabslab\_90, Fludd\_95, Fongie\_93, FoxtrotP1\_95, FrayBell\_101, FudgeTart\_95, Gamgam\_95, Ghost\_94, Gizmo\_99, GlutenPhree\_96, Greely\_96, Grungle\_82, Guwapp\_94, Halldule\_88, HyRo\_87, InigoMontoya\_96, InterFolia\_104, Iota\_89, Issimir\_94, JPickles\_93, Janiyra\_97, Jaygup\_95, Jedediah\_98, Jemmno\_95, Jessibeth14\_94, JulietS\_88, JustHall\_91, Kamryn\_95, Kboogie\_98, Khaleesi\_94, Koguma\_91, LRRHood\_89, Labradorite\_95, Latch\_95, Lee7\_93, Lethe\_94, LinStu\_95, Loanshark\_95, LolaVinca\_97, LordLeafolot\_101, Lukilu\_86, Mangeria\_95, Matsumoto\_94, Maturis\_93, McGee\_96, Megamind\_94, Melpomini\_89, MikeLiesIn\_96, MoMoMixon\_96, Moby\_86, Moiqah\_86, Momo\_94, Morizzled23\_95, Myrna\_94, Naija\_94, Napoleon13\_91, Naval22\_103, NedWong\_96, Ngannou\_91, Norm\_96, OrediggerDelux\_93, ParkTD\_96, Patter\_95, Phabba\_99, PharkleMinkus\_100, Phlegm\_97, Phox\_92, Phusco\_95, Pier\_99, Pinkcreek\_86, Pio\_99, Pivoine\_94, Pleione\_98, Primadonna\_89, Pupusa\_100, QBert\_89, Quasimodo\_95, Rabinovich\_92, Rahel\_94, Rizal\_92, RoMag\_90, Rocha\_94, Ronan\_88, Roots515\_94, Sauce\_95, ScottMcG\_92, Sebata\_96, Shaqnato\_87, Shelob\_97, ShiaLabeouf\_95, Shifa\_84, Shnickers\_95, Shrimp\_95, SilverDipper\_96, SmallFry\_95, SoilZilla\_91, Spec\_90, Sprinklers\_90, Spud\_95, SrishMeg2525\_94, StephanieG\_94, StubbySaigey\_97, Stubby\_88, Substance289\_92, Tainan\_100, TinyTim\_95, Trinitium\_91, Turret\_90, Tyke\_97, ValleyTerrace\_95, Wally\_94, Willis\_96, Yassified\_91, YemiJoy2021\_96, YoungMoneyMata\_95, Yucca\_95, Zalkecks\_96, Zeenon\_97, ZygoTaiga\_94,

Genes that have the "Most Annotated" start but do not call it:

- Ava3\_96,

Genes that do not have the "Most Annotated" start:

- Arri\_20, Bakery\_18, Barb\_19, BigCity\_103, Bigswole\_100, Bread\_95, Breeniome\_95, CherryCola\_20, CherryTomatoes\_92, ClamChowder\_19, Clown\_21, Concombre\_102, CoveyB\_19, DTDevon\_96, Danyall\_19, Demodog\_102, DrPhinkDaddy\_94, E3\_gp74, EggyFarm\_103, Egi03\_17, Evamon\_17, Finch\_221, Fireball\_18, Fugax\_19, Gabriel\_97, Gezellig\_17, Grasshills\_102, Halo3\_18, IkeLoa\_89, Izajani\_95, Jambalaya\_17, JayJay\_101, Jezreel\_95, JohnPork\_17, KimmyK\_19, LifeSavor\_94, LookingGlass\_96, Lunareta\_93, Maby2021\_95, McWolfish\_93, Mikro\_93, Montpel\_93, Mutzi\_19, Nappy\_97, Nidhogg\_96, NoodleTree\_103, Nubi\_17, NuevoMundo\_101, Phlop\_17, Phrappuccino\_50, PinkCoffee\_19, Portcullis\_17, PullumCavea\_17, Pupper\_92, PurduePete\_95, RedWattleHog\_19, RogerDodger\_20, SCentae\_91, SVoro\_93, Salacia\_99, Salvador\_17, Savbucketdawg\_17, ScoobyDoobyDoo\_88, Sendy\_18, Settecandela\_50, SharkTale\_17, Shinji\_17, Sixsevenium\_18, Skog\_155, SmokingBunny\_17, Stormageddon\_17, TillyBobJoe\_17, Togo\_17, Tonenili\_109, Tortoise16\_93, Twister6\_19, Valary\_20, VanDeWege\_20, Vortrix\_110, Wizard\_17, YungMoney\_19,

### Summary by start number:

Start 5:

- Found in 30 of 265 ( 11.3% ) of genes in pham
- Manual Annotations of this start: 23 of 222
- Called 100.0% of time when present

- Phage (with cluster) where this start called: BigCity\_103 (C1), Bigswole\_100 (C1), Bread\_95 (C1), Breeniome\_95 (C1), Concombre\_102 (C1), DTDevon\_96 (C1), Demodog\_102 (C1), DrPhinkDaddy\_94 (C1), EggyFarm\_103 (C1), Gabriel\_97 (C1), Grasshills\_102 (C1), IkeLoa\_89 (C1), Izajani\_95 (C1), JayJay\_101 (C1), Jezreel\_95 (C1), LifeSavor\_94 (C1), LookingGlass\_96 (C1), Maby2021\_95 (C1), McWolfish\_93 (C1), Mikro\_93 (C1), Nappy\_97 (C1), Nidhogg\_96 (C1), NoodleTree\_103 (C1), NuevoMundo\_101 (C1), PurduePete\_95 (C1), SVoro\_93 (C1), Salacia\_99 (C1), Tonenili\_109 (C1), Tortoise16\_93 (C1), Vortrix\_110 (C1),

#### Start 13:

- Found in 1 of 265 ( 0.4% ) of genes in pham
- Manual Annotations of this start: 1 of 222
- Called 100.0% of time when present
- Phage (with cluster) where this start called: ScoobyDoobyDoo\_88 (C2),

#### Start 17:

- Found in 3 of 265 ( 1.1% ) of genes in pham
- Manual Annotations of this start: 2 of 222
- Called 66.7% of time when present
- Phage (with cluster) where this start called: Phrappuccino\_50 (AA), Settecandela\_50 (AA),

#### Start 18:

- Found in 184 of 265 ( 69.4% ) of genes in pham
- Manual Annotations of this start: 155 of 222
- Called 99.5% of time when present
- Phage (with cluster) where this start called: Ablatia\_93 (C1), Ading\_95 (C1), Adlitam\_95 (C1), Alice\_88 (C1), Amataga\_95 (C1), ArcherS7\_94 (C1), Asterius\_98 (C1), Astraea\_93 (C1), Atlantean\_94 (C1), Audrick\_97 (C1), Babyland\_95 (C1), BackyardAgain\_92 (C1), BadAgartude\_92 (C1), BananaFence\_94 (C1), Bangla1971\_96 (C1), Basquiat\_91 (C1), BeanWater\_87 (C1), Belieber\_89 (C1), Bezza\_84 (C1), Bipolarisk\_94 (C1), Blackbrain\_90 (C1), Blackdragon\_89 (C1), Blubba\_84 (C1), BobaPhatt\_89 (C1), Bonray\_95 (C1), Bowman\_93 (C1), Burrough\_95 (C1), Bxz1\_93 (C1), Cactojaque\_90 (C1), Cali\_90 (C1), Cane17\_84 (C1), Capablanca\_97 (C1), Caravan\_90 (C1), Catera\_92 (C1), Chargie21\_91 (C1), CharlieB\_90 (C1), ChaylaJr\_90 (C1), ChickenPhender\_91 (C1), Chomp\_94 (C1), CindyLou\_96 (C1), Cleatunium\_90 (C1), Colt\_85 (C1), Daffodil\_100 (C1), Dandelion\_102 (C1), Darko\_95 (C1), DeejaClivia\_84 (C1), Delilah\_95 (C1), Delylah\_98 (C1), Derek\_95 (C1), Dessert\_93 (C1), Dietrick\_87 (C1), DirtMonster\_88 (C1), Domi\_89 (C1), Drazdys\_95 (C1), Duckfeet\_86 (C1), ET08\_84 (C1), EasyJones\_98 (C1), EmToTheThree\_98 (C1), EmmaElysia\_94 (C1), Erdmann\_96 (C1), ErnieJ\_91 (C1), Essence\_92 (C1), Ewok\_96 (C1), Fixie\_90 (C1), Flabslab\_90 (C1), Fludd\_95 (C1), Fongie\_93 (C1), FoxtrotP1\_95 (C1), FrayBell\_101 (C1), FudgeTart\_95 (C1), Gamgam\_95 (C1), Ghost\_94 (C1), Gizmo\_99 (C1), GlutenPhree\_96 (C1), Greely\_96 (C2), Grungle\_82 (C1), Guwapp\_94 (C1), Haldule\_88 (C1), HyRo\_87 (C1), InigoMontoya\_96 (C1), InterFolia\_104 (C1), Iota\_89 (C1), Issimir\_94 (C1), JPickles\_93 (C1), Janiyra\_97 (C1), Jaygup\_95 (C1), Jedediah\_98 (C1), Jemmno\_95 (C1), Jessibeth14\_94 (C1), JulietS\_88 (C1), JustHall\_91 (C1), Kamryn\_95 (C1), Kboogie\_98 (C1), Khaleesi\_94 (C1), Koguma\_91 (C1), LRRHood\_89 (C1), Labradorite\_95 (C1), Latch\_95 (C1), Lee7\_93 (C1), Lethe\_94 (C1), LinStu\_95 (C1), Loanshark\_95 (C1), LolaVinca\_97 (C1), LordLeafolot\_101 (C1), Lukilu\_86 (C1), Mangeria\_95 (C1), Matsumoto\_94 (C1), Maturis\_93 (C1), McGee\_96 (C1), Megamind\_94 (C1), Melpomini\_89 (C1),

MikeLiesIn\_96 (C1), MoMoMixon\_96 (C1), Moby\_86 (C1), Moiqah\_86 (C1), Momo\_94 (C1), Morizzled23\_95 (C1), Myrna\_94 (C2), Naija\_94 (C1), Napoleon13\_91 (C1), Naval22\_103 (C1), NedWong\_96 (C1), Ngannou\_91 (C1), Norm\_96 (C1), OrediggerDelux\_93 (C1), ParkTD\_96 (C1), Patter\_95 (C1), Phabba\_99 (C2), PharkleMinkus\_100 (C1), Phlegm\_97 (C1), Phox\_92 (C1), Phusco\_95 (C1), Pier\_99 (C1), Pinkcreek\_86 (C1), Pio\_99 (C1), Pivoine\_94 (C1), Pleione\_98 (C1), Primadonna\_89 (C1), Pupusa\_100 (C1), QBert\_89 (C1), Quasimodo\_95 (C1), Rabinovish\_92 (C1), Rahel\_94 (C1), Rizal\_92 (C1), RoMag\_90 (C1), Rocha\_94 (C1), Ronan\_88 (C1), Roots515\_94 (C1), Sauce\_95 (C1), ScottMcG\_92 (C1), Sebata\_96 (C1), Shaqnato\_87 (C1), Shelob\_97 (C1), ShiaLabeouf\_95 (C1), Shifa\_84 (C1), Shnickers\_95 (C1), Shrimp\_95 (C1), SilverDipper\_96 (C1), SmallFry\_95 (C1), SoilZilla\_91 (C1), Spec\_90 (C1), Sprinklers\_90 (C1), Spud\_95 (C1), SrishMeg2525\_94 (C1), StephanieG\_94 (C1), StubbySaigey\_97 (C1), Stubby\_88 (C1), Substance289\_92 (C1), Tainan\_100 (C1), TinyTim\_95 (C1), Trinitium\_91 (C1), Turret\_90 (C1), Tyke\_97 (C1), ValleyTerrace\_95 (C1), Wally\_94 (C1), Willis\_96 (C1), Yassified\_91 (C1), YemiJoy2021\_96 (C1), YoungMoneyMata\_95 (C1), Yucca\_95 (C1), Zalkecks\_96 (C1), Zeenon\_97 (C1), ZygoTaiga\_94 (C1),

#### Start 28:

- Found in 4 of 265 ( 1.5% ) of genes in pham
- Manual Annotations of this start: 4 of 222
- Called 100.0% of time when present
- Phage (with cluster) where this start called: CherryTomatoes\_92 (DO), Pupper\_92 (DO), SCentae\_91 (DO), Skog\_155 (DO),

#### Start 29:

- Found in 32 of 265 ( 12.1% ) of genes in pham
- No Manual Annotations of this start.
- Called 6.2% of time when present
- Phage (with cluster) where this start called: Lunareta\_93 (C1), Montpel\_93 (C1),

#### Start 31:

- Found in 38 of 265 ( 14.3% ) of genes in pham
- Manual Annotations of this start: 33 of 222
- Called 100.0% of time when present
- Phage (with cluster) where this start called: Arri\_20 (DC1), Bakery\_18 (DC1), Barb\_19 (DC1), CherryCola\_20 (DC1), ClamChowder\_19 (DC1), Clown\_21 (DC2), CoveyB\_19 (DC1), Danyall\_19 (DC1), Egi03\_17 (DC1), Evamon\_17 (DC1), Fireball\_18 (DC1), Fugax\_19 (DC1), Gezellig\_17 (DC1), Halo3\_18 (DC1), Jambalaya\_17 (DC1), JohnPork\_17 (DC1), KimmyK\_19 (DC1), Mutzi\_19 (DC1), Nubi\_17 (DC1), Phlop\_17 (DC1), PinkCoffee\_19 (DC1), Portcullis\_17 (DC1), PullumCavea\_17 (DC1), RogerDodger\_20 (DC1), Salvador\_17 (DC1), Savbucketdawg\_17 (DC1), Sendy\_18 (DC1), SharkTale\_17 (DC1), Shinji\_17 (DC1), Sixsevenium\_18 (DC1), SmokingBunny\_17 (DC1), TillyBobJoe\_17 (DC1), Togo\_17 (DC1), Twister6\_19 (DC1), Valary\_20 (DC1), VanDeWege\_20 (DC1), Wizard\_17 (DC1), YungMoney\_19 (DC1),

#### Start 32:

- Found in 3 of 265 ( 1.1% ) of genes in pham
- Manual Annotations of this start: 2 of 222
- Called 100.0% of time when present
- Phage (with cluster) where this start called: E3\_gp74 (singleton), Finch\_221 (singleton), RedWattleHog\_19 (DX),

Start 34:

- Found in 183 of 265 ( 69.1% ) of genes in pham
- Manual Annotations of this start: 2 of 222
- Called 1.1% of time when present
- Phage (with cluster) where this start called: Ava3\_96 (C1), Stormageddon\_17 (DX),

### **Summary by clusters:**

There are 8 clusters represented in this pham: AA, DO, singleton, DX, C2, C1, DC2, DC1,

Info for manual annotations of cluster AA:

- Start number 17 was manually annotated 2 times for cluster AA.

Info for manual annotations of cluster C1:

- Start number 5 was manually annotated 23 times for cluster C1.
- Start number 18 was manually annotated 153 times for cluster C1.
- Start number 34 was manually annotated 1 time for cluster C1.

Info for manual annotations of cluster C2:

- Start number 13 was manually annotated 1 time for cluster C2.
- Start number 18 was manually annotated 2 times for cluster C2.

Info for manual annotations of cluster DC1:

- Start number 31 was manually annotated 32 times for cluster DC1.

Info for manual annotations of cluster DC2:

- Start number 31 was manually annotated 1 time for cluster DC2.

Info for manual annotations of cluster DO:

- Start number 28 was manually annotated 4 times for cluster DO.

Info for manual annotations of cluster DX:

- Start number 32 was manually annotated 1 time for cluster DX.
- Start number 34 was manually annotated 1 time for cluster DX.

### **Gene Information:**

Gene: Ablatia\_93 Start: 39076, Stop: 39627, Start Num: 18

Candidate Starts for Ablatia\_93:

(Start: 18 @39076 has 155 MA's), (Start: 34 @39130 has 2 MA's), (37, 39175), (41, 39217), (43, 39220), (62, 39373), (89, 39547), (100, 39622),

Gene: Ading\_95 Start: 40345, Stop: 40896, Start Num: 18

Candidate Starts for Ading\_95:

(Start: 18 @40345 has 155 MA's), (Start: 34 @40399 has 2 MA's), (37, 40444), (41, 40486), (43, 40489), (62, 40642), (89, 40816), (100, 40891),

Gene: Adlitam\_95 Start: 40362, Stop: 40913, Start Num: 18

Candidate Starts for Adlitam\_95:

(Start: 18 @40362 has 155 MA's), (Start: 34 @40416 has 2 MA's), (37, 40461), (41, 40503), (43, 40506), (62, 40659), (89, 40833), (100, 40908),

Gene: Alice\_88 Start: 38224, Stop: 38775, Start Num: 18

Candidate Starts for Alice\_88:

(Start: 18 @38224 has 155 MA's), (Start: 34 @38278 has 2 MA's), (37, 38323), (41, 38365), (43, 38368), (62, 38521), (89, 38695), (93, 38716),

Gene: Amataga\_95 Start: 39607, Stop: 40158, Start Num: 18

Candidate Starts for Amataga\_95:

(Start: 18 @39607 has 155 MA's), (Start: 34 @39661 has 2 MA's), (37, 39706), (41, 39748), (43, 39751), (62, 39904), (89, 40078), (100, 40153),

Gene: ArcherS7\_94 Start: 39925, Stop: 40476, Start Num: 18

Candidate Starts for ArcherS7\_94:

(Start: 18 @39925 has 155 MA's), (Start: 34 @39979 has 2 MA's), (37, 40024), (41, 40066), (43, 40069), (62, 40222), (89, 40396), (100, 40471),

Gene: Arri\_20 Start: 11722, Stop: 12300, Start Num: 31

Candidate Starts for Arri\_20:

(Start: 31 @11722 has 33 MA's), (37, 11767), (54, 11911), (65, 11998), (73, 12046), (80, 12076), (83, 12085), (91, 12166), (95, 12193), (96, 12199), (97, 12205), (99, 12226), (101, 12292),

Gene: Asterius\_98 Start: 39910, Stop: 40461, Start Num: 18

Candidate Starts for Asterius\_98:

(Start: 18 @39910 has 155 MA's), (Start: 34 @39964 has 2 MA's), (37, 40009), (41, 40051), (43, 40054), (62, 40207), (89, 40381), (93, 40402),

Gene: Astraea\_93 Start: 39786, Stop: 40337, Start Num: 18

Candidate Starts for Astraea\_93:

(Start: 18 @39786 has 155 MA's), (Start: 34 @39840 has 2 MA's), (37, 39885), (41, 39927), (43, 39930), (62, 40083), (89, 40257), (93, 40278),

Gene: Atlantean\_94 Start: 39607, Stop: 40158, Start Num: 18

Candidate Starts for Atlantean\_94:

(Start: 18 @39607 has 155 MA's), (Start: 34 @39661 has 2 MA's), (37, 39706), (41, 39748), (43, 39751), (62, 39904), (89, 40078), (100, 40153),

Gene: Audrick\_97 Start: 39586, Stop: 40137, Start Num: 18

Candidate Starts for Audrick\_97:

(Start: 18 @39586 has 155 MA's), (Start: 34 @39640 has 2 MA's), (37, 39685), (41, 39727), (43, 39730), (62, 39883), (89, 40057), (100, 40132),

Gene: Ava3\_96 Start: 40337, Stop: 40834, Start Num: 34

Candidate Starts for Ava3\_96:

(Start: 18 @40283 has 155 MA's), (Start: 34 @40337 has 2 MA's), (37, 40382), (41, 40424), (43, 40427), (62, 40580), (89, 40754), (93, 40775),

Gene: Babyland\_95 Start: 39046, Stop: 39597, Start Num: 18

Candidate Starts for Babyland\_95:

(Start: 18 @39046 has 155 MA's), (Start: 34 @39100 has 2 MA's), (37, 39145), (41, 39187), (43, 39190), (62, 39343), (89, 39517), (100, 39592),

Gene: BackyardAgain\_92 Start: 39103, Stop: 39654, Start Num: 18

Candidate Starts for BackyardAgain\_92:

(Start: 18 @39103 has 155 MA's), (Start: 34 @39157 has 2 MA's), (37, 39202), (41, 39244), (43, 39247), (62, 39400), (89, 39574), (93, 39595),

Gene: BadAgartude\_92 Start: 41437, Stop: 41988, Start Num: 18

Candidate Starts for BadAgartude\_92:

(Start: 18 @41437 has 155 MA's), (Start: 34 @41491 has 2 MA's), (37, 41536), (41, 41578), (43, 41581), (62, 41734), (89, 41908), (93, 41929),

Gene: Bakery\_18 Start: 10908, Stop: 11501, Start Num: 31

Candidate Starts for Bakery\_18:

(Start: 31 @10908 has 33 MA's), (37, 10953), (40, 10992), (61, 11127), (63, 11166), (66, 11181), (68, 11190), (76, 11241), (96, 11400), (97, 11406), (99, 11427), (101, 11493),

Gene: BananaFence\_94 Start: 40148, Stop: 40699, Start Num: 18

Candidate Starts for BananaFence\_94:

(Start: 18 @40148 has 155 MA's), (Start: 34 @40202 has 2 MA's), (37, 40247), (41, 40289), (43, 40292), (62, 40445), (89, 40619), (93, 40640),

Gene: Bangla1971\_96 Start: 40055, Stop: 40606, Start Num: 18

Candidate Starts for Bangla1971\_96:

(Start: 18 @40055 has 155 MA's), (Start: 34 @40109 has 2 MA's), (37, 40154), (41, 40196), (43, 40199), (62, 40352), (89, 40526), (100, 40601),

Gene: Barb\_19 Start: 11685, Stop: 12278, Start Num: 31

Candidate Starts for Barb\_19:

(Start: 31 @11685 has 33 MA's), (37, 11730), (40, 11769), (61, 11904), (63, 11943), (66, 11958), (68, 11967), (76, 12018), (78, 12027), (96, 12177), (97, 12183), (99, 12204), (101, 12270),

Gene: Basquiat\_91 Start: 38600, Stop: 39151, Start Num: 18

Candidate Starts for Basquiat\_91:

(Start: 18 @38600 has 155 MA's), (Start: 34 @38654 has 2 MA's), (37, 38699), (41, 38741), (43, 38744), (62, 38897), (89, 39071), (100, 39146),

Gene: BeanWater\_87 Start: 39999, Stop: 40550, Start Num: 18

Candidate Starts for BeanWater\_87:

(Start: 18 @39999 has 155 MA's), (Start: 34 @40053 has 2 MA's), (37, 40098), (41, 40140), (43, 40143), (62, 40296), (89, 40470), (93, 40491),

Gene: Belieber\_89 Start: 38959, Stop: 39510, Start Num: 18

Candidate Starts for Belieber\_89:

(Start: 18 @38959 has 155 MA's), (Start: 34 @39013 has 2 MA's), (37, 39058), (41, 39100), (43, 39103), (62, 39256), (89, 39430), (100, 39505),

Gene: Bezza\_84 Start: 38915, Stop: 39466, Start Num: 18

Candidate Starts for Bezza\_84:

(Start: 18 @38915 has 155 MA's), (Start: 34 @38969 has 2 MA's), (37, 39014), (41, 39056), (43, 39059), (62, 39212), (89, 39386), (93, 39407),

Gene: BigCity\_103 Start: 42658, Stop: 43377, Start Num: 5

Candidate Starts for BigCity\_103:

(Start: 5 @42658 has 23 MA's), (6, 42670), (14, 42769), (15, 42802), (29, 42868), (37, 42925), (41, 42967), (43, 42970), (62, 43123), (89, 43297), (93, 43318),

Gene: Bigswole\_100 Start: 43006, Stop: 43725, Start Num: 5

Candidate Starts for Bigswole\_100:

(Start: 5 @43006 has 23 MA's), (6, 43018), (14, 43117), (15, 43150), (29, 43216), (37, 43273), (41, 43315), (43, 43318), (62, 43471), (89, 43645), (93, 43666),

Gene: Bipolarisk\_94 Start: 40313, Stop: 40864, Start Num: 18

Candidate Starts for Bipolarisk\_94:

(Start: 18 @40313 has 155 MA's), (Start: 34 @40367 has 2 MA's), (37, 40412), (38, 40439), (41, 40454), (43, 40457), (62, 40610), (89, 40784), (93, 40805),

Gene: Blackbrain\_90 Start: 38417, Stop: 38968, Start Num: 18

Candidate Starts for Blackbrain\_90:

(Start: 18 @38417 has 155 MA's), (Start: 34 @38471 has 2 MA's), (37, 38516), (41, 38558), (43, 38561), (62, 38714), (89, 38888), (93, 38909),

Gene: Blackdragon\_89 Start: 39131, Stop: 39682, Start Num: 18

Candidate Starts for Blackdragon\_89:

(Start: 18 @39131 has 155 MA's), (Start: 34 @39185 has 2 MA's), (37, 39230), (41, 39272), (43, 39275), (62, 39428), (89, 39602), (100, 39677),

Gene: Blubba\_84 Start: 38958, Stop: 39512, Start Num: 18

Candidate Starts for Blubba\_84:

(Start: 18 @38958 has 155 MA's), (Start: 34 @39015 has 2 MA's), (35, 39018), (37, 39060), (41, 39102), (43, 39105), (62, 39258), (89, 39432), (93, 39453),

Gene: BobaPhatt\_89 Start: 38240, Stop: 38791, Start Num: 18

Candidate Starts for BobaPhatt\_89:

(Start: 18 @38240 has 155 MA's), (Start: 34 @38294 has 2 MA's), (37, 38339), (41, 38381), (43, 38384), (62, 38537), (89, 38711), (100, 38786),

Gene: Bonray\_95 Start: 40709, Stop: 41260, Start Num: 18

Candidate Starts for Bonray\_95:

(Start: 18 @40709 has 155 MA's), (Start: 34 @40763 has 2 MA's), (37, 40808), (41, 40850), (43, 40853), (62, 41006), (89, 41180), (93, 41201),

Gene: Bowman\_93 Start: 40901, Stop: 41452, Start Num: 18

Candidate Starts for Bowman\_93:

(Start: 18 @40901 has 155 MA's), (Start: 34 @40955 has 2 MA's), (37, 41000), (41, 41042), (43, 41045), (62, 41198), (89, 41372), (93, 41393),

Gene: Bread\_95 Start: 40204, Stop: 40923, Start Num: 5

Candidate Starts for Bread\_95:

(Start: 5 @40204 has 23 MA's), (6, 40216), (14, 40315), (15, 40348), (29, 40414), (37, 40471), (41, 40513), (43, 40516), (62, 40669), (89, 40843), (93, 40864),

Gene: Breeniome\_95 Start: 39427, Stop: 40146, Start Num: 5

Candidate Starts for Breeniome\_95:

(Start: 5 @39427 has 23 MA's), (6, 39439), (14, 39538), (15, 39571), (29, 39637), (37, 39694), (41, 39736), (43, 39739), (62, 39892), (89, 40066), (93, 40087),

Gene: Burrough\_95 Start: 40862, Stop: 41413, Start Num: 18

Candidate Starts for Burrough\_95:

(Start: 18 @40862 has 155 MA's), (Start: 34 @40916 has 2 MA's), (37, 40961), (38, 40988), (41, 41003), (43, 41006), (62, 41159), (89, 41333), (93, 41354),

Gene: Bxz1\_93 Start: 41913, Stop: 42464, Start Num: 18

Candidate Starts for Bxz1\_93:

(Start: 18 @41913 has 155 MA's), (Start: 34 @41967 has 2 MA's), (37, 42012), (38, 42039), (41, 42054), (43, 42057), (62, 42210), (89, 42384), (93, 42405),

Gene: Cactojaque\_90 Start: 38524, Stop: 39075, Start Num: 18

Candidate Starts for Cactojaque\_90:

(Start: 18 @38524 has 155 MA's), (Start: 34 @38578 has 2 MA's), (37, 38623), (41, 38665), (43, 38668), (62, 38821), (89, 38995), (93, 39016),

Gene: Cali\_90 Start: 40439, Stop: 40990, Start Num: 18

Candidate Starts for Cali\_90:

(Start: 18 @40439 has 155 MA's), (Start: 34 @40493 has 2 MA's), (37, 40538), (41, 40580), (43, 40583), (62, 40736), (89, 40910), (100, 40985),

Gene: Cane17\_84 Start: 39031, Stop: 39585, Start Num: 18

Candidate Starts for Cane17\_84:

(Start: 18 @39031 has 155 MA's), (Start: 34 @39088 has 2 MA's), (35, 39091), (37, 39133), (41, 39175), (43, 39178), (62, 39331), (89, 39505), (93, 39526),

Gene: Capablanca\_97 Start: 40732, Stop: 41283, Start Num: 18

Candidate Starts for Capablanca\_97:

(Start: 18 @40732 has 155 MA's), (Start: 34 @40786 has 2 MA's), (37, 40831), (41, 40873), (43, 40876), (62, 41029), (89, 41203), (93, 41224),

Gene: Caravan\_90 Start: 40236, Stop: 40787, Start Num: 18

Candidate Starts for Caravan\_90:

(Start: 18 @40236 has 155 MA's), (Start: 34 @40290 has 2 MA's), (37, 40335), (41, 40377), (43, 40380), (62, 40533), (89, 40707), (93, 40728),

Gene: Catera\_92 Start: 38689, Stop: 39240, Start Num: 18

Candidate Starts for Catera\_92:

(Start: 18 @38689 has 155 MA's), (Start: 34 @38743 has 2 MA's), (37, 38788), (41, 38830), (43, 38833), (62, 38986), (89, 39160), (93, 39181),

Gene: Chargie21\_91 Start: 38600, Stop: 39151, Start Num: 18

Candidate Starts for Chargie21\_91:

(Start: 18 @38600 has 155 MA's), (Start: 34 @38654 has 2 MA's), (37, 38699), (41, 38741), (43, 38744), (62, 38897), (89, 39071), (100, 39146),

Gene: CharlieB\_90 Start: 38437, Stop: 38988, Start Num: 18

Candidate Starts for CharlieB\_90:

(Start: 18 @38437 has 155 MA's), (Start: 34 @38491 has 2 MA's), (37, 38536), (41, 38578), (43, 38581), (62, 38734), (89, 38908), (100, 38983),

Gene: ChaylaJr\_90 Start: 38315, Stop: 38866, Start Num: 18

Candidate Starts for ChaylaJr\_90:

(Start: 18 @38315 has 155 MA's), (Start: 34 @38369 has 2 MA's), (37, 38414), (41, 38456), (43, 38459), (62, 38612), (89, 38786), (93, 38807),

Gene: CherryCola\_20 Start: 11921, Stop: 12499, Start Num: 31

Candidate Starts for CherryCola\_20:

(Start: 31 @11921 has 33 MA's), (37, 11966), (54, 12110), (65, 12197), (73, 12245), (80, 12275), (83, 12284), (91, 12365), (96, 12398), (97, 12404), (99, 12425), (101, 12491),

Gene: CherryTomatoes\_92 Start: 40507, Stop: 41040, Start Num: 28

Candidate Starts for CherryTomatoes\_92:

(4, 40165), (16, 40444), (Start: 28 @40507 has 4 MA's), (33, 40525), (37, 40576), (39, 40612), (43, 40621), (45, 40648), (46, 40654), (58, 40750), (59, 40762), (69, 40816), (74, 40849), (88, 40957), (90, 40963),

Gene: ChickenPhender\_91 Start: 38648, Stop: 39199, Start Num: 18

Candidate Starts for ChickenPhender\_91:

(Start: 18 @38648 has 155 MA's), (Start: 34 @38702 has 2 MA's), (37, 38747), (41, 38789), (43, 38792), (62, 38945), (89, 39119), (93, 39140),

Gene: Chomp\_94 Start: 40895, Stop: 41446, Start Num: 18

Candidate Starts for Chomp\_94:

(Start: 18 @40895 has 155 MA's), (Start: 34 @40949 has 2 MA's), (37, 40994), (41, 41036), (43, 41039), (62, 41192), (89, 41366), (100, 41441),

Gene: CindyLou\_96 Start: 40936, Stop: 41487, Start Num: 18

Candidate Starts for CindyLou\_96:

(Start: 18 @40936 has 155 MA's), (Start: 34 @40990 has 2 MA's), (37, 41035), (41, 41077), (43, 41080), (62, 41233), (89, 41407), (100, 41482),

Gene: ClamChowder\_19 Start: 11685, Stop: 12278, Start Num: 31

Candidate Starts for ClamChowder\_19:

(Start: 31 @11685 has 33 MA's), (37, 11730), (40, 11769), (61, 11904), (63, 11943), (66, 11958), (68, 11967), (76, 12018), (78, 12027), (96, 12177), (97, 12183), (99, 12204), (101, 12270),

Gene: Cleatunium\_90 Start: 39997, Stop: 40548, Start Num: 18

Candidate Starts for Cleatunium\_90:

(Start: 18 @39997 has 155 MA's), (Start: 34 @40051 has 2 MA's), (37, 40096), (41, 40138), (43, 40141), (62, 40294), (89, 40468), (93, 40489),

Gene: Clown\_21 Start: 13731, Stop: 14288, Start Num: 31

Candidate Starts for Clown\_21:

(7, 13533), (8, 13560), (Start: 31 @13731 has 33 MA's), (37, 13782), (52, 13905), (54, 13917), (63, 13986), (81, 14064), (99, 14214),

Gene: Colt\_85 Start: 39627, Stop: 40181, Start Num: 18

Candidate Starts for Colt\_85:

(Start: 18 @39627 has 155 MA's), (Start: 34 @39684 has 2 MA's), (35, 39687), (37, 39729), (41, 39771), (43, 39774), (62, 39927), (89, 40101), (93, 40122),

Gene: Concombre\_102 Start: 42847, Stop: 43566, Start Num: 5

Candidate Starts for Concombre\_102:

(Start: 5 @42847 has 23 MA's), (6, 42859), (14, 42958), (15, 42991), (29, 43057), (37, 43114), (41, 43156), (43, 43159), (62, 43312), (89, 43486), (93, 43507),

Gene: CoveyB\_19 Start: 11557, Stop: 12135, Start Num: 31

Candidate Starts for CoveyB\_19:

(Start: 31 @11557 has 33 MA's), (37, 11602), (54, 11746), (65, 11833), (73, 11881), (80, 11911), (83, 11920), (91, 12001), (96, 12034), (97, 12040), (99, 12061), (101, 12127),

Gene: DTDevon\_96 Start: 40767, Stop: 41486, Start Num: 5

Candidate Starts for DTDevon\_96:

(Start: 5 @40767 has 23 MA's), (6, 40779), (14, 40878), (15, 40911), (29, 40977), (37, 41034), (41, 41076), (43, 41079), (62, 41232), (89, 41406), (93, 41427),

Gene: Daffodil\_100 Start: 40601, Stop: 41152, Start Num: 18

Candidate Starts for Daffodil\_100:

(Start: 18 @40601 has 155 MA's), (Start: 34 @40655 has 2 MA's), (37, 40700), (41, 40742), (43, 40745), (62, 40898), (89, 41072), (93, 41093),

Gene: Dandelion\_102 Start: 43298, Stop: 43849, Start Num: 18

Candidate Starts for Dandelion\_102:

(Start: 18 @43298 has 155 MA's), (Start: 34 @43352 has 2 MA's), (37, 43397), (41, 43439), (43, 43442), (62, 43595), (89, 43769), (93, 43790),

Gene: Danyall\_19 Start: 11557, Stop: 12135, Start Num: 31

Candidate Starts for Danyall\_19:

(Start: 31 @11557 has 33 MA's), (37, 11602), (54, 11746), (65, 11833), (73, 11881), (80, 11911), (83, 11920), (91, 12001), (96, 12034), (97, 12040), (99, 12061), (101, 12127),

Gene: Darko\_95 Start: 40536, Stop: 41087, Start Num: 18

Candidate Starts for Darko\_95:

(Start: 18 @40536 has 155 MA's), (Start: 34 @40590 has 2 MA's), (37, 40635), (41, 40677), (43, 40680), (62, 40833), (89, 41007), (93, 41028),

Gene: DeejaClivia\_84 Start: 36454, Stop: 37005, Start Num: 18

Candidate Starts for DeejaClivia\_84:

(Start: 18 @36454 has 155 MA's), (Start: 34 @36508 has 2 MA's), (37, 36553), (41, 36595), (43, 36598), (62, 36751), (89, 36925), (93, 36946),

Gene: Delilah\_95 Start: 40602, Stop: 41153, Start Num: 18

Candidate Starts for Delilah\_95:

(Start: 18 @40602 has 155 MA's), (Start: 34 @40656 has 2 MA's), (37, 40701), (41, 40743), (43, 40746), (62, 40899), (89, 41073), (93, 41094),

Gene: Delylah\_98 Start: 40395, Stop: 40946, Start Num: 18

Candidate Starts for Delylah\_98:

(Start: 18 @40395 has 155 MA's), (Start: 34 @40449 has 2 MA's), (37, 40494), (41, 40536), (43, 40539), (62, 40692), (89, 40866), (93, 40887),

Gene: Demodog\_102 Start: 42847, Stop: 43566, Start Num: 5

Candidate Starts for Demodog\_102:

(Start: 5 @42847 has 23 MA's), (6, 42859), (14, 42958), (15, 42991), (29, 43057), (37, 43114), (41, 43156), (43, 43159), (62, 43312), (89, 43486), (93, 43507),

Gene: Derek\_95 Start: 40697, Stop: 41248, Start Num: 18

Candidate Starts for Derek\_95:

(Start: 18 @40697 has 155 MA's), (Start: 34 @40751 has 2 MA's), (37, 40796), (41, 40838), (43, 40841), (62, 40994), (89, 41168), (100, 41243),

Gene: Dessert\_93 Start: 39607, Stop: 40158, Start Num: 18

Candidate Starts for Dessert\_93:

(Start: 18 @39607 has 155 MA's), (Start: 34 @39661 has 2 MA's), (37, 39706), (41, 39748), (43, 39751), (62, 39904), (89, 40078), (93, 40099),

Gene: Dietrick\_87 Start: 38351, Stop: 38902, Start Num: 18

Candidate Starts for Dietrick\_87:

(Start: 18 @38351 has 155 MA's), (Start: 34 @38405 has 2 MA's), (37, 38450), (41, 38492), (43, 38495), (62, 38648), (89, 38822), (93, 38843),

Gene: DirtMonster\_88 Start: 39193, Stop: 39744, Start Num: 18

Candidate Starts for DirtMonster\_88:

(Start: 18 @39193 has 155 MA's), (Start: 34 @39247 has 2 MA's), (37, 39292), (41, 39334), (43, 39337), (62, 39490), (89, 39664),

Gene: Domi\_89 Start: 39930, Stop: 40481, Start Num: 18

Candidate Starts for Domi\_89:

(Start: 18 @39930 has 155 MA's), (Start: 34 @39984 has 2 MA's), (37, 40029), (41, 40071), (43, 40074), (62, 40227), (89, 40401), (93, 40422),

Gene: DrPhinkDaddy\_94 Start: 40656, Stop: 41375, Start Num: 5

Candidate Starts for DrPhinkDaddy\_94:

(Start: 5 @40656 has 23 MA's), (6, 40668), (14, 40767), (15, 40800), (29, 40866), (37, 40923), (41, 40965), (43, 40968), (62, 41121), (89, 41295), (93, 41316),

Gene: Drazdys\_95 Start: 40399, Stop: 40950, Start Num: 18

Candidate Starts for Drazdys\_95:

(Start: 18 @40399 has 155 MA's), (Start: 34 @40453 has 2 MA's), (37, 40498), (41, 40540), (43, 40543), (62, 40696), (89, 40870), (93, 40891),

Gene: Duckfeet\_86 Start: 38404, Stop: 38955, Start Num: 18

Candidate Starts for Duckfeet\_86:

(Start: 18 @38404 has 155 MA's), (Start: 34 @38458 has 2 MA's), (37, 38503), (41, 38545), (43, 38548), (62, 38701), (89, 38875), (100, 38950),

Gene: E3\_gp74 Start: 35751, Stop: 36260, Start Num: 32

Candidate Starts for E3\_gp74:

(Start: 32 @35751 has 2 MA's), (37, 35796), (43, 35841), (46, 35874), (53, 35934), (67, 36036), (86, 36147), (87, 36165), (98, 36243),

Gene: ET08\_84 Start: 39373, Stop: 39924, Start Num: 18

Candidate Starts for ET08\_84:

(Start: 18 @39373 has 155 MA's), (Start: 34 @39427 has 2 MA's), (37, 39472), (41, 39514), (43, 39517), (62, 39670), (89, 39844), (93, 39865),

Gene: EasyJones\_98 Start: 39707, Stop: 40258, Start Num: 18

Candidate Starts for EasyJones\_98:

(Start: 18 @39707 has 155 MA's), (Start: 34 @39761 has 2 MA's), (37, 39806), (41, 39848), (43, 39851), (62, 40004), (89, 40178), (93, 40199),

Gene: EggyFarm\_103 Start: 42658, Stop: 43377, Start Num: 5

Candidate Starts for EggyFarm\_103:

(Start: 5 @42658 has 23 MA's), (6, 42670), (14, 42769), (15, 42802), (29, 42868), (37, 42925), (41, 42967), (43, 42970), (62, 43123), (89, 43297), (93, 43318),

Gene: Egi03\_17 Start: 11152, Stop: 11745, Start Num: 31

Candidate Starts for Egi03\_17:

(10, 11011), (Start: 31 @11152 has 33 MA's), (37, 11197), (40, 11236), (61, 11371), (63, 11410), (66, 11425), (68, 11434), (76, 11485), (78, 11494), (96, 11644), (97, 11650), (99, 11671), (101, 11737),

Gene: EmToTheThree\_98 Start: 42053, Stop: 42604, Start Num: 18

Candidate Starts for EmToTheThree\_98:

(Start: 18 @42053 has 155 MA's), (Start: 34 @42107 has 2 MA's), (37, 42152), (41, 42194), (43, 42197), (62, 42350), (89, 42524), (93, 42545),

Gene: EmmaElysia\_94 Start: 39174, Stop: 39725, Start Num: 18

Candidate Starts for EmmaElysia\_94:

(Start: 18 @39174 has 155 MA's), (Start: 34 @39228 has 2 MA's), (37, 39273), (41, 39315), (43, 39318), (62, 39471), (89, 39645), (100, 39720),

Gene: Erdmann\_96 Start: 40602, Stop: 41153, Start Num: 18

Candidate Starts for Erdmann\_96:

(Start: 18 @40602 has 155 MA's), (Start: 34 @40656 has 2 MA's), (37, 40701), (41, 40743), (43, 40746), (62, 40899), (89, 41073), (93, 41094),

Gene: ErnieJ\_91 Start: 38629, Stop: 39180, Start Num: 18

Candidate Starts for ErnieJ\_91:

(Start: 18 @38629 has 155 MA's), (Start: 34 @38683 has 2 MA's), (37, 38728), (41, 38770), (43, 38773), (62, 38926), (89, 39100), (93, 39121),

Gene: Essence\_92 Start: 40161, Stop: 40712, Start Num: 18

Candidate Starts for Essence\_92:

(Start: 18 @40161 has 155 MA's), (Start: 34 @40215 has 2 MA's), (37, 40260), (41, 40302), (43, 40305), (62, 40458), (89, 40632), (100, 40707),

Gene: Evamon\_17 Start: 11032, Stop: 11610, Start Num: 31

Candidate Starts for Evamon\_17:

(Start: 31 @11032 has 33 MA's), (37, 11077), (54, 11221), (65, 11308), (73, 11356), (80, 11386), (83, 11395), (91, 11476), (96, 11509), (97, 11515), (99, 11536), (101, 11602),

Gene: Ewok\_96 Start: 40229, Stop: 40780, Start Num: 18

Candidate Starts for Ewok\_96:

(Start: 18 @40229 has 155 MA's), (Start: 34 @40283 has 2 MA's), (37, 40328), (41, 40370), (43, 40373), (62, 40526), (89, 40700), (93, 40721),

Gene: Finch\_221 Start: 128530, Stop: 129045, Start Num: 32

Candidate Starts for Finch\_221:

(Start: 32 @128530 has 2 MA's), (37, 128578), (44, 128641), (48, 128683), (49, 128704), (59, 128761), (67, 128818), (69, 128827), (74, 128854), (82, 128887), (92, 128971), (93, 128980), (94, 128983), (95, 128995),

Gene: Fireball\_18 Start: 11155, Stop: 11748, Start Num: 31

Candidate Starts for Fireball\_18:

(10, 11014), (Start: 31 @11155 has 33 MA's), (37, 11200), (40, 11239), (61, 11374), (63, 11413), (66, 11428), (68, 11437), (76, 11488), (78, 11497), (96, 11647), (97, 11653), (99, 11674), (101, 11740),

Gene: Fixie\_90 Start: 38807, Stop: 39358, Start Num: 18

Candidate Starts for Fixie\_90:

(Start: 18 @38807 has 155 MA's), (Start: 34 @38861 has 2 MA's), (37, 38906), (41, 38948), (43, 38951), (62, 39104), (89, 39278), (100, 39353),

Gene: Flabslab\_90 Start: 38385, Stop: 38936, Start Num: 18

Candidate Starts for Flabslab\_90:

(Start: 18 @38385 has 155 MA's), (Start: 34 @38439 has 2 MA's), (37, 38484), (41, 38526), (43, 38529), (62, 38682), (89, 38856), (93, 38877),

Gene: Fludd\_95 Start: 39047, Stop: 39598, Start Num: 18

Candidate Starts for Fludd\_95:

(Start: 18 @39047 has 155 MA's), (Start: 34 @39101 has 2 MA's), (37, 39146), (41, 39188), (43, 39191), (62, 39344), (89, 39518), (100, 39593),

Gene: Fongie\_93 Start: 40442, Stop: 40993, Start Num: 18

Candidate Starts for Fongie\_93:

(Start: 18 @40442 has 155 MA's), (Start: 34 @40496 has 2 MA's), (37, 40541), (41, 40583), (43, 40586), (62, 40739), (89, 40913), (93, 40934),

Gene: FoxtrotP1\_95 Start: 41772, Stop: 42323, Start Num: 18

Candidate Starts for FoxtrotP1\_95:

(Start: 18 @41772 has 155 MA's), (Start: 34 @41826 has 2 MA's), (37, 41871), (41, 41913), (43, 41916), (62, 42069), (89, 42243), (93, 42264),

Gene: FrayBell\_101 Start: 42051, Stop: 42602, Start Num: 18

Candidate Starts for FrayBell\_101:

(Start: 18 @42051 has 155 MA's), (Start: 34 @42105 has 2 MA's), (37, 42150), (41, 42192), (43, 42195), (62, 42348), (89, 42522), (93, 42543),

Gene: FudgeTart\_95 Start: 39795, Stop: 40346, Start Num: 18

Candidate Starts for FudgeTart\_95:

(Start: 18 @39795 has 155 MA's), (Start: 34 @39849 has 2 MA's), (37, 39894), (41, 39936), (43, 39939), (62, 40092), (89, 40266), (93, 40287),

Gene: Fugax\_19 Start: 11685, Stop: 12278, Start Num: 31

Candidate Starts for Fugax\_19:

(Start: 31 @11685 has 33 MA's), (37, 11730), (40, 11769), (61, 11904), (63, 11943), (66, 11958), (68, 11967), (76, 12018), (78, 12027), (96, 12177), (97, 12183), (99, 12204), (101, 12270),

Gene: Gabriel\_97 Start: 39836, Stop: 40555, Start Num: 5

Candidate Starts for Gabriel\_97:

(Start: 5 @39836 has 23 MA's), (6, 39848), (14, 39947), (15, 39980), (29, 40046), (37, 40103), (41, 40145), (43, 40148), (62, 40301), (89, 40475), (93, 40496),

Gene: Gamgam\_95 Start: 39607, Stop: 40158, Start Num: 18

Candidate Starts for Gamgam\_95:

(Start: 18 @39607 has 155 MA's), (Start: 34 @39661 has 2 MA's), (37, 39706), (41, 39748), (43, 39751), (62, 39904), (89, 40078), (100, 40153),

Gene: Gezellig\_17 Start: 11155, Stop: 11748, Start Num: 31

Candidate Starts for Gezellig\_17:

(10, 11014), (Start: 31 @11155 has 33 MA's), (37, 11200), (40, 11239), (61, 11374), (63, 11413), (66, 11428), (68, 11437), (76, 11488), (78, 11497), (96, 11647), (97, 11653), (99, 11674), (101, 11740),

Gene: Ghost\_94 Start: 39607, Stop: 40158, Start Num: 18

Candidate Starts for Ghost\_94:

(Start: 18 @39607 has 155 MA's), (Start: 34 @39661 has 2 MA's), (37, 39706), (41, 39748), (43, 39751), (62, 39904), (89, 40078), (100, 40153),

Gene: Gizmo\_99 Start: 41749, Stop: 42300, Start Num: 18

Candidate Starts for Gizmo\_99:

(Start: 18 @41749 has 155 MA's), (Start: 34 @41803 has 2 MA's), (37, 41848), (41, 41890), (43, 41893), (62, 42046), (89, 42220), (93, 42241),

Gene: GlutenPhree\_96 Start: 39607, Stop: 40158, Start Num: 18

Candidate Starts for GlutenPhree\_96:

(Start: 18 @39607 has 155 MA's), (Start: 34 @39661 has 2 MA's), (37, 39706), (41, 39748), (43, 39751), (62, 39904), (89, 40078), (100, 40153),

Gene: Grasshills\_102 Start: 42658, Stop: 43377, Start Num: 5

Candidate Starts for Grasshills\_102:

(Start: 5 @42658 has 23 MA's), (6, 42670), (14, 42769), (15, 42802), (29, 42868), (37, 42925), (41, 42967), (43, 42970), (62, 43123), (89, 43297), (93, 43318),

Gene: Greely\_96 Start: 41368, Stop: 41928, Start Num: 18

Candidate Starts for Greely\_96:

(Start: 18 @41368 has 155 MA's), (30, 41419), (37, 41467), (40, 41509), (46, 41551), (47, 41557), (51, 41602), (55, 41623), (69, 41713), (72, 41734), (77, 41752), (87, 41836), (100, 41923),

Gene: Grungle\_82 Start: 36989, Stop: 37540, Start Num: 18

Candidate Starts for Grungle\_82:

(Start: 18 @36989 has 155 MA's), (Start: 34 @37043 has 2 MA's), (37, 37088), (41, 37130), (43, 37133), (62, 37286), (89, 37460), (100, 37535),

Gene: Guwapp\_94 Start: 39702, Stop: 40253, Start Num: 18

Candidate Starts for Guwapp\_94:

(Start: 18 @39702 has 155 MA's), (Start: 34 @39756 has 2 MA's), (37, 39801), (41, 39843), (43, 39846), (62, 39999), (89, 40173), (100, 40248),

Gene: Halldule\_88 Start: 38019, Stop: 38570, Start Num: 18

Candidate Starts for Halldule\_88:

(Start: 18 @38019 has 155 MA's), (Start: 34 @38073 has 2 MA's), (37, 38118), (41, 38160), (43, 38163), (62, 38316), (89, 38490), (100, 38565),

Gene: Halo3\_18 Start: 11485, Stop: 12063, Start Num: 31

Candidate Starts for Halo3\_18:

(Start: 31 @11485 has 33 MA's), (37, 11530), (54, 11674), (65, 11761), (73, 11809), (80, 11839), (83, 11848), (91, 11929), (96, 11962), (97, 11968), (101, 12055),

Gene: HyRo\_87 Start: 38778, Stop: 39329, Start Num: 18

Candidate Starts for HyRo\_87:

(Start: 18 @38778 has 155 MA's), (Start: 34 @38832 has 2 MA's), (37, 38877), (41, 38919), (43, 38922), (62, 39075), (89, 39249), (93, 39270),

Gene: IkeLoa\_89 Start: 38966, Stop: 39685, Start Num: 5

Candidate Starts for IkeLoa\_89:

(Start: 5 @38966 has 23 MA's), (6, 38978), (14, 39077), (15, 39110), (29, 39176), (37, 39233), (41, 39275), (43, 39278), (62, 39431), (89, 39605), (93, 39626),

Gene: InigoMontoya\_96 Start: 39568, Stop: 40119, Start Num: 18

Candidate Starts for InigoMontoya\_96:

(Start: 18 @39568 has 155 MA's), (Start: 34 @39622 has 2 MA's), (37, 39667), (41, 39709), (43, 39712), (62, 39865), (89, 40039), (100, 40114),

Gene: InterFolia\_104 Start: 42989, Stop: 43540, Start Num: 18

Candidate Starts for InterFolia\_104:

(Start: 18 @42989 has 155 MA's), (Start: 34 @43043 has 2 MA's), (37, 43088), (41, 43130), (43, 43133), (62, 43286), (89, 43460), (93, 43481),

Gene: Iota\_89 Start: 39348, Stop: 39899, Start Num: 18

Candidate Starts for Iota\_89:

(Start: 18 @39348 has 155 MA's), (Start: 34 @39402 has 2 MA's), (37, 39447), (41, 39489), (43, 39492), (62, 39645), (89, 39819), (100, 39894),

Gene: Issimir\_94 Start: 40545, Stop: 41096, Start Num: 18

Candidate Starts for Issimir\_94:

(Start: 18 @40545 has 155 MA's), (Start: 34 @40599 has 2 MA's), (37, 40644), (41, 40686), (43, 40689), (62, 40842), (89, 41016), (93, 41037),

Gene: Izajani\_95 Start: 40617, Stop: 41336, Start Num: 5

Candidate Starts for Izajani\_95:

(Start: 5 @40617 has 23 MA's), (6, 40629), (14, 40728), (15, 40761), (29, 40827), (37, 40884), (41, 40926), (43, 40929), (62, 41082), (89, 41256), (93, 41277),

Gene: JPickles\_93 Start: 38838, Stop: 39389, Start Num: 18

Candidate Starts for JPickles\_93:

(Start: 18 @38838 has 155 MA's), (Start: 34 @38892 has 2 MA's), (37, 38937), (41, 38979), (43, 38982), (62, 39135), (89, 39309), (100, 39384),

Gene: Jambalaya\_17 Start: 10853, Stop: 11401, Start Num: 31

Candidate Starts for Jambalaya\_17:

(9, 10712), (Start: 31 @10853 has 33 MA's), (37, 10898), (52, 11021), (54, 11033), (63, 11102), (70, 11150), (91, 11267), (95, 11294), (96, 11300), (97, 11306), (99, 11327), (101, 11393),

Gene: Janiyra\_97 Start: 39877, Stop: 40428, Start Num: 18

Candidate Starts for Janiyra\_97:

(Start: 18 @39877 has 155 MA's), (Start: 34 @39931 has 2 MA's), (37, 39976), (41, 40018), (43, 40021), (62, 40174), (89, 40348), (93, 40369),

Gene: JayJay\_101 Start: 41905, Stop: 42624, Start Num: 5

Candidate Starts for JayJay\_101:

(Start: 5 @41905 has 23 MA's), (6, 41917), (14, 42016), (15, 42049), (29, 42115), (37, 42172), (41, 42214), (43, 42217), (62, 42370), (89, 42544), (93, 42565),

Gene: Jaygup\_95 Start: 40363, Stop: 40914, Start Num: 18

Candidate Starts for Jaygup\_95:

(Start: 18 @40363 has 155 MA's), (Start: 34 @40417 has 2 MA's), (37, 40462), (41, 40504), (43, 40507), (62, 40660), (89, 40834), (100, 40909),

Gene: Jedediah\_98 Start: 40863, Stop: 41414, Start Num: 18

Candidate Starts for Jedediah\_98:

(Start: 18 @40863 has 155 MA's), (Start: 34 @40917 has 2 MA's), (37, 40962), (41, 41004), (43, 41007), (62, 41160), (89, 41334), (100, 41409),

Gene: Jemmno\_95 Start: 40313, Stop: 40864, Start Num: 18

Candidate Starts for Jemmno\_95:

(Start: 18 @40313 has 155 MA's), (Start: 34 @40367 has 2 MA's), (37, 40412), (41, 40454), (43, 40457), (62, 40610), (89, 40784), (100, 40859),

Gene: Jessibeth14\_94 Start: 40387, Stop: 40938, Start Num: 18

Candidate Starts for Jessibeth14\_94:

(Start: 18 @40387 has 155 MA's), (Start: 34 @40441 has 2 MA's), (37, 40486), (41, 40528), (43, 40531), (62, 40684), (89, 40858), (93, 40879),

Gene: Jezreel\_95 Start: 40300, Stop: 41019, Start Num: 5

Candidate Starts for Jezreel\_95:

(Start: 5 @40300 has 23 MA's), (6, 40312), (14, 40411), (15, 40444), (29, 40510), (37, 40567), (41, 40609), (43, 40612), (62, 40765), (89, 40939), (93, 40960),

Gene: JohnPork\_17 Start: 11101, Stop: 11649, Start Num: 31

Candidate Starts for JohnPork\_17:

(9, 10960), (Start: 31 @11101 has 33 MA's), (37, 11146), (52, 11269), (54, 11281), (63, 11350), (70, 11398), (91, 11515), (95, 11542), (96, 11548), (97, 11554), (99, 11575), (101, 11641),

Gene: JulietS\_88 Start: 37870, Stop: 38421, Start Num: 18

Candidate Starts for JulietS\_88:

(Start: 18 @37870 has 155 MA's), (Start: 34 @37924 has 2 MA's), (37, 37969), (41, 38011), (43, 38014), (62, 38167), (89, 38341), (100, 38416),

Gene: JustHall\_91 Start: 39515, Stop: 40066, Start Num: 18

Candidate Starts for JustHall\_91:

(Start: 18 @39515 has 155 MA's), (Start: 34 @39569 has 2 MA's), (37, 39614), (41, 39656), (43, 39659), (62, 39812), (89, 39986), (100, 40061),

Gene: Kamryn\_95 Start: 41126, Stop: 41677, Start Num: 18

Candidate Starts for Kamryn\_95:

(Start: 18 @41126 has 155 MA's), (Start: 34 @41180 has 2 MA's), (37, 41225), (41, 41267), (43, 41270), (62, 41423), (89, 41597), (93, 41618),

Gene: Kboogie\_98 Start: 39159, Stop: 39710, Start Num: 18

Candidate Starts for Kboogie\_98:

(Start: 18 @39159 has 155 MA's), (Start: 34 @39213 has 2 MA's), (37, 39258), (41, 39300), (43, 39303), (62, 39456), (89, 39630), (100, 39705),

Gene: Khaleesi\_94 Start: 40349, Stop: 40900, Start Num: 18

Candidate Starts for Khaleesi\_94:

(Start: 18 @40349 has 155 MA's), (Start: 34 @40403 has 2 MA's), (37, 40448), (41, 40490), (43, 40493), (62, 40646), (89, 40820), (93, 40841),

Gene: KimmyK\_19 Start: 11685, Stop: 12278, Start Num: 31

Candidate Starts for KimmyK\_19:

(Start: 31 @11685 has 33 MA's), (37, 11730), (40, 11769), (61, 11904), (63, 11943), (66, 11958), (68, 11967), (76, 12018), (78, 12027), (96, 12177), (97, 12183), (99, 12204), (101, 12270),

Gene: Koguma\_91 Start: 38090, Stop: 38641, Start Num: 18

Candidate Starts for Koguma\_91:

(Start: 18 @38090 has 155 MA's), (Start: 34 @38144 has 2 MA's), (37, 38189), (41, 38231), (43, 38234), (62, 38387), (89, 38561), (100, 38636),

Gene: LRRHood\_89 Start: 39909, Stop: 40460, Start Num: 18

Candidate Starts for LRRHood\_89:

(Start: 18 @39909 has 155 MA's), (Start: 34 @39963 has 2 MA's), (37, 40008), (41, 40050), (43, 40053), (62, 40206), (89, 40380), (100, 40455),

Gene: Labradorite\_95 Start: 39686, Stop: 40237, Start Num: 18

Candidate Starts for Labradorite\_95:

(Start: 18 @39686 has 155 MA's), (Start: 34 @39740 has 2 MA's), (37, 39785), (41, 39827), (43, 39830), (62, 39983), (89, 40157), (93, 40178),

Gene: Latch\_95 Start: 39607, Stop: 40158, Start Num: 18

Candidate Starts for Latch\_95:

(Start: 18 @39607 has 155 MA's), (Start: 34 @39661 has 2 MA's), (37, 39706), (41, 39748), (43, 39751), (62, 39904), (89, 40078), (100, 40153),

Gene: Lee7\_93 Start: 40983, Stop: 41534, Start Num: 18

Candidate Starts for Lee7\_93:

(Start: 18 @40983 has 155 MA's), (Start: 34 @41037 has 2 MA's), (37, 41082), (41, 41124), (43, 41127), (62, 41280), (89, 41454), (93, 41475),

Gene: Lethe\_94 Start: 40797, Stop: 41348, Start Num: 18

Candidate Starts for Lethe\_94:

(Start: 18 @40797 has 155 MA's), (Start: 34 @40851 has 2 MA's), (37, 40896), (41, 40938), (43, 40941), (62, 41094), (89, 41268), (93, 41289),

Gene: LifeSavor\_94 Start: 40127, Stop: 40846, Start Num: 5

Candidate Starts for LifeSavor\_94:

(Start: 5 @40127 has 23 MA's), (6, 40139), (14, 40238), (15, 40271), (29, 40337), (37, 40394), (41, 40436), (43, 40439), (62, 40592), (89, 40766), (100, 40841),

Gene: LinStu\_95 Start: 40973, Stop: 41524, Start Num: 18

Candidate Starts for LinStu\_95:

(Start: 18 @40973 has 155 MA's), (Start: 34 @41027 has 2 MA's), (37, 41072), (41, 41114), (43, 41117), (62, 41270), (89, 41444), (93, 41465),

Gene: Loanshark\_95 Start: 40602, Stop: 41153, Start Num: 18

Candidate Starts for Loanshark\_95:

(Start: 18 @40602 has 155 MA's), (Start: 34 @40656 has 2 MA's), (37, 40701), (41, 40743), (43, 40746), (62, 40899), (89, 41073), (93, 41094),

Gene: LolaVinca\_97 Start: 41708, Stop: 42259, Start Num: 18

Candidate Starts for LolaVinca\_97:

(Start: 18 @41708 has 155 MA's), (Start: 34 @41762 has 2 MA's), (37, 41807), (41, 41849), (43, 41852), (62, 42005), (89, 42179), (93, 42200),

Gene: LookingGlass\_96 Start: 40710, Stop: 41429, Start Num: 5

Candidate Starts for LookingGlass\_96:

(Start: 5 @40710 has 23 MA's), (6, 40722), (14, 40821), (15, 40854), (29, 40920), (37, 40977), (41, 41019), (43, 41022), (62, 41175), (89, 41349), (93, 41370),

Gene: LordLeafolot\_101 Start: 42699, Stop: 43250, Start Num: 18

Candidate Starts for LordLeafolot\_101:

(Start: 18 @42699 has 155 MA's), (Start: 34 @42753 has 2 MA's), (37, 42798), (41, 42840), (43, 42843), (62, 42996), (89, 43170), (93, 43191),

Gene: Lukilu\_86 Start: 40213, Stop: 40764, Start Num: 18

Candidate Starts for Lukilu\_86:

(Start: 18 @40213 has 155 MA's), (Start: 34 @40267 has 2 MA's), (37, 40312), (41, 40354), (43, 40357), (62, 40510), (89, 40684), (93, 40705),

Gene: Lunareta\_93 Start: 41833, Stop: 42342, Start Num: 29

Candidate Starts for Lunareta\_93:

(24, 41818), (27, 41827), (29, 41833), (37, 41890), (41, 41932), (43, 41935), (62, 42088), (89, 42262), (100, 42337),

Gene: Maby2021\_95 Start: 40282, Stop: 41001, Start Num: 5

Candidate Starts for Maby2021\_95:

(Start: 5 @40282 has 23 MA's), (6, 40294), (14, 40393), (15, 40426), (29, 40492), (37, 40549), (41, 40591), (43, 40594), (62, 40747), (89, 40921), (93, 40942),

Gene: Mangeria\_95 Start: 40564, Stop: 41115, Start Num: 18

Candidate Starts for Mangeria\_95:

(Start: 18 @40564 has 155 MA's), (Start: 34 @40618 has 2 MA's), (37, 40663), (41, 40705), (43, 40708), (62, 40861), (89, 41035), (93, 41056),

Gene: Matsumoto\_94 Start: 40327, Stop: 40878, Start Num: 18

Candidate Starts for Matsumoto\_94:

(Start: 18 @40327 has 155 MA's), (Start: 34 @40381 has 2 MA's), (37, 40426), (41, 40468), (43, 40471), (62, 40624), (89, 40798), (93, 40819),

Gene: Maturis\_93 Start: 40723, Stop: 41274, Start Num: 18

Candidate Starts for Maturis\_93:

(Start: 18 @40723 has 155 MA's), (Start: 34 @40777 has 2 MA's), (37, 40822), (41, 40864), (43, 40867), (62, 41020), (89, 41194), (93, 41215),

Gene: McGee\_96 Start: 38791, Stop: 39342, Start Num: 18

Candidate Starts for McGee\_96:

(Start: 18 @38791 has 155 MA's), (Start: 34 @38845 has 2 MA's), (37, 38890), (41, 38932), (43, 38935), (62, 39088), (89, 39262), (100, 39337),

Gene: McWolfish\_93 Start: 40007, Stop: 40726, Start Num: 5

Candidate Starts for McWolfish\_93:

(Start: 5 @40007 has 23 MA's), (6, 40019), (14, 40118), (15, 40151), (29, 40217), (37, 40274), (41, 40316), (43, 40319), (89, 40646), (93, 40667),

Gene: Megamind\_94 Start: 40268, Stop: 40819, Start Num: 18

Candidate Starts for Megamind\_94:

(Start: 18 @40268 has 155 MA's), (Start: 34 @40322 has 2 MA's), (37, 40367), (41, 40409), (43, 40412), (62, 40565), (89, 40739), (93, 40760),

Gene: Melpomini\_89 Start: 37792, Stop: 38343, Start Num: 18

Candidate Starts for Melpomini\_89:

(Start: 18 @37792 has 155 MA's), (Start: 34 @37846 has 2 MA's), (37, 37891), (41, 37933), (43, 37936), (62, 38089), (89, 38263), (93, 38284),

Gene: MikeLiesIn\_96 Start: 40615, Stop: 41166, Start Num: 18

Candidate Starts for MikeLiesIn\_96:

(Start: 18 @40615 has 155 MA's), (Start: 34 @40669 has 2 MA's), (37, 40714), (41, 40756), (43, 40759), (62, 40912), (89, 41086), (93, 41107),

Gene: Mikro\_93 Start: 41525, Stop: 42244, Start Num: 5

Candidate Starts for Mikro\_93:

(Start: 5 @41525 has 23 MA's), (6, 41537), (14, 41636), (15, 41669), (29, 41735), (37, 41792), (41, 41834), (43, 41837), (62, 41990), (89, 42164), (93, 42185),

Gene: MoMoMixon\_96 Start: 40340, Stop: 40891, Start Num: 18

Candidate Starts for MoMoMixon\_96:

(Start: 18 @40340 has 155 MA's), (Start: 34 @40394 has 2 MA's), (37, 40439), (41, 40481), (43, 40484), (62, 40637), (89, 40811), (93, 40832),

Gene: Moby\_86 Start: 35867, Stop: 36418, Start Num: 18

Candidate Starts for Moby\_86:

(Start: 18 @35867 has 155 MA's), (Start: 34 @35921 has 2 MA's), (37, 35966), (41, 36008), (43, 36011), (62, 36164), (89, 36338), (93, 36359),

Gene: Moiqah\_86 Start: 35867, Stop: 36418, Start Num: 18

Candidate Starts for Moiqah\_86:

(Start: 18 @35867 has 155 MA's), (Start: 34 @35921 has 2 MA's), (37, 35966), (41, 36008), (43, 36011), (62, 36164), (89, 36338), (93, 36359),

Gene: Momo\_94 Start: 39607, Stop: 40158, Start Num: 18

Candidate Starts for Momo\_94:

(Start: 18 @39607 has 155 MA's), (Start: 34 @39661 has 2 MA's), (37, 39706), (41, 39748), (43, 39751), (62, 39904), (89, 40078), (100, 40153),

Gene: Montpel\_93 Start: 41833, Stop: 42342, Start Num: 29

Candidate Starts for Montpel\_93:

(24, 41818), (27, 41827), (29, 41833), (37, 41890), (41, 41932), (43, 41935), (62, 42088), (89, 42262), (100, 42337),

Gene: Morizzled23\_95 Start: 39312, Stop: 39863, Start Num: 18

Candidate Starts for Morizzled23\_95:

(Start: 18 @39312 has 155 MA's), (Start: 34 @39366 has 2 MA's), (37, 39411), (41, 39453), (43, 39456), (62, 39609), (89, 39783), (93, 39804),

Gene: Mutzi\_19 Start: 11448, Stop: 12002, Start Num: 31

Candidate Starts for Mutzi\_19:

(8, 11277), (Start: 31 @11448 has 33 MA's), (37, 11493), (54, 11628), (63, 11700), (81, 11778), (96, 11901), (97, 11907), (101, 11994),

Gene: Myrna\_94 Start: 42145, Stop: 42711, Start Num: 18

Candidate Starts for Myrna\_94:

(Start: 18 @42145 has 155 MA's), (19, 42148), (21, 42157), (23, 42175), (30, 42202), (37, 42250), (46, 42334), (47, 42340), (55, 42406), (59, 42439), (72, 42517), (77, 42535), (85, 42586),

Gene: Naija\_94 Start: 39607, Stop: 40158, Start Num: 18

Candidate Starts for Naija\_94:

(Start: 18 @39607 has 155 MA's), (Start: 34 @39661 has 2 MA's), (37, 39706), (41, 39748), (43, 39751), (62, 39904), (89, 40078), (100, 40153),

Gene: Napoleon13\_91 Start: 38410, Stop: 38961, Start Num: 18

Candidate Starts for Napoleon13\_91:

(Start: 18 @38410 has 155 MA's), (Start: 34 @38464 has 2 MA's), (37, 38509), (41, 38551), (43, 38554), (62, 38707), (89, 38881), (93, 38902),

Gene: Nappy\_97 Start: 41165, Stop: 41884, Start Num: 5

Candidate Starts for Nappy\_97:

(Start: 5 @41165 has 23 MA's), (6, 41177), (14, 41276), (15, 41309), (29, 41375), (37, 41432), (41, 41474), (43, 41477), (62, 41630), (89, 41804), (100, 41879),

Gene: Naval22\_103 Start: 42206, Stop: 42757, Start Num: 18

Candidate Starts for Naval22\_103:

(Start: 18 @42206 has 155 MA's), (Start: 34 @42260 has 2 MA's), (37, 42305), (41, 42347), (43, 42350), (62, 42503), (89, 42677), (93, 42698),

Gene: NedWong\_96 Start: 40602, Stop: 41153, Start Num: 18

Candidate Starts for NedWong\_96:

(Start: 18 @40602 has 155 MA's), (Start: 34 @40656 has 2 MA's), (37, 40701), (41, 40743), (43, 40746), (62, 40899), (89, 41073), (93, 41094),

Gene: Ngannou\_91 Start: 38589, Stop: 39140, Start Num: 18

Candidate Starts for Ngannou\_91:

(Start: 18 @38589 has 155 MA's), (Start: 34 @38643 has 2 MA's), (37, 38688), (41, 38730), (43, 38733), (62, 38886), (89, 39060), (100, 39135),

Gene: Nidhogg\_96 Start: 40455, Stop: 41174, Start Num: 5

Candidate Starts for Nidhogg\_96:

(Start: 5 @40455 has 23 MA's), (6, 40467), (14, 40566), (15, 40599), (29, 40665), (37, 40722), (41, 40764), (43, 40767), (62, 40920), (89, 41094), (93, 41115),

Gene: NoodleTree\_103 Start: 41632, Stop: 42351, Start Num: 5

Candidate Starts for NoodleTree\_103:

(Start: 5 @41632 has 23 MA's), (6, 41644), (14, 41743), (15, 41776), (29, 41842), (37, 41899), (41, 41941), (43, 41944), (62, 42097), (89, 42271), (93, 42292),

Gene: Norm\_96 Start: 41375, Stop: 41926, Start Num: 18

Candidate Starts for Norm\_96:

(Start: 18 @41375 has 155 MA's), (Start: 34 @41429 has 2 MA's), (37, 41474), (41, 41516), (43, 41519), (62, 41672), (89, 41846), (93, 41867),

Gene: Nubi\_17 Start: 11052, Stop: 11630, Start Num: 31

Candidate Starts for Nubi\_17:

(Start: 31 @11052 has 33 MA's), (37, 11097), (54, 11241), (65, 11328), (73, 11376), (80, 11406), (83, 11415), (91, 11496), (96, 11529), (97, 11535), (99, 11556), (101, 11622),

Gene: NuevoMundo\_101 Start: 42562, Stop: 43281, Start Num: 5

Candidate Starts for NuevoMundo\_101:

(Start: 5 @42562 has 23 MA's), (6, 42574), (14, 42673), (15, 42706), (29, 42772), (37, 42829), (41, 42871), (43, 42874), (62, 43027), (89, 43201), (93, 43222),

Gene: OrediggerDelux\_93 Start: 41372, Stop: 41923, Start Num: 18

Candidate Starts for OrediggerDelux\_93:

(Start: 18 @41372 has 155 MA's), (Start: 34 @41426 has 2 MA's), (37, 41471), (41, 41513), (43, 41516), (62, 41669), (89, 41843), (93, 41864),

Gene: ParkTD\_96 Start: 40598, Stop: 41149, Start Num: 18

Candidate Starts for ParkTD\_96:

(Start: 18 @40598 has 155 MA's), (Start: 34 @40652 has 2 MA's), (37, 40697), (41, 40739), (43, 40742), (62, 40895), (89, 41069), (93, 41090),

Gene: Patter\_95 Start: 39624, Stop: 40175, Start Num: 18

Candidate Starts for Patter\_95:

(Start: 18 @39624 has 155 MA's), (Start: 34 @39678 has 2 MA's), (37, 39723), (41, 39765), (43, 39768), (62, 39921), (89, 40095), (100, 40170),

Gene: Phabba\_99 Start: 41176, Stop: 41709, Start Num: 18

Candidate Starts for Phabba\_99:

(Start: 18 @41176 has 155 MA's), (26, 41191), (30, 41200), (37, 41248), (40, 41290), (46, 41332), (47, 41338), (55, 41404), (69, 41494), (72, 41515), (77, 41533), (85, 41584), (87, 41617), (100, 41704),

Gene: PharkleMinkus\_100 Start: 42051, Stop: 42602, Start Num: 18

Candidate Starts for PharkleMinkus\_100:

(Start: 18 @42051 has 155 MA's), (Start: 34 @42105 has 2 MA's), (37, 42150), (41, 42192), (43, 42195), (62, 42348), (89, 42522), (93, 42543),

Gene: Phlegm\_97 Start: 39607, Stop: 40158, Start Num: 18

Candidate Starts for Phlegm\_97:

(Start: 18 @39607 has 155 MA's), (Start: 34 @39661 has 2 MA's), (37, 39706), (41, 39748), (43, 39751), (62, 39904), (89, 40078), (100, 40153),

Gene: Phlop\_17 Start: 11155, Stop: 11703, Start Num: 31

Candidate Starts for Phlop\_17:

(9, 11014), (Start: 31 @11155 has 33 MA's), (37, 11200), (52, 11323), (54, 11335), (63, 11404), (70, 11452), (91, 11569), (95, 11596), (96, 11602), (97, 11608), (99, 11629), (101, 11695),

Gene: Phox\_92 Start: 40470, Stop: 41021, Start Num: 18

Candidate Starts for Phox\_92:

(Start: 18 @40470 has 155 MA's), (Start: 34 @40524 has 2 MA's), (37, 40569), (41, 40611), (43, 40614), (62, 40767), (89, 40941), (93, 40962),

Gene: Phrappuccino\_50 Start: 29802, Stop: 30395, Start Num: 17

Candidate Starts for Phrappuccino\_50:

(10, 29724), (Start: 17 @29802 has 2 MA's), (25, 29844), (37, 29919), (40, 29958), (43, 29964), (50, 30048), (56, 30078), (58, 30093), (60, 30108), (64, 30153), (67, 30168), (77, 30216), (79, 30225), (84, 30249), (86, 30282), (87, 30300),

Gene: Phusco\_95 Start: 40372, Stop: 40923, Start Num: 18

Candidate Starts for Phusco\_95:

(Start: 18 @40372 has 155 MA's), (Start: 34 @40426 has 2 MA's), (37, 40471), (41, 40513), (43, 40516), (62, 40669), (89, 40843), (100, 40918),

Gene: Pier\_99 Start: 41603, Stop: 42154, Start Num: 18

Candidate Starts for Pier\_99:

(Start: 18 @41603 has 155 MA's), (Start: 34 @41657 has 2 MA's), (37, 41702), (41, 41744), (43, 41747), (62, 41900), (89, 42074), (93, 42095),

Gene: PinkCoffee\_19 Start: 11694, Stop: 12287, Start Num: 31

Candidate Starts for PinkCoffee\_19:

(Start: 31 @11694 has 33 MA's), (37, 11739), (40, 11778), (61, 11913), (63, 11952), (66, 11967), (68, 11976), (76, 12027), (78, 12036), (96, 12186), (97, 12192), (99, 12213), (101, 12279),

Gene: Pinkcreek\_86 Start: 37556, Stop: 38107, Start Num: 18

Candidate Starts for Pinkcreek\_86:

(Start: 18 @37556 has 155 MA's), (Start: 34 @37610 has 2 MA's), (37, 37655), (41, 37697), (43, 37700), (62, 37853), (89, 38027), (93, 38048),

Gene: Pio\_99 Start: 42335, Stop: 42886, Start Num: 18

Candidate Starts for Pio\_99:

(Start: 18 @42335 has 155 MA's), (Start: 34 @42389 has 2 MA's), (37, 42434), (38, 42461), (41, 42476), (43, 42479), (62, 42632), (89, 42806), (93, 42827),

Gene: Pivoine\_94 Start: 39607, Stop: 40158, Start Num: 18

Candidate Starts for Pivoine\_94:

(Start: 18 @39607 has 155 MA's), (Start: 34 @39661 has 2 MA's), (37, 39706), (41, 39748), (43, 39751), (62, 39904), (89, 40078), (100, 40153),

Gene: Pleione\_98 Start: 40601, Stop: 41152, Start Num: 18

Candidate Starts for Pleione\_98:

(Start: 18 @40601 has 155 MA's), (Start: 34 @40655 has 2 MA's), (37, 40700), (41, 40742), (43, 40745), (62, 40898), (89, 41072), (93, 41093),

Gene: Portcullis\_17 Start: 11101, Stop: 11649, Start Num: 31

Candidate Starts for Portcullis\_17:

(9, 10960), (Start: 31 @11101 has 33 MA's), (37, 11146), (52, 11269), (54, 11281), (63, 11350), (70, 11398), (91, 11515), (95, 11542), (96, 11548), (97, 11554), (99, 11575), (101, 11641),

Gene: Primadonna\_89 Start: 39493, Stop: 40044, Start Num: 18

Candidate Starts for Primadonna\_89:

(Start: 18 @39493 has 155 MA's), (Start: 34 @39547 has 2 MA's), (37, 39592), (41, 39634), (43, 39637), (62, 39790), (89, 39964), (93, 39985),

Gene: PullumCavea\_17 Start: 11155, Stop: 11703, Start Num: 31

Candidate Starts for PullumCavea\_17:

(9, 11014), (Start: 31 @11155 has 33 MA's), (37, 11200), (52, 11323), (54, 11335), (63, 11404), (70, 11452), (91, 11569), (95, 11596), (96, 11602), (97, 11608), (99, 11629), (101, 11695),

Gene: Pupper\_92 Start: 40634, Stop: 41167, Start Num: 28

Candidate Starts for Pupper\_92:

(1, 40238), (2, 40244), (3, 40250), (4, 40292), (16, 40571), (Start: 28 @40634 has 4 MA's), (33, 40652), (37, 40703), (39, 40739), (43, 40748), (45, 40775), (46, 40781), (58, 40877), (59, 40889), (69, 40943), (74, 40976), (88, 41084), (90, 41090),

Gene: Pupusa\_100 Start: 42418, Stop: 42969, Start Num: 18

Candidate Starts for Pupusa\_100:

(Start: 18 @42418 has 155 MA's), (Start: 34 @42472 has 2 MA's), (37, 42517), (41, 42559), (43, 42562), (62, 42715), (89, 42889), (100, 42964),

Gene: PurduePete\_95 Start: 40645, Stop: 41364, Start Num: 5

Candidate Starts for PurduePete\_95:

(Start: 5 @40645 has 23 MA's), (6, 40657), (14, 40756), (15, 40789), (29, 40855), (37, 40912), (41, 40954), (43, 40957), (89, 41284), (93, 41305),

Gene: QBert\_89 Start: 40102, Stop: 40653, Start Num: 18

Candidate Starts for QBert\_89:

(Start: 18 @40102 has 155 MA's), (Start: 34 @40156 has 2 MA's), (37, 40201), (41, 40243), (43, 40246), (62, 40399), (89, 40573), (93, 40594),

Gene: Quasimodo\_95 Start: 40137, Stop: 40688, Start Num: 18

Candidate Starts for Quasimodo\_95:

(Start: 18 @40137 has 155 MA's), (Start: 34 @40191 has 2 MA's), (37, 40236), (41, 40278), (43, 40281), (62, 40434), (89, 40608), (100, 40683),

Gene: Rabinovish\_92 Start: 40443, Stop: 40994, Start Num: 18

Candidate Starts for Rabinovish\_92:

(Start: 18 @40443 has 155 MA's), (Start: 34 @40497 has 2 MA's), (37, 40542), (41, 40584), (43, 40587), (62, 40740), (89, 40914), (93, 40935),

Gene: Rahel\_94 Start: 39964, Stop: 40515, Start Num: 18

Candidate Starts for Rahel\_94:

(Start: 18 @39964 has 155 MA's), (Start: 34 @40018 has 2 MA's), (37, 40063), (41, 40105), (43, 40108), (62, 40261), (89, 40435), (100, 40510),

Gene: RedWattleHog\_19 Start: 22279, Stop: 22800, Start Num: 32

Candidate Starts for RedWattleHog\_19:

(Start: 32 @22279 has 2 MA's), (36, 22288), (37, 22327), (40, 22366), (42, 22372), (55, 22480), (57, 22498), (60, 22516), (82, 22627), (86, 22672), (87, 22690),

Gene: Rizal\_92 Start: 39519, Stop: 40070, Start Num: 18

Candidate Starts for Rizal\_92:

(Start: 18 @39519 has 155 MA's), (Start: 34 @39573 has 2 MA's), (37, 39618), (41, 39660), (43, 39663), (62, 39816), (89, 39990), (93, 40011),

Gene: RoMag\_90 Start: 39961, Stop: 40512, Start Num: 18

Candidate Starts for RoMag\_90:

(Start: 18 @39961 has 155 MA's), (Start: 34 @40015 has 2 MA's), (37, 40060), (41, 40102), (43, 40105), (62, 40258), (89, 40432), (93, 40453),

Gene: Rocha\_94 Start: 40044, Stop: 40595, Start Num: 18

Candidate Starts for Rocha\_94:

(Start: 18 @40044 has 155 MA's), (Start: 34 @40098 has 2 MA's), (37, 40143), (41, 40185), (43, 40188), (62, 40341), (89, 40515), (93, 40536),

Gene: RogerDodger\_20 Start: 11921, Stop: 12499, Start Num: 31

Candidate Starts for RogerDodger\_20:

(Start: 31 @11921 has 33 MA's), (37, 11966), (54, 12110), (65, 12197), (73, 12245), (80, 12275), (83, 12284), (91, 12365), (96, 12398), (97, 12404), (99, 12425), (101, 12491),

Gene: Ronan\_88 Start: 37408, Stop: 37959, Start Num: 18

Candidate Starts for Ronan\_88:

(Start: 18 @37408 has 155 MA's), (Start: 34 @37462 has 2 MA's), (37, 37507), (41, 37549), (43, 37552), (62, 37705), (89, 37879), (100, 37954),

Gene: Roots515\_94 Start: 40795, Stop: 41346, Start Num: 18

Candidate Starts for Roots515\_94:

(Start: 18 @40795 has 155 MA's), (Start: 34 @40849 has 2 MA's), (37, 40894), (41, 40936), (43, 40939), (62, 41092), (89, 41266), (93, 41287),

Gene: SCentae\_91 Start: 40780, Stop: 41313, Start Num: 28

Candidate Starts for SCentae\_91:

(1, 40384), (2, 40390), (3, 40396), (4, 40438), (16, 40717), (Start: 28 @40780 has 4 MA's), (33, 40798), (37, 40849), (39, 40885), (43, 40894), (45, 40921), (46, 40927), (58, 41023), (59, 41035), (69, 41089), (74, 41122), (88, 41230), (90, 41236),

Gene: SVoro\_93 Start: 40595, Stop: 41314, Start Num: 5

Candidate Starts for SVoro\_93:

(Start: 5 @40595 has 23 MA's), (6, 40607), (14, 40706), (15, 40739), (29, 40805), (37, 40862), (41, 40904), (43, 40907), (62, 41060), (89, 41234), (93, 41255),

Gene: Salacia\_99 Start: 40715, Stop: 41434, Start Num: 5

Candidate Starts for Salacia\_99:

(Start: 5 @40715 has 23 MA's), (6, 40727), (14, 40826), (15, 40859), (29, 40925), (37, 40982), (41, 41024), (43, 41027), (62, 41180), (89, 41354), (93, 41375),

Gene: Salvador\_17 Start: 11030, Stop: 11608, Start Num: 31

Candidate Starts for Salvador\_17:

(Start: 31 @11030 has 33 MA's), (37, 11075), (54, 11219), (65, 11306), (73, 11354), (80, 11384), (83, 11393), (91, 11474), (96, 11507), (97, 11513), (99, 11534), (101, 11600),

Gene: Sauce\_95 Start: 39456, Stop: 40007, Start Num: 18

Candidate Starts for Sauce\_95:

(Start: 18 @39456 has 155 MA's), (Start: 34 @39510 has 2 MA's), (37, 39555), (41, 39597), (43, 39600), (62, 39753), (89, 39927), (100, 40002),

Gene: Savbucketdawg\_17 Start: 10853, Stop: 11401, Start Num: 31

Candidate Starts for Savbucketdawg\_17:

(9, 10712), (Start: 31 @10853 has 33 MA's), (37, 10898), (52, 11021), (54, 11033), (63, 11102), (70, 11150), (91, 11267), (95, 11294), (96, 11300), (97, 11306), (99, 11327), (101, 11393),

Gene: ScoobyDoobyDoo\_88 Start: 38680, Stop: 39309, Start Num: 13

Candidate Starts for ScoobyDoobyDoo\_88:

(Start: 13 @38680 has 1 MA's), (Start: 17 @38743 has 2 MA's), (20, 38752), (22, 38767), (30, 38800), (37, 38848), (40, 38890), (41, 38893), (46, 38932), (47, 38938), (72, 39115), (77, 39133), (80, 39145), (94, 39253),

Gene: ScottMcG\_92 Start: 39587, Stop: 40138, Start Num: 18

Candidate Starts for ScottMcG\_92:

(Start: 18 @39587 has 155 MA's), (Start: 34 @39641 has 2 MA's), (37, 39686), (41, 39728), (43, 39731), (62, 39884), (89, 40058), (93, 40079),

Gene: Sebata\_96 Start: 41092, Stop: 41643, Start Num: 18

Candidate Starts for Sebata\_96:

(Start: 18 @41092 has 155 MA's), (Start: 34 @41146 has 2 MA's), (37, 41191), (41, 41233), (43, 41236), (62, 41389), (89, 41563), (100, 41638),

Gene: Sendy\_18 Start: 11152, Stop: 11745, Start Num: 31

Candidate Starts for Sendy\_18:

(10, 11011), (Start: 31 @11152 has 33 MA's), (37, 11197), (40, 11236), (61, 11371), (63, 11410), (66, 11425), (68, 11434), (76, 11485), (78, 11494), (96, 11644), (97, 11650), (99, 11671), (101, 11737),

Gene: Settecandela\_50 Start: 29802, Stop: 30395, Start Num: 17

Candidate Starts for Settecandela\_50:

(10, 29724), (Start: 17 @29802 has 2 MA's), (25, 29844), (37, 29919), (40, 29958), (43, 29964), (50, 30048), (56, 30078), (58, 30093), (60, 30108), (64, 30153), (67, 30168), (77, 30216), (79, 30225), (84, 30249), (86, 30282), (87, 30300),

Gene: Shaqnato\_87 Start: 38331, Stop: 38882, Start Num: 18

Candidate Starts for Shaqnato\_87:

(Start: 18 @38331 has 155 MA's), (Start: 34 @38385 has 2 MA's), (37, 38430), (41, 38472), (43, 38475), (62, 38628), (89, 38802), (100, 38877),

Gene: SharkTale\_17 Start: 11756, Stop: 12349, Start Num: 31

Candidate Starts for SharkTale\_17:

(8, 11582), (Start: 31 @11756 has 33 MA's), (37, 11801), (40, 11840), (63, 12014), (66, 12029), (68, 12038), (76, 12089), (96, 12248), (97, 12254), (99, 12275), (101, 12341),

Gene: Shelob\_97 Start: 41594, Stop: 42145, Start Num: 18

Candidate Starts for Shelob\_97:

(Start: 18 @41594 has 155 MA's), (Start: 34 @41648 has 2 MA's), (37, 41693), (41, 41735), (43, 41738), (62, 41891), (89, 42065), (93, 42086),

Gene: ShiaLabeouf\_95 Start: 40803, Stop: 41354, Start Num: 18

Candidate Starts for ShiaLabeouf\_95:

(Start: 18 @40803 has 155 MA's), (Start: 34 @40857 has 2 MA's), (37, 40902), (41, 40944), (43, 40947), (62, 41100), (89, 41274), (93, 41295),

Gene: Shifa\_84 Start: 38045, Stop: 38596, Start Num: 18

Candidate Starts for Shifa\_84:

(Start: 18 @38045 has 155 MA's), (Start: 34 @38099 has 2 MA's), (37, 38144), (41, 38186), (43, 38189), (62, 38342), (89, 38516), (93, 38537),

Gene: Shinji\_17 Start: 11042, Stop: 11590, Start Num: 31

Candidate Starts for Shinji\_17:

(9, 10901), (Start: 31 @11042 has 33 MA's), (37, 11087), (52, 11210), (54, 11222), (63, 11291), (70, 11339), (91, 11456), (95, 11483), (96, 11489), (97, 11495), (99, 11516), (101, 11582),

Gene: Shnickers\_95 Start: 40363, Stop: 40914, Start Num: 18

Candidate Starts for Shnickers\_95:

(Start: 18 @40363 has 155 MA's), (Start: 34 @40417 has 2 MA's), (37, 40462), (41, 40504), (43, 40507), (62, 40660), (89, 40834), (100, 40909),

Gene: Shrimp\_95 Start: 40606, Stop: 41157, Start Num: 18

Candidate Starts for Shrimp\_95:

(Start: 18 @40606 has 155 MA's), (Start: 34 @40660 has 2 MA's), (37, 40705), (41, 40747), (43, 40750), (62, 40903), (89, 41077), (93, 41098),

Gene: SilverDipper\_96 Start: 39607, Stop: 40158, Start Num: 18

Candidate Starts for SilverDipper\_96:

(Start: 18 @39607 has 155 MA's), (Start: 34 @39661 has 2 MA's), (37, 39706), (41, 39748), (43, 39751), (62, 39904), (89, 40078), (100, 40153),

Gene: Sixsevenium\_18 Start: 10908, Stop: 11501, Start Num: 31

Candidate Starts for Sixsevenium\_18:

(Start: 31 @10908 has 33 MA's), (37, 10953), (40, 10992), (61, 11127), (63, 11166), (66, 11181), (68, 11190), (76, 11241), (96, 11400), (97, 11406), (99, 11427), (101, 11493),

Gene: Skog\_155 Start: 70252, Stop: 70785, Start Num: 28

Candidate Starts for Skog\_155:

(16, 70189), (Start: 28 @70252 has 4 MA's), (33, 70270), (Start: 34 @70276 has 2 MA's), (37, 70321), (39, 70357), (43, 70366), (46, 70399), (58, 70495), (59, 70507), (69, 70561), (74, 70594), (75, 70597), (88, 70702),

Gene: SmallFry\_95 Start: 39558, Stop: 40109, Start Num: 18

Candidate Starts for SmallFry\_95:

(Start: 18 @39558 has 155 MA's), (Start: 34 @39612 has 2 MA's), (37, 39657), (41, 39699), (43, 39702), (62, 39855), (89, 40029), (100, 40104),

Gene: SmokingBunny\_17 Start: 11030, Stop: 11608, Start Num: 31

Candidate Starts for SmokingBunny\_17:

(Start: 31 @11030 has 33 MA's), (37, 11075), (54, 11219), (65, 11306), (73, 11354), (80, 11384), (83, 11393), (91, 11474), (96, 11507), (97, 11513), (99, 11534), (101, 11600),

Gene: SoilZilla\_91 Start: 39692, Stop: 40243, Start Num: 18

Candidate Starts for SoilZilla\_91:

(Start: 18 @39692 has 155 MA's), (Start: 34 @39746 has 2 MA's), (37, 39791), (41, 39833), (43, 39836), (62, 39989), (89, 40163), (93, 40184),

Gene: Spec\_90 Start: 40128, Stop: 40679, Start Num: 18

Candidate Starts for Spec\_90:

(Start: 18 @40128 has 155 MA's), (Start: 34 @40182 has 2 MA's), (37, 40227), (41, 40269), (43, 40272), (62, 40425), (89, 40599), (100, 40674),

Gene: Sprinklers\_90 Start: 38828, Stop: 39379, Start Num: 18

Candidate Starts for Sprinklers\_90:

(Start: 18 @38828 has 155 MA's), (Start: 34 @38882 has 2 MA's), (37, 38927), (41, 38969), (43, 38972), (62, 39125), (89, 39299), (100, 39374),

Gene: Spud\_95 Start: 40549, Stop: 41100, Start Num: 18

Candidate Starts for Spud\_95:

(Start: 18 @40549 has 155 MA's), (Start: 34 @40603 has 2 MA's), (37, 40648), (41, 40690), (43, 40693), (62, 40846), (89, 41020), (93, 41041),

Gene: SrishMeg2525\_94 Start: 40709, Stop: 41260, Start Num: 18

Candidate Starts for SrishMeg2525\_94:

(Start: 18 @40709 has 155 MA's), (Start: 34 @40763 has 2 MA's), (37, 40808), (41, 40850), (43, 40853), (62, 41006), (89, 41180), (93, 41201),

Gene: StephanieG\_94 Start: 41418, Stop: 41969, Start Num: 18

Candidate Starts for StephanieG\_94:

(Start: 18 @41418 has 155 MA's), (Start: 34 @41472 has 2 MA's), (37, 41517), (41, 41559), (43, 41562), (62, 41715), (89, 41889), (93, 41910),

Gene: Stormageddon\_17 Start: 21089, Stop: 21607, Start Num: 34

Candidate Starts for Stormageddon\_17:

(12, 20954), (Start: 34 @21089 has 2 MA's), (37, 21134), (40, 21173), (42, 21179), (55, 21287), (60, 21323), (86, 21479),

Gene: Stubby\_88 Start: 38634, Stop: 39185, Start Num: 18

Candidate Starts for Stubby\_88:

(Start: 18 @38634 has 155 MA's), (Start: 34 @38688 has 2 MA's), (37, 38733), (41, 38775), (43, 38778), (62, 38931), (89, 39105), (93, 39126),

Gene: StubbySaigey\_97 Start: 38895, Stop: 39446, Start Num: 18

Candidate Starts for StubbySaigey\_97:

(Start: 18 @38895 has 155 MA's), (Start: 34 @38949 has 2 MA's), (37, 38994), (41, 39036), (43, 39039), (62, 39192), (89, 39366), (100, 39441),

Gene: Substance289\_92 Start: 39881, Stop: 40432, Start Num: 18

Candidate Starts for Substance289\_92:

(Start: 18 @39881 has 155 MA's), (Start: 34 @39935 has 2 MA's), (37, 39980), (41, 40022), (43, 40025), (62, 40178), (89, 40352), (100, 40427),

Gene: Tainan\_100 Start: 41992, Stop: 42543, Start Num: 18

Candidate Starts for Tainan\_100:

(Start: 18 @41992 has 155 MA's), (Start: 34 @42046 has 2 MA's), (37, 42091), (41, 42133), (43, 42136), (62, 42289), (89, 42463), (93, 42484),

Gene: TillyBobJoe\_17 Start: 10856, Stop: 11404, Start Num: 31

Candidate Starts for TillyBobJoe\_17:

(9, 10715), (Start: 31 @10856 has 33 MA's), (37, 10901), (52, 11024), (54, 11036), (63, 11105), (70, 11153), (91, 11270), (95, 11297), (96, 11303), (97, 11309), (99, 11330), (101, 11396),

Gene: TinyTim\_95 Start: 40602, Stop: 41153, Start Num: 18

Candidate Starts for TinyTim\_95:

(Start: 18 @40602 has 155 MA's), (Start: 34 @40656 has 2 MA's), (37, 40701), (41, 40743), (43, 40746), (62, 40899), (89, 41073), (93, 41094),

Gene: Togo\_17 Start: 11030, Stop: 11608, Start Num: 31

Candidate Starts for Togo\_17:

(Start: 31 @11030 has 33 MA's), (37, 11075), (54, 11219), (65, 11306), (73, 11354), (80, 11384), (83, 11393), (91, 11474), (96, 11507), (97, 11513), (99, 11534), (101, 11600),

Gene: Tonenili\_109 Start: 44609, Stop: 45328, Start Num: 5

Candidate Starts for Tonenili\_109:

(Start: 5 @44609 has 23 MA's), (6, 44621), (14, 44720), (15, 44753), (29, 44819), (37, 44876), (41, 44918), (43, 44921), (62, 45074), (71, 45134), (89, 45248),

Gene: Tortoise16\_93 Start: 40459, Stop: 41178, Start Num: 5

Candidate Starts for Tortoise16\_93:

(Start: 5 @40459 has 23 MA's), (6, 40471), (14, 40570), (15, 40603), (29, 40669), (37, 40726), (41, 40768), (43, 40771), (62, 40924), (89, 41098), (93, 41119),

Gene: Trinitium\_91 Start: 38633, Stop: 39184, Start Num: 18

Candidate Starts for Trinitium\_91:

(Start: 18 @38633 has 155 MA's), (Start: 34 @38687 has 2 MA's), (37, 38732), (41, 38774), (43, 38777), (62, 38930), (89, 39104), (100, 39179),

Gene: Turret\_90 Start: 38299, Stop: 38850, Start Num: 18

Candidate Starts for Turret\_90:

(Start: 18 @38299 has 155 MA's), (Start: 34 @38353 has 2 MA's), (37, 38398), (41, 38440), (43, 38443), (62, 38596), (89, 38770), (93, 38791),

Gene: Twister6\_19 Start: 11468, Stop: 12046, Start Num: 31

Candidate Starts for Twister6\_19:

(Start: 31 @11468 has 33 MA's), (37, 11513), (54, 11657), (65, 11744), (73, 11792), (80, 11822), (83, 11831), (91, 11912), (96, 11945), (97, 11951), (99, 11972), (101, 12038),

Gene: Tyke\_97 Start: 42168, Stop: 42719, Start Num: 18

Candidate Starts for Tyke\_97:

(Start: 18 @42168 has 155 MA's), (Start: 34 @42222 has 2 MA's), (37, 42267), (38, 42294), (41, 42309), (43, 42312), (62, 42465), (89, 42639), (93, 42660),

Gene: Valary\_20 Start: 11921, Stop: 12499, Start Num: 31

Candidate Starts for Valary\_20:

(Start: 31 @11921 has 33 MA's), (37, 11966), (54, 12110), (65, 12197), (73, 12245), (80, 12275), (83, 12284), (91, 12365), (96, 12398), (97, 12404), (99, 12425), (101, 12491),

Gene: ValleyTerrace\_95 Start: 39607, Stop: 40158, Start Num: 18

Candidate Starts for ValleyTerrace\_95:

(Start: 18 @39607 has 155 MA's), (Start: 34 @39661 has 2 MA's), (37, 39706), (41, 39748), (43, 39751), (62, 39904), (89, 40078), (100, 40153),

Gene: VanDeWege\_20 Start: 11849, Stop: 12427, Start Num: 31

Candidate Starts for VanDeWege\_20:

(Start: 31 @11849 has 33 MA's), (37, 11894), (54, 12038), (65, 12125), (73, 12173), (80, 12203), (83, 12212), (91, 12293), (96, 12326), (97, 12332), (99, 12353), (101, 12419),

Gene: Vortrix\_110 Start: 44015, Stop: 44734, Start Num: 5

Candidate Starts for Vortrix\_110:

(Start: 5 @44015 has 23 MA's), (6, 44027), (11, 44096), (14, 44126), (15, 44159), (29, 44225), (37, 44282), (41, 44324), (43, 44327), (62, 44480), (89, 44654),

Gene: Wally\_94 Start: 39157, Stop: 39708, Start Num: 18

Candidate Starts for Wally\_94:

(Start: 18 @39157 has 155 MA's), (Start: 34 @39211 has 2 MA's), (37, 39256), (41, 39298), (43, 39301), (62, 39454), (89, 39628), (93, 39649),

Gene: Willis\_96 Start: 40497, Stop: 41048, Start Num: 18

Candidate Starts for Willis\_96:

(Start: 18 @40497 has 155 MA's), (Start: 34 @40551 has 2 MA's), (37, 40596), (41, 40638), (43, 40641), (62, 40794), (89, 40968), (93, 40989),

Gene: Wizard\_17 Start: 11155, Stop: 11748, Start Num: 31

Candidate Starts for Wizard\_17:

(10, 11014), (Start: 31 @11155 has 33 MA's), (37, 11200), (40, 11239), (61, 11374), (63, 11413), (66, 11428), (68, 11437), (76, 11488), (78, 11497), (96, 11647), (97, 11653), (99, 11674), (101, 11740),

Gene: Yassified\_91 Start: 38866, Stop: 39417, Start Num: 18

Candidate Starts for Yassified\_91:

(Start: 18 @38866 has 155 MA's), (Start: 34 @38920 has 2 MA's), (37, 38965), (41, 39007), (43, 39010), (62, 39163), (89, 39337), (100, 39412),

Gene: YemiJoy2021\_96 Start: 40599, Stop: 41150, Start Num: 18

Candidate Starts for YemiJoy2021\_96:

(Start: 18 @40599 has 155 MA's), (Start: 34 @40653 has 2 MA's), (37, 40698), (41, 40740), (43, 40743), (62, 40896), (89, 41070), (93, 41091),

Gene: YoungMoneyMata\_95 Start: 39358, Stop: 39909, Start Num: 18

Candidate Starts for YoungMoneyMata\_95:

(Start: 18 @39358 has 155 MA's), (Start: 34 @39412 has 2 MA's), (37, 39457), (41, 39499), (43, 39502), (62, 39655), (89, 39829), (100, 39904),

Gene: Yucca\_95 Start: 40521, Stop: 41072, Start Num: 18

Candidate Starts for Yucca\_95:

(Start: 18 @40521 has 155 MA's), (Start: 34 @40575 has 2 MA's), (37, 40620), (41, 40662), (43, 40665), (62, 40818), (89, 40992), (93, 41013),

Gene: YungMoney\_19 Start: 12507, Stop: 13058, Start Num: 31

Candidate Starts for YungMoney\_19:

(8, 12336), (Start: 31 @12507 has 33 MA's), (37, 12552), (54, 12687), (63, 12759), (70, 12807), (91, 12924), (96, 12957), (97, 12963), (101, 13050),

Gene: Zalkecks\_96 Start: 40287, Stop: 40838, Start Num: 18

Candidate Starts for Zalkecks\_96:

(Start: 18 @40287 has 155 MA's), (Start: 34 @40341 has 2 MA's), (37, 40386), (41, 40428), (43, 40431), (62, 40584), (89, 40758), (93, 40779),

Gene: Zeenon\_97 Start: 40214, Stop: 40765, Start Num: 18

Candidate Starts for Zeenon\_97:

(Start: 18 @40214 has 155 MA's), (Start: 34 @40268 has 2 MA's), (37, 40313), (41, 40355), (43, 40358), (62, 40511), (89, 40685), (93, 40706),

Gene: ZygoTaiga\_94 Start: 41374, Stop: 41925, Start Num: 18

Candidate Starts for ZygoTaiga\_94:

(Start: 18 @41374 has 155 MA's), (Start: 34 @41428 has 2 MA's), (37, 41473), (41, 41515), (43, 41518), (62, 41671), (89, 41845), (93, 41866),