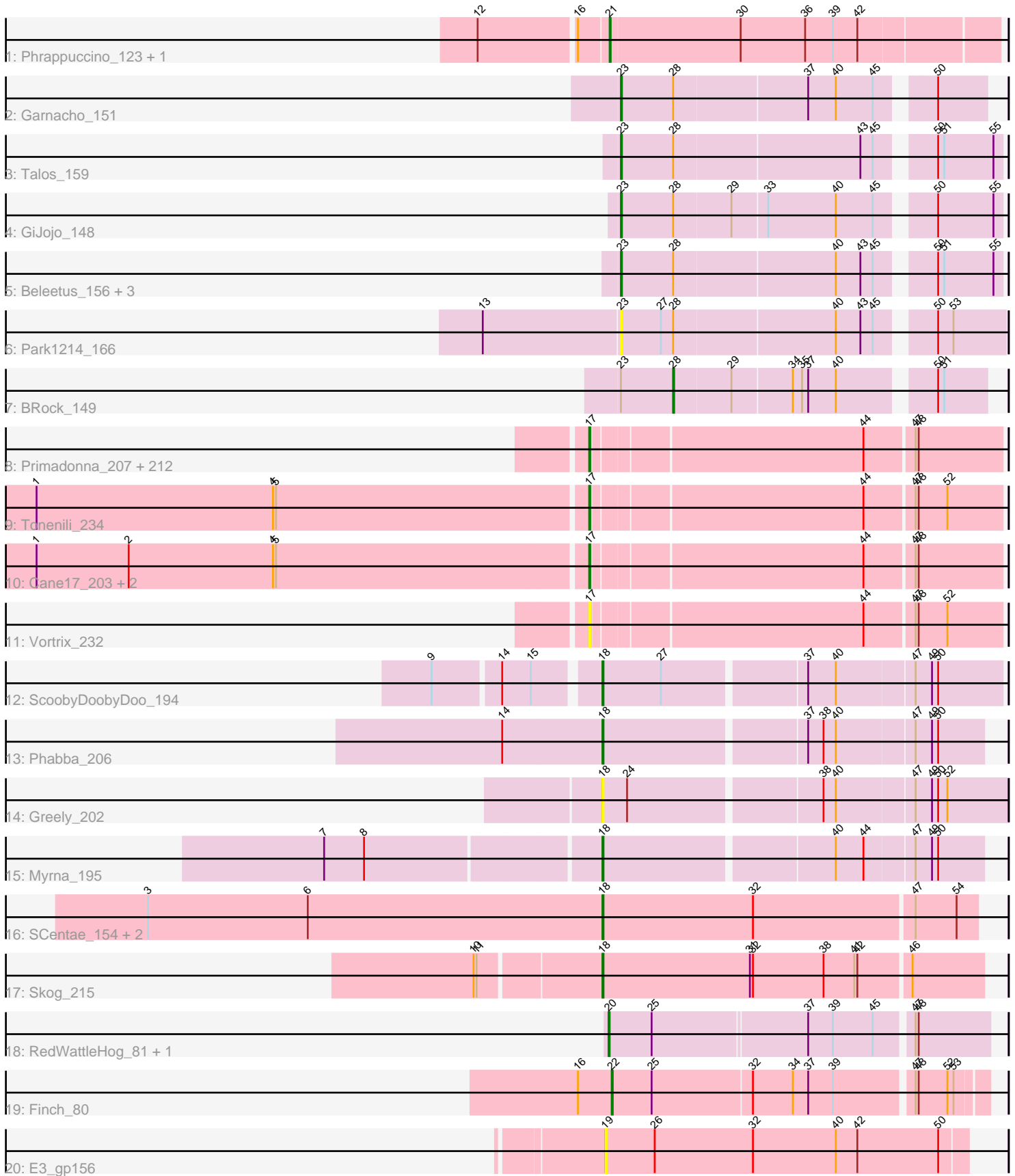


Pham 308017



Note: Tracks are now grouped by subcluster and scaled. Switching in subcluster is indicated by changes in track color. Track scale is now set by default to display the region 30 bp upstream of start 1 to 30 bp downstream of the last possible start. If this default region is judged to be packed too tightly with annotated starts, the track will be further scaled to only show that region of the ORF with annotated starts. This action will be indicated by adding "Zoomed" to the title. For starts, yellow indicates the location of called starts comprised solely of Glimmer/GeneMark auto-annotations, green indicates the location of called starts with at least 1 manual gene annotation.

Pham 308017 Report

This analysis was run 06/27/26 on database version 652.

Pham number 308017 has 241 members, 41 are drafts.

Phages represented in each track:

- Track 1 : Phrappuccino_123, Settecandela_123
- Track 2 : Garnacho_151
- Track 3 : Talos_159
- Track 4 : GiJojo_148
- Track 5 : Beleetus_156, Fudan_155, LuckySocke_157, Alone3_159
- Track 6 : Park1214_166
- Track 7 : BRock_149
- Track 8 : Primadonna_207, IkeLoa_204, Naija_213, Ablatia_211, Duckfeet_206, Rizal_204, RoMag_207, Pleione_216, Tainan_213, Spec_207, Napoleon13_209, Concombre_217, BobaPhatt_204, Capablanca_217, Morizzled23_209, Bezza_201, CindyLou_213, Delylah_214, NuevoMundo_215, FrayBell_215, GlutenPhree_213, Willis_213, EmToTheThree_212, HyRo_200, Loanshark_209, Delilah_210, Ghost_212, Blackbrain_209, YemiJoy2021_213, Stubby_196, Catera_204, LifeSavor_211, Jessibeth14_212, Bowman_210, BadAgartude_206, Derek_209, ChickenPhender_208, Yassified_209, Basquiat_209, I3_222, ArcherS7_212, Naval22_219, Pivoine_213, Shelob_213, Ngannou_209, Astraea_206, MikeLiesIn_214, DTDevon_214, Ewok_211, Labradorite_210, Bipolarisk_210, EasyJones_215, Gamgam_213, BeanWater_204, Bread_207, Jaygup_208, Teardrop_209, CharlieB_206, Dietrick_201, Cali_205, JPickles_208, LolaVinca_210, Grasshills_220, Issimir_205, Belieber_205, Blackdragon_207, Lethe_212, Darko_211, Breeniome_211, ZygoTaiga_209, SoilZilla_207, Melpomini_207, NedWong_211, Atlantean_212, Megamind_209, MoMoMixon_210, Phusco_210, Kboogie_216, Erdmann_213, Roots515_214, Khaleesi_211, McGee_211, Momo_213, Fixie_212, Maby2021_212, Amataga_213, Lukilu_203, Moby_208, LordLeafolot_213, Latch_212, Dandelion_220, BananaFence_209, EggyFarm_221, Sauce_208, Gizmo_218, Bigswole_217, Mangeria_213, Izajani_210, Burrough_214, Ading_213, PharkleMinkus_214, Chargie21_209, ET08_200, JayJay_214, Quasimodo_214, Alice_199, SVoro_208, Pinkcreek_196, DeejaClivia_200, Cleatunium_205, Pier_213, Fongie_213, SmallFry_212, LookingGlass_211, Demodog_218, FudgeTart_207, Jezreel_209, Fludd_212, Cactojaque_207, Bonray_214, Maturis_209, DrPhinkDaddy_209, Shaqnato_203, ErnieJ_205, QBert_204, Rahel_213, Zeenon_214, Phox_213, StephanieG_208, Adlitam_211, Substance289_209, ValleyTerrace_213, Moiqah_207, ScottMcG_206, TinyTim_210, EmmaElysia_216, Tyke_210, Shrimp_214, BigCity_221, Babyland_215, JustHall_206, Domi_206, Halldule_205, Jemmno_211, Sprinklers_210, Iota_207, Specks_216, Chomp_212, Wally_210, Ava3_211, Bxz1_202, Turret_205, Montpel_210, LRRHood_205, YoungMoneyMata_211, StubbySaigey_217,

InigoMontoya_215, DirtMonster_205, Pupusa_216, Kamryn_211, Dessert_210, PurduePete_212, Jedediah_212, Asterius_214, Trinitium_208, Shnickers_210, FoxtrotP1_210, JigglyPuff_219, Daffodil_217, BackyardAgain_208, Nappy_213, Tortoise16_210, InterFolia_215, Salacia_212, NoodleTree_218, Zalkecks_211, Lee7_212, LinStu_211, Sebata_213, Nidhogg_213, Lunareta_210, Ronan_208, Grungle_196, OrediggerDelux_208, Littleton_215, Caravan_203, SrishMeg2525_209, Norm_212, Gabriel_215, Essence_209, ShiaLabeouf_209, Phlegm_216, Flabslab_207, McWolfish_209, Rocha_209, Guwapp_207, Patter_213, Audrick_214, Mikro_208, JulietS_203, Pio_220, Matsumoto_210, Shifa_189, ParkTD_211, ChaylaJr_210, Drazdys_210, Rabinovish_205, Bangla1971_212, Spud_206, Koguma_211, Yucca_212, SilverDipper_216, Janiyra_215

- Track 9 : Tonenili_234
- Track 10 : Cane17_203, Colt_203, Blubba_201
- Track 11 : Vortrix_232
- Track 12 : ScoobyDoobyDoo_194
- Track 13 : Phabba_206
- Track 14 : Greely_202
- Track 15 : Myrna_195
- Track 16 : SCentae_154, CherryTomatoes_156, Pupper_155
- Track 17 : Skog_215
- Track 18 : RedWattleHog_81, Stormageddon_78
- Track 19 : Finch_80
- Track 20 : E3_gp156

Summary of Final Annotations (See graph section above for start numbers):

The start number called the most often in the published annotations is 17, it was called in 181 of the 200 non-draft genes in the pham.

Genes that call this "Most Annotated" start:

- Ablatia_211, Ading_213, Adlitam_211, Alice_199, Amataga_213, ArcherS7_212, Asterius_214, Astraea_206, Atlantean_212, Audrick_214, Ava3_211, Babyland_215, BackyardAgain_208, BadAgartude_206, BananaFence_209, Bangla1971_212, Basquiat_209, BeanWater_204, Belieber_205, Bezza_201, BigCity_221, Bigswole_217, Bipolarisk_210, Blackbrain_209, Blackdragon_207, Blubba_201, BobaPhatt_204, Bonray_214, Bowman_210, Bread_207, Breeniome_211, Burrough_214, Bxz1_202, Cactojaque_207, Cali_205, Cane17_203, Capablanca_217, Caravan_203, Catera_204, Chargie21_209, CharlieB_206, ChaylaJr_210, ChickenPhender_208, Chomp_212, CindyLou_213, Cleatunium_205, Colt_203, Concombre_217, DTDevon_214, Daffodil_217, Dandelion_220, Darko_211, DeejaClivia_200, Delilah_210, Delylah_214, Demodog_218, Derek_209, Dessert_210, Dietrick_201, DirtMonster_205, Domi_206, DrPhinkDaddy_209, Drazdys_210, Duckfeet_206, ET08_200, EasyJones_215, EggyFarm_221, EmToTheThree_212, EmmaElysia_216, Erdmann_213, ErnieJ_205, Essence_209, Ewok_211, Fixie_212, Flabslab_207, Fludd_212, Fongie_213, FoxtrotP1_210, FrayBell_215, FudgeTart_207, Gabriel_215, Gamgam_213, Ghost_212, Gizmo_218, GlutenPhree_213, Grasshills_220, Grungle_196, Guwapp_207, Halldule_205, HyRo_200, I3_222, IkeLoa_204, InigoMontoya_215, InterFolia_215, Iota_207, Issimir_205, Izajani_210, JPickles_208, Janiyra_215, JayJay_214, Jaygup_208, Jedediah_212, Jemmno_211, Jessibeth14_212, Jezreel_209, JigglyPuff_219,

JulietS_203, JustHall_206, Kamryn_211, Kboogie_216, Khaleesi_211, Koguma_211, LRRHood_205, Labradorite_210, Latch_212, Lee7_212, Lethe_212, LifeSavor_211, LinStu_211, Littleton_215, Loanshark_209, LolaVinca_210, LookingGlass_211, LordLeafolot_213, Lukilu_203, Lunareta_210, Maby2021_212, Mangeria_213, Matsumoto_210, Maturis_209, McGee_211, McWolfish_209, Megamind_209, Melpomini_207, MikeLiesIn_214, Mikro_208, MoMoMixon_210, Moby_208, Moiqah_207, Momo_213, Montpel_210, Morizzled23_209, Naija_213, Napoleon13_209, Nappy_213, Naval22_219, NedWong_211, Ngannou_209, Nidhogg_213, NoodleTree_218, Norm_212, NuevoMundo_215, OrediggerDelux_208, ParkTD_211, Patter_213, PharkleMinkus_214, Phlegm_216, Phox_213, Phusco_210, Pier_213, Pinkcreek_196, Pio_220, Pivoine_213, Pleione_216, Primadonna_207, Pupusa_216, PurduePete_212, QBert_204, Quasimodo_214, Rabinovish_205, Rahel_213, Rizal_204, RoMag_207, Rocha_209, Ronan_208, Roots515_214, SVoro_208, Salacia_212, Sauce_208, ScottMcG_206, Sebata_213, Shaqnato_203, Shelob_213, ShiaLabeouf_209, Shifa_189, Shnickers_210, Shrimp_214, SilverDipper_216, SmallFry_212, SoilZilla_207, Spec_207, Specks_216, Sprinklers_210, Spud_206, SrishMeg2525_209, StephanieG_208, StubbySaigey_217, Stubby_196, Substance289_209, Tainan_213, Teardrop_209, TinyTim_210, Tonenili_234, Tortoise16_210, Trinitium_208, Turret_205, Tyke_210, ValleyTerrace_213, Vortrix_232, Wally_210, Willis_213, Yassified_209, YemiJoy2021_213, YoungMoneyMata_211, Yucca_212, Zalkecks_211, Zeenon_214, ZygoTaiga_209,

Genes that have the "Most Annotated" start but do not call it:

-

Genes that do not have the "Most Annotated" start:

- Alone3_159, BRock_149, Beleetus_156, CherryTomatoes_156, E3_gp156, Finch_80, Fudan_155, Garnacho_151, GiJojo_148, Greely_202, LuckySocke_157, Myrna_195, Park1214_166, Phabba_206, Phrappuccino_123, Pupper_155, RedWattleHog_81, SCentae_154, ScoobyDoobyDoo_194, Settecandela_123, Skog_215, Stormageddon_78, Talos_159,

Summary by start number:

Start 17:

- Found in 218 of 241 (90.5%) of genes in pham
- Manual Annotations of this start: 181 of 200
- Called 100.0% of time when present
- Phage (with cluster) where this start called: Ablatia_211 (C1), Ading_213 (C1), Adlitam_211 (C1), Alice_199 (C1), Amataga_213 (C1), ArcherS7_212 (C1), Asterius_214 (C1), Astraea_206 (C1), Atlantean_212 (C1), Audrick_214 (C1), Ava3_211 (C1), Babyland_215 (C1), BackyardAgain_208 (C1), BadAgartude_206 (C1), BananaFence_209 (C1), Bangla1971_212 (C1), Basquiat_209 (C1), BeanWater_204 (C1), Belieber_205 (C1), Bezza_201 (C1), BigCity_221 (C1), Bigswole_217 (C1), Bipolarisk_210 (C1), Blackbrain_209 (C1), Blackdragon_207 (C1), Blubba_201 (C1), BobaPhatt_204 (C1), Bonray_214 (C1), Bowman_210 (C1), Bread_207 (C1), Breeniome_211 (C1), Burrough_214 (C1), Bxz1_202 (C1), Cactojaque_207 (C1), Cali_205 (C1), Cane17_203 (C1), Capablanca_217 (C1), Caravan_203 (C1), Catera_204 (C1), Chargie21_209 (C1), CharlieB_206 (C1), ChaylaJr_210 (C1), ChickenPhender_208 (C1), Chomp_212 (C1), CindyLou_213 (C1), Cleatunium_205 (C1), Colt_203 (C1), Concombre_217 (C1), DTDevon_214 (C1), Daffodil_217 (C1), Dandelion_220 (C1), Darko_211 (C1), DeejaClivia_200 (C1),

Delilah_210 (C1), Delylah_214 (C1), Demodog_218 (C1), Derek_209 (C1), Dessert_210 (C1), Dietrick_201 (C1), DirtMonster_205 (C1), Domi_206 (C1), DrPhinkDaddy_209 (C1), Drazdys_210 (C1), Duckfeet_206 (C1), ET08_200 (C1), EasyJones_215 (C1), EggyFarm_221 (C1), EmToTheThree_212 (C1), EmmaElysia_216 (C1), Erdmann_213 (C1), ErnieJ_205 (C1), Essence_209 (C1), Ewok_211 (C1), Fixie_212 (C1), Flabslab_207 (C1), Fludd_212 (C1), Fongie_213 (C1), FoxtrotP1_210 (C1), FrayBell_215 (C1), FudgeTart_207 (C1), Gabriel_215 (C1), Gamgam_213 (C1), Ghost_212 (C1), Gizmo_218 (C1), GlutenPhree_213 (C1), Grasshills_220 (C1), Grungle_196 (C1), Guwapp_207 (C1), Halldule_205 (C1), HyRo_200 (C1), I3_222 (C1), IkeLoa_204 (C1), InigoMontoya_215 (C1), InterFolia_215 (C1), Iota_207 (C1), Issimir_205 (C1), Izajani_210 (C1), JPickles_208 (C1), Janiyr_215 (C1), JayJay_214 (C1), Jaygup_208 (C1), Jedediah_212 (C1), Jemmno_211 (C1), Jessibeth14_212 (C1), Jezreel_209 (C1), JigglyPuff_219 (C1), JulietS_203 (C1), JustHall_206 (C1), Kamryn_211 (C1), Kboogie_216 (C1), Khaleesi_211 (C1), Koguma_211 (C1), LRRHood_205 (C1), Labradorite_210 (C1), Latch_212 (C1), Lee7_212 (C1), Lethe_212 (C1), LifeSavor_211 (C1), LinStu_211 (C1), Littleton_215 (C1), Loanshark_209 (C1), LolaVinca_210 (C1), LookingGlass_211 (C1), LordLeafolot_213 (C1), Lukilu_203 (C1), Lunareta_210 (C1), Maby2021_212 (C1), Mangeria_213 (C1), Matsumoto_210 (C1), Maturis_209 (C1), McGee_211 (C1), McWolfish_209 (C1), Megamind_209 (C1), Melpomini_207 (C1), MikeLiesIn_214 (C1), Mikro_208 (C1), MoMoMixon_210 (C1), Moby_208 (C1), Moiqah_207 (C1), Momo_213 (C1), Montpel_210 (C1), Morizzled23_209 (C1), Naija_213 (C1), Napoleon13_209 (C1), Nappy_213 (C1), Naval22_219 (C1), NedWong_211 (C1), Ngannou_209 (C1), Nidhogg_213 (C1), NoodleTree_218 (C1), Norm_212 (C1), NuevoMundo_215 (C1), OrediggerDelux_208 (C1), ParkTD_211 (C1), Patter_213 (C1), PharkleMinkus_214 (C1), Phlegm_216 (C1), Phox_213 (C1), Phusco_210 (C1), Pier_213 (C1), Pinkcreek_196 (C1), Pio_220 (C1), Pivoine_213 (C1), Pleione_216 (C1), Primadonna_207 (C1), Pupusa_216 (C1), PurduePete_212 (C1), QBert_204 (C1), Quasimodo_214 (C1), Rabinovich_205 (C1), Rahel_213 (C1), Rizal_204 (C1), RoMag_207 (C1), Rocha_209 (C1), Ronan_208 (C1), Roots515_214 (C1), SVoro_208 (C1), Salacia_212 (C1), Sauce_208 (C1), ScottMcG_206 (C1), Sebata_213 (C1), Shaqnato_203 (C1), Shelob_213 (C1), ShiaLabeouf_209 (C1), Shifa_189 (C1), Shnickers_210 (C1), Shrimp_214 (C1), SilverDipper_216 (C1), SmallFry_212 (C1), SoilZilla_207 (C1), Spec_207 (C1), Specks_216 (C1), Sprinklers_210 (C1), Spud_206 (C1), SrishMeg2525_209 (C1), StephanieG_208 (C1), StubbySaigey_217 (C1), Stubby_196 (C1), Substance289_209 (C1), Tainan_213 (C1), Teardrop_209 (C1), TinyTim_210 (C1), Tonenili_234 (C1), Tortoise16_210 (C1), Trinitium_208 (C1), Turret_205 (C1), Tyke_210 (C1), ValleyTerrace_213 (C1), Vortrix_232 (C1), Wally_210 (C1), Willis_213 (C1), Yassified_209 (C1), YemiJoy2021_213 (C1), YoungMoneyMata_211 (C1), Yucca_212 (C1), Zalkecks_211 (C1), Zeenon_214 (C1), ZygoTaiga_209 (C1),

Start 18:

- Found in 8 of 241 (3.3%) of genes in pham
- Manual Annotations of this start: 7 of 200
- Called 100.0% of time when present
- Phage (with cluster) where this start called: CherryTomatoes_156 (DO), Greely_202 (C2), Myrna_195 (C2), Phabba_206 (C2), Pupper_155 (DO), SCentae_154 (DO), ScoobyDoobyDoo_194 (C2), Skog_215 (DO),

Start 19:

- Found in 1 of 241 (0.4%) of genes in pham
- No Manual Annotations of this start.

- Called 100.0% of time when present
- Phage (with cluster) where this start called: E3_gp156 (singleton),

Start 20:

- Found in 2 of 241 (0.8%) of genes in pham
- Manual Annotations of this start: 2 of 200
- Called 100.0% of time when present
- Phage (with cluster) where this start called: RedWattleHog_81 (DX), Stormageddon_78 (DX),

Start 21:

- Found in 2 of 241 (0.8%) of genes in pham
- Manual Annotations of this start: 2 of 200
- Called 100.0% of time when present
- Phage (with cluster) where this start called: Phrappuccino_123 (AA), Settecandela_123 (AA),

Start 22:

- Found in 1 of 241 (0.4%) of genes in pham
- Manual Annotations of this start: 1 of 200
- Called 100.0% of time when present
- Phage (with cluster) where this start called: Finch_80 (singleton),

Start 23:

- Found in 9 of 241 (3.7%) of genes in pham
- Manual Annotations of this start: 6 of 200
- Called 88.9% of time when present
- Phage (with cluster) where this start called: Alone3_159 (BS), Beleetus_156 (BS), Fudan_155 (BS), Garnacho_151 (BS), GiJojo_148 (BS), LuckySocke_157 (BS), Park1214_166 (BS), Talos_159 (BS),

Start 28:

- Found in 9 of 241 (3.7%) of genes in pham
- Manual Annotations of this start: 1 of 200
- Called 11.1% of time when present
- Phage (with cluster) where this start called: BRock_149 (BS),

Summary by clusters:

There are 7 clusters represented in this pham: AA, DO, singleton, DX, BS, C2, C1,

Info for manual annotations of cluster AA:

- Start number 21 was manually annotated 2 times for cluster AA.

Info for manual annotations of cluster BS:

- Start number 23 was manually annotated 6 times for cluster BS.
- Start number 28 was manually annotated 1 time for cluster BS.

Info for manual annotations of cluster C1:

- Start number 17 was manually annotated 181 times for cluster C1.

Info for manual annotations of cluster C2:

- Start number 18 was manually annotated 3 times for cluster C2.

Info for manual annotations of cluster DO:

•Start number 18 was manually annotated 4 times for cluster DO.

Info for manual annotations of cluster DX:

•Start number 20 was manually annotated 2 times for cluster DX.

Gene Information:

Gene: Ablatia_211 Start: 118217, Stop: 118597, Start Num: 17

Candidate Starts for Ablatia_211:

(Start: 17 @118217 has 181 MA's), (44, 118469), (47, 118514), (48, 118517),

Gene: Ading_213 Start: 118844, Stop: 119224, Start Num: 17

Candidate Starts for Ading_213:

(Start: 17 @118844 has 181 MA's), (44, 119096), (47, 119141), (48, 119144),

Gene: Adlitam_211 Start: 117448, Stop: 117828, Start Num: 17

Candidate Starts for Adlitam_211:

(Start: 17 @117448 has 181 MA's), (44, 117700), (47, 117745), (48, 117748),

Gene: Alice_199 Start: 117416, Stop: 117796, Start Num: 17

Candidate Starts for Alice_199:

(Start: 17 @117416 has 181 MA's), (44, 117668), (47, 117713), (48, 117716),

Gene: Alone3_159 Start: 85017, Stop: 85364, Start Num: 23

Candidate Starts for Alone3_159:

(Start: 23 @85017 has 6 MA's), (Start: 28 @85068 has 1 MA's), (40, 85221), (43, 85245), (45, 85257), (50, 85302), (51, 85308), (55, 85356),

Gene: Amataga_213 Start: 117260, Stop: 117640, Start Num: 17

Candidate Starts for Amataga_213:

(Start: 17 @117260 has 181 MA's), (44, 117512), (47, 117557), (48, 117560),

Gene: ArcherS7_212 Start: 118302, Stop: 118682, Start Num: 17

Candidate Starts for ArcherS7_212:

(Start: 17 @118302 has 181 MA's), (44, 118554), (47, 118599), (48, 118602),

Gene: Asterius_214 Start: 117669, Stop: 118049, Start Num: 17

Candidate Starts for Asterius_214:

(Start: 17 @117669 has 181 MA's), (44, 117921), (47, 117966), (48, 117969),

Gene: Astraea_206 Start: 116864, Stop: 117244, Start Num: 17

Candidate Starts for Astraea_206:

(Start: 17 @116864 has 181 MA's), (44, 117116), (47, 117161), (48, 117164),

Gene: Atlantean_212 Start: 117260, Stop: 117640, Start Num: 17

Candidate Starts for Atlantean_212:

(Start: 17 @117260 has 181 MA's), (44, 117512), (47, 117557), (48, 117560),

Gene: Audrick_214 Start: 117150, Stop: 117530, Start Num: 17

Candidate Starts for Audrick_214:

(Start: 17 @117150 has 181 MA's), (44, 117402), (47, 117447), (48, 117450),

Gene: Ava3_211 Start: 117694, Stop: 118074, Start Num: 17

Candidate Starts for Ava3_211:

(Start: 17 @117694 has 181 MA's), (44, 117946), (47, 117991), (48, 117994),

Gene: BRock_149 Start: 79869, Stop: 80150, Start Num: 28

Candidate Starts for BRock_149:

(Start: 23 @79818 has 6 MA's), (Start: 28 @79869 has 1 MA's), (29, 79923), (34, 79980), (35, 79989), (37, 79995), (40, 80022), (50, 80103), (51, 80109),

Gene: Babyland_215 Start: 118037, Stop: 118417, Start Num: 17

Candidate Starts for Babyland_215:

(Start: 17 @118037 has 181 MA's), (44, 118289), (47, 118334), (48, 118337),

Gene: BackyardAgain_208 Start: 116218, Stop: 116598, Start Num: 17

Candidate Starts for BackyardAgain_208:

(Start: 17 @116218 has 181 MA's), (44, 116470), (47, 116515), (48, 116518),

Gene: BadAgartude_206 Start: 117362, Stop: 117742, Start Num: 17

Candidate Starts for BadAgartude_206:

(Start: 17 @117362 has 181 MA's), (44, 117614), (47, 117659), (48, 117662),

Gene: BananaFence_209 Start: 117493, Stop: 117873, Start Num: 17

Candidate Starts for BananaFence_209:

(Start: 17 @117493 has 181 MA's), (44, 117745), (47, 117790), (48, 117793),

Gene: Bangla1971_212 Start: 117266, Stop: 117646, Start Num: 17

Candidate Starts for Bangla1971_212:

(Start: 17 @117266 has 181 MA's), (44, 117518), (47, 117563), (48, 117566),

Gene: Basquiat_209 Start: 116772, Stop: 117152, Start Num: 17

Candidate Starts for Basquiat_209:

(Start: 17 @116772 has 181 MA's), (44, 117024), (47, 117069), (48, 117072),

Gene: BeanWater_204 Start: 117298, Stop: 117678, Start Num: 17

Candidate Starts for BeanWater_204:

(Start: 17 @117298 has 181 MA's), (44, 117550), (47, 117595), (48, 117598),

Gene: Beleetus_156 Start: 83458, Stop: 83805, Start Num: 23

Candidate Starts for Beleetus_156:

(Start: 23 @83458 has 6 MA's), (Start: 28 @83509 has 1 MA's), (40, 83662), (43, 83686), (45, 83698), (50, 83743), (51, 83749), (55, 83797),

Gene: Belieber_205 Start: 116086, Stop: 116466, Start Num: 17

Candidate Starts for Belieber_205:

(Start: 17 @116086 has 181 MA's), (44, 116338), (47, 116383), (48, 116386),

Gene: Bezza_201 Start: 117810, Stop: 118190, Start Num: 17

Candidate Starts for Bezza_201:

(Start: 17 @117810 has 181 MA's), (44, 118062), (47, 118107), (48, 118110),

Gene: BigCity_221 Start: 120869, Stop: 121249, Start Num: 17
Candidate Starts for BigCity_221:
(Start: 17 @120869 has 181 MA's), (44, 121121), (47, 121166), (48, 121169),

Gene: Bigswole_217 Start: 120723, Stop: 121103, Start Num: 17
Candidate Starts for Bigswole_217:
(Start: 17 @120723 has 181 MA's), (44, 120975), (47, 121020), (48, 121023),

Gene: Bipolarisk_210 Start: 117963, Stop: 118343, Start Num: 17
Candidate Starts for Bipolarisk_210:
(Start: 17 @117963 has 181 MA's), (44, 118215), (47, 118260), (48, 118263),

Gene: Blackbrain_209 Start: 117857, Stop: 118237, Start Num: 17
Candidate Starts for Blackbrain_209:
(Start: 17 @117857 has 181 MA's), (44, 118109), (47, 118154), (48, 118157),

Gene: Blackdragon_207 Start: 117596, Stop: 117976, Start Num: 17
Candidate Starts for Blackdragon_207:
(Start: 17 @117596 has 181 MA's), (44, 117848), (47, 117893), (48, 117896),

Gene: Blubba_201 Start: 120945, Stop: 121325, Start Num: 17
Candidate Starts for Blubba_201:
(1, 120414), (2, 120504), (4, 120645), (5, 120648), (Start: 17 @120945 has 181 MA's), (44, 121197),
(47, 121242), (48, 121245),

Gene: BobaPhatt_204 Start: 115971, Stop: 116351, Start Num: 17
Candidate Starts for BobaPhatt_204:
(Start: 17 @115971 has 181 MA's), (44, 116223), (47, 116268), (48, 116271),

Gene: Bonray_214 Start: 119365, Stop: 119745, Start Num: 17
Candidate Starts for Bonray_214:
(Start: 17 @119365 has 181 MA's), (44, 119617), (47, 119662), (48, 119665),

Gene: Bowman_210 Start: 118471, Stop: 118851, Start Num: 17
Candidate Starts for Bowman_210:
(Start: 17 @118471 has 181 MA's), (44, 118723), (47, 118768), (48, 118771),

Gene: Bread_207 Start: 117363, Stop: 117743, Start Num: 17
Candidate Starts for Bread_207:
(Start: 17 @117363 has 181 MA's), (44, 117615), (47, 117660), (48, 117663),

Gene: Breeniome_211 Start: 116817, Stop: 117197, Start Num: 17
Candidate Starts for Breeniome_211:
(Start: 17 @116817 has 181 MA's), (44, 117069), (47, 117114), (48, 117117),

Gene: Burrough_214 Start: 119133, Stop: 119513, Start Num: 17
Candidate Starts for Burrough_214:
(Start: 17 @119133 has 181 MA's), (44, 119385), (47, 119430), (48, 119433),

Gene: Bxz1_202 Start: 120332, Stop: 120712, Start Num: 17
Candidate Starts for Bxz1_202:
(Start: 17 @120332 has 181 MA's), (44, 120584), (47, 120629), (48, 120632),

Gene: Cactojaque_207 Start: 116792, Stop: 117172, Start Num: 17
Candidate Starts for Cactojaque_207:
(Start: 17 @116792 has 181 MA's), (44, 117044), (47, 117089), (48, 117092),

Gene: Cali_205 Start: 118739, Stop: 119119, Start Num: 17
Candidate Starts for Cali_205:
(Start: 17 @118739 has 181 MA's), (44, 118991), (47, 119036), (48, 119039),

Gene: Cane17_203 Start: 121354, Stop: 121734, Start Num: 17
Candidate Starts for Cane17_203:
(1, 120823), (2, 120913), (4, 121054), (5, 121057), (Start: 17 @121354 has 181 MA's), (44, 121606),
(47, 121651), (48, 121654),

Gene: Capablanca_217 Start: 119960, Stop: 120340, Start Num: 17
Candidate Starts for Capablanca_217:
(Start: 17 @119960 has 181 MA's), (44, 120212), (47, 120257), (48, 120260),

Gene: Caravan_203 Start: 118080, Stop: 118460, Start Num: 17
Candidate Starts for Caravan_203:
(Start: 17 @118080 has 181 MA's), (44, 118332), (47, 118377), (48, 118380),

Gene: Catera_204 Start: 116473, Stop: 116853, Start Num: 17
Candidate Starts for Catera_204:
(Start: 17 @116473 has 181 MA's), (44, 116725), (47, 116770), (48, 116773),

Gene: Chargie21_209 Start: 116772, Stop: 117152, Start Num: 17
Candidate Starts for Chargie21_209:
(Start: 17 @116772 has 181 MA's), (44, 117024), (47, 117069), (48, 117072),

Gene: CharlieB_206 Start: 117500, Stop: 117880, Start Num: 17
Candidate Starts for CharlieB_206:
(Start: 17 @117500 has 181 MA's), (44, 117752), (47, 117797), (48, 117800),

Gene: ChaylaJr_210 Start: 117472, Stop: 117852, Start Num: 17
Candidate Starts for ChaylaJr_210:
(Start: 17 @117472 has 181 MA's), (44, 117724), (47, 117769), (48, 117772),

Gene: CherryTomatoes_156 Start: 110519, Stop: 110878, Start Num: 18
Candidate Starts for CherryTomatoes_156:
(3, 110075), (6, 110231), (Start: 18 @110519 has 7 MA's), (32, 110666), (47, 110819), (54, 110858),

Gene: ChickenPhender_208 Start: 116919, Stop: 117299, Start Num: 17
Candidate Starts for ChickenPhender_208:
(Start: 17 @116919 has 181 MA's), (44, 117171), (47, 117216), (48, 117219),

Gene: Chomp_212 Start: 118549, Stop: 118929, Start Num: 17
Candidate Starts for Chomp_212:
(Start: 17 @118549 has 181 MA's), (44, 118801), (47, 118846), (48, 118849),

Gene: CindyLou_213 Start: 118809, Stop: 119189, Start Num: 17
Candidate Starts for CindyLou_213:
(Start: 17 @118809 has 181 MA's), (44, 119061), (47, 119106), (48, 119109),

Gene: Cleatunium_205 Start: 117192, Stop: 117572, Start Num: 17
Candidate Starts for Cleatunium_205:
(Start: 17 @117192 has 181 MA's), (44, 117444), (47, 117489), (48, 117492),

Gene: Colt_203 Start: 120585, Stop: 120965, Start Num: 17
Candidate Starts for Colt_203:
(1, 120054), (2, 120144), (4, 120285), (5, 120288), (Start: 17 @120585 has 181 MA's), (44, 120837),
(47, 120882), (48, 120885),

Gene: Concombres_217 Start: 120412, Stop: 120792, Start Num: 17
Candidate Starts for Concombres_217:
(Start: 17 @120412 has 181 MA's), (44, 120664), (47, 120709), (48, 120712),

Gene: DTDevon_214 Start: 119298, Stop: 119678, Start Num: 17
Candidate Starts for DTDevon_214:
(Start: 17 @119298 has 181 MA's), (44, 119550), (47, 119595), (48, 119598),

Gene: Daffodil_217 Start: 118263, Stop: 118643, Start Num: 17
Candidate Starts for Daffodil_217:
(Start: 17 @118263 has 181 MA's), (44, 118515), (47, 118560), (48, 118563),

Gene: Dandelion_220 Start: 121896, Stop: 122276, Start Num: 17
Candidate Starts for Dandelion_220:
(Start: 17 @121896 has 181 MA's), (44, 122148), (47, 122193), (48, 122196),

Gene: Darko_211 Start: 117497, Stop: 117877, Start Num: 17
Candidate Starts for Darko_211:
(Start: 17 @117497 has 181 MA's), (44, 117749), (47, 117794), (48, 117797),

Gene: DeejaClivia_200 Start: 116632, Stop: 117012, Start Num: 17
Candidate Starts for DeejaClivia_200:
(Start: 17 @116632 has 181 MA's), (44, 116884), (47, 116929), (48, 116932),

Gene: Delilah_210 Start: 118381, Stop: 118761, Start Num: 17
Candidate Starts for Delilah_210:
(Start: 17 @118381 has 181 MA's), (44, 118633), (47, 118678), (48, 118681),

Gene: Delylah_214 Start: 118670, Stop: 119050, Start Num: 17
Candidate Starts for Delylah_214:
(Start: 17 @118670 has 181 MA's), (44, 118922), (47, 118967), (48, 118970),

Gene: Demodog_218 Start: 120422, Stop: 120802, Start Num: 17
Candidate Starts for Demodog_218:
(Start: 17 @120422 has 181 MA's), (44, 120674), (47, 120719), (48, 120722),

Gene: Derek_209 Start: 117826, Stop: 118206, Start Num: 17
Candidate Starts for Derek_209:
(Start: 17 @117826 has 181 MA's), (44, 118078), (47, 118123), (48, 118126),

Gene: Dessert_210 Start: 116826, Stop: 117206, Start Num: 17
Candidate Starts for Dessert_210:
(Start: 17 @116826 has 181 MA's), (44, 117078), (47, 117123), (48, 117126),

Gene: Dietrick_201 Start: 116502, Stop: 116882, Start Num: 17
Candidate Starts for Dietrick_201:
(Start: 17 @116502 has 181 MA's), (44, 116754), (47, 116799), (48, 116802),

Gene: DirtMonster_205 Start: 117742, Stop: 118122, Start Num: 17
Candidate Starts for DirtMonster_205:
(Start: 17 @117742 has 181 MA's), (44, 117994), (47, 118039), (48, 118042),

Gene: Domi_206 Start: 117853, Stop: 118233, Start Num: 17
Candidate Starts for Domi_206:
(Start: 17 @117853 has 181 MA's), (44, 118105), (47, 118150), (48, 118153),

Gene: DrPhinkDaddy_209 Start: 119041, Stop: 119421, Start Num: 17
Candidate Starts for DrPhinkDaddy_209:
(Start: 17 @119041 has 181 MA's), (44, 119293), (47, 119338), (48, 119341),

Gene: Drazdys_210 Start: 117943, Stop: 118323, Start Num: 17
Candidate Starts for Drazdys_210:
(Start: 17 @117943 has 181 MA's), (44, 118195), (47, 118240), (48, 118243),

Gene: Duckfeet_206 Start: 117469, Stop: 117849, Start Num: 17
Candidate Starts for Duckfeet_206:
(Start: 17 @117469 has 181 MA's), (44, 117721), (47, 117766), (48, 117769),

Gene: E3_gp156 Start: 108306, Stop: 108656, Start Num: 19
Candidate Starts for E3_gp156:
(19, 108306), (26, 108354), (32, 108450), (40, 108531), (42, 108552), (50, 108630),

Gene: ET08_200 Start: 117534, Stop: 117914, Start Num: 17
Candidate Starts for ET08_200:
(Start: 17 @117534 has 181 MA's), (44, 117786), (47, 117831), (48, 117834),

Gene: EasyJones_215 Start: 118015, Stop: 118395, Start Num: 17
Candidate Starts for EasyJones_215:
(Start: 17 @118015 has 181 MA's), (44, 118267), (47, 118312), (48, 118315),

Gene: EggyFarm_221 Start: 120870, Stop: 121250, Start Num: 17
Candidate Starts for EggyFarm_221:
(Start: 17 @120870 has 181 MA's), (44, 121122), (47, 121167), (48, 121170),

Gene: EmToTheThree_212 Start: 118414, Stop: 118794, Start Num: 17
Candidate Starts for EmToTheThree_212:
(Start: 17 @118414 has 181 MA's), (44, 118666), (47, 118711), (48, 118714),

Gene: EmmaElysia_216 Start: 118705, Stop: 119085, Start Num: 17
Candidate Starts for EmmaElysia_216:
(Start: 17 @118705 has 181 MA's), (44, 118957), (47, 119002), (48, 119005),

Gene: Erdmann_213 Start: 118373, Stop: 118753, Start Num: 17
Candidate Starts for Erdmann_213:
(Start: 17 @118373 has 181 MA's), (44, 118625), (47, 118670), (48, 118673),

Gene: ErnieJ_205 Start: 116194, Stop: 116574, Start Num: 17

Candidate Starts for ErnieJ_205:

(Start: 17 @116194 has 181 MA's), (44, 116446), (47, 116491), (48, 116494),

Gene: Essence_209 Start: 117155, Stop: 117535, Start Num: 17

Candidate Starts for Essence_209:

(Start: 17 @117155 has 181 MA's), (44, 117407), (47, 117452), (48, 117455),

Gene: Ewok_211 Start: 118291, Stop: 118671, Start Num: 17

Candidate Starts for Ewok_211:

(Start: 17 @118291 has 181 MA's), (44, 118543), (47, 118588), (48, 118591),

Gene: Finch_80 Start: 70145, Stop: 70495, Start Num: 22

Candidate Starts for Finch_80:

(16, 70112), (Start: 22 @70145 has 1 MA's), (25, 70184), (32, 70280), (34, 70319), (37, 70334), (39, 70358), (47, 70430), (48, 70433), (52, 70460), (53, 70466),

Gene: Fixie_212 Start: 117935, Stop: 118315, Start Num: 17

Candidate Starts for Fixie_212:

(Start: 17 @117935 has 181 MA's), (44, 118187), (47, 118232), (48, 118235),

Gene: Flabslab_207 Start: 116336, Stop: 116716, Start Num: 17

Candidate Starts for Flabslab_207:

(Start: 17 @116336 has 181 MA's), (44, 116588), (47, 116633), (48, 116636),

Gene: Fludd_212 Start: 117727, Stop: 118107, Start Num: 17

Candidate Starts for Fludd_212:

(Start: 17 @117727 has 181 MA's), (44, 117979), (47, 118024), (48, 118027),

Gene: Fongie_213 Start: 118314, Stop: 118694, Start Num: 17

Candidate Starts for Fongie_213:

(Start: 17 @118314 has 181 MA's), (44, 118566), (47, 118611), (48, 118614),

Gene: FoxtrotP1_210 Start: 118971, Stop: 119351, Start Num: 17

Candidate Starts for FoxtrotP1_210:

(Start: 17 @118971 has 181 MA's), (44, 119223), (47, 119268), (48, 119271),

Gene: FrayBell_215 Start: 117817, Stop: 118197, Start Num: 17

Candidate Starts for FrayBell_215:

(Start: 17 @117817 has 181 MA's), (44, 118069), (47, 118114), (48, 118117),

Gene: Fudan_155 Start: 83573, Stop: 83920, Start Num: 23

Candidate Starts for Fudan_155:

(Start: 23 @83573 has 6 MA's), (Start: 28 @83624 has 1 MA's), (40, 83777), (43, 83801), (45, 83813), (50, 83858), (51, 83864), (55, 83912),

Gene: FudgeTart_207 Start: 117438, Stop: 117818, Start Num: 17

Candidate Starts for FudgeTart_207:

(Start: 17 @117438 has 181 MA's), (44, 117690), (47, 117735), (48, 117738),

Gene: Gabriel_215 Start: 116893, Stop: 117273, Start Num: 17

Candidate Starts for Gabriel_215:

(Start: 17 @116893 has 181 MA's), (44, 117145), (47, 117190), (48, 117193),

Gene: Gamgam_213 Start: 117250, Stop: 117630, Start Num: 17
Candidate Starts for Gamgam_213:
(Start: 17 @117250 has 181 MA's), (44, 117502), (47, 117547), (48, 117550),

Gene: Garnacho_151 Start: 83544, Stop: 83876, Start Num: 23
Candidate Starts for Garnacho_151:
(Start: 23 @83544 has 6 MA's), (Start: 28 @83595 has 1 MA's), (37, 83721), (40, 83748), (45, 83784),
(50, 83829),

Gene: Ghost_212 Start: 117171, Stop: 117551, Start Num: 17
Candidate Starts for Ghost_212:
(Start: 17 @117171 has 181 MA's), (44, 117423), (47, 117468), (48, 117471),

Gene: GiJojo_148 Start: 84369, Stop: 84716, Start Num: 23
Candidate Starts for GiJojo_148:
(Start: 23 @84369 has 6 MA's), (Start: 28 @84420 has 1 MA's), (29, 84474), (33, 84507), (40, 84573),
(45, 84609), (50, 84654), (55, 84708),

Gene: Gizmo_218 Start: 120289, Stop: 120669, Start Num: 17
Candidate Starts for Gizmo_218:
(Start: 17 @120289 has 181 MA's), (44, 120541), (47, 120586), (48, 120589),

Gene: GlutenPhree_213 Start: 117261, Stop: 117641, Start Num: 17
Candidate Starts for GlutenPhree_213:
(Start: 17 @117261 has 181 MA's), (44, 117513), (47, 117558), (48, 117561),

Gene: Grasshills_220 Start: 120869, Stop: 121249, Start Num: 17
Candidate Starts for Grasshills_220:
(Start: 17 @120869 has 181 MA's), (44, 121121), (47, 121166), (48, 121169),

Gene: Greely_202 Start: 115354, Stop: 115731, Start Num: 18
Candidate Starts for Greely_202:
(Start: 18 @115354 has 7 MA's), (24, 115378), (38, 115558), (40, 115570), (47, 115642), (49, 115657),
(50, 115663), (52, 115672),

Gene: Grungle_196 Start: 115208, Stop: 115588, Start Num: 17
Candidate Starts for Grungle_196:
(Start: 17 @115208 has 181 MA's), (44, 115460), (47, 115505), (48, 115508),

Gene: Guwapp_207 Start: 116005, Stop: 116385, Start Num: 17
Candidate Starts for Guwapp_207:
(Start: 17 @116005 has 181 MA's), (44, 116257), (47, 116302), (48, 116305),

Gene: Halldule_205 Start: 116390, Stop: 116770, Start Num: 17
Candidate Starts for Halldule_205:
(Start: 17 @116390 has 181 MA's), (44, 116642), (47, 116687), (48, 116690),

Gene: HyRo_200 Start: 117514, Stop: 117894, Start Num: 17
Candidate Starts for HyRo_200:
(Start: 17 @117514 has 181 MA's), (44, 117766), (47, 117811), (48, 117814),

Gene: I3_222 Start: 119959, Stop: 120339, Start Num: 17
Candidate Starts for I3_222:

(Start: 17 @119959 has 181 MA's), (44, 120211), (47, 120256), (48, 120259),

Gene: IkeLoa_204 Start: 116915, Stop: 117295, Start Num: 17

Candidate Starts for IkeLoa_204:

(Start: 17 @116915 has 181 MA's), (44, 117167), (47, 117212), (48, 117215),

Gene: InigoMontoya_215 Start: 117924, Stop: 118304, Start Num: 17

Candidate Starts for InigoMontoya_215:

(Start: 17 @117924 has 181 MA's), (44, 118176), (47, 118221), (48, 118224),

Gene: InterFolia_215 Start: 119622, Stop: 120002, Start Num: 17

Candidate Starts for InterFolia_215:

(Start: 17 @119622 has 181 MA's), (44, 119874), (47, 119919), (48, 119922),

Gene: Iota_207 Start: 117609, Stop: 117989, Start Num: 17

Candidate Starts for Iota_207:

(Start: 17 @117609 has 181 MA's), (44, 117861), (47, 117906), (48, 117909),

Gene: Issimir_205 Start: 117562, Stop: 117942, Start Num: 17

Candidate Starts for Issimir_205:

(Start: 17 @117562 has 181 MA's), (44, 117814), (47, 117859), (48, 117862),

Gene: Izajani_210 Start: 118431, Stop: 118811, Start Num: 17

Candidate Starts for Izajani_210:

(Start: 17 @118431 has 181 MA's), (44, 118683), (47, 118728), (48, 118731),

Gene: JPickles_208 Start: 115909, Stop: 116289, Start Num: 17

Candidate Starts for JPickles_208:

(Start: 17 @115909 has 181 MA's), (44, 116161), (47, 116206), (48, 116209),

Gene: Janiyra_215 Start: 118149, Stop: 118529, Start Num: 17

Candidate Starts for Janiyra_215:

(Start: 17 @118149 has 181 MA's), (44, 118401), (47, 118446), (48, 118449),

Gene: JayJay_214 Start: 118846, Stop: 119226, Start Num: 17

Candidate Starts for JayJay_214:

(Start: 17 @118846 has 181 MA's), (44, 119098), (47, 119143), (48, 119146),

Gene: Jaygup_208 Start: 116970, Stop: 117350, Start Num: 17

Candidate Starts for Jaygup_208:

(Start: 17 @116970 has 181 MA's), (44, 117222), (47, 117267), (48, 117270),

Gene: Jedediah_212 Start: 118023, Stop: 118403, Start Num: 17

Candidate Starts for Jedediah_212:

(Start: 17 @118023 has 181 MA's), (44, 118275), (47, 118320), (48, 118323),

Gene: Jemmno_211 Start: 116852, Stop: 117232, Start Num: 17

Candidate Starts for Jemmno_211:

(Start: 17 @116852 has 181 MA's), (44, 117104), (47, 117149), (48, 117152),

Gene: Jessibeth14_212 Start: 119040, Stop: 119420, Start Num: 17

Candidate Starts for Jessibeth14_212:

(Start: 17 @119040 has 181 MA's), (44, 119292), (47, 119337), (48, 119340),

Gene: Jezreel_209 Start: 118110, Stop: 118490, Start Num: 17
Candidate Starts for Jezreel_209:
(Start: 17 @118110 has 181 MA's), (44, 118362), (47, 118407), (48, 118410),

Gene: JigglyPuff_219 Start: 120420, Stop: 120800, Start Num: 17
Candidate Starts for JigglyPuff_219:
(Start: 17 @120420 has 181 MA's), (44, 120672), (47, 120717), (48, 120720),

Gene: JulietS_203 Start: 115141, Stop: 115521, Start Num: 17
Candidate Starts for JulietS_203:
(Start: 17 @115141 has 181 MA's), (44, 115393), (47, 115438), (48, 115441),

Gene: JustHall_206 Start: 117056, Stop: 117436, Start Num: 17
Candidate Starts for JustHall_206:
(Start: 17 @117056 has 181 MA's), (44, 117308), (47, 117353), (48, 117356),

Gene: Kamryn_211 Start: 118686, Stop: 119066, Start Num: 17
Candidate Starts for Kamryn_211:
(Start: 17 @118686 has 181 MA's), (44, 118938), (47, 118983), (48, 118986),

Gene: Kboogie_216 Start: 117714, Stop: 118094, Start Num: 17
Candidate Starts for Kboogie_216:
(Start: 17 @117714 has 181 MA's), (44, 117966), (47, 118011), (48, 118014),

Gene: Khaleesi_211 Start: 118507, Stop: 118887, Start Num: 17
Candidate Starts for Khaleesi_211:
(Start: 17 @118507 has 181 MA's), (44, 118759), (47, 118804), (48, 118807),

Gene: Koguma_211 Start: 117367, Stop: 117747, Start Num: 17
Candidate Starts for Koguma_211:
(Start: 17 @117367 has 181 MA's), (44, 117619), (47, 117664), (48, 117667),

Gene: LRRHood_205 Start: 117712, Stop: 118092, Start Num: 17
Candidate Starts for LRRHood_205:
(Start: 17 @117712 has 181 MA's), (44, 117964), (47, 118009), (48, 118012),

Gene: Labradorite_210 Start: 116461, Stop: 116841, Start Num: 17
Candidate Starts for Labradorite_210:
(Start: 17 @116461 has 181 MA's), (44, 116713), (47, 116758), (48, 116761),

Gene: Latch_212 Start: 117260, Stop: 117640, Start Num: 17
Candidate Starts for Latch_212:
(Start: 17 @117260 has 181 MA's), (44, 117512), (47, 117557), (48, 117560),

Gene: Lee7_212 Start: 119887, Stop: 120267, Start Num: 17
Candidate Starts for Lee7_212:
(Start: 17 @119887 has 181 MA's), (44, 120139), (47, 120184), (48, 120187),

Gene: Lethe_212 Start: 119150, Stop: 119530, Start Num: 17
Candidate Starts for Lethe_212:
(Start: 17 @119150 has 181 MA's), (44, 119402), (47, 119447), (48, 119450),

Gene: LifeSavor_211 Start: 117785, Stop: 118165, Start Num: 17
Candidate Starts for LifeSavor_211:
(Start: 17 @117785 has 181 MA's), (44, 118037), (47, 118082), (48, 118085),

Gene: LinStu_211 Start: 117999, Stop: 118379, Start Num: 17
Candidate Starts for LinStu_211:
(Start: 17 @117999 has 181 MA's), (44, 118251), (47, 118296), (48, 118299),

Gene: Littleton_215 Start: 118497, Stop: 118877, Start Num: 17
Candidate Starts for Littleton_215:
(Start: 17 @118497 has 181 MA's), (44, 118749), (47, 118794), (48, 118797),

Gene: Loanshark_209 Start: 117822, Stop: 118202, Start Num: 17
Candidate Starts for Loanshark_209:
(Start: 17 @117822 has 181 MA's), (44, 118074), (47, 118119), (48, 118122),

Gene: LolaVinca_210 Start: 119052, Stop: 119432, Start Num: 17
Candidate Starts for LolaVinca_210:
(Start: 17 @119052 has 181 MA's), (44, 119304), (47, 119349), (48, 119352),

Gene: LookingGlass_211 Start: 118017, Stop: 118397, Start Num: 17
Candidate Starts for LookingGlass_211:
(Start: 17 @118017 has 181 MA's), (44, 118269), (47, 118314), (48, 118317),

Gene: LordLeafolot_213 Start: 118665, Stop: 119045, Start Num: 17
Candidate Starts for LordLeafolot_213:
(Start: 17 @118665 has 181 MA's), (44, 118917), (47, 118962), (48, 118965),

Gene: LuckySocke_157 Start: 83522, Stop: 83869, Start Num: 23
Candidate Starts for LuckySocke_157:
(Start: 23 @83522 has 6 MA's), (Start: 28 @83573 has 1 MA's), (40, 83726), (43, 83750), (45, 83762),
(50, 83807), (51, 83813), (55, 83861),

Gene: Lukilu_203 Start: 118722, Stop: 119102, Start Num: 17
Candidate Starts for Lukilu_203:
(Start: 17 @118722 has 181 MA's), (44, 118974), (47, 119019), (48, 119022),

Gene: Lunareta_210 Start: 119358, Stop: 119738, Start Num: 17
Candidate Starts for Lunareta_210:
(Start: 17 @119358 has 181 MA's), (44, 119610), (47, 119655), (48, 119658),

Gene: Maby2021_212 Start: 118951, Stop: 119331, Start Num: 17
Candidate Starts for Maby2021_212:
(Start: 17 @118951 has 181 MA's), (44, 119203), (47, 119248), (48, 119251),

Gene: Mangeria_213 Start: 119053, Stop: 119433, Start Num: 17
Candidate Starts for Mangeria_213:
(Start: 17 @119053 has 181 MA's), (44, 119305), (47, 119350), (48, 119353),

Gene: Matsumoto_210 Start: 117702, Stop: 118082, Start Num: 17
Candidate Starts for Matsumoto_210:
(Start: 17 @117702 has 181 MA's), (44, 117954), (47, 117999), (48, 118002),

Gene: Maturis_209 Start: 118214, Stop: 118594, Start Num: 17
Candidate Starts for Maturis_209:
(Start: 17 @118214 has 181 MA's), (44, 118466), (47, 118511), (48, 118514),

Gene: McGee_211 Start: 116896, Stop: 117276, Start Num: 17
Candidate Starts for McGee_211:
(Start: 17 @116896 has 181 MA's), (44, 117148), (47, 117193), (48, 117196),

Gene: McWolfish_209 Start: 117718, Stop: 118098, Start Num: 17
Candidate Starts for McWolfish_209:
(Start: 17 @117718 has 181 MA's), (44, 117970), (47, 118015), (48, 118018),

Gene: Megamind_209 Start: 118009, Stop: 118389, Start Num: 17
Candidate Starts for Megamind_209:
(Start: 17 @118009 has 181 MA's), (44, 118261), (47, 118306), (48, 118309),

Gene: Melpomini_207 Start: 116794, Stop: 117174, Start Num: 17
Candidate Starts for Melpomini_207:
(Start: 17 @116794 has 181 MA's), (44, 117046), (47, 117091), (48, 117094),

Gene: MikeLiesIn_214 Start: 119145, Stop: 119525, Start Num: 17
Candidate Starts for MikeLiesIn_214:
(Start: 17 @119145 has 181 MA's), (44, 119397), (47, 119442), (48, 119445),

Gene: Mikro_208 Start: 119694, Stop: 120074, Start Num: 17
Candidate Starts for Mikro_208:
(Start: 17 @119694 has 181 MA's), (44, 119946), (47, 119991), (48, 119994),

Gene: MoMoMixon_210 Start: 118184, Stop: 118564, Start Num: 17
Candidate Starts for MoMoMixon_210:
(Start: 17 @118184 has 181 MA's), (44, 118436), (47, 118481), (48, 118484),

Gene: Moby_208 Start: 117159, Stop: 117539, Start Num: 17
Candidate Starts for Moby_208:
(Start: 17 @117159 has 181 MA's), (44, 117411), (47, 117456), (48, 117459),

Gene: Moiqah_207 Start: 117136, Stop: 117516, Start Num: 17
Candidate Starts for Moiqah_207:
(Start: 17 @117136 has 181 MA's), (44, 117388), (47, 117433), (48, 117436),

Gene: Momo_213 Start: 117260, Stop: 117640, Start Num: 17
Candidate Starts for Momo_213:
(Start: 17 @117260 has 181 MA's), (44, 117512), (47, 117557), (48, 117560),

Gene: Montpel_210 Start: 119356, Stop: 119736, Start Num: 17
Candidate Starts for Montpel_210:
(Start: 17 @119356 has 181 MA's), (44, 119608), (47, 119653), (48, 119656),

Gene: Morizzled23_209 Start: 116627, Stop: 117007, Start Num: 17
Candidate Starts for Morizzled23_209:
(Start: 17 @116627 has 181 MA's), (44, 116879), (47, 116924), (48, 116927),

Gene: Myrna_195 Start: 114740, Stop: 115093, Start Num: 18

Candidate Starts for Myrna_195:

(7, 114482), (8, 114521), (Start: 18 @114740 has 7 MA's), (40, 114956), (44, 114983), (47, 115028), (49, 115043), (50, 115049),

Gene: Naija_213 Start: 117963, Stop: 118343, Start Num: 17

Candidate Starts for Naija_213:

(Start: 17 @117963 has 181 MA's), (44, 118215), (47, 118260), (48, 118263),

Gene: Napoleon13_209 Start: 116991, Stop: 117371, Start Num: 17

Candidate Starts for Napoleon13_209:

(Start: 17 @116991 has 181 MA's), (44, 117243), (47, 117288), (48, 117291),

Gene: Nappy_213 Start: 119657, Stop: 120037, Start Num: 17

Candidate Starts for Nappy_213:

(Start: 17 @119657 has 181 MA's), (44, 119909), (47, 119954), (48, 119957),

Gene: Naval22_219 Start: 119740, Stop: 120120, Start Num: 17

Candidate Starts for Naval22_219:

(Start: 17 @119740 has 181 MA's), (44, 119992), (47, 120037), (48, 120040),

Gene: NedWong_211 Start: 118396, Stop: 118776, Start Num: 17

Candidate Starts for NedWong_211:

(Start: 17 @118396 has 181 MA's), (44, 118648), (47, 118693), (48, 118696),

Gene: Ngannou_209 Start: 116242, Stop: 116622, Start Num: 17

Candidate Starts for Ngannou_209:

(Start: 17 @116242 has 181 MA's), (44, 116494), (47, 116539), (48, 116542),

Gene: Nidhogg_213 Start: 118789, Stop: 119169, Start Num: 17

Candidate Starts for Nidhogg_213:

(Start: 17 @118789 has 181 MA's), (44, 119041), (47, 119086), (48, 119089),

Gene: NoodleTree_218 Start: 118696, Stop: 119076, Start Num: 17

Candidate Starts for NoodleTree_218:

(Start: 17 @118696 has 181 MA's), (44, 118948), (47, 118993), (48, 118996),

Gene: Norm_212 Start: 118698, Stop: 119078, Start Num: 17

Candidate Starts for Norm_212:

(Start: 17 @118698 has 181 MA's), (44, 118950), (47, 118995), (48, 118998),

Gene: NuevoMundo_215 Start: 120250, Stop: 120630, Start Num: 17

Candidate Starts for NuevoMundo_215:

(Start: 17 @120250 has 181 MA's), (44, 120502), (47, 120547), (48, 120550),

Gene: OrediggerDelux_208 Start: 118928, Stop: 119308, Start Num: 17

Candidate Starts for OrediggerDelux_208:

(Start: 17 @118928 has 181 MA's), (44, 119180), (47, 119225), (48, 119228),

Gene: Park1214_166 Start: 84441, Stop: 84791, Start Num: 23

Candidate Starts for Park1214_166:

(13, 84309), (Start: 23 @84441 has 6 MA's), (27, 84480), (Start: 28 @84492 has 1 MA's), (40, 84645), (43, 84669), (45, 84681), (50, 84726), (53, 84741),

Gene: ParkTD_211 Start: 118260, Stop: 118640, Start Num: 17
Candidate Starts for ParkTD_211:
(Start: 17 @118260 has 181 MA's), (44, 118512), (47, 118557), (48, 118560),

Gene: Patter_213 Start: 117274, Stop: 117654, Start Num: 17
Candidate Starts for Patter_213:
(Start: 17 @117274 has 181 MA's), (44, 117526), (47, 117571), (48, 117574),

Gene: Phabba_206 Start: 114708, Stop: 115061, Start Num: 18
Candidate Starts for Phabba_206:
(14, 114612), (Start: 18 @114708 has 7 MA's), (37, 114897), (38, 114912), (40, 114924), (47, 114996),
(49, 115011), (50, 115017),

Gene: PharkleMinkus_214 Start: 117816, Stop: 118196, Start Num: 17
Candidate Starts for PharkleMinkus_214:
(Start: 17 @117816 has 181 MA's), (44, 118068), (47, 118113), (48, 118116),

Gene: Phlegm_216 Start: 117963, Stop: 118343, Start Num: 17
Candidate Starts for Phlegm_216:
(Start: 17 @117963 has 181 MA's), (44, 118215), (47, 118260), (48, 118263),

Gene: Phox_213 Start: 118918, Stop: 119298, Start Num: 17
Candidate Starts for Phox_213:
(Start: 17 @118918 has 181 MA's), (44, 119170), (47, 119215), (48, 119218),

Gene: Phrappuccino_123 Start: 91183, Stop: 91551, Start Num: 21
Candidate Starts for Phrappuccino_123:
(12, 91066), (16, 91156), (Start: 21 @91183 has 2 MA's), (30, 91309), (36, 91372), (39, 91399), (42,
91423),

Gene: Phusco_210 Start: 116795, Stop: 117175, Start Num: 17
Candidate Starts for Phusco_210:
(Start: 17 @116795 has 181 MA's), (44, 117047), (47, 117092), (48, 117095),

Gene: Pier_213 Start: 119795, Stop: 120175, Start Num: 17
Candidate Starts for Pier_213:
(Start: 17 @119795 has 181 MA's), (44, 120047), (47, 120092), (48, 120095),

Gene: Pinkcreek_196 Start: 117171, Stop: 117551, Start Num: 17
Candidate Starts for Pinkcreek_196:
(Start: 17 @117171 has 181 MA's), (44, 117423), (47, 117468), (48, 117471),

Gene: Pio_220 Start: 120987, Stop: 121367, Start Num: 17
Candidate Starts for Pio_220:
(Start: 17 @120987 has 181 MA's), (44, 121239), (47, 121284), (48, 121287),

Gene: Pivoine_213 Start: 117963, Stop: 118343, Start Num: 17
Candidate Starts for Pivoine_213:
(Start: 17 @117963 has 181 MA's), (44, 118215), (47, 118260), (48, 118263),

Gene: Pleione_216 Start: 118738, Stop: 119118, Start Num: 17
Candidate Starts for Pleione_216:
(Start: 17 @118738 has 181 MA's), (44, 118990), (47, 119035), (48, 119038),

Gene: Primadonna_207 Start: 117624, Stop: 118004, Start Num: 17
Candidate Starts for Primadonna_207:
(Start: 17 @117624 has 181 MA's), (44, 117876), (47, 117921), (48, 117924),

Gene: Pupper_155 Start: 110759, Stop: 111118, Start Num: 18
Candidate Starts for Pupper_155:
(3, 110315), (6, 110471), (Start: 18 @110759 has 7 MA's), (32, 110906), (47, 111059), (54, 111098),

Gene: Pupusa_216 Start: 119293, Stop: 119673, Start Num: 17
Candidate Starts for Pupusa_216:
(Start: 17 @119293 has 181 MA's), (44, 119545), (47, 119590), (48, 119593),

Gene: PurduePete_212 Start: 118966, Stop: 119346, Start Num: 17
Candidate Starts for PurduePete_212:
(Start: 17 @118966 has 181 MA's), (44, 119218), (47, 119263), (48, 119266),

Gene: QBert_204 Start: 117319, Stop: 117699, Start Num: 17
Candidate Starts for QBert_204:
(Start: 17 @117319 has 181 MA's), (44, 117571), (47, 117616), (48, 117619),

Gene: Quasimodo_214 Start: 118589, Stop: 118969, Start Num: 17
Candidate Starts for Quasimodo_214:
(Start: 17 @118589 has 181 MA's), (44, 118841), (47, 118886), (48, 118889),

Gene: Rabinovish_205 Start: 118864, Stop: 119244, Start Num: 17
Candidate Starts for Rabinovish_205:
(Start: 17 @118864 has 181 MA's), (44, 119116), (47, 119161), (48, 119164),

Gene: Rahel_213 Start: 117698, Stop: 118078, Start Num: 17
Candidate Starts for Rahel_213:
(Start: 17 @117698 has 181 MA's), (44, 117950), (47, 117995), (48, 117998),

Gene: RedWattleHog_81 Start: 75777, Stop: 76133, Start Num: 20
Candidate Starts for RedWattleHog_81:
(Start: 20 @75777 has 2 MA's), (25, 75819), (37, 75966), (39, 75990), (45, 76029), (47, 76062), (48, 76065),

Gene: Rizal_204 Start: 116216, Stop: 116596, Start Num: 17
Candidate Starts for Rizal_204:
(Start: 17 @116216 has 181 MA's), (44, 116468), (47, 116513), (48, 116516),

Gene: RoMag_207 Start: 118009, Stop: 118389, Start Num: 17
Candidate Starts for RoMag_207:
(Start: 17 @118009 has 181 MA's), (44, 118261), (47, 118306), (48, 118309),

Gene: Rocha_209 Start: 117452, Stop: 117832, Start Num: 17
Candidate Starts for Rocha_209:
(Start: 17 @117452 has 181 MA's), (44, 117704), (47, 117749), (48, 117752),

Gene: Ronan_208 Start: 116401, Stop: 116781, Start Num: 17
Candidate Starts for Ronan_208:
(Start: 17 @116401 has 181 MA's), (44, 116653), (47, 116698), (48, 116701),

Gene: Roots515_214 Start: 119517, Stop: 119897, Start Num: 17
Candidate Starts for Roots515_214:
(Start: 17 @119517 has 181 MA's), (44, 119769), (47, 119814), (48, 119817),

Gene: SCentae_154 Start: 110913, Stop: 111272, Start Num: 18
Candidate Starts for SCentae_154:
(3, 110469), (6, 110625), (Start: 18 @110913 has 7 MA's), (32, 111060), (47, 111213), (54, 111252),

Gene: SVoro_208 Start: 118311, Stop: 118691, Start Num: 17
Candidate Starts for SVoro_208:
(Start: 17 @118311 has 181 MA's), (44, 118563), (47, 118608), (48, 118611),

Gene: Salacia_212 Start: 118101, Stop: 118481, Start Num: 17
Candidate Starts for Salacia_212:
(Start: 17 @118101 has 181 MA's), (44, 118353), (47, 118398), (48, 118401),

Gene: Sauce_208 Start: 116915, Stop: 117295, Start Num: 17
Candidate Starts for Sauce_208:
(Start: 17 @116915 has 181 MA's), (44, 117167), (47, 117212), (48, 117215),

Gene: ScoobyDoobyDoo_194 Start: 111941, Stop: 112312, Start Num: 18
Candidate Starts for ScoobyDoobyDoo_194:
(9, 111797), (14, 111857), (15, 111884), (Start: 18 @111941 has 7 MA's), (27, 111998), (37, 112130),
(40, 112157), (47, 112229), (49, 112244), (50, 112250),

Gene: ScottMcG_206 Start: 116994, Stop: 117374, Start Num: 17
Candidate Starts for ScottMcG_206:
(Start: 17 @116994 has 181 MA's), (44, 117246), (47, 117291), (48, 117294),

Gene: Sebata_213 Start: 119424, Stop: 119804, Start Num: 17
Candidate Starts for Sebata_213:
(Start: 17 @119424 has 181 MA's), (44, 119676), (47, 119721), (48, 119724),

Gene: Settecandela_123 Start: 91183, Stop: 91551, Start Num: 21
Candidate Starts for Settecandela_123:
(12, 91066), (16, 91156), (Start: 21 @91183 has 2 MA's), (30, 91309), (36, 91372), (39, 91399), (42,
91423),

Gene: Shaqnato_203 Start: 117132, Stop: 117512, Start Num: 17
Candidate Starts for Shaqnato_203:
(Start: 17 @117132 has 181 MA's), (44, 117384), (47, 117429), (48, 117432),

Gene: Shelob_213 Start: 119872, Stop: 120252, Start Num: 17
Candidate Starts for Shelob_213:
(Start: 17 @119872 has 181 MA's), (44, 120124), (47, 120169), (48, 120172),

Gene: ShiaLabeouf_209 Start: 116906, Stop: 117286, Start Num: 17
Candidate Starts for ShiaLabeouf_209:
(Start: 17 @116906 has 181 MA's), (44, 117158), (47, 117203), (48, 117206),

Gene: Shifa_189 Start: 117483, Stop: 117863, Start Num: 17
Candidate Starts for Shifa_189:

(Start: 17 @117483 has 181 MA's), (44, 117735), (47, 117780), (48, 117783),

Gene: Shnickers_210 Start: 116970, Stop: 117350, Start Num: 17

Candidate Starts for Shnickers_210:

(Start: 17 @116970 has 181 MA's), (44, 117222), (47, 117267), (48, 117270),

Gene: Shrimp_214 Start: 119027, Stop: 119407, Start Num: 17

Candidate Starts for Shrimp_214:

(Start: 17 @119027 has 181 MA's), (44, 119279), (47, 119324), (48, 119327),

Gene: SilverDipper_216 Start: 118519, Stop: 118899, Start Num: 17

Candidate Starts for SilverDipper_216:

(Start: 17 @118519 has 181 MA's), (44, 118771), (47, 118816), (48, 118819),

Gene: Skog_215 Start: 140386, Stop: 140751, Start Num: 18

Candidate Starts for Skog_215:

(10, 140269), (11, 140272), (Start: 18 @140386 has 7 MA's), (31, 140530), (32, 140533), (38, 140602), (41, 140632), (42, 140635), (46, 140683),

Gene: SmallFry_212 Start: 117064, Stop: 117444, Start Num: 17

Candidate Starts for SmallFry_212:

(Start: 17 @117064 has 181 MA's), (44, 117316), (47, 117361), (48, 117364),

Gene: SoilZilla_207 Start: 117619, Stop: 117999, Start Num: 17

Candidate Starts for SoilZilla_207:

(Start: 17 @117619 has 181 MA's), (44, 117871), (47, 117916), (48, 117919),

Gene: Spec_207 Start: 117255, Stop: 117635, Start Num: 17

Candidate Starts for Spec_207:

(Start: 17 @117255 has 181 MA's), (44, 117507), (47, 117552), (48, 117555),

Gene: Specks_216 Start: 119373, Stop: 119753, Start Num: 17

Candidate Starts for Specks_216:

(Start: 17 @119373 has 181 MA's), (44, 119625), (47, 119670), (48, 119673),

Gene: Sprinklers_210 Start: 117622, Stop: 118002, Start Num: 17

Candidate Starts for Sprinklers_210:

(Start: 17 @117622 has 181 MA's), (44, 117874), (47, 117919), (48, 117922),

Gene: Spud_206 Start: 117334, Stop: 117714, Start Num: 17

Candidate Starts for Spud_206:

(Start: 17 @117334 has 181 MA's), (44, 117586), (47, 117631), (48, 117634),

Gene: SrishMeg2525_209 Start: 118498, Stop: 118878, Start Num: 17

Candidate Starts for SrishMeg2525_209:

(Start: 17 @118498 has 181 MA's), (44, 118750), (47, 118795), (48, 118798),

Gene: StephanieG_208 Start: 118532, Stop: 118912, Start Num: 17

Candidate Starts for StephanieG_208:

(Start: 17 @118532 has 181 MA's), (44, 118784), (47, 118829), (48, 118832),

Gene: Stormageddon_78 Start: 75758, Stop: 76114, Start Num: 20

Candidate Starts for Stormageddon_78:

(Start: 20 @75758 has 2 MA's), (25, 75800), (37, 75947), (39, 75971), (45, 76010), (47, 76043), (48, 76046),

Gene: Stubby_196 Start: 117374, Stop: 117754, Start Num: 17
Candidate Starts for Stubby_196:
(Start: 17 @117374 has 181 MA's), (44, 117626), (47, 117671), (48, 117674),

Gene: StubbySaigey_217 Start: 118053, Stop: 118433, Start Num: 17
Candidate Starts for StubbySaigey_217:
(Start: 17 @118053 has 181 MA's), (44, 118305), (47, 118350), (48, 118353),

Gene: Substance289_209 Start: 117112, Stop: 117492, Start Num: 17
Candidate Starts for Substance289_209:
(Start: 17 @117112 has 181 MA's), (44, 117364), (47, 117409), (48, 117412),

Gene: Tainan_213 Start: 118392, Stop: 118772, Start Num: 17
Candidate Starts for Tainan_213:
(Start: 17 @118392 has 181 MA's), (44, 118644), (47, 118689), (48, 118692),

Gene: Talos_159 Start: 83424, Stop: 83771, Start Num: 23
Candidate Starts for Talos_159:
(Start: 23 @83424 has 6 MA's), (Start: 28 @83475 has 1 MA's), (43, 83652), (45, 83664), (50, 83709), (51, 83715), (55, 83763),

Gene: Teardrop_209 Start: 116566, Stop: 116946, Start Num: 17
Candidate Starts for Teardrop_209:
(Start: 17 @116566 has 181 MA's), (44, 116818), (47, 116863), (48, 116866),

Gene: TinyTim_210 Start: 117347, Stop: 117727, Start Num: 17
Candidate Starts for TinyTim_210:
(Start: 17 @117347 has 181 MA's), (44, 117599), (47, 117644), (48, 117647),

Gene: Tonenili_234 Start: 124152, Stop: 124532, Start Num: 17
Candidate Starts for Tonenili_234:
(1, 123621), (4, 123852), (5, 123855), (Start: 17 @124152 has 181 MA's), (44, 124404), (47, 124449), (48, 124452), (52, 124479),

Gene: Tortoise16_210 Start: 117809, Stop: 118189, Start Num: 17
Candidate Starts for Tortoise16_210:
(Start: 17 @117809 has 181 MA's), (44, 118061), (47, 118106), (48, 118109),

Gene: Trinitium_208 Start: 117094, Stop: 117474, Start Num: 17
Candidate Starts for Trinitium_208:
(Start: 17 @117094 has 181 MA's), (44, 117346), (47, 117391), (48, 117394),

Gene: Turret_205 Start: 116676, Stop: 117056, Start Num: 17
Candidate Starts for Turret_205:
(Start: 17 @116676 has 181 MA's), (44, 116928), (47, 116973), (48, 116976),

Gene: Tyke_210 Start: 119176, Stop: 119556, Start Num: 17
Candidate Starts for Tyke_210:
(Start: 17 @119176 has 181 MA's), (44, 119428), (47, 119473), (48, 119476),

Gene: ValleyTerrace_213 Start: 117260, Stop: 117640, Start Num: 17
Candidate Starts for ValleyTerrace_213:
(Start: 17 @117260 has 181 MA's), (44, 117512), (47, 117557), (48, 117560),

Gene: Vortrix_232 Start: 122939, Stop: 123319, Start Num: 17
Candidate Starts for Vortrix_232:
(Start: 17 @122939 has 181 MA's), (44, 123191), (47, 123236), (48, 123239), (52, 123266),

Gene: Wally_210 Start: 117244, Stop: 117624, Start Num: 17
Candidate Starts for Wally_210:
(Start: 17 @117244 has 181 MA's), (44, 117496), (47, 117541), (48, 117544),

Gene: Willis_213 Start: 118158, Stop: 118538, Start Num: 17
Candidate Starts for Willis_213:
(Start: 17 @118158 has 181 MA's), (44, 118410), (47, 118455), (48, 118458),

Gene: Yassified_209 Start: 117599, Stop: 117979, Start Num: 17
Candidate Starts for Yassified_209:
(Start: 17 @117599 has 181 MA's), (44, 117851), (47, 117896), (48, 117899),

Gene: YemiJoy2021_213 Start: 118914, Stop: 119294, Start Num: 17
Candidate Starts for YemiJoy2021_213:
(Start: 17 @118914 has 181 MA's), (44, 119166), (47, 119211), (48, 119214),

Gene: YoungMoneyMata_211 Start: 117728, Stop: 118108, Start Num: 17
Candidate Starts for YoungMoneyMata_211:
(Start: 17 @117728 has 181 MA's), (44, 117980), (47, 118025), (48, 118028),

Gene: Yucca_212 Start: 118906, Stop: 119286, Start Num: 17
Candidate Starts for Yucca_212:
(Start: 17 @118906 has 181 MA's), (44, 119158), (47, 119203), (48, 119206),

Gene: Zalkecks_211 Start: 117987, Stop: 118367, Start Num: 17
Candidate Starts for Zalkecks_211:
(Start: 17 @117987 has 181 MA's), (44, 118239), (47, 118284), (48, 118287),

Gene: Zeenon_214 Start: 118558, Stop: 118938, Start Num: 17
Candidate Starts for Zeenon_214:
(Start: 17 @118558 has 181 MA's), (44, 118810), (47, 118855), (48, 118858),

Gene: ZygoTaiga_209 Start: 119178, Stop: 119558, Start Num: 17
Candidate Starts for ZygoTaiga_209:
(Start: 17 @119178 has 181 MA's), (44, 119430), (47, 119475), (48, 119478),