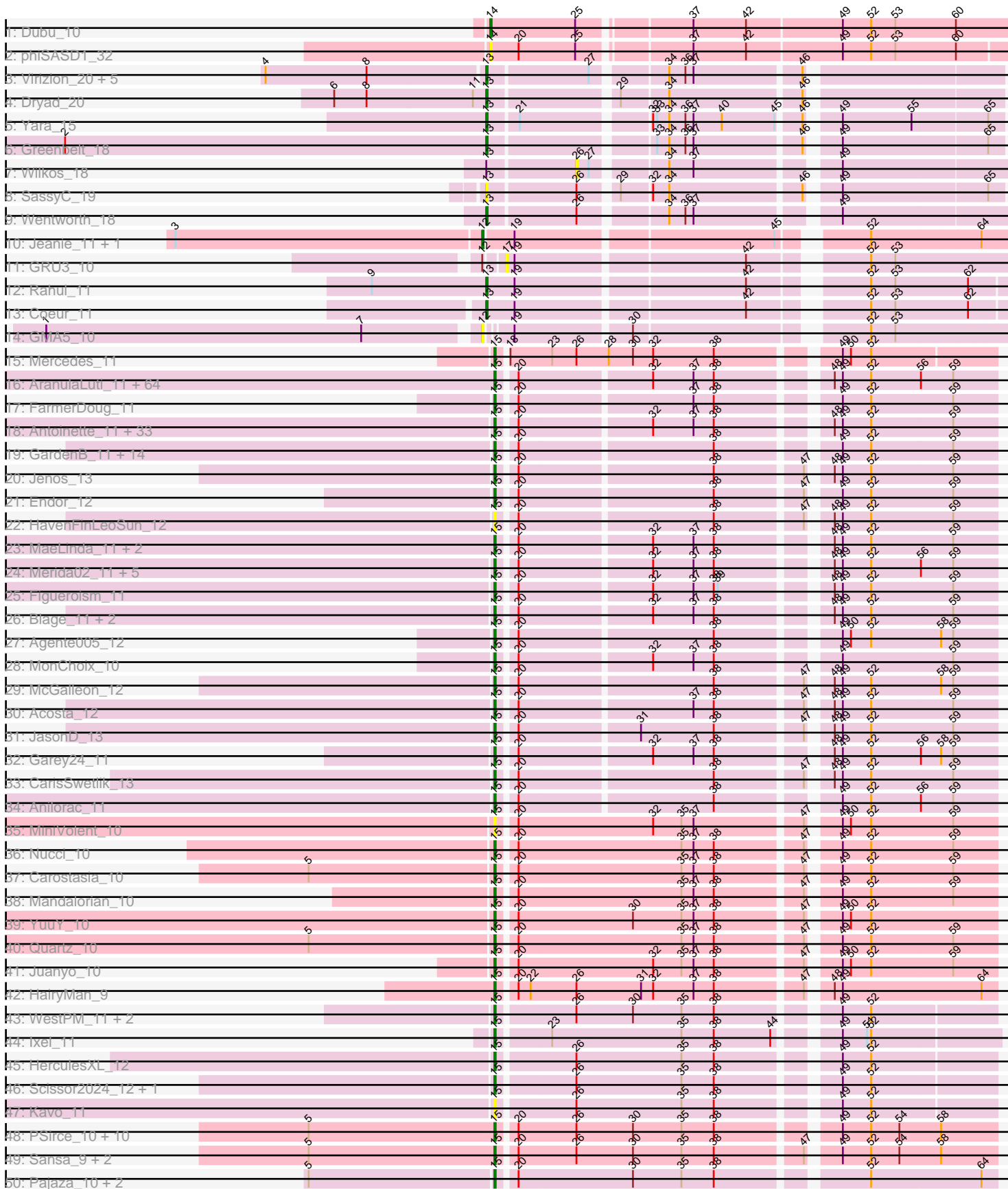
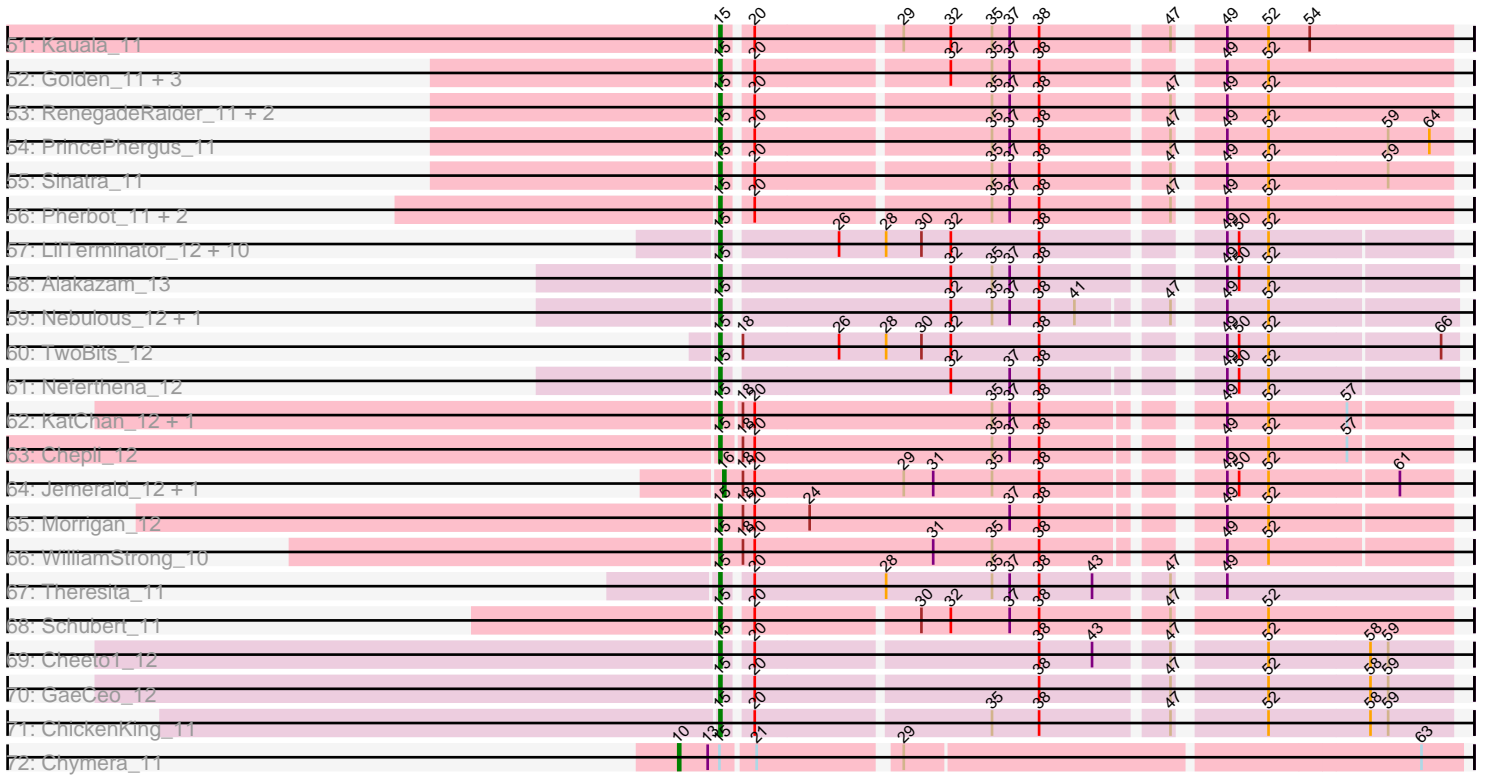


Pham 308018



Pham 308018



Note: Tracks are now grouped by subcluster and scaled. Switching in subcluster is indicated by changes in track color. Track scale is now set by default to display the region 30 bp upstream of start 1 to 30 bp downstream of the last possible start. If this default region is judged to be packed too tightly with annotated starts, the track will be further scaled to only show that region of the ORF with annotated starts. This action will be indicated by adding "Zoomed" to the title. For starts, yellow indicates the location of called starts comprised solely of Glimmer/GeneMark auto-annotations, green indicates the location of called starts with at least 1 manual gene annotation.

Pham 308018 Report

This analysis was run 06/27/26 on database version 652.

Pham number 308018 has 235 members, 20 are drafts.

Phages represented in each track:

- Track 1 : Dubu_10
- Track 2 : phiSASD1_32
- Track 3 : Virizion_20, Gibson_18, ShakeNBake_18, PHTowN_18, Rooney_18, Lizz_18
- Track 4 : Dryad_20
- Track 5 : Yara_15
- Track 6 : Greenbelt_18
- Track 7 : Wilkos_18
- Track 8 : SassyC_19
- Track 9 : Wentworth_18
- Track 10 : Jeanie_11, McGonagall_11
- Track 11 : GRU3_10
- Track 12 : Rahul_11
- Track 13 : Coeur_11
- Track 14 : GMA5_10
- Track 15 : Mercedes_11
- Track 16 : AranulaLuti_11, Ilzat_11, SJay_11, JasperRussell_11, Janus167_11, HanSolo_11, Duocatuli_11, Phriends_11, JeriBeth_11, Byron23_11, Gargoyle_11, RosieMae_11, Rog141_11, Sedgewig_11, MrWorldwide_11, Nagem_11, Tenda_11, Shee_11, Christoph_11, Gubbabump_11, Benjal Lauren_11, NickSell_11, CoraRita_11, Martin_12, Kurt1_11, HankSprout_12, Kale_11, Bandik_11, Chako_11, Pherferi_11, Ludgate_11, HungryHenry_11, TatarkaPM_11, Exploradora_11, PhredFlintston_11, TinSulphur_11, Teagan_11, StingRay_11, Riyhil_11, Kouch_11, Inventa_11, KannH_11, Jerbirus_11, Dothraki_11, Oats_11, SolidSnake_11, Asta_11, ManRay_11, Gershwin_11, Pocket_11, TeddyBear_11, OldNelly_11, StirfryIV_11, KellyGreen_11, BeautPeep30_11, ParleG_11, Aubergine_11, Stanktossa_11, Symere_11, Rappheph_11, Clancy_11, Espinosa_11, Winzigespinne_11, Papafritta_11, Phireproof_11
- Track 17 : FarmerDoug_11
- Track 18 : Antoinette_11, Gelo_11, GoingMerry_11, PuppyEggo_11, Raptor_11, Baines_11, Calix_11, ShaiHulud_11, Den3_11, AlexAdler_11, Etta_11, Lovelyunicorn_11, Peep_11, Convict_11, Chamuel_11, Renzie_11, Ioannes_11, Knox_11, Superfresh_11, Erla_11, Greys_11, WildNOut_11, SonOfLevi_11, Strathdee_11, Dave_11, Klimt_11, Nattles_11, BonesMcCoy_11, Velene_11, Vispistious_11, Thorongil_11, AxiPup_11, Alyxandracam_11, Oxtober96_11
- Track 19 : GardenB_11, Etna_11, Peppino_11, BeeBee8_12, Raccoon_11, Leafus_11, KingJulien_11, Hamlet_11, Soror1_11, Balsa_11, Stormbreaker8_11,

Redfield_11, Schnapsidee_11, PhillyPhantom_11, GoneGirl_12

- Track 20 : Jenos_13
- Track 21 : Endor_12
- Track 22 : HavenFinLeoSun_12
- Track 23 : MaeLinda_11, Zada_11, Robinson_11
- Track 24 : Merida02_11, Delphidian_11, Bonino_11, SoilGremlin_11, Phiderman_11, MillyPhilly_11
- Track 25 : Figueroism_11
- Track 26 : Blage_11, Thompsone_11, BigRedClifford_11
- Track 27 : Agente005_12
- Track 28 : MonChoix_10
- Track 29 : McGalleon_12
- Track 30 : Acosta_12
- Track 31 : JasonD_13
- Track 32 : Garey24_11
- Track 33 : CarisSwetlik_13
- Track 34 : Anilorac_11
- Track 35 : MiniVolent_10
- Track 36 : Nucci_10
- Track 37 : Carostasia_10
- Track 38 : Mandalorian_10
- Track 39 : YuuY_10
- Track 40 : Quartz_10
- Track 41 : Juanyo_10
- Track 42 : HairyMan_9
- Track 43 : WestPM_11, Penta_11, Schimmels22_12
- Track 44 : Ixel_11
- Track 45 : HerculesXL_12
- Track 46 : Scissor2024_12, Tinyman4_12
- Track 47 : Kavo_11
- Track 48 : PSirce_10, ChikPic_10, Finny_10, Eleri_10, Glamour_9, MCubed_10, Xebius_9, Shamu_10, Saratos_10, Phanita_10, Zenitsu_10
- Track 49 : Sansa_9, ColaCorta_10, Andromedas_10
- Track 50 : Pajaza_10, Pikmin_10, Casey_10
- Track 51 : Kauala_11
- Track 52 : Golden_11, Guetzie_11, Lucky3_11, SirVictor_11
- Track 53 : RenegadeRaider_11, Jingles_11, BouleyBill_11
- Track 54 : PrincePhergus_11
- Track 55 : Sinatra_11
- Track 56 : Pherbot_11, Bustleton_11, Koji_11
- Track 57 : LilTerminator_12, Wardwill_14, Hasitha_12, CaptainRex_12, Greenlvy_12, Zepp_13, Librie_12, QuadZero_12, Zayuliv_12, Fulton_12, BaronJohn_12
- Track 58 : Alakazam_13
- Track 59 : Nebulous_12, Clock_12
- Track 60 : TwoBits_12
- Track 61 : Neferthena_12
- Track 62 : KatChan_12, Luna18_12
- Track 63 : Chepli_12
- Track 64 : Jemerald_12, Juicer_12
- Track 65 : Morigan_12
- Track 66 : WilliamStrong_10
- Track 67 : Theresita_11

- Track 68 : Schubert_11
- Track 69 : Cheeto1_12
- Track 70 : GaeCeo_12
- Track 71 : ChickenKing_11
- Track 72 : Chymera_11

Summary of Final Annotations (See graph section above for start numbers):

The start number called the most often in the published annotations is 15, it was called in 198 of the 215 non-draft genes in the pham.

Genes that call this "Most Annotated" start:

- Acosta_12, Agente005_12, Alakazam_13, AlexAdler_11, Alyxandracam_11, Andromedas_10, Anilorac_11, Antoinette_11, AranulaLuti_11, Asta_11, Aubergine_11, AxiPup_11, Baines_11, Balsa_11, Bandik_11, BaronJohn_12, BeautPeep30_11, BeeBee8_12, Benjalauren_11, BigRedClifford_11, Blage_11, BonesMcCoy_11, Bonino_11, BouleyBill_11, Bustleton_11, Byron23_11, Calix_11, CaptainRex_12, CarisSwetlik_13, Carostasia_10, Casey_10, Chako_11, Chamuel_11, Cheeto1_12, Chepli_12, ChickenKing_11, ChikPic_10, Christoph_11, Clancy_11, Clock_12, ColaCorta_10, Convict_11, CoraRita_11, Dave_11, Delphidian_11, Den3_11, Dothraki_11, Duocatuli_11, Eleri_10, Endor_12, Erla_11, Espinosa_11, Etna_11, Etta_11, Exploradora_11, FarmerDoug_11, Figueroism_11, Finny_10, Fulton_12, GaeCeo_12, GardenB_11, Garey24_11, Gargoyle_11, Gelo_11, Gershwin_11, Glamour_9, GoingMerry_11, Golden_11, GoneGirl_12, Greenlvy_12, Greys_11, Gubbabump_11, Guetzie_11, HairyMan_9, Hamlet_11, HanSolo_11, HankSprout_12, Hasitha_12, HavenFinLeoSun_12, HerculesXL_12, HungryHenry_11, Ilzat_11, Inventa_11, Ioannes_11, Ixel_11, Janus167_11, JasonD_13, JasperRussell_11, Jenos_13, Jerbirus_11, JeriBeth_11, Jingles_11, Juanyo_10, Kale_11, KannH_11, KatChan_12, Kauala_11, Kavo_11, KellyGreen_11, KingJulien_11, Klimt_11, Knox_11, Koji_11, Kouch_11, Kurt1_11, Leafus_11, Librie_12, LiTerminator_12, Lovelyunicorn_11, Lucky3_11, Ludgate_11, Luna18_12, MCubed_10, MaeLinda_11, ManRay_11, Mandalorian_10, Martin_12, McGalleon_12, Mercedes_11, Merida02_11, MillyPhilly_11, MiniVolent_10, MonChoix_10, Morigan_12, MrWorldwide_11, Nagem_11, Nattles_11, Nebulous_12, Neferthena_12, NickSell_11, Nucci_10, Oats_11, OldNelly_11, Oxtober96_11, PSirce_10, Pajaza_10, Papafritta_11, ParleG_11, Peep_11, Penta_11, Peppino_11, Phanita_10, Pherbot_11, Pherferi_11, Phiderman_11, PhillyPhantom_11, Phireproof_11, PhredFlintston_11, Phriends_11, Pikmin_10, Pocket_11, PrincePhergus_11, PuppyEggo_11, QuadZero_12, Quartz_10, Raccoon_11, Rappheph_11, Raptor_11, Redfield_11, RenegadeRaider_11, Renzie_11, Riyhil_11, Robinson_11, Rog141_11, RosieMae_11, SJay_11, Sansa_9, Saratos_10, Schimmels22_12, Schnapsidee_11, Schubert_11, Scissor2024_12, Sedgewig_11, ShaiHulud_11, Shamu_10, Shee_11, Sinatra_11, SirVictor_11, SoilGremlin_11, SolidSnake_11, SonOfLevi_11, Soror1_11, Stanktossa_11, StingRay_11, StirfryIV_11, Stormbreaker8_11, Strathdee_11, Superfresh_11, Symere_11, TatarkaPM_11, Teagan_11, TeddyBear_11, Tenda_11, Theresita_11, Thompsone_11, Thorongil_11, TinSulphur_11, Tinyman4_12, TwoBits_12, Velene_11, Vispistious_11, Wardwill_14, WestPM_11, WildNOOut_11, WilliamStrong_10, Winzigespinne_11, Xebius_9, YuuY_10, Zada_11, Zayuliv_12, Zenitsu_10, Zepp_13,

Genes that have the "Most Annotated" start but do not call it:

- Chymera_11,

Genes that do not have the "Most Annotated" start:

- Coeur_11, Dryad_20, Dubu_10, GMA5_10, GRU3_10, Gibson_18, Greenbelt_18, Jeanie_11, Jemerald_12, Juicer_12, Lizz_18, McGonagall_11, PHTowN_18, Rahul_11, Rooney_18, SassyC_19, ShakeNBake_18, Virizion_20, Wentworth_18, Wilkos_18, Yara_15, phiSASD1_32,

Summary by start number:

Start 10:

- Found in 1 of 235 (0.4%) of genes in pham
- Manual Annotations of this start: 1 of 215
- Called 100.0% of time when present
- Phage (with cluster) where this start called: Chymera_11 (singleton),

Start 12:

- Found in 4 of 235 (1.7%) of genes in pham
- Manual Annotations of this start: 2 of 215
- Called 75.0% of time when present
- Phage (with cluster) where this start called: GMA5_10 (CW2), Jeanie_11 (CW1), McGonagall_11 (CW1),

Start 13:

- Found in 15 of 235 (6.4%) of genes in pham
- Manual Annotations of this start: 11 of 215
- Called 86.7% of time when present
- Phage (with cluster) where this start called: Coeur_11 (CW2), Dryad_20 (BN), Gibson_18 (BN), Greenbelt_18 (BN), Lizz_18 (BN), PHTowN_18 (BN), Rahul_11 (CW2), Rooney_18 (BN), SassyC_19 (BN), ShakeNBake_18 (BN), Virizion_20 (BN), Wentworth_18 (BN), Yara_15 (BN),

Start 14:

- Found in 2 of 235 (0.9%) of genes in pham
- Manual Annotations of this start: 1 of 215
- Called 100.0% of time when present
- Phage (with cluster) where this start called: Dubu_10 (BJ), phiSASD1_32 (BJ),

Start 15:

- Found in 213 of 235 (90.6%) of genes in pham
- Manual Annotations of this start: 198 of 215
- Called 99.5% of time when present
- Phage (with cluster) where this start called: Acosta_12 (EA1), Agente005_12 (EA1), Alakazam_13 (EA5), AlexAdler_11 (EA1), Alyxandracam_11 (EA1), Andromedas_10 (EA2), Anilorac_11 (EA1), Antoinette_11 (EA1), AranulaLuti_11 (EA1), Asta_11 (EA1), Aubergine_11 (EA1), AxiPup_11 (EA1), Baines_11 (EA1), Balsa_11 (EA1), Bandik_11 (EA1), BaronJohn_12 (EA5), BeautPeep30_11 (EA1), BeeBee8_12 (EA1), Benjalauen_11 (EA1), BigRedClifford_11 (EA1), Blage_11 (EA1), BonesMcCoy_11 (EA1), Bonino_11 (EA1), BouleyBill_11 (EA4), Bustleton_11 (EA4), Byron23_11 (EA1), Calix_11 (EA1), CaptainRex_12 (EA5), CarisSwetlik_13 (EA1), Carostasia_10 (EA10), Casey_10 (EA3), Chako_11 (EA1), Chamuel_11 (EA1), Cheeto1_12 (EA9),

Chepli_12 (EA6), ChickenKing_11 (EA9), ChikPic_10 (EA2), Christoph_11 (EA1), Clancy_11 (EA1), Clock_12 (EA5), ColaCorta_10 (EA2), Convict_11 (EA1), CoraRita_11 (EA1), Dave_11 (EA1), Delphidian_11 (EA1), Den3_11 (EA1), Dothraki_11 (EA1), Duocatuli_11 (EA1), Eleri_10 (EA2), Endor_12 (EA1), Erla_11 (EA1), Espinosa_11 (EA1), Etna_11 (EA1), Etta_11 (EA1), Exploradora_11 (EA1), FarmerDoug_11 (EA1), Figueroism_11 (EA1), Finny_10 (EA2), Fulton_12 (EA5), GaeCeo_12 (EA9), GardenB_11 (EA1), Garey24_11 (EA1), Gargoyle_11 (EA1), Gelo_11 (EA1), Gershwin_11 (EA1), Glamour_9 (EA2), GoingMerry_11 (EA1), Golden_11 (EA4), GoneGirl_12 (EA1), Greenlvy_12 (EA5), Greys_11 (EA1), Gubbabump_11 (EA1), Guetzie_11 (EA4), HairyMan_9 (EA10), Hamlet_11 (EA1), HanSolo_11 (EA1), HankSprout_12 (EA1), Hasitha_12 (EA5), HavenFinLeoSun_12 (EA1), HerculesXL_12 (EA11), HungryHenry_11 (EA1), Ilzat_11 (EA1), Inventa_11 (EA1), Ioannes_11 (EA1), Ixel_11 (EA11), Janus167_11 (EA1), JasonD_13 (EA1), JasperRussell_11 (EA1), Jenos_13 (EA1), Jerbirus_11 (EA1), JeriBeth_11 (EA1), Jingles_11 (EA4), Juanyo_10 (EA10), Kale_11 (EA1), KannH_11 (EA1), KatChan_12 (EA6), Kauala_11 (EA4), Kavo_11 (EA11), KellyGreen_11 (EA1), KingJulien_11 (EA1), Klimt_11 (EA1), Knox_11 (EA1), Koji_11 (EA4), Kouch_11 (EA1), Kurt1_11 (EA1), Leafus_11 (EA1), Librie_12 (EA5), LiTerminator_12 (EA5), Lovelyunicorn_11 (EA1), Lucky3_11 (EA4), Ludgate_11 (EA1), Luna18_12 (EA6), MCubed_10 (EA2), MaeLinda_11 (EA1), ManRay_11 (EA1), Mandalorian_10 (EA10), Martin_12 (EA1), McGalleon_12 (EA1), Mercedes_11 (EA), Merida02_11 (EA1), MillyPhilly_11 (EA1), MiniVolent_10 (EA10), MonChoix_10 (EA1), Morigan_12 (EA6), MrWorldwide_11 (EA1), Nagem_11 (EA1), Nattles_11 (EA1), Nebulous_12 (EA5), Neferthena_12 (EA5), NickSell_11 (EA1), Nucci_10 (EA10), Oats_11 (EA1), OldNelly_11 (EA1), Oxtober96_11 (EA1), PSirce_10 (EA2), Pajaza_10 (EA3), Papafritta_11 (EA1), ParleG_11 (EA1), Peep_11 (EA1), Penta_11 (EA11), Peppino_11 (EA1), Phanita_10 (EA2), Pherbot_11 (EA4), Pherferi_11 (EA1), Phiderman_11 (EA1), PhillyPhantom_11 (EA1), Phireproof_11 (EA1), PhredFlintston_11 (EA1), Phriends_11 (EA1), Pikmin_10 (EA3), Pocket_11 (EA1), PrincePhergus_11 (EA4), PuppyEggo_11 (EA1), QuadZero_12 (EA5), Quartz_10 (EA10), Raccoon_11 (EA1), Rappheph_11 (EA1), Raptor_11 (EA1), Redfield_11 (EA1), RenegadeRaider_11 (EA4), Renzie_11 (EA1), Rihhil_11 (EA1), Robinson_11 (EA1), Rog141_11 (EA1), RosieMae_11 (EA1), SJay_11 (EA1), Sansa_9 (EA2), Saratos_10 (EA2), Schimmels22_12 (EA11), Schnapsidee_11 (EA1), Schubert_11 (EA8), Scissor2024_12 (EA11), Sedgewig_11 (EA1), ShaiHulud_11 (EA1), Shamu_10 (EA2), Shee_11 (EA1), Sinatra_11 (EA4), SirVictor_11 (EA4), SoilGremlin_11 (EA1), SolidSnake_11 (EA1), SonOfLevi_11 (EA1), Soror1_11 (EA1), Stanktossa_11 (EA1), StingRay_11 (EA1), StirfryIV_11 (EA1), Stormbreaker8_11 (EA1), Strathdee_11 (EA1), Superfresh_11 (EA1), Symere_11 (EA1), TatarkaPM_11 (EA1), Teagan_11 (EA1), TeddyBear_11 (EA1), Tenda_11 (EA1), Theresita_11 (EA7), Thompsone_11 (EA1), Thorongil_11 (EA1), TinSulphur_11 (EA1), Tinyman4_12 (EA11), TwoBits_12 (EA5), Velene_11 (EA1), Vispistious_11 (EA1), Wardwill_14 (EA5), WestPM_11 (EA11), WildNOut_11 (EA1), WilliamStrong_10 (EA6), Winzigespinne_11 (EA1), Xebius_9 (EA2), YuuY_10 (EA10), Zada_11 (EA1), Zayuliv_12 (EA5), Zenitsu_10 (EA2), Zepp_13 (EA5),

Start 16:

- Found in 2 of 235 (0.9%) of genes in pham
- Manual Annotations of this start: 2 of 215
- Called 100.0% of time when present
- Phage (with cluster) where this start called: Jemerald_12 (EA6), Juicer_12 (EA6),

Start 17:

- Found in 1 of 235 (0.4%) of genes in pham
- No Manual Annotations of this start.
- Called 100.0% of time when present
- Phage (with cluster) where this start called: GRU3_10 (CW2),

Start 26:

- Found in 38 of 235 (16.2%) of genes in pham
- No Manual Annotations of this start.
- Called 2.6% of time when present
- Phage (with cluster) where this start called: Wilkos_18 (BN),

Summary by clusters:

There are 17 clusters represented in this pham: singleton, EA11, EA10, CW1, BN, CW2, EA, BJ, EA9, EA8, EA1, EA3, EA2, EA5, EA4, EA7, EA6,

Info for manual annotations of cluster BJ:

- Start number 14 was manually annotated 1 time for cluster BJ.

Info for manual annotations of cluster BN:

- Start number 13 was manually annotated 9 times for cluster BN.

Info for manual annotations of cluster CW1:

- Start number 12 was manually annotated 2 times for cluster CW1.

Info for manual annotations of cluster CW2:

- Start number 13 was manually annotated 2 times for cluster CW2.

Info for manual annotations of cluster EA:

- Start number 15 was manually annotated 1 time for cluster EA.

Info for manual annotations of cluster EA1:

- Start number 15 was manually annotated 131 times for cluster EA1.

Info for manual annotations of cluster EA10:

- Start number 15 was manually annotated 7 times for cluster EA10.

Info for manual annotations of cluster EA11:

- Start number 15 was manually annotated 5 times for cluster EA11.

Info for manual annotations of cluster EA2:

- Start number 15 was manually annotated 13 times for cluster EA2.

Info for manual annotations of cluster EA3:

- Start number 15 was manually annotated 3 times for cluster EA3.

Info for manual annotations of cluster EA4:

- Start number 15 was manually annotated 12 times for cluster EA4.

Info for manual annotations of cluster EA5:

- Start number 15 was manually annotated 16 times for cluster EA5.

Info for manual annotations of cluster EA6:

- Start number 15 was manually annotated 5 times for cluster EA6.
- Start number 16 was manually annotated 2 times for cluster EA6.

Info for manual annotations of cluster EA7:

- Start number 15 was manually annotated 1 time for cluster EA7.

Info for manual annotations of cluster EA8:

- Start number 15 was manually annotated 1 time for cluster EA8.

Info for manual annotations of cluster EA9:

- Start number 15 was manually annotated 3 times for cluster EA9.

Gene Information:

Gene: Acosta_12 Start: 7176, Stop: 7517, Start Num: 15

Candidate Starts for Acosta_12:

(Start: 15 @7176 has 198 MA's), (20, 7188), (37, 7311), (38, 7326), (47, 7386), (48, 7398), (49, 7404), (52, 7425), (59, 7485),

Gene: Agente005_12 Start: 7463, Stop: 7804, Start Num: 15

Candidate Starts for Agente005_12:

(Start: 15 @7463 has 198 MA's), (20, 7475), (38, 7613), (49, 7691), (50, 7697), (52, 7712), (58, 7763), (59, 7772),

Gene: Alakazam_13 Start: 8135, Stop: 8482, Start Num: 15

Candidate Starts for Alakazam_13:

(Start: 15 @8135 has 198 MA's), (32, 8246), (35, 8267), (37, 8276), (38, 8291), (49, 8369), (50, 8375), (52, 8390),

Gene: AlexAdler_11 Start: 6894, Stop: 7235, Start Num: 15

Candidate Starts for AlexAdler_11:

(Start: 15 @6894 has 198 MA's), (20, 6906), (32, 6999), (37, 7029), (38, 7044), (48, 7116), (49, 7122), (52, 7143), (59, 7203),

Gene: Alyxandracam_11 Start: 6903, Stop: 7244, Start Num: 15

Candidate Starts for Alyxandracam_11:

(Start: 15 @6903 has 198 MA's), (20, 6915), (32, 7008), (37, 7038), (38, 7053), (48, 7125), (49, 7131), (52, 7152), (59, 7212),

Gene: Andromedas_10 Start: 6933, Stop: 7280, Start Num: 15

Candidate Starts for Andromedas_10:

(5, 6795), (Start: 15 @6933 has 198 MA's), (20, 6945), (26, 6987), (30, 7029), (35, 7065), (38, 7089), (47, 7149), (49, 7167), (52, 7188), (54, 7209), (58, 7239),

Gene: Anilorac_11 Start: 7306, Stop: 7647, Start Num: 15

Candidate Starts for Anilorac_11:

(Start: 15 @7306 has 198 MA's), (20, 7318), (38, 7456), (49, 7534), (52, 7555), (56, 7591), (59, 7615),

Gene: Antoinette_11 Start: 6894, Stop: 7235, Start Num: 15

Candidate Starts for Antoinette_11:

(Start: 15 @6894 has 198 MA's), (20, 6906), (32, 6999), (37, 7029), (38, 7044), (48, 7116), (49, 7122), (52, 7143), (59, 7203),

Gene: AranulaLuti_11 Start: 7196, Stop: 7537, Start Num: 15

Candidate Starts for AranulaLuti_11:

(Start: 15 @7196 has 198 MA's), (20, 7208), (32, 7301), (37, 7331), (38, 7346), (48, 7418), (49, 7424), (52, 7445), (56, 7481), (59, 7505),

Gene: Asta_11 Start: 7209, Stop: 7550, Start Num: 15

Candidate Starts for Asta_11:

(Start: 15 @7209 has 198 MA's), (20, 7221), (32, 7314), (37, 7344), (38, 7359), (48, 7431), (49, 7437), (52, 7458), (56, 7494), (59, 7518),

Gene: Aubergine_11 Start: 7209, Stop: 7550, Start Num: 15

Candidate Starts for Aubergine_11:

(Start: 15 @7209 has 198 MA's), (20, 7221), (32, 7314), (37, 7344), (38, 7359), (48, 7431), (49, 7437), (52, 7458), (56, 7494), (59, 7518),

Gene: AxiPup_11 Start: 6903, Stop: 7244, Start Num: 15

Candidate Starts for AxiPup_11:

(Start: 15 @6903 has 198 MA's), (20, 6915), (32, 7008), (37, 7038), (38, 7053), (48, 7125), (49, 7131), (52, 7152), (59, 7212),

Gene: Baines_11 Start: 7193, Stop: 7534, Start Num: 15

Candidate Starts for Baines_11:

(Start: 15 @7193 has 198 MA's), (20, 7205), (32, 7298), (37, 7328), (38, 7343), (48, 7415), (49, 7421), (52, 7442), (59, 7502),

Gene: Balsa_11 Start: 7311, Stop: 7652, Start Num: 15

Candidate Starts for Balsa_11:

(Start: 15 @7311 has 198 MA's), (20, 7323), (38, 7461), (49, 7539), (52, 7560), (59, 7620),

Gene: Bandik_11 Start: 6900, Stop: 7241, Start Num: 15

Candidate Starts for Bandik_11:

(Start: 15 @6900 has 198 MA's), (20, 6912), (32, 7005), (37, 7035), (38, 7050), (48, 7122), (49, 7128), (52, 7149), (56, 7185), (59, 7209),

Gene: BaronJohn_12 Start: 7341, Stop: 7685, Start Num: 15

Candidate Starts for BaronJohn_12:

(Start: 15 @7341 has 198 MA's), (26, 7395), (28, 7419), (30, 7437), (32, 7452), (38, 7497), (49, 7575), (50, 7581), (52, 7596),

Gene: BeautPeep30_11 Start: 6906, Stop: 7247, Start Num: 15

Candidate Starts for BeautPeep30_11:

(Start: 15 @6906 has 198 MA's), (20, 6918), (32, 7011), (37, 7041), (38, 7056), (48, 7128), (49, 7134), (52, 7155), (56, 7191), (59, 7215),

Gene: BeeBee8_12 Start: 7474, Stop: 7815, Start Num: 15

Candidate Starts for BeeBee8_12:

(Start: 15 @7474 has 198 MA's), (20, 7486), (38, 7624), (49, 7702), (52, 7723), (59, 7783),

Gene: Benjalauren_11 Start: 7196, Stop: 7537, Start Num: 15

Candidate Starts for Benjalauren_11:

(Start: 15 @7196 has 198 MA's), (20, 7208), (32, 7301), (37, 7331), (38, 7346), (48, 7418), (49, 7424), (52, 7445), (56, 7481), (59, 7505),

Gene: BigRedClifford_11 Start: 6903, Stop: 7244, Start Num: 15

Candidate Starts for BigRedClifford_11:

(Start: 15 @6903 has 198 MA's), (20, 6915), (32, 7008), (37, 7038), (38, 7053), (48, 7125), (49, 7131), (52, 7152), (59, 7212),

Gene: Blage_11 Start: 6903, Stop: 7244, Start Num: 15

Candidate Starts for Blage_11:

(Start: 15 @6903 has 198 MA's), (20, 6915), (32, 7008), (37, 7038), (38, 7053), (48, 7125), (49, 7131), (52, 7152), (59, 7212),

Gene: BonesMcCoy_11 Start: 6903, Stop: 7244, Start Num: 15

Candidate Starts for BonesMcCoy_11:

(Start: 15 @6903 has 198 MA's), (20, 6915), (32, 7008), (37, 7038), (38, 7053), (48, 7125), (49, 7131), (52, 7152), (59, 7212),

Gene: Bonino_11 Start: 7186, Stop: 7527, Start Num: 15

Candidate Starts for Bonino_11:

(Start: 15 @7186 has 198 MA's), (20, 7198), (32, 7291), (37, 7321), (38, 7336), (48, 7408), (49, 7414), (52, 7435), (56, 7471), (59, 7495),

Gene: BouleyBill_11 Start: 7168, Stop: 7509, Start Num: 15

Candidate Starts for BouleyBill_11:

(Start: 15 @7168 has 198 MA's), (20, 7180), (35, 7294), (37, 7303), (38, 7318), (47, 7378), (49, 7396), (52, 7417),

Gene: Bustleton_11 Start: 7156, Stop: 7497, Start Num: 15

Candidate Starts for Bustleton_11:

(Start: 15 @7156 has 198 MA's), (20, 7168), (35, 7282), (37, 7291), (38, 7306), (47, 7366), (49, 7384), (52, 7405),

Gene: Byron23_11 Start: 6909, Stop: 7250, Start Num: 15

Candidate Starts for Byron23_11:

(Start: 15 @6909 has 198 MA's), (20, 6921), (32, 7014), (37, 7044), (38, 7059), (48, 7131), (49, 7137), (52, 7158), (56, 7194), (59, 7218),

Gene: Calix_11 Start: 7186, Stop: 7527, Start Num: 15

Candidate Starts for Calix_11:

(Start: 15 @7186 has 198 MA's), (20, 7198), (32, 7291), (37, 7321), (38, 7336), (48, 7408), (49, 7414), (52, 7435), (59, 7495),

Gene: CaptainRex_12 Start: 7344, Stop: 7688, Start Num: 15

Candidate Starts for CaptainRex_12:

(Start: 15 @7344 has 198 MA's), (26, 7398), (28, 7422), (30, 7440), (32, 7455), (38, 7500), (49, 7578), (50, 7584), (52, 7599),

Gene: CarisSwetlik_13 Start: 7667, Stop: 8008, Start Num: 15

Candidate Starts for CarisSwetlik_13:

(Start: 15 @7667 has 198 MA's), (20, 7679), (38, 7817), (47, 7877), (48, 7889), (49, 7895), (52, 7916), (59, 7976),

Gene: Carostasia_10 Start: 7109, Stop: 7456, Start Num: 15

Candidate Starts for Carostasia_10:

(5, 6974), (Start: 15 @7109 has 198 MA's), (20, 7121), (35, 7241), (37, 7250), (38, 7265), (47, 7325), (49, 7343), (52, 7364), (59, 7424),

Gene: Casey_10 Start: 7200, Stop: 7547, Start Num: 15

Candidate Starts for Casey_10:

(5, 7065), (Start: 15 @7200 has 198 MA's), (20, 7212), (30, 7296), (35, 7332), (38, 7356), (52, 7455), (64, 7536),

Gene: Chako_11 Start: 7196, Stop: 7537, Start Num: 15

Candidate Starts for Chako_11:

(Start: 15 @7196 has 198 MA's), (20, 7208), (32, 7301), (37, 7331), (38, 7346), (48, 7418), (49, 7424), (52, 7445), (56, 7481), (59, 7505),

Gene: Chamuel_11 Start: 7188, Stop: 7529, Start Num: 15

Candidate Starts for Chamuel_11:

(Start: 15 @7188 has 198 MA's), (20, 7200), (32, 7293), (37, 7323), (38, 7338), (48, 7410), (49, 7416), (52, 7437), (59, 7497),

Gene: Cheeto1_12 Start: 7074, Stop: 7415, Start Num: 15

Candidate Starts for Cheeto1_12:

(Start: 15 @7074 has 198 MA's), (20, 7086), (38, 7224), (43, 7251), (47, 7284), (52, 7323), (58, 7374), (59, 7383),

Gene: Chepli_12 Start: 7337, Stop: 7681, Start Num: 15

Candidate Starts for Chepli_12:

(Start: 15 @7337 has 198 MA's), (18, 7346), (20, 7352), (35, 7472), (37, 7481), (38, 7496), (49, 7571), (52, 7592), (57, 7631),

Gene: ChickenKing_11 Start: 6894, Stop: 7235, Start Num: 15

Candidate Starts for ChickenKing_11:

(Start: 15 @6894 has 198 MA's), (20, 6906), (35, 7020), (38, 7044), (47, 7104), (52, 7143), (58, 7194), (59, 7203),

Gene: ChikPic_10 Start: 6949, Stop: 7296, Start Num: 15

Candidate Starts for ChikPic_10:

(5, 6811), (Start: 15 @6949 has 198 MA's), (20, 6961), (26, 7003), (30, 7045), (35, 7081), (38, 7105), (49, 7183), (52, 7204), (54, 7225), (58, 7255),

Gene: Christoph_11 Start: 7207, Stop: 7548, Start Num: 15

Candidate Starts for Christoph_11:

(Start: 15 @7207 has 198 MA's), (20, 7219), (32, 7312), (37, 7342), (38, 7357), (48, 7429), (49, 7435), (52, 7456), (56, 7492), (59, 7516),

Gene: Chymera_11 Start: 8567, Stop: 8941, Start Num: 10

Candidate Starts for Chymera_11:

(Start: 10 @8567 has 1 MA's), (Start: 13 @8582 has 11 MA's), (Start: 15 @8588 has 198 MA's), (21, 8603), (29, 8669), (63, 8921),

Gene: Clancy_11 Start: 7196, Stop: 7537, Start Num: 15

Candidate Starts for Clancy_11:

(Start: 15 @7196 has 198 MA's), (20, 7208), (32, 7301), (37, 7331), (38, 7346), (48, 7418), (49, 7424), (52, 7445), (56, 7481), (59, 7505),

Gene: Clock_12 Start: 8068, Stop: 8412, Start Num: 15

Candidate Starts for Clock_12:

(Start: 15 @8068 has 198 MA's), (32, 8179), (35, 8200), (37, 8209), (38, 8224), (41, 8242), (47, 8281), (49, 8299), (52, 8320),

Gene: Coeur_11 Start: 7354, Stop: 7704, Start Num: 13

Candidate Starts for Coeur_11:

(Start: 13 @7354 has 11 MA's), (19, 7375), (42, 7537), (52, 7609), (53, 7627), (62, 7678),

Gene: ColaCorta_10 Start: 6933, Stop: 7280, Start Num: 15

Candidate Starts for ColaCorta_10:

(5, 6795), (Start: 15 @6933 has 198 MA's), (20, 6945), (26, 6987), (30, 7029), (35, 7065), (38, 7089), (47, 7149), (49, 7167), (52, 7188), (54, 7209), (58, 7239),

Gene: Convict_11 Start: 6903, Stop: 7244, Start Num: 15

Candidate Starts for Convict_11:

(Start: 15 @6903 has 198 MA's), (20, 6915), (32, 7008), (37, 7038), (38, 7053), (48, 7125), (49, 7131), (52, 7152), (59, 7212),

Gene: CoraRita_11 Start: 7196, Stop: 7537, Start Num: 15

Candidate Starts for CoraRita_11:

(Start: 15 @7196 has 198 MA's), (20, 7208), (32, 7301), (37, 7331), (38, 7346), (48, 7418), (49, 7424), (52, 7445), (56, 7481), (59, 7505),

Gene: Dave_11 Start: 6894, Stop: 7235, Start Num: 15

Candidate Starts for Dave_11:

(Start: 15 @6894 has 198 MA's), (20, 6906), (32, 6999), (37, 7029), (38, 7044), (48, 7116), (49, 7122), (52, 7143), (59, 7203),

Gene: Delphidian_11 Start: 6903, Stop: 7244, Start Num: 15

Candidate Starts for Delphidian_11:

(Start: 15 @6903 has 198 MA's), (20, 6915), (32, 7008), (37, 7038), (38, 7053), (48, 7125), (49, 7131), (52, 7152), (56, 7188), (59, 7212),

Gene: Den3_11 Start: 6907, Stop: 7248, Start Num: 15

Candidate Starts for Den3_11:

(Start: 15 @6907 has 198 MA's), (20, 6919), (32, 7012), (37, 7042), (38, 7057), (48, 7129), (49, 7135), (52, 7156), (59, 7216),

Gene: Dothraki_11 Start: 6906, Stop: 7247, Start Num: 15

Candidate Starts for Dothraki_11:

(Start: 15 @6906 has 198 MA's), (20, 6918), (32, 7011), (37, 7041), (38, 7056), (48, 7128), (49, 7134), (52, 7155), (56, 7191), (59, 7215),

Gene: Dryad_20 Start: 11479, Stop: 11826, Start Num: 13

Candidate Starts for Dryad_20:

(6, 11368), (8, 11392), (11, 11470), (Start: 13 @11479 has 11 MA's), (29, 11566), (34, 11599), (46, 11692),

Gene: Dubu_10 Start: 7230, Stop: 7601, Start Num: 14

Candidate Starts for Dubu_10:

(Start: 14 @7230 has 1 MA's), (25, 7293), (37, 7368), (42, 7407), (49, 7476), (52, 7497), (53, 7515), (60, 7560),

Gene: Duocatuli_11 Start: 7196, Stop: 7537, Start Num: 15

Candidate Starts for Duocatuli_11:

(Start: 15 @7196 has 198 MA's), (20, 7208), (32, 7301), (37, 7331), (38, 7346), (48, 7418), (49, 7424), (52, 7445), (56, 7481), (59, 7505),

Gene: Eleri_10 Start: 6946, Stop: 7293, Start Num: 15

Candidate Starts for Eleri_10:

(5, 6808), (Start: 15 @6946 has 198 MA's), (20, 6958), (26, 7000), (30, 7042), (35, 7078), (38, 7102), (49, 7180), (52, 7201), (54, 7222), (58, 7252),

Gene: Endor_12 Start: 7472, Stop: 7813, Start Num: 15

Candidate Starts for Endor_12:

(Start: 15 @7472 has 198 MA's), (20, 7484), (38, 7622), (47, 7682), (49, 7700), (52, 7721), (59, 7781),

Gene: Erla_11 Start: 7186, Stop: 7527, Start Num: 15

Candidate Starts for Erla_11:

(Start: 15 @7186 has 198 MA's), (20, 7198), (32, 7291), (37, 7321), (38, 7336), (48, 7408), (49, 7414), (52, 7435), (59, 7495),

Gene: Espinosa_11 Start: 7207, Stop: 7548, Start Num: 15

Candidate Starts for Espinosa_11:

(Start: 15 @7207 has 198 MA's), (20, 7219), (32, 7312), (37, 7342), (38, 7357), (48, 7429), (49, 7435), (52, 7456), (56, 7492), (59, 7516),

Gene: Etna_11 Start: 7302, Stop: 7643, Start Num: 15

Candidate Starts for Etna_11:

(Start: 15 @7302 has 198 MA's), (20, 7314), (38, 7452), (49, 7530), (52, 7551), (59, 7611),

Gene: Etta_11 Start: 7190, Stop: 7531, Start Num: 15

Candidate Starts for Etta_11:

(Start: 15 @7190 has 198 MA's), (20, 7202), (32, 7295), (37, 7325), (38, 7340), (48, 7412), (49, 7418), (52, 7439), (59, 7499),

Gene: Exploradora_11 Start: 7196, Stop: 7537, Start Num: 15

Candidate Starts for Exploradora_11:

(Start: 15 @7196 has 198 MA's), (20, 7208), (32, 7301), (37, 7331), (38, 7346), (48, 7418), (49, 7424), (52, 7445), (56, 7481), (59, 7505),

Gene: FarmerDoug_11 Start: 7031, Stop: 7372, Start Num: 15

Candidate Starts for FarmerDoug_11:

(Start: 15 @7031 has 198 MA's), (20, 7043), (37, 7166), (38, 7181), (49, 7259), (52, 7280), (59, 7340),

Gene: Figueroism_11 Start: 6894, Stop: 7235, Start Num: 15

Candidate Starts for Figueroism_11:

(Start: 15 @6894 has 198 MA's), (20, 6906), (32, 6999), (37, 7029), (38, 7044), (39, 7047), (48, 7116), (49, 7122), (52, 7143), (59, 7203),

Gene: Finny_10 Start: 6933, Stop: 7280, Start Num: 15

Candidate Starts for Finny_10:

(5, 6795), (Start: 15 @6933 has 198 MA's), (20, 6945), (26, 6987), (30, 7029), (35, 7065), (38, 7089), (49, 7167), (52, 7188), (54, 7209), (58, 7239),

Gene: Fulton_12 Start: 7326, Stop: 7670, Start Num: 15

Candidate Starts for Fulton_12:

(Start: 15 @7326 has 198 MA's), (26, 7380), (28, 7404), (30, 7422), (32, 7437), (38, 7482), (49, 7560), (50, 7566), (52, 7581),

Gene: GMA5_10 Start: 7204, Stop: 7551, Start Num: 12

Candidate Starts for GMA5_10:

(1, 6892), (7, 7126), (Start: 12 @7204 has 2 MA's), (19, 7219), (30, 7300), (52, 7453), (53, 7471),

Gene: GRU3_10 Start: 7270, Stop: 7608, Start Num: 17

Candidate Starts for GRU3_10:

(Start: 12 @7258 has 2 MA's), (17, 7270), (19, 7276), (42, 7438), (52, 7510), (53, 7528),

Gene: GaeCeo_12 Start: 7064, Stop: 7405, Start Num: 15

Candidate Starts for GaeCeo_12:

(Start: 15 @7064 has 198 MA's), (20, 7076), (38, 7214), (47, 7274), (52, 7313), (58, 7364), (59, 7373),

Gene: GardenB_11 Start: 7305, Stop: 7646, Start Num: 15

Candidate Starts for GardenB_11:

(Start: 15 @7305 has 198 MA's), (20, 7317), (38, 7455), (49, 7533), (52, 7554), (59, 7614),

Gene: Garey24_11 Start: 7192, Stop: 7533, Start Num: 15

Candidate Starts for Garey24_11:

(Start: 15 @7192 has 198 MA's), (20, 7204), (32, 7297), (37, 7327), (38, 7342), (48, 7414), (49, 7420), (52, 7441), (56, 7477), (58, 7492), (59, 7501),

Gene: Gargoyle_11 Start: 6906, Stop: 7247, Start Num: 15

Candidate Starts for Gargoyle_11:

(Start: 15 @6906 has 198 MA's), (20, 6918), (32, 7011), (37, 7041), (38, 7056), (48, 7128), (49, 7134), (52, 7155), (56, 7191), (59, 7215),

Gene: Gelo_11 Start: 7190, Stop: 7531, Start Num: 15

Candidate Starts for Gelo_11:

(Start: 15 @7190 has 198 MA's), (20, 7202), (32, 7295), (37, 7325), (38, 7340), (48, 7412), (49, 7418), (52, 7439), (59, 7499),

Gene: Gershwin_11 Start: 7209, Stop: 7550, Start Num: 15

Candidate Starts for Gershwin_11:

(Start: 15 @7209 has 198 MA's), (20, 7221), (32, 7314), (37, 7344), (38, 7359), (48, 7431), (49, 7437), (52, 7458), (56, 7494), (59, 7518),

Gene: Gibson_18 Start: 11037, Stop: 11384, Start Num: 13

Candidate Starts for Gibson_18:

(4, 10878), (8, 10953), (Start: 13 @11037 has 11 MA's), (27, 11109), (34, 11157), (36, 11169), (37, 11175), (46, 11250),

Gene: Glamour_9 Start: 6934, Stop: 7281, Start Num: 15

Candidate Starts for Glamour_9:

(5, 6796), (Start: 15 @6934 has 198 MA's), (20, 6946), (26, 6988), (30, 7030), (35, 7066), (38, 7090), (49, 7168), (52, 7189), (54, 7210), (58, 7240),

Gene: GoingMerry_11 Start: 6916, Stop: 7257, Start Num: 15

Candidate Starts for GoingMerry_11:

(Start: 15 @6916 has 198 MA's), (20, 6928), (32, 7021), (37, 7051), (38, 7066), (48, 7138), (49, 7144), (52, 7165), (59, 7225),

Gene: Golden_11 Start: 7248, Stop: 7589, Start Num: 15

Candidate Starts for Golden_11:

(Start: 15 @7248 has 198 MA's), (20, 7260), (32, 7353), (35, 7374), (37, 7383), (38, 7398), (49, 7476), (52, 7497),

Gene: GoneGirl_12 Start: 7411, Stop: 7752, Start Num: 15

Candidate Starts for GoneGirl_12:

(Start: 15 @7411 has 198 MA's), (20, 7423), (38, 7561), (49, 7639), (52, 7660), (59, 7720),

Gene: Greenlvy_12 Start: 7343, Stop: 7687, Start Num: 15

Candidate Starts for Greenlvy_12:

(Start: 15 @7343 has 198 MA's), (26, 7397), (28, 7421), (30, 7439), (32, 7454), (38, 7499), (49, 7577), (50, 7583), (52, 7598),

Gene: Greenbelt_18 Start: 10906, Stop: 11253, Start Num: 13

Candidate Starts for Greenbelt_18:

(2, 10594), (Start: 13 @10906 has 11 MA's), (33, 11017), (34, 11026), (36, 11038), (37, 11044), (46, 11119), (49, 11137), (65, 11242),

Gene: Greys_11 Start: 6903, Stop: 7244, Start Num: 15

Candidate Starts for Greys_11:

(Start: 15 @6903 has 198 MA's), (20, 6915), (32, 7008), (37, 7038), (38, 7053), (48, 7125), (49, 7131), (52, 7152), (59, 7212),

Gene: Gubbabump_11 Start: 7198, Stop: 7539, Start Num: 15

Candidate Starts for Gubbabump_11:

(Start: 15 @7198 has 198 MA's), (20, 7210), (32, 7303), (37, 7333), (38, 7348), (48, 7420), (49, 7426), (52, 7447), (56, 7483), (59, 7507),

Gene: Guetzie_11 Start: 7242, Stop: 7583, Start Num: 15

Candidate Starts for Guetzie_11:

(Start: 15 @7242 has 198 MA's), (20, 7254), (32, 7347), (35, 7368), (37, 7377), (38, 7392), (49, 7470), (52, 7491),

Gene: HairyMan_9 Start: 6690, Stop: 7037, Start Num: 15

Candidate Starts for HairyMan_9:

(Start: 15 @6690 has 198 MA's), (20, 6702), (22, 6711), (26, 6744), (31, 6792), (32, 6801), (37, 6831), (38, 6846), (47, 6906), (48, 6918), (49, 6924), (64, 7026),

Gene: Hamlet_11 Start: 7311, Stop: 7652, Start Num: 15

Candidate Starts for Hamlet_11:

(Start: 15 @7311 has 198 MA's), (20, 7323), (38, 7461), (49, 7539), (52, 7560), (59, 7620),

Gene: HanSolo_11 Start: 7196, Stop: 7537, Start Num: 15

Candidate Starts for HanSolo_11:

(Start: 15 @7196 has 198 MA's), (20, 7208), (32, 7301), (37, 7331), (38, 7346), (48, 7418), (49, 7424), (52, 7445), (56, 7481), (59, 7505),

Gene: HankSprout_12 Start: 7076, Stop: 7417, Start Num: 15

Candidate Starts for HankSprout_12:

(Start: 15 @7076 has 198 MA's), (20, 7088), (32, 7181), (37, 7211), (38, 7226), (48, 7298), (49, 7304), (52, 7325), (56, 7361), (59, 7385),

Gene: Hasitha_12 Start: 7344, Stop: 7688, Start Num: 15

Candidate Starts for Hasitha_12:

(Start: 15 @7344 has 198 MA's), (26, 7398), (28, 7422), (30, 7440), (32, 7455), (38, 7500), (49, 7578), (50, 7584), (52, 7599),

Gene: HavenFinLeoSun_12 Start: 7153, Stop: 7494, Start Num: 15

Candidate Starts for HavenFinLeoSun_12:

(Start: 15 @7153 has 198 MA's), (20, 7165), (38, 7303), (47, 7363), (48, 7375), (49, 7381), (52, 7402), (59, 7462),

Gene: HerculesXL_12 Start: 7445, Stop: 7789, Start Num: 15

Candidate Starts for HerculesXL_12:

(Start: 15 @7445 has 198 MA's), (26, 7499), (35, 7577), (38, 7601), (49, 7679), (52, 7700),

Gene: HungryHenry_11 Start: 7197, Stop: 7538, Start Num: 15

Candidate Starts for HungryHenry_11:

(Start: 15 @7197 has 198 MA's), (20, 7209), (32, 7302), (37, 7332), (38, 7347), (48, 7419), (49, 7425), (52, 7446), (56, 7482), (59, 7506),

Gene: Ilzat_11 Start: 7196, Stop: 7537, Start Num: 15

Candidate Starts for Ilzat_11:

(Start: 15 @7196 has 198 MA's), (20, 7208), (32, 7301), (37, 7331), (38, 7346), (48, 7418), (49, 7424), (52, 7445), (56, 7481), (59, 7505),

Gene: Inventa_11 Start: 6906, Stop: 7247, Start Num: 15

Candidate Starts for Inventa_11:

(Start: 15 @6906 has 198 MA's), (20, 6918), (32, 7011), (37, 7041), (38, 7056), (48, 7128), (49, 7134), (52, 7155), (56, 7191), (59, 7215),

Gene: loannes_11 Start: 6903, Stop: 7244, Start Num: 15

Candidate Starts for loannes_11:

(Start: 15 @6903 has 198 MA's), (20, 6915), (32, 7008), (37, 7038), (38, 7053), (48, 7125), (49, 7131), (52, 7152), (59, 7212),

Gene: Ixel_11 Start: 6998, Stop: 7345, Start Num: 15

Candidate Starts for Ixel_11:

(Start: 15 @6998 has 198 MA's), (23, 7034), (35, 7130), (38, 7154), (44, 7196), (49, 7232), (51, 7250), (52, 7253),

Gene: Janus167_11 Start: 7196, Stop: 7537, Start Num: 15

Candidate Starts for Janus167_11:

(Start: 15 @7196 has 198 MA's), (20, 7208), (32, 7301), (37, 7331), (38, 7346), (48, 7418), (49, 7424), (52, 7445), (56, 7481), (59, 7505),

Gene: JasonD_13 Start: 7337, Stop: 7678, Start Num: 15

Candidate Starts for JasonD_13:

(Start: 15 @7337 has 198 MA's), (20, 7349), (31, 7433), (38, 7487), (47, 7547), (48, 7559), (49, 7565), (52, 7586), (59, 7646),

Gene: JasperRussell_11 Start: 7196, Stop: 7537, Start Num: 15

Candidate Starts for JasperRussell_11:

(Start: 15 @7196 has 198 MA's), (20, 7208), (32, 7301), (37, 7331), (38, 7346), (48, 7418), (49, 7424), (52, 7445), (56, 7481), (59, 7505),

Gene: Jeanie_11 Start: 7163, Stop: 7513, Start Num: 12

Candidate Starts for Jeanie_11:

(3, 6938), (Start: 12 @7163 has 2 MA's), (19, 7184), (45, 7367), (52, 7418), (64, 7496),

Gene: Jemerald_12 Start: 8307, Stop: 8651, Start Num: 16

Candidate Starts for Jemerald_12:

(Start: 16 @8307 has 2 MA's), (18, 8316), (20, 8322), (29, 8397), (31, 8412), (35, 8442), (38, 8466), (49, 8541), (50, 8547), (52, 8562), (61, 8625),

Gene: Jenos_13 Start: 7658, Stop: 7999, Start Num: 15

Candidate Starts for Jenos_13:

(Start: 15 @7658 has 198 MA's), (20, 7670), (38, 7808), (47, 7868), (48, 7880), (49, 7886), (52, 7907), (59, 7967),

Gene: Jerbirus_11 Start: 7196, Stop: 7537, Start Num: 15

Candidate Starts for Jerbirus_11:

(Start: 15 @7196 has 198 MA's), (20, 7208), (32, 7301), (37, 7331), (38, 7346), (48, 7418), (49, 7424), (52, 7445), (56, 7481), (59, 7505),

Gene: JeriBeth_11 Start: 7043, Stop: 7384, Start Num: 15

Candidate Starts for JeriBeth_11:

(Start: 15 @7043 has 198 MA's), (20, 7055), (32, 7148), (37, 7178), (38, 7193), (48, 7265), (49, 7271), (52, 7292), (56, 7328), (59, 7352),

Gene: Jingles_11 Start: 7170, Stop: 7511, Start Num: 15

Candidate Starts for Jingles_11:

(Start: 15 @7170 has 198 MA's), (20, 7182), (35, 7296), (37, 7305), (38, 7320), (47, 7380), (49, 7398), (52, 7419),

Gene: Juanyo_10 Start: 7071, Stop: 7418, Start Num: 15

Candidate Starts for Juanyo_10:

(Start: 15 @7071 has 198 MA's), (20, 7083), (32, 7182), (35, 7203), (37, 7212), (38, 7227), (47, 7287), (49, 7305), (50, 7311), (52, 7326), (59, 7386),

Gene: Juicer_12 Start: 8307, Stop: 8651, Start Num: 16

Candidate Starts for Juicer_12:

(Start: 16 @8307 has 2 MA's), (18, 8316), (20, 8322), (29, 8397), (31, 8412), (35, 8442), (38, 8466), (49, 8541), (50, 8547), (52, 8562), (61, 8625),

Gene: Kale_11 Start: 7211, Stop: 7552, Start Num: 15

Candidate Starts for Kale_11:

(Start: 15 @7211 has 198 MA's), (20, 7223), (32, 7316), (37, 7346), (38, 7361), (48, 7433), (49, 7439), (52, 7460), (56, 7496), (59, 7520),

Gene: KannH_11 Start: 7196, Stop: 7537, Start Num: 15

Candidate Starts for KannH_11:

(Start: 15 @7196 has 198 MA's), (20, 7208), (32, 7301), (37, 7331), (38, 7346), (48, 7418), (49, 7424), (52, 7445), (56, 7481), (59, 7505),

Gene: KatChan_12 Start: 7343, Stop: 7687, Start Num: 15

Candidate Starts for KatChan_12:

(Start: 15 @7343 has 198 MA's), (18, 7352), (20, 7358), (35, 7478), (37, 7487), (38, 7502), (49, 7577), (52, 7598), (57, 7637),

Gene: Kauala_11 Start: 7164, Stop: 7505, Start Num: 15

Candidate Starts for Kauala_11:

(Start: 15 @7164 has 198 MA's), (20, 7176), (29, 7245), (32, 7269), (35, 7290), (37, 7299), (38, 7314), (47, 7374), (49, 7392), (52, 7413), (54, 7434),

Gene: Kavo_11 Start: 7277, Stop: 7621, Start Num: 15

Candidate Starts for Kavo_11:

(Start: 15 @7277 has 198 MA's), (26, 7331), (35, 7409), (38, 7433), (49, 7511), (52, 7532),

Gene: KellyGreen_11 Start: 7196, Stop: 7537, Start Num: 15

Candidate Starts for KellyGreen_11:

(Start: 15 @7196 has 198 MA's), (20, 7208), (32, 7301), (37, 7331), (38, 7346), (48, 7418), (49, 7424), (52, 7445), (56, 7481), (59, 7505),

Gene: KingJulien_11 Start: 7302, Stop: 7643, Start Num: 15

Candidate Starts for KingJulien_11:

(Start: 15 @7302 has 198 MA's), (20, 7314), (38, 7452), (49, 7530), (52, 7551), (59, 7611),

Gene: Klimt_11 Start: 7188, Stop: 7529, Start Num: 15

Candidate Starts for Klimt_11:

(Start: 15 @7188 has 198 MA's), (20, 7200), (32, 7293), (37, 7323), (38, 7338), (48, 7410), (49, 7416), (52, 7437), (59, 7497),

Gene: Knox_11 Start: 6903, Stop: 7244, Start Num: 15

Candidate Starts for Knox_11:

(Start: 15 @6903 has 198 MA's), (20, 6915), (32, 7008), (37, 7038), (38, 7053), (48, 7125), (49, 7131), (52, 7152), (59, 7212),

Gene: Koji_11 Start: 7289, Stop: 7630, Start Num: 15

Candidate Starts for Koji_11:

(Start: 15 @7289 has 198 MA's), (20, 7301), (35, 7415), (37, 7424), (38, 7439), (47, 7499), (49, 7517), (52, 7538),

Gene: Kouch_11 Start: 7196, Stop: 7537, Start Num: 15

Candidate Starts for Kouch_11:

(Start: 15 @7196 has 198 MA's), (20, 7208), (32, 7301), (37, 7331), (38, 7346), (48, 7418), (49, 7424), (52, 7445), (56, 7481), (59, 7505),

Gene: Kurt1_11 Start: 6906, Stop: 7247, Start Num: 15

Candidate Starts for Kurt1_11:

(Start: 15 @6906 has 198 MA's), (20, 6918), (32, 7011), (37, 7041), (38, 7056), (48, 7128), (49, 7134), (52, 7155), (56, 7191), (59, 7215),

Gene: Leafus_11 Start: 7449, Stop: 7790, Start Num: 15

Candidate Starts for Leafus_11:

(Start: 15 @7449 has 198 MA's), (20, 7461), (38, 7599), (49, 7677), (52, 7698), (59, 7758),

Gene: Librie_12 Start: 7344, Stop: 7688, Start Num: 15

Candidate Starts for Librie_12:

(Start: 15 @7344 has 198 MA's), (26, 7398), (28, 7422), (30, 7440), (32, 7455), (38, 7500), (49, 7578), (50, 7584), (52, 7599),

Gene: LilTerminator_12 Start: 7350, Stop: 7694, Start Num: 15

Candidate Starts for LilTerminator_12:

(Start: 15 @7350 has 198 MA's), (26, 7404), (28, 7428), (30, 7446), (32, 7461), (38, 7506), (49, 7584), (50, 7590), (52, 7605),

Gene: Lizz_18 Start: 10953, Stop: 11300, Start Num: 13

Candidate Starts for Lizz_18:

(4, 10794), (8, 10869), (Start: 13 @10953 has 11 MA's), (27, 11025), (34, 11073), (36, 11085), (37, 11091), (46, 11166),

Gene: Lovelyunicorn_11 Start: 6903, Stop: 7244, Start Num: 15

Candidate Starts for Lovelyunicorn_11:

(Start: 15 @6903 has 198 MA's), (20, 6915), (32, 7008), (37, 7038), (38, 7053), (48, 7125), (49, 7131), (52, 7152), (59, 7212),

Gene: Lucky3_11 Start: 7248, Stop: 7589, Start Num: 15

Candidate Starts for Lucky3_11:

(Start: 15 @7248 has 198 MA's), (20, 7260), (32, 7353), (35, 7374), (37, 7383), (38, 7398), (49, 7476), (52, 7497),

Gene: Ludgate_11 Start: 6900, Stop: 7241, Start Num: 15

Candidate Starts for Ludgate_11:

(Start: 15 @6900 has 198 MA's), (20, 6912), (32, 7005), (37, 7035), (38, 7050), (48, 7122), (49, 7128), (52, 7149), (56, 7185), (59, 7209),

Gene: Luna18_12 Start: 7343, Stop: 7687, Start Num: 15

Candidate Starts for Luna18_12:

(Start: 15 @7343 has 198 MA's), (18, 7352), (20, 7358), (35, 7478), (37, 7487), (38, 7502), (49, 7577), (52, 7598), (57, 7637),

Gene: MCubed_10 Start: 6958, Stop: 7305, Start Num: 15

Candidate Starts for MCubed_10:

(5, 6820), (Start: 15 @6958 has 198 MA's), (20, 6970), (26, 7012), (30, 7054), (35, 7090), (38, 7114), (49, 7192), (52, 7213), (54, 7234), (58, 7264),

Gene: MaeLinda_11 Start: 6906, Stop: 7247, Start Num: 15

Candidate Starts for MaeLinda_11:

(Start: 15 @6906 has 198 MA's), (20, 6918), (32, 7011), (37, 7041), (38, 7056), (48, 7128), (49, 7134), (52, 7155), (59, 7215),

Gene: ManRay_11 Start: 7209, Stop: 7550, Start Num: 15

Candidate Starts for ManRay_11:

(Start: 15 @7209 has 198 MA's), (20, 7221), (32, 7314), (37, 7344), (38, 7359), (48, 7431), (49, 7437), (52, 7458), (56, 7494), (59, 7518),

Gene: Mandalorian_10 Start: 7108, Stop: 7455, Start Num: 15

Candidate Starts for Mandalorian_10:

(Start: 15 @7108 has 198 MA's), (20, 7120), (35, 7240), (37, 7249), (38, 7264), (47, 7324), (49, 7342), (52, 7363), (59, 7423),

Gene: Martin_12 Start: 6906, Stop: 7247, Start Num: 15

Candidate Starts for Martin_12:

(Start: 15 @6906 has 198 MA's), (20, 6918), (32, 7011), (37, 7041), (38, 7056), (48, 7128), (49, 7134), (52, 7155), (56, 7191), (59, 7215),

Gene: McGalleon_12 Start: 7777, Stop: 8118, Start Num: 15

Candidate Starts for McGalleon_12:

(Start: 15 @7777 has 198 MA's), (20, 7789), (38, 7927), (47, 7987), (48, 7999), (49, 8005), (52, 8026), (58, 8077), (59, 8086),

Gene: McGonagall_11 Start: 7163, Stop: 7513, Start Num: 12

Candidate Starts for McGonagall_11:

(3, 6938), (Start: 12 @7163 has 2 MA's), (19, 7184), (45, 7367), (52, 7418), (64, 7496),

Gene: Mercedes_11 Start: 7099, Stop: 7443, Start Num: 15

Candidate Starts for Mercedes_11:

(Start: 15 @7099 has 198 MA's), (18, 7105), (23, 7135), (26, 7153), (28, 7177), (30, 7195), (32, 7210), (38, 7255), (49, 7333), (50, 7339), (52, 7354),

Gene: Merida02_11 Start: 6903, Stop: 7244, Start Num: 15

Candidate Starts for Merida02_11:

(Start: 15 @6903 has 198 MA's), (20, 6915), (32, 7008), (37, 7038), (38, 7053), (48, 7125), (49, 7131), (52, 7152), (56, 7188), (59, 7212),

Gene: MillyPhilly_11 Start: 6903, Stop: 7244, Start Num: 15

Candidate Starts for MillyPhilly_11:

(Start: 15 @6903 has 198 MA's), (20, 6915), (32, 7008), (37, 7038), (38, 7053), (48, 7125), (49, 7131), (52, 7152), (56, 7188), (59, 7212),

Gene: MiniVolent_10 Start: 7057, Stop: 7404, Start Num: 15

Candidate Starts for MiniVolent_10:

(Start: 15 @7057 has 198 MA's), (20, 7069), (32, 7168), (35, 7189), (37, 7198), (47, 7273), (49, 7291), (50, 7297), (52, 7312), (59, 7372),

Gene: MonChoix_10 Start: 6976, Stop: 7317, Start Num: 15

Candidate Starts for MonChoix_10:

(Start: 15 @6976 has 198 MA's), (20, 6988), (32, 7081), (37, 7111), (38, 7126), (49, 7204), (59, 7285),

Gene: Morrigan_12 Start: 8241, Stop: 8588, Start Num: 15

Candidate Starts for Morrigan_12:

(Start: 15 @8241 has 198 MA's), (18, 8253), (20, 8259), (24, 8286), (37, 8388), (38, 8403), (49, 8478), (52, 8499),

Gene: MrWorldwide_11 Start: 6906, Stop: 7247, Start Num: 15

Candidate Starts for MrWorldwide_11:

(Start: 15 @6906 has 198 MA's), (20, 6918), (32, 7011), (37, 7041), (38, 7056), (48, 7128), (49, 7134), (52, 7155), (56, 7191), (59, 7215),

Gene: Nagem_11 Start: 6900, Stop: 7241, Start Num: 15

Candidate Starts for Nagem_11:

(Start: 15 @6900 has 198 MA's), (20, 6912), (32, 7005), (37, 7035), (38, 7050), (48, 7122), (49, 7128), (52, 7149), (56, 7185), (59, 7209),

Gene: Nattles_11 Start: 7192, Stop: 7533, Start Num: 15

Candidate Starts for Nattles_11:

(Start: 15 @7192 has 198 MA's), (20, 7204), (32, 7297), (37, 7327), (38, 7342), (48, 7414), (49, 7420), (52, 7441), (59, 7501),

Gene: Nebulous_12 Start: 8077, Stop: 8421, Start Num: 15

Candidate Starts for Nebulous_12:

(Start: 15 @8077 has 198 MA's), (32, 8188), (35, 8209), (37, 8218), (38, 8233), (41, 8251), (47, 8290), (49, 8308), (52, 8329),

Gene: Neferthema_12 Start: 8088, Stop: 8432, Start Num: 15

Candidate Starts for Neferthema_12:

(Start: 15 @8088 has 198 MA's), (32, 8199), (37, 8229), (38, 8244), (49, 8319), (50, 8325), (52, 8340),

Gene: NickSell_11 Start: 6906, Stop: 7247, Start Num: 15

Candidate Starts for NickSell_11:

(Start: 15 @6906 has 198 MA's), (20, 6918), (32, 7011), (37, 7041), (38, 7056), (48, 7128), (49, 7134), (52, 7155), (56, 7191), (59, 7215),

Gene: Nucci_10 Start: 7096, Stop: 7443, Start Num: 15

Candidate Starts for Nucci_10:

(Start: 15 @7096 has 198 MA's), (20, 7108), (35, 7228), (37, 7237), (38, 7252), (47, 7312), (49, 7330), (52, 7351), (59, 7411),

Gene: Oats_11 Start: 7209, Stop: 7550, Start Num: 15

Candidate Starts for Oats_11:

(Start: 15 @7209 has 198 MA's), (20, 7221), (32, 7314), (37, 7344), (38, 7359), (48, 7431), (49, 7437), (52, 7458), (56, 7494), (59, 7518),

Gene: OldNelly_11 Start: 6906, Stop: 7247, Start Num: 15

Candidate Starts for OldNelly_11:

(Start: 15 @6906 has 198 MA's), (20, 6918), (32, 7011), (37, 7041), (38, 7056), (48, 7128), (49, 7134), (52, 7155), (56, 7191), (59, 7215),

Gene: Oxtober96_11 Start: 6903, Stop: 7244, Start Num: 15

Candidate Starts for Oxtober96_11:

(Start: 15 @6903 has 198 MA's), (20, 6915), (32, 7008), (37, 7038), (38, 7053), (48, 7125), (49, 7131), (52, 7152), (59, 7212),

Gene: PHTowN_18 Start: 10953, Stop: 11300, Start Num: 13

Candidate Starts for PHTowN_18:

(4, 10794), (8, 10869), (Start: 13 @10953 has 11 MA's), (27, 11025), (34, 11073), (36, 11085), (37, 11091), (46, 11166),

Gene: PSirce_10 Start: 6945, Stop: 7292, Start Num: 15

Candidate Starts for PSirce_10:

(5, 6807), (Start: 15 @6945 has 198 MA's), (20, 6957), (26, 6999), (30, 7041), (35, 7077), (38, 7101), (49, 7179), (52, 7200), (54, 7221), (58, 7251),

Gene: Pajaza_10 Start: 7200, Stop: 7547, Start Num: 15

Candidate Starts for Pajaza_10:

(5, 7065), (Start: 15 @7200 has 198 MA's), (20, 7212), (30, 7296), (35, 7332), (38, 7356), (52, 7455), (64, 7536),

Gene: Papafritta_11 Start: 7196, Stop: 7537, Start Num: 15

Candidate Starts for Papafritta_11:

(Start: 15 @7196 has 198 MA's), (20, 7208), (32, 7301), (37, 7331), (38, 7346), (48, 7418), (49, 7424), (52, 7445), (56, 7481), (59, 7505),

Gene: ParleG_11 Start: 6906, Stop: 7247, Start Num: 15

Candidate Starts for ParleG_11:

(Start: 15 @6906 has 198 MA's), (20, 6918), (32, 7011), (37, 7041), (38, 7056), (48, 7128), (49, 7134), (52, 7155), (56, 7191), (59, 7215),

Gene: Peep_11 Start: 6894, Stop: 7235, Start Num: 15

Candidate Starts for Peep_11:

(Start: 15 @6894 has 198 MA's), (20, 6906), (32, 6999), (37, 7029), (38, 7044), (48, 7116), (49, 7122), (52, 7143), (59, 7203),

Gene: Penta_11 Start: 7274, Stop: 7618, Start Num: 15

Candidate Starts for Penta_11:

(Start: 15 @7274 has 198 MA's), (26, 7328), (30, 7370), (35, 7406), (38, 7430), (49, 7508), (52, 7529),

Gene: Peppino_11 Start: 7302, Stop: 7643, Start Num: 15

Candidate Starts for Peppino_11:

(Start: 15 @7302 has 198 MA's), (20, 7314), (38, 7452), (49, 7530), (52, 7551), (59, 7611),

Gene: Phanita_10 Start: 6933, Stop: 7280, Start Num: 15

Candidate Starts for Phanita_10:

(5, 6795), (Start: 15 @6933 has 198 MA's), (20, 6945), (26, 6987), (30, 7029), (35, 7065), (38, 7089), (49, 7167), (52, 7188), (54, 7209), (58, 7239),

Gene: Pherbot_11 Start: 7155, Stop: 7496, Start Num: 15

Candidate Starts for Pherbot_11:

(Start: 15 @7155 has 198 MA's), (20, 7167), (35, 7281), (37, 7290), (38, 7305), (47, 7365), (49, 7383), (52, 7404),

Gene: Pherferi_11 Start: 6906, Stop: 7247, Start Num: 15

Candidate Starts for Pherferi_11:

(Start: 15 @6906 has 198 MA's), (20, 6918), (32, 7011), (37, 7041), (38, 7056), (48, 7128), (49, 7134), (52, 7155), (56, 7191), (59, 7215),

Gene: Phiderman_11 Start: 6903, Stop: 7244, Start Num: 15

Candidate Starts for Phiderman_11:

(Start: 15 @6903 has 198 MA's), (20, 6915), (32, 7008), (37, 7038), (38, 7053), (48, 7125), (49, 7131), (52, 7152), (56, 7188), (59, 7212),

Gene: PhillyPhantom_11 Start: 7311, Stop: 7652, Start Num: 15

Candidate Starts for PhillyPhantom_11:

(Start: 15 @7311 has 198 MA's), (20, 7323), (38, 7461), (49, 7539), (52, 7560), (59, 7620),

Gene: Phireproof_11 Start: 6906, Stop: 7247, Start Num: 15

Candidate Starts for Phireproof_11:

(Start: 15 @6906 has 198 MA's), (20, 6918), (32, 7011), (37, 7041), (38, 7056), (48, 7128), (49, 7134), (52, 7155), (56, 7191), (59, 7215),

Gene: PhredFlintston_11 Start: 6906, Stop: 7247, Start Num: 15

Candidate Starts for PhredFlintston_11:

(Start: 15 @6906 has 198 MA's), (20, 6918), (32, 7011), (37, 7041), (38, 7056), (48, 7128), (49, 7134), (52, 7155), (56, 7191), (59, 7215),

Gene: Phriends_11 Start: 6906, Stop: 7247, Start Num: 15

Candidate Starts for Phriends_11:

(Start: 15 @6906 has 198 MA's), (20, 6918), (32, 7011), (37, 7041), (38, 7056), (48, 7128), (49, 7134), (52, 7155), (56, 7191), (59, 7215),

Gene: Pikmin_10 Start: 7200, Stop: 7547, Start Num: 15

Candidate Starts for Pikmin_10:

(5, 7065), (Start: 15 @7200 has 198 MA's), (20, 7212), (30, 7296), (35, 7332), (38, 7356), (52, 7455), (64, 7536),

Gene: Pocket_11 Start: 7194, Stop: 7535, Start Num: 15

Candidate Starts for Pocket_11:

(Start: 15 @7194 has 198 MA's), (20, 7206), (32, 7299), (37, 7329), (38, 7344), (48, 7416), (49, 7422), (52, 7443), (56, 7479), (59, 7503),

Gene: PrincePhergus_11 Start: 7159, Stop: 7500, Start Num: 15

Candidate Starts for PrincePhergus_11:

(Start: 15 @7159 has 198 MA's), (20, 7171), (35, 7285), (37, 7294), (38, 7309), (47, 7369), (49, 7387), (52, 7408), (59, 7468), (64, 7489),

Gene: PuppyEggo_11 Start: 6903, Stop: 7244, Start Num: 15

Candidate Starts for PuppyEggo_11:

(Start: 15 @6903 has 198 MA's), (20, 6915), (32, 7008), (37, 7038), (38, 7053), (48, 7125), (49, 7131), (52, 7152), (59, 7212),

Gene: QuadZero_12 Start: 7356, Stop: 7700, Start Num: 15

Candidate Starts for QuadZero_12:

(Start: 15 @7356 has 198 MA's), (26, 7410), (28, 7434), (30, 7452), (32, 7467), (38, 7512), (49, 7590), (50, 7596), (52, 7611),

Gene: Quartz_10 Start: 7109, Stop: 7456, Start Num: 15

Candidate Starts for Quartz_10:

(5, 6974), (Start: 15 @7109 has 198 MA's), (20, 7121), (35, 7241), (37, 7250), (38, 7265), (47, 7325), (49, 7343), (52, 7364), (59, 7424),

Gene: Raccoon_11 Start: 7308, Stop: 7649, Start Num: 15

Candidate Starts for Raccoon_11:

(Start: 15 @7308 has 198 MA's), (20, 7320), (38, 7458), (49, 7536), (52, 7557), (59, 7617),

Gene: Rahul_11 Start: 7375, Stop: 7725, Start Num: 13

Candidate Starts for Rahul_11:

(9, 7291), (Start: 13 @7375 has 11 MA's), (19, 7396), (42, 7558), (52, 7630), (53, 7648), (62, 7699),

Gene: Rapheph_11 Start: 6906, Stop: 7247, Start Num: 15

Candidate Starts for Rapheph_11:

(Start: 15 @6906 has 198 MA's), (20, 6918), (32, 7011), (37, 7041), (38, 7056), (48, 7128), (49, 7134), (52, 7155), (56, 7191), (59, 7215),

Gene: Raptor_11 Start: 6903, Stop: 7244, Start Num: 15

Candidate Starts for Raptor_11:

(Start: 15 @6903 has 198 MA's), (20, 6915), (32, 7008), (37, 7038), (38, 7053), (48, 7125), (49, 7131), (52, 7152), (59, 7212),

Gene: Redfield_11 Start: 7310, Stop: 7651, Start Num: 15

Candidate Starts for Redfield_11:

(Start: 15 @7310 has 198 MA's), (20, 7322), (38, 7460), (49, 7538), (52, 7559), (59, 7619),

Gene: RenegadeRaider_11 Start: 7158, Stop: 7499, Start Num: 15

Candidate Starts for RenegadeRaider_11:

(Start: 15 @7158 has 198 MA's), (20, 7170), (35, 7284), (37, 7293), (38, 7308), (47, 7368), (49, 7386), (52, 7407),

Gene: Renzie_11 Start: 6894, Stop: 7235, Start Num: 15

Candidate Starts for Renzie_11:

(Start: 15 @6894 has 198 MA's), (20, 6906), (32, 6999), (37, 7029), (38, 7044), (48, 7116), (49, 7122), (52, 7143), (59, 7203),

Gene: Riyhil_11 Start: 6906, Stop: 7247, Start Num: 15

Candidate Starts for Riyhil_11:

(Start: 15 @6906 has 198 MA's), (20, 6918), (32, 7011), (37, 7041), (38, 7056), (48, 7128), (49, 7134), (52, 7155), (56, 7191), (59, 7215),

Gene: Robinson_11 Start: 6897, Stop: 7238, Start Num: 15

Candidate Starts for Robinson_11:

(Start: 15 @6897 has 198 MA's), (20, 6909), (32, 7002), (37, 7032), (38, 7047), (48, 7119), (49, 7125), (52, 7146), (59, 7206),

Gene: Rog141_11 Start: 7196, Stop: 7537, Start Num: 15

Candidate Starts for Rog141_11:

(Start: 15 @7196 has 198 MA's), (20, 7208), (32, 7301), (37, 7331), (38, 7346), (48, 7418), (49, 7424), (52, 7445), (56, 7481), (59, 7505),

Gene: Rooney_18 Start: 11034, Stop: 11381, Start Num: 13

Candidate Starts for Rooney_18:

(4, 10875), (8, 10950), (Start: 13 @11034 has 11 MA's), (27, 11106), (34, 11154), (36, 11166), (37, 11172), (46, 11247),

Gene: RosieMae_11 Start: 7196, Stop: 7537, Start Num: 15

Candidate Starts for RosieMae_11:

(Start: 15 @7196 has 198 MA's), (20, 7208), (32, 7301), (37, 7331), (38, 7346), (48, 7418), (49, 7424), (52, 7445), (56, 7481), (59, 7505),

Gene: SJay_11 Start: 6901, Stop: 7242, Start Num: 15

Candidate Starts for SJay_11:

(Start: 15 @6901 has 198 MA's), (20, 6913), (32, 7006), (37, 7036), (38, 7051), (48, 7123), (49, 7129), (52, 7150), (56, 7186), (59, 7210),

Gene: Sansa_9 Start: 6954, Stop: 7301, Start Num: 15

Candidate Starts for Sansa_9:

(5, 6816), (Start: 15 @6954 has 198 MA's), (20, 6966), (26, 7008), (30, 7050), (35, 7086), (38, 7110), (47, 7170), (49, 7188), (52, 7209), (54, 7230), (58, 7260),

Gene: Saratos_10 Start: 6934, Stop: 7281, Start Num: 15

Candidate Starts for Saratos_10:

(5, 6796), (Start: 15 @6934 has 198 MA's), (20, 6946), (26, 6988), (30, 7030), (35, 7066), (38, 7090), (49, 7168), (52, 7189), (54, 7210), (58, 7240),

Gene: SassyC_19 Start: 10744, Stop: 11091, Start Num: 13

Candidate Starts for SassyC_19:

(Start: 13 @10744 has 11 MA's), (26, 10807), (29, 10831), (32, 10852), (34, 10864), (46, 10957), (49, 10975), (65, 11080),

Gene: Schimmels22_12 Start: 7804, Stop: 8148, Start Num: 15

Candidate Starts for Schimmels22_12:

(Start: 15 @7804 has 198 MA's), (26, 7858), (30, 7900), (35, 7936), (38, 7960), (49, 8038), (52, 8059),

Gene: Schnapsidee_11 Start: 7301, Stop: 7642, Start Num: 15

Candidate Starts for Schnapsidee_11:

(Start: 15 @7301 has 198 MA's), (20, 7313), (38, 7451), (49, 7529), (52, 7550), (59, 7610),

Gene: Schubert_11 Start: 7352, Stop: 7693, Start Num: 15

Candidate Starts for Schubert_11:

(Start: 15 @7352 has 198 MA's), (20, 7364), (30, 7442), (32, 7457), (37, 7487), (38, 7502), (47, 7562), (52, 7601),

Gene: Scissor2024_12 Start: 7442, Stop: 7786, Start Num: 15

Candidate Starts for Scissor2024_12:

(Start: 15 @7442 has 198 MA's), (26, 7496), (35, 7574), (38, 7598), (49, 7676), (52, 7697),

Gene: Sedgewig_11 Start: 7196, Stop: 7537, Start Num: 15

Candidate Starts for Sedgewig_11:

(Start: 15 @7196 has 198 MA's), (20, 7208), (32, 7301), (37, 7331), (38, 7346), (48, 7418), (49, 7424), (52, 7445), (56, 7481), (59, 7505),

Gene: ShaiHulud_11 Start: 6903, Stop: 7244, Start Num: 15

Candidate Starts for ShaiHulud_11:

(Start: 15 @6903 has 198 MA's), (20, 6915), (32, 7008), (37, 7038), (38, 7053), (48, 7125), (49, 7131), (52, 7152), (59, 7212),

Gene: ShakeNBake_18 Start: 10953, Stop: 11300, Start Num: 13

Candidate Starts for ShakeNBake_18:

(4, 10794), (8, 10869), (Start: 13 @10953 has 11 MA's), (27, 11025), (34, 11073), (36, 11085), (37, 11091), (46, 11166),

Gene: Shamu_10 Start: 6946, Stop: 7293, Start Num: 15

Candidate Starts for Shamu_10:

(5, 6808), (Start: 15 @6946 has 198 MA's), (20, 6958), (26, 7000), (30, 7042), (35, 7078), (38, 7102), (49, 7180), (52, 7201), (54, 7222), (58, 7252),

Gene: Shee_11 Start: 6903, Stop: 7244, Start Num: 15

Candidate Starts for Shee_11:

(Start: 15 @6903 has 198 MA's), (20, 6915), (32, 7008), (37, 7038), (38, 7053), (48, 7125), (49, 7131), (52, 7152), (56, 7188), (59, 7212),

Gene: Sinatra_11 Start: 7156, Stop: 7497, Start Num: 15

Candidate Starts for Sinatra_11:

(Start: 15 @7156 has 198 MA's), (20, 7168), (35, 7282), (37, 7291), (38, 7306), (47, 7366), (49, 7384), (52, 7405), (59, 7465),

Gene: SirVictor_11 Start: 7242, Stop: 7583, Start Num: 15

Candidate Starts for SirVictor_11:

(Start: 15 @7242 has 198 MA's), (20, 7254), (32, 7347), (35, 7368), (37, 7377), (38, 7392), (49, 7470), (52, 7491),

Gene: SoilGremlin_11 Start: 6903, Stop: 7244, Start Num: 15

Candidate Starts for SoilGremlin_11:

(Start: 15 @6903 has 198 MA's), (20, 6915), (32, 7008), (37, 7038), (38, 7053), (48, 7125), (49, 7131), (52, 7152), (56, 7188), (59, 7212),

Gene: SolidSnake_11 Start: 6906, Stop: 7247, Start Num: 15

Candidate Starts for SolidSnake_11:

(Start: 15 @6906 has 198 MA's), (20, 6918), (32, 7011), (37, 7041), (38, 7056), (48, 7128), (49, 7134), (52, 7155), (56, 7191), (59, 7215),

Gene: SonOfLevi_11 Start: 7188, Stop: 7529, Start Num: 15

Candidate Starts for SonOfLevi_11:

(Start: 15 @7188 has 198 MA's), (20, 7200), (32, 7293), (37, 7323), (38, 7338), (48, 7410), (49, 7416), (52, 7437), (59, 7497),

Gene: Soror1_11 Start: 7311, Stop: 7652, Start Num: 15

Candidate Starts for Soror1_11:

(Start: 15 @7311 has 198 MA's), (20, 7323), (38, 7461), (49, 7539), (52, 7560), (59, 7620),

Gene: Stanktossa_11 Start: 6906, Stop: 7247, Start Num: 15

Candidate Starts for Stanktossa_11:

(Start: 15 @6906 has 198 MA's), (20, 6918), (32, 7011), (37, 7041), (38, 7056), (48, 7128), (49, 7134), (52, 7155), (56, 7191), (59, 7215),

Gene: StingRay_11 Start: 7196, Stop: 7537, Start Num: 15

Candidate Starts for StingRay_11:

(Start: 15 @7196 has 198 MA's), (20, 7208), (32, 7301), (37, 7331), (38, 7346), (48, 7418), (49, 7424), (52, 7445), (56, 7481), (59, 7505),

Gene: StirfryIV_11 Start: 7196, Stop: 7537, Start Num: 15

Candidate Starts for StirfryIV_11:

(Start: 15 @7196 has 198 MA's), (20, 7208), (32, 7301), (37, 7331), (38, 7346), (48, 7418), (49, 7424), (52, 7445), (56, 7481), (59, 7505),

Gene: Stormbreaker8_11 Start: 7302, Stop: 7643, Start Num: 15

Candidate Starts for Stormbreaker8_11:

(Start: 15 @7302 has 198 MA's), (20, 7314), (38, 7452), (49, 7530), (52, 7551), (59, 7611),

Gene: Strathdee_11 Start: 6904, Stop: 7245, Start Num: 15

Candidate Starts for Strathdee_11:

(Start: 15 @6904 has 198 MA's), (20, 6916), (32, 7009), (37, 7039), (38, 7054), (48, 7126), (49, 7132), (52, 7153), (59, 7213),

Gene: Superfresh_11 Start: 6894, Stop: 7235, Start Num: 15

Candidate Starts for Superfresh_11:

(Start: 15 @6894 has 198 MA's), (20, 6906), (32, 6999), (37, 7029), (38, 7044), (48, 7116), (49, 7122), (52, 7143), (59, 7203),

Gene: Symere_11 Start: 7196, Stop: 7537, Start Num: 15

Candidate Starts for Symere_11:

(Start: 15 @7196 has 198 MA's), (20, 7208), (32, 7301), (37, 7331), (38, 7346), (48, 7418), (49, 7424), (52, 7445), (56, 7481), (59, 7505),

Gene: TatarkaPM_11 Start: 6906, Stop: 7247, Start Num: 15

Candidate Starts for TatarkaPM_11:

(Start: 15 @6906 has 198 MA's), (20, 6918), (32, 7011), (37, 7041), (38, 7056), (48, 7128), (49, 7134), (52, 7155), (56, 7191), (59, 7215),

Gene: Teagan_11 Start: 6900, Stop: 7241, Start Num: 15

Candidate Starts for Teagan_11:

(Start: 15 @6900 has 198 MA's), (20, 6912), (32, 7005), (37, 7035), (38, 7050), (48, 7122), (49, 7128), (52, 7149), (56, 7185), (59, 7209),

Gene: TeddyBear_11 Start: 7209, Stop: 7550, Start Num: 15

Candidate Starts for TeddyBear_11:

(Start: 15 @7209 has 198 MA's), (20, 7221), (32, 7314), (37, 7344), (38, 7359), (48, 7431), (49, 7437), (52, 7458), (56, 7494), (59, 7518),

Gene: Tenda_11 Start: 7207, Stop: 7548, Start Num: 15

Candidate Starts for Tenda_11:

(Start: 15 @7207 has 198 MA's), (20, 7219), (32, 7312), (37, 7342), (38, 7357), (48, 7429), (49, 7435), (52, 7456), (56, 7492), (59, 7516),

Gene: Theresita_11 Start: 6740, Stop: 7087, Start Num: 15

Candidate Starts for Theresita_11:

(Start: 15 @6740 has 198 MA's), (20, 6752), (28, 6818), (35, 6872), (37, 6881), (38, 6896), (43, 6923), (47, 6956), (49, 6974),

Gene: Thompsone_11 Start: 6903, Stop: 7244, Start Num: 15

Candidate Starts for Thompsone_11:

(Start: 15 @6903 has 198 MA's), (20, 6915), (32, 7008), (37, 7038), (38, 7053), (48, 7125), (49, 7131), (52, 7152), (59, 7212),

Gene: Thorongil_11 Start: 6903, Stop: 7244, Start Num: 15

Candidate Starts for Thorongil_11:

(Start: 15 @6903 has 198 MA's), (20, 6915), (32, 7008), (37, 7038), (38, 7053), (48, 7125), (49, 7131), (52, 7152), (59, 7212),

Gene: TinSulphur_11 Start: 6906, Stop: 7247, Start Num: 15

Candidate Starts for TinSulphur_11:

(Start: 15 @6906 has 198 MA's), (20, 6918), (32, 7011), (37, 7041), (38, 7056), (48, 7128), (49, 7134), (52, 7155), (56, 7191), (59, 7215),

Gene: Tinyman4_12 Start: 7445, Stop: 7789, Start Num: 15

Candidate Starts for Tinyman4_12:

(Start: 15 @7445 has 198 MA's), (26, 7499), (35, 7577), (38, 7601), (49, 7679), (52, 7700),

Gene: TwoBits_12 Start: 7139, Stop: 7486, Start Num: 15

Candidate Starts for TwoBits_12:

(Start: 15 @7139 has 198 MA's), (18, 7145), (26, 7193), (28, 7217), (30, 7235), (32, 7250), (38, 7295), (49, 7373), (50, 7379), (52, 7394), (66, 7478),

Gene: Velene_11 Start: 6903, Stop: 7244, Start Num: 15

Candidate Starts for Velene_11:

(Start: 15 @6903 has 198 MA's), (20, 6915), (32, 7008), (37, 7038), (38, 7053), (48, 7125), (49, 7131), (52, 7152), (59, 7212),

Gene: Virizion_20 Start: 11267, Stop: 11614, Start Num: 13

Candidate Starts for Virizion_20:

(4, 11108), (8, 11183), (Start: 13 @11267 has 11 MA's), (27, 11339), (34, 11387), (36, 11399), (37, 11405), (46, 11480),

Gene: Vispitious_11 Start: 6903, Stop: 7244, Start Num: 15

Candidate Starts for Vispitious_11:

(Start: 15 @6903 has 198 MA's), (20, 6915), (32, 7008), (37, 7038), (38, 7053), (48, 7125), (49, 7131), (52, 7152), (59, 7212),

Gene: Wardwill_14 Start: 7512, Stop: 7856, Start Num: 15

Candidate Starts for Wardwill_14:

(Start: 15 @7512 has 198 MA's), (26, 7566), (28, 7590), (30, 7608), (32, 7623), (38, 7668), (49, 7746), (50, 7752), (52, 7767),

Gene: Wentworth_18 Start: 10743, Stop: 11093, Start Num: 13

Candidate Starts for Wentworth_18:

(Start: 13 @10743 has 11 MA's), (26, 10806), (34, 10863), (36, 10875), (37, 10881), (49, 10974),

Gene: WestPM_11 Start: 7283, Stop: 7627, Start Num: 15

Candidate Starts for WestPM_11:

(Start: 15 @7283 has 198 MA's), (26, 7337), (30, 7379), (35, 7415), (38, 7439), (49, 7517), (52, 7538),

Gene: WildNOut_11 Start: 6903, Stop: 7244, Start Num: 15

Candidate Starts for WildNOut_11:

(Start: 15 @6903 has 198 MA's), (20, 6915), (32, 7008), (37, 7038), (38, 7053), (48, 7125), (49, 7131), (52, 7152), (59, 7212),

Gene: Wilkos_18 Start: 10975, Stop: 11262, Start Num: 26

Candidate Starts for Wilkos_18:

(Start: 13 @10912 has 11 MA's), (26, 10975), (27, 10984), (34, 11032), (37, 11050), (49, 11143),

Gene: WilliamStrong_10 Start: 7937, Stop: 8284, Start Num: 15

Candidate Starts for WilliamStrong_10:

(Start: 15 @7937 has 198 MA's), (18, 7949), (20, 7955), (31, 8045), (35, 8075), (38, 8099), (49, 8174), (52, 8195),

Gene: Winzigespinne_11 Start: 7195, Stop: 7536, Start Num: 15

Candidate Starts for Winzigespinne_11:

(Start: 15 @7195 has 198 MA's), (20, 7207), (32, 7300), (37, 7330), (38, 7345), (48, 7417), (49, 7423), (52, 7444), (56, 7480), (59, 7504),

Gene: Xebius_9 Start: 6934, Stop: 7281, Start Num: 15

Candidate Starts for Xebius_9:

(5, 6796), (Start: 15 @6934 has 198 MA's), (20, 6946), (26, 6988), (30, 7030), (35, 7066), (38, 7090), (49, 7168), (52, 7189), (54, 7210), (58, 7240),

Gene: Yara_15 Start: 9856, Stop: 10203, Start Num: 13

Candidate Starts for Yara_15:

(Start: 13 @9856 has 11 MA's), (21, 9877), (32, 9964), (33, 9967), (34, 9976), (36, 9988), (37, 9994), (40, 10015), (45, 10054), (46, 10069), (49, 10087), (55, 10138), (65, 10192),

Gene: YuuY_10 Start: 7103, Stop: 7450, Start Num: 15

Candidate Starts for YuuY_10:

(Start: 15 @7103 has 198 MA's), (20, 7115), (30, 7199), (35, 7235), (37, 7244), (38, 7259), (47, 7319), (49, 7337), (50, 7343), (52, 7358),

Gene: Zada_11 Start: 6897, Stop: 7238, Start Num: 15

Candidate Starts for Zada_11:

(Start: 15 @6897 has 198 MA's), (20, 6909), (32, 7002), (37, 7032), (38, 7047), (48, 7119), (49, 7125), (52, 7146), (59, 7206),

Gene: Zayuliv_12 Start: 7332, Stop: 7676, Start Num: 15

Candidate Starts for Zayuliv_12:

(Start: 15 @7332 has 198 MA's), (26, 7386), (28, 7410), (30, 7428), (32, 7443), (38, 7488), (49, 7566), (50, 7572), (52, 7587),

Gene: Zenitsu_10 Start: 6958, Stop: 7305, Start Num: 15

Candidate Starts for Zenitsu_10:

(5, 6820), (Start: 15 @6958 has 198 MA's), (20, 6970), (26, 7012), (30, 7054), (35, 7090), (38, 7114), (49, 7192), (52, 7213), (54, 7234), (58, 7264),

Gene: Zepp_13 Start: 7341, Stop: 7685, Start Num: 15

Candidate Starts for Zepp_13:

(Start: 15 @7341 has 198 MA's), (26, 7395), (28, 7419), (30, 7437), (32, 7452), (38, 7497), (49, 7575), (50, 7581), (52, 7596),

Gene: phiSASD1_32 Start: 7773, Stop: 8141, Start Num: 14

Candidate Starts for phiSASD1_32:

(Start: 14 @7773 has 1 MA's), (20, 7794), (25, 7836), (37, 7911), (42, 7950), (49, 8019), (52, 8040), (53, 8058), (60, 8103),